

THE NEW WOODEND STAR



Circulation of 3190 throughout
Woodend postal district, Newham, Heskett, Ashbourne,
North Woodend, Hanging Rock, Carlsruhe, Cobaw.

AN INITIATIVE OF THE ROTARY CLUB OF WOODEND

August 2011

A Monthly Community Periodical

First Publication 1997

Volume Fifteen No 8

Piano recital to benefit St Mary's Hall fund

On Sunday 7th August, St. Mary's Woodend is hosting a Piano Recital featuring renowned pianist Douglas Guarneri who is based in London and Paris.

The concert is in aid of St. Mary's Woodend Church Hall Replacement Fund and will be held at Braemar College in the Jackson Room from 2.30pm to 3.30pm followed by afternoon tea.

The programme will include works selected from: Haydn, Beethoven, Schubert, Debussy, Rachmaninov, Scriabine, Prokofiev, Villa-Lobos, Grieg, Shostakovich, and Guarneri.

Douglas will also present the Australian debut his latest composition: "The Tyranny of Distance"



Tickets are \$75 per person and are available from Collier Office & Business Assist, Shop 5, 130 High Street Woodend, payable by Cash or Cheque made out to Anglican Parish of Woodend or by Bank Transfer: Bank: Commonwealth; Branch: Woodend; A/C Name: Anglican Parish of Woodend; BSB: 063 806; A/C No: 1002 4322.

Please include your

name as reference. Tickets can be picked up at the venue on the day.

For sale will be Jewellery by Leonie McLaren, Handcrafts, homemade jams and chutneys with all proceeds going to St. Mary's Church, Woodend.

Order Forms for Hanging Rock Wines, of which 30% of sales go to St. Mary's Church, will be available.

The parish hall was destroyed by fire in 2006, leaving the Church without a hall, and also leaving the parish and community without a favourite meeting place.

Planning and permits for rebuilding are well underway so we urge you all to enjoy this truly world class event, and support the rebuilding fund at the same time.

For more information phone Sylvia Mathews on 5410 8943 between 10am & 6pm.

Back by popular demand The Victorian Welsh Choir

'Singing in the Ranges'

The Cantorion Cymreig Victoria Welsh Choir has performed at the Royal Albert Hall in London, they have toured overseas several times, performed on both BBC and ABC radio ... and now they are bringing their unique sound to perform in the Macedon Ranges.



This special performance of their *Côr Bach*, to support the Woodend CFA, will include a choir of wonderful voices singing in the beautiful environment of St Ambrose Church, which also features superb acoustics.

The entertaining two hour show will include Welsh hymns, folk and traditional songs from around the world, spirituals, classical songs and opera choruses, and songs from 'the Shows', with informative introductions to each item.

There will also be superb local support acts featuring Macedon Ranges' choirs "Beata Lumina" and "Women of Note".

For bookings or more information call Woodend CFA member Keith Beaman 5427 1463, and requests will be considered. St Ambrose Church, Templeton Street, Woodend Sunday 28th August at 2pm \$30 per person (including light refreshments) \$25 for pensioners and CFA members, Credit Cards Accepted (Visa or Mastercard) or cash at the door.

A world class choir

Formed in 1980, the Cantorion Cymreig Victoria Welsh Choir is a traditional Welsh male voice choir singing in four-part harmony, with some of the repertoire sung in Welsh ... 'the language of heaven'. The members come from Melbourne and surrounding areas, as well as from Bendigo.

They toured Wales in 1995, and again in 1999 when they became the first Australian Welsh male choir to compete in the Welsh National Eisteddfod. In 2004, they again made history by winning 3rd prize at Newport.

You can find out more information about this wonderful group by visiting the website: www.vicwelsh.asn.au - the site also includes several songs performed by the choir.

The show is proudly supported by Firebird Motors with proceeds to support the Woodend CFA.

Submitted by St Mary's Church Guild

Submitted by Mike Dornau



New Members

The Rotary Club of Woodend

Put something back into this great community and be part of a worldwide organisation that helps build goodwill and peace allowing ordinary people to achieve extraordinary things and bring about exceptional change in the world.

Contact Brendan 5422 6442

The New Woodend Star

An initiative of the Rotary Club of Woodend Inc.
The Bank, 75 High Street, Woodend, Vic. 3442
ABN 32 685 225 161 No. A0021518E

Layout & printing by Collier Office & Business Assist
EMAIL articles preferred: sales@collierooffice.com.au

Circulation: 3190 copies throughout Woodend and district.

Disclaimer: Articles and comments published in this newspaper are the result of contributions from local groups and relevant news articles pertinent to the Woodend district. Neither the Rotary Club of Woodend Inc., The New Woodend Star nor the editorial team are liable for any mistakes, omissions, or misprints. It prints and makes no representation as to the truth or accuracy of any description, and accepts no liability for any loss suffered by any person who relies on any statement contained herein. The opinions expressed are not necessarily those of the editorial team. The committee reserves the right to omit, reject, cut, alter or otherwise re-work submitted articles to make them suitable.

Committee: Barry Napthine, Ivor Johnson, Claudia Green, Brendan Watters, Alexia Downie, Sue Macklin & Jane Watters

Closing date for inclusion of articles or advertising for each issue is the 15th of the month prior to publication

Information for advertisers

All rates include GST & are priced per month.

Prices for advertising 2011

Business card (55mm x 90mm)\$49 inc GST
Trade Page\$35 inc GST
Quarter page (90mm x 134mm)\$100 inc GST
Half page (134mm x 190mm)\$185 inc GST
Full page (190mm x 277mm)\$315 inc GST
Insert (of your printed brochure)\$230 inc GST

Advertisers: Please note – it is in your interest to book and pay for a year in advance, as a 10% discount applies to any full year pre-paid booking. Any existing pre-paid ads will revert to the new rate on completion of the pre-paid period.

Advertising bookings to be made with Alexia Downie on 5427 3092 or sales@collierooffice.com.au. Accounts queries can be made to Sue on 5427 4089 during office hours or nws@johnsonwoodend.com.au Mail should be directed to: New Woodend Star, C/- The Bank, 75 High Street, Woodend 3442.

Woodend Star Publication Dates for 2011

September - August 29th October - October 3rd
November - October 24th December - November 28th

Changes to advertisements, new advertisements or cancellations must all be made by email or in writing. All advertisements will be placed and charged for until notified otherwise.

SUBSCRIBE TO THE NEW WOODEND STAR

Do you live outside the New Woodend Star distribution area? Be sure to receive your copy every month by subscribing. A yearly subscription of 11 issues is just \$31.90. Post to New Woodend Star, C/- The Bank, 75 High Street, Woodend 3442.

Name: _____

Address: _____

Phone: _____ Enclosed: Cheque/Money Order for \$31.90

New Woodend Traders Association

Do we need it? - Do we want it? - Has it any value?

There's many areas in which a traders association may be beneficial to Woodend

- Village events and promotions.
- Street decorations e.g. Easter, Christmas etc.
- Community events and information.
- Special Fundraisers.
- Lobby Group to give united strength.
- Shop Local promotions .

Are You Interested?

Rotary is prepared to facilitate a preliminary meeting to explore the possibilities. Please indicate your interest by emailing to woodendtraders@gmail.com or telephone Stuart Bonnington at 5426 3600.

Submitted by S. Bonnington for Woodend Rotary Club



RIVERWOOD GROUP

Accountants, Advisors & Planners

Office Locations:

111 High Street, Woodend Ph: 03 5427 8000
2/19 Bourke Street, Kilmore Ph: 03 5782 1273
email: admin@riverwoodgroup.com.au
website: www.riverwoodgroup.com.au

Riverwood Group can offer a *Total Financial Solutions* package for you and your family. Take a look at some of the services we provide:

Taxation

All your taxation requirements to suit individuals and small businesses.

Investments to Create & Protect your Wealth

Managed Funds, Indexed Funds, margin Lending and more

Planning for Retirement

Allocated Pensions, Centrelink Benefits and Payments

Stockbroking

Recommended lists, broking facility available, share updates

Superannuation & Rollovers

Advice, placements, Self-Managed Super Funds and Eligible Termination Payment Advice

Other Services

Home & Investment Loans, Business Loans and Leasing, Income Protection, Life Insurance, Professional Indemnity, Estate Planning and more.



Justine Cadman

Kinesiologist

Holistic Healer

Justine's healing work is a holistic health therapy that helps people's body to be in balance & have harmony within. Justine assists people wanting to make positive life choices.

For an appointment:

☎ 5427 2049 30 Andrew Avenue, Woodend



Pony Club celebrates 40 years

Way back in 1971, nine children on horseback gathered in the shadows of the lofty grandstand at the Woodend racecourse for the first rally of the newly formed Woodend Pony Club.

The fledgling club had only rudimentary facilities and equipment, but what it lacked in practical terms was made up for by the enthusiasm of the riders and supporters.

These dedicated people and their successors have kept the club going continuously for four decades since those children had their first lesson.

Forty years later, Woodend Pony Club is still operating at the now-defunct racecourse and boasts huge clubrooms, extensive storage facilities, a sand ménage, large jumps arena, impressive equipment stocks and a membership of 50-plus riders as well as a brand new cross country course.

This cross country course will be officially opened by the Hon. Donna Petrovich on Sunday, August 7, as part of the Woodend Pony Club's 40th anniversary celebrations.

The official unveiling of the course is preceded by a 40th anniversary reunion celebration on Saturday, August 6 at the St Ambrose Hall in Woodend, where past and present members and supporters of the club will meet to reminisce.

Woodend Pony Club president Russell Manton said the reunion weekend was an important milestone for the club and people were expected to come from around Australia to attend.

Among those at the reunion will be Julie Morris and her daughter Rebecca Evans, whose family has been long associated with the club. Julie's father Albert Morris was a tireless worker for the club and Julie herself was a member for 25 years, initially as a rider but then as an instructor and committee member. Julie rejoined the club with daughter Rebecca in 2001, making three generations of the same family at Woodend Pony Club.



Julie Morris with her daughter Rebecca

Anyone interested in further information about Woodend Pony Club should contact Russell Manton on 0409 136 071.

Submitted by Leanne McDonnell Manton

Naturally Divine

For Hair, Body and Soul

Try any colour, face framing foils, stylish cut and blowdry/straighten all for just \$99.00 (long hair extra)

Ladies cuts from \$25.00

Come and see our award winning stylist

Tracy, for excellent personalised service.

ph: 54226196 / 0411399493

Woodend Rainfall Report 2011

Each month we add the rainfall details and the year to date total. Our rainfall report shows, 2005, 2006 2007 2008 2009 and 2010 comparisons. Please note that your own rainfall readings may not exactly match these.

	2006	2007	2008	2009	2010	2011	
January	49.8	83.5	17.1	0.08*	54*	227.5	Jan
February	53.1	27.4	22.1	2.5*	71.5*	115.0	Feb
March	20.6	35.7	25.4	42.5*	121*	35	Mar
April	46.4	20.2	20.4	51*	45	63.5	April
May	58.8	95.7	43.7	30.5*	39	73.5	May
June	36.0	105.1	88.7	66.5*	98.5	69	June
July	91.6	83.3	112.5	76.5*	87.5		July
August	30.8	34.8	52.2	107.5*	148.5		Aug
Sept	50.6	49.8	42.0*	88.5*	97		Sept
Oct	5.2	12.1	13.0*	46*	154.5		Oct
Nov	13.0	91.0	67.2	99*	193		Nov
Dec	31.0	101.2	96.0*	60*	93		Dec
YTD:	486.9	739.8	600.3	670.5	1202.5	593.5	YTD

Figures for 2008, 2009 & 2010 include information from a different location indicated by *.

2011 Rainfall to date total in inches = 23.34 inches

For the year of 2010 there was rainfall of

1202.5mm

1 inch = 25.4 mm therefore the total year 2010 is 47.34 inches

Woodend Art Group

The Woodend Art Group's Winter Art Show on the Queen's birthday long weekend in June was a big success, selling many paintings and receiving lots of compliments on the high quality of members art work.

The Woodend Art Group runs art classes for beginners and the more experienced, each term in a variety of mediums, including Watercolour and Mixed Media, Folio Club for 7 to 14 yrs, Drawing, and Oil Painting.

There are two upcoming workshops- Painting with Acrylics Workshop with John York on Sunday 7th August and Tutored Gestural Workshop on Saturday the 27th August. Non members are welcome to attend.

The Woodend Art Group will be holding its Annual Art Show on Saturday the 8th October and Sunday the 9th October. Details on the show will be in next month's edition.

For further information, including cost of workshops, telephone Pamela Simmons, 5427 1659.

Submitted by Justine Cadman, Woodend Art Group.

Collier Office
and Business Assist

Shop 5, 130 High Street
Woodend
5427 3092

Feeling frustrated by your computer ?

- Complete PC Troubleshooting
- Virus Removal and Protection
- Hardware Repairs
- Custom Built Systems, Hardware and Software
- Basic Computer Training

Trust Colliers for all your home or business Computer and I.T. needs



1 million reasons to Relay

Since it started in 2003 the Lancefield-Macedon Ranges Relay For Life has raised almost \$870,000 for the Cancer Council Victoria.



www.relayforlife.org.au

The organising committee is stepping up efforts in a bid to see next year's 10th anniversary event take the fundraising tally to \$1 million.

All teams, prospective participants and supporters are invited to the 2012 Relay Launch on Tuesday, September 6th at the Woodend Tennis Club from 7.30pm.

This will be an opportunity to celebrate involvement and discuss how to make the Relay more enjoyable and inclusive, and to strengthen fundraising efforts.

Relay For Life is a team event which challenges participants to keep their team batons going for 19 hours. It attracts families, friends, youth groups, schools, community organisations and workplace teams who spend up to a year fundraising in various ways including dances, fun runs and car rallies.

A highlight of the Relay is the ceremonies to Celebrate cancer survivors, Remember lives lost and Fight back to find a cure. Many teams camp overnight and the live entertainment is a major attraction.

The 2012 Lancefield-Macedon Ranges Relay For Life will be held on March 3 & 4 at Lancefield Park. For details about registering or getting involved ring Melissa McCarthy on 0438 831 427 or email tmac31@bigpond.net.au

Submitted by Nadine Hartnett

Woodend Red Cross

The Annual General Meeting of the Woodend Unit of Red Cross will be held on Thursday 4th August. This meeting will be preceded by a luncheon at 12 midday.

Murray Kennedy, Team Manager of Woodend Ambulance branch will be the guest speaker.

The venue is Wahroonga, 718 Tylden Road RSVP Norma 54271260 or Cate 5427 3424

Submitted by Melissa Hocking

100% Volunteers. 110% Rewarding.



Woodend Fire Brigade. New members always welcome.

See page 30 for further details

KYNETON EQUIPMENT & PARTY HIRE

FOR ALL YOUR HIRING NEEDS

8-12 BEAUCHAMP ST PHONE (03) 5422 2311
KYNETON VIC 3444 FAX (03) 5422 2930

Email: kynhire@bigpond.net.au
website: www.kynetonhire.com.au

WARNER'S JEWELLERS

EST. 1912 ~ 4th Generation Jewellers

Manufacturing Jewellers **Watch & Clock Repairs**
Jewellery Repairs **Valuations & Rethreading**

Beautiful selection of

PANDORA™
Life has its moments ... make them all unforgettable

97 High Street, Woodend

5427 1573

VIC CENTRAL INDUSTRIAL LAUNDRY

RENTAL WORKWEAR & LINEN SERVICE

MICK FITZPATRICK
0418 271 034

3 DRYDEN CRT, WOODEND 3442

Your Memories to DVD

* 8 mm/16 mm Films * Mini DV
* Compact VHS * VHS

Discount for Quantity

Top Hat Productions
Ph: 5422 3930

FAIRHURST CONVEYANCING

and Secretarial Services

For all your

Property Transfers

Ring Sue Fairhurst on

5427 2382

27 Urquhart Street, Woodend

MVCA & AIC

Macedon Ranges Film Society

The Film Society has become so popular that the growing numbers of members have necessitated a move to a larger venue; Woodend Community Centre.

The Community Centre offers the Society the opportunity to grow further, the setting is improved with carpet to enhance the sound quality and the equipment, bought with the assistance of Macedon Ranges Shire Council can work to its fullest.

This year has seen the viewing for some overseas films; *In the Mood for Love* and *Jules et Jim* that were greeted with a mixed review by the members, but we have also shown more modern; *Goodnight and Good Luck*, and a classic; *Butch Cassidy and the Sundance Kid*. The aim of the Film Society is to bring films to the people of Woodend and surrounds, to enjoy collectively. We may show films that you would not have chosen to watch yourself, but just as a book-club aims to stretch interest and reading, we aim to stretch our members and encourage viewing of films they may not have given any previous thought to.

We'll finish the evening with drinks and nibbles and an informal chat about the film.


Films are shown on Second Wednesday of the month, February to November at Woodend Community Centre (Next to the library) at 7pm for a 7.15 start.

If you are interested in joining Macedon Ranges Film Society please call Victoria Wells 5427 2323 for more details, or come and join us on a film night and join the Society.

Screening Dates

- 10 August - *Ed Wood*, US 1994.
- 14 September - *Adaptation*, US 2002.
- 12 October - *The Sound of One Hand Clapping*, Aust. 1998.
- 9 November - *Some Like it Hot*, US 1959

Submitted by Victoria Wells



UNEARTH
CREATIVE DANCE
Joyful expression through guided, improvised movement

Classes at Jubilee Hall Macedon on
MON: 4-5pm 5-8 years. WED: 9.45am Preschool
11am child + parent (45 mins), Mum n bubs yoga
12- 1pm Adult dance Thursday 8.15-9pm.

Call Della: 0422 652 688 or unearthjoy@gmail.com
www.unearthcreative.com.au

BGE

Joinery Quality you deserve

- Kitchens • Shop fittings • Bars

BRAD ELSE

Mob: 0412 355 548 Ph: 5422 2571
New Factory & Showroom

Lot 11 Kyneton - Metcalfe Road, Kyneton
11am - 5pm Fridays or by appointment

Woodend Neighbourhood House

Our winter program is now in full swing and we have many opportunities available.

Cyber Life- understanding the digital teen is a must for parents of teenagers. This interactive information session will guide parents through the Social Networking maze and provide ways for parents to assist their teen navigate CyberLife safely and successfully. This includes looking at the most up to date info & research related to young peoples use & misuse of technology, have a close look at Facebook & provide practical tools to help parents bridge the digital divide. Led by Annie Rowland, Shire Youth Strategic Development Officer & facilitator of the CyberLife Program offered to schools across through the Macedon Ranges. Monday 22nd August, gold coin donation.

Let's Break the Silence is a series of workshops being run across the Shire for people who have or support someone who has depression or mental illness. The Woodend session is being run on 18th August and includes presentations & information by local practitioners, plus supper and entertainment.


There are several one off hobby classes in mosaic, origami, glass fusing and card making – so try a new skill or refresh an old one. Are you interested in photography? There is a digital photography club that meets on the 2nd Thursday each month at 7.30pm. Enthusiasts discuss and share their ideas and pictures and extend their knowledge and enthusiasm from each other.

This term we are offering several educational opportunities. Are you interested in a future career in book keeping? We have an introductory course in booking keeping as well as classes in MYOB. Our training in Integration Education Support continues this coming month and new students are welcome. First Aid is once again available, whether you are learning for the first time, refreshing an existing certificate or just need to update your CPR. A class runs across two Monday's this month. During September we will be running RSA and Food Safety classes too.

For the more creative people out there – how about trying your hand at making your own mohair teddy bear, with oodles of personality; or join Saskia Post for a series of art therapy workshops; Stone carving with Jock; decorate letters in Illumination of Manuscripts or start a love affair with patchwork or stitchery.

For details of all courses and opportunities ring 5427 1845, or visit 47 Forest St.

Submitted by Sarah Campbell Coordinator



WOODEND & DISTRICT PODIATRY

John F. Shapland

Resident Practitioner
Reg. Department Veteran's Affairs

5427 2064

Business and After Hours
1895 Mt. Macedon Rd., Woodend

Resonance String Orchestra in concert

Resonance String Orchestra is proud to invite you to its concert on Sunday 18th September at the beautiful Church of Resurrection in Macedon. The concert will feature renowned violinist Andrea Keeble, who will be performing a selection of her original compositions from her new solo album, including works for violin and loop pedal, violin and piano, and solo violin. The program for this event will also include performances by the staff and students of Resonance, including works by Bach, Piazzolla and Brevai, and Resonance String Orchestra's own original composition, created under the guidance of Keeble (2011).

Special guests also include the Macedon Ranges' Children's Choir. This is a truly special event supported by both the Macedon Ranges Shire Council and Woodend Primary School.

For Tickets contact Jen 0402 329 300. Session times: 2pm and 4.30pm. Refreshments will be on offer.

Submitted by Jane Walduck



Professional Trivia Night Coming!

Get out your diaries now - Woodend Playgroup is bringing professional trivia hosts, Soundstorm, to town for a fun, exciting night out on Saturday 27th August at St Ambrose Hall in Templeton Street from 7pm.

The evening includes TV/Movie Themes, Q&As, Famous Faces, Games, Challenges and loads of laughs. And all for a good cause - raising money for our local children's playgroup centre. There'll be plenty of great prizes, giveaways, and some fabulous silent auction items on offer as well.

Great value quality wine & delicious cheese platters will be available to buy or you can BYO food & drinks. Individual tickets are \$20 each until sold out or you can book a table of up to 10 for \$150. Call Georgie on 0418 576 641 to buy your tickets now.

All welcome for a great night out to support Woodend Playgroup. Come dressed as someone famous to win a fantastic prize.

Submitted by Sarah Copland

CENTRAL VICTORIAN TIMBER

- Sleepers •
 - Treated Pine •
 - Posts •
 - Hardwood •
 - Plaster •
 - Doors •
 - Redgum Firewood •
- Specialists in house lots and extensions

Phone: 5427 1090

Email centralvictimber@bigpond.com

Monday to Friday 8am - 5pm Saturday 9am-12pm

988 Blackforest Drive Woodend (Old Sawmill Site)

All local groups, clubs and committees are invited to submit articles for publication

MACEDON RANGES SELF STORAGE

- | | |
|----------------------------|----------------------|
| * 7 day access | Store your: |
| * Individual units | * Cars |
| * Affordable prices | * Boats |
| * Insurance available | * Business documents |
| * Now Fully Alarmed | * Furniture etc. |

Lot 3, Hoyle Court, Kyneton **5422 1898**
(Off Beauchamp St) **5422 3488**



"for all your water needs"

The Water Bloke Specialises in

- Rainwater Tank Installations
- Tank To Toilet connections
- Grey Water Recycling

We're based in Woodend, so call us for a free consultation and Water Audit of your home.

Contact Craig on 0410 275 714
thewaterbloke@gmail.com

CATERING FOR ALL YOUR BUSINESS NEEDS

Printing

Office products

Administrative services

We are the trusted print supplier for companies both large and small throughout the Macedon Ranges. Our print department is dedicated to providing high quality and fast turnaround on all your print runs.

Talk to the team at Colliers about you next project.

- *Manuals and binders*
- *Training packages*
- *Annual Reports and tenders*
- *Short run books and novels*
- *Marketing brochures and flyers*
- *Event invitations & service books*
- *Posters & Banners*
- *Promotional point of sale*
- *Event collateral*
- *Newletters and magazines*

We strive to deliver the most cost effective services in the region, so if you can find a better price, do let us know!

Providing Stationery, Printing & Office Services to the Macedon Ranges

P 5427 3092 **E** print@collieroffice.com.au
A Shop 5, 130 High Street Woodend

Time to get started.....

Kyneton Show 2011

Did you all get a chance to take part in the 150th celebrations of the Kyneton Agricultural Show last November? If you did, give yourselves a big pat on the back because you helped make the show a huge success. It was one of the biggest and best shows Kyneton has ever held. If you didn't get the opportunity to go last year, never fear, because the 151st Kyneton show is fast approaching. The committee would like everyone to get behind this great event and start thinking of what you can do to contribute to this wonderful show.

The Kyneton Agricultural Show is held on the third weekend in November and it's now you need to think about what to plant, grow, make, breed, create and paint so it'll be finished and at its best by the 18th & 19th of November.

The fun starts on the Friday night 18th November with great carnival rides, the Ute Muster, Kyneton's Got Talent and this will be topped off by the biggest and best Fire Works Display Kyneton has ever seen.

Saturday 19th November is show day and this is where your masterpieces can be displayed. This year there will be a new Junior Master Chef Cook off event, so start practicing in Mums kitchen. The creations in the pavilion each year are growing and we know that this year will be no different. Displays will include Farm and Dairy produce like eggs, vegetables, home-made cheeses, home grown fruits to jams, decorated cakes, biscuits & breads. Let's not forget the wonderful displays of flowers, knitting and needlework, photography, arts and crafts and of course the painting and drawing sections. There is a category to suit everyone.

There will be plenty for the kids to enter too! Start sprucing up your much loved family pet for the ever popular Children's Pet Parade. Some of the finest bred cattle, sheep, rabbits, poultry, dogs and horses are in this great district and will be on display.

If you missed the Ag Art & Farm Art display last year, don't worry because it just keeps getting bigger and better every year. Kyneton and its surrounding districts have some very talented people and their work can be seen on display at this year's local show.

So, if you have got some great ideas now is the time to start putting it all into practice and get it ready for the 151st Kyneton Agricultural Show. Just like Christmas, November is just around the corner and it will be here before you know it, For more information visit www.kynetonshow.org.au or contact the show Secretary on (03) 5422 1192. The committee & volunteers would love to see your creations at the show.

Submitted by Nicole Laity

You have Questions  *We have Answers*

CHINKA (HEP) STEEL - Your Local "One Stop" Legal Shop

All General Legal Services

- | | |
|-----------------------------------|------------------------------|
| * Family Law—who gets what? | * Being Sued? |
| * Been charged by the Police? | * Want to challenge a Will? |
| * Conveyancing - avoid the traps! | * Setting up a Business? |
| * Need a Parenting Agreement? | * Why do you need a Will? |
| * What is a Power of Attorney? | * Are you a Victim of Crime? |
| * Need a Co-habitation Agreement? | * Executor responsibilities? |

Victoria Legal Aid

Why travel to the city when you can get great service & results locally!

Ph: 5427 2477
74 High St Woodend 3442
www.chinkasteel.com.au
chinka@chinkasteel.com.au

Macedon Ranges students' Sustainability Awards

Donna Petrovich, State Member of Parliament for Northern Victoria Region and Parliamentary Secretary for Sustainability and Environment is delighted to announce the winners of the inaugural Macedon Ranges Students' Sustainability Awards 2011: Jessica Morris, a student at St Brigids Primary School Gisborne, and Blair Spence, a student at Gisborne Primary School.

"As the Parliamentary Secretary for Sustainability and Environment, I was very pleased to see the enthusiasm and innovative ideas regarding sustainability and environmental issues outlined in the entries," said Mrs. Petrovich.

Mrs. Petrovich said that deciding on the winners was a difficult task but after much deliberation she has chosen two very worthy entrants.

"Jessica Morris is a leader and role-model in sustainability and environmental concerns at her school and so was a very popular and worthy winner, while Blair Spence's entry showed great respect for the environment and innovative ideas about waste management and recycling," said Mrs. Petrovich.

Mrs. Petrovich presented Jessica and Blair with their awards and cash prizes at their school assemblies this week.

"These awards were an opportunity for all students in the Macedon Ranges Shire to explore ways in which we can improve environmental protection and sustainability in our local region and I look forward to next year's competition," said Mrs. Petrovich.

Submitted by Diane Tregoning Office of Donna Petrovich MLC

ecosmart⁺
Fire

Bio-ethanol fireplaces
Warm your home not
the environment



Bradley's
Curtains+Blinds

t 5427 2361 fx 5427 1019
72 High Street, Woodend VIC 3442

THE BROOKE STREET MEDICAL CENTRE

Gap fees

Some people ask us why there is an out of pocket (gap) fee for their consultation – the poster beside this column is helpful in understanding this.

We do however continue to bulk bill a number of services, e.g. care planning for patients with chronic diseases, childhood immunisations etc.. We also have reduced fee rates for pensioners and health care card holders.

Flying Doctor – back in town

This year continues to be busy for Manisha Fernando! After enjoying nine months of travel overseas in 2010 which included adventures in South America, Cuba, Alaska, South Africa, the UK and Cyprus, she was happy to return home to Australia and returned to Brooke Street for a few months in the first half of 2011. Manisha said it was lovely to be back among the familiar faces of her colleagues and patients.

After nine months of a different kind, Manisha is currently on maternity leave! She and her husband have recently welcomed the birth of their new baby son. She is enjoying being back in Woodend – except for the winter temperatures – and looks forward to returning to work at Brooke Street Medical Centre in 2012.

Opening new treatment room

Early in August our new treatment room and car parking areas will open. We thank you for your patience during the building process. There will be more news about our new facilities in a later edition of the Woodend Star.

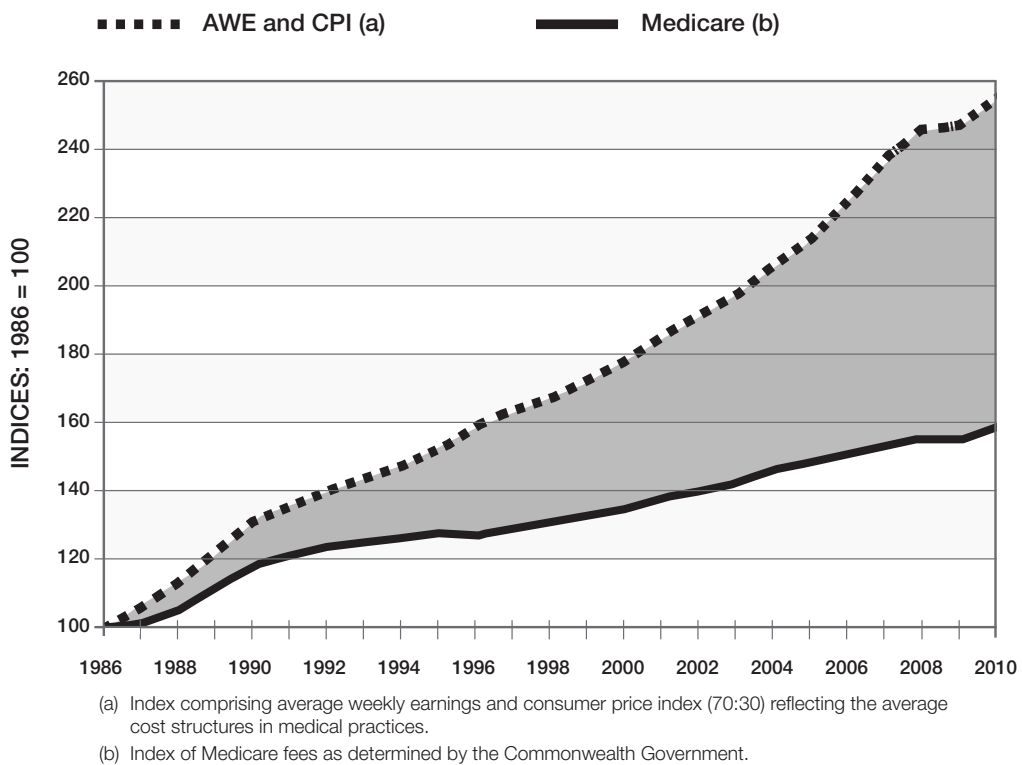
Appointment for prescriptions

When you need a new prescription – please make an appointment to be properly assessed. Your Doctor will consider a range of health factors (e.g. blood pressure, other medications) in order to safely prescribe the right medication and dosage for you.

*Brooke St. Medical Centre – tel. (03) 5427 1002
(after hours: tel. 1300 55 75 12)*

Gaps

Why is there a gap?



The fees we charge are set at a level that enables us to look after you properly. The cost of providing good medical care is rising. The Government's contribution is falling away. That is why you may find you have to pay a gap.

Talk to your doctor. We are here to listen.



AMA

Doctors caring for Australians

PO Box 6090, Kingston ACT 2604, Telephone: (02) 6270 5400
 (Published by the Australian Medical Association Limited, A.C.N. 008 426 793)

Eating Out, In & Around Woodend

* FAB FOOD
* FUNCTIONS & CATERING
BY ARRANGEMENT
Bookings Essential
BYO wine only
Light Snacks Mondays
Free entry for
Macedon Ranges residents

Tel: 5427 0295

Large range of Australiana Gifts

**Hanging
Rock
Café &
Country
House**

 **the bentinck**
OF WOODEND

Friday 5 August, 6.00pm
Friday night drinks—first Friday of every month.
Shared platters available.
No reservations required.

Boardroom & meeting spaces available for hire.
Call now to discuss our daily rates!

8 Carlisle Street, Woodend p: (03) 5427 2944 w: bentinck.com.au

CONFERENCES WEDDINGS EVENTS


**victoria
HOTEL**
WOODEND

Bistro
Open 7 days lunch & Dinner
Daily Blackboard Specials

Bar
Counter meals daily
Fridays Tradesmans Lunch-\$14 pot & parma
TAB & Sky Channel

Specials
*Tuesday Locals Day menu \$17.50
with glass house wine, lunch & dinner.
*Pensioner & Seniors card holder Lunch menu
from \$14.50

Drive Through Bottle Shop
Open 7 days

Bookings 5427 2721
67 High Street, Woodend
www.vicwoodend.com.au
info@vicwoodend.com.au

Winter at The Bentinck

Its been a busy winter for The Bentinck with sponsorships of the Woodend Winter Arts Festival and the Victorian Truffle Festival.

Arts Festival guests were treated to a sumptuous three course meal while being entertained by Joe Chindamo and his trio. Rated as one of the best jazz pianists in the world, Joe has the rare gift of making difficult and complex music sound easy. Many guests rated the evening as the highlight of the festival.

The Victorian Truffle Festival dinner featured the culinary delights of celebrity Chef Philippe Mouchel, one of Victoria's very best Chefs and restaurateurs (PM24). Philippe was ably assisted by chefs from Maloa House Gourmet Delights and The Bentinck. Matching wines were carefully selected by wine maker, Phillip Moraghan of Curly Flat Vineyard.


Local truffle experts were joined by interstate and international guests from as far away as the USA to celebrate the rapidly growing local industry as part of the Victorian truffle festival.

The evening also marked the first anniversary since the Grantham Family took ownership of this beautiful Woodend icon and began to restore both the business and building to its former glory.

The Bentinck's General Manager, Allison Hilton & Operations Manager, Thierry Bertalmio have been delighted with the opportunities to showcase the venue. "We are looking forward to bringing further events of this type to The Bentinck in future".

The Bentinck of Woodend is fast re-establishing its reputation for high quality cuisine and impeccable service. For further information on upcoming events please go to www.bentinck.com.au or call 5427 2944.

Submitted by Allison Hilton



**Award winning Bread,
Pies & Cakes**

Shop 1 & 2, 115 High St, Woodend
Open daily from 7am
54272486
www.bourkies.com.au

Zarby's
Wine bar & bistro

Open Wednesday -Saturday
10am till late

84-88 High Street, Woodend P: 5427 4414

Eating Out, In & Around Woodend



The Village Larder

**Now Open 7 Days
8am - 4pm!**

81 High St, Woodend
Phone 5427 3399
info@thevillagelarder.com.au
www.thevillagelarder.com.au

DHABA

at the MILL
CURRY HOUSE / WINE BAR

**Dhaba Take Away Truck
Expanded Hours**
Serving Take Away Dinners
Thursday-Sunday
from 5pm

35 Urquhart Street, Woodend
(Behind Commonwealth bank, across from the nursery)

Dhabaatthemill.com

To view new menu every two weeks!!

Dhaba at the Mill dine in location
at 18 Piper St Kyneton

*Specialising in;
Gluten Free Cakes
Petite Fours (great for functions)
Cakes for all occasions
Wholesale cakes for Cafes & Restaurants*

Pie'ce De Resistance

Joe and John Tullio www.mrcakes.com.au
74 East Street Woodend 5427 3960

AUBERGE CATERING

We come to you...day or night



PO BOX 749
WOODEND 3442
0408599066
aubergecatering@yahoo.com

CAMPASPE HOUSE
A COUNTRY HOUSE HOTEL & RESTAURANT


**LAST OF THE WINTER WINERY DINNER SERIES
COPE-WILLIAMS DEGUSTATION DINNER**

Saturday 17th September 2011 at 7pm

Gordon Cope-Williams will be showcasing his best wines along side a magnificent degustation dinner designed by esteemed chef Steffen Jensen.

Places are limited, so please book early to avoid disappointment!

GOLDIES LANE WOODEND 03 5427 2273
reservations@campaspehouse.com.au www.campaspehouse.com.au



Frank & Rose Gorlitz

Open 7 Days
8am till late
breakfast, lunch & dinner

For Bookings
Ph/Fax 5427 4447
Mobile 0488 423 537
"Where Lovers of Food Eat"

Eating out, In & Around Woodend

SEASONS
presents

Book now!

Sunday, 14 August from 3—6pm



Crakajak — From the very first chord till the final encore you will be captivated by the energy, charm and musicianship of this great Aussie band.

Back by popular demand.



Also featuring guest artist, Marcie Jones. Marcie has toured with The Seekers, The Monkeys, Cliff Richard, Tom Jones and supported Gene Pitney on five national tours.

www.seasonsbistro.com.au
bistro bar & deli
4 station st riddells creek

5428 7501

Rasputin's

wine bar • restaurant • gallery
Thursday to Sunday

5426 3700

info@rasputinbar.com.au

40 Victoria Street, Macedon

HOLGATE'S BAR & RESTAURANT

Microbrewery Hotel with cosy open fires, stained glass windows and friendly atmosphere. Award winning local beer. Delicious meals including house-made bread, pasta and desserts. Function room and stylish accommodation now available.

Open for Lunch Tues-Sun. Open for Dinner 7 Days

79 High Street, Woodend

Ph 03 5427 2510



Local Businesses - winning big

Green Bean for Service- and great coffee

The Green Bean Machine achieved success at the recent Macedon Ranges Business Awards, winning the Excellence in Customer Service Award, and being a finalist in the Excellence in Retail category.

Green Bean Machine owner, Dean Frank stated that the award was a great honour as providing a high level of customer service has been the priority since the business commenced in 2006.

The Green Bean Machine is a locally owned and operated mobile coffee business, with the emphasis on providing a high quality product for the customer with a minimum of fuss, in locations where it previously may have been impossible to have a barista made coffee.

As well as supporting a large number of local sporting clubs (including Woodend Junior Football Club, Woodend Heskett Football Club and Woodend Netball Club), the Green Bean Machine is also at the Woodend Train Station (5.00am – 8.30am) during the week, providing respite from the early, cold mornings for commuters with a range of hot drinks. A drive through service is also available for those who travel by car.

For more information regarding how the Green Bean Machine may add value to your event or gathering, please contact Dean Frank on 0439 354 432.

3Fish Wins Green Gongs - Little Aussies Can Make the World Better

3Fish - a small Woodend start-up - proved that simple, consistently applied ideas can support the sustainability

**Running late?
Leaving Early?
Need Coffee?**

**The green bean machine
is located at
Woodend Train Station**

(platform 2)

Drive thru service available
Just text your order &
pick it up on your way

Mon to Fri 5.15am - 9.00am

Call Dean Frank on
0439 354 432 or
call in at Woodend
Train Station

Also available for festivals,
fetes, private functions
& markets

of our planet and people when it won the Sustainability Leadership for SME's award at the United Nations Association of Australia's World Environment Day Awards in Melbourne on 3rd June.

Established three years ago by, Marty and Natalie Dillon, 3Fish aims to help the world 'do the right thing' by providing a range of clothing produced to exacting sustainability standards including fairtrade, certified organic and carbon neutral.

Having built their ethical supply chain from scratch, 3Fish's Marty Dillon says "we are immensely proud to say we have a world class ethical supply chain in place and we are ready to assist any organisation in Australia make ethical clothing and merchandise a reality".

Each year the United Nations Association of Australia recognises the important work of Australian environmental leaders through its World Environment Day Awards program.

3Fish is a little company with big goals, and an ever growing reach. "The Universal Declaration of Human Rights takes pride of place on the wall of our office", says Natalie Dillon, "so to receive this award from the United Nations is an incredible honour".

3Fish then followed up by going on to win at the Victorian Premier's Sustainability Awards on the 9th of June. Now in their ninth year, the Premier's Sustainability Awards recognise and reward Victorian businesses, institutions, communities and individuals that are forging a sustainable Victoria now and for the future. 3Fish was recognised as demonstrating outstanding leadership, creativity and innovation in the Small Business Category.

"The Macedon Ranges is definitely a leader in embracing fairtrade and organics. We love to see café's like the Village Larder, and the revolutionary childcare facility

"The Farmhouse" in Mansfield choosing 3Fish as their staff uniforms, and our retail range being stocked in No.2 Sweetheart in Kyneton, Benchmark Collective in Woodend and Flight Plan in Daylesford and it is also serendipitous to be working with the wonderful team at Bodywise to offer an expanded size range." Natalie reports. "And of course, how lovely to receive an award designed by another Woodend local, Brad Welsh of One Degree Design, and masterly crafted by Ravi Avasti, also from the Macedon Ranges.".....

Holgate Hopinator wins top trophies at Perth Royal Beer Show

Woodend's Holgate Brewhouse has taken the Beer and Beef Club of Perth Best Commercial Beer of Show and Beer & Brewer Magazine Best Packaged Ale trophies at this year's Perth Royal Beer Show.

It was an unexpected surprise birthday present for Holgate brewer Ian Morgan. "Western Australia has a great craft brewing tradition and we were up against some excellent breweries that do very well in these competitions," he said "At best we were hoping for a nice medal or two, so to walk away with the best beer trophy has us pretty stoked."

Head brewer and owner Paul Holgate included the Hopinator Double IPA in the Holgate range three years ago, and it has since been winning over beer lovers with its blend of a strong malt flavours and intense hop aromas and bitterness. "Most of our beers get two or three hop additions. The Hopinator gets seven," he explained, "It keeps the brewer jumping!"

The Hopinator is available in bottles year-round (and on draught seasonally) at the Woodend brewhouse.

Holgate Brewhouse can be contacted on 03 5427 2510 www.holgatebrewhouse.com

*Articles submitted by proprietors of these businesses



bodywise
UNDERWEAR

www.bodywise.com.au
1300 66 17 66
Shop 19, 130 High St, Woodend

Wire-free bras, briefs & more ... sizes 10 to 30





• wire-free • everyday comfort • all ages • maternity • sports • wardrobe basics •

Wanted to Rent

Professional family seeking to rent a 3 bedroom + study or larger house in Woodend, Tylden, Macedon area. Very clean, excellent references, no pets.

Please call 0438 008 827

Meta Massage

SPORTS/REMEDIAL MASSAGE, SHIATSU, REIKI
Raymond White

Telephone 0411 268 336

for an appointment


18 years experience • Chronic and acute conditions
Sports injuries • Rehab work

What's New

WHOOOOO

has the cutest baby gifts in town?

Our new owls are a hoot! Mobiles, rattles, musicals, wraps ... and more. Come and see what else is in store!



ZAPPA-do *Baby and You!*

3/87 High Street, Woodend • 5427 1270 • www.zappado.com.au

post
office
farm
NURSERY

THE
HELLEBORE
SPECIALISTS

We will be opening the nursery to the public for the first time this winter.

Come and see a huge range of flowering Hellebores.

Open Sundays 10am to 4pm
(June to September)

www.postofficefarmnursery.com.au



934 Ashbourne Rd,
Woodend.
0419 883 879

Woodend Library

Find your past at Woodend Library!

Are you a keen genealogist? Or would you just like to know a bit more about your family tree? Did you know that membership of the Goldfields Libraries entitles you to free access to a world of online family history and genealogy resources?

Want to know more?

Why not visit Woodend Library and explore your family history via Ancestry.com and Find My Past (Australian and UK editions) using our free public PCs? Or bring your laptop to the library and access the databases with our free wireless connection. Haven't got a library card? It's free to join – all you need is ID to verify your current address. Visit us in-person or join online at www.ncgrl.vic.gov.au Our Genealogy and Family History Resources webpage also offers free access to the British Newspaper Archive from home. Just log-in using your library card.

National Family History Week will be running from 29th July to 8th August. Join in the fun of free information sessions on genealogy at Gisborne Library. See our website for more information, and check out what's on all over the country at www.familyhistoryweek.org.au

Also check out the link on our home page this month - Library PressDisplay. with Access over 1700 newspapers from 92 countries in 48 languages.

Submitted by Lulu Cockram and Susie Prestney

BEAUTY IN TOUCH

Classical Beauty Therapist – Kerry Robinson

- Deep Cleansing Facials ▪
- Waxing ▪ Manicures ▪ Pedicures ▪
- Eyelash tinting ▪

Please call 0412 479 901 for an appointment
40A South Road, Woodend

This newsletter is supported by



Clarity Integrated Technology Services

...the quality of being clear, pure, or transparent

Business networking
Home audio/video & networking
Broadband/wireless
Hardware sourcing & evaluation

Making technology easy....
No matter who, or where you are

Ian Templeton

PO Box 1020

Woodend

itempleton@ovi.com

0419 556 140

DO YOU EARN INCOME IN A TRUST? HOW DO YOU DISTRIBUTE PROFIT FROM THIS TRUST?

Recent Government announcements allow some classes of Trust income to be distributed to nominated beneficiaries which can assist with managing your income tax liability.

To stream either franked dividend income or capital gains to nominated beneficiaries, you need to:-

- ensure your Trust Deed allows this; and
- pass resolutions for the 30 June, 2011 financial year by **31 August, 2011**.

Our qualified staff can review your Trust Deed to determine whether the Trustee has the ability to stream income classes to nominated beneficiaries. For Trust Deeds with ambiguity regarding streaming or the inability to stream income, we can review and if required arrange for your Trust Deed to be amended.

To discuss your Trust for the 2011 financial year or to plan for the 2012 financial year, please contact Andrew Marshall or Janine Orpwood at Langley McKimmie on 03 5427 3790.

Langley McKimmie, 85 High Street, Woodend

Website: www.langleymckimmie.com.au

Email: info@lmadvisors.com.au



WOODEND

COMPUTER SERVICE
 Sales - Service - Training & Help
 THE BANK - OFFICE 3 - 75 HIGH ST WOODEND
JASON JOHNSON - 0400528129
pcs@live.com.au

University of the Third Age

Kyneton's University of the Third Age (U3A) provides opportunities for people wishing to enjoy activities in a safe, friendly environment. U3A Kyneton members come from the environs of Woodend, Carlsruhe, Lancefield, Malmsbury and Kyneton.

U3A communities encourage people to share educational, creative and leisure activities. They organise their own activities by drawing on the skills of each other. Social interaction, a dynamic factor in optimising health and wellbeing, is an important aspect of U3A operations.

U3A Kyneton especially welcomes those not in full time employment for any reason: inclusiveness is valued. No educational qualifications are required or given.

The Third Term commences during the week of 18th July and concludes on 23rd September. Half year memberships are now available at \$15 which assists the committee in covering various costs. Otherwise, folk may become Associate Members at \$10 a Term. Visitors are most welcome. Some activities require a modest additional fee. Membership inquiries t/ph 5423 5223.

The Kyneton Community & Learning Centre (34 Mollison Street) provides meeting space for the popular Friday afternoon meetings between 2pm-4.00pm; Presentations are made by members and visiting guest speakers. Upcoming presentations include

- 22nd July: Marcie Jones & Roni Wildeboer "Assisting Australian Vietnam Veterans and Vietnamese Orphans."
- 29th July: Andrea Strack: The U.K. Eden Regeneration & Sustainability Project.
- 5th August: Judy Brady: A cruise on the Imperial Waterways of Russia from St Petersburg to Moscow.
- 12th August: Bob Evans: Peak Oil Issues.
- 19th August: Julie McLaren: "The Kyneton Transition Hub and Transition Town Initiatives.
- 26th August: Members' Forum on Issues of Interest

Other U3A Kyneton activities include bird observation, computer studies, drama, research & discussion about issues of interest, music, photography, oral history, Tai Chi and the recreational game of Lifeball. Inquiries: PO Box 1321, Kyneton Vic 3444; t/ph 5422 3828;

U3A Kyneton is an affiliated member of the U3A Network-Victoria Inc., which aims to promote a continuing lifetime of learning and wellbeing. Inquiries: www.u3anetvic.org.au and t/ph. 9670 3659.

A warm and generous welcome awaits you!

Submitted by Doug McIver Secretary U3A Kyneton Inc

Patrons for Kyneton 's Artists For Orphans

Marcie Jones and Normie Rowe along with Denise Drysdale are now Patrons of Kyneton based Artists for Orphans.

Last month Normie Rowe headlined a fundraiser that made over \$3000. The venue was the cosy Albion Hotel, Kyneton, the food contributed by proprietors Marisa and Tony was superb and the mood in the room was one of excited anticipation. Founder of Artists for Orphans, Roni Wildeboer asked Normie Rowe and Marcie Jones if they would be Patrons for Artists for Orphans and to her absolute delight, they have both accepted.



Denise Drysdale, Marcie Jones and Normie Rowe , the new patrons for Artists for Orphans

Proceeds from these fundraisers go to orphans in Vietnam badly affected by Agent Orange and to the Vietnam Volunteer Network which was founded by a former orphan of Go Vap Orphanage in Ho Chi Min City, Kim Nyugen-Browne now based in London.

Roni explained on the night that what these forgotten children need most is human touch and love and Kim recruits volunteers to travel to Vietnam to help out at these orphanages. Where we can help, explained Roni, is by raising funds for physiotherapy equipment, and medical treatment.

The next fundraiser for Artists for Orphans will be a fantastic night of music and art at Stockroom Kyneton, on October 8th. Artists such as Reg Mombassa and Peter O'Doherty have donated art for this auction.

Marcie Jones and composer/harpist Mary Doumany will give special performances and there will always be a few surprises. For more information, contact Roni Wildeboer 0424 938931 or roni@wildeboer.id.au

Submitted by Roni Wildeboer

Woodend Senior Citizens

Come and join our activities. Tuesday 1.30pm Button Bingo (win a gift), Fridays 10.30am Carpet Bowls; more bowlers please, then 1.30pm Cards.

Friday 5th August at 10.30am general meeting, trading table and speaker from HEP Steel Solicitors on various legal matters. Followed by BYO lunch, then fun afternoon and Cards at 1.30pm.

Monday 8th August bus trip to Bendigo Chinese Museum and after lunch we visit Bendigo Pottery.

Notice is given of our AGM for Friday 30th September 2011 at 10.30am. All positions will be declared vacant, election by secret ballot, ballot form will be available.

New members welcome.

Submitted by Alma Warnock President 5427 1644

Grant to help Woodend Neighbourhood Centre

The Woodend Neighbourhood Centre will receive \$19,000 from the State Government's Adult, Community and Further Education (ACFE) Board Capacity and Innovation Fund 2011 to help them better serve the needs of learners in the Macedon Ranges, said Donna Petrovich, State Member of Parliament for Northern Victoria Region.

"The Capacity and Innovation Fund 2011 will provide 115 Learn Local organisations across Victoria with grants totalling \$4.2 million," said Mrs. Petrovich.

Mrs. Petrovich said the grants help adult community education organisations such as Woodend Neighbourhood Centre to expand their services, improve efficiency, offer new courses and increase the participation and attainment of learners.

"The Capacity and Innovation Fund is an initiative that will encourage innovation within adult education and support a sector of the Victorian education system that already does vital work in supporting adult learners," Mrs Petrovich said.

"Each year the state's 320 Learn Local organisations provide education and training to more than 110,000 people, offering vocational, language, literacy and numeracy and work-skill courses.

In the 20 years that the community-based adult education sector has been recognised in Victoria by legislation, these organisations have helped countless thousands of people to an education and employment pathway, said Mrs. Petrovich

Submitted by the office of Donna Petrovich MLC



Opening 12th August
5424 8119

All news items, articles and community news columns must be received by 15th of each month.

CROWTHERS FURNITURE

- Wardrobes - Laundries - Entertainment units
- Studies - Libraries - Kitchens

0458440455
crowthersfurniture@gmail.com



Introduce your child to the magic of music

Our unique Australian music programs for babies and young children aged 6 months to 5 years are carefully developed by early childhood music education experts.

Educate, energise and excite your child with the love of music through singing, dancing and playing instruments.

Are you looking for a warm, indoor winter activity for your child that is both **fun and educational?**
Term 3 is enrolling now with venues throughout the Macedon Ranges.

Phone Jo on 0417 703 690 or 5426 4719
visit www.minimaestros.com.au



We deliver to your home the

freshest, best quality, certified organic fruit & vegetables available & guarantee this 100%

Pick from a range of pre-selected boxes or select your own order from our weekly availability list

Phone: **0409 386 875** or **5429 1156**
email: vivien@netcon.net.au

www.vivsorganics.com.au

Quality Blinds at factory direct prices

- Sunscreen/Blockout Blind
- Latest Styles/Fabrics/Colours
- Automated Blinds
- Roller/Roman Blinds/Venetians
- Exterior Awnings
- Professional Installation Team

Ring Now for a Free In House Consultation/Quotation
Mark 0437 759013 Simon 0458 338995

Contemporary Blinds
Where Style is Affordable

Living World Christian Church

Weekly Sunday services at

- Romsey, 7 Mitchell Court, 10am
- Woodend, Community Centre, 6pm

All welcome. We also offer Mid week Life groups for Children, Women and Men. Please contact the Church Office for more information 5429 6328, or email livingworld@iprimus.com.au

Submitted by Denise Eddy



Financial services you can trust

Bob Nixon - Authorised Representative,
Total Financial Solutions Australia Ltd

ABN 94 003 771 579 AFSL No.224954
PH: 5428 0123
www.nixonfinancialservices.com.au

Total Financial Solutions
committed to your success



Become more self-confident - from horses!

An innovative self-empowerment program involving horses has been launched at Newham.

Equine Guided Education Australia (EGEA) "Horsepower for Women" programs offer new perspectives on life's changing dilemmas and opportunities.

Co-founder, Kay Ivanac, said having horses as guides makes the programs at EGEA truly unique, as they help us to identify what's holding us back in minutes - a process which could take months in traditional coaching type sessions.

"During our programs, participants often gain life changing insights, resulting in completely changing their approach to themselves and their personal and professional relationships. The horses teach us how to avoid aggression to compensate for lack of assertion and build the self-assurance we need. With horses as facilitators, women can gain clarity around their own direction, gifts and strengths while increasing their self-confidence, enhancing communication and negotiation skills. It really is an amazing process to witness."

Equine Guided Education Australia offers unique, powerful experiential exercises, geared towards developing self-knowledge and self-responsibility.

Equine Guided Education programs have been running successfully in the USA for more than 20 years. An internationally recognised pioneer in the field of equine-guided education, Ariana Strozzi, said the reason these types of programs were so successful was because the horses' intuitive perceptions are so refined.

"People accept feedback from a horse exponentially faster than they do from humans," she said.

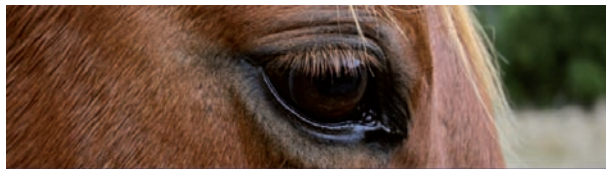
"People trust the horse's reflection as honest and direct."

Ms Ivanac said Equine Guided Education Australia's structured programs exemplify the profound and valuable aspects of learning one's strengths and weaknesses in communication and relationships, both personally and professionally.

"Participating in an Equine Guided Education Australia program does not require any prior knowledge of horses on the part of the human participants. It requires a spirit of curiosity and a willingness to doing things differently," said Ms Ivanac.

EGEA runs regular "Horsepower for Women" programs. For more information go to www.equineguidededucation.com.au

Submitted by Kay Ivanac



Want More Confidence? The key to your self-confidence may just be... a Horse!

An amazing new program:
Horsepower For Women
offers individual and group
coaching sessions in Newham.
Our Accredited Equine Guided
Educators facilitate a series of
activities incorporating
Horses and Life Coaching.

These programs help you
Become more Self-Empowered
Increase Self Confidence
Define & Achieve Your Goals
& Live the Life of Your Dreams!

****No Horse Experience Needed****

****All activities are done from the
ground—NO Riding****

email: kay@egea.com.au

ph: 0419 609 226

***Experience the Magic of Horses
& See for Yourself how Horses Can
Help You Heal Your Life***



EQUINE GUIDED EDUCATION AUSTRALIA
Horsepower For Human Development

**To learn more about the programs
how they work and why horses
please visit our website:
www.EquineGuidedEducation.com.au**

Truck & Bobcat Hire

Paving Turfing Rockeries
Paling & Colourbond Fencing
Watering Systems Retaining Walls
All of your garden and driveway
construction catered for

CD & MC Muir Pty Ltd
craig@bobcatcraig.com

0417 331 085 5427 3095



R.S.L Women's Auxiliary.

The cold wintry weather is now upon us and the numbers for the last Dine and Dance were down quite a bit. Kyneton nursing homes decided not to venture out with their buses due to the frosty conditions of our roads. Cobaw Community Care always take a break in July but will be back for our next Dine and Dance on 10th August. Gisborne braved the cold as did some of our locals and a good time was had by all. Andy D always gives us a great afternoon. He will be back in September. Sharon and Judy will be with us on 10th August with karaoke.

We have been shorthanded the last few weeks. Several of our auxiliary girls are on the sick list, we wish Margaret, Joy and Barbara our best wishes for a speedy recovery, and Karen with Barry are touring for 3 months chasing the sun.

Our R.S.L is very proud to announce that at the conference in Melbourne our R.S.L received an award for recruiting the most new members. The award was accepted on R.S.L's behalf by Vice President Reg Till.

As the weather is so cold the Friday night meals are now only on the first Friday of each month. Meals are very reasonable, the bar is open, the hall is warm and cosy, but please book early either R.S.L 5427 3122 with Reg or myself at 5427 2225.

The Celts and Cobbers, held the second Friday each month, are proving popular and well worth a visit. \$5 entry. Just come along and enjoy.

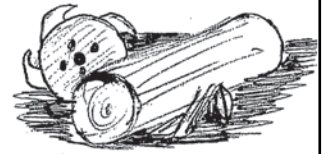
We will be having a Dutch Auction sometime in August. Date to be announced so look out for the posters around town. These are great fun with popular Helen Roberts the auctioneer.

Our first bingo attempt was not a success due to a bus trip and another event held on the same day. We decided to try again when the weather is better.

Submitted by Betty Barned. Secretary.

MADDEN'S PORTABLE SAWMILLING SERVICES & SALES

Turn your unwanted trees & logs into VALUABLE TIMBER



Call Craig on 0410 275 714

Grantra
HOME IMPROVEMENTS
Specialising in Bathroom Renovations

PO Box 736, Woodend 3442
0418 175 877
www.grantrahomeimprovements.com.au

Master Builder
REGISTERED Building Practitioner

LEADING HAND CARPENTRY
COMPLETE BUILDING SOLUTIONS

· quality workmanship · effective project management
· new homes · extensions · renovations

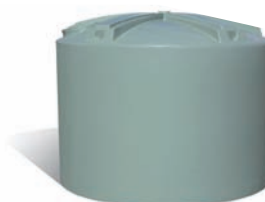
HIA
REGISTERED Building Practitioner
Call 0439 360 896 or email shannon@lhcarpentry.com.au

WOODEND NURSERY & GARDEN SUPPLIES
OPEN 7 DAYS
"LOCAL KNOWLEDGE FOR LOCAL CONDITIONS"
36 URQUHART ST, WOODEND
Tel: 5427 1866 Mobile: 0428 271 866
Full range of garden & landscape needs
Rock, Soil, Sands, Sleepers

WOODEND MOWERS

Now stocking urban and rural poly

UP TO \$1000 CASH BACK ON TANKS, see in store for details.



10000 Ltr \$1525

POLY TANKS
Round & Slimline
Stock troughs
Cartage tanks

BIG DOG
zero turn mowers
coming soon
prices starting
from as little as
\$5300



Stocking Australia's best brands



Ph: 54 273 116
Mob: 0407 122 233

OPEN 7 DAYS
988 Blackforest Drive, Woodend

COLENZO

OPEN

www.colenso.com.au



FRENCH BISTRO SERIES

Saturday August 6

Salade Lyonnaise
Boeuf Bourignon
Brillat Savarin

Saturday August 13

Moules marinière
Gigot d'Agneau with flageolet
Apple crepes

Saturday August 20

Brandade de morue
Cassoulet
Roquefort with poached pears

Saturday August 27

Soupe a L'Ognion
Steak frites
Pear Frangipane



Book online www.colenso.com.au or phone 5427 2007 42D Anslow St Woodend

Woodend District Netball Club

Thank-you.

The Woodend District Netball Club saw a new committee commence in December 2010. We would like to take this opportunity to extend a big thank you to the past committee for all their hard work, dedication, ongoing development of the club and for inspiring so many boys and girls to be active within the sport of netball and their local community. Past committee members- Rhonda Scanlon, Rachel Crook, Joanne Green, Jenny Boldiston, Mia Gartley, Shelly Giddings, Bernadette Petruccelli and Vicky KIELTY. These women have given so much of their time and experience over the past 10 years and the children of Woodend and surrounding districts are the better for it.

Woodend District Netball Club provides opportunities for boys and girls aged 5 - 18 to participate in the sport of netball on Saturday mornings (Winter) and Friday evenings (Summer) at Buffalo Stadium. Modified programs are offered for those starting out in the sport - Net Set Go through to mixed U/18 competitions.

Children of all abilities are encouraged to play and the club's philosophy is based on participation of players, their families and the wider community. Participants receive coaching from accredited coaches, teenagers are encouraged and supported to take up coaching and umpiring, and the club provides a welcoming environment for all families, new and old.

Providing this opportunity enables children and teenagers in the area to be active, learn new skills and build

social connections. It also provides adults with similar opportunities for participation in community life via a range of volunteering roles.

Winter Season.

At present we are half way through the Winter season. With over 100 participants it is truly the place to be on a cold Woodend Winters Saturday morning. The Net Set Go program commences at 8.30am where parents and children brave the cold for fun, fitness and friendship. The children are taught basic netball skills from accredited coaches; receive a Net Set Go backpack with a netball, water bottle and more. The Under 11 and Under 14 games follow and has proven to be very competitive with many games ending in a draw or so close it's become a nail biting event! The Winter competition will finish on the 17th September with the Under 11's Round Robin and the Under 14's Grandfinal.

Vic Health Active Club Grant

In April this year we were fortunate to receive a Vic Health Active Club Grant which enabled us to fund 10 participants for a foundation coaching course run through Netball Victoria. It was highly successful and allowed us to increase our knowledge, skills and understanding of the game.

Squad Teams

Four Squad teams will represent our club at the Gisborne Tournament on 31st July and at the Banyule Tournament on 21st August. These are fantastic days for the players as it exposes them to the wider netball community where greater experience and confidence is gained.

Summer Season will commence at the end of October with registrations open to all players 18 and under.

For further information please contact Rhonda Hill (Secretary) 5427 2085 / 0419 323 095 or Andrea Norden (President) 5427 3529 / 0403 043 222 or visit our website woodend.netballvic.asn.au

Submitted by Andrea Norden



Woodend Produce Store

31 Brooke Street Woodend

Ph. 0354272753

**Poultry, Stock & Horse Feeds,
Hay, Grain, Chaff
Pet Food, Hardware, Fencing,
Electric Fencing, Tanks, Oils & Lubes,
Irrigation, Potting Mix, Fertilizer,
Herbicides & Much More!!
Elgas LPG Deliveries
We fill BBQ Gas Bottles**

NOW OPEN TILL 4PM SATURDAY

**Come in and see Wayne, Mick & Albert
for friendly service and expert
knowledge.**

Sports Trivia Night

A Sports Trivia Night, held jointly by the Woodend/Hesket Football and Netball Club with the Woodend Golf Club is set down for Friday 5th August starting at 7pm.

The venue will be the football clubrooms and your compare will be Ken Helmore.

Cost is \$20.00 per person. Supper provided and drinks available at bar prices.

To book a table of 6, please call Bill Hickey 5427 2948

Submitted by Bill Hickey

NEIL J TURNER

- FENCES
- GATES
- IRON WORK
- STONEMWORK

NEILTURNER.COM.AU

0409 285 256

This page is proudly sponsored by the 19th HOLE SHOPPING CENTRE



Upcoming Events

August

- 2 Carlsruhe Community Planning evening
- 5 Sports Trivia Night, Woodend/Hesket Football & Netball
- 5 RSL Dinner & Entertainment
- 7 St Mary's Hall fundraising Piano Recital, Braemar
- 7 Woodend Pony Club 40th Anniversary Cross Country
- 10 Macedon Ranges Film Society, Ed Wood
- 12 RSL Celts & Cobbers
- 27 Trivia Night, Woodend Playgroup,
- 28 Victorian Welsh Choir, St Ambrose Church

September

- 2 RSL Dinner & Entertainment
- 9 RSL Celts & Cobbers
- 14 Macedon Ranges Film Society, Adaptation
- 16 RSL Dinner & Entertainment
- 18 Resonance String Orchestra, Church of Resurrection Macedon
- 29 Men of Steel - Kids Show, Kyneton Town Hall

October

- 1 RSL Dinner & Entertainment
- 8 & 9 Woodend Art Show
- 14 RSL Celts & Cobbers
- 8 Artists fo Orphans, Music Night at Stockroom Kyneton
- 12 Macedon Ranges Film Society, The Sound of one hand clapping

November

- 2 NMIT Kyneton Cup
- 4 RSL Dinner & Entertainment
- 9 Macedon Ranges Film Society, Some Like It Hot
- 19 Kyneton Show

March 2012

- 3-4 Relay For Life Lancefield Park

COMMUNITY GROUPS CONTACT DETAILS

Alcoholics Anonymous Friday night, Cobaw Community Centre 0409 131 144

Australian Breastfeeding Association, Heather 5427 2398

Cobaw Thursday Walking Group 5427 3340

Daylight Masonic Lodge, 5427 2480

1st Woodend Scout Group, 5427 4968, Jenny

Friends of Macedon Ranges Library, Chris/Bill 5427 2469

Garden Club 5422 6062 / 5427 3340

Kyneton Municipal Band Doug 0411 420 113

Lancefield-Macedon Ranges Relay For Life Melissa 0438 831 427

Living Word Christian Church 5429 6327

Historical Society, Courthouse, 5427 2523

Macedon Ranges & District Motor Club, 10 Webb Cres, New Gisborne 1st Wednesday each month 8pm

Macedon Ranges Animal Aid, Buffalo Sports Stadium, 5427 1752

Macedon Ranges Bridge Club, 5420 7595

Macedon Ranges Families of Children with Disabilities Support Group, 5427 3365

Macedon Ranges Residents Assc. 5427 1481 or 5427 2651

Macedon Ranges Communicators (ITC), 5427 2669

Macedon Ranges Photographic Society, Ron Mathews 5427 3284

Parent Support 4 LD- Kerrie 0414 432 158

Probus, 5427 2003

R.S.L., Anslow Street 5427 3122

Red Cross, 5427 1260

Rotary Club of Woodend, meetings weekly at Vic Hotel Thursdays 6.45pm, Brendan 5422 6442

St. Mary's Guild, 11am, 4th Wednesday of month

St. Mary's Street Stall, 9-12 noon outside Woodend Newsagency (2nd Sat of the month)

Woodend Landcare Group, Jo 5427 1909 or Doug 5427 0666, 3rd Tues Meeting, 4th Sunday Working Bee

Woodend Angling Club, RSL Hall, 5427 2395

Woodend Art Group, Railway Station, 5422 6172 or 5427 1659

Woodend Hanging Rock Petanque Club, Hanging Rock Reserve Ph: 5427 2477

Woodend Lions Club, Meetings 2nd/4th Wednesday each month, ph Robyn Roberts 5427 1342

Woodend Model Railway Club, Buffalo Stadium

Woodend Pony Club, 5427 2793

Woodend Senior Citizens Club, Comm. Centre

Woodend SES Training Nights Monday, Urquhart St

Woodend Tennis Club Nadine 0439 399 838

Woodend Winter Arts Festival Inc., Jacky 0417 225 268

- | |
|--|
| Ian Marks Liquor
1300 627 575 ext 24 &34 |
| Blue Orange Concepts: homeware
5427 4500 |
| Woodend Pizza & Pasta
5427 3777 |
| Coles Supermarket
5427 2377 |
| Collier Office & Business Assist and Woodend Copy Centre
5427 3092 |
| Pets Haven
5427 3603 |
| Mitre-10 Woodend Hardware
5427 2314 |
| BP Woodend
5427 2248 |
| Target Country
5427 4366 |
| Macedon Ranges Travel Services
5427 4777 |
| Kosmac & Clemens: optometrists
5427 4577 |
| Woodend Cycles
5427 2662 |
| Salvation Army Family Store
5427 4421 |
| Loose Change Bargains
5427 4466 |
| Bodywise Underwear
1300 66 17 66 |
| Australia Post
5427 2600 |
| Feeling Framed
5427 4455 |
| The Spa Beauty Therapy Centre
5427 3322 |
| HIGH STREET SHOPS |
| Color Me Cooper
5427 1454 |
| Chelleon For Hair
5427 3246 |
| RT Edgar Real Estate
5427 1222 |
| Woodend Bakery Cafe
5427 3434 |

All Community groups and events are invited to submit their dates for listing on the Community events calendar

Peter Baker & Associates Barristers & Solicitors

**Family Law
Criminal law
General & Commercial Litigation**



Peter Baker BSC & LLB (MONASH) **Juliana Smith** BM GDLP & LLB (UNE) **Fran Medina** BA LLB

By Appointment at: **27 Urquhart St. Woodend**
Head Office: 389 Hargreaves St, Bendigo
info@peterbakerlaw.com.au
Ph: 5441 7300 Fax: 5442 4232

FREE FIRST INTERVIEW*

*For advice only matters

Carlsruhe community corner

Community Planning Group:

Play equipment and a BBQ for the Carlsruhe Common has been ordered. Residents should see installation beginning in 8 weeks. Entrance Signs are now in place at the entry points to the township along Cobb & Co. Road and Three Chain Rd.

Landcare group:

If anybody within the Carlsruhe area needs assistance in removing gorse or other noxious weeds from their property please contact the Carlsruhe Landcare Group at carlsruhelandcare@live.com

Diary dates:

- Community Planning - Tuesday 2nd August @7.30pm at Carlsruhe Fire Station.
- Landcare - Monday 1st August @ 7.30pm at Carlsruhe Fire Station. All welcome .

Anyone wishing to submit or request further information to either group please contact us via . carlsruhecp@live.com or carlsruhelandcare@live.com

Submitted by Margaret Glen



start your Aikido journey

**Simon Harris, 5th Dan
Japanese trained**

Tues & Thurs evenings
7pm, Macedon Community Centre,
Tony Clarke Reserve,
Waterfalls Road, Macedon



www.iwamaaikido.com.au
0417 505 611



★ ★ Polaris ★ ★ Financial Services Pty Ltd

1605/530 Lt Collins St Melbourne Vic 3000
Tel 9629 4979 & 9629 4975 Fax 9629 4973

Strategic Financial Planning - Holistic Appropriate Financial Advice
**Our comprehensive services
are available in the Macedon Ranges.**

- Strategic financial advice.
- Tax effective savings strategies
- Social security specialist
- Retirement & Superannuation
- Wealth protection & Insurances
- Financial life strategies
- Self Managed Superannuation Funds

Polaris welcomes your enquiries and there is no cost for an initial one hour appointment. Over this initial hour we discuss your personal needs and objectives and from there, work with you towards the most appropriate financial strategic plan.

**Local by appointment only, Macedon
Ranges Business Centre, High St Woodend
Call Anneliese to book 0413 373 884**

Polaris Financial Services Pty Ltd ABN 99 13110 5514
Is a corporate Authorised Representative (No. 327962) of
Australian Financial Services Ltd (AFSL 297239).
Anneliese Willmott Adv Dip FS (FP) is an Authorised Representative
(No. 268440) of Australian Financial Services Pty Ltd AFSL 297239).

Specialising in:
CAR PARK KERBS • ASPHALT EDGING
GARDEN EDGING • VARIOUS PROFILES
REPAIR WORK

IAN
0409 443 036

CASTLEMAINE—GISBORNE CLEANING SERVICE

CHRISTINE ADAMS, FRYERS ROAD, ELPHINSTONE 3448

**Carpet Cleaning Specialists
Duct Cleaning, Window Cleaning, etc.**
For all your cleaning requirements

- no job too big or too small -
obligation-free quotes

Tel: 5473 3307 Fax: 5473 3310

Mobile: 0419 006 591



Magnetic Websites

Martin Beaumont

PHONE 03 5427 4478
 MOBILE 0414 274 988
 HTTP www.magneticwebsites.com.au
 EMAIL martin@magneticwebsites.com.au

Developing websites for the Macedon Ranges and beyond, ask how we can help you get online

Men of Steel - Kids Show

2 Sessions: Kyneton Town Hall

Voted one of the top 7 shows for children by Time Out London. The show features three mad chefs, two cookie cutters, food, and a host of familiar kitchen utensils in a chaotic puppet extravaganza of epic proportions! Men of Steel fuses cooking, physical theatre and intricate object puppetry in a hilarious examination of the consumptive society in which we live.

Featuring explosive popcorn, watermelon slashing and the felling of a broccoli forest, our cooks whip up three uproarious, mess-filled episodes back to back! Cartoon violence, physical comedy and mess (lots and lots of mess) ensues!

Thursday 29th September 10.30am to 11.15am and 2pm to 2.45pm at Kyneton Town Hall, phone bookings: 1300 88 88 02

Submitted by MRSC Arts & Cultural Development Unit



kitchen cook table home
Blue Orange Concepts



New Wave
5 in 1 multi cookers

Pressure cooker, slow cooker,
Electric Pan/Pot, Soup pot,
and a Steamer/Rice Cooker.

Now 6 litre and still \$199.95

- 2 Pressure Levels, - High Speed pressure for extra fast cooking & Low speed for improved vitamin retention.
- Stainless steel removable cooking bowl.
- Automatic keep warm setting
- Digital timer with countdown.

Shop 2 130 High Street, Woodend 3442
 Telephone 03 5427 4500
 Closed Sunday

News from Newham

The Hall committee AGM will be held on Wednesday 10th August at 7.30pm at the Newham Hall.

All Committee positions are vacated and the election of new office bearers takes place with supper to follow. We hope as many members as possible come to give Ian and Val a good send off after giving a combined 45 years of service to keep the hall not only standing but financially viable. Ian came to the Hall in his professional capacity when the front wall was about to fall down and stayed and Val has been the driver behind keeping the hall going. If it weren't for them, Newham wouldn't have a community hall. I am sure all Newhamonians not only thank them for all they have done but wish them well for their "retirement" - they will have a lot more spare time!! Barrie Sutton has also given many years of service - both as Treasurer and as Public Officer.

We now have an advertising brochure ready for distribution, (produced by Geoff Cohen) so we expect to increase the hire bookings.

Would anyone in the community be interested and/or willing to continue collecting Newham's history? I have been doing this for the last 12 years -perhaps it is time for someone else to take over! Please feel free to contact me on 54 22 68 45.

Don't forget Margaret Armstrong's - Eating for Healthy Ageing, Winter Lecture to be held at the Hall at 7.30pm August 19th. These lectures celebrate what Mechanics Institutes original aims were. We hope to see everyone there.

Submitted by Sally Stabback

THE NEW WOODEND STAR
the voice of the community



Feel sensational
at The Spa

Our team of professional and passionate therapists can assist you with all of your needs... From essential waxing to purely indulgent facials, massages, body treatments and more, we are here 6 days a week.

The Spa
Beauty Therapy Centre

Gisborne | 3/31 Brantome St Gisborne 3437 | 03 5428 8800
 Woodend | 41 Anslow St Woodend 3442 | 03 5427 3322
 www.thespa.com.au

Lachlan Fleming
CONSTRUCTIONS Pt 1
SERVICING THE MACEDON RANGES
0401 499 898
EXTENSIONS
RENOVATIONS
NEW HOMES

REGISTERED Building Practitioner

Master Builder

The 2011 NMIT Kyneton Cup

Kyneton Cup, Wednesday 2nd November, is once again fast approaching with Melbourne Cup Week just over 3 months away. Local residents should plan now to incorporate the 2011 NMIT Kyneton Cup in to your Melbourne Cup Week Activities. The NMIT Kyneton Cup is one of Country Victoria Biggest Events attracting around 6000 people and the Kyneton Cup this year will be worth \$100,000 plus a fantastic trophy supplied by local firm Flynn's Silver.

The Kyneton & Hanging Rock Racing Club released Hospitality Packages for sale in late June and as of last week had sold over 350 packages with the Campaspe Room already Sold Out. Last year the Club sold over 2100 Hospitality Packages with packages purchased by people as far away as Japan, Hong Kong and New Zealand who incorporated the Kyneton Cup in to their tour schedule.

Admission this year is \$20 per adult, and \$12 concession for tickets purchased at least 14 days prior to the event and \$25 per adult and \$15 concession for all tickets purchased on the day. The Club has implemented this strategy to encourage people to book early to minimise queuing on the day. The Club is also going to create express entry lanes for pre purchased tickets for quick entry, so book your tickets early. For details about the day and what packages are available go to kyneton.countryracing.com.au or call the Club on 5422 1866

Submitted by Mark Graham, Club Manager
Kyneton & Hanging Rock Racing Club

This is George!

George (lovingly called Jeppy George) is a rescued Brumby pony from Jeparit, Victoria. Unlike over 100 of his herd, he has been rehomed and escaped termination.

These ponies, George and his herd, had been left to roam free and neglected for many, many years, and until this time, George has never been touched by human hands.

It is with best intentions, that we are committed to his rehabilitation, to be brought back to health and given the opportunity to trust in humans again.

We have received heartfelt support from our Woodend community and some generous donations to assist in George's successful development...and we thank those of you who have been drawn to George's story.

If you too would like to contribute to the life and progress of Jeppy George, Please contact us, we are happy to receive further advice, encouragement, and of course, any donations i.e. wormers, de-lousing treatment, feed, rugs (he has already gone through one- as it was the first one he has worn). To be included in Georges story / information and further progress, please contact Marieke & Rob Featonby 0413 529 696.



© Rob Featonby

Submitted Marieke Featonby

Welcome to the Woodend Star Kids Club July Birthdays

2nd	Allea Ferguson.....	Turns 12
2nd	Sophie Marsh.....	Turns 13
6th	Charlotte Dinsdale.....	Turns 8
10th	Michaela Frantz.....	Turns 10
13th	Cody Merlo.....	Turns 6
116th	Connor Lever.....	Turns 11
22th	Kyra J Perry.....	Turns 12
27th	Brady Muir.....	Turns 6
29th	Christian Adamcewicz.....	Turns 11
30th	Grace Cooper.....	Turns 8

Happy Birthday Everyone!

JOIN THE WOODEND STAR KIDS CLUB

Fill in your details below and send to P.O. Box 387 Woodend
Age limit is 13 years old. Must be a resident of the 3442 postcode

Full name: _____

Address: _____

Date of Birth: _____ Age: _____

Phone: _____

Parent/Guardian _____

Signature: _____

Sponsored by:

 **Collier Office
and Business Assist**

Shop 5, 130 High St, Woodend. P: 5427 3209 e: sales@collieroffice.com.au

**You can collect your birthday surprise by
visiting Collier Office & Business Assist**



jigsawstairs@optusnet.com.au

0408 153 124

**JIGSAW
STAIRCASES**

P.O Box 93 Woodend Vic 3442

Studio Two

Program Times

Junior Intermediate (5 – 6 years)	Monday	4.00pm – 5.00pm
Intermediates (7 – 8 years)	Monday	5.00pm – 6.00pm
Advanced intermediates (8 years +)	Monday	6.00pm – 7.15pm
Hip Hop (6 -10 years)	Thursday	4.00pm – 4.45pm
Tap Intermediates	Thursday	4.45pm – 5.45pm
Hip Hop (10 – 14 years)	Thursday	5.45pm – 6.30pm

Learn dance in a fun, encouraging atmosphere with a qualified dance instructor. Enjoy this relaxed alternative to traditional dance schools.

Woodend - Buffalo Stadium - Monday & Thursday Nights
 Gisborne - Gisborne Community Centre - Tuesday Nights

• Tap • Ballet • Hip Hop • Jazz

Miss Anita has many years experience in several different dance styles and has qualifications including Diploma of Performing Arts and a Diploma of Theatrical Tap

Contact Buffalo Sports Stadium for inquiries and bookings

5427 3411

Squash Club Championships

Macedon Ranges Squash Club recently held its graded club championships and for all 8 players a win would get their name on the honour board for the first time.

The D Grade Championship was contested between Nathan Evans and Darren Harman. Both had tasted team success this week but both wanted the individual prize. The game went point for point until Darren was able to string a couple of consecutive points to run out the winner 10-9 9-3 1-9 7-9 9-7.

In the C Grade Final, Luke Sandstrom was up against Rob Walker. Luke covered the court effortlessly and was soon out to a 2 game lead. Rob found his second wind to grab the third by controlling the rallies. The big effort took its toll however as Luke regrouped and eventually won 9-6 9-5 3-9 9-2.

The B Grade Final between Glen Hastie and Brian Renwick was another up and down affair. Glen got out to an early lead before Brian started to match him point for point. He couldn't however reel in the lead and Glen won 9-3 9-7 6-9 4-9 9-5.

It was now time for the A graders to hit the court. Jason Gladman was up against Mark Wiegierink. The rallies showed a great mix of touch and power. Jason was determined to have a good result and dominated the rallies from the front and back of the court. In the end he proved too strong winning 9-4 9-2 9-4. These two are sure to have a rematch later in the year in the Men's Open Championship.

Anyone interested in joining the Macedon Ranges Squash Club should contact Bill on 0488 348 898. The club offers competitions in both Kyneton and Romsey and caters for all levels of players.

Submitted by Bill Hutcheson



ADVANCED EQUINE DENTISTRY

Winner 2009 Macedon Ranges Business Excellence Awards for Young Business Person & Professional Services categories

Mobile services for Macedon Ranges
www.advancedequinedentistry.com.au

Dr Shannon Lee BVSc
0418 598 621
we come to YOU!



May Five on High · Home Self Others


At May Five on High we pride ourselves on great service combined with the most up to date quality Australian and International fashion.

Along with exclusive labels of **Yarra Trail, Boo Radley, Australian Vigorella and Italian Knitwear by Moda Image**, don't forget our collection of individual lines in jewellery and home wear.

Experience our range of gorgeous fashion jewellery, including bronze earrings as well as our scarves from Italy, France and India, cashmere wraps from Inner Mongolia along with a range of beautiful hats and gloves.

Come in and experience the exciting new High, at May Five.

Open 7 days, May Five on High, 4/81 High Street Woodend (opposite Clock Tower next to Keatings) ph. 5427 3863.



bringing art to life

Custom picture, artwork, tapestry and memorabilia framing, professionally and economically performed in-house.

A comprehensive range of Art supplies at very competitive prices.

- Pencil & paint by numbers sets for youngsters
- Artist's quality brush and paint sets for the more experienced
- Matt boards and mounts for artwork presentation
- Books & magazines for the art enthusiast, or those just wanting a good read

43 Anslow Street, Woodend – 5427 4455
Next to the post boxes
feelingframed@bigpond.com

WEIGHT LOSS PILLS

Lose around 10 kg in 2 months
100% Natural Plant Extracts and Safe
1 Box \$50 (1 month supply)

Guarantee- If this pill doesn't work for you, we'll give you a quick, hassle free refund

Phone: 0435 185 934 43 Anslow Street Woodend

Remembering Annette Wiber

Annette Mary Wiber (nee Powell), a Woodend resident of 65 years, passed away peacefully in her 98th year, on 25th June 2011.

Annette was born in Toowoomba, Queensland, at the end of World War I. Her father, Ronald V. Powell, a grazier, soon moved the family to the small rural town of Undera in Northern Victoria near Shepparton. In her younger days, Annette spent time as a boarder at St. Catherine's School in Melbourne and also at a girl's school in England.

As a young woman in the Second World War she worked in munitions and did bread deliveries by horse and cart. 1946 saw Annette move to Woodend, the place she would call home for the rest of her years. She resided at "Ballymoyer" on Ashbourne Road with her husband John whom she married in 1956. John passed away in July 1988, and Annette remained at Ballymoyer until August 2000, when she sold the property and then resided with close friends.

Throughout her life, Annette had a few great loves; golf, tennis, fly fishing, her beloved cocker spaniels, and "good old Collingwood". Her love of golf in particular led to a long and valued association with the Woodend Golf Club. Annette was a continuous member of the Club for over fifty years, a life member, Ladies President on two occasions, as well as winning 11 club championships and representing the Woodend Golf Club in numerous pennants, teams and events.



Over the years, many of the trophies played for at Woodend have been donated by Annette and John Wiber – the Ruby McKenzie Silver Tray, the Mary Allpress trophy and the Woodend Hillside Association Cup. Annette would also discreetly and generously donate trophies for tournament days and continued to sponsor various ladies events annually right up until her death.

In 2006, Annette approached the Woodend Ladies with a magnificent trophy won by her father for rowing at Cambridge. It had been hocked in war times, and retrieved after the engraving was removed, from Hardy Brothers in Melbourne. A modest Annette did not care what it was used for, but thought it deserved a continued life. She also generously donated the money to have the trophy mounted, and Woodend Ladies now proudly hold the Annette Wiber Open in her honour.

In her playing days, Annette was also a very active member of the club, helping tirelessly in the kitchen and supporting the ladies functions. In the 1949 era, she was on the building committee for a new clubhouse and extensions, opening her home "Ballymoyer" for fundraising events. She was a very willing player, always assisting "scrubbers" in pursuit of their golfing game, making newcomers feel welcome and a part of the club.

Annette was also a keen supporter of the Woodend Lions Club Annual Art Show, having attended the inaugural show along with her late husband John and being a sponsor since the beginning. Annette continued to attend the Art Show every year until very recently, and for 36 years the John and Annette Wiber Award has been presented to the Best Artist Under 16 Years.

Annette was a private person, who did much in the Woodend community in her understated, quiet way. She kept in remarkable good health up until very recently, maintaining her zest for life until the end. Apparently only a couple of years ago, at the age of 95, Annette went for her annual health check-up. Her doctor said he did not need to see her for another twelve months, so Annette remarked that since she had at least another year left, she would buy herself a new car, and she did!

Annette's health began to fail after a bad fall in 2009 and in February this year she was hospitalised. She passed away peacefully at the Trentham Nursing Home, and will be sadly missed.

Submitted by Kathleen Keating with Woodend Ladies Golf Club


ADVERTISEMENT

Donna Petrovich MP

State Member of Parliament for Northern Victoria Region
Parliamentary Secretary for Sustainability and Environment

Working for the Macedon Ranges Community

Your Country Voice



☎ 5782 2011
84 Sydney Street, Kilmore
✉ donna.petrovich@parliament.vic.gov.au

Authorised by D Petrovich, 84 Sydney Street, Kilmore.

Joan P Jane
PSYCHOLOGIST

0403 046 048
5426 4165

- Stress • Post Traumatic Stress •
- Anxiety • Depression • Relationship • Family •
- Mental Skills Training • Sport • Self Esteem

The Bank
75 High St.
Woodend 3442

Bulk Billing
(Medicare - DVA - GP Referral)
Provider Number 2827013A
joanjane@bigpond.com

Heritage Society News

In the last two Heritage News columns we gave accounts of entertainments which took place at the Woodend Mechanics Institute just on a hundred years ago. Given the interesting debate, and recent investigations in to the administration of the Victoria police force, the following description of some local events in 1886 may be of interest! Once again the venue was the local Mechanics Institute, which, even before the present 1893 building was built, was without doubt the hub of the majority of local happenings. From *The Argus*, 22nd March 1886.

THE RECENT RIOT AT WOODEND:

The inquiry into the conduct of the Police at Woodend on the evening of the 3rd of March, when Mr. J. Symes* attempted to lecture there, was continued on Saturday by Inspector Superintendent Chambers. The complainant Mr. Symes continued his case and called the following witnesses.

Joseph Symes Freethought lecturer gave the following evidence on affirmation: - *I was at Woodend on the evening of the 3rd March, and attempted to deliver a lecture at the Mechanics Institute. As I was going into the hall I was struck with an egg, but I do not know who threw it. About two minutes after I began speaking some young men made a disturbance, and simultaneously a great noise was made outside. Eggs were thrown in the room. Later on the noise increased; seats were overthrown, and stones were thrown outside against the walls and on the roof. Owing to the disturbance I was not able to speak for more than half an hour. In fact, it was only an attempt at a lecture. I never saw a policeman in the hall, but when someone said during the disturbance that the police were coming, I replied that I did not want the disturbers punished. Although I said this, I did not see that there was a policeman in the room. I do not think a policeman in uniform could have been in the room without my seeing him. Some of the*

eggs that were thrown came from the direction of the doorway. At all public meetings the chairman is supposed to have control of the proceedings, and therefore if anyone gave the policemen orders not to interfere it should be the chairman. After the disturbance, Mr Shires, some others and myself locked ourselves into a room at the back of the hall. It was not my wish that we should go into this room because in my opinion it is always best when there is a disturbance to face it, but there were some ladies in the hall and on the advice of other persons I went in there. We remained in the room for an hour and a half. It was perfectly dark. Afterwards we managed to get out a back door. The crowd chased us over several fences to Constable Lawless's house, but we were refused admission there. While the mob was all round us, Mr Shires tried to make terms. While he was speaking an egg struck me. I then picked a stool, and telling Mr Shires not to make any terms but to fight it out went at the crowd. I do not know exactly what took place, except that in a minute or so the stool was taken from me, my spectacles were knocked off, and I was held by five or six

WOODEND SELF STORAGE (Vic) Pty Ltd



- Store your business documents, stocks or furniture
- 7 day access
- 33 individual sheds
- Affordable prices
- Insurance available

For any enquiries
please contact
Leonie or Dennis Barker
on **5427 4175**

- ⦿ Remedial Massage
- ⦿ SLM Bodywork
- ⦿ Craniosacral Therapy
- ⦿ Energy Healing
- ⦿ Raindrop Technique
- ⦿ Exercise & Dietary Info
- ⦿ Essential Oils



**Sha-le'
ENERGY**

Holistic Facilitator: Lynda Rooth at
"The Gallery" 42 Anslow St Woodend (Behind Colenso)
Appointments Tuesday & Wednesday 0408 175 751



24sevenalarms.com.au

24 Seven Alarms Aust Pty Ltd

- Alarms installed, Serviced and Monitored
- Data cabling and phone line installation
- Medical Alert Systems
- Access Control Systems PSBL: 732-083-90s
- Digital Video Surveillance CCTV packages: domestic and commercial

1800 247 111/ 03 5427 4411
sales@24sevenalarms.com.au

**AS ALWAYS THERE ARE
EXCITING NEW TITLES ARRIVING
THIS MONTH AT NEW LEAVES**

Discover new treats daily

- Check out our extended Djeco kids craft & games range
- Be delighted by our new range of tea light lanterns
- Or browse the August new releases.

Cnr Anslow & Collier Streets, Woodend
5427 3772 Closed Mondays

new
leaves



read & wonder

people. During the struggle I was conscious that I received five or six blows. As soon as Mr Shires offered to give the crowd £10 they left me alone. After this offer of £10 was accepted they allowed me to go down to the hotel in peace. After we arrived there, although I heard one or two threats, we were not in any way molested.

Cross examined by senior constable Walters – *The only time during the whole evening that I saw a policeman was when we were about to leave the hotel at midnight in Mr Shire's buggy. A constable saw us into the buggy, but I cannot recognise him. I do not know where the police were when we were being chased. It did not occur to me to send for the police to release us from the back room of the hall, but had the police done their duty, they would have released us without our having to send for them. The constables might not have been able to keep the peoples mouths shut at the meeting, but at any rate they could have prevented the throwing of eggs and other missives.* John Woodward and Albert Thallon gave evidence as to the disturbance in the hall during the lecture and the misconduct of the crowd after it.

This closed the case for the complainant.

*Joseph Symes was president of the Australasian Secular Association and Editor of The Liberator, a militant Freethought weekly.

Submitted by Janet Hawkins for W & DHS

Paul Groves
Mobile 0414 928 491

Computer Sales, Repairs & Consulting

Home and Office Networking
Onsite Repairs and Maintenance
New Computer Systems

paul@pcweirdness.com

Sand | Soil | Mulch | Pots | Pavers | Plants
Water features | Fire wood | Wine barrels
Hire Equipment | Synthetic turf | Sleepers

 42 Nursery Road Macedon 3440 Victoria
Email hello@nrgsupplies.com.au
Telephone 03 5426 2400 | Facsimile 03 5426 4972

General open hours Monday–Friday 7.30–5pm,
Saturday–Sunday 9–5pm. Arrangements outside
these hours can be made.

The fencin' fella

- colorbond
- tubular
- timber
- steel picket
- pool

Mini Earthmoving
Kanga Loaders

Attachments include:
rotary hoe, soil leveling bar,
4 in 1 bucket, trenchers,
post hole diggers, tipper

SHAUN BARRON
MOB: 0407 232 900 or 5422 3488 AH

THE BUSINESS PANEL–

A one stop shop advisory service for all your business needs

The Business Panel will have its next session soon in Gisborne during August. Hosted by local business coach, Federico Re, founder of Creative Entrepreneur™, and supported by other successful local industry professionals, sessions are presented in conjunction with the Macedon Ranges Shire Professional Development Program and the Victorian Government's Victoria Small Business Festival

- Do you
- want to expand your business.
 - need help to fix specific business problems – e.g. staff, stock, finance, organisation, time management.
 - need a much more entrepreneurial approach.
 - attract new clients or get more out of existing ones.

The panel provides advice on marketing, accounting, sales, financial management, branding and design, product development, customer relationships, HR, technology, staff training, retail merchandising, web development, market trends, strategic planning ... to name just a few.

You will get direct use in your business advice via first-hand knowledge from local industry experts on key business topics and get to share concerns with other business operators. You're not alone out there!

Session costs are \$55.00 each (cheaper for Group or Early-bird bookings). It's an affordable solution for small businesses to obtain advice and help with business growth from a range of highly qualified professionals.

Book now to take advantage of this great opportunity. Places are limited and go fast so book on line and early for the next sessions. Gisborne 16th August: www.16thaugust-eorg.eventbrite.com or Woodend 12th October: www.12thoctober-eorg.eventbrite.com

Submitted by Robert Pearse

SOLAR DIRECT

- Solar Hot Water
- Grid Interactive Solar Systems
- Stand Alone Power Systems

Ph: 1300 55 77 98
Mobile: 0411 269 489
Lancefield

**Massage
Pilates
Remedial
Rehabilitation**

with Pamela Kell

By appointment
22 Goode Street
Gisborne
5428 1000
0408 093 098

Assisting in the repair and maintenance
of your body



SMOKE SIGNALS
WOODEND CFA
COMMUNITY SAFETY NEWS
www.woodendcfa.org

How Close Are You? We need new members who live close to the Woodend Fire Station.
We are currently looking for new members of the Woodend CFA who live close to the Fire Station in Urquhart Street.

We need members who will be able to respond quickly, and that means that you will be living within a 3 minute drive to the station.

We are particularly in need of people who are able to be on call during the day, as many of our members work or have to spend time out of the area. In fact, around 70% of our calls occur during the daytime.

So, if you live close to the Woodend township, and spend most of your daytime hours in the Woodend area, or are a shift worker, you are exactly who we are looking for right now.

Now is an ideal time to join.

In the cooler winter months we are able to dedicate more time to training than the hotter, more active months. New recruits will quickly start their training for the forthcoming summer. You will receive comprehensive training, including basic fire ground practices, pump operation and fire safety awareness, with safety as our Number One priority.

You will be joining a great team.

The Woodend Fire Brigade has been providing an excellent service, protecting our community for nearly 115 years. Currently there are approximately 60 volunteers and the membership includes people covering a wide range of ages and occupations.

We are indeed an interesting mix: an aged care nurse, air traffic controller, automotive mechanic, bank risk finance manager, builders, business managers, carpenters, computer programmers, contractors, drivers, electricians, engineer, film production technician, fitter and turner, labourer, landscaper, mining engineer, molecular biologist, nurseryman, a perfusionist (heart lung machine operator), pilot, real estate agent, retirees, students, teacher, wood merchant, wood worker ... and more!

For further information contact Captain Mick Christie on 0419 870 601 or 1st Lieutenant Mike Dornau on 0409 093 935. The Woodend CFA is a volunteer emergency service, committed to Creating a Safer Community.

Submitted by 1st Lieutenant Mike Dornau,
Woodend CFA

TRADE & SERVICE DIRECTORY

AIR CONDITIONING

SPLIT SYSTEMS INSTALLATION AND SALES

Efficient heating & cooling
For free quote, phone Dave
DW Air 0407 248 454

CIVIL CELEBRANT



'A creative, inspiring and professional experience.'

LOUISE POTTER
CIVIL MARRIAGE CELEBRANT

TEL: (03) 5427 2280 pino@bigpond.net.au MOB: 0438 302 218

EXCAVATIONS

Cheap'n'Neat Excavations

Bobcat/Excavator/12m Tipper Hlre
Post hole digger
Rubbish removal
Free Quotes
Contact Les 0418 556 634

FENCING

RIDGEY DIDGE RURAL FENCING


Specialising in all types of stock fences
in and around Woodend
Call Simon today for a quote

0427 973 758

"Put up by a farmer who knows what it means to have good fences"

MASSAGE

Woodend Massage & Natural Therapies



Massage Reiki
Bowen Ear Candling
Natalie Taranto Di Hall
0402 534 983 0403 373 751
Please call us to make an appointment
70 High Street Woodend

METAL GATES



BVM METALCRAFT
Ben McKee
OLDWORLD & MODERN STYLE
GATES & FENCING
bvmmetalcraft@hotmail.com
04 222 88 768

PHYSIOTHERAPIST

Kyneton Physiotherapy ROBERT ROUSE

B. App. Sc. (Physio) Member A. Physio. Assoc.
Registered for Comcare, TAC, W/Cover,
Vet. Affairs
NO REFERRAL NECESSARY

74 High St., (Corner New St.,) Kyneton

5422 2290

PSYCHOLOGIST

Sam Luxemburg Registered Psychologist

- Counselling in Woodend & Thornbury (Medicare rebate available)
- Counselling Training
- Myers-Briggs personality testing

Phone: 0428 270 401
www.luxcollege.com.au

STONELAYING & PAVING



Stonemason & Paver
specialising in

- Retaining Walls
- Drystone Walls
- Stone Houses
- Paving
- Over 20 years' experience

Cameron Dunn

Ph (03) 5427 4778 Mob 0429 162 589

TRADE & SERVICE DIRECTORY

ANTENNAS

DIGITAL ANTENNAS

Extra TV outlet cabling
Reception problems solved
NextG Signal Boosting
CCTV and Alarm Systems
Data Networks/PH cabling

TEKWORKZ 0411 155 617
www.tekworkz.com.au

CLEANING



Not enough hours in your day?
Need help managing
your home?

Stephen Farrell
Personal Services

Very reasonable rates
Through out the Macedon Ranges
Phone 0419 526 275



CHIROPRACTOR

Mark Brown
30 years experience

- Muscle realign & stretch techniques
- Gentle spine adjustments
- Elbows, wrists, kness, shoulders
- Headaches, migraines & athsma

Upstairs at Westpac Bank, 75 High St

Phone: 0407 526 403

DRESSMAKER

Beryl's Tailoring

DRESSMAKING, ALTERATIONS,
BRIDAL, EVENING & DAY WEAR,
LADIES AND MEN'S REPAIRS



Beryl Bachelor
QUALIFIED DRESSMAKER, NEWHAM
BY APPOINTMENT ONLY
MON TO FRI 9 - 5

5427 0568 0418 510 179

ELECTRICIAN

**Macedon Ranges
Electrics**

REC 17836

MasterCard
VISA

5422 2182

Split System Air Conditioning
Television/Data/Antenna
All Electrical Installations
Contact Dan McCarthy 041754 2235
31 Redesdale Rd Kyneton

ELECTRICIAN



All types of electrical work
Kyneton, Woodend & surrounding districts
"no job too big or small"

Travis Brown 0400 035 442
P: 5422 2568 F: 5422 6908

FIREWOOD

O'Callaghan Bros

REDGUM FIREWOOD SUPPLIERS
GISBORNE

**SPLIT RED GUM
FIREWOOD**

Excellent Quality Delivered Dirt Free
Ph 7 days 5428 1955 0488 957 090

HOME INTERIORS

Present Well



- KITCHEN, LAUNDRY & BATHROOM CONCEPTS
- COLOUR CONSULTANCY
- LIVING ROOM & BEDROOM DECOR
- PREPARING A HOME FOR SALE

CALL DANIELLE FORMICA
ON 0400 664 231

www.presentwellhomeinteriors.com.au

HOME MAINTENANCE

Home maintenance & landscaping
service including decking,
pergolas, carpentry & painting.

Stuart 0409 150 629
AH 5427 2465

PAINTING

BD CROSBIE PAINTING

Ben T: 5427 2164
M: 0431 205 576

Household & Commercial
Interiors & Exteriors
Painting, Staining & Oiling
Decking, Stairs & Hand Rails
Free Quotes

PAINTING

GEE'S
Painting etc.



Call Steven
0402 079 482

PAINTING

Painting & decorating

Residential & commercial
Rendering
Prompt & professional

Rigoni Painting
Phone 0430 371 001



TAXI SERVICE



Your Local Taxi Service
Bookings: 9310 5422

TREE SERVICES



- tree pruning / removal • stump removal
- tree planting / transplanting • rope & harness climbing
- confined space removal • fully insured

Professional commercial & residential tree maintenance
all work carried out by qualified arborist

Call Anthony 0417 059 969

TRENCHING

ASHBY'S TRENCHING

- Drainage & storm water
- Site levelling
- Cable and pipe laying
- Fencing

Phone Mark 0427 973 360

SPORTS NEWS

Cricket is not far away!

The Woodend Cricket Club is gearing up for the 2011-12 season. We've begun advertising for a Senior coach, in line with our determination to get the best coach for our newly promoted WCC First XI to be competitive in the McIntyre Cup, and also for upcoming younger players at WCC to be mentored, to provide us with a base for future success.

Along with the advertisement for a senior coach we also need coaches for the 6 junior sides that the WCC will field, in hopefully a full season of cricket for the juniors. The WCC would like the holders of the coaching positions to be registered coaches in line with the bylaws of the GDJCA. WCC will subsidise those who undertake the commitment to mentor junior cricketers. Along with coaches we need a manager/scorer to undertake the administrative duties for each team to ensure all scores and teams are updated via the MyCricket website.

A Co-ordinator for the MILO program is also required to start at the end of November. All Applications for Junior Coaching, managerial positions and the MILO Co-ordinator should be sent to Jamie Walker at WCC PO Box 326, Woodend 3442 or to walkdale@bigpond.com .

Girls Cricket

A Girls team will be playing this year - girls interested in playing should contact Leanne Hume at olposs_62@bigpond.com to register their interest. Playing



opportunities will not be restricted to GDJCA games- but will also be expanded to playing games against other teams in the Central Highlands region.

Fees

This year fees are \$180 for full senior membership, \$120 for Student Concession and \$90 for juniors. A per game

membership will also apply for seniors who wish to play in the One-Day competition, set at \$10. Multiple junior sibling membership discounts will apply, at \$10 per each additional membership.

Season Launch

The season will launch on the 26th August at 7pm at the Victoria Hotel Woodend with memberships accepted on the night. Another registration day along with an equipment swap will take place on the 25th September. Memberships paid in full prior to the season starting, attract a discount. All new members will receive a playing shirt and if paid in full prior to the season starting, a social shirt.

Looking forward to a full season for 2011-12 and rain only on Mondays and overnight!!

Jamie Walker, on behalf of the WCC Committee.

More sports news on pages 20 and 26.

4 weeks to a fitter you!

Give your health and fitness an overhaul with a personalised 4 Weeks to Fitness Package for just \$99

To secure your package contact us today.
Contours Gisborne P: 5428 2519
28B Aitken Street Gisborne

* Terms and Conditions apply. Offer valid until 31/8/2011

contours.net.au



Contours

Fitness for women on the go.