

THE NEW WOODEND STAR



Circulation of 3190 throughout
Woodend postal district, Newham, Hesket, Ashbourne,
North Woodend, Hanging Rock, Carlsruhe, Cobaw.

AN INITIATIVE OF THE ROTARY CLUB OF WOODEND

May 2011

A Monthly Community Periodical

First Publication 1997

Volume Fifteen No 4

All aboard HMS Pinafore!

Presented by the Kyneton Theatre Company

Theatre buffs will be treated to a riotous musical when Kyneton Theatre Company presents Gilbert and Sullivan's *HMS Pinafore* this month.

HMS Pinafore or "*The Lass Who Loved a Sailor*" is a much-loved comic opera in two acts, full of infectious songs and great humour.

KTC artistic director Peter Kelly says audiences can expect a terrific night of theatre. "*We have assembled a great cast,*" he said. "*The singing, the orchestra, the comedy are all extremely good in this production and everyone who comes to see it will have a thoroughly enjoyable night.*"

Mr Kelly said *HMS Pinafore* had certainly stood the test of time and remained one of Gilbert and Sullivan's most popular shows.

"It opened at the Opera Comique in London, England, on May 25, 1878 and ran for 571 performances, which was the second-longest run of any musical theatre piece up to that time."

The storyline follows the tale of the Captain's daughter, Josephine, and her love for the lower class sailor, Ralph Rackstraw. As a lady of stature, Josephine has been betrothed to the bumbling, much older nit wit, Sir Joseph Porter, First Lord of the Admiralty. Against her father's wishes, Josephine declares her love for Ralph and they plan to elope during the night. However, an astonishing disclosure towards the end of the story leads to a surprise ending.



HMS Pinafore stars Tony Morton, Sarah Green, Tim Francis, Maggie Mottram, Andrew Zylinski, Pam Lenders and Philip McConnon. The show is directed by Fran Kelly, with musical direction by Peter Weerts, choreography by Melanie Burlack and costumes by Sheryl Neill.

Mr Kelly said the highlight of the show was a classic scene/song involving Sir Joseph Porter, the Captain and Josephine in the second act. "*It usually gets about three encores and I am sure this one will too - it's extremely good.*"

HMS Pinafore opens at the Bluestone Theatre, Hutton Street, Kyneton, on April 29 and runs until May 21.

Tickets are now on sale - \$20 adult, \$15 concession, \$12 groups of 10 or more - at InstrAmental Music Shop, 33 High Street, Kyneton on 5422 0831.

A gala night will be held on Saturday, May 21 and tickets are \$25 adult, \$20 concession - includes champagne and supper with the cast and crew.

submitted by Jeff Jones

Woodend CFA fundraiser breakfast

When the CFA beeper goes off at 3am, there's no rolling over and going back to sleep! Not for our hard working and brave CFA volunteers – they're out there protecting our community regardless of the time, the weather and the circumstances.

And not just the local community either. The Woodend Brigade sent a strike team to the north of our state during the recent flood crisis and during the devastating Black Saturday fires, Woodend joined other brigades on the front line, always willing to lend a hand wherever needed.

Well now the Woodend CFA needs YOUR help!

Help to purchase vital equipment - a new truck, GPS equipment, hose winders, helmet mounted torches, protective clothing – all items that are absolutely necessary to fight fire effectively. All items that cost money.

Come along to our Woodend CFA breakfast on Saturday May 14th and offer your support to your local brigade. Enjoy a glass of bubbly and a delicious array of hot and cold breakfast dishes. Hear CFA members talk about their experiences and bid for something special at the silent auction. Show your support for the men and women who protect your family and your property.

The event is at Jackson Hall, Braemar College, Mt Macedon Rd, Woodend. on Saturday May 14th, 9am – 11.30am, Tickets cost \$45, available from Zappa Do, High St, Woodend. Or phone Libby: 0417 391901. All proceeds go to Woodend CFA. Numbers are strictly limited so book now to avoid disappointment!

submitted by Sue Yardley





New Members

The Rotary Club of Woodend

Put something back into this great community and be part of a worldwide organisation that helps build goodwill and peace allowing ordinary people to achieve extraordinary things and bring about exceptional change in the world.

Contact Brendan 5422 6442

The New Woodend Star

An initiative of the Rotary Club of Woodend Inc.
The Bank, 75 High Street, Woodend, Vic. 3442
ABN 32 685 225 161 No. A0021518E

Layout & printing by Collier Office & Business Assist
EMAIL articles preferred: sales@collieroffice.com.au

Circulation: 3190 copies throughout Woodend and district.

Disclaimer: Articles and comments published in this newspaper are the result of contributions from local groups and relevant news articles pertinent to the Woodend district. Neither the Rotary Club of Woodend Inc., The New Woodend Star nor the editorial team are liable for any mistakes, omissions, or misprints. It prints and makes no representation as to the truth or accuracy of any description, and accepts no liability for any loss suffered by any person who relies on any statement contained herein. The opinions expressed are not necessarily those of the editorial team. The committee reserves the right to omit, reject, cut, alter or otherwise re-work submitted articles to make them suitable.

Committee: Barry Napthine, Ivor Johnson, Claudia Green, Brendan Watters, Alexia Downie, Sue Macklin & Jane Watters

Closing date for inclusion of articles or advertising for each issue is the 15th of the month prior to publication

Information for advertisers

All rates include GST & are priced per month. Prices for advertising 2011

Business card (55mm x 90mm)\$49 inc GST
Trade Page\$35 inc GST
Quarter page (90mm x 134mm)\$100 inc GST
Half page (134mm x 190mm).....\$185 inc GST
Full page (190mm x 277mm)\$315 inc GST
Insert (of your printed brochure)\$230 inc GST

Advertisers: Please note – it is in your interest to book and pay for a year in advance, as a 10% discount applies to any full year pre-paid booking. Any existing pre-paid ads will revert to the new rate on completion of the pre-paid period.

Advertising bookings to be made with Alexia Downie on 5427 3092 or sales@collieroffice.com.au. Accounts queries can be made to Sue on 5427 4089 during office hours or nws@johnsonwoodend.com.au Mail should be directed to: New Woodend Star, C/- The Bank, 75 High Street, Woodend 3442.

Woodend Star Publication Dates for 2011

June	May 30 ^e	September	August 29 th
July	June 27 th	October	October 3 rd
August	August 1 st	November	October 24 th
	December	November	November 28 th

Changes to advertisements, new advertisements or cancellations must all be made by email or in writing. All advertisements will be placed and charged for until notified otherwise.

SUBSCRIBE TO THE NEW WOODEND STAR

Do you live outside the New Woodend Star distribution area? Be sure to receive your copy every month by subscribing. A yearly subscription of 11 issues is just \$31.90. Post to New Woodend Star, C/- The Bank, 75 High Street, Woodend 3442.

Name: _____

Address: _____

Phone: _____

Enclosed: Cheque/Money Order for \$31.90

Woodend warms up for winter

Book now or be left in the cold!

The Woodend Winter Arts Festival program and bookings are open. With more than 30 events there is something to suit all tastes – including free events and events for children.



This year the Festival added a schools program, with local secondary and primary schools welcoming acclaimed writers for teenagers and participating in poetry workshops with a high energy performance poet.

Oscar winner Shaun Tan comes to Woodend for a discussion about and screening of ‘The Lost Thing’; plus an extraordinary diverse program including a 1926 Faust silent movie (with piano accompaniment), Mozart’s Requiem, jazz, mezzo soprano and literary panels including Lindsay Tanner, Jacqueline Kent and Mary Delahunty.

The 2011 artistic theme commemorates the bi-centenary of Franz Liszt’s birth with a rare recital of Liszt songs, and a piano recital, featuring Liszt’s greatest work, the Sonata in B minor, based on the Faust legend. A most exciting event is the rare performance of Stravinsky’s The Soldier’s Tale (1918) – a story which parallels the Faust legend.

The literary program reflects the Faustian influence, embodied through a framework of political biography and political speech writing, emphasising the essentially pragmatic nature of politics and policy-making.

Now a Woodend community winter highlight – the

Bradley's

Curtains + Blinds showroom now open

Mon to Fri 9 - 5.30 + Sat 10 - 1



t 5427 2361 fx 5427 1019 72 High Street, Woodend VIC 3442

www.bradleyscurtains.com

Festival will open with fireworks at Buffalo Stadium Oval at 6.30pm - followed by a special opening night cabaret / dinner performance by the ever-popular Joe Chindamo Jazz Trio at the Bentinck. Information and bookings: www.woodendwinterartsfestival.org.au

submitted by WWAFF committee

Massage Pilates Remedial Rehabilitation

with Pamela Kell

By appointment
22 Goode Street
Gisborne
5428 1000
0408 093 098

Assisting in the repair and maintenance
of your body

WOODEND
Proud to be Pokie-free

MACEDON RANGES SELF STORAGE

- * 7 day access
- * Individual units
- * Affordable prices
- * Insurance available
- * **Now Fully Alarmed**

- Store your:
- * Cars
- * Boats
- * Business documents
- * Furniture etc.

Lot 3, Hoyle Court, Kyneton
(Off Beauchamp St)

5422 1898
5422 3488

Woodend Rainfall Report 2011

Each month we add the rainfall details and the year to date total. Our rainfall report shows, **2005, 2006 2007 2008 2009 and 2010** comparisons. Please note that your own rainfall readings may not exactly match these.

	2006	2007	2008	2009	2010	2011	
January	49.8	83.5	17.1	0.08*	54*	227.5	Jan
February	53.1	27.4	22.1	2.5*	71.5*	115.0	Feb
March	20.6	35.7	25.4	42.5*	121*	35	Mar
April	46.4	20.2	20.4	51*	45		April
May	58.8	95.7	43.7	30.5*	39		May
June	36.0	105.1	88.7	66.5*	98.5		June
July	91.6	83.3	112.5	76.5*	87.5		July
August	30.8	34.8	52.2	107.5*	148.5		Aug
Sept	50.6	49.8	42.0*	88.5*	97		Sept
Oct	5.2	12.1	13.0*	46*	154.5		Oct
Nov	13.0	91.0	67.2	99*	193		Nov
Dec	31.0	101.2	96.0*	60*	93		Dec
YTD:	486.9	739.8	600.3	670.5	1202.5	387.5	YTD

Figures for 2008, 2009 & 2010 include information from a different location indicated by *.

For the year of **2010** there was rainfall of
1202.5mm

1 inch = 25.4 mm therefore the total year 2010 is 47.34 inches

Japan disaster relief

Community fundraiser- Origami workshop

In response to the recent tragedies in Japan, a fund-raiser called 'Origami Aid' was established; aiming to raise money on behalf of the Red Cross's efforts in Japan. There is a Japanese tradition in which you assemble 1000 origami cranes and dedicate them to a particular cause or prayer. Similarly, this fundraiser will attempt to raise \$1000 through selling 1000 origami cranes.

In addition, a workshop at the Neighbourhood House is being held to educate people on how to make origami cranes. A great opportunity to exchange culture and learn something new; you can help support the Red Cross's efforts in helping to restore a devastated Japan.

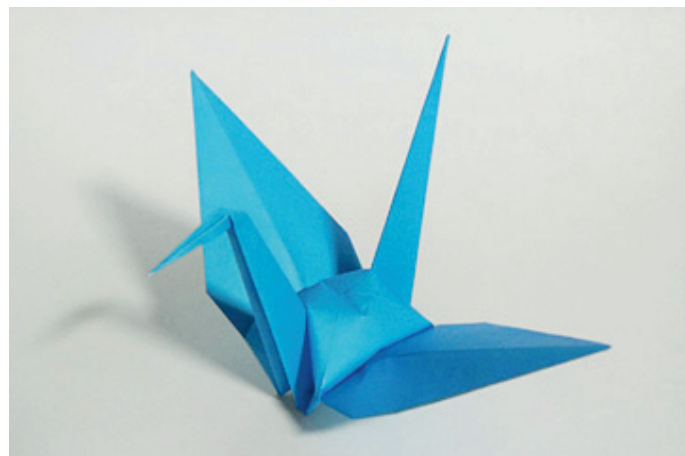
When: Thursday 19 May 2011 from 10 to 11am.

Cost: \$10 including Origami papers and tea/coffee with all proceeds going towards the Japan and Pacific Disaster Appeal 2011.

An Origami Crane is also available to purchase for \$1 at Woodend Neighbourhood House.

Please contact Woodend Neighbourhood House for booking on 5427 1845.

Submitted by Tamoko Suzuki



Australia's Biggest Morning Tea

With a 60's Twist!

Woodend Neighbourhood House is hosting a fundraising morning tea for the Cancer Council.



We are running a 60's themed morning tea, as part of the Cancer Council's Australia's Biggest Morning Tea. The morning will include 60's Music Trivia and a competition for the best non-commercial decorated cup cake, sponsored and judged by Bourkies Bakehouse. So grab your friends and treat yourselves to our entertaining and delicious morning tea.

Entry is a \$10 donation to Cancer Council for morning tea. Hosted on Monday 30 May 2011 10:00 - 11:30am at Woodend Neighbourhood House, 47 Forest Street, Woodend.

For bookings please contact Woodend Neighbourhood House on 5427 1845 or reception@wnci.com.au.

Submitted by S. Campbell, Woodend Neighbourhood House

Daylesford Macedon Produce Harvest Week Festival

May 13-22

The festival is a celebration and showcase of the region's growers, provedores, chefs, restaurateurs and vigneron. The festival seeks to promote Daylesford and the Macedon Ranges as one of Australia's premier Food and Wine Destinations.

The festival will include a huge array of activities:

- Twenty regional tasting plates and their matched local wines available to visitors across the region- providing a tour with a difference and a snapshot of the best regional produce at each stop. This was one of the most hotly contested and popular events of the 2010 festival;
- Open farm gates and cellar doors throughout the region with hands on participation and activity for visitors;
- Additional local farmers markets to be run during the festival;
- Forums on sustainable agriculture;
- Special winemaker and chef's dinners;
- Classes in cooking, composting, preserving, wine blending and bread making;
- Visiting key speakers;
- The festival targets a wide audience including families;
- Children's activities include hands on workshops, farm visits and the Harvest Week Junior Chef of the Year Competition.



Junior Chef of the Year

The competition is for children 12 and under. Children are encouraged to produce a dish using local

potatoes that will be judged by Gary Thomas (Spade to Blade) and Jo Richardson (KitchenAid) at the Daylesford Primary School (kitchen) on Saturday 21st May at 11.30am.

This region, with its mineral rich volcanic soil, is one of Victoria's premier potato growing areas. There are at least 30 varieties of potatoes grown here. Make cooking fun and get your kids using fresh healthy food and help them to create a dish for the Harvest Week Junior Chef of the Year Competition that showcases the local potato. It can be any dish that you want to create that centres around the humble tasty spud. For more information and entry details, please view the website www.dmproduce.com.au

Submitted by Simone Gordon

Woodend Girl Guides

Information Session

Attention girls aged seven to 11 years! Are you interested in joining Girl Guides?

If you would like to know more about Guiding and the possible establishment of a new Unit in Woodend please come to an Information Session at 4.30 pm on Thursday the 5th of May at the Scout and Guide Hall, 41 Forest Street (behind the log cabin), Woodend. Mums and daughters welcome. To RSVP or for more information please phone 0487 800 050.

Being a Girl Guide is Lots of Fun and a Great Way of Making Friends

As a Guide you are a member of an organisation with over 10 million members and you can be involved in a wide range of exciting activities, from outdoor challenges and camping, learning new skills, to community action projects and international travel. But there's more to being a Guide than just having a good time. Guiding provides opportunities for you to:

- Be challenged by new experiences.
- Think for yourself and make decisions.
- Undertake teamwork and acquire leadership skills.
- Develop self-awareness, self-respect and self-confidence.
- Develop personal values.
- Do your best.
- Contribute to society.

Being a Guide is all about learning new skills, making new friends and helping others. You will be encouraged to achieve your own personal goals through a flexible program with support from your Leader. You will also have the opportunity to work for a wide variety of badges and perhaps gain a Peak achievement award. For more information visit www.guidesvic.org.au.

Submitted by Monica Bensberg

BEAUTY IN TOUCH

Classical Beauty Therapist – Kerry Robinson

- Deep Cleansing Facials ▪
- Waxing ▪ Manicures ▪ Pedicures ▪
- Eyelash tinting ▪

Please call 0412 479 901 for an appointment
40A South Road, Woodend



Financial services you can trust

Bob Nixon - Authorised Representative,
Total Financial Solutions Australia Ltd

ABN 94 003 771 579 AFSL No.224954

PH: 5428 0123

www.nixonfinancialservices.com.au

Total Financial Solutions



committed to your success



We deliver to your home the

freshest, best quality, certified organic fruit & vegetables available & guarantee this 100%

Pick from a range of pre-selected boxes or select your own order from our weekly availability list

Phone: **0409 386 875**
or **5429 1156**

email: vivien@netcon.net.au

www.vivsorganics.com.au

feeling **FRAMED**

bringing art to life

Custom picture, artwork, tapestry and memorabilia framing, professionally and economically performed in-house.

A comprehensive range of Art supplies at very competitive prices.

- Pencil & paint by numbers sets for youngsters
- Artist's quality brush and paint sets for the more experienced.
- Matt boards and mounts for artwork presentation.
- Books & magazines for the art enthusiast, or those just wanting a good read.

43 Anslow Street, Woodend – 5427 4455
Next to the post boxes
feelingframed@bigpond.com

END OF FINANCIAL YEAR IS FAST APPROACHING!

Individuals, Trusts, Companies, Partnerships and Superannuation Funds can all manage their tax through effective planning.

Significant benefits may be achieved by simply managing the timing of transactions.

Our friendly and qualified staff can assist you with:

- Review of interim accounts
- Review of entities and structure
- Managing deductible business expenditure
- Small business and Capital Gains Tax (CGT) concessions
- Capital Gains Tax (CGT) management
- Review of loan accounts (especially those to shareholders of a company)
- Managing eligible superannuation contributions
- Negative gearing impacts on Government assistance/benefits
- Determine eligibility for rebates and offsets

If you would like to discuss the above or your individual circumstances further please contact Andrew Marshall or Janine Orpwood on 5427 3790 for an initial consultation.

Langley McKimmie Chartered Accountants

85 High Street Woodend

www.langleymckimmie.com.au

info@langleymckimmie.com.au

Career Opportunities



**Chartered
Accountants**

If you would like to discuss a career with
Langley McKimmie, please call or email us.

Fall Of The Roman Umpire & Edvardo the Performing Waiter

Macedon Ranges Shire presents the *Cafe Culture* Series which comprises of live theatre experiences that have been specially selected to entertain, inspire and delight audiences

Fall Of The Roman Umpire

While it may have nothing to do with sport, don't miss your chance to catch Dennis Coard's hilarious autobiographical one-man show *The Fall of the Roman Umpire* when he performs in Woodend's Community Centre. In his witty and poignant play (which has also been described as "charming and cheeky"), join Dennis - and members of his family – as he recounts memories of a childhood in Ireland and emigration to Australia, his young adulthood as a Telstra technician and the "throwing away of a good career" to go to drama school at the age of 35.

Adopting the roles of people in his life, *The Fall of the Roman Umpire* will keep you intrigued, enthralled and in mirth as Dennis takes you through the past 20 years of his life, punctuated with immaculate comic timing.

Graduating with a Diploma in Dramatic Art in 1988, Dennis' acting career has included television, film and theatre, including six years as Michael Ross on the popular television series Home and Away between 1991 to 1996.

Edvardo, The Performing Waiter

Edvardo is a performing waiter. Sometimes comic. Sometimes serious. Always fun. With warmth, humour and his unique talent for spontaneous song, Edvardo is full of delightful surprises.

Comments and stories from the audience are playfully woven into song. For those who love to dance, the accordion is full of compelling rhythms that include;

The Tango, The Tarantalla, The Can Can, and Waltzes.

His extensive repertoire includes some of the World's greatest love songs, well known classical themes and popular tunes. Its Now or Never, Santa Lucia, Wooden Heart, That's Amore, Those were the Days and Smoke on the Water are but a few of his many musical treats.

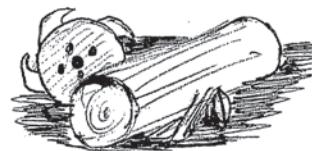
Edvardo ! is performed by Malcolm Hansford, a Melbourne based actor/musician who also works with the Howdy Cowdies (comic musical duet) and Living Stories (Playback Theatre ensemble).

Friday 13th of May 8.00pm at the Woodend Community Centre. Tickets \$20 for Show Package \$15 General Admission Bookings 1300 88 88 02 or online www.takeapeek.com.au or any customer service centres (Kyneton, Woodend, Gisborne & Romsey)

Submitted by Macedon Ranges Shire Council

MADDEN'S PORTABLE SAWMILLING SERVICES & SALES

Turn your unwanted
trees & logs into
VALUABLE TIMBER



Call Craig on 0410 275 714

Mayor's Message

Plans to upgrade facilities at Romsey Park and sports precinct are moving along, with the project and design plans for the new sports oval and car park at the Primary School almost complete.

We are still negotiating funding arrangements for the promised \$3.3m grant from the Federal Government to develop the Romsey Park Sports Precinct and hope that these arrangements will be finalised soon.

The upgrade is the greatest improvement to sporting facilities in the East of the shire in decades and the importance of this project to the local community cannot be overstated.

These new facilities will benefit all ages, especially our children, and will be enjoyed for generations to come.

Once Council has control of the project we will work with the community to have these facilities upgraded as a priority.

Prepare Your Properties Now for Winter

It's important that you prepare your properties now for winter to ensure your safety and also to reduce the risk of damage to your home and surrounding properties in the event of storms and extreme weather.

Simple things like clearing debris from gutters and drains and ensuring items around the house like outdoor furniture and children's play equipment are secured can help protect you, your family and your property when impacted by storms or flash flooding.

The SES has developed an online tool kit that is available at www.ses.vic.gov.au to assist you in preparing your property and it also provides important information about what you can do in the lead up to, during and after a storm.

What's On

During May, the 2011 Café Culture Series will host two live performances in Kyneton and Woodend, ranging from comedy to musical theatre.

On Friday 13 May, Best of Broadway will be held at the Kyneton Town Hall from 11.30am-12.45pm and will feature music from shows such as Cabaret, Chorus Lin, Fiddler on the Roof, plus much more.

Later that evening, The Fall of the Roman Empire & Edvardo, The Performing Waiter show will be held at the Woodend Community Centre at 8pm.

Tickets for both shows can be purchased online, just log-on to www.mrsc.vic.gov.au or by calling 1300 88 88 02.

Mayor, Henry McLaughlin

Macedon Ranges Shire Council



WOODEND SELF STORAGE (Vic) Pty Ltd



- Store your business documents, stocks or furniture
- 7 day access
- 33 individual sheds
- Affordable prices
- Insurance available

For any enquiries
please contact

Leonie or Dennis Barker
on 5427 4175



Accountants, Advisors & Planners

Office Locations:

111 High Street, Woodend

Ph: 03 5427 8000

2/19 Bourke Street, Kilmore

Ph: 03 5782 1273

email: admin@riverwoodgroup.com.au

website: www.riverwoodgroup.com.au

Riverwood Group can offer a *Total Financial Solutions* package for you and your family. Take a look at some of the services we provide:

Taxation

All your taxation requirements to suit individuals and small businesses.

Investments to Create & Protect your Wealth

Managed Funds, Indexed Funds, margin Lending and more

Planning for Retirement

Allocated Pensions, Centrelink Benefits and Payments

Stockbroking

Recommended lists, broking facility available, share updates

Superannuation & Rollovers

Advice, placements, Self-Managed Super Funds and Eligible Termination Payment Advice

Other Services

Home & Investment Loans, Business Loans and Leasing, Income Protection, Life Insurance, Professional Indemnity, Estate Planning and more.

Tylden Primary School Fair and Tractor Pull

May 7 2011

It's time again for the Tylden Primary School Fair and Tractor Pull.

Every year on the day before Mothers Day Tylden Primary P.S. holds its fair which manages to cater to just about everyone. From a great Mothers Day gift stall to silent auction hampers, rides that cater for big and little kids, a tractor pulling competition, vintage car display, brass bands, trash and treasure, food and more.

"For a school of 110 students Tylden sure does know how to put on a fair," said new Principal Lee MacDonald who experienced her first Tylden fair while acting in the job last year.

"I think a fair says a lot about a school and the Tylden school community really pulls together to provide a terrific fair," she said.

Fair highlights include:

- Pre-purchase wristbands for unlimited rides on the giant slide, bungee run racetrack, bungee trampolines, giant adventure castle, petrol powered jeeps, small jumping castle and trackless train. Discounted wristbands available for pre-purchase from the school for \$25 or \$15 for under fours.
- Large home grown, home baked and homemade stalls.
- Competition for the Mike Kilgariff Shield for best original tractor.

"We also have our brand new school building to show off this year which will display student artworks and host Devonshire teas on the day.

"Tylden primary is lucky to have the space for such a diverse fair as this, with the adjacent oval and great new buildings to complement the existing lay out.

"We are especially grateful to our sponsors because their financial support makes a big difference to the funds raised for our school," Ms MacDonald said.

The fair opens at 10 am and will close around 3 pm. For fair details contact the fair coordinator Paul White on 0412 566553 or the school (after the holidays) on 5424 8244.

Submitted by Andrea Tanner



Harvest Festival A Big Hit

Newham notched up another highly successful community event, when the inaugural Harvest Festival was held in the town on Saturday April 9.

The free event attracted over 500 people including many from outside the district. They were treated to a range of hands on workshops covering everything from bread-making to brewing beer.

The festival was officially opened by ABC TV's Gardening Australia Host, Stephen Ryan. He paid tribute to the many volunteers who worked hard to make the day a success. He said it was heartening to see communities like Newham working together towards a more sustainable and enjoyable lifestyle.

A new community orchard and a large mosaic signposting it, were unveiled as part of the opening ceremony. Stephen then conducted a highly informative gardening question and answer session before the rest of the day's proceedings got under way.

As well as hands-on workshops there was an emphasis on family activities and one of the most popular sessions was pasta making for kids. Many children discovered how pasta was made and then had the satisfaction of eating the product they had made. Another very popular session for the young was 'keeping backyard chooks' where children were able to handle poultry for the first time.

Those attending were able to sample a range of fresh products including freshly brewed beer, local wine and cheese and a product relatively new to the region – truffles.

Members of the organizing committee were very pleased with the attendance and noted that the day would not have run as smoothly as it did without the army of volunteers who helped out. We are very grateful for their time and support.

We also thank the Newham Landcare Group, the Primary School and the Mechanic's Institute for supporting the festival as well as Councillors Henry McLaughlin, Joe Morabito and Joan Donovan for their financial support of the event.

A special mention must go to 3FISH company for supplying the festival bags and giveaways.

Submitted by Fran Spain Harvest Festival Committee



"for all your water needs"

The Water Bloke Specialises in

- Rainwater Tank Installations
- Tank To Toilet connections
- Grey Water Recycling

We're based in Woodend, so call us for a free consultation and Water Audit of your home.

Contact Craig on 0410 275 714
thewaterbloke@gmail.com

Eating Out, In & Around Woodend



The Village Larder

**Now Open 7 Days
8am - 4pm!**

81 High St, Woodend

Phone 5427 3399

info@thevillagelarder.com.au

www.thevillagelarder.com.au

Specialising in;
Gluten Free Cakes
Petite Fours (great for functions)
Cakes for all occasions
Wholesale cakes for Cafes & Restaurants

Pie'ce De Resistance

Joe and John Tullio www.mrcakes.com.au
74 East Street Woodend 5427 3960

CAMPASPE  HOUSE
A COUNTRY HOUSE HOTEL & RESTAURANT

TREAT YOUR MUM THIS MOTHER'S DAY
Saturday 7 May - Traditional High Tea \$30 per person
OR

Sunday 8 May - enjoy a complimentary welcome drink
& 2 course meal \$49 per person

See our website for more information, reservations essential

GOLDIES LANE WOODEND 03 5427 2273
reservations@campaspehouse.com.au www.campaspehouse.com.au

TRISH and CRAIG invite you to

dinner

@


the baytree
coffee shop

Exciting dinner menu

Friday and Saturday Nights

Dinner from 6:00pm onwards

119A Main Street
Romsey
03 5429 6340

Wed, Thurs & Sun 8:30am to 4:30pm
Fri & Sat 8:30am 'til late

Fully Licensed
Bookings Welcome

Eating Out, In & Around Woodend

* FAB FOOD
 * FUNCTIONS & CATERING
 BY ARRANGEMENT
 Bookings Essential
 BYO wine only
 Light Snacks Mondays
 Free entry for
 Macedon Ranges residents

Tel: 5427 0295

Large range of Australiana Gifts

Hanging Rock Café & Country House

AUBERGE CATERING
 We come to you...day or night

PO BOX 749
 WOODEND 3442
 0408599066
 aubergecatering@yahoo.com



Award winning Bread,
 Pies & Cakes

Shop 1 & 2, 115 High St, Woodend
 Open daily from 7am
 54272486

www.bourkies.com.au

SEASONS
 present

Sunday Arvo Sessions

Sunday, 22nd May



Dave Prior

He will have
 you in stitches
 with his family
 friendly humour
 and hilarious
 songs.



Crakajak

From the very first
 chord till the final
 encore you will be
 captivated by the
 energy, charm and
 musicianship of this
 great Aussie band.

Come and enjoy a
 pleasant Sunday
 afternoon of comedy
 and good time acoustic
 country/roots music
 and be entertained by
 two of Australia's most
 loved acts.

Show starts 3pm. Lunch available 12—2:30. Tickets \$25 or
 \$20 if dining beforehand. Fully licensed. Bar snacks available
 during show. Bookings essential, call 5428 7501.

www.seasonsrestaurant.com.au
 bistro bar & deli
 4 station st riddells creek

5428 7501



Frank & Rose Gorlitz

Open 7 Days
 8am till late

For Bookings breakfast, lunch & dinner

Ph/Fax 5427 4447

Mobile 0488 423 537

"Where Lovers of Food Eat"

HOLGATE'S BAR & RESTAURANT

Microbrewery Hotel with cosy
 open fires, stained glass windows
 and friendly atmosphere. Award
 winning local beer. Delicious
 meals including house-made bread, pasta and desserts.
 Function room and stylish accommodation now available.

Open for Lunch Tues-Sun. Open for Dinner 7 Days

79 High Street, Woodend

Ph 03 5427 2510



Woodend Auxiliary of Kyneton District Health Service

At our April meeting we decided to give funds to the Hospital for the purchase of some items the patients need. These are:

1. The sum of \$1600 for the conversion of television system to digital.
 2. An amount of \$800 to purchase a bookcase for the residents of Thomas Hogan Wing.
- This gift is made possible by the hard work of our volunteers, and of course by the generosity of our Woodend Community.

Our Auxiliary will be sitting in Coles' during the first two weeks of May, selling tickets in our Mother's Day Raffle. There are several great prizes, so please have a dollar or two to spare to help our local hospital.

We're not planning any other activities before June when our meeting will be at 20 Sullivans Road on Thursday June

9th, at 1.30 p.m.

Caroline, or Carol - I really would like to hear from you again, so please call me back!

Anyone else who would like to help would be most welcome - phone me on 5427 1909.

Submitted by Jo Clancy

jigsawstairs@optusnet.com.au
0408 153 124
JIGSAW STAIRCASES
P.O Box 93 Woodend Vic 3442

Eating Out, In & Around Woodend

Zarby's

Wine bar & bistro

Open Wednesday - Saturday
10am till late

84-88 High Street, Woodend P: 5427 4414



Bistro
Open 7 days lunch & Dinner
Daily Blackboard Specials

Bar
Counter meals daily
Fridays Tradesmans Lunch-\$14 pot & parma
TAB & Sky Channel

Specials
*Tuesday Locals Day menu \$17.50
with glass house wine, lunch & dinner.
*Pensioner & Seniors card holder Lunch menu
from \$12.50 Monday to Thursday (Lunch only)

Drive Through Bottle Shop
Open 7 days

Bookings 5427 2721
67 High Street, Woodend
www.vicwoodend.com.au
info@vicwoodend.com.au

Rasputin's

wine bar • restaurant • gallery
Thursday to Sunday
5426 3700
info@rasputinbar.com.au
40 Victoria Street, Macedon



the bentinck

OF WOODEND

UPCOMING EVENTS AT THE BENTINCK!

Friday Night Drinks, Friday 6 May
Relax and unwind in the bar
by the open fire
First Friday of every month
6.00pm—9.00pm
Tapas menu available
No reservations required.

Mother's Day, Sunday 8 May
10.30am Two course set menu
brunch \$45.00pp
1.00pm Three course set menu
lunch \$60.00pp
Availability is strictly limited. Reservations essential.

Woodend Winter Arts Festival Express Dinners
Saturday 11 & Sunday 12 June
Two course set menu express dinner
\$48.00 per person, 6.30pm—7.30pm
Availability is strictly limited. Reservations essential.

8 Carlisle Street, Woodend
p: (03) 5427 2944 w: bentinck.com.au

CONFERENCES WEDDINGS EVENTS

Space is still available in the Eating Out section.
Please contact Alexia on 5427 3092 to advertise your business

ADVANCED
**EQUINE
DENTISTRY**



Dr Shannon Lee BVSc

0418 598 621

we
come to
YOU!

Winner 2009 Macedon Ranges Business
Excellence Awards for Young Business Person &
Professional Services categories

Mobile services for Macedon Ranges

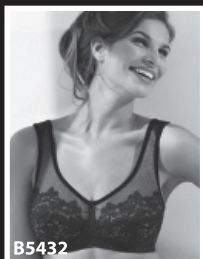
www.advancedequinedentistry.com.au

Kirsty Nuttall

**MACEDON RANGES
PICTURE FRAMING SERVICE**

By appointment only
Phone/Fax: 5427 3511
Mobile: 0417 337 857

**All news items, articles and community
news columns must be received by 15th
of each month.**



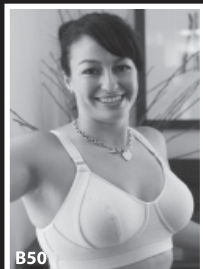
B5432



3Fish Fairtrade
cotton wardrobe
basics



3E709/8

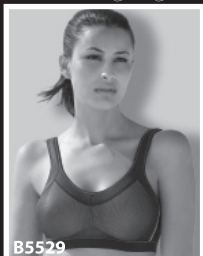


B50

• wire-free bras • all ages • maternity • sports • wardrobe basics •

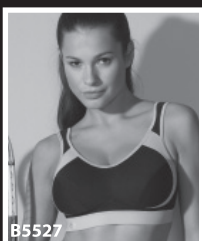


bodywise
UNDERWEAR
comfort for women ... everyday



B5529

Wire-free bras, briefs
& more ... sizes 10 to
30 ... Gift vouchers
available



B5527

www.bodywise.com.au

1300 66 17 66

Fitting appointments essential
Next to new Woodend Post Office

**New State of the art Veterinary
Centre opens in Woodend**

The team at Tony's Practice have just moved into their brand new, purpose built Veterinary Centre.

"The Centre is more than just a veterinary practice", says Dr. Tony Hanegraaf, "it is a destination for all pet and animal owners and we are very proud to offer such a great facility to the people of Woodend and the wider Macedon Ranges."

The Centre boasts the best in animal care for small animals with several large consulting rooms, state of the art surgeries, new digital x-ray equipment, retreat room, cat boarding and animal grooming rooms. The Centre also offers a full equine facility with an 8 stable complex, crush, round yard and trot up track which *"will definitely put Woodend on the map for equine and large animal care"*, says Tony.

With the best in animal care in mind, this cutting edge facility provides enormous benefit to all pet owners and their animals. It offers a holistic approach to veterinary care with an emphasis on providing a total solution for your pet, both during and after the consultation.



The Centre opened for business on Wednesday 27th April and is located on the corner of Wood and Brooke Street, Woodend.

A special Family and Community Open Day will be held on Sunday 22nd of May in order to allow visitors to tour the centre and meet one of Melbourne's greatest and most loved horse racing legends, Sub Zero.

Dr Mel excited about the new technology

Submitted by Tony's Practice, see insert for further information

This newspaper is supported by



Collier Office
and Business Assist

Shop 5, 130 High Street
Woodend
5427 3092

Feeling frustrated by your computer ?

- Complete PC Troubleshooting
- Virus Removal and Protection
- Hardware Repairs
- Custom Built Systems, Hardware and Software
- Basic Computer Training



Trust Colliers for all your home or business Computer and I.T. needs

Playgroup Open Day

Woodend Playgroup, situated in Forest Street, is a self funded organization, where parents and children can meet on a weekly basis. The playgroup has great facilities both indoors and outdoors catering for children aged 0-5. Each week we have a different activity for the children to enjoy.

Come and join us for an afternoon on the 28th May 2-5pm at Playgroup. It will be an opportunity for existing members to bring the rest of the family such as dads and grandparents to show them what we do. We also welcome families who are thinking of joining playgroup and want to come along and see the centre. We will be having face painting for the kids and other fun kid's activities as well as light refreshments.

This month we are looking for volunteers in the community who can offer their time. It may be for storytelling, singing, playing musical instruments, so if you have a skill or talent you can offer, then we are interested in hearing from you. Please be advised you may be asked for a working with children check. If you are able to volunteer, please call Emma on the number below.

We are also interested in starting a Grandparents group to give Grandparents the opportunity to take their Grandchild to Playgroup. If there are enough interested families then it will be possible for us to start a session time. Please contact Emma on the number below if you are interested.

We are always welcoming new members to join us, so if you have just moved to the area, or are wanting to meet more people in our community, then playgroup is the perfect place to meet other families. Our sessions run every day of the week and groups cater for children of similar age. We are also still looking for more 1-2 year olds to start a new group on Tuesdays.

For enrolments and enquiries for any of our groups, please call Emma on 54271867 or 0447621855.

Submitted by Sarah Copland



FAIRHURST CONVEYANCING
and Secretarial Services

For all your
Property Transfers
Ring Sue Fairhurst on
5427 2382
27 Urquhart Street, Woodend
MVCA & AIC

Your Memories to DVD

<ul style="list-style-type: none"> * 8 mm/16 mm Films * Compact VHS 	<ul style="list-style-type: none"> * Mini DV * VHS
---	--

Discount for Quantity



Top Hat Productions
Ph: 5422 3930

WOODEND MOWERS

• sales • hire •
• service • repairs •



DCS7301 73CC ENGINE 20" BAR
RRP \$1262 OUR PRICE \$1099



DCS500 50CC ENGINE 18" BAR
RRP \$872 OUR PRICE \$790



DCS9010 90CC ENGINE 29" Bar
RRP \$1507 OUR PRICE \$1399

Plus \$100 Trade in on any chainsaw any condition until July

Open Monday to Friday 9 am to 5.30 pm
Saturday 9 am to 12 noon

988 Blackforest Drive, Woodend

Ph: 54 273 116

Mob: 041 352 6761

Stocking Australia's best brands



Proudly supporting the
Woodend Children's Community Garden

KNI121164/K

Landcare news

With April giving two weeks of Indian summer before the cloud, drizzle and rain returned, it means the plants; grass and weeds got an extra boost. It's been pretty difficult keeping up with the care at all our plantings. As a matter of fact, it's been impossible!

Are there any more volunteers to help?

We would welcome you with open arms and with tools from the Landcare Trailer ready for you to use.

The group has achieved so much in the local area, and we could really do with some new members to assist at any of our working bees.

The Cycling/Walking track along the Five Mile Creek has been damaged by the flooding rains; in some parts it's unusable, so we have written to Dale Thornton, Director, Infrastructure and Operations, Macedon Ranges Shire Council, asking him to ensure that our very important Track is given suitably high priority.

Our next Sunday working bee will be on May 29th, with the Scouts involved, we hope. We will be clearing and tidying up around the newly planted area between the tennis courts and Jeffrey St.

Quarry/Bawden Roads group

This group is looking for new fields to conquer as they have got most of the heavy stuff in their part of town cleared over the last few years. They've done marvellous work there.

We will very soon have news of a new project which will try to get something similar started along Urquhart St, past the "no through road" section. A couple of brave people have been working there by themselves for some time, and we'd like to think some more of their neighbours would help if they know there's some support from a group.

The Quarry/Bawden Rd group meet every Thursday, so contact Bert for details on noswadb@bt.com

We have another special project that involves the planting of about 16 advanced trees in the area between Pyke St and Bowen St. They are all colourful, attractive, non-indigenous, well-suited to our cold, damp climate, and above all they will not become weeds.

Hoping to see many of you at our next working bees!

Best wishes, Jo Clancy



Grants available for volunteer community organisations

Dear friends

We are very fortunate in the Macedon Ranges to have many fantastic community organisations staffed by highly experienced and passionate volunteers who work tirelessly to serve our community. Volunteers are the backbone of so many of our non-profit organisations and make a real and lasting difference in the lives of so many people in our community.

Grants of up to \$5000 are available from the Victorian Government through the Volunteer Small Grants program to assist these organisations to attract new volunteers, create new volunteering opportunities, and strengthen existing volunteer programs as a way of engaging new volunteers.

Many of our local community organisations who have applied for these grants have been successful in the past and I encourage you to apply. If you are intending to submit an application to this program, please contact my office on 5428 2138 and we can assist with your application and provide a letter of support.

For more information about the program, telephone the Victorian Government's Grants Information Line on 1300 366 356 or visit: www.grants.dpcd.vic.gov.au

Warm regards,

Joanne Duncan MP

State Member for Macedon



May Five on High • Home Self Others

May Five on High would like to thank all of our customers for the huge success of the launch of the newest quality fashion range to hit Woodend.

We would like to announce the latest addition of Yarra Trail to our exclusive labels Boo Radley, Vigorella and Italian Knitwear selection.

Please feel free to pop in and see other beautiful seasonal pieces just arrived!

Come in and experience the exciting new High, at May Five.

Open 7 days, May Five on High, 4/81 High Street Woodend (opposite Clock Tower next to Keatings) ph. 5427 3863.

WARNER'S JEWELLERS
EST. 1912 ~ 4th Generation Jewellers

**Manufacturing Jewellers Watch & Clock Repairs
Jewellery Repairs Valuations & Rethreading**

Beautiful selection of

PANDORA™
Life has its moments ... make them all unforgettable

97 High Street, Woodend

5427 1573

TAYLOR CHIROPRACTIC

NOW OPEN IN WOODEND

Neck Pain

Shoulder Pain

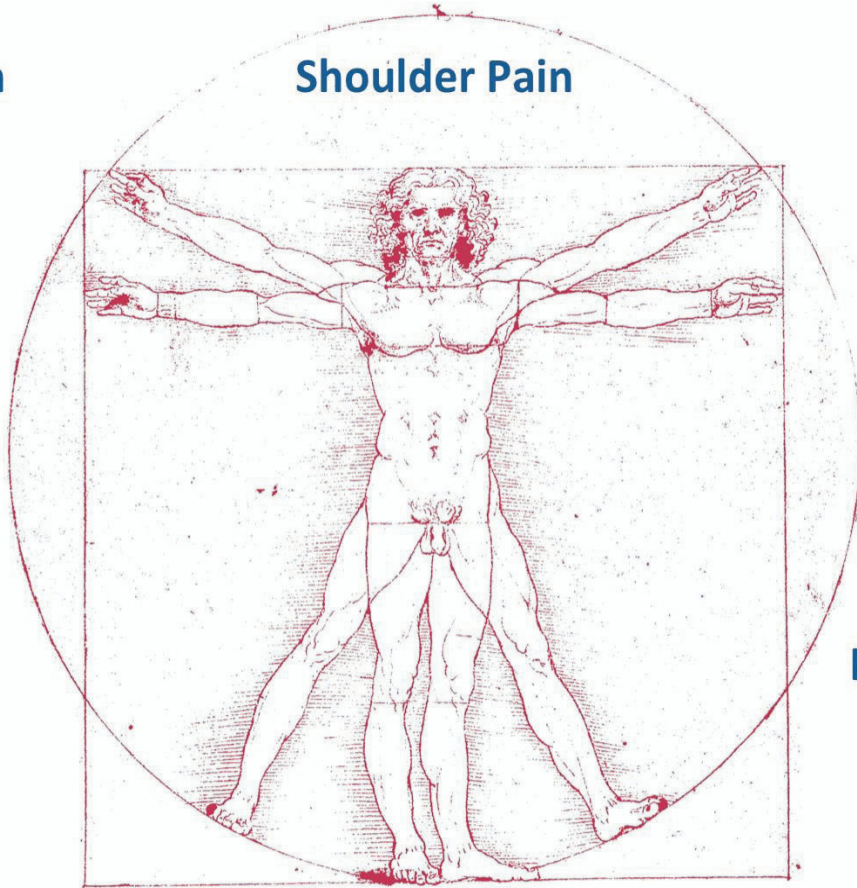
Back Pain

Arthritis

Sciatica

Whiplash

Knee Pain



Tennis Elbow

Headaches

Sports Injuries

NEW PATIENTS \$35.00

\$45.00 Return Visit

LONG CONSULTATIONS

OPEN MON-FRI 9AM TO 6.30PM

CALL 54 723454

SPINAL MANIPULATION - DRY NEEDLING - ACTIVE MYOFASCIAL RELEASE - ACTIVATOR - TRIGENICS - REHAB

Level 1, Room 1, 4 Collier Street Woodend

MORE INFO AT TAYLORCHIROPRACTIC.COM.AU

GARAGE DOORS

ELECTRIC GATES • SOLAR GATES
SELF OPENING GLASS DOORS

Ken Ross

0427 661 543 5422 7507

Central Highlands Doors & Gates

Serving Kyneton & Woodend

Cancer and Natural Therapy Foundation

– *What's on in May, 2011*

The Cancer and Natural Therapy Foundation is a non-profit, registered charity organisation aimed at assisting people in accessing information and resources in the area of natural therapies and expanding health care options. To enable them to make 'informed choices.' The Foundation offers a holistic and integrative approach to health care and well being, respecting peoples' right of choice.

The Foundation provides the following services and resources: information and referral, resource library, professional counselling, guest speaker program, support groups, reiki healing, ifas treatment, ear candling, quarterly newsletter, self help workshops and educational films.

Weekly Support Groups:

- Health Awareness Support Group, Offering meditation, reiki healing and general discussion on natural therapies and preventative medicine. Tues 7.30-9.30pm.
- Self Empowerment and Healing Support Group. For confidence building and positive living. Thurs 10–11.30am.
- Health Workshops/Seminars for May, 2011.
- Emotional Freedom Technique (EFT) Workshop. This is a practical workshop introducing Emotional Freedom Technique (EFT) -a thought empowering technique that can help you reduce anxiety and remove underlying emotional triggers to unpleasant and stress provoking experiences. Through the use of EFT, self limiting thoughts are identified and released using a specific 'tapping technique' to reprogram a new belief system that is both self –enhancing and self –empowering. Saturday 21 May, 10am-1pm. Cost: \$40 or \$35 for members.
- Singing Bowls Healing Session
Learn about 'vibrational healing' through a wide range of Singing Bowls including crystal and traditional Tibetan bowls. Tuesday 24 May, 7.30-9.30pm Cost: \$8 or \$5 for members. Bookings essential!

All Welcome!

Held at Neighbourhood House and Community Centre, Elizabeth Drive, Sunbury. Phone: 9740 3977 (Mon/Wed/Fri) or Sandra on 0411 100 947

Website: www.cancernaturaltherapyfoundation.org/

submitted by Sue de Jong



start your Aikido journey

Simon Harris, 5th Dan
Japanese trained

Tues & Thurs evenings
7pm, Macedon Community Centre,
Tony Clarke Reserve,
Waterfalls Road, Macedon



www.iwamaaikido.com.au
0417 505 611

Trentham Farmers Market

May's Trentham Farmers Market will showcase our region, with lots of local goodies on offer as part of the DMP Harvest Week Festival (May 13 to 22) and also the Great Trentham Spudfest is on over the same weekend (May 20 to 22) So come and join in the festivities and while you're here "Stuff your Pantry!"



scenes from trentham farmers' market

All proceeds go back into the community through our 'Not for Profit' Trentham Lions Club Inc. and the various community groups participating in our sausage sizzle roster. Over \$13,000 has been raised by our community groups since the Market began in August 2009. The May BBQ will be operated by the Trentham Cricket and Football club.

The Trentham Farmers Market, at Trentham Town Square, is held the third Saturday of every month, 9am – 1pm. The Farmers Market has a selection of dairy and goat's cheeses, eggs and live poultry, sourdough, preserves, olive products, plants and fresh flowers, organic and conventional wines and an assortment of natural farm products, we have a number of new stallholders with seasonally fresh produce including luscious apples and pears, locally brewed beer, and the potato is back!

For further information, contact Tracey Roy via phone, 0447 836 171 or 5424 1185 or email trenthamfarmersmarket@yahoo.com.au

Submitted by Tracey Roy

Clarity *Integrated Technology Services*

...the quality of being clear, pure, or transparent

Business networking
Home audio/video & networking
Broadband/wireless
Hardware sourcing & evaluation

Making technology easy....
No matter who, or where you are



Ian Templeton

PO Box 1020
Woodend
itempleton@ovi.com

0419 556 140

Library and Information Week

23 - 29 May 2011

Visit the Library and find out about all the services and resources we offer. Did you know members can:

- Download a free Bolinda E-audio book?
- Look up family history through databases on our website?
- Use free internet access at the Library?
- Access online resources for kids including Tumble Books, Intrepica, Early World of Learning and World Book Encyclopedia? These are available at home.

We hope to see you at the Library during May. It's a good time for you to find out about the range of available resources.

A special activity on May 25th is National Simultaneous Story time. Families are encouraged to book into a session at one of our Libraries. Join Phoebe, a plain, grey bird, as she searches for ways to make new friends, using an array of brightly coloured costumes. We hope you will join thousands of other Australian children for this activity.

Submitted by Cockram and Susie Prestney
Woodend Library woodend@ncgrl.vic.gov.au



KYNETON EQUIPMENT & PARTY HIRE

FOR ALL YOUR HIRING NEEDS
8-12 BEAUCHAMP ST PHONE (03) 5422 2311
KYNETON VIC 3444 FAX (03) 5422 2930

Email: kynhire@bigpond.net.au
website: www.kynetonhire.com.au

UNEARTH

CREATIVE DANCE
Joyful expression through guided, improvised movement

Classes at Jubilee Hall Macedon on
MON:4-5pm 5-8 years. WED: 9.45am Preschool
11am child + parent(45 mins), Mum n bubs yoga
12- 1pm Adult dance Thursday 8.15-9pm.

Call Della: 0422 652 688 or unearthjoy@gmail.com
www.unearthcreative.com.au

This newsletter is supported by



PAY FOR 3 MONTHS



For this month only, buy 3 months membership and we'll give you 3 months free! Offer includes a free BioAge assessment PLUS 3 one-on-one training sessions.



* Total package is \$395. Contact the studio for full T&Cs.

GET 3 MONTHS FREE

Offer ends 30th June so contact us today.

Contours Gisborne
28B Aitken Street
Gisborne 3437

Ph 5428 2519

contours.net.au

Contours
Fitness for women on the go.



FIREBIRD MOTOR REPAIRS CAR WASH

31 URQUHART STREET
WOODEND 3442.

OPEN 7 DAYS
Phone: (03) 5427 2255

BGE

Joinery Quality you deserve

• Kitchens • Shop fittings • Bars

BRAD ELSE

Mob: 0412 355 548 Ph: 5422 2571
New Factory & Showroom

Lot 11 Kyneton - Metcalfe Road, Kyneton
11am - 5pm Fridays or by appointment

All news items, articles and community news
columns must be received by 15th of each month.

ADVERTISEMENT

Donna Petrovich MP

State Member of Parliament for Northern Victoria Region
Parliamentary Secretary for Sustainability and Environment

Working for the Macedon Ranges Community

Your Country Voice



☎ 5782 2011
84 Sydney Street, Kilmore
✉ donna.petrovich@parliament.vic.gov.au

Authorised by D Petrovich, 84 Sydney Street, Kilmore.

Haydn's Creation

– *The Gisborne Singers, a Review*

The performance opened with the orchestra's swirling, moody Representation of Chaos. This young group had the occasional less-than-perfect start in Part 1 but quickly made the most of the glorious writing. Amongst many accolades that could be given, the woodwinds stood out in particular. Choir pianist Alan Grinton played an unobtrusive harpsichord accompaniment.

The Singers were in fine form. The group was the largest it has been in recent years. More importantly, they were confident and clearly enjoying the music they were making. As an audience member it was contagious and difficult not to break into applause after the "Awake the harp" chorus! Perhaps the men were slightly disadvantaged in terms of projection by being placed in the apse, a quirk of the venue – and the size of the choir.

Regular soloists Catherine Pendelich (soprano), Peter Mander (tenor) and Manfred Pohlenz (bass) were delightful as usual. The gorgeous Duet between Adam and Eve with the Chorus sounded for all the world like a love song, which is exactly what it is.

This was a great achievement by all concerned, no doubt shaped by the good-humoured and enthusiastic direction of Stephen Brockman.

Submitted by Richard Whiteley



WOODEND & DISTRICT PODIATRY

John F. Shapland

Resident Practitioner

Reg. Department Veteran's Affairs

5427 2064
Business and After Hours

1895 Mt. Macedon Rd., Woodend

Woodend Senior Citizens

Come and join our activities:

Tuesday at 1.30pm Button Bingo (win a gift), Friday at 10.30am Carpet Bowls; we desperately need more players please, at 1.30pm Cards.

General meeting and Trading Table Friday 6th May at 11am, followed by lunch, bring or buy your own. Then a fun afternoon and cards at 1.30pm.

Monday 9th May bus trip to Shepparton via Nagambie. Lunch at Shepparton RSL Bowls Club and after lunch a visit to SPC.

Tuesday 10th May at 1.30pm we are hosting Givonni Fashions including Slades Knitwear, many bargains.

Friday 20th May Romsey-Lancefield Senior Citizens are visiting us for a Carpet Bowls and Cards Day including lunch at 12 noon, please book.

New members welcome.

Submitted by A. Warnock President Ph: 5427 1644

This page is proudly sponsored by the 19th HOLE SHOPPING CENTRE



Upcoming Events

May

- 1 MS Cycle Challenge & Fun Run
- 5 Woodend Red Cross Dutch Auction
- 7 Tylden Primary School Fair and Tractor Pull
- 7 Woodend Hawks v Lancefield
- 11 Otesha Cycle Group Sacred Heart
- 13 Celts and Cobbers
- 13 Edvardo The Performing Waitor
- 13 Fall of the Roman Umpire
- 13 Best of Broadway Kyneton
- 13 – 22 Daylesford Macedon Produce Harvest Week Festival
- 14 Woodend CFA Fundraising breakfast
- 14 Woodend Hawks v Macedon
- 14 Humble Spud Luncheon
- 1 – 21 HMS Pinafore
- 21 DMR Junior Chef of the Year
- 21 Stroke Awareness
- 21 Woodend Hawks v Wallan
- 22 Tony's Practice Open Day
- 23rd Woodend Winter Arts Festival School's Day & Literary Dinner – Vic Hotel Woodend

June

- 10 Celts and Cobbers
- 11 – 13th Woodend Winter Arts Festival

July

August

- 9th The Census of Population and Housing
- 12 Celts and Cobbers

All Community groups and events are invited to submit their dates for listing on the Community events calendar

PLEASE SEND US YOUR FUTURE DATES

COMMUNITY GROUPS CONTACT DETAILS

- Alcoholics Anonymous Friday night, Cobaw Community Centre 0409 131 144
- Australian Breastfeeding Association, Heather 5427 2398
- Cobaw Thursday Walking Group 5427 3340
- Daylight Masonic Lodge, 5427 2480
- 1st Woodend Scout Group, 5427 4968, Jenny
- Friends of Macedon Ranges Library, Chris/Bill 5427 2469
- Garden Club 5422 6062 / 5427 3340
- Kyneton Municipal Band Doug 0411 420 113
- Living Word Christian Church 5429 6327
- Historical Society, Courthouse, 5427 2523
- Macedon Ranges & District Motor Club, 10 Webb Cres, New Gisborne 1st Wednesday each month 8pm
- Macedon Ranges Animal Aid, Buffalo Sports Stadium, 5427 1752
- Macedon Ranges Bridge Club, 5420 7595
- Macedon Ranges Families of Children with Disabilities Support Group, 5427 3365
- Macedon Ranges Residents Assc. 5427 1481 or 5427 2651
- Macedon Ranges Communicators (ITC), 5427 2669
- Macedon Ranges Photographic Society, Ron Mathews 5427 3284
- Parent Support 4 LD- Kerrie 0414 432 158
- Probus, 5427 2003
- R.S.L., Anslow Street 5427 3122
- Red Cross, 5427 1260
- Rotary Club of Woodend, meetings weekly at Vic Hotel Thursdays 6.45pm, Brendan 5422 6442
- St. Mary's Guild, 11am, 4th Wednesday of month
- St. Mary's Street Stall, 9-12 noon outside Woodend Newsagency (2nd Sat of the month)
- Woodend Landcare Group, Jo 5427 1909 or Doug 5427 0666, 3rd Tues Meeting, 4th Sunday Working Bee
- Woodend Angling Club, RSL Hall, 5427 2395
- Woodend Art Group, Railway Station, 5422 6172 or 5427 1659
- Woodend Hanging Rock Petanque Club, Hanging Rock Reserve Ph: 5427 2477
- Woodend Lions Club, Meetings 2nd/4th Wednesday each month, ph Robyn Roberts 5427 1342
- Woodend Model Railway Club, Buffalo Stadium
- Woodend Pony Club, 5427 2793
- Woodend Senior Citizens Club, Comm. Centre
- Woodend SES Training Nights Monday, Urquhart St
- Woodend Winter Arts Festival Inc., Jacky 0417 225 268

- Ian Marks Liquor**
1300 627 575 ext 24 &34
- Blue Orange Concepts: homeware**
5427 4500
- Woodend Pizza & Pasta**
5427 3777
- Coles Supermarket**
5427 2377
- Collier Office & Business Assist and Woodend Copy Centre**
5427 3092
- Pets Haven**
5427 3603
- Mitre-10 Woodend Hardware**
5427 2314
- BP Woodend**
5427 2248
- Target Country**
5427 4366
- Macedon Ranges Travel Services**
5427 4777
- Kosmac & Clemens: optometrists**
5427 4577
- Woodend Cycles**
5427 2662
- Salvation Army Family Store**
5427 4421
- Loose Change Bargains**
5427 4466
- Bodywise Underwear**
1300 66 17 66
- Australia Post**
5427 2600
- Feeling Framed**
5427 4455
- The Spa Beauty Therapy Centre**
5427 3322
- HIGH STREET SHOPS**
- Color Me Cooper**
5427 1454
- Chelleon For Hair**
5427 3246
- RT Edgar Real Estate**
5427 1222
- Woodend Bakery Cafe**
5427 3434

Woodend Neighbourhood House

Term 2 is in full swing now. Thank you for everyone who supported the Whole Town Garage Sale day in early April. There were 33 garage sales for people to browse and shop at and I am aware many people came to Woodend from far and wide for the day.

Did you go away over Easter, enjoyed yourself on the water and have or are thinking of getting your own boat? Make sure you are safe by undertaking Recreational Boat & Powered Water Craft training prior to getting your VicRoads Licence. 13 May between 6-10pm is the last opportunity until spring so book now.

There are always new and existing courses for you whether educational or hobby based. There are many exercise classes to keep you fit this autumn including Zumba, Tai Chi, seniors exercise, yoga, belly dancing, Pilates and cycling. We don't currently have a walking group, but if you are willing to lead a small group for a regular walk we would love to hear from you.

If you are more interested in education we have our Course in Integration Support, starting and developing your business, Straight to It – understanding the dynamics of your business, computer classes for beginners and business, email, internet and QuickBooks training.

Our creative classes continue to thrive so whether you want to make a teddy bear, take up scrap booking, or jewellery making, learn Thai cooking, write creatively, speak Spanish, get the most from your camera, make a mosaic house, or a clay model of a human head, learn patchwork and quilting, or understand Angels over a cuppa we really do have something for everyone.

Are you a professional person who provides support to others in a court setting? If so we have an informative

Quality Blinds at factory direct prices

- Sunscreen/Blockout Blind
- Latest Styles/Fabrics/Colours
- Automated Blinds
- Roller/Roman Blinds/Venetians
- Exterior Awnings
- Professional Installation Team

Ring Now for a **Free In House Consultation/Quotation**

Mark 0437 759013

Simon 0458 338995

Contemporary Blinds
Where Style is Affordable

session designed just for you, providing you with the knowledge and the opportunity to develop the skills required to give evidence effectively in court. The workshop will be run by David Cherry who has 30 years experience as a Clinical and Forensic Psychologist.

We have several opportunities for children with drama, art, Mini Maestros, preschool art as well as LIFE – young women's program Living in Full Effect, lead by Annie Rowland for teenagers who will experience a wide range of activities designed to provide and encourage greater self-awareness.

We are bringing the Department of Primary Industries workshops in Environmental Best Management Practices on Farms Program to Woodend in May where you can be guided through the steps to make your own environmental farm plan.

We are hosting a Biggest Morning Tea on Monday 30 May. It is sure to be a fun morning with a Sixties theme and a Decorated Cup Cake Competition. Tickets \$10 so please book in now.

We have a Tea Cosy Challenge running this year. Create a tea cosy, pop it on a pot and enter it in the challenge by dropping it in at the House. All Cosies will be on display during the year and there will fun prizes too.

For details of all courses and opportunities ring 5427 1845, or visit 47 Forest St.

Submitted by Sarah Campbell, Coordinator

Truck & Bobcat Hire

Paving Turfing Rockeries
Paling & Colourbond Fencing
Watering Systems Retaining Walls
All of your garden and driveway

construction catered for
CD & MC Muir Pty Ltd
craig@bobcatcraig.com

0417 331 085 5427 3095



You have Questions  We have Answers

CHINKA (HEP) STEEL - Your Local "One Stop" Legal Shop

All General Legal Services

- * Family Law—who gets what?
- * Being Sued?
- * Been charged by the Police?
- * Want to challenge a Will?
- * Conveyancing - avoid the traps!
- * Setting up a Business?
- * Need a Parenting Agreement?
- * Why do you need a Will?
- * What is a Power of Attorney?
- * Are you a Victim of Crime?
- * Need a Co-habitation Agreement?
- * Executor responsibilities?

Victoria Legal Aid

Why travel to the city when you can get great service & results locally!

Ph: 5427 2477
74 High St Woodend 3442
www.chinkasteel.com.au
chinka@chinkasteel.com.au

All news items, articles and community news columns must be received by 15th of each month.

The **Anger Clinic**
On Wednesdays
with **Dr Frank Donovan**
BSW(DIST), MAASW (ACC. MH), PHD.

Dealing with Anger and Family Violence

Promoting Mental and Emotional Health

Improving Human Relationships

CLINICAL SOCIAL WORKER, PSYCHOTHERAPIST, COUNSELLOR
Medicare rebates for eligible patients referred by medical GPs & Psychiatrists

(M) 0402 710 768 Email donovan@impulse.net.au

*From 1 copy
to 10,000 prints*

**Talk to our team about your
next project:**

- business cards
- stationery
- invitations
- marketing brochures
- booklets
- posters & displays
- manuals & reports
- variable data printing
- green printing

*Competitively priced
Great service
Brilliant results*

copy • print • design • display • office supplies • corporate services

P 5427 3092 F 5427 3209 E print@collieroffice.com.au
A Shop 5, 130 High Street Woodend

TAX TIME

it's just around the corner . . .



If you need to stock up on office supplies, new technology or update your office furniture, talk to the team at Colliers. We'll give you professional, easy-to-understand advice about what will suit you best. ... and free delivery on any office furniture

Meta Massage

SPORTS/REMEDIAL MASSAGE, SHIATSU, REIKI
Raymond White

Telephone 0411 268 336

for an appointment

18 years experience • Chronic and acute conditions
Sports injuries • Rehab work

New Natural Parenting Melbourne Group Starting in Woodend

This month we are starting a Natural Parents Group at Woodend Playgroup as part of the Natural Parenting Melbourne (NPM) network. NPM is a network of parents aiming to support the diversity of natural choices available to families as they journey their way through pregnancy, birth and ongoing parenthood.

The aim and focus of Woodend NPM is to create a relaxed environment in which parents can create friendships, share experiences and support each other to confidently parent our children in a respectful way that feels right to the individual. This is a parenting style that is sometimes referred to as attachment, intuitive or conscious parenting.

Our members value evidence-based parenting practices including full-term breast feeding, gentle discipline, supporting the attachment and development of children in close and responsive relationships. This is not a checklist however; the important thing is creative, strong and empathetic relationships with our babies and children.

So come and take the opportunity to connect with other like-minded parents over a cuppa. For more information on NPM, the website is www.naturalparentingmelbourne.com.au if you would like to join our group in Woodend, please contact the Woodend NPM co-ordinator, Sarah on 0428298849 or email woodendnpm@gmail.com

Submitted by Sarah Copland

What's New?

Warm and cuddly
hand-knitted Beanies
for Babies and Toddlers.

Orders taken.

 **ZAPPA-do** *Baby and You!*

3/87 High Street, Woodend • 5427 1270 • www.zappado.com.au



The Firefighter's Recipe Book Returns

In 2008 "B platoon" at the Bendigo Fire Station, initiated by Bryan 'Brizza' Suckling, produced the very popular Firefighter's Recipe Book. Due to an overwhelming response these have now returned and are once again available for purchase.

There are plenty of recipes to choose, ranging from Mains, Dessert and Smoko such as Michelle's Little Aussie Nuggets, Quazza's Cherry Berry or Brizza's Biscuits.

Leading Fire Fighter Bryan Suckling from Bendigo Fire Station took the lead and initiative in developing the book seeing it as a way of combining a fundraising activity with CFA community education messages. The idea was to create another way of reaching the community.

As well as easy to follow recipes, the book contains key messages relating to the CFA Early Fire Safe and Fire Ready Victoria programs.

All proceeds from the sale of the recipe book will be donated to Relay for Life and the Bendigo Health Care Group. The Recipe Book costs \$11. plus postage.

To order your copy please contact CFA District 02 HQ on 5430 2200

Submitted by Paul Tangey

The contents of The New Woodend Star are contributed by locals and community groups



Woodend Produce Store
31 Brooke Street Woodend
Ph. 0354272753

**Poultry, Stock & Horse Feeds,
Hay, Grain, Chaff
Pet Food, Hardware, Fencing,
Electric Fencing, Tanks, Oils & Lubes,
Irrigation, Potting Mix, Fertilizer,
Herbicides & Much More!!
Elgas LPG Deliveries
We fill BBQ Gas Bottles**

NOW OPEN TILL 4PM SATURDAY

**Come in and see Wayne, Mick & Albert
for friendly service and expert
knowledge.**

Pedal power, funky vibes, and the odd fair-trade chocolate bar:

Otesha on a mission to inspire our young people

In late April, ten young advocates of the environment will be peddling from Melbourne through to Canberra with a mission to inspire young people to think about sustainable consumption in their everyday lives. On arrival in Canberra on June 22nd, they will have cycled over 1300 km of VIC and NSW, without a support vehicle! And, on Wednesday May 11th they will be arriving in Kyneton and performing at Sacred Heart College!

The Otesha Project (Australia): Cycling for Sustainability launches their 2011 Capital City Tour at the CERES Market, East Brunswick, Melbourne on the 2nd of May. The tour will take them to regional schools along the central gold fields and western plains of Victoria to the beautiful Murray River of NSW and finally to our beautiful capital city, Canberra.



Since 2000, The Otesha Project (Aus.) has pedaled across Australia educating youth and raising awareness about environmental sustainability and social justice issues. Otesha is a Swahili word for 'reason to dream' and is the underlining philosophy of the organisation. The Otesha crew combines theatre performance with interactive workshops to empower high school students to consider their life choices to ensure a positive and sustainable future. They strongly believe that you need to 'be the change you wish you see'. This inspirational message is emphasized to youth throughout their bicycle journeys.

For Michael – tour coordinator – who traveled from LA, the experience of the bicycle tours is fulfilling on many different levels:

"I'm really excited to start this trip because I get to ride across a part of Australia with a great group of like minded people and have the opportunity to directly inspire the youth to make a change in their lives. We are actually walking the walk and not just an ad on TV that tells people to change their habits. We are out there doing it!"

Whilst on tour, participants will present the comical Morning of Choices theatre performance; an interactive workshops to youth and community groups. This year's amazing group of young individuals has spent the past six

continued on page 22

continued from page 23

months working together to organise the 2011 tour and create workshops around issues they are passionate about. Such issues include ethical clothing, water usage, electronic waste and sustainable food.

The Otesha Project (Aus.) seeks support from the communities they visit; any donations of food would be most welcomed. There are also opportunities to host, share stories and learn from the ten amazing crew members whilst they visit your community. Crew members are always looking to engage with other sustainable community initiatives, so please feel free to contact them online through Kate Tucker, at info@otesha.org.au.

Submitted by Emily Nancarrow

Woodend RSL Women's Auxiliaries

The Dine and Dance days have been excellent with the last one hosting 82 persons from nursing homes and locals. A light lunch and excellent entertainment plus various speakers are offered for \$10.00 and a great time is had by all. These will be held on the first Wednesday of the month and is available to anyone.

Also our usual Friday night dinners are definitely worth a visit and popular Gary Nish is offering very reasonable priced meals. The entertainment is excellent. Bar prices the best in town and you will be warmly welcomed but please book early. Meals are the first and third Fridays of each month. Don't let the weather put you off the hall is fully heated and very comfortable.

Our Auxiliary girls are knitting articles for our welfare people again this year and gifts of unwanted wool would be much appreciated. Please contact our president Margaret if you can help with wool or if you are a knitter, we will supply you with wool. There is lots of cold weather coming and lots of cold people.

Submitted by Betty J Barned.



NERRAD
BUILDING SERVICE

REGISTERED BUILDING PRACTITIONER (Est. 1992)

SPECIALISING IN:

- Renovations & Specialist Carpentry Work
- Heritage Building
- Pergolas & Decks
- All General Home Maintenance
- Prompt & Reliable Service
- 10 years based in macedon ranges & surrounds

For a free estimate phone Darren - 0438 756 231/5427 2215



Magnetic Websites

Martin Beaumont

PHONE 03 5427 4478
MOBILE 0414 274 988
HTTP www.magneticwebsites.com.au
EMAIL martin@magneticwebsites.com.au

Developing websites for the Macedon Ranges and beyond, ask how we can help you get online

Healthy Month for Woodend Rotary

The Rotary Club of Woodend is expecting a very busy month in May. Community Director Grant Hocking stated that there are several health initiative projects that the club has been involved with over several years and we are again involved in 2011. These

include Bowelscan, Blood Pressure Awareness and Rocan. **Rotary Mothers Day Raffle**



This year Rotary will once again hold a raffle to raise funds for ROCAN.

ROCAN was set up to support ovarian cancer research and is now also affiliated with the Olivia Newton -John Cancer and Wellness Centre.

The club is being supported by local traders and has several items donated towards the raffle. In particular Mort at Blue Orange Concepts has been very generous.

Ovarian cancer is a very lethal cancer that affects woman's ovaries and is difficult to detect because symptoms are vague and there is no reliable screening test. This means that it is often diagnosed when the cancer is very advanced and so survival rates are low. There are 1200 new cases and 900 deaths a year from ovarian cancer. The aim of supporting research is to support the further development of tests that will diagnose this cancer earlier.

Rotarians will be selling tickets on Saturday 7th May in Woodend so please show your support and purchase a ticket. It will be drawn that afternoon in time for Mothers day. Winners will be notified that afternoon.

BowelScan

Rotarian Howard Bradfield is coordinating this program and will be placing kits at the local pharmacy during May. These kits are taken home and used to collect samples over 3 days. The kit is then returned to the collection bin in the pharmacy. Rotary will ensure that these kits are delivered to the lab. Letters notifying of the outcome will be sent to individuals with information of the test and what actions to take. The kits only cost \$10.

Know Your Numbers - Stroke Awareness

Know Your Numbers is a national program run in conjunction with the National Stroke Foundation and is scheduled Saturday 21st May 2011. As we have over the last 4 years members will set up a testing station and assess an individual's blood pressure. Readings will be recorded for a number of reasons. Firstly general information will be used to support Stroke Foundation research. Also if a high reading is recorded people will be given a card and be asked to follow up with their GP. The recording on the day will be anonymous and as there are many reasons for high blood pressure it is important to have a proper follow up with a GP. This test will provide an awareness of blood pressure to those who may not be aware, or have theirs regularly checked. This is a free service to the community.

submitted by G Hocking, Woodend Rotary Club

**Running late?
Leaving Early?
Need Coffee?**

**The green bean machine
is located at
Woodend Train Station**
(platform 2)

Drive thru service available
Just text your order &
pick it up on your way

Mon to Fri 5.15am - 9.00am

Call Dean Frank on
0439 354 432 or
call in at Woodend
Train Station



Children's Window to Sustainability

Woodend Playgroup and the Macedon Ranges Sustainability Group (MRSG) have been working together in partnership to create a 'Chook Window'. The 'Chook Window' is a viewing window for the children of Woodend Playgroup to view the neighbouring chickens in the permaculture garden. This joint venture has been successful in promoting sustainable living ideas to the youngest members of the Woodend Community.

A huge thanks must go to Greg Coates from MRSG who designed and then installed the perspex viewing window and feeding hatch. Greg suggested the idea, then sourced the materials and came up with the idea of using a cat door as a feeding hatch. MRSG aims to demonstrate a working permaculture garden so that visitors can take and use ideas at home.



The partnership with Woodend Playgroup adds to the commitment of the MRSG of increasing community involvement and the educational benefits of this unique garden. The 'chook window' provides a wonderful opportunity for this to happen. The children get the joy of interacting and feeding our feathery friends whilst the chicken's benefit from the extra tucker and attention. Each morning's playgroup lets the chooks out and the children watch and feed them any scraps leftover from their lunch-box or even kitchen scraps that the parents bring from home.

continued on page 24

Peter Baker & Associates Barristers & Solicitors

**Family Law
Criminal law
General & Commercial Litigation**



Peter Baker
BSC & LLB (MONASH)

Juliana Smith
BM GDLP & LLB (UNE)

Fran Medina
BA LLB

By Appointment at: **27 Urquhart St. Woodend**
Head Office: 389 Hargreaves St, Bendigo
info@peterbakerlaw.com.au
Ph: 5441 7300 Fax: 5442 4232

FREE FIRST INTERVIEW*

*For advice only matters

NEIL J TURNER

- FENCES
- GATES
- IRON WORK
- STONEMWORK


NEILTURNER.COM.AU

0409 285 256

Located at the rear of the Woodend Neighbourhood House, anyone is welcome to visit the permaculture garden (and the chooks!) at anytime. Helping hands are always very much appreciated and people often go home with a basket full of garden produce. MRSG meets fortnightly in the garden on the second and fourth Friday of the month from 10-12. The Home Produce Exchange and working-bees are held on the first Saturday of the month at 10:30am.

Woodend Playgroup, situated in Forest Street, is a self funded organization, where parents and children can meet on a weekly basis. The playgroup has great facilities both indoors and outdoors for children aged 0-5. We are always welcoming new members to join us, so if you have just moved to the area, or are wanting to meet more people in our community, then playgroup is the perfect place to meet other families. Our sessions run every day of the week and groups cater for children of similar age. This month we have a new group starting for 1-2 year olds on Tuesday mornings and are looking for more families to join. For enrolments and enquiries for any of our groups, please call Emma on 54271867 or 0447 621 855.

Submitted by Sarah Copland



WILLIAM BAJZIK N.D.
NATUROPATH
HOMEOPATH HERBALIST
BOWEN THERAPIST
ATMS 5485

• IRIDODOLOGY • ALLERGY TESTING •
• ACUPUNCTURE POINT ANALYSIS •
• HERBAL MEDICINES •

P: 5427 1666
M: 0402 880 271

42 ANSLOW STREET
WOODEND

CASTLEMAINE—GISBORNE
CLEANING SERVICE
CHRISTINE ADAMS, FRYERS ROAD, ELPHINSTONE 3448
Carpet Cleaning Specialists
Duct Cleaning, Window Cleaning, etc.
For all your cleaning requirements
- no job too big or too small -
obligation-free quotes
Tel: 5473 3307 Fax: 5473 3310
Mobile: 0419 006 591

Woodend Red Cross Unit

The Woodend Red Cross Unit invite you to a Dutch Auction and afternoon tea on Thursday, 5th May at 1pm. It will be held at the Masonic Hall, Forest street, Woodend [near Police Station]. Entry is \$5 which includes a delicious afternoon tea. Helen Roberts will once again be running the auction. Come along for a lovely afternoon.
RSVP Norma 5427 1260, Victoria 0418 340 902

Submitted by M.Hocking

CENTRAL VICTORIAN TIMBER

- Timber •
- Sleepers •
- Treated Pine •
- Cypress posts •
- Hardwood •
- Plaster •
- Doors •

Specialists in house
lots and extensions

Phone: 5427 1090

Email centralvictimber@bigpond.com

Monday to Friday 8am - 5pm Saturday 9am-12pm

**988 Blackforest Drive Woodend
(Old Sawmill Site)**



CONSTRUCTIONS Pt 1
SERVICING THE MACEDON RANGES
0401 499 898
**EXTENSIONS
RENOVATIONS
NEW HOMES**

 REGISTERED Building Practitioner  Master Builder

Advertisers can receive a 10% discount by booking
and pre-paying for 11 editions



ADVENTURE FLIGHTS UNLIMITED
Get ready for the ride of your life

Warbird Adventure Flights
at Kyneton Airfield

Gift Certificates Available
Ph: 0403 891 198 www.adventureflightsunlimited.com.au

Welcome to the Woodend Star

Kids Club

May Birthdays

1st	Charlie Pace	Turns 5
6th	Jamie Staresina	Turns 11
7th	Nicola Fitzgerald	Turns 13
7th	Cooper Ridington	Turns 4
9th	Tyrone Hinsley Hargreaves	Turns 8
9th	Jessica Louise Thorne	Turns 9
10th	Jett Sanders	Turns 6
17th	Cooper Ridington	Turns 4
26th	Jamieson Simpson	Turns 6

Happy Birthday Everyone!

JOIN THE WOODEND STAR KIDS CLUB

Fill in your details below and send to P.O. Box 387 Woodend
Age limit is 13 years old. Must be a resident of the 3442 postcode

Full name: _____

Address: _____

Date of Birth: _____ Age: _____

Phone: _____

Parent/Guardian

Signature: _____

Sponsored by:



Shop 5, 130 High St, Woodend. P: 5427 3209 e: sales@collieroffice.com.au

You can collect your birthday surprise by
visiting Collier Office & Business Assist

Grantra
HOME IMPROVEMENTS
Specialising in Bathroom Renovations

PO Box 736, Woodend 3442
0418 175 877
www.grantrahomeimprovements.com.au

Master Builder REGISTERED Building Practitioner

News from Newham hall

What a busy and successful month the Hall has had.

Our Giant Garage Sale was an enormous success - we raised \$5,000 and we are indeed grateful to those folk who brought anything from trailer loads to single items to support us. We sold preserves, cakes, cupcakes, had a sausage sizzle and raffled a load of wood which was won by Gladys Adams and the "treasure" went out of the Hall at a great rate.

Thank you to all those people who helped on the day - too many to record but they know who they are - we could not have done it without you - you are all saints and angels.

The Harvest Festival and opening of the Community Orchard in the Hall grounds was also a great success. Stephen Ryan opened the orchard and the various post harvest sessions were well supported - well done to those who worked so hard to organise it. The mosaic in the orchard is beautiful.

I have been taking photos and gathering up all sorts of bits and pieces over the years which go to the Woodend Heritage Society as part of leaving a "current" history of Newham for the future. Does anyone have old photos, newspaper cuttings, programmes and so forth which they don't want? These could be added to the collection. Please ring me on 5422 6845 if you do have something of interest.

The Hall is always available for hire

Ring Ian 5427 0478 or Val 5427 0387 to make bookings. Not only do we have new facilities, we also have flatware for 100 people.

Submitted by Sally Stabback.

Polaris
Financial Services Pty Ltd

1605/530 Lt Collins St Melbourne Vic 3000
Tel 9629 4979 & 9629 4975 Fax 9629 4973

Strategic Financial Planning - Holistic Appropriate Financial Advice
Our comprehensive services
are available in the Macedon Ranges.

- Strategic financial advice.
- Tax effective savings strategies
- Social security specialist
- Retirement & Superannuation
- Wealth protection & Insurances
- Financial life strategies
- Self Managed Superannuation Funds

Polaris welcomes your enquiries and there is no cost for an initial one hour appointment. Over this initial hour we discuss your personal needs and objectives and from there, work with you towards the most appropriate financial strategic plan.

Local by appointment only, Macedon Ranges Business Centre, High St Woodend
Call Anneliese to book 0413 373 884

Polaris Financial Services Pty Ltd ABN 99 13110 5514
Is a corporate Authorised Representative (No. 327962) of
Australian Financial Services Ltd (AFSL 297239).
Anneliese Willmott Adv Dip FS (FP) is an Authorised Representative
(No. 268440) of Australian Financial Services Pty Ltd AFSL 297239.

Feel Sensational at The Spa

The Spa is celebrating Women in May

Exquisite treatments await you and someone special at The Spa. Choose from our special packages or create your own; Yummy Mummy Package for \$129 or our Scentual Delight for \$155 are just 2 of many packages available.

A Spa Gift Voucher is the perfect way to pamper a loved one ... especially for Mother's Day. Select from the Menu or create your own package . . . the choices are all yours.

As the cooler days of both Autumn and Winter rapidly approach, enter the warmth of The Spa and imagine climbing into a warm bed as you prepare to unwind for your chosen treatment . . . The Spa has a little surprise waiting for you (and yes its warm) in each of their beds... clients who have already experienced this little treasure have been most impressed and thankful, especially on those chilly winter days that are just around the corner!

From not so relaxing (but often essential) waxing to purely indulgent facials, body wraps, massages and more, Cynthia and The Spa Team invite you to relax and indulge.

The Spa promotes various packages throughout the year, often based on the season. Please visit our website, www.thespa.com.au for our latest package and current newsletter.

The Spa provides a truly relaxing, peaceful and tranquil experience. You will find Michelle, Tamara, Steph, Amanda, Bianca, Kristy, Michele, Kristina and Jess ready to pamper you at any time.

Cynthia, Dayna and their fabulous team look forward to welcoming you to The Spa soon.

The Spa has two convenient locations, at 41 Anslow Street, Woodend. Phone 5427 3322 and at 3/31 Brantome Street, Gisborne. Phone 5428 8800. www.thespa.com.au

Submitted by The Spa

Brooke Street Medical Centre

We thank the local community for your patience during our building works. There have been a number of disruptions – particularly with parking due to road works carried out. These disruptions are almost at an end and our normal parking spaces, plus many more, will soon be available.

The front part of our new building is now open and patients are seeing Doctors in these new consulting rooms. We are also pleased to welcome Dorevitch Pathology back in with us in this new section of the building.

The back section of the new building is still under construction and should be completed by June this year. This will be home to our new Treatment Room with special facilities for urgent and emergency treatment as well as quiet rooms for procedures. This Treatment Room facility will also be a key training area, especially for medical and nursing students.

Once we have moved into our new Treatment Room – the old facility will be refurbished to create a Rehabilitation Gym. The Gym will help those with rehabilitation for injuries as well as management and prevention of chronic disease.

Submitted by Carole Meade, Clinical Care Coordinator
Brook Street Medical Centre

All local groups, clubs and committees are invited to submit articles for publication



The Spa is
Celebrating Women in May

Exquisite treatments await you and someone special at The Spa.

Yummy Mummy Package for \$129
Scentual Delight for \$155

The Spa
Beauty Therapy Centre

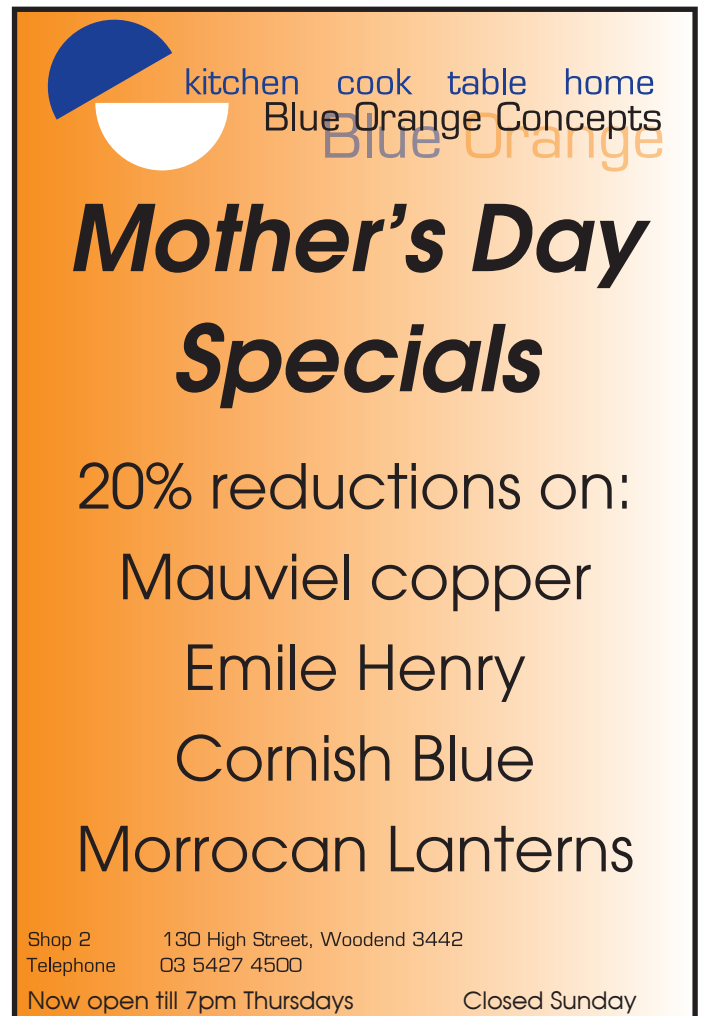
Gisborne | 3/31 Brantome St Gisborne 3437 | 03 5428 8800
Woodend | 41 Anslow St Woodend 3442 | 03 5427 3322
www.thespa.com.au



KWIK KERB
CONTINUOUS CONCRETE EDGING
BY PATENTED MACHINE

Specialising in:
CAR PARK KERBS • ASPHALT EDGING
GARDEN EDGING • VARIOUS PROFILES
REPAIR WORK

IAN
0409 443 036



kitchen cook table home
Blue Orange Concepts

Mother's Day Specials

20% reductions on:

- Mauviel copper
- Emile Henry
- Cornish Blue
- Moroccan Lanterns

Shop 2 130 High Street, Woodend 3442
Telephone 03 5427 4500
Now open till 7pm Thursdays Closed Sunday

THE BROOKE STREET MEDICAL CENTRE



Oxfam 100km trail walkers - Annie Barry (2nd from right) and friends

FLU vaccinations AVAILABLE NOW!

You can now book for a Flu vaccination – please ring reception on 5427 1002 for an appointment.

Consultations for just the flu vaccination will be bulk billed. Some people are also eligible to receive the vaccination free of charge; otherwise the cost of the vaccination is \$18.

The Government offers free vaccinations for those who are aged 65+, pregnant or indigenous aged 15+; and those people with chronic illnesses or conditions that predispose to severe influenza illness. Your doctor will assess your eligibility.

Travel consultations

Travel consultations are complex and take time. Please book a GP appointment 6-8 weeks before you are due to travel. This allows for any required vaccinations to be completed in the right time frame.

Closing the Gap



People of Aboriginal & Torres Strait Islander origin die at much younger ages and experience much worse burden from chronic disease than other Australians.

Please let us know if you are of Aboriginal or Torres Strait Islander origin. You may be eligible for services to deal with chronic disease risk.

Annie's walk – Oxfam 100km

Congratulations to our wonderful Dietitian, Annie Barry. She and her three team mates completed the Oxfam 100km trail walk in the amazing time of 25 hours & 44 minutes and raised \$2000. Setting out on Friday 1st April at 10am, Annie said the walk, which she completed at 11.44am the next morning, was “amazing”. The group shed tears as they finally crossed the finish line and Annie paid a special tribute to her friend who walked to the end despite having terribly blistered feet!

The 2,860 people who entered the event had 48 hours in which to complete the walk. Money raised has totalled more than \$2.3 million.

Plenty of appointments



Thankfully our doctor shortage of last year is now behind us. Please be aware that we now have both non-urgent as well as urgent appointments available on the day when you call.

Local artist's work displayed

We are currently hosting a display of artwork by local artist Les Marshall. The artwork is hung in our new consulting & Dorevitch Pathology waiting area. The art pieces make a bright and interesting addition to this new space in the Practice. We hope to make this an evolving exhibition with different local artists displaying their creations for six months at a time.

Brooke St. Medical Centre – tel. (03) 5427 1002 (after hours: tel. 1300 55 75 12)

Heritage Society News

Last month we highlighted the importance of recording day to day events to provide a snapshot of our local community for the future. We hope that some families will have already taken up this challenge.

One group which has been actively keeping our history alive is "Celts and Cobbers." Every Second Friday of the month at the RSL hall in Woodend, about 20 musicians gather to provide a wide range of musical offerings. As the name suggests, the gathering or 'Ceilidh' is committed to searching out and performing the folk music of our Celtic



Hugh, Steve and Thomas performing at Celts and Cobbers at The Woodend RSL

forebears and the tunes and verse that were so much part of the lives of the first white settlers in Australia.

Musicians come from all around the Macedon Ranges, some from even farther afield, and perform on a wide variety of instruments. Usually there will be guitars, tin whistles, harps, accordions, concertinas

and even bagpipes, all these often with the accompaniment of the bodhran or a bush base. Interspersed with the music there is usually some bush poetry, the occasional yarn and a song or two with the opportunity to join in if you feel like it. It really is a terrific night and a great way of keeping our musical heritage alive in a friendly and relaxed setting.

If this is something that you feel may interest you, the Woodend RSL in Anslow Street opens its doors at 7.30. A light supper is provided and drinks of all sorts are available from the well stocked bar. Entry is a \$5 donation, with all proceeds supporting the many good works carried out by the RSL. Dates for the next few evenings are Friday 13th May, Friday 10th of June, Friday 8th of July and Friday 12th of August.



Don Cameron (left) well known for his delightful renditions of Scottish and Irish songs and gentle guitar playing is the leader of Celts and Cobbers. Tom Walsh is there every month to share his vast knowledge of early Australian tunes which he plays on the violin and button accordion.

Submitted by Janet Hawkins.

WOODEND COMPUTER SERVICE

Sales - Service - Training & Help

THE BANK - OFFICE 3 - 75 HIGH ST WOODEND
JASON JOHNSON - 0400528129
pcs@live.com.au

24sevenalarms.com.au

24 Seven Alarms Aust Pty Ltd

- Alarms installed, Serviced and Monitored
- Data cabling and phone line installation
- Medical Alert Systems
- Access Control Systems PSBL: 732-083-90s
- Digital Video Surveillance CCTV packages: domestic and commercial

1800 247 111/ 03 5427 4411
sales@24sevenalarms.com.au

Regular business card advertisements (90mm x 55mm) are \$49 inc GST per month - book & pay 11 months and get 10% off.

WOODEND NURSERY & GARDEN SUPPLIES

OPEN 7 DAYS

"LOCAL KNOWLEDGE FOR LOCAL CONDITIONS"

36 URQUHART ST, WOODEND

Tel: 5427 1866 Mobile: 0428 271 866

Full range of garden & landscape needs
 Rock, Soil, Sands, Sleepers

Sand | Soil | Mulch | Pots | Pavers | Plants
Water features | Fire wood | Wine barrels
Hire Equipment | Synthetic turf | Sleepers

NURSERY ROAD GARDEN SUPPLIES

42 Nursery Road Macedon 3440 Victoria
 Email hello@nrgsupplies.com.au
 Telephone 03 5426 2400 | Facsimile 03 5426 4972

General open hours Monday-Friday 7.30-5pm,
 Saturday-Sunday 9-5pm. Arrangements outside these hours can be made.

SOLAR DIRECT

- Solar Hot Water
- Grid Interactive Solar Systems
- Stand Alone Power Systems

Ph: 1300 55 77 98
Mobile: 0411 269 489
Lancefield

Luncheon Success

The Rotary club held another successful luncheon in April. The catering was excellent with everyone enjoying the many savoury and sweet items on offer. Many raffle items were supplied by local traders and there was a lot of enthusiasm with prizes drawn on the day.



The purpose of the luncheon was to raise funds for Jumpstart- defibrillator program for the Woodend community.

Automatic External defibrillators (AEDs) are crucial during a cardiac arrest situation. JUMPSTART will ensure an AED is available in the Woodend community and should be in place within a few weeks. Woodend Rotary Community Director Grant Hocking stated that the club had been planning on introducing an AED following training of members last year. The placement of an AED in the community was enthusiastically supported by the members following the training. Once the device is available Rotary will also ensure that training is made available. Information has already been provided to business places and community groups in Woodend in anticipation of support for the training and AED. People are encouraged to keep an eye out for upcoming training which will be advertised in the community.

submitted by G Hocking, Rotary Club of Woodend



LEADING HAND CARPENTRY

COMPLETE BUILDING SOLUTIONS

· quality workmanship · effective project management
· new homes · extensions · renovations




REGISTERED
Building Practitioner

Call 0439 360 896 or email
shannon@lhcarpentry.com.au

Living World Christian Church

Weekly Sunday Services are held at 10 am Romsey at 6pm, 7 Mitchell Court followed by an evening service at 6pm in Woodend's Community Centre.

Living World Christian church also offers before and after school care programs. Please call Elsie Parkinson, programme coordinator, on 0422 860 486 for further information. We also offer Mid-Week life groups for Children, Men & Women. All welcome

Submitted by Denise Eddy

Paul Groves
Mobile 0414 928 491

Computer Sales, Repairs & Consulting

Home and Office Networking
Onsite Repairs and Maintenance
New Computer Systems

paul@pcweirdness.com



The fencin' fella

- colorbond
- tubular
- timber
- steel picket
- pool

Mini Earthmoving Kanga Loaders

Attachments include:
rotary hoe, soil leveling bar, 4 in 1 bucket, trenchers, post hole diggers, tipper

SHAUN BARRON
MOB: 0407 232 900 or 5422 3488 AH

Kerri Hendriks
House cleaning
Looking for permanent work
Weekdays from 9am – 5pm
\$20 per hour
Minimum 3 hours cleaning
Please note no equipment or cleaning products supplied
Call Kerri 0403 685 060

The New Woodend Star aims to provide a voice for Woodend residents, Community groups and Businesses. Editorial and publicity for community events is free, and all other contributions or business advertisements are most welcome.



Is there room for a fire truck at your house?

The Woodend Fire Brigade recently attended a major house fire and had some significant difficulties gaining access to the property.

Whilst you should not expect a fire truck at your door to defend your home during a bushfire, there are times when there is not a bushfire and we may be called to your property.

Fire trucks are very large, heavy vehicles and it is therefore in your best interests to make sure your property has enough room for fire truck access, they need room to enter your driveway, somewhere to turn around and have easy access to a water supply.

Here are some important considerations:

- Make sure your property is clearly numbered at the entrance. This will make it easier to find you in a hurry, especially at night when it is dark.
- A CFA fire truck is 3 metres wide, 3.2 metres high and 7.5 metres long – can it get along your driveway?
- You need to allow 4 metres x 4 metres for adequate clearance.
- Can a fire truck easily get through the gates?
- Trim low hanging branches – this made access very difficult to the recent house fire, with branches actually causing some damage to the high trucks, and also slowing entry as drivers had to be careful and negotiate their way.
- Can the bridges and culverts on your land carry a 15 tonne fire truck?
- Is there room for a fire truck to turn around?
- Can fire trucks get within six metres of a dam, tank or pool to pick up water?
- Are gates and water supplies clearly marked?
- Can your tank offer direct connection with the CFA fire truck, If the water source is a below ground tank, it will need a roof hatch. If the tank is above ground it will need a specific connection (64mm in diameter and three threads per 25 mm).

For further information contact Captain Mick Christie on 0419 870 601 or 1st Lieutenant Mike Dornau on 0409 093 935. Or call the Woodend CFA on 5427 2356, visit the station in Urquhart Street or our website: www.woodendcfa.org.

The Woodend CFA is a volunteer emergency service, committed to Creating a Safer Community.

Submitted by 1st Lieutenant Mike Dornau, Woodend CFA

TRADE & SERVICE DIRECTORY

AIR CONDITIONING

SPLIT SYSTEMS INSTALLATION AND SALES

Efficient heating & cooling
For free quote, phone Dave
DW Air 0407 248 454

CHIROPRACTOR

Mark Brown
30 years experience

- Muscle realign & stretch techniques
- Gentle spine adjustments
- Elbows, wrists, kness, shoulders
- Headaches, migraines & athsma

Upstairs at Westpac Bank, 75 High St

Ph 5247 1456 or 0407 526 403

EXCAVATIONS

Cheap'n'Neat Excavations

Bobcat/Excavator/12m Tipper hlre

Post hole digger

Rubbish removal

Free Quotes

Contact Les 0418 556 634

METAL GATES



BVM METALCRAFT
Ben McKee
OLDWORLD & MODERN STYLE
GATES & FENCING
bvmmetalcraft@hotmail.com
04 222 88 768

MASSAGE



Woodend Massage & Natural Therapies
Massage Reiki
Bowen Ear Candling
Natalie Taranto 0402 534 983
Di Hall 0403 373 751
Please call us to make an appointment
70 High Street Woodend

PHYSIOTHERAPIST

Kyneton Physiotherapy ROBERT ROUSE

B. App. Sc. (Physio) Member A. Physio. Assoc.
Registered for Comcare, TAC, W/Cover,
Vet. Affairs

NO REFERRAL NECESSARY

74 High St. (Corner New St.) Kyneton

5422 2290

PSYCHOLOGIST

Sam Luxemburg Registered Psychologist

- Personal Counselling in Woodend & Romsey (Medicare rebate available)
 - Counselling Training
- Myers-Briggs personality testing

Phone: 0428 270 401
www.luxcollege.com.au

STONELAYING & PAVING



Stonemason & Paver
specialising in

- Retaining Walls
- Drystone Walls
- Stone Houses
- Paving
- Over 20 years' experience

Cameron Dunn

Ph (03) 5427 4778 Mob 0429 162 589

TRADE & SERVICE DIRECTORY

ANIMAL CARE



Macedon Ranges Pet Care
An alternative to kennels & catteries

A reliable home care service for pets & farm animals, servicing the Macedon Ranges since 2003
Phone Judy on 5427 1352

ANIMAL TRAPS

RatZapper
The electric chair for rats and mice


Fox/wild dog trap
BunnyBank
Feral cat traps
Possum traps



IT'S A TRAP!
CRITTER CONTROL

Ph. 5422 2856
www.ItsaTrap.com.au


CLEANING



Not enough hours in your day?
Need help managing your home?

Stephen Farrell
Personal Services

Very reasonable rates
Through out the Macedon Ranges
Phone 0419 526 275



DRESSMAKER

Beryl's Tailoring
DRESSMAKING, ALTERATIONS,
BRIDAL, EVENING & DAY WEAR,
LADIES AND MEN'S REPAIRS



Beryl Bachelor
QUALIFIED DRESSMAKER, NEWHAM
BY APPOINTMENT ONLY
MON TO FRI 9 - 5

5427 0568 0418 510 179

ELECTRICIAN

Macedon Ranges Electrics

REC 17836



5422 2182

Spilt System Air Conditioning
Television/Data/Antenna
All Electrical Installations
Contact Dan McCarthy 041754 2235
31 Redesdale Rd Kyneton



ELECTRICIAN



BROWN electrical services
REC 17439

All types of electrical work
Kyneton, Woodend & surrounding districts
"no job too big or small"

Travis Brown 0400 035 442
P: 5422 2568 F: 5422 6908

FIREWOOD

O'Callaghan Bros
REDGUM FIREWOOD SUPPLIERS

SPLIT RED GUM FIREWOOD

Excellent Quality Delivered Dirt Free
Ph 7 days
0407 036 800 0429 957 091

HOME INTERIORS

Present Well
HOME INTERIORS - WOODEND



- KITCHEN, LAUNDRY & BATHROOM CONCEPTS
- COLOUR CONSULTANCY
- LIVING ROOM & BEDROOM DECOR
- PREPARING A HOME FOR SALE

CALL DANIELLE FORMICA
ON 0400 664 231
www.presentwellhomeinteriors.com.au

HOME MAINTENANCE

Home maintenance & landscaping service including decking, pergolas, carpentry & painting.

Stuart 0409 150 629
AH 5427 2465

PAINTING



BD CROSBIE PAINTING
Ben T: 5427 2164
M: 0431 205 576

Household & Commercial Interiors & Exteriors
Painting, Staining & Oiling
Decking, Stairs & Hand Rails
Free Quotes

PAINTING

GEE'S Painting etc.



Call Steven
0402 079 482

PAINTING

Painting & decorating
Residential & commercial
Rendering
Prompt & professional



Rigoni Painting
Phone 0430 371 001



TAXI SERVICE



CROWN CABS
Your Local Taxi Service
Bookings: 9310 5422

TREE SERVICES



A&P Tree Services

- tree pruning / removal • stump removal
- tree planting / transplanting • rope & harness climbing
- confined space removal • fully insured

Professional commercial & residential tree maintenance
all work carried out by qualified arborist

Call Anthony 0417 059 969

TRENCHING

ASHBY'S TRENCHING

- Irrigation.
- Site levelling.
- Cable and pipe laying
- On tracks fit in small areas

Phone Mark 0427 973 360

SPORTS NEWS

Woodend Hasket Football Netball Club News

The Annual 'Ladies Day' will be staged at Gilbert Gordon Reserve for our Round 4 clash against Lancefield on the Mother's Day weekend.

We invite all mums, girlfriends, sisters, grandmothers, aunties and friends to join us at the local footy and the netball. It will be a great day against one of our traditional rivals, with plenty of extra activities around the ground all day.

The club will be raising funds for Breast Cancer Network Australia as an official event of Pink Footy & Netball Day across regional Victoria.

All of our footballers will be wearing pink socks, and our netballers playing with a special pink netball on the day to commemorate families in the Macedon Ranges who have, and are going through, their breast cancer journey.

We ask all punters to 'wear a touch of pink' to the footy for this fixture to show our support for the cause.

The club will be staging a Ladies Day Luncheon on the day with special activities, giveaways and guest speakers. For further information and ticket purchases please go to the Hawks website www.woodendhasketfnc.org or call Jock on 0419 308 501.

Keep an eye out for the upcoming *Hawk Comedy Night* posters and flyers around town too !!

Hawks Fixture

- May 7 WHFNC v Lancefield – (home)
- May 14 WHFNC v Macedon – (away)
- MAY 21 WHFNC v Wallan – (home)
- MAY 28 Bye

Submitted by Jock Allan – President – 0419 308 501



Guess what!!

It's time again for the Trentham-Woodend Vision Australia Auxillary "Humble Spud" Luncheon

To be held at the home of Proctors "Wahroonga" 718 Tylden Road Woodend on Saturday 14th May 2011 – noon
Guest artists – "Jimmy" & Wendy,- fabulous performers
Trading table – raffle – entry \$6.00
R.S.V.P. Norma 54271260 Allan 54272003 All Welcome

Bendigo Interstate Equestrian Championships

Two of our local teams came second and third place out of 45 teams from all over the state .

Kyneton secondary students Tahnee and Kelsey Pfeiffer, Skye Kennedy and Kyle Baboth came 2nd and 3rd by 2 points , the Newham and friends team of Lily and Eliza Cowburn, Jemma Reeves-Singles and Matthew Sievers.

They rode in a number of events including showjumping, dressage, games and showing.

Tahnee also won the Senior Highpoint rider. Riders are also members of Woodend, Kyneton and Riddells creek pony clubs.

Submitted by Melissa Cowburn



LANCEFIELD & ROMSEY WINE PRODUCERS PRESENT:

Vintage Showcase

Saturday May 21st & Sunday May 22nd

All within 10k of Lancefield!

The Lancefield/Romsey Vignerons love to party and really, we're bits of "show-offs".

Mind you, there is plenty to show-off about with the usual harvest of Trophies and Gold medals.

A Showcase Dinner at Cleveland

On Saturday 21nd May will be held from 6.30pm
Wines will be matched with the best of local produce.
\$90 per person all inclusive.

Dinner Bookings: Cleveland ph: 5429 9000

Come to the Party – We'll supply the goodies!

Cellar Doors Open

21nd & 22rd May 11.00 am-5.00 pm at
Braewattie, Cope Williams, Curly Flat, Farrowell, Lanes End, Midhill, MorganField, Portree, Stonemont, and Mt William wineries.