

# THE NEW WOODEND STAR



Circulation of 3190 throughout  
Woodend postal district, Newham, Heskett, Ashbourne,  
North Woodend, Hanging Rock, Carlsruhe, Cobaw.

**AN INITIATIVE OF THE ROTARY CLUB OF WOODEND**

February 2011

A Monthly Community Periodical

First Publication 1997

Volume Fifteen No 1

## Sustainability on display at Festival

The Macedon Ranges Sustainability Group will host its second annual Sustainable Living Festival at the Sustainability Hub, 47 Forest St, Woodend on Saturday 12th February. The Sustainable Living Festival is now a state-wide event and has been operating for 10 years drawing huge crowds to Federation Square.



*Home Produce Exchange and Permaculture Garden tours*

Last year more than 550 people visited the Woodend based Festival and undertook visits to nearby Sustainable Homes. Wiser for the experience, MRSG are expecting an even better event this year with local musicians including Brothers Johnstone performing throughout the day and activities for the kids.



*Plenty of activities for the Kids, including papermaking and tours of the gardens, including the chook pen*

A relaxed, low key and informative day is planned and it is hoped that visitors will find the presentations and the range of local sustainability goods and services of real value.

Key attractions at this year's Festival include tips about chooks and fruit tree care, alternative energy stalls and home retrofit products including solar hot water and double glazing.

Of course there will be lots of tasty and healthy local food available, but picnickers are also very welcome.

Entry is free for financial members of MRSG, \$5 for visitors, or \$8 for families. Attendees will be able to register for the Sustainable Homes tour the following Saturday 19th February.

Submitted by Ross Hansford

## Relay continues to help cancer crusade

The Lancefield-Macedon Ranges Relay For Life will be held on the weekend of March 5-6, 2011.

Since the regional event at Lancefield Park began in 2003 it has raised \$794,314 for the Cancer Council Victoria.

Relay For Life is the largest fundraising event in the world. In Australia, 150 communities participate and raise over \$14 million each year. The money is spent on cancer research, preventative education, support services and advocacy.

The Relay is an opportunity to celebrate the lives of cancer survivors, to remember those who have lost their lives to cancer, and to fight back by raising funds to support research and other activities of the Cancer Council Victoria.

It features ceremonies of celebration and remembrance, a full program of musical entertainment, games for children and a host of other activities. Teams are challenged to keep their baton moving around the track for 19 hours. Many camp overnight and a festive atmosphere is created.

Survivors and carers play a major role in the event and are warmly encouraged to participate in the opening lap tribute and attend a dedicated afternoon tea as well as be involved as much as they wish.

Registration for the Relay For Life is \$15 per person. A Team Information Session for the teams will be held on Tuesday, February 15 at the Laurie Green Pavilion, Lancefield Park, starting 7.30pm. RSVP to Melissa McCarthy, [tmac31@bigpond.net.au](mailto:tmac31@bigpond.net.au), 5429 5014 For more details about the Lancefield-Macedon Ranges event contact Melissa McCarthy on 0438 831 427 or [tmac31@bigpond.net.au](mailto:tmac31@bigpond.net.au). To register online or make a donation go to [www.relayforlife.org.au](http://www.relayforlife.org.au)

Submitted by Nadine Hartnett

## Woodexpo is coming...

Would you like an opportunity to showcase your community group or organisation to the growing Woodend community?

Then sign up for Woodexpo – an event hosted by the Woodend Neighbourhood House – specifically for not-for-profit and service organisations.

To be held on Saturday March 19, Woodexpo will enable groups to promote themselves and explain what they do to new and old residents alike.

Continued on page 2



## New Members

### The Rotary Club of Woodend

Put something back into this great community and be part of a worldwide organisation that helps build goodwill and peace allowing ordinary people to achieve extraordinary things and bring about exceptional change in the world.

Contact Brendan 5422 6442

## The New Woodend Star

An initiative of the Rotary Club of Woodend Inc.  
The Bank, 75 High Street, Woodend, Vic. 3442  
ABN 32 685 225 161 No. A0021518E

Layout & printing by Collier Office & Business Assist  
EMAIL articles preferred: sales@collierooffice.com.au

Circulation: 3190 copies throughout Woodend and district.

Disclaimer: Articles and comments published in this newspaper are the result of contributions from local groups and relevant news articles pertinent to the Woodend district. Neither the Rotary Club of Woodend Inc., The New Woodend Star nor the editorial team are liable for any mistakes, omissions, or misprints. It prints and makes no representation as to the truth or accuracy of any description, and accepts no liability for any loss suffered by any person who relies on any statement contained herein. The opinions expressed are not necessarily those of the editorial team. The committee reserves the right to omit, reject, cut, alter or otherwise re-work submitted articles to make them suitable.

Committee: Barry Napthine, Ivor Johnson, Claudia Green, Brendan Watters, Alexia Downie, Sue Macklin & Jane Watters

**Closing date for inclusion of articles or advertising for each issue is the 15th of the month prior to publication**

### Information for advertisers

All rates include GST & are priced per month. Prices for advertising 2011

Business card (55mm x 90mm) .....\$49 inc GST  
Trade Page .....\$35 inc GST  
Quarter page (90mm x 134mm) .....\$100 inc GST  
Half page (134mm x 190mm) .....\$185 inc GST  
Full page (190mm x 277mm) .....\$315 inc GST  
Insert (of your printed brochure) .....\$230 inc GST

Advertisers: Please note – it is in your interest to book and pay for a year in advance, as a 10% discount applies to any full year pre-paid booking. Any existing pre-paid ads will revert to the new rate on completion of the pre-paid period.

Advertising bookings to be made with Alexia Downie on 5427 3092 or sales@collierooffice.com.au. Accounts queries can be made to Sue on 5427 4089 during office hours or nws@johnsonwoodend.com.au Mail should be directed to: New Woodend Star, C/- The Bank, 75 High Street, Woodend 3442.

#### Woodend Star Publication Dates for 2011

February	Jan 31 <sup>st</sup>	July	June 27 <sup>th</sup>
March	Feb 28 <sup>th</sup>	August	August 1 <sup>st</sup>
April	March 28 <sup>th</sup>	September	August 29 <sup>th</sup>
May	May 2 <sup>nd</sup>	October	October 3 <sup>rd</sup>
June	May 30 <sup>th</sup>	November	October 24 <sup>th</sup>
	December	November	November 28 <sup>th</sup>

Changes to advertisements, new advertisements or cancellations must all be made by email or in writing. All advertisements will be placed and charged for until notified otherwise.

#### SUBSCRIBE TO THE NEW WOODEND STAR

Do you live outside the New Woodend Star distribution area? Be sure to receive your copy every month by subscribing. A yearly subscription of 11 issues is just \$31.90. Post to New Woodend Star, C/- The Bank, 75 High Street, Woodend 3442.

Name: \_\_\_\_\_

Address: \_\_\_\_\_

Phone: \_\_\_\_\_ Enclosed: Cheque/Money Order for \$31.90

### Continued from page 1

Your organisation will be allocated space in the grounds of the Woodend Neighbourhood House on Forest Street to set up a stall or display.

Entertainment, games and activities will be happening throughout the day.

For more information about how to get your organisation front and centre, attract new members or generally raise awareness about your services call or email Sarah Campbell at the Neighbourhood House on 5427 1845 / or coordinator@wnci.com.au

Submitted by Sue Peacock

## SOLAR DIRECT

- Solar Hot Water
- Grid Interactive Solar Systems
- Stand Alone Power Systems

Ph: 1300 55 77 98

Mobile: 0411 269 489

Lancefield

## NEIL J TURNER

- FENCES
- GATES
- IRON WORK
- STONEMWORK

NEIL@NEILTURNER.COM.AU

0409 285 256

## The Big Wet

Last year was by far the wettest on record for Woodend with over 1200mm recorded. The next wettest year was 1916, when 1160mm fell.

The long term average is about 800mm and over the last decade it was more like 700mm. The lowest annual rainfall was 397mm in 1938 and it preceded the devastating 1939 fires. Not surprisingly, 1982 was another very dry year with less than 500mm.

The late 2010 drenching came as quite a shock to us and caused the demise of many trees and garden plants. After all, it is a tough plant that can stand a decade of dry weather followed by the wettest year ever. A lot of the fallen trees were near waterways, where the soils had taken on a "mud-pie" consistency. Some strong wind funneling around the base of Mt. Macedon was all that was required to topple many of these trees. We lost quite a few exotic trees as well as many indigenous ones.

Perhaps we can take comfort in the fact that the town survived the floods quite well and those trees that survived are enjoying the new found moisture, even if they are a bit confused!

Submitted by Peter Yates



**Woodend Produce Store**  
**31 Brooke Street Woodend**  
**Ph. 0354272753**

**Poultry, Stock & Horse Feeds,  
 Hay, Grain, Chaff  
 Pet Food, Hardware, Fencing,  
 Electric Fencing, Tanks, Oils & Lubes,  
 Irrigation, Potting Mix, Fertilizer,  
 Herbicides & Much More!!  
 Elgas LPG Deliveries  
 We fill BBQ Gas Bottles**

**Mon – Fri 8.30 - 5.30**  
**Sat 8.30 - 12.30**

**Come in and see Wayne, Mick & Albert  
 for friendly service and expert  
 knowledge.**

**WOODEND**  
**Proud to be Pokie-free**

### Woodend Rainfall Report 2010

Each month we add the rainfall details and the year to date total. Our rainfall report shows, **2005, 2006 2007 2008 2009 and 2010** comparisons. Please note that your own rainfall readings may not exactly match these.

	2005	2006	2007	2008	2009	2010	
January	47.4	49.8	83.5	17.1	0.08*	54*	Jan
February	72.2	53.1	27.4	22.1	2.5*	71.5*	Feb
March	5.8	20.6	35.7	25.4	42.5*	121*	Mar
April	18.8	46.4	20.2	20.4	51*	45	April
May	13.6	58.8	95.7	43.7	30.5*	39	May
June	116.7	36.0	105.1	88.7	66.5*	98.5	June
July	76.9	91.6	83.3	112.5	76.5*	87.5	July
August	125.0	30.8	34.8	52.2	107.5*	148.5	Aug
Sept	55.2	50.6	49.8	42.0*	88.5*	97	Sept
Oct	49.8	5.2	12.1	13.0*	46*	154.5	Oct
Nov	72.4	13.0	91.0	67.2	99*	193	Nov
Dec	40.0	31.0	101.2	96.0*	60*	93	Dec
<b>YTD:</b>	<b>693.8</b>	<b>486.9</b>	<b>739.8</b>	<b>600.3</b>	<b>670.5</b>	<b>1202.5</b>	<b>YTD</b>

Figures for 2008, 2009 & 2010 include information from a different location indicated by \*.

For the year of **2010** there was rainfall of  
**1202.5mm**

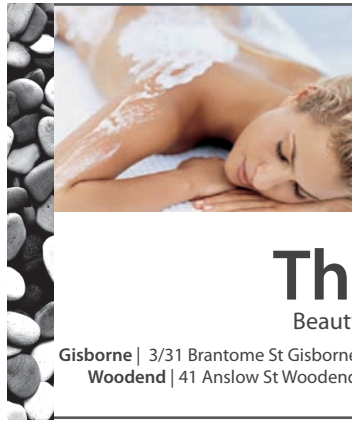
1 inch = 25.4 mm therefore the total year to date is 47.34 inches

Even though the end of December was dry, we did still exceed the all time record yearly rainfall in 2010.

The previous record was 1160mm in 1916.

*Feel sensational*  
 at The Spa

Our team of professional and passionate therapists can assist you with all of your needs... From essential waxing to purely indulgent facials, massages, body treatments and more, we are here 6 days a week.



**The Spa**  
 Beauty Therapy Centre

Gisborne | 3/31 Brantome St Gisborne 3437 | 03 5428 8800  
 Woodend | 41 Anslow St Woodend 3442 | 03 5427 3322  
 www.thespa.com.au



### Resonance String Orchestra Auditions 2011

Resonance String Orchestra is now auditioning new students for 2011. Resonance is an exciting music education initiative in the Macedon Ranges. It provides an outstanding program for string students of all ages who wish to extend their musicianship and ensemble skills, meet other string students and work with a team of professional tutors and visiting artists. To date, Resonance has enjoyed partnerships with the Freshwater Trio, Pollyphonics Choir and the Australian Youth Orchestra String Quartet.

This year, the orchestra will undertake a series of workshops and a performance with an artist from the Melbourne Symphony Orchestra's education program, among other activities.



The Resonance tutor team provides small group tutorials and whole orchestra tuition. All tutors are tertiary trained professional musicians with extensive experience as music educators. Resonance provides a warm and welcoming environment for its students.

The orchestra is open to dedicated string students of all ages. The minimum entry standard is AMEB First Grade or equivalent and we cater for students of up to 7th grade standard. Currently over 14 different primary and secondary schools are represented in the orchestra, as well as a number of adult students. We rehearse on Monday evenings during school term in Woodend and stage regular concerts.

New students wishing to audition for 2011 should contact Co-Directors of Music Emma Wade on 0418 392 390 or Heather Cummins 5426 2234.

Resonance is actively seeking partnerships to assist in it running these wonderful programs and concerts, and anyone interested is encouraged to contact Fund-Raising Officer/ PR Jane Walduck jane@overwood.org / 5427 3308.

Submitted by Jane Walduck

## Woodend Lions

### *Art Show Postponed Due To Storm Damage*

As most residents are aware, the Lions storage shed was severely damaged during the recent storms. Unfortunately, the worst affected portion of the shed was that where the Art Show equipment was stored. As a result the 2011 Art Show and Sale which was scheduled for the 12th, 13th and 14th of March has been postponed.

Lions would like to thank the Macedon Ranges Shire Council for their support and assistance to date and for clearing the tree from the remains of the shed.



Lions would also like to thank Marjorie Wilton for her generous donation towards the rebuilding of the shed.

### *Carols By Candlelight*

As in previous years, the annual Lions Carols by Candlelight evening was a great success. Because of the recent rain the grass area at the rear of the community centre was unable to be used for the event so the Carols moved indoors. The sausage sizzle was appreciated, the music was great and Santa was the highlight of the evening. Lions would like to thank all those organizations and individuals who gave their time and contributed their skills and talents to make the evening a success. Special thanks to Janelle Robbins, event co-coordinator and also to the Woodend community for continuing to support this local event.

### *Woodend Lions Village Markets*

Market Dates: Feb 20; Mar 20; Apr 17; May 15  
Market enquiries and bookings: Ailsa Howe 5427 2321  
Please Note: As for last year, the market will be automatically cancelled on days with a fire danger rating of extreme or catastrophic .

### *Lions Meetings*

Lions meetings are held at the Victoria Hotel at 7.30 pm on the second and fourth Wednesdays of the month. New members are always welcome. For enquiries or membership details, please phone one of the following: President: Wally Robbins, 5427 1342; Secretary: Robyn Robbins 5427 1342  
Treasurer: Terry Bowles 5427 0505

Submitted by Jillian Elwin

## *Walking with women through pregnancy, birth and early motherhood*

*Holistic Childbirth education and Hypnobirthing classes starting soon*

*birth*  
by nature

*Rachael McLeod*  
*Doula, Childbirth Educator,*  
*Hypnobirth and Reiki Practitioner*  
03 5427 1643 0415 288 438

## **Walking with women through pregnancy, birth and early motherhood**

### *Holistic Childbirth Education classes*

These classes will be relaxed, fun, and intimate. We will convey many possibilities of what birth can be, opening many avenues for couples to explore. Most importantly we will be giving tools to navigate this whole experience, wherever it may take you – with the aim to be educated, informed and conscious.

Rachael McLeod (Doula & Childbirth Educator) and Sandra Bowman (Midwife) are excited to launch these Saturday classes: February 12, May 21, August 13, November 12 at Tanja Fairweather Healing Centre, Kyneton - 9.15am - 5pm

### *Hypnobirthing Classes*

These classes are designed for women/couples who are pregnant and are looking to empower themselves with as many tools as possible in preparing for the birth of their baby. These classes will teach hypno-birthing as a skill to take into the birth as well as a tool to support them through the new parenting phase

*Cycle 1 - Feb 7, 14, 21, 28, Cycle 2 - March 7, 14, 21, 28*  
*Cycle 3 - May 2, 9, 16, 23, Cycle 4 - May 30, June 6, 13, 20*  
on Monday evenings 7pm-9pm at Earthforest Natural Healing Centre, Gisborne

Rachael also has a treatment room, and offers doula birth support, reiki, reflexology, earcandling and healing

For more information [www.birthbynature.com.au](http://www.birthbynature.com.au) / [rachael@birthbynature.com.au](mailto:rachael@birthbynature.com.au) / 0415288438



## **Financial services you can trust**

**Bob Nixon** - Authorised Representative,  
Total Financial Solutions Australia Pty Ltd

ABN 58 003 636 968 AFSL No.246545

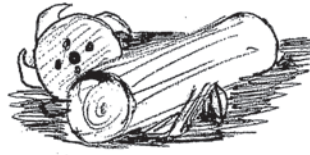
**PH: 5428 0123**

[www.nixonfinancialservices.com.au](http://www.nixonfinancialservices.com.au)

**Total Financial Solutions**  
  
*committed to your success*

# MADDEN'S PORTABLE SAWMILLING SERVICES & SALES

Turn your unwanted  
trees & logs into  
VALUABLE TIMBER



Call Craig on 0410 275 714

Save Your Wardrobe  
Save Your Pocket  
Save The World

*Saving  
grace*  
recycled fashion

**SALE  
50% OFF**

42 Anslow St Woodend T 0431 734 897

All news items, articles and community  
news columns must be received by 15th  
of each month.

## Woodend Auxiliary Kyneton Hospital

The Auxiliary's first meeting for the year will be on 10th February, 20 Sullivans Rd, commencing at 1.30 p.m. Business to be discussed includes planning our activities for the year.

An item for discussion will be what assistance we can give to the Hospital's next major fund raiser. This is an exciting event, an Open Garden Day at magnificent "Duneira" on Mount Macedon. "Duneira" is one of the most notable gardens on the Mount, gardens which are historically and culturally of great significance – and also of great beauty!

The Christmas raffle brought in over \$800, so thanks to all who took part. The prizewinners were very happy to receive such a gift in time for Christmas.

We're still looking for new, and if possible slightly younger, members for our Auxiliary, as many of those who have worked for it over so many years are nearing their "worn-out" dates. Phone me on 5427 1909 if you can help.

Submitted by Jo Clancy

## feeling FRAMED

bringing art to life

**Custom picture, artwork, tapestry  
and memorabilia framing,  
professionally and economically  
performed in-house.**

*A comprehensive range of Art supplies  
at very competitive prices.*

- Pencil & paint by numbers sets for youngsters
- Artist's quality brush and paint sets for the more experienced.
- Matt boards and mounts for artwork presentation.
- Books & magazines for the art enthusiast, or those just wanting a good read.

43 Anslow Street, Woodend – 5427 4455  
Next to the post boxes  
feelingframed@bigpond.com

## MACEDON RANGES CALISTHENICS COLLEGE

www.macedonrangescs.com

Phone: 0433 476 157

email shell\_on\_the\_beach@hotmail.com



Principal: Shelley Bertolini



**Grantra**  
HOME IMPROVEMENTS  
Specialising in Bathroom Renovations

PO Box 736, Woodend 3442  
**0418 175 877**  
www.grantrahomeimprovements.com.au

Master Builder REGISTERED Building Practitioner

**CHINKA STEEL CONVEYANCING  
(HEP Steel, Solicitor)  
FOR ALL YOUR  
PROPERTY SALES AND PURCHASES**

**RING CHINKA ON  
03 5427 2477**

**74 HIGH STREET WOODEND 3442**

## Turn off the TV and pick up a book this summer

Woodend Library says turn off the TV and pick up a book this summer.

The Summer Read is on again at the Goldfields Libraries and this year it's time to turn off the TV and pick up a great Victorian book over the summer months.

The annual Summer Read is a program of the State Library of Victoria and Public Libraries Network Victoria which celebrates the diversity of Victorian writing and encourages Victorians to enjoy and discuss books over summer. The Summer Read books are either written by a Victorian or set in Victoria, and all are free to borrow from participating public libraries throughout the state.

The 10 books in the Summer Read contain brilliant stories for a broad range of tastes - be it crime, literary fiction, short stories or memoir.

The 2010/11 Summer Read books are:

- *Animal Kingdom: A Crime Story* by Stephen Sewell. Victory Books. (Crime)
- *Below the Styx* by Michael Meehan. Allen & Unwin. (Literary fiction)
- *Book of Lost Threads* by Tess Evans. Allen & Unwin. (Fiction)
- *The Diggers Rest Hotel* by Geoffrey McGeachin. Viking. (Crime fiction)
- *Flying with Paper Wings* by Sandy Jeffs. Vulgar Press. (Memoir)



## The fencin' fella

- colorbond
- tubular
- timber
- steel picket
- pool

## Mini Earthmoving Kanga Loaders

**Attachments include:**  
rotary hoe, soil leveling bar, 4 in 1 bucket, trenchers, post hole diggers, tipper

## SHAUN BARRON

MOB: 0407 232 900 or 5422 3488 AH

- *Into the Woods: The Battle for Tasmania's Forests* by Anna Krien, Black Inc. (Non-fiction)
- *Piano Lessons* by Anna Goldsworthy, Black Inc. (Memoir)
- *Rocks in the Belly* by Jon Bauer, Scribe. (Literary fiction)
- *The Sleepers Almanac No. 6*, Anthology, Sleepers. (Literary short fiction)
- *Stealing Picasso* by Anson Cameron. Random House, Fiction

Book descriptions are available online at [slv.vic.gov.au/goto/summer-read](http://slv.vic.gov.au/goto/summer-read) or from the Goldfields at [www.ncgrl.vic.gov.au](http://www.ncgrl.vic.gov.au).

Information on other Summer activities and our kids program is also on the website.

Submitted by Lulu Cockram [woodend@ncgrl.vic.gov.au](mailto:woodend@ncgrl.vic.gov.au)

## LANGLEY McKIMMIE



Langley McKimmie Chartered Accountants has been growing the future of individuals and businesses in our community for more than a decade. As one of the regions largest Business Advisory firms, with more than 20 staff employed in Woodend, we have the resources to support your business.

We provide a comprehensive range of services to businesses, self managed superannuation funds and individuals.

### SUPPORTING YOUR BUSINESS

Our aim is to support business owners to grow their business and be successful. Our expert services and advice from which you and your business can benefit include:

- How to best structure your business activity
- Cashflow and financial management specific to your business
- Assistance when preparing to buy or sell a business
- Accessing small business concessions to greatly reduce business capital gains
- Ensuring timely and accurate compliance with taxation and other regulatory obligations
- Taxation planning and strategies for optimal results
- Business/family succession planning and restructure

Contact Andrew Marshall or Janine Orpwood on 5427 3790 for an initial consultation.

85 High Street, Woodend Vic 3442  
Website: [www.langleymckimmie.com.au](http://www.langleymckimmie.com.au)  
Email: [info@lmadvisors.com.au](mailto:info@lmadvisors.com.au)

# heritage water tanks

The Rural Tank Specialists

11,500 gal (52,000 litre) to 80,000 gal (358,800 litre)

ask about our NEW GUTTER TECHNOLOGY Patent pending

LIMITED TIME ONLY - BE QUICK

110,800ltr HGT110 \$7995\* installed

The all new Australian designed and manufactured gutter system enables you to collect up to 100% of your rain off your tank roof without compromising the capacity of your tank.

**Tank with gutter fitted**

EXTRA SAVED RAIN COLLECTED BY GUTTER SYSTEM

**Tank without gutter fitted**

WASTED

**heritage tanks**

FREECALL 1800 115 552

[www.heritagetanks.com.au](http://www.heritagetanks.com.au)

Travelling costs may be incurred extra if in remote regions. Installed Price includes GST. \* HGT price does not include gutter.



## Accountants, Advisors & Planners

### Office Locations:

111 High Street, Woodend Ph: 03 5427 8000

2/19 Bourke Street, Kilmore Ph: 03 5782 1273

email: [admin@riverwoodgroup.com.au](mailto:admin@riverwoodgroup.com.au)

website: [www.riverwoodgroup.com.au](http://www.riverwoodgroup.com.au)

Riverwood Group can offer a *Total Financial Solutions* package for you and your family. Take a look at some of the services we provide:

### Taxation

All your taxation requirements to suit individuals and small businesses.

### Investments to Create & Protect your Wealth

Managed Funds, Indexed Funds, margin Lending and more

### Planning for Retirement

Allocated Pensions, Centrelink Benefits and Payments

### Stockbroking

Recommended lists, broking facility available, share updates

### Superannuation & Rollovers

Advice, placements, Self-Managed Super Funds and Eligible Termination Payment Advice

### Other Services

Home & Investment Loans, Business Loans and Leasing, Income Protection, Life Insurance, Professional Indemnity, Estate Planning and more.

## Mini Maestros Comes To Macedon Ranges

The highly popular Mini Maestros will be commencing classes in Gisborne, Macedon, Sunbury and Woodend from February 2011! Mini Maestros provides music classes for babies and children, 6 months to 5 years of age.

Mini Maestros is a fun and educational music program, sing, dance and play games to introduce musical elements such as dynamics, harmony, rhythm, beat and tempo. Parents and grandparents also love to share quality time with the children in their Mini Maestros lessons.

Jo-Ann Irwin has completed music qualifications in performance, theory of music and piano at Trinity College of Music, London, as well as the Australian Guild of Music and Speech. She has comprehensive experience teaching music to young children, including teaching prep students for 2 years at New Gisborne Primary School. Jo-Ann commented, "I am extremely excited to bring the joy of music to young children in the Macedon Ranges. Mini Maestros is a fantastic program that is well loved by children and parents alike."

Jo-Ann's Mini Maestros classes will be held in Macedon on a Monday, Sunbury on a Wednesday, Woodend on a Thursday, Gisborne on a Friday and New Gisborne on a Saturday commencing in Term 1, 2011. To book, Jo-Ann can be contacted on 5426 4719, or class venues and times can be found at [www.minimaestros.com.au](http://www.minimaestros.com.au).

For further information please call Jo-Ann on 5426 4719

Submitted by Bruce Fethers



## LEADING HAND CARPENTRY

COMPLETE BUILDING SOLUTIONS

· quality workmanship · effective project management  
· new homes · extensions · renovations



REGISTERED  
Building Practitioner

Call 0439 360 896 or email  
[shannon@lhcarpentry.com.au](mailto:shannon@lhcarpentry.com.au)

## Count your community in the 2011 Census!

The Census of Population and Housing will take place on 9 August 2011. To make this happen the Australian Bureau of Statistics (ABS) will be recruiting around 43,000 people from across Australia to help count the nation.

The ABS is looking for community-minded people to fill Area Supervisor and Census Collector roles.

These are paid, part-time and casual positions with work starting in early/mid 2011. Ideal applicants will be great communicators, well organised and have good administration skills.

Some Census positions can be worked outside of normal business hours and may suit people looking for a temporary second job. Key Census recruitment times: Area Supervisors 12 February 2011, Census Collectors 9 April 2011

If you are interested in being an Area Supervisor or Collector, sign up now at [www.abs.gov.au/census](http://www.abs.gov.au/census). You will be sent information when applications open.

Submitted by Kerry Haby Macedon Ranges Shire Council




### The Magic of Music for your Child

Mini Maestros classes are commencing soon in Woodend, Macedon, New Gisborne, Gisborne and Sunbury during school terms.

Educate, energise and excite your child with the love of music through singing, dancing and playing instruments

Phone Jo on 0417 703 690 or visit [www.minimaestros.com.au](http://www.minimaestros.com.au)



## Paul Groves

Mobile 0414 928 491

### Computer Sales, Repairs & Consulting

Home and Office Networking  
Onsite Repairs and Maintenance  
New Computer Systems

[paul@pcweirdness.com](mailto:paul@pcweirdness.com)

## Rotary visits Woodend SES

Early in December members of the Rotary Club of Woodend visited the members of the Woodend SES at the station to see the equipment and facilities. Members were shown the vehicles and equipment used in the daily lives of the hard working SES volunteers. The local unit has been kept busy with the recent extreme weather conditions experienced in the Macedon Ranges shire. The unit is involved in assisting after storm damage, police and fire activities as well as road accident rescue.

The highlight of the visit was the presentation of \$5000 to the SES from the Rotary club. President Brendan Watters presented the cheque to the delight of all the SES members' present, led by Dean Gladman. Dean explained that the money would be put to good use in supporting the purchase of equipment.

It was another great night for the Rotarians as we shared supper with the SES members and enjoyed the social contact.

President Brendan Watters encourages any interested persons to come and visit Woodend Rotary Club on Thursday nights from 7 pm at the Victoria Hotel.

Submitted by Brendan Watters, Rotary President

**WOODEND  
NURSERY &  
GARDEN SUPPLIES  
OPEN 7 DAYS**

"LOCAL KNOWLEDGE FOR LOCAL CONDITIONS"  
**36 URQUHART ST, WOODEND**  
**Tel: 5427 1866 Mobile: 0428 271 866**

Full range of garden & landscape needs  
Rock, Soil, Sands, Sleepers  
Bobcat hire

## Do You Like Driving?

A very worthwhile role is played by our volunteer drivers at Macedon Ranges Health Services. The Carers Support Services funds us to provide essential transport to clients in the community. We need volunteers who are interested in driving locally or to Melbourne.

Volunteers bring skills and knowledge to this role and provide pleasant outings and socialisation to the residents and clients. Please consider this as something you might like to do to help our community. Please ring 5428 0446 for more information.

Submitted by Deriree Cohen, Macedon Ranges Health Services

## BEAUTY IN TOUCH

Classical Beauty Therapist – Kerry Robinson

- Deep Cleansing Facials ▪
- Waxing ▪ Manicures ▪ Pedicures ▪
- Eyelash tinting ▪

Please call 0412 479 901 for an appointment  
40A South Road, Woodend

## Peter Baker & Associates Barristers & Solicitors

**Family Law  
Criminal law  
General & Commercial Litigation**



**Peter Baker**      **Juliana Smith**      **Fran Medina**  
BSC & LLB (MONASH)      BM GDLP & LLB (UNE)      BA LLB

By Appointment at: **27 Urquhart St. Woodend**  
Head Office: 389 Hargreaves St, Bendigo

[info@peterbakerlaw.com.au](mailto:info@peterbakerlaw.com.au)

Ph: 5441 7300 Fax: 5442 4232

**FREE FIRST INTERVIEW\***

\*For advice only matters

# Now Available

**LARGE OFFICE SPACE  
AT**

**75 HIGH STREET**

**Fully Air Conditioned  
Natural Light  
Kitchen Facilities**

**CONTACT**

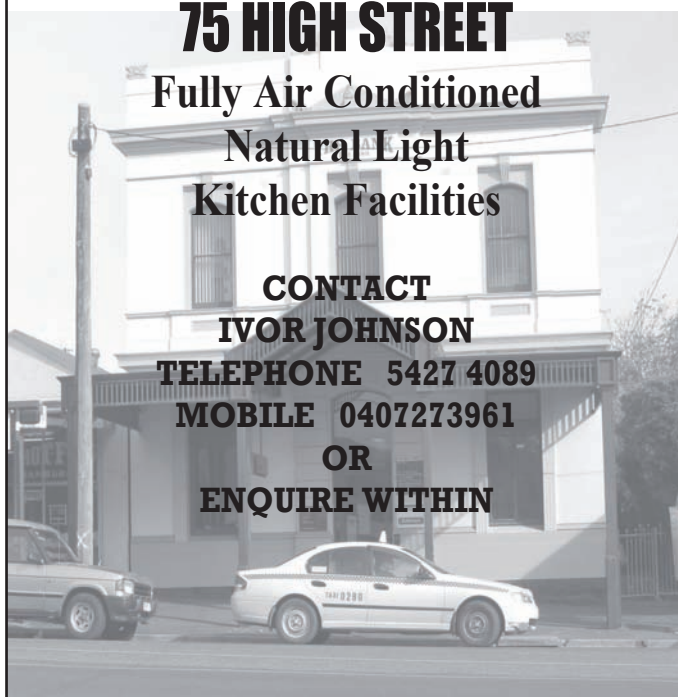
**IVOR JOHNSON**

**TELEPHONE 5427 4089**

**MOBILE 0407273961**

**OR**

**ENQUIRE WITHIN**





**Woodend Video Library**

65 High Street, Woodend

Ph: 54274011

For updates on new releases check out our Facebook Group Page

## Celebrations at Woodend Video

Woodend Video is celebrating its first anniversary under current management. We are passionate about meeting the home entertainment needs of the local community and as such have made a few changes.

We offer an ordering service where, if we can find it we will order it in for you. 'Done Dirt Cheap', a secure online ordering system that lists 25,000 titles in the current retail catalogue, is now available in store for you to access. All you need to do is create an account and you are ready to go. March 2011 will see the introduction of 'Get N2 Movies', a huge range of great DVD titles for you to buy at low prices.

Our website will go live in March, where you will be able to reserve your copy of the latest releases just by going to [www.networkvideowoodend.com.au](http://www.networkvideowoodend.com.au).

For special offers and a great way to keep up to date on all the latest movie releases, come in store and pick up your free copy of Chill Magazine or jump online and join the Network Movieclub "My Insider" at [www.networkvideo.com.au](http://www.networkvideo.com.au).

If you have any enquiries, we are only too happy to help; come and have a chat with any of our friendly staff.

Dont forget, at just \$6 for 6 weeklies, DVD rental is still an excellent way to keep your family entertained.

Myself and staff would like to thank our patrons for your support over the past year

Bronwyn Neil

This newspaper is supported by



**Collier Office**  
and Business Assist

Shop 5, 130 High Street  
Woodend  
5427 3092

### Feeling frustrated by your computer ?

- Complete PC Troubleshooting
- Virus Removal and Protection
- Hardware Repairs
- Custom Built Systems, Hardware and Software
- Basic Computer Training

Trust Colliers for all your home or business Computer and I.T. needs



## Landcare News

Well, we can't complain about too much rain this season, can we! Our little Creek has contributed its share to the water pouring down the Campaspe towards the Murray, and causing flooding on the way. Fortunately we didn't have any major problems locally. Quite a lot of trees have fallen in the last six months, grass and weeds of all kinds are flourishing as well as most of our plants. This all makes for problems for the Council's budget. However we are all very much aware of the terrible difficulties many people are still facing in other parts of Australia.

In order to help keep the weeds down a bit, we are having two working bees in February:

On Friday Feb 4th - a twilight bee near the Pyke St end of the track starting from 4.30, and going until around 7.30 when the sausage sizzle will be ready for all to share

Everyone is welcome, and there will be things the younger ones can do, as well as the somewhat older ones like me. Anyone with a brushcutter, a self-propelled slasher, a mattock, or a heavy hoe would find themselves with plenty of opportunity to use them.

On Sunday Feb 27th the venue will be on the Creek at the Southern end of Tennyson St. at our usual time of 9.30 a.m.. Again there's a lot to do in the way of weeding and cleaning up after the rain. Our usual excellent morning tea will help stoke up the energy levels.

We do need lots of help from our fellow-citizens - can you spare a little time on one or both of these days?

Phone Jo on 5427 1909, or email [rasbooks@netcon.net.au](mailto:rasbooks@netcon.net.au) for catering purposes.

Submitted by Jo Clancy

## WOODEND SELF STORAGE (Vic) Pty Ltd



- Store your business documents, stocks or furniture
- 7 day access
- 33 individual sheds
- Affordable prices
- Insurance available

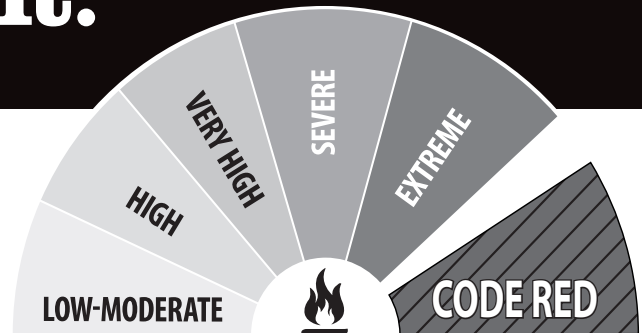
For any enquiries please contact  
**Leonie or Dennis Barker**  
on 5427 4175

# Know your trigger to act. And stick to it.

If you live in a high risk bushfire area, you need a Trigger to Act. And that trigger should be the Fire Danger Rating.

- The Fire Danger Rating predicts how a fire will behave if one starts and how difficult it would be to put out, so you need to stay constantly aware of the rating throughout the fire season.
- The trigger should be a part of a written Bushfire Survival Plan. The Plan should be understood by everyone in your household and take account of different situations, like days when kids are at school.
- If there's a chance of a fire, listen to ABC or commercial radio for updates, and put your Bushfire Survival Plan into action.
- If a Code Red is declared, the safest option is to leave the night before or early in the day. If you leave too late, you could die.

Don't wait to see what happens and don't wait for someone else to tell you what to do. Decide now what you will do on fire risk days - it could save your life. For more information, call **1800 240 667** or go to [www.cfa.vic.gov.au](http://www.cfa.vic.gov.au)



## FIRE DANGER RATING

**PREPARE. ACT. SURVIVE.**  
**FireReady** 

For more information contact: 1800 240 667 [www.cfa.vic.gov.au](http://www.cfa.vic.gov.au)

## Activities for all at Buffalo Stadium

### Kindergym

First term begins Friday 11th February  
From 9.30am– 10.30am for 1 – 3 year olds and 10.30am – 11.30am, 3 – 5 year olds. First terms special event is the “Teddy Bears Picnic” on March 4th. Bring along your favourite teddy bear and enjoy a fun filled day, Looking forward to seeing everyone!!

### Mamma's Can Tap 2

Always wanted to tap dance? This class is for adults who've always had a secret desire to learn  
Thursday - Woodend, 6.15 – 7.00pm. No concerts, No costumes, Just fun- Champagne and nibbles at the end of each term.

Start with a friend, make it part of your weekly exercise plan. Tap shoes are available for hire.

### Tiny Tackers Dance

Class Timetable for term 1- on Mondays,  
Tiny Tackers 9.15 – 10.15am; 4 years;  
10.20 – 10.50am, 2 year olds;  
11.00 – 12 noon 3 year olds.

### Studio Two

3.45 – 4.45pm, 5-6years; Junior Intermediate;  
4.45 – 5.45pm; 7-8 years; Intermediates,  
5.45 – 7.00pm, 8 years+ Advanced Intermediates

Due to numbers this class is only available in Woodend on Mondays..

### Tap Dance -

Intermediate Thursday 4.30 – 5.30pm, This is not a

beginner's class; To enrol for this class you must contact Miss Anita

### Hip Hop

Thursdays, 3.45-4.30pm 6-10 years; 5.30 – 6.15pm 10-14 years. Kids will perform in the Daffodil Parade, Kyneton in September.

### Date Programs Start Back in 2011

Strength for Health - 1st February  
Pilates - February., Volleyball - 3rd February.  
Ladies Tuesday night netball - 1st February,  
Tiny Tackers and Studio2 Dance classes - 31st January,  
Kindergym - 11th February  
Table Tennis - Mid February, Basketball - Sunday 6th February, Soccer - Friday 11th February,  
Junior Netball - 11th February, For information on the above programs Call the Buffalo Sports Stadium, Woodend 54 273 411 [buffalo@mrsc.vic.gov.au](mailto:buffalo@mrsc.vic.gov.au)

**Sand | Soil | Mulch | Pots | Pavers | Plants**  
**Water features | Fire wood | Wine barrels**  
**Hire Equipment | Synthetic turf | Sleepers**

 42 Nursery Road Macedon 3440 Victoria  
 Email [hello@nrgsupplies.com.au](mailto:hello@nrgsupplies.com.au)  
 Telephone 03 5426 2400 | Facsimile 03 5426 4972

**NURSERY ROAD**  
 GARDEN SUPPLIES

General open hours Monday–Friday 7.30–5pm,  
 Saturday–Sunday 9–5pm. Arrangements outside these hours can be made.

## Probus Woodend

The Combined Probus Club of Woodend & District Inc., invites retired & semi-retired professional & business people to join us.

Probus clubs are sponsored by Rotary Clubs to provide regular opportunities for retired & semi-retired men & women, who appreciate & value in their retirement, the opportunity to meet others in similar circumstances, to keep their mind active, expand their interests & enjoy the fellowship of new friends with similar interests & background.

The Woodend Probus Club meets on the first Thursday of each month from 10am till 12 noon at the Woodend Community Centre. Please feel welcome to attend one of our meetings. Probus Clubs are free from the constraints & obligations of service clubs. For further information 'phone 5427 2483.

Submitted by R.Hamilton, Secretary

## Rasputin's

wine bar • restaurant • gallery

Thursday to Sunday

**5426 3700**

[info@rasputinbar.com.au](mailto:info@rasputinbar.com.au)

**40 Victoria Street, Macedon**

## KYNETON EQUIPMENT & PARTY HIRE

**FOR ALL YOUR HIRING NEEDS**

8-12 BEAUCHAMP ST PHONE (03) 5422 2311  
KYNETON VIC 3444 FAX (03) 5422 2930

Email: [kynhire@bigpond.net.au](mailto:kynhire@bigpond.net.au)  
website: [www.kynetonhire.com.au](http://www.kynetonhire.com.au)

## Belle Museette

### *Fabulous France Music*

Take a trip through the golden age of French musette and chanson with Belle Museette, specialising in the music of Paris from the 1930's and 40's. From the traditional waltz through to tango, gypsy swing and chanson, this is music to inspire dancing and reminiscing!

Belle Museette, have played Bastille Day balls, The Boite World Music Cafe, local restaurants (like the musette groups of old), private functions and the Famous Speigeltent, during the Melbourne Festival as part of the French community's presentation to the people of Melbourne.

Friday 18th February at Gisborne Mechanics Institute, 8.00pm to 9.50pm. Tickets are \$20, \$17.50 Concession, children under 15 free (have to be accompanied by a paid adult) for further information call 1300 88 88 02.



## Tony's Practice

**5427 4344**

*24 hour emergency care 365 days*

**Caring for all small animals,  
alpaca, equine & farm animals**

**TONY'S PRACTICE IS MOVING IN MARCH/APRIL 2011**

**We look forward to sharing our new Veterinary Centre with you  
on the corner of Wood & Brooke Streets Woodend**

**Come and join us with your new puppy at Puppy School for lots of fun & socialisation  
Classes in January and February on Thursday nights with Jenny and Panda**

We also offer comprehensive services in small animal, alpaca, equine and farm animal care. We have state of the art diagnostic facilities including digital x-ray and ultrasound within the clinic and for property visits and blood machine for immediate results.

12 ANSLOW STREET WOODEND 3442 p 5427 4344 f 5427 4355 e [info@tonyspractice.com.au](mailto:info@tonyspractice.com.au)



## Cultural Diversity Week 2011

### Tibetan Monks to visit Woodend

The Cultural Development Unit is pleased to announce the receipt of a grant from the Victorian Multicultural Commission to present a program celebrating cultural and religious diversity. We welcome the opportunity to invite to our Shire Tenzin Choegyal and Monks from Tibet in their "Compassionate Mandala" Tour.

Tenzin Choegyal's voice and musical talents are uniquely beautiful as he draws on his traditional Tibetan roots. Since his world music debut in 1997 in Australia, Tenzin's cantering rhythms, soaring vocals and exquisite flute solos have enchanted audiences around the globe. Tenzin also raises aids through his tours for Tibetan monks in exile as well as the Tibetan Children's Village, the school for Tibetan refugee children that he attended as a child.

Tenzin has made his mark on the world music circuit performing at such events as Woodford Folk Festival, Port Fairy Folk Festival, the National Folk Festival, Daylesford Singers Festival, Brisbane Multicultural Festival and Womadelaide.

Tenzin plays the dranyen (long necked lute), lingbu (transverse flute) and various ritual objects and is well-known for his extraordinary vocal ability. He has recently received the BEMAC World Music Award at the 2008 Q Music Awards for his "White Crane Song".

Tenzin Choegyal and the Monks will be based at Woodend Community Centre during Cultural Diversity Week from Wednesday 23rd March 2011 to Sunday 27th March 2011 to host workshops in creative arts including Sand Mandala creation, Harmonic Chanting, Tibetan Singing, Cultural Workshops, Guided Mediations, Tibetan Art of Divination and the Compassionate Mandala – Sacred Dance Sacred Music Concert.

Our event aims to promote the common human values of kindness and compassion through cross cultural connections, using the arts as its vehicle.

Everyone in the community will have the opportunity to be involved in our Cultural Diversity Week Celebrations; schools, community groups, aged care facilities, community choirs, religious groups, singing and dance schools and sport recreation and wellbeing groups.

For further information, or to register interest in being involved please contact Andrea MacDonald, Projects Co-ordinator, Cultural Development Unit Macedon Ranges Shire Council Ph. (03) 54220 394.

Submitted by Andrea MacDonald, Macedon Ranges Shire Council



kitchen cook table home  
Blue Orange Concepts

Take an extra 10% off  
Knife Blocks this month

Shop 2 130 High Street, Woodend 3442  
Telephone 03 5427 4500

## Buda Historic Home and Garden

A property of national significance. Home of the noted Gold and Silversmith ERNEST LEVINY and his family from 1863 to 1981, featuring authentic furnishings, arts and crafts collection, significant heritage garden and grounds. Nursery selling drought-hardy plants, many propagated from the garden.



Historic HOME & GARDEN

Wednesday - Saturday 12 to 5pm  
Sunday 10am to 5pm  
Groups by appointment  
T: 5472 1032  
E: admin@budacastlemaine.org  
42 Hunter Street, Castlemaine



FAIRHURST CONVEYANCING  
and Secretarial Services

For all your  
**Property Transfers**  
Ring Sue Fairhurst on  
**5427 2382**  
27 Urquhart Street, Woodend  
MVCA & AIC

## Equipment for Hire

The Rotary Club of Woodend offers the following equipment for hire. to locals and other community groups

- Soundart PA System \$250
- Data Projector and Screen set \$100
- Marquee \$50
- Chairs (4) and Tables (2) \$20

Rates are inclusive of 24 hour period. Discounted options available for long term rates A security deposit of \$400 is required. Please contact Eb Friedrich 5427 1629

## Your Memories to DVD

- \* 8 mm/16 mm Films
- \* Mini DV
- \* Compact VHS
- \* VHS

Discount for Quantity



**Top Hat Productions**  
Ph: 5422 3930

# COLENSO

After a year as the 'new' owners of a Woodend treasure,  
we offer a warm and heartfelt thankyou to our customers, staff and suppliers for  
what was a wonderful 2010.

With many inquiries and requests  
for extended hours,  
beginning February 7, 2011  
we will open Mondays and Tuesdays  
during the day,  
PLUS Friday evenings for drinks,  
bites, and a casual dinner menu.

## HOURS

monday	8.30	-	4
tuesday	8.30	-	4
wednesday	8.30	-	4
thursday	8.30	-	4
friday	8.30	-	9
saturday	8.30	-	9

We will continue with our successful Saturday evening set dinner menus  
with reservations beginning at 6.30.

For menu details please check our blackboards or visit our website

[www.colenso.com.au](http://www.colenso.com.au)



54272007

# Eating Out, In & Around Woodend

## HOLGATE'S BAR & RESTAURANT

Microbrewery Hotel with cosy open fires, stained glass windows and friendly atmosphere. Award winning local beer. Delicious meals including house-made bread, pasta and desserts. Function room and stylish accommodation now available. Open for Lunch Tues-Sun. Open for Dinner 7 Days

79 High Street, Woodend  
Ph 03 5427 2510



**Bistro**  
Open 7 days lunch & Dinner  
Daily Blackboard Specials

**Bar**  
Counter meals daily  
Fridays Tradesmans Lunch-\$14 pot & parma  
TAB & Sky Channel

**Specials**  
\*Tuesday Locals Day menu \$17.50  
with glass house wine, lunch & dinner.  
\*Pensioner & Seniors card holder Lunch menu  
from \$12.50 Monday to Thursday (Lunch only)

Drive Through Bottle Shop  
Open 7 days

**Bookings 5427 2721**  
67 High Street, Woodend  
www.vicwoodend.com.au  
info@vicwoodend.com.au

CAMPASPE HOUSE  
A COUNTRY HOUSE HOTEL & RESTAURANT

CELEBRATE OUR MAD HATTER'S  
TEA PARTY  
in Campaspe's Edna Walling Gardens  
MONDAY 14TH MARCH 2011

\$65 per person includes a glass of sparkling wine, high tea  
and an afternoon of jovial entertainment and fun.

Reservations essential

GOLDIES LANE WOODEND 03 5427 2273  
reservations@campaspehouse.com.au www.campaspehouse.com.au



Award winning Bread,  
Pies & Cakes

Shop 1 & 2, 115 High St, Woodend  
Open daily from 7am  
54272486

[www.bourkies.com.au](http://www.bourkies.com.au)

## Harvest Picnic at Hanging Rock

The Age Harvest Picnic at Hanging Rock is a delicious day out for family, friends and fellow food lovers. Over 100 small food and wine producers gather at the base of Hanging Rock to sample and sell their fine array of tasty goods.

With 100 small producers from across the state gathering at the base of Hanging Rock to showcase, sample and sell their delicious provisions, there's no shortage of choice. You'll find farm gate produce, extra virgin olive oils, jams, relishes, and an abundance of sweet treats. Artisan breads and cheeses, and all things organic perfectly complemented with craft-brewed ales and ciders, boutique wines and locally roasted coffee.

The Age Harvest Picnic at Hanging Rock truly is a celebration of Victoria's bountiful harvest. Sip and savour your way round every marquee. Join chefs Stefano de Pieri,

Jake Nicolson and Travis McAuley for cooking demonstrations and tips. Or roll out your picnic rug under the gum trees with family and friends while Vika and Linda Bull, Jugularity and Combo la Revelacion take centre stage. The event is organised by the Harvest Picnic Foundation - a not-for-profit organisation, whose aim is to promote Victorian produce. and is Victoria's biggest one day food and wine event. The Age Harvest Picnic at Hanging Rock is held on the Sunday 27th February.

Please visit The Harvest Picnic's website for more information [www.harvestpicnic.com.au](http://www.harvestpicnic.com.au)

## Not Just Fudge

126 High Street, Woodend

Home-made Fudge,  
Natural Ice Cream, Coffee, Tea, Herbal Tea, Milk &  
Thick Shakes, Cakes, Sandwiches,  
Freshly Squeezed Fruit & Vegetable Juices

Ph: 5427 2210

Fax: 5427 2880

# Eating Out, In & Around Woodend



**The Village Larder**

**Now Open 7 Days  
8am - 4pm!**

81 High St, Woodend  
Phone 5427 3399  
[info@thevillagelarder.com.au](mailto:info@thevillagelarder.com.au)  
[www.thevillagelarder.com.au](http://www.thevillagelarder.com.au)

Specialising in;  
Gluten Free Cakes  
Petite Fours (great for functions)  
Cakes for all occasions  
Wholesale cakes for Cafes & Restaurants

**Pie'ce De Resistance**

Joe and John Tullio      [www.mrcakes.com.au](http://www.mrcakes.com.au)  
74 East Street Woodend      5427 3960

\* FAB FOOD  
\* FUNCTIONS & CATERING  
BY ARRANGEMENT  
Bookings Essential  
BYO wine only  
Light Snacks Mondays  
Free entry for  
Macedon Ranges residents

**Tel: 5427 0295**

Large range of Australian Gifts

**Hanging  
Rock  
Café &  
Country  
House**

Space is still available in the  
Eating Out pages. A great way to let your  
customers know about your new menu or  
specials. Advertisements start at \$49

**Zarby's**  
**Wine bar & bistro**

Open Wednesday - Saturday  
10am till late

84-88 High Street, Woodend    P: 5427 4414



Frank & Rose Gorlitz

Open 7 Days  
8am till late  
breakfast, lunch & dinner

For Bookings      **Ph/Fax 5427 4447**  
**Mobile 0488 423 537**  
"Where Lovers of Food Eat"



**Red Door Cafe**  
At the Roadhouse

Open Early 7 Days  
Dinner Thur, Fri & Sat - Eat in or Take Away

**More than just a Roadhouse....  
Great Food & Great Coffee!**

Carolyn & Steve Green      313 Black Forest Drive,  
Phone 5426 4460      Macedon Vic 3440



**MOUNT MACEDON  
WINERY**

enjoy the warmth of the sun on our terrace decking  
with a glass or two of our beautiful estate grown wine

open Saturday & Sunday 11am-5pm  
433 Bawden (Douglas) Road, Woodend / Mt Macedon  
[www.mountmacedonwinery.com.au](http://www.mountmacedonwinery.com.au)  
**5427 2735**

This page is proudly sponsored by the  
**19th HOLE SHOPPING CENTRE**

cut out this calendar & stick on your fridge!



**Upcoming Events**

**February**

- 4th Woodend RSL Friday night dinners
- 5th Picnic at Hanging Rock Outdoor Screening
- 12th Sustainability on display
- 13th Hanging Rock Car club Show
- 15th Relay for Life – Information Session
- 18th Belle Museette – Fabulous France Music
- 18th Woodend RSL Friday night dinners
- 19th Sustainable Homes Tour
- 20th Woodend Lions Village Market
- 25th – 26th The Australian Shakespeare Company at Duneira
- 27th Harvest Picnic at Hanging Rock

**March**

- 2nd Free Strategic Planning Session
- 5-6th Relay for Life in Lancefield
- 12th, - 14th Woodend Lions Art Show POSTPONED
- 14th Giant Trash & Treasure Sale, Newham
- 20th Woodend Lions Village Market
- 23rd – 27th Cultural Diversity Week 2011

**May**

- 1st End of fire restrictions

**August**

- 9th The Census of Population and Housing

All Community groups and events are invited to submit their dates for listing on the Community events calendar

**COMMUNITY GROUPS CONTACT DETAILS**

- Alcoholics Anonymous Friday night, Cobaw Community Centre 0409 131 144
- Australian Breastfeeding Association, Heather 5427 2398
- Cobaw Thursday Walking Group 5427 3340
- Daylight Masonic Lodge, 5427 2480
- 1st Woodend Scout Group, 5427 4968, Jenny
- Friends of Macedon Ranges Library, Chris/Bill 5427 2469
- Garden Club 5422 6062 / 5427 3340
- Living Word Christian Church 5429 6327
- Historical Society, Courthouse, 5427 2523
- Macedon Ranges & District Motor Club, 10 Webb Cres, New Gisborne 1st Wednesday each month 8pm
- Macedon Ranges Animal Aid, Buffalo Sports Stadium, 5427 1752
- Macedon Ranges Bridge Club, 5420 7595
- Macedon Ranges Families of Children with Disabilities Support Group, 5427 3365
- Macedon Ranges Residents Assc. 5427 1481 or 5427 2651
- Macedon Ranges Communicators (ITC), 5427 2669
- Macedon Ranges Photographic Society, 1st Tues of month, Ron Mathews 5427 3284
- Probus, 5427 2003
- R.S.L., Anslow Street 5427 3122
- Red Cross, 5427 1260
- Rotary Club of Woodend, meetings weekly at Vic Hotel Thursdays 6.45pm, Brendan 5422 6442
- St. Mary's Guild, 11am, 4th Wednesday of month
- St. Mary's Street Stall, 9-12 noon outside Woodend Newsagency (2nd Sat of the month)
- Woodend Landcare Group, Jo 5427 1909 or Doug 5427 0666, 3rd Tues Meeting, 4th Sunday Working Bee
- Woodend Angling Club, RSL Hall, 5427 2395
- Woodend Art Group, Railway Station, 5422 6172 or 5427 1659
- Woodend Business & Tourism Association, Cori 5427 3434, 2nd Tues of month (BATA)
- Woodend Hanging Rock Petanque Club, Hanging Rock Reserve Ph: 5427 2477
- Woodend Lions Club, Meetings 2nd/4th Wednesday each month, ph Robyn Roberts 5427 1342
- Woodend Model Railway Club, Buffalo Stadium
- Woodend Pony Club, 5427 2793
- Woodend Senior Citizens Club, Comm. Centre
- Woodend SES Training Nights, Urquhart St
- Woodend Winter Arts Festival Inc., Jacky 5427 1560

- Ian Marks Liquor**  
1300 627 575 ext 24 &34
- Blue Orange Concepts: homeware**  
5427 4500
- Woodend Pizza & Pasta**  
5427 3777
- Coles Supermarket**  
5427 2377
- Collier Office & Business Assist and Woodend Copy Centre**  
5427 3092
- Pets Haven**  
5427 3603
- Mitre-10 Woodend Hardware**  
5427 2314
- BP Woodend**  
5427 2248
- Target Country**  
5427 4366
- Macedon Ranges Travel Services**  
5427 4777
- Kosmac & Clemens: optometrists**  
5427 4577
- Woodend Cycles**  
5427 2662
- Salvation Army Family Store**  
5427 4421
- Loose Change Bargains**  
5427 4466
- Bodywise Underwear**  
1300 66 17 66
- Australia Post**  
5427 2600
- Feeling Framed**  
5427 4455
- The Spa Beauty Therapy Centre**  
5427 3322
- HIGH STREET SHOPS**
- Color Me Cooper**  
5427 1454
- Chelleon For Hair**  
5427 3246
- Not Just Fudge**  
5427 2210
- RT Edgar Real Estate**  
5427 1222
- Woodend Bakery Cafe**  
5427 3434

PLEASE SEND US YOUR FUTURE DATES

**ADVANCED EQUINE DENTISTRY**

Dr Shannon Lee BVSc

0418 598 621

we come to YOU!

Winner 2009 Macedon Ranges Business Excellence Awards for Young Business Person & Professional Services categories

Mobile services for Macedon Ranges

[www.advancedequinedentistry.com.au](http://www.advancedequinedentistry.com.au)

**SPANISH**

Learn from a *native* Spanish speaking teacher

**courses starting NOW**

**beginners to advanced**

Also short courses for travellers

Nelly Molina - LOTE qualified

[nellymolina@live.com.au](mailto:nellymolina@live.com.au) - 0421 363 939

## Newham After Harvest Workshops

This will be a smaller follow up event to the very successful 2010 Newham Sustainability Expo.

The workshops will comprise a number of home based 'cottage techniques' for dealing with local products. The essential idea is to emphasize low food miles, self sufficiency and 'do it yourself' activities.

The sort of activities suggested and there are many more include: Making yoghurt, Cheese making, Home brewing/wine making, Bees and honey production, Jams and preserves, Bread making, Home diesel fuel production and Basketry

As a venue, we are proposing the Newham Hall subject to availability on a yet to be decided date (April). Please contact Fran 5427 0661 or Penny 5427 0795 if you are interested in becoming involved on an organising committee or are willing to run a workshop.

This proposal is supported by the Newham & District Landcare Group.

Submitted by Frances Spain

*Lachlan Fleming*

**CONSTRUCTIONS P/L**

SERVICING THE MACEDON RANGES

**0401 499 898**

**EXTENSIONS  
RENOVATIONS  
NEW HOMES**

REGISTERED Building Practitioner

Master Builder

Kirsty Nuttall

**MACEDON RANGES  
PICTURE FRAMING SERVICE**

By appointment only  
Phone/Fax: 5427 3511  
Mobile: 0417 337 857

## Newham Hall happenings

The Hall Committee is pleased to keep our community informed through "The Woodend Star" as there are many people who don't hear of our goings on through other sources.

Currently we are busy finishing the jobs left over from our build. Stage 1 of the gabion retaining wall, interior finishing and tree planting have been done and hall usage has increased which we are very pleased about. If you are interested in booking the venue, we are only too happy to show you - contact: Val Sutton 54 270 387 or Ian Miller 54 270 478 .

Thank you to John Ellis of Hanging Rock Winery for his generous donation to our Christmas Hamper, it was very successful and won by a Kyneton family. Newham Garden Club also made a generous donation from their plant sale - thank you to Fran and Jenny and all the helpers. They did a fantastic job and raised an enormous amount of money for the community.

Our Major Fundraiser - Giant Trash & Treasure Sale will be on Saturday 19th March. If you are having a clean out of house/sheds we would love to have what you don't want!

Drop-off day - Monday 14th March [Labor Day] from 8.30 until 12noon. If you can't wait to get rid of your stuff then ring Susan 54 270 478, Colleen 54 270 336, Sally 54 22 68 45, Val 54 270 387 bring it to the hall and we will organise it from there.

There will be other things happening on the day - further details next month.

The Positive Ageing Advisory Committee to MRSC will be coming to the Hall on Tuesday March 8th to hear what the residents of Newham think Council could do to help them as they get older - services etc. - Lunch is provided & posters will go up with details

Keep an eye out for our Seasonal Dinner in April at the Hall.

Submitted by Sally Stabback

## Men Needed!

Macedon Ranges Health Services is currently looking for men who would enjoy the experience of assisting clients in the Men's Shed on Tuesday. If you have an interest in woodwork, and would like to discuss the possibility of volunteering with us please phone 5428 0346 and have a chat with our Volunteer Care Coordinator.

Submitted by Desirée Cohen, Macedon Ranges Health Services

**ENJOY YOUR PRECIOUS WEEKENDS**

**TERRY'S GROUND CREW  
MOWING & MAINTENANCE**

**0400 909 303**

**MACEDON RANGES VOUCHERS ACCEPTED  
GET READY FOR SPRING AND SUMMER**

**SMALL ACREAGE SPECIALISTS**

**Woodend Neighbourhood House**

There are changes afoot here at the Neighbourhood Centre. The Committee of Management voted to change our name from Woodend Neighbourhood Centre to Woodend Neighbourhood House. Many people call us the House already and there has been much confusion for new visitors to both the Community Centre and us, so hopefully this change will be easier for everyone.

This month kicks off our new program for 2011 and you will find many of your favourite classes, reintroduction of old classes and lots of new opportunities to try something different.

New classes this term include clay modelling of a human head, illumination of manuscripts, build a small mosaic house, working with the media, connecting to angels, social media for business or pleasure, scrapbooking, how to set up your own small business, systemic awareness in business and make your own teddy bear.

Our fitness classes return and we welcome back April who runs our Pilates classes. There are Zumba classes, yoga, belly dancing, Tai Chi & Qi gong, strong women live longer - fitness for seniors and cycling. Our walking group is in recess, so if you would like to start a group or become part of a group let us know suitable days and times and if a few people are interested we can start it up again.

We offer a range of activities for children including drama with Paul Canlan, Creative Daze with Saskia Post and French conversation with Jean Pierre.

Other regular classes include First Aid, recreational boat & powered water craft training, person centred counselling, jewellery making, creative writing, quilting & stitching, digital photography classes, mountain light & healing essences, glass fusing & mosaic, French and Spanish conversation classes and basic car maintenance. Our computer classes are varied and will include beginners, computers for business, QuickBooks, MYOB, Publisher, advanced classes, Skype, Social media as well as buying & selling on EBay.

The Woodend Neighbourhood House continues to run to benefit the local community by offering cost effective courses, meeting spaces and facilities. We have a part time Coordinator, Sarah who is assisted by Renee the Administration Officer. The remainder of the work and support is undertaken by volunteers. If you have skills and time to spare why not consider volunteering here. If you would like to know more about joining our team please make an appointment to come and meet me.

For further details about the House and classes call 5427 1845 or visit our website [www.wnci.websyte.com.au](http://www.wnci.websyte.com.au)

Submitted by Sarah Campbell Coordinator

Time to get  
**ORGANISED**

**TAKE 20% OFF**

document wallets



folders



expanding files

display books



**Collier Office**  
and Business Assist

Shop 5, 130 High St, Woodend. P: 5427 3209 e: [sales@collieroffice.com.au](mailto:sales@collieroffice.com.au)

SALE ENDS SATURDAY 26<sup>TH</sup> FEBRUARY

## St. Mary's Church News

### Very Wet Fete!

St. Mary's Anglican Church held their 2010 annual Fete on a very rainy November day. The heavens opened in the days prior, and did not stop! Ever optimistic though, we pressed on, and were grateful to see many local people out and about to support the Fete. There was also wonderful generosity this year from many local businesses (too many to list here!), whose donations meant that the Fete was still a success despite the terrible weather and reduced crowds.

By lunchtime, the mud had become too deep and everything - and everyone - was wet through, so we finished early with our mega-Auction inside the Church itself.

Raffle winners were: 1st Prize - Unita Cox, 2nd - Marg Wilton, 3rd - Lauren Hildebrandt. A very big thank you to everyone who supported our Church.

### Guild Knit-A-Square Project

The St. Mary's Guild and friends have had an ongoing project since 2005, "Knit-A-Square for the Homeless". Regular gatherings are held where many thousands of squares have been knitted and sewn together to create over 200 blankets, which are then sent off to the Salvation Army. The knitters often wonder where they end up, hoping that all the hard work is being appreciated and keeping someone warm, somewhere. The Guild was thrilled to receive a letter from the Salvation Army recently, part of which read, "...*They have brightened the day of a number of people whom I see personally here at The Salvation Army.....they were all received with many thanks and gratitude and given with the love that they were knitted with.*" So, a big thank you to all in the community who have knitted squares for this project, It is lovely to know the blankets are being used and appreciated, and the project will continue so long as there are willing knitters in our community.

Submitted by Kelly Clune

## Meta Massage

SPORTS/REMEDIAL MASSAGE, SHIATSU, REIKI  
Raymond White

Telephone 0411 268 336

for an appointment

18 years experience • Chronic and acute conditions  
Sports injuries • Rehab work



REGISTERED BUILDING PRACTITIONER (Est. 1992)

### SPECIALISING IN:

- Renovations & Specialist Carpentry Work
- Heritage Building
- Pergolas & Decks
- All General Home Maintenance
- Prompt & Reliable Service
- 10 years based in macedon ranges & surrounds

For a free estimate phone Darren - 0438 756 231/5427 2215

ADVERTISEMENT

# Donna Petrovich MP

State Member of Parliament for Northern Victoria Region

Parliamentary Secretary for Sustainability and Environment

## Working for the Macedon Ranges Community



Your Country Voice

5782 2011

84 Sydney Street, Kilmore

donna.petrovich@parliament.vic.gov.au

Authorised by D Petrovich, 84 Sydney Street, Kilmore.

All news items, articles and community news columns must be received by 15th of each month.



## WOODEND & DISTRICT PODIATRY

### John F. Shapland

Resident Practitioner

Reg. Department Veteran's Affairs

**5427 2064**

Business and After Hours

1895 Mt. Macedon Rd., Woodend

# What's New?

## We are now open 7 days

## ZAPPA-do Baby and You!

3/87 High Street, Woodend • 5427 1270 • www.zappado.com.au

## The Australian Shakespeare Company at Duneira

The Australian Shakespeare Company performs a romantic and sensuous night of theatre under the stars set in the sumptuous gardens of historic Duneira, Mt Macedon  
*Lady Chatterley's Lover*

DH Lawrence's erotically charged and psychologically powerful depiction of adult relationships will come to life in the sumptuous gardens of Duneira at Mount Macedon. Join us as we follow Lady Chatterly as she realises that her emotionally and physically stifled marriage is no match for true equality and fulfilment with her lover Mellors. She breaks the biggest rule of all and falls in love with a man below her class – her husband's gamekeeper. Lawrence's vivid depiction of their sexual exploration of each other has made this story a timeless classic. Directed and adapted by Glenn Elston.

Friday 25 and Saturday 26 February 2011 at 7pm  
Tickets are adults \$40, concession \$35, groups 10+ \$35, under 18s \$25, Please note: includes nudity, parental guidance advised for children under 18 your olds.

### *Alice in Wonderland*

Join Alice as she goes down the rabbit hole and follows the White Rabbit into the fun and magical world of Wonderland. She will get taller and smaller, dance with the Dodo, talk with a Caterpillar, sneeze with the Duchess, have tea with the Mad Hatter and keep her head from the Queen of Hearts.

This captivating promenade production will keep the

whole family enthralled and entertained with acrobatics, shouting, singing, dancing and riddles and rhymes. There's lots of fun participation for the kids and even the adults have to turn into cards and march behind the Queen of Hearts – or it's off with their heads!

Saturday 5th at 11am and 5pm . To book for either event call 1300 122 344 or book online at [www.australianshakespearecompany.com.au](http://www.australianshakespearecompany.com.au). Cash sales are available at the on-site box office from 5.30pm unless sold out. The performance lasts for approximately 2 hours including an interval. Bring a blanket or cushions to sit on, a picnic with of all the goodies you like to eat and drink and warm clothes as sometimes it can get cool in the evening.

Submitted by the S. R. Stoneman Foundation

## Hangin' Rock Car Club Show

*-present by the Macedon Ranges Car Club*

Come and join thousands of other motoring enthusiasts at Victoria's premiere Classic Vehicle display day this February 13th at the scenic Hanging Rock Reserve

As a 'classic motoring event' - the day is focused on vehicles of the 1986 and before eras.

As well as all the cars, there's heaps of entertainment onsite for kids (of all ages) as well as displays from our sponsors. The Animal Farm, Sack races, Rocker Cover Racing, Face Painting are all back - listen for announcements regarding times.

Bring your own picnic or purchase food and refreshments from the onsite stands.

Entry fees for this great family day remain at 2010 prices - \$20 per car & truck, \$5 for motorcycles and \$5 for pedestrians - and of course children are always free.

For further information, please view the website: [www.picnicathangingrock.com.au](http://www.picnicathangingrock.com.au)

## Ruby Pickles

Handmade • Organic • Unique



Ruby's  
Summer  
**SALE**  
Now On

Winter is on it's way and we need to make room for new stock!  
Grab a summer bargain!  
Ends 28th February, 2011  
or until stocks last.

[rubypickles.com.au](http://rubypickles.com.au)

## CASTLEMAINE—GISBORNE CLEANING SERVICE

CHRISTINE ADAMS, FRYERS ROAD, ELPHINSTONE 3448

**Carpet Cleaning Specialists**  
**Duct Cleaning, Window Cleaning, etc.**  
**For all your cleaning requirements**

- no job too big or too small -  
*obligation-free quotes*

Tel: 5473 3307 Fax: 5473 3310

**Mobile: 0419 006 591**



WILLIAM BAJZIK N.D.  
NATUROPATH  
**HOMEOPATH HERBALIST**  
BOWEN THERAPIST  
ATMS 5485

• IRIDODOLOGY • ALLERGY TESTING •  
• ACUPUNCTURE POINT ANALYSIS •  
• HERBAL MEDICINES •

P: 5427 1666  
M: 0402 880 271

42 ANSLOW STREET  
WOODEND

## Falling Trees

By late November I was devastated to find about 20 beautiful trees had fallen to the ground in our Woodend garden. They were mainly local Eucalypts, but we also lost Blackwood Wattles, exotic fruit and ornamental trees too. Clearly, this has happened throughout the Macedon Ranges these past months, with thousands of trees down, sometimes in very unwelcome situations.

I guess we are all wondering why this has happened. Obviously, the main cause is the incredibly soft wet soils together with some fresh winds. But many have observed that the trees seem to have very small root systems which have exacerbated the problem. My guess is that the prolonged drought has limited root development.

But to put it in perspective, I looked at the old rainfall records for Woodend which date from 1889. For 2010 we

had over 1200mm of rain. That has only happened 4 times since records began 121 years ago. Our long term average is 809mm, so we are looking at about 50% more than average rains for the year. On top of that, in November, Woodend received 193mm. That was by far the wettest November on record, the next wettest being 1952 with 147mm. We can only imagine what Woodend looked like in September 1916 after it received 326mm for that month!

So adding the fact that southerly winds funnel around the base of Mt Macedon to give Woodend very strong breezes at times, little wonder that our current "mud pie" soils have trouble supporting trees.

So, realistically we can expect things to be better after we have cleaned up the mess and with any luck it should be decades before such destruction happens again.

Submitted by Peter Yates

## Bear Hugs

The 2010 Woodend Teddy Bear Show was again a hit with the teddy bear faithful as well as locals and visitors from around Australia and New Zealand.

Proceeds from the event will continue the sponsorship of two bears living in sanctuaries operated by Free the Bears.

Organisers wish to thank the following supporters: Schatzi's, Zappa Do, Sign Obsession, Woodend Simply Health, Massage therapist Tamara Drury, Feeling Framed, Woodend CFA, Kyneton Brass Band, New Leaves, Free the Bears Fund and Rikki Bewley.

This year's Show will be held on Sunday, October 30 at St Ambrose Hall, Woodend.

Submitted by Nadine Hartnett

# CENTRAL VICTORIAN TIMBER

- Timber •
- Sleepers •
- Treated Pine •
- Cypress posts •
- Hardwood •
- Plaster •
- Doors •

Specialists in house lots and extensions  
Phone: 5427 1090  
Email [centralvicttimber@bigpond.com](mailto:centralvicttimber@bigpond.com)  
Monday to Friday 8am - 5pm Saturday 9am-12pm

**988 Blackforest Drive Woodend (Old Sawmill Site)**



Specialising in:  
CAR PARK KERBS • ASPHALT EDGING  
GARDEN EDGING • VARIOUS PROFILES  
REPAIR WORK



**IAN**  
**0409 443 036**



★ ★ Polaris  
★ ★ Financial Services Pty Ltd

1605/530 Lt Collins St Melbourne Vic 3000  
Tel 9629 4979 & 9629 4975 Fax 9629 4973

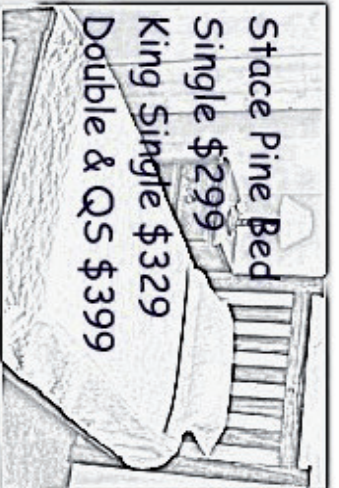
*Strategic Financial Planning - Holistic Appropriate Financial Advice*  
**Our comprehensive services**  
*are available in the Macedon Ranges.*

- **Strategic financial advice.**
- **Tax effective savings strategies**
- **Social security specialist**
- **Retirement & Superannuation**
- **Wealth protection & Insurances**
- **Financial life strategies**
- **Self Managed Superannuation Funds**

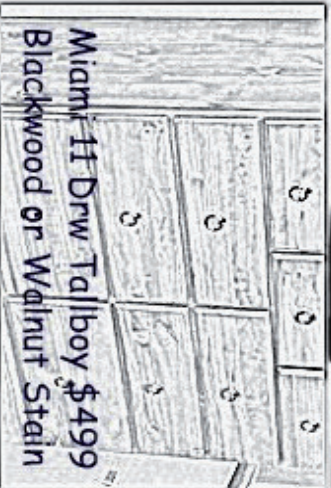
Polaris welcomes your enquiries and there is no cost for an initial one hour appointment. Over this initial hour we discuss your personal needs and objectives and from there, work with you towards the most appropriate financial strategic plan.

**Local by appointment only, Macedon Ranges Business Centre, High St Woodend**  
**Call Anneliese to book 0413 373 884**

Polaris Financial Services Pty Ltd ABN 99 13110 5514  
Is a corporate Authorised Representative (No. 327962) of  
Australian Financial Services Ltd (AFSL 297239).  
Anneliese Willmott Adv Dip FS (FP) is an Authorised Representative  
(No. 268440) of Australian Financial Services Pty Ltd AFSL 297239.



**Stace Pine Bed**  
 Single \$299  
 King Single \$329  
 Double & QS \$399



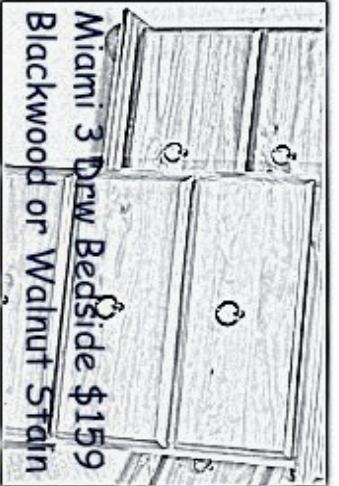
**Miami 11 Draw Tallboy \$499**  
 Blackwood or Walnut Stain



**Rustic Storage Trunk**  
 From \$299



**\*\*SUPER SALE PRICE\*\***  
 Alpine Toybox Bookcase  
 Nutmeg Stain Only \$299



**Miami 3 Draw Bedside \$159**  
 Blackwood or Walnut Stain



**Raw Pine Duchess Mirror**  
 only \$99

**ANNUAL BEDDING & FURNITURE SUMMER SALE**  
**SAVE UP TO 30%**  
 FOR A STRICTLY LIMITED TIME & SUBJECT TO STOCK  
 AVAILABILITY ON BEDS, CHESTS OF DRAWERS ETC  
 HURRY, LIMITED TIME ONLY

**VILLAGE FURNITURE**  
 13 - 15 Horne Street, Sunbury

**9744 3333**  
**More SALE ITEMS in store.**

Buy a mattress with any bed & we'll reduce the price further



**Raw Pine Drawers**  
 All sizes available  
 9 Draw \$359



**Provincial White Have**  
 3 pce Single Suite \$945  
 King Single Suite \$999

**LIMITED STOCK**



**Ridito White**  
 3 Piece  
 QS Suite \$769



**Horsham Ash Hardwood**  
 QS Bed ONLY \$799

**LIMITED STOCK**



**Astera White Horizon**  
 6 Draw Tallboy \$599



**Orlando Rustic & Chunky**  
 QS Bed ONLY \$799

## Woodend RSL Women's Auxiliary

As this is my first letter for 2011 I would like to wish all our patrons and supporters a very Happy New Year. The response to our Christmas Dinner (we had a full house) and our Monster Christmas Raffle was truly great. Our thanks to all the traders and our members for their donations.

Here are the results of the raffle: -1st Shirley Muir, 2nd Robin, 3rd Isobel Plant, 4th John, 5th Betty Howden, 6th Betty White, 7th Judith Adams, 8th Helen, 9th Jodie Muscat.

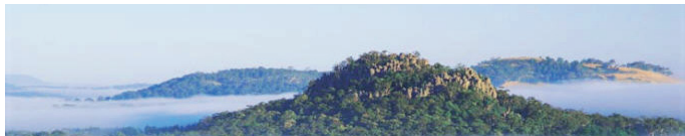
As the Auxiliary usually have time out until early February, not so this year. We still had parties to cater for and the arrangement meetings with the Rotary Club who are again joined with our RSL for the Australia Day celebrations held again at Woodend RSL.

The Woodend RSL had a dedication plaque unveiled by Major General McLauchlan from Anzac House on the reopening of our RSL on Saturday 29th January, with the Auxiliary girls providing the catering. Another milestone for our dedicated RSL and Auxiliary members who fought and won to keep our RSL.

Our Friday night dinners will be fortnightly this year, with the first on the 4th February, next one 18th February. Please give us your patronage this year once again.

The first meeting for our Auxiliary will be Saturday 5th February at the new time of 12 noon. All members will be notified of the change of time.

Submitted by Betty J. Barned, Secretary



## Quality Blinds at factory direct prices

- Sunscreen/Blockout Blind
- Latest Styles/Fabrics/Colours
- Automated Blinds
- Roller/Roman Blinds/Venetians
- Exterior Awnings
- Professional Installation Team

Ring Now for a **Free In House Consultation/Quotation**

Mark 0437 759013

Simon 0458 338995

*Contemporary Blinds  
Where Style is Affordable*



# COMPUTER SERVICE

**Sales - Service - Training & Help**

THE BANK - OFFICE 3 - 75 HIGH ST WOODEND

**JASON JOHNSON - 0400528129**

*pcs@live.com.au*

[jigsawstairs@optusnet.com.au](mailto:jigsawstairs@optusnet.com.au)

**0408 153 124**

# JIGSAW STAIRCASES

P.O Box 93 Woodend Vic 3442

## Free Strategic Planning Session

This one-day workshop, presented by Matrix on Board, is suitable for staff, boards and committees of community organisations that want to conduct a strategic planning process. It is designed to assist staff, boards and committees to:

- develop a greater understanding of the impact of strategic planning
- consider strategic planning in relation to community development, action research, capacity building, strengths based analysis and other important indicators of future success
- learn practical methods to undertake an environmental assessment, set strategic directions and goals, and develop and implement a strategic plan
- identify the role of the board, staff and community in the strategic planning process

The workshop will encourage questions and active participation from attendees across a range of practical scenarios common to many not-for-profit organisations. This workshop, is based on the methodology used by Matrix on Board in working with organisations to develop strategic plans, and uses tools developed to support this process.

Registrations are now open! To register for the free Strategic Planning Session, VCOSS Clearinghouse is using a new online system for registrations ,Eventbrite. To find out how to register visit [www.vcoss.org.au/clearinghouse/resources/R&R2011.html#Register](http://www.vcoss.org.au/clearinghouse/resources/R&R2011.html#Register)

If you have any trouble using this new system please call VCOSS Clearinghouse on 9654 5050 for assistance.

Wednesday 2 March 2011 9am - 4.30pm (lunch included)  
Richardson Room, Kyneton Town Hall Mollison Street, Kyneton.

Submitted by Gaynor Atkin, Community Projects Coordinator, Macedon Ranges Shire Council

### Massage Pilates Remedial Rehabilitation

with Pamela Kell

By appointment  
22 Goode Street  
Gisborne  
5428 1000  
0408 093 098

Assisting in the repair and maintenance  
of your body

Welcome to the Woodend Star

# Kids Club

## February Birthdays

15th	Sam Forbes .....	Turns 10
6th	Jayden Bullard .....	Turns 13
12th	Kellie Ingleton .....	Turns 11
16th	Alice Bills .....	Turns 12
17th	Tyler Daniel Sturt .....	Turns 10
17th	Kathleen McQuade .....	Turns 14
20th	Joseph Hebb .....	Turns 9
22nd	Luke McVicar .....	Turns 12
23rd	Jane K. McLeish .....	Turns 13
25th	Sam Hayward .....	Turns 13
25th	Malachi Anderson .....	Turns 9
25th	Chantelle Takos .....	Turns 9

## Happy Birthday Everyone!

### JOIN THE WOODEND STAR KIDS CLUB

Fill in your details below and place in the drop-boxes. Age limit is restricted to 13 years old. Must be resident of 3442 postcode.

Full name: \_\_\_\_\_

Address: \_\_\_\_\_

Date of Birth: \_\_\_\_\_ Age: \_\_\_\_\_

Phone: \_\_\_\_\_

Parent/Guardian

Signature: \_\_\_\_\_

Sponsored by:



## Collier Office and Business Assist

Shop 5, 130 High St, Woodend. P: 5427 3209 e: sales@collieroffice.com.au

**You can collect your birthday surprise by visiting Collier Office & Business Assist**

Regular business card advertisements (90mm x 55mm) are \$49 inc GST per month - book & pay 11 months and get 10% off.



## Magnetic Websites

### Martin Beaumont

PHONE 03 5427 4478

MOBILE 0414 274 988

HTTP www.magneticwebsites.com.au

EMAIL martin@magneticwebsites.com.au

Developing websites for the Macedon Ranges and beyond, ask how we can help you get online



## Fire Danger Period now in Macedon Ranges

The CFA announced that the Fire Danger Period (‘fire restrictions’) for the Shire of Macedon Ranges came into force Monday 10 January 2011 and remain in force until 1 May 2011.

The date for the commencement of the Fire Danger Period was been determined based on projected weather conditions, including moisture levels in grasslands.

Mark Gilmour, the CFA Operations Manager covering the Macedon Ranges, said that: “It does not take much for vegetation to dry out in hot and windy weather. A week or more of prolonged warm weather can turn previously lush vegetation into fuel for fire.

“The vegetation may have been quite green recently, but residents should not be lulled into thinking everything will be fine in February and March. We anticipate a short but intense summer with a major focus on grassfire risk, particularly in areas with large tracts of open grasslands,” he said.

Mr Gilmore said residents should continue to be informed about local risks and plan for them.

“The weather can change quickly, as we saw with the scorcher on New Years’ Eve, and several hot days recently, it is therefore important that decisions are made now so that on high fire risk days, residents are well-prepared and ready to take action.

“If people haven’t already done so, now is a good time to get busy around their homes and to clean their gutters; clear leaf litter and other fine fuels from around homes; to remove flammable items such as paper, boxes and crates; and to store fuel supplies and chemicals away from houses.

“If residents need more information on how to prepare and what to do in the event of a fire, the CFA website, www.cfa.vic.gov.au is a great resource. It includes the FireReady Kit, a resource to help residents prepare their bushfire survival plan and the Household Bushfire Self assessment tool, a tool that takes residents through a number of steps to assess the defendability of their home.

“Residents can also request an on-site assessment of their property’s bushfire risk by a CFA Fire Safety Officer. The Victorian Bushfire Information Line on 1800 240 667 is also an added resource for bushfire planning advice,” said Mr Gilmore.

### Fire restrictions: the details

- Under a fire restrictions regime, a permit is required to burn off grass, undergrowth or weeds. This permit is issued by the Municipal Fire Prevention Officer from the Macedon Ranges Shire.
- Barbeques and fires for cooking and warmth, however, do not require a permit, but must be lit in properly constructed fireplaces, within limits of wind speed and clearance perimeter, and are to be supervised at all times.
- All burn-offs should be registered with the VicFire Burn-off notification line on 1800 668 511.
- Lighting a fire in the open without a permit is an offence



start your Aikido journey

**Simon Harris, 5th Dan  
Japanese trained**

Tues & Thurs evenings  
7pm, Macedon Community Centre,  
Tony Clarke Reserve,  
Waterfalls Road, Macedon

[www.iwamaaikido.com.au](http://www.iwamaaikido.com.au)  
0417 505 611



and can bring a penalty of up to \$5,500 or 12 months imprisonment.

- The Can I or Can't I? brochure, also available from the CFA website, details the fire restrictions regime, including the differences between fire restrictions and Total Fire Ban days.
- CFAs On the Land: Agricultural Fire Management Guidelines provides practical fire management advice for people living and working on rural properties and is particularly useful to those new to farming. To view and/or download the guidelines, go to [www.cfa.vic.gov.au](http://www.cfa.vic.gov.au).

For further information contact Captain Mick Christie on 0419 870 601 or 1st Lieutenant Mike Dornau on 0409 093 935. On Sundays call the Woodend CFA on 5427 2356 or visit the station in Urquhart Street. Or you can visit our website: [www.woodendcfa.org](http://www.woodendcfa.org).

The Woodend CFA is a volunteer emergency service, committed to Creating a Safer Community.

Submitted by 1st Lieutenant Mike Dornau, Woodend CFA

## Put some spring in your step & get fit this Summer!

**Reduce the bounce!**  
Shape up this Summer  
with the **Anita  
Momentum seam-  
free Sports bra &  
Anita Extreme Sports  
bra.**

**Firm support** to suit  
all levels of exercise  
and activity...



**bodywise**  
UNDERWEAR

*comfort for women ... everyday*

[www.bodywise.com.au](http://www.bodywise.com.au)

**1300 66 17 66**

Shop 19, 130 High Street, Woodend  
**APPOINTMENTS ESSENTIAL**

**NEW COLOUR!**  
Place your order now for  
**Lavender, available soon in  
everyday bras and briefs.**

## Macedon Ranges Rural Australians for Refugees

Once again the people of Woodend have shown their generosity.

A sausage sizzle outside Coles on Saturday 18th December raised in excess of \$1500 in the form of food collection and cash donations. The cash and the food collected is taken to the Asylum Seeker Resource Centre (ASRC) in Melbourne, and distributed to refugees who visit the centre- families struggling to survive with no income and unable to find work.

The day was a great success, with people bringing bags full from the supermarket, others donating money.

The collection of food is ongoing in Woodend. Non perishable food stuffs can be left at Collier Office & Business Assist, and at St Mary's Church through out the year.

Submitted by Ann Johns for MRRAR

## Heritage Society News

As we try and get our heads around the extent and devastation of the Queensland Floods, and watch anxiously as rivers continue to rise and threaten towns to our immediate North, it is timely to look back at the history of flooding in our own area.

Woodend has never, and hopefully never will, experienced anything like the damage that has taken place this year in these areas, but nevertheless, we too have our own long history of flood damage, often with related loss of property and life. If we search on "Flood" in our own database at the Local & Family History Resource Centre, the computer responds in much the same way as it does when we search on "Fire". If we also search on "drowned" sadly it indicates that over the years many people, especially children, have lost their lives to swollen rivers and flash flooding. In 1859, for example, Joseph Harper, a prominent Woodend townsman and onetime Mayor stated his concerns re. the flooding of the Campaspe and in the same year, a monument in the Woodend cemetery records the drowning of William Kelly, aged seven, in the Five Mile Creek. In almost every year some event like this is recorded. In more recent memory, many of our oral history tapes record memories of the need to be carried across the highway through knee high water, to reach the Primary school.

But what of today? The fact is, Woodend still has many areas that are subject to flooding and given the information we are receiving from recent studies, extreme weather conditions will become more regular and severe in years to come. This is an extract from "The Age" January 17, 2011 which refers to a Melbourne Water study: "Melbourne suburbs likely to flood more often"..... "The report concluded with a frank warning to urban planners "This change in rainfall intensities may have significant implications on future planning, management and infrastructure.....we may need to revise our infrastructure design standards in some areas currently considered appropriate for development may be vulnerable in the future."

Submitted by Janet Hawkins

## Events at Duneira

This gorgeous property is much more than a tribute to the past, a curious relic or a museum piece: it is a living cultural centre that aims to invigorate and inspire people of all ages.

Duneira houses collections of rare botanical plants in its magnificent grounds, and antiquarian books, artwork and historical furniture in the 1875 historic Victorian homestead. It provides a canvas to explore new ideas, an opportunity to converse with inspiring guest lecturers and simply to look after yourself.

Events include:

- Garden Tour With Stephen Ryan, Thursdays, 17 February and 17 March
- Guided Tour of Duneira; Wednesdays, 9 February and 2 March
- Art Tour with Peter Perry Saturday 19 March .
- Antiquarian Books Lecture, An introduction to the Stoneman Library at Duneira Saturday 21 May
- Lecture: How To Write Books, with Geoffrey Blainey AC, Saturday 30 April
- Meditation Workshops with Pauline McKinnon. Saturdays, 19 February and 12 March
- Yoga Sessions with Judith Buck. Saturdays; 12 February, 19 February, 26 February, 5 March, 12 March, 19 March
- Autism Spectrum Disorders with Professor Bruce Tonge and Dr Avril Brereton on Saturday 21 May
- On The Couch with Dr Barry Jones - Saturday 12 March
- On the Couch with Prof. Patrick McGorry - Saturday 30 April

- Duo Harpsichord Concert - Saturday 26 February
- Firebird Trio - Saturday 19 March
- Tony Gould Jazz Trio - Saturday 9 April

Also featured, in partnership with The Australian Shakespeare Company, *Lady Chatterley's Lover*, 26 February, under the stars in Duneira's stunning gardens, as well as *Alice in Wonderland* on 5 March. Pack a picnic, pack the kids, and come along to Wonderland in the sumptuous gardens of historic Duneira, Mt Macedon.

Duneira is a place of timeless elegance and beauty, with a touch of old England. Come and enjoy. Be inspired.

For further information view the website [www.duneira.com.au](http://www.duneira.com.au) or please call 5426 1490 to receive a copy of the current program.

Submitted by Jackie Ogeil



"for all your water needs"

**The Water Bloke Specialises in**

- Rainwater Tank Installations
- Tank To Toilet connections
- Grey Water Recycling

We're based in Woodend, so call us for a free consultation and Water Audit of your home.

Contact Craig on 0410 275 714  
[thewaterbloke@gmail.com](mailto:thewaterbloke@gmail.com)

## 2011 MACEDON RANGES BUSINESS PROFESSIONAL DEVELOPMENT EVENTS CALENDAR



- |   |  |
|---|--|
| 14 Feb <b>Sustainability Business Workshop</b> (Free) Woodend | 4 May <b>Business Panel</b> PM (Free) Kyneton                  |
| 22 Feb <b>Tax Basics Workshop</b> (Free) Woodend              | 24 May <b>Social Media</b> (Free) Woodend                      |
| 2 March <b>Business Panel</b> AM Session (Free) Gisborne      | 1 June <b>Macedon Ranges Business Awards</b> Kyneton           |
| 2 March <b>Business Panel</b> PM Session (Free) Kyneton       | 28 July <b>Business Networking Evening</b> (\$25.00) Kyneton   |
| 8 March <b>Record Keeping Workshop</b> (Free) Woodend         | 5 August <b>Romsey Region BATA Annual Breakfast</b> Romsey     |
| 22 March <b>Business Networking Evening</b> (\$25.00) Macedon | 8 Aug <b>Sustainability Business Workshop</b> (Free) Woodend   |
| March (Details TBA) <b>KDBATA Annual Breakfast</b> Kyneton    | 25 August <b>Working with your council</b> (Free) Gisborne     |
| 18 April <b>Business Deductions</b> (Free) Gisborne           | 3 October <b>Barista Course</b> (Cost TBA) Gisborne            |
| 18 April <b>Activity Statements</b> (Free) Gisborne           | 24 Nov <b>Business Networking Evening</b> (\$25.00) Lancefield |
| 4 May <b>Business Panel</b> AM (Free) Gisborne                |  |

For further information & to make a booking please go to [www.mrsc.vic.gov.au](http://www.mrsc.vic.gov.au) and follow the links to Tourism & Business or call the Economic Development Unit at Macedon Ranges Shire Council on 54219 616

# Cancer and Natural Therapy Foundation

– *What's on in February 2011*

The Cancer and Natural Therapy Foundation is a non-profit, registered charity organisation aimed at assisting people in accessing information and resources in the area of natural therapies and expanding health care options.

The Foundation provides the following services and resources: information and referral, resource library, professional counselling, guest speaker program, support groups, reiki healing, ifas treatment, ear candling, quarterly newsletter, self help workshops and educational films.

## Weekly Support Groups:

- Health Awareness Support Group  
Offering meditation, reiki healing and general discussion on natural therapies and preventative medicine. Tues 7.30-9.30pm.
- Self Empowerment and Healing Support Group  
For "confidence building" and "positive living". Thursdays 10-11.30am.

## Health Workshops & Film Documentary and Discussion Nights for February

- Reiki I Workshop - facilitated by Gary McKenzie. Learn the healing art of Reiki. On Sunday 13 February from 1pm to 6pm. Cost \$85, \$75 for students/ pensioners or \$65 for CNTF Members.
- Living Food Cooking Workshop - This class introduces you to the world of enzyme enriched, natural, living food cuisine to help promote health and longevity. You'll be shown how to use specific equipment to produce nourishing and cost efficient foods. On Saturday 19 February from 10am-3pm. Cost \$65 or \$55 CNTF members.
- "Codex Alimentaris" Film Documentary – A documentary that addresses the governments moves to control the food industry including herbs and natural supplements. On Tuesday 22 February at 7.30pm. Cost \$10 or \$8 CNTF members. All Welcome!  
Held at Neighbourhood House and Community Centre, Elizabeth Drive, Sunbury. 9740 3977 or Sandra on 0411 100 947

Website: [www.cancernaturaltherapyfoundation.org](http://www.cancernaturaltherapyfoundation.org)

Submitted by Sue de Jonge

## Chiropractor – Mark Brown

- 20 years in Practice.
- Upstairs at Westpac Bank, 75 High Street
- Muscle realign and stretch techniques
- Gentle spinal adjustments
- Shoulder, elbow, wrist, knee, foot problems
- Headaches, migraines, athsma, neuralgia, digestive problems



Phone 5427 1456 or 0407 526 403

# Bradley's

## Curtains + Blinds showroom now open

Mon to Fri 9 - 5.30 + Sat 10 - 1



t 5427 2361 fx 5427 1019 72 High Street, Woodend VIC 3442

[www.bradleyscurtains.com](http://www.bradleyscurtains.com)

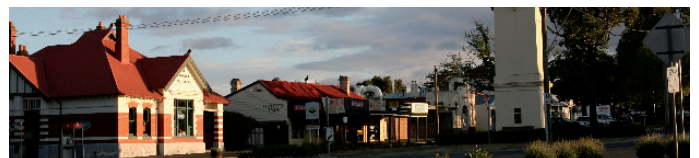
## MACEDON RANGES SELF STORAGE

- \* 7 day access
- \* Individual units
- \* Affordable prices
- \* Insurance available
- \* Now Fully Alarmed

Store your:  
\* Cars  
\* Boats  
\* Business documents  
\* Furniture etc.

Lot 3, Hoyle Court, Kyneton  
(Off Beauchamp St)

5422 1898  
5422 3488



We deliver to your home the

**freshest, best quality,  
certified organic  
fruit & vegetables available  
& guarantee this 100%**

Pick from a range of pre-selected boxes or select your own order from our weekly availability list

Phone: 0409 386 875  
or 5429 1156

email: [vivien@netcon.net.au](mailto:vivien@netcon.net.au)

[www.vivsorganics.com.au](http://www.vivsorganics.com.au)

# THE *B*ROOKE STREET MEDICAL CENTRE



*Dr. Helen Lockey & Dr. Mohammad Eshani*

## **New doctors ...**

We warmly welcome Dr. Helen Lockey & Dr. Mohammad Eshani to the Practice. Here are a few words from them:

**Helen:** I have been working in general practice for 28 years. My last stint was 9 years in a practice in the CBD of Melbourne, and prior to that I worked in Student Health at Victoria University, at a Women's Health Service, and in various general practices and community health centres in the western suburbs of Melbourne.

My interests are in preventive health and lifestyle issues, women's health, and mental health. I have recently moved to the area and am enjoying being away from the big smoke and looking forward to a slower pace of life.

**Mohammad:** I have spent the last 4 years working in Emergency Departments and I continue my Emergency training. I was rotating in Melbourne hospitals for a while and then started to travel around Australia to get a range of experience.

I have worked in rural and metropolitan hospitals in Victoria, Tasmania, NSW and Queensland.

Even now I do some emergency medicine shifts just to be involved with the acute care of patients. This keeps my experience and knowledge up to date.

Back home in Iran I was a GP for around 2 years, and I worked in a place where the closest hospital was 300km away. There was no air ambulance or other emergency facilities and I had to manage almost all the cases there.

I look forward to working in General Practice again here in Woodend.

***Brooke St. Medical Centre – tel. (03) 5427 1002 (after hours: tel. 1300 55 75 12)***

## **... and more to come**

Dr. Joliene Dorgelo and Dr. Nyan Win, a GP Registrar will start with us in February, followed soon by two more GPs in March.

We aim to open our books to new patients as soon as we are able to.

## **New Building**

The first stage of our new building is on track to open in February and the second (back) stage looks set to be finalised around May/June this year.

## **Whooping Cough**

There have been many people of all ages diagnosed with whooping cough locally. Whooping cough can be seriously debilitating and can last for months. For babies, this infectious disease can be fatal or cause permanent disability such as brain or lung damage.

While all people should ensure they are immunized, people in contact with infants should especially be immunized. Until 30 June 2011, parents of newborns (including adoptive and foster parents) are able to get the vaccine free of charge and simply pay the cost of the consultation fee.

Protect yourself and others in the community – call for an appointment.

## **Code RED fire days**

The practice will close on Code RED days. For urgent medical calls - **0428 902 652** & after hours call our usual service - 1300 557 512.

*(The "Code RED" phone will not operate at any other time).*

## Do you know how many chemicals you could be eating?

Do you know where, and more importantly, how your fruit and vegetables are grown?

All our fresh produce are Australian grown with no chemical sprays, artificial fertilisers or genetically modified materials,  
**just as nature intended.**

Nature's Garden Organic Produce is guaranteed Australian grown and 100% certified organic.

Call in and see our extensive 100% organic range at Shop 4A Collier St, Woodend (cnr Anslow St) or call 5427 4406  
[www.naturesgarden.com.au](http://www.naturesgarden.com.au)



# BGE

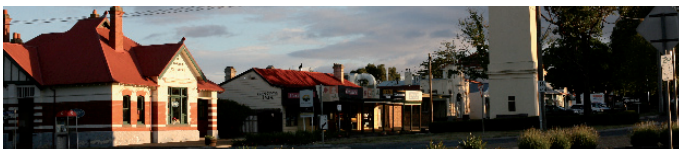
## Joinery Quality you deserve

• Kitchens • Shop fittings • Bars

### BRAD ELSE

Mob: 0412 355 548 Ph: 5422 2571  
New Factory & Showroom

Lot 11 Kyneton - Metcalfe Road, Kyneton  
11am - 5pm Fridays or by appointment



### FIREBIRD MOTOR REPAIRS CAR WASH

31 URQUHART STREET  
WOODEND 3442.

OPEN 7 DAYS  
Phone: (03) 5427 2255

## Newham Primary shows the way

On Dec 13th The Rotary Club of Woodend was presented with toys and books and boxes of food for the needy families project run by Fr Ray Saggars.

In addition Woodend Rotary President Brendan Watters was given a cheque for \$274 towards Disaster Aid causes overseas such as the Pakistan floods and Haiti earthquakes. Newham Primary School has really set an example for other schools in the area to embrace community service. Principal Carolyn Robb and her teaching staff encourage pupils to support causes for those people less fortunate both locally and abroad.

Newham Primary School was presented with a Rotary Certificate of Appreciation for the work of their pupils in providing such generous donations. Both Woodend Rotary and the school hope to work together on other community projects in the future.

Submitted by Brendan Watters



## WEBSITE DEVELOPMENT

- Up your business's power with a custom designed website
- Macintosh Computer and iPhone / iPad help
- Affordable Rates

Chris Doe  
[Chris@jumbowebdesign.com](mailto:Chris@jumbowebdesign.com)  
54272092  
040 882 5363

## Woodend Senior Citizens

Thank you to everyone who supported our Christmas Hamper raffle. The tree main prizes winners were: A. Bartram, E. Read and B Kny.

2011 activities are:

- Button Bingo, 1.30pm Tuesdays (win a prize)
- Carpet Bowls, 10.30am Fridays
- Cards, 1.30pm Fridays

General meeting and trading table on Friday 4th February at 11.00am followed by lunch (bring or buy your own) then cards from 1.30pm

Monday 14th February see's us off to the new Soccer Stadium and Melbourne Aquarium

Please come and join us, new members always welcome.

Submitted by Alma Warnock, President 5427 1644

**Help us help you! Please EMAIL your ads and articles PRIOR to the 15th of the month to [sales@collierooffice.com.au](mailto:sales@collierooffice.com.au)**

## Upcoming Feature

The *New Woodend Star* is proposing to run another of our well regarded features, this time casting the spotlight on our trades and service providers. With our feature set for March 2011, please contact Alexia if you'd like to expand your business promotion. Places will fill fast, so contact us quickly!

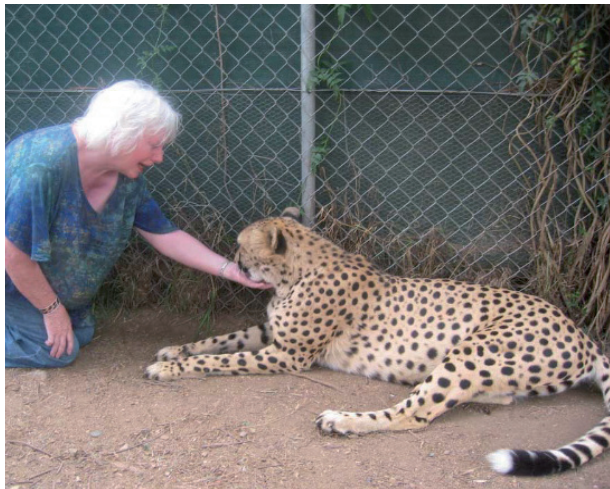
## Painting tigers to save them

Woodend locals and visitors will get a chance this month to help endangered tigers and cheetahs and at the same time to own a beautiful piece of art to decorate a wall.

Regional artist and Logie-winning actress Maggie Millar has always loved big cats so it seemed an obvious step to use her art to assist in their survival. She is holding an exhibition of paintings of big cats, including tigers, lions, panthers, snow leopards and cheetahs, at the Colenso Gallery in Anslow Street, on now till 20 February.

All profits from the sale of the pictures will go to projects to save the Sumatran Tiger and the African Cheetah sponsored by the late Steve Irwin's Wildlife Warriors organization. As an artist, Maggie is an accomplished portrait painter and she uses her unique ability to bring a face to life in her close-up portrayals of her beloved animals.

The exhibition is a chance for lovers of big cats to enjoy Maggie's loving representations of them in all their majesty and, by purchasing one of her



paintings, to not only own a stunning work of art but also to help the endangered species survive. The paintings will be attractively priced and will not be beyond most people's budgets.

"Tiger Tiger: Images of Cats by Maggie Millar" till 20 February at Colenso Gallery, 42 Anslow Street, Woodend, Ph 5427 2788

Submitted by Ian Robinson

## Picnic at Hanging Rock - Outdoor Screening

It's an eerie feeling to be sitting at the foot of Hanging Rock as dusk falls on a summer evening when the screen comes alive with the movie filmed at that very location.

Bring your loved one, family or a group of friends and capture the mysterious atmosphere of the Rock while watching the story of Miranda and her friends unfold on the big screen in Peter Weir's epic film "Picnic at Hanging Rock".

This one-night only screening under the stars will take place on Saturday 5 February 2011 at Hanging Rock Reserve. Meal Packages are available from Hanging Rock Café by reservation only (5427 0295).

Tickets can be purchased on the night from the gate at a cost of \$20.00 for adults and \$10.00 for children. Gates open 7pm. Movie starts at dusk.

Regular trade page advertisements 60mm x 40mm) are \$35 inc GST per month - book & pay 11 months and get 10% off.

### PSYCHOLOGIST

#### Sam Luxemburg

Registered Psychologist

- Personal Counselling in Woodend & Romsey (Medicare rebate available)
  - Counselling Training
- Myers-Briggs personality testing

Phone: 0428 270 401  
www.luxcollege.com.au

### STONELAYING & PAVING



Stonemason & Paver  
specialising in

- Retaining Walls
- Drystone Walls
- Stone Houses
- Paving
- Over 20 years' experience

Cameron Dunn  
Ph (03) 5427 4778 Mob 0429 162 589

## TRADE & SERVICE DIRECTORY

### AIR CONDITIONING

#### SPLIT SYSTEMS INSTALLATION AND SALES

Efficient heating & cooling  
For free quote, phone Dave  
DW Air 0407 248 454

### ELECTRICIAN

### HANDYMAN

#### Rowdy's Handyman Services Home & Garden Maintenance No Job Too Small!

- Carpentry,
- Plastering,
- Tiling
- Painting

P 5427 0072  
M 0416 274 732

### PAINTING

### TAXI SERVICE

# TRADE & SERVICE DIRECTORY

## ANIMAL CARE



**Macedon Ranges Pet Care**  
An alternative to kennels & catteries  
A reliable home care service for pets & farm animals,  
servicing the Macedon Ranges since 2003  
Phone Judy on 5427 1352

## CLEANING



Not enough hours in your day?  
Need help managing  
your home?

**Stephen Farrell**  
Personal Services

Very reasonable rates  
Through out the Macedon Ranges  
Phone 0419 526 275



## DRESSMAKER

**Beryl's Tailoring**

DRESSMAKING, ALTERATIONS,  
BRIDAL, EVENING & DAY WEAR,  
LADIES AND MEN'S REPAIRS



**Beryl Bachelor**  
QUALIFIED DRESSMAKER, NEWHAM  
BY APPOINTMENT ONLY  
MON TO FRI 9-5

5427 0568 0418 510 179

## EXCAVATIONS

**Cheap'n'Neat  
Excavations**

Bobcat/Excavator/12m Tipper hire  
Post hole digger  
Rubbish removal  
Free Quotes  
Contact Les 0418 556 634

## EXCAVATIONS

*Bobcat & Excavating  
Truck & Trailer  
Handyman Services  
Garden Design  
Mowing  
Fencing*



*Robert*

## FIREWOOD

**O'Callaghan Bros**  
REDGUM FIREWOOD SUPPLIERS  
**SPLIT RED GUM  
FIREWOOD**

Excellent Quality Delivered Dirt Free  
Ph 7 days  
0407 036 800 0429 957 091

## HOME INTERIORS

**Present Well**

HOME INTERIORS - WOODEND



- KITCHEN, LAUNDRY & BATHROOM CONCEPTS
- COLOUR CONSULTANCY
- LIVING ROOM & BEDROOM DECOR
- PREPARING A HOME FOR SALE

CALL DANIELLE FORMICA  
ON 0400 664 231

[www.presentwellhomeinteriors.com.au](http://www.presentwellhomeinteriors.com.au)

## HOME MAINTENANCE

Home maintenance & landscaping  
service including decking,  
pergolas, carpentry & painting.

Stuart 0409 150 629

AH 5427 2465

## METAL GATES



BVM METALCRAFT

Ben McKee

OLDWORLD & MODERN STYLE

GATES & FENCING

[bvmmetalcraft@hotmail.com](mailto:bvmmetalcraft@hotmail.com)

04 222 88 768

## PAINTING

**GEE'S**  
Painting etc.



Call Steven

0402 079 482

## PAINTING

**Painting & decorating**  
Residential & commercial  
Rendering  
Prompt & professional

**Rigoni Painting**  
Phone 0430 371 001



## PHYSIOTHERAPIST

**Kyneton Physiotherapy**  
ROBERT ROUSE

B. App. Sc. (Physio) Member A. Physio. Assoc.  
Registered for Comcare, TAC, W/Cover,  
Vet. Affairs

NO REFERRAL NECESSARY

74 High St. (Corner New St.), Kyneton

**5422 2290**

## TREE SERVICES



**A&P Tree Services**

- tree pruning / removal • stump removal
- tree planting / transplanting • rope & harness climbing
- confined space removal • fully insured

Professional commercial & residential tree maintenance  
all work carried out by qualified arborist

Call Anthony 0417 059 969

## TRENCHING

**ASHBY'S TRENCHING**

- Irrigation.
- Site levelling.
- Cable and pipe laying
- On tracks fit in small areas

Phone Mark 0427 973 360

## WRITING SERVICES



a few good  
**WORDS**



Editorials, Publicity, Advertising, Proof-reading, Letters.

Nadine Hartnett  
Freelance Writer

0439 399 838  
[nhartnet@blapond.net.au](mailto:nhartnet@blapond.net.au)

# SPORTS NEWS

## Woodend-Hesket Hawks

It may seem strange to be reading a football and netball report in February, but these days the running of a country football and netball club is definitely a 12 month of the year operation.

I hark back to the words spoken to me by an old boss of mine, "Anything that is worth doing is hard work".

Football & netball clubs are worth the work. Both sports have a unique place in the history and memory of most of us, and for many the years spent in 'local footy' are fondly remembered. Many friendships start and are fostered on the field of play, many of our greatest sporting achievements live in the humble domain of local footy and netball.

The biggest challenge facing country sports clubs (and all service groups for that matter) is without question, people power. The list of jobs required to be undertaken to fulfill our charter is lengthy. I encourage any of you in the community who have an interest in local footy or netball, and may have a few hours to spare on a Saturday (or during the week,) to give us a ring and see how you may be involved. Our club is a good place to be around.

We all do it for the love of it – and this includes our players. The boys and girls who we have at the club have a love of the Woodend-Hesket Club and are playing their sport for all the right reasons – for their mates and for the fun of being part of a team.

Each week our football netball club offers nearly 100 people of our community the chance to keep fit and mentally fresh. While it is not the role of the local sports club to cure society's ills, we do have an important role to play in the development of our young people. We do this by creating a culture of respect and acceptance across the entire club – a culture where we look after our mates, we respect ourselves and our community, and where we provide confidence, guidance, and trust to our people for them to make the right decisions for their own safety and development.

We have been, and will be, getting around our local businesses to ask for their support again in 2011. It is only through the generous support of our local traders and businesses that we can afford to put our players on the paddock and the court.

I hope to see you at the footy and netball in 2011. Even better, I hope to see you actively involved in the growth of our club in whichever way you can assist.

Go Hawks (My Town. My Team)

-Submitted by Jock Allan – 0419 308501



**24sevenalarms.com.au**  
24 Seven Alarms Aust Pty Ltd

- Alarms installed, Serviced and Monitored
- Data cabling and phone line installation
- Medical Alert Systems
- Access Control Systems PSBL: 732-083-90s
- Digital Video Surveillance CCTV packages: domestic and commercial

1800 247 111/ 03 5427 4411  
sales@24sevenalarms.com.au

**WARNER'S JEWELLERS**  
EST. 1912 ~ 4th Generation Jewellers

*Manufacturing Jewellers*      *Watch & Clock Repairs*  
*Jewellery Repairs*              *Valuations & Rethreading*

Beautiful selection of

**PANDORA™**

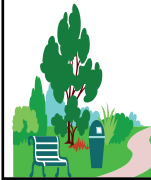
Life has its moments ... make them all unforgettable

97 High Street, Woodend

5427 1573

## Truck & Bobcat Hire

Paving Turfing Rockeries  
Paling & Colourbond Fencing  
Watering Systems Retaining Walls  
All of your garden and driveway  
construction catered for



CD & MC Muir Pty Ltd  
craig@bobcatcraig.com

0417 331 085    5427 3095



# WOODEND MOWERS

• sales • hire •  
• service • repairs •

Try before you buy

**Chainsaws    Brush cutters    Ride-ons**  
**Push mowers    Hedge trimmers**  
**Cultivators    Blowers**

Open Monday To Friday 9am To 5.30pm  
Saturday 9am-4m

No. 5 Dryden Court, North Woodend

Ph: 54 273 116

Mob: 041 352 6761

Stocking Australia's best brands



**Mowers for hire:**

**\$95 per day — Ride On**

**\$35 per day — Push Mower**

**Delivery available**