

THE NEW WOODEND STAR



Circulation of 3190 throughout
Woodend postal district, Newham, Heskett, Ashbourne,
North Woodend, Hanging Rock, Carlsruhe, Cobaw.

AN INITIATIVE OF THE ROTARY CLUB OF WOODEND

November 2010

A Monthly Community Periodical

First Publication 1997

Volume Fourteen No 11

Christmas Carols at Duneira

Celebrates Christmas with carols by the Ensemble Gombert in Duneira's stunning gardens

Melbourne's outstanding chamber choir, Ensemble Gombert, will present a varied program of Christmas carols. In Duneira's stunning garden setting *The Holly and the Ivy*, *O Tannenbaum* and *There is no rose* will be unavoidable. But the old favourites will be there - including favourites from French and German traditions as well as English - and the program will also include some lesser-known carols from mediaeval and modern times.



Bring a picnic blanket and spread out in these gorgeous gardens. Gates open at 3:30pm. on Saturday 18 December 5pm - 6pm at Duneira, Officer Lane Mt Macedon Tickets cost \$20/\$10 family \$40 (2 adults and 3 or more children)

Bookings and inquiries phone 5426 1490 from the website www.duneira.com.au

Proudly brought to you by The S.R. Stoneman Foundation



Rock legend at the Rock

Saturday 21st November saw over 12,000 people descend on Hanging Rock to experience Leonard Cohen perform at this spectacular setting. As the sun descended behind the Rock and the moon rose, Cohen's soothing tones warmed the crowd. Local traders reported a fabulous day with many concert goers taking the opportunity to explore the Macedon Ranges.

The New Woodend Star is proud to present what we hope is the first of many "In the Spotlight" stories, featuring the people that make Woodend special

A coffee with Denise Grantham - "Make it strong!"

Most of us can think back to a point when rather than kick the cat or shout from the rooftops (depending how good or bad the news was), we took the more civilised option and searched for a hot cuppa and a piece of fluffy cream sponge. Most café owners are uniquely positioned to observe the ebb and flow of customer moods and the pulse of the town. At "Maloa House Gourmet Delights," Denise Grantham loves the Friday influx of "Wild Women". The girly groups who stop on their way through for a bit of fun, often returning on Sunday. Denise laughs at these bonds of friendship, and enjoys the interaction with her customers.

Denise and Michael set up home in Woodend and in 1993 began to restore historic "Maloa House" on the corner of High St and Quarry Rd. In a large departure from her previous life, and with two young 'uns at her heels, Denise began her business association with "Wallwood" after completing her second year as an apprentice chef. Cooking at home while the children slept, she later delivered the food onsite to the shop.

When house renovations finished, the Granthams opened their home as a restaurant. In 2000, with the birth of their fourth child imminent, the "Maloa House" business moved into a High Street shopfront, and complimented the catering and restaurant with a gourmet deli. By 2008, the deli was bursting at the seams, in desperate need of expansion. Denise seized an opportunity to move into larger premises.

The happy transition has allowed more staff, and a commercial kitchen to prepare food onsite. It also allows Denise to indulge another love - homewares. Totally separating the business from the house means for the first time in years, home is the sanctuary it's meant to be.

Being the youngest of seven close-knit little South Australians, Denise left school during Year 11, and spent 13 years as a field officer with the South Australian Housing Trust, liaising with families in accommodation crisis. These formative years etched into her a presiding deep-seated social conscience, now borne out in charities she has long supported, including "Ambrose Care" which every week receives donated food parcels from Maloa House's kitchen, and packed at times by the family. "I think it's important for the kids to learn to work and to see those cartons go out every week. To know that life's not a bed of roses for everybody," Denise says

Continued on page 2



New Members

The Rotary Club of Woodend

Put something back into this great community and be part of a worldwide organisation that helps build goodwill and peace allowing ordinary people to achieve extraordinary things and bring about exceptional change in the world.

Contact Brendan 5422 6442

The New Woodend Star

An initiative of the Rotary Club of Woodend Inc.
The Bank, 75 High Street, Woodend, Vic. 3442
ABN 32 685 225 161 No. A0021518E

Layout & printing by Collier Office & Business Assist
EMAIL articles preferred: sales@collierooffice.com.au

Circulation: 3190 copies throughout Woodend and district.

Disclaimer: Articles and comments published in this newspaper are the result of contributions from local groups and relevant news articles pertinent to the Woodend district. Neither the Rotary Club of Woodend Inc., The New Woodend Star nor the editorial team are liable for any mistakes, omissions, or misprints. It prints and makes no representation as to the truth or accuracy of any description, and accepts no liability for any loss suffered by any person who relies on any statement contained herein. The opinions expressed are not necessarily those of the editorial team. The committee reserves the right to omit, reject, cut, alter or otherwise re-work submitted articles to make them suitable.

Committee: Barry Naphthine, Ivor Johnson, Claudia Green, Brendan Watters, Alexia Downie, Sue Macklin & Jane Watters

Closing date for inclusion of articles or advertising for each issue is the 15th of the month prior to publication

Information for advertisers

All rates include GST & are priced per month. Prices for advertising 2011

- Business card (55mm x 90mm) \$49 inc GST
- Trade Page \$35 inc GST
- Quarter page (90mm x 134mm)..... \$100 inc GST
- Half page (134mm x 190mm)..... \$185 inc GST
- Full page (190mm x 277mm) \$315 inc GST
- Insert (of your printed brochure)..... \$230 inc GST

Advertisers: Please note – it is in your interest to book and pay for a year in advance, as a 10% discount applies to any full year pre-paid booking. Any existing pre-paid ads will revert to the new rate on completion of the pre-paid period.

Advertising bookings to be made with Alexia Downie on 5427 3092 or sales@collierooffice.com.au. Accounts queries can be made to Sue on 5427 4089 during office hours or nws@johnsonwoodend.com.au Mail should be directed to: New Woodend Star, C/- The Bank, 75 High Street, Woodend 3442.

Woodend Star Publication Dates for 2011

February	Jan 31 st	July	June 27 th
March	Feb 28 th	August	August 1 st
April	March 28 th	September	August 29 th
May	May 2 nd	October	October 3 rd
June	May 30 th	November	October 24 th
		December	November 28 th

Changes to advertisements, new advertisements or cancellations must all be made by email or in writing. All advertisements will be placed and charged for until notified otherwise.

SUBSCRIBE TO THE NEW WOODEND STAR

Do you live outside the New Woodend Star distribution area? Be sure to receive your copy every month by subscribing. A yearly subscription of 11 issues is just \$27.50. Post to New Woodend Star, C/- The Bank, 75 High Street, Woodend 3442.

Name: _____

Address: _____

Phone: _____

Enclosed: Cheque/Money Order for \$27.50

Continued from page 1

gently. Quiet contributions to local projects, and a long running commitment by the family to a successful regional basketball competition based in Woodend, (including supporting all abilities basketball), follow the philosophy of responsibility to community. This parallel life is where you'll get a discussion with Denise that is even more passionate than her business dealings. But a busy café is no place to discuss such matters, and most people are asking "what about the Bentinck?"

In an energetic surge that would leave most of us scouring for a Bex and a lie down, Denise saw the recent purchase of "The Bentinck" as a business challenge. Plans are to restructure, restaff, improve facilities, provide in-house training and a fresh look. The remaining piece in the puzzle is to secure another great chef to join Erica Crowther. The lure for such a beast might be the ability to work at The Bentinck, Maloa House, offsite with catering jobs, or up the Mount on the catering contract for LinFox's conference centre. The Bentinck will continue with conferences and functions, but despite the enormous potential, isn't looking to the leisure market at this stage.

Enthused when setting up for a wedding recently, Maloa staff Klem and Karan were dispatched by their boss to enjoy The Bentinck's beautiful gardens. It was like 'Old Home Week' for Karen Wornes who spent many years there as a gardener.

"I am satisfied being in business. I love the buzz, the challenge of sourcing products, building customer rapport and being really busy. It's also very social," Denise says. And the secret to winding down? Well there's a monthly card game called Kaniva, where talk is optional, but competitiveness and a cold beer is compulsory.

By Kathy Mexted, Freelance Writer. 0403 927-940

BEAUTY IN TOUCH

Classical Beauty Therapist – Kerry Robinson

- Deep Cleansing Facials ▪
- Waxing ▪ Manicures ▪ Pedicures ▪
- Eyelash tinting ▪

Please call 0412 479 901 for an appointment
40A South Road, Woodend

Sarah Bradley
Foot Carer

Tel. 54223705
Mobile: 0428386540
Medical Centre and Home visits

Nails trimmed, burred, corns,
callous removed etc.

75 High Street
Westpac Building
Woodend



Late Night Shopping

Dont forget!- This Thursday 2nd December

Local traders across Woodend will open late on Thursday December 2nd. Purchase your ticket for \$5 from Blue Orange Concepts, New Leaves, Pink String, Zappa Do, Carasmatic or Collier Office & Business Assist to be eligible for some great discounts and deals on the night.

Previous years have shown this night to be great fun, with this being a once a year event, don't miss it!

Your donation from purchasing a ticket will be go to the Woodend Youth Music Collective, who aim to purchase musical instruments to enable all children to participate. Also available are tickets to win a hamper filled with fabulous products from the local stores.

By taking advantage of this late night trading event, you are supporting both local traders and a local charity.

Submitted by Alexia Downie



Woodend Video Library
65 High Street, Woodend
Ph: 54274011
For updates on new releases check out our Facebook Group Page

WOODEND
Proud to be Pokie-free

Woodend Rainfall Report 2010

Each month we add the rainfall details and the year to date total. Our rainfall report shows, 2005, 2006 2007 2008 2009 and 2010 comparisons. Please note that your own rainfall readings may not exactly match these.

	2005	2006	2007	2008	2009	2010	
January	47.4	49.8	83.5	17.1	0.08*	54*	Jan
February	72.2	53.1	27.4	22.1	2.5*	71.5*	Feb
March	5.8	20.6	35.7	25.4	42.5*	121*	Mar
April	18.8	46.4	20.2	20.4	51*	45	April
May	13.6	58.8	95.7	43.7	30.5*	39	May
June	116.7	36.0	105.1	88.7	66.5*	98.5	June
July	76.9	91.6	83.3	112.5	76.5*	87.5	July
August	125.0	30.8	34.8	52.2	107.5*	148.5	Aug
Sept	55.2	50.6	49.8	42.0*	88.5*	97	Sept
Oct	49.8	5.2	12.1	13.0*	46*	154.5	Oct
Nov	72.4	13.0	91.0	67.2	99*		Nov
Dec	40.0	31.0	101.2	96.0*	60*		Dec
YTD:	693.8	486.9	739.8	600.3	670.5	916	YTD

.Figures for 2008, 2009 & 2010 include information from a different location indicated by *.
For the year of 2009 there was rainfall of **670.5mm**
1 inch = 25.4 mm therefore the total year to date is 30 inches



Shop 5, 130 High Street
Woodend
5427 3092

Feeling frustrated by your computer ?

- Complete PC Troubleshooting
- Virus Removal and Protection
- Hardware Repairs
- Custom Built Systems, Hardware and Software
- Basic Computer Training



Trust Colliers for all your home or business Computer and I.T. needs

Cambodian Kids Festival

After the success of last years CKF Festival we have decided to hold another one on Saturday 18th December 10am - 6pm. Live Music Starts from Midday official line up includes: Brother Johnstone, Dead River Deeps, Nick Barker, Woodend Youth Music Collectives! All awesome groups supporting CKF

On the day there will be a heap of stuff available including...Fairy Floss, Burgers, Snags, Slurpees, Cakes, Muffins, Curries, Coffee, Tea, Hot Chocolate, Popcorn, BBQ lunch && More!

Also lots of Games, Face Painting, Fun Merch Stall, Dog Massage tent, Color Me Cooper Closet, Breakdancing demos, balloons, Clowns, Jumping Castles & more

Heaps of fun, bring the whole family! All money raised from food & other things goes directly to the Cambodian Kids Foundation! www.cambodiankidsfoundation.com

Now Available

LARGE OFFICE SPACE

AT

75 HIGH STREET

Fully Air Conditioned
Natural Light
Kitchen Facilities

CONTACT
IVOR JOHNSON
TELEPHONE 5427 4089
MOBILE 0407273961
OR
ENQUIRE WITHIN



1st Woodend Scout Group

This Term, the young members of the Group have continued to enjoy the weekly programs and special events organized by the Leaders, while learning new skills and having lots of fun in the process. As a Group, our strong ties with other Community Groups continue and we recently commenced a joint project with the Woodend Landcare Group:

"The 1st Woodend Scout Group has adopted a Creek-side site near their scout hall. So far, they have attended three Landcare working bees and helped plant 250 shrubs and grasses. Soon, they will be learning to maintain the area themselves, which will gain the participants their Landcare Badges. It is terrific to have young people (and their parents) involved in community work. All the youngsters were full of beans and keen to help. The adults had trouble keeping up with their enthusiasm." Jo Clancy, President, Woodend Landcare.

At Woodend, we offer Scouting for children of all ages and our meetings are as follows:

Joey Scouts 6 – 8 years, Tuesday 5.30pm – 6.30pm

Cub Scouts 8 – 11 years Tuesday, 7.00pm – 8.30pm

Wednesday 6.30pm – 8.00pm; Scouts 11 – 15 years, Friday 7.30pm – 9.30pm, Monday 7.00pm – 9.00pm (from Term 1, 2011); Venturer Scouts 15 – 18 years Friday 8.00pm – 10.00pm

Our final Group Event this year will be singing in the



Lions Carols by Candlelight Community Event on Sunday 12th December and we hope to see you there.

I'd like to take this opportunity to wish all our families, our youth members, leaders and supporters, our thanks for all your hard work in making 2010 a great year for Scouting in Woodend. We look forward to welcoming more families to our Group in 2011.

Jenny Johnson, Group Leader, 1st Woodend Scout Group.
For membership enquiries, please contact me on 5427 4968 or jenniferj10@bigpond.com

GARAGE DOORS

ELECTRIC GATES • SOLAR GATES
SELF OPENING GLASS DOORS

Ken Ross

0427 661 543 5422 7507

Central Highlands Doors & Gates

Serving Kyneton & Woodend

Woodend Lions

Woodend Lions Village Markets

The Woodend Lions Village Markets have begun again, In spite of the damp weather both the September and October markets were a great success. Most of the regular stalls are back and there are a number of new stalls this year.

Market Dates

Nov 21; Dec 19; Jan 16; Feb 20; Mar 20; Apr 17; May 15.

Market enquiries and bookings: Ailsa Howe 5427 2321

Please Note: As for the last year, the market will be automatically cancelled on days with a fire danger rating of extreme or catastrophic.

Carols by candlelight

Rear of the community hall from 6pm Sunday 12th December. Woodend Lions annual Carols by candlelight have always been a great success and we hope this year will be also. As usual, Lions will provide a free sausage sizzle and will have programs and candles for sale. Come along and support this free community event.

Lions Meetings

Lions meetings are held at the Victorian Hotel at 7.30pm on the second and fourth Wednesdays of the month. New members are always welcome. For enquiries or membership details, please phone one of the following: President: Wally Robbins 5427 1342 Secretary: Robyn Robbins 5427 1342 Treasurer: Terry Bowles 5427 0505

Submitted by Jillian Elwin 5427 4678

Lachlan Fleming
CONSTRUCTIONS PT
SERVICING THE MACEDON RANGES
0401 499 898
**EXTENSIONS
RENOVATIONS
NEW HOMES**

REGISTERED Building Practitioner

Master Builder

All news items, articles and community news columns must be received by 15th of each month.

GARAGE DOORS

ELECTRIC GATES • SOLAR GATES
SELF OPENING GLASS DOORS

Ken Ross

0427 661 543 5422 7507

Central Highlands Doors & Gates

Serving Kyneton & Woodend

ADVANCED EQUINE DENTISTRY

Dr Shannon Lee BVSc

0418 598 621

we come to YOU!

Winner 2009 Macedon Ranges Business Excellence Awards for Young Business Person & Professional Services categories

Mobile services for Macedon Ranges
www.advancedequinedentistry.com.au

Christmas Toy Shop

For the last six years Cobaw Community Health has held a Christmas "Toy Shop", for families living in the Macedon Ranges Shire who are struggling to afford Christmas gifts for their children. The Toy Shop has provided gifts to approximately 100 families or 250 children from across the Macedon Ranges.

In the past the Brotherhood of St Laurence has been the main provider of gifts which they obtained from the Kmart Christmas Appeal. The shop was further supported by the Uniting Church Woodend, Target tree appeal, churches from across the shire, Probud and direct donations from the service clubs and members of our community.

The Brotherhood of St Laurence is no longer able to support the Toy Shop as the Kmart toys are now going to the Salvation Army for distribution. Without any toy donations, the Toy Shop was threatened with permanent closure, with many families in our community going without this special program. The local church community has seen that this is an invaluable outlet for many families and has agreed to co-ordinate the toy shop this year with the support of Cobaw Community Health.

In the absence of a major donator, this year Cobaw Community Health and the Combined Churches of the Macedon Ranges are really calling on the local community to support this program. To reach out in the spirit of generosity and love to take care of some of the most vulnerable people in our community. We require the donation of approximately 250 -300 toys, each at around \$20 value. The gifts are for boys and girls, ages 0-12.

How to donate

The Uniting Church and Target are again running "Operation Santa" and have kindly agreed to donate all toys from the Target Woodend Tree to the Toy Shop. Members of the public can donate by locating the Operation Santa Christmas tree in the Target store, taking a gift tag off the tree and buying a gift to leave under the tree. Alternatively, gift cards can be purchased from Target checkouts.

The combined churches of Kyneton are hosting a special Christmas service on Sunday 28th November, 5pm at Kyneton Baptist Church to explore the true meaning of Christmas. There will be an opportunity for members of the public to donate gifts during this special service. All toys donated will go directly to the Toy Shop.

Donations will also be received at Cobaw Community Health in Kyneton and Woodend.

Hollybush Cottage Management ("HCM")

provides a turnkey solution to convert, promote and manage unoccupied dwellings on your property to create an income producing asset.

Macedon Ranges has a shortage of short-term holiday accommodation beds and needs more properties in the region to service growing demand.

If you own a building that could be suitable as a short-term rental property and want a new source of income please call Amanda on 0413-832 549 or email amanda@hollybush.com.au

www.hollybush.com.au

Kerri Hendriks

House cleaning

Looking for permanent work

Weekdays from 9am - 5pm

\$20 per hour

Minimum 3 hours cleaning

Please note no equipment or cleaning products supplied

Call Kerri 0403 685 060

Donations of both gifts and money (to purchase gifts) will be gratefully received. Gifts need to be received by 10th December, to allow time for sorting and setting up of the Toy Shop. All Enquiries: Emily Townsend 0409 213 757 or Georgina Harvey 0404 442 891

Help HeartKids Support Families

In January this year, our 4 year old son, Dier Crosbie, had lifesaving open heart surgery. A long and serious procedure we knew was a possibility since he was 12 weeks old. After a week at the Royal Childrens' Hospital, Cardiac ward (7west), we were able to bring him home to Woodend. After a further 6 weeks, while we waited for his sternum to heal, he was able to attend 4 year kinder. It was a very exciting day for all!

Without the wonderful team of doctors, nurses, admin staff and HeartKids, our son's easy journey to recovery would not have been possible. Words cannot describe how thankful we are!

Not only did we experience firsthand the affects Childhood Heart Disease (CHD) has on a family, but I also get to see it from the other side of the desk. I work for Cardiology, at the Hospital and for HeartKids Victoria Inc.

About Heart Kids:

HeartKids is a not-for-profit 'support group for families of children with heart disease, be it congenital (born with) or acquired. HeartKids started as voluntary group of parents and individuals dealing with and concerned about the day to day realities of raising and caring for children with cardiac conditions, and sometimes dealing with the loss of a child due to their heart defect. HeartKids has grown to an organisation of strength with a presence in almost every state of Australia, as well as a National body – HeartKids Australia.

continued on page 6

Kirsty Nuttall

MACEDON RANGES PICTURE FRAMING SERVICE

By appointment only
Phone/Fax: 5427 3511
Mobile: 0417 337 857

HeartKids members wish to offer their support to other families who are in crisis, providing opportunities to share common anxieties and challenges. HeartKids arrange, where possible, to meet with other families affected by the impact of life with a child with a cardiac condition and to create a network of support for all families.'

Recently, Bourkies' Bakehouse has offered an ongoing donation to assist in catering our weekly morning teas held at the RCH, which is currently catered by myself. Our morning teas' offer an opportunity for parents to talk to one another about their experiences and have a break from the ward, which many call home. Some families can be living at the RCH or Ronald McDonald House for months at a time. Many awaiting transplant, which leads to months upon months at the RCH. Others come from all around Australia and the World; have no friends or family around them. These morning teas help to create a much needed network of support for these families.

Coming up to Christmas and as there are numerous families in our local community with children who have Cardiac issues, I would like to help HeartKids on their mission to raise awareness, support, advocacy and research on CHD.

You too can help our family thank the Cardiac Ward and HeartKids by making donations in the following ways:- clothing for parents or children (new or second hand); toiletries; furnishings (HeartKids have two apartments provided free of charge to long term families); food; toys (new or second hand); vouchers (food or even entertainment to give parents a much needed break); organise fundraisers at your work or school; display posters in your work place.

If you would like to give financial donations, purchase merchandise, check out statistics or view upcoming events and campaigns, details can be found on the website www.heartkidsvic.org.au.

To organise drop off or collection of donations, please call Amy Emmett on 0411 55 22 64.

Submitted by Amy Emmett

Seventh_Day Adventist Church

Don't spend Christmas alone!!

Please join us for a special Christmas Celebration and lunch at the AdLife Community Centre at 10 Victoria St. Kyneton. Cost: \$10 per person – concession available. Booking essential – Phone 0428 506 036

Submitted by Bosilka Lipkovich

Woodend Massage & Natural Therapies



Massage makes a fabulous gift....
Spoil yourself or someone special this Christmas

Di Hall 0403 373 731
Natalie Taranto 0402 534 983
70 High Street Woodend

ZAP YOUR XMAS LIST



We have lots of great gift ideas in store, so come in and be really inspired for your Christmas shopping. Pre-Christmas Hours Mon-Fri 9.30am-5pm and Sat & Sun 10am-4pm.

Don't miss late night shopping Thurs Dec 2
Ticket-holders get 10% discount storewide

ZAPPA-do *Baby and You!*
Shop 3, 87 High Street, Woodend. Ph: 5427 1270
or visit our new website at: www.zappado.com.au

WOODEND

Proud to be Pokie-free

BodyMinding *Alexander Technique*
alexander technique: an education for living well.

Alexander Technique

Reduce, manage or eliminate stress headaches, muscle and joint pain. The Alexander Technique addresses the underlying problems and puts you back into control for yourself.

Margaret McGill has been teaching Alexander Technique for more than 20 years.

Contact Margaret on **5428 6461**

Meta Massage

SPORTS/REMEDIAL MASSAGE, SHIATSU, REIKI
Raymond White

Telephone 0411 268 336

for an appointment

18 years experience • Chronic and acute conditions
Sports injuries • Rehab work

The End is Silently Nigh

It's the last kinder concert. I mean the last for me. The "baby" tells me she's a "big girl" now, ready for skool - and I suppose she's right. Big enough to go to the zoo, but baby enough to describe the lion, in all seriousness, as "not having a very big raah".

The Kinder instructions have been issued. "Concert on 15 Dec. Girls dressed as angels, boys dressed as shepherds", or some version thereof. So how do we dress an angel? A white sheet with a gold cord at the waist. Sandals. A coat hangar around the head for the halo. A box of tissues for mum.

The Christmas concert is a good time to reflect on 13 years since first presenting an offspring for Steph to ship into shape. It was more like riot control. I was told one day, "You've got wattle all through your hair". "Yes", came the terse reply. "he didn't want to go this morning, and I had the undignified task of plucking him out from under the wattle tree in the kinder yard". I can still see the look on Koula's face! That tree has grown a lot, and the girls have a little less "raah" than their brother did, but shrieking boys, closely followed by shrieking mothers, still go there.

Rules. Gotta have rules at Kinder, and after the first day for No 1 daughter, the mothers eagerly awaited feedback. The young group announced importantly, "well, Number one is No Facking Fumbs (sucking thumbs). Number two is No Picking Noses. Number 3. No hitting..." We never heard number four. We were still reeling from number one.

It's also 12 years since, at the end of the concert, we hauled Steph off to the pub for a cold cordial to say "Thanks for telling us that it would all be OK." It seems so long ago. The pub is now a brewhouse, the swamp is a playground, and the cafes are coffee shops. As the last is lining up for Silent Night, "Wattle Boy" is getting his L Plates! It's not over yet.

Merry Christmas everyone. May your gardens bear many flowers, and your singing angels not be distracted by Highlands FM tuning in through the halo. See you next year for another round.

Stephanie Goss has been teaching at Woodend Kinder about 25 years. In her spare time she paints beautiful botanical art to steady the nerves.

Submitted by Kathy Mexted

Rotary cleans up

The Rotary Club of Woodend recently conducted the cemetery clean-up and Halloween event on Sunday October 31.

As part of our local commitment to the community the Rotary club has participated in the Woodend cemetery clean for many years. Fifteen people consisting of Rotarians and Woodend Venturers attended the clean up. With lawn mowers, whipper snipers roaring, with others pulling weeds and tree pruning and other general tidying up activities. The cemetery trust had sprayed the weeds a few weeks earlier making the tasks easier on the day. Congratulations to everyone who helped.

Traditionally, cemeteries are cleaned up and tended on 31st of October, the eve of All Saints Day. Based on a Celtic and Scandinavian tradition of acknowledging the end of the growth and harvesting season and to acknowledge and respect those that would not be with the family during the long winter.

Following the clean up Rotarians were again active in coordinating the Community Halloween event at the Woodend Childrens Park. It was an outstanding event. An estimated 250 people were at the park. All of the children and many of the adults were dressed up with some going to great lengths for their costumes. Sausages and lolly bags were provided free to all that attended. The crowd was huge and the park full. Even the Rotarians got dressed up.

It was the anniversary of the opening of the Woodend Childrens Park and many of the original committee were elated to see the park used in such a community minded activity.

The Rotary club intends to continue this event into the future and looks forward to a bigger attendance next year.

Submitted by Grant Hocking



ENJOY YOUR PRECIOUS WEEKENDS

TERRY'S GROUND CREW
MOWING & MAINTENANCE
0400 909 303

MACEDON RANGES VOUCHERS ACCEPTED
GET READY FOR SPRING AND SUMMER

SMALL ACREAGE SPECIALISTS



REGISTERED BUILDING PRACTITIONER (Est. 1992)

SPECIALISING IN:

- Renovations & Specialist Carpentry Work
- Heritage Building
- Pergolas & Decks
- All General Home Maintenance
- Prompt & Reliable Service
- 10 years based in macedon ranges & surrounds

For a free estimate phone Darren - 0438 756 231/5427 2215

Woodend Senior Citizens

Friday: Carpet Bowls 10.30am, Cards 1.30pm. General Meeting and Trading Table; Friday 3rd December 2010 at 11.00am followed by Lunch (bring your own) then a fun afternoon and cards at 1.30pm. Christmas, New Year Break; Bingo finishes Tuesday 14th December and resumes Tuesday 11th January 2011. Cards finish Friday 17th December and resume Friday 7th January 2011. Members Christmas Dinner- Friday 10th December 2010 at 11.30am for 12 noon. Please book and pay by Friday 26th November. First Meeting and Trading Table for 2011- Friday 4th February at 11.00am and Bus Trip to be arranged. Seasons Greetings to all Members, wishing you good health and happiness in 2011.

Submitted by Alma Warnock, Pres.

WOODEND MOWERS

• sales • hire •
• service • repairs •

Try before you buy

Chainsaws Brush cutters Ride-ons
Push mowers Hedge trimmers
Cultivators Blowers

Open Monday To Friday 9am To 5.30pm
Saturday 9am-4m

No. 5 Dryden Court, North Woodend

Ph: 54 273 116

Mob: 041 352 6761

Stocking Australia's best brands



Mowers for hire:

\$95 per day — Ride On

\$35 per day — Push Mower

Delivery available

WARNER'S JEWELLERS

EST. 1912 ~ 4th Generation Jewellers

Manufacturing Jewellers Watch & Clock Repairs
Jewellery Repairs Valuations & Rethreading

Beautiful selection of

PANDORA™
I like the moments make them all unforgettable

97 High Street, Woodend

5427 1573



★ * Polaris
* Financial Services Pty Ltd

1605/530 Lt Collins St Melbourne Vic 3000
Tel 9629 4979 & 9629 4975 Fax 9629 4973

Strategic Financial Planning - Holistic Appropriate Financial Advice

Our comprehensive services

are available in the Macedon Ranges.

- **Strategic financial advice.**
- **Tax effective savings strategies**
- **Social security specialist**
- **Retirement & Superannuation**
- **Wealth protection & Insurances**
- **Financial life strategies**
- **Self Managed Superannuation Funds**

Polaris welcomes your enquiries and there is no cost for an initial one hour appointment. Over this initial hour we discuss your personal needs and objectives and from there, work with you towards the most appropriate financial strategic plan.

Local by appointment only, Macedon Ranges Business Centre, High St Woodend
Call Anneliese to book 0413 373 884

Polaris Financial Services Pty Ltd ABN 99 13110 5514
Is a corporate Authorised Representative (No. 327962) of
Australian Financial Services Ltd (AFSL 297239).
Anneliese Willmott Adv Dip FS (FP) is an Authorised Representative
(No. 268440) of Australian Financial Services Pty Ltd AFSL 297239.

Ruby Pickles

Handmade ♦ Organic ♦ Unique



Visit our webstore where you'll find

Mobiles, Money Boxes,
Bookends & Coat Hooks
all handmade in Woodend

Organic + fair trade, soy,
bamboo & cotton childrens
clothing sizes birth to 3yr

Recycled cardboard, cloth
and wooden toys

rubypickles.com.au

Woodend Star Readers Offer

Receive 10% off* your purchase when you enter 'woodend star' in coupon box upon checkout

*discount applies to product only

Rotary Luncheon A Success

The Rotary Club of Woodend held another successful Luncheon on Friday afternoon 19 November. This event has been held for the past 4 years raising funds for the Rotary club which are in turn allocated to various projects. On this occasion the money raised will be donated equally to the Woodend Scout Group and Woodend YouthSpace.

Rotary Community director Grant Hocking stated thanks must go to Melissa Hocking who arranged the event coordinating all the catering and raffle prizes and to everyone who helped by providing food. Special thanks also to Leisa Macartney for once again making her house and garden available for the luncheon. Woodend Rotary acknowledged this support over many years with President Brendan Watters presenting Leisa with an honorary membership to the Rotary club.

The weather was brilliant and the attendance at an all time high with in excess of 60 people attending. It was a fantastic event with everyone enjoying champagne and the savoury and sweet treats on offer.

For information on Woodend Rotary Projects or membership please visit our website <http://rotarywoodend.org.au/>

Submitted by Grant Hocking

CASTLEMAINE—GISBORNE

CLEANING SERVICE

CHRISTINE ADAMS, FRYERS ROAD, ELPHINSTONE 3448

Carpet Cleaning Specialists Duct Cleaning, Window Cleaning, etc.

For all your cleaning requirements

- no job too big or too small -
obligation-free quotes

Tel: 5473 3307 Fax: 5473 3310

Mobile: 0419 006 591

Massage Pilates Remedial Rehabilitation

with Pamela Kell

By appointment
22 Goode Street
Gisborne
5428 1000
0408 093 098

Assisting in the repair and maintenance
of your body

10\$ Shouldn't Buy a Tee-Shirt.

A study of the conventional cotton farming industry in India is a revealing insight into the global market for cotton and a shattering experience according to Natalie Dillon, Marketing Director of 3Fish, the fastest growing fairtrade clothing company is Woodend. "A \$10 T-shirt on the streets of Melbourne highlights the disparity, and implicates us all" says Natalie.

The start of the story is a story found the world over; you have a family and you only want the best for them. You want to provide a good, healthy life, and you want to provide opportunity for your children. But, for a moment, imagine you are subsistence farmer in India. You support your family, just. Then the world's demand for cotton catches up with your corner of the world, and with the promise of gold at the end of the rainbow you jump on the bandwagon and turn your crops to "conventional" cotton.

But like all rainbows the glory is a transient moving feast, and the pot of gold an illusion. In its place, a slippery slide of debt, degradation and family and community breakdown. Common goals, worlds apart.

No-one tells that new cotton farmer in India that the industry they have just entered is largely controlled by middlemen and large chemical companies. No-one explains the full implications of the cotton seed they have just planted that has been genetically modified so that it terminates after one season. There used to be hundreds of varieties of cotton seed available, however companies who "own" the seeds have reduced these down to about 10, modified so that instead of re-seeding year after year, they terminate after one, requiring the cotton farmer to purchase another season of seed, every season. No-one tells that farmer that the fertilisers that are "required" to grow the seed degrade the soil to the extent that next season

continued on page 10



new
leaves



read & wonder

Need something special for Christmas?

Come in and browse our ever-changing range, or order early for those hard-to-find titles

We welcome Special Orders and Lay-Bys, and Gift Vouchers are available.

Cnr Anslow & Collier Sts, Woodend
5427 3772
Closed Mondays



Kwik Kerb
CONTINUOUS CONCRETE EDGING
BY EXCLUSIVE MACHINE

Specialising in:

**CAR PARK KERBS • ASPHALT EDGING
GARDEN EDGING • VARIOUS PROFILES
REPAIR WORK**



IAN
0409 443 036

and thereafter they will require increasing volumes of the fertilisers at increasing prices to achieve the same or lesser yields.

That farmer is told that certain pesticides are “required” to achieve the yields they require. Many of the farmers can’t read how toxic those chemicals are or the fact that they won’t necessarily repel all the bugs they expect. The farmers spray day after day, the chemicals splashing over their skin posing serious health risks, and the winds blow the chemicals onto their food crops, thereby forcing their way into their food chain. And when one pesticide doesn’t work, the farmer goes back to the same company who sold them the seed, the fertiliser and the other varieties of pesticides to be pointed toward a new stronger chemical. All the while adding to their debt with the trader or middleman.

If a crop fails and they are unable to pay their debt, then the debt cycle begins. They need more seed, more fertiliser, more pesticides, and over time the soil gets worse and their yields decline. More seeds, more fertiliser and more pesticide. More debt. Farmer suicides. A lot of farmer suicides.

All to supply the cotton for that \$10 T-shirt. Suddenly it really isn’t the latest must have item. It is a millstone around your neck.

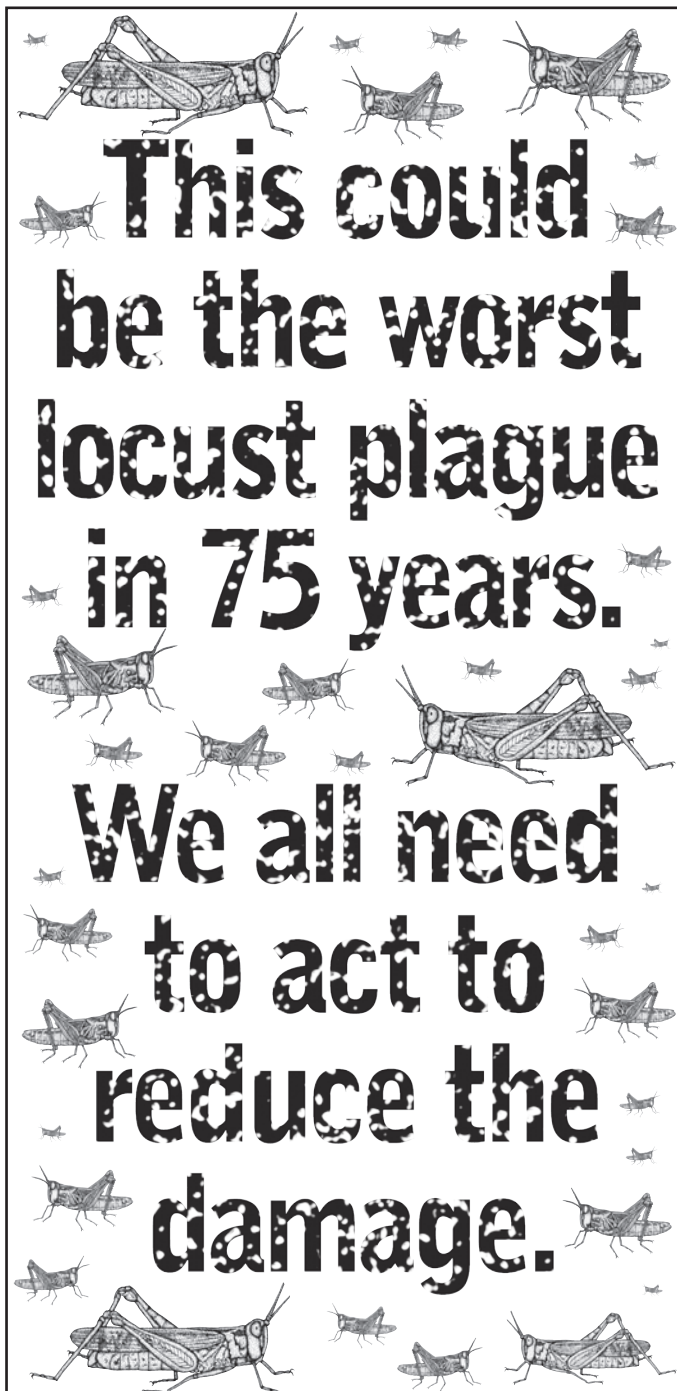
One of the absolutely critical ways of turning this caravan of pain around, is to direct the Fairtrade premium into the education of farmers toward organic farming methods.

Instead of being at the mercy of the traders or various middlemen who push a wide variety of products from major chemical companies, Fairtrade organic farming methods enable farmers to take control of their input costs and are also significantly better for the environment. Farmers are shown how to use cow dung and urine as fertiliser, the oil from the indigenous and prolific Neem tree is mixed to make a natural (and free) pesticide and genetically modified seed is banned. Soil quality improves. Yields improve. Farmers receive a fixed price for their crop and debt cycles are halted. Families can be provided for by their own hand, opportunities are created, and communities flourish. The relative prosperity of the Fairtrade organic farmer is noted, and inspires others to change.

It is our responsibility at the other side of the world to embrace the true cost of the production of products, and create a consistent and ongoing market for them. Whenever possible we must choose Fairtrade and look critically at the cost of our goods and stop to consider how it can be that a particular product can be bought at a particular price. In this way we use the same market forces that gave rise to “conventional” cotton to drive growth in a more positive and ethically fair manner.

To learn more about “The Conventional Trap” go to http://3fish.com.au/index.php?main_page=earthfriendly

Submitted by Natalie Dillon



Scientists estimate that Victoria could be facing the worst locust plague since the 1930s. To help reduce the damage, there are things we all need to do. Monitor your property. Farmers and other landholders have a legal responsibility to report egg beds and locust activity to the Department of Primary Industries (DPI), and to chemically treat locusts on their land.

The Victorian Government is providing a 100% rebate on the chemicals listed for locust treatment. The Government has ordered \$4.2 million worth of chemicals to treat locusts on public land. You need to prepare to chemically treat locusts on your land. Seek advice from chemical suppliers and agronomists about the most appropriate chemicals for your situation.

DPI has developed a new online tool that will help inform landholders about the range and use of chemicals. Meetings are also being held to ensure an effective collaboration between government and landholders.

Remember, you must monitor your property and report any activity urgently to the DPI Locust Hotline **1300 135 559** or visit **dpi.vic.gov.au/locusts**



Locust control starts at your place.

DPI0078_TNW_75



Accountants, Advisors & Planners

Office Locations:
111 High Street, Woodend Ph: 03 5427 8000
2/19 Bourke Street, Kilmore Ph: 03 5782 1273
email: admin@riverwoodgroup.com.au
website: www.riverwoodgroup.com.au

Riverwood Group can offer a *Total Financial Solutions* package for you and your family. Take a look at some of the services we provide:

Taxation

All your taxation requirements to suit individuals and small businesses.

Investments to Create & Protect your Wealth

Managed Funds, Indexed Funds, margin Lending and more

Planning for Retirement

Allocated Pensions, Centrelink Benefits and Payments

Stockbroking

Recommended lists, broking facility available, share updates

Superannuation & Rollovers

Advice, placements, Self-Managed Super Funds and Eligible Termination Payment Advice

Other Services

Home & Investment Loans, Business Loans and Leasing, Income Protection, Life Insurance, Professional Indemnity, Estate Planning and more.

Regular business card advertisements (90mm x 55mm) are \$49 inc GST per month - book & pay 11 months and get 10% off.

jigsawstairs@optusnet.com.au

0408 153 124

JIGSAW STAIRCASES

P.O Box 93 Woodend Vic 3442

Quality Blinds at factory direct prices

- Sunscreen/Blockout Blind
- Latest Styles/Fabrics/Colours
- Automated Blinds
- Roller/Roman Blinds/Venetians
- Exterior Awnings
- Professional Installation Team

Ring Now for a **Free** In House Consultation/Quotation

Mark 0437 759013

Simon 0458 338995

Contemporary Blinds
Where Style is Affordable

Can you help?

Pets Haven Pro Life Animal Shelter is a facility that re-homes orphan cats, kittens and dogs and puppies who would otherwise have no future

Animals are rescued from death row pounds and are kept at the shelter while waiting to be adopted into a new home. Meet Milo, he's a small male maltese blend dog

Milo was saved from a puppy farm [he kind of looked like a Westie Blend] aged approximatly 2, Milo has been desexed and has basic obedience training

Milo is a beautiful man who needs a loving home.

If you can help, please call Pets Haven Animal Shelter on 54273603 or shelter@petshaven.com.au



Many fabulous furkids like Milo are awaiting adoption at Pets Haven but while they wait for their new families to find them there are a few items they could really use, as could we!

There are lots of expenses day to day some of these include kitty litter, wet and dry food, toys, cat scratching posts, beds, treats, worming/flea products, office supplies, cleaning supplies, the list never seems to end! Our October veterinary bill was \$26,000! We really need your donations, whether they're large or small. This Christmas we've posted our Wish list. Please help us in anyway you can:

- People to adopt from us and tell everyone they meet about us and what we do
- A 6-8 Berth Dog Trailer for rescuing and transporting animals from pounds
- Volunteers to cuddle our furry friends while they wait for their new homes
- Foster carers to care for mothers and babies
- Money- this pays for everything including vet bills, ongoing medication, water, gas, electricity, heating and cooling for the animals, the list goes on and on
- Wet food - dry food
- Powdered kitten/puppy replacement milk
- Blankets / Bedding & Towels
- Animal Medications / Bandages
- Stationery (paper, pens, staplers, staples, plastic pockets and so on)
- Kitchen type cleaning products

Merry Christmas from the staff and Furkids at Pets Haven

WOODEND COMPUTER SERVICE

Sales - Service - Training & Help

THE BANK - OFFICE 3 - 75 HIGH ST WOODEND
JASON JOHNSON - 0400528129
pcs@live.com.au

Rasputin's

wine bar • restaurant • gallery

Thursday to Sunday

5426 3700

info@rasputinbar.com.au

40 Victoria Street, Macedon

Space is still available
in
The New Woodend
Star.

Great exposure at just

\$49 per issue.

Call Alexia for further information 5427 3092



mrbc

MACEDON RANGES BUSINESS CENTRE

1st Floor, 105 High Street, Woodend

03 5460 8404

www.mrbuscentre.com.au



kitchen cook table home
Blue Orange Concepts

December trading hours

Monday - Sunday

9am - 6pm

Shop 2
Telephone

120 High Street, Woodend 3442
03 5427 4800

Open 7 days



FAIRHURST CONVEYANCING

and Secretarial Services

For all your

Property Transfers

Ring Sue Fairhurst on

5427 2382

27 Urquhart Street, Woodend

MVCA & AIC

Equipment for Hire

The Rotary Club of Woodend offers the following equipment for hire. to locals and other community groups

- Soundart PA System \$250
- Data Projector and Screen set \$100
- Marquee \$50
- Chairs (4) and Tables (2) \$20

Rates are inclusive of 24 hour period. Discounted options available for long term rates A security deposit of \$400 is required. Please contact Eb Friedrich 5427 1629

HMS Pinafore -

Calling all Gilbert and Sullivan fans!

Kyneton Theatre Company are calling all singers and actors in the local community who may be interested in taking part in performing the droll, original wit, and unexpected whimsicality of Gilbert and Sullivan's 'HMS Pinafore'.

An information night will be held at 7.30 pm on the 6th of December 2010 at The Bluestone Theatre, Hutton Street, Kyneton. Come along and meet the Director of the show, Frances Kelly, and the Musical Director, Peter Weerts, who will provide information with regard to the audition process, rehearsal schedule and performance dates.

Attendees will then be invited to join Frances, Peter and representatives of the Kyneton Theatre Company committee for light refreshments. Auditions will be held the 8th and 9th of January, 2011 with performances scheduled for late April. For more information please do not hesitate to contact Frances on 5427 4210 or Bronwyn on 5427 4011.

Your Memories to DVD

- * 8 mm/16 mm Films
- * Mini DV
- * Compact VHS
- * VHS

Discount for Quantity



Top Hat Productions

Ph: 5422 3930

All news items, articles and community news columns must be received by 15th of each month.

Woodend RSL Women's Auxiliary

As this is our final letter for 2010 I will take the opportunity to wish one and all a very Merry Christmas and a bright New Year.

Our thanks also to our many supporters who have regularly attended our dinners and bought raffle tickets, badges and poppies and given support in so many other ways. Our RSL is very important to us and we work very tirelessly to support our members. Our Annual Christmas Dinner will be held Friday 10th of December with all the trimmings and the 1st Prize in our Giant Christmas Raffle is a wheelbarrow full of goodies with 2nd, 3rd and 4th Prizes also to be drawn. Tickets will be on sale shortly for \$1.00 a ticket and will be drawn on the 10th of December. Then our girls will go for a few weeks holiday until next year when we start all over again hopefully with the assistance from our supporters. Merry Christmas and a Happy New Year.

Submitted by Betty Barned.

KYNETON EQUIPMENT & PARTY HIRE

FOR ALL YOUR HIRING NEEDS

8-12 BEAUCHAMP ST PHONE (03) 5422 2311
KYNETON VIC 3444 FAX (03) 5422 2930

Email: kynhire@bigpond.net.au
website: www.kynetonhire.com.au

Chiropractor – Mark Brown

- 20 years in Practice.
- Upstairs at Westpac Bank, 75 High Street
- Muscle realign and stretch techniques
- Gentle spinal adjustments
- Shoulder, elbow, wrist, knee, foot problems
- Headaches, migraines, asthma, neuralgia, digestive problems



Phone 5427 1456 or 0407 526 403



Historic HOME & GARDEN

Wednesday - Saturday 12 to 5pm

Sunday 10am to 5pm

Groups by appointment

T: 5472 1032

E: admin@budacastlemaine.org
42 Hunter Street, Castlemaine



Collier Office and Business Assist

Shop 5, 130 High St, Woodend. P: 5427 3209 e: sales@collierooffice.com.au



With Christmas fast approaching, we have some great gift ideas for everyone . . .

Birthday Card Book

For recording birthdays & anniversaries, with room for storing cards. Features pockets for every month. Dates and cards can be added at any time making it an invaluable record book and a gift that she's sure to love.



Genuine Leather folios



A great gift for the businessman or woman. Keep all your important papers & business items in one place

with these folders made from the finest handcrafted leather.

Crayola packs for the kids

Loads of fun, the kids will love the range of Crayolas fun packs. They're great for travelling over the Holiday Season.



Everybody loves stationery!
A voucher makes the perfect gift.

Back to School is just around the corner. Don't drive all over Melbourne searching for supplies. Come to Colliers – we'll fill your lists and deliver to your door too! Conditions apply

Eating Out, In & Around Woodend

HOLGATE'S BAR & RESTAURANT

Microbrewery Hotel with cosy open fires, stained glass windows and friendly atmosphere. Award winning local beer. Delicious meals including house-made bread, pasta and desserts. Function room and stylish accommodation now available.



Open for Lunch Tues-Sun. Open for Dinner 7 Days

79 High Street, Woodend

Ph 03 5427 2510

CAMPASPE HOUSE

A COUNTRY HOUSE HOTEL & RESTAURANT

CHRISTMAS & NEW YEAR OPENING HOURS

Christmas Eve & Christmas Day - Fully Booked

Sunday 26th December - open for Lunch & High Tea

Friday 31st New Year's Eve - 4 course & glass of bubbles \$75

Saturday 1st January - open for A la Carte Dinner

Sunday 2nd January - Fully Booked

Please ensure you make a reservation

GOLDIES LANE WOODEND 03 5427 2273

reservations@campaspehouse.com.au www.campaspehouse.com.au



Book Now

For your Christmas Function

or

End of year celebration

Function room for larger groups

Private room for smaller numbers

Various packages and prices

Victoria Hotel Woodend

03 54272721

email: vicwoodend@bigpond.com

www.vicwoodend.com.au



Award winning Bread,
Pies & Cakes

Shop 1 & 2, 115 High St, Woodend

Open daily from 7am

54272486

www.bourkies.com.au



Frank & Rose Gorlitz

Open 7 Days

8am till late

For Bookings

Ph/Fax 5427 4447

Mobile 0488 423 537

"Where Lovers of Food Eat"

breakfast, lunch & dinner

Specialising in;
Gluten Free Cakes
Petite Fours (great for functions)
Cakes for all occasions
Wholesale cakes for Cafes & Restaurants

Pie'ce De Resistance

Joe and John Tullio

www.mrcakes.com.au

74 East Street Woodend

5427 3960

Eating Out, In & Around Woodend



The Village Larder

**Now Open 7 Days
8am - 4pm!**

81 High St, Woodend
Phone 5427 3399
info@thevillagelarder.com.au
www.thevillagelarder.com.au



the bentinck
OF MACEDON

*The perfect location for your Christmas function
or end of year break up dinner.
Availability is limited so book early
to avoid disappointment.*

t 03 5427 2944 f 03 5427 2232
e sales@bentinck.com.au w www.bentinck.com.au

CONFERENCES WEDDINGS EVENTS

* FAB FOOD
* FUNCTIONS & CATERING
BY ARRANGEMENT
Bookings Essential
BYO wine only
Light Snacks Mondays
Free entry for
Macedon Ranges residents

Tel: 5427 0295

Large range of Australiana Gifts

**Hanging
Rock
Café &
Country
House**

Zarby's
Wine bar & bistro

Open Wednesday - Saturday
10am till late

84-88 High Street, Woodend P: 5427 4414



Red Door Cafe
At the Roadhouse

Open Early 7 Days
Dinner Thur, Fri & Sat - Eat in or Take Away

*More than just a Roadhouse....
Great Food & Great Coffee!*

Carolyn & Steve Green
Phone 5426 4460

313 Black Forest Drive,
Macedon Vic 3440

**Mount Macedon
Winery**

**Christmas comes early with Wine tasting
and sales and great Pre-Christmas
Specials on all case sales**

**Drop in for a glass of wine on our terrace
decking overlooking the gardens and
enjoy a freshly made Pizza to order or a
summer platter for 4.**

**We will be OPEN the week
between Boxing Day and NYE .
Not open Christmas Day / New Year's Day.**

433 Bawden (Douglas) Road, Mt Macedon, Victoria 3441
T: (03) 5427 2735 M: 0417 553 659 F: (03) 5427 1071
E: info@mountmacedonwinery.com.au W: mountmacedonwinery.com.au
open each weekend 11am - 5pm

This page is proudly sponsored by the 19th HOLE SHOPPING CENTRE

cut out this calendar & stick on your fridge!



Upcoming Events & Meetings

December

- 2 Late Night Shopping in Woodend
- 2 Woodend CFA Fire Meeting @ 7.15pm
- 10 RSL Annual Christmas Dinner
- 12 Carols by Candlelight
- 18 Bed Time Story, Woodend Library
- 18 Carols at Duneria
- 18 Cambodian Kids Festival
- 19 Summer Solstice lunch @ Hanging Rock
- 25 Christmas Day
- 26 Boxing Day

January

- 1 New Years Day, Races at Hanging Rock
- 8 & 9 Kyneton Theatre Co.
- 26 Australia Day (Public Holiday)
- 26 Racing at Hanging Rock

March

- 26 Woodend Carnival, hosted by St Ambrose School & Parish

All Community groups and events are invited to submit their dates for listing on the Community events calendar

COMMUNITY GROUPS CONTACT DETAILS

Alcoholics Anonymous Friday night, Cobaw Community Centre 0409 131 144
 Australian Breastfeeding Association, Heather 5427 2398
 Cobaw Thursday Walking Group 5427 3340
 Daylight Masonic Lodge, 5427 2480
 1st Woodend Scout Group, 5427 4968, Jenny
 Friends of Macedon Ranges Library, Chris/Bill 5427 2469
 Garden Club 5422 6062 / 5427 3340
 Living Word Christian Church 5429 6327
 Historical Society, Courthouse, 5427 2523
 Macedon Ranges & District Motor Club, 10 Webb Cres, New Gisborne 1st Wednesday each month 8pm
 Macedon Ranges Animal Aid, Buffalo Sports Stadium, 5427 1752
 Macedon Ranges Bridge Club, 5420 7595
 Macedon Ranges Families of Children with Disabilities Support Group, 5427 3365
 Macedon Ranges Residents Assc. 5427 1481 or 5427 2651
 Macedon Ranges Communicators (ITC), 5427 2669
 Macedon Ranges Photographic Society, 1st Tues of month, Ron Mathews 5427 3284
 Probus, 5427 2003
 R.S.L., Anslow Street 5427 3122
 Red Cross, 5427 1260
 Rotary Club of Woodend, meetings weekly at Vic Hotel Thursdays 6.45pm, Brendan 5422 6442
 St. Mary's Guild, 11am, 4th Wednesday of month
 St. Mary's Street Stall, 9-12 noon outside Woodend Newsagency (2nd Sat of the month)
 Woodend Landcare Group, Jo 5427 1909 or Doug 5427 0666, 3rd Tues Meeting, 4th Sunday Working Bee
 Woodend Angling Club, RSL Hall, 5427 2395
 Woodend Art Group, Railway Station, 5422 6172 or 5427 1659
 Woodend Business & Tourism Association, Cori 5427 3434, 2nd Tues of month (BATA)
 Woodend Hanging Rock Petanque Club, Hanging Rock Reserve Ph: 5427 2477
 Woodend Lions Club, Meetings 2nd/4th Wednesday each month, ph Robyn Roberts 5427 1342
 Woodend Model Railway Club, Buffalo Stadium
 Woodend Pony Club, 5427 2793
 Woodend Senior Citizens Club, Comm. Centre
 Woodend SES Training Nights, Urquhart St
 Woodend Winter Arts Festival Inc., Jacky 5427 1560

Ian Marks Liquor

1300 627 575 ext 24 &34

Blue Orange Concepts: homeware
5427 4500

Woodend Pizza & Pasta
5427 3777

Coles Supermarket
5427 2377

**Collier Office & Business Assist
and Woodend Copy Centre**
5427 3092

Pets Haven
5427 3603

Mitre-10 Woodend Hardware
5427 2314

BP Woodend
5427 2248

Target Country
5427 4366

Macedon Ranges Travel Services
5427 4777

Kosmac & Clemens: optometrists
5427 4577

Woodend Cycles
5427 2662

Salvation Army Family Store
5427 4421

Loose Change Bargains
5427 4466

Bodywise Underwear
1300 66 17 66

Australia Post
5427 2600

Feeling Framed
5427 4455

The Spa Beauty Therapy Centre
5427 3322

HIGH STREET SHOPS

Color Me Cooper
5427 1454

Chelleon For Hair
5427 3246

Not Just Fudge
5427 2210

RT Edgar Real Estate
5427 1222

Woodend Bakery Cafe
5427 3434

PLEASE SEND US YOUR FUTURE DATES

BGE

Joinery Quality you deserve

• Kitchens • Shop fittings • Bars

BRAD ELSE

Mob: 0412 355 548 Ph: 5422 2571
New Factory & Showroom

Lot 11 Kyneton - Metcalfe Road, Kyneton
11am - 5pm Fridays or by appointment

Tylden Community Planning Group

The next planning group meeting will be held in the Tylden Hall at 7:30 PM on Tuesday February 15th 2011. All community members are welcome to attend.

Woodend Red Cross

Thank you to all who came and supported the BBQ held in front of Coles at the end of October. It was a great success. Ruth from Woodend was the winner of the fruit basket.

Thank you to Coles for donating a gift card. The Christmas party will be held on Thursday December 2nd at 12pm. Members please bring a plate. Meetings will resume at 1.30pm 39 High Street Woodend in February.

Submitted by M.Hocking

THE WATERBLOKE

Water Saving Solutions

The Water Bloke Specialises in

- Rainwater Tank Installations,
- Tank To Toilet connections,
- Grey Water Recycling,
- Septic Systems
- Garden Reticulation.

We're based in Woodend, so call us for a free consultation and Water Audit of your home.

BEAT THE DROUGHT THIS SUMMER and
Contact us at www.thewaterbloke.com.au
or on thewaterbloke@gmail.com

Contact Craig (author of the best
selling book "Every Last Drop:
The Water Saving Guide) on
1300 650 947 or 0410 275 714



"for all your water needs"

News from the Library

We have had such a busy term. Many new borrowers have joined the Library, Toddler and Story times have been well attended and we have tried some new after school activities. Thanks to all those in the Woodend community for supporting us. Many of you will be familiar with the Hippo on the roof, a children's book by Hazel Edwards – the Hippo eats a lot of cake. When she had her 30th birthday New Leaves Bookshop and the Macedon Ranges Florist helped us with our party.

Christmas Bedtime Storytime

We hope younger children will join us to get ready for Christmas on December 8th at 6.30 pm for Christmas Bedtime Storytime. Come along in your pyjamas and hear some stories, sing some songs and get ready for Christmas.

After Christmas there will be Holiday Program activities, please check our website for details closer to the time. www.ncgrl.vic.gov.au

We would like to thank all those in the Woodend Community for supporting us this year. Thanks to the Friends of the Library members, the volunteers who come in and assist with a range of tasks, Library users who contribute ideas and suggestions and parents who assist our younger Library members use our resources. Thanks to all those donating books, many will be available at the Woodend Market. Thanks to the Friends of the Library team for organising this fund raising project.

We would also like to thank the Shire Customer Service Team at Woodend; their support in the Library is appreciated. Best wishes for Christmas and New Year from all the Library staff

submitted by Lulu Cockram Woodend Library

Sand | Soil | Mulch | Pots | Pavers | Plants
Water features | Fire wood | Wine barrels
Hire Equipment | Synthetic turf | Sleepers



42 Nursery Road Macedon 3440 Victoria
Email hello@nrgsupplies.com.au
Telephone 03 5426 2400 | Facsimile 03 5426 4972
General open hours Monday-Friday 7.30-5pm,
Saturday-Sunday 9-5pm. Arrangements outside
these hours can be made.

SOLAR DIRECT

- Solar Hot Water
- Grid Interactive Solar Systems
- Stand Alone Power Systems

Ph: 1300 55 77 98

Mobile: 0411 269 489

Lancefield

Macedon Ranges Basketball Association – All Abilities Group

Initiation to Clinic and Sausage/Burger Sizzle

Saturday 4 December 2010, 12 noon, Buffalo Stadium Woodend

The all abilities membership of the MRBA has received some generous grants and funding from local Woodend traders, and Basketball Victoria.

This group was established over 18 months ago within MRBA who have been running regular basketball skills training every Saturday in the summer season and every Sunday in the winter season, during the school term. While not every member can attend all sessions, there have been over fifty (50) enrolments in the club over this period.

The group has now invited the Sunbury All Abilities Basketball group to a Skills Clinic, and social sausage sizzle afterwards, to be held at the Buffalo Stadium, Woodend on Saturday from 12 noon onwards. Cost is the normal fee, \$3.00.

Both Basketball groups would also like to extend an invitation to any member of the community and their carers, either in Sunbury or the Macedon ranges, who wishes to come and try on this day, and also meet new friends. New members are always warmly welcomed.

There is no age or ability barrier for this clinic. Our existing members range from age nine to age seventy five. Carers are also welcome to attend.

For catering and coaching purposes please RSVP to Mauraid Clayton on 0408 550 691

All news items, articles and community news columns must be received by 15th of each month.



Padma

exquisite paintings, prints and gift cards

padma's embraceart studio, carlsruhe 5422 3322

colenso gallery, woodend 5427 2788

the baytree cafe, romsey 5429 6340

rasputin's restaurant/gallery, mt. macedon 5426 3700

visit her gallery online @ www.embraceart.com

Do you know how many chemicals you could be eating?

Do you know where, and more importantly, how your fruit and vegetables are grown?

All our fresh produce are Australian grown with no chemical sprays, artificial fertilisers or genetically modified materials,
just as nature intended.

Nature's Garden Organic Produce is guaranteed Australian grown and 100% certified organic.

Call in and see our extensive 100% organic range at Shop 4A Collier St, Woodend (cnr Anslow St) or call 5427 4406

www.naturesgarden.com.au



Upcoming Feature

The *New Woodend Star* is proposing to run another of our well regarded features, this time casting the spotlight on our trades and service providers. With our feature set for March 2011, please contact Alexia if you'd like to expand your business promotion. Places will fill fast, so contact us to book your space!

This newspaper is supported by



JumboWebDesign.com

WEBSITE DEVELOPMENT

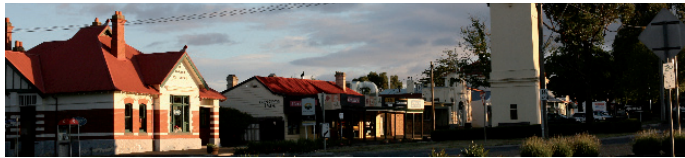
- Up your business's power with a custom designed website
- Macintosh Computer and iPhone / iPad help
- Affordable Rates

Chris Doe
Chris@jumbowebdesign.com
54272092
040 882 5363

Come and party

Are you hosting a children's party and having horror visions of leftover partie pies in the carpet, sauce smeared on the walls and chocolate sprinkles in the linen cupboard? Is your monthly meeting too crowded for the dining room? Or does the venue you usually attend get too cold in winter?

The Woodend Tennis Club hall is available to the public for hire. Suitable for seated groups of up to 80 and well over 100 for other functions, the hall has reverse cycle air-conditioning, and kitchen, bathroom and storage facilities. Hiring charge is \$25 per hour or \$15 for permanent bookings. For more details contact Nadine on 0439 399 838.



WOODEND NURSERY & GARDEN SUPPLIES OPEN 7 DAYS

"LOCAL KNOWLEDGE FOR LOCAL CONDITIONS"

36 URQUHART ST, WOODEND

Tel: 5427 1866 Mobile: 0428 271 866

Full range of garden & landscape needs
Rock, Soil, Sands, Sleepers
Bobcat hire

MACEDON RANGES

4x4

4wd Service, Repairs & Accessories.

We would like to thank our valued customers for their support during our first year of business. We wish you all a Safe and Happy Christmas.

Shane & Renee Carey

7 Ligar Street, Woodend Phone 5427 4468



CONTINUING VETERINARY EXCELLENCE

Our commitment to you is to provide the highest quality veterinary services in medicine, surgery, health and wellbeing and preventative healthcare in a friendly, personalised & caring environment.

We care for all companion animals, equine, alpacas & livestock.

ANIMAL MANIPULATION

24 Hour Emergency Care

5427 4344

12 Anslow Street Woodend

Aged Care:

Be Prepared, Be Organised, Be An Early Bird

You may think there is plenty of readily available accommodation at various levels of Aged Care in Macedon Ranges.

That is simply not true. With perhaps only one exception, there are long waiting lists at all Facilities – even the new ones. Waiting Lists vary from 'Low Care' to "High Care' and Dementia categories, but to ensure comfortable and timely entrance into any one of the quality facilities you should begin preliminary planning and bookings now.

Much work is currently being done both at Council level and through private developments. New and upgraded rooms are being built at some of the existing centres and plans are being developed in co-operation with the Shire for extending others and creating new 'Village-type' accommodation. These all take time.

Begin to plan now.

Submitted by Woodend Community Aged Care



KIDZONE

Outside School
Hours Care &
Vacation Care
Program Available



We are an Accredited Child Care facility offering Vacation Care for your School age children.

Our Experienced Staff and program offer the following:

- A wide range of indoor & outdoor activities.
- Nutritious morning and afternoon snacks.
- Lunch provided (excluding Excursion days).
- All areas of development catered for.
- CCB rebate approved.



For more information please contact:
Kidzone Co-ordinator: Elsie Parkinson (03) 5429 6327 or 0422 860 486



BLACKFOREST OFFICE SYSTEMS

OFFICE ASSISTANT & BOOKKEEPING

PROVIDING ADMINISTRATIVE SUPPORT FOR SMALL TO MEDIUM BUSINESSES THROUGH OUT THE MACEDON RANGES.

- DATA ENTRY
- BAS/PAYG
- WORD PROESSING
- MYOB BOOKKEEPING
- SECRETARIAL
- OFFICE ADMINISTRATION

PHONE ERIN 0407 401 406 office@bfos.com.au

Heritage Society News

Here is the beginning of Shirley Wakefield's fascinating story: "Our arrival in Woodend"

"Bert had been cutting and carting firewood from the bush on the outskirts of Woodend delivering to the North Melbourne siding. This particular Saturday he was cutting and loading the firewood and was about to leave the bush when he became bogged. Because his truck was so heavily loaded on each attempt to free the wheels the truck simply dug deeper into the mud. It was much later before he was able to get back on to firm ground. This was the day on which we had planned to move from Keilor where we had been living, to a three acre bush block we had purchased. It was three and a half miles along the Ashbourne Road.. Everything had been packed up ready to be loaded and we had planned to leave Keilor after lunch but because Bert had been held up with the bogged truck, he did not arrive until the late afternoon. By the time we were loaded it was quite dark and of course much darker when we arrived at the block. Using our headlights we wound our way up the narrow track, stopping to try and focus on the but which was to be our new home. It was very dark and drizzling with rain.

Our first task was to unload the livestock – two pigs, one goat, eight geese, six chickens, two dogs and one cat. As there was no fence around the property or any sheds we just had to let them loose and hope they would not wander away. Next thing was to check out the but but we couldn't find the lamp so had to make do with a torch. I think the but had probably been used by woodcutters in the area. It was unlined with gaps between the floor boards. At one end there was a tiny black stove and one small window. Bert didn't want to leave the truck lights on for too long so we just put the mattress on the floor and found the blankets and pillows and called it a night. We were wet and cold and as we did not have any dry wood and did not know where to find the kettle on the load, we decided to go hungry until day-break.

We woke early. I was anxious to see if the livestock were still

CHINKA STEEL CONVEYANCING (HEP Steel, Solicitor)

**FOR ALL YOUR
PROPERTY SALES AND PURCHASES**

**RING CHINKA ON
03 5427 2477**

74 HIGH STREET WOODEND 3442

around. Luckily they were all present and waiting to be fed. While I was doing this, Bert got the fire going and found the boxes with the food and utensils, and we were happy to have breakfast. It was still raining lightly as we began unloading the furniture. There was only room for the bedroom and kitchen suites inside, so the rest had to be stored under a lean-to attached to the but and covered with a tarpaulin. There was no toilet and when I was concerned about this, Bert said there were plenty of bushes and anyway, who is going to see you out here? However on Monday morning he went into Woodend to get the materials to build a toilet and I was happy."

Now having read this, we are sure you will want to read more! Fully illustrated copies of "Shirley's Story" are available from the Courthouse in Forest Street on Wednesdays or from the Macedon Ranges Dry Cleaners in Anslow Street at other times. (\$12 collected, \$15 posted). A great Christmas gift and a must read for long time residents and newcomers alike

Please note that the Local & family History Resource Centre will close for the Christmas holidays on November 24th and reopen on the first Wednesday in February. Our very best wishes for Christmas and the holiday period, to all our friends and supporters.

Submitted by Janet Hawkins.

Save Your Wardrobe
Save Your Pocket
Save The World

*Saving
grace*
recycled fashion

42 Anslow St Woodend T 0431 734 897



**Financial
services you
can trust**

Bob Nixon - Authorised Representative,
Total Financial Solutions Australia Pty Ltd

ABN 58 003 636 968 AFSL No.246545

PH: 5428 0123
www.nixonfinancialservices.com.au

**Total
Financial
Solutions** 
committed to your success



LEADING HAND CARPENTRY
COMPLETE BUILDING SOLUTIONS

· quality workmanship · effective project management
· new homes · extensions · renovations

  **REGISTERED**
Building Practitioner

Call 0439 360 896 or email
shannon@lhcarpentry.com.au



Grantra
HOME IMPROVEMENTS
Specialising in Bathroom Renovations

PO Box 736, Woodend 3442
0418 175 877
www.grantrahomeimprovements.com.au

Beata Lumina

St Ambrose Church choir "Beata Lumina" have just returned home to Woodend after their pilgrimage to Rome for the Canonisation of St Mary MacKillop of the Cross. The Canonisation was a moment in Australian history and reflected as such in St Peter's Square with over 8000 Australians, New Zealander's and Islander's present to witness this wonderful occasion. Many people within the Woodend community helped to sponsor Jack Simpson to get to Rome via the concert "All Through the Night" which was organized by Dr Frank Donovan, a local Woodend resident and parishioner at St Ambrose.

The Choir consists of Dr Ann Marie Elliot, Mrs. Annette Brown, Mrs. Janice Koop and Sharon Simpson. Ms. Irene O'Duffy was unable to attend due to prior commitments but travelled with us in spirit.



Woodend Produce Store

31 Brooke Street Woodend

Ph. 0354272753

**Poultry, Stock & Horse Feeds,
Hay, Grain, Chaff
Pet Food, Hardware, Fencing,
Electric Fencing, Tanks, Oils & Lubes,
Irrigation, Potting Mix, Fertilizer,
Herbicides & Much More!!
Elgas LPG Deliveries
We fill BBQ Gas Bottles**

Mon – Fri 8.30 - 5.30

Sat 8.30 - 12.30

**Come in and see Wayne, Mick & Albert
for friendly service and expert
knowledge.**

feeling FRAMED

bringing art to life

**Custom picture, artwork, tapestry
and memorabilia framing,
professionally and economically
performed in-house.**

A comprehensive range of Art supplies
at very competitive prices.

**Christmas presents for all ages -
including boxed art & craft ideas, pencil
& paint by numbers sets for youngsters,
Artist's quality brush and paint sets for
the more experienced.**

Gift vouchers are available, for those
hard to buy for or have everything.

43 Anslow Street, Woodend – 5427 4455

Next to the post boxes

feelingframed@bigpond.com

The trip to Italy was truly inspiring and has left an indelible mark upon all of us. We had the privilege of singing under the dome of a fifteen hundred year old Byzantine cathedral in Ravenna, within the cloisters of the Benedictine Monastery in Padua, and in the Crypt of St. Francis of Assisi, these experiences both spiritually and as a choir will stay with us forever.

The highlight however was seeing Mary MacKillop's banner unfurled in St Peter's Square and hearing her name proclaimed officially to the world. I felt intensely proud at that moment as did the other girls knowing that an Australian woman was being recognized for her enduring work to serve the poor and neglected within the community, all in the name of God. To be made a saint is the highest earthly honor we can give to a fellow human being.

Jack and I had the benefit of sitting inside the barriers along with Sophie Delzario and many others who all played a part in this wonderful journey. At the blessing Jack held up a statue of Jesus which he had purchased especially for this moment and I declare that Mary MacKillop was smiling at us with delight on that day, she was very pleased.

Christmas Carols with Beata Lumina

On Sunday December 19th at 7.30 pm the choir will hold a free concert to celebrate the Spirit of Christmas in St Ambrose Church, all are welcome to attend and you will be able to view the banner we had made to commemorate the canonisation. There will be refreshments afterwards.

Submitted by Sharon Simpson

M. R. Health Services Ecumenical Memorial Service

In 2009 the first memorial service was held to provide an opportunity for residents, families, friends, staff and volunteers to come together and remember and honor those residents who have passed away.

Current residents at Macedon Ranges Health Care were able to reflect and celebrate the special time spent with friends.

For many families and friends the memorial service was the first opportunity to return to the aged care service after the death of their loved ones. The response to the memorial service was overwhelming.



The 2010 memorial service was held in October with a gathering of over forty family members, residents, friends, staff and volunteers. The service included a mixture of prayer, music and songs, lighting of remembrance candles and featured a visual presentation of each person with his/her name displayed, often capturing candid photos of the people as we remember them best.

As residents, families, friends, staff and volunteers have benefited from this experience the ecumenical memorial service has now become a greatly anticipated annual event.

It is so very important to remember to care for everyone's spiritual and emotional needs, often forgotten, not just their physical and social needs. Due to the positive benefits for everyone of this annual celebration of the lives of our loved ones, it is now being planned to hold the memorial services more regularly.

Submitted by Macedon Ranges Health Services

Paul Groves
Mobile 0414 928 491

**Computer Sales, Repairs &
Consulting**

Home and Office Networking
Onsite Repairs and Maintenance
New Computer Systems

paul@pcweirdness.com

Peter Baker & Associates Barristers & Solicitors

**Family Law
Criminal law
General & Commercial Litigation**



Peter Baker BSC & LLB (MONASH) **Juliana Smith** BM GDLP & LLB (UNE) **Fran Medina** BA LLB

By Appointment at: **27 Urquhart St. Woodend**
Head Office: 389 Hargreaves St, Bendigo

info@peterbakerlaw.com.au

Ph: 5441 7300 Fax: 5442 4232

FREE FIRST INTERVIEW*

*For advice only matters

WOODEND SELF STORAGE (Vic) Pty Ltd



- Store your business documents, stocks or furniture
- 7 day access
- 33 individual sheds
- Affordable prices
- Insurance available

For any enquiries
please contact
Leonie or Dennis Barker
on **5427 4175**

**RAIN, RAIN GO AWAY,
COME AGAIN ANOTHER DAY
GOODBYE WINTER
SUMMER IS HERE TODAY**

**220cm
x 110cm
TABLE
with 8
PORTSEA
CHAIRS
ONLY
\$999
Lazy Su-
san \$99**



**MALAY
3 SEATER
BENCH
ONLY
\$199**



**90cm
FOLDING
ROUND
TABLE
With 4
BALCONY
CHAIRS
ONLY
\$399**



All prices
for self
assembly.

**150cm
x 90cm
TABLE
with
6 ISLAND
FOLDING
CHAIRS
ONLY
\$669**



**Wrought
Iron
BENCHES
From
\$199**



VILLAGE FURNITURE

**13-15 Horne St,
SUNBURY
9744 3333**

**90-94 High St,
WOODEND
54 273 666**

www.homemakersfurniture.com.au

Woodend Neighbourhood Centre

As our year comes to a close we reflect on some of the opportunities we offered this year and look forward to next year and consider how best to meet changing community needs.

This year people have attended our centre to learn skills for employment including computers, MYOB, QuickBooks, Certificate in Education Integration Support, Certificate IV Trainer and Assessor, person centred counselling, first aid and management of anaphylaxis.

Many people improved their general health and wellbeing though attending one of our many active classes including, walking, cycling, Qi gong, belly dancing, yoga, Tai Chi and more recently Zumba. We ran The Life! Type 2 Diabetes prevention program and will continue to do so in 2011.

People learned skills for fun including patchwork, jewellery making, digital photography, embroidery, gardening, seniors' mobile phones, email and internet, Thai cooking, French and Spanish conversation, car maintenance and creative writing.

During term time and school holidays we have offered a wide range of activities for children from movie afternoons, knitting, yoga, juggling, creative art, drama, scrap booking to Silat Malay martial art and paper making.

We are active in the community too, supporting many local community groups with a place to meet. We lend barbecues, wine glasses, tables and chairs for group activities and special occasions. We auspice the Woodend Youth Music Collective, who hold regular open mic nights and provide entertainment at many local functions and fund raisers. We support the Macedon Ranges Film Society and Newham Hall activities.

There are still a couple of courses starting this term – First aid runs over 2 Saturdays on 4 & 11 December and covers level 1 and 2 first aid, CPR refresher and anaphylaxis component. Come for the entire course or just the modules you are interested in. Ask for times and costs.

Now we have had lots of rain the rivers and lakes are filling up so it is time to dust off your boat. Be safe on the water and take the test required to get your licence endorsed with boat and powered watercraft licences. Tuesday 7 December 6-10pm. Ring for full details.

Zumba has started in Woodend – we are currently offering a Wednesday day time class at 1pm and evening classes at 6 or 7pm. Ring Rachel on 0404 219 855 to book.

The Centre could not operate without our volunteers who assist in the running and upkeep of our building and programs. If you would like to become a volunteer register your interest now for our next volunteer intake in 2011.

We are busy planning for 2011 and are interested in what you would like to learn, whether for employment, upskilling or creativity. Contact Sarah if you have skills you would like to share or ideas for the Centre.

We close over the Christmas period and reopen for limited hours from 18 January ready to run classes from the

continued over page

beginning of February. Our new program brochure will be in your letter boxes before the end of January. On behalf of the Committee of Management I thank all the volunteers, tutors and visitors to the House for your support of Woodend Neighbourhood Centre and wish you a safe and enjoyable Christmas.

Submitted by Sarah Campbell, Coordinator

Welcome to the Woodend Star Kids Club

December Birthdays

3rd	Yani Dyer.....	Turns 10
15th	Liam Muir.....	Turns 8
17th	Caitlin Elliot.....	Turns 10
19th	Eleanor Middleton.....	Turns 11
20th	Demi Giddings.....	Turns 13
28th	Charlie Nickson.....	Turns 13
28th	Jessica Beverley.....	Turns 9
29th	Daniel Takos.....	Turns 5
30th	Alannah J. Nugent.....	Turns 14
31st	Christopher Nugent.....	Turns 11
31st	Gabriel Takos.....	Turns 7
31st	Tessa Forbes.....	Turns 7

January Birthdays

4th	Casey Dzesa.....	Turns 9
18th	Oliver Franzen.....	Turns 11
24th	Aaron Still.....	Turns 9
24th	Patrick Still.....	Turns 9
29th	Jack Dzesa.....	Turns 13
29th	Travis Timmermans.....	Turns 9

Happy Birthday Everyone!

JOIN THE WOODEND STAR KIDS CLUB

Fill in your details below and place in the drop-boxes. Age limit is restricted to 13 years old. Must be resident of 3442 postcode.

Full name: _____

Address: _____

Date of Birth: _____ Age: _____

Phone: _____

Parent/Guardian

Signature: _____

Sponsored by:



You can collect your birthday surprise by visiting Collier Office & Business Assist



Magnetic Websites

Martin Beaumont

PHONE 03 5427 4478

MOBILE 0414 274 988

HTTP www.magneticwebsites.com.au

EMAIL martin@magneticwebsites.com.au

Developing websites for the Macedon Ranges and beyond, ask how we can help you get online

Carlsruhe community planning group

Update on master plan for the carlsruhe community

Feedback from Carlsruhe community members regarding the Master Plan was completed by the end of August and was presented by Josh Smith from Left Field Design to the Community Planning Group on September the 9th. The group was asked to prioritise the works proposed in the plan to assist with the staging process.

Once these priorities have been completed a staging programme will be confirmed by the planning group. Additional data will then be collated and a final report and plan will be presented to both the Carlsruhe community and Council.

There is no definitive time frame on this process. The community will be notified when the plan is complete and ready for inspection and comment.

Submitted by Margaret Glen



start your Aikido journey

Simon Harris, 5th Dan
Japanese trained

Tues & Thurs evenings
7pm, Macedon Community Centre,
Tony Clarke Reserve,
Waterfalls Road, Macedon

www.iwamaaikido.com.au
0417 505 611

All local groups, clubs and committees
are invited to submit articles for
publication

Rosheen

art & design
furnishings & adornments

Damian

Ph: 0407 697 333

E: rosheenarts@bigpond.com

www.rosheenarts.com.au

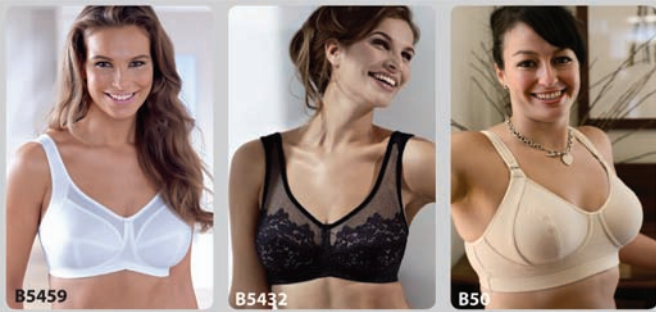




bodywise
UNDERWEAR

www.bodywise.com.au
1300 66 17 66
Shop 19, 130 High Street, Woodend

Wire-free bras, briefs & more ... sizes 10 to 30



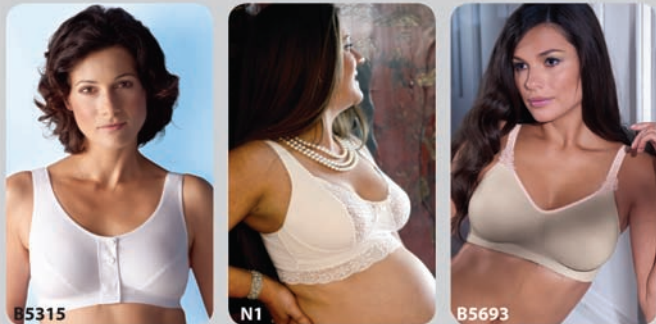
B5459

B5432

B50

Bra not a good fit? Why not consider a comfortable wire-free option from Bodywise ... gift vouchers available.

Visit us for an obligation-free fitting. Appointments essential.



B5315

N1

B5693

**• wire-free • everyday comfort • all ages •
• maternity • sports •**

Buffalo Sports Stadium

10th December Let's celebrate a great year of Kinderygm with Santa arriving on a Fire Truck at 10.30am. All money taken in kinderygm will go directly to the Woodend CFA. So wear your Santa hat and come and enjoy the last class of 2010 at the Kinderygm, Buffalo Sports Stadium Woodend. For more information on our classes or any the program run at the Buffalo sports stadium, please call 54 273 411 or email buffalo@mrsc.vic.gov.au.

Anita – Coordinator, I would just like to thank all the associations and volunteers who use the Buffalo Stadium it is your support that runs these programs, without your help many children and adults would be without an organised recreation activity. Thank you for all your cooperation with myself and I hope to have the centre buzzing again in the New Year. Merry Christmas and have a safe Christmas.

Truck & Bobcat Hire

Paving Turfing Rockeries
Paling & Colourbond Fencing
Watering Systems Retaining Walls
All of your garden and driveway
construction catered for

CD & MC Muir Pty Ltd
craig@bobcatcraig.com

0417 331 085 5427 3095



Early notice Australia Day celebrations

Going away for the holidays? Staying home to enjoy the lovely Macedon Ranges? Make sure your back for the *Australia Day Celebrations* Wednesday 26th January 2011, 9:30 am till 2:30 pm, At Woodend RSL.

Fun activities will include: Parade of National Flags, Flag Ceremony and National Anthem, Morning tea of traditional favorites, Live Music most of the day, BBQ lunch, Games and activities most of the day. Everyone welcome.

A Joint venture of the Woodend RSL, Rotary Club of Woodend, and Woodend Scouts.



WILLIAM BAJZIK N.D.
NATUROPATH
HOMEOPATH HERBALIST
BOWEN THERAPIST
ATMS 5485

• IRIDODOLOGY • ALLERGY TESTING •
• ACUPUNCTURE POINT ANALYSIS •
• HERBAL MEDICINES •

P: 5427 1666
M: 0402 880 271

42 ANSLOW STREET
WOODEND

Future of Macedon Ranges mapped out

After initial consultation with the community earlier in the year, Macedon Ranges Shire Council has now adopted a draft Settlement Strategy for consultation purposes. The strategy maps out a plan to manage population growth in the Shire to the year 2036.

“The draft strategy looks at the individual capability of each town to cater for growth, based on a broad range of factors including infrastructure, environmental constraints, character issues and the community aspirations we have heard to date,” said Rick Traficante, Manager Planning and Development.

“As a result, some towns are scheduled for significant growth, being Gisborne, Kyneton and Riddells Creek; some are scheduled for more moderate growth, such as Romsey and Lancefield; and some are scheduled for no growth – Macedon and Mount Macedon,” he said. Woodend is scheduled for low-moderate growth – from 3,700 in 2006 to 4,400 in 2036

Council's consultants, CPG Ltd, have estimated that most towns already have enough existing or proposed zoned land to grow to the recommended population levels. The exception is Riddells Creek, where additional land would be required.

“The strategy provides for business development in association with residential growth expected for the towns, in order to achieve a better balance between housing and employment opportunities,” Mr Traficante said.

“The Settlement Strategy process allows the Council to take some control of population growth, and set the direction for that growth at a shire-wide level, rather than

continued over page

simply providing for market demand," he said.

"This approach to growth planning is relatively new in Victoria and the Macedon Ranges is at the leading edge of planning practice in this area." he said.

Although the draft strategy has already had input from the initial consultation period held in early 2010, Mr Traficante said Council was eager to hear the views of the community and was prepared to change the strategy if appropriate.

"We now have a draft strategy that enables the community to visualise a possible future for the Macedon Ranges, so we can facilitate discussion around that. We are keen to hear community views and are providing a range of different opportunities for people to have their say," he said.

Details of consultation

The draft Settlement Strategy and supporting documents are available for public comment until 5pm Friday 17 December 2010 and can be accessed online at www.mrsc.vic.gov.au (click on the 'For Your Comment' link). Copies are also available to view at Council Service Centres.

Written feedback should be addressed to the Manager Planning and Development, Macedon Ranges Shire Council, PO Box 151, Kyneton 3444, or can be emailed to strategicplanning@mrsc.vic.gov.au. A public meeting will be held to explain and discuss the proposed changes on Thursday, 9 of December 2010, 7-9pm at the Senior Citizens Centre, 74-76 Main Road, Riddells Creek.

A listening post will be held in Woodend to allow residents to provide their feedback on the draft strategy on Saturday 11 December 2010, outside Coles supermarket, 128 High Street Woodend, 1.30 PM -3.30 PM

The listening post is street stalls, where you will be able to speak directly to the consultants who have prepared the draft strategy.

Submitted by E. McCormick MRSC



Woodend CFA Meetings In December

The CFA has started the Fire Ready Victoria Campaign throughout Victoria, with two meetings already held in Woodend in late November. There are two more meetings scheduled in December, see details below, so don't miss this opportunity to hear first hand from official CFA presenters.

The Meetings at the Woodend Fire Station in Urquhart Street will each start at 7.15pm, and will be presented by CFA Personnel on Thursday 2nd December & Monday 13th December

The aim is to reach residents, especially those in high risk areas (Woodend is in the Top 52) and ensure they have ample information from which to make an informed decision in the event of a bush or grassfire and importantly, from a preparedness point of view, be able to identify and reduce their risks prior to the fire danger period.

Fire Danger Period coming soon - any burnoffs will require a Council Permit

The Fire Danger Period will soon come into force, and is likely to remain until May 1, 2011 unless revoked earlier due to seasonal conditions.

Keep an eye on local newspapers for the official starting

MACEDON RANGES SELF STORAGE

* 7 day access	Store your:
* Individual units	* Cars
* Affordable prices	* Boats
* Insurance available	* Business documents
* Now Fully Alarmed	* Furniture etc.

Lot 3, Hoyle Court, Kyneton 5422 1898
(Off Beauchamp St) 5422 3488

Viv's Organics

We deliver to your home the
freshest, best quality, certified organic fruit & vegetables available & guarantee this 100%

Pick from a range of pre-selected boxes or select your own order from our weekly availability list

Phone: **0409 386 875**
or **5429 1156**
email: vvien@netcon.net.au

www.vivsorganics.com.au

ZUMSTEIN

DESIGNER AND MAKER OF FINE FURNITURE AND JOINERY

"Third generation woodwork really shows"

Zumstein Pty Ltd
Factory 1/32 Brooke Street
WOODEND VIC 3442
Ph 03 5427 4579
Fax 03 5427 2284
Mobile 0412 138 364

date.

If the CFA is called to an illegal burnoff during the Fire Danger Period we must call the Police to the scene and serious charges and penalties may be incurred.

Your last chance to burn off!

Once the restrictions are in place, you will be forbidden to conduct a burn-off in any form, unless you have an official permit from the Macedon Ranges Shire.

- Under fire restrictions, a permit is required to burn off grass, undergrowth or weeds. This permit is issued by the Municipal Fire Prevention Officer.
- All burn-offs should be registered with the VicFire Burn-off notification line on 1800 668 511.
- Lighting a fire in the open without a permit is an offence and can bring a penalty of up to \$5,500 or 12 months imprisonment.
- Barbeques and fires for cooking and warmth do not require a permit, but must be lit in properly constructed fireplaces, within limits of wind speed and clearance perimeter, and are to be supervised at all times.
- The Can I or Can't I? brochure, available from the CFA website, features the differences between Fire Restrictions and Total Fire Ban days.

If you are unclear about your specific circumstances, you can check the local laws via the internet (www.macedon-ranges.vic.gov.au) or visit your nearest Macedon Ranges council information centre, where the application forms are available.

Do you have a summer fire plan?

We live in an extremely high bushfire risk area and one of the most important things you need to prepare is a clear Bushfire

Premier Office Assist

Seeking a dedicated professional to help with your business or require temporary assistance to fulfil staffing shortages?

Bookkeeping **Temping Services** **MYOB/Quickbooks**
BAS/PAYG **Word Processing** **Data Entry**
Secretarial **Reception** **Administration**

Contact *Virginia Crowhurst*

Mob 0421 557 171 premierofficeassist@bigpond.com

Safety.

Bushfires are survivable, as long as individuals and communities take responsibility for their own fire safety. A well thought out bushfire plan should address all major issues. Make sure everyone in the household knows the plan and what their roles are.

Are you staying or going?

The first and most important decision you must make is to decide whether or not you plan to stay with your home. A home is far more likely to survive if able-bodied people are there during a bushfire, because they can quickly put out small outbreaks on or near the house. However, you must be properly prepared. The decision to evacuate is yours.

If you plan to go ...

Experience has shown that many residents receive little, if any, official warning of an approaching fire. Will you have time to leave the area safely? When will you go? Where will you go? What will you take? Who will you tell? What about your pets? Will you know in which direction the fire is travelling?

Don't leave too late

If you can see the fire it's probably too late to leave. You should not attempt to leave your home at the last minute, when radiant heat is at its peak. The vast majority of deaths in bushfire involve people caught in cars or on foot. Once the fire is close, visibility will be very poor and travel will be hazardous. Fallen trees, power lines, abandoned cars or even firefighting vehicles may block roads.

For further information contact Captain Mick Christie on 0419 870 601 or 1st Lieutenant Mike Dornau on 0409 093 935. On Sundays call the Woodend CFA on 5427 2356 or visit the station in Urquhart Street. Or you can visit our website: www.woodendcfa.org. The Woodend CFA is a volunteer emergency service, committed to Creating a Safer Community.

Submitted by 1st Lieutenant Mike Dornau, Woodend CFA

Bradley's

Curtains + Blinds showroom now open

Mon to Fri 9 - 5.30 + Sat 10 - 1



t 5427 2361 fx 5427 1019 72 High Street, Woodend VIC 3442

www.bradleyscurtains.com

**There is no January Issue of the New
Woodend Star. We'll be back in February
with all the local news and events.
Be sure to have your submissions in by the
15th of January**



THE BROOKE STREET MEDICAL CENTRE

New doctors

We are pleased to announce that we have two new doctors joining the practice in December and another two in January/February.

Brooke St. Directors and Manager thank the community for your patience during the period of our doctor shortage.

We would also like to thank our entire staff for their hard work, professionalism and commitment during this time.

Despite the shortage of regular appointments, our staff have ensured that all patients calling with urgent needs are seen the same day.

Brooke St. Medical Centre Christmas & New Year opening hours



Fri 24 Dec	8.30am – 12.00
Sat 25 Dec	on-call service 1300 55 75 12
Sun 26 Dec	10.00am – 12.00 midday
Mon 27 Dec	10.00am – 12.00 midday
Tues 28 Dec	10.00am – 12.00 midday
Wed 29 Dec	8.30am – 5.30pm
Thurs 30 Dec	8.30am – 5.30pm
Fri 31 Dec	8.30am – 5.30pm
Sat 1 Jan	10.00am – 12.00 midday
Sun 2 Jan	10.00am – 12.00 midday
Mon 3 Jan	10.00am – 12.00 midday
Tues 4 – Fri 7 Jan	8.30am – 5.30pm
Sat 8 Jan	9.00am – 12.00 midday
Sun 9 Jan	10.00am – 12.00 midday

Normal hours resume from Monday 10th January

**For urgent needs after-hours
ring the on-call service 1300 55 75 12**

Always call 000 for medical emergencies

***We wish you a happy Christmas
& a healthy and prosperous New Year***

Brooke St. Medical Centre – tel. (03) 5427 1002 (after hours: tel. 1300 55 75 12)

New building 1st stage to open Feb 2011

The new building is moving ahead as the community would have no doubt noticed. The building is being done in two stages: the front stage provides new GP consulting rooms and rooms for Dorevitch Pathology.

The second (back) stage provides a new treatment room which will allow for improved patient services and also better training facilities for health service students.

We are on track to occupy the first stage of the new building in February 2011. It is expected that the second stage, new treatment room with improved ambulance access, will be ready for occupation around May 2011.

New Rehab gym to open mid 2011

Once the new treatment room is occupied, the old treatment room will be refitted as a rehabilitation gymnasium. This facility will be managed by our Exercise Physiologist, Kellie Ruane; the facility will offer opportunities for the care of people with injuries, chronic conditions and also those interested in exercise for prevention of illness.

**On Code RED
fire risk days
the Practice will be closed**

**Only on these days
call 0428 902 652
for urgent medical needs**

from 8.30 am until 6pm Mon-Fri or until 1pm Sat
After these hours on code red days
call 1300 55 75 12
(our normal after hours Nurse Triage service)

Patient fees

For details of our fees and charges please ask reception for a patient fee sheet.

Just a reminder - we do not routinely bulk-bill and after-hours services are charged at a higher rate than our regular day time services.

St Ambrose Cup – Winning Supper Dance

St Ambrose Parish School parents, friends and families enjoyed a Supper Dance with a difference on Saturday 23rd October. Themed as A Day at the Races, the Hall looked fabulous thanks to the generous donations of racing decorations from the community. Guests dressed to impress and joined in the spirit of the Spring Racing Carnival. The inaugural St Ambrose Cup was run for the more adventurous couples at the dance, with “horses” and jockeys lining up to win the coveted trophy. The first lucky pair past the post was Simon and Justine Mitchener.

Ladies and gents also participated in Fashions on the Field with special guest judges – Karen from Sassy and Darryl from L’Echoppe for Eclectic Style. There were some fabulous outfits, many great hats and special mention goes to Bronwyn Rumble for coming as both horse and jockey and winning the silliest outfit category. Later in the night, a Mystery Fashions on the Field category allowed the audience to create their own cross dressing entrant, with the results proving hilarious.

Special mention must go to our major sponsor Mountview Engineering for donating an amazing handmade outdoor setting for auction. Thanks also to our other sponsors including Simply Energy, Allissa-Kate Salon & Spa, Bertocchi Smallgoods, Bourkies Bakehouse, Bugalugs, Chemist Warehouse, Coles Supermarket, Emilia’s the Saucy Australian, Gisborne Central Pharmacy, Hair Blues, Hanging Rock Winery, Hardwicks, Hannie & Fox Children’s Boutique, Harvey Norman, Hawthorn Football Club, Home Hardware, IGA, Khao Jao Thai, Kriskens Paintright, Kyneton Hanging Rock Racing Club, Kyneton

Museum, Kyneton Tyres, Langley McKimmie, L’Echoppe for Eclectic Style, Michael White Landscaping Excavations, Mick Sell Racing, Middy’s, Mount Macedon Winery, New Wrap Fancy Dress Hire, Peter Sheppard Footwear, Rugs by Ruth, Sassy, The Albion Hotel, Turner Brother, Webber’s Garden Supplies, Woodend Massage & Natural Therapies and Zarby’s Wine Bar.

All up, the night proved a great fundraiser for St Ambrose Parents & Friends and we would like to make special mention of Graham Glasson of Pro Electronics for providing a great night of music and lighting that really enabled guests to dance the night away. Thanks also to all the people who attended and made it such a fun night out and, last but not least, to all the generous and hardworking people on the dance committee. We hope to see everyone back again in 2011!

Submitted by Nicole Cooper

CENTRAL VICTORIAN TIMBER

- Timber •
- Sleepers •
- Treated Pine •
- Cypress posts •
- Hardwood •
- Plaster •
- Doors •

Specialists in house lots and extensions

Phone: 5427 1090

Email centralvictimber@bigpond.com

Monday to Friday 8am - 5pm Saturday 9am-12pm

**988 Blackforest Drive Woodend
(Old Sawmill Site)**



WOODEND & DISTRICT PODIATRY

John F. Shapland

Resident Practitioner

Reg. Department Veteran’s Affairs

5427 2064

Business and After Hours

1895 Mt. Macedon Rd., Woodend



24 Seven Alarms Aust Pty Ltd

- Alarms installed, Serviced and Monitored
- Data cabling and phone line installation
- Medical Alert Systems
- Access Control Systems PSBL: 732-083-90s
- Digital Video Surveillance CCTV packages: domestic and commercial

1800 247 111/ 03 5427 4411
sales@24sevenalarms.com.au



FIREBIRD MOTOR REPAIRS CAR WASH

31 URQUHART STREET
WOODEND 3442

OPEN 7 DAYS
Phone:(03) 5427 2255

Merry Christmas everyone, from CKF

Cambodian Kids Foundation thanks the entire community of Woodend for its ongoing support and generosity towards our foundation this year. So many of the projects we have completed could not have been done without your help. We are so proud to open one of our school rooms and give it a name and plaque that reads "Woodend". To many of the children "Woodend" is the school room where they go to study, learn, play and grow, to us Woodend is the community that helped make everything we do possible.

Thanks once again from the bottom of our hearts, thanks for believing in our dream of a better Cambodian future for all of its beautiful people.

"A Gift that keeps on Giving" is available this Christmas to help support CKF. If you want to give a gift that really gives, come down to Color Me Cooper or look on our website - www.cambodiankidsfoundation.com and view the very special gifts we have to offer this Christmas. Some gifts include a new born baby pack, a family survival kit, school books, bicycles, farm animals and more. The costs range from \$15 - \$60 and are given to a family or child that is in real need. In return you receive a special CKF Christmas ornament with information about the gift attached. They look beautiful on your tree and you can be sure that the family or child who receive the gift will love and appreciate it. This year at Christmas think Cambodian Kids Foundation because our kids love presents just as much as yours do!

Submitted by Sam Cooper



TRADE & SERVICE DIRECTORY

AIR CONDITIONING

SPLIT SYSTEMS INSTALLATION AND SALES

Efficient heating & cooling
For free quote, phone Dave
DW Air 0407 248 454

ELECTRICIAN

Minorlink

Electrical Contracting

Servicing the
Macedon Ranges
and Beyond

Greg Simpson
Ph: 0407 332 413 R.E.C. 9285

DRESSMAKER

Beryl's Tailoring

DRESSMAKING, ALTERATIONS,
BRIDAL, EVENING & DAY WEAR,
LADIES AND MEN'S REPAIRS

Beryl Bachelor
QUALIFIED DRESSMAKER, NEWHAM
BY APPOINTMENT ONLY
MON TO FRI 9 - 5

5427 0568 0418 510 179

HANDYMAN

Rowdy's Handyman Services
Home & Garden Maintenance
No Job Too Small!

- Carpentry,
- Plastering,
- Tiling
- Painting

P 5427 0072
M 0416 274 732

FIREWOOD

O'Callaghan Bros

REDGUM FIREWOOD SUPPLIERS

SPLIT RED GUM FIREWOOD

Excellent Quality Delivered Dirt Free
Ph 7 days
0407 036 800 0429 957 091

METAL GATES

BVM METALCRAFT
Ben McKee
OLDWORLD & MODERN STYLE
GATES & FENCING
bvmmetalcraft@hotmail.com
04 222 88 768

PAINTING

**BD CROSBIE
PAINTING**
Ben T: 5427 2164
M: 0431 205 576

Household & Commercial
Interiors & Exteriors
Painting, Staining & Oiling
Decking, Stairs & Hand Rails
Free Quotes

PAINTING

**GEE'S
Painting etc.**

Call Steven
0402 079 482

SPACE AVAILABLE

Space is still available
in the Trades Section.

Great exposure at just
\$30 per issue.

Call Alexia for further information 5427 3092

STONELAYING & PAVING

DUNN Stonemason & Paver
specialising in

- Retaining Walls
- Drystone Walls
- Stone Houses
- Paving
- Over 20 years' experience

Cameron Dunn
Ph (03) 5427 4778 Mob 0429 162 589

TAXI SERVICE

**CROWN
CABS**
Your Local Taxi Service
Bookings: 9310 5422

TRADE & SERVICE DIRECTORY

ANIMAL CARE



Macedon Ranges Pet Care
An alternative to kennels & catteries
A reliable home care service for pets & farm animals, servicing the Macedon Ranges since 2003
Phone Judy on 5427 1352

CLEANING



Not enough hours in your day?
Need help managing your home?

Stephen Farrell
Personal Services

Very reasonable rates
Through out the Macedon Ranges
Phone 0419 526 275



COUNSELLING



Keryn Allan
Dip. Prof. Couns.

COUNSELLOR

Grief & Loss
Stress, anxiety & depression
Anger management
Workplace issues
Behavioural problems
Relationship issues

Phone: 0417 011 300
Email: kezallan@ozemail.com.au

ELECTRICIAN

Macedon Ranges Electrics
REC 17836
MasterCard
VISA
5422 2182
Spilt System Air Conditioning
Television/Data/Antenna
All Electrical Installations
Contact Dan McCarthy 041754 2235
31 Redesdale Rd Kyneton

ELECTRICIAN

BROWN electrical services
REC 17409
All types of electrical work
Kyneton, Woodend & surrounding districts
"no job too big or small"
Travis Brown 0400 035 442
P: 5422 2568 F: 5422 6908

EXCAVATIONS

Cheap'n'Neat Excavations
Bobcat/Excavator/12m Tipper hire
Post hole digger
Rubbish removal
Free Quotes
Contact Les 0418 556 634

HAIRDRESSING

Just Haircuts
For the whole family!
By Appointment.
Dawn 0411 025 445

HOME INTERIORS

Present Well
HOME INTERIORS - WOODEND
• KITCHEN, LAUNDRY & BATHROOM CONCEPTS
• COLOUR CONSULTANCY
• LIVING ROOM & BEDROOM DECOR
• PREPARING A HOME FOR SALE
CALL DANIELLE FORMICA
ON 0400 664 231
www.presentwellhomeinteriors.com.au

HOME MAINTENANCE

Home maintenance & landscaping service including decking, pergolas, carpentry & painting.
Stuart 0409 150 629
AH 5427 2465

PAINTING

Painting & decorating
Residential & commercial
Rendering
Prompt & professional
Rigoni Painting
Phone 0430 371 001

PHYSIOTHERAPIST

Kyneton Physiotherapy
ROBERT ROUSE
B. App. Sc. (Physio) Member A. Physio. Assoc.
Registered for Comcare, TAC, W/Cover, Vet. Affairs
NO REFERRAL NECESSARY
74 High St. (Corner New St.) Kyneton
5422 2290

PSYCHOLOGIST

Sam Luxemburg
Registered Psychologist
• Personal Counselling in Woodend & Romsey (Medicare rebate available)
• Counselling Training
• Myers-Briggs personality testing
Phone: 0428 270 401
www.luxcollege.com.au

TREE SERVICES

A&P Tree Services
• tree pruning / removal • stump removal
• tree planting / transplanting • rope & harness climbing
• confined space removal • fully insured
Professional commercial & residential tree maintenance
all work carried out by qualified arborist
Call Anthony 0417 059 969

TRENCHING

ASHBY'S TRENCHING
□ Irrigation.
□ Site levelling.
□ Cable and pipe laying
□ On tracks fit in small areas
Phone Mark 0427 973 360

Thank you to all the traders who have supported the New Woodend Star over the past year. Without your support we could not bring the monthly news and events to the local community.

SPORTS NEWS

Women's Tennis Invitation

The Woodend Tennis Club is holding a Grading Day on Tuesday, December 7 for women interested in joining the midweek competition played at courts across the Macedon Ranges and Sunbury.

Players of all levels, whether they wish to be a permanent or emergency player, are invited to go along to the tennis club, behind the Woodend Community Hub, at 2pm.

The next season starts in early February and matches are played against other clubs each Tuesday from 10am to around 1pm (no competition during school holidays). It is a great way to meet a whole range of people in the community, with a luncheon after each match.

It doesn't matter if you are a serious tennis player or one who prefers a hit and giggle, the Woodend Tennis Club has room for men, women and juniors. Anyone interested in playing is asked to contact the club's competition coordinators below:

Midweek Ladies Contact: Leonie, 0413 869 583

Juniors: Noelene, 0457 634 356, Open Night Tennis: Paul, 0408 744 487, Saturday Open: Trudy, 54273524

LANGLEY McKIMMIE



Langley McKimmie Chartered Accountants has been growing the future of individuals and businesses in our community for more than a decade. As one of the regions largest Business Advisory firms, with more than 20 staff employed in Woodend, we have the resources to support your business.

We provide a comprehensive range of services to businesses, self managed superannuation funds and individuals.

SUPPORTING YOUR BUSINESS

Our aim is to support business owners to grow their business and be successful. Our expert services and advice from which you and your business can benefit include:

- How to best structure your business activity
- Cashflow and financial management specific to your business
- Assistance when preparing to buy or sell a business
- Accessing small business concessions to greatly reduce business capital gains
- Ensuring timely and accurate compliance with taxation and other regulatory obligations
- Taxation planning and strategies for optimal results
- Business/family succession planning and restructure

Contact Andrew Marshall or Janine Orpwood on 5427 3790 for an initial consultation.

85 High Street, Woodend Vic 3442
 Website: www.langleyckimmie.com.au
 Email: info@lmadvisors.com.au

The fencin' fella

- colorbond
- tubular
- timber
- steel picket
- pool

Mini Earthmoving Kanga Loaders

Attachments include:
 rotary hoe, soil leveling bar,
 4 in 1 bucket, trenchers,
 post hole diggers, tipper

SHAUN BARRON

MOB: 0407 232 900 or 5422 3488 AH

heritage water tanks

The Rural Tank Specialists

11,500 gal (52,000 litre) to 80,000 gal (358,800 litre)

ask about our NEW GUTTER TECHNOLOGY patent pending

LIMITED TIME ONLY - BE QUICK
110,800Ltr HGT110 \$7995* installed

The all new Australian designed and manufactured gutter system enables you to collect up to 100% of your rain off your tank roof without compromising the capacity of your tank.

TANK GUTTER

RAIN FALL

TO WASTE

WASTED

TO WASTE

EXTRA SAVED RAIN COLLECTED BY GUTTER SYSTEM

EXISTING

Tank with gutter fitted

Tank without gutter fitted

heritage tanks

FREECALL 1800 115 552
www.heritagetanks.com.au

Travelling costs may be incurred extra if in remote regions. Installed Price includes GST. * HGT price does not include gutter.

Trampolines

ORDER NOW FOR CHRISTMAS!

Well Below Retail **SAVE \$\$\$**

12FT = \$395 14FT = \$445

*Prices subject to change without notice

Includes **SAFETY NET - PADS - LADDER**

Free Pickup from Woodend
 \$20 Delivery on site
 Macedon Ranges installation available

For Inspection and Enquiries: Jason Johnson Ph:0400528129
just_trampoline@hotmail.com

The New Woodend Star aims to provide a voice for Woodend residents, Community groups and Businesses. Editorial and publicity for community events is free, and all other contributions or business advertisements are most welcome.