

THE NEW WOODEND STAR



Circulation of 3190 throughout
Woodend postal district, Newham, Hesket, Ashbourne,
North Woodend, Hanging Rock, Carlsruhe, Cobaw.

AN INITIATIVE OF THE ROTARY CLUB OF WOODEND

November 2010

A Monthly Community Periodical

First Publication 1997

Volume Fourteen No 11

The Carlsruhe Market

Woodend Primary School will again, be hosting The Carlsruhe Market on Sunday 14th November 10am till 2pm

The market will be held at the Old Carlsruhe School in Nicholson St, Carlsruhe.



This is always a fun filled day, with many stalls and lots of activities including jumping castles, plant sales, book stalls, face painting, lucky dips.

The new outdoor pizza oven will be fired up and visitors can purchase freshly cooked, nutritious and healthy pizzas, as well as the traditional sausage sizzle and cake, tea or

coffee. There will be plenty of entertainment throughout the day with a variety of buskers and local entertainers displaying their talents. A traditional feature of the day is the drawing of a number of raffles, including the Monster Raffle! Tickets will be available on the day.

Plenty of parking is available and the market is a pleasant way to spend a couple of hours on a weekend.

Stall Holders

If you are interested in having a stall at the market please contact the Woodend Primary School on 5427 2455.

Stalls cost \$20.00 per site.

Submitted by Parents and Friends of Woodend Primary School

Halloween Celebrations

Traditionally, cemeteries are cleaned up and tended on 31st of October, the eve of All Saints Day. Based on a Celtic and Scandinavian tradition of acknowledging the end of the growth and harvesting season and to acknowledge and respect those that are not with the family during the long winter. In Scandinavia spruce branches are placed on the garden beds to protect them from the heavy rain of November and the snow that will fall and lay on them for the 3-4 months from December.

Woodend Rotary are embracing this traditional aspect of Halloween by conducting our annual clean-up of the Woodend Cemetery on this day, in conjunction with Macedon Ranges Venturers and Scouts and Woodend Youthspace.

The trick or treat system of modern Halloween has replaced the original intent described above and become common in all parts of the world.

Over recent years there have been a growing number

of Woodend businesses and local children who have made an effort to dress up their shops and themselves in the modern Halloween theme.

This Halloween Eve, 31st October, The Rotary Club of Woodend will host a community party at the Woodend Children's Park. Beginning at 6pm, with a sausage sizzle, as well as treats for all the kids who dress up. This is a free event and we invite all to join us .

Grant Hocking, Rotary Community Chair stated "this event combines a very worthwhile activity of the cemetery clean up with an activity enjoyed by children and families in Woodend" .Mr Hocking concluded "It is the Rotary Club's way of thanking those members of the community who support our various activities throughout the year. We would like to see a lot

of people turn up in costume to make this a great community event"

Submitted by Caroline Wogan

COMMUNITY
HALLOWEEN PARTY
SATURDAY 31ST OCTOBER
6.00PM AT
WOODEND CHILDREN'S PARK
SAUSAGE SIZZLE
TREATS
COSTUME COMPETITION
ALL WELCOME

PROUDLY PRESENTED BY
ROTARY CLUB OF
WOODEND



New Members

The Rotary Club of Woodend

Put something back into this great community and be part of a worldwide organisation that helps build goodwill and peace allowing ordinary people to achieve extraordinary things and bring about exceptional change in the world.

Contact Brendan 5422 6442

The New Woodend Star

An initiative of the Rotary Club of Woodend Inc.
The Bank, 75 High Street, Woodend, Vic. 3442
ABN 32 685 225 161 No. A0021518E

Layout & printing by Collier Office & Business Assist

For people wishing to submit articles simply place the information in the strategically placed drop-boxes. These are located at the Liquor Shop, Collier Office & Business Assist, The Bank @ 75 High Street and Woodend Newsagency.

EMAIL articles preferred: sales@collieroffice.com.au

Circulation: 3190 copies throughout Woodend and district.

Disclaimer: Articles and comments published in this newspaper are the result of contributions from local groups and relevant news articles pertinent to the Woodend district. Neither the Rotary Club of Woodend Inc., The New Woodend Star nor the editorial team are liable for any mistakes, omissions, or misprints. It prints and makes no representation as to the truth or accuracy of any description, and accepts no liability for any loss suffered by any person who relies on any statement contained herein. The opinions expressed are not necessarily those of the editorial team. The committee reserves the right to omit, reject, cut, alter or otherwise re-work submitted articles to make them suitable.

Committee: Barry Napthine, Ivor Johnson, Claudia Green, Brendan Watters, Alexia Downie, Sue Macklin & Jane Watters

Closing date for inclusion of articles or advertising for each issue is the 15th of the month prior to publication

Information for advertisers

All rates include GST & are priced per month.

- Business card** (55mm x 90mm) \$45 inc GST
- Trade Page** \$30 inc GST
- Quarter page** (90mm x 134mm)..... \$95 inc GST
- Half page** (134mm x 190mm)..... \$170 inc GST
- Full page** (190mm x 277mm) \$295 inc GST
- Insert** (of your printed brochure)..... \$210 inc GST

Advertisers: Please note – it is in your interest to book and pay for a year in advance, as a 10% discount applies to any full year pre-paid booking. Any existing pre-paid ads will revert to the new rate on completion of the pre-paid period.

Advertising bookings to be made with Alexia Downie on 5427 3092 or sales@collieroffice.com.au.

Accounts queries can be made to Sue on 5427 4089 during office hours or nws@johnsonwoodend.com.au
Mail should be directed to: New Woodend Star, C/- The Bank, 75 High Street, Woodend 3442.

Woodend Star Publication Dates for 2010

Dec/Jan 29th November

Advertisers please note: The New Woodend Star will not be accepting inserts for the December issue

Changes to advertisements, new advertisements or cancellations must all be made by email or in writing. All advertisements will be placed and charged for until notified otherwise.

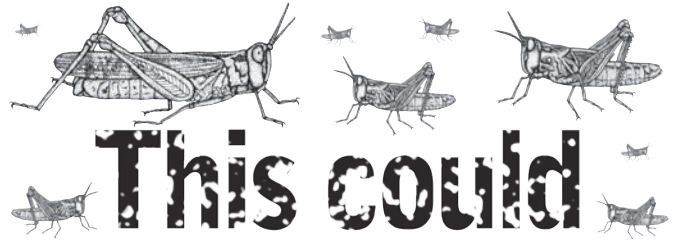
SUBSCRIBE TO THE NEW WOODEND STAR

Do you live outside the New Woodend Star distribution area? Be sure to receive your copy every month by subscribing. A yearly subscription of 11 issues is just \$27.50. Post to New Woodend Star, C/- The Bank, 75 High Street, Woodend 3442.

Name: _____

Address: _____

Phone: _____ Enclosed: Cheque/Money Order for \$27.50



This could be the worst locust plague in 75 years.



We all need to act to reduce the damage.



Scientists estimate that Victoria could be facing the worst locust plague since the 1930s. To help reduce the damage, there are things we all need to do. Monitor your property. Farmers and other landholders have a legal responsibility to report egg beds and locust activity to the Department of Primary Industries (DPI), and to chemically treat locusts on their land.

The Victorian Government is providing a 100% rebate on the chemicals listed for locust treatment. The Government has ordered \$4.2 million worth of chemicals to treat locusts on public land. You need to prepare to chemically treat locusts on your land. Seek advice from chemical suppliers and agronomists about the most appropriate chemicals for your situation.

DPI has developed a new online tool that will help inform landholders about the range and use of chemicals. Meetings are also being held to ensure an effective collaboration between government and landholders.

Remember, you must monitor your property and report any activity urgently to the DPI Locust Hotline **1300 135 559** or visit **dpi.vic.gov.au/locusts**



Locust control starts at your place.

DPI0078_TNW_75

CFA Fire Meetings Coming Up

Turn to page 24 for important information from the Wooded CFA. With the Woodend community deemed a high risk area, Please ensure you make the time to attend one of these meetings.

Budburst Wine & Food Festival

Cellar Door Weekend – Saturday 13 & Sunday 14 November

The Budburst Wine and Food Festival celebrates the beginning of a new vintage at its source; the vineyard and winery. and is a unique opportunity for wine lovers to taste new releases.

Meet the winemakers, share their passion

Thirty wineries across the region, mostly small and all family operated, will open their cellar doors or cluster together to offer wine tastings of spectacular 'limited edition', cool-climate wines. Take the opportunity to talk to the people who grow the grapes and make the wine. Our cellar doors, some rarely open, are a mix of old world character and rustic charm. The winery settings offer amazing views, heritage buildings, magnificent gardens, sheltered courtyards and more.

Celebrate With Food, Wine And Music

Wine, food and music are natural partners, so expect the best at Budburst. Food is available at most locations – pizzas, oysters, tasting platters, BBQ's, gourmet fare and desserts, with a focus on regional produce. There is entertainment too. Check the details in on the Budburst website., www.budburst.com. Tasting glasses are available throughout the weekend at all participating wineries. For \$12.50 your glass purchase is your ticket to tastings at all cellar doors.

Submitted by Macedon Ranges Wines



Hollybush Cottage Management ("HCM")

provides a turnkey solution to convert, promote and manage unoccupied dwellings on your property to create an income producing asset.

Macedon Ranges has a shortage of short-term holiday accommodation beds and needs more properties in the region to service growing demand.

If you own a building that could be suitable as a short-term rental property and want a new source of income please call Amanda on 0413-832 549 or email amanda@hollybush.com.au

www.hollybush.com.au

Woodend Rainfall Report 2010

Each month we add the rainfall details and the year to date total. Our rainfall report shows, 2005, 2006 2007 2008 2009 and 2010 comparisons. Please note that your own rainfall readings may not exactly match these.

	2005	2006	2007	2008	2009	2010	
January	47.4	49.8	83.5	17.1	0.08*	54*	Jan
February	72.2	53.1	27.4	22.1	2.5*	71.5*	Feb
March	5.8	20.6	35.7	25.4	42.5*	121*	Mar
April	18.8	46.4	20.2	20.4	51*	45	April
May	13.6	58.8	95.7	43.7	30.5*	39	May
June	116.7	36.0	105.1	88.7	66.5*	98.5	June
July	76.9	91.6	83.3	112.5	76.5*	87.5	July
August	125.0	30.8	34.8	52.2	107.5*	148.5	Aug
Sept	55.2	50.6	49.8	42.0*	88.5*	97	Sept
Oct	49.8	5.2	12.1	13.0*	46*		Oct
Nov	72.4	13.0	91.0	67.2	99*		Nov
Dec	40.0	31.0	101.2	96.0*	60*		Dec
YTD:	693.8	486.9	739.8	600.3	670.5	761.5	YTD

.Figures for 2008, 2009 & 2010 include information from a different location indicated by *.

For the year of 2009 there was rainfall of

670.5mm

1 inch = 25.4 mm therefore the total year to date is 30 inches



Hesket
Estate
Macedon
Ranges

*Visit us during Budburst
13th & 14th November 10-6pm*

*Sample our award winning
wines, whilst enjoying our
Delightful food.*

- Sparkling Macedon
- Chardonnay
- Gewürztraminer
- Rosé
- Pinot Noir

Savour the lifestyle of Hesket Estate in our rustic cellar door. Enjoy duck and rabbit pies, Hesket spring lamb, cheese and vegetarian platters that complement our handcrafted wines.

856 Romsey Rd Hesket
5472 0707

Local Choir to perform with Australian Youth Orchestra

The Australian Youth Orchestra String Quarter presents a Benefit Concert in aid of the Woodend-based, Resonance String Orchestra, an exciting music education initiative for Macedon Ranges String students. Concert details: 3.30pm November 28th in the Mary Maloney Theatre, Sacred Heart College, Kyneton. Please join us for what promises to be a beautiful afternoon of music-making, with performances by the AYO quartet and Resonance String Orchestra. Enquiries: admin@resonancestringorchestra.org.au

Submitted by Heather Cummins



FAIRHURST CONVEYANCING
and Secretarial Services

For all your
Property Transfers
Ring Sue Fairhurst on
5427 2382
27 Urquhart Street, Woodend
MVCA & AIC

Licensee:
A. (Sue) Fairhurst
Licence No.:
000316L

Equipment for Hire

The Rotary Club of Woodend offers the following equipment for hire. to locals and other community groups

- Soundart PA System \$250
- Data Projector and Screen set \$100
- Marquee \$50
- Chairs (4) and Tables (2) \$20

Rates are inclusive of 24 hour period. Discounted options available for long term rates A security deposit of \$400 is required. Please contact Eb Friedrich 5427 1629

Gilbert & Sullivan next for Gisborne Singers

Maintaining their policy of performing a wide range of musical styles, the Gisborne Singers are now rehearsing Gilbert & Sullivan's *Iolanthe*.

The performance will be a concert version with a bit of added nonsense in keeping with Gilbert's writing which took the mickey out of the British Establishment. Saturday November 20th at Montessori School Hall, New Gisborne, 2.00pm. Bookings advised, ring Liz 5426 2467 Tickets available at the door if not sold out earlier. Adult \$25, Concession \$20.



MACEDON RANGES BUSINESS CENTRE
1st Floor, 105 High Street, Woodend
03 5460 8404
www.mrbuscentre.com.au

Rasputin's

bar • restaurant • gallery

Thursday to Sunday

5426 3700

info@rasputinbar.com.au

40 Victoria Street, Macedon

Teddy Bear Show

This year's Woodend Teddy Bear Show on Sunday, October 31 will be given extra oomph with a special performance by the Kyneton Brass Band.

If you haven't been to the Show before go along and see why it is Victoria's premier teddy bear event and was a finalist in the most recent Macedon Ranges Business Excellence Awards. A highlight is the competition, which attracts entries from some of the best soft sculpture artists in Australia and New Zealand. There is also a section for amateurs and a People's Choice Award.

Around 40 trade stalls will fill St Ambrose Hall, and teddy bear lovers and collectors are expected in droves.

It is a great day for all ages, with delicious refreshments provided by the Woodend CFA.

Proceeds are used to sponsor two rescued bears in sanctuaries run by Free the Bears Fund Inc.

The Woodend Teddy Bear Show will run from 10am to 4pm at St Ambrose Hall, Templeton St, Woodend. Admission \$6 adults, \$4 concession, \$2 children (kids under 6 free).

submitted by Nadine Hartnett



Stanley Bears on show, at Woodend's Teddy Bear Show



Historic HOME & GARDEN

Wednesday - Saturday 12 to 5pm

Sunday 10am to 5pm

Groups by appointment

T: 5472 1032

E: admin@budacastlemaine.org

42 Hunter Street, Castlemaine

Woodend Hanging Rock Petanque Club

Country Challenge Cup

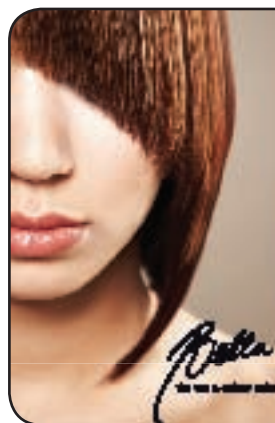
On Sunday the 3rd of October a spirited and enthusiastic group of Woodend Hanging Rock Petanque Club members journeyed to Avoca to compete in the Country Challenge Cup. This event, which has been running for about 14 years, has been a real feather in the cap for the various clubs who have won it in the past. Members representing the Woodend Hanging Rock Petanque Club were: Darrelle Salathiel, Bill Salathiel, and Noel Gladman.

To put it mildly they excelled themselves with some brilliant play, both individually and collectively, coming from behind early in the game, to win the finals of the Challenge. Final score was 13-10

The Committee and members of the Club congratulate the team and all players who represented the Club with great spirit, good humor and most of all great sportsmanship. "It is hoped that in the future we can retain this prestigious cup" Club President Ken Helmore said.

New Season Opened

Every Thursday now and until the end of the season into April, the Club meets at 5.00pm onwards at the Hanging Rock Recreation Reserve. The normal format is fun for all, new players are most welcome, just turn up and we will lend you some boules, show you the basics of the game and get you involved in a game immediately. Membership is only a nominal \$50 most of which goes to Petanque Federation Australia Ltd for membership and licence fees which covers



Gift Cards

Spoil Some One Special
Purchase a Gift Card from Bella

All 'Gift Card' recipients receive a complimentary service of a 'Mini Bliss' - A three minute chiroku scalp massage. Value \$30.00

Bella The Cut & Colour Salon
105 High Street Woodend
Book on line: www.bellacolor.com.au
or phone 5427 3080

©2010 Supply the right beauty solution at Bellacolor.com.au

public liability and players insurance when relevant. This is a great sport for all ages and various physical abilities. No potential player should be frightened off by the fact that they have never played before or in their youth they were not very sporty. People who want more information phone Ken Helmore on 0448 188 838 or Chinka Steel on 0427 272 826.

Look forward to seeing you at the Rock on Thursday night to play a fun game of petanque.

Woodend Red Cross

The Woodend Unit of Red Cross will be holding a BBQ at Coles on Saturday 23rd October from 10am. Our lunch planned for October 28th has been postponed until the new year.

Submitted by Melissa Hocking

KYNETON EQUIPMENT & PARTY HIRE

FOR ALL YOUR HIRING NEEDS

8-12 BEAUCHAMP ST PHONE (03) 5422 2311
KYNETON VIC 3444 FAX (03) 5422 2930

Email: kynhire@bigpond.net.au
website: www.kynetonhire.com.au

Your Memories to DVD

- * 8 mm/16 mm Films
- * Mini DV
- * Compact VHS
- * VHS

Discount for Quantity



Top Hat Productions
Ph: 5422 3930

All news items, articles and community news columns must be received by 15th of each month.

TRISH and CRAIG

(formerly of Colenso in Woodend)

invite you to visit our new café in Romsey



To celebrate the opening of our fantastic garden, bring this ad with you when you come in during November and you'll get a FREE coffee or tea with every breakfast purchased.

Trish still makes the best coffee in town!

Open Wed to Sun 8:30am to 4:30pm
119A Main Street Romsey
03 5429 6340
Fully Licensed
Bookings and Functions Welcome

Ponder life in the slow lane

As passions simmer down and calm prevails, I ask Woodend to consider what we are losing by rejecting VicRoads' improvements to Black Forest Drive. Consider a different scenario than the present freeway exit that enters our town – that of a local road used by the broader community.

An amazing facility for families with older kids

Similar to the opportunities that the Woodend Children's Park presented for littlies, a bike path along Black Forest Drive would link families with local attractions like the Lagoon Park (a truly beautiful experience) and walking/bike trails within the Wombat Forest.

Young driver safety

Safe exit and entrance points for young adults learning to drive are so important when errors in judgment are likely to occur.

Safe crossing

Primary school children travelling on the bus network cannot safely negotiate a four-lane highway with nowhere to pause if traffic is misjudged. Imagine if children could cross safely and walk to and from school. If the road were safer for our children to negotiate, then fewer parents may feel the need to drive their children to a bus stop.

Convenience

Working parents should definitely ponder a life where children could safely cycle or walk to their friend's houses and after school activities in New Gisborne and Macedon.

Access to world-class mountain biking facilities

The youth of Woodend do not have rivers, surf or snow

at their doorstep. Teenagers need to have free recreational opportunities at their disposal for their physical and emotional health.

Healthy lifestyle choices

This is our opportunity to combat climate change: What of being proud of our town in a global sense? People all over the world are moving to combat climate change and are getting bicycle networks up and running. Have a look at Melbourne. Imagine a beautiful entry to our town through the mythic Black Forest, turn off the freeway, breathe and leave the fast-paced city life behind as you travel to the Wood's end. You will not see children and families along the road into town until it is safe.

Submitted by Pene Rice Black Forest Drive Improvement Group, BFDImprovementGroup@bigpond.com

All news items, articles and community news columns must be received by 15th of each month.

Do you know how many chemicals you could be eating?

Do you know where, and more importantly, how your fruit and vegetables are grown?

All our fresh produce are Australian grown with no chemical sprays, artificial fertilisers or genetically modified materials,
just as nature intended.

Nature's Garden Organic Produce is guaranteed Australian grown and 100% certified organic.

Call in and see our extensive 100% organic range at Shop 4A Collier St, Woodend (cnr Anslow St) or call 5427 4406

www.naturesgarden.com.au

Nature's Garden

Quality 100% Organic Produce



Padma

**OPENING SATURDAY NOV. 6 - 28
COLENZO GALLERY**

42 ANSLOW ST. WOODEND PH: 5427 2788

EXQUISITE PAINTINGS, PRINTS & CARDS



**CONTINUING VETERINARY
EXCELLENCE**

Our commitment to you is to provide the highest quality veterinary services in medicine, surgery, health and wellbeing and preventative healthcare in a friendly, personalised & caring environment.

We care for all companion animals, equine, alpacas & livestock.

ANIMAL MANIPULATION

24 Hour Emergency Care

5427 4344

12 Anslow Street Woodend

Sedergreen Jazz Legend comes to Duneira

Duneira is pleased to present an afternoon of spontaneous invention featuring original compositions, jazz standards and a sprinkling of well-known evergreens from local jazz legends, Bob and Mal Sedergreen.

Two of the most radical bands in Melbourne's Jazz history were "Blues on the Boil" the only Blues band to dominate Jazz venues in Melbourne for some 10 years (no such band has emerged since), and "Art Attack" a multi-cultural, multi gendered, multi ethnic band that created a new Australian world music called Joz and headlined the only Australian contingent at Malaysia's first International Jazz Festival. Having led and performed in these incredibly diverse musical situations, Bob and Mal Sedergreen have proved they are worthy contributors from the most basic to the most refined elements of the music.

The hallmark of their playing is not necessarily virtuosity but rather full on intensity. Both have played alongside the world's best jazz musicians, including Dizzy Gillespie, Milt Jackson, Phil woods, Jimmy Witherspoon, and Dave Sanborn, just to name a few. This concert will feature them



playing a wide range of repertoire including originals, blues, jazz and some well-known standards.

Saturday 20 November from 2.30pm - One Hour concert without interval. Venue: Duneira, Officer Lane Mt Macedon. Tickets cost \$35 and \$25 concession. Bookings and enquires on 5426 1490.

Proudly brought to you by the S.R. Stoneman Foundation

Enjoy listening to radio?

Want to hear more on relationships, family, health, faith, sacred music and much more... Tune into 88.8 FM in Woodend, 24/7 Macedon Ranges Seventh-Day Church invites you to come and worship with us every Saturday at 11:00am at 18 Barringo Rd. New Gisborne.

A fundraiser campfire will be held at the church's backyard on 30th Oct. at 7:00pm. with international food for purchase. All the proceeds will go to help a very needy Iraqi family who just lost their child at birth and have extreme medical costs.

Submitted by Bosilka Lipkovich

Grantra
HOME IMPROVEMENTS
Specialising in Bathroom Renovations

PO Box 736, Woodend 3442
0418 175 877
www.grantrahomeimprovements.com.au

Master Builder
REGISTERED Building Practitioner

Save Your Wardrobe
Save Your Pocket
Save The World

Saving Grace
recycled fashion

42 Anslow St Woodend T 0431 734 897

Saving Grace

– *Back Out In Front*

Saving Grace Recycled Fashion has moved, joining forces with the well established Macedon Ranges Florist in the front of the Colenso Complex.

The move is a huge step forward bringing the clever world of preloved designer fashion into the arena of floristry. The combined businesses will now operate 7 days a week. "The advantages are huge" says Caroline Wogan, owner of Saving Grace "It just makes sense to combine forces and create something different". With the spring collection now in store, the timing perfectly complements the gorgeous spring blooms. "The variety of flowers available this time of year is always amazing" said Lisa Campbell, owner of Macedon Ranges Florist "With so many lovely events happening now, everybody needs flowers to help celebrate and why not pop in and pick up a gorgeous new outfit as well?" Come in store, 42 Anslow Street to see to see the exciting changes.

ADVERTISEMENT

Donna Petrovich MP
State Member of Parliament for Northern Victoria Region

Working for the Macedon Ranges Community

Your Country Voice

5782 2011
84 Sydney Street, Kilmore
donna.petrovich@parliament.vic.gov.au

Authorised by D.Petrovich, 84 Sydney Street, Kilmore.

St. Mary's Anglican News

Sunday School Resumes

After a short break, Sunday School has resumed at St. Mary's on the 2nd and 4th Sundays of each month. The children have been learning about the joy and blessings in the world around them, with simple prayers, songs, craft and activities. Sunday School is held alongside the normal Sunday services, with the children going out of the Church during the readings and sermon, and returning in time to take part in communion with their families. All welcome!

Parish Fete – Saturday 27th November

The annual Parish Fete is on once again in the church grounds, corner of Buckland and Owen Streets. There will be lots of trash and treasure, live entertainment all day, books, cakes, biscuits and crafts, BBQ, mega auction at 1 p.m., and lots, lots more. This is State election day, so while you're out and about, why not come and have a sausage and grab a bargain? A fun family-friendly day out for all.

Service Times

Regular services are Wednesdays at 10 a.m. and Sundays at 10:30. On October 31st (being the 5th Sunday), there will be no service at Woodend, but instead a combined service at 10:30 a.m. in the beautiful All Saints Church in Blackwood. Christmas services this year will be as follows: Children's service at 7 p.m. Christmas Eve; "Midnight" Eucharist at 10 p.m. Christmas Eve; Christmas Day service at 10:30 a.m.

Organist required

St Mary's Anglican Church is also seeking an experienced Organist For further information please contact Fr. Malcolm Thomas on 5427 2460

Submitted by Kelly Clune



Woodend Produce Store

31 Brooke Street Woodend

Ph. 0354272753

**Poultry, Stock & Horse Feeds,
Hay, Grain, Chaff**

**Pet Food, Hardware, Fencing,
Electric Fencing, Tanks, Oils & Lubes,
Irrigation, Potting Mix, Fertilizer,
Herbicides & Much More!!**

**Elgas LPG Deliveries
We fill BBQ Gas Bottles**

Mon – Fri 8.30 - 5.30

Sat 8.30 - 12.30

**Come in and see Wayne, Mick & Albert
for friendly service and expert
knowledge.**



Financial services you can trust

Bob Nixon - Authorised Representative,
Total Financial Solutions Australia Pty Ltd

ABN 58 003 636 968 AFSL No.246545

PH: 5428 0123

www.nixonfinancialservices.com.au

**Total
Financial
Solutions**



committed to your success

**All news items, articles and community
news columns must be received by 15th
of each month.**

Tristan
WESTON
Liberal for **MACEDON**



*Making a difference
in our communities.*



"If elected,
a Coalition
government will
restore Black
Forrest Drive
to four lanes,
Gisborne to
Woodend and
that's guaranteed"

What matters to

TRISTAN

*"I love living in the Macedon region, but after more than
a decade of Labor our communities need a change.*

*I want to work with you to make sure our communities
get the essential services and infrastructure that
our growing area needs." Tristan Weston | Liberal for Macedon*

authorized by T. Nutt 104 Exhibition St Melbourne



LEADING HAND CARPENTRY
COMPLETE BUILDING SOLUTIONS

· quality workmanship · effective project management
· new homes · extensions · renovations



REGISTERED
Building Practitioner

Call 0439 360 896 or email
shannon@lhcarpentry.com.au



start your Aikido journey

Simon Harris, 5th Dan
Japanese trained

Tues & Thurs evenings
7pm, Macedon Community Centre,
Tony Clarke Reserve,
Waterfalls Road, Macedon

www.iwamaaikido.com.au
0417 505 611

Regular business card advertisements (90mm x 55mm) are \$45
inc GST per month - book & pay 11 months
and get 10% off.

Peter Baker & Associates Barristers & Solicitors

Family Law
Criminal law
General & Commercial Litigation



Peter Baker
BSC & LLB (MONASH)

Juliana Smith
BM GDLP & LLB (UNE)

Fran Medina
BA LLB

By Appointment at: **27 Urquhart St. Woodend**
Head Office: 389 Hargreaves St, Bendigo

info@peterbakerlaw.com.au

Ph: 5441 7300 Fax: 5442 4232

FREE FIRST INTERVIEW*

*For advice only matters

Paul Groves

Mobile 0414 928 491

Computer Sales, Repairs &
Consulting

Home and Office Networking
Onsite Repairs and Maintenance
New Computer Systems

paul@pcweirdness.com

Joanne Duncan

STATE MEMBER FOR MACEDON **MP**



Friends,

At the heart of good governance is honesty & accountability, as well as an understanding of the issues confronting the whole of society.

If you have any concerns you wish to raise, please do so.

Feel free to call me on:

5428 2138

NOVEMBER – A wonderful time of the year!

It's springtime, the time of year when we emerge from the cold and thankfully this year, rain, into a season of renewal.

The football has finished and the sound of leather on willow is resonating around our now impossibly green cricket grounds and we are spending more time outdoors. As Robin Williams said "Spring is nature's way of saying, "Let's party!"

We look at our gardens and marvel at the trees and plants that have survived twelve years of drought and our lawns that are growing rapidly, prompting us to get the mower out from the far corner of the garage.

Spring is also a good time to start preparing our properties for the summer ahead.

The welcome rain has meant our dams are filling, but the grass and undergrowth is growing, ready to dry off as the temperature heats up, providing fire fuel.

Now is the time to take a look around our properties to prepare for the bushfire season. It is important to reduce the fuel around your home and property, make sure trees are trimmed, long grass is slashed, woodpiles are moved away from the house and gutters are cleared.

It's also a good time to check with your local CFA to make a note of your local fire guard meetings, fire restrictions and the new total fire ban and fire danger ratings, or go to www.cfa.vic.gov.au or call my office on

5428 2138 and I can send some information out to you.

Warm regards,

Joanne Duncan MP Member for Macedon

Upcoming Feature

The *New Woodend Star* will print a special Christmas feature in the December edition, offering businesses and traders a way to say thank you to their customers for their support during the year. Places will fill fast, so contact us to book your space! For information, phone Alexia on 5427 3092.



Need something special for Christmas?

Come in and browse our ever-changing range, or order early for those hard-to-find titles

We welcome Special Orders and Lay-Bys, and Gift Vouchers are available.

Cnr Anslow & Collier Sts, Woodend
5427 3772
Closed Mondays

**RAIN, RAIN GO AWAY,
COME AGAIN ANOTHER DAY
GOODBYE WINTER
SUMMER IS HERE TODAY**

**220cm
x 110cm
TABLE
with 8
PORTSEA
CHAIRS
ONLY
\$999
Lazy Su-
san \$99**



**MALAY
3 SEATER
BENCH
ONLY
\$199**



**90cm
FOLDING
ROUND
TABLE
With 4
BALCONY
CHAIRS
ONLY
\$399**

All prices
for self
assembly.

**150cm
x 90cm
TABLE
with
6 ISLAND
FOLDING
CHAIRS
ONLY
\$669**



**Wrought
Iron
BENCHES
From
\$199**



VILLAGE FURNITURE

**13-15 Horne St, 90-94 High St,
SUNBURY WOODEND
9744 3333 54 273 666**

www.homemakersfurniture.com.au

Tylden Community Planning Group

A number of projects as indicated on the community priorities for Tylden are in various stages of planning.

A consultant has commenced work on a preliminary study for a bike path from Tylden to Kyneton. So far the feedback has been that the roadside from Tylden to Campaspe Downs should not pose too many problems for a shared path. However from there on to Kyneton the roadside verge is too narrow for a path and this would mean private land would have to be accessed. We now wait for the full report in December.

A Tylden tennis court study has been finalized, but no costing was included. This could be tied to a future Masterplan.

A planning application for a Tylden Community Notice Board has gone in and we are still awaiting an outcome from Council on this.

The Tylden Masterplan has been discussed with the Department for Community Planning and Development and further work on this may be necessary.

The next meeting for the Tylden Community Planning Group will be held at 7:30 PM at the Tylden Hall on Tuesday October 19th and November 16th. All interested community members are welcome to attend.

Submitted by Carla Flood

Rosheen
art & design
furnishings & adornments

Damian
Ph: 0407 697 333
E: rosheenarts@bigpond.com
www.rosheenarts.com.au



**Magnetic
Websites**

Martin Beaumont

- PHONE 03 5427 4478
- MOBILE 0414 274 988
- HTTP www.magneticwebsites.com.au
- EMAIL martin@magneticwebsites.com.au

Developing websites for the Macedon Ranges and beyond, ask how we can help you get online



Specialising in:
CAR PARK KERBS • ASPHALT EDGING
GARDEN EDGING • VARIOUS PROFILES
REPAIR WORK



**IAN
0409 443 036**

Woodend Little Athletics

It's not to late to register

Starting this summer season. Little Athletics Victoria have reconfigured their regions and Woodend has now been transferred to the Western Metropolitan Region.

The club has a new committee with a positive focus on the benefits that Little Athletics can have, as a basis for personal self-development, setting and attaining goals, as well as a basis for all other sports.

The club's main focus this season is on rebuilding our Centre and providing opportunities for children to develop their fundamental motor skills, self-development and improving their all over athletic ability, through both skills based training and traditional athletic competitions.

The Woodend Little Athletics Centre 2010-2011 season has commenced at the Racecourse Reserve, Forest Street, Woodend. Come & give us a try. Events start at 6 pm and should be finished by 7.30 pm. Please wear comfortable clothing, hat and runners. Also bring a bottle of water.

The registration fee for the year will be \$80.00. If you are registering your child for little athletics for the first time, please bring proof of age I.e. Birth Certificate. Children must be 5 years of age or over.

We encourag all athletes to travel to compete as a team at the invitations extended by bigger and more established Centres and to enter our New Regional Competitions. These additional competitions will enable athletes to test their ability and understanding of the rules and formalities of traditional athletics and possibly set a pathway to the Commonwealth Games in 2022.

We welcome all interested parties to attend and/ or contribute to all committee meetings which are held periodically on Thursdays at the Woodend Scout Hall. Please Contact President Leanne Hume on 0417 031 597

Submitted by Colleen Dwyer-Gray

Truck & Bobcat Hire

Paving Turfing Rockeries
 Paling & Colourbond Fencing
 Watering Systems Retaining Walls
 All of your garden and driveway
 construction catered for
CD & MC Muir Pty Ltd
 craig@bobcatcraig.com
 0417 331 085 5427 3095



WILLIAM BAJZIK N.D.
 NATUROPATH
HOMEOPATH HERBALIST
 BOWEN THERAPIST
 ATMS 5485

. IRIDODOLOGY . ALLERGY TESTING .
 . ACUPUNCTURE POINT ANALYSIS .
 . HERBAL MEDICINES .

P: 5427 1666
 M: 0402 880 271

42 ANSLOW STREET
 WOODEND



www.bodywise.com.au
1300 66 17 66
 Shop 19, 130 High Street, Woodend 3442

Wire-free bras, briefs & more ... sizes 10 to 30





• wire-free • everyday comfort • all ages • maternity • sports •

Late Night Shopping

Christmas is coming and our thoughts turn to Christmas Shopping.

It's time again for the Woodend Late Night Shopping event. Local traders across Woodend will open late on Thursday December 2nd. There are so many advantages in shopping locally; no fighting for car parks, no long queue and you know where to go to find that perfect Christmas gift!

This year your donation from purchasing a ticket will be donated to a local charity seeking support. Read the December edition of the *The New Woodend Star* for further details.

By taking advantage of this late night trading event, you are supporting both local traders and a local charity, and we invite you to join us for this once a year event.

Submitted by Mort Tobias





Hanging Rock

Craft Markets Australia
 presents
 a market day at...
Hanging Rock

A marvellous variety of food, a relaxed atmosphere and a wide selection of high quality crafts and produce, combine to make a market you'll want to keep coming back to!

Sunday, October 31st, 2010
 (Cup weekend and early bird christmas shopping)
Sunday, March 13th, 2011
 (Long weekend, great weather and weekend escape)

Operating from 10am to 3pm
 No dogs in market area

South Rock Road, Woodend, Via Calder Fwy M79 - Mel Ref: 609 69
 More Info - Call 5974 4710 or visit www.craftmarkets.com.au







craft markets
australia

Eating Out, In & Around Woodend

HOLGATE'S BAR & RESTAURANT

Microbrewery Hotel with cosy open fires, stained glass windows and friendly atmosphere. Award winning local beer. Delicious meals including house-made bread, pasta and desserts. Function room and stylish accommodation now available.



Open for Lunch Tues-Sun. Open for Dinner 7 Days

79 High Street, Woodend

Ph 03 5427 2510

BUSINESS FOR SALE

Not Just Fudge

126 High Street,
Woodend

Home-made Fudge,
Natural Ice Cream, Coffee, Tea, Herbal
Tea, Milk & Thick Shakes, Cakes,
Sandwiches, Freshly Squeezed Fruit &
Vegetable Juices

Trading 7 days
Great Business,
established 10 years
Enquires to
Maureen Wilson
0427 355 525



Award winning Bread,
Pies & Cakes

Shop 1 & 2, 115 High St, Woodend

Open daily from 7am

54272486

www.bourkies.com.au



Book Now

For your Christmas Function

or

End of year celebration

Function room for larger groups

Private room for smaller numbers

Various packages and prices

Victoria Hotel Woodend

03 54272721

email: vicwoodend@bigpond.com

www.vicwoodend.com.au



Frank & Rose Gorlitz

Open 7 Days

8am till late

For Bookings

Ph/Fax 5427 4447

Mobile 0488 423 537

"Where Lovers of Food Eat"

breakfast, lunch & dinner

Specialising in;
Gluten Free Cakes
Petite Fours (great for functions)
Cakes for all occasions
Wholesale cakes for Cafes & Restaurants

Pie'ce De Resistance

Joe and John Tullio

74 East Street Woodend

www.mrcakes.com.au

5427 3960

Eating Out, In & Around Woodend



The Village Larder

**Now Open 7 Days
8am - 4pm!**

81 High St, Woodend
Phone 5427 3399
info@thevillagelarder.com.au
www.thevillagelarder.com.au



the bentinck

MACEDON RANGES OF WOODEND

The perfect location for your Christmas function or end of year break up dinner. Availability is limited so book early to avoid disappointment.

t 03 5427 2944 f 03 5427 2232
e sales@bentinck.com.au w www.bentinck.com.au

CONFERENCES WEDDINGS EVENTS

* FAB FOOD
* FUNCTIONS & CATERING
BY ARRANGEMENT
Bookings Essential
BYO wine only
Light Snacks Mondays
Free entry for
Macedon Ranges residents

Tel: 5427 0295

Large range of Australiana Gifts

Hanging Rock Café & Country House

Zarby's
Wine bar & bistro

Open Wednesday - Saturday
10am till late

84-88 High Street, Woodend P: 5427 4414



Red Door Cafe
At the Roadhouse

Open Early 7 Days
Dinner Thur, Fri & Sat - Eat in or Take Away

*More than just a Roadhouse....
Great Food & Great Coffee!*

Carolyn & Steve Green
Phone 5426 4460

313 Black Forest Drive,
Macedon Vic 3440

MACEDON RANGES WINE AND FOOD FESTIVAL
BUDBURST 2010
SATURDAY 13TH AND SUNDAY 14TH NOVEMBER.

MOUNT MACEDON WINERY

Open 10am to 5pm

Music: 2 PIECE LOCAL BAND: **REMEDY**

Wine: **DISCOUNTED ESTATE GROWN WINES**

Food: **FRESHLY MADE PIZZAS,
LOCAL PRODUCE: VARIETY SALAD PLATES**

Enjoy The Day,
Bring Friends & Relax,
Try Our Wines

433 Bawden (Douglas) Road, Mt Macedon, Victoria 3441
T: (03) 5427 2735 M: 0417 553 659 F: (03) 5427 1071
E: info@mountmacedonwinery.com.au W: mountmacedonwinery.com.au

This page is proudly sponsored by the
19th HOLE SHOPPING CENTRE

cut out this calendar & stick on your fridge!



**Upcoming Events
 & Meetings**

October

- 30 Woodend RSL Women's Auxiliary Dinner
- 31 Community Halloween Party 31 Wildflower walk @ Hanging Rock
- 31 Teddy Bear Show 10am -4pm

November

- 10 Garden Tour with Stephen Ryan @ Duneria
- 13 & 14 Budburst Food & Wine Festival-
- 13 Newham Garden Club Plant & produce stall
- 13 Braemar College Reunion- Class of 2000
- 13 Newham Primary School Open Garden Fundraiser
- 14 Ride your Bike to buy a Bike
- 14 Carlsruhe Market
- 14 Chaplaincy of Gisborne, open garden fundraiser @ Tieve Tara, Mt Macedon
- 16 Tylden Community Planning Group Meeting
- 18 Woodend CFA Fire Meeting @ 7.15pm
- 19 Woodend Rotary Fundraising Luncheon
- 20 Trentham Farmers Marke
- 20 Duneira Jazz Concert
- 20 Gisborne Singers perform Islanth
- 27 **St Marys Festiva**
- 27 Braemar College Reunion- Class of 1990
- 27 Grow your own Herbs @ Woodend Neighbourhood Centre
- 28 Tree & Shrub planting @ Hanging Rock
- 28 Woodend Scouts & Landcare Working Bee @ Ruby MacKenzie Park

December

- 2 Late Night Shopping in Woodend
- 2 Woodend CFA Fire Meeting @ 7.15pm
- 19 Summer Soltice lunch @ Hanging Rock

March

- 26 Woodend Carnival, hosted by St Ambrose School & Parish

**COMMUNITY GROUPS CONTACT
 DETAILS**

- Alcoholics Anonymous Friday night, Cobaw Community Centre 0409 131 144
- Australian Breastfeeding Association, Heather 5427 2398
- Cobaw Thursday Walking Group 5427 3340
- Daylight Masonic Lodge, 5427 2480
- 1st Woodend Scout Group, 5427 4968, Jenny
- Friends of Macedon Ranges Library, Chris/Bill 5427 2469
- Garden Club 5422 6062 / 5427 3340
- Living Word Christian Church 5429 6327
- Historical Society, Courthouse, 5427 2523
- Macedon Ranges & District Motor Club, 10 Webb Cres, New Gisborne 1st Wednesday each month 8pm
- Macedon Ranges Animal Aid, Buffalo Sports Stadium, 5427 1752
- Macedon Ranges Bridge Club, 5420 7595
- Macedon Ranges Families of Children with Disabilities Support Group, 5427 3365
- Macedon Ranges Residents Assc. 5427 1481 or 5427 2651
- Macedon Ranges Communicators (ITC), 5427 2669
- Macedon Ranges Photographic Society, 1st Tues of month, Ron Mathews 5427 3284
- Probus, 5427 2003
- R.S.L., Anslow Street 5427 3122
- Red Cross, 5427 1260
- Rotary Club of Woodend, meetings weekly at Vic Hotel Thursdays 6.45pm, Kai 5427 1029
- St. Mary's Guild, 11am, 4th Wednesday of month
- St. Mary's Street Stall, 9-12 noon outside Woodend Newsagency (2nd Sat of the month)
- Woodend Landcare Group, Jo 5427 1909 or Doug 5427 0666, 3rd Tues Meeting, 4th Sunday Working Bee
- Woodend Angling Club, RSL Hall, 5427 2395
- Woodend Art Group, Railway Station, 5422 6172 or 5427 1659
- Woodend Business & Tourism Association, Cori 5427 3434, 2nd Tues of month (BATA)
- Woodend Hanging Rock Petanque Club, Hanging Rock Reserve Ph: 5427 2477
- Woodend Lions Club, Meetings 2nd/4th Wednesday each month, ph Robyn Roberts 5427 1342
- Woodend Model Railway Club, Buffalo Stadium
- Woodend Pony Club, 5427 2793
- Woodend Senior Citizens Club, Comm. Centre
- Woodend SES Training Nights, Urquhart St
- Woodend Winter Arts Festival Inc., Jacky 5427 1560

Ian Marks Liquor

1300 627 575 ext 24 &34

Blue Orange Concepts: homeware

5427 4500

Woodend Pizza & Pasta

5427 3777

Coles Supermarket

5427 2377

**Collier Office & Business Assist
 and Woodend Copy Centre**

5427 3092

Pets Haven

5427 3603

Mitre-10 Woodend Hardware

5427 2314

BP Woodend

5427 2248

Target Country

5427 4366

Macedon Ranges Travel Services

5427 4777

Kosmac & Clemens: optometrists

5427 4577

Woodend Cycles

5427 2662

Salvation Army Family Store

5427 4421

Loose Change Bargains

5427 4466

Bodywise Underwear

1300 66 17 66

Australia Post

5427 2600

Inner Artist

5427 4455

The Spa Beauty Therapy Centre

5427 3322

HIGH STREET SHOPS

Color Me Cooper: clothing/gifts

5427 1454

Chelleon For Hair

5427 3246

Not Just Fudge

5427 2210

RT Edgar Real Estate

5427 1222

Woodend Bakery Cafe

5427 3434

PLEASE SEND US YOUR FUTURE DATES

Got what it takes to be a radio presenter?

Got a spare couple of hours per week and want to have some fun?? 100.7 Highlands FM is looking for volunteers to be presenters, admin assistants and technical advisers.

Perhaps you'd like to offer some feedback – We are asking our community to tell us what you want to hear on your community station!

This is a wonderful opportunity to meet new people, have some fun and even learn new skills if you want to.

Highlands FM is located in the Community Center at Woodend and is on air 24 hours per day, seven days per week.

If you are interested, please contact Milton Perkins on 0419 226 032 or Email thedesk@highlands.org.au.



Come and join the team! Clockwise from front: Roni Wildeboer, Marcie Jones, Dilys, Sam Luxemburg, Doug McIvor, Charles Gaal, Gary Matthews, Chris Finch, Christina Finch, Milton Perkins.

Premier Office Assist

Seeking a dedicated professional to help with your business or require temporary assistance to fulfil staffing shortages?

Bookkeeping **Temping Services** **MYOB/Quickbooks**
BAS/PAYG **Word Processing** **Data Entry**
Secretarial **Reception** **Administration**

Contact *Virginia Crowhurst*

Mob 0421 557 171 premierofficeassist@bigpond.com

Kindergym – 2010

Term 4 will be a 10 week term commencing Friday 8th October, special events for fourth term include:

- A day at the farm. 5th November. Let's pretend we are on the farm lots of work to do when you are a farmer
- Summer celebration – 3rd December Yay it's summer!! Let's celebrate!
- Christmas and last kindergym for the year – 10th

December Let's celebrate a great year at kindergym. Santa will arrive on a fire truck Don't forget to wear your santa hat!!

submitted by Buffalo Stadium

This newsletter is supported by



Bradley's

Curtains + Blinds showroom now open

Mon to Fri 9 - 5.30 + Sat 10 - 1



t 5427 2361 fx 5427 1019 72 High Street, Woodend VIC 3442

www.bradleyscurtains.com

ZUMSTEIN



DESIGNER AND MAKER OF FINE
FURNITURE AND JOINERY

"Third generation woodwork really shows"



Zumstein Pty Ltd
 Factory 1/32 Brooke Street
 WOODEND VIC 3442
 Ph 03 5427 4579
 Fax 03 5427 2284
 Mobile 0412 138 364



LOST DOG

**REWARD
OFFERED**

Loved family pet gone missing.

Please phone

0416 162 482 or

0416 295 773

Woodend Senior Citizens

Activities: Tuesday- Bingo (win a gift) 1.30pm Friday- Carpet Bowls 10.30am (more bowlers please) Cards 1.30pm. General Meeting and Trade Table- Friday 5th November at 11am, followed by lunch, (bring or buy your own) Then a Fun Afternoon and Cards at 1.30pm.

Meeting to discuss next year's bus trips, come with suggestions.

Monday 8th November 2010, Bus Trip to "Surtierra" Alpacas for an interesting talk and DVD, on to Maryborough Station for a stroll through the complex and lunch, then a guided tour around Maryborough before heading off to Istra Smallgoods in Musk.

Christmas Hampers- We will be selling tickets at Coles at the end of November, could you please help. New Members Welcome.

Submitted by Alma Warnock, President



24sevenalarms.com.au

24 Seven Alarms Aust Pty Ltd

- Alarms installed, Serviced and Monitored
- Data cabling and phone line installation
- Medical Alert Systems
- Access Control Systems PSBL: 732-083-90s
- Digital Video Surveillance CCTV packages: domestic and commercial

1800 247 111/ 03 5427 4411
sales@24sevenalarms.com.au



**WOODEND & DISTRICT
PODIATRY**

John F. Shapland

Resident Practitioner

Reg. Department Veteran's Affairs

5427 2064

Business and After Hours

1895 Mt. Macedon Rd., Woodend



**FIREBIRD MOTOR REPAIRS
CAR WASH**

31 URQUHART STREET
WOODEND 3442.

OPEN 7 DAYS
Phone:(03) 5427 2255

Woodend RSL Women's Auxiliary

Well, I'm back after my recent illness and would like to thank my many friends for their good wishes, flowers and cards. Thank you all.

Our Auxiliary is still functioning well. We are very busy of late with functions and we are still having our dinners once a month. The next one is the 30th of this month and there will be none in November due to other commitments and Remembrance Day. I am still Appeals Officer for the RSL but will be assisted by Tony, Barbara and Ken this year as I am still not out of the woods health wise.

On 25th November our Auxiliary will be hosting a luncheon for all the Auxiliaries in the Southern Region and we are expecting quite a large gathering. Our two representatives from the Women's Council at ANZAC are also paying us a visit on this day. A big honour for Woodend Auxiliary.

On the second Friday of each month the Celtic Club gather in our hall and entertain with Celtic music.

The week before Remembrance day members of the RSL will be selling poppies at Coles, please come and support us.

We were fortunate lately to welcome two members; Mary and Betty. Thank you ladies your assistance will be vital with so many of our members out of action. One of our stalwart members, Jenny, is recovering from an operation, we hope she will soon be back with us. Get well soon Jenny.

Last month we had a lovely trip to Castlemaine to visit their Auxiliary and were treated to a lovely lunch. Thanks to Reg who drove the bus. More of these trips will be planned in the future. Our Auxiliary is not all work, so come along and join up and have a jolly good time.

Our Annual Christmas Dinner will be held 10th December. There will be a giant raffle, traditional Dinner, the bar will open and you are assured of a very good night. Please book early and watch for our posters in the local shops.

The wake for Nita McKenzie was held at our RSL catered for by our Auxiliary. We were very sadden to hear of Ron's loss as Nita was a lovely lady and will be sadly missed.

Submitted by Betty Barned



Collier Office
and Business Assist

Shop 5, 130 High Street
Woodend
5427 3092

Feeling frustrated by your computer ?

- Complete PC Troubleshooting
- Virus Removal and Protection
- Hardware Repairs
- Custom Built Systems, Hardware and Software
- Basic Computer Training



Trust Colliers for all your home or business Computer and I.T. needs



Trampolines

ORDER NOW
FOR CHRISTMAS!



Well Below Retail
SAVE \$\$\$

12FT = \$395

14FT = \$445

*Prices subject to change without notice

Includes SAFETY NET - PADS - LADDER

Free Pickup from Woodend
\$20 Delivery Macedon Ranges
On site installation available

For Inspection and Enquiries: Jason Johnson Ph:0400528129
just_trampoline@hotmail.com

WHO DONE IT AT CAMPASPE HOUSE?



HOST A MURDERCO MYSTERY CHRISTMAS OR BIRTHDAY PARTY AT CAMPASPE HOUSE ENJOYING EXCLUSIVE USE OF 32 ACRES!

By DAY PACKAGE INCLUDES:
2 COURSE LUNCH WITH A THREE HOUR REGIONAL WINE PACKAGE, YOUR MURDER MYSTERY HOST, COORDINATION AND SIMPLE COSTUMES \$120PP

By NIGHT PACKAGE INCLUDES:
OVER NIGHT ACCOMMODATION, 3 COURSE SET DINNER, FULL COUNTRY BREAKFAST AND YOUR MURDER MYSTERY HOST, COORDINATION AND SIMPLE COSTUMES \$275PP

MINIMUM 20 PEOPLE - MAXIMUM 40 PEOPLE,
BEVERAGES ADDITIONAL FOR THE DINNER PKG
CALL OUR RESERVATIONS TEAM ON 03 5427 2273
FOR MORE INFORMATION OR VISIT
WWW.CAMPASPEHOUSE.COM.AU

Lachlan Fleming

CONSTRUCTIONS Pt 1

SERVICING THE MACEDON RANGES

0401 499 898

EXTENSIONS
RENOVATIONS
NEW HOMES



REGISTERED
Building Practitioner



Master
Builder



ADVANCED
EQUINE
DENTISTRY

Winner 2009 Macedon Ranges Business
Excellence Awards for Young Business Person &
Professional Services categories

Dr Shannon Lee BVSc

0418 598 621

we
come to
YOU!

Mobile services for Macedon Ranges

www.advancedequinedentistry.com.au

The New Woodend Star • November 2010

page 17

Heritage Society News

Last month I mentioned in this column that we have had second printings made of three of our popular publications – *Echoes of the Past – a history of Newham and Cobaw*, *Shirley's Story* and *Forging History – A History of Blacksmiths in the Woodend & Newham Districts*. Copies can be purchased from the Macedon Dry Cleaners or the Courthouse on Wednesdays. I thought it may be of interest to select some short extracts from these books to give you a better idea of their coverage. We believe that these publications are a 'must read' for anyone who lives in this district and we would like to share them with you.

Here is the beginning of the introduction to "*Shirley Story*" which explains how it came to be written.

"Shirley Wakefield has been a member of the Woodend & District Heritage Society since 1991 and a volunteer at our Local & Family History Resource Centre for almost as long. In 2004, as you will read in her story, Shirley went through some difficult times. For many years prior to this, we had heard Shirley refer to some of her experiences when she first came to the district, and to we suggested that she should write about some of these past experiences. Hopefully it would be helpful for Shirley, while at the same time, providing a useful record of times gone by for our archive. If only we had known how it would develop! When we first discussed the idea, Shirley was a bit reluctant but eventually produced "Our Arrival in Woodend" which we printed in the Winter Edition of Heritage News that year. The response from our readers was immediate. People would stop in the supermarket to ask when the next episode would be out and soon Shirley was hearing first hand that people were really enjoying her story. In view of this response we suggested to Shirley that she had better keep writing!"

If you would like to read more, just \$12 will secure your illustrated copy!

Submitted by Janet Hawkins.

Kirsty Nuttall

MACEDON RANGES PICTURE FRAMING SERVICE

By appointment only
Phone/Fax: 5427 3511
Mobile: 0417 337 857



Woodend Video Library

65 High Street, Woodend

Ph: 54274011

For updates on new releases check out our Facebook Group Page

LANGLEY MCKIMMIE



RETIREMENT PLANNING

Langley McKimmie Chartered Accountants has been growing the future of individuals and businesses in our community for more than a decade. As one of the regions largest Business Advisory firms, with more than 20 staff employed in Woodend, we have the resources to support your business.

We provide a comprehensive range of services to businesses, self managed superannuation funds and individuals. Each month we will be providing a new topic for you to consider.

Take Control of Your Retirement

Self Managed Superannuation Funds provide great opportunities for those individuals who want to take control of their superannuation investments.

Some advantages of using a Self Management Superannuation Fund include:

- Control over what you invest in
- Greater investment choice
- Flexibility of tax planning strategies
- Transfer of personal assets into your SMSF
- Transparency of fees

Langley McKimmie specialise in:

- Expert and quality advice when establishing a SMSF
- Managing accounting, reporting, taxation and compliance
- Structure advice
- Independent audit of the SMSF

Contact Andrew Marshall or Janine Orpwood for an initial consultation.

We are holding a Superannuation Seminar in late November for anyone interested in setting up a SMSF. Please call us on 5427 3790 for more details.

85 High Street, Woodend Vic 3442
Website: www.langleymckimmie.com.au
Email: info@lmadvisors.com.au

**All local groups, clubs and committees
are invited to submit articles for
publication**

The fencin' fella

- colorbond
- tubular
- timber
- steel picket
- pool

Mini Earthmoving Kanga Loaders

Attachments include:
rotary hoe, soil leveling bar,
4 in 1 bucket, trenchers,
post hole diggers, tipper

SHAUN BARRON

MOB: 0407 232 900 or 5422 3488 AH

Sarah Bradley
Foot Carer

Nails trimmed, burred, corns,
callous removed etc.

Tel. 54223705
Mobile: 0428386540
Medical Centre and Home visits

75 High Street
Westpac Building
Woodend

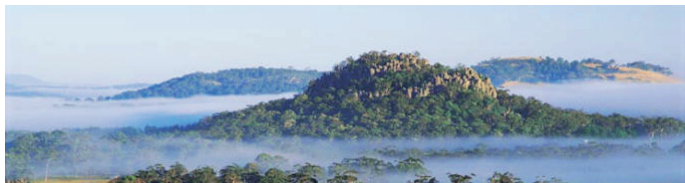


**Massage
Pilates
Remedial
Rehabilitation**
 with Pamela Kell

By appointment
 22 Goode Street
 Gisborne
 5428 1000
 0408 093 098

Assisting in the repair and maintenance
 of your body

Meta Massage
 SPORTS/REMEDIAL MASSAGE, SHIATSU, REIKI
 Raymond White
 Telephone 0411 268 336
 for an appointment
 18 years experience • Chronic and acute conditions
 Sports injuries • Rehab work



**makedo
at zappa-do**

Robot Flowers Dollhouse Car Playhouse Kits

What a great Christmas gift for creative kids. makedo is an Australian invention that is a huge success around the world - a set of connections and decals for kids to create things from the stuff around you. **What else is new at Zappa-do?** We have lots of great gift ideas for kids and adults. **Don't miss out - Layby NOW for Christmas.**

ZAPPA-do *Baby and You!*
 Shop 3, 87 High Street, Woodend. Ph: 5427 1270
 or visit our new website at: www.zappado.com.au

News From Landcare

On the fourth Saturday of September we had a big clean-up of the rubbish and flood debris that came rushing down the Creek with the heavy rains from three weeks before. There were several extra helpers, and everyone was needed – the amount of stuff that had been discarded by us, the townsfolk, was pretty huge!

It would be good if we could all be more conscientious about what we throw away, and where we throw it. *How about trying to keep Woodend beautiful, everyone?*

During October and November we are planning two extra working bees each month, which will be to assist the Woodend Scouts to clear and revegetate a gully near the Creek, behind the Scout Hall. We've ordered 250 plants for this area, and are looking forward to a good response from the Scouts and their parents.



We'll also have the usual general "bee" each month, as there's always work to do along the Creek.

The place to be on Sunday November 28th is at Ruby MacKenzie Park (Tennyson St), where we will be doing weeding and maintenance on last year's school plantings, plus putting in some replacements for plants that haven't survived. The overall survival rate has been excellent, and there are only a few spots to fill in.

Our other "branch", looking after Quarry Rd, Bawden Rd and Sullivans Rd, is still working most Thursday mornings. They are looking for new fields to conquer, as the places they've cared for over the last five years are now only in need of maintenance. They've formed such a bond that they don't want to break up the group, so they'll probably tackle some of the really difficult areas of the Creek West of Jeffreys St, at least occasionally. . It seems you just can't keep a bunch of concerned citizens down!

Congrats to them all – I think they're amazing. They've cleared up so many weeds, and massively reduced the fire hazard in their areas.

The Shire has helped them, and all the work that Woodend Landcare does, by grants for fuel and spray costs.

The wet winter and spring is delaying flowering a little, but the spring wildflowers are coming out. Look out for Early Nancies, Bachelor's Buttons, various Orchids, Dutch Milkmaids, Bulbine Lilies, and Blue Pincushions, to name just a few of our small beauties

They are found on the untouched road and rail reserves, such as Quarry Rd and Sullivans Rd (especially right up next to the Freeway).

I can be contacted for information about Landcare and about our Working Bees: Phone 5427 1909 if you would like to help the Quarry Rd group specifically get in touch with Bert Dawson, Phone 5427 1520

Submitted by Jo Clancy

BodyMinding
alexander technique: an education for living well.

Alexander Technique
Reduce, manage or eliminate stress headaches, muscle and joint pain. The Alexander Technique addresses the underlying problems and puts you back into control for yourself.

Margaret McGill has been teaching Alexander Technique for more than 20 years.

Contact Margaret on **5428 6461**

Woodend Neighbourhood Centre

Spring is well under way and our thoughts now turn to Christmas and summer holidays. Keep your memories alive by taking great photos – learn how with Hubert. We offer beginner and more advanced digital camera classes on Wednesdays and a one off day class on Saturday 20th November. There is a digital camera club which meets to share ideas and knowledge on the 2nd Thursday monthly at 7.30pm.

Our Level 2 first aid, paediatric first aid, CPR updates and anaphylaxis courses run regularly so whether for peace of mind, or employment requirements we have all your needs on your door step, so book in now. Are you working or planning to work in hospitality, or do you cook for a volunteer group? If so we are running a Food Handler Certificate course on Saturday 20th November.

Are you considering a career in the fashion industry? If so get a head start on developing your portfolio with Hannah, who will provide a vast range of ideas, from conception, to presentation using various mediums Mondays 4.30-6pm from 22nd November.

Fran Harkin from Made in Malmsbury will be offering a one day Silversmithing workshop in Woodend for you to produce your own solid silver or gold ring or neck-piece. By the end of the day you will have a professional and unique piece of jewellery to keep. Do you have a car, but are not sure how to look after it between services? Mike Moore will provide many practical tips and demonstrations on basic car maintenance on Saturday 13th November.

Fresh Herbs are expensive to buy so why not grow your own? Attend one session to learn all about herbs, their uses, storage and how to grow them and take your own pot of herbs home. Saturday 27th November.

Plan ahead and make a unique mosaic platter or pot for that personal gift or memento under the guidance of Ettore, on Tuesday afternoons from 9th November.

Sam Luxemburg is offering free communication training for

Woodend Massage & Natural Therapies

Massage Bowen
Reiki Ear Candling

Natalie Taranto Di Hall
0402 534 983 0403 373 731

Please call us to make an appointment 70 High Street Woodend



CASTLEMAINE—GISBORNE CLEANING SERVICE

CHRISTINE ADAMS, FRYERS ROAD, ELPHINSTONE 3448

**Carpet Cleaning Specialists
Duct Cleaning, Window Cleaning, etc.**

For all your cleaning requirements

- no job too big or too small -
obligation-free quotes

Tel: 5473 3307 Fax: 5473 3310

Mobile: 0419 006 591

community volunteers on Saturday mornings during November. If you look in our brochure and see that a class you are interested in has already started, please let us know as we sometimes need to postpone start dates if our numbers are low.

Our super sewing ladies have been extremely busy and have made a gorgeous Christmas quilt that is currently on display at the house. Raffle tickets are \$1 each and all the proceeds go back into the Centre for the community.

We are busy planning for 2011 and are interested in what you would like to learn, whether for employment, up-skilling or creativity. Contact Sarah if you have skills you would like to share or ideas for the Centre.

We are open five days a week and offer internet access, photocopying and printing as well as regular courses during the day, on weekends and evenings across a broad spectrum of interests. We welcome new volunteers and tutors with knowledge to share so come in and meet us at 47 Forest St, call 5427 1845 or visit our website www.wnci.websyte.com.au

Submitted by Sarah Campbell, Coordinator

WOODEND SELF STORAGE (Vic) Pty Ltd



- Store your business documents, stocks or furniture
- 7 day access
- 33 individual sheds
- Affordable prices
- Insurance available

For any enquiries
please contact

**Leonie or Dennis Barker
on 5427 4175**

MACEDON RANGES SELF STORAGE

- * 7 day access
- * Individual units
- * Affordable prices
- * Insurance available
- * Now Fully Alarmed

Store your:

- * Cars
- * Boats
- * Business documents
- * Furniture etc.

Lot 3, Hoyle Court, Kyneton 5422 1898
(Off Beauchamp St) **5422 3488**

Kyneton District Health Service

Woodend Auxiliary

I'm writing this before the event, so we are hoping for, and expecting, a really good result from the Hospital's major fundraising effort the Antiques Roadshow of October 23rd. Our Auxiliary contributed scones, biscuits, and home-made goodies, as well as quite a lot of work, and so did the ladies of the Kyneton Auxiliary.

As well as that, our Auxiliary will be conducting our usual wonderful Christmas Raffle and as we sit in Coles Supermarket selling our one Dollar tickets we hope to chat to many of you. Our raffles are always so well supported!

Our last meeting for this year will be on Thursday November 11th, so as usual it's also our Christmas Lunch.

It will be held at Marjorie Wilton's home, and everyone will bring a plate.

We have a real problem, and that is that there are no new members coming along to replace those who are getting a little weary. Is there anyone out there who can join our little band of helpers? It really is a good way to make friends, and we need you!

Phone Jo on 5427 1909, or e-mail rasbooks@netcon.net.au

BGE

Joinery Quality you deserve

- Kitchens • Shop fittings • Bars

BRAD ELSE

Mob: 0412 355 548 Ph: 5422 2571
New Factory & Showroom

Lot 11 Kyneton - Metcalfe Road, Kyneton
11am - 5pm Fridays or by appointment

WOODEND

NURSERY &

GARDEN SUPPLIES

OPEN 7 DAYS

"LOCAL KNOWLEDGE FOR LOCAL CONDITIONS"

36 URQUHART ST, WOODEND

Tel: 5427 1866 Mobile: 0428 271 866

Full range of garden & landscape needs

Rock, Soil, Sands, Sleepers

Bobcat hire

Welcome to the Woodend Star

Kids Club November Birthdays

2nd	Harry Fox	Turns 5
3rd	Bailey Thorne	Turns 5
3rd	Jordan Crook	Turns 5
4th	Elizabeth Brand	Turns 9
6th	Alice Meacham	Turns 9
7th	Alex Plant	Turns 5
9th	Jacob Lamb	Turns 9
9th	Harry Sanderson	Turns 13
10th	Alice McKinnon	Turns 10
14th	Allan Johnson Molina	Turns 6
20th	Keira Lupson	Turns 9
21st	Jemparra Hickie	Turns 4
22nd	Aden Cooper	Turns 9
24th	Casey Lupson	Turns 12
25th	Bryson Gilbert	Turns 8
26th	Juliette Johnson Molina	Turns 3
27th	Jamieson Muir	Turns 9
28th	Kheldar Tanner	Turns 12
29th	Emily Davidson	Turns 10
29th	Liam Gregoire	Turns 12

Happy Birthday Everyone!

JOIN THE WOODEND STAR KIDS CLUB

Fill in your details below and place in the drop-boxes. Age limit is restricted to 13 years old. Must be resident of 3442 postcode.

Full name: _____

Address: _____

Date of Birth: _____ Age: _____

Phone: _____

Parent/Guardian

Signature: _____

You can collect your birthday surprise by
visiting Collier Office & Business Assist

Sponsored by:



Collier Office
and Business Assist

CHINKA STEEL CONVEYANCING (HEP Steel, Solicitor)

FOR ALL YOUR
PROPERTY SALES AND PURCHASES

RING CHINKA ON

03 5427 2477

74 HIGH STREET WOODEND 3442

Cancer and Natural Therapy Foundation

– *What's on in November 2010*

- Health Awareness Support Group
Offering meditation, reiki healing and general discussion on natural therapies and preventative medicine. Tues 7.30-9.30pm.
- Self Empowerment and Healing Support Group
For “confidence building” and “positive living”. Thurs 10–11.30am
- Film Documentary and Discussion Night for November, Mask of Deception; A compelling documentary that exposes the chemical and food industry's practices that are placing our health at risk. The film will cover gluten sensitivity, artificial sweeteners, additives and much more. Tuesday 30 November, 7.30-9.30pm. Cost: \$10 (\$8 CNTF members) All Welcome!
Held at Neighbourhood House and Community Centre, Elizabeth Drive, Sunbury. Phone: 9740 3977 (Mon/Wed/Fri) or Sandra on 0411 100 947
Website: <http://www.cancernaturaltherapyfoundation.org/>

Netball AGM

The Annual General Meeting of the Woodend District Netball Club will take place in the meeting room of Buffalo Stadium at 7:30 pm, Monday, 15th November. We welcome all interested parties to attend, in particular anyone wishing to join the committee or help out in any capacity.

For information, please contact Rhonda Scanlon on 5427 1174.

THE WATERBLOKE Water Saving Solutions

The Water Bloke Specialises in

- Rainwater Tank Installations,
- Tank To Toilet connections,
- Grey Water Recycling,
- Septic Systems
- Garden Reticulation.

We're based in Woodend, so call us for a free consultation and Water Audit of your home.

BEAT THE DROUGHT THIS SUMMER and Contact us at www.thewaterbloke.com.au or on thewaterbloke@gmail.com

Contact Craig (author of the best selling book "Every Last Drop: The Water Saving Guide) on 1300 650 947 or 0410 275 714



"for all your water needs"

Fundraising Luncheon –

On November 19th, Woodend Rotary will be holding another of their fantastic luncheons. This event is not to be missed – beautiful surrounds, delicious morsels, a glass of bubbles, raffles, fun and so much more. The aim will be to raise funds for local youth projects so be quick, these tickets will sell quickly. At \$25 a head, this is a great afternoon out. Friday 19th Nov, Washington Lane, 12-3.00 pm. Please call Melissa Hocking on 5427 1578 for further information,

Submitted by Caroline Wogan



We deliver to your home the

freshest, best quality, certified organic fruit & vegetables available & guarantee this 100%

Pick from a range of pre-selected boxes or select your own order from our weekly availability list

Phone: **0409 386 875**
or **5429 1156**
email: vivien@netcon.net.au

www.vivsorganics.com.au



kitchen cook table home
Blue Orange Concepts

Just 8 weeks to go . . .

Layby now for Christmas

Shop 2 Telephone 120 High Street, Woodend 3442 03 5427 4500 Open 7 days

Sand | Soil | Mulch | Pots | Pavers | Plants
Water features | Fire wood | Wine barrels
Hire Equipment | Synthetic turf | Sleepers



42 Nursery Road Macedon 3440 Victoria
Email hello@nrgsupplies.com.au
Telephone 03 5426 2400 | Facsimile 03 5426 4972
General open hours Monday–Friday 7.30–5pm,
Saturday–Sunday 9–5pm. Arrangements outside these hours can be made.

SOLAR DIRECT

- Solar Hot Water
- Grid Interactive Solar Systems
- Stand Alone Power Systems

Ph: 1300 55 77 98

Mobile: 0411 269 489

Lancefield

WOODEND MOWERS

• sales • hire •
• service • repairs •

Try before you buy

Chainsaws Brush cutters Ride-ons
Push mowers Hedge trimmers
Cultivators Blowers



Masport 550st Honda Engine
RRP \$899

Our Price \$699

**Save \$200
1 Only**

Open Monday To Friday 9am To 5.30pm
Saturday 9am-4m

No. 5 Dryden Court, North Woodend

Ph: 54 273 116

Mob: 041 352 6761

Stocking Australia's best brands



Mowers for hire:

\$95 per day — Ride On

\$35 per day — Push Mower

Delivery available

Proudly supporting the
Woodend Children's Community Garden

Chaplaincy at Gisborne Secondary College

Open Garden Tieve Tara – November 14

Come and visit one of Mt Macedon's iconic gardens as featured in Your Garden, Weekly Times, Domain, Snapshot, Getaway & more.

Magnificent garden with two lakes & Treasure Island for the children, majestic old trees, rose walk & arbour all on 7.5 acres. 11.00 – 4.00 Sunday, 14 November, 751 Mt Macedon Rd, Mt Macedon (property on the left just before the Fire Station). Gisborne Secondary College String Ensemble will perform at 2.00pm. Afternoon tea will be available to purchase. Entry \$7.00 – Children under 13 free.

Our Committee works very hard to raise the money to keep the chaplaincy program going. More help is urgently needed. We appreciate the support we get from the Community. Please consider how you can help this worthy cause. The needs are great. Submitted by Bronwyn Tacey

Family Heritage Walk:

A reminder that next years ceremony will take place on Sunday 3rd April. Applications are now open for anyone wishing to dedicate a plaque and tree at next year's ceremony. We have a limit of six new plaques and trees each year. We have extended the closing date till November 3rd the day after Melbourne Cup Day. This is definitely the last date for applications for next years ceremony so if you would like an information kit, please phone the Courthouse on Wednesday 54273361, leave a message on 54 271893 or email us on wdhs@vicnet.net.au

Ruby Pickles

Handmade ♦ Organic ♦ Unique



Visit our webstore where
you'll find

Mobles, Money Boxes,
Bookends & Coat Hooks
all handmade in Woodend

Organic + fair trade, soy,
bamboo & cotton childrens
clothing sizes birth to 3yr

Recycled cardboard, cloth
and wooden toys

rubypickles.com.au

Woodend Star Readers Offer

Receive 10% off* your purchase when you
enter 'woodend star' in
coupon box upon checkout

*discount applies to product only

Open Gardens in Newham

Proceeds to Newham Primary School, Saturday 13th November, 10.00am - 4.00pm: Cost: \$10 (for the 2) at 159 Dons Road & 60 Palmer Crescent, Newham. Two Newham gardens, which are very different in style and approach, will be open to the public.

The garden at 159 Dons Road is designed in a more formal way with 4 distinct areas of interest. The centrepiece is a large garden with a mixture of natives and exotics, set amongst winding paths and pergolas. It is a bold gardening statement, where colour abounds.

The garden at 60 Palmer Crescent has been allowed to evolve naturally borrowing much from the existing landscape. Wood and stone from the property have been reused in interesting ways, while in other areas; form has been highlighted with new structures.

Ph.: Chris Wiggett 5423 5279 for details

Newham Garden Club Famous Plant Sale

Saturday 13th November at Newham Hall, 1292 Rochford Road, Newham. The Newham garden club is once again holding its 2 yearly fabulous plant & produce sale. The doors will open at 9.00 and an early coffee or tea will be available at the Garden Café with delicious homemade cakes. Along with the garden club propagated plants that thrive in our local conditions (peonies, vegetables, herbs, native & exotics), we will be selling cards, preserves & fresh eggs. Local planting advice will be provided by Garden Club members on the day.

A wonderful hamper of garden goodies will be raffled and all children who attend will be given a free plant.

Come along and join the fun! All proceeds go to local community projects. Contact: Jenny Waugh 5427 0408

Submitted by Fran Spain



CFA Fire Meetings Coming Up

The CFA is about to commence its Fire Ready Victoria Campaign sharing vital messages about basic fire behaviour, how our surroundings affects fire, how to identify risks around our homes and the dangers of bushfires and what they need to do on a high fire risk day.

This year will be significant as it includes information based on the recent Royal Commission, especially in relation to the 'Stay and Go' policy.

The aim is to reach residents, especially those in high risk areas (Woodend is in the Top 52) and ensure they have ample information from which to make an informed decision in the event of a bush or grassfire and importantly, from a preparedness point of view, be able to identify and reduce their risks prior to the fire danger period.

The four Meetings, Thursday 18 November, Tuesday 23 November, Thursday 2 December, and Monday 13 December, at the Woodend Fire Station in Urquhart Street will each start at 7.15pm, and will be presented by CFA Personnel with an informative and interactive PowerPoint presentation.

ENJOY YOUR PRECIOUS WEEKENDS

TERRY'S GROUND CREW MOWING & MAINTENANCE

0400 909 303

MACEDON RANGES VOUCHERS ACCEPTED
GET READY FOR SPRING AND SUMMER

SMALL ACREAGE SPECIALISTS



REGISTERED BUILDING PRACTITIONER (Est. 1992)

SPECIALISING IN:

- Renovations & Specialist Carpentry Work
- Heritage Building
- Pergolas & Decks
- All General Home Maintenance
- Prompt & Reliable Service
- 10 years based in macedon ranges & surrounds

For a free estimate phone Darren - 0438 756 231/5427 2215

Chiropractor – Mark Brown

- 20 years in Practice.
- Upstairs at Westpac Bank, 75 High Street
- Muscle realign and stretch techniques
- Gentle spinal adjustments
- Shoulder, elbow, wrist, knee, foot problems
- Headaches, migraines, asthma, neuralgia, digestive problems



Phone 5427 1456 or 0407 526 403

Quality Blinds at factory direct prices

- Sunscreen/Blockout Blind
- Latest Styles/Fabrics/Colours
- Automated Blinds
- Roller/Roman Blinds/Venetians
- Exterior Awnings
- Professional Installation Team

Ring Now for a **Free** In House Consultation/Quotation

Mark 0437 759013

Simon 0458 338995

Contemporary Blinds
Where Style is Affordable

WARNER'S JEWELLERS EST. 1912 ~ 4th Generation Jewellers

Manufacturing Jewellers *Watch & Clock Repairs*
Jewellery Repairs *Valuations & Rethreading*

Beautiful selection of

PANDORA™
Life has its moments - make them all unforgettable.

97 High Street, Woodend

5427 1573

A few minutes of your time could help save your home ... and more! We've all heard it before ... 'it will never happen to me!' ... but it could!

How much is it worth to give you the best possible chance to save your home in a bushfire – or even lives? All we need is a few minutes of your time.

We want to get to as many people as possible in the bushfire prone areas. We would encourage, at the very least, that residents attend a community meeting in their local area; these meetings are a great opportunity to obtain an overview of current and projected on-ground conditions along with key information on bushfire preparation and survival.

The more you know, the better prepared you will be. The key messages of 'Fire Ready Victoria' are that: What is the risk in your area? How can your house be made safer? How can people protect themselves?

Do you and your family know what to do if faced with a bushfire? Residents need to have a bushfire survival plan



Accountants, Advisors & Planners

Office Locations:
111 High Street, Woodend Ph: 03 5427 8000
2/19 Bourke Street, Kilmore Ph: 03 5782 1273
email: admin@riverwoodgroup.com.au
website: www.riverwoodgroup.com.au

RIVERWOOD GROUP

Riverwood Group can offer a *Total Financial Solutions* package for you and your family. Take a look at some of the services we provide:

Taxation
All your taxation requirements to suit individuals and small businesses.

Investments to Create & Protect your Wealth
Managed Funds, Indexed Funds, margin Lending and more

Planning for Retirement
Allocated Pensions, Centrelink Benefits and Payments

Stockbroking
Recommended lists, broking facility available, share updates

Superannuation & Rollovers
Advice, placements, Self-Managed Super Funds and Eligible Termination Payment Advice

Other Services
Home & Investment Loans, Business Loans and Leasing, Income Protection, Life Insurance, Professional Indemnity, Estate Planning and more.

You should not expect a fire truck to defend your property
If you would like more information visit cfa.vic.gov.au.

The Bushfire Season is fast approaching.

Isn't it great that we've had plenty of rain in recent months, but this will grow grass that will eventually dry out. On top of that there were some significant storms that will have increased the fuel loads in our surrounding forests with fallen limbs and trees.

There is always a dry and dangerous period every year, the only thing that changes is how many months it will go for. So we all need to 'be prepared'.

NOW is the time to start preparing to reduce the risks of fire danger to you, your family and your property.

The ferocity of a fire depends on a number of factors, including the weather, slope of the ground and especially the amount of 'fuel' on and around your house or property. Fuel is the only factor that can be altered before an unplanned fire starts. Fuel reduction is therefore one of the most important preventions you can undertake, with the most effective methods including mowing, raking, slashing and burning.

This is your last chance to burn off!

Be careful burning off – even a small fire

For small clearing fires, a permit is normally not needed, however there are still strict guidelines you should be aware of.

By law, the size of pile of material being burned must not exceed 2 cubic metres, and you should clear a firebreak at least 3 metres around a fire.

The space above the fire, and the space above all ground within 3 metres of the fire, should be free of any flammable material and vegetation. Larger burn offs, such as piles of stumps, etc. require a council 'Permit to Burn'.

If you are unclear about your specific circumstances, you can check the local laws via the internet (www.macedon-ranges.vic.gov.au) or visit your nearest Macedon Ranges council information centre, where the application forms are available.

Have you checked or changed your smoke alarm batteries

Continued over the page

jigsawstairs@optusnet.com.au
0408 153 124
JIGSAW STAIRCASES
P.O Box 93 Woodend Vic 3442



Viatek
IT'S ABOUT YOUR BUSINESS

Our Managed Print Services deliver benefits to local businesses by:

- Reducing print output costs
- Increasing visibility of costs
- Improved document workflows

To obtain a free consultation for your business please call Piers Brown on 0437 644 650



WOODEND COMPUTER SERVICE
Sales - Service - Training & Help
THE BANK - OFFICE 3 - 75 HIGH ST WOODEND
JASON JOHNSON - 0400528129
pcs@live.com.au

The CFA recommends that all Victorians should replace your smoke alarm batteries around the time that you turn back your clocks for the end of daylight saving – which is NOW. The message is quite simple: only working smoke alarms save lives. If there's no sound from your smoke alarm, there's no warning.

Remember, it is normally smoke, not flame or heat, that kills the majority of fire victims. When asleep, our sense of smell is largely diminished, and we're unlikely to smell smoke. The smoke may also put occupants into a deeper sleep, so a smoke alarm actually helps wake you. And, with all of the plastics, materials, electronics and chemicals around - house smoke can be extremely toxic.

For further information contact Captain Mick Christie on 0419 870 601 or 1st Lieutenant Mike Dornau on 0409 093 935. Or you can visit our website: www.woodendcfa.org.

The Woodend CFA is a volunteer emergency service, committed to Creating a Safer Community.

Submitted by 1st Lieutenant Mike Dornau, Woodend CFA

TRADE & SERVICE DIRECTORY

AIR CONDITIONING

SPLIT SYSTEMS INSTALLATION AND SALES

Efficient heating & cooling
For free quote, phone Dave
DW Air 0407 248 454

DRESSMAKER

Beryl's Tailoring

DRESSMAKING, ALTERATIONS,
BRIDAL, EVENING & DAY WEAR,
LADIES AND MEN'S REPAIRS



Beryl Bachelor
QUALIFIED DRESSMAKER, NEWHAM

BY APPOINTMENT ONLY
MON TO FRI 9 - 5

5427 0568 0418 510 179

ELECTRICIAN

Minorlink Electrical Contracting

Servicing the
Macedon Ranges
and Beyond

Greg Simpson
Ph: 0407 332 413 R.E.C. 9285

ELECTRICIAN

Macedon Ranges Electrics

REC 17836

MasterCard

VISA



5422 2182



Split System Air Conditioning
Television/Data/Antenna
All Electrical Installations
Contact Dan McCarthy 041754 2235
31 Redesdale Rd Kyneton

FIREWOOD

O'Callaghan Bros REDGUM FIREWOOD SUPPLIERS SPLIT RED GUM FIREWOOD

Excellent Quality Delivered Dirt Free
Ph 7 days
0407 036 800 0429 957 091

GARDEN MAINTENANCE

ABLE GARDEN MAINTENANCE

Weeding Mowing
Shrub/Rose/Fruit tree pruning
Reasonable rates, fully insured
Phone Gerry : 5427 4543 0407 317 491

HANDYMAN

Rowdy's Handyman Services Home & Garden Maintenance No Job Too Small!

- Carpentry,
- Plastering,
- Tiling
- Painting



P 5427 0072
M 0416 274 732

METAL GATES



BVM METALCRAFT
Ben McKee
OLDWORLD & MODERN STYLE
GATES & FENCING
bvmmetalcraft@hotmail.com
04 222 88 768

PAINTING

BD CROSBIE PAINTING

Ben T: 5427 2164
M: 0431 205 576

Household & Commercial
Interiors & Exteriors
Painting, Staining & Oiling
Decking, Stairs & Hand Rails
Free Quotes

PAINTING

GEE'S Painting etc.



Call Steven
0402 079 482

SPACE AVAILABLE

Space is still available
in the Trades Section.

Great exposure at just
\$30 per issue.

Call Alexia for further information 5427 3092

STONELAYING & PAVING



Stonemason & Paver
specialising in

- Retaining Walls
- Drystone Walls
- Stone Houses
- Paving
- Over 20 years' experience

Cameron Dunn
Ph (03) 5427 4778 Mob 0429 162 589

TAXI SERVICE



CROWN
CABS
Your Local Taxi Service
Bookings: 9310 5422

TRADE & SERVICE DIRECTORY

ANIMAL CARE



A reliable home care service for pets & farm animals, servicing the Macedon Ranges since 2003
Phone Judy on 5427 1352

CLEANING



Not enough hours in your day?
Need help managing your home?

Stephen Farrell
Personal Services

Very reasonable rates
Through out the Macedon Ranges
Phone 0419 526 275



COUNSELLING



Keryn Allan
Dip.Prof.Couns.

COUNSELLOR

Grief & Loss
Stress, anxiety & depression
Anger management
Workplace issues
Behavioural problems
Relationship issues

Phone: 0417 011 300
Email: kezallan@ozemail.com.au

ELECTRICIAN



All types of electrical work
Kyneton, Woodend & surrounding districts
"no job too big or small"

Travis Brown 0400 035 442
P: 5422 2568 F: 5422 6908

EXCAVATIONS

Bobcat & Excavating
Truck & Trailer
Handyman Services
Garden Design
Mowing
Fencing



Robert

0401 605 488

EXCAVATIONS

Cheap'n'Neat Excavations

Bobcat/Excavator/12m Tipper hlre
Post hole digger
Rubbish removal
Free Quotes
Contact Les 0418 556 634

HAIRDRESSING

Just Haircuts

For the whole family!
By Appointment.

Dawn 0411 025 445

HOME INTERIORS

Present Well
HOME INTERIORS - WOODEND



- KITCHEN, LAUNDRY & BATHROOM CONCEPTS
- COLOUR CONSULTANCY
- LIVING ROOM & BEDROOM DECOR
- PREPARING A HOME FOR SALE

CALL DANIELLE FORMICA
ON 0400 664 231

www.presentwellhomeinteriors.com.au

HOME MAINTENANCE

Home maintenance & landscaping
service including decking,
pergolas, carpentry & painting.

Stuart 0409 150 629
AH 5427 2465

PAINTING

Painting & decorating
Residential & commercial
Rendering
Prompt & professional

Rigoni Painting
Phone 0430 371 001



PHYSIOTHERAPIST

Kyneton Physiotherapy
ROBERT ROUSE

B. App. Sc. (Physio) Member A. Physio. Assoc.
Registered for Comcare, TAC, W/Cover,
Vet. Affairs

NO REFERRAL NECESSARY

74 High St. (Corner New St.) Kyneton

5422 2290

PSYCHOLOGIST

Sam Luxemburg

Registered Psychologist

- Personal Counselling in Woodend & Romsey (Medicare rebate available)
 - Counselling Training
- Myers-Briggs personality testing

Phone: 0428 270 401
www.luxcollege.com.au

TREE SERVICES



- tree pruning / removal • stump removal
- tree planting / transplanting • rope & harness climbing
- confined space removal • fully insured

Professional commercial & residential tree maintenance
all work carried out by qualified arborist

Call Anthony 0417 059 969

TRENCHING

ASHBY'S TRENCHING

- Irrigation.
- Site levelling.
- Cable and pipe laying
- On tracks fit in small areas

Phone Mark 0427 973 360

WRITING SERVICES

a few good
WORDS

Editorials, Publicity, Advertising, Proof-reading, Letters.

Nadine Hartnett
Freelance Writer

0439 399 838
nhartnet@blapond.net.au

SPORTS NEWS

Macedon Ranges Basketball Association

Mid-Week Ladies are looking for new players. Games are played from 10am-11.30 am Wednesday mornings, school term only, in a fun and relaxed environment. You are welcome to submit your own team or join one of our existing teams.

All fitness levels are welcome even if you have never played Basketball before. Child care is available in the next room by calling the Macedon Ranges Shire council on 54220 239.

For more information on Mid – Week Ladies Basketball please contact Emma Sambrooks 5427 0591 or 0412 558 788, Buffalo Sports Stadium 54273 411

BEAUTY IN TOUCH

Classical Beauty Therapist – Kerry Robinson

- Deep Cleansing Facials ▪
- Waxing ▪ Manicures ▪ Pedicures ▪
- Eyelash tinting ▪

Please call 0412 479 901 for an appointment
40A South Road, Woodend

Now Available

LARGE OFFICE SPACE

AT

75 HIGH STREET

Fully Air Conditioned

Natural Light

Kitchen Facilities

CONTACT

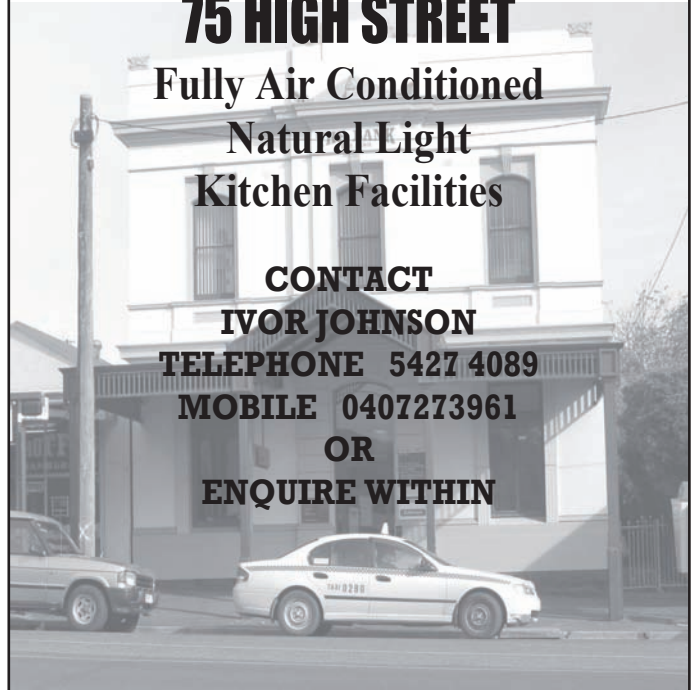
IVOR JOHNSON

TELEPHONE 5427 4089

MOBILE 0407273961

OR

ENQUIRE WITHIN



Making Victoria FireReady



Start preparing for the fire season now

If you live in the bush, on the coast or along the urban fringe, you need to start preparing for the fire season now. Your survival, and the survival of your family, could depend on it. For a free FireReady Kit, or for more information on how to prepare, act and survive, visit www.cfa.vic.gov.au or call 1800 240 667.

PREPARE. ACT. SURVIVE.

FireReady



For more information contact: 1800 240 667 www.cfa.vic.gov.au