

# THE NEW WOODEND STAR



Circulation of 3190 throughout  
Woodend postal district, Newham, Heskett, Ashbourne,  
North Woodend, Hanging Rock, Carlsruhe, Cobaw.

**AN INITIATIVE OF THE ROTARY CLUB OF WOODEND**

July 2010

A Monthly Community Periodical

First Publication 1997

Volume Fourteen No.6

## All through the night

*10 Years ago Jack Simpson was diagnosed with Multiple Sclerosis for which there is no known cure. Yet Jack is cleared of his symptoms and continues to progress.*

Jack's 'miraculous' recovery is attributed to the intercession of Australian pioneering nun Mary MacKillop, who is to be canonised in Rome on 17th October, 2010.

Now Jack wants to go to Rome for her canonisation—to say 'Thanks' for his second chance at life. Will you help us to get him there?

Local musicians, choirs and singers have committed to perform 'All Through The Night' on Saturday 17th July to Sunday 18th July in St Ambrose Church, Woodend.

This non-stop marathon of music and song aims to raise \$5000 for Jack's pilgrimage to Rome.



Performances from local groups will include a wide variety of styles ranging from soloists to groups, including Proteus Ensamble who will present a performance of meditational music, sacred and secular, classic to modern, for violin, piano, chello and

baritone. Proteus Ensemble will present a performance of meditational music, sacred and secular, classic to modern, for violin, piano, cello and baritone. Proteus Ensemble will be performing from 9-10pm.

You can help by sponsoring this event for \$5, \$10, or \$20 per hour of continuous music and song, or you can donate your chosen amount.

Contributions or cheques can be mailed to St Ambrose Parish Woodend, or drop off at the Woodend Pharmacy.

Please come along and enjoy the fabulous presentation of music and song by our talented locals at this marathon of music

Enquiries to Frank Donovan (Campaign organiser) on 0402 710 768. Pledge sheets can be collected from the Woodend Pharmacy or Collier Office and Business Assist.

## Upcoming Feature

The New Woodend Star will print a special October feature about Woodend and surrounds. If you're a local business with something special to promote this spring, we invite you to place an advertisement and/or editorial in this feature. For information, phone Alexia on 5427 3092.

## Woodend Winter Arts Festival 2010 goes off with a bang!

**WOODEND  
winter  
arts  
FESTIVAL**

The 2010 Woodend Winter Arts Festival kicked off with some great news from Regional Development Victoria on Friday 11 June, who awarded the Festival a \$28,000 grant for this year's event. The political cartoon exhibition's opening was the first event of the Festival and this brilliant exhibition by some of Australia's leading cartoonists attracted a huge crowd who crammed into the lovely new Gallery space at the back of Cafe Colenso.

At 7:30pm Forest St was a sea of cars as the last cars quickly parked for the fireworks display. The rain and wind had stopped and hundreds of children from all over the region shouted their count downs, over and over again until the fireworks started. It was a brilliant display making the most of the naturally black skies without any competition from city lights. Then we were off to hear Joe Chindamo's Jazz trio - what a performance! Faces softened into smiles at his brilliance and humour, weaving popular themes and Bach fugue subjects into the jazz medium.

The crowds reappeared for the Saturday and the Sunday with the first event being Barry Jones's sold out photographic exhibition at Duneira, the Organs Buses company Director Matt Baird personally driving the donated bus to this stunning property. Leigh Hobbs won over the kids with drawings of Old Tom,

and the poetry workshop and slam were a huge hit, with teenagers and adults competing and sharing their ideas. Claire Edwards showed what a world-class percussionist can do, the Thomson tenors from Kyneton performed with consummate skill and the large audiences continued for all the concerts, most receiving standing ovations and cheers. Tobias Cole thrilled with his operatic virtuosity and the Monteverdi Vespers inspired the biggest audiences with its special 400 year anniversary performances. The Koehne Quartet from Vienna dazzled with its energy and power. The Japanese drumming was again sold out and appealed to all ages. ABC Classic FM felt it was the best Festival in years and we learned that we are being broadcast all over Europe:



*Barry Jones once again presented to a sold out audience, at Duneira Mt Macedon*

*continued on page 2*



## New Members

### The Rotary Club of Woodend

Put something back into this great community and be part of a worldwide organisation that helps build goodwill and peace allowing ordinary people to achieve extraordinary things and bring about exceptional change in the world.

Contact Brendan 5422 6442

## The New Woodend Star

An initiative of the Rotary Club of Woodend Inc.  
The Bank, 75 High Street, Woodend, Vic. 3442  
ABN 32 685 225 161 No. A0021518E

Layout & printing by Collier Office & Business Assist

For people wishing to submit articles simply place the information in the strategically placed drop-boxes. These are located at the Liquor Shop, Collier Office & Business Assist, The Bank @ 75 High Street and Woodend Newsagency.

**EMAIL articles preferred: sales@collierooffice.com.au**

**Circulation: 3190 copies throughout Woodend and district.**

Disclaimer: Articles and comments published in this newspaper are the result of contributions from local groups and relevant news articles pertinent to the Woodend district. Neither the Rotary Club of Woodend Inc., The New Woodend Star nor the editorial team are liable for any mistakes, omissions, or misprints. It prints and makes no representation as to the truth or accuracy of any description, and accepts no liability for any loss suffered by any person who relies on any statement contained herein. The opinions expressed are not necessarily those of the editorial team. The committee reserves the right to omit, reject, cut, alter or otherwise re-work submitted articles to make them suitable.

Committee: Barry Napthine, Ivor Johnson, Claudia Green, Brendan Watters, Alexia Downie, Sue Macklin & Jane Watters

**Closing date for inclusion of articles or advertising for each issue is the 15th of the month prior to publication**

### Information for advertisers

*All rates include GST & are priced per month.*

**Business card** (55mm x 90mm) ..... \$45 inc GST  
**Trade Page** ..... \$30 inc GST  
**Quarter page** (90mm x 134mm)..... \$95 inc GST  
**Half page** (134mm x 190mm)..... \$170 inc GST  
**Full page** (190mm x 277mm) ..... \$295 inc GST  
**Insert** (of your printed brochure)..... \$210 inc GST

*Advertisers: Please note – it is in your interest to book and pay for a year in advance, as a 10% discount applies to any full year pre-paid booking. Any existing pre-paid ads will revert to the new rate on completion of the pre-paid period.*

Advertising bookings to be made with Alexia Downie on 5427 3092 or sales@collierooffice.com.au.

Accounts queries can be made to Sue on 5427 4089 during office hours or nws@johnsonwoodend.com.au  
Mail should be directed to: New Woodend Star,  
C/- The Bank, 75 High Street, Woodend 3442.

#### Woodend Star Publication Dates for 2010

August	1st August	October	27th September
September	30th August	November	25th October
	Dec/Jan	29th November	

*Changes to advertisements, new advertisements or cancellations must all be made by email or in writing. All advertisements will be placed and charged for until notified otherwise.*

#### SUBSCRIBE TO THE NEW WOODEND STAR

Do you live outside the New Woodend Star distribution area? Be sure to receive your copy every month by subscribing. A yearly subscription of 11 issues is just \$27.50. Post to New Woodend Star, C/- The Bank, 75 High Street, Woodend 3442.

Name: \_\_\_\_\_

Address: \_\_\_\_\_

Phone: \_\_\_\_\_ Enclosed: Cheque/Money Order for \$27.50

as WWAF is marketed and exchanged by the ABC Classic FM as part of a system that has European Festivals broadcast in return here. Most of WWAF's audience purchase tickets well in advance of the festival's beginning and are repeat, loyal audiences. We had a tour group from Canberra who stayed over the long weekend (they have come down before and would have brought more people only there is not enough local accommodation), and a bus load of students from Darwin High School drove down especially to hear the Koehne Quartet.

The town buzzed: even people not attending the festival were very aware of the event and there was a sense of joy and celebration in the streets.

This event could not happen without the huge local community support and good will, nation-wide arts support, and the world class acoustics of St Ambrose Church. Thank you all!

**Paul Groves**  
Mobile 0414 928 491

## Computer Sales, Repairs & Consulting

Home and Office Networking  
Onsite Repairs and Maintenance  
New Computer Systems

paul@pcweirdness.com

# OFFICE SPACE

**NOW AVAILABLE**  
Fully Air Conditioned  
Access to Photocopier  
Kitchen Facilities  
Ground Floor Location with  
Natural Light.  
**PRIME LOCATION**  
75 High Street, WOODEND  
Contact Ivor Johnson 5427 4089

## WOODEND

**Proud to be Pokie-free**

**Viatek**  
IT'S ABOUT YOUR BUSINESS

Our Managed Print Services deliver benefits to local businesses by:

- Reducing print output costs
- Increasing visibility of costs
- Improved document workflows

To obtain a free consultation for your business please call Piers Brown on 0437 644 650

## Volleyball Mini Tournament

The Cambodian Kids Foundation (CKF) has recently collaborated with some of the wonderful people in Woodend to help develop the Saing Sy Centre, providing education for Cambodian children.

The Buffalo Sports Stadium will support the Cambodian Kid's Foundation by running a Volleyball 'Fundraising Tournament'. All proceeds from the \$10 fee will go to CKF.

Come along for a fun night of volleyball and help support the Cambodian Kids foundation. All players and teams are welcome. We will also be taking enrolments for our regular volleyball season on the night, which will start the following week.

Thursday 15th July: from 7.00pm – 9.00pm at Buffalo Sports Stadium. Cost is \$10 per player with all fees donated to Cambodian Kids Foundation

## Premier Office Assist

Seeking a dedicated professional to help with your business or require temporary assistance to fulfil staffing shortages?

**Bookkeeping**   **Temping Services**   **MYOB/Quickbooks**  
**BAS/PAYG**   **Word Processing**   **Data Entry**  
**Secretarial**   **Reception**   **Administration**

Contact *Virginia Crowhurst*

Mob 0421 557 171 premierofficeassist@bigpond.com

## Woodend Visitor Information Centre

High Street Woodend

Ph 1800 244 711

## Woodend Rainfall Report 2010

Each month we add the rainfall details and the year to date total. Our rainfall report shows, 2005, 2006 2007 2008 2009 and 2010 comparisons. Please note that your own rainfall readings may not exactly match these.

	2005	2006	2007	2008	2009	2010	
January	47.4	49.8	83.5	17.1	0.08*	54*	Jan
February	72.2	53.1	27.4	22.1	2.5*	71.5*	Feb
March	5.8	20.6	35.7	25.4	42.5*	121*	Mar
April	18.8	46.4	20.2	20.4	51*	45	April
May	13.6	58.8	95.7	43.7	30.5*	39	May
June	116.7	36.0	105.1	88.7	66.5*		June
July	76.9	91.6	83.3	112.5	76.5*		July
August	125.0	30.8	34.8	52.2	107.5*		Aug
Sept	55.2	50.6	49.8	42.0*	88.5*		Sept
Oct	49.8	5.2	12.1	13.0*	46*		Oct
Nov	72.4	13.0	91.0	67.2	99*		Nov
Dec	40.0	31.0	101.2	96.0*	60*		Dec
<b>YTD:</b>	<b>693.8</b>	<b>486.9</b>	<b>739.8</b>	<b>600.3</b>	<b>670.5</b>	<b>330.5</b>	<b>YTD</b>

This is the wettest start to a year for a long time and if we just get average falls from now on, we will exceed the long term average which is about 800mm per year.

.Figures for 2008, 2009 & 2010 include information from a different location indicated by \*.

For the year of 2009 there was rainfall of  
**670.5mm**

1 inch = 25.4 mm therefore the total year to date is 13.07 inches

## Awards Honour Regional Achievers

Donna Petrovich, State Member of Parliament for Northern Victoria Region is encouraging individuals, businesses and community groups that are making a significant contribution to our community to nominate for the 2010 Regional Achievement and Community Awards.

"These prestigious awards pay tribute to regional Victorians who are the pillars of our communities," said Mrs. Petrovich. "Our high achievers and community contributors deserve recognition. I encourage you to consider making a nomination on behalf of someone who deserves a pat on the back."

Nominations are now open in the following categories:

- Regional Development Victoria Business Achievement
- AwardParks Victoria Environment and Sustainability Award
- RACV free2go Youth Community Involvement Award
- Fonterra Dairy Leadership Award
- Regional Development Victoria Trade and Career Achievement Award
- Parks Victoria Regional Achiever Award
- Prime Super Community Group of the Year Award
- Blue Scope Distribution Leadership and Innovation Award

Prizes include television exposure on Prime Television or a share in \$12,000 in AwardSaver Accounts from the Commonwealth Bank. Nominations close July 14 and nomination forms are available from Donna Petrovich's office at 84 Sydney St. Kilmore, Commonwealth Bank branches, or by phoning the awards office on 9720 2277, emailing vic@awardsaustralia.com.au.

ADVERTISEMENT

# Donna Petrovich MP

State Member of Parliament for Northern Victoria Region

*Working for the Woodend Community*

*Your Country Voice*



 5782 2011  
 84 Sydney Street, Kilmore

Authorised by D Petrovich, 84 Sydney Street, Kilmore.

## Woodend Youth Space

The Woodend Youth Space operates on Thursday afternoons between 4:30pm and 6:30pm at the Woodend Scout Hall with other events and activities happening during school holidays. We provide a variety of activities that are requested and organised by the young people who attend the group. Some of the activities include music nights, photography & arts nights, jewellery making, parkour, pizza and pasta and much more. We have also participated in some community projects including an arts project, volunteering and community consultation. Check out some of the photos on the Woodend Youth Space on Facebook page. The activities planned for this school holidays will be announced soon, and will be posted on Facebook (Woodend Youth Space).

This program is for young people aged 12 years plus and we provide adult supervision at each activity we provide. To cover some of the cost we ask the young people to bring a gold coin with them. Please contact me if you have any questions or come down and say hi to us.

submitted by Kathy Dent Macedon Ranges Youth Services

## Johnny Cash Tribute Show

Johnny Cash has been a recording star since 1955. A quick review of his career shows he was not merely a most successful country artist, but that he is also one of the most successful artists in popular music having put 48 singles on the Billboard 100 pop charts which is one more than The Rolling Stones. He placed 26 albums on the pop charts between 1955 and 1972, the same number as the Beatles during that span.

The Johnny Cash stage show is truly a tribute to Johnny Cash. Canadian Entertainer, Dail Platz has been able to capture not only the vocal style but also the look and the personality of Johnny Cash. Dail is also one of Australia's top Multi-Instrumentalists playing 5 string banjo, acoustic guitar, electric guitar, mandolin & fiddle. Tickets available by calling 1300 88 88 02 or online at [www.takeapeek.com.au](http://www.takeapeek.com.au) or at any MRSC customer service centres.

## Contribute to your local community news!

Winter is a difficult time news-wise. Sporting clubs are in recess, community groups haven't much planned and even the gardens are dormant at this time of year!

Help us keep the *New Woodend Star* full of interesting local news by submitting a contribution, no matter how big or small. *The Star* isn't used as a political 'soap-box' but is a great opportunity to tell a good news story about someone or something in your group, club or workplace.

It's easy – just send an email before 15th of the month before the month you want the information published. All contributions are considered by the editorial committee prior to printing. Email details on page 2 of this issue!

### Chiropractor – Mark Brown

- 20 years in Practice.
- Upstairs at Westpac Bank, 75 High Street
- Muscle realign and stretch techniques
- Gentle spinal adjustments
- Shoulder, elbow, wrist, knee, foot problems
- Headaches, migraines, asthma, neuralgia, digestive problems



Phone 5427 1456 or 0407 526 403

BodyMinding  
alexander technique: an education for living well.

### Alexander Technique

Reduce, manage or eliminate stress headaches, muscle and joint pain. The Alexander Technique addresses the underlying problems and puts you back into control for yourself.

Margaret McGill has been teaching Alexander Technique for more than 20 years.

Contact Margaret on 5428 6461

### Magnetic Websites

Martin Beaumont

- PHONE 03 5427 4478
- MOBILE 0414 274 988
- HTTP [www.magneticwebsites.com.au](http://www.magneticwebsites.com.au)
- EMAIL [martin@magneticwebsites.com.au](mailto:martin@magneticwebsites.com.au)

Developing websites for the Macedon Ranges and beyond, ask how we can help you get online

WOODEND  
**COMPUTER SERVICE**  
Sales - Service - Training & Help  
THE BANK - OFFICE 3 - 75 HIGH ST WOODEND  
JASON JOHNSON - 0400528129  
[pcs@live.com.au](mailto:pcs@live.com.au)

LEADING HAND CARPENTRY  
COMPLETE BUILDING SOLUTIONS

Call 0439 360 896 or email  
[shannon@lhcarpentry.com.au](mailto:shannon@lhcarpentry.com.au)



REGISTERED  
Building Practitioner





### Under New Management

New Release + a free Weekly for Overnight \$5  
6 weeklies for \$6

#### NEW DEALS

MAD MONDAYS

\$3 New Releases

CHEAP TUESDAYS

\$8 - 2 New Releases + 2 weeklies

Mon - Fri: 11 am - 9 pm

Sat: 10 am - 9 pm

Sun: 12 pm - 8 pm

65 High Street Woodend

Phone: 03 54274011

All news items, articles and community news columns must be received by 15th of each month.

## KYNETON EQUIPMENT & PARTY HIRE

FOR ALL YOUR HIRING NEEDS

8-12 BEAUCHAMP ST PHONE (03) 5422 2311  
KYNETON VIC 3444 FAX (03) 5422 2930

Email: [kynhire@bigpond.net.au](mailto:kynhire@bigpond.net.au)  
website: [www.kynetonhire.com.au](http://www.kynetonhire.com.au)

Kirsty Nuttall

### MACEDON RANGES PICTURE FRAMING SERVICE

By appointment only  
Phone/Fax: 5427 3511  
Mobile: 0417 337 857

## L2P comes to Gisborne

The L2P learner driver mentor program is about to be launched in Gisborne, and program coordinator, David Norris, is looking for volunteers.

Since the introduction of the compulsory 120 hours driving practice for learner drivers some young people have found themselves unable to clock up the hours due to lack of access to a car or supervisor. This VicRoads sponsored program utilises the skills of trained volunteers to supervise these disadvantaged learner drivers on a one to one basis.

Project Officer David Norris said "that since the programs introduction in Kyneton earlier this year 11 young people have been matched with volunteers and have clocked up 5,500km's of practice in the program's car".

Learner drivers receive a number of driving lessons with a registered driving school to gain basic car control skills before beginning driving sessions with a Volunteer. Throughout their time in the program learners receive additional professional lessons to assess their progress and provide further training.

Volunteers from the local community are provided with training by VicRoads to assist them with the management of the learner driver and to give them a better understanding of the L2P Program before being matched with a learner driver.

All running costs, volunteer training, insurance and a car are provided by the program at no cost to the Volunteer. The car stationed at Gisborne will service students throughout the southern end of the shire.

If you are interested in helping please ring David on 5421 1631 or 0448 827 120.



## Joanne Duncan STATE MEMBER FOR MACEDON MP

Friends,

At the heart of good governance is honesty & accountability, as well as an understanding of the issues confronting the whole of society.

If you have any concerns you wish to raise, please do so.

Feel free to call me on:

**5428 2138**





**DRIVING SCHOOL**

Fully accredited, licensed instructors  
Manual or Automatic  
Gift Vouchers Available  
Serving the Macedon Ranges & Sunbury

**Call Frank 0417 014 450**

## Lawns are coming back!

With a wetter season upon us it is great to see a new small engine Hire, Sales and Service business has opened up in Woodend to service the needs of the Greater Woodend district.

Woodend Mowers are located at 5 Dryden Court North Woodend (just down from Elgas and Barkers Trailers). They care for any make of engine diesel or petrol, from chainsaws, pumps, and generators to zero-turn mowers.

Chris and Sally have just completed 7 years service with the Defence Force and are enjoying the colder climate compared with the heat of Northern Queensland. Please drop in and say hello and welcome them to the district.

As a major sponsor of the Woodend Community Children's Garden located at the Woodend Primary School, purchases made from the business make a direct contribution to establishment and maintenance of the project.



## Accountants, Advisors & Planners

### Office Locations:

111 High Street, Woodend Ph: 03 5427 8000  
2/19 Bourke Street, Kilmore Ph: 03 5782 1273  
email: admin@riverwoodgroup.com.au  
website: www.riverwoodgroup.com.au

Riverwood Group can offer a *Total Financial Solutions* package for you and your family. Take a look at some of the services we provide:

### Taxation

All your taxation requirements to suit individuals and small businesses.

### Investments to Create & Protect your Wealth

Managed Funds, Indexed Funds, margin Lending and more

### Planning for Retirement

Allocated Pensions, Centrelink Benefits and Payments

### Stockbroking

Recommended lists, broking facility available, share updates

### Superannuation & Rollovers

Advice, placements, Self-Managed Super Funds and Eligible Termination Payment Advice

### Other Services

Home & Investment Loans, Business Loans and Leasing, Income Protection, Life Insurance, Professional Indemnity, Estate Planning and more.

# WOODEND MOWERS

## sales • service • hire • repairs

Try before you buy

**Chainsaws**

**Brush cutters**

**Ride-ons**

**Push mowers**

**Hedge trimmers**

**Cultivators**

**Blowers**

### Mowers for hire:

**\$95 per day — Ride On**

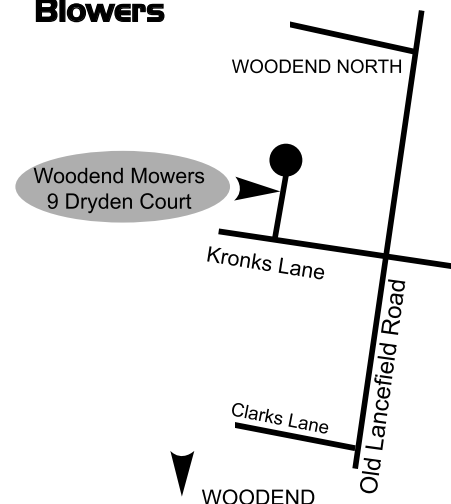
**\$35 per day — Push Mower**

**Delivery available**

**Open Monday To Friday 9am To 5.30pm**  
**Saturday 9am-4m**

**No. 5 Dryden Court North Woodend**

**Ph: 54 273 116**  
**Ah: 041 352 6761**



Stocking Australia's best brands



**Proudly supporting the Woodend Children's Community Garden**

## Pollyphonics News

It has been a wonderful year of singing so far, lately we've had our heads down and our tails up learning new repertoire.... you may have heard our brains working over time but it has all come beautifully together. *Moon River* is sounding very luscious indeed! We are enjoying the velvet tones of our soloist Joseph Bromley on *God Only Knows* and we love the rhythms in the South American song *Ky Choro ra*. Our repertoire continues to reflect many styles and beats from around the world.

Last year we sang as part of the Gorgeous Voices Festival in Bendigo. The 100 strong massed choir performance in the Cathedral was a spectacular. One of the songs was composed by Pollyphonics Choir member David Juriansz. Such talent in this choir!

The Pollyphonics are working towards a concert as part of the Kyneton Daffodil festival in September and we are also performing with the wonderful Resonance Orchestra on October 24th - the combination of a lush string orchestra and a 40 piece choir will be pretty sublime.

The Pollyphonics rehearse Thursday evenings in Woodend and are open to new members: Contact Polly: 0417 059 434 pollychristie@bigpond.com

## St Mary's Anglican Church

After eighteen months without a permanent Minister, the parishioners at St. Mary's are delighted that an appointment has been made to fill the vacancy of Rector of the Anglican Parish of Woodend. The Parish of Woodend encompasses St. Mary's Woodend, as well as St. Georges at Trentham and All Saints at Blackwood. The new Minister will be Fr. Malcolm Thomas, who is currently the Rector of the Parish of Glenelg, which embraces Coleraine, Casterton, Balmoral, Henty and Tahara in Victoria's western district.

Fr. Malcolm will be inducted into his new parish at a special service at St. Mary's on Thursday 29th July at 7:30 p.m., and his first regular service at Woodend will be on Sunday 1st August, at the usual time of 10:30 a.m. Everyone in the community is welcome at the induction service to welcome Fr. Malcolm, and of course at the weekly services on Sundays at 10:30 and Wednesdays at 10 a.m.

St. Mary's is now holding Sunday School for children every Sunday (with the exception of the first Sunday of each month, which is our family service). Sunday School is held in the lounge of the Rectory whilst the regular service takes place and is being ably led by local Mum and parishioner, Sarah Crome. The children enjoy special prayers, songs and activities, and return to participate in the last part of the Church service and share with the congregation the things they have talked about, which is usually quite delightful for all!

Also at St. Mary's is a small but keen group of singers and musicians. The group will be performing their favourite songs at St. Ambrose Church on Sunday 18th July between 8:30 and 9:30 a.m. as part of the Music Marathon Fundraiser in support of Jack and Sharon Simpson. Please come along to support the St. Mary's singers, and to support Sharon and Jack.

As our parish embarks on a new journey with Fr. Malcolm Thomas about to begin his time at Woodend, what better time to pop along to our Church and help us welcome him to our community? Everyone is welcome at St. Mary's, we would love to see you.

## Love Singing? Join the Pollyphonics Choir

Thursday's in Woodend  
[www.woodendweb.org/pollyphonics](http://www.woodendweb.org/pollyphonics)  
[pollychristie@bigpond.com](mailto:pollychristie@bigpond.com)  
MB: 0417 059 434

## Pamela Kell

**Remedial Massage Therapist, Level 1 Pilates Instructor**  
**SSNT/AAMT, Workcover accredited**  
Relaxation, Sports, Remedial Massage  
Manual and Lymphatic Drainage  
By Appointment  
22 Goode Street, Gisborne  
**5428 1000 0408 093 098**

Regular business card advertisements (90mm x 55mm) are \$41 inc GST per month - book & pay 11 months and get 10% off.

## CASTLEMAINE—GISBORNE CLEANING SERVICE

CHRISTINE ADAMS, FRYERS ROAD, ELPHINSTONE 3448

**Carpet Cleaning Specialists**  
**Duct Cleaning, Window Cleaning, etc.**  
**For all your cleaning requirements**  
- no job too big or too small -  
*obligation-free quotes*

Tel: 5473 3307 Fax: 5473 3310

**Mobile: 0419 006 591**



24 Seven Alarms Aust Pty Ltd

- Alarms installed, Serviced and Monitored
- Data cabling and phone line installation
- Medical Alert Systems
- Access Control Systems PSBL: 732-083-90s
- Digital Video Surveillance CCTV packages: domestic and commercial

1800 247 111/ 03 5427 4411  
[sales@24sevenalarms.com.au](mailto:sales@24sevenalarms.com.au)

## Woodend Neighbourhood Centre

Our winter term program is now out and on our web site, so please take the time to browse what we have on offer for you this term.

July is the start of the new financial year, so it is time for your tax returns. Once again we have a volunteer, trained by the Australian Taxation Office, who is here to help prepare your tax return. This free service is available to anyone on a low income. Ring to make an appointment.

Ian Petty, Barrister, Solicitor and Mediator offers free legal advice in all areas of law every Thursday at the Woodend Neighbourhood Centre between 11-12. No appointment necessary.

We have a wide range of after school activities this term with drama and acting, creative Daze, run by Saskia Post, art making with Beth and Spanish language with Nelly.

On the education front, we have Skills for getting that Job, a course designed to give you confidence to get back into the workforce, whether it be for the first time or re-entry. Certificate IV in Training & Assessment will be back again this term with Origin Training solutions, so if you have skills in any area and want to teach them to others this could be the stepping stone you need. Confidences building skills will be introduced by Joy. Painting on the Computer provides students with an insight to a variety of computer graphics programs. There are also QuickBooks and beginner computer classes available.

Languages have proved very popular so we now offer a range of classes in French, Spanish and Russian. We have a wide range of hobby classes, from quilting, patchwork, digital photography, understanding yourself through basic astrology with Rosie, meditation, jewellery making and Thai Cooking in our recently refurbished kitchen.

Our fitness classes continue to be popular, so whether it is yoga, Tai Chi, Qigong, Belly Dancing, walking or cycling, get moving now to be fit and trim for summer. The Life! Course will be running again for people at high risk of Type 2 Diabetes. Ask us for a free risk screen kit.

We are open five days a week and we offer internet access, photocopying and printing as well as regular courses during the day, on weekends and evenings across a broad spectrum of interests. We welcome new volunteers and tutors with knowledge to impart so come in and meet us at 47 Forest St, or call 5427 1845 or check our website [www.wnci.websyte.com.au](http://www.wnci.websyte.com.au) for further information about courses and classes.

Sarah Campbell Coordinator

# BGE

## Joinery Quality you deserve

- Kitchens • Shop fittings • Bars

### BRAD ELSE

Mob: 0412 355 548 Ph: 5422 2571  
Factory 2/27 Redesdale Rd., Kyneton

Visit our Showroom 166B Mollison St, Kyneton  
11am - 5pm Fridays or by appointment



## MOUNT MACEDON WINERY

—Your local Winery—

### Wine Tasting & Sales

open Saturday, Sunday & Public Holidays 11am - 5pm  
433 Bawden (Douglas) Road, Woodend / Mt Macedon  
[www.mountmacedonwinery.com.au](http://www.mountmacedonwinery.com.au)  
5427 2735

### ENJOY YOUR PRECIOUS WEEKENDS

## TERRY'S GROUND CREW MOWING & MAINTENANCE

### 0400 909 303

**MACEDON RANGES VOUCHERS ACCEPTED  
GET READY FOR SPRING AND SUMMER**

**SMALL ACREAGE SPECIALISTS**



**All news items, articles and community news columns must be received by 15th of each month.**

### The fencin' fella

- colorbond
- tubular
- timber
- steel picket
- pool

### Mini Earthmoving Kanga Loaders

Attachments include:  
rotary hoe, soil leveling bar,  
4 in 1 bucket, trenchers,  
post hole diggers, tipper

## SHAUN BARRON

MOB: 0407 232 900 or 5422 3488 AH



## FAIRHURST CONVEYANCING

and Secretarial Services

For all your

### Property Transfers

Ring Sue Fairhurst on

### 5427 2382

27 Urquhart Street, Woodend

MVCA & AIC

Licensee:  
A. (Sue) Fairhurst  
Licence No.:  
000316L

*Woodend's Own*

*2010 Early Harvest*

*extra virgin olive oil*

*Now available in High Street from  
Woodend Fruit Market and  
Glen's Country Meats*

**CAMPASPE  
BEND**

*a very special local olive oil  
grown on the red and  
grey soils by the  
big bend in the  
Campaspe River,  
Woodend, Victoria*



**"RELAX...  
YOU'RE AT BELLA."**

Macedon Ranges Business  
Excellence Awards  
Winner- Young Business Person Of  
The Year Emma Fleming  
Finalist - Apprentice Of The Year  
Christelle Dixon  
Finalist - Professional Service  
Bella The Cut & Colour Salon

We'd love to see you relaxing at  
Bella sometime soon.

Book on line [www.bellasalon.com.au](http://www.bellasalon.com.au)  
or phone 0354 273030

## Trivia night for Cambodian Kids

Come along to a amazing night of trivia fun! on 31st July tickets are \$15.00 pp, or \$150 for a table of ten!

Drinks are at bar prices, also plenty of fun mini games to play so bring along your gold coins and loose change.

live music as well as special guests TBA.

All money from door price, bar , raffles and games go directly to the Cambodian Kids Foundation and all of their wonderful projects.

Bring a couple of friends along and make it a fantastic night, please keep in mind that places are limited and is first in, best dressed. Please contact [iancooper@mmnet.com.au](mailto:iancooper@mmnet.com.au) for more info and to secure your place. Hope to see you all there CKF team Saturday 31st July 7.30- Start at St Ambrose Hall.

## Cambodian Kids Foundation

The Annual General Meeting for the Cambodian Kids Foundation will be held on the 9th July, at the Victoria Hotel, 7pm for 7.30 start. All welcome.

## Come and party

Are you hosting a children's party and having horror visions of leftover party pies in the carpet, sauce smeared on the walls and chocolate sprinkles in the linen cupboard? Is your monthly meeting too crowded for the dining room? Or does the venue you usually attend get too cold in winter?

The Woodend Tennis Club clubhouse is available to the public for hire. Suitable for seated groups of up to 80 and well over 100 for other functions, the hall has reverse cycle air-conditioning, and kitchen, bathroom and storage facilities. Hiring charge is \$25 per hour or \$15 for permanent bookings. For bookings and more details contact Nadine on 0439 399 838.

All news items, articles and community news columns must be received by 15th of each month.


**CHINKA STEEL CONVEYANCING  
(HEP Steel, Solicitor)**

**FOR ALL YOUR  
PROPERTY SALES AND PURCHASES**

**RING CHINKA ON  
03 5427 2477**

**74 HIGH STREET WOODEND 3442**

**STAIRS**



**DAVID GARRAHAN**

FOR MOST STAIRCASE REQUIREMENTS

**0408 153 124**

*Sara Jane Hammond*  
**Osteopath & Remedial Massage Therapist**

**37 EBDEN ST KYNETON  
BY APPOINTMENT ONLY**

**0430 002 672**  
[faeryjane@gmail.com](mailto:faeryjane@gmail.com)

Introducing a fabulous new range of stationery . . .



LANTERN STUDIOS



The perfect lux gift  
to yourself or  
someone special



**Collier Office**  
and Business Assist

Shop 5, 130 High Street Woodend

P: 5427 3209 E: print@collieroffice.com.au

### Brother MFC-255CW

4-in-1 Wireless Colour Injet Multi-Function Centre

**\$179**



**Wireless  
All-in One with Fax**

Ideal for Home and Small Offices

**WITH BONUS LABEL PRINTER**

valued at \$73



The PT-1290 is perfect for  
all your home office  
labeling applications

**Yours FREE!** with every MFC-255CW purchase

We stock all the major brands and  
offer **GREAT** prices on genuine  
ink and toner cartridges

## Robbins, Stilson & Molloy

After a sell-out Melbourne International Comedy Festival run Mick Molloy, Glenn Robbins and Jeff Stilson are taking their hilarious show on the road! After years of TV, film and radio appearances, the three comedians have gone back to their roots - standing behind a microphone in front of a roomful of punters. Three men, a microphone and 90 minutes of some of Australia's best comedy.

Logie nominated Glenn Robbins has been acting and writing in comedy for well over 20 years. When he takes the stage you'll see a new side of the man best known for his time on The Comedy Company, Fast Forward, The Panel, Kath and Kim and most recently Out of the Question on Channel 7. Hosting the evening, Robbins will introduce two very different stand-up acts.

The enigmatic Mick Molloy is one of Australia's most successful and well-known comedians, often wearing the writer, actor and producer hat as well. Having been part of Martin/Molloy, The Late Show, Crackerjack and most recently Channel 10's Before the Game Mick will engage the audience with his witty banter and topical dissection of news.

Joining the familiar Robbins and Molloy on stage is international sensation Jeff Stilson. Familiar to local audiences through his many appearances on The Panel, Stilson has been nominated for 14 Emmy Awards (winning two) for comedy writing and producing and his twenty year stand up career has included regular appearances on Letterman, Conan and Jay Leno. Stilson brings a dry US wit to the stage with his stories of family, life and living in Australia. When: Friday 30th July, 8pm Towh Hall, Kyneton. Tickets: \$39.90 full, \$34.90 concession, \$34.90 groups of 10+ or call 1300 88 88 02



**FIREBIRD MOTOR REPAIRS  
CAR WASH**

31 URQUHART STREET  
WOODEND 3442.

OPEN 7 DAYS  
Phone:(03) 5427 2255



**CONTINUING VETERINARY  
EXCELLENCE**

*Our commitment to you is to provide the highest  
quality veterinary services in medicine, surgery,  
health and wellbeing and preventative healthcare  
in a friendly, personalised & caring environment.*

*We care for all companion animals, equine, alpacas & livestock.*

**ANIMAL MANIPULATION**

24 Hour Emergency Care

**5427 4344**

12 Anslow Street Woodend

# MACEDON RANGES SELF STORAGE

- \* 7 day access
- \* Individual units
- \* Affordable prices
- \* Insurance available
- \* Now Fully Alarmed

Store your:

- \* Cars
- \* Boats
- \* Business documents
- \* Furniture etc.

Lot 3, Hoyle Court, Kyneton **5422 1898**  
(Off Beauchamp St) **5422 3488**

All news items, articles and community news columns must be received by 15th of each month.

## Want all the benefits of Gas? Trust a local!



Elgas is a local business, run by local people offering LPG for:

### Your Home

- Heating
- Hot Water
- Cooking
- Swap n Go

### Your Business

- Forklift
- Commercial
- Industrial

Safe, reliable tanker deliveries also available!



Woodend Produce  
31 Brooke Street  
Woodend VIC 3442

**5427 2753**

**131 161**

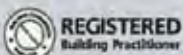
**ELGAS**

## Lachlan Fleming CONSTRUCTIONS Pt 1

SERVICING THE MACEDON RANGES

**0401 499 898**

**EXTENSIONS  
RENOVATIONS  
NEW HOMES**



## The Perfect Flip

We've all seen it done and we've all thought how easy it looks. But when you've entertained as many kids as I have with your attempts at pancake flipping, there comes a time when the howls of derisive laughter from your 5 year old have to stop for the sake of your own self-esteem. Pay attention now, because you are about to learn the secret of the perfect flip!

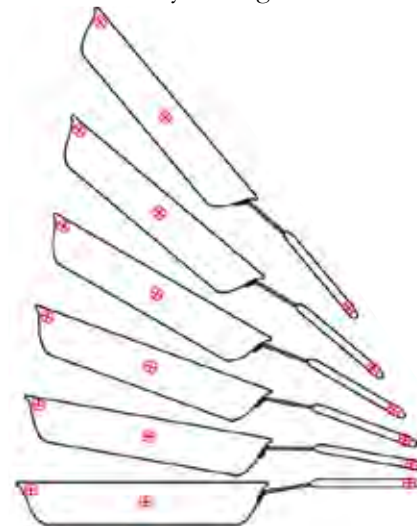
For the science-minded, the secret is simple: The centre of gravity of the pan and pancake combination is lifted vertically as seen in the accompanying diagram (central target). Simultaneously, the pan is rotated around said centre of gravity, so that the rear of the pan and handle (other red targets) follow cycloid paths of radius  $r_1$  and  $r_2$  respectively, where  $r_1$  is half the pan diameter and  $r_2 = r_1 + \text{handle length}$ .

This is done to:

1. Toss the pancake up, imparting to it, a short trajectory and;
2. Provide it with sufficient rotational momentum to complete precisely one half of a complete revolution.

For those less scientifically minded, pancake flipping is a bit like riding a bike – it takes a certain knack that words alone simply fail to convey. One must “get a feel” for the bike in order to learn how to ride it. To perform the perfect pancake flip, one must “get a feel” for the pan and the pancake within it.

So my tip here is: Go practise! Use a well-oiled pan and a slice of bread, soaked in water or milk if you prefer. Add salt and pepper to taste and position yourself at the stove for realism. Try tossing the simulated pancake while tilting the pan as described above.



Good luck!

Oh, if at first you don't succeed, try holding your tongue in one side of your mouth while doing this. If this still doesn't help, burn the application form for “MasterChef”.

Submitted by Greg Elliot



REGISTERED BUILDING PRACTITIONER (Est. 1992)

### SPECIALISING IN:

- Renovations & Specialist Carpentry Work
- Heritage Building
- Pergolas & Decks
- All General Home Maintenance
- Prompt & Reliable Service
- 10 years based in macedon ranges & surrounds

For a free estimate phone Darren – 0438 756 231/5427 2215

# Eating Out, In & Around Woodend

\* FAB FOOD  
\* FUNCTIONS & CATERING  
BY ARRANGEMENT  
Bookings Essential  
BYO wine only  
Light Snacks Mondays  
Free entry for  
Macedon Ranges residents

**Tel: 5427 0295**

Large range of Australian Gifts

**Hanging  
Rock  
Café &  
Country  
House**

## Not Just Fudge

126 High Street, Woodend

Home-made Fudge,  
Natural Ice Cream, Coffee, Tea, Herbal Tea, Milk &  
Thick Shakes, Cakes, Sandwiches,  
Freshly Squeezed Fruit & Vegetable Juices

Ph: 5427 2210

Fax: 5427 2880

Specialising in;  
Gluten Free Cakes  
Petite Fours (great for functions)  
Cakes for all occasions  
Wholesale cakes for Cafes & Restaurants

## Pie'ce De Resistance

Joe and John Tullio      [www.mrcakes.com.au](http://www.mrcakes.com.au)  
74 East Street Woodend      5427 3960

## HOLGATE'S BAR & RESTAURANT

Microbrewery Hotel with cosy  
open fires, stained glass windows  
and friendly atmosphere. Award  
winning local beer. Delicious  
meals including house-made bread, pasta and desserts.  
Function room and stylish accommodation now available.

Open for Lunch Tues-Sun. Open for Dinner 7 Days

79 High Street, Woodend

Ph 03 5427 2510



**The Village  
Larder**

Retro Comfort Food  
(and great coffee!)

Produced with Passion and Skill

Open 8am - 4pm Thu - Tue  
Closed Wednesdays

## Zarby's Wine bar & bistro

Open Wednesday -Saturday  
10am till late

84-88 High Street, Woodend P: 5427 4414

Space is still available  
in  
**The New Woodend  
Star.**

Great exposure at just  
\$45 per issue.

Call Alexia for further information 5427 3092

# Eating Out, In & Around Woodend

## What's hot at RedBeard?

### Red Hot Music:

Polly Christie and Andy Rigby

Saturday 24 July \$50 dinner + show; \$15 show only

Bookings essential: 5424 1354

A feast of sounds: exciting Latin harp rhythms, melancholy Celtic moods, stirring African themes, songs and vocal influences ranging from jazz to gospel. A sublime acoustic experience.



### Sourdough Baking Workshops now on Wednesdays too:

10am to 2pm on 21 Jul, 25 Aug, 8 Sep, 27 Oct, 24 Nov, or 8 Dec.

\$140 per person. Bookings essential: 5424 1354.

Includes lunch, bottomless coffee/tea and snacks. Take home the loaves you bake in our historic oven, our sourdough recipe and baking tips.

### Loaf of the month:

To an authentic sourdough (organic flour, water, wild leaven and sustainably harvested salt), we add organic linseeds, sunflower kernels and sesame seeds.

All RedBeard loaves bake in the deep and even heat of our huge 19th century woodfired Scotch oven.

Enjoy this marvellous multigrain loaf in sandwiches. See our website for retailers and farmers' markets.

### Stubble



### RedBeard Historic Bakery

Café open 7 days 8 am to 5 pm Old Bakery Lane, Trentham

[www.redbeardbakery.com.au](http://www.redbeardbakery.com.au)

## CAMPASPE HOUSE

A COUNTRY HOUSE HOTEL & RESTAURANT

"there is nothing pretentious in my cooking – just a humble and desperate search for perfection" introducing our new Head Chef - Steffen Jensen.

Mention this ad when booking & receive a complimentary glass of sparkling wine! Restaurant open for:

Breakfast - Saturday & Sunday 8am - 10am

Lunch - Saturday & Sunday 12pm - 2pm

Dinner - Thursday, Friday & Saturday 6.30pm - 8pm

Goldies Lane Woodend Telephone: 5427 2273

Email: [reservations@campaspehouse.com.au](mailto:reservations@campaspehouse.com.au) | Web: [www.campaspehouse.com.au](http://www.campaspehouse.com.au)

## New chef for Campaspe Country House

### Steffen Jensen places Woodend on the map as a gourmet food destination

A new chef at Campaspe Country House has cemented the region's reputation as an Australian gourmet hot spot.

Danish-born Steffen Jensen worked in both France and England before moving to Australia two years ago, where he was Head Chef at Fish Seafood Grill & Rotisserie at Docklands. This was followed by his position as Head Chef at Paringa Estate Winery, on the Mornington Peninsula.

Now, he is fast gaining a reputation as a force to be reckoned with in regional gastronomy, at the epitome of elegance that is Campaspe Country House. Steffen's modern interpretation of classic French cuisine not only showcases the best of the region, but is matched superbly with excellent regional wines.

His signature dish, trilogy of quail-grilled quail breast with bacon and shallot quiche, confit legs with pommes fondant, prosciutto & quail boudin with Pinot Noir jus is wowing diners with its superb flavours, and his chocolate delicie is an experience not to be missed.

Steffen is creating a complete gastronomic experience for guests in the restaurant at Campaspe Country House and we invite you to dine with us.



We deliver to your home the

**freshest, best quality, certified organic fruit & vegetables available** & guarantee this 100%

Pick from a range of pre-selected boxes or select your own order from our weekly availability list

Phone: 0409 386 875 or 5429 1156

email: [vivien@netcom.net.au](mailto:vivien@netcom.net.au)

[www.vivorganics.com.au](http://www.vivorganics.com.au)



## MOUNT MACEDON WINERY

Book now for

"cellar door with open fire, delicious home made soups and pizzas enjoy a glass of our wine with lunch."

open Saturday, Sunday & Public Holidays 11am - 5pm  
433 Bawden (Douglas) Road, Woodend / Mt Macedon  
[www.mountmacedonwinery.com.au](http://www.mountmacedonwinery.com.au)  
5427 2735



Frank & Rose Gorlitz

Open 7 Days  
8am till late

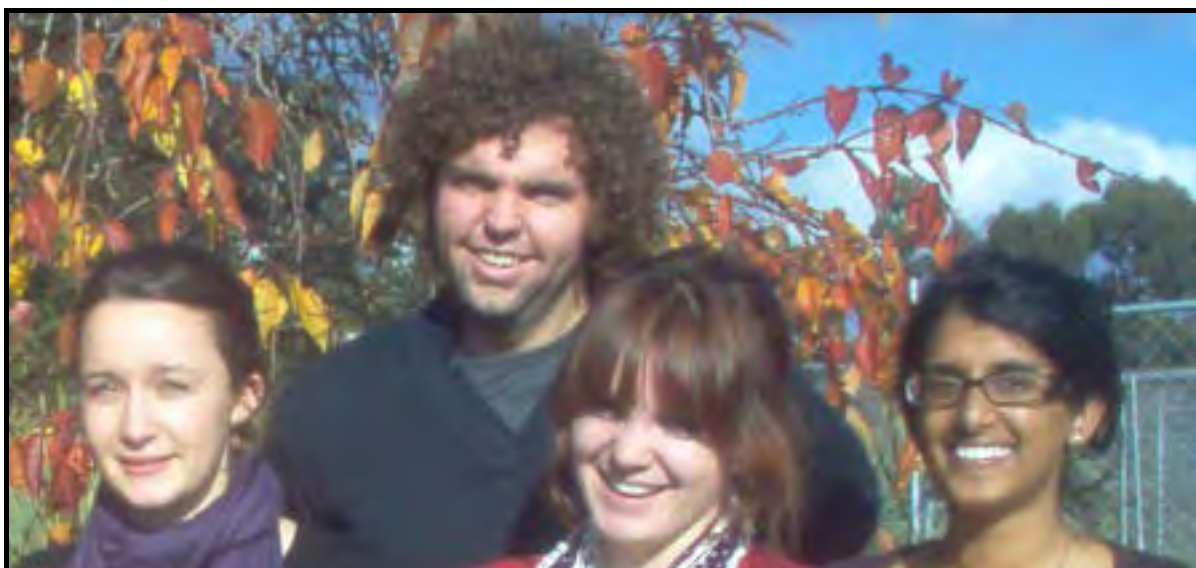
For Bookings breakfast, lunch & dinner

Ph/Fax 5427 4447

Mobile 0488 423 537

"Where Lovers of Food Eat"

## THE *B*ROOKE STREET MEDICAL CENTRE



Monash Students: Meg Creely, Charles Aitken (based at Gisborne), Danika Thiemt & Tamishta Hensman (left to right)

### **New Medical students for semester 2**

The Monash Medical students who trained here during the first half of the year have now finished their training at Brooke Street and are having a well earned rest. We will commence training with a new group of medical students for second semester from 12<sup>th</sup> July.

The experience has been overwhelmingly positive at the practice. A number of patients gave very positive feedback about their experience with the students. One patient rang the practice to say she had been sceptical to begin with but after having seen the student she was sold. We are interested in patient feedback – this can really help students identify areas they might improve on as well as knowing what they are doing well. Please give your feedback to practice staff.

### **Message to patients from students**

The Monash Medical students would like to extend their thanks to the entire Woodend Community for their support and encouragement over the last 4 months. We have enjoyed our time here immensely and are so grateful to have been given the opportunity to join your town. None of this would have been possible without the support from all of the patients at Brooke Street and we would like to thank each and every one of you.

*Danika Thiemt, Meg Creely, Tamishta Hensman*

### **Welcome to new GP Registrar**

Brooke Street welcomes Dr. Nayana Prematilaka. Nayana was born in Sri Lanka and has studied medicine in Russia and Australia. She comes to Woodend after working in a General Practice in Churchill, Victoria.

While Nayana has a range of interests in medicine, she has a special interest in palliative care. Please welcome her to the community.

### **Do you have a weight problem?**

There are many quick fix answers to obesity and overweight offered on the market today. Often, people yo-yo when trying these quick fixes – they lose a little, then gain more.

Safe and long term weight reduction can be managed under the care of a trained Dietitian and your GP.

Annie Barry, our Dietitian & Nutritionist can help with weight issues as well as irritable bowel syndrome, special needs diets, building muscle, food allergies, needs of pregnant women & breast feeding mums, children's & teenage nutrition issues, dietary needs for medical conditions, label reading and more.

For information about fees and to make an appointment call reception on 5427 1002

***Brooke St. Medical Centre – tel. (03) 5427 1002 (after hours: tel. 1300 55 75 12)***

## Landcare News

Our Annual General Meeting will be held on Saturday July 17th at the Woodend Neighbourhood House. Starting from 1.30pm with general business and our guest speaker starting at 3.00pm. The guest speaker is Rolf Schlagloth, who has been a koala liaison officer with the Australian Koala Foundation for more than a decade and established a Koala Plan of Management with the City of Ballarat.

The AKF is deeply concerned about the falling off in numbers of koalas in many places, for reasons that include destruction of habitat, lack of biodiversity, lack of connectivity of koala-safe areas, and urban development.



The latest koala counts in the Macedon Ranges Shire show numbers are declining here also. We hope to get some idea of what can be done from Rolf.

The Public is very welcome to attend this free event. All we ask is that you RSVP by July 13th so we can cater for afternoon tea.

At the AGM we will hold elections for the committee. Our numbers fell off a bit during this year due to retirement and health issues, so we really need another three or four people! Can you help, please?

Thanks to generous assistance from Cr Neil Manning, the Woodend Lions Club, and the Macedon Ranges Shire, Greg Wilson of AGDOM Agricultural Contractors has completed the main part of the major clearing work on the site between Pyke St and Bowen St. He will need to come back later in the year to do some grading, but the whole area is now level enough for Council contractors to keep it mowed/slashed.

This will save us poor old (well some of us are fairly old!) volunteers a tremendous amount of backbreaking

**ADVANCED EQUINE DENTISTRY**

Dr Shannon Lee BVSc

**0418 598 621**

**we come to YOU!**

Winner 2009 Macedon Ranges Business Excellence Awards for Young Business Person & Professional Services categories

Mobile services for Macedon Ranges

[www.advancedequinedentistry.com.au](http://www.advancedequinedentistry.com.au)

### After School Learning Programmes

**MATHEMATICS**

**ENGLISH**

Pre-School

Primary School

High School

*Think your child could do better at school, but not sure how to help?*

**OPENING SOON**

**A Learning Centre**

**Offering**

**Programmes with Following Features**

- ✓ **Australian school curriculum**
- ✓ **Mathematics skills and worded problems**
- ✓ **English comprehension, writing and language conventions**
- ✓ **Individualised study plans**
- ✓ **Centre attendance 50 mins. per week per each subject enrolled**
- ✓ **Daily homework (20 mins. approx.)**
- ✓ **4 students per staff**
- ✓ **Low monthly fees (\$110 per month per each subject enrolled)**

**FOR DETAILS WATCH THIS SPACE NEXT MONTH**

work. This area is going to look absolutely lovely within a short time as the plants continue to grow apace, and the grass becomes more even and weed-free. We may plant a few more grasses and shrubs, but otherwise the area is finished, except for ongoing maintenance.

We need help from everyone who can spare a little time and energy for our working bees. The Creek Working bee's are on the fourth Sunday of every month, contact me for details. The Quarry Rd group usually meets on a Thursday, but because Bert will be away for a few weeks, contact me for that as well.

Some of the volunteers occasionally ask why there are so many garden plants on the public land. Broom, gorse (both kinds), blackberries, viburnum, willows, elms, poplars, and Radiata pines are all weeds in relation to the community-owned areas that we all share. Some of these, big trees have been growing in the town for a hundred or more years, and if you've got them in your garden we're not going to come around and tell you to pull them out!

But we will suggest, quite firmly, that blackberries, gorse, broom, Viburnum tinus, forget-me-nots, pampas grass, cuttings of invasive species, and weeds such as oxalis, thistles, dandelions, and couch grass should be taken to the tip, and not dumped on the side of a road!

All these plants compete with our own indigenous plants, and should not be allowed to flourish to their detriment.

Submitted by Jo Clancy 5427 1909

# This page is proudly sponsored by the 19th HOLE SHOPPING CENTRE



## Upcoming Events & Meetings

### July

- 4 Fun Run for Dempsey.  
Gilbert Gordon Oval
- 9 Mario Lanza Story
- 9 Antique Jewellery Lecture, Newham Hall
- 10 RSL "Christmas in July" dinner
- 11 "Drama at Newham" Newham Hall
- 14 Johnny Cash Tribute Show
- 15 Business Bacisc Course by David Wilson
- 15 Vollyball Tournament for CKf
- 17 "All through the Night" fundraiser for Jack Simpson
- 17 Fox. Kyneton Town Hall
- 17 Woodend landcare AGM
- 25 Gisborne Singers, "A Serenade to Music"
- 27 "7 Ways to attract Clients to your Business" with Nerfnadette McClelland Gisborne
- 29 Fr Malcolm Welcomed to St Mary's
- 30 Robbins, Stilson & Malloy  
Kyneton Town Hall
- 31 Cambodian Kids Foundation Trivia Niight
- 31 Newham Community get together  
Newham Hall

### August

- 5 Woodend Red Cross AGM
- 24 Kyneton Daffodil Festival

Community groups are invited to submit their event dates to be included in this listing

### COMMUNITY GROUPS CONTACT DETAILS

- Alcoholics Anonymous Friday night, Cobaw Community Centre 0409 131 144
- Australian Breastfeeding Association, Heather 5427 2398
- Cobaw Thursday Walking Group 5427 3340
- Daylight Masonic Lodge, 5427 2480
- 1st Woodend Scout Group, 5427 4968, Jenny
- Friends of Macedon Ranges Library, Chris/Bill 5427 2469
- Garden Club 5422 6062 / 5427 3340
- Living Word Christian Church 5429 6327
- Historical Society, Courthouse, 5427 2523
- Macedon Ranges & District Motor Club, 10 Webb Cres, New Gisborne 1st Wednesday each month 8pm
- Macedon Ranges Animal Aid, Buffalo Sports Stadium, 5427 1752
- Macedon Ranges Bridge Club, 5427 4440
- Macedon Ranges Families of Children with Disabilities Support Group, 5427 3365
- Macedon Ranges Residents Assc. 5427 1481 or 5427 2651
- Macedon Ranges Communicators (ITC), 5427 2669
- Macedon Ranges Photographic Society, 1st Tues of month, Ron Mathews 5427 3284
- Probus, 5427 2003
- R.S.L., Anslow Street 5427 3122
- Red Cross, 5427 1260
- Rotary Club of Woodend, meetings weekly at Vic Hotel Thursdays 6.45pm, Kai 5427 1029
- St. Mary's Guild, 11am, 4th Wednesday of month
- St. Mary's Street Stall, 9-12 noon outside Woodend Newsagency (2nd Sat of the month)
- Woodend Landcare Group, Jo 5427 1909 or Doug 5427 0666, 3rd Tues Meeting, 4th Sunday Working Bee
- Woodend Angling Club, RSL Hall, 5427 2395
- Woodend Art Group, Railway Station, 5422 6172 or 5427 1659
- Woodend Business & Tourism Association, Cori 5427 3434, 2nd Tues of month (BATA)
- Woodend Hanging Rock Petanque Club, Hanging Rock Reserve Ph: 5427 2477
- Woodend Lions Club, Meetings 2nd/4th Wednesday each month, ph Robyn Roberts 5427 1342
- Woodend Model Railway Club, Buffalo Stadium
- Woodend Pony Club, 5427 2793
- Woodend Senior Citizens Club, Comm. Centre
- Woodend SES Training Nights, Urquhart St
- Woodend Winter Arts Festival Inc., Jacky 5427 1560

- Ian Marks Liquor*  
1300 627 575 ext 24 &34
- Blue Orange Concepts: homeware*  
5427 4500
- Woodend Pizza & Pasta*  
5427 3777
- Coles Supermarket*  
5427 2377
- Collier Office & Business Assist and Woodend Copy Centre*  
5427 3092
- Pets Haven*  
5427 3603
- Mitre-10 Woodend Hardware*  
5427 2314
- BP Woodend*  
5427 2248
- Target Country*  
5427 4366
- Macedon Ranges Travel Services*  
5427 4777
- Kosmac & Clemens: optometrists*  
5427 4577
- Woodend Cycles*  
5427 2662
- Salvation Army Family Store*  
5427 4421
- Loose Change Bargains*  
5427 4466
- Bodywise Underwear*  
1300 66 17 66
- Australia Post*  
5427 2600
- Inner Artist*  
5427 4455
- The Spa Beauty Therapy Centre*  
5427 3322
- HIGH STREET SHOPS**
- Color Me Cooper: clothing/gifts*  
5427 1454
- Chelleon For Hair*  
5427 3246
- Not Just Fudge*  
5427 2210
- RT Edgar Real Estate*  
5427 1222
- Woodend Bakery Cafe*  
5427 3434

PLEASE SEND US YOUR FUTURE DATES

# Tai Chi

Classes held in Woodend

*Relaxation, flexibility, balance*

Beginners Welcome

Enquiries and further information: 0407 349 497

Help us help you! Please EMAIL your ads and articles PRIOR to the 15th of the month to [sales@collieroffice.com.au](mailto:sales@collieroffice.com.au)

## Your Memories to DVD

- \* 8 mm/16 mm Films
- \* Compact VHS
- \* Mini DV
- \* VHS

Discount for Quantity



**Top Hat Productions**  
Ph: 5422 3930

# Keep baby warm from head to toe!

### What's new at Zappa-do!

We have new stocks of our fantastic hand-knitted pure wool hats and boots for babies. Plus cuddly Australian wool cot blankets and throws. Grobags in a range of sizes. Warm winter pyjamas. Long sleeved singlets. Tights and leggings. Wet day overpants. And lots more to keep baby warm this winter - from head to toe. So, come on in and see what else is new at Zappa-do.



**ZAPPA-do** *Baby and You!*

Shop 3, 87 High Street, Woodend. Ph: 5427 1270  
or visit our new website at: [www.zappado.com.au](http://www.zappado.com.au)

## My Cambodian Kids Foundation Experience

Hi my name is Veronica Zeinstra. I am currently 47 years young. I am a midwife; at the moment working at Sunshine Hospital I have three beautiful daughters and a wonderful husband, Fred. I would like to share a story with you.

I became involved with Cambodian Kids Foundation, through my daughter Bec, who was the fundraising co-ordinator. This should have given me great insight into what Cambodian Kids was all about. Well I was blind. A trip at the beginning of this year was to change my attitude and inspired me to help.

When we arrived in Cambodia, one of the students, Sokheng became our tour guide of Siem Reap. He was fantastic. He put in hours of study beforehand, gave us detailed information, translated for us and helped us to understand the Khmer history. All of this was during his own holiday break which is so short in Cambodia.

Then we travelled to Kampong Thom to meet Sokchea and Put Set two of the friendliest welcoming people I have ever met. I felt like I had just come home.

The ACE students and Donna had organised a detailed itinerary to explore the projects that CKF had established. I was blown away by how much had been achieved in such a short space of time. ACE is fantastic. The students and leaders there are dedicated to their studies and to developing leadership skills which they then use to help in their own communities, all with a big smile on their faces. Donna encouraged me to conduct a First Aid Course which I initially thought was beyond my skill capacity. Then I realised that I have so much knowledge to share and they soaked it all up and wanted more!!! Not only that, the skills they learnt were retained for a later escapade with Donna and a motorbike burn.

We had a tour of the village where the new school is now. Walking through the village was an eye opener for me. They have so little. They are so poor. Yet they smiled and welcomed us, I was given a beautiful baby to hold and I felt honoured. They invited us to stay for lunch, which I felt overwhelmed about. I knew they were hungry and had little to share but there was no hesitation to offer us lunch with them.

There are so many stories so many deserving people. Through sponsorship Cambodian Kids is helping their lives to change.

We visited Rudi Boa where Bec and the students from ACE painted a magnificent wall; even some of the children from the school came to help. Again they were full of smiles and just wanting to be with us. Songs were sung as the work was done, a beautiful experience. I also went into the class where the children practiced English with me, I was asked my age many times, so now I am very comfortable with how young I am!

To capture the feel of what this foundation is doing over in Cambodia needs in some ways to be experienced firsthand. You cannot comprehend the fantastic changes that it is enabling, for the people's lives they are touching. However if you see the light in the eyes of people who

*continued page 18*

volunteer for them, that is a reflection of what is going on over there. Cambodia is flourishing from the CKF projects.

I was so impressed by the work that I have decided to take my daughter, who is in year 10, to Cambodia later this year, so that she can experience and assist in the projects of CKF. CKF has set up Mission Cambodia which enables students, schools or any interested people, to visit and participate in their projects. Donna will be taking groups in September and November 2010, which still have spaces available. I love that CKF is about developing leaders from within the Cambodian community, and then those leaders are then spreading their knowledge to other Cambodians. It's like a stone thrown into the pond. The ripples will spread through Cambodia.

And to cap off an extraordinary experience, on our last night, the ACE students put together a Party for us. They spent their limited funds on a wonderful variety of fruits and entertained us with song and dance. It was very touching. They are the loveliest people.

So of course, I wanted then to be a part of this great organisation. And as I am in the health profession I decided to volunteer my services within in this area. I am now helping develop a project which will focus on health. It will involve Sponsorship of Doctors and Nurses, who will be involved in the health project. A mobile clinic. Health education for students, parents and children. A focus on women's and men's health, dental care and many more things. So if anyone has an interest in this area I would love to hear from you.

For other information on Cambodian Kids Foundation phone 0417 271 453

## Do you know how many chemicals you could be eating?

Do you know where, and more importantly, how your fruit and vegetables are grown?

All our fresh produce are Australian grown with no chemical sprays, artificial fertilisers or genetically modified materials,  
**just as nature intended.**

Nature's Garden Organic Produce is guaranteed Australian grown and 100% certified organic.

Call in and see our extensive 100% organic range at Shop 4A Collier St, Woodend (cnr Anslow St) or call 5427 4406  
[www.naturesgarden.com.au](http://www.naturesgarden.com.au)



**WOODEND  
NURSERY &  
GARDEN SUPPLIES**  
OPEN 7 DAYS  
"LOCAL KNOWLEDGE FOR LOCAL CONDITIONS"  
**36 URQUHART ST, WOODEND**  
**Tel: 5427 1866 Mobile: 0428 271 866**  
Full range of garden & landscape needs  
Rock, Soil, Sands, Sleepers  
Bobcat hire

## WARNER'S JEWELLERS

EST. 1912 ~ 4th Generation Jewellers

**Manufacturing Jewellers    Watch & Clock Repairs**  
**Jewellery Repairs            Valuations & Rethreading**

Beautiful selection of

**PANDORA™**  
Life has its moments ... make them all unforgettable

97 High Street, Woodend

5427 1573

## Scouts Emergency

If you saw and heard the screaming sirens, flashing blue and red lights and crowds of CFA, ambulance, police and SES emergency services personnel in attendance at the Woodend Scout Hall in Forest Street last Friday night you would be forgiven for thinking there was a major emergency in progress.

Gas leak? Fire in the Log Cabin? Car accident?

What was actually happening was the 1st Woodend Scout Group Mock Emergencies Night. Over 60 Cubs, Scouts and Venturers were treated to demonstrations and explanations of the CFA's fire engines and hoses, SES's "jaws of life" and rescue equipment, the Ambulance resuscitation equipment and Police radios and sirens.

The Venturers (15-18 year-old scouts) also ran bases imulating electrocution and burns for the Cubs and Scouts to practise their first aid on treating these injuries.

Later in the evening the Group witnessed the Investiture of Bronwyn Rumble as Joey Scout Leader, and the Group's very first Joey Scout, Caitlin. Sam de Groot was awarded the Grey Wolf, the highest award in Cub Scouts. Cub Scouts Sam and Patrick were then ceremoniously taken up to the Scout Section by hand made stretcher (in keeping with the evening's theme) to start their new journey with the Scout Troop. The ceremonies then concluded with a sausage sizzle for all parents and children.

Many thanks to Woodend's CFA, SES, Ambulance and Police for turning out on a dark, drizzly Friday night to provide such an exciting and informative evening for all who attended.

Contact Group Leader Jenny Johnson on 5427 4968 if you would like more information about Joey Scouts or any of the other Sections – Cubs, Scouts and Venturers.

# Meta Massage

SPORTS/REMEDIAL MASSAGE, SHIATSU, REIKI  
Raymond White

Telephone 0411 268 336  
for an appointment

18 years experience • Chronic and acute conditions  
Sports injuries • Rehab work



WILLIAM BAJZIK N.D.  
NATUROPATH  
**HOMEOPATH HERBALIST**  
BOWEN THERAPIST  
ATMS 5485

. IRIDOLOGY . ALLERGY TESTING .  
. ACUPUNCTURE POINT ANALYSIS .  
. HERBAL MEDICINES .

P: 5427 1666  
M: 0402 880 271

42 ANSLOW STREET  
WOODEND

## Civil litigation and Litigation Strategy

If you are unfortunate enough to be involved in civil litigation whether it be as a result of a business dealing, a partnership dispute, a contract dispute or a breach of an agreement, your first priority ought to be obtaining clear and effective communication from an experienced litigation lawyer about how much your legal costs will be if you pursue a certain course of conduct in the proceedings. Regardless of whether you are bringing a claim against another party, or defending a claim brought against you, only a fraction of your legal costs will be met by the other party in the event you are successful. You should ask your lawyer how much your out-of-pocket legal expenses will be, even in the event of a successful outcome for you. In many cases where the debt or dispute is of a small commercial value, it will be cost prohibitive to pursue the matter with great ferocity through the Courts. In some cases, there may be a principle or a vested interest involved, and it may be worth litigating well beyond the commercial value of the claim itself, but you need to ensure you are, with the assistance of your lawyer, in a position well-informed to make that deliberate decision.

Of course, if you are defending a claim through the Courts, you not only have to worry about the other party's legal costs which the Court will order against you with interest accruing on the debt from the issuing of the proceedings, but also your own legal costs. Given the time and expense of pursuing matters through the Courts, there is a weighty incentive to settle disputes in an out-of-court settlement. Offers of Compromise and Calderbank offers (offers of negotiated settlements in claims) can place the party bringing the claim under significant pressure to settle and result in party being responsible for their own costs

## Peter Baker & Associates Barristers & Solicitors

**Family Law**  
**Criminal law**  
**General & Commercial Litigation**



**Peter Baker**  
BSC & LLB (MONASH)

**Juliana Smith**  
BM GDLP & LLB (UNE)

**Fran Medina**  
BA LLB

By Appointment at: **27 Urquhart St. Woodend**  
Head Office: 389 Hargreaves St, Bendigo

[info@peterbakerlaw.com.au](mailto:info@peterbakerlaw.com.au)  
Ph: 5441 7300 Fax: 5442 4232

**FREE FIRST INTERVIEW\***

\*For advice only matters

following refusal of such an offer where the case ultimately settles for less.

Often early intervention is the key in avoiding unnecessary and escalating legal costs to your lawyer. In some cases, you can seek that the other party indemnify your costs. Seek legal assistance early. Cost your litigation options and make a considered and well informed decision about how much money you are prepared to spend litigating the dispute, where you are bringing a claim or defending it. Regardless of the issue involved, litigants often exit the Court system feeling that they have not had the opportunity to voice their case, as once a matter is before the Courts, the legal issues are in focus, and other non-legal matters become irrelevant to the proceedings. Tread carefully. Consider your options. Seek effective and clear advice as to the options involved. Then develop your litigation strategy in consultation with sound advice from your experienced litigation lawyer.

Fran M. Medina Associate, Peter Baker & Associates



**bodywise**  
UNDERWEAR

*comfort for women ... everyday*

**Bra not a good fit? Why not consider a comfortable wire-free option from Bodywise ... we care about your comfort.**



Sizes 10 to 28, cup sizes A to I  
(depending on style & brand).

**Order online, by phone or mail order.**  
7-day exchange policy.

**Shop 19, 130 High Street, Woodend 3442**  
(Next to the new Post Office)

**Appointments essential**

[www.bodywise.com.au](http://www.bodywise.com.au)  
**1300 66 17 66**



## RSL Report

Now that Anzac Day has passed us by, it's back to "nose to the grindstone" for our small band of volunteer workforce in keeping the Sub Branch looking like an RSL. Work is underway on the outdoor area and we are just waiting for the Shire to give us the nod, to start construction. There are a few smaller jobs to be done inside the Hall, which will be done as time and finances permit.

We have a couple of "sickies" to report. Betty Barned, our stalwart Appeals Officer and our Secretary, Margaret Russell have a few health issues to deal with at the moment and we wish them both a speedy recovery. Even though those two are down, the Auxiliary are still there and able to cater for forthcoming functions.

We have had an approach from a former resident of Woodend, who wishes to donate a reasonable amount of money, for the construction of a fitting monument for the Avenue of Honour, in memory of those soldiers whose names are allotted to each tree. Only 70 of the original 162 name plates have survived the ravages of time and these are in the custody of the RSL. More news on this at a later date.

The Celts & Cobbers perform every second Friday night, commencing at 7.30pm. A great night to be had! Don't forget our Friday night Dinner on July 10th. It is "Christmas in July"

I will be in Canada, so Reg Till will be looking after the "shop" while we're away. Take care.

Barry Meldrum, President Woodend RSL

## THE WATERBLOKE

Water Saving Solutions

### The Water Bloke Specialises in

- Rainwater Tank Installations,
- Tank To Toilet connections,
- Grey Water Recycling,
- Septic Systems
- Garden Reticulation.

We're based in Woodend, so call us for a free consultation and Water Audit of your home.

BEAT THE DROUGHT THIS SUMMER and Contact us at [www.thewaterbloke.com.au](http://www.thewaterbloke.com.au) or on [thewaterbloke@gmail.com](mailto:thewaterbloke@gmail.com)

Contact Craig (author of the best selling book "Every Last Drop: The Water Saving Guide) on 1300 650 947 or 0410 275 714



*"for all your water needs"*

## BUSINESS FOR SALE

due to impending retirement

### Eloise and Ken

LADIES AND MENS CLOTHING

Great business, good profits & simple to manage  
Trading 38 hours per week

96A High Street Woodend  
Phone Lesley 5427 4999

All news items, articles and community news columns must be received by 15th of each month.



## WOODEND & DISTRICT PODIATRY

### John F. Shapland

Resident Practitioner

Reg. Department Veteran's Affairs

**5427 2064**

Business and After Hours

1895 Mt. Macedon Rd., Woodend

## WOODEND SELF STORAGE (Vic) Pty Ltd



- Store your business documents, stocks or furniture
- 7 day access
- 33 individual sheds
- Affordable prices
- Insurance available

For any enquiries  
please contact

**Leonie or Dennis Barker**  
on **5427 4175**

## Braemar College Success

### Seventh Straight Orienteering title

Braemar College has reaffirmed its status as the top orienteering school in the state by winning the annual Victorian Secondary All Schools Orienteering Championships (VSSOC) for the seventh year in a row.

The College also won the Galway Shield with several of its students - Ned Lupson (Boys 13A), Cassie Cooke (Girls 15A), Lochie Brick (Boys 16A), Emily Hennessy (Girls 16A), Mary Fleming (Girls Open A), Lachlan Moffat (Boys 14B) and Lachlan Herriman (Boys Open B) – being crowned age champions.

The College achieved both these titles at the annual VSSOC which took place on Friday 21 May at The Tye Estate, near Romsey. Braemar College fielded a team of 100 students (boys and girls from Years 7-12) on the day,

The College has had an Orienteering Program in place



**Grantra**  
HOME IMPROVEMENTS  
Specialising in Bathroom Renovations  
PO Box 736, Woodend 3442  
**0418 175 877**  
www.grantrahomeimprovements.com.au  
Master Builder REGISTERED Building Practitioner



Four of Braemar College's orienteering age champs - (from left to right): Ned Lupson, Lochie Brick, Emily Hennessy and Cassie Cooke - start to plan their assault on the next orienteering event

for over 20 years and has been a member of Galway Orienteering since 2002. It currently offers its students a live orienteering program, through its Physical Education Department, and runs an annual house orienteering relay.

Four Braemar College students – Emily Hennessy, Year 10; Heath Jameison, Year 12; Mary Fleming, Year 12 and Lucy Fleming, Year 8 – are currently members of the State team that represents Victoria at orienteering.

At the annual Victorian Orienteering Championships, Braemar College enters three different events – Long Distance, Middle Distance and Sprints.

Its Orienteering Program has been run by Ms Mandy Hennessy, the College's Director of Exeat Week and Years 5-8 Activities, for the past 10 years. Ms Hennessy is well known in orienteering circles and has been heavily involved, having completed many orienteering courses over the past 30 years.

### Braemar College Jumps For Joy At Equestrian Results

Braemar College achieved excellent results at its annual Dressage and Show jumping Day held recently.

The College finished first in the Team Dressage – Genevieve Brand, Alex Edwards, Molly Price and Saxon Marvin – and the Team Show jumping – Hannah Newman, Sarah Thompson, Laura Breckon and Elke Smith – events.

Its 21 riders also achieved a number of individual firsts.

The College's Second Annual Dressage and Show jumping Day was held recently (23 May) at the Gisborne South-based I.R. Robertson Reserve.



The Braemar College team that won the Team Dressage are (from left to right): Genevieve Brand, Alex Edwards, Molly Price and Saxon Marvin.

# Bradley's

## Curtains + Blinds showroom now open

Mon to Fri 9 - 5.30 + Sat 10 - 1



t 5427 2361 fx 5427 1019 72 High Street, Woodend VIC 3442

www.bradleyscurtains.com

## Ashbourne Landcare Grant

Ashbourne Landcare is considering applying for a state-funded grant for landowners who have a frontage to the Campaspe River in Ashbourne. The grant would be to assist landowners to fence off the river from stock, remove gorse and other weeds, and plant natives. Landowners do not have to be members of the Landcare group. Anyone interested should contact Jane Holth 5427 1741 by 9th July. Interested landowners will have to provide an estimate of the length of the fence along the river bank, the amount of weedicide they would require and the number of trees they wish to plant. The grant is based on 50% contribution from the landowner.

### *Ashbourne Landcare....helping you care for your land*

Ashbourne Landcare Group welcomes residents in Ashbourne as members at any time. Since its inception in 1996 ALG has concentrated on helping landholders control gorse, a woody weed which is listed by Dept of Primary Industries as a noxious weed. It is a major threat to agricultural production and the natural environment and, under the Catchment and Land Protection Act 1994, landowners have the legal responsibility to control it.

Over the years ALG has received several grants towards helping members tackle their gorse, fence off the Campaspe river from stock and plant vegetation.

Through its newsletter ALG informs members about its current grant, occasional field days, courses and activities run by other Landcare Groups and government departments.

The group encourages landowners to undertake management practices which are environmentally sustainable and economically viable. For instance ALG has a 600Lt tank with pump available for hire by members to spray gorse, blackberry and broom.

The reserve on Ashbourne Road near the river is cared for by AGL with regular working sessions to burn off, weed and plant native vegetation.

The group also aims to encourage indigenous wildlife and vegetation. Surveys are undertaken to establish the range of existing fauna and flora and how we can assist them to flourish in Ashbourne.

If you would like more to know more about the Landcare Group please ring Jane Holth 5427 1741 or Geoff Mcleod 5427 1325. For information on weeds contact Macedon Ranges Shire Council 1300 656 577 or the local DPI Officer in Kyneton 5421 1700.

**Hollybush Cottage Management** ("HCM") provides a turnkey solution to convert, promote and manage unoccupied dwellings on your property to create an income-producing asset.

Macedon Ranges has a shortage of short-term holiday accommodation beds and needs more properties in the region to service growing demand.

If you own a building that could be suitable as a short-term rental property and want a new source of income please call Amanda on 0413-832549 or email [Amanda.emily@bigpond.com](mailto:Amanda.emily@bigpond.com). for your free 1st consultation. Website Lunching at the end of June 2010 [www.hollybush.com.au](http://www.hollybush.com.au)



## Christmas in July

At the **Woodend Community Centre**  
**Sunday 18<sup>th</sup> July - 6pm**  
**2 Course Roast Dinner**

Christmas Carols, Gifts & Family Fun

For Bookings ph 5429 6327

by Mon 12<sup>th</sup> July

Everyone welcome

Living Word Christian Church -  
Regular Sunday Service Times:  
10am Morning Service 7 Mitchell Court  
Romsey.  
6pm Evening Service Woodend  
Community Centre High St Woodend  
Mid-Week Life Groups: Children's Ministry,  
Women's Ministry & Men's Ministry  
**For more information:** Ph: 5429 6327  
Email: [livingword@iprimus.com.au](mailto:livingword@iprimus.com.au)



## Hollybush Cottage Management

Hollybush Cottage Management ("HCM") provides a turnkey solution to convert your unoccupied homes, cottages, studios and other forms of dwellings on your property into an income-producing asset with the potential to generate significantly greater returns than long-term tenant rentals.

Macedon Ranges has a chronic shortage of short-term holiday accommodation beds and needs more properties in the region to service growing demand.

HCM can manage it all for you and will tailor a solution to your particular circumstances and budget after an initial meeting. Services include the following:

- Support to establish and register a business;
- Design works (exterior and Interior);
- Liaison with Macedon Ranges Shire Council
- Building and renovation works;
- Procure and install fixtures, fittings, furniture, linen and utensils etc to make property 'Guest Ready';
- Websites set-up and other advertising and marketing;
- Guest management
- Management, maintenance and cleaning of property;

HCM's purpose is to help others create a similar successful business model and Amanda has already assisted a number of clients to do so with her husband Liam, a professional business consultant and a team of trades and creative people who are all local to the Macedon Ranges Shire.

If you own a building that could be suitable as a short-term rental property and want a new source of income please call Amanda on 0413 832 549

## Woodend Red Cross

The July meeting of The Woodend Red Cross Unit will be held on Thursday 1st July 1.30pm in the SES building.

The Annual Meeting will be held on August 5th. This change of arrangements is avoid holding the Annual during school holidays.

Submitted by: P Wilson & J. Podrazi

Scrapbooking **innerartist** Beading

**ART & CRAFT SUPPLIES**

**Present this ad for a 15% discount\*  
on stock not already discounted**  
(\*Minimum \$35.00 purchase for discount. June only)  
**Some Student and Professional stock  
already discounted up to 25%**  
**43 Anslow St. Woodend**  
**Visit [www.innerartist.com.au](http://www.innerartist.com.au)**

**Business for Sale. Enq. to owner 5427 4455**

## Equipment for Hire

The Rotary Club of Woodend offers the following equipment for hire.

- Soundart PA System \$250
- Data Projector and Screen set \$100
- Marquee \$50
- Chairs (4) and Tables (2) \$20

Rates are inclusive of 24 hour period.

Discounted options available for long term rates

A security deposit of \$400 is required.

Please contact Eb Friedrich 5427 1629 or Grant Hocking 5427 1578, for further information and terms and conditions

**Don't forget the Spring Liftout !  
Call Alexia for details 5427 3209**

## Woodend Playgroup News

The Woodend Playgroup is a self funded organisation that operates 5 days a week and has 3 sessions daily 9am-11am, 11am-1pm, 1pm-3pm. Each sessions has similar aged children in them. New members are always welcomes ,so if you have just moved to the area or become a new parent or are wanting to get out and about during the colder months, playgroup is a great place to meet other families. For enrolment enquires call 54272583

Woodend Playgroup has been established in Woodend for 30 years and we recently installed a Wooden Carved Sculpture of a Frog to celebrate this milestone. The kids are enjoying climbing and playing on it, so thank you to 2MH Consulting for your help to organise this.

### UP and Coming Fundraiser

The Woodend Playgroup presents Kidzbrandz Clothing Sale for one day only on Saturday 21st August 11am-3pm at The Playgroup Centre, Forest St Woodend.

Brands include Gap, Osh Kosh, Levis, Clavin Klein, Roxy, Quicksilver 10-75% off regular retail prices. A percentage of sales will go to the Woodend Playgroup

Submitted By Josie McLeish President

# Welcome to the Woodend Star Kids Club July Birthdays

2nd	Allea Ferguson.....	Turns 11
2nd	Sophie Marsh .....	Turns 12
6th	Charlotte Dinsdale.....	Turns 7
10th	Michaela Frantz.....	Turns 9
13th	Cody Merlo .....	Turns 5
116th	Connor Lever .....	Turns 10
22th	Kyra J Perry.....	Turns 11
26th	Benjamin Botwood.....	Turns 13
27th	Brady Muir.....	Turns 5
28th	Christopher Patmore.....	Turns 13
29th	Christian Adamcewicz .....	Turns 10
30th	Grace Cooper.....	Turns 7

## Happy Birthday Everyone!

### JOIN THE WOODEND STAR KIDS CLUB

Fill in your details below and place in the drop-boxes. Age limit is restricted to 13 years old. Must be resident of 3442 postcode.

Full name: \_\_\_\_\_

Address: \_\_\_\_\_

Date of Birth: \_\_\_\_\_ Age: \_\_\_\_\_

Phone: \_\_\_\_\_

Parent/Guardian

Signature: \_\_\_\_\_

**You can collect your birthday surprise by  
visiting Collier Office & Business Assist  
in the 19th Hole shopping centre**

Sponsored by:



**Collier Office  
and Business Assist**

Regular business card advertisements (90mm x 55mm) are \$45  
inc GST per month - book & pay 11 months  
and get 10% off.

· W · O · O · D · E · N · D ·

## SIMPLY HEALTH

### Introductory Offer:

- **Bowen Therapy - \$55**
- **Relaxation Massage - \$60**
- **1 Hour Facial - \$60**

**Ph: 5427 4237 or 0409 796 568**

# How do you want to find out what's planned in Your community?

When a new development or facility in your town is on the drawing board, how would you want to find out about it

Do you read the local newspapers or do you regularly log-on to Council's website?

Do you read your local community newsletter or Council's 'Update' newsletter?

When Council is considering a change to a service, such as the household garbage and recycling service, how do you want to have your say?

Would you prefer to attend a meeting to find out what's proposed and give your views or would you prefer to download the proposal and email your views? There are many options, just as there are many different issues Council consults on.

Take a look at the draft consultation framework that is on public exhibition now for your feedback. There is also a survey available. Log-on to [www.mrsc.vic.gov.au](http://www.mrsc.vic.gov.au) ('For Your Comment' section) or obtain a copy of the framework and the survey from any of Council's service centres at Romsey, Woodend, Gisborne or Kyneton.

If you would like a copy posted to you, please phone 5422 0302 Your comments are welcome until 18 July 2010 and should be forwarded to: Public Relations Officer, Macedon Ranges Shire Council, PO Box 151 Kyneton 3444 or email to [mrsc@mrsc.vic.gov.au](mailto:mrsc@mrsc.vic.gov.au)

## AGRICULTURAL CONTRACTOR



### PHILIP BEATTIE PTY LTD

Located in the Macedon Ranges and servicing a wide surrounding area, Philip Beattie Pty Ltd can provide you with the latest equipment and operators for you to produce the best in

- CROPPING
- SPREADING/FERTILISING
- PASTURE RENOVATIONS
- ZERO TILL RENOVATIONS

**Now with the added feature of an Outback GPS Guidance System to enable full and accurate mapping of your paddocks**

At Philip Beattie Pty Ltd we can also provide you with all your hay making requirements supplying

- Mowing
- Raking
- Teddering
- Large Square Bales
- Round Bales
- Small Square Bales
- Silage Wrapping

**Contact:**

**Philip Beattie Pty Ltd**  
**45 Millers Lane**  
**Newham Vic 3442**  
**Ph/Fax (03) 5427 0702 Mobile 0419 573 226**  
[psbeattie@bianpond.com](mailto:psbeattie@bianpond.com)

The New Woodend Star aims to provide a voice for Woodend residents, Community groups and Businesses. Editorial and publicity for community events is free, and all other contributions or business advertisements are most welcome.

## MASSAGE THERAPY

with **Natalie Taranto**

Reconnect and Restore the Flow Within

### NEW PREGNANCY MATTRESS!

*Enjoy your pregnancy  
 massage lying face down*



58 Urquhart St. Woodend  
 Call for an appointment  
**0402 534 983**

mobile massage also available

## Quality Blinds at factory direct prices

- Sunscreen/Blockout Blind
- Automated Blinds
- Exterior Awnings
- Latest Styles/Fabrics/Colours
- Roller/Roman Blinds/Venetians
- Professional Installation Team

Ring Now for a **Free** In House Consultation/Quotation

Mark 0437 759013

Simon 0458 338995

*Contemporary Blinds  
 Where Style is Affordable*

Save Your Wardrobe  
 Save Your Pocket  
 Save The World



42 Anslow St Woodend T 0431 734 897



**JULIE ANN WARD**  
 Visiting Hair & Beauty

*"Home service with a smile"*

9 Ashbourne Road  
 Woodend Vic. 3442  
 P: 5427 1538  
 M: 0423 676 415

# Kyneton Physiotherapy

ROBERT ROUSE

B. App. Sc. (Physio) Member A. Physio. Assoc.

## Move Well. Stay Well!

Registered for Comcare, TAC, W/Cover, Vet. Affairs  
NO REFERRAL NECESSARY

74 High St., (Corner New St.,) Kyneton

**20 years on High Street! 5422 2290**

## A Serenade to Music

The Gisborne Singers this year celebrate thirty years of music making in the Macedon Ranges.

To mark this anniversary, all music lovers, friends and associates of the choir are warmly invited to a special concert "A Serenade to Music" to be given on Sunday 25 July 2010 at the Church of the Resurrection, Macedon.

Started in 1980, with eight singers meeting in a private house in New Gisborne, the choir now has around thirty-five active members (aged from fifteen to eighty) who rehearse weekly at Holy Cross Primary School, New Gisborne.

The Gisborne Singers present three major concerts each year, mostly in the Macedon Ranges, in venues such as St. Ambrose and St. Mary's Churches, Woodend; St. Paul's Church, Kyneton; and the Uniting Church, Gisborne.

The choir's connection with The Church of the Resurrection, Macedon is particularly close. The Church of the Resurrection was built to replace two local churches lost in the Ash Wednesday fires, and was designed at least in part to host music performances. From its dedication



kitchen cook table home  
Blue Orange Concepts

## Take 20% off Turkish ceramics this July

Shop 2 130 High Street, Woodend 3442  
Telephone 03 5427 4500

in 1987 the "Church of the Res" was for many years the regular performing venue for the Gisborne Singers, so it is fitting that for this celebratory concert the choir comes "home".

It is also fitting that Barry Firth, the choir's inaugural musical director, returns as guest conductor. Barry has also chosen the program for this concert.

"I wanted to showcase the choir's capabilities," he said, "and also emphasise its connectedness with the local community. So I have chosen beautiful choral music by Vaughan Williams, Brahms, Copland and Percy Grainger. Some of which will be sung a capella. Also a choral medley of songs from "The Phantom of the Opera" which will be popular. Other pieces will be performed by Joseph Kinsela, a former Gisborne Singer, and the Quartet Conspiritus, a new string ensemble from the Macedon Ranges."

Tickets are \$30 adults/\$25 concession. For bookings and enquiries please contact Liz on 5426 2467 or [gisbornesingers@iprimus.com.au](mailto:gisbornesingers@iprimus.com.au) Tickets will be available at the door unless they are all presold.

## Woodend Senior Citizens

Activities: Tuesday Bingo (Win A Gift) 1.30pm. Friday Carpet Bowls 10.30am, Cards 1.30pm. General meeting and trading table Friday 2nd July 2010 at 11am. Followed by lunch (bring or buy own), then fun afternoon and cards at 1.30pm. Monthly Bus Trip: Titanic Artefact Exhibition at Melbourne Museum. Monday 12th July. Please book early as we need to notify the bus company what number of tickets are required. New members Welcome.


Submitted by A. Warnock President.

**All news items, articles and community news columns must be received by 15th of each month.**



**BUDA**  
Historic HOME & GARDEN

Wednesday - Saturday 12 to 5pm  
Sunday 10am to 5pm  
Groups by appointment  
T: 5472 1032  
E: [admin@budacastlemaine.org](mailto:admin@budacastlemaine.org)



**MACEDON RANGES BUSINESS CENTRE**

- Desk & hot soup lunch
- Tues & Thurs all winter
- \$8 for soup & hearty bread/rolls

## WINTER HOT SOUP LUNCHES

03 5460 8404 [www.mrbuscentre.com.au](http://www.mrbuscentre.com.au)

## FOR SALE "Chester"

14.2hh, 13yo. Great trail horse, fantastic in groups. Needs a competent rider. Good to s/c/f/w. Asking \$3,300 but negotiable to a good home. Winter rug included. Teeth, worming and feet up to date.

Call 0407 401 406 Inspection welcomed, Won't disappoint  
**Must** be a good home





## Woodend CFA Celebrates 114 Years

The Woodend Fire Brigade recently celebrated its 114th year with a very successful annual dinner. It was attended by nearly 100 people, including Woodend members and partners, guests Chris Eagle (Acting Operations Manager CFA Region 14), John Cutting (Operations Officer CFA District 2), members of other emergency services and senior members from neighbouring CFA brigades.

Highlights of the evening were the presentation of Service Awards:

- 5 Years to Ben Muir
- 10 Years to Phil Conway, Nicole Healey, Malcolm Judd, Phil Pringle and Mark Ryrych
- 15 Years to Steve Ritchie and Mick Bobic
- 30 years to Graham Muir and Dave Muir
- And an amazing 50 Years to Norm Bickerdyke
- With those 11 members alone that's a combined 195 years of volunteer service to our community.
- Member of Year Award to Mitch Hobbs for an outstanding individual contribution over the last 12

months, and the Captain's Award to Keith Beman for his driving skills and special use of mirrors.

Special Presentations were also made to the Woodend Bowling Club with the new Laurie Thomason Memorial Trophy for the annual bowls tournament with the CFA and Garry Dudderidge from Firebird Motors for his valuable support.

### *A Sincere Thank You To These Generous Macedon Ranges Businesses For Their Donations And Support*

Bites Deli, Blue Orange Concepts, Bodywise, Burkies Bakehouse, Café Colenso, Chelleon for Hair, Chubb, Coles, Collier Office and Business Assist, Colour Me Cooper, Dornau Group, Dow Chemical: Bunnings, E'Clips Hair & Beauty, Epigenetics, Excessories, Firebird Motors, Glenn's Country Meats, Hanging Rock Winery, Hardwick's Meats Kyneton, Holgates Brewhouse, Ian Marks Liquor, Inner Artist, Kerri's Bundle of Bears, Kosmac & Clemens, Macedon Ranges Florist, Macedon Views, Maloa House, Marlins on High, May 5 Gifts, Mt Macedon Winery, Nature's Garden, New Leaves Books, Not Just Fudge, Pet's Haven, Saving Grace, Shatzi's, Simply Health, Target, The Bakery, The Top Shop, The Village Larder, Victoria Hotel, Warners Jewellers, Woodend Bakery Café, Woodend Nursery, Woodend Pharmacy, Zappa-do, Zarby's and a special thankyou to Campasps House.

### *Beware Of The Hot Spots Around Your Home*

The CFA and MFB have an informative interactive website to highlight the 'hot spots' that should be checked in all houses. To download the Winter Fire Safety Checklist, please visit: [www.checkyourhotspots.com](http://www.checkyourhotspots.com)

• Home • Land • Motor Vehicles • Investments • Debt Consolidation



The  MORTGAGE GALLERY®

We are passionate about finding the right loan for you!



 MFAA  
ACCREDITED MORTGAGE CONSULTANT

**Have you got time to shop around?**

**With access to over 20 lenders, call Matt today for a FREE no obligation consultation to assist you in selecting the right product for you.**

**Matt Roulston**

**M: 0403 955 907**

**P: (03) 4433 1090**

**F: (03) 4433 1290**

Here you will find lots of useful information about appliances and places that will be found in nearly every home, and the dangers that they can present in winter. For example, candles, heaters, open fires, electric blankets, bedrooms, kitchen and laundry.

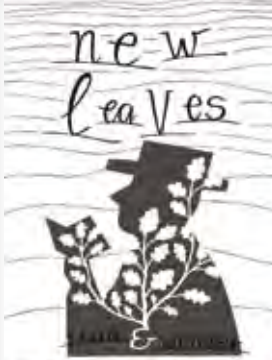
### **Dangers During Winter**

CFA statistics show that one-third of all house fires started in the kitchen, 20% were caused by heat from fuel fires and fuel-powered objects such as stoves and heaters, and another 20% from faulty or overloaded equipment.

Here are just a couple of other examples

- **Cooking Fires.** One of the main reasons that fires start in the kitchen is from cooking. Never leave cooking unattended, keep stoves free of grease and fat, hang tea towels away, and make sure exhaust fans are clean. Keep pot handles turned inwards so they can't be knocked over. Know how to use your fire blanket and fire extinguisher.
- **Electric Blankets.** A common cause of domestic fire. Check the blanket carefully for burn spots. Make sure they are flat on the bed and free of creases, as the wiring can be damaged. Turn on no more than 30 minutes before you go to bed. You should also never sleep with it on or leave it on during the day.
- **Clothes Dryers.** Items that haven't been washed properly and are placed in clothes driers can actually spontaneously combust due to the oils left in them reacting with high temperatures. Also make sure you regularly clean the lint filter.
- **Open Fire Place.** Always place a screen in front of an open fire. Put fires out before going to bed or going out.
- **Heaters.** Keep clothing, curtains and toys at least one metre from your heater. Always make sure there's an adult around when you use heaters.
- **Front Door.** Never deadlock yourself in your home. Deadlocks should have keys in them when you are home. Develop and practice your escape plan – have two ways to escape from your home.
- **Candles.** Keep away from curtains and windows. Don't put directly on wood or plastic. Use only when an adult is watching.
- **Powerboards.** Don't overload powerpoints. Only use one appliance for each outlet on a powerboard. Replace damaged power cords.

And above all else, make sure your smoke alarm is working.



**Keep warm by the fire through Winter with a great new title from New Leaves.**

**Woodend's beautiful bookshop has a full range of books, and offers an ordering service for any title not in stock.**

**Cnr Anslow & Collier Sts, Woodend  
5427 3772 Closed Monday**



**Design & Installation of  
Renewable Energy Systems**

- Grid connected domestic solar systems
- Stand-alone solar & wind generator power systems
- Farm & residential solar gate openers
- Solar bore, dam & tank pumps
- Garden & landscape lighting

**Tired of getting out of your car to open and close your gates?  
Automatic Solar Gate Openers**

**Single:\$1700 \***

**Double:\$1900 \***

**Why not open your gates from anywhere in  
Australia using your mobile phone?**

GSM wireless intercom / access control

**AC Model:\$900 \***

**DC Model:\$995 \***

\* Fully installed GST included, subject to site inspection

**Contact: Ray**

**Telephone: 5426 2574 Mobile: 0416 085 276**

**Email: raypaul.solarplus@gmail.com**

TITAB T08698 – BCSE P2026

### **Also Beware Of Black Ice**

There are more dangers in winter than those in and around our homes. Winter brings its own specific dangers to our region due to our climate, and black ice on our roads is one of the most severe.

We are called to every major road accident, and during the many cold mornings that occur through the winter and spring months we should be very alert to the dangers of black ice on our roads.

Over the next few months, it is not uncommon for us to be called out early in the morning, in the dark, to a serious car accident on Blackforest Drive, or other major roads, where a car had hit some black ice and then skidded out of control to crash into gum trees.

People can be very seriously injured and it can take several hours to clear the scene, thanks to the combined efforts of the paramedics, SES, police and CFA. The police helicopter is also often called to take an injured person to hospital.

It is clearly evident that we should all be extra careful when driving during our cold and wet periods.

For further information contact Captain Mick Christie on 0419 870 601 or 1st Lieutenant Mike Dornau on 0409 093 935, call the Woodend CFA on 5427 2356, visit the station in Urquhart Street or our website: [www.woodendcfa.org](http://www.woodendcfa.org).

The Woodend CFA is a volunteer emergency service, committed to Creating a Safer Community.

Submitted by 1st Lieutenant Mike Dornau, Woodend CFA

## Cancer and Natural Therapy Foundation

The Cancer and Natural Therapy Foundation, established in 1993, is a non-profit, registered charity organisation. Its aim is to self empower people through active participation by assisting them in acquiring knowledge and understanding of a wide range of natural therapies to enable them to make 'informed choices.' The Foundation endorses an integrative approach to health where both natural therapies and conventional treatments are equally respected according to individuals' choices.

The Foundation provides the following services and resources: information and referral, resource library, professional counselling, guest speaker program, support groups, reiki healing, ifas treatment, ear candling, quarterly newsletter, self help workshops and educational films.

### Health Awareness Support Group

Offering meditation, reiki healing and general discussion on natural therapies and preventative medicine. Tues 7.30-9.30pm.

### Self Empowerment and Healing Support Group

For "confidence building" and "positive living". Thurs 10-11.30am

### Film Nights & Health Workshops for July 2010

Workshops – Introduction to Spiritual Awareness and Healing. with Stavroula Armatas. Saturday 10 July, 10am-4pm. Cost \$65 or \$45 CNTF members. Wear Comfortable clothing and bring a lunch to share.

### Film Night – Documentary 'Food Inc' Hungry for Food

Tuesday 27 July, 7.30-9.30pm. Cost: \$10 or \$8 CNTF members. Refreshments included.

Held at Neighbourhood House and Community Centre, Elizabeth Drive, Sunbury. Phone: 9740 3977 (Mon/Wed/Fri) or Sandra on 0411 100 947

Website: <http://www.cancernaturaltherapyfoundation.org/>

## SOLAR DIRECT

- Solar Hot Water
- Grid Interactive Solar Systems
- Stand Alone Power Systems

Ph: 1300 55 77 98

Mobile: 0411 269 489

Lancefield



**KWIK KERB**  
CONTINUOUS CONCRETE EDGING  
BY TRENCHING MACHINE

Specialising in:  
CAR PARK KERBS • ASPHALT EDGING  
GARDEN EDGING • VARIOUS PROFILES  
REPAIR WORK

IAN  
0409 443 036

## Notes from Newham

### Inaugural Winter Lectures

Newham Mechanics Institute is sponsoring a series of winter lectures to honour the original focus of Mechanics Institutes. The second Lecture is on July 9th, Antique Jewellery with Roy Martin. Expert jeweller Roy Martin trained in Melbourne, then extensively in London, where he specialised in antique jewellery restoration. Roy's lectures involve active talk back from guests involving covering age, origin, quality and value of guest's pieces to be discussed broadly with all and also a range of pieces to be supplied by Roy to be handled and discussed. It is suggested that guests bring jewellery for him to discuss. Gold coin entry. 7pm for 7.30pm start, Contact Secretary 5427 0661 for details.

### One Act Plays

"Drama at Newham" Sunday 11th July 2010 2pm-4pm Doors open 1.30pm Mt Players & the Newham Mechanics Institute Are pleased to announce a matinee of two One Act plays *The Waifs, The Wake And The Whatnot*

Written by Eve Old, and directed by Frank Harvey & "Henna Nights" Written by Amy Rosenthal and directed by Julie Hopkins Entry for either is \$20 Mechanics Institute Hall, 1292 Rochford Road Newham. Each play approx 45mins (glass of wine/tea/coffee) included.

A big thanks to the Mount Macedon Players for putting us on their schedule of performing. for tickets contact Michael Quinn 5427 0120 & Newham Store.

### Community Get together

Don't forget the Community Planning Group BBQ evenings last Friday of month at Newham Hall, from 6pm BYO everything.



**Total  
Financial  
Solutions  
Australia**



*Helping you save  
for a*

*"Rainy Day"*

**Bob Nixon**

B.Com., Dip.Ed., Dip.A.I.I., Cert. IV Fin. Plng., FA.FA.

Authorised Representative,  
Total Financial Solutions Australia Pty Ltd  
ABN 58 003 636 968 AFSL No.246545.

Shop 10, 34a Hamilton Street. Gisborne Vic 3437

Ph: 03 5428 0123

Fax: 03 5420 7710

E: [bobnixon@netcon.net.au](mailto:bobnixon@netcon.net.au)

W: [www.bobnixon.com.au](http://www.bobnixon.com.au)

## Spotlight on Fairtrade

### What is Fairtrade?

Fairtrade is about better prices, decent working conditions, local sustainability and fair terms of trade for farmers and workers in the developing world.

Fairtrade is an alternative model of international trade which aims to share the benefits of trade more equitably between consumers, producers and the environment

Fairtrade guarantees a better deal for producers in the developing world through:

- A fair and stable price for their product;
- Long term trading relations and advance payments
- Investment in local community development
- Support in gaining knowledge and skills needed to operate in the global economy
- Environmentally sustainable farming methods.

### How do I know if a product is Fairtrade?

The Fairtrade Label is an independent consumer label which appears on products as a guarantee that producers are getting a better deal. For a product to display the Fairtrade Label it must meet the international Fairtrade standards. These standards are set by the certification body Fairtrade Labelling Organisations International (FLO) and have been developed in consultation with farmer, consumer and industry representatives.

### Look for this logo!

3Fish is a proud Fairtrade licensee, and thrilled to be the fastest growing fairtrade clothing company in Australia. We do design and pattern making for our ranges here in Australia, and grow, spin and dye our cotton, and manufacture our garments in India. You can buy 3Fish Fairtrade, Organic Carbon Neutral wardrobe basics from Benchmark Collective in Woodend, Twigs on High in Trentham and No. 2 Sweetheart in Kyneton.



It is our responsibility at the other side of the world to embrace the true cost of the production of products, and create a consistent and ongoing market for them. Whenever possible we must choose Fairtrade and look critically at the cost of our goods and stop to consider how it can be that a particular product can be bought at a particular price. In this way we use the same market forces that gave rise to “conventional” cotton to drive growth in a more positive and ethically fair manner

Marty and Natalie Dillon are directors of 3fish, and Marty regularly spends time working in India.

## Tell us the story about your favourite piece of fabric

Inspired by the signature quilt at the Kyneton Museum that was created last century, artist Tamara Marwood is seeking donations from the community of fabrics from their own life story.

Tamara will patchwork your donated fabrics in her own stylized way and the items will be on display at the Museum during the 2010 Daffodil Festival later this year.

To be part of this project you need to submit your fabric, your name and contact details, plus up to 200 words telling us about the story of your fabric. Items can be dropped off at the Kyneton Museum during opening hours (Friday, Saturday, Sunday: 11am-4pm) or sent to Kyneton Museum, PO Box 151, Kyneton 3444 by Friday, 23 July 2010.

Your fabric might be a piece of your lucky socks or the dress you wore to your first dance. Each story will be displayed along with the patchwork so visitors to the Museum can find out what your fabric means to you. For further information, contact Robyn Till on 5422 0319 or Tamara Marwood on 0428 304 544.



## DESIGNER AND MAKER OF FINE FURNITURE AND JOINERY

“Third generation woodwork really shows”



Zumstein Pty Ltd  
Factory 1/32 Brooke Street  
WOODEND VIC 3442  
Ph 03 5427 4579  
Fax 03 5427 2284  
Mobile 0412 138 364

**Sand | Soil | Mulch | Pots | Pavers | Plants**  
**Water features | Fire wood | Wine barrels**  
**Hire Equipment | Synthetic turf | Sleepers**

**NURSERY ROAD**  
GARDEN SUPPLIES

42 Nursery Road Macedon 3440 Victoria  
Email hello@nrgsupplies.com.au  
Telephone 03 5426 2400 | Facsimile 03 5426 4972

General open hours Monday-Friday 7.30-5pm,  
Saturday-Sunday 9-5pm. Arrangements outside  
these hours can be made.

Regular business card advertisements (90mm x 55mm) are \$45 inc GST per month - book & pay 11 months and get 10% off.

# Heritage Society News

Last month we included an extract from a letter which appeared in The Woodend Star on the 16th Feb. 1916. Under the heading of "Letter from London" it demonstrated some of the prevailing concerns and values of those war torn years in the country which for so many Australians, was still felt to be "home." Here is another extract from this letter:

*"What is London doing this Christmas season"? I can fancy some of my friends overseas asking. How does it differ from London at ordinary times? Has the tragedy of the war minimized all life, brightness and gaiety? The great feature of the moment is the innumerable charitable entertainments for all kinds of war purposes. There are concerts for the Italians, concerts for the Russians, concerts for the French. London takes upon itself as much as it can, the burden of philanthropy for the Allies. If you go into any of the stores in the West End you will find that the biggest crowd is around the counter where orders are taken for parcels of provisions for soldiers at the front and for prisoners of war."*

Back in Woodend, although a long way from the war zone, the needs of the soldiers still in the midst of horrendous fighting, and of the people, whose countries had been occupied, were not forgotten. Fund raising was co-ordinated under the Woodend Belgian Relief and Soldiers Fund and the local branch of the Red Cross with many people committing themselves to regular weekly donations. By 1917, some of the Australian wounded had already been returned to Australia when it was obvious that the severity of their condition required more than short spell in 'Blighty.' In November that year Woodend played host to a group of seventy of these returned soldiers from the Base Hospital in St. Kilda Road. They were brought up in "15 or 16 motor cars" kindly provided by The Victorian Volunteer Motor Service. The Woodend Star reported that "the lads were a fine lot of particularly well conducted chaps, or more or less convalescent from wounds and injuries sustained while fighting in France." Entertainment was provided in the Mechanics Institute and the catering was so generous that at the conclusion of the day they were able to send large supplies away with the cars for the benefit of the military hospital in town. It was quite a day, due to the unexpected early arrival of the cars – but everyone coped, and 'the lads' were most appreciative.

On quite a different topic, we recently received a note from one of our members, Edith Hill (nee Maxted) who now lives in Sydney. Edith was wondering if a small wooden statue of a Chinese man which she remembered from her Woodend days, had survived the ravages of time. Well, he has! In fact Heritage Society members will be able to see a photograph of him in their next "Heritage News." (Given the recent spate of senseless vandalism, we won't divulge his whereabouts here, but if you are curious, call us at the Centre on a Wednesday for details). Edith wondered if he was in some way connected with the Chinese gardens which flourished in the town well into the first decades of the last century. If you know anything about this statue, who carved it and why, we would be most interested to hear from you. If you can help, a ring to the Centre on a Wednesday (54 2723361) will be appreciated. Alternatively, call in, and we will show you his photograph!

Submitted by Janet Hawkins.

## TRADE & SERVICE DIRECTORY

### AIR CONDITIONING

## SPLIT SYSTEMS INSTALLATION AND SALES

Efficient heating & cooling  
For free quote, phone Dave  
DW Air 0407 248 454

### DRESSMAKER

## Beryl's Tailoring



DRESSMAKING, ALTERATIONS,  
BRIDAL, EVENING & DAY WEAR,  
LADIES AND MEN'S REPAIRS

Beryl Bachelor  
QUALIFIED DRESSMAKER, NEWHAM

BY APPOINTMENT ONLY  
MON TO FRI 9 – 5

5427 0568 0418 510 179

### EXCAVATIONS

## Cheap'n'Neat Excavations

Bobcat/Excavator/12m Tipper hlre

Post hole digger

Rubbish removal

Free Quotes

Contact Les 0418 556 634

### FIREWOOD

## O'Callaghan Bros

REDGUM FIREWOOD SUPPLIERS

## SPLIT RED GUM FIREWOOD

Excellent Quality Delivered Dirt Free  
Ph 7 days

0407 036 800 0429 957 091

### HANDYMAN

## Rowdy's Handyman Services

Home & Garden Maintenance

No Job Too Small!

- Carpentry,
- Plastering,
- Tiling
- Painting



P 5427 0072

M 0416 274 732

### PSYCHOLOGIST

## Sam Luxemburg

Registered Psychologist

- Personal Counselling in Woodend & Romsey (Medicare rebate available)
- Counselling Training
- Myers-Briggs personality testing

Phone: 0428 270 401

www.luxcollege.com.au

### HOME MAINTENANCE

Home maintenance & landscaping

service including decking,  
pergolas, carpentry & painting.

Stuart 0409 150 629

AH 5427 2465

### SPACE AVAILABLE

Space is still available  
in the Trades Section.

Great exposure at just  
\$30 per issue.

Call Alexia for further information 5427 3092

# TRADE & SERVICE DIRECTORY

## ANIMAL CARE



*An alternative to kennels & catteries*  
A reliable home care service for pets & farm animals, servicing the Macedon Ranges since 2003  
Phone Judy on 5427 1352

## BUILDER

**Mark McCartney**  
Balame Nominees Pty Ltd

Period & Modern Construction  
Kitchens, Bathrooms, Renovations, Decks, Pergolas, Home Maintenance, Complete Project Management

Phone: 0411 555 925  
E-mail: balame1@optusnet.com.au

## COUNSELLING

**Keryn Allan**  
Dip. Prof. Couns. COUNSELLOR

Grief & Loss  
Stress, anxiety & depression  
Anger management  
Workplace issues  
Behavioural problems  
Relationship issues

Phone: 0417 011 300  
Email: k.allan@optusnet.com.au

## ELECTRICIAN

**Minorlink**  
Electrical Contracting

Servicing the Macedon Ranges and Beyond

Greg Simpson  
Ph: 0407 332 413

## ELECTRICIAN

**Macedon Ranges Electrics**  
REC 17836

VISA 5422 2182

Spilt System Air Conditioning  
Television/Data/Antenna  
All Electrical Installations  
Contact Dan McCarthy 041754 2235  
31 Redesdale Rd Kyneton

## ELECTRICIAN

**BROWN electrical services**  
REC 17439

All types of electrical work  
Kyneton, Woodend & surrounding districts  
"no job too big or small"

Travis Brown 0400 035 442  
P: 5422 2568 F: 5422 6908

## GARDEN MAINTENANCE

**RE-VALUE GARDEN CARE & ASSOCIATED TASKS**

Phone Stuart  
0409 131 144

## GARDEN MAINTENANCE

*Garden Restoration & Maintenance.*

Excellent rate and outstanding work ethic  
Creative flair

Call Damian 0407 697 333

## GARDEN MAINTENANCE

**ABLE GARDEN MAINTENANCE**

Weeding Mowing  
Shrub/Rose/Fruit tree pruning  
Reasonable rates, fully insured  
P: 5427 4543 0407 317 491

## METAL GATES

**BVM Metalcraft**  
SPECIALIZING IN OLD WORLD AND MODERN STYLE GATES

STEEL BALUSTRATING INCLUDING STAINLESS STEEL ROPE AND WROUGHT IRON, PUNCHED RAIL FENCING  
ALL MATERIALS USED ARE GALVANIZED OR ZINC PLATED  
FINISHED IN YOUR CHOICE OF POWDERCOAT OUR DESIGN OR YOURS  
METAL POLISHING - ALLOYS, BRASS, STAINLESS STEEL  
CONTACT BEN 0422 288 768 FOR A FREE QUOTE

## PAINTING

**BD CROSBIE PAINTING**  
Ben T: 5427 2164  
M: 0431 205 576

Household & Commercial  
Interiors & Exteriors  
Painting, Staining & Oiling  
Decking, Stairs & Hand Rails  
Free Quotes

## PAINTING

**GEE'S Painting etc.**

Call Steven  
0402 079 482

## STONELAYING & PAVING

**DUNN** Stonemason & Paver  
specialising in

- Retaining Walls
- Drystone Walls
- Stone Houses
- Paving
- Over 20 years' experience

Cameron Dunn  
Ph (03) 5427 4778 Mob 0429 162 589

## TREE SERVICES

**A&P Tree Services**

- tree pruning / removal • stump removal
- tree planting / transplanting • rope & harness climbing
- confined space removal • fully insured

Professional commercial & residential tree maintenance all work carried out by qualified arborist

Call Anthony 0417 059 969

## WRITING SERVICES

a few good WORDS

Editorials, Publicity, Advertising, Proof-reading, Letters.

Nadine Hartnett  
Freelance Writer 0439 399 838  
nhartnet@bigpond.net.au

# SPORTS NEWS

## Cricket celebrates 150 years in Woodend

The planning for the 150th year of cricket in Woodend is well under way, with the committee led by Ronan Hume keen to get all cricketers from juniors, seniors and underage players to register their interest in playing for the 2010-11 season. Members from 2009-10 can do this via the MyCricket website and adjust any changes electronically.

A registration day will be held in central Woodend during late August for all of those wishing to fill out a registration form prior to the season beginning. Last season we fielded 3 U12 sides, 1 U14 and 2 U16, with a coach and manager for each team. We are keen to register teams early and would like players to register as soon as possible.

A girl's squad /team will be training and hopefully playing games this season as interest from Gisborne, Sunbury and Ballarat is strong to have a female only competition. So girls, please register your interest early and follow in the footsteps of Clea Smith, a Woodend player who represented Australia at the Twenty/20 World Cup, which the Australian women won!

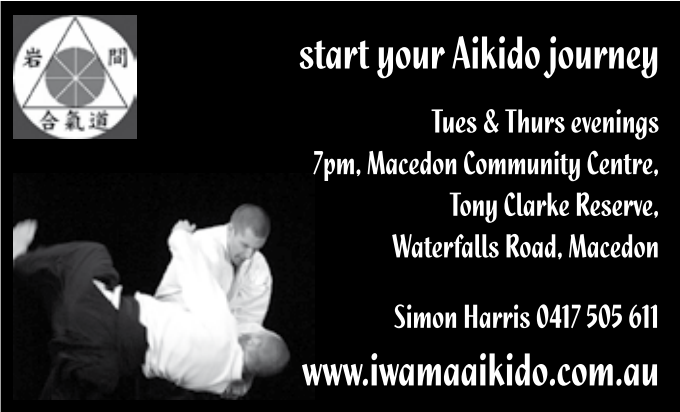
This coming season we are now requesting interested people to submit an expression of interest to coach or manage a junior team to Jamie Walker, Junior Co-ordinator at: Email walkdale@bigpond.com or WCC PO Box 326, Woodend, 3442.

The WCC has set the closing date for applications for junior coaching and managing positions at 20th July 2010, all applicants must be eligible to successfully complete a Working with Children's Check.

Any past or present players of the WCC are invited to contact the committee to lend support for the celebrations and the upcoming playing season. Please contact John Mackintosh via email on mackintosh.john.m@edumail.vic.gov.au or Ronan Hume ronan.hume@accenture.com .

## Volleyball Registration

Registration for this season will be taken on Thursday 15th July: from 7.00pm – 9.00pm at Buffalo Sports Stadium.



**start your Aikido journey**

Tues & Thurs evenings  
7pm, Macedon Community Centre,  
Tony Clarke Reserve,  
Waterfalls Road, Macedon

Simon Harris 0417 505 611  
[www.iwamaaikido.com.au](http://www.iwamaaikido.com.au)

## Squash still going strong

Macedon Ranges Squash keeps going from strength to strength with recent finals in the current squash competitions. With over 40 players now in competitions, the club caters for all levels from beginners to experienced players.

The club also recently held the finals of its graded club championships with A, B C and D grades. This gave the opportunity for new players to add their names to club honour boards and the history of the club. Macedon Ranges Squash Club recently installed a new honour board in Romsey so that club office bearers and club champions can be recognised by current and future members of the club. Club President Scott Murphy said "while the club originated in Kyneton, it now has roots in both Romsey and Kyneton and is proud to display these honour boards."

The club still has space available in its upcoming competitions and is happy to assess new players at any time so that they can be used to fill in during any season. Any old squashies or people interested in giving squash give Bill Hutcheson a call on 0488 348 898 to arrange a free hit of squash. New members continue to comment on the social atmosphere of the club as we are licenced and provide a light supper on each night of competition

## One game wins a premiership flag

Woodend Tennis Club's Section 3 Midweek ladies team brought home a premiership after clinching their grand final by one game. Congratulations to Karen Gordon, Karen O'Sullivan, Virginia Frith, Shelly Giddings and Sandra Bowman

The club welcomes players of all levels for competition and social tennis. New committee members are also sought and anyone interested in helping the club grow is invited to the annual meeting at the clubhouse (behind the community hub) on July 13.

Tuesday morning tennis is sociable and caters for hit and gigglers as well as the more adept. Matches start at 10am and are played across the Macedon Ranges and Sunbury. A highlight for many is the luncheon following play.

Open competitions are held on Thursday night and Saturday afternoon (mixed). The next night season will start this month.

## Woodend Tennis Club Join Up! Join Up!

Anyone Interested In Becoming A Permanent Or Emergency Player Can Ring One Of The Club's Competition Coordinators Below:

Tuesday Morning Ladies – Kellie Duff 0419 535 062  
Email: dktduff@hotmail.Com

Thursday Night Open – Paul Holgate 5427 2510 (Bh)  
paulh@holgatebrewhouse.com

Saturday Morning Juniors – Murray Fraser 0408 560 533  
mfr60244@bigpond.net.au

Saturday Afternoon Open – Nadine Hartnett 0439399838  
nhartnet@bigpond.net.au