

THE NEW WOODEND STAR



Circulation of 3190 throughout
Woodend postal district, Newham, Heskett, Ashbourne,
North Woodend, Hanging Rock, Carlsruhe, Cobaw.

AN INITIATIVE OF THE ROTARY CLUB OF WOODEND

May 2010

A Monthly Community Periodical

First Publication 1997

Volume Fourteen No.4

Tylden Primary School Annual Country Fair & Vintage Tractor Pull

Tylden Primary School, Clowes Street Tylden

The Annual Tylden Primary School Fair and Vintage Tractor Pull is on again, with loads of activities to be enjoyed by the whole family- A fun filled day with loads of stalls laden with food and bargains, rides for the kids and the Vintage tractor Pull that's always a highlight! The fair takes place on Saturday the 8th May from 10.00am and finishing at 3.00 pm.

Stalls will be selling plants, fresh local produce, scrumptious cakes and great coffee, there will also be a fabulous Silent Auction with a fantastic range of goods.

And it wouldn't be a true Country Fair if the Vintage Tractors were not on show displaying their great gusto of strength. This event, now in its 12th year, it is definitely a must see.



With nine classes to be won, these pre 1955 Vintage Tractors will give it their all by dragging a sled along a designated 100 metre track. It's fabulous to see so many of these grand machines maintained to their former glory days. If it's Classic cars you're into, you're in luck, with anyone owning a Classic invited to bring it along and show it off whilst enjoying a fabulous autumn day out.

Kids will be thrilled with the wide range of activities this year, with a Giant Slide, Probungee Trampolines, Bungee run, Adventure Jumping Castles, Petrol Powered Jeeps, and trackless trains.

The Fair and Vintage Tractor Pull is the main fundraiser for the school. Wrist Bands will be on sale (prior to 8th May only) at \$25 per band giving endless rides on the Probungee Trampolines, Adventure Jumping Castles, Petrol Powered Jeeps and Trackless Train. The Bands can be pre-purchased from the school and collected on the day. For enquiries about the Country Fair or purchase of Wrist Bands, please call the school on 5424 8244, concerning the Vintage Tractor Pull please contact Ross on (0428) 176 996 or regarding the Classic Cars, call Craig on 5424 8227.

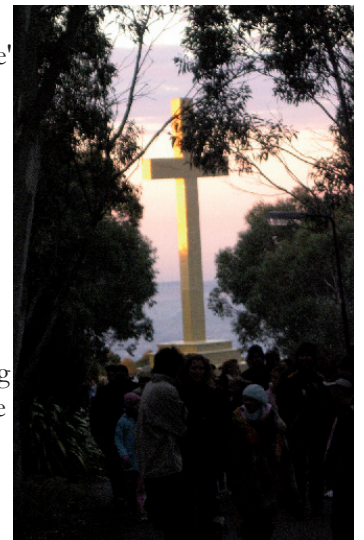
Woodend Scouts Maintain ANZAC Tradition

For the past 15 years, Roger (Doc) Neil – 1st Woodend Scout Leader, has organised his troop of brave Scouts, Leaders and Parent helpers to assist with the traditional remembrance ceremonies of ANZAC Day at the Memorial Cross on Mount Macedon. This year was no exception.

At dawn on April 25th, his loyal followers were there once again, with barbeque plates sizzling and hot water urns steaming to provide breakfast and refreshments to the hundreds of people who attended to honour the memory of the ANZACs. For Roger, preparations for ANZAC Day begun weeks earlier. On ANZAC Day eve, he organised tents, pegs, ropes and poles, barbeques, gas cylinders, tables, lamps, two dozen people and a hundred sundry items and headed on up to "The Mount" to get set up for the morning. At over 3000 feet above sea level, Mt Macedon is easily a few degrees cooler than elsewhere so the night called for a warm sleeping bag. When sleep did come, it was broken at 0400 hours by troop Matriarch, Colleen Dwyer-Gray, sounding the wake-up call.

The Cubs-Scouts too, played their part: Both 'Burke' and 'Wills' packs participated in a joint sleep-over at the Woodend Scout Hall on ANZAC eve. They received an early wake-up call for a quick breakfast followed by a trip up the Mount to join their pack-mates for the ceremony including the laying of a wreath to commemorate the 95th anniversary of the Gallipoli landings.

Cubs, Scouts and Venturers participate in many Community events such as ANZAC Day and Scouts Australia provides young Aussies aged 6 to 25 with fun and challenging opportunities to grow through adventure. Today's Scouts can take part in an extraordinary variety of outdoor activities, from 'traditional Scouting skills' such as camping and bushcraft, through to more extreme challenges such as abseiling, overnight hiking, rafting, canoeing, canyoning, snow activities, rock climbing, sailing...even flying! Freecall 1800 SCOUTS for more info or contact 1st Woodend Group Leader: Jenny Johnson on 54274968 / 0488 445066 for membership enquiries.





New Members

The Rotary Club of Woodend

Put something back into this great community and be part of a worldwide organisation that helps build goodwill and peace allowing ordinary people to achieve extraordinary things and bring about exceptional change in the world.

Contact Brendan 5422 6442

The New Woodend Star

An initiative of the Rotary Club of Woodend Inc.
The Bank, 75 High Street, Woodend, Vic. 3442
ABN 32 685 225 161 No. A0021518E

Layout & printing by Collier Office & Business Assist

For people wishing to submit articles simply place the information in the strategically placed drop-boxes. These are located at the Liquor Shop, Collier Office & Business Assist, The Bank @ 75 High Street and Woodend Newsagency.

EMAIL articles preferred: sales@collieroffice.com.au

Circulation: 3190 copies throughout Woodend and district.

Disclaimer: Articles and comments published in this newspaper are the result of contributions from local groups and relevant news articles pertinent to the Woodend district. Neither the Rotary Club of Woodend Inc., The New Woodend Star nor the editorial team are liable for any mistakes, omissions, or misprints. It prints and makes no representation as to the truth or accuracy of any description, and accepts no liability for any loss suffered by any person who relies on any statement contained herein. The opinions expressed are not necessarily those of the editorial team. The committee reserves the right to omit, reject, cut, alter or otherwise re-work submitted articles to make them suitable.

Committee: Barry Napthine, Ivor Johnson, Claudia Green, Brendan Watters, Alexia Downie, Sue Macklin & Jane Watters

Closing date for inclusion of articles or advertising for each issue is the 15th of the month prior to publication

Information for advertisers

All rates include GST & are priced per month.

- Business card (55mm x 90mm) \$45 inc GST
- Trade Page \$30 inc GST
- Quarter page (90mm x 134mm)..... \$95 inc GST
- Half page (134mm x 190mm)..... \$170 inc GST
- Full page (190mm x 277mm) \$295 inc GST
- Insert (of your printed brochure)..... \$210 inc GST

Advertisers: Please note - it is in your interest to book and pay for a year in advance, as a 10% discount applies to any full year pre-paid booking. Any existing pre-paid ads will revert to the new rate on completion of the pre-paid period.

Advertising bookings to be made with Alexia Downie on 5427 3092 or sales@collieroffice.com.au.

Accounts queries can be made to Sue on 5427 4089 during office hours or nws@johnsonwoodend.com.au
Mail should be directed to: New Woodend Star, C/- The Bank, 75 High Street, Woodend 3442.

Woodend Star Publication Dates for 2010

June	31st May	September	30th August
July	28th June	October	27th September
August	1st August	November	25th October
	Dec/Jan	29th November	

Changes to advertisements, new advertisements or cancellations must all be made by email or in writing. All advertisements will be placed and charged for until notified otherwise.

SUBSCRIBE TO THE NEW WOODEND STAR

Do you live outside the New Woodend Star distribution area? Be sure to receive your copy every month by subscribing. A yearly subscription of 11 issues is just \$27.50. Post to New Woodend Star, C/- The Bank, 75 High Street, Woodend 3442.

Name: _____

Address: _____

Phone: _____ Enclosed: Cheque/Money Order for \$27.50

Celebrating the 2010 Woodend Carnival

Once again, the weather was perfect for the 2010 Woodend Carnival hosted by St Ambrose School and Parish on Saturday 17th April. Some new ideas this year saw a huge crowd come and enjoy the stalls and activities on the school oval and in the hall. The oval was a sea of colour and noise with brightly coloured tents, flags and endless shrieks as the kids enjoyed a ride on "Bad Boys". The new cup cake decorating stall proved to be huge hit with kids and adults alike and the annual Pet Show again attracted numerous well behaved animals from dogs to ferrets to lizards! A full program of entertainment provided carnival goers with a variety of music with the biggest crowd once again assembled for Woodend Idol. The winners of the 2010 Woodend Idol were Lachie Bubb and Josh Martin, with equal second place going to locals Amy Miller and Jamison Purcell. We wish these talented musicians well with their future music endeavours.

The major raffle winners were: 1st - Chloe Cameron
2nd - Glen Collins, 3rd - Di Harper 4th - Lloyd Family

The Carnival committee would like to take this opportunity to sincerely thank all of our sponsors for their donations. Predominantly these businesses are from the local Woodend community and we know that you are constantly asked to donate to a variety of organisations in the local community. Without your support we would not be able to run the event that this Carnival has grown to be.

Special thanks to all of the volunteers from the school and parish community who helped in the planning of the day and of course during the actual Carnival.



The Cut & Colour Salon

Keratin Complex Smoothing Therapy is the answer.

Have you ever wished that your hair was more manageable... Softer.... Smoother, had more shine?

Spend less time smoothing your hair and have straight, smooth, frizz free hair for Autumn/Winter

Phone or book online

105 High Street Woodend 54 27 3030
www.bellasaloon.com.au salon@bellasaloon.com.au

WOODEND
winter
arts
FESTIVAL

Woodend Winter Arts Festival Jam-Packed Weekend of Young People's Events

Festival to feature workshops with well-known slam poet Emily Zoey Baker, celebrated author Leigh Hobbs and a hilarious production by The Children's Theatre of The Glugs

The 2010 Woodend Winter Arts Festival continues to present an expanding roster of exciting young people's events as part of this year's festival. From slam poetry workshops to children's theatre, the weekend festival is packed with inspiration for kids and teens, with many events providing free entry.

This year will feature a hilarious adaption of the The Glugs, from the verse of CJ Dennis on Sunday 13 June at 2.30pm and Monday 14 June at 11am. This comedic radio play, with audience participation, is reminiscent of The Goon Show and has as much contemporary resonance for young audiences as it did when it was written almost 100 years ago.

For aspiring young writers, hip poet Emily Zoey Baker, one of Australia's leading spoken word artists, will take a free poetry workshop on Saturday 12 June at 10am. Exploring different styles of poetry, slam and spoken word, teens will learn to express their ideas in a constructive and entertaining environment.

Young kids can learn how to create a character with artist and author Leigh Hobbs, in a free workshop on Saturday June 12 at 10am. Best known for the children's books he has written and illustrated featuring his colourful characters Old Tom, Horrible Harriet, Fiona The Pig and

Mr Chicken, Leigh Hobbs will show kids how much fun and how simple it is to create a character.

Other exciting events for young people include a performance and Japanese drumming workshop with the spectacularly energetic drum ensemble Wadaiko Rindo and a cartoon workshop with renowned political cartoonist Neil Matterson.

Now in its sixth year, the 2010 Woodend Winter Arts Festival brings together a festive celebration of music, art, literature and children's activities over the Queen's Birthday weekend, from Friday 11 June 11 to Monday 14 June. Only 50 minutes from Melbourne by car, the festival is set amidst the picturesque and relaxing regional town of Woodend, at the foothills of the Macedon Ranges.

To book your tickets, go to the website www.woodendwinterartsfestival.org.au

Woodend Rainfall Report 2010

Each month we add the rainfall details and the year to date total. Our rainfall report shows, **2005, 2006 2007 2008 2009 and 2010** comparisons. Please note that your own rainfall readings may not exactly match these. The New Woodend Star apologises for the inaccuracies in last month's reporting of the rainfall recordings.

	2005	2006	2007	2008	2009	2010	
January	47.4	49.8	83.5	17.1	0.08*	54*	Jan
February	72.2	53.1	27.4	22.1	2.5*	71.5*	Feb
March	5.8	20.6	35.7	25.4	42.5*	121	Mar
April	18.8	46.4	20.2	20.4	51*		April
May	13.6	58.8	95.7	43.7	30.5*		May
June	116.7	36.0	105.1	88.7	66.5*		June
July	76.9	91.6	83.3	112.5	76.5*		July
August	125.0	30.8	34.8	52.2	107.5*		Aug
Sept	55.2	50.6	49.8	42.0*	88.5*		Sept
Oct	49.8	5.2	12.1	13.0*	46*		Oct
Nov	72.4	13.0	91.0	67.2	99*		Nov
Dec	40.0	31.0	101.2	96.0*	60*		Dec
YTD:	693.8	486.9	739.8	600.3	670.5	246.5	YTD

Reminder: We are now on Stage 3A water restrictions.

Figures for 2008, 2009 & 2010 include information from a different location indicated by *.

For the year of **2009** there was rainfall of

670.5mm

1 inch = 25.4 mm therefore the total year to date is 9.07 inches

Natural Face Lift

- ANTI AGEING FACIALS WITHOUT HARMFUL CHEMICALS
- ENVIRONMENTALLY FRIENDLY PRODUCTS
- PAMPER PACKAGES & GIFT CERTIFICATES

20% OFF
DURING APRIL/MAY
(MENTION THIS AD)

Woodend Simply Health
Shop 35A Anslow St, Woodend
PH: 03 5427 4237 or 0409 796 568

Discover your
inner artist

ART & CRAFT MATERIALS

Join our Craft Workshops

• Beading • Card Making • Scrapbooking •
43 Anslow St. Woodend **5427 4455**

Buda, Historic Home & Garden

Home of the noted gold and silversmith Ernest Leviny and his family from 1863 to 1981 featuring: Authentic furnishing and arts and crafts collection, significant heritage garden and grounds. Also, *Opening the Glory Box*, discover the origin and history of precious items of linen, lace and embroidery including embroidery tools. Expert textiles appraisals by members of the Embroiderers Guild, Victoria with expertise in Australian, European and Asian works. \$5 Per item (max 3 items) Saturday 22nd May 10am to 5.00 pm. Registrations at 9am in Buda's Garden room 42 Hunter Street, Castlemaine.




BUDA
Historic HOME & GARDEN

Wednesday - Saturday 12 to 5pm
Sunday 10am to 5pm
Groups by appointment
T: 5472 1032
E: admin@budacastlemaine.org

All news items, articles and community news columns must be received by 15th of each month.

AGRICULTURAL CONTRACTOR



PHILIP BEATTIE PTY LTD

Located in the Macedon Ranges and servicing a wide surrounding area, Philip Beattie Pty Ltd can provide you with the latest equipment and operators for you to produce the best in

- CROPPING
- PASTURE RENOVATIONS
- SPREADING/FERTILISING
- ZERO TILL RENOVATIONS

Now with the added feature of an Outback GPS Guidance System to enable full and accurate mapping of your paddocks

At Philip Beattie Pty Ltd we can also provide you with all your hay making requirements supplying

- Mowing
- Large Square Bales
- Small Square Bales
- Raking
- Round Bales
- Silage Wrapping
- Teddering

Contact:
Philip Beattie Pty Ltd
45 Millers Lane
Newham Vic 3442
Ph/Fax (03) 5427 0702 Mobile 0419 573 226
psbeattie@bianond.com

Childrens Park for Cambodia

Woodend's Cambodian Kids Foundation in collaboration with members of The Woodend Children's Park committee are excited to promote a very special event on the morning of Saturday May 8th that we would like to invite you to.

The event is generously sponsored by Woodend's historic venue The Bentinck, and hopes to raise funds to purchase vital play and learning equipment for the school in Cambodia built by the Cambodian Kids Foundation and the community of Woodend. The school, the Saing Sy Centre is essential to 5000 children in the village of Thnal Bek. Most of the outhouses and classrooms have so far been built, but the children are needing outdoor play equipment to aid in their physical and overall well being.

As the townspeople of Woodend have experienced in building their own community playground, equipment such as this is essential to the health and development of children. The overall aim for this breakfast is to raise sufficient funds to purchase all of the equipment required.

Artists and businesses in the Woodend district have all donated beautiful and generous offerings to be silently auctioned at this event. There promises to be a lot of laughter and door prizes, a full continental and cooked breakfast and champagne on arrival.

Full tables may be booked by phoning 5427 3606, and individual tickets at \$40 each may be purchased at Color Me Cooper, Woodend. The morning commences at 9am at The Bentinck and concludes at 11am.

It is a wonderful, purposeful way to spread happiness that Mother's Day weekend - why not bring your Mother, Sister, Friends or Neighbour to enjoy a special morning that will again bring our community together for a worthy cause for the kids.



MACEDON RANGES BUSINESS CENTRE

- free desks Tuesday 4th May
- free desks Wednesday 12th May
- free desks Thursday 20th May

FREE MEMBERS DAYS IN MAY

03 5460 8404 www.mrbuscentre.com.au



JULIE ANN WARD
Visiting Hair & Beauty

"Home service with a smile"

9 Ashbourne Road
Woodend Vic. 3442
P: 5427 1538
M: 0423 676 415

Vintage Get Together

All talk and no play? Well girls, It must be time for another Vintage Get Together. Please join us on Saturday the 8th May for an afternoon of great company, Champagne and finger food to raise money for the Cambodian Kids Foundation. Entry is just \$5 and each item is \$5. There's also a raffle and door prizes to be won.

We're in need of good quality Women's Clothing Bags Shoes and Jewellery. Please deliver all donated items to 183 Bawden Rd Woodend. This is a great opportunity to recycle your wardrobe whilst supporting this wonderful ongoing fundraising event. Please book by 4th May with Natalie on 0488 519 702..

MASSAGE THERAPY

with *Natalie Taranto*
Reconnect and Restore the Flow Within

NEW PREGNANCY MATTRESS!

*Enjoy your pregnancy
massage lying face down*



58 Urquhart St. Woodend
Call for an appointment
0402 534 983
mobile massage also available

WOODEND

Proud to be Pokie-free

Save Your Wardrobe
Save Your Pocket
Save The World

Saving grace

recycled fashion

42 Anslow St Woodend T 0431 734 897

Kyneton Physiotherapy

ROBERT ROUSE
B. App. Sc. (Physio) Member A. Physio. Assoc.

Move Well. Stay Well!

Registered for Comcare, TAC, W/Cover, Vet. Affairs
NO REFERRAL NECESSARY

74 High St., (Corner New St.,) Kyneton

20 years on High Street! 5422 2290

Woodend Community Children's Garden

The Woodend Children's Community Garden at the rear of Woodend Primary School has taken a step forward these past school holidays with the drainage issues resolved, and new signage erected to mark the start of the program.

Many kind thank' to the principal Andy Kozak and the school for funding and providing such wonderful support for this exercise. Thank you also to our generous supporter Shane Bartley from Macedon Ranges Signs who has donated the signage for the duration of the project, and thank you to Jacqui Henshaw for allowing us to use her photographs to advertise the Community Garden. Brad Welsh and Andrew Walduck gave their time in putting the signs up. We hope you agree they help make all the entrances to the school colourful and cheerful – a wonderful image of the spirit of the Woodend Community.

With sleepers salvaged from the middle school unit garden redevelopment, the garden beds are now all ready to be constructed. On Saturday, the 15th of May we are seeking a dedicated crew of volunteers from the community to pull the sleeper walls in place and start pulling the Michael McCoy garden design together. Bill McKnight from Trentham Mini & Earthwork Services will assist in cutting the pathways and smudging the granite pathways beforehand.

Calling for volunteers!

If you are keen to get involved, please email kirstymw@bigpond.com

The working bee will commence at 9am, and lunch and refreshments will be provided.



*Woodend Childrens Community Garden Volunteers;
Emily, Charlie, Lauren, Zoe, Adam, Henry, Jemima and Jasper*

Contemporary Blinds

"Quality Blinds at factory Direct Prices"

- Latest Styles/Fabrics/Colours
- Sunscreen/Blockout Blinds
- Roller/Roman Blinds/Venetians
- Automated Blinds
- Professional Installation Team
- Exterior Awnings

Ring Now for a **Free** In House Consultation/Quotation

Mark 0437 759013 Woodend Simon 0458 338995 Keilor East

Where Style is Affordable

Woodend Winter Arts Festival Funding Agreement

Macedon Ranges Shire Council and the Woodend Winter Arts Festival Inc have signed a 4 year agreement for ongoing funding for the annual festival. The funding, subject to Council's annual budget process, has been allocated as \$10,000 per year over a four-year period. This funding will assist the festival in gaining further funding and to maintain the quality and development of the event.

The event, in its sixth year, attracts over 5,000 people to the region and aims to build on these figures each year. The popularity of the event can be reflected in sold-out shows and the recognition received by national and international media.

Founder and Artistic director, Jacqueline Ogeil says that the funding agreement is a positive step forward for the festival and acknowledges the Council's work and support over the past 5 years.

"The festival has benefited from Council support whether it be marketing and promotion or general advice. We have developed a strong working relationship through the past events and aim to develop this over the next four years of the agreement," she said.

Programs are available at various outlets across the shire and tickets are on sale now. Bookings and details at www.woodendwinterartsfestival.org.au

All news items, articles and community news columns must be received by 15th of each month.



Design & Installation of Renewable Energy Systems

- Grid connected domestic solar systems
- Stand-alone solar & wind generator power systems
- Farm & residential solar gate openers
- Solar bore, dam & tank pumps
- Garden & landscape lighting

Tired of getting out of your car to open and close your gates? Automatic Solar Gate Openers

Single: \$1700 *

Double: \$1900 *

Why not open your gates from anywhere in Australia using your mobile phone?

GSM wireless intercom / access control

AC Model: \$900 *

DC Model: \$995 *

* Fully installed GST included, subject to site inspection

Contact: **Ray**

Telephone: **5426 2574** Mobile: **0416 085 276**

Email: raypaul.solarplus@gmail.com

TITAB T08698 – BCSE P2026

• Home • Land • Motor Vehicles • Investments • Debt Consolidation



The  [®]
MORTGAGE GALLERY

We are passionate about finding the right loan for you!



MFAA
ACCREDITED MORTGAGE CONSULTANT

Have you got time to shop around?

With access to over 20 lenders, call Matt today for a FREE no obligation consultation to assist you in selecting the right product for you.

Matt Roulston

M: 0403 955 907

P: (03) 4433 1090

F: (03) 4433 1290

Pets Haven

Pets Haven Pro Life Animal Shelter is a facility that houses homeless, lost or abandoned cats and dogs.

We do not euthanise animals for economic reasons; the only time an animal will be euthanised is aggressive temperament or the animal is extremely unwell and the prognosis is not favourable.

All animals in our care are released vet checked, desexed, vaccinated, microchipped, wormed and scanned for ringworm and have been profiled.

All animals are assessed prior to adoption. If a Pets Haven staff member does not think an adoption is suitable, the adoption will not proceed. In the adoption process the right environment for our animals is one of our main concerns. Our animals have already gone through enough pain and uncertainty.

We also take in unwell animals and provide the required veterinary treatment and after care. Animals that are unwell due to no fault of their own do get better and deserve loving homes.

Some animal shelters humanely euthanise animals that are not adopted within a set period of time, usually after an eight day period. Pets Haven has a 'no time limit policy' where we hold onto our animals or foster them until they are adopted.

At Pets Haven we really get to know our dogs and cats that are up for adoption. We are able to match you up with the perfect companion. We can also help you get through any rough spots by offering training tips and other advice.

Simply, my staff and I love all animals. We just want to make a difference and responsibly help orphaned pets and litters. First Option - Is Adoption

If you would like to adopt an animal, come and see us at Shop 6 130 High Street or check out our website www.petshaven.com.au





Turned over any New Leaves lately?

Woodend's Favourite Bookstore also stocks a beautiful range of Homewares, Furnishings, Garden Equipment and Toys.

We welcome Special Orders and Lay-Bys, and Gift Vouchers are available.

Cnr Anslow & Collier Sts, Woodend
5427 3772
Closed Mondays



Macedon Ranges Equine Vets

- Full equine services including x-rays, ultrasound and endoscopy
- Foaling down
- Microchipping
- Dentistry
- Lameness

0400 449 990 03 5428 1888

Oh Brother !!!

Your badge tells me you're a Star. You arrived just after my first child, and have been with me for 14 years. We've always fought and I know I must shoulder some of the blame for not understanding many of your intricacies. We've shared eight different houses, and travelled the length of the country. I usually make you sit in the back.

You're happy to sleep on the table, in the cupboard and occasionally I'll take you visiting. The children have all loved you, and you never mind when they crawl on the floor and play with your foot. We've clothed them and comforted them. Bathrobes, curtains, quilts, snuggle rugs, warm little outfits to guard against the winter chills.

Together we have created some beautiful memories, but as age deteriorates you, the abuse becomes more regular and I'm afraid I can no longer tolerate your failings and inconsistencies.

A Star you are, but lately I've been eyeing off the Singer, and Ja-no-me. I don't give a Pfaff for sentimentality. I just want a sewing machine that works.

YOU'RE A WASTE OF COTTON.

(Yes, the bloody thing's been playing up)

by Kathy Mexted

BUSINESS FOR SALE

due to impending retirement

Eloise and Ken

LADIES AND MENS CLOTHING

Great business, good profits & simple to manage
Trading 38 hours per week

96A High Street Woodend
Phone Lesley 5427 9999

TRAPS

EFFICIENT CONTROL OF RODENTS, FERALS, PESTS

- > Quality robust range of traps for home, farm or business
- > Cages, electronic and bait stations > Foxes, rabbits, cats, dogs, possums, rats, mice, birds > Collect, mail order, rentals

GEONATURAL.COM.AU

Trap@GeoNatural.com.au Phone 5422 2856 or 0411 555 644



WILLIAM BAJZIK N.D.
 NATUROPATH
HOMEOPATH HERBALIST
 BOWEN THERAPIST
 ATMS 5485

- IRIDOLOGY • ALLERGY TESTING •
- ACUPUNCTURE POINT ANALYSIS •
- HERBAL MEDICINES •

P: 5427 1666
 M: 0402 880 271

42 ANSLOW STREET
 WOODEND

Cancer and Natural Therapy Foundation

What's on in May 2010

The Foundation provides the following services and resources: information and referral, resource library, professional counselling, guest speaker program, support groups, reiki healing, ifas treatment, ear candling, quarterly newsletter, self help workshops and educational films.

Weekly Support Groups:

Health Awareness Support Group Offering meditation, reiki healing and general discussion on natural therapies and preventative medicine. Tuesday 7.30-9.30pm.

Self Empowerment and Healing Support Group

For "confidence building" and "positive living". Thursday 10-11.30am

Health Seminars for May

Natural Weight Loss for Health and Vitality by Dr John Piesse. He is a General Practitioner specializing in Complementary Nutritional medicine. Tuesday 25 May 7.30-9.30pm Cost: \$12 (\$8 members) Held at Neighbourhood House and Community Centre, Elizabeth Drive, Sunbury. Phone: 9740 3977 (Mon/Wed/Fri) or Sandra on 0411 100 947

Macedon Ranges Florist

local, interstate & overseas deliveries



42B Anslow St Woodend P: 5427 2037

BUSINESS FOR SALE, CALL LISA



Specialising in:
 CAR PARK KERBS • ASPHALT EDGING
 GARDEN EDGING • VARIOUS PROFILES
 REPAIR WORK



IAN
 0409 443 036

CENTRAL VICTORIAN TIMBER

- Timber •
- Sleepers •
- Treated Pine •
- Cypress posts •
- Hardwood •

Specialists in house lots and extensions

Phone: 5427 1090

Email centralvictimber@bigpond.com

Monday to Friday 8am - 5pm

Saturday 9am-12pm

TIMBERSEARCH AUSTRALIA P/L

Specialist recycled & reclaimed timbers

Beams Posts
 Flooring
 Firewood

Recalimed Wharf and Woolshed Timber

Open Friday & Saturday

Phone: 0418 999 385

www.timbersearch.com.au

Also on site: Alltask Carpentry & Joinery

Ph: 0458 273 617

988 Blackforest Drive Woodend (Old Sawmill Site)

Sand | Soil | Mulch | Pots | Pavers | Plants
Water features | Fire wood | Wine barrels
Hire Equipment | Synthetic turf | Sleepers

NURSERY ROAD
 GARDEN SUPPLIES

42 Nursery Road Macedon 3440 Victoria
 Email hello@nrgsupplies.com.au
 Telephone 03 5426 2400 | Facsimile 03 5426 4972
 General open hours Monday–Friday 7:30–5pm,
 Saturday–Sunday 9–5pm. Arrangements outside
 these hours can be made.

Woodend Red Cross

Dutch Auction

On Thursday 6th May the Woodend Red Cross unit will hold a Dutch Auction in the Masonic Building, Forest St Woodend. Start: 1:30pm Entry: \$5 Door Prize Raffle Afternoon tea. Everyone is welcome. There will be no May meeting. Next meeting will be held on Thursday June 3rd at 1:30pm in the SES building Urquhart street, Woodend

Submitted by P Wilson and J Podrazil

SOLAR DIRECT

- Solar Hot Water
- Grid Interactive Solar Systems
- Stand Alone Power Systems

Ph: 1300 55 77 98

Mobile: 0411 269 489

Lancefield

Woodend R.S.L. Womens Auxiliary

Firstly I would like to thank all who supported our Easter Raffle and here are the winners:

1st K. Stacey. Ticket F45, 2nd Doreen (supermarket chick). Ticket A88, 3rd Faye Ellis. Ticket F26, 4th Craig Geary. Ticket B82.

Now that our R.S.L. is up and running at full strength with many new ideas, new committee, and a very positive outlook, please consider patronising the R.S.L. We have excellent bar facilities, newly renovated kitchen and hall available for parties, weddings, meetings, etc., carpet bowls and two mats, all we need is the bowlers, and this will start in May if enough interest shown. Pool table, darts, and we welcome the Celtic Club who will be using our hall 2nd Friday each month commencing in May.

Our Auxiliary girls will be working to full capacity and we are in need of new members who can spare a couple of hours a month. You will be made most welcome. No age limit, so come along and join our happy group. Ring Betty 5427 2225.

Submitted by Betty J. Barned Aux. Secretary.

Julian Burnside at Duneira

Prominent legal figure Julian Burnside comes to Duneira Duneira is delighted to present prominent litigation figure Juliana Burnside AO QC 'On the Couch' on Saturday 8th of May at Duneira.

Julian Burnside is a barrister based in Melbourne. He specialises in commercial litigation. He joined the Bar in 1976 and took silk in 1989.

He acted for the Ok Tedi natives against BHP, for Alan Bond in fraud trials, for Rose Porteous in numerous actions against Gina Rinehart, and for the Maritime Union of Australia in the 1998 waterfront dispute against Patrick Stevedores. He was Senior Counsel assisting the Australian Broadcasting Authority in the "Cash for Comment" inquiry and was senior counsel for Liberty Victoria in the Tampa litigation.

He is immediate past President of Liberty Victoria, and has acted pro bono in many human rights cases, in particular concerning the treatment of refugees.



He is passionately involved in the arts. He collects contemporary paintings and sculptures and regularly commissions music. He is Chair of Fortyfive Downstairs and Chair of the Mietta Foundation.

He is the author of a book of essays on language and etymology, *Wordwatching* (Scribe, 2004) and *Watching Brief*, (Scribe, 2007) a collection of his essays and speeches about the justice system and human rights. He compiled a book of letters written by asylum seekers held in Australia's detention camps. The book, *From Nothing to Zero* was published in 2003 by Lonely Planet. He also wrote *Matilda and the Dragon* a children's book published by Allen & Unwin in 1991.

In 2004 he was elected as a Living National Treasure. In 2009 he was made an Officer of the Order of Australia. He is married to artist Kate Durham. It promises to be a fascinating afternoon. On the couch with Julian Burnside The event lasts for one hour without interval Saturday 8 May at 2:30pm at Duneira, Officer Lane Mt Macedon Cost: \$20/\$15 Concession) Bookings And Inquiries! Phone 5426 1490 Proudly Brought To You By The S.R. Stoneman Foundation

VILLAGE FURNITURE would like to
WELCOME you our new store at
90—94 HIGH STREET, WOODEND

where we have some exciting new ranges of furniture including very high quality leather sofas & recliner suites, solid timber (mostly hardwood) furniture and lots of decorator items. Many of the items are "ONE OFF" items with greatly REDUCED PRICES so hurry in; we would hate for you to be disappointed by missing out.
WE LOOK FORWARD TO SEEING YOU.



ABOVE: The TAMWORTH 220cm wide lowline TV unit (\$1199) is constructed from Victorian Ash & finished in a clear lacquer to show off the grain; it is part of a complete range which includes dining tables, chairs; buffet, coffee, lamp & hall tables and also a 160cm wide lowline TV unit.



LEFT: The BLACKRIDGE range is made from "wormy chestnut" - a species of Eucalyptus tree from the Gippsland region. The furniture is full of character, each piece has different variations in the wood grain. We have very limited amounts of this range, and **IT WILL SELL OUT.**
Pictured left: the 240cm x 120cm refectory table with 8 black leather upholstered chairs

Altogether ONLY \$2999



ABOVE: the ECOWEAVE dining chair has a very timeless style which will co-ordinate with any table. Available in sets of 6 or 8 we will negotiate a special package price if you also purchase one of our tables.



BELOW: the ST ANDREWS relaxer chair and footstool in 100% leather (Ivory only). The importers suggested selling price was \$1299 so at \$899 **THESE CHAIRS ARE A STEAL!** The headrest is adjustable (just like your car) and the back can be locked into any reclining position. The price includes the matching footstool.



ABOVE: La-z-boy is one of our most trusted and recognised brands and the HARBORTOWN recliner makes a wonderful accent chair. Usually only available in leather at \$1299, we have a limited quantity in this modern jacquard fabric at only \$899.



For the pinnacle of LUXURY this ELECTRIC reclining lounge suite is a dream. Only available as a 2 seater with 2 armchairs; all 4 seat positions will recline at the push of a button and will stop at any position for your ultimate comfort. **ONLY 2 AVAILABLE AT \$4999 chocolate brown top grain leather only.**



ABOVE: MENDOSA writing desk in antique white ONLY \$469



ABOVE RIGHT: the leather MADISON is available as 3 or 2 seater sofa or armchair and can be ordered any way you wish in a range of colours. It is made the old fashioned way with coil springs which are hand tied to the hardwood frame for long lasting comfort YET IT IS VERY AFFORDABLE - for example a 3 seater sofa and a 2 seater sofa pair in full top grain leather is ONLY \$2899

Both locations are full of interesting items of furniture, decorator items and collectibles which you are unlikely to see elsewhere.
OPEN at WOODEND every Saturday & some Fridays; SUNBURY, 13—15 Horne Street from Monday to Saturday as always!

Joanne Duncan
STATE MEMBER FOR MACEDON **MP**



Friends,

At the heart of good governance is honesty & accountability, as well as an understanding of the issues confronting the whole of society.
If you have any concerns you wish to raise, please do so.

Feel free to call me on:
5428 2138

Take Care Out There!

I'm sure there are lots of parents reflecting on how quickly their teenage kids grow up; as the year takes shape it's a good time to remind them that life's precious and every life lost on our roads is one too many.

Young people continue to be over represented in accidents on our roads. Each year, 18 to 25 year old drivers are involved in crashes in which approximately 120 people are killed and 2300 seriously injured. This is about one third of the Victorian road toll.

A lack of driving experience is a major road safety problem for young drivers. Research has shown that in the first two years of licensed driving, learners who have had 120 hours of driving experience have a 30 per cent lower risk of crashing.

I understand young drivers are very keen to get their licence as soon as they can, but the L plate period is a great opportunity to practice driving in all types of road conditions and to ensure they get 120 hours practice before they are out on the road on their own.

In addition to recording the hours spent driving, it is also important for supervising drivers to record information about the types of weather and road conditions experienced to encourage learners to get experience in all types of driving conditions, including night driving.

Each day dozens of people are admitted to hospital because of serious injuries received in road accidents in Victoria's hidden road toll. These numbers do not take into account the impact of these crashes on families and friends of those killed or seriously injured.

I urge everyone to heed the road safety message and to take responsibility for safety on the roads.

Joanne Duncan
State Member for Macedon

WOODEND COMPUTER SERVICE
Sales - Service - Training & Help
THE BANK - OFFICE 3 - 75 HIGH ST WOODEND
JASON JOHNSON - 0400528129
pcs@live.com.au

Macedon Ranges Arts Ball

Now a permanent fixture in the Arts Calendar, The 4th Annual Arts Ball is shaping up to be as spectacular as you have come to expect.

Take a trip back to the golden age of burlesque, with dazzling performances combining a unique blend of dance, humour and cabaret that were among the most popular forms of entertainment from the 1930's through to the late '50's Dress as burlesque as you dare, bring a plate and good company. tickets \$38 Saturday 22nd May at the Town Hall,



alexander technique: an education for living well.

Alexander Technique

Reduce, manage or eliminate stress headaches, muscle and joint pain. The Alexander Technique addresses the underlying problems and puts you back into control for yourself.

Margaret McGill has been teaching Alexander Technique for more than 20 years.

Contact Margaret on **5428 6461**

Pamela Kell

Remedial Massage Therapist, Level 1 Pilates Instructor
SSNT/AAMT, Workcover accredited
Relaxation, Sports, Remedial Massage
Manual and Lymphatic Drainage
By Appointment
22 Goode Street, Gisborne
5428 1000 0408 093 098

CASTLEMAINE—GISBORNE CLEANING SERVICE

CHRISTINE ADAMS, FRYERS ROAD, ELPHINSTONE 3448

Carpet Cleaning Specialists Duct Cleaning, Window Cleaning, etc.

For all your cleaning requirements
- no job too big or too small -
obligation-free quotes

Tel: 5473 3307 Fax: 5473 3310
Mobile: 0419 006 591



24sevenalarms.com.au

24 Seven Alarms Aust Pty Ltd

- Alarms installed, Serviced and Monitored
- Data cabling and phone line installation
- Medical Alert Systems
- Access Control Systems PSBL: 732-083-90s
- Digital Video Surveillance CCTV packages: domestic and commercial

1800 247 111/ 03 5427 4411
sales@24sevenalarms.com.au

Council's Consultation Review

At Macedon Ranges Shire Council, we are reviewing our processes to improve the way we consult with you.

Our consultations relate to all sorts of matters including the development of services and facilities, land use planning, community-based projects, protecting and improving the natural environment, business development, tourism, streetscapes and more.

We are particularly interested to hear how you prefer to be consulted and how you like to find out about consultation opportunities. If you would like to be added to our mail list for this consultation review, please email rhandley@mrsc.vic.gov.au or phone Ros on 5422 0310.

Woodend Visitor Information Centre

High Street Woodend
Ph 1800 244 711



DRIVING SCHOOL

Fully accredited, licensed instructors
Manual or Automatic
Gift Vouchers Available
Serving the Macedon Ranges & Sunbury

Call Frank 0417 014 450



Accountants, Advisors & Planners

Office Locations:
111 High Street, Woodend Ph: 03 5427 8000
2/19 Bourke Street, Kilmore Ph: 03 5782 1273
email: admin@riverwoodgroup.com.au
website: www.riverwoodgroup.com.au

Riverwood Group can offer a *Total Financial Solutions* package for you and your family. Take a look at some of the services we provide:

Taxation
All your taxation requirements to suit individuals and small businesses.

Investments to Create & Protect your Wealth
Managed Funds, Indexed Funds, margin Lending and more

Planning for Retirement
Allocated Pensions, Centrelink Benefits and Payments

Stockbroking
Recommended lists, broking facility available, share updates

Superannuation & Rollovers
Advice, placements, Self-Managed Super Funds and Eligible Termination Payment Advice

Other Services
Home & Investment Loans, Business Loans and Leasing, Income Protection, Life Insurance, Professional Indemnity, Estate Planning and more.

Eating Out, In & Around Woodend



Viv's Organics

We deliver to your home the
 freshest, best quality, certified organic fruit & vegetables available & guarantee this 100%

Pick from a range of pre-selected boxes or select your own order from our weekly availability list

Phone: **0409 386 875**
or **5429 1156**
email: vivien@netcom.net.au

www.vivsorganics.com.au

HOLGATE'S BAR & RESTAURANT



Microbrewery Hotel with cosy open fires, stained glass windows and friendly atmosphere. Award winning local beer. Delicious meals including house-made bread, pasta and desserts. Function room and stylish accommodation now available.

Open for Lunch Tues-Sun. Open for Dinner 7 Days

79 High Street, Woodend
Ph 03 5427 2510

CAMPASPE HOUSE
A COUNTRY HOUSE HOTEL & RESTAURANT

Harvest Festival Dinner

Join us on Saturday 29th May, 2010 as Campaspe House and Paramoor Winery team up to present a degustation dinner matched with fine wine @ \$100 per person

Bookings essential

Goldies Lane Woodend Telephone: 5427 2273
Email: reservations@campaspehouse.com.au | Web: www.campaspehouse.com.au



Frank & Rose Gorlitz

Open 7 Days
8am till late

For Bookings breakfast, lunch & dinner
Ph/Fax 5427 4447
Mobile 0488 423 537
"Where Lovers of Food Eat"

Space is still available in the Eating Out pages. A great way to let your customers know about your new menu or specials. Advertisements start at \$45

Zarby's
Wine bar & bistro

Open Wednesday -Saturday
10am till late

84-88 High Street, Woodend P: 5427 4414

* FAB FOOD
* FUNCTIONS & CATERING BY ARRANGEMENT
Bookings Essential
BYO wine only
Light Snacks Mondays
Free entry for Macedon Ranges residents

Tel: 5427 0295
Large range of Australian Gifts

Hanging Rock Café & Country House

What's hot at RedBeard?



Red Hot Music:
Maria Forde
Saturday 8 May
\$45 dinner+show \$10 show only
Bookings essential: 5424 1002

A talented songwriter with an angelic voice, Maria blends her Irish musical heritage with Australian sensibilities, enrapturing audiences here and internationally.

Scotch Oven Community Roast: 5pm Sunday 23 May
A special event for the Daylesford-Macedon Ranges Harvest Festival. Adults \$30, children under 13 years \$15, under 6 years free.
Bring your favourite joint of meat and we'll roast it in our 19th century woodfired oven. Price includes organic roast vegetables, salads, sourdough bread, live music and full table service. Drinks not included.
Visit our website or telephone 5424 1002 for details + booking form.

Sourdough Baking Workshops: 16 May, 30 May, 20 June
The perfect gift for a foodie... or for yourself!
See our website for details. Bookings: 5424 1354

RedBeard Historic Bakery
Open 7 days 8am to 5 pm Old Bakery Lane Trentham
www.redbeardbakery.com.au

Eating Out, In & Around Woodend



The Village Larder

Retro Comfort Food
(and great coffee!)

Produced with Passion and Skill

Open 8am - 4pm(ish) Thu - Tue

Phone 5427 3399
info@thevillagelarder.com.au
www.thevillagelarder.com.au

The Village Larder

Jana Hatfield and Ben and Marika Oost recently purchased the café on High Street that was known as Literary Latte. After a brief renovation the café has re-opened as The Village Larder. Marika and Jana, both highly experienced and qualified chefs, apply their skills and passion to seasonal and local produce to create what they term 'retro comfort food with a modern approach'. They take 'retro' to mean food from any era so you might find an ancient grain being used one day and baked golden syrup dumplings the next. The aim is to re-introduce customers to intense enjoyment, delight and thought in their food experience – to bring people back to the feelings they had as children when they stepped into their Grandmother's kitchen. They want customers to feel surrounded by The Village Larder's passion for food and professional warmth from product to plate.

The Village Larder serves excellent, Rain Forest Alliance certified coffee, provides a breakfast and lunch service, and offers cakes, baked goods and slices all prepared on site. Specialty Australian and house made produce, La Madre bread, a range of food related books and select cooking equipment is also available for purchase.

Marika and Jana are calling for people who have an excess of something interesting from their vegetable patch or fruit trees to contact The Village Larder. They will be happy to barter for good quality, organically grown heirloom varieties of herbs, vegetables and fruit. People have already brought in strawberry guavas, green tomatoes, herbs and plums. Or maybe you just have a food-related question or request – drop in sometime – The Village Larder staff never get tired of talking about food!



Not Just Fudge

126 High Street, Woodend

Home-made Fudge,
Natural Ice Cream, Coffee, Tea, Herbal Tea, Milk &
Thick Shakes, Cakes, Sandwiches,
Freshly Squeezed Fruit & Vegetable Juices

Ph: 5427 2210
Fax: 5427 2880



**MOUNT MACEDON
WINERY**

Book now for

*Mothers Day
Light Lunch*

open Saturday, Sunday & Public Holidays 11am - 5pm
433 Bawden (Douglas) Road, Woodend / Mt Macedon
www.mountmacedonwinery.com.au
5427 2735

Space is still available
in
**The New Woodend
Star.**

*Great exposure at just
\$45 per issue.*

Call Alexia for further information 5427 3092

THE *B*ROOKE STREET MEDICAL CENTRE

**What can I expect
when I see a Medical Student?**

Brooke St. Medical Centre currently trains Monash University 4th year Medical Students.

Much of a student's clinical training is like an apprenticeship – a lot is learnt on the job under supervision.



*Dr Ann-Marie Elliot – Coordinator
Monash Medical Student Training*

Medical students see patients on their own during the first part of the patient's appointment. This allows the student to gain experience interviewing patients and taking a history. The GP then comes into the room to consult with the patient. This allows the student to “learn while doing” with the GP. Students are often given study tasks to complete after a patient consultation. They may have to look up certain conditions, treatment options and referrals for example. This “hands on” learning experience under the direct supervision of a qualified GP is recognised as a premium way for medical students to learn.

Brooke Street Medical Centre is proud to support the education and training of health professionals.

In our last newsletter, we advised of the severe shortage of doctors in General Practice. Through participating in the training of medical students, we are all contributing to the potential pool of GPs working in rural General Practice for the future. We thank you for your support.

Flu Clinics

You can now book for a Flu vaccination – please ring reception on 5427 1002 for an appointment.

These clinics are bulk billed – your only out of pocket expense is the cost of the vaccination \$18. Those who are eligible receive the vaccine free.

This year the Government is offering free vaccinations for those who are aged 65+, pregnant or indigenous aged 15+; also eligible for free flu vaccination are those people with chronic illnesses or conditions that predispose to severe influenza illness. Your doctor will assess your eligibility. The Government is not offering a low cost vaccination for pensioners and health care card holders this year.

**Indigenous Health Program
“Closing the Gap”**

Under a new Commonwealth program, patients with (or at risk of) chronic disease, who identify as Aboriginal or Torres Strait Islander can access a Pharmaceutical Benefits Scheme Co-payment Measure in order to gain access to cheaper medications.

Patients can also elect to become registered with a General Practice under another new Commonwealth program: the Practice Incentive Program Indigenous Health Incentive, to help General Practices better manage chronic disease of indigenous Australians aged 15+. Under this program, health assessments and services for people with chronic disease aim to identify health needs early and provide planned care to manage chronic disease where it exists. Patients may consent to registering for one program and not the other if that is their wish.

Brooke St. Medical Centre has further information on the programs – please contact Di Page for further information and to register.

Brooke St. Medical Centre – tel. (03) 5427 1002 (after hours: tel. 1300 55 75 12)

Spanish in a Multilingual World

Despite the increasing use of English as a global lingua franca, the reasons for learning languages are more compelling than ever. Language skills have become the mark of an educated, and employable, global citizen.

English speakers have a significant advantage: English is the language of today's sole super power. It is spoken widely throughout the world as a lingua franca as well as a native language. However this should not encourage complacency. Reliance on one language places English monolinguals at a significant disadvantage in a multilingual world in which: 90% of the population live in countries where English is not the native language, 67% of the world economy lies in non-English speaking countries, 65% of the world's on-line population is non-English speaking

Then, why Spanish?

Spanish is one of the leading languages in today's world,

as well as Mandarin and Hindi. It is a truly international language in commerce and trade, communication, education, and many other areas. The popularity of Spanish is gaining momentum. Contrary to general trends in foreign-language enrolments, Spanish is attracting more students at all levels of Education. New Spanish programs open every year at universities across the nation. More and more primary and high schools are making the shift to Spanish.

For some, the sudden popularity of Spanish is difficult to understand and is sometimes attributed to fashion or mere coincidence. The reality is that Spanish is a unique LOTE in the Australian context because it fulfils some basic needs in ways that other modern languages cannot. Therefore, Spanish is one of the most widely spoken languages in the world. It is the official language of 21 countries and one of the official languages of the United Nations and the European Union. Spanish, English and other European languages share a common linguistic link with Latin.

Submitted by: Nelly Molina nellymolina@live.com.au

SPANISH

Learn from a *native* Spanish speaking teacher
Adult - children classes and private tuition

beginners to advanced
short courses for travellers

 Nelly Molina - LOTE qualified
nellymolina@live.com.au - 0421 363 939

STAIRS

DAVID GARRAHAN

FOR MOST STAIRCASE REQUIREMENTS

0408 153 124

· W · O · O · D · E · N · D ·

SIMPLY HEALTH





FREE!

B_E_E_ Delicate Fabric Wash
with purchase of any 2 B_E_E_
Cleaning Products

Shop 35A Anslow St, Woodend
PH: 03 5427 4237

Woodend Senior Citizens

Activities: Tuesday Bingo (win a gift) 1.30pm. Friday: Carpet bowls 10.30am, cards 1.30pm. General Meeting and Trading Table – Friday 7th May 2010 at 11am followed by lunch (bring or buy your own), then fun afternoon and cards at 1.30pm. Monthly Bus Trip: Living Legends (retired champion racehorses) after lunch we visit the Fire Services Museum, Monday 10th May 2010, please book early.

Members come join our activities and new members very welcome.

Submitted by A. Warnock President ph 5427 1644



FAIRHURST CONVEYANCING

and Secretarial Services

For all your
Property Transfers
Ring Sue Fairhurst on
5427 2382
27 Urquhart Street, Woodend
MVCA & AIC

Licensee:
A. (Sue) Fairhurst
Licence No.:
000316L



**MOUNT MACEDON
WINERY**

— *Your local Winery* —
Wine Tasting & Sales

open Saturday, Sunday & Public Holidays 11am - 5pm
433 Bawden (Douglas) Road, Woodend / Mt Macedon
www.mountmacedonwinery.com.au
5427 2735

Woodend Neighbourhood Centre

If you're new in town we'd love to see you at our Welcome to Woodend information session for new residents on Saturday May 15. This is your chance to find out about the community groups, services and opportunities available in town. Run in partnership with the Macedon Ranges Shire Council, the welcome session will be held from 10.30-12 so call into the Neighbourhood House at Forest Street and find out what's on offer.

So what else are we up to? Many of our courses are in full swing, but there are still opportunities to learn how to make cheese or build a deck out the back.

Our popular First Aid training runs for two Saturdays from 22 May. Or if you are considering a career as an Integration Aide in school or kindergarten, our Integration Support course, beginning this month, could be the starting point you need. We are once again offering Person Centred Counselling with Sam Luxemburg and Confidence Building with Joy Black.

Have you ever wanted to know how your body really works? Annie Waters will explain all in her Anatomy and Physiology for Curious People classes. For the would-be book keeper, we are running basic QuickBooks classes this month.

Perhaps you've longed for a paved deck or path in your garden but have given up waiting for someone to build it? If so, learn how with Tony in his DIY Paving course which is a blend of theory and practical sessions.

The cheese making happens on Saturday May 8 and other opportunities this month include basic car maintenance with Mike, silversmith jewellery with Fran Harkin and numerology with Janet Hill.

We are open five days a week and we offer internet access, photocopying and printing as well as regular courses on weekends and evenings across a broad spectrum of interests. We welcome new volunteers and tutors with knowledge to impart so come in and meet us at 47 Forest St, or call 5427 1845 or check our website wnci.websyte.com.au for further information about courses and classes.

submitted by Sarah Campbell Coordinator

Lancefield Romsey Wine Producers Present:

VINTAGE SHOWCASE

MAY 22 and 23

All within 10k of Lancefield, the Lancefield/Romsey Vignerons love to party and we're bits of "show-offs". Mind you, there is plenty to show-off with the usual harvest of Trophies and Gold medals.

We open our cellar doors and welcoming arms to show you the very best of Australia's cool climate wines.

A Showcase Dinner at Cleveland on Saturday 22nd May at 6.30p.m. Wines will be matched with the best of local produce. \$90 per person all inclusive.

Dinner Bookings: Cleveland Ph: 5429 9000

Come to the Party - we'll supply the goodies!

Cellar Doors Open Saturday 22nd & Sunday 23rd

Braewattie Cope Williams
Curly Flat Farrawell Lanes End Midhill
MorganField Mt. William Stonemont



Vintage Showcase 2010

It's party time again for the Winemakers of Lancefield and Romsey. With the new vintage now bedded down in barrel and tank and the vines tucked away for their winter sleep after an excellent season, the vignerons are ready to relax and enjoy the fruits of their labours.

Now in its third year, the Vintage Showcase is ready to roll on the weekend of May 22 and 23. Once again this happy band of boutique vineyards, all at high elevation and all within an easy 10km of Lancefield Post Office, are inviting you in to see just how good their wines are. As in previous years, the harvest has been more than just the grapes. A heavy crop of trophies, medals and awards reaped by the Lancefield and Romsey mob shows just how good is the terroir of this small area and how skilled and dedicated are the winemakers.

A gourmet dinner at Cleveland on Saturday night will perfectly match the district wine with local produce and at \$90.00 per head, wine included, it's a steal. All nine cellar doors will be open, 11 am to 5 pm. So visit us, eat and drink with us and party with us.

Braewattie, Cope-Williams, Curly Flat, Farrawell, Lane's End, Midhill, Morganfield, Mt William and Stonemont are waiting to welcome you again, and local B & B's, including Rochford Lodge will accommodate you in luxury.

The New Woodend Star aims to provide a voice for Woodend residents, Community groups and Businesses.
Editorial and publicity for community events is free, and all other contributions or business advertisements are most welcome.

This page is proudly sponsored by the 19th HOLE SHOPPING CENTRE



Upcoming Events & Meetings

May

- 7 "Anything Goes" Kyneton Town Hall
- 8 Vintage Get Together fundraiser
- 8 Woodend Childrens Park for Cambodian Kids fundraiser
- 8 Julian Burnside at Duneira
- 14 Zulya & The Children Of The Underground. Malmsbury Hall
- 15 Welcome to Woodend information session, Neighbourhood Centre
- 16 Lions Village Market
- 22 Arts Ball, Kyneton Town Hall
- 22-23 Vintage Showcase, Lancefield Romsey Wine producers

June

- 1 Toddlers workshop "Behind Every Mighty Toddler is a Mighty Parent"
- 11-14 Woodend Winter Arts Festival, visit www.woodendwinterartsfestival.org.au for information.
- 18 Wombat Stew Kyneton Town Hall
- 20 Busting Out! Kyneton Town Hall

July

- 9 Mario Lanza Story
- 14 Johnny Cash Tribute Show
- 17 Fox. Kyneton Town Hall

Community groups are invited to submit their event dates to be included in this listing

COMMUNITY GROUPS CONTACT DETAILS

Alcoholics Anonymous Friday night, Cobaw Community Centre 0409 131 144
 Australian Breastfeeding Association, Heather 5427 2398
 Cobaw Thursday Walking Group 5427 3340
 Daylight Masonic Lodge, 5427 2480
 1st Woodend Scout Group, 5427 4968, Jenny
 Friends of Macedon Ranges Library, Chris/Bill 5427 2469
 Garden Club 5422 6062 / 5427 3340
 Living Word Christian Church 5429 6327
 Historical Society, Courthouse, 5427 2523
 Macedon Ranges & District Motor Club, 10 Webb Cres, New Gisborne 1st Wednesday each month 8pm
 Macedon Ranges Animal Aid, Buffalo Sports Stadium, 5427 1752
 Macedon Ranges Bridge Club, 5427 4440
 Macedon Ranges Families of Children with Disabilities Support Group, 5427 3365
 Macedon Ranges Residents Assc. 5427 1481 or 5427 2651
 Macedon Ranges Communicators (ITC), 5427 2669
 Macedon Ranges Photographic Society, 1st Tues of month, Ron Mathews 5427 3284
 Probus, 5427 2003
 R.S.L., Anslow Street 5427 3122
 Red Cross, 5427 1260
 Rotary Club of Woodend, meetings weekly at Vic Hotel Thursdays 6.45pm, Kai 5427 1029
 St. Mary's Guild, 11am, 4th Wednesday of month
 St. Mary's Street Stall, 9-12 noon outside Woodend Newsagency (2nd Sat of the month)
 Woodend Landcare Group, Jo 5427 1909 or Doug 5427 0666, 3rd Tues Meeting, 4th Sunday Working Bee
 Woodend Angling Club, RSL Hall, 5427 2395
 Woodend Art Group, Railway Station, 5422 6172 or 5427 1659
 Woodend Business & Tourism Association, Cori 5427 3434, 2nd Tues of month (BATA)
 Woodend Hanging Rock Petanque Club, Hanging Rock Reserve Ph: 5427 2477
 Woodend Lions Club, Meetings 2nd/4th Wednesday each month, ph Robyn Roberts 5427 1342
 Woodend Model Railway Club, Buffalo Stadium
 Woodend Pony Club, 5427 2793
 Woodend Senior Citizens Club, Comm. Centre
 Woodend SES Training Nights, Urquhart St
 Woodend Winter Arts Festival Inc., Jacky 5427 1560

- Ian Marks Liquor**
1300 627 575 ext 24 & 34
- Blue Orange Concepts: homeware**
5427 4500
- Woodend Pizza & Pasta**
5427 3777
- Coles Supermarket**
5427 2377
- Collier Office & Business Assist and Woodend Copy Centre**
5427 3092
- Pets Haven**
5427 3603
- Mitre-10 Woodend Hardware**
5427 2314
- BP Woodend**
5427 2248
- Target Country**
5427 4366
- Macedon Ranges Travel Services**
5427 4777
- Kosmac & Clemens: optometrists**
5427 4577
- Woodend Cycles**
5427 2662
- Salvation Army Family Store**
5427 4421
- Loose Change Bargains**
5427 4466
- Bodywise Underwear**
1300 66 17 66
- Australia Post**
5427 2600
- Inner Artist**
5427 4455
- The Spa Beauty Therapy Centre**
5427 3322
- HIGH STREET SHOPS**
- Color Me Cooper: clothing/gifts**
5427 1454
- Chelleon For Hair**
5427 3246
- Not Just Fudge**
5427 2210
- RT Edgar Real Estate**
5427 1222
- Woodend Bakery Cafe**
5427 3434

PLEASE SEND US YOUR FUTURE DATES

Welcome BBQ & Family Day

Woodend Kindergarten's 2010 Welcome BBQ took place on March 21 for all the families in our kinder community. It was a fantastic day at Kinder – the rain held off and there was plenty of food and fun activities for the children. Above all, the BBQ offered a great opportunity for this year's Kinder families to get to know each other.

Everyone was invited to come in their team colours to celebrate the 2010 footy season kicking off that weekend and Joel Dwyer from Auskick kindly donated his time and talents to set up a small footy clinic with the kids (and dads) for the morning. And virtually all the children also benefited from Tamara Oldcastle's incredibly beautiful face painting. Thanks to Joel and Tamara for volunteering their time and skills on the day.

It probably goes without saying that a BBQ cannot be a great success without the food or the cooks. Many thanks to all the Kinder parents who staffed the BBQ and put in a huge effort cooking and keeping the masses fed. A very big thank you to Bertocchi Smallgoods for donating the bacon, Bourkies Bakehouse for supplying all the bread and rolls and Hardwicks Meats for donating the sausages. Many thanks also to the other local businesses who supported this great kindergarten event - Coles Supermarket, BP



Service Station and Mmm Coffee.

The day culminated in our annual Easter Egg Raffle draw. Due to the wonderful number of Easter eggs donated by our families, we had over 27 prizes and it was one of our most successful raffles ever, raising close to \$1,000. All prize winners have received and almost certainly have eaten their prizes by now! A big thank you to all the Kinder families and friends who donated Easter eggs for the raffle and bought tickets. Your support is very much appreciated and will go a long way to helping make 2010 another fantastic year for our Kinder children.

**CHINKA STEEL CONVEYANCING
(HEP Steel, Solicitor)
FOR ALL YOUR
PROPERTY SALES AND PURCHASES
RING CHINKA ON
03 5427 2477
74 HIGH STREET WOODEND 3442**

Kindergym

Kindergym is a fantastic program operated out of the Buffalo Sports Stadium for children aged from 6 months to 5 years. Kindergym develops children's gross motor skills, and is particularly great for developing coordination, balance, confidence and social skills as kids get prepared for kinder and school.

Each kindergym class includes a free play time, where kids can explore the equipment that has been set up for the session. It is a great opportunity for parents and children to connect and play together without the distractions of home. There is also group session time which includes movement and music activities.

The kindergym program has a new instructor this year. Lindy Rose brings her bubbly personality and some great new ideas to the program. Lindy also operates the Kindergym program in Gisborne.

Special days for term 2 include an autumn celebration on May 7th where kids need to bring along their beautiful autumn leaves and a dress up day on June 11th.

New participants are always welcome. For more information please contact the Buffalo Sports Stadium on (03) 5427 3411. Forest St, Woodend Friday Mornings \$8.50 per class; \$80.00 for 10 pass card. Classes: 9.30am (6months – 3 years); 10.30am (3 years – 5 years) Contact: 5427 3411

All news items, articles and community news columns must be received by 15th of each month.

TERRY'S GROUND CREW

0400 909 303

ENJOY YOUR PRECIOUS WEEKENDS

**MACEDON RANGES
VOUCHERS ACCEPTED**

**GET READY FOR
SPRING AND SUMMER**

**pensioner
discounts
available**

Paul Groves
Mobile 0414 928 491
Phone 5427 2171
**Computer Sales, Repairs &
Consulting**

Home and Office Networking
Onsite Repairs and Maintenance
New Computer Systems

paul@pcweirdness.com

Toddler Workshop

Behind Every Mighty Toddler is a Mighty Parent This free workshop will give parents of toddlers the opportunity to share ideas and experiences with others. We will discuss the developmental stage of toddlerhood and the joys and challenges this stage brings to your family. Discussion will also focus on parenting strategies you may use for this age group. Facilitated by Prue Robertson at the Woodend Neighbourhood Centre on Tuesday 1st June, 9.30am – 11.30am, bookings are essential. To register your attendance or for further information please contact Robyn Tickner (Maternal & Child Health) on 5422 0225. Presented by CentaCare Family Education Services in partnership with Macedon Ranges Shire Council For information on Occasional Care please call Family and Children's Services on 5422 0231 or visit the website at www.mrsc.vic.gov.au

Meta Massage

SPORTS/REMEDIAL MASSAGE, SHIATSU, REIKI
Raymond White

Telephone 0411 268 336

for an appointment

18 years experience • Chronic and acute conditions
Sports injuries • Rehab work

Peter Baker & Associates Barristers & Solicitors

Family Law
Criminal law
General & Commercial Litigation



Peter Baker
BSC & LLB (MONASH)

Juliana Smith
BM GDLP & LLB (UNE)

Fran Medina
BA LLB

By Appointment at: **27 Urquhart St. Woodend**
Head Office: 389 Hargreaves St, Bendigo

info@peterbakerlaw.com.au

Ph: 5441 7300 Fax: 5442 4232

FREE FIRST INTERVIEW*

*For advice only matters

ADVERTISEMENT

Donna Petrovich MP

State Member of Parliament for Northern Victoria Region

*Working for the
Woodend
Community*

Your Country Voice

5782 2011

84 Sydney Street, Kilmore

Authorised by D Petrovich, 84 Sydney Street, Kilmore.



Calls for improved facilities

Donna Petrovich, State Member of Parliament for Northern Victoria, has called for improved public facilities for breastfeeding mothers and parents of young children.

“Australian breastfeeding rates continue to fall well below national targets and we should be doing everything we can to improve this situation. Whilst everyone agrees that support for breastfeeding mothers is important, facilities available to mums and babies are not always of a very good standard,” said Mrs. Petrovich.

“Some women are happy to feed their babies in public, while others choose to feed somewhere private and they need to be able to do this in a safe and comfortable place.”

While there are no legislated standards for these facilities, the Australian Breastfeeding Association (ABA) has a national campaign to recognise premises which provide facilities to enable mothers to feed and change their babies and toddlers when they are away from home.

One of the key criteria in the ABA standards is that facilities should provide, ‘access for fathers who need to care for infants without interfering with the privacy of breastfeeding women.’

Mrs. Petrovich emphasised that women need to feel secure and relaxed when feeding their babies, and facilities should minimise the risk of embarrassment and assaults, such as the one perpetrated against a young woman while feeding her baby at a shopping centre.

A list of approved baby change and feeding facilities can be found at: www.breastfeeding.asn.au/products/babycare.asp. Parents can also contact the association via the website to report facilities that are not up to scratch.

“I encourage all parents of young children to contribute to this scheme by providing feedback on these change and feeding facilities and for all providers of these facilities to strive to meet the highest standards,” said Mrs. Petrovich.

For further information please call Donna Petrovich on 0417 573 109.



Preston
CopyWrite

Website Audits \$200

How effective is your website?

There's over 550 billion websites on the internet.

Need help making yours stand out?

Get your content professionally audited. Generate more traffic to your website. Improve the quality of your message.

Thorough written report provided - includes examples.

Ph Sarah on 0407 208 186

www.prestoncopywrite.com

Getting On With Google

I recently discovered a service in the Macedon Ranges that I didn't know existed.

I'd been traipsing to Melbourne every week to get my fix of this, my back aching as per usual with driving any further than the supermarket, muttering and cursing the entire drive and thinking to myself - surely someone must offer this particular service in this neck of the woods?? But alas, no luck. I couldn't find it anywhere.

Anywhere, of course, for any self-respecting modern computer-user being: it wasn't on Google.

Like many people I know these days, I apply the (usually very successful) search method of: if you want something - you Google it.

In a somewhat slothful (and obviously not always terribly effective...) manner, I assume if it isn't on Google, then it doesn't exist. I never EVER try the yellowpages these days. It's not that it doesn't occur to me; it's just that I assume Google will give me the best information about what I'm after.

Yet it seems there are services out there that are exactly what I need - they just don't rank on Google. And while I've heard of people saying that perhaps they have as much

business as they need (and the thought of the work a search-engine optimised website might bring in is enough to engender early heart failure) - if that's not you - here's a few (hopefully helpful) tips for writing a reader-friendly website:

- Even if you don't have a website and don't want one - you can get yourself on Google maps for free with your business name, location, and contact details.
- Research shows that readers scan websites, rather than read them - so make your point early, and make it stand out. Clear headings and subheadings help with this.
- Speak to your customer. They will lose interest very quickly if you have 'we' and 'us' on your website more than 'you' and 'your.' We're selfish creatures with short attention spans when it comes to the web, according to the research - which makes sense when you think about how many websites are offering similar products and services to yours. So tell your reader what's in it for them when they choose you.
- Be generous with space! It's much harder to read a computer screen than printed material. Break text up with bullet points and subheadings.
- Be concise. Use simple words, short sentences and short paragraphs. If there's a way to say it quicker - go with that option, every time.
- Write as you speak. And if you're not sure how it's going, try reading it aloud. If it doesn't sound like something you'd say in person, revise it so it does.
- Get clear about the goal of your website - work out what you want your reader to do, then ask them to do it (e.g. "call now for an obligation free chat about your needs.")

Remember your website is a 24-hour sales pitch - what it says and how it looks do matter. If you need help, you can find a writer or web developer to point you in the right direction... but if you want to have a shot at it at yourself at home - try Googling it! 'How to write for the web' should do it

submitted by Sarah Preston

MACEDON RANGES SELF STORAGE

- * 7 day access
- * Individual units
- * Affordable prices
- * Insurance available
- * Now Fully Alarmed

Store your:
* Cars
* Boats
* Business documents
* Furniture etc.

Lot 3, Hoyle Court, Kyneton 5422 1898
(Off Beauchamp St) 5422 3488

Tai Chi

Classes held in Woodend

Relaxation, flexibility, balance

Beginners Welcome

Enquiries and further information: 0407 349 497



Your Memories to DVD

- * 8 mm/16 mm Films
- * Compact VHS
- * Mini DV
- * VHS

Discount for Quantity



Top Hat Productions
Ph: 5422 3930



CONTINUING VETERINARY EXCELLENCE

Our commitment to you is to provide the highest quality veterinary services in medicine, surgery, health and wellbeing and preventative healthcare in a friendly, personalised & caring environment.

We care for all companion animals, equine, alpacas & livestock.

ANIMAL MANIPULATION

24 Hour Emergency Care

5427 4344

12 Anslow Street Woodend



FIREBIRD MOTOR REPAIRS CAR WASH

31 URQUHART STREET
WOODEND 3442.

OPEN 7 DAYS
Phone:(03) 5427 2255

All news items, articles and community news columns must be received by 15th of each month.

ACE LIGHTING

Wholesale
lighting specialists
www.ancelighting.com.au

Specialists in energy saving lighting including LED's, Energy reduced down lights, and all domestic & commercial lighting

9499 4111
0418 300 780
334 Darebin Rd Fairfield

Successful Fundraiser

The Bronowski Institute would like to thank all those involved in its fundraiser in Macedon on March 20. Nearly \$5000 was raised to assist the Bronowski Institute in its research into Parkinson's Disease.

Comedian Oliver Clark hosted the evening, and guests were entertained by covers band Stand and Deliver, and a lively auction of items which had been donated by a large number of various businesses. Bidding was also keen in the silent auction. The delicious food was provided by Frank Gorlitz of Schatzi's in Woodend.

The Bronowski Institute of Behavioural Science is non-profit research organisation based in Kyneton and Woodend. Its director, Dr Greg Willis, has been dedicated to researching Parkinson's Disease for 19 years. One of the Institute's most significant discoveries is that Parkinson's Disease is a disease of the retina. Scientists at the Institute have made major progress in developing new treatments from the retina and can greatly improve the quality of life of sufferers of this disease. The organisation does not receive government funding and constantly requires funds to continue its research and to help more people. For further information or to make a donation contact Dr Willis on 0411514980 or email director@bronowski.org.

submitted by Jane Holth

Lachlan Fleming CONSTRUCTIONS PTY LTD

SERVICING THE MACEDON RANGES

EXTENSIONS RENOVATIONS NEW HOMES



REGISTERED
Building Practitioner



**Master
Builder**

0401 499 898

Regular business card advertisements (90mm x 55mm) are \$45 inc GST per month - book & pay 11 months and get 10% off.

Martin Beaumont

PHONE 03 5427 4478
MOBILE 0414 274 988
HTTP www.magneticwebsites.com.au
EMAIL martin@magneticwebsites.com.au

Developing websites for the Macedon Ranges and beyond, ask how we can help you get online

Zulya & The Children Of The Underground

“Zulya and ‘The Children of the Underground’ offer a musical dish that audiences in the region can have the pleasure of tasting at the Malmsbury Town Hall.

Macedon Ranges Cultural Development Unit Team Leader, Robyn Till said that “if there is any one thing that strikes you about this band it would have to be Zulya’s sublime singing.”

“Zulya Kamalova grew up in the Russian town of Sarapul with Tartar parents, the Tartars being culturally and linguistically distinct from Russians. After studying English and French she moved to Hobart in 1991 to work as a translator. She rediscovered her love of folk music whilst living in Tasmania. A short sojourn dabbling in music from a variety of cultures and styles heightened her awareness of her own cultural roots. Zulya then very successfully began writing, performing and recording her own compositions.

Zulya’s singing voice is but one jewel amongst the many treasures on offer here. The members of ‘The Children of the Underground’ exercise astonishing empathy for her compositions. This diverse and talented collection of established musicians is based in Melbourne and comprise Anthony Schulz on piano accordion, Lucas Michailidis on guitar, Justin Marshall on drums, and Andrew Tanner on double bass. In the one night the band can drift comfortably from moody folk love songs to tragicomic circus to lullabies and tangos and around to funky ska or ballads.

A musical night out where people will be encouraged to wear costume and bring Russian food to share

Saturday 14th of May at the Malmsbury Town Hall, Mollison St, Malmsbury Seating: Cabaret

BYO drinks & nibbles Tickest from Shire offices



LEADING HAND CARPENTRY
COMPLETE BUILDING SOLUTIONS

Call 0439 360 896 or email
shannon@lhcarpentry.com.au



REGISTERED
Building Practitioner



ZUMSTEIN



**DESIGNER AND MAKER OF FINE
FURNITURE AND JOINERY**

“Third generation woodwork really shows”



Zumstein Pty Ltd
 Factory 1/32 Brooke Street
 WOODEND VIC 3442
 Ph 03 5427 4579
 Fax 03 5427 2284
 Mobile 0412 138 364

Regular business card advertisements (90mm x 55mm) are \$45 inc GST per month - book & pay 11 months and get 10% off.

WOODEND

NURSERY &

GARDEN SUPPLIES

OPEN 7 DAYS

“LOCAL KNOWLEDGE FOR LOCAL CONDITIONS”

36 URQUHART ST, WOODEND

Tel: 5427 1866 Mobile: 0428 271 866

Full range of garden & landscape needs

Rock, Soil, Sands, Sleepers

Bobcat hire

Chiropractor – Mark Brown

- 20 years in Practice.
- Upstairs at Westpac Bank, 75 High Street
- Muscle realign and stretch techniques
- Gentle spinal adjustments
- Shoulder, elbow, wrist, knee, foot problems
- Headaches, migraines, athsma, neuralgia, digestive problems



Phone 5427 1456 or 0407 526 403

KYNETON EQUIPMENT & PARTY HIRE

FOR ALL YOUR HIRING NEEDS
8-12 BEAUCHAMP ST PHONE (03) 5422 2311
KYNETON VIC 3444 FAX (03) 5422 2930

Email: kynhire@bigpond.net.au
website: www.kynetonhire.com.au

The Wrong Stuff!

It was a simple task, but I was in over my head. One of the items on the grocery list was "Soy"! Problem was I didn't know what kind of Soy my Mother wanted! After searching the aisles and asking the advice of the worker, I grabbed a bottle of "Soy Sauce", placed it in the shopping basket and went on my way! Only after I arrived home and unloaded the bags did I discover that Mum wanted "Soy Milk"! I was sincere in my search, I even asked for help! But it didn't do either Mum or me any good! I had the wrong stuff!

Sadly some people are walking through the grocery store of life with "Heaven" on their list.

But despite their sincerity and the intended "help" of others they grab something that won't get them to Heaven even though it may 'seem' at the time to be the right thing. God's Standard for Heaven requires a totally sinless life. We cannot achieve this standard by "our" Good works. So . . . God has given us a Gift – it is called His amazing grace! It is called "His Work" which He did on the cross when He allowed Jesus to be judged and punished for our sins. This then makes all those who "trust in "His work" Sinless!

And thus able to enter Heaven Jesus said "I am the way the truth and the life. No one comes to the Father except through me! (John 14:6) Many people today believe a 'false hope' that they can "earn" a place in heaven by 'Working at Being Good' or by doing 'good things' – but that's the "wrong stuff" to get to Heaven. Don't be misled! Don't choose the wrong "kind of work" to get you to Heaven. Don't be thinking that it is 'your' Good Works that will get you to Heaven. The truth is we don't get to Heaven by 'Our' good works – but *only* by God's Work!

If you would like to learn more about the Christian Faith you are invited to join us at one of our Sunday Services; one of our fortnightly Life Groups; or simply contact us at our Church office. We would be blessed to be of assistance

Pastor Marilyn Hunter The "Living Word" Christian Church



WOODEND & DISTRICT PODIATRY

John F. Shapland
Resident Practitioner

Reg. Department Veteran's Affairs

5427 2064
Business and After Hours

1895 Mt. Macedon Rd., Woodend

Carlsruhe plans for the future

In April 2008 Carlsruhe residents met at the CFA Fire Station to discuss their vision for the community of Carlsruhe. From this five priorities were identified.

- 1) The redevelopment of the common
- 2) Campaspe walking tracks
- 3) Establishment of the Yelka park
- 4) Establishment of a community facility
- 5) Managing the community Action plan

From this, a committee was formed to develop these plans with meetings held monthly often with a representative from the Macedon Ranges Shire Council present providing direction and information. From these meetings, a vision for the common was developed. In mid 2009 the Shire Council contracted Left Field to develop a master plan. As part of this, Joshua Smith has attended several meetings with the planning group, and with their input, has put together a development plan. The plan is to develop the common as the centre of the community activity, with a Children's play area, BBQ area, information signage, and multiple plantings of trees, Tree-scaping of the streets and signage denoting the township area.

These plans are nearing completion and require input from the community. Whilst a date has not yet been set, residents will be invited to attend and provide feedback

submitted by Margaret Glen

Regular business card advertisements (90mm x 55mm) are \$45 inc GST per month - book & pay 11 months and get 10% off.



Under New Management

New Release + a free Weekly for Overnight \$5
6 weeklies for \$6

NEW DEALS

MAD MONDAYS

\$ 3 New Releases

CHEAP TUESDAYS

\$8 - 2 New Releases + 2 weeklies

Mon – Fri: 11 am – 9 pm

Sat: 10 am – 9 pm

Sun: 12 pm – 8 pm

65 High Street Woodend

Phone: 03 54274011



Fire Restrictions Are Now Over – Now, How Prepared Are You This Winter?

The CFA announced that the Fire Danger Period in the Macedon Ranges officially ended back in March. This means that you are now able to burn off, but obviously please do so with extreme caution. Make sure the area around your fire is well cleared, and that you are also a safe distance from any buildings. Not that long ago we attended one unfortunate fire, where a burn-off was too close to a house and the fire quickly spread to destroy the entire building.

The Fire Danger Period Is Not Over!

The official Summer Fire Danger Period has ended, but that does not mean the fire danger period is over. While we attend most of our bush, grass and scrub fires over the warmer months, the CFA attends more structural fires (such as houses and sheds) in the cooler months. This is the time when people start using their fires, heaters and electric blankets again.

One of our common winter calls is to a chimney fire, where the heat from the fire below has actually ignited ash and debris that is lodged in the chimney. It is therefore wise to regularly check, and even have your chimney or flue cleaned.

Speaking of house fires ... we are now entering the most dangerous part of the year.

Answer these 20 questions.

1. Is there a smoke alarm in your home? Do you test it every month?
2. Do you replace the battery annually or when the low battery alarm activates?
3. Is your house number easy to see so emergency vehicles can find you?
4. Have you placed the emergency phone number beside all your phones?
5. Has your household made and practised a home fire escape plan?
6. Have you planned a safe meeting place outside?
7. Do you have a fire extinguisher in your home?
8. Is your home protected by an electrical safety switch?
9. Are the keys kept in or near exits with deadlocks?
10. Do you always have electrical repairs, alterations or renovations done by a qualified electrician?
11. Do you avoid overloading power points?
12. Are flammable liquids stored away from heaters, hot water service pilot lights and other naked flames?
13. Do you avoid pouring flammable liquids in high risk areas – such as refuelling a lawn mower near a hot water service?
14. Is your electric blanket switched off before you get into bed?
15. Do you always use a fire screen with an open fire?

16. Are heating appliances kept safely away from laundry, curtains and furniture?

17. Are matches and cigarette lighters kept out of the way of children?

18. Do you clean the lint filter of your clothes dryer after each load?

19. Does everyone know the cold water first aid treatment for burns?

20. Is there clear access for CFA trucks to get close to your house – at least 4 metres wide x 4 metres high?

How did you score? Every YES scores a point!

Less than 10 – The potential for fire in your household is dangerously high. You need to be more than fire aware.

10 to 15 – Not bad. But there are still several things you can do to decrease the likelihood of a fire.

16 to 20 – Well done! You are giving yourself the best chance of protecting your life and property from house fire.

The CFA has prepared a special website for winter safety which can be seen at: www.checkyourhotspots.com

A Great 'Good Friday' Collection

Once again, the Woodend and Newham CFA conducted the annual Good Friday collection for the Royal Children's Hospital Appeal throughout the roads, streets and tracks of the area.

A very big thank you to all of the CFA members, family members and friends from both brigades, around 50 in total, who volunteered to doorknock and count, many giving up most of their day, and to the Ladies' Auxiliary for ensuring that all were well fed and watered. And a special thanks to everyone in the Woodend and Newham areas who donated so generously, raising a record of nearly \$10,200 - including \$7,500 for Woodend and \$2,500 for Newham.

A special mention to the McKinnon family who had five members collecting and between them they raised just under \$2,000. Also a big thanks to the Commonwealth Bank in Woodend for the final counting of the money collected, especially all of those 5 cent pieces.

Unfortunately, we were not able to cover every home, and many people were away for the Easter break, so if you still wish to donate, please drop into the Woodend or Newham CFA stations any Sunday morning to 11am with your donation – up to the end of May.

2010 Woodend CFA Annual Dinner

The Woodend Fire Brigade will celebrate our 114th year at the annual dinner on Saturday May 22. If you are a former Woodend CFA member or are interested in attending please see contact details below. We will again be asking local business for some donations as raffle prizes, hopefully you will all be as generous as usual.

For further information contact Captain Mick Christie on 0419 870 601, 1st Lieutenant Mike Dornau on 0409 093 935, call the Woodend CFA on 5427 2356, or visit the station in Urquhart Street. Remember, we're always looking for new members – especially people able to respond during the day.

The Woodend CFA is a volunteer emergency service, committed to Creating a Safer Community.

Submitted by 1st Lieutenant Mike Dornau, Woodend CFA

BGE

Joinery Quality you deserve

• Kitchens • Shop fittings • Bars

BRAD ELSE

Mob: 0412 355 548 Ph: 5422 2571
Factory 2/27 Redesdale Rd., Kyneton

Visit our Showroom 166B Mollison St, Kyneton
11am - 5pm Fridays or by appointment

All news items, articles and community news columns must be received by 15th of each month.

 Total
Financial
Solutions
Australia



*Helping you save
for a
"Rainy Day"*

Bob Nixon

B.Com., Dip.Ed., Dip.A.I.I., Cert. IV Fin. Plng., F.A.F.A.

Authorised Representative,
Total Financial Solutions Australia Pty Ltd
ABN 58 003 636 968 AFSL No.246545.

Shop 10, 34a Hamilton Street. Gisborne Vic 3437

Ph: 03 5428 0123

Fax: 03 5420 7710

E: bobnixon@netcon.net.au

W: www.bobnixon.com.au

The fencin' fella

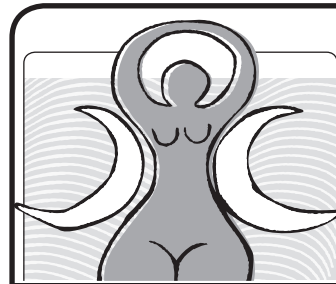
- colorbond
- tubular
- timber
- steel picket
- pool

Mini Earthmoving Kanga Loaders

Attachments include:
rotary hoe, soil leveling bar,
4 in 1 bucket, trenchers,
post hole diggers, tipper

SHAUN BARRON

MOB: 0407 232 900 or 5422 3488 AH



Psychotherapy

Teresa Mallon

0417 864 556

*Dip. of Psychotherapy, Advanced Counselling Skills
- Cainmillier Institute*

Psychotherapy

Hypnotherapy

Dream Analysis

Women's Self Development

Grief Counselling

Life's Journey...

People in regional areas often feel isolated and at a loss of where to turn when life's journey turns a complicated corner. Family and social networks may not be 'around the corner' and people are often left to deal with difficult and life changing decisions on their own. None can be truer than when a marriage falters, and a family unit is torn apart. As I enter another year of my counselling practice I am constantly struck by the devastation this creates on all levels, and how the journey of recovery is essentially one that people need to reach out for.

Most of us begin a journey into a loving relationship which we begin to attach commitment, responsibilities, children, boundaries and even rules. Sometimes this works as two people respect and work through the many layers of these tasks. Unfortunately too often there is a breakdown of the commitment and the couple cannot find a way out of an impending separation.

The original feelings of love diminish and most times fade, sometimes only by one partner, rarely is it mutual.

Children's lives are deeply broken as the relationship between mother and father tear apart. All too often the children sit in the middle of the anger, hurt and frustration of the parents being asked to take sides in what is an already impossible task.

Women are often left to create an income, and this can seem like an impossible task. Even the government works like a collective force saying you are on your own once your youngest child turns 8, as the single parent pension is stopped though not the cost of supporting the child.

I am being very honest and frank about the meaning of divorce because so many people walk this walk and unfortunately too many people do this without support and proper resources.

There are great books available now, yet the biggest need is to talk and work through these difficult times as the healing begins and builds. Through the process of either individual or group therapy you can begin to build from your inner foundations a place to construct a new you, a stronger you.

If you feel that this is something that relates to you or a friend, I am happy to talk further. For further details please contact me, Teresa Mallon on 0417 864 556 for details for individual and group therapy in the Woodend and Castlemaine area.

Rotary says thanks

The Rotary Club of Woodend would like to thank the following businesses for their support of our fundraising luncheon held on the 22nd April.

Blue Orange Concepts, Woodend Bakery Café, New Leaves, Saving Grace, Woodend Newsagency, Glenn's Country Meats, Woodend Fruit Market, Big Shed Winery, Gisborne Peak Winery, Colour Me Cooper & P'rice D'Resistance

Kirsty Nuttall

MACEDON RANGES PICTURE FRAMING SERVICE

By appointment only
Phone/Fax: 5427 3511
Mobile: 0417 337 857

ADVANCED
EQUINE
DENTISTRY



Dr Shannon Lee BVSc

0418 598 621

we
come to
YOU!

Winner 2009 Macedon Ranges Business
Excellence Awards for Young Business Person &
Professional Services categories

Mobile services for Macedon Ranges
www.advancedequinedentistry.com.au

"Magnificent" Art MAD Gallery & Café

19 High Street, Lancefield
Tel: 5429 1432

Web: www.madgallery.com.au

Open everyday 10am – 5pm
We're proud of our coffee and promise you
the best coffee around, or your money back!



kitchen cook table home
Blue Orange Concepts

GREAT RANGE OF MOTHER'S DAY GIFTS

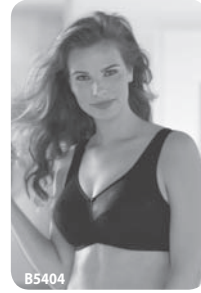
Not sure what she'll like?
Gift Certificates are the perfect solution

Shop 2 130 High Street, Woodend 3442
Telephone 03 5427 4500



bodywise
UNDERWEAR
comfort for women ... everyday

Next to Woodend Post Office
www.bodywise.com.au
1300 66 17 66



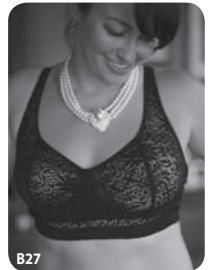
**Wire-free bras, briefs & more ... everyday comfort
for women of all ages and stages ...**

Bras in sizes 10 to 28, cup sizes A to I (depending on brand and style).

Fittings by appointment Mon–Fri 9-4.30 & Sat 9-12.

Beautiful hand-made soaps and skincare products by Est Australia.

Gifts and Gift Vouchers for Mums & women of all ages.



10% off garments on presentation of this ad (until 8/5/10)

Bodywise Underwear

Wire-free bras, briefs & more ... everyday comfort for women of all ages and stages ...

Bodywise Underwear strives to help women of all shapes and sizes find a comfortable bra to suit their lifestyle. Feel confident in your clothing, without under-wires!

Bodywise designs its own brand of comfortable bras which have no wires and no fastenings at the back. Simply pull on over your head like a crop top or step into the bra like a pair of stockings. Whether maternity, everyday or lace, there are styles to suit sizes 10 to 22 in cups A to F. The addition of the Anita brand from Europe in everyday, maternity and sports bras, extends the range of sizes on offer to size 28 and up to cup size I (depending on style).

Bodywise aims to make fitting and purchasing a comfortable bra an uplifting experience with the best possible outcome being a bra that you don't want to rip off the minute you get home. It's a bit like wearing slippers in a world of stilettos!

Visit our showroom at Shop 19, 130 High Street Woodend (next to new Post Office), for a free fitting by appointment, online at www.bodywise.com.au or phone 5427 1895 for more information.



EpiGenetics

– Healthy & Ageless Naturally
Epi Genetics @ Top of the Range

- Hypno-therapies
 - Addictions-Weight-Pain-Anxiety
- Massage
 - Relaxation-Hot Rocks-Neuro Muscular
- Swiss Skincare
 - Facials-Detox Foot Spa-Makeovers
- Cellular Nutrition
 - Detox-Regenerate-Energise
- Guaranteed Programs
 - FREE Information Consultation

MAY SPECIAL

Enjoy a massage and enter the monthly draw for a FREE Lunch (value \$50)
BOOK NOW
www.epigenetics.com.au
0419 878 836



Top of the Range
Mt Macedon
Cafe & Gallery

Start Your Day on Top
• Open Seven Days •
10am - 4pm

- NOW Fully Licensed-Wines by the Glass
- Fresh Baked Cakes- Baked In-house Daily
 - Clubs & Buses Welcome – Bookings Essential

Enjoy a weekday lunch and enter the monthly draw for a FREE Massage

CALL TODAY
54273466
Disabled Access and Facilities

Food For Thought – And A Better Life

The Woodend Auxiliary of the Kyneton Hospital is gradually diminishing in numbers, and increasing in age. However, we still sell our raffle tickets, and occasionally hold a small fundraising function.

The Mothers' Day raffle will be well under way by the time you read this, with only a week left to buy tickets to win a superb canteen of cutlery, or the second prize of a "Mum's Hamper".

In June we will be inviting you all to come to the RSL Hall in Anslow St for a talk by the Dietitian from Brooke St Medical Centre. Annie Barry

All news items, articles and community news columns must be received by 15th of each month.

WARNER'S JEWELLERS
EST. 1912 ~ 4th Generation Jewellers

Manufacturing Jewellers Watch & Clock Repairs
Jewellery Repairs Valuations & Rethreading

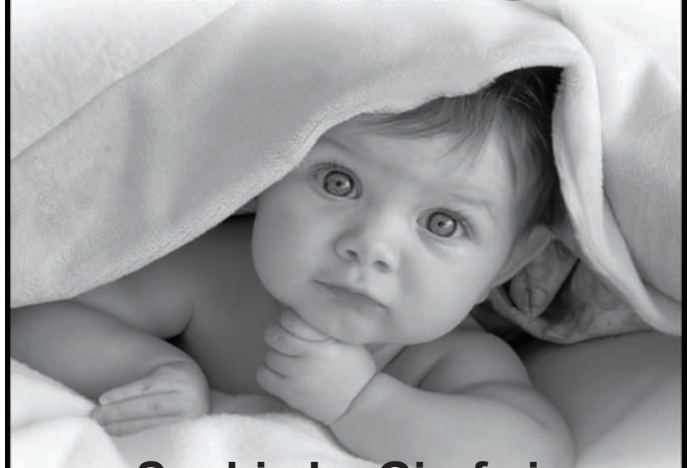
Beautiful selection of

PANDORA™
Life has its moments ... make them all unforgettable

97 High Street, Woodend

5427 1573

WHAT'S NEW AT ZAPPA-DO



Sophie La Girafe is my new bestest friend

Sophie La Girafe has arrived at Zappa-do. The world famous hand-made 100% natural teething toy from Paris. Slender, flexible, soft, lightweight and easy to grip by little hands. Squeeze and chew in safety. Stimulates the senses and soothes the gums at the same time. Come in and meet her for yourself. Just one of the great new products at Zappa-do.

ZAPPA-do Baby and You!
Shop 3, 87 High Street, Woodend. Ph: 5427 1270
or visit our new website at: www.zappado.com.au

Woodend Landcare News

Funds have been received from the Catchment Management Authority to have a sign made and erected on the new walking track, south side of the Creek, leading from the Children's Park to Bowen St. There will also be, in conjunction with the Visitor Information Centre, an interpretive map of the Creek and its tracks.. Also from the CMA, funds to pay a contractor to get rid of as many as possible of the reshooting willows that are clogging up the Creek in several places. This work has commenced, but won't be completed until November due to seasonal conditions.

The Quarry Rd work group is busy every Thursday morning improving the amenity of the area along the road and rail reserves of Quarry Rd, Bowen St, and Sullivan's Rd. New people continue to enroll to make a contribution, some large, some small, but ALL welcome.

The Five Mile Creek working bees are held on the fourth Sunday of the month (except in April, when the fourth Sunday turned out to be Anzac Day!). Heaps of manual work, by people from nine years old to - well let's just say that some of us are a lot older than that! - has made a big difference at several of our sites. Also, several individuals and families have "adopted" sites and will be caring for them regularly. Will you join in? The Creek needs you!

Contact Jo, phone 5427 1909,
or by e-mail at rasbooks@netcon.net.au for info.

All local groups, clubs and committees are invited to submit articles for publication. Submissions must be received by the 15th of every month email to: sales@collierooffice.com.au

Volunteer Wanted!

Woodend Poster Run

- Do you have an interest in the arts?
- Do you have 2 hours a month to spare?
- Are you sociable?
- Would you like to see shows at the Kyneton Town Hall for free?

If you answer yes to all the above contact Sarah at Woodend Neighbourhood Centre on 5427 1845



Grantra
HOME IMPROVEMENTS
Specialising in Bathroom Renovations
PO Box 736, Woodend 3442
0418 175 877
www.grantrahomeimprovements.com.au

Master Builder
REGISTERED Building Practitioner

WOODEND SELF STORAGE (Vic) Pty Ltd



- Store your business documents, stocks or furniture
- 7 day access
- 33 individual sheds
- Affordable prices
- Insurance available

For any enquiries
please contact
Leonie or Dennis Barker
on **5427 4175**

THE WATER BLOKE Water Saving Solutions

The Water Bloke Specialises in

- Rainwater Tank Installations,
- Tank To Toilet connections,
- Grey Water Recycling,
- Septic Systems
- Garden Reticulation.

We're based in Woodend, so call us for a free consultation and Water Audit of your home.

BEAT THE DROUGHT THIS SUMMER and Contact us at www.thewaterbloke.com.au or on thewaterbloke@gmail.com

Contact Craig (author of the best selling book "Every Last Drop: The Water Saving Guide") on 1300 650 947 or 0410 275 714



"for all your water needs"

Heritage Society News

Digging Up History At St. Mary's

On 17th March last, when Geoff Hildebrand set about replacing some damaged floor boards at St. Mary's Church, Woodend, he had not realized that he was about to literally dig up some interesting history. As he removed the floorboards he discovered an old bottle which had been carefully sealed with what appeared to be Plaster of Paris. Through the dust it was possible to see that there was something inside. What could it be?

Fr. Andrew Covington, who is currently acting locum Priest at St. Mary's, contacted me to help plan the next move. I felt fairly confident in saying that it was unlikely to have been an 'official' time capsule as we have carried out extensive indexing of St. Mary's records and they do not contain any reference to a placement of a bottle to record an event. I suggested however, that given the care that had been taken to seal the bottle, it was very likely that its contents would be of great interest. Perhaps it had been placed there by workmen when the church was being built? We agreed that Fr. Andrew should bring the bottle around to the Local History Centre for the grand opening!

Before we tackled the task, a quick ring to the Conservators at the State Library confirmed that we were well set up for the job. After carefully chipping away the plaster our first discovery was a wad of rolled-up newspaper. Although undated, on closer inspection a small advertisement stated "Commonwealth Military

Forces of Victoria: Headquarters, 3rd Military District. Quotations for Supply of Firewood. Seymour Military Camp. Quotations are invited.....up till 12 O'clock noon, 15th June 1915...." So now we had at least an approximate date, but what else was in the bottle?

With very long tweezers, we had no difficulty in extracting a rolled up piece of paper. Torn from a music manuscript book, the following words were written in pencil: "These alterations were carried out by C. H. Overton Builder on August 24th 1915. Builder Chas H. Overton. Carpenters C. Phillips J.A. Fisher L. H. Overton. Painters W.E Fisher & G. Cole." The paper was in good condition and we quickly made copies to protect the original from any enthusiastic handling.

Our next move was to check our records and ascertain exactly what alteration took place in 1915. Within minutes we had found what we were looking for. in a date- ordered record of St. Mary's history compiled by the late Barney Keating, we found the following entry:

"May 6th 1915. The vestry spent the amount of £125 for renovations of the Church. Making new drains, pointing cracks and joints of exterior and interior faces of wall with cement compo; (was this our 'Plaster of Paris'?) Removing the flooring from whole of the nave and relaying with 41/4" x 7/8" t & g. Crown brand Tasmanian HW. Stripping off the old dados and constructing mill dressed Californian pine Dados around nave and Chancel. Dados lined the full height with 3/4" Cal. Pine panels covered with 1/2" cover strips." The details continue, too long to include here.

So 95 years later, this fascinating record is unearthed! Charles Hector Overton was an active builder at the time. We cannot help wondering if there are more bottles waiting to be discovered in some of the other buildings he worked on. He, or perhaps it was one of his workmen, obviously had a sense of history. In the meantime, perhaps it would be a good move to re-inter another bottle containing a record of this discovery and adding new information for future generations to discover!

(For a more detailed account of this discovery and the men who undertook the 1915 renovations, see the upcoming edition of "Heritage News". "Heritage News" is sent to all members of the W&DHS).

submitted by Janet Hawkins

Bradley's

Curtains + Blinds showroom now open

Mon to Fri 9 - 5.30 + Sat 10 - 1



t 5427 2361 fx 5427 1019 72 High Street, Woodend VIC 3442

www.bradleyscurtains.com

FREE CAR REMOVAL

Servicing the Macedon Ranges
Phone Mick: 0430 446 605

Cambodian Kids Foundation Sponsorship

Yeang Thy is one of hundreds of children that are in need of sponsorship. Yeang is nine and lives in Mous village, Kompong Thom. Yeang is a lovely child, she is very close to her siblings, two girls and one boy. Yeang's parents separated three years ago and now Yeang and her siblings all live with their mum. In order to support her family Yeang's mum must work 6am to 6pm everyday, Yeang has never had the opportunity to attend school as her mum cannot afford to pay for it. The Saing Sy Centre will change this by offering her the opportunity to an education and a great start to her future. You can make a difference in Yeang's life by sponsoring her, your monthly contribution will give Yeang more opportunities than she has ever dreamed of. If you are interested in sponsoring Yeang, or another child, contact emily@cambodiankidsfoundation.com



TRADE & SERVICE DIRECTORY

AIR CONDITIONING

SPLIT SYSTEMS INSTALLATION AND SALES

Efficient heating & cooling
For free quote, phone Dave
DW Air 0407 248 454

BUILDER

Mark McCartney
Baiaame Nominees Pty Ltd

Period & Modern
Construction
Kitchens, Bathrooms,
Renovations, Decks, Pergolas,
Home Maintenance,
Complete Project Management

Phone: 0411 555 925
E-mail: baiaame1@optusnet.com.au

ELECTRICIAN



All types of electrical work
Kyneton, Woodend & surrounding districts
"no job too big or small"
Travis Brown 0400 035 442
P: 5422 2568 F: 5422 6908

EXCAVATIONS

Bobcat & Excavating
Truck & Trailer
Handyman Services
Garden Design
Mowing
Fencing



Robert

0401 605 488

EXCAVATIONS

Cheap'n'Neat Excavations

Bobcat/Excavator/12m Tipper hire
Post hole digger
Rubbish removal
Free Quotes
Contact Les 0418 556 634

HANDYMAN

Rowdy's Handyman Services

Home & Garden Maintenance
No Job Too Small!

- Carpentry,
- Plastering,
- Tiling
- Painting



P 5427 0072
M 0416 274 732

JEWELLERY

Jude's Preloved Costume Jewellery

Vintage & modern pieces



View by appointment or arrange a
jewellery party with friends at your home.
Contact Jude on 5427 1352

MASSAGE THERAPY

mg mobile massage

- Deep tissue • remedial •
- sports • pregnancy •

Weddings Workplace
Corporate Private
Call Mark
0407 223 443

PAINTING

GEE'S
Painting etc.



Call Steven

0402 079 482

PSYCHOLOGIST

Sam Luxemburg

Registered Psychologist

- Personal Counselling in Woodend & Romsey (Medicare rebate available)
- Counselling Training
- Myers-Briggs personality testing

Phone: 0428 270 401
www.luxcollege.com.au

SPACE AVAILABLE

Space is still available
in the Trades Section.

Great exposure at just
\$30 per issue.

Call Alexia for further information 5427 3092

TRADE & SERVICE DIRECTORY

ANIMAL CARE



Macedon Ranges Pet Care
An alternative to kennels & catteries
A reliable home care service for pets & farm animals, servicing the Macedon Ranges since 2003
Phone Judy on 5427 1352

ANIMAL CARE



DIANNE'S PET SITTING SERVICE
Your pets lovingly cared for in their own home
Woodend and Macedon
Phone: 0419 326 281
E-mail: dianne@woodendpetsitting.com
Web: woodendpetsitting.com

BOOKKEEPING

BEV ROBERTS
BOOKKEEPING SERVICE

5427 3372
0425 134 940
roberts_bev@aapt.net.au



COUNSELLING



Phone: 0417 011 300
Email: kezallan@ozemail.com.au

COUNSELLOR

Grief & Loss
Trauma
Stress, anxiety & depression
Anger management
Workplace issues
Behavioural problems

DRESSMAKER

Beryl's Tailoring



DRESSMAKING, ALTERATIONS,
BRIDAL, EVENING & DAY WEAR,
LADIES AND MEN'S REPAIRS

Beryl Bachelor
QUALIFIED DRESSMAKER, NEWHAM

By APPOINTMENT ONLY
MON TO FRI 9 - 5

5427 0568 0418 510 179

ELECTRICIAN

Macedon Ranges
Electrics

REC 17836



5422 2182

Split System Air Conditioning
Television/Data/Antenna

All Electrical Installations

Contact Dan McCarthy 041754 2235

31 Redesdale Rd Kyneton



EQUINE SPORTS THERAPY

EasyCare Hoof Boots



Barefoot & Freeform Treeless saddles

Hepburn Equine Sports Therapy
Woodend www.hest.com.au 0419 326 281

FIREWOOD

O'Callaghan Bros

REDGUM FIREWOOD SUPPLIERS

**SPLIT RED GUM
FIREWOOD**

Excellent Quality Delivered Dirt Free
Ph 7 days

0407 036 800 0429 957 091

GARDEN MAINTENANCE

*Garden Restoration
& Maintenance.*

*Excellent rate and
outstanding work ethic
Creative flair*

Call Damian 0407 697 333

HOME MAINTENANCE

Home maintenance & landscaping
service including decking,
pergolas, carpentry & painting.

Stuart 0409 150 629

AH 5427 2465

METAL GATES

BVM Metalcraft

SPECIALIZING IN OLD WORLD AND
MODERN STYLE GATES

STEEL BALUSTRATING INCLUDING STAINLESS STEEL

ROPE AND WROUGHT IRON, PUNCHED RAIL FENCING

ALL MATERIALS USED ARE

GALVANIZED OR ZINC PLATED

FINISHED IN YOUR CHOICE OF POWDERCOAT

OUR DESIGN OR YOURS

METAL POLISHING - ALLOYS, BRASS, STAINLESS STEEL

CONTACT BEN 0422 288 768

FOR A FREE QUOTE

PAINTING

**BD CROSBIE
PAINTING**

Ben T: 5427 2164
M: 0431 205 576

Household & Commercial
Interiors & Exteriors
Painting, Staining & Oiling
Decking, Stairs & Hand Rails
Free Quotes

STONELAYING & PAVING



Stonemason & Paver
specialising in

- Retaining Walls
- Drystone Walls
- Stone Houses
- Paving
- Over 20 years' experience

Cameron Dunn

Ph (03) 5427 4778 Mob 0429 162 589

TREE SERVICES



- tree pruning / removal • stump removal
- tree planting / transplanting • rope & harness climbing
- confined space removal • fully insured

Professional commercial & residential tree maintenance
all work carried out by qualified arborist

Call Anthony 0417 059 969

WRITING SERVICES

a few good
WORDS

Editorials, Publicity, Advertising, Proof-reading, Letters.

Nadine Hartnett
Freelance Writer

0439 399 838
nhartnet@blapond.net.au

SPORTS NEWS

No contributions for this month's Sports page. If you are part of a Sporting group please send your articles in, and share your progress with the rest of the community.



REGISTERED BUILDING PRACTITIONER (Est. 1992)

SPECIALISING IN:

- Renovations & Specialist Carpentry Work
- Heritage Building
- Pergolas & Decks
- All General Home Maintenance
- Prompt & Reliable Service
- 10 years based in macedon ranges & surrounds

For a free estimate phone Darren - 0438 756 231/5427 2215

Do you know how many chemicals you could be eating?

Do you know where, and more importantly, how your fruit and vegetables are grown? All our fresh produce are Australian grown with no chemical sprays, artificial fertilisers or genetically modified materials, **just as nature intended.**

Nature's Garden Organic Produce is guaranteed Australian grown and 100% certified organic.

Call in and see our extensive 100% organic range at Shop 4A Collier St, Woodend (cnr Anslow St) or call 5427 4406

www.naturesgarden.com.au



Welcome to the Woodend Star Kids Club May Birthdays

1st	Charlie Pace	Turns 4
6th	Jamie Staresina	Turns 10
6th	Sarah Meacham	Turns 13
7th	Nicola Fitzgerald	Turns 12
9th	Tyrone Hinsley Hargreaves	Turns 7
9th	Jessica Louise Thorne	Turns 8
10th	Jett Sanders	Turns 5
26th	Jamieson Simpson	Turns 5

Happy Birthday Everyone!

JOIN THE WOODEND STAR KIDS CLUB

Fill in your details below and place in the drop-boxes. Age limit is restricted to 13 years old. Must be resident of 3442 postcode.

Full name: _____

Address: _____

Date of Birth: _____ Age: _____

Phone: _____

Parent/Guardian

Signature: _____

You can collect your birthday surprise by visiting Collier Office & Business Assist in the 19th Hole shopping centre

Sponsored by:



Collier Office
and Business Assist



Woodend Health & Fitness

- Wide range of equipment
- Group fitness classes available
- Teen's Gym sessions available
- Personal training available

Start your fitness campaign today

30 Wood Street, Woodend

Phone Brian on 5427 1181 or 0488 016 709

The New Woodend Star aims to provide a voice for Woodend residents, Community groups and Businesses. Editorial and publicity for community events is free, and all other contributions or business advertisements are most welcome.