

# THE NEW WOODEND STAR



Circulation of 3190 throughout  
Woodend postal district, Newham, Heskett, Ashbourne,  
North Woodend, Hanging Rock, Carlsruhe, Cobaw.

**AN INITIATIVE OF THE ROTARY CLUB OF WOODEND**

April 2010

A Monthly Community Periodical

First Publication 1997

Volume Fourteen No.3



## Celebrating Autumn at The Woodend Carnival

How many reasons would you like? It usually doesn't take too many to entice locals to join the fun at the Woodend Carnival. As it's grown from a small school fete to the massive family event that it now is, The Woodend Carnival is hosted by St Ambrose School and Parish and attracts interest from many corners of the Shire for many reasons.

The best young talent will again be showcased with another staging of Woodend Idol. Last year's winner, Jess McKinnon, will be playing at the carnival again this year and judging this year's round of Woodend Idol. She won 6 hours of recording time with Sound Vault, which spurred her on to record a CD. As a musician it was a massive confidence boost for Jess and she has played many gigs since her win. Some voluntary and some paid for.

Other carnival attractions include the usual array of children's rides and attractions and will operate on a ticket or wristband system. Little kids' favourites are back, the Jumping castle and train rides - as well as plant stalls, cake stalls, spinning wheel, auctions, fresh and home made produce, trash & treasure and more.

The carnival cafe will be serving delicious homemade snacks, cakes, pies and Devonshire teas. Outside, the regulars will be manning the BBQ and drinks tents, possibly right next to the fairy floss cart. Goes so well with a burger!

There will be some community groups with their displays, including the CFA, Police and Edgars Mission animal farm.

So do come and be part of your community at the carnival on Saturday 17th April. It's also a good chance to inspect the new school building.

Enquiries can be made through St Ambrose on 5427-1285, or Anne-Louise Lindner, carnival committee president on 5427-3056.

## Scouting out Canoes

On a perfect Autumn day last Sunday, twenty Scouts from 1st Woodend took to the water at Nursery Lake, Macedon. They were introduced to canoeing under the expert guidance of Ron Keehner, the Gisborne-based Scout Water Activity Leader.

Scouts wishing to further their canoeing experience can attend Scout-run participant courses which cover the different types of strokes, capsizing and rescue as well as a 3-hour paddle along the Maribyrong. This will qualify them to attend overnight canoeing and camping tours - paddling along the Yarra and other rivers.

As well as canoeing, other scout activities planned this year include mountain biking, environment, hiking, survival skills and bush billy-cart racing.

Scouting is currently undergoing a tremendous growth and is a great way for children to get outdoors and learn many valuable life skills while having fun along the way! A new Joey Mob for 6-7 year olds will be commencing in Term 3 this year.

If you and your family are interested in finding out more about the 1st Woodend Scout Group, please contact Jenny Johnson, Group Leader on 5427 4968.

Scouting is open to all boys and girls from 6 to 26: Joys 6-8, Cubs 8-11, Scouts 11-15, Venturers 15-18, Rovers 18-26



## Fire Danger Period is now over

Recent heavy rains and cooler weather has prompted CFA Region 14 to declare an early end to the Fire Danger Period ("fire restrictions") for the Macedon Ranges. The Fire Danger Period ended at 1am on Monday 22 March 2010. See page 27 for more information .



## New Members

### The Rotary Club of Woodend

Put something back into this great community and be part of a worldwide organisation that helps build goodwill and peace allowing ordinary people to achieve extraordinary things and bring about exceptional change in the world.

Contact Brendan 5422 6442

## The New Woodend Star

An initiative of the Rotary Club of Woodend Inc.  
The Bank, 75 High Street, Woodend, Vic. 3442  
ABN 32 685 225 161 No. A0021518E

Layout & printing by Collier Office & Business Assist

For people wishing to submit articles simply place the information in the strategically placed drop-boxes. These are located at the Liquor Shop, Collier Office & Business Assist, The Bank @ 75 High Street and Woodend Newsagency.

**EMAIL articles preferred: sales@collieroffice.com.au**

**Circulation: 3190 copies throughout Woodend and district.**

Disclaimer: Articles and comments published in this newspaper are the result of contributions from local groups and relevant news articles pertinent to the Woodend district. Neither the Rotary Club of Woodend Inc., The New Woodend Star nor the editorial team are liable for any mistakes, omissions, or misprints. It prints and makes no representation as to the truth or accuracy of any description, and accepts no liability for any loss suffered by any person who relies on any statement contained herein. The opinions expressed are not necessarily those of the editorial team. The committee reserves the right to omit, reject, cut, alter or otherwise re-work submitted articles to make them suitable.

Committee: Barry Napthine, Ivor Johnson, Claudia Green, Brendan Watters, Alexia Downie, Joy Barker, Sue Macklin & Jane Watters

**Closing date for inclusion of articles or advertising for each issue is the 15th of the month prior to publication**

### Information for advertisers

All rates include GST & are priced per month.

Business card (55mm x 90mm) ..... \$45 inc GST  
Trade Page ..... \$30 inc GST  
Quarter page (90mm x 134mm)..... \$95 inc GST  
Half page (134mm x 190mm)..... \$170 inc GST  
Full page (190mm x 277mm) ..... \$295 inc GST  
Insert (of your printed brochure)..... \$210 inc GST

Advertisers: Please note - it is in your interest to book and pay for a year in advance, as a 10% discount applies to any full year pre-paid booking. Any existing pre-paid ads will revert to the new rate on completion of the pre-paid period.

Advertising bookings to be made with Alexia Downie on 5427 3092 or sales@collieroffice.com.au.

Accounts queries can be made to Sue on 5427 4089 during office hours or nws@johnsonwoodend.com.au  
Mail should be directed to: New Woodend Star, C/- The Bank, 75 High Street, Woodend 3442.

### Woodend Star Publication Dates for 2010

May	3rd May	September	30th August
June	31st May	October	27th September
July	28th June	November	25th October
August	1st August	Dec/Jan	29th November

Changes to advertisements, new advertisements or cancellations must all be made by email or in writing. All advertisements will be placed and charged for until notified otherwise.

### SUBSCRIBE TO THE NEW WOODEND STAR

Do you live outside the New Woodend Star distribution area? Be sure to receive your copy every month by subscribing. A yearly subscription of 11 issues is just \$27.50. Post to New Woodend Star, C/- The Bank, 75 High Street, Woodend 3442.

Name: \_\_\_\_\_

Address: \_\_\_\_\_

Phone: \_\_\_\_\_ Enclosed: Cheque/Money Order for \$27.50

# ANZAC DAY

WOODEND MORNING SERVICE

March starts at 11.30am

from High Street East

Service at 11.45am

RSL Hall Anslow Street



## Rug up for the Mt Macedon ANZAC Dawn Service

The annual ANZAC Day dawn service will be held on Sunday 25th April at Mt Macedon. Access has been boosted by the construction of 200 additional car parking spaces, the next stage of improvements following the completion of disability access works last year.

Chairman of the committee, Vietnam Veteran Frank Donovan said the event has been growing in participation and stature each year. While the service begins at 6am, he urged locals to get there by 5.40am and rug up for the possibility of cool weather. Buses to the service will be available from the Woodend RSL, to book please call Reg Till on 0427 187 836.

## Joanne Duncan

STATE MEMBER FOR MACEDON MP



Friends,

At the heart of good governance is honesty & accountability, as well as an understanding of the issues confronting the whole of society.

If you have any concerns you wish to raise, please do so.

Feel free to call me on:

**5428 2138**

### ANZAC DAY A day Of Remembrance

Anzac Day - 25 April - is probably Australia's most important national occasion. It marks the anniversary of the first major military action fought by Australian and New Zealand forces during the First World War.

ANZAC Day holds a special place for so many Victorians, each year providing the opportunity for us all to remember and learn more about the sacrifices made by our veterans and to keep their memory alive in our community.

It has been a pleasure over the past years to attend the Dawn Service at Mt Macedon and around Macedon electorate. Each year the attendances at these services grows and I would urge anyone that hasn't yet been to an Anzac Day memorial service to show your appreciation of the contribution of Australian men and women to maintaining the principles of freedom and democracy by attending either the Dawn Service or a service in your town this year

# Woodend Winter Arts Festival

## Festival program now available

The 6TH annual Woodend Winter Arts Festival launched its 2010 program announcing the festival program that encompasses a wonderful mix of music, art, literature and children's activities, on the Queen's Birthday Weekend, Friday June 11 to Monday, June 14.

Officially opened by Arts Minister Peter Bachelor, he said, "The Woodend Winter Arts Festival is a great reason to visit this extraordinary part of Victoria. The Program is incredibly eclectic, embracing both traditional and modern art forms."

Coming exclusively from Vienna, the Koehne Quartet will be one of many highlights of the Festival, with a performance of Schumann classics, in his anniversary year, on the 14 June. On Friday 11 June at 7:30pm a fireworks display will announce the festivities followed by a dazzling jazz concert by the much loved and talented pianist Joe Chindamo.

For the classical music lovers, there are two full days of recitals including Melbourne's own Freshwater Trio, Green Room awarded Counter-tenor Tobias Cole singing with Accademia Arcadia (coming together since their performance in Victorian Opera's Xerxes 2009), pianist Nan Tsien Chou playing a selection of Chopin pieces on a historic piano, percussionist Clare Edwardes, tenor duo of twin brothers Daniel and Matthew Thompson, as well as a performance celebrating Monteverdi's anniversary with the Monteverdi Vespers by Ensemble Gombert and Accademia Arcadia.

In this year's literary program is the much requested return of poet Robyn Rowland, an intimate author session with fictional writer and essayist Nicholas Rothwell, a poetry slam by young poet Emilie Zoey Barker and a

conversation between Mary Delahunty and freelance documentary film maker Kim Traill. Another highlight is an exhibition of photographs by national treasure Barry Jones to be housed at Duneira on Mt Macedon.

Political cartoons are hardly ever put on show, but the festival has been able to bring together a panel of political cartoonists – Neil Matterson (The Sunday Mail – Brisbane), John Spooner (The Age), Matt Golding (The Sunday Age) and Geoff Hook (formerly Sunday Herald Sun) – to discuss the pleasures and pain of transcribing the days' news and events into a succinct cartoon or illustrative comment. Alongside this there is an exhibition of a selection of Neil Matterson's cartoons and a Children's workshop on drawing cartoons taken by Matterson himself.

The ever flourishing children's program includes an adaptation of the Glugs of Gosh, Wadaiko Rindo Japanese Drumming Performance and Workshop, youth author Leigh Hobbs as well as a Junior Poetry Slam for kids!

Tickets range from free to \$45. Bookings and details, visit [www.woodendwinterartsfestival.org.au](http://www.woodendwinterartsfestival.org.au), or collect a program from Tourist Information for phone & mail bookings



**DRIVING SCHOOL**

Fully accredited, licensed instructors  
Manual or Automatic  
Gift Vouchers Available  
Serving the Macedon Ranges & Sunbury

Call Frank 0417 014 450

## Woodend Rainfall Report 2010

Each month we add the rainfall details and the year to date total. Our rainfall report shows, **2005, 2006 2007 2008 2009 and 2010** comparisons. Please note that your own rainfall readings may not exactly match these. The New Woodend Star apologises for the inaccuracies in last month's reporting of the rainfall recordings.

	2005	2006	2007	2008	2009	2010	
January	47.4	49.8	83.5	17.1	0.08*	54*	Jan
February	72.2	53.1	27.4	22.1	2.5*	71.5*	Feb
March	5.8	20.6	35.7	25.4	42.5*		Mar
April	18.8	46.4	20.2	20.4	51*		April
May	13.6	58.8	95.7	43.7	30.5*		May
June	116.7	36.0	105.1	88.7	66.5*		June
July	76.9	91.6	83.3	112.5	76.5*		July
August	125.0	30.8	34.8	52.2	107.5*		Aug
Sept	55.2	50.6	49.8	42.0*	88.5*		Sept
Oct	49.8	5.2	12.1	13.0*	46*		Oct
Nov	72.4	13.0	91.0	67.2	99*		Nov
Dec	40.0	31.0	101.2	96.0*	60*		Dec
<b>YTD:</b>	<b>693.8</b>	<b>486.9</b>	<b>739.8</b>	<b>600.3</b>	<b>670.5</b>	<b>125.5</b>	<b>YTD</b>

### Reminder: We are now on Stage 3A water restrictions.

Figures for 2008, 2009 & 2010 include information from a different location indicated by \*.

For the year of 2009 there was rainfall of

**670.5mm**

1 inch = 25.4 mm therefore the total year to date is 26.39 inches



**COMPUTER SERVICE**

Sales - Service - Training & Help

THE BANK - OFFICE 3 - 75 HIGH ST WOODEND  
**JASON JOHNSON - 0400528129**  
[pcs@live.com.au](mailto:pcs@live.com.au)



**24sevenalarms.com.au**

24 Seven Alarms Aust Pty Ltd

- Alarms installed, Serviced and Monitored
- Data cabling and phone line installation
- Medical Alert Systems
- Access Control Systems PSBL: 732-083-90s
- Digital Video Surveillance CCTV packages: domestic and commercial

1800 247 111/ 03 5427 4411  
[sales@24sevenalarms.com.au](mailto:sales@24sevenalarms.com.au)

## Woodend Rocks

The annual Harvest Picnic was held at Hanging Rock on Sunday February 28th with guests welcomed by lovely weather conditions to match the fine food, wine and music on offer.



The Rotary Club of Woodend was there to help raise money for ShelterBox. The new club marquee was used and a ShelterBox set up beside it. The Rotary club raised \$800 for Shelter Box with a lot of interest in the project equipment on display. The Rotary clubs new marquee and signage clearly indicated that the Woodend Rotary club is active within Woodend. It was a great day for showcasing the local area and giving people a taste of life in the Macedon Ranges. Woodend Rocks! Indeed it does!

Pictured above are members and friends of the Rotary Club of Woodend in front of the display and new marquee. From R-L: John Green, Grant Hocking, Melissa Hocking, Miranda Bain and Luke Friedrich.

## Cobaw Community Health –

*Supporting the Health and Wellbeing of Communities in the Macedon Ranges.*

Cobaw State Forest – a ridge of bushland linking Kyneton with the eastern part of the Shire – was the inspiration for the name of the Cobaw Community Health Service (CCHS). Established in 1986, CCHS has grown from the provider of a single program, to an organisation that offers over 30 programs and employs over 80 staff.

Cobaw aims to bring people together to improve the health and wellbeing of people in the Macedon Ranges. The services offered by CCHS are for all members of the community, with programs for people at all ages and stages of life, across the Shire with sites in Romsey, Kyneton, Woodend and Gisborne. Services for families include

- Strengthening Families: Raising children presents challenges of all kinds for all parents. The Family Services program aims to provide a range of services and supports to families with children aged 0-17 that are focused on ensuring the safety and wellbeing of children and young people. Families may face a range of challenges and require support in areas such as: Parenting; Isolation; Family violence; Alcohol and other drugs or Mental health. To access this service please call the Child First Intake toll free on 1800 260338.

- Family Day Care offers an affordable child care option in the homes of registered childcare providers. Our accredited scheme provides high quality care for children that promotes learning and development in the vital early years. For information about any of these services please call us on ph 5421 1666. or visit [www.cobaw.vic.gov.au](http://www.cobaw.vic.gov.au).

page 4

# HOP IN FOR A BARGAIN



JAMIESON with DVD pullouts

200cm wide

\$499



Dove TV unit

78cm wide

\$299



EGG-CITING SPECIALS!

Canton black or grey lowline TV 160cm wide

\$449



Kimberley Rustic Pine with Leadlight doors 220cm wide  
\$699



Tamworth Vic Ash hardwood lowline TV 160cm wide \$799



URBAN CNR TV 98cm wide \$399



## VILLAGE FURNITURE

13-15 Horne Street

SUNBURY

Phone 9744 3333

(from Monday to Saturday)

And NOW AT

90-94 High Street

WOODEND

Phone 54 273 666

(Saturdays & Fridays)

Prices valid until

30/06/2010

Eggzactly what you want.



EGGNORMOUS RANGE OF LOWLINES

## Not a Nurses Bootlace

More interested in helping on the farm than in the house, mum despaired that I'd never be domesticated, and was a little saddened when at 18 I shrieked as she suggested a nursing career. Or any career for that matter.

To her delight and dad's despair, at 25 I left the glitzy office job and - seeking a change of viewpoint - took up nursing. To her dismay and dad's delight, at 26 I gave it up and bought a round the world ticket, deciding the view from the Eiffel Tower might be more appealing than the one I was getting out the hospital window.

Predictably, two years a-roaming saw me and my bedraggled credit card return to find a big house full of empty beds. Re-establishing myself in the top room with 3 souvenir T-shirts, a packet of photos and an Irish accent - though I'm not Irish - I then had to beg the local nursing home for work.

Just when it seemed a settled life and saving money were the order, I took up flying and ran off to a tropical island with a young pilot, and then went back to a glitzy office job. Well. These things happen.

It was at 1, 2 and 3am last week while said pilot was somewhere more exotic than our bathroom, but not as exotic as the Eiffel Tower, that I took time to reflect on this course of events while tending our two vomiting children.

Voted by my peers "Most Likely Never To Work as a Nurse", a weak stomach had been partly the motivator in returning to a calm and ordered office environment, where a family photo can grace the desk, lunch is always at 1, and you don't have to shower anybody before morning tea.

So, as I washed the linen and changed the beds and emptied the bucket and offered sips of water and thinly sliced pieces of apple, the way mum used to do, the words of a past long term grumpy old patient sang playfully in the back of my mind. "YOU!? YOU'RE NOT A NURSES BOOTLACE!"

"Good-Oh" I thought. There's no argument from me!  
By Kathy Mexted

ADVERTISEMENT


**Donna Petrovich MP**  
State Member of Parliament for Northern Victoria Region

*Working for the Woodend Community*

*Your Country Voice*

5782 2011  
84 Sydney Street, Kilmore

Authorised by D Petrovich, 84 Sydney Street, Kilmore.



## Appeal for Assistance

*For Jack Simpson to be present for the Canonisation of Mary MacKillop in Rome. An open letter to the Community*

As some of you will be aware by now, Mary MacKillop's canonisation will take place on October 17th this year in Rome. It would be wonderful for my son Jack to attend this momentous occasion but of course it will cost a considerable amount of money for air fares and accommodation. The Harvest Group, through the Sister's of St Joseph are organizing pilgrimages, which leads me to now appeal to the Woodend Community to sponsor us to attend this once in a lifetime occasion.

It has been a long journey since those dark days in April 1999 when Jack first became ill and how our lives were changed forever. Our family was challenged in so many ways and it has been a real test of our faith and commitment. Some of you have walked every step with us and I feel in my own heart that we need to be there, that this is the end of a chapter of our lives. This event culminates with the recognition that Mary deserves and together we made a difference- we were part of that process.

The miracle of Jack's return towards good health continues, and shows no sign of abating. In the history of human kind there has never been documented evidence of a person who lost his intellectual capacity to then have it regained! Anyone who has experienced the devastation of memory loss or acquired brain damage will understand how significant this is.

Those who read the short story I wrote in 2004 will know ultimately this is a story of hope and the power of prayer, we are the living witnesses to that and that is why it is so important for us to go to Rome. I know many of you have shared our journey and that is why I am hoping that the community will be able to help us now. I have written a full account of Jack's story and once it is published I will be happy to share it with you.

Any support would be gratefully acknowledged and accepted and may be left at Collier Office and Business Assist.

Kindest regards, Sharon Simpson.

STAIRS

DAVID GARRAHAN

FOR MOST STAIRCASE REQUIREMENTS

0408 153 124

**WOODEND**  
**Proud to be Pokie-free**

## Local Scouts "Wow" Rotary

The Rotary Club of Woodend received a special visit by members of the Woodend Scout Troupe last month. Two Scout leaders and 3 scouts came with their parents to tell the club of the recent Jamboree. The group kept the membership entertained with tales of their exploits at the Jamboree held at Cataract Park NSW earlier this year.

Scout leader Roger Neill gave an overview of the Jamboree stating that the Victorian contingent headed up from La Trobe University Melbourne to NSW in eighty eight buses. With all the excitement it was difficult for anyone to sleep for the entire trip.

The size of the jamboree would overwhelm many and even with a brief overview from Roger it was hard to comprehend the enormous planning, preparation and ongoing management of the event. In total there were 10,500 scouts from Australia and overseas along with 2,700 leaders and assistants (usually Rovers). The site had its own hospital, supply warehouse, police service and shopping mall along with a daily newspaper and radio station. Each troop had to set up their camp site with accommodation, dining and kitchen tents. There is a lot of setting up beforehand and cleaning up afterwards with the Jamboree lasting for 12 days.



The scouts Darcy, Emma and Alex provided information on life in the camp and the preparation for attendance. Each scout had to make their own dilly-bag to carry cutlery and plates. They particularly enjoyed all the planned activities on site as well as off site. The highlights included water pistol fights with a twist. Food dye had been added to the water making for a very colourful sight by the end of all the fun. A favourite off site activity was a day visit to a nearby water based theme park. Badge trading was also a good way to meet scouts from other parts of Australia as well as the overseas representatives.

Most days commenced at 6 am and concluded at 11 pm apart from some of the noisier tents keeping people awake. The food was excellent with a special mention of the chicken cacciatore. All scouts received a shirt, large travel bag and backpack amongst many other items to remember the event. Interestingly on the return trip home most of the travelers on the buses were asleep within 10 minutes of leaving the jamboree. This obviously included the leaders.

Scout leader Colleen Dwyer-Gray then finished the presentation by thanking the Woodend Rotary club for its continued support of the 1st Woodend Scout group and in particular for supporting the Jamboree. Each Year Woodend Rotary makes a financial contribution to the local

scout troupe and this year also made a sizable donation to support the jamboree. The scout leaders were obviously kept busy for the entire 12 days of Jamboree. I am sure many who were there with experience of scouting, and many of those without, wished they could be young again and have enjoyed the fun and chaos.

The Woodend community must applaud all the leaders for their continued support of the Scouts, Cubs, Venturer and Rover groups within Woodend and the Macedon Ranges

## Peter Baker & Associates Barristers & Solicitors

Family Law  
Criminal law  
General & Commercial Litigation



**Peter Baker**  
BSC & LLB (MONASH)

**Juliana Smith**  
BM GDLP & LLB (UNE)

**Fran Medina**  
BA LLB

By Appointment at: **27 Urquhart St. Woodend**  
Head Office: 389 Hargreaves St, Bendigo

[info@peterbakerlaw.com.au](mailto:info@peterbakerlaw.com.au)

Ph: 5441 7300 Fax: 5442 4232

**FREE FIRST INTERVIEW\***

\*For advice only matters

## St Mary's Anglican Church

St Mary's Woodend Service times: Weekly, 10.30 am Sunday Eucharist, Includes Sunday School on 2nd, 3rd and 4th Sunday all welcome numbers are growing. Family Service is held 1st Sunday of every month with alternative music and service. All Welcome especially children. Wednesday's 10am Eucharist.

**Paul Groves**

Mobile 0414 928 491

Phone 5427 2171

Computer Sales, Repairs &  
Consulting

Home and Office Networking  
Onsite Repairs and Maintenance  
New Computer Systems

[paul@pcweirdness.com](mailto:paul@pcweirdness.com)

## DIVAS

Thursday 22nd of April at 11.30am at the Kyneton Town Hall with tea, coffee and scones, presented by The Cultural Development Unit

Fresh from the fabulous Judy and Liza Show, Martine Pavey takes us on an unforgettable musical journey relating the lives, the loves, the glitz, the tears and the tantrums in the life of a DIVA. Featuring the songs of world renowned Divas Barbra Streisand, Bette Midler, Shirley Bassey and many more, DIVAS is guaranteed to pack a powerful musical punch with a lot of laughs along the way!

Accompanied once again by the incomparable Simon Stone, don't miss out on DIVAS!

"Martine thrilled us with her beautiful voice and vibrant, charming personality. She had the audience enthralled and left them wanting more!" Wendy Hall, Manager, Her Majesty's Theatre, Ballarat

Tickets available by calling 1300 88 88 02 or online at [www.takeapeek.com.au](http://www.takeapeek.com.au) or at any MRSC customer service centres (Kyneton, Woodend, Romsey and Gisborne)

Tickets: Full \$16.50, Groups 10+ \$15, package of 5 shows in the Daylight Theatre Series \$15 each saving of \$7.50 Seating: Flat Floor

LOCATION: The Town Hall - Kyneton 129 Mollison Street, Kyneton

WEB: <http://www.takeapeek.com.au>

**Help us help you! Please EMAIL your ads and articles PRIOR to the 15th of the month to [sales@collieroffice.com.au](mailto:sales@collieroffice.com.au)**

## GARAGE DOORS

**ELECTRIC GATES • SOLAR GATES  
SELF OPENING GLASS DOORS**

**Ken Ross**

**0427 661 543 5422 7507**

**Central Highlands Doors & Gates**

*Serving Kyneton & Woodend*

**WOODEND**

**Proud to be Pokie-free**

*Discover your  
inner artist*

**ART & CRAFT MATERIALS**

*Join our Craft Workshops*

**• Beading • Card Making • Scrapbooking •**

**43 Anslow St. Woodend 5427 4455**

## Slava & Leonard Grigoryan

Slava & Leonard Grigoryan- Guitars Saturday 3 April at 1pm. One hour concert. Don't miss your chance to hear the magic of the Grigoryan brothers at incredibly cheap ticket prices.

Having performed much of the standard repertoire for two guitars, their passion is to expand the classical guitar repertoire through new arrangements, commissions and collaborations. Coming from an eclectic musical background, improvisation has always been an important part of their musical language. This combination of influences sets their performances apart from other classical ensembles. Program includes music by the Beatles and Flamenco guitar music.

Recital held at Braemar College, Heyward Hall at 1pm on Saturday 3rd of April. Tickets cost \$20 full and \$10 concession (unemployed/pensioners and students) or special \$40 family prices. Seating is on a first come, first serve basis. For Bookings call 5426 1490 Proudly presented by the SR Stoneman Foundation & Duneira Pastoral Co

## Meta Massage

SPORTS/REMEDIAL MASSAGE, SHIATSU, REIKI  
Raymond White

**Telephone 0411 268 336**

**for an appointment**

18 years experience • Chronic and acute conditions  
Sports injuries • Rehab work

**All local groups, clubs and committees are invited to submit articles for publication**

## Find yourself in Church this Easter

The churches of Woodend invite you to join them in this most sacred Christian celebration. You are most welcome at any Woodend church this Easter.

**St Andrew's Uniting Church, Forest Street**

1st: Maundy Thursday 7.30 pm Tylden Uniting Church

2nd: Good Friday 9.30 am

4th Easter Day 10.30am Communion

**St Mary's Anglican Church, High Street**

28th: Palm Sunday 10.30 am

31st: Holy Wednesday 10.00 am

1st: Maundy Thursday 7.30 pm  
(Eucharist & Foot Washing with Vigil)

2nd: Good Friday 11.30 am

4th Easter Day 10.30am

**St Ambrose Catholic Church, Templeton Street**

30th: 7.30pm Penitential Service

1st: Maundy Thursday 7.30pm Mass of the Lords Supper

2nd: Good Friday 10.30am Stations of the Cross

2nd Celebration of the Lords Passion

4th Easter Day 10am mass

**Living World Christian Church, Mitchell Court Romsey**

4th Easter Day 10am

## Not just Chocolate

Q. Is Easter just a story to you or have you discovered the reality of the One who was raised from the dead?

Let this story give us all a “check-up” My daughter was four years old and about to see her first Easter play. Like most little girls at Easter, she was all decked out in her favourite outfit, patent leather shoes, and to top it all off – her beautiful Easter hat.

As the play started, she saw the actors come on stage and screamed with excitement, “THERE’S JESUS!” He was playing with the children on the stage and she wanted to know why she couldn’t go up and play with Jesus too. My response to her was, “Honey, this is only a play. He’s only an actor. This isn’t real.” “Okay,” she said, “but will you pick me up so that Jesus can see my hat?”

During a scene of Jesus praying in the Garden of Gethsemane, soldiers came barging in yelling and screaming. My daughter became so frightened that she turned her face away, buried it into my chest and began to cry. Again I tried to rationalize with her, “It’s okay, honey. This is only a play. These are only actors. It’s not real.” So she agreed to watch some more.

Then came that dreaded scene. Down the isle of the church came Jesus dragging His cross – people yelling and cursing him. This was too much. She could not bear to watch. I held her tightly and tried to comfort her. “It’s okay, honey. This is only a play. These are only actors. It isn’t real.”

Next, the soldiers grabbed Jesus, threw him against the cross, picked up their hammers and ---SLAM!--- She screamed at the top of her lungs, “NOOOOOO! THEY’RE KILLING MY JESUS!” She cried so loud and so long that I had to rush her out of the auditorium. I took her outside where she could finish watching the play on the outside TV screens and told her Jesus was going to come back to life if she would watch. But she would not be consoled until she could see Jesus alive again. At the end of the play, she was determined to go up and see Jesus and have him hold her in his arms to ensure he was alive.

Many people were in that auditorium that day. Like me, they had all gone to see a play – only actors – it wasn’t real. But when we saw the story of Easter through the eyes of a child, it became real once again.

The truth is this is NOT ‘just’ a story. It is an historical FACT. Jesus did die on the Cross for you and me. All of our sins and shortcomings were placed upon Him and He paid for them in FULL! And He did rise again and now lives forever more in the hearts of those who are trusting in His liberation. The events of Easter cannot be reduced to a creed or philosophy. We are not asked to believe the doctrine of the resurrection. We are asked to meet this person raised from the dead. In faith, we move from belief in a doctrine to the knowledge of a person. Ultimate truth is a person. We met him. He is alive! Has Easter become to you just another story? Has it lost its appeal? Its richness? Its life? Then maybe you need a good dose of child-like faith this Easter.

Submitted by Living World Christian Church



*Lachlan Fleming*

# CARPENTRY

REGISTERED BUILDING PRACTITIONER

## 0401 499 898

EXTENSIONS RENOVATIONS  
ALTERATIONS

## TERRY’S GROUND CREW

# 0400 909 303

**ENJOY YOUR PRECIOUS WEEKENDS**

**MACEDON RANGES  
VOUCHERS ACCEPTED**



**pensioner  
discounts  
available**

**GET READY FOR  
SPRING AND SUMMER**

## Community Garage Sale

Sat 17 April 9am - 1pm at 7 Mitchell Court, Romsey.  
Community members invited to participate, Number of vendors will be limited (with allocated area) Get in early & secure your stall-lot for only \$15. To Register: Ph 5429 6327 or Email: livingword@iprimus.com.  
auLiving Word Christian Church Sunday Service Times:  
10am 7 Mitchell Court Romsey & 6pm Woodend Community Centre High Street Woodend

# MACEDON RANGES SELF STORAGE

<ul style="list-style-type: none"> <li>* 7 day access</li> <li>* Individual units</li> <li>* Affordable prices</li> <li>* Insurance available</li> <li>* Now Fully Alarmed</li> </ul>	<p>Store your:</p> <ul style="list-style-type: none"> <li>* Cars</li> <li>* Boats</li> <li>* Business documents</li> <li>* Furniture etc.</li> </ul>
---------------------------------------------------------------------------------------------------------------------------------------------------------------------------------------	------------------------------------------------------------------------------------------------------------------------------------------------------

**Lot 3, Hoyle Court, Kyneton 5422 1898**  
(Off Beauchamp St) **5422 3488**



## FIREBIRD MOTOR REPAIRS CAR WASH

31 URQUHART STREET  
WOODEND 3442.

OPEN 7 DAYS  
Phone:(03) 5427 2255

## Macedon Ranges Film Society

Would you like to see more movies? Don't want to travel too far? Pay too much? Well, a solution may be at hand. Macedon Ranges has a new Film Society. Macedon Ranges Film Society will be showing its first film on 20 April at 7pm @ Woodend Neighbourhood Centre. Membership of the Society is \$45 for this year, this will entitle you to 8 films this year. Next year the membership will be \$60 but we will show 10 films.

In order to view the films the Society shows you have to be a member.

The Society are going to show many different genres of film, but generally speaking less main stream. Members are encouraged to tell us films they would like to see and we will endeavour to show them.

If you are interested in joining Macedon Ranges Film Society please call Victoria Wells 5427 2323 for details.

**MACEDON RANGES  
CALISTHENICS COLLEGE**  
www.macedonrangesc.com  
Phone: 0433 476 157  
email shell\_on\_the\_beach@hotmail.com

Principal: Shelley Bertolini



**ACE  
LIGHTING**

**Wholesale  
lighting specialists**  
www.ancelighting.com.au

Specialists in energy saving lighting including LED's, Energy reduced down lights, and all domestic & commercial lighting

9499 4111  
0418 300 780  
334 Darebin Rd Fairfield

## Woodend Lions Art Show

Once again, in spite of the weather, the Art Show was a great success with both the artists and the general public.

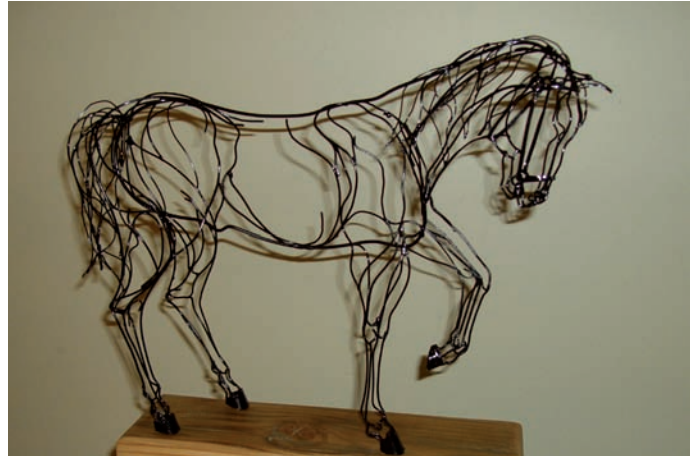
The winners were: Debra Sterley Memorial Award

Best Local Artist - Helen Cottle; The Johnson Family Award, Best Oil Painting – Stan Perkins, Barker Trailer Award, Best Watercolour – Helen Berre; The Woodend Traders Award, Best Other Media - Barry Ackland; Ray and Sue Lodder Award, Best Sculpture – Alwyn Harbott; The Woodend Traders Award, Best Miniature Pair – Carolynne Marrone; Mrs A. M. Wiber Award, Best Under 16yrs – Arii Rintala – Dog on the Beach and Katie Simpson – Don't Disturb Me. The Judge for 2010 was Cliff Griffiths.

The Raffle: The painting donated by John Walsh was won by Megan, who was delighted with her prize.

The teddy bear donated by Kerrie's Bundle of Bears was won by Mr and Mrs Rose.

Woodend Lions would like to thank everyone involved with the Art Show for their assistance and continued support.



Best Sculpture was awarded to Alwyn Harbot for this stunning horse.



**CONTINUING VETERINARY  
EXCELLENCE**

*Our commitment to you is to provide the highest quality veterinary services in medicine, surgery, health and wellbeing and preventative healthcare in a friendly, personalised & caring environment.*

*We care for all companion animals, equine, alpacas & livestock.*

**ANIMAL MANIPULATION**  
24 Hour Emergency Care  
**5427 4344**  
12 Anslow Street Woodend

## Your Memories to DVD

- \* 8 mm/16 mm Films
- \* Mini DV
- \* Compact VHS
- \* VHS

**Discount for Quantity**  
 **Top Hat Productions**  
**Ph: 5422 3930**

## Macedon Ranges Art Group

The Macedon Ranges Art group is now preparing for their 6th Autumn Art Show which will be held on the 1st and 2nd May, 2010. President, Marian Alexopoulos, said that the autumn months are undoubtedly the most beautiful months of the year in the Macedon Ranges which greatly inspires us all.

The Macedon Ranges Art Group represents an established core of well known local artists, working in a wide range of media. The exhibition will include high quality works in all mediums and styles, as well as ceramics, textiles and glass. Unframed works will also be available at very reasonable prices.

Marian further said the Art Group is always evolving and expanding which results in fresh new art works and a greater variety of art to be available to the public. We are expecting a very successful exhibition, and would just like to remind people that the profits made from our shows are donated to the CFA to assist them with the wonderful work they do in protecting our communities in our bush fire seasons.

The Exhibition will be held at the Masonic Hall, corner Aitken & Fisher Streets in Gisborne, opening 10-4 daily.



*Pictured; Joyce Hopwood-Knights. Joyce is a profession artist and is well know in the Macedon Ranges region. She enjoys painting a variety of subjects in the modern impressionist style.*

# BGE

## Joinery Quality you deserve

• Kitchens • Shop fittings • Bars

### BRAD ELSE

Mob: 0412 355 548 Ph: 5422 2571

Factory 2/27 Redesdale Rd., Kyneton

Visit our Showroom 166B Mollison St, Kyneton  
11am - 5pm Fridays or by appointment



## WOODEND & DISTRICT PODIATRY

### John F. Shapland

Resident Practitioner

Reg. Department Veteran's Affairs

### 5427 2064

Business and After Hours

1895 Mt. Macedon Rd., Woodend

## Kyneton District Health Service Woodend Auxiliary

### April Is Mothers' Day Raffle Month

This month you'll find us once again sitting in Coles Supermarket selling tickets in our Mothers' Day raffle. First prize will be a Canteen of Cutlery, and there will be others also.

As always, tickets are only \$1, so we feel sure we will get our usual support from the community.

We will also have a morning selling tickets, plus cakes, biscuits, jams, and other hand-made goods, at the Hospital itself.

Our April meeting will be held at 20 Sullivan's Rd, the home of our President, Marjorie Wilton, on Thursday April 8th at 1.30 p.m. New members welcome!!

Submitted by Jo Clancy

## The fencin' fella

- colorbond
- tubular
- timber
- steel picket
- pool

## Mini Earthmoving Kanga Loaders

Attachments include:  
rotary hoe, soil leveling bar,  
4 in 1 bucket, trenchers,  
post hole diggers, tipper

## SHAUN BARRON

MOB: 0407 232 900 or 5422 3488 AH

# ZUMSTEIN



## DESIGNER AND MAKER OF FINE FURNITURE AND JOINERY

"Third generation woodwork really shows"



Zumstein Pty Ltd  
Factory 1/32 Brooke Street  
WOODEND VIC 3442  
Ph 03 5427 4579  
Fax 03 5427 2284  
Mobile 0412 138 364

## Another Dream Takes off for Cambodian Kids

Cambodian Kids Foundation welcomes their second medical student to the foundation this week. Two doctors and two nurses will be taken onboard to kick-start CKF's latest initiative at the Attitude Centre for Education in Phnomh Penh.

Already consisting of two young doctors, the Medical Project will enable 4 Khmer students to live their dream. The scholarships include boarding and university education and the students will experience hands on work with fellow CKF staff and volunteers.

We hope to connect the students to their own personal mentor here in Australia. We are currently seeking doctors and nurses willing to volunteer their time to create a friendship with our students via email with the prospect of travelling to Cambodia to assist with their work in the field.

It takes 7 years to become a fully qualified doctor in Cambodia. After the first 2 years, these doctors and nurses will become mentors to the next 4 students and so on.

When we first visited Thnal Bek Village (where Saing Sy Centre is now located) we knew immediately that our

progress here would be slowed if we did not get our own medical staff on board, as without them we simply do not have the knowledge to treat people with illness in their own village.

The skills of these students will be put to practice daily as we fight the infection amongst communities such as Thnal Bek. This project will also include the education of the community in basic health and medical knowledge at CKF's own facilities such as Saing Sy Centre, Rudi Boa School and the base of the project, the Attitude Centre for Education.

As these determined young students enjoyed their welcome party at ACE this week, here in Australia we reflected on how far we have come, we are so proud of our foundation. The students, teachers and staff in Cambodia have worked so hard to make every project successful, we have achieved every goal we have set out to accomplish and that is because every one of them believes in the dream of a new Cambodia.

Many thanks must go out to the Woodend sponsors that are supporting the medical project financially; your belief in our dream has made it happen.

We still need sponsors to support the ongoing Medical Project, \$50 per month will purchase medical supplies and equipment and fund the costs of teaching basic medical knowledge to some very poor parents and families in Cambodia, therefore ensuring lives are no longer lost due to basic infections such as Scabies.

Every cent donated to CKF not only educates and empowers people in desperate need; it makes a dream a reality for someone that would never otherwise have the opportunity. Contact me if you want to change lives through the Medical Project Mentorship or Sponsorship. [emily@cambodiankidsfoundation.com](mailto:emily@cambodiankidsfoundation.com)

## KYNETON EQUIPMENT & PARTY HIRE

**FOR ALL YOUR HIRING NEEDS**  
8-12 BEAUCHAMP ST PHONE (03) 5422 2311  
KYNETON VIC 3444 FAX (03) 5422 2930

Email: [kynhire@bigpond.net.au](mailto:kynhire@bigpond.net.au)  
website: [www.kynetonhire.com.au](http://www.kynetonhire.com.au)

## Magnetic Websites

Martin Beaumont

PHONE 03 5427 4478  
MOBILE 0414 274 988  
HTTP [www.magneticwebsites.com.au](http://www.magneticwebsites.com.au)  
EMAIL [martin@magneticwebsites.com.au](mailto:martin@magneticwebsites.com.au)

Developing websites for the Macedon Ranges and beyond, ask how we can help you get online

## WOODEND NURSERY & GARDEN SUPPLIES OPEN 7 DAYS

"LOCAL KNOWLEDGE FOR LOCAL CONDITIONS"  
36 URQUHART ST, WOODEND  
Tel: 5427 1866 Mobile: 0428 271 866

Full range of garden & landscape needs  
Rock, Soil, Sands, Sleepers  
Bobcat hire

## LEADING HAND CARPENTRY COMPLETE BUILDING SOLUTIONS

Call 0439 360 896 or email  
[shannon@lhcarpentry.com.au](mailto:shannon@lhcarpentry.com.au)



REGISTERED  
Building Practitioner



## Chiropractor – Mark Brown

- 20 years in Practice.
- Upstairs at Westpac Bank, 75 High Street
- Muscle realign and stretch techniques
- Gentle spinal adjustments
- Shoulder, elbow, wrist, knee, foot problems
- Headaches, migraines, athsma, neuralgia, digestive problems



Phone 5427 1456 or 0407 526 403

# Eating Out, In & Around Woodend



## The Village Larder

Retro Comfort Food  
(and great coffee!)

Produced with Passion and Skill

Open 8am - 4pm(ish) Thu - Tue

Phone 5427 3399  
[info@thevillagelarder.com.au](mailto:info@thevillagelarder.com.au)  
[www.thevillagelarder.com.au](http://www.thevillagelarder.com.au)



**victoria**  
HOTEL  
WOODEND

**Bistro**  
Open 7 days lunch & Dinner  
Daily Blackboard Specials  
Open Fires

**Bar**  
Counter meals daily  
Fridays Tradesmans Lunch-\$14 pot & parma  
TAB & Sky Channel

**Specials**  
\*Tuesday Locals Day menu \$17.50  
with glass house wine, lunch & dinner.  
\*Pensioner & Seniors card holder Lunch menu  
from \$12.50 Monday to Thursday (Lunch only)

Drive Through Bottle Shop  
Open 7 days  
Music Sundays  
From 2.30pm, ring for information

**Bookings 5427 2721**  
67 High Street, Woodend  
[www.vicwoodend.com.au](http://www.vicwoodend.com.au)  
[info@vicwoodend.com.au](mailto:info@vicwoodend.com.au)

CAMPASPE HOUSE  
A COUNTRY HOUSE HOTEL & RESTAURANT

### Mother's Day

Sunday 9th May, 2010

Spoil your mother with our special two course  
a la carte lunch at Campaspe House for \$45 per person  
including a glass of wine,  
or a traditional afternoon tea in our  
beautiful Edna Walling Garden for \$28 per person.  
Places are limited, and bookings essential

Goldies Lane Woodend Telephone: 5427 2273  
 Email: [reservations@campaspehouse.com.au](mailto:reservations@campaspehouse.com.au) | Web: [www.campaspehouse.com.au](http://www.campaspehouse.com.au)

## Not Just Fudge

126 High Street, Woodend

Home-made Fudge,  
Natural Ice Cream, Coffee, Tea, Herbal Tea, Milk &  
Thick Shakes, Cakes, Sandwiches,  
Freshly Squeezed Fruit & Vegetable Juices

Ph: 5427 2210  
Fax: 5427 2880




**Vivs**  
**Organics**

We deliver to your home the  
**freshest, best quality,  
certified organic  
fruit & vegetables available**  
& guarantee this 100%

Pick from a range of pre-selected boxes or select your own order from our weekly availability list

Phone: 0409 386 875  
or 5429 1156  
email: [vivs@netcon.net.au](mailto:vivs@netcon.net.au)

[www.vivsorganics.com.au](http://www.vivsorganics.com.au)



## MOUNT MACEDON WINERY

*Our 21 year old vines are known for  
their wonderful wines*

*Wines for tasting, by the glass or a  
bottle to share*

*Relax on our scenic outside deck,  
Or be warm and cosy inside*

*Enjoy our platters and pizzas from  
12-3 pm*

*Tasting groups welcome and function  
rooms for special events*

open Saturday, Sunday & Public Holidays 11am - 5pm  
433 Bawden (Douglas) Road, Woodend / Mt Macedon  
[www.mountmacedonwinery.com.au](http://www.mountmacedonwinery.com.au)  
**5427 2735**

# Eating Out, In & Around Woodend

**VIEWS**  
RESTAURANT

Present this ad  
to receive one  
FREE coffee!

Good Friday

Seafood Buffet Dinner

\$55 per adult

652 Black Forest Drive, Macedon Ph 5426 4033



**Zarby's**  
Wine bar & bistro

Open Wednesday - Saturday  
10am till late

84-88 High Street, Woodend P: 5427 4414

\* FAB FOOD  
\* FUNCTIONS & CATERING  
BY ARRANGEMENT  
Bookings Essential  
BYO wine only  
Light Snacks Mondays  
Free entry for  
Macedon Ranges residents  
**Tel: 5427 0295**  
Large range of Australian Gifts

**Hanging  
Rock  
Café &  
Country  
House**

**HOLGATE'S BAR  
& RESTAURANT**

Microbrewery Hotel with cosy  
open fires, stained glass windows  
and friendly atmosphere. Award  
winning local beer. Delicious  
meals including house-made bread, pasta and desserts.  
Function room and stylish accommodation now available.  
Open for Lunch Tues-Sun. Open for Dinner 7 Days  
**79 High Street, Woodend**  
**Ph 03 5427 2510**



**Schatzi's** Frank & Rose Gorlitz

Open 7 Days  
8am till late  
breakfast, lunch & dinner

For Bookings  
**Ph/Fax 5427 4447**  
**Mobile 0488 423 537**  
"Where Lovers of Food Eat"



**RedBeard Historic Bakery**  
impresses the critics:

Sunday Herald Sun ranks RedBeard's Hot Cross Buns  
no. 1 out of 'Five of the Best':  
"Baked in a huge 19th century woodfired oven, these  
fabulously dense sourdough buns (\$2 or six for \$10) are  
full of organic fruity goodness with delicate spice  
and a lovely sticky top."

The Age Cheap Eats 2010:  
"The bakery's sourdough bread is the star attraction  
but the café hosts a strong support cast. There's a  
relaxed retro vibe, with laminated tables and a couch  
area with toys to keep the kids entertained."

The Age Foodies' Guide to Melbourne 2010  
"There's some excellent sweet baking here, with choices  
such as rhubarb cake and an orange and almond cake with  
a creamy filling. On weekends there are also escargot,  
sticky buns, plain and chocolate croissants on offer. Add  
in live music, pizza nights and sourdough baking classes  
and you have it all!"

RedBeard Historic Bakery Open 7 days  
Old Bakery Lane Trentham T. 03 5424 1002  
[www.redbeardbakery.com.au](http://www.redbeardbakery.com.au)



## From Woodend to China

In February long term Rotarian Kai Saldaneri gave a fascinating talk to Rotary members on teaching in China. Kai has spent the past six months teaching Chinese students in the city of Dalian, close to the North Korean border. This little known city of six million inhabitants apparently has little to do with traditional Chinese architecture being more like a western or Russian metropolis. Kai recounted how students are under great pressure to achieve, often spending over twelve hours per day in class and doing homework.

Places in universities are very limited in ratio to population so only those students with the very best results can qualify. In December Kai returns to Australia for a well earned break so we hope to bring further news on living and working in China!



*Helping you save  
for a  
"Rainy Day"*

**Bob Nixon**

B.Com., Dip.Ed., Dip.A.I.I., Cert. IV Fin. Plng., F.A.F.A.

**Authorised Representative,  
Total Financial Solutions Australia Pty Ltd  
ABN 58 003 636 968 AFSL No.246545.**

Shop 10, 34a Hamilton Street. Gisborne Vic 3437

**Ph: 03 5428 0123**

**Fax: 03 5420 7710**

E: [bobnixon@netcon.net.au](mailto:bobnixon@netcon.net.au)

W: [www.bobnixon.com.au](http://www.bobnixon.com.au)



REGISTERED BUILDING PRACTITIONER (Est. 1992)

**SPECIALISING IN:**

- Renovations & Specialist Carpentry Work
- Heritage Building
- Pergolas & Decks
- All General Home Maintenance
- Prompt & Reliable Service
- 10 years based in macedon ranges & surrounds

For a free estimate phone Darren – 0438 756 231/5427 2215

## A Rare Gem

Kyneton Theatre Company is rehearsing the moving drama 84 Charing Cross Road and it's shaping up to be a stunning production.

This popular play, directed by Bette Sartore, is based on a real-life, 20-year, written correspondence between Helene Hanff, an impoverished New York writer, and Frank Doel, the chief buyer for Marks and Co., Antiquarian Booksellers, at Charing Cross Road, in London.

Helene, in her search for her "peculiar taste in books", first contacted the shop in 1949, and it became Frank Doel's responsibility and eventual joy, to find the rare books she requested.



*Rosalee Neill and Frank Sartore in 84 Charing Cross Road*

A long-distance friendship gradually evolves between the two and with the other staff in the shop. Helene creates a link with England and plans a pilgrimage to the bookshop and London. Does she make it to the bookshop? Will she meet her friends?

Performances of 84 Charing Cross Road will be at K.T.C.'s new home, the Bluestone Theatre, Hutton Street, Kyneton, on Fridays and Saturdays, April 9, 10, 16, 17, 23, 24 all at 8pm plus a matinee on April 18 at 2pm. There will be a special Gala Night on April 24 when patrons are invited to have supper with the cast.

This show will have auditorium-style seating and tickets are available from InstrAmental Music in Kyneton - for bookings phone 5422 1083.



*Home of the noted gold and silversmith Ernest Leviny and his family from 1863 to 1981 featuring authentic furnishing, arts and crafts collection, significant heritage garden. Also Looking After Your Soil a series of talks and hands*

*on instruction for gardeners keen to get the best from their soil April 13, 20 & 27 1.30pm, \$5 per session or \$12 for all three. Plus Chooksheds in Gardens a self drive garden ramble to visit five out of eight gardens with interesting "chooksheds" which are seldom open to the public - the gardens that is. Friday*

*23 April bookings essential cost \$35 pp including lunch at Buda 42 Hunter Street, Castlemaine 3540*

*T/F: (03) 5472 1032 E: [admin@budacastlemaine.org](mailto:admin@budacastlemaine.org)*

**Help us help you! Please EMAIL your ads and articles PRIOR to the 15th of the month to [sales@collierooffice.com.au](mailto:sales@collierooffice.com.au)**



## Accountants, Advisors & Planners

Office Locations:  
111 High Street, Woodend Ph: 03 5427 8000  
2/19 Bourke Street, Kilmore Ph: 03 5782 1273  
email: admin@riverwoodgroup.com.au  
website: www.riverwoodgroup.com.au

Riverwood Group can offer a *Total Financial Solutions* package for you and your family. Take a look at some of the services we provide:

### Taxation

All your taxation requirements to suit individuals and small businesses.

### Investments to Create & Protect your Wealth

Managed Funds, Indexed Funds, margin Lending and more

### Planning for Retirement

Allocated Pensions, Centrelink Benefits and Payments

### Stockbroking

Recommended lists, broking facility available, share updates

### Superannuation & Rollovers

Advice, placements, Self-Managed Super Funds and Eligible Termination Payment Advice

### Other Services

Home & Investment Loans, Business Loans and Leasing, Income Protection, Life Insurance, Professional Indemnity, Estate Planning and more.

## A Sharing of information – Carer's lunch for Mental Health Carers

Mental Illness is usually a traumatic experience for not only the person who experiences it, but also every other person who cares for them. Parents, siblings, partners and friends can struggle to know where they can find information and resources to support the person that they care for. Navigating mental health and community services available can be difficult and daunting particularly when carers are dealing with their own feelings around mental illness. Caring for someone with a mental illness can often come at the expense of carers own emotional and physical health needs.

Bendigo Health - Carer Support Services and St Lukes – Anglicare are running a free lunch for mental health carers from the shires of Macedon Ranges and Mount Alexander. The lunch will have guest speakers on what carer supports are already available in these shires and give carers an opportunity to let services know what their needs are.

The lunch is being held at in the Richardson Room at the Kyneton Town Hall, between 11am -3pm on Saturday the 17th of April, 2010. Places are limited and must be booked on 54705403

For further information about the event please call Chris Dawson on 54212000 or Jan Steen on 54705403

**All local groups, clubs and committees are invited to submit articles for publication**

## Do you know how many chemicals you could be eating?

Do you know where, and more importantly, how your fruit and vegetables are grown?

All our fresh produce are Australian grown with no chemical sprays, artificial fertilisers or genetically modified materials,  
**just as nature intended.**

Nature's Garden Organic Produce is guaranteed Australian grown and 100% certified organic.

Call in and see our extensive 100% organic range at Shop 4A Collier St, Woodend (cnr Anslow St) or call 5427 4406

[www.naturesgarden.com.au](http://www.naturesgarden.com.au)



## Under New Management

New Release + a free Weekly for Overnight \$5  
6 weeklies for \$6

### NEW DEALS

MAD MONDAYS

\$ 3 New Releases

CHEAP TUESDAYS

\$8 - 2 New Releases + 2 weeklies

Mon – Fri: 11 am – 9 pm

Sat: 10 am – 9 pm

Sun: 12 pm – 8 pm

65 High Street Woodend

Phone: 03 54274011



## Doctor shortage

The whole of Australia is experiencing a shortage of General Practitioners. Like many practices, Brooke Street Medical Centre is affected by this shortage. We are operating with reduced numbers of doctors - the same number we had 10 years ago.

Woodend has been declared by the Federal Government as an "area of need" in relation to GP shortages. Brooke St. is seeking replacement doctors through a number of avenues. While the practice believes more doctors will eventually come to the area it is not expected to be a quick fix.

## Urgent medical needs

Given the doctor shortage, the Practice is seeking the community's assistance in regard to the seeking and making of appointments.

People with urgent medical needs will always be seen on the day. When patients phone for an appointment, they may be asked whether or not they need to be seen that same day. Patients may also be asked to speak to a nurse who will talk with the patient about their medical needs to help determine the best course of action.

Patients will be "triaged" – this means that those most in need of care are seen first.

Patients with urgent needs are often seen in the Treatment Room which is staffed by nurses and a doctor. Patients may have to wait as they are seen according to level of urgency. Someone with chest pain will be seen ahead of the person with an ear ache, for example.

We aim to meet the needs of our community in the best way possible with limited resources at this time.

*Deborah Stidwell*  
Practice Manager

Brooke St. Medical Centre – tel. (03) 5427 1002  
(after hours: tel. 1300 55 75 12)

## Flu clinics

Flu vaccinations are delayed in arriving in General Practices this year. At the time of writing we expect to be able to run our flu clinics around mid-April. Please phone us around mid-April to book in for a flu clinic.

Those who are aged 65+, pregnant or indigenous aged 15+ are eligible to obtain the vaccination free of charge. Free vaccinations will also be provided for people with a range of chronic illnesses or conditions that predispose to severe influenza illness. Your doctor will assess your eligibility.

It is recommended that those with medical risks or a predisposition to severe illness be vaccinated.

For patients not in the above categories, there will be an \$18 fee for the vaccination.

Please note that the Government is not offering a discounted fee for Health Care Card holders and pensioners via scripts at the chemist this year. However, for those who are eligible, the free vaccination applies as above.

Patients who attend a flu clinic will be bulk billed – otherwise normal consultation fees will apply.

### **Should I have the flu vaccination if I have been vaccinated for swine flu recently?**

Those who have had the H1N1 (swine flu) vaccination should have the seasonal flu vaccine regardless of when they received the H1N1 vaccine. The H1N1 vaccine is still available at no cost for the vaccine.

### **Should children have flu vaccinations?**

Panvax is available to vaccinate children against H1N1 (swine flu). There is also a seasonal flu vaccination available for children.

All children from 6 months can be vaccinated against flu. It is highly recommended for those children who have medical risks or conditions which predispose to severe illness.

# This page is proudly sponsored by the 19th HOLE SHOPPING CENTRE



## Upcoming Events & Meetings

### April

- 1 Red Cross meeting
- 2 Good Friday
- 4 Easter Sunday *For information on Easter Church Services, see page 7*
- 3 Slava & Leonard Grigoryan, Haywood Hall, Braemar College
- 8 Mental Health Awareness Luncheon for Carers
- 9 "84 Charing Cross Rd" Kynton Theatre Co. opening night
- 17 St Ambrose Fete, Woodend Carnival
- 17 Mental Health Carers Lunch, Kyneton
- 18 Lions Village Market
- 18 Woodend Landcare working bee
- 20 Meacedon Ranges Film Society
- 22 "Divas" Kyneton Town Hall
- 22 Rotary Fundraising luncheon
- 24 "84 Charing Cross Rd" Kynton Theatre Co. Gala night
- 24/25 Exploring the 5th Kingdom  
Woodend Neighbourhood Centre
- 25 ANZAC Day Dawn Service Mt Macedon Cross, Morning Service Woodend

### May

- 1 Macedon Ranges Art Group Show
- 7 "Anything Goes" Kyneton Town Hall
- 14 Zulya & The Children Of The Underground. Malmsbury Hall
- 16 Lions Village Market
- 22 Arts Ball, Kyneton Town Hall

### June

- 11-14 Woodend Winter Arts Festival, visit [www.woodendwinterartsfestival.org.au](http://www.woodendwinterartsfestival.org.au) for information.
- 18 Wombat Stew Kyneton Town Hall

### July

- 9 Mario Lanza Story
- 14 Johnny Cash Tribute Show
- 17 Fox. Kyneton Town Hall

Community groups are invited to submit their event dates to be included in this listing

**PLEASE SEND US YOUR FUTURE DATES**

### COMMUNITY GROUPS CONTACT DETAILS

Alcoholics Anonymous Friday night, Cobaw Community Centre 0409 131 144  
 Australian Breastfeeding Association, Heather 5427 2398  
 Cobaw Thursday Walking Group 5427 3340  
 Daylight Masonic Lodge, 5427 2480  
 1st Woodend Scout Group, 5427 4968, Jenny  
 Friends of Macedon Ranges Library, Chris/Bill 5427 2469  
 Garden Club 5422 6062 / 5427 3340  
 Living Word Christian Church 5429 6327  
 Historical Society, Courthouse, 5427 2523  
 Macedon Ranges & District Motor Club, 10 Webb Cres, New Gisborne 1st Wednesday each month 8pm  
 Macedon Ranges Animal Aid, Buffalo Sports Stadium, 5427 1752  
 Macedon Ranges Bridge Club, 5427 4440  
 Macedon Ranges Families of Children with Disabilities Support Group, 5427 3365  
 Macedon Ranges Residents Assc. 5427 1481 or 5427 2651  
 Macedon Ranges Communicators (ITC), 5427 2669  
 Macedon Ranges Photographic Society, 1st Tues of month, Ron Mathews 5427 3284  
 Probus, 5427 2003  
 R.S.L., Anslow Street 5427 3122  
 Red Cross, 5427 1260  
 Rotary Club of Woodend, meetings weekly at Vic Hotel Thursdays 6.45pm, Kai 5427 1029  
 St. Mary's Guild, 11am, 4th Wednesday of month  
 St. Mary's Street Stall, 9-12 noon outside Woodend Newsagency (2nd Sat of the month)  
 Woodend Landcare Group, Jo 5427 1909 or Doug 5427 0666, 3rd Tues Meeting, 4th Sunday Working Bee  
 Woodend Angling Club, RSL Hall, 5427 2395  
 Woodend Art Group, Railway Station, 5422 6172 or 5427 1659  
 Woodend Business & Tourism Association, Cori 5427 3434, 2nd Tues of month (BATA)  
 Woodend Lions Club, Meetings 2nd/4th Wednesday each month, ph Robyn Roberts 5427 1342  
 Woodend Model Railway Club, Buffalo Stadium  
 Woodend Pony Club, 5427 2793  
 Woodend Senior Citizens Club, Comm. Centre  
 Woodend SES Training Nights, Urquhart St  
 Woodend Winter Arts Festival Inc., Jacky 5427 1560

**Ian Marks Liquor**  
1300 627 575 ext 24 & 34

**Blue Orange Concepts: homeware**  
5427 4500

**Woodend Pizza & Pasta**  
5427 3777

**Coles Supermarket**  
5427 2377

**Collier Office & Business Assist and Woodend Copy Centre**  
5427 3092

**Pets Haven**  
5427 3603

**Mitre-10 Woodend Hardware**  
5427 2314

**BP Woodend**  
5427 2248

**Target Country**  
5427 4366

**Macedon Ranges Travel Services**  
5427 4777

**Kosmac & Clemens: optometrists**  
5427 4577

**Woodend Cycles**  
5427 2662

**Salvation Army Family Store**  
5427 4421

**Loose Change Bargains**  
5427 4466

**Bodywise Underwear**  
1300 66 17 66

**Australia Post**  
5427 2600

**Inner Artist**  
5427 4455

**The Spa Beauty Therapy Centre**  
5427 3322

### HIGH STREET SHOPS

**Color Me Cooper: clothing/gifts**  
5427 1454

**Chelleon For Hair**  
5427 3246

**Not Just Fudge**  
5427 2210

**RT Edgar Real Estate**  
5427 1222

**Woodend Bakery Cafe**  
5427 3434

## News From Woodend Landcare

Two projects for April, firstly Five Mile Creek. The continuing growth and well-being of all our recent plantings right along the Creek is very welcome, and should make all the people who have helped in planting and weeding very proud. Of course, the good rains we've had over the summer have helped a lot.

Unfortunately those same good rains have also helped the weeds to grow. Not only have many willows begun to reshoot, but the gorse, blackberries and broom are going gangbusters. We have applied successfully for a grant which will enable us to employ a contractor to do some spraying of these, but there will still be a lot of manual work for us.

We love to see so many people turn up at our planting days, but it would be truly wonderful if some of you could come back to our weeding days!

For our April Working Bee, is it possible that you and your family could turn up to help cut down gorse, blackberries, and thistles, and a whole forest of poplar seedlings??

As usual, a great morning tea will be provided. BYO strong gloves, work boots, and willing hands. April 18, Bowen St, Near Woodend Self Storage, Starting 9.30 am.

Secondly, Bert's group around Quarry Road is back to their regular Thursday morning working bee. They say they've been quiet over the summer, but they've still managed to keep the road and rail reserves along Quarry Rd, Bawden Rd and Sullivan's Rd in good nick!

Contact Bert Dawson on 5427 1520 for details of this group.

If you live in that area you will have seen how much has happened over the last five years, and it's a really worthwhile project. For more details about our work, phone Jo on 54271909, or e-mail [rasbooks@netcon.net.au](mailto:rasbooks@netcon.net.au)

Submitted by Jo Clancy.

## Ashbourne Landcare

Ashbourne Landcare received two grants recently, both in support of fencing off the river, removing gorse and planting native species. From the Federal Government's Community Action Grants, Ashbourne Landcare received \$5646 to go to several members keen to fence off their bit of river and plant natives. Community Action is an element of the Australian Government's Caring for our Country initiative; its aim is to help community groups involved in managing and protecting natural resources. From the State government's Second Generation grants Ashbourne Landcare received \$2862 to help a few landholders who have already been assisted by the NCCMA, to plant additional natives and extend fencing along the river.

Ashbourne Landcare has a 5 year plan in which restoring the health of the Campaspe River is the main aim.

submitted by Jane Holth

**ADVANCED EQUINE DENTISTRY**

Dr Shannon Lee BVSc

**0418 598 621**

**we come to YOU!**

Winner 2009 Macedon Ranges Business Excellence Awards for Young Business Person & Professional Services categories

Mobile services for Macedon Ranges

[www.advancedequinedentistry.com.au](http://www.advancedequinedentistry.com.au)

**Kirsty Nuttall**


**MACEDON RANGES  
PICTURE FRAMING SERVICE**

By appointment only  
Phone/Fax: 5427 3511  
Mobile: 0417 337 857

**"Magnificent" Art  
MAD Gallery & Café**

19 High Street, Lancefield  
Tel: 5429 1432  
Web: [www.madgallery.com.au](http://www.madgallery.com.au)  
Open everyday 10am – 5pm  
We're proud of our coffee and promise you the best coffee around, or your money back!

**WOODEND SELF STORAGE** (Vic) Pty Ltd



- Store your business documents, stocks or furniture
- 7 day access
- 33 individual sheds
- Affordable prices
- Insurance available

For any enquiries please contact  
**Leonie or Dennis Barker**  
on **5427 4175**

## Woodend Neighbourhood Centre

We recently held our AGM and I would like to thank the outgoing Committee of Management for their hard work and enthusiasm, and welcome in the new Committee.

Our new program will be distributed shortly after Easter and it is packed full of your favourite classes as well as several new activities and opportunities. Firstly the School Holiday program is operating during the first week of the school break. We have several fun ideas for your children including: Paper making, Glass fusing, Spanish and Movie afternoons

Alison Pouliot is presenting "Exploring the Fifth Kingdom - An Introduction to Fungi", which is sure to give you a fascinating insight to the world of local fungi. These workshops will fill fast so book your place now for either 24 or 25 April.

We will be offering many educational classes again this term including: Computers for Business; Skills for getting that job; Integration Aide training; Counselling; First Aid, CPR & anaphylaxis training; Painting on the computer; Confidence building skills and more...

For those of you who are more creative what about trying something different such as anatomy & physiology for beginners, creative writing, beginner patchwork, numerology, basic cheese making, DIY paving, Spanish or French conversation, basic car maintenance, meditation, jewellery making, silversmithing, or story theatre for 7-12 year olds. There really is something for everyone.

Fitness is another area we offer many different opportunities in, from walking and cycling, to Pilates and Yoga, not forgetting belly dancing, Tai Chi for seniors and Qi gong.

In partnership with Macedon Ranges Shire Council we are hosting Woodend's Whole Town Garage Sale on 1st May. Register your garage sale with us by 28 April. All bargain hunters will be able to purchase a map of all the garage sales from 8am onwards at the Woodend Neighbourhood Centre on 1st April and then go searching for treasures.

Finally our Life! Program, taking action on Diabetes starts this month. It is a State Government funded program run through Diabetes Australia, providing support and training to people at high risk of developing Type 2 Diabetes. This is a preventable condition and small adjustments to your life style now can mean you stay healthy for many years to come. Call in for a free risk test. This is being run in partnership with Cobaw Community Health.

If you haven't been into the Centre yet please pop in during week days. Our contact details are phone 5427 1845; email [reception@wnci.com.au](mailto:reception@wnci.com.au) ; [www.wnci.websyte.com.au](http://www.wnci.websyte.com.au) or visit 47 Forest St, Woodend.

submitted by Sarah Campbell, Coordinator

Regular business card advertisements (90mm x 55mm) are \$45 inc GST per month - book & pay 11 months and get 10% off.

FANTASTIC NEW PRODUCTS PRODUCTS FROM

 Blue Orange Concepts  
kitchen cook table home  
Shop 2, 130 High Street Woodend  
T 5427 4500 open 7 days

### Electric Pressure and Slow Cooker



- 5 Cooking appliances in 1- Pressure cooker, slow cooker, Electric Pan/Pot, Soup pot, and a Steamer/Rice Cooker.
- 2 Pressure Levels, - High Speed pressure for extra fast cooking & Low speed for improved vitamin retention.
- Stainless steel removable cooking bowl.
- Automatic keep warm setting at the end of cooking.
- Digital timer with countdown.

Available from April 18

**5 in 1 Kitchen Appliance just \$ 195.95**

Great Mothers Day Gift Ideas

### Multifunction Pizza Oven

- Cooks restaurant quality in just 5 minutes
- Great for kids parties
- Makes a great gift idea
- Healthy – you control what goes on
- Interchangeable stone base and deep dish pan

**The Pizza Maker - \$169**



## Woodend RSL

Well, the Annual General Meeting on 3rd March brought about a change at the helm. Reg Till stepped down as President and passed the baton to Barry Meldrum, who will also continue as Welfare Officer. I would like to take the opportunity to thank Reg for his leadership over the past years and I look forward to the challenges ahead. Also elected was Margaret Russell, as Secretary, who will take a lot of the workload off our Treasurer, Eric Read. Bill Gilchrist remains our Vice President and 3 ladies, Colleen Anderson, Betty Barsed and Barbera Gardner round off the Committee. Reg will continue to be active around the Club, as Immediate Past President, giving assistance and advice where warranted, but will also be managing our 'newly revamped' bar. The new beer dispensing equipment is delivering the coldest, cheapest beer in town. The construction of an outdoor covered area will be the next project for the Club, with plans currently being drawn up.

Anzac Day "Badge Week" is coming up soon and volunteers are required to fill the roster. If you are able to help out, please contact Betty (5427 2225) or the RSL (5427 3122). Badges go on sale as of Friday 16th April.

On the Welfare front, all Repatriation Health Cards are due to expire during 2010. From March DVA will be reissuing all cards. Changes to the cards will be the addition of a magnetic stripe, which will contain full name, file number, card type and expiry date. This will enable providers to swipe DVA cards in the same way Medicare cards are utilised. Hopefully, this will attract more providers to the scheme. There are also additional security features added to the new card designed to stop fraudulent use. Replacement of all cards will take approximately 6 weeks.

Membership is steadily increasing; the Ladies Auxiliary Friday Dinner Nights are not to be missed. Good Value for money! Why not come and see for yourself?

Submitted by Barry Meldrum  
President Woodend RSL Sub-Branch 0428 989 077

## Woodend Red Cross

The next meeting of the Woodend Red Cross Unit will be held in the SES Building at 1.30pm Thursday April 1st 2010. As many members as possible are requested to attend to discuss the Dutch Auction to be held on May 6th 2010. Our grateful thanks to all our supporters. New members always welcome.

Submitted by: P. Wilson & J. Podrazil



## Macedon Ranges Equine Vets

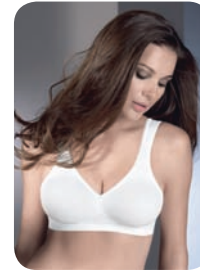
- **Full equine services including x-rays, ultrasound and endoscopy**
- **Foaling down**
- **Microchipping**
- **Dentistry**
- **Lameness**

**0400 449 990 03 5428 1888**



**bodywise**  
UNDERWEAR  
*comfort for women... everyday*

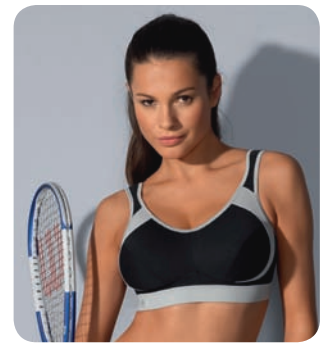
Next to Woodend Post Office  
[www.bodywise.com.au](http://www.bodywise.com.au)  
1300 66 17 66



**At Bodywise we care about your comfort  
with wire-free bras for real women of all ages.**

*Bras in sizes 10 to 28, cup sizes A to I (depending on brand and style).  
Fittings by appointment Mon-Fri 9-4.30 & Sat 9-12.  
Beautiful hand-made soaps and skincare products by Est Australia.  
Books, candles and cards. Secret Weapons bra accessories.*

**Gift vouchers available.**



# Bradley's Curtains + Blinds showroom now open

**Mon to Fri 9 - 5.30 + Sat 10 - 1**



t 5427 2361 fx 5427 1019 72 High Street, Woodend VIC 3442

[www.bradleyscurtains.com](http://www.bradleyscurtains.com)

## Australian Breastfeeding Association

### Woodend and District

Our local ABA group is back in action this year after a slow start. The focus will be on providing a service that anyone can access, member of ABA or not. It will be a group that will be there for someone to attend once or twice, and not feel that they have to commit to any more. There are lots of groups in Woodend that fulfil the role of providing social support and friendship such as playgroups and the Birthing & Babies Support Group (BaBs), so I am not looking for this to be our major role, rather I see our local ABA group as having a specific focus to provide breastfeeding information and support. As Woodend's local volunteer breastfeeding counsellor I will attend every meeting. The meetings for 2010 will occur on the third Friday of each month from 11am; at my house 13 Heron Street Woodend (first meeting of the year 16th of April). The local bulletin is now finished and encourage anyone who is pregnant, breastfeeding, or supportive of breastfeeding, to drop me an email (stapleya@hotmail.com) and I will send you a copy.

Submitted by Heather Steele (5427 2398)



**Grantra**  
HOME IMPROVEMENTS  
Specialising in Bathroom Renovations  
PO Box 736, Woodend 3442  
**0418 175 877**  
www.grantrahomeimprovements.com.au

Master Builder  
REGISTERED Building Practitioner

## OFFICE SPACE BECOMING AVAILABLE

Fully Air Conditioned  
Access to Photocopier  
Kitchen Facilities

PRIME LOCATION

75 High Street, WOODEND  
Contact Ivor Johnson 54274089

## Cancer and Natural Therapy Foundation

### What's on in April 2010

The Cancer and Natural Therapy Foundation is a non-profit, registered charity organisation. Its aim is to self empower people through active participation by assisting them in acquiring knowledge and understanding of a wide range of natural therapies to enable them to make 'informed choices.' The Foundation endorses an integrative approach to health where both natural therapies and conventional treatments are equally respected according to individuals' choices.

The Foundation provides the following services and resources: information and referral, resource library, professional counselling, guest speaker program, support groups, reiki healing, ifas treatment, ear candling, quarterly newsletter, self help workshops and educational films.

### Weekly Support Groups:

Health Awareness Support Group, Offering meditation, reiki healing and general discussion on natural therapies and preventative medicine. Tues 7.30-9.30pm.

### Self Empowerment and Healing Support Group

For "confidence building" and "positive living". Thurs 10-11.30am

### Health Workshops for April

"Recreate your life with positive thinking" Positive thinking Course based on The Secret. Running for 4 weeks from Thurs 8 April at 7.30pm. Cost: \$80 including handouts. Held at Neighbourhood and Community House, Elizabeth Drive, Sunbury. Phone: 9740 3977 (Mon/Wed/Fri) or Sandra on 0411 100 947

[www.cancernaturaltherapyfoundation.org/](http://www.cancernaturaltherapyfoundation.org/)



**Cuttings.**  
culinary & botanica

120 Main Street, Romsey  
Ph: 5429 3636  
Open Tuesday - Sunday

KITCHEN GARDEN HOME

## FREE CAR REMOVAL

Servicing the Macedon Ranges  
Phone Mick: 0430 446 605

## Pamela Kell

Remedial Massage Therapist, Level 1 Pilates Instructor  
SSNT/AAMT, Workcover accredited  
Relaxation, Sports, Remedial Massage  
Manual and Lymphatic Drainage  
By Appointment  
22 Goode Street, Gisborne  
**5428 1000 0408 093 098**



We are a premium reseller of all original printer cartridges.

Whether you need a printer cartridge for your home printer or a corporate laser printer, we've got the largest range of inks and toners in the Macedon Ranges



**\$AVE up to 10% for bulk buys**

Shop 5, 130 High Street Woodend  
5427 3092  
print@collieroffice.com.au

## Living In Heritage Houses In The 21st Century

A free four part lecture series will take place in Castlemaine's Phee Broadway Theatre on Wednesday evenings at 7.15 pm on April 14th, 21st, and 28th and 5th May this year run by the Mount Alexander Heritage Advisory Board with expert speakers. The series will focus on residential heritage housing. The aim of the series is to give a greater understanding and appreciation of heritage buildings in a modern context and will cover the following topics:

- Living in heritage houses - restoring, renovating and re-use of heritage buildings.
- Caring for old buildings - what to look for when buying, what can be done to address problems and using appropriate materials and techniques.
- Heritage planning requirements - heritage overlays, heritage register and heritage approval processes, including ways to avoid or minimise disputes.
- Sustainability and Heritage - building regulations, including new fire requirements, retro-fitting alternative power, water conservation, and where to go for advice.

The anticipated audiences are both existing and prospective owners of heritage buildings, building professionals, planners and Councillors and all those interested in learning about and preserving the ambience and fabric of our historic townships.

The lecture series is a new initiative supported by Mount Alexander Shire, the Department of Planning and Community Development and the Heritage Council. It is hoped that it will become an annual event and help provide a greater understanding of living with local heritage and the current planning system. Those wishing further information should contact mashab@iinet.net.au

## Macedon Ranges Florist

local, interstate & overseas deliveries



42B Anslow St Woodend P: 5427 2037

**BUSINESS FOR SALE, CALL LISA**

**BodyMinding**  
alexander technique: an education for living well.

### Alexander Technique

Reduce, manage or eliminate stress headaches, muscle and joint pain. The Alexander Technique addresses the underlying problems and puts you back into control for yourself.

**Margaret McGill has been teaching Alexander Technique for more than 20 years.**

Contact Margaret on **5428 6461**

· W · O · O · D · E · N · D ·  
**SIMPLY HEALTH**

[A'kin] & [Al'chemy]

Purist natural beauty & total peace of mind™



**FREE** Leave-in Conditioner  
 with any purchase of 2  
 A'kin or Al'chemy products  
 Shop 35A Anslow St, Woodend  
**PH: 03 5427 4237**

**Confessions Of An  
 Op-shop-aholic**

Jude's Preloved Jewellery is the culmination of over 25 years of collecting costume jewellery (amongst other things). In my twilight years I have come to the conclusion that it is time to (as my husband keeps telling me) "move it on".

My slightly huge collection consists of old pieces from the 1960s, 70s, 80s and 90s as well as current decade and modern bling. Sprinkled amongst these decades are some older pieces.

So if you would like to help me reduce my sizeable collection of very interesting jewellery please contact me. You can call me and arrange a viewing or I'm happy to come to a jewellery party at your place.

Contact Jude on 54271352

**News from the Woodend RSL  
 Women's Auxiliary**

Anzac Day 25th April will again see our RSL hosting the traditional Gunfire Breakfast at our RSL Hall at 7.30am, following the Dawn Service at the Memorial Cross. The free buses will transport you to our Hall where you can warm up on hot coffee and a well cooked breakfast all for a Gold Coin Donation.

Our own RSL Service will be held later in the morning and followed by refreshments supplied by our Auxiliary.

We look forward to catching up with old friends on Anzac Day, the one day of the year that we honour our Service personnel past and present. So please attend and keep our traditions ongoing for future generations. *Lest We Forget.*

Also, a thank you to all who patronised our Australia Day festivities and the Rotary Club for joining us for the festivities. Many thanks to the following; Scouts, Kyneton Municipal Band, Heskett CFA, Dean and Gary who entertained us with traditional music, our own RSL members and our very hard working Auxiliary. It was a very memorable day and next year we will again amalgamate with Rotary.

Our Dinner on 5th March was very well attended and our next Dinner & Entertainment will be held Friday 9th April. Please book early if you wish to enjoy a great meal and join in the fun. Bookings can be made by phone 5427 3122, 5427 2225 or 5427 1226.

Our Easter Egg raffle tickets are now being sold so buy a ticket and support our Auxiliary. There are three baskets of eggs as the prizes at \$1.00 a ticket. Keep an eye out for our members.

Submitted by Betty J. Barned Sec. Auxiliary

**SOLAR DIRECT**

- Solar Hot Water
- Grid Interactive Solar Systems
- Stand Alone Power Systems

**Ph: 1300 55 77 98**

**Mobile: 0411 269 489**

**Lancefield**

**Sand | Soil | Mulch | Pots | Pavers | Plants  
 Water features | Fire wood | Wine barrels  
 Hire Equipment | Synthetic turf | Sleepers**



42 Nursery Road Macedon 3440 Victoria  
 Email hello@nrgsupplies.com.au  
 Telephone 03 5426 2400 | Facsimile 03 5426 4972  
 General open hours Monday-Friday 7.30-5pm,  
 Saturday-Sunday 9-5pm. Arrangements outside  
 these hours can be made.

**FAIRHURST CONVEYANCING**  
 and Secretarial Services

For all your  
**Property Transfers**  
 Ring Sue Fairhurst on

**5427 2382**

**27 Urquhart Street, Woodend**  
 MVCA & AIC

Licensee:  
 A. (Sue) Fairhurst  
 Licence No.:  
 000316L



Eenie?



Meenie?



Minie?



Moe?



Having trouble deciding  
which bills to pay?

# We Can Help

Consolidate your debt into one easy payment

The Mortgage Gallery  
Macedon Ranges

P (03) 4433 1090

F (03) 4433 1290

[mattroulston@themortgagegallery.com.au](mailto:mattroulston@themortgagegallery.com.au)

Matt Roulston - 0403 955 907

Finance Manager



**Wrap it up in one monthly payment!**

**Managing your family budget can be difficult when you're pulled in so many directions.**

We can help combine your bills into one convenient loan that meets your needs and is easier to manage.

Call us now for a pre-qualification by phone.

We'll set you up with FREE consultation to assist you in selecting the product for you.



# CENTRAL VICTORIAN TIMBER

- Timber •
- Sleepers •
- Treated Pine •
- Cypress posts •
- Hardwood •

Specialists in house  
lots and extensions

Phone: 5427 1090

Email [centralvictimber@bigpond.com](mailto:centralvictimber@bigpond.com)

Monday to Friday 8am - 5pm

Saturday 9am-12pm

# TIMBERSEARCH AUSTRALIA P/L

Specialist recycled  
& reclaimed timbers

Beams Posts  
Flooring  
Firewood

Recalimed Wharf and  
Woolshed Timber

Open Friday & Saturday

Phone: 0418 999 385

[www.timbersearch.com.au](http://www.timbersearch.com.au)

Also on site: Alltask Carpentry & Joinery

Ph: 0458 273 617

**988 Blackforest Drive Woodend  
(Old Sawmill Site)**

## Rotary Fundraising Luncheon

On Thursday April 22nd the Rotary Club of Woodend will hold another fundraising luncheon at a magnificent local home and garden and welcomes all guests for a wonderful afternoon of good company and great food all for a good cause.

The cost of attendance is only \$20 per person which includes a feast of lovingly made food including numerous cakes, all supported by champagne on arrival and a warm drink afterwards.

Please contact Melissa Hocking on 54271578 for more information or to book your place for the luncheon.

A raffle will be conducted and drawn on the day with funds supporting international projects. Raffle prizes consist of donations from some of the wonderful local businesses in Woodend.

The Rotary Club of Woodend is very active in the local community and support a range of local and international projects.

The Rotary club is always looking for new members. Anyone can be a Rotarian. We meet 7 pm every Thursday night at the Victoria Hotel in Woodend and welcome guests to come along and see what Rotary is all about. You can meet some great local people and learn more about Rotary and Woodend. We are definitely not formal or stuffy and have a lot of fun whilst doing great things locally and overseas.



All news items, articles and community news columns must be received by 15th of each month.

## Rotary Round Up

On Highland FM 100.7 radio 6-7pm every Thursday with Woodend Rotarian Peter Willmott. Rotary clubs or community groups need to contact Peter to get some airtime (0434 623 423). Got a message or event you want to promote? Just like to talk? All are welcome to the Rotary Roundup hour. Peter will make you comfortable and you may just have some fun.

## Contemporary Blinds

"Quality Blinds at factory Direct Prices"

- Latest Styles/Fabrics/Colours
- Sunscreen/Blockout Blinds
- Roller/Roman Blinds/Venetians
- Automated Blinds
- Professional Installation Team
- Exterior Awnings

Ring Now for a **Free** In House Consultation/Quotation

Mark 0437 759013 Woodend Simon 0458 338995 Keilor East

*Where Style is Affordable*



kills the majority of fire victims. When asleep, our sense of smell is largely diminished, and we're unlikely to smell smoke. The smoke may also put occupants into a deeper sleep, so a smoke alarm actually helps wake you. And, with all of the plastics, materials, electronics and chemicals around - house smoke can be extremely toxic.

Here are some interesting home fire facts:

- One in five Australians have experienced a fire in their homes
- Research has shown that the absence of a smoke alarm can increase the possibility of a fatality by 60%
- While 45% of properties visited had smoke alarms installed, 31% of those were not functioning with the batteries flat or even removed
- About 64% of house fires were unintentionally lit
- Around 56% of these started in the kitchen during cooking and a further 15% the result of electrical faults
- In more than 95% of metropolitan household fires someone was home at some stage during the fire

To ensure you have a working smoke alarm:

- Test it weekly by pushing the test button with a broom handle to make sure it beeps.
- Dust the alarm with a vacuum cleaner brush.
- Change the battery at least once a year.

There are two types of smoke alarms

Ionisation alarms that predominantly detect the presence of extremely small particles of smoke, and newer photo-electric alarms that detect visible smoke.

Research indicates that although both types of alarms give occupants time to escape, photo-electric alarms are

consistently more effective at detecting smouldering fires in homes. It is recommended that residents supplement their existing ionisation smoke alarms with photo-electric alarms.

For more information please visit: [www.cfa.vic.gov.au](http://www.cfa.vic.gov.au) or [www.buildingcommission.com.au](http://www.buildingcommission.com.au)

### **Royal Children's Hospital Appeal Collection on Good Friday**

The CFA will once again be collecting on behalf of the Royal Children's Hospital on Good Friday April 2. We will begin collecting at soon after 9am and will cover as much of the Woodend and Newham areas as we possibly can during the day. The Woodend Community is normally very generous and we're sure this will continue. If you are not going to be home on Good Friday, you can drop donations off at the Woodend and Newham Fire Stations.

Thank you to the Woodend Bowling Club.

The Woodend Bowling Club recently held a Social Day for the Woodend CFA attended by more than 50 members of both organisations. A very entertaining day was had by all, culminating in an excellent BBQ and a generous donation from the Club to the CFA.

For further information contact Captain Mick Christie on 0419 870 601 or 1st Lieutenant Mike Dornau on 0409 093 935. Or call the Woodend CFA on 5427 2356, visit the station in Urquhart Street or our website: [www.woodendcfa.org](http://www.woodendcfa.org).

The Woodend CFA is a volunteer emergency service, committed to Creating a Safer Community.

Submitted by 1st Lieutenant Mike Dornau, Woodend CFA

## **THE WATERBLOKE** Water Saving Solutions

The Water Bloke Specialises in

- Rainwater Tank Installations,
- Tank To Toilet connections,
- Grey Water Recycling,
- Septic Systems
- Garden Reticulation.

We're based in Woodend, so call us for a free consultation and Water Audit of your home.

**BEAT THE DROUGHT THIS SUMMER** and Contact us at [www.thewaterbloke.com.au](http://www.thewaterbloke.com.au) or on [thewaterbloke@gmail.com](mailto:thewaterbloke@gmail.com)

Contact Craig (author of the best selling book "Every Last Drop: The Water Saving Guide) on 1300 650 947 or 0410 275 714



*"for all your water needs"*

## **WWW.WHAT'S NEW AT ZAPPA-DO**



### **HOORAY!**

**Our new website is now online.**

New items will be added regularly so make sure you check them out. It's now easy to browse and then shop online. Or come in and see us in person.

**Instore April Special:** \$10 OFF Waverley Australian wool blankets and throws, including special orders and doonahs. **What's NEW at Zappa-do:** Mother's Day Gifts, bath toys, PJs, bamboo baby linen.

**ZAPPA-do** *Baby and You!*  
Shop 3, 87 High Street, Woodend. Ph: 5427 1270  
or visit our new website at: [www.zappado.com.au](http://www.zappado.com.au)

## Woodend Senior Citizens

Plenty of activities for all: Tuesday – Bingo (Win a Gift) 1:30pm; Friday – Carpet Bowls, 10:30am, Cards 1:30pm. Our general Meeting and Trading Table – Friday 9th April at 11am, Followed by Lunch (Bring your own), then a fun afternoon with cards at 1:30pm

Monthly Bus Trip: Mont the Lancey Historical Home and Museum at Wandin, 12th April, Booking necessary.

Givoni Ladies' Fashions – All Garments \$25. To be held at Woodend Community Centre, Tuesday 20th April at 1:30pm. Entry \$3. Be lucky, win the Door Prize. The club is saddened by the death of Queenie Head; our longest serving member and past president. Members please join in our activities and new members are most welcome.

submitted by A. Warnock President, Woodend Senior Citizens  
5427 1644

## Nowhere to meet?

Looking for a venue to hold a party, workshop or meeting? The Woodend Tennis clubhouse is available for hire. Casual users pay \$25 per hour, while permanent bookings cost \$15 per hour. The fee includes heating, cooling and use of kitchen and bathroom facilities. For more details ring Nadine on 54271571.

### **Kerri Hendriks**

### **House cleaning**

**Looking for permanent work**

**Weekdays from 9am – 5pm**

**\$20 per hour**

**Minimum 3 hours cleaning**

**Please note no equipment or  
cleaning products supplied**

**Call Kerri 0403 685 060**

## Kyneton Physiotherapy

ROBERT ROUSE

B. App. Sc. (Physio) Member A. Physio. Assoc.

**Move Well. Stay Well!**

Registered for Comcare, TAC, W/Cover, Vet. Affairs  
NO REFERRAL NECESSARY

74 High St., (Corner New St.,) Kyneton

**20 years on High Street! 5422 2290**

## CHINKA STEEL CONVEYANCING

**(HEP Steel, Solicitor)**


**FOR ALL YOUR**

**PROPERTY SALES AND PURCHASES**

**RING CHINKA ON**

**03 5427 2477**

**74 HIGH STREET WOODEND 3442**



**Turned over any New Leaves lately?**

Woodend's Favourite Bookstore also stocks a beautiful range of Homewares, Furnishings, Garden Equipment and Toys.

We welcome Special Orders and Lay-Bys, and Gift Vouchers are available.

Cnr Anslow & Collier Sts, Woodend  
5427 3772  
Closed Mondays

## French language tutor required for 2 young children

Write to P O Box 816 Woodend VIC 3442  
or call 0425 792 554 for further information

Regular business card advertisements (90mm x 55mm) are \$45 inc GST per month - book & pay 11 months and get 10% off.

## AGRICULTURAL CONTRACTOR



### PHILIP BEATTIE PTY LTD

Located in the Macedon Ranges and servicing a wide surrounding area, Philip Beattie Pty Ltd can provide you with the latest equipment and operators for you to produce the best in

- CROPPING
- SPREADING/FERTILISING
- PASTURE RENOVATIONS
- ZERO TILL RENOVATIONS

**Now with the added feature of an Outback GPS Guidance System to enable full and accurate mapping of your paddocks**

At Philip Beattie Pty Ltd we can also provide you with all your hay making requirements supplying

- Mowing
- Raking
- Teddering
- Large Square Bales
- Round Bales
- Small Square Bales
- Silage Wrapping

Contact:

**Philip Beattie Pty Ltd**  
45 Millers Lane  
Newham Vic 3442

Ph/Fax (03) 5427 0702 Mobile 0419 573 226  
nsbeattie@bianond.com

# Heritage Society News

This is not the first letter we have republished from "Onlooker" to the Editor of the Woodend Star. Who was he or she, - we have always had our suspicions! Was this unidentified letter writer the Editor himself commenting on subjects bound to stir up opinions around the district and thereby add to his sales? We will probably never know but whoever "Onlooker" was, his or her comments on everyday life and issues of sixty or seventy years ago make fascinating reading today. "Onlooker" wrote the following letter to the Editor the 10th March 1936.

WOODEND RE-VISITED (To the Editor)

Sir, - May I be permitted to express through your columns something of my feelings when I revisited your town recently for the first time since I ceased to be a resident there, some years ago. The Woodend which I left was a thriving community in which each individual was an enthusiastic supporter of his or her town, keenly interested in its welfare or future. And all the time, there were people to be seen in the street. The Woodend which I saw during my recent visit was somnolent and lifeless. Its citizens seem no longer to care what happens to their town, either now or in the future, nor, in many cases, do they support it.

There seems to have crept in a desire on the part of many of the people to buy in Woodend only those things which they can't very well get elsewhere. This cannot be the fault of the goods which the storekeepers are offering, or the prices. I have been in a great many Victorian towns, and, in all classes of commodities, prices in Woodend are undoubtedly the equal, at least, of any I have seen elsewhere. The goods, of course, are just the same goods. People in the streets are remarkable by their absence. A casual observer would imagine that a plague had broken out, causing nearly everybody to be quarantined in their homes.

A friend told me that, in his opinion, this was caused by the fact that competition among the local grocers was so keen that they were calling for and delivering orders almost every day of the week, thus largely obviating the housewife's need for coming into the street. If this is so, they are actually cutting off their noses to spite their faces, for it is one of the best known axioms of business that the customer who buys most is the customer who shops in person and can be tempted by display.

Even the sporting bodies appear to be in the doldrums. Everything, in fact, points to a lamentable lack of civic interest and civic pride. Wake up, Woodend! What is the matter with you? At the present rate of progress, Woodend will soon resemble Karlsruhe in size and importance, and in what it has to offer in the way of recreation and entertainment. You property owners, what is going to happen to the value of your property if Woodend goes on declining? It is in the interests of all the their town in every possible way, and thus once again make it the thriving, prosperous community which it was. Yours etc.

ONLOOKER. Hawthorn. 10/3/1936

Can you help? Work continues a pace on our history of all those from the district who went to the First World War. Some wonderful information has come to light, including letters written from the front, but there are still many on our list whose stories remain a mystery. Please ring the Centre on 54273361 on a Wednesday if you can help, or better still, call in and talk to Sylvia Boxshall who is coordinating this big project.

Submitted by Janet Hawkins



**MACEDON RANGES BUSINESS CENTRE**

- MRBC members special
- adhoc days at permanent day rates
- throughout public school holidays

**SCHOOL HOLIDAY BONUS**


03 5460 8404 [www.mrbuscentre.com.au](http://www.mrbuscentre.com.au)



**JULIE ANN WARD**  
Visiting Hair & Beauty

*"Home service with a smile"*

9 Ashbourne Road  
Woodend Vic. 3442  
P: 5427 1538  
M: 0423 676 415



- Grid connected domestic solar systems
- Stand-alone solar & wind generator power systems
- Farm & residential solar gate openers
- Solar bore, dam & tank pumps
- Garden & landscape lighting

**Design & Installation of Renewable Energy Systems**

Tired of getting out of your car to open and close your gates?  
Automatic Solar Gate Openers

**Single: \$1700 \***      **Double: \$1900 \***

Why not open your gates from anywhere in Australia using your mobile phone?  
GSM wireless intercom / access control

**AC Model: \$900 \***      **DC Model: \$995 \***

\* Fully installed GST included, subject to site inspection

Contact: **Ray**  
Telephone: **5426 2574** Mobile: **0416 085 276**  
Email: **raypaul.solarplus@gmail.com**

TITAB T08698 - BCSE P2026

## Valentine's Day Car Show

For the past 23 years on the second Sunday in February the Macedon Ranges & District Motor Club have been holding a car show and picnic day at Hanging Rock. The show's theme is about a family day and a place to show your old car. The show is testament to the club and its group of dedicated volunteers that have made it such a success over the years.

Each year folks and car clubs alike from near and far gather the family pack the picnic lunch and crank up the "old girl" to make their way to the rock. The day has grown to become one of Victoria's largest and most regarded car shows. This year was no exception with display cars queuing at the gates for a 7.30am start. During the morning the open areas of the rock slowly filled with vintage and classic cars of all makes and models. Many of the owners are as proud as punch showing off the old girl, talking car stuff with other car enthusiasts and answering the typical car stuff questions.



The rocker cover racers are a favourite for the kids and if that doesn't work there's always the miniature train ride or the animal nursery. And for the more adventurous and energetic, you can always attempt to climb the rock.

Then by mid afternoon the steady flow in turned to a steady flow out, most of whom vow to do it all again next year on the second Sunday in February, February 13th 2011. The final count for the day was about 2250 display cars and motor bikes and around 10 thousand people enjoying a great family day in perfect weather, blue skies and 25 degrees.

## TRADE & SERVICE DIRECTORY

### AIR CONDITIONING

## SPLIT SYSTEMS INSTALLATION AND SALES

Efficient heating & cooling  
For free quote, phone Dave  
DW Air 0407 248 454

### BUILDER

Mark McCartney  
Baiaime Nominees Pty Ltd

Period & Modern  
Construction  
Kitchens, Bathrooms,  
Renovations, Decks, Pergolas,  
Home Maintenance,  
Complete Project Management

Phone: 0411 555 925  
E-mail: baiame1@optusnet.com.au

### ELECTRICIAN

**Macedon Ranges  
Electrics**  
REC 17836  
MasterCard  
VISA  
5422 2182  
Split System Air Conditioning  
Television/Data/Antenna  
All Electrical Installations  
Contact Dan McCarthy 041754 2235  
31 Redesdale Rd Kyneton

### ELECTRICIAN

**BROWN  
electrical  
services**  
REC 17439  
All typed of electrical work  
Kyneton, Woodend & surrounding districts  
"no job too big or small"  
Travis Brown 0400 035 442  
P: 5422 2568 F: 5422 6908

### EXCAVATIONS

Bobcat & Excavating  
Truck & Trailer  
Handyman Services  
Garden Design  
Mowing  
Fencing



Robert

0401 605 488

### GARDEN MAINTENANCE

*Garden Restoration  
& Maintenance.*  
Excellent rate and  
outstanding work ethic  
Creative flair  
Call Damian 0407 697 333

### HANDYMAN

**Rowdy's Handyman Services**  
Home & Garden Maintenance  
No Job Too Small!  
• Carpentry,  
• Plastering,  
• Tiling  
• Painting  
P 5427 0072  
M 0416 274 732

### JEWELLERY

## Jude's Preloved Costume Jewellery

Vintage & modern pieces

View by appointment or arrange a  
jewellery party with friends at your home.  
Contact Jude on 5427 1352



### PAINTING

**GEE'S  
Painting etc.**  
Call Steven  
0402 079 482

### PSYCHOLOGIST

**Sam Luxemburg**  
Registered Psychologist  
• Personal Counselling in Woodend &  
Romsey (Medicare rebate available)  
• Counselling Training  
• Myers-Briggs personality testing  
Phone: 0428 270 401  
www.luxcollege.com.au

### SPACE AVAILABLE

Space is still available  
in the Trades Section.

Great exposure at just  
\$30 per issue.

Call Alexia for further information 5427 3092

# TRADE & SERVICE DIRECTORY

## ANIMAL CARE



**Macedon Ranges Pet Care**  
An alternative to kennels & catteries  
A reliable home care service for pets & farm animals, servicing the Macedon Ranges since 2003  
Phone Judy on 5427 1352

## ANIMAL CARE



**DIANNE'S PET SITTING SERVICE**  
Your pets lovingly cared for in their own home  
Woodend and Macedon  
Phone: 0419 326 281  
E-mail: [dianne@woodendpetsitting.com](mailto:dianne@woodendpetsitting.com)  
Web: [woodendpetsitting.com](http://woodendpetsitting.com)

## BOOKKEEPING

**BEV ROBERTS**  
BOOKKEEPING SERVICE

5427 3372  
0425 134 940  
[roberts\\_bev@aapt.net.au](mailto:roberts_bev@aapt.net.au)



## COUNSELLING



Phone: 0417 011 300  
Email: [kezallan@ozemail.com.au](mailto:kezallan@ozemail.com.au)

**COUNSELLOR**

Grief & Loss  
Trauma  
Stress, anxiety & depression  
Anger management  
Workplace issues  
Behavioural problems

## COMPOST

### SIMPLY COMPOST

BRING YOUR GARDEN TO LIFE. SUPPLY NUTRIENTS, HELP THE SOIL STRUCTURE, SAVE WATER  
ORDER SOME COMPOST TODAY  
**ONLY \$8 PER 30 LITRE BAG**  
FOR MORE INFORMATION OR TO PLACE AN ORDER PHONE ROSS: 03 5427 0867  
EMAIL: [SIMPLYCOMPOST@LIVE.COM.AU](mailto:SIMPLYCOMPOST@LIVE.COM.AU)

## DRESSMAKER

### Beryl's Tailoring



DRESSMAKING, ALTERATIONS,  
BRIDAL, EVENING & DAY WEAR,  
LADIES AND MEN'S REPAIRS

Beryl Bachelor  
QUALIFIED DRESSMAKER, NEWHAM  
BY APPOINTMENT ONLY  
MON TO FRI 9 - 5

5427 0568 0418 510 179

## EXCAVATIONS

### Cheap'n'Neat Excavations

Bobcat/Excavator/12m Tipper hlre  
Post hole digger  
Rubbish removal  
Free Quotes  
Contact Les 0418 556 634

## EQUINE SPORTS THERAPY

**EasyCare Hoof Boots**

Hoof Boots from \$110

Saddles from \$275 kids

**Barefoot & Freeform Treeless saddles**

Hepburn Equine Sports Therapy  
Woodend [www.hest.com.au](http://www.hest.com.au) 0419 326 281

## FIREWOOD

### O'Callaghan Bros

REDGUM FIREWOOD SUPPLIERS  
SPLIT RED GUM  
FIREWOOD

Excellent Quality Delivered Dirt Free  
Ph 7 days  
0407 036 800 0429 957 091

## MASSAGE THERAPY

### mg mobile massage

- Deep tissue • remedial •
- sports • pregnancy •

Weddings Workplace  
Corporate Private Call Mark  
0407 223 443

## HOME MAINTENANCE

Home maintenance & landscaping  
service including decking,  
pergolas, carpentry & painting.  
Stuart 0409 150 629  
AH 5427 2465

## METAL GATES

**BVM Metalcraft**  
SPECIALIZING IN OLD WORLD AND  
MODERN STYLE GATES  
STEEL BALUSTRATING INCLUDING STAINLESS STEEL  
ROPE AND WROUGHT IRON, PUNCHED RAIL FENCING  
ALL MATERIALS USED ARE  
GALVANIZED OR ZINC PLATED  
FINISHED IN YOUR CHOICE OF POWDERCOAT  
OUR DESIGN OR YOURS  
METAL POLISHING - ALLOYS, BRASS, STAINLESS STEEL  
CONTACT BEN 0422 288 768  
FOR A FREE QUOTE

## STONELAYING & PAVING



Stonemason & Paver  
specialising in

- Retaining Walls
- Drystone Walls
- Stone Houses
- Paving
- Over 20 years' experience

Cameron Dunn  
Ph (03) 5427 4778 Mob 0429 162 589

## TREE SERVICES

**A&P Tree Services**

- tree pruning / removal • stump removal
- tree planting / transplanting • rope & harness climbing
- confined space removal • fully insured

Professional commercial & residential tree maintenance  
all work carried out by qualified arborist  
Call Anthony 0417 059 969

## WRITING SERVICES

a few good  
**WORDS**

Editorials, Publicity, Advertising, Proof-reading, Letters.

Nadine Hartnett  
Freelance Writer 0439 399 838  
[nhartnett@blapond.net.au](mailto:nhartnett@blapond.net.au)

# SPORTS NEWS

## Woodend Golf Club

March was a successful month for the Lady members. Rosa Baernreuther went to Dunedin in New Zealand to play in the Masters. She was successful winning a Bronze Medal. Jan Graefe, Pam Burton and Dawn Elder won the Buninyong Bowl, and Jan was also a winner teaming with Dawn Elder to win the Golden Putter at Clifton Springs. Dawn Roberts won the club Singles Knockout defeating Kathy Keating 3/2. Pennant starts on April 12th. The ladies have two teams and they will travel away as far as Yea and Alexander.

submitted by Chris Doherty, Ladies Captain.



**Woodend Health & Fitness**

- Wide range of equipment
- Group fitness classes available
- Teen's Gym sessions available
- Personal training available

*Start your fitness campaign today*  
 30 Wood Street, Woodend  
 Phone Brian on 5427 1181 or 0488 016 709

## Tennis players wanted

Teams are being entered by Woodend Tennis Club into the Mixed Open and Junior winter competitions, starting in April.

The juniors play at courts across the Macedon Ranges on Saturday morning and the open matches are held during the afternoon.

Interested players can contact Nadine (Open) on 5427 1571 or email Murray (Juniors) at mfr60244@bigpond.net.au The club also participates in Midweek Ladies and Night Open competitions.

# Welcome to the Woodend Star Kids Club

## April Birthdays

2nd	Pip Southey	Turns 9
7th	Cooper Ormerod	Turns 9
11th	Scarlett Southey	Turns 11
11th	Simon Ross	Turns 12
11th	Alisha M Sturt	Turns 13
12th	Adele Gehling	Turns 7
13th	Thomas Dale	Turns 5
13th	Burry Smith	Turns 14
14th	Jack Hayward	Turns 11
16th	Molly Spencer-Stewart	Turns 7
18th	Emilee Tia Anderson	Turns 13
18th	Oran Callaghan	Turns 1
22th	Jordan Deleeuw	Turns 11
24th	Meghan Norman	Turns 8
27th	Kaleb P. Gabauer	Turns 13
29th	Brandon Lee Gabauer	Turns 11

## Happy Birthday Everyone!

### JOIN THE WOODEND STAR KIDS CLUB

Fill in your details below and place in the drop-boxes. Age limit is restricted to 13 years old and under.

Full name: \_\_\_\_\_

Address: \_\_\_\_\_

Date of Birth: \_\_\_\_\_ Age: \_\_\_\_\_

Phone: \_\_\_\_\_

**You can collect your birthday surprise by visiting Collier Office & Business Assist in the 19th Hole shopping centre**

## CASTLEMAINE—GISBORNE CLEANING SERVICE

CHRISTINE ADAMS, FRYERS ROAD, ELPHINSTONE 3448

**Carpet Cleaning Specialists**  
**Duct Cleaning, Window Cleaning, etc.**  
**For all your cleaning requirements**

- no job too big or too small -  
*obligation-free quotes*

**Tel: 5473 3307 Fax: 5473 3310**

**Mobile: 0419 006 591**

## MASSAGE THERAPY

Natalie Taranto

Reconnect and Restore the Flow Within

### Remedial Massage Therapist

- Deep Tissue
- Relaxation
- Pregnancy
- Reiki

**Now at McCubbin Cottage**

58 Urquhart St. Woodend

**\$10 off initial visit**

Call for an appointment

**0402 534 983**

mobile massage also available



The New Woodend Star aims to provide a voice for Woodend residents, Community groups and Businesses. Editorial and publicity for community events is free, and all other contributions or business advertisements are most welcome.