

THE NEW WOODEND STAR



Circulation of 3190 throughout
Woodend postal district, Newham, Hesket, Ashbourne,
North Woodend, Hanging Rock, Carlsruhe, Cobaw.

AN INITIATIVE OF THE ROTARY CLUB OF WOODEND

November 2009

A Monthly Community Periodical

First Publication 1997

Volume Thirteen No.10

Helicopter Assists with Works at Hanging Rock

A helicopter visited the Hanging Rock Recreation Reserve last week to assist with works to upgrade a section of the walking trail that winds its way to the top of the Rock.

The 70 metre section of the walking trail – on the western side of the Rock – has eroded over time and is located in terrain which makes it difficult to transport materials in on foot.

The works, funded by the Department of Sustainability and Environment, involved approximately 20,000kg of materials being airlifted into place.

Access to this area is restricted whilst works are being completed; however access to Hanging Rock Reserve and other sections of the Rock remain open.

It is anticipated that works will be finished by the end of November.



A helicopter prepares to take its load of dirt to the top of Hanging Rock

Woodend Landcare

What a terrific couple of planting days we've had, we would like to thank publicly those who helped in many various ways.

On a very cold Sunday September 27th about 30 volunteers planted 500 plants around the Weir at Shirley Park, and on the bank of the creek at the Five Mile Creek Reserve.

Then on a beautiful October 11th, we joined with the Woodend Children's Park to plant 500 of ours, and about 1000 of their plants on the banks of the Creek opposite and just upstream of Campaspe Park.

There were around 100 volunteers plus about the same number of kids present at this event, and the amount of work done was amazing. There was total cooperation between the two groups, and a real sense of camaraderie and achievement.

Many people and organisations deserve to be thanked:

Woodend Lions Club provided a sausage sizzle lunch on both days.

Members of the Rotary Club of Woodend joined the planting. Kel and Lois Gordon brought along their generator on October 11th, so we had plenty of cups of piping hot tea and coffee all day. To go with the tea and coffee there were gorgeous cakes and goodies donated by Bourkie's Bakehouse and Woodend Bakery Cafe.

Woodend Bowling Club loaned us their urns, without which the water would NOT have been piping hot.

Macedon Ranges Shire Council loaned essential tools, and provided a 'portaloo' on September 27th.

Those are the people outside the two organisations whom we thank most heartily. There were also the members of both groups who made it happen. Landcare had excellent rapport and cooperation with Jane Walduck and Kellie Duff from Woodend Children's Park, who were responsible for the detailed planning on their side. On our side, David Gossip put in a ton of work, and several others of our committee members contributed big efforts. However, I have to say that the person who carried the major load was Peter Yates. The whole thing probably would not have happened without Peter; if it had happened it wouldn't have been one quarter as effective.

He put in many hours of work to make up the plants lists, order them and the plant guards, take delivery at his home and water the plants, organise the sorting into boxes for each site area, etcetera, etcetera ... an absolute massive workload, and I don't know how he survived it!

Peter, you've helped organise major events for us before, but I reckon this one is the best ever! We all owe you a huge Thank you!

Other Bits & Pieces

We won't be having our usual fourth Sunday working bee this month. There will be one in November, but it may be a twilight/Friday evening one. Linda should be back on deck

continued page 2

from page 1

after exams so she will do a proper Newsletter before then to let everyone know.

Those who live on the South side of Mt Macedon Road, don't forget that Bert's crew are busy every Thursday morning. They're going flat out to get as much fire-hazard clearing done as possible while it's still burn-off season, and in the process making it easier for native species to survive and flourish. The wildflowers are coming along. I've seen Early Nancies, Bulbines, and Golden Moth Orchids, others have seen a Tetratheca and Pimelia. They're there in the untouched land, and we're helping them recover.

Also, don't forget to get rid of as much gorse, broom and blackberry as you can. They're amount the worst fire hazards in a fairly well-settled area like this, and are not too difficult to eradicate permanently with the right techniques. And finally, once again, thanks to all involved in our work, and to the people and organisations that support us. The community spirit in this town is truly splendid!

Submitted by Jo Clancy.

All news items, articles and community news columns must be received by 15th of each month.

SUBSCRIBE TO THE NEW WOODEND STAR

Do you live outside the *New Woodend Star* distribution area? be sure to receive your copy every month by subscribing. A yearly subscription of 11 issues is just \$27.50. Post to *New Woodend Star, C/- The Bank, 75 High Street, Woodend 3442.*

Name: _____

Address: _____

Phone: _____ Enclosed: Cheque/Money Order for \$27.50

The New Woodend Star

An initiative of the Rotary Club of Woodend Inc.
The Bank, 75 High Street, Woodend, Vic. 3442
ABN 32 685 225 161 No. A0021518E

Layout & printing by **Woodend Copy Centre**

For people wishing to submit stories, articles, letters to the publication, simply place the information in the strategically placed drop-boxes.

These are located at the Liquor Shop,
Collier Office & Business Assist, The Bank @ 75 High Street
and Woodend Newsagency.

EMAIL articles preferred: sales@collieroffice.com.au

Circulation: 3190 copies throughout Woodend and district

Disclaimer: The opinions and views expressed by the contributors are theirs alone, and do not necessarily reflect the views and opinions of the Committee of Management, or the Rotary Club of Woodend.

The Committee reserves the right to edit articles for length and clarity.

Committee: Barry Napthine, Ivor Johnson, Claudia Green, Irene O'Duffy, Alexia Downie, Joy Barker and Jane Watters.

Closing date for inclusion of articles or advertising for each issue is the 15th of the month prior to publication.

Advertising available

For all bookings and artwork submission please contact Alexia 5427 3092.

Artwork to sales@collieroffice.com.au

This newsletter is supported by



ADVERTISERS PLEASE NOTE:

Unless specific dates are given for inclusion - all advertisements will be placed and charged for until notified otherwise IN WRITING.

Australia Day Awards and Celebrations

Do you admire someone in your community? Do you think someone is wonderful, inspiring and generous? We need to know who that person is!

Every year, on behalf of the Australia Day Council, Macedon Ranges Shire Council, celebrates vital and vibrant members of our community.

Awards are presented to acknowledge both people and events which contribute to the fabric of our region, our communities and our lives. Categories include; Citizen of the Year, Young Citizen of the Year, Community Achievement and Community Event.

If you know someone who makes your world seem happier, healthier and stronger nominate them for an award.

And if you attended an event which made you proud to live where you live, nominate the event for an award.

Many towns in the Macedon Ranges host Australia Day celebrations. Some start early, some finish late. Last year you could have participated in a heritage walk and plaque dedication ceremony in Woodend, just after enjoying a free barbeque breakfast, a parade of flags and musical entertainment.

Council offers grants of up to \$500 to community organisations interested in conducting Australia Day Celebrations. If you would like to put your town on the celebration map we would love to hear from you.

Application and nomination forms are available at all Council Service Centres, at www.mrsc.vic.gov.au or by contacting Kate Strahan on 5422 0345.

Hurry nominations close on Friday, 30 October

Advertising Rates for 2009

New advertising rates per month from 1/1/09

All rates include GST & are priced per month.

- Business card** (55mm x 90mm) \$41 inc GST
- Trade Page** \$27 inc GST
- Quarter page** (90mm x 134mm)..... \$90 inc GST
- Half page** (90mm x 277mm)..... \$160 inc GST
- Full page** (190mm x 277mm) \$280 inc GST
- Insert** (of your printed brochure)..... \$180 inc GST

Advertisers: Please note - it is in your interest to book and pay for a year in advance, as a 10% discount applies to any full year pre-paid booking.

Any existing pre-paid ads will revert to the new rate on completion of the pre-paid period.

Information for advertisers

Any accounts queries can be made to Joy on 5427 4089 during office hours.

Mail should be directed to: New Woodend Star, C/- The Bank, 75 High Street, Woodend 3442.

Drop boxes for articles are at: The Bank (75 High Street), Woodend Newsagent, Collier Office & Business Assist and Marks' Liquor Shop. Copies of the publication will also be available.

Woodend Star Publication Dates for 2009

Dec / Jan 30th November

Advertisers and contributors are reminded to book in by the 15th of the month with artwork to follow immediately. Changes to advertisements, new advertisements or cancellations should all be made by email or in writing.

Teddy Show fully booked for 2010

The 2009 Woodend Teddy Bear Show on Sunday, October 25 was a growling success!

More than 800 visitors attended, bringing economic benefits to the town and creating a buzzing atmosphere over the weekend.

St Ambrose Parish Hall was packed with the best soft sculpture artists from Australia and New Zealand, some of whom sold out of the handmade bears and teddy bear/quilting/craft supplies at their stalls.

Early in the day the queue to get inside the show snaked beyond the school gate.

The 40 available stalls are already booked out for next year's show, which will be held on Sunday, October 31. We now have a waiting list of 15 artists desperate to get into the show!

This year the Woodend CFA volunteers again ran a barbecue and showgoers were happy to buy a sausage to support their firefighting work. The ladies from the CFA committee also put on some of the best home cooking ever tasted in the supper room and had plenty of delicious yo-yos to satisfy the masses.

Money raised from the main raffle and People's Choice award will support the upkeep of Dewi, a Sun Bear being cared for at the Phnom Tamao Zoological Gardens & Wildlife Rescue Centre in Cambodia after being rescued by Free the Bears Inc. Further proceeds will be donated towards Rupert, a brain damaged bear rescued by Animals Asia.

The Woodend Teddy Bear Show is organised by Kerri Botwood, who also runs Kerri's Bundle of Bears retail store in Woodend. Kerri's drive to hold the show comes from her desire to showcase quality handmade bears as

well as raise awareness of the plight of bears whose future would be bleak without the intervention of Free the Bears Inc. and Animals Asia.

Volunteer Sue Sullivan organises the competition aspect of the event, which attracts an exceptionally high standard of entries from novice to professional categories. The competition was judged by Trentham resident, Deb McKnight.

Sandra Wigzell, Editor of Bear Creations magazine, once again came down from Sydney for the show. Sandra opens the show every year and spends all day talking to the bear artists and collectors. We will see in the next few upcoming editions of Bear Creations quite a few articles on the Woodend Teddy Bear Show.



On the Saturday night before the show Schatzi's was again booked out by all the bear artists to meet and talk about their work. Kerri is grateful to Frank for donating many prizes for the event and preparing 40 lovely meals on time. Schatzi's is a much requested venue for the annual dinner.

The 2009 Woodend Teddy Bear Show again proved to be a wonderful event for people of all ages. It is clearly gaining a strong reputation for excellence among teddy bear and quilting enthusiasts while giving the broader community an appreciation of their talents.

The show is supported by many volunteers who spend the whole day working extremely hard. Kerri would like to thank the following for their time and hard work:

Family, Daniel & Ben Botwood, Rona Pulbrook, Alison Pulbrook, Anna & Paul Inkster, Samantha, Finn, James & Niamh Inkster, Jenny McMillan, Michelle McKinnon, Georgia McKinnon, Peter Hewett, Sue & Bob Sullivan, Deborah McKnight & Nadine Hartnett.

Submitted by Kerri Botwood & Nadine Hartnett

Woodend Rainfall Report 2009

Each month we add the rainfall details and the year to date total. Our rainfall report shows 2004, 2005, 2006 2007 and 2008 comparisons. Please note that your own rainfall readings may not exactly match these. These readings are the official BOM readings and have been taken in the same location in Woodend for many decades. All measurements are in millimetres.

	2004	2005	2006	2007	2008	2009	
January	21.2	47.4	49.8	83.5	17.1	0.0	Jan
February	6.2	72.2	53.1	27.4	22.1	0.0	Feb
March	19.0	5.8	20.6	35.7	25.4	32.3	Mar
April	41.2	18.8	46.4	20.2	20.4	38.6	April
May	39.3	13.6	58.8	95.7	43.7	32.5	May
June	98.0	116.7	36.0	105.1	88.7	56.0	June
July	93.8	76.9	91.6	83.3	112.5	91.9	July
August	76.1	125.0	30.8	34.8	52.2	104.8	Aug
Sept	31.7	55.2	50.6	49.8	42.0*	50.2	Sept
Oct	38.9	49.8	5.2	12.1	13.0*		Oct
Nov	111.0	72.4	13.0	91.0	67.2		Nov
Dec	144.2	40.0	31.0	101.2	96.0*		Dec
YTD:	720.6	693.8	486.9	739.8	600.3	406.3	YTD

Reminder: We are now on Stage 3A water restrictions.

Figures for 2008 include information from a different location indicated by *. This has resulted in a slightly different total than the official BOM totals.

For the year to date 31/09/09 there was rainfall of

406.30mm

1 inch = 25.4 mm therefore the total year to date is 15.9 inches

Cheap'n'Neat Excavations

Bobcat/Excavator/12m Tipper hire

Post hole digger

Rubbish removal

Free Quotes

Contact Les 0418 556 634

**WOODEND
NURSERY &
GARDEN SUPPLIES
OPEN 7 DAYS**

"LOCAL KNOWLEDGE FOR LOCAL CONDITIONS"
36 URQUHART ST, WOODEND
Tel: 5427 1866 Mobile: 0428 271 866

Full range of garden & landscape needs
Rock, Soil, Sands, Sleepers
Bobcat hire

Deck the street with fun and frivolity

You better watch out for WOOMBA – the Woodend Christmas Street Festival – on Saturday, December 5.

The festivities will liven up High Street between 9am and 4pm.

Fill your stocking with art, jewellery and handmade gifts including some unique Christmas items.

Get into the season's spirit with live entertainment, decorate your bike and try to win a prize, or ask a tarot reader what the coming year holds.

The festival will also feature wood turning demonstrations and lots of children's activities including an animal farm.

Individuals, schools and groups are invited to schedule performances and showcase their talent on an Open Stage. Businesses and community groups are encouraged to create floats for the parade or join the marching procession. The festival committee is happy to offer ideas.

High Street and the service roads between Anslow and Forest streets will be closed. For more details about having a stall or if you wish to help out on the day, please contact Julie on 5427 2250 or email: wilsonannan@mac.com

Pamela Kell

Remedial Massage Therapist, Level 1 Pilates Instructor
SSNT/AAMT, Workcover accredited
Relaxation, Sports, Remedial Massage
Manual and Lymphatic Drainage
By Appointment
22 Goode Street, Gisborne
5428 1000 0408 093 098



**FIREBIRD MOTOR REPAIRS
CAR WASH**

**31 URQUHART STREET
WOODEND 3442**

OPEN 7 DAYS
Phone: (03) 5427 2255

WARNER'S JEWELLERS

EST. 1912 ~ 4th Generation Jewellers

97 High Street, Woodend 3442
Tel: 5427 1573

**Manufacturing Jewellers and
Diamond Ring Makers**

*Stocking: Portmeirion, Whitehall,
Queens, Pimpernel, Royal Doulton,
Cherished Teddies, Royal Sengalor.*

CHINKA STEEL CONVEYANCING (HEP Steel, Solicitor)

**FOR ALL YOUR
PROPERTY SALES AND PURCHASES**

**RING CHINKA ON
03 5427 2477**

74 HIGH STREET WOODEND 3442

**All news items, articles and community
news columns must be received by 15th
of each month.**

AGRICULTURAL CONTRACTOR



PHILIP BEATTIE PTY LTD

Located in the Macedon Ranges and servicing a wide surrounding area, Philip Beattie Pty Ltd can provide you with the latest equipment and operators for you to produce the best in

- CROPPING
- PASTURE RENOVATIONS
- SPREADING/FERTILISING
- ZERO TILL RENOVATIONS

Now with the added feature of an Outback GPS Guidance System to enable full and accurate mapping of your paddocks

At Philip Beattie Pty Ltd we can also provide you with all your hay making requirements supplying

- Mowing
- Large Square Bales
- Small Square Bales
- Raking
- Round Bales
- Silage Wrapping
- Teddering

Contact:

Philip Beattie Pty Ltd
45 Millers Lane
Newham Vic 3426
Ph/Fax (03) 5427 0702 Mobile 0419 573 226
psbeattie@bigpond.com

Late Night Shopping

Christmas is coming and it's time for thoughts to turn to Christmas Shopping.

Throughout the year your local traders have been there for you with their smiling, helpful service and with their generosity, providing donations and prizes to many community groups and schools to help them with their fundraising activities. And we are getting ready to do it again, with your help.

It's time again, for the Woodend Late Night Shopping event. Local traders across Woodend will open late on Thursday December 10th to give you the opportunity to shop locally for Christmas and to support the local community.

Traders will offer specials and discounts to all shoppers who purchase tickets to the event. These tickets can be redeemed at Blue Orange Concepts or New Leaves on the night for a Christmas cracker. Four of the crackers will contain fabulous prizes. Tickets cost \$5.00 per person and proceeds will be spent on picnic tables and seating for the BBQ area of the new Woodend Children's Park.

Tickets are on sale at Blue Orange Concepts, Zappa-Do, Carismatic, Pink String and New Leaves up until the night.

Please don't take your Christmas dollars to Melbourne. Shop locally and support the traders that support you.

All news items, articles and community news columns must be received by 15th of each month.



T.J. SCOTT & SON Funeral Directors

- Serving the Macedon Ranges for almost 70 years
- Available 7 days a week, 24 hours a day
- Specializing in Pre-paid funerals

For further information, call the Scott family:
John, Kelly, Jack, Paul & Daniel.

5 Piper Street
Kyneton
54226455

46 Aitken Street
Gisborne
54284155

www.tjscottandson.com.au
info@tjscottandson.com.au

Macedon ranges wellness and longevity group activity up date

A very successful presence at 9: *The Expo* was achieved by various members of the group. Many people enjoyed the free products and invaluable information that was offered by the practitioners and it is anticipated that many people will enjoy the benefits of Booking Consultations with these skilled therapists.

It was again demonstrated that the area boasts a very diverse and high quality range of businesses and services that relate to preventing and healing chronic health and pain problems. For further information on becoming part of our group please call Marianne 5422 6937.

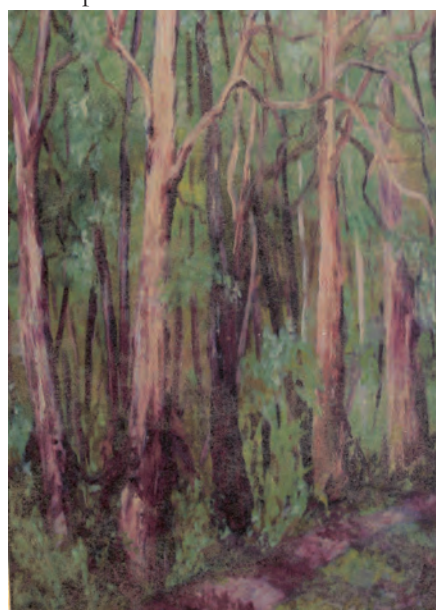
Group member Jennifer McDonnell has returned from a 5 week working trip to California. This included the successful launch of her work book at 'Gateway Books' in Santa Cruz and several television and radio interviews. A working relationship with SCORE a business mentoring program in Los Gatos (the heart of Silicon Valley) has been established to support the development of a retreat and rejuvenation centre in the Macedon Ranges. Strong interest has been expressed by several doctors, investors and financial planners. Interested local investors can contact Jennifer on 1300 737 146.

Macedon Ranges Art Group

The Macedon Ranges Art Group is preparing for its 14th Annual Art Show to run over the Melbourne Cup Weekend from Friday 30th October to Tuesday 3rd November.

The exhibition, commencing with a champagne and supper function on the Friday evening, will be opened by local identity Debbie Fleming who was recently awarded an OAM for services to the community. "We're delighted to have Debbie open the exhibition" said group president, Karin Bowler "our profits will again be donated to the Mt Macedon CFA where Debbie has been a volunteer for over 30 years".

Ms Bowler also added "The 2009 show will be even bigger and better with excellent new works from accomplished local artists and a wider range of styles and



White Gums - Macedon Ranges
oil, By Dawn Robinson

techniques on display. Several new members will be exhibiting for the first time in Mt Macedon adding further to the quality and diversity of works."

For further information on the exhibition or to receive an invitation to the opening night, contact Karin Bowler on 03 5426 2273.

Writers block-head.

So many rules.

Simply tell the story. Simple. I think, simple if you've been doing it for 20 years. Not so simple if you've been doing it for one, from home, on your own.

It's one thing to write a shopping list, but it's another to write this magazine story in 800 words.

I'll share this day with any fellow aspiring writers. You other clever things who've been doing it for 20 years can relax in your easy chair like Lucy Jordan, pour yourself a coffee and laugh heartily, feeling glad it's not you any more.

First of all, you need a great original opening. "The night was dark and ..." (Oh maaan).

Then tell the story simply and plainly. "I dunno mate. He just went and done this and then that happened and here we are".

Somewhere after the 15th cup of coffee, hit Edit, Writers Tools, Word Count for the 1500th time, and wonder how to make a short story long, or vice versa. Is it so interesting to tell that "that happened", or should it cut straight to "here we are"?

If we're lucky enough to have a writer or editor friend to help, then all the better. Begging can work, but money works better.

If they're kind, they'll come back and tell you to liven up the intro, put the ending in the middle and the intro at the end. Stop beating around the bush, and remove all the I's. Back to Square 2.

Somewhere in the distance, a child calls for its mother and the gentle smell of a burning pie wafts through an open doorway. Conversations from the television mingle unhindered with the words swimming in your head. Nouns, verbs, adjectives, pronouns, prepositions, acronyms and synonyms.

Symonims. Symanamens... Cinnamons? Why do I feel like a donut?

Edit, Writing Tools, Word Count, Spell Check, Save. Dear Editor. Attach. Send.

Oh Sugar..... The Pie !!!!

And so it goes. Many thanks to new Woodend-ite and very experienced journalist Sue Peacock for her kind and timely guidance, and to local fencer Neil Turner for allowing me to profile him. Oct/Nov Outback Magazine, Page 92.

Written By Kathy Mexted

Save Your Wardrobe
Save Your Pocket
Save The World

*Saving
grace
recycled fashion*

42 Anslow St Woodend T 0414524423 ABN 901869669

BGE

Joinery **Quality you deserve**

• Kitchens • Shop fittings • Bars

BRAD ELSE

Mob: 0412 355 548 Ph: 5422 2571

Factory 2/27 Redesdale Rd., Kyneton

Visit our Showroom 166B Mollison St, Kyneton

11am - 5pm Fridays or by appointment



Macedon Ranges Equine Vets

- Full equine services including x-rays, ultrasound and endoscopy
- Foaling down
- Microchipping
- Dentistry
- Lameness

0400 449 990 03 5428 1888

You have to hand it to Zappa-do



QUALITY GARDEN GLOVES

Protect your hands with our quality stretch Sprout Garden Gloves - made from comfortable goatskin and lycra, available in a range of colours as well as medium and large sizes. **LAST CHANCE** to order your custom-made Children's Chair to ensure Christmas delivery



ZAPP-348Z

ZAPPA-do Baby and You!

Shop 3, 87 High Street, Woodend. Ph: 5427 1270



*Need something special
for Christmas?*

Woodend's favourite Bookstore also stocks a beautiful range of Homewares, Furnishings, Garden Equipment and Toys

We welcome Special orders and Lay-By's and Gift Vouchers are available.

Cnr Anslow & Collier St. Woodend
5427 3772 Closed Mondays

PINOT & PEONIES

at

BRAEWATTIE VINEYARDS

351 Rochford Road Rochford

Saturday 21 and Sunday 22 November
11.00 am to 5.00 pm

With Peonies in full bloom to view and exclusive award winning Wines to taste, enjoy yourself at our open days in November.

Peonies as cut flowers and potted plants will be available
Wines to taste and purchase
Fra's Fabulous Foods will be available again this year

MAGGI and DES RYAN

Phone: (03) 9818 5742 or 54 291 266

Fax: (03) 9818 8361

e-mail: dryan@davies.com.au

Regular business card advertisements (90mm x 55mm) are \$41 inc GST per month - book & pay 11 months and get 10% off.

The Woodend Lions Village Market

September's market was a great success with most of the usual stalls returning and some new stall holders setting up for the first time.

Market Dates

Nov 15; Dec 20; Jan 17; Feb 21; Mar 21; Apr 18; May 16

For Market enquiries and bookings contact Alisa Howe 5427 2321.

Sausage Sizzles

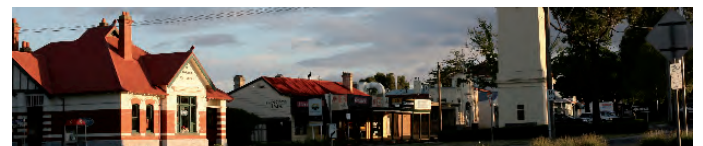
On Sunday 27th September the Lions Club provided a free sausage sizzle for the Landcare group. On Sunday 11th October the club provided a second free sausage sizzle for the Landcare group and interested people who were planting around the soon to be opened Children's Park.

Peace Posters

These will be collected from participating schools on Friday 30th October.

Carols by Candlelight

Our annual Christmas Carols is being held on the 13th December. Planning is well underway. Anyone wishing to take part in this programme should contact the Carols co-ordinator Janelle Robbins tobana@hotmail.com.au or leave a message on 5427 1704



ADVERTISEMENT

Donna Petrovich MP


State Member of Parliament for Northern Victoria Region

*Working for the
Woodend
Community*

Your Country Voice

5782 2011
84 Sydney Street, Kilmore

Authorised by D Petrovich, 84 Sydney Street, Kilmore.



Cuttings.
culinary & botanica

120 Main Street, Romsey
Ph: 5429 3636
Open Tuesday - Sunday



KITCHEN GARDEN HOME

Art Show

As usual the Lions Annual Art Show will be held on Labour Weekend in 2010. Watch this space!

For enquiries or membership details please phone of the following;

President: Liz Johnston 5427 1503

Secretary: Robyn Robbins 5427 1342


Treasurer: Terry Bowles 5427 0505

Woodend Lions Club PO Box 25, Woodend 3442

Submitted by Jillian Elwin




ZUMSTEIN



DESIGNER AND MAKER OF FINE FURNITURE AND JOINERY

"Third generation woodwork really shows"



Zumstein Pty Ltd
Factory 1/32 Brooke Street
WOODEND VIC 3442
Ph 03 5427 4579
Fax 03 5427 2284
Mobile 0412 138 364



 **bodywise**
UNDERWEAR
comfort for women ... everyday

www.bodywise.com.au
1300 66 17 66

Bodywise — the Comfort Specialists

Bras for real women of all ages and stages ... everyday, maternity and sports bras for extreme & high-impact activities.

Wire-free

Bras in sizes 10 to 28, cup sizes A to I (depending on style and brand)

Order online, by phone or visit our Woodend showroom for no-obligation, free fittings, appointments essential. 7-day exchange policy.

Gift Vouchers available



Snow Leopard & Purple Passion now available!



Stocking Bodywise & Anita brands
Next to the New Woodend Post Office, Shop 19, 130 High Street Woodend
Mon–Friday 9–4.30 & Saturday mornings 9–12

We Express Post Australia-wide

WOODEND
Proud to be Pokie-free

Paul Groves
Mobile 0414 928 491
Phone 5427 2171

Computer Sales, Repairs & Consulting

Home and Office Networking
Onsite Repairs and Maintenance
New Computer Systems

paul@pcweirdness.com

Music Lessons

Jacky Ogeil (B.Mus, B.Mus.Ed, M.Mus, PhD) is opening a music teaching studio in Woodend for all ages, beginners to University level.

Private lessons available in piano, harpsichord, theory, harmony, figured bass, accompanying, sight reading, aural training, exam/recital preparation, performance anxiety, music appreciation, music history and VCE.

Also available as an accompanist.

Taking bookings for 2010. Group theory and aural lessons available for special discount prices.

Contact: jackyogeil@ozemail.com.au

"Music is not an occasional social function – it's a basic necessity to have a civilised life and be a civilised person in a civilised world." Isaac Stern



Medical attention in Woodend on fire risk

☐catastrophic☐days of 100 +

To protect patients and staff from intolerable fire risk, the Practice will close its Brooke St. facility on days predicted to rate 100 or more on the new Fire Danger Index. We have been informed that the CFA are not in a position to defend the practice from external fire threat on such days.

As there will be several days warning about these ☐code red☐days, we will endeavour to contact any patients with pre-booked appointments.

What if I need urgent medical help?

A skeleton staff will answer calls for urgent needs on 100+ ☐code red☐days. We will have a special phone line for you to call. (Do not use this on other days as it will not be connected).

**On catastrophic fire risk days
the Practice will be shut**

**Call 0428 902 652
for urgent medical calls**

(ie. during 8.30am-7pm weekdays, 9am-12 noon
Saturdays & 10am-12 noon Sundays).

For all other times on these 100+ days
call our normal after hours Nurse Triage service
on 1300 55 75 12

Always call 000 in an emergency

Why has Brooke St. taken this action?

Brooke St. Medical Centre is committed to excellence in the care of both its patients and the staff it employs. We do not wish to draw patients into a facility that is not defensible against bushfire. Further, staff at BSMC cannot fulfill any services to their best ability when their own (or their dependents☐) safety is compromised.

In case of bushfire or any other threat, safety is the first priority.

Each patient and staff member must attend to their own safety (and that of their dependents) according to their own needs and circumstances.

What is the new Fire Danger Index?

This is a new statewide rating system aimed at helping us determine the level of fire risk and to enable us to act:

- **FDI 100 + is considered Catastrophic (code red)**
- FDI 75 ☐99 is Extreme
- FDI 50 ☐74 is Severe
- FDI 25 - 49 is Very High
- FDI 12 ☐24 is High
- FDI 0 ☐11 is Low - Moderate

The new CFA Fire Ready advice is:

On Catastrophic days ☐If you live in a bushfire prone area the safest option is to leave the night before, or early in the morning☐

This applies even if there is no fire in the immediate area.

For a full copy of the Practice's bushfire threat policy ☐please ask at reception.



Swine Flu Vaccination

The practice has swine flu H1N1 vaccinations - now available for those over the age of 10.

Those noted as priority groups are pregnant women; children aged 10 and over; people with chronic conditions such as asthma, diabetes etc.; obesity; health and community care workers; indigenous people; parents and guardians of children aged 0-6 months.

This vaccine is offered free of charge and normal consultation fees will apply.

Brooke St. Medical Centre ☐tel. (03) 5427 1002

Wildlife Friendly Gardens

Macedon Ranges Wildlife Network would like to thank the community, business owners and Libraries for making WAM – Wildlife Awareness Month, a big success again in 2009. All funds raised during WAM will go directly towards the rescue and care of our local injured, orphaned and displaced wildlife.

Along with the Macedon Ranges Shire Council we would also like to thank everyone that participated in the Shire-wide Koala Survey.

Now that the weather is mild it's time to look at Wildlife Friendly Gardens. More and more of our natural ecosystems are being lost to housing estates, new developments and vegetation clearing for fire protection.

Once the variety of life is reduced in our local areas, local biodiversity is reduced and the animals and birds that relied upon these natural habitats for food and shelter are forced to look elsewhere for resources to service.



Sugar Glider

In the Macedon Ranges and surrounding areas we are lucky to have many forest areas and reserves, and landholders that appreciate the benefits of retaining natural habitat areas on their properties. But with the increasing numbers of people moving to the area and new housing developments much habitat is either disturbed or destroyed.

We often feel helpless in stopping the destruction of natural ecosystems. Yet through creating your own wildlife friendly garden, you can make a difference!

Even an average sized house block (or even better, several local house blocks) is capable of supporting a wide array of plants and animal species. You can increase the biodiversity of your local area by providing native plants and attractive structures in your own garden.

Mimic a natural ecosystem, planting native flowering trees and shrubs, use a few hollow logs and bird boxes and include a fresh source of water in a shaded area away from pets and children.

Visit your local nursery and ask for plants local to your area, and varieties that will attract various types of wildlife to your garden. Native plants are also more drought tolerant.

Local Landcare groups and other environmental groups could also offer suggestions. Look on the Macedon Ranges Shire Council website for contact details.

By helping your environment you're helping local

wildlife. Your garden could become a living habitat or part of a habitat corridor.

If you are looking at updating or mending fences look at our website www.mrwn.org.au for some wildlife friendly fencing ideas for home gardens or property.

If you see any injured or sick wildlife, please call the Wildlife Victoria 24 hour emergency number **1300 094 535**.

Did you know that dead wildlife long roads etc that have been marked with a cross painted on the body have been checked by local wildlife rescuers, to ensure that they are dead (and euthanized if necessary) and checked for live pouch young?

If you see any un-marked dead or injured wildlife, please contact the 24 hour emergency number, so it can be checked.

If you notice any wildlife that is not behaving normally or you can approach, please call the 24-hour emergency number. 1300 094 535



Lachlan Fleming
CARPENTRY
REGISTERED BUILDING PRACTITIONER
0401 499 898
EXTENSIONS RENOVATIONS
ALTERATIONS

Your Memories to DVD

* 8 mm/16 mm Films	* Mini DV
* Compact VHS	* VHS

Discount for Quantity
 **Top Hat Productions**
Ph: 5422 3930

WOODEND
Proud to be Pokie-free



CONTINUING VETERINARY EXCELLENCE

Our commitment to you is to provide the highest quality veterinary services in medicine, surgery, health and wellbeing and preventative healthcare in a friendly, personalised & caring environment.

We care for all companion animals, equine, alpacas & livestock.

ANIMAL MANIPULATION
24 Hour Emergency Care
5427 4344
12 Anslow Street Woodend

New Legal Practice in Woodend

Peter Baker & Associates, which has been operating in Bendigo since 2004, have opened a branch office in Woodend. The firm practises primarily in the areas of Family and Criminal Law, Victims of Crime Applications and Children's Court cases. The firm is committed to providing high quality accessible legal services from its new branch office in Urquhart Street, Woodend.

"We aim to provide our clients with professional but friendly personal service," says Peter Baker. "We understand that many people feel intimidated by lawyers and the legal system and we will take the time to explain clearly to clients their legal rights and obligations. Best practice involves communicating clearly with clients throughout the course of a case."

Peter is a great believer that lawyers have a role to play in facilitating access to justice to all members of the community. In order to do this the firm offers a no obligation free first interview, provides legal aid, can assist in referral to appropriate agencies and flexibility in payment arrangements.

Peter notes, "The no obligation free first appointment means people can get some brief legal advice without worrying what legal costs they are getting themselves into. If they then require ongoing legal representation or action then we do charge for that first interview but if they require no further assistance after that first interview there is no charge or obligation."

Clients receiving legal aid funding are assured of the same level of professional service as clients who

Peter Baker & Associates Barristers & Solicitors

**Family Law
Criminal Law
Crimes Compensation**

**NOW TAKING APPOINTMENTS
IN WOODEND**

Peter Baker
BSC & LLB (Monash)

Juliana Smith
BN GDLP & LLB (UNE)

Ph: 5441 7300

Fax: 5442 4232

27 Urquhart St. Woodend
Level 1, 21 View Pt. Bendigo
info@peterbakerlaw.com.au

FIRST INTERVIEW FREE

Trampolines

ORDER NOW FOR CHRISTMAS!

12FT = \$395
Well Below Retail
SAVE \$\$\$
14FT = \$445
Prices subject to change without notice

New tougher padding
New 2010 MODEL!

Includes **SAFETY NET - PADS - LADDER**
Free Pickup from Woodend
\$20 Delivery
Macedon Ranges
On site installation available

For Inspection and Enquiries: Jason Johnson Ph:0400528129
just trampolines@hotmail.com

pay privately. Further, if an alternative service can more effectively assist a client the firm is happy to provide that referral.

Peter Baker was admitted to practice in Victoria as a Barrister and Solicitor in 1988. He has worked in private practice in Braodmeadows, at a metropolitan community legal centre and then with Victoria Legal Aid before relocating to Bendigo in 2002 to work in private practice and then establish his own practice in 2004.

Peter's associate is Woodend resident, Juliana Smith. Before starting her career as a Barrister and Solicitor, Juliana worked in diverse roles including clinical nursing and business management. Originally from Western Victoria, she has lived in Woodend with husband Howard since 1995. They have two children.




Peter Barker with Juliana Smith

Calling all community groups

The New Woodend Star needs your contributions. If you are from a community group, club, sporting team or know of an interesting story or person, please submit your article, and any photos to the team at the New Woodend Star via email by the 15th of every month. Alternatively, articles can be deposited in the drop boxes, located at The Bank at 75 High St, Ian Marks Liquor, Collier Office and Business Assist, or the Newsagents. Please keep articles under 350 words.

**All local groups, clubs and committees
are invited to submit articles for
publication**

Eating Out, In & Around Woodend



NOAH'S
INN TYLDEN

Noah's Inn Tylden
43 Trentham Road
Tylden 3444
Ph: 03 5424 8119

OPEN 7 DAYS **DINNER FRIDAY AND SATURDAY NIGHTS**



Frank & Rose Gorlitz
Open 7 Days
8am till late
breakfast, lunch & dinner

For Bookings
Ph/Fax 5427 4447
Mobile 0488 423 537
"Where Lovers of Food Eat"



**UNDER NEW
MANAGEMENT**
Open 7 days per week
10-4pm Mon -Friday
9-5pm Sat. & Sun.
- 5427 3466 -
- 0401 548 617 -

Top of the Range
Mt Macedon
Tea Rooms & Gallery

Top of the Range Tearooms and
Gallery is under new
Management, with fresh new
decore and a light lunch menu

Gallery Now Open
Top of the Range
Mt Macedon
Tea Rooms & Gallery

MACEDON RANGES WINE AND FOOD FESTIVAL PRESENTS

BUDBURST 2009
SATURDAY 14TH & SUNDAY 15TH
NOVEMBER
**MOUNT MACEDON
WINERY**



Music: 3 PIECE LOCAL BAND: MOODSWING

Wine: LOCALLY GROWN AND MADE
CHARDONNAY, PINOT, ROSE, BLUSH
OUR ESTATE GROWN SPARKLING CHAMPAGNE

Food: FRESHLY MADE PIZZAS, PLOWMANS
PLATTERS, CHEESE PLATE
WITH CRACKERS & GREENS

Venue: FANTASTIC WINE TERRACE DECKING
OVERLOOKING GARDENS AND LAWNS.

*Enjoy the day, bring friends and relax,
try our wines.*

open Saturday & Sunday 11am-5pm
433 Bawden (Douglas) Road, Woodend / Mt Macedon
www.mountmacedonwinery.com.au
5427 2735

RedBeard Historic Bakery

Open Tuesday to Sunday 8am to 4pm
Old Bakery Lane, Trentham

- excellent fairtrade coffee • delicious organic food •
- shady courtyard for warmer days • family friendly •
- traditional baking in 120 year old Scotch oven •
- Winner 2008 Hepburn Tourism Award – Food and Hospitality •

T. 03 5424 1002
Follow us on Twitter @RedBeardBakery or visit
www.redbeardbakery.com.au

Where else can you get our organic woodfired bread?

Retailers:
Nature's Garden, Woodend Woodend Bakery Cafe
Slow Living, Kyneton Mt Macedon Trading Post
Viv's Organics (home delivery)

Monthly Farmers' Markets:
Daylesford (1st Saturday) Castlemaine (1st Sunday)
Kyneton (2nd Saturday) Trentham (3rd Saturday)
Riddells Creek (3rd Saturday) Lancefield (4th Saturday)

Eating Out, In & Around Woodend



the bentinck
Conferences • Events • Weddings

Its time to start thinking about your Christmas party!
Call now to secure your date!

T: 03 5427 2944 **E:** sales@bentinck.com.au
F: 03 5427 2232 **W:** www.bentinck.com.au

The Bentinck for Christmas

Its time to start thinking about rewarding your staff for their support and their hard work throughout the year.

Let the team at The Bentinck take care of the details so that you can relax and enjoy your Christmas function alongside your workmates.

The glorious ambiance and old world charm of the private function rooms at The Bentinck, combined with great value Christmas packages are sure to satisfy the most discerning taste and budget requirements. Call The Bentinck now on 5427 2944 to ask about our function packages starting from \$30.00 per person.

Not Just Fudge

126 High Street, Woodend

Home-made Fudge,
Natural Ice Cream, Coffee, Tea, Herbal Tea, Milk &
Thick Shakes, Cakes, Sandwiches,
Freshly Squeezed Fruit & Vegetable Juices

Ph: 5427 2210
Fax: 5427 2880

Campaspe Country House

"Best of the Region" Dinner

Friday 6th November @ 7pm

Our Head Chef has designed a 6 course degustation dinner, to match the trophy winning wines from the Macedon Ranges Wine Exhibition @ \$130 pp

Christmas Day

Lunch @ 12pm / Dinner @ 7pm

Celebrate the festive season with family and friends, whilst enjoying a superb 4 course meal @ \$125 pp

Contact our Reservations team for more information or to make a booking

Goldies Lane Woodend Victoria
Telephone: 5427 2273

Email: reservations@campaspehouse.com.au | Web: www.campaspehouse.com.au



victoria
HOTEL
WOODEND

Bistro

Open 7 days lunch & Dinner

Daily Blackboard Specials

Open Fires

Bar

Counter meals daily

Fridays Tradesmans Lunch-\$14 pot & parma

TAB & Sky Channel

Specials

***Tuesday Locals Day** menu \$17.50

with glass house wine, lunch & dinner.

***Pensioner & Seniors** card holder Lunch menu

from \$12.50 Monday to Thursday (Lunch only)

Drive Through Bottle Shop

Open 7 days

Music Sundays

From 2.30pm, ring for information

Bookings 5427 2721

67 High Street, Woodend

www.vicwoodend.com.au

info@vicwoodend.com.au

Eating Out, In & Around Woodend

* FAB FOOD
 * FUNCTIONS & CATERING
 BY ARRANGEMENT
 Bookings Essential
 BYO wine only
 Light Snacks Mondays
 Free entry for
 Macedon Ranges residents

Tel: 5427 0295

Large range of Australian Gifts

**Hanging
 Rock
 Café &
 Country
 House**

VIEWS
 STEAK & SEAFOOD
 RESTAURANT

New management...
 New menu...
 New chef...
 New name...
 New concept...

Present this ad
 to receive one
FREE coffee!

Same perfect view!

652 Black Forest Drive, Macedon Ph 5426 4033

Templetons
 Restaurant

CHRISTMAS FUNCTIONS

Templeton is the perfect venue
 to hold your Christmas Function
 with the option of three
 different set menus available
 Don't miss out on your desired date
BOOK NOW

Fully Licensed
 Open for Dinner Tuesday-Saturday 6pm
 17 Templeton St
 (Opposite the Catholic Church)
 For Bookings Telephone 5427 4852

Cellar to Glass @ 101

101 Mollison St. Kyneton P: 5422 1355

Breakfast & Lunch: 7 days a week
Dinner: Tuesday and Thursday from 6p.m.

Tues: Locals Night- 2 Courses @ \$25 p.p.
 (includes glass of wine/beer)

Thurs: a la carte- seafood focus

Hosts: Andrea Donaldson & George Murphy

**HOLGATE'S BAR
 & RESTAURANT**

Microbrewery Hotel with cosy
 open fires, stained glass windows
 and friendly atmosphere. Award
 winning local beer. Delicious
 meals including house-made bread, pasta and desserts.
 Function room and stylish accommodation now available.

Open for Lunch Tues-Sun. Open for Dinner 7 Days

79 High Street, Woodend
Ph 03 5427 2510

Colenso

Cafe Colenso
 Fabulous coffee
 Breakfast-brunch-lunch
 Freshly baked cakes and bread
 Fully Licensed & BYO

Now open Wednesday to Sunday 8.30 – 4.30
In the garden behind Macedon Ranges Florist

42 Anslow St, Woodend Phone 5427 2007

This page is proudly sponsored by the 19th HOLE SHOPPING CENTRE

cut out this calendar & stick on your fridge!



Upcoming Events & Meetings

October

- 27 Woodend Childrens Park Ribbon Cutting Ceremony
- 31 Woodend Childrens Park Community Celebration

November

- 3 Melbourne Cup
- 4 Kyneton Cup
- 5 Red Cross Luncheon 12 noon
- 6 Senior Citizen General Meeting
- 30-31 Macedon Ranges Art Group Exhibition
- 7 Kyneton Croquet Annivesary
- 7 St Mary's 150th Celebration Fete
- 10 Mount Macedon Walk 9.30am
- 11 Remembrance Day
- 14 Annual Market Newham Primary
- 14/15 Budburst 2009
- 21/22 Pinot & Peonies at Braewattie Vineyards
- 22 CFA Community Meeting – Woodend CFA 12 noon
- 25 International Day for the Elimination of Violence Against Women (White Ribbon Day)
- 26 Attachment the Brain, Human Happiness Seminar – BaBs 5427 0156
- 27-30 Parenting Heart to Heart Training - BaBs 5427 0156
- 30 CFA Community Meeting – Woodend CFA 7pm
- 29 Athol Guy & friends at Noah's Inn, Tylden
- 29 Hanging Rock Petanque Club Triples
- 30 CFA Community Meeting – Woodend CFA 7pm

December

- 2 RSL General Meeting 7.30pm
- 4 Newham Hall Grand Opening 11.30am
- 5 WOOMBA festival
- 5 Landcare BBQ
- 6 Gisborne Singer preform *Messiah*
- 13 Lion's Club Carols by Candlelight

February

- 27/28 Relay For Life Lancefield Macedon Ranges

COMMUNITY GROUPS CONTACT DETAILS

Alcoholics Annonymous Friday night, Cobaw Community Centre 0409 131 144
 Australian Breastfeeding Association, Heather 5427 2398
 Cobaw Thursday Walking Group 5427 3340
 Daylight Masonic Lodge, 5427 2480
 1st Woodend Scout Group, 5427 3788 Sarah
 Friends of Macedon Ranges Library, Chris/Bill 5427 2469
 Garden Club 5422 6062 / 5427 3340
 Living Word Christian Church 5429 6327
 Historical Society, Courthouse, 5427 2523
 Macedon Ranges & District Motor Club, 10 Webb Cres, New Gisborne 1st Wednesday each month 8pm
 Macedon Ranges Animal Aid, Buffalo Sports Stadium, 5427 1752
 Macedon Ranges Bridge Club, 5427 4440
 Macedon Ranges Families of Children with Disabilities Support Group, 5427 3365
 Macedon Ranges Residents Assc. 5427 1481 or 5427 2651
 Macedon Ranges Communicators (ITC), 5427 2669
 Macedon Ranges Photographic Society, 1st Tues of month, Ron Mathews 5427 3284
 Macedon Ranges Social Club (activities for singles over 35) phone 9740 5517 or 9744 2697
 Probus, 5427 2003
 R.S.L., Anslow Street 5427 3122
 Red Cross, 5427 1260
 Rotary Club of Woodend, meetings weekly at Vic Hotel Thursdays 6.45pm, Kai 5427 1029
 St. Mary's Guild, 11am, 4th Wednesday of month
 St. Mary's Street Stall, 9-12 noon outside Woodend Newsagency (2nd Sat of the month)
 Woodend Landcare Group, Jo 5427 1909 or Doug 5427 0666, 3rd Tues Meeting, 4th Sunday Working Bee
 Woodend Angling Club, RSL Hall, 5427 2395
 Woodend Art Group, Railway Station, 5422 6172 or 5427 1659
 Woodend Business & Tourism Association, Cori 5427 3434, 2nd Tues of month (BATA)
 Woodend Lions Club, Meetings 2nd/4th Wednesday each month, ph Robyn Roberts 5427 1342
 Woodend Model Railway Club, Buffalo Stadium
 Woodend Pony Club, 5427 2793
 Woodend Senior Citizens Club, Comm. Centre
 Woodend SES Training Nights, Urquhart St
 Woodend Winter Arts Festival Inc., Jacky 5427 1560

CLUBS: PLEASE KEEP THESE DETAILS UP TO DATE

Ian Marks Liquor
5427 3961

Blue Orange Concepts: homeware
5427 4500

Woodend Pizza & Pasta
5427 3777

Coles Supermarket
5427 2377

Collier Office & Business Assist and Woodend Copy Centre
5427 3092

Pets Haven
5427 3603

Mitre-10 Woodend Hardware
5427 2314

BP Woodend
5427 2248

Target Country
5427 4366

Macedon Ranges Travel Services
5427 4777

Kosmac & Clemens: optometrists
5427 4577

Woodend Cycles
5427 2662

Salvation Army Family Store
5427 4421

Loose Change Bargains
5427 4466

Bodywise Underwear
1300 66 17 66

Australia Post
5427 2600

Inner Artist
5427 4455

The Spa Beauty Therapy Centre
5427 3322

HIGH STREET SHOPS

Color Me Cooper: clothing/gifts
5427 1454

Chelleon For Hair
5427 3246

Not Just Fudge
5427 2210

RT Edgar Real Estate
5427 1222

Woodend Bakery Cafe
5427 3434

PLEASE SEND US YOUR FUTURE DATES

Bradley's

Curtains + Blinds

New showroom now open
Mon to Fri 9 - 5.30 + Sat 10 - 1



t 5427 2361 fx 5427 1019 72 High Street, Woodend VIC 3442

www.bradleyscurtains.com

**Total
Financial
Solutions
Australia**



*Helping you save
for a
"Rainy Day"*

Bob Nixon

B.Com., Dip.Ed., Dip.A.I.I., Cert. IV Fin. Plng., F.A.F.A.

Authorised Representative,
Total Financial Solutions Australia Pty Ltd
ABN 58 003 636 968 AFSL No.246545.

Shop 10, 34a Hamilton Street. Gisborne Vic 3437

Ph: 03 5428 0123

Fax: 03 5420 7710

E: bobnixon@netcon.net.au

W: www.bobnixon.com.au

OFFICE SPACE AVAILABLE

with Speech Pathologist Rhonda Hill and
Occupational Therapist Fiona Le Nepveu

at 81G High Street, Woodend

Please call Rhonda Hill for further
information on 5427 3309

"Magnificent" Art MAD Gallery & Café

19 High Street, Lancefield

Tel: 5429 1432

Web: www.madgallery.com.au

Open everyday 10am – 5pm

We're proud of our coffee and promise you
the best coffee around, or your money back!

Woodend Senior Citizens

Senior Citizen's held their AGM on 2nd October, it was well attended with all the positions being filled as follows; President – Alma Warnock, Vice President – Norma Richardson, Secretary – Pat Mansfield and Treasurer – Bob Adams.

Cards are played each Friday at 1.30pm, all Welcome. Carpet Bowls Friday morning at 10.30, lots of fun. Tuesday Bingo at 1.30pm.

Next General Meeting will be held on Friday 6th November, members please bring along ideas for the next bus trip.

Submitted by Norma Richardson

Ace venue for hire

Looking for somewhere to hold a party or run meetings? The tennis clubhouse is available for hire at the very reasonable rate of \$25 per hour, or \$15 for regular bookings.

Kitchen facilities, heating and air-conditioning, and tables and chairs make the hall suitable for groups of up to 80. The club also has a new barbecue and shade tent available to users.

So if you want to take some of the hassle out of hosting anything from a children's birthday party to a family reunion, or if you need an affordable no fuss place for your hobby group to gather, or an informal space for a business meeting or training seminar, come and check out the Woodend Tennis Club.

For more details contact Nadine on 5427 1571 or email: nhartnet@bigpond.net.au

**All local groups, clubs and committees
are invited to submit articles for
publication**

Harriette's Journey Continues

So it's 1500 and something, and you're getting about the abbey at St Hilaire in Limoux doing the Benedict monk thing. Youk now. Few prayers, choir practice after lunch and a bit of brewing before teeth and bed.

St Benedict (B1) never meant to found a religious order though. He just wanted a bit of peace, and so retired to his cave in the year 500 and something to think about things – mainly the immorality of Roman society.

When it appeared his time was near, he detailed his cave conclusions on the shortcomings of the youth of 500 and something, recommending everybody pray and sleep, among other things. Predictably, when B1 died, a host of followers took him at his word.

Fast forward to St Hilaire a thousand years later, where the production of wine was in full swing, and perhaps one young monk was tired of praying, sleeping and wine making. Something had to give.

From his cold beds, he might have sat bolt upright, shrieking in French toward the darkness of the Cork Mountains "blah blah blah de blah (trans. "By Joves I've Got It") and the next day set out to improve the world by inventing – stand back – Secondary Fermentation in the Flask.

The monk, Dom Perignon had just discovered sparkling wine. He promptly handed in his resignation at Limoux and transferred north to the region of Champagne. Why? It MUST have been a marketing strategy.

Limoux. Le Moo? Sounds like a milk shake. Champagne? Sounds like fun. It seems they'd come the full circle in a thousand short years. The monks went into full swing, and Rome could return to being immoral - only now they wouldn't remember it.

Harriette, whilst supposedly on a recce to France to get the jump on the Petanque season, didn't actually manage to do her homework, but did enjoy the abbey at St Hilaire.

submitted by Chinka Steel

rebecca carey
freelance graphic designer



0409 868 384
affordable options for all of your print design needs

SOLAR DIRECT

- Solar Hot Water
- Grid Interactive Solar Systems
- Stand Alone Power Systems

Ph: 1300 55 77 98
Mobile: 0411 269 489
Lancefield



Grantra
HOME IMPROVEMENTS
Specialising in Bathroom Renovations

PO Box 736, Woodend 3442
0418 175 877
www.grantrahomeimprovements.com.au

Master Builder
REGISTERED Building Practitioner

The Empathy Foundation

The Empathy Foundation has its origins here in the Macedon Ranges with the mission of spreading the word about the importance of empathy and how to grow it. The Empathy Foundation is thrilled to again be hosting a return visit from Robin Grille, who is a highly acclaimed author and speaker on the effects of how we parent on the brain and behaviour.

Robin Grille will conduct a seminar called "Attachment, the Brain, Human Happiness" on November 26 the in Gisborne.

There will also be a four day "Parenting Heart to Heart" training course run by Robin Grille in Macedon from November 27th to 30th.

For more information, please contact Alice Aird of the Empathy Foundation on 5427 0156 or 0400 068 551 or Macedon Ranges BaBs (Birthing and Babies) macrangesbabs@yahoo.com.au

Regular business card advertisements (90mm x 55mm) are \$41 inc GST per month - book & pay 11 months and get 10% off.



ARCHITECT
COMMERCIAL
DOMESTIC
ALTERATIONS

ARKITURA 0429 844 800
pty ltd

IAN SCOTT B.ARCH(HONS) EDIN. ARBV
PO BOX 806 / 49 WATERWORKS RD / WOODEND VIC 3442

Discover your
inner artist

ART & CRAFT MATERIALS

Join our Craft Workshops

- Beading • Card Making • Scrapbooking •

43 Anslow St. Woodend **5427 4455**



Hesket
Estate
Macedon
Ranges

Visit us during Budburst
14th & 15th November 10-6pm

*Sample our award winning
wines, whilst enjoying our
Delightful food.*

- Sparkling Macedon
- Chardonnay
- Gewürztraminer
- Rosé
- Pinot Noir

*With roots deep in the rich soil of the
Macedon Ranges, Hesket Estate is a project
of love and passion, with all grapes picked by hand.*

856 Romsey Rd Hesket
5427 0707

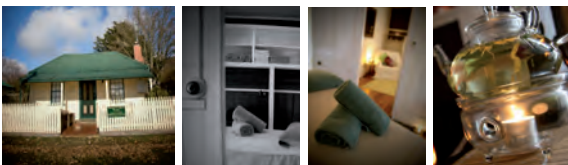
Massage Therapy

with Natalie Taranto

Reconnect and Restore the Flow Within

A Massage makes a fabulous Christmas gift

Receive \$20 OFF
your Christmas
Gift Voucher
when you book a 60 min massage



Now at McCubbin Cottage, 58 Urquhart St Woodend
Call for an appointment 0402 534 983

- Remedial Massage Therapist •
- Deep tissue • Relaxation • Pregnancy • Reiki •
- Ear Candling •

Hoax Water Survey Calls

Western Water warns of hoax telephone calls from people purporting to survey people about their water supplies after reports from Macedon Ranges residents.

This follows a similar warning after a spate of door-to-door salespeople were reported trying to lure people with free offers or trying to scare people with false claims about the quality of drinking water supplies in Melton and Sunbury in August.

When one Western Water customer asked for return contact details, they were given an interstate telephone number that was then not answered.

This was obviously not the contact of a reputable company and the customer had the good sense to check through the water company. This practice is appalling and aimed at promoting fear.

The Australian water industry is a world-leader in delivering top-class town water supplies and Western Water drinking supplies meet all Australian drinking water standards.

Customers are urged to report unusual contacts from people claiming to represent the water industry by contacting a Western Water customer service operator directly on 1300 650 422.



kitchen cook table home

beautiful christmas gifts
arriving daily

Blue Orange Concepts
mort tobias

Shop 2
Telephone

130 High Street, Woodend 3442
03 5427 4500 open 7 days



- Grid connected domestic solar systems
- Stand-alone solar and wind generator power systems
- Farm and residential solar gate openers
- Solar bore, dam and tank pumps
- Garden and landscape lighting
- Telephone / data cabling

Contact: Ray Telephone: 5426 2574 Mobile: 0416 085 276

TITAB T08698 - BCSE P2026



WOODEND & DISTRICT PODIATRY

John F. Shapland
Resident Practitioner

Reg. Department Veteran's Affairs

5427 2064
Business and After Hours

1895 Mt. Macedon Rd., Woodend

**Sand | Soil | Mulch | Pots | Pavers | Plants
Water features | Fire wood | Wine barrels
Hire Equipment | Synthetic turf | Sleepers**



42 Nursery Road Macedon 3440 Victoria
Email hello@nrgsupplies.com.au
Telephone 03 5426 2400 | Facsimile 03 5426 4972
General open hours Monday–Friday 7:30–5pm,
Saturday–Sunday 9–5pm. Arrangements outside
these hours can be made.

Hesket primary school Thank you

Hesket Primary School, parents, and staff and the fundraisers committee wish to extend their thanks and gratitude to all our sponsors and those who attended the 22nd Annual Supper Dance held at Kyneton Town hall on the 22nd August. It was another successful night of fun and fundraising.

Kirsty Nuttall

MACEDON RANGES PICTURE FRAMING SERVICE

By appointment only
Phone/Fax: 5427 3511
Mobile: 0417 337 857

Contemporary Blinds

Quality Blinds at factory Direct Prices

- Latest Styles/Fabrics/Colours
- Sunscreen/Blockout Blinds
- Roller/Roman Blinds/Venetians
- Automated Blinds
- Professional Installation Team
- Exterior Awnings

Ring Now for a Free In House Consultation/Quotation

Mark 0437 759013 Woodend Simon 0458 338995 Keilor East

Where Style is Affordable

HORSE RUG REPAIRS

Quick & Quality Service

Ph. Alysha on 0407 097 665 Lancefield

Movies That Matter

Macedon Ranges Sustainability Group presents: Movies that matter, returning for 2009 with a new format.

Held at the Victoria Hotel function room with meals and drinks available from 6.30pm, then settle in for the movie, showing from 7.30pm.

Movies that matter will be held every second Tuesday of the month.

November's session is Sustainable Cities showing of A Convenient Truth: Urban Solutions from Curitiba, Brazil it's an informative and inspirational documentary aimed at sharing ideas to provoke environment-friendly and cost-effective changes in cities worldwide. The documentary focuses on innovations in transportation, recycling, social benefits including affordable housing, seasonal parks, and the processes that transformed Curitiba into one of the most livable cities in the world. "Cities should be a solution not a problem for human beings. The city of Curitiba has demonstrated for the past 40 years how to transform problems into cost-effective solutions that can be applied in most cities around the world." MRSG Members – \$5 Non-members welcome to join on the night and attend (\$15 single / \$25 fam.

All news items, articles and community news columns must be received by 15th of each month.



Living Word Christian Church

Meet
EVERY SUNDAY

10am

7 Mitchell Court Romsey

&

6PM

Woodend Community Centre

FOR MORE INFORMATION

5429 6327

livingword@iprimus.com.au



Thank you

Thank-you to our wonderful friends and neighbours for your good wishes, gifts, meals and prayers following the birth of Elijah on August 17.

We would also like to acknowledge the support extended during and following our recent hospital stays.

Special mention to the St Ambrose school community for its generosity and compassion, and to Dr Richard Bills, the Brooke Street Medical Centre nursing team, and the brilliant local ambulance officers for their professional care.

Our beautiful boy is now healthy, happy and strong.

Nadine Hartnett, Rob Knight & big brother Ned

Regular business card advertisements (90mm x 55mm) are \$41 inc GST per month - book & pay 11 months and get 10% off.

WOODEND TAXIS

 **5427 2641**

- Taxi Passengers
- Verbal Message Delivery
- Airport & Melbourne Service
- Also Pickup & Delivery of Letters & Very Small Parcels

Betty Valli

29 Urquhart Street, Woodend

WOODEND SELF STORAGE



- Store your business documents, stocks or furniture
- 7 day access
- 33 individual sheds
- Affordable prices
- Insurance available

For any enquiries
please contact
Leonie or Dennis Barker
on **5427 4175**

Woodend Neighbourhood Centre

Our final term for 2009 is now well under way, with people trying new activities, keeping fit or learning a skill for employment, not forgetting our children's drama classes.

We really do have something for everyone.

There is still time to become involved this term with:

- What do you know about blogging? Want to know more? Ask us!
- Level 2 or paediatric first aid and anaphylaxis (management of allergic reactions)
- French Conversation, beginners or advanced
- Summer is coming so understand your digital camera and take great pictures under the guidance of Hubert
- Our Quilting and stitchery group welcome new people with or without experience at any time during the year.
- Publisher is a Microsoft package used by many for producing professional documents – why it give it a try?
- Fitness is always on many peoples minds so whether it is Tai Chi and gentle exercise for seniors, walking or cycling there are many ways you can get active and feel good about yourself.
- Are you planning to operate a boat or Jet Ski this summer? Receive training on how to play it safe, take a test and then have the certificate ready to get an endorsement on your licence.

If a course is advertised but you missed the start date or are unable to attend on the advertised day please let us know. Sometimes classes are postponed if we don't have sufficient enrolments, so you could be the extra student we need to get the class running.

We are now planning for 2010 so if you would like to become a tutor, or are hoping to try something we don't currently have on offer please let us know. We offer hobby, social, fitness and educational courses throughout the year and always welcome new ideas and opportunities for members of our community.

We are open 5 days a week during school hours. We have Internet access, fax, printing and photocopying services available so pop in and see us soon.

Sarah Campbell WNC 47 Forest St, Woodend

5427 1845 www.wnci.websytle.com.au

All news items, articles and community news columns must be received by 15th of each month.

Chiropractor – Mark Brown

- **20 years in Practice.**
- **Upstairs at Westpac Bank, 75 High Street**
- **Muscle realign and stretch techniques**
- **Gentle spinal adjustments**
- **Shoulder, elbow, wrist, knee, foot problems**
- **Headaches, migraines, athsma, neuralgia, digestive problems**



Phone 5427 1456 or 0407 526 403

There's no substitute for local knowledge. And we've been locals since, well, forever.

We first opened our doors in Woodend in 1927. Over the years we've come to understand the needs of locals, and have the experience and knowledge to help you with all your financial needs.

- Home loans and investment home loans
- Personal loans
- Credit cards
- Business loans and equipment finance
- Transaction and savings accounts
- Home insurance (including building, contents and personal valuables cover)
- Car insurance
- Superannuation, managed funds and wealth creation
- Life insurance and income protection

Simply call **03 5427 1777**. Or drop in and see us at 82 High Street. We're right here where we've always been.

commbank.com.au

Commonwealth Bank of Australia ABN 48 123 123 124 CBALA0000 00/00

Determined to be different

Lancefield & District Farmers' Market

This Saturday 24th of October 9am to 1pm

Fresh produce, Quality provisions, Other off farm produce. Phone 5429 1214 or 0432120766

Dr. Joanne Messenger B.App.Sc.(chiro)

Chiropractor

Do you need more energy? Less pain?
Chiropractic is a natural approach to health based on the nerve system and optimum function of your body's tissues, muscles, organs and systems. Nerves carry messages from your brain thru the spine, and control every function of your body. How's yours working?



Call 5422 6488 for appointments
150 Mollison St. Kyneton

KYNETON EQUIPMENT & PARTY HIRE

FOR ALL YOUR HIRING NEEDS
8-12 BEAUCHAMP ST PHONE (03) 5422 2311
KYNETON VIC 3444 FAX (03) 5422 2930

Email: kynhire@bigpond.net.au
website: www.kynetonhire.com.au

Lancefield-Macedon Ranges Relay For Life –

FEBRUARY 27-28, 2010 Lancefield cancer relay gathers speed

Friends, families and workmates are gearing up for the 8th Lancefield-Macedon Ranges Relay For Life on the weekend of February 27-28, 2010. They are joining participants across the world in the event that brings teams together to raise funds for cancer research, education, advocacy and support services.

It is an occasion to remember those who lost their battles with cancer and others trying to beat the disease. Just as importantly, it is a weekend to celebrate the survivors and acknowledge their carers as well as others supporting people undergoing cancer treatment.

And it is not too late to register for the regional Relay, which will again be held at Lancefield Park.

Around 40 teams are expected at Lancefield and will add to the regional event's fundraising effort of more than \$700,000 since the Relay started locally in 2003.

It costs \$15 per person to register (including 2010 official Relay shirt) and people of all ages and abilities are welcome. The Relay is not a race but teams are challenged to keep their relay batons moving around the oval from Saturday afternoon until Sunday morning.

Those who have attended past Relays recall having a memorable, moving and rewarding experience. Highlights of the weekend include a Survivors & Carers lap, candle ceremony and the release of white balloons to commemorate loved ones who have died from cancer and others trying to beat the disease.

Many participants camp overnight and live entertainment, catering and other free services including massage are provided.

Teams and individuals can register for the Relay and find out more details online at www.relayforlife.org.au by following the prompts to Lancefield. Alternatively, contact Melissa McCarthy on 0438 831 427 or tmac31@bigpond.net.au. Registrations are preferable as soon as possible but will be accepted at Lancefield Park prior to the event's start.

If you would like to support Relay For Life but are unable to participate at Lancefield Park look out for fundraisers being held by local teams.

All news items, articles and community news columns must be received by 15th of each month.



We deliver to your home the

freshest, best quality, certified organic fruit & vegetables available & guarantee this 100%

Pick from a range of pre-selected boxes or select your own order from our weekly availability list

Phone: **0409 386 875**
or **5429 1156**

email: vivien@netcon.net.au

www.vivsorganics.com.au



LEADING HAND CARPENTRY

COMPLETE BUILDING SOLUTIONS

Call 0439 360 896 or email
shannon@lhcarpentry.com.au



REGISTERED
Building Practitioner



Mission Cambodia

Ever wanted to be involved in a Cambodian adventure?

Well now you can with the Cambodian Kids Foundation's cultural exchange program. The program is called Mission: Cambodia and allows you to experience an opportunity of a lifetime and truly make a difference in Cambodia.

The Macedon Ranges has done so much to support our foundation and now we wish to introduce you all to our projects, staff and students, and what better way to do this then to have you come along on one of our trips.

During this amazing Mission: Cambodia adventure you will live amongst the Khmer people, learn to cook traditional Khmer meals, teach English and computer classes to our students, learn about the history of Cambodia, develop lifetime friendships, visit the breathtaking temples of Angkor Watt (one of the seven wonders of the world), teach our kinder kids some basics, visit our Saing Sy centre and Mous village and so much more!



The Mission: Cambodia project will take place in Phnom Penh, the capital city of Cambodia. You will stay at our fully supervised ACE leadership centre in student dorm rooms, which is looked after overnight by our friendly security guards. The dorm rooms are comfortable, clean and safe.

Volunteers may also choose to stay at the dorm rooms in our Cambodian Kids Care Kindergarten. Here, you will assist picking the young children up from home, cooking for them, playing, teaching them at the kindergarten before walking them to tiny tot's school later in the afternoon.

We would love to take people from Woodend to show you how much your generosity has helped us to achieve.

Kerri Hendriks House cleaning

Looking for permanent work
Weekdays from 9am - 5pm
\$20 per hour

Minimum 3 hours cleaning
Please note no equipment or
cleaning products supplied
Call Kerri 0403 685 060

Thanks once again, The Cambodian Kids Foundation

Meta Massage

SPORTS/REMEDIAL MASSAGE, SHIATSU, REIKI
Raymond White

Telephone 0411 268 336

for an appointment

18 years experience • Chronic and acute conditions
Sports injuries • Rehab work

\$45 special for tradies, runners & bike riders



BUDA

Historic HOME & GARDEN

Home of the noted Gold and Silversmith Ernest Leviny and his family from 1863 to 1981 featuring: authentic furnishings and arts & crafts collection, significant heritage garden and grounds

Open Wed-Sat 12 noon to 5pm & Sunday 10am - 5pm
(by appointment for groups)

42 Hunter Street, Castlemaine 3450 Ph 5472 1032
admin@budacastlemaine.org

Mount Macedon Walk

Celebrating walking in Macedon Ranges Shire on Tuesday 10th November, starting at 9:30am from Days Picnic Ground, Mount Macedon – there will be two walks to choose from.

Please bring Water bottle, hat & sunscreen & camera
Tea, coffee, water & fruit will be provided
For more information please contact: Julie Gujer 5428 0300, Petrina Nettlefold 5472 5333,
or Alicia O'Brien 5421 1666

EpiGenetics

1300 737 146

Ultra-longevity & Success

- Quit Cigarettes (In 60 Min) & Addictions
- Lose Weight for Life – Manage Pain & Trauma
- Address Anxiety – Phobias – Behaviour Problems
- Achieve Wellness – Energy & Focus

CHILDREN ESPECIALLY WELCOME

Introduction Massage \$45

Parent buddy program returns to the Macedon Ranges

Call for volunteers and interested families

Cobaw Community Health Services is pleased to announce the receipt of a grant from the Department of Families, Housing, Community Services and Indigenous Affairs to continue its highly successful Parent Buddies Volunteer Home Visiting Program. The grant has enabled this valuable project run until the end of next year (Dec 2010).

The Parent Buddy Program coordinates volunteers offering practical support to families with children and assistance to connect with their local community. Our volunteers are screened and trained to assist families to feel more confident in parenting by exploring ideas, offering advice on local resources, getting more organised or simply sharing a good chat over a cup of tea. To date the program has assisted families with a broad range of issues from dealing with the daily challenges of caring for young children to managing the move to a new house or suburb.

“The Parent Buddies Program offers a unique opportunity for families to get extra support in their own homes and successfully move through some of the challenging times involved in parenting young children,” explains Sue Wilson, Parent Buddies Project Worker. “The project has been successful in intervening before situations get on top of parents.”

With the re-launch of this innovative program, Cobaw now needs additional volunteers to continue and expand the program. Current volunteers say they enjoy their participation in the program and often gain as much from their visiting as the families involved. Parents of young children and older members of the community have much to offer in this role and are encouraged to apply. Cobaw is interested in hearing from anyone wanting to help with this important community service, as well as from any families who would like to take part in the program.

For more information about the Parent Buddies Program, please contact Sue Wilson on 5421 1666, mob. 0448 545 974.



MACEDON RANGES SELF STORAGE

- * 7 day access
- * Individual units
- * Affordable prices
- * Insurance available
- * Now Fully Alarmed

Store your:

- * Cars
- * Boats
- * Business documents
- * Furniture etc.

Lot 3, Hoyle Court, Kyneton 5422 1898
(Off Beauchamp St) 5422 3488

CASTLEMAINE—GISBORNE CLEANING SERVICE

CHRISTINE ADAMS, FRYERS ROAD, ELPHINSTONE 3448

Carpet Cleaning Specialists
Duct Cleaning, Window Cleaning, etc.

For all your cleaning requirements

- no job too big or too small -
obligation-free quotes

Tel: 5473 3307 Fax: 5473 3310

Mobile: 0419 006 591

Joanne Duncan

STATE MEMBER FOR MACEDON

MP

Friends,

At the heart of good governance is honesty & accountability, as well as an understanding of the issues confronting the whole of society.

If you have any concerns you wish to raise, please do so.

Feel free to call me on:

5428 2138



Wear a White Ribbon this November

The 25th November marks a very important day in our community. It's the International Day for the Elimination of Violence Against Women or better known as White Ribbon Day.

White Ribbon Day was declared by the United Nations in 1999 following a campaign by a group of Canadian men who were encouraging men to speak out against violence against women following the massacre of fourteen women in Montreal.

On White Ribbon Day hundreds of thousands of white ribbons are worn by men and women across Australia to raise awareness of the need to stop violence against women and children. The money raised through the sale of white ribbons goes to the White Ribbon Foundation for education and male leadership programmes aimed at men and boys around Australia.

Wearing a white ribbon is a personal pledge not to commit, condone or remain silent about violence against women and children.

If you would like more information about White Ribbon Day or to purchase a white ribbon or make a donation, you can telephone (02) 9453 1811 or visit: www.whiteribbonday.org.au

If you or someone you know is concerned about domestic violence; for urgent assistance please call 000, or for help and information, please call LifeLine on 13 11 14 or Mensline Australia on 1300 78 99 78.

Regards Joanne Duncan

WOODEND

Proud to be Pokie-free



FAIRHURST CONVEYANCING
and Secretarial Services

For all your
Property Transfers
Ring Sue Fairhurst on
5427 2382
27 Urquhart Street, Woodend
MVCA & AIC

Licensee:
A. (Sue) Fairhurst
Licence No.:
000316L



Magnetic Websites

Martin Beaumont

PHONE 03 5427 4478
MOBILE 0414 274 988
HTTP www.magneticwebsites.com.au
EMAIL martin@magneticwebsites.com.au

Developing websites for the Macedon Ranges and beyond, ask how we can help you get online

The Cancer and Natural Therapy Foundation

The Cancer and Natural Therapy Foundation provides the following services and resources: information and referral, resource library, professional counselling and support, guest speaker program, support groups, reiki healing, ifas treatment, quarterly newsletter, self help workshops and educational film program.

The foundation holds the following weekly support groups: - Health Awareness Support Group on Tuesdays 7.30pm-9.30pm and Self Empowerment and Healing Support Group on Thursdays 10.00am – 11.30am.

Workshops – Reiki I Workshop, facilitated by Gary McKenzie. For those interested in learning the healing art of Reiki. On Sunday 8 November from 1pm to 6.30pm. Cost \$75 or \$65 for students and pensioners. (Includes handouts and refreshments) All Support Groups, Courses and Seminars are conducted at the Neighbourhood and Community House, Elizabeth Drive, Sunbury.

Phone: 9740 3977

Are your precious records safe?

Given the grim predictions for the coming fire season, please consider the safety of the records of your local group or organization. If you would like to discuss possible storage options, please call in to the Local & Family History Resource Centre on a Wednesday. The Centre's phone number is 5427 3361 on Wednesdays, otherwise 5427 2523. E mail wdhs@vicnet.net.au

Woodend Red Cross Luncheon

On Thursday 5th November the Woodend Red Cross Unit will hold a luncheon in the Masonic Lodge Hall. Everyone is welcome.

Time: 12 noon for 12:30 start Cost: \$7.50

There will be a raffle, a lucky dip and a trading table. A guest speaker has been invited. Please address any queries to Mrs Norma Proctor 5427 1260.

Submitted by J. Prodrazil & P. Wilson.



bluestone

metal work

stone work

traditional

bespoke

box

wrought iron

not made in china

australian fencing

ironbark

sandstone

bluestone

Neil Turner
Traditional fencing,
iron works &
entrances
0409 285 256

supply & install
redgum fencing

redgum

Rilchurn



 Smart. Sharp. Fast.

Need a writer to help promote your business and boost sales?

- Website copy
- Direct sales and email campaigns
- Brochures
- Newsletters
- Media releases and more

Ph Sarah on 0407 208 186 or email sarah@prestoncopywrite.com

www.prestoncopywrite.com

History in the Making.

Members of the Woodend & District Heritage Society congratulate all those who have been involved in the exciting new Children's Park development. At our AGM we invited Jane Walduck, Vice President of the CP committee, to be our guest speaker. Through her excellent talk, Jane enabled us to place on record an accurate account of important future history. In the early days of the project, an historical record of the proposed site had to be prepared. Some of the information which we found in our records appeared in last months "Heritage News." It is repeated here to bring these interesting facts about the previous use of this area, to the wider community.

"In March 28th, 1911 *"The Woodend Star"* reported that the Lands Department proposed a sale of the land known as the 'Shelter Shed'. The Council objected as it intended to use the site for an Electric Power House. As part of the Electric Light and Power Act 1896 No. 1418, the Newham and Woodend Shire Council applied for an order that would authorize the Council to supply Electricity to the town. On the 25th April 1911, the Shire Council moved to request that the site on Allotment 7, Section 12 in the town of Woodend be used for an Electric Power House to generate electricity and as a Shire depot. The motion was put and carried. In Newham and Woodend Shire council minutes dated 24th September 1912 it is noted that the Electric Light and Power station had been registered as a factory. It was powered by a Hornsby suction gas engine which consumed 185 lbs of charcoal per day. The charcoal was supplied by Mr Casper of Slaty Creek and records show that he was still supplying this as late as 1928.

The Woodend Power House was established to supply electricity for public and private purposes, including lighting and motive power. The only photograph of it located to date, shows a rectangular weatherboard building with a corrugated iron roof, at the rear of the Bowling Club."



WOODEND COMPUTER SERVICE

 Sales - Service - Training & Help

THE BANK - OFFICE 3 - 75 HIGH ST WOODEND
JASON JOHNSON - 0400528129
pcs@live.com.au



 alexander technique: an education for living well.

Alexander Technique
 Reduce, manage or eliminate stress headaches, muscle and joint pain. The Alexander Technique addresses the underlying problems and puts you back into control for yourself.

Margaret McGill has been teaching Alexander Technique for more than 20 years.

Contact Margaret on **5428 6461**

RSL News

Remembrance Day the 11th of November, marked most noticeably by the sale and wearing of Red Flanders Poppies, seems to me to be overshadowed by ANZAC Day.

However; the First World War, which the date commemorates the armistice when the War ended, had tragic effects on the Woodend and Newham community both from the 35 volunteers who died during the War and the many who health was ruined by the War.

Three from the Christie Family were killed early in the fighting in France and we at the Woodend RSL are still in contact with a relative. We will be holding a Commemorative Service at the RSL 32 Anslow St. on Wednesday the 11th November starting at 1030am supported by students from Newham, St Ambrose and Woodend Primary Schools and Australian Army Cadets from Braemar College. This is an opportunity for our young people to consider the cost of War. All are welcome and a reception will be held in the RSL Hall afterwards.

Our last General meeting for 2009 will be held in our clubrooms on Wednesday 2nd December at 7 30pm and we will be discussing various options to place the Club on a sound long term financial basis. It's vital that we have an input from as many members as possible, as I am sure some of the options might not appeal to some members.

Submitted by Eric Read. Secretary

Macedon Ranges Oxfam

Macedon Ranges Oxfam Australia Group Invite you to enjoy the wonderful delights of Tieve Tara at our Open Garden on Sunday November 8 from 10am – 4pm at 751 Mount Macedon Road, Mount Macedon. Entry is \$7. Light refreshments available. More information call Eleanor 5428 6775 ... as featured in *Gardening Australia*.

Kyneton Physiotherapy

ROBERT ROUSE
 B. App. Sc. (Physio) Member A. Physio. Assoc.

Move Well. Stay Well!
 Registered for Comcare, TAC, W/Cover, Vet. Affairs
 NO REFERRAL NECESSARY

74 High St., (Corner New St.,) Kyneton
20 years on High Street! 5422 2290



Preparing for another dangerous fire season

The indications are that this will be one of the most dangerous fire seasons for many years. And, NOW is the time to start preparing to reduce the risks of fire danger to you, your family and your property.

Visit the CFA website

The CFA website is a fantastic resource. There are now several new resources that you will find very useful. There is an 'Online Household Bushfire Self Assessment Tool' (cfaonline.cfa.vic.gov.au/mycfa/Show?pageId=publicHouseAssess) and you can also download a 'Fire Ready Kit'. And lots more!

WOODEND FIRE AWARENESS MEETINGS

The Woodend CFA has organised a series of Fire Safety and Community Awareness displays and meetings over the forthcoming months as we build up to what is reported to be a fire season even more dangerous than last season. The three Meetings at the Woodend Fire Station will be presented by official CFA Personnel and will include the latest information on Bushfire Safety and Preparation, as well as informative PowerPoint presentations.

Last year, these meetings in advance of the fire season were poorly attended, and it was only after the fires at Woodend and Daylesford, as well as Black Saturday, that people really took notice.

This year we advise that you take advantage of these important and informative sessions in advance of the season so that you will be better prepared.

- Woodend Market - Sunday November 15 – 9am to 1pm
- Community Meeting at Woodend Fire Station - Sunday November 22 at 12 noon
- Community Meeting at Woodend Fire Station - Monday November 30 at 7pm
- Woomba Community Festival - Saturday December 5 – from 9am
- Community Meeting at Woodend Fire Station - Tuesday December 8 at 7pm

Be careful burning off – even a small fire

For small clearing fires, a permit is normally not needed outside of the Fire Danger Period, however there are still strict guidelines. By law, the size of pile of material being burned must not exceed 2 cubic metres at any time, and you are meant to have cleared a firebreak of at least 3 metres around a fire, to ensure that the fire can be restricted to a controllable size.

The space above the fire, and the space above all ground within 3 metres of the fire, should be free of any flammable material and vegetation.

Larger Fires are controlled under Local Law

If you are planning a large burn off you are required to get a Council 'Permit to Burn' to ensure that a larger fire will be able to be controlled.

If you are unsure, it would be wise to check the local laws via the internet (www.macedon-ranges.vic.gov.au) or visit your nearest Macedon Ranges council information centre, where application forms are available.

The CFA may assist with larger burn offs to ensure that they are handled efficiently and safely. Even in a non-restricted period you could be hit with a large penalty.

The Fire Danger Period will be announced soon, and during this time you are not allowed to burn at any time – unless you have a permit. So keep an eye out for announcements as to when the official Fire Danger period will start.

For further information contact Captain Mick Christie on 0419 870 601 or 1st Lieutenant Mike Dornau on 0409 093 935, call the Woodend CFA on 5427 2356, visit the station in Urquhart Street or our website: www.woodendcfa.org.

The Woodend CFA is a volunteer emergency service, committed to *Creating a Safer Community.*

Submitted by 1st Lieutenant Mike Dornau, Woodend CFA



24sevenalarms.com.au

24 Seven Alarms Aust Pty Ltd

- Alarms installed, Serviced and Monitored
- Data cabling and phone line installation
- Medical Alert Systems
- Access Control Systems PSBL: 732-083-90s
- Digital Video Surveillance CCTV packages: domestic and commercial

1800 247 111/ 03 5427 4411
sales@24sevenalarms.com.au

The fencin' fella

- colorbond
- tubular
- timber
- steel picket
- pool

Mini Earthmoving

Kanga Loaders

Attachments include:
 rotary hoe, soil leveling bar,
 4 in 1 bucket, trenchers,
 post hole diggers, tipper

SHAUN BARRON

MOB: 0407 232 900 or 5422 3488 AH

FOR ALL YOUR REAL ESTATE NEEDS

Denis O'Meara Dip.Ag.Sc
Sales Consultant

Raine & Horne Woodend
 Shop 3a. 81 High Street
 Woodend. Vic 3442
Telephone 03 5427 3200
Mobile 0428 554 102
Fax 03 5427 3022
Email rhwoodend@bigpond.com





rh.com.au
we'll look after you®

TERRY'S GROUND CREW

0400 909 303

ENJOY YOUR PRECIOUS WEEKENDS

**MACEDON RANGES
VOUCHERS ACCEPTED**

**GET READY FOR
SPRING AND SUMMER**

**pensioner
discounts
available**

ADVANCED
**EQUINE
DENTISTRY**



Dr Shannon Lee BVSc

0418 598 621

we
come to
YOU!

Winner 2009 Macedon Ranges Business
Excellence Awards for Young Business Person &
Professional Services categories

Mobile services for Macedon Ranges

www.advancedequinedentistry.com.au

**All news items, articles and community
news columns must be received by 15th
of each month.**



Accountants, Advisors & Planners

Office Locations:

111 High Street, Woodend Ph: 03 5427 8000

2/19 Bourke Street, Kilmore Ph: 03 5782 1273

email: admin@riverwoodgroup.com.au

website: www.riverwoodgroup.com.au

Riverwood Group can offer a *Total Financial Solutions* package for you and your family. Take a look at some of the services we provide:

Taxation

All your taxation requirements to suit individuals and small businesses.

Investments to Create & Protect your Wealth

Managed Funds, Indexed Funds, margin Lending and more

Planning for Retirement

Allocated Pensions, Centrelink Benefits and Payments

Stockbroking

Recommended lists, broking facility available, share updates

Superannuation & Rollovers

Advice, placements, Self-Managed Super Funds and Eligible Termination Payment Advice

Other Services

Home & Investment Loans, Business Loans and Leasing, Income Protection, Life Insurance, Professional Indemnity, Estate Planning and more.

**"We've got
all your
office needs"**

- Colour & black/white photocopying
- Wide format posters
- Design for Business Cards, & flyers
- Binding and lamination
- Ink & Toner Cartridges
- Huge range of stationery products
- Computer accessories
- Printers

**NEW RANGE
OF RECYCLED
PAPER FOR YOUR
BUSINESS CARDS**

**mention this ad
to claim your FREE gift
when you spend \$50
or more**

 **Collier Office**
and Business Assist

Shop 5, 130 High St Woodend

5427 3092

sales@collieroffice.com.au

Obituary

Laurie Thomason AFSM

1.8.1934 – 27.9.2009

The Woodend community has had many distinguished citizens over the years, and Laurie Thomason must surely rank among its finest. Those who have been around town for some time will be well aware of the contribution Laurie has made over the last 47 years, but many who are new to town will surely be most impressed as we give you a brief history of 'Thommo's' story.

Laurie has been a CFA member for over 55 years.

He and his wife Alice and their children moved to Woodend in June 1962, and he immediately joined the local Brigade, quickly rising through the ranks to Foreman in 1963 for two years and then Captain in 1965 – a position he would eminently hold for over three decades.

A brave and daring rescue

In fact, he was captain of the Woodend CFA to 1998, that's an amazing 33 years. Laurie was also Captain of the Rural brigade for 19 years until it merged with the Urban Brigade in 1988.

In that time he led the brigade through some major incidents, none more so than the famous Ash Wednesday Fires in 1983.

Laurie was involved in a daring rescue during the peak of the fire, when he and other members of the brigade drove to the kiosk near the Memorial Cross at the top of the mountain. They successfully evacuated 17 day trippers and Department of Transport workers, who would almost certainly have been trapped by the fast encircling fires. The kiosk was gutted and miraculously there was no loss of life.

In another incident, to demonstrate the ferocity and speed of the fire, Captain Thomason and Lieutenant John Keating headed to Chambers Road, but before they could get there the fire had jumped the road and was heading towards Woodend and Mt Macedon. They headed back along Ashbourne Road and then down the Calder Highway towards Macedon. Before they could get to the Lagoon, the fire had jumped the Calder and was headed towards the Mount.

Valuable service to the State

His volunteer work then spread to serve the broader community, our region and then the entire State of Victoria.

He was Deputy Group Officer for the Mt Macedon Region prior to becoming Group Officer in 1986, where his responsibilities included the co-ordination and control of all CFA Brigades within the group on the fire ground.

He also made a major contribution to the Victorian Urban Fire Brigades Association, starting in 1980 and continuing for over 20 years. He served as President for two terms and was awarded Life Membership in 1990.

Queens Birthday Honours List

Laurie worked extensively for the CFA on a broader scale, starting as a Project Officer.

In 1985 he received his National Medal and Bar for dedicated, distinguished and diligent service to his Brigade, Region and the Authority, receiving a further Bar in 1993 as further evidence of resource and devotion to his duty.

One of his highest recognitions came in 1986, when he was one of only 30 Australians invited to Government House to receive an Advance Australia Foundation Award for making "an outstanding contribution to the advancement and enrichment of Australia, its people and way of life", and in particular for his "positive contribution to Victoria's volunteer fire fighting service".

His work with the CFA culminated in 1989 when he was appointed to the prestigious position of State Board Member and would remain on the Board for three terms.

In June 1991, in the Queen's Birthday Honours List, he was awarded the Australian Fire Services Medal (AFSM) for his distinguished and exemplary service to the Victorian CFA. And in 1993, he was also made a Life Member of the Woodend Fire Brigade.

Centenary and New Station

The Woodend CFA is very fortunate to be able to work out of an excellent facility, with the new station opening soon after the Brigade's Centenary year in 1996. The fantastic community resource would never have eventuated without the tireless efforts of Captain Thomason and his team over several prior to its construction.

Important Members of the Community

Laurie's motto was simple but significant ... "give back to the community what the community has given to you".

He and Alice were also local business identities, establishing Topline Dry Cleaners in Woodend and later Gisborne, and when they retired in 1995 (after 30 years) they were the longest serving traders in town at that time.

In his spare time, he was involved with the Woodend Scouts for over 34 years, starting as a Scout Master in 1965. He was a Drum Major with the Black Forest Highland Band. And a charter member of the Woodend Lions Club in 1972, becoming President in 1975, board member and active member for more than 10 years. On top of that, he has also been actively involved in the Woodend Bowling Club.

His contribution to the local community was recognised by the Shire in 1982 when he was presented with the 'Citizen of the Year' Award.

He fights his most difficult battle

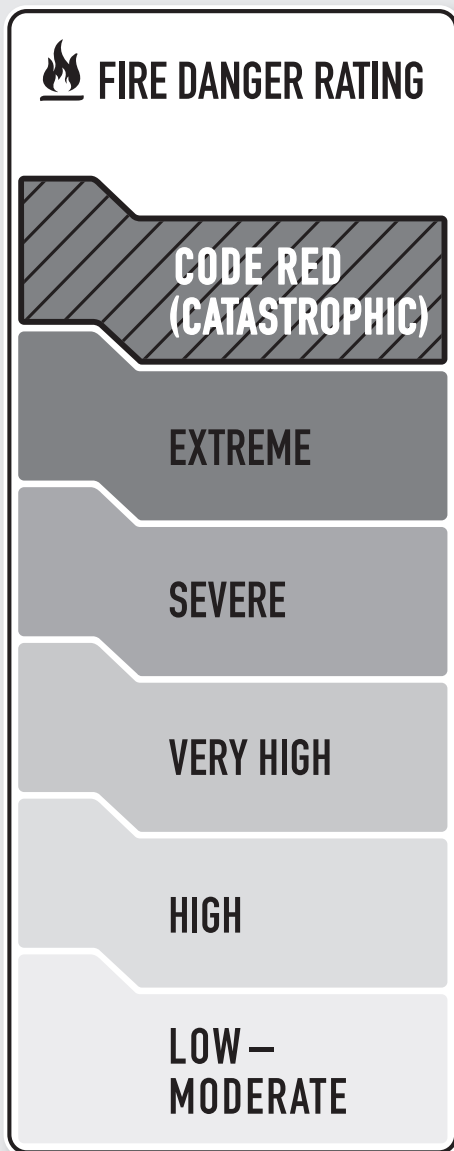
Laurie was diagnosed with a serious illness some time ago, and has fought his way through this long and difficult time with his trademark tenacity and courage. Even in these difficult recent years he continued to have a significant impact on the brigade, utilising his significant experience to assist the current brigade management team and also as mentor to guide many of the newer members. He was even regularly visiting the brigade up until early this year, where his sense of humour would disguise the personal problems he was going through.

The Woodend CFA, on behalf of the community, would like to pass on our deepest sympathy and best wishes to Alice and the Thomason family.

Prepared by Woodend CFA 1st Lieutenant Mike Dornau

The New Woodend Star • November 2009





- ▶ If you live in a bushfire prone area the safest option is to leave the night before, or early in the morning.
- ▶ The safest option is to leave early in the day if you live in a bushfire prone area and your Bushfire Survival Plan is to leave. Only stay if your home is well prepared, well constructed and you can actively defend it.
- ▶ The safest option is to leave early in the day if you live in a bushfire prone area and your Bushfire Survival Plan is to leave. Only stay if your home is well prepared and you can actively defend it.
- ▶ If you live in a bushfire prone area and your Bushfire Survival Plan is to leave, the safest option is to leave at the beginning of the day.
- ▶ Check your Bushfire Survival Plan.
- ▶ Check your Bushfire Survival Plan.

New Fire Danger Ratings. Look for them, act on them.

Victoria has adopted the new national Fire Danger Rating scale to help individuals and communities understand the level of fire danger on any given day.

The new ratings recognise the significant increase in severe bushfire conditions over the past decade and the greater level of danger to the community, as experienced on Saturday 7 February 2009.

It's important for all Victorians to be aware of the ratings, which will feature on weather forecasts, in newspapers, websites, radio and TV.

The new ratings provide a clear prediction of likely fire behaviour, including how difficult it would be to put a fire

out once it has started. They provide information on:

- The sort of bushfire behaviour that could be experienced on that day.
- The type of threat a bushfire may pose to life and property on that day.

Be aware of the Fire Danger Rating every day during the fire season, and be prepared to take the appropriate actions.

For more information go to www.cfa.vic.gov.au

PREPARE. ACT. SURVIVE.
FireReady 

For more information visit www.cfa.vic.gov.au

Heritage Society News

As promised, this month I want to draw your attention to the loss of an important part of the district's history. This is a cautionary tale, and hopefully one we can learn from as we watch some of our important local buildings gradually falling into decay.

Walter Burley Griffin, an American Architect, and his wife Marion, (also an Architect), are well remembered as the controversial winners for the 1912 competition for a design for Australia's capital. Apart from getting hopelessly lost driving around its curving streets, most visitors to Canberra now appreciate the originality of Griffin's vision and his name now takes its place in the nation's history along side that of Jorn Utzon. But Walter Burley Griffin also left his mark in many other places and one of these was in our own district. In 1997, a house he had designed in Dickens Street, Woodend was classified by the National Trust. In the February edition of "Heritage News" that year, I included this excerpt from the 'Statement of Significance.'

"One of Walter Burley Griffin's most brilliantly planned homes of Knitlock construction, the Wills Residence (5 Dickens Street, Woodend) is of National significance. The plan form is a combination of the two diamonds and two squares all meeting at a central point. It was built in 1929 as the country home of Alban H. Wills, a successful Melbourne businessman who had opened an Edison Phonograph and Record Shop in Charing Cross, Bendigo. Wills was one of Griffin's best clients, having had four projects built to Griffin designs..... The Wills residence was built at Woodend because it was approximately half way between Melbourne and Bendigo.....Mr Wills would stay in his Woodend house when travelling to and from Bendigo....."

When the house was placed on the Victorian Heritage Register, again it met their strict criteria: "Heritage places and objects are natural and cultural environments that are of special value for the present community and for future generations." In their description of the house they stated "The Wills House, Dickens Street, Woodend is of architectural, historical and scientific and technical significance to the State of Victoria."

Next time you are driving around Woodend, have a look at this property in Dickens Street. The building that once brought many people with an interest in architecture to Woodend is now a neglected heap of rubble. A sad loss for our community and the State and Nation.

The Heritage Society played an important part in getting this building on to the State Register, but as the property was privately owned, we were powerless to do more. Building a love and awareness of our history so that people care for our heritage is a major aim of our organization. If you care, please show your support by joining us.

Submitted: Janet Hawkins.

Welcome to the Woodend Star Kids Club

October Birthdays

3rd	Ria Thompson.....	Turns 12
3rd	Bailey Thorne	Turns 4
4th	Elizabeth Brand.....	Turns 8
6th	Alice Meacham.....	Turns 8
7th	Alex Plant	Turns 4
8th	Jared Gregoir.....	Turns 12
9th	Jacob Lamb.....	Turns 8
9th	Harry Sanderson	Turns 12
10th	Alice McKinnon	Turns 8
14th	Allan Johnson Molina.....	Turns 5
20th	Keira Lupson.....	Turns 8
21st	Jemparra Hickie.....	Turns 3
22nd	Aden Cooper	Turns 8
24th	Casey Lupson.....	Turns 11
25th	Bryson Gilbert.....	Turns 8
26th	Juliette Johnson Molina	Turns 2
27th	Jamieson Muir.....	Turns 9
28th	Kheldar Tanner.....	Turns 12
28th	Hayden Habjan	Turns 13
29th	Emily Davidson.....	Turns 9
29th	Liam Gregoire.....	Turns 11
29th	Zoe Forristal.....	Turns 13

Happy Birthday Everyone!

JOIN THE WOODEND STAR KIDS CLUB

Fill in your details below and place in the drop-boxes. Age limit is restricted to 13 years old and under.

Full name: _____

Address: _____

Date of Birth: _____ Age: _____

Phone: _____

You can collect your birthday surprise by visiting Collier Office & Business Assist in the Woodend shopping centre



The 'Wills House' in Dickens Street Woodend. This photograph was taken in 1995 when the house was still standing and used for storing hay.

WRITING SERVICES

a few good WORDS

Editorials, Publicity, Advertising, Proof-reading, Letters.

Nadine Hartnett
Freelance Writer

0439 399 838
nhartnet@blapond.net.au

PSYCHOLOGIST

Sam Luxemburg

Registered Psychologist

- Personal Counselling in Woodend & Romsey (Medicare rebate available)
- Counselling Training
- Myers-Briggs personality testing

Phone: 0428 270 401
www.luxcollege.com.au

TRADE & SERVICE DIRECTORY

AIR CONDITIONING

**SPLIT SYSTEMS
INSTALLATION AND
SALES**
Efficient heating & cooling
For free quote, phone Dave
DW Air 0407 248 454

ANIMAL CARE



Macedon Ranges Pet Care
An alternative to
kennels & catteries
A reliable home care service for pets & farm animals,
servicing the Macedon Ranges since 2003
Phone Judy on 5427 1352

ANIMAL CARE



DIANNE'S PET SITTING SERVICE
Your pets lovingly cared for in their own home
Woodend and Macedon
Phone: 0419 326 281
E-mail: dianne@woodendpetsitting.com

BUILDER



Mark McCartney
Baiaame Nominees Pty Ltd
Period & Modern
Construction
Kitchens, Bathrooms,
Renovations, Decks, Pergolas,
Home Maintenance,
Complete Project Management
Phone: 0411 555 925
E-mail: baiaame1@optusnet.com.au



COUNSELLING



Keryn Allan COUNSELLOR
Dip. Prof. Couns.,
M. A. C. A.
Grief & Loss
Trauma
Stress, anxiety &
depression
Anger management
Workplace issues
Behavioural problems
Phone: 0417 011 300
Email: kezallan@ozemail.com.au

COMPOST

SIMPLY COMPOST
BRING YOUR GARDEN TO LIFE. SUPPLY NUTRIENTS,
HELP THE SOIL STRUCTURE, SAVE WATER
ORDER SOME COMPOST TODAY
ONLY \$8 PER 30 LITRE BAG
FOR MORE INFORMATION OR TO PLACE AN
ORDER PHONE ROSS: 03 5427 0867
EMAIL: SIMPLYCOMPOST@LIVE.COM.AU

DRESSMAKER

Beryl's Tailoring
DRESSMAKING, ALTERATIONS,
BRIDAL, EVENING & DAY WEAR,
LADIES AND MEN'S REPAIRS
Beryl Bachelor
QUALIFIED DRESSMAKER, NEWHAM
BY APPOINTMENT ONLY
MON TO FRI 9 - 5
5427 0568 0418 510 179



ELECTRICIAN

**Macedon Ranges
Electrics**
REC 17836
5422 2182
Dan McCarthy - Mob 0417 542 295
Fax 5422 1188
31 Redesdale Rd, Kyneton, VIC 3444
PO Box 1125
Email sparky@macedonrangeselectrics.com.au



EQUINE SPORTS THERAPY

EasyCare Hoof Boots
Hoof Boots from \$110
Saddles from \$279 kids
Barefoot & Freeform Treeless saddles
Hepburn Equine Sports Therapy
Woodend www.hest.com.au 0419 326 281



FIREWOOD

O'Callaghan Bros
REDGUM FIREWOOD SUPPLIERS
**SPLIT RED GUM
FIREWOOD**
Excellent Quality Delivered Dirt Free
Ph 7 days
0407 036 800 0429 957 091

HANDYMAN

Rowdy's Handyman Services
Home & Garden Maintenance
No Job Too Small!
Carpentry, Plastering, Tiling
Painting
P 5427 0072
M 0416 274 732

HOME MAINTENANCE

**Home maintenance & landscaping
service including decking,
pergolas, carpentry & painting.**
Stuart 0409 150 629
AH 5427 2465

METAL GATES

BVM Metalcraft
SPECIALIZING IN OLD WORLD AND
MODERN STYLE GATES
STEEL BALUSTRATING INCLUDING STAINLESS STEEL
ROPE AND WROUGHT IRON, PUNCHED RAIL FENCING
ALL MATERIALS USED ARE
GALVANIZED OR ZINC PLATED
FINISHED IN YOUR CHOICE OF POWDERCOAT
OUR DESIGN OR YOURS
METAL POLISHING - ALLOYS, BRASS, STAINLESS STEEL
CONTACT BEN 0422 288 768
FOR A FREE QUOTE

STONELAYING & PAVING



Stonemason & Paver
specialising in
• Retaining Walls
• Drystone Walls
• Stone Houses
• Paving
• Over 20 years' experience
Cameron Dunn
Ph (03) 5427 4778 Mob 0429 162 589

TREE SERVICES



A&P Tree Services
• tree pruning / removal • stump removal
• tree planting / transplanting • rope & harness climbing
• confined space removal • fully insured
Professional commercial & residential tree maintenance
all work carried out by qualified arborist
Call Anthony 0417 059 969

Trade Page Ads are \$27 per month inc GST. Pay for 11 months in advance and receive 10% discount.

SPORTS NEWS

Women's Tennis Invitation

The Woodend Tennis Club is holding a Grading Day on Tuesday, December 1 for women interested in joining the midweek competition played at courts across the Macedon Ranges and Sunbury.

Players of all levels, whether they wish to be a permanent or emergency player, are invited to go along to the tennis club, behind the Woodend swimming pool, between 10am and 1pm.

Children are welcome on the day with current players often bringing their children along on match days (NB: no formal child care is provided).

The next season starts February and matches are played against other club teams each Tuesday from 10am to around 1pm (no competition during school holidays). It is a great way to meet a whole range of people in the community, with a luncheon after each match.

Anyone interested in playing is asked to contact the club's competition coordinators. Midweek Ladies Contact: Kellie, 5427 1857 Juniors: Murray, 5427 4487; Open Night Tennis: Paul, 5427 2510, Saturday Open: Nadine, 5427 1571.



FLYING START FITNESS
make it happen!

• PERSONAL TRAINING • GROUP FITNESS

Gordon Muir
Certificate III & IV in Fitness
0425 111 765



Woodend Health & Fitness

- Wide range of equipment
- Group fitness classes available
- Teen's Gym sessions available
- Personal training available

Start your fitness campaign today
30 Wood Street, Woodend
Phone Brian on 5427 1181 or 0488 016 709

Woodend Warriors

Sue Peacock recently competed in the Masters Games in Sydney in Rowing. She competed in 4 events and came home with two gold and one silver. Two well known Woodend Doctors achieved amazing results in the Melbourne Marathon and Half Marathon. Richard Bills finished the Marathon in 3 hours 44 mins a PB. Karen Aarons competed in her first ever Half Marathon and ran an amazing 1 hour 43 seconds. It's great to see the doctors of this town leading the way in health and fitness and achieving personal goals along the way. Fran Pidgeon was another to complete the marathon, beating her BP by 44 minutes.

Tai Chi

Classes held in Woodend

Relaxation, flexibility, balance

Beginners Welcome

Enquiries and further information: 0407 349 497

News from Newham

This is the last time I will be writing, so there are people wish to thank I started these jottings 3 years ago as part of Grant application obligations to let people know what was going on at the Hall. As a result we now have a community Planning Group being capably looked after by Hilary Roberts.

What a mighty job Caroline Robb has done at the School – please buy a brick for the music room and support the School Fair on 14th November – if you would like to have a stall, contact the school on 5427 0235 or turn up for a working bee on 7th November.

To Julia and Michael at the Store – a big thank you for giving an everyday focal point for the community to meet informally, and to Geoff Cohen who fought for us to have a letterbox a big thank you. These are the small things in life that give us a village and community.

A Sustainability Forum is being organised across the School and the Hall by one of Newham's unsung heroes Jim Sansom. Such a big undertaking needs ideas and helpers so please contact Jim on 54 270 408.

Last but not least ... The Hall. As most people are aware the works at the Hall were started 3 years in October with the floor. It was in dire need of renovation, conservation and above all new 21st century facilities including a kitchen capable of safe food storage and handling. Whilst the more modern additions are not everyone's cup of tea, there were Heritage regulations which meant we could not put on "more of the same".

One person, who must be thanked, is Roger Rugless. Roger has worked diligently and quietly and to an exceptional standard and his years of experience as a Civil Engineer stood us in such good stead.

As to where the works are at, I have no idea. I find my position untenable as a member of the Committee and the Hall and have now resigned. For further information please contact Ian Miller (President) or again Nick Massie (Project Manager) or Dale Thornton (MRSC).

I want to thank Val & Barrie Sutton, Steve Mahon, and Ian Miller, for the vast amount of work and help they have given to me over the last 3 years Joanne Duncan, Fran Bailey, our Ward Councilors past and present (particularly Geoff Neill and Joan Donovan), and Kim Chadband who has guided and supported us with kindness and aplomb.

This has been a steep but valuable learning curve for me in lots of ways and am leaving with some of the best things one can have – friends – and I am truly blessed.

Submitted by Sally Stabback