

THE NEW WOODEND STAR



Circulation of 3190 throughout
Woodend postal district, Newham, Hesket, Ashbourne,
North Woodend, Hanging Rock, Carlsruhe, Cobaw.

AN INITIATIVE OF THE ROTARY CLUB OF WOODEND

October 2009

A Monthly Community Periodical

First Publication 1997

Volume Thirteen No. 9

Woodend Children's Park Opening!



The eagerly awaited completion of The Woodend Children's Park is in sight. The park will be opened officially on Tuesday 27th October by Peter Batchelor MP, Minister for Community Development and Macedon Ranges Mayor, John Letchford. See www.woodendweb.org/childrenspark for details. This marks the end of a three-year journey for this community-led project. The experience has been incredibly rewarding for all of the park's volunteers, and has brought together people of all generations and corners of the town together to create this valuable meeting place for the whole community to enjoy.

A community celebration is also planned and everyone is invited! Entertainers including Pollyphonics and the Fun Factory will be present, along with a Scout barbeque, speeches and free giveaways. The community celebration kicks off at 11am on Saturday 31 October and everyone is welcome!

Under the guidance of project managers, 2MH Consulting, the complex construction involving many different contributors is drawing to a close. Callaway Constructions is doing an incredible job in creating the two main barbeque shelters and the iconic Robbie's Lookout. The pathways which make the park accessible to all have been assembled by local businesses Alsaf

Concrete, Woodend Premix, Michael White Landscaping & Excavations and Tylden Quarry's donation of crushed rock. Fencing is being constructed by Neil Turner with Unique Redgum generously donating the redgum and ironbark. MR Projects is proving an invaluable resource in assisting with landscaping and drainage, as is the assistance of Peter Newell from Woodend Nursery, and Trentham Mini Services & Earthwork. The magnificent mature trees on the park site have been largely cleaned up thanks to Graham Hunt from Tree Checks Tree Management and our plumbing and drainage issues have been well handled by ADD Plumbing & Gas. Altitude Electrics are ensuring that the park will have a state of the art power supply for live entertainment in the park and for powering the many barbeques. An incredible thank you to all these business who are donating time and expertise to this project. An official, permanent acknowledgement of all these businesses and the many others will be permanently erected in the park.

As many people as possible are needed to help at a grand working bee on Sunday 11th October at 9.30am. BYO rakes, shovels and wheelbarrows to help rake softfall and plant thousands of natives to complete the park. Woodend Lions will be catering a barbeque lunch and Woodend Landcare will be on hand with expertise and man power. This grand working bee will complete the landscaping of the toddler area, the natural play area near Pyke Street, and the Five Mile Creek embankment. If you can help please email jane@overwood.org before the day. (Children must be supervised on this day – for safety reasons the play equipment cannot be used until the park is opened).

Congratulations to everyone who has made this project possible. Woodend Children's Park will be a valuable social asset for this region and is a living example of volunteerism at its best.

Ribbon Cutting Ceremony (All welcome!)
Tuesday 27 October 2009 – Nicholson St, Woodend
9.30am for 10–11am for coffee & speeches
Official opening by the Mayor, Cr John Letchford and Peter Batchelor MP, Minister for Community Development
RSVP essential: childrenspark@woodendweb.org or telephone 5427 3606

Community Celebration (All welcome!)
Saturday 31 October 2009 – Nicholson St, Woodend
11am–2pm for entertainment, food & play
Bring your family to explore and enjoy this fabulous new community park
RSVP is not required for the community celebration



YOU'RE INVITED TO THE
WOODEND CHILDREN'S PARK

OPENING

Soup for the Kids

Talking Threads, a local group of community minded sewing enthusiasts, are holding their 4th Annual Fundraising Soup Luncheon again this month. This year, proceeds from the lunch will be donated to the Cambodian Kids Foundation.

Not only will this even be an afternoon of warming soups, home-cooked treats and champagne, but a chance to win some fantastic hand-made products lovingly made by the members of Talking Threads.

The soup Luncheon will be held locally on Tuesday 20th October, from 12 noon til 3:27pm. Tickets are \$25 and available at the Westpac Bank. For more information contact Shaz 5427 1692 or Rhonda 5427 2085. Hope to see you there!



SUBSCRIBE TO THE NEW WOODEND STAR

Do you live outside the *New Woodend Star* distribution area? be sure to receive your copy every month by subscribing. A yearly subscription of 11 issues is just \$27.50. Post to *New Woodend Star, C/- The Bank, 75 High Street, Woodend 3442.*

Name: _____
Address: _____
Phone: _____ Enclosed: Cheque/Money Order for \$27.50

The New Woodend Star

An initiative of the Rotary Club of Woodend Inc.
The Bank, 75 High Street, Woodend, Vic. 3442
ABN 32 685 225 161 No. A0021518E

Layout & printing by **Woodend Copy Centre**

For people wishing to submit stories, articles, letters to the publication, simply place the information in the strategically placed drop-boxes.

These are located at the Liquor Shop,
Collier Office & Business Assist, The Bank @ 75 High Street
and Woodend Newsagency.

EMAIL articles preferred: sales@collieroffice.com.au

Circulation: 3190 copies throughout Woodend and district

Disclaimer: The opinions and views expressed by the contributors are theirs alone, and do not necessarily reflect the views and opinions of the Committee of Management, or the Rotary Club of Woodend.

The Committee reserves the right to edit articles for length and clarity.

Committee: Barry Naphine, Ivor Johnson, Claudia Green, Irene O'Duffy, Alexia Downie, Joy Barker and Jane Watters.

Closing date for inclusion of articles or advertising for each issue is the 15th of the month prior to publication.



Advertising available

For all bookings and artwork submission please contact Alexia 5427 3092.

Artwork to sales@collieroffice.com.au

This newsletter is supported by



ADVERTISERS PLEASE NOTE:

Unless specific dates are given for inclusion - all advertisements will be placed and charged for until notified otherwise **IN WRITING.**

'Singing In The Ranges'

The Cantorion Cymreig Victoria Welsh Choir has performed at the Royal Albert Hall in London, have toured overseas several times, performed on both BBC and ABC radio ... and now they are bringing their unique sound to perform in the Macedon Ranges.

Special Performance in Kyneton

This special performance, in support of the Woodend CFA, will include a choir of more than 60 wonderful voices and includes Woodend CFA member Keith Beman, who recently toured with them to Great Britain.

The entertaining 2 hour show includes Welsh hymns, folk and traditional songs from around the world, spirituals, classical songs and opera choruses, and songs from 'the Shows', with informative introductions to each item. There will also be local support acts featuring internationally renowned Huw Jones on Harp and the choir 'Women of Note' and requests will be considered. Kyneton Town Hall, Sunday October 18 at 2pm \$25 per person (including light refreshments) \$20 for pensioners and CFA members. Credit Cards or cash at the door.

A world class choir

Formed in 1980, the Cantorion Cymreig Victoria Welsh Choir is a traditional Welsh male voice choir singing in four-part harmony, with some of the repertoire sung in Welsh ... 'the language of heaven'. The members come from Melbourne and surrounding areas, as well as from Bendigo. They toured Wales in 1995, and again in 1999 when they became the first Australian Welsh male choir to compete in the Welsh National Eisteddfod. In 2004, they again made history when by winning 3rd prize at Newport.

Advertising Rates for 2009

New advertising rates per month from 1/1/09

All rates include GST & are priced per month.

Business card (55mm x 90mm)	\$41 inc GST
Trade Page	\$27 inc GST
Quarter page (90mm x 134mm)	\$90 inc GST
Half page (90mm x 277mm)	\$160 inc GST
Full page (190mm x 277mm)	\$280 inc GST
Insert (of your printed brochure)	\$180 inc GST

Advertisers: Please note - it is in your interest to book and pay for a year in advance, as a 10% discount applies to any full year pre-paid booking.

Any existing pre-paid ads will revert to the new rate on completion of the pre-paid period.

Information for advertisers

Any accounts queries can be made to Joy on 5427 4089 during office hours.

Mail should be directed to: **New Woodend Star, C/- The Bank, 75 High Street, Woodend 3442.**

Drop boxes for articles are at: The Bank (75 High Street), Woodend Newsagent, Collier Office & Business Assist and Marks' Liquor Shop. Copies of the publication will also be available.

Woodend Star Publication Dates for 2009

November	26th October
Dec / Jan	30th November

Advertisers and contributors are reminded to book in by the 15th of the month with artwork to follow immediately. Changes to advertisements, new advertisements or cancellations should all be made by email or in writing.



Woodend CFA member Keith Beman performs in the *Victorina Welsh Choir*

You can find out more information about this wonderful group by visiting the website: www.vicwelsh.asn.au – the site also includes several songs performed by the choir.

The show is proudly supported by Keatings Real Estate, Firebird Motors and Collier Office and Business Assist, with proceeds to support the Woodend CFA. For more information call Woodend CFA members Keith Beman 5427 1463.



Woodend Rainfall Report 2009

Each month we add the rainfall details and the year to date total. Our rainfall report shows 2004, 2005, 2006 2007 and 2008 comparisons. Please note that your own rainfall readings may not exactly match these. These readings are the official BOM readings and have been taken in the same location in Woodend for many decades. All measurements are in millimetres.

	2004	2005	2006	2007	2008	2009	
January	21.2	47.4	49.8	83.5	17.1	0.0	Jan
February	6.2	72.2	53.1	27.4	22.1	0.0	Feb
March	19.0	5.8	20.6	35.7	25.4	32.3	Mar
April	41.2	18.8	46.4	20.2	20.4	38.6	April
May	39.3	13.6	58.8	95.7	43.7	32.5	May
June	98.0	116.7	36.0	105.1	88.7	56.0	June
July	93.8	76.9	91.6	83.3	112.5	91.9	July
August	76.1	125.0	30.8	34.8	52.2	104.8	Aug
Sept	31.7	55.2	50.6	49.8	42.0*		Sept
Oct	38.9	49.8	5.2	12.1	13.0*		Oct
Nov	111.0	72.4	13.0	91.0	67.2		Nov
Dec	144.2	40.0	31.0	101.2	96.0*		Dec
YTD:	720.6	693.8	486.9	739.8	600.3	356.1	YTD

Reminder: We are now on Stage 3A water restrictions.

Figures for 2008 include information from a different location indicated by *. This has resulted in a slightly different total than the official BOM totals.

For the year to date 31/08/09 there was rainfall of

356.10mm

1 inch = 25.4 mm therefore the total year to date is 14.01 inches

Saving Grace

Pre-loved Designer Fashion

Sale on now

OPEN 10am – 4pm
Wed Thurs, Fri, Sat & Sun
Mon & Tues by appointment
In the Garden behind
42 Anslow St Woodend
(next to Café Colenso)
0431 734 897



Woodend Art Group

As always, the onset of Spring heralds a host of busy activities and at the Woodend Art Group things are underway for their Annual Art Show. The big studio at the rooms is getting a bit of a facelift, with a coat of paint and new blinds. This will add to the overall ambience of this atmospheric old building, especially when the walls are filled with high quality art works. A feature of this show each year is the judging and announcing of awards, kindly donated by local sponsors. This takes place at the official opening on the Friday night. On the Saturday and Sunday there will be demonstrations by well known local artists, including Helen Cottle and John York. The dates this year are 17th and 18th October (with the opening on 16th at 7:30pm) held at the old tea rooms, Woodend railway station, from 10-4. You will also be able to find out more about the art group and its program of classes and workshop activities when you visit the show.

OUR NEW SUMMER HATS ARE COOL



We have new stocks of pretty summer hats for girls to complement our colourful headbands. We also have protective bather suits and sandals for toddlers. **What's New at Zappa-do?** Aka Pipik Australian-made baby slings now in Silver Wattle too!

ZAP3471

ZAPPA-do Baby and You!

Shop 3, 87 High Street, Woodend. Ph: 5427 1270

Macedon Ranges Shire-Wide Koala Survey

Where are our Koalas and when did you last see one in the wild? Are Koala numbers lower today? Can you help find them? These are some of the questions being asked in the Macedon Ranges Shire wide Koala survey as part of WAM - Wildlife Awareness Month in October.

Macedon Ranges Wildlife Network invites all residents and property owners in the Macedon Ranges Shire to become aware of koalas living in their area and help give better insight to koala populations and distribution throughout the Shire.

Koala surveys conducted over 30 years by the Macedon Ranges Conservation Society Inc. on and around Mt Macedon show that the population of Koalas has declined by 85% and by all indications, numbers are still declining.

Pressures on the Koalas in the last 10 years include increased numbers of fires, clearing of trees for development, Koala disease and an alarming increase in numbers killed on the roads and by dogs.



Apart from the Koala Counts at Hanging Rock Reserve, by the Australian Koala Foundation, Macedon Ranges Shire Council and Hanging Rock Committee ... there appears to be no current documented knowledge or information available on how large, healthy or fragmented the Shires Koalas populations are.

Between 24th and 31st October residents are asked to pick ONE day to count koalas on their property and fill in our survey.

Survey forms are available from the Macedon Ranges Wildlife network website: www.mrwn.org.au and also from the Macedon Ranges Shire website: www.macedon-ranges.vic.gov.au for more information contact email fauna1@live.com.au or Linda on 0438 363 242.

Our communities must start to take action now, if we don't take care and protect our koalas, there is a very real probability that they will become rare if not extinct in this Shire in 10 years or so.

During the month of October members of Macedon Ranges Wildlife Network will have an information trailer and raffle at many of the local markets and fairs. Please drop by and say hello. Information on this survey and other Wildlife related topics will be available. All funds raised are used to support wildlife shelters, carers and rescuers to continue their work in the rehabilitation of injured and orphaned Wildlife.


submitted by Linda Healy on behalf of Macedon Ranges Wildlife
page 4




Grantra
HOME IMPROVEMENTS
Specialising in Bathroom Renovations

PO Box 736, Woodend 3442
0418 175 877
www.grantrahomeimprovements.com.au

Master Builder
REGISTERED Building Practitioner



**Total
Financial
Solutions
Australia**



*Helping you save
for a
"Rainy Day"*

Bob Nixon
B.Com., Dip.Ed., Dip.A.I.I., Cert. IV Fin. Plng., F.A.F.A.
Authorised Representative,
Total Financial Solutions Australia Pty Ltd
ABN 58 003 636 968 AFSL No.246545.
Shop 10, 34a Hamilton Street. Gisborne Vic 3437

Ph: 03 5428 0123
Fax: 03 5420 7710
E: bobnixon@netcon.net.au
W: www.bobnixon.com.au



What a night out for the Woodend Trivia night


Saturday August 22nd was a great night out for many of the mums, dads and friends of Woodend Playgroup. The night was a huge success for everyone, especially Woodend playgroup as they raised \$2225 towards new equipment for the kids.

MC for the night was Scott Brennan who had everyone in stitches all night. There were lucky door prizes, chair prizes, silent auctions and many other games that everyone took part in, not to mention loads of great trivia.

The Woodend Playgroup would like to send out a huge thank you to the following business, because without their support, the night would not have been such success and without their generosity Woodend Playgroup would have never raised so much money.

Thank you to: Hanging Rock Winery, Bourkies Bakehouse, The Spa, Commonwealth Bank, Woodend Dental Group, E'Clips Hair & Beauty, Woodend Pharmacy, New Leaves Bookshop, Kosmac & Klements, Bodywise Underwear, Macedon Views Restaurant, Woodend Nursery, CarsaMatic, Contours, Woodend Bakery, Baker's Delight, Coles Woodend, Joan Gladman Real Estate, Adventure Park Geelong, Eureka Skydeck 88, Scienceworks, Victorian Winery Tours, Luna Park, Puffing Billy, Melbourne Observation Deck, Bug-a-lugs, Terra Rossa Restaurant, RT Edgar Real Estate, Campaspe Country House, Simply Health, Timberlane Furniture & Design, Bunnings, Murray River Paddle steamers, Blue Orange Concepts and Scott Brennan.

We look forward to having your support again for the next trivia night, thank you.



ARCHITECT
COMMERCIAL
DOMESTIC
ALTERATIONS

ARKITURA **0429 844 800**
pty ltd

IAN SCOTT B.ARCH(HONS) EDIN. ARBV
PO BOX 806 / 49 WATERWORKS RD / WOODEND VIC 3442

Discover your
inner artist

ART & CRAFT MATERIALS

Join our Craft Workshops

• Beading • Card Making • Scrapbooking •

43 Anslow St. Woodend **5427 4455**

Operation Cleft: Gift a smile for life

Kai Saldinari of Woodend Rotary Club has some laying hens who have been bringing a smile to the faces of Bangladeshi children for the last few years!

The Chair of Operation Cleft, Brian Martin (www.operation.cleft.org.au) says that the organisation continues to grow and change the lives of many children in Bangladesh. Over 4350 cleft lips or palates have been repaired part way through a five year strategy. The project was initiated by the Rotary Club of Box Hill Central and Kai has made a local commitment

Bangladesh is one of the poorest countries in the world and has about 300,000 people with untreated cleft palates. A repair operation costs about a year's salary for villagers, so most of the 3500 babies born each year with the condition are untreated. In addition to funding operations, Rotary has been helping with expansion of speech therapy services, developing an in-country project team and ongoing training of surgeons, speech therapists and community health workers.

Kai (currently teaching in China) brings along a dozen eggs from her hens to be auctioned at the weekly meetings of the Woodend Rotary Club. Anyone bidding has to donate the bid to the project and the winner gets to take home a dozen fresh, free range and home grown eggs for between \$6 and \$10. There is stiff competition and Kai manages the auction carefully so that she usually raises about \$30-40 a night. The record was over \$300. Each operation costs \$300 so Kai's cackle-berries have funded over a dozen lovely smiles. While Kai is away, Steve Nangle is keeping the eggs rolling.

If anyone is interested in attending a Rotary meeting to enjoy our meetings or help our members make a difference to our local and international communities, contact President Eb on 5427 1629.

Woodend Lion's Club Carols by Candlelight

Woodend Lions Club is currently preparing the program for its annual Carols by Candlelight. The Carols will be held on Sunday evening, 13th December.

We invite all interested people, schools, music and dance groups, creative individuals, who wish to be part of this exciting program to contact the Carols coordinator Janelle Robbins by email at tobana@hotmail.com or leave a message on 5427 1704 and we will get back to you.

submitted by Janelle Robins

MASSAGE THERAPY
Natalie Taranto
Reconnect and Restore the Flow Within

Remedial Massage Therapist

- Deep Tissue
- Relaxation
- Pregnancy
- Reiki

\$10 off initial visit

Now at McCubbin Cottage
58 Urquhart St. Woodend
Call for an appointment
0402 534 983
mobile massage also available





We deliver to your home the

freshest, best quality, certified organic fruit & vegetables available & guarantee this 100%

Pick from a range of pre-selected boxes or select your own order from our weekly availability list

Phone: **0409 386 875**
or **5429 1156**
email: vivien@netcon.net.au

www.vivsorganics.com.au

Kyneton Physiotherapy

ROBERT ROUSE

B. App. Sc. (Physio) Member A. Physio. Assoc.

Move Well. Stay Well!

Registered for Comcare, TAC, W/Cover, Vet. Affairs
NO REFERRAL NECESSARY

74 High St., (Corner New St.,) Kyneton

20 years on High Street! 5422 2290

Regular business card advertisements (90mm x 55mm) are \$41 inc GST per month - book & pay 11 months and get 10% off.

WOODEND SELF STORAGE



- Store your business documents, stocks or furniture
- 7 day access
- 33 individual sheds
- Affordable prices
- Insurance available

For any enquiries please contact
Leonie or Dennis Barker
on **5427 4175**

Joanne Duncan

STATE MEMBER FOR MACEDON **MP**

Friends,

At the heart of good governance is honesty & accountability, as well as an understanding of the issues confronting the whole of society.

If you have any concerns you wish to raise, please do so.

Feel free to call me on:

5428 2138



Prepare for the upcoming bushfire season

As a community who is all too familiar with the devastating affects of bushfire, it is critical that we all ensure that we are prepared for the upcoming bushfire season.

I urge everyone, especially new residents to attend a Community Fireguard meeting, contact your local CFA and visit www.cfa.vic.gov.au

New rules will allow landowners to clear any vegetation including trees within 10 metres of a house and any vegetation except for trees within 30 metres of a building used for accommodation.

Fence lines can also be cleared for a combined maximum width of 4 metres either side of the property boundary fence.

The Government is committed to increased fuel reduction burns subject to suitable weather conditions. Since July, we have undertaken 30 controlled burns across the state, and will continue to control burn throughout October and November when conditions are suitable.

Regards Joanne Duncan



BUDA

Historic HOME & GARDEN

Home of the noted Gold and Silversmith Ernest Leviny and his family from 1863 to 1981 featuring: authentic furnishings and arts & crafts collection, significant heritage garden and grounds

Open Wed-Sat 12 noon to 5pm & Sunday 10am - 5pm
(by appointment for groups)

42 Hunter Street, Castlemaine 3450 Ph 5472 1032
admin@budacastlemaine.org

KYNETON EQUIPMENT & PARTY HIRE

FOR ALL YOUR HIRING NEEDS
8-12 BEAUCHAMP ST PHONE (03) 5422 2311
KYNETON VIC 3444 FAX (03) 5422 2930
Email: kynhire@bigpond.net.au
website: www.kynetonhire.com.au

Alexander Technique

Reduce, manage or eliminate stress headaches, muscle and joint pain. The Alexander Technique addresses the underlying problems and puts you back into control for yourself.

Margaret McGill has been teaching Alexander Technique for more than 20 years.

Contact Margaret on **5428 6461**

All local groups, clubs and committees are invited to submit articles for publication

WOODEND TAXIS

% 5427 2641

- n Taxi Passengers
- n Verbal Message Delivery
- n Airport & Melbourne Service
- n Also Pickup & Delivery of Letters & Very Small Parcels

Betty Valli
29 Urquhart Street, Woodend

There's no substitute for local knowledge. And we've been locals since, well, forever.

We first opened our doors in Woodend in 1927. Over the years we've come to understand the needs of locals, and have the experience and knowledge to help you with all your financial needs.

- Home loans and investment home loans
- Personal loans
- Credit cards
- Business loans and equipment finance
- Transaction and savings accounts
- Home insurance (including building, contents and personal valuables cover)
- Car insurance
- Superannuation, managed funds and wealth creation
- Life insurance and income protection

Determined to be different

Simply call **03 5427 1777**. Or drop in and see us at 82 High Street. We're right here where we've always been.

commbank.com.au

Commonwealth Bank of Australia ABN 48 123 123 124 CBALA0000 00/00

STAND UP AND HAVE A GO!

Everybody needs to sing. The louder the better. If you're a wannabe Bono, then Rod Laver Arena won't be big enough, but for the rest of us the home front will do.

Singing is a bit subjective though, like art and wine. Sometimes it can be hard to see the beauty in art, the occasional bad drop of red can taste like floor polisher, and singing can sound like a cat devouring a canary.

So where's the line between Bono and the cat? Quite firmly blurred most often, but don't be deterred if you're more cat than canary. The health benefits of singing are many, and include (a) it leaves you with a sense of contentedness (much like chocolate) and (b) you use your lungs in a different way - so that's not to be wheezed at.

Search for a place with concrete floors and a high ceiling, which will either make you sound more Anne Murray than the real thing, or like you're singing into a tin can.

You can be humming away in the kitchen and they'll hear you up the hallway. Unfortunately the same works in reverse so don't get caught belting out "I Am Woman" in the shower, only to find that your family have let in the guests who are now shuffling their feet in the kitchen ... and not humming along.

And singing draws families closer. Look at the Von Trapps. Oh hang on... didn't he run off and marry the maid? No matter. If you don't know a falsetto from a stiletto, give it a go anyway. You lead with "High on her heels was a lonely goat herd" and if the kids plug their iPod's in at the same time, then consider it a sing-along. Good Parenting.

PS: Yes, I know. It's "High on a Hill", but it's a shoe joke.

submitted by Kathy Mexted



LEADING HAND CARPENTRY
COMPLETE CARPENTRY SOLUTIONS

Call 0439 360 896 or email shannon@lhcarpentry.com.au



REGISTERED
Building Practitioner



Chiropractor – Mark Brown

- 20 years in Practice.
- Upstairs at Westpac Bank, 75 High Street
- Muscle realign and stretch techniques
- Gentle spinal adjustments
- Shoulder, elbow, wrist, knee, foot problems
- Headaches, migraines, athsma, neuralgia, digestive problems



Phone 5427 1456 or 0407 526 403

ADVERTISEMENT

Donna Petrovich MP

State Member of Parliament for Northern Victoria Region

Working for the Woodend Community

Your Country Voice

☎ 5782 2011
84 Sydney Street, Kilmore

Authorised by D Petrovich, 84 Sydney Street, Kilmore.



Woodend Neighbourhood Centre

With Spring well under way we are buzzing with activity at the Woodend Neighbourhood Centre.

Coming up in our final term program for the year we still have lots to keep you busy. As well as our many regular fitness, computer and creative classes we are introducing these opportunities: Card making, Bush Fire Awareness, Bush Tucker & Local Plant knowledge, Level 1 Sports Trainer Course, Meditation, Guitar lesson, Jazz appreciation, Numerology, and Digital photography classes

Your tax returns should be lodged by the end of October so if you are on a low income and need help book an appointment with our Tax Help volunteer. He is a volunteer trained by the Australian Tax Office and is only able to help you until 31 October.

Seniors Week is upon us so during the week 5-9 October we have several free activities for people aged 50+. For full details pop in or look on our website.

- Ronda from the Laughter Club is sure to put a smile on your face
- Have a go at juggling – good for keeping your hands active and fun too!
- Get creative with glass fusing under the guidance of Ettore
- Fitness and general health can be improved with Tai Chi, so attend a class for free and see how good you feel afterwards

We are now planning for 2010 so if you would like to become a tutor, or are hoping to try something we don't currently have on offer please let us know.

We are open 5 days a week during school hours. We have Internet access, printing and photocopying services available so pop in and see us soon.

submitted by Sarah Campbell WNC 47 Forest St, Woodend

Put some spring in your step & get fit for Summer!

Reduce the bounce!
Shape up for Summer by wearing the **Anita Extreme Sports bra.**

Firm support to suit all levels of exercise and activity...



bodywise
UNDERWEAR

comfort for women ... everyday

www.bodywise.com.au

1300 66 17 66

Shop 19, 130 High Street, Woodend
(next to new Post Office)

NEW COLOUR!

Place your order now for **Purple Passion**, available soon in everyday bras and briefs.

Paul Groves

Mobile 0414 928 491

Phone 5427 2171

Computer Sales, Repairs & Consulting

Home and Office Networking
Onsite Repairs and Maintenance
New Computer Systems

paul@pcweirdness.com

Music Lessons

Jacky Ogeil (B.Mus, B.Mus.Ed, M.Mus, PhD) is opening a music teaching studio in Woodend for all ages, beginners to University level.

Private lessons available in piano, harpsichord, theory, harmony, figured bass, accompanying sight reading, aural training, exam/recital preparation, performance anxiety, music appreciation, music history and VCE.

Also available as an accompanist.

Taking bookings for 2010. Group theory and aural lessons available for special discount prices.

Contact: jackyogeil@ozemail.com.au

"Music is not an occasional social function – it's a basic necessity to have a civilised life and be a civilised person in a civilised world." Isaac Stern

Macedon Ranges BUSINESS+LIFESTYLE EXPO



THE
Expo

Connecting Local People with Local Business

Promotional displays, product demonstrations, food & wine tastings, health & wellbeing workshops and free kids' activities.

Phone 03 5421 9616 www.macedon-ranges.vic.gov.au

Saturday & Sunday 3-4 October, 10am-4pm

FREE ENTRY

SACRED HEART COLLEGE
High St, Kyneton

Sponsors:



Newham Primary School

Newham Primary School's 3rd Annual Art Exhibition and Sale will be held on Saturday, October 10, from 5 pm in the new school buildings at 1271 Rochford Road, Newham. Fine wine and finger food will be served during the evening and a sausage sizzle in the main grounds. A musical rendition from students will be performed as well as a raffle to be drawn during the evening with tickets available from the school. Prizes include a family portrait sitting, handmade jewellery and more.

The focus for this year's exhibition will be the student's photography, for which they have undertaken weekly classes since February with local photographer, Marnie Tole. A wide variety of subjects will be covered, from still life to portraiture. For the first time we will have guest judges with several prizes being awarded.

Our fundraiser "NAME BRICKS" are available from the school office. These bricks will be a permanent feature of our music room and are a great way to commemorate a special occasion, birthday, a business promotion or as a reminder of past school days. Bricks sell for \$40 each with subsequent bricks being sold at \$30 each. Hurry in for these bricks as building will commence shortly on our music room.

The school's annual market will be held on Saturday, November 14, from 9 am, in the school grounds, with a fantastic range of activities for both adults and children, stalls, great food, an auction and live entertainment. Anyone wishing to hold a stall should contact the school on 5427 0235 during office hours.

submitted by Alice McMahon

9: The Expo Connecting local people

9: The Expo will be held at Sacred Heart College in Kyneton and is the only business-to-consumer exhibition in the Macedon Ranges with the aim to connect local people with local business and promote a 'buy local' message. At last year's Expo in Gisborne, over 40 local businesses exhibited and generated sales and business in excess of \$350,000.

'The 9' is the brand name created by the Macedon Ranges Shire Council to support economic development activities. 'The 9' represents the nine major towns and smaller villages in the Macedon Ranges: Gisborne, Kyneton, Lancefield, Macedon, Malmsbury, Mount Macedon, Riddells Creek, Romsey and Woodend.

"For one big weekend and in one easy to find location, explore the vast range of local products and services available to you: free environmental sustainability home assessments valued at \$250; education; finance and lending; health and wellbeing; community organisations; outdoor equipment and machinery and much, much more. And entry is free".

New features for 2009 include health and wellbeing workshops including gentle yoga stretching and thi chi classes as well as workshops on health, wellbeing and spirituality. Free kids activities provided by Pass the Parcel, including face painting and balloonology.

For further information and bookings, contact the Economic Development Unit on 54219616 or email ecodevadmin@macedon-ranges.vic.gov.au.

This page is proudly sponsored by the 19th HOLE SHOPPING CENTRE



Ian Marks Liquor
5427 3961

Blue Orange Concepts: homeware
5427 4500

Woodend Pizza & Pasta
5427 3777

Coles Supermarket
5427 2377

*Collier Office & Business Assist
and Woodend Copy Centre*
5427 3092

Pets Haven
5427 3603

Mitre-10 Woodend Hardware
5427 2314

BP Woodend
5427 2248

Target Country
5427 4366

Macedon Ranges Travel Services
5427 4777

Kosmac & Clemens: optometrists
5427 4577

Woodend Cycles
5427 2662

Salvation Army Family Store
5427 4421

Loose Change Bargains
5427 4466

Bodywise Underwear
1300 66 17 66

Australia Post
5427 2600

Inner Artist
5427 4455

The Spa Beauty Therapy Centre
5427 3322

HIGH STREET SHOPS

Color Me Cooper: clothing/gifts
5427 1454

Chelleon For Hair
5427 3246

Not Just Fudge
5427 2210

RT Edgar Real Estate
5427 1222

Woodend Bakery Cafe
5427 3434

Upcoming Events & Meetings

October

- 1 Red Cross meeting
- 2 Senior Citizens Annual General Meeting 1.30pm
- 3-4 The 9 Expo
- 4 Daylight Savings starts 2am
- 5-9 Seniors Week
- 7 Futsal Registration 5-7pm
- 8 Hanging Rock Petanque Season Open
- 9 Little Aths season begins
- 10 Newham Primary Art Exhibition
- 11 Childrens Park Planting Day
- 14 National Ride to Work Day
www.bv.com.au
- 14 Woodend Heskett Football Netball Club Annual General Meeting
- 17 Summer Futsal Registration
- 17-18 Woodend Art Group Art Show
- 18 "Singing in the Ranges" Victorian Welsh Choir
- 18 Lion's Village Market
- 20 Soup for the Kids
- 24 "A Great Night Out" Cambodian Kids Foundation Dinner, Mt Macedon
- 24 Tupperware for Life
- 24-31 Koala Survey, Shire Wide
- 25 Woodend Teddy Bear Show, St Ambrose Hall
- 27 Woodend Childrens Park Ribbon Cutting Ceremony
- 31 Woodend Childrens Park Community Celebration

November

- 30-3 Macedon Ranges Art Group Exhibition
- 7 Kyneton Croquet Annivesary
- 7 St Mary's 150th Celebration Fete
- 11 Remembrance Day
- 14 Annual Market Newham Primary
- 29 Athol Guy & friends at Noah's Inn, Tylden
- 29 Hanging Rock Petanque Club Triples

December

- 4 Newham Hall Grand Opening 11.30am
- 5 WOOMBA festival
- 5 Landcare BBQ
- 6 Gisborne Singer preform *Messiah*
- 13 Lion's Club Carols by Candlelight

PLEASE SEND US YOUR FUTURE DATES

COMMUNITY GROUPS CONTACT DETAILS

- Australian Breastfeeding Association,
Heather 5427 2398
- Cobaw Thursday Walking Group 5427 3340
- Daylight Masonic Lodge, 5427 2480
- 1st Woodend Scout Group, 5427 3788
Sarah
- Friends of Macedon Ranges Library,
Chris/Bill 5427 2469
- Garden Club 5422 6062 / 5427 3340
- Living Word Christian Church 5429 6327
- Historical Society, Courthouse, 5427 2523
- Macedon Ranges & District Motor Club,
10 Webb Cres, New Gisborne 1st
Wednesday each month 8pm
- Macedon Ranges Animal Aid, Buffalo
Sports Stadium, 5427 1752
- Macedon Ranges Bridge Club, 5427 4440
- Macedon Ranges Families of Children
with Disabilities Support Group,
5427 3365
- Macedon Ranges Residents Assc. 5427 1481 or 5427 2651
- Macedon Ranges Communicators (ITC),
5427 2669
- Macedon Ranges Photographic Society,
1st Tues of month, Ron Mathews
5427 3284
- Macedon Ranges Social Club (activities
for singles over 35) phone 9740
5517 or 9744 2697
- Probus, 5427 2003
- R.S.L., Anslow Street 5427 3122
- Red Cross, 5427 1260
- Rotary Club of Woodend, meetings
weekly at Vic Hotel Thursdays
6.45pm, Kai 5427 1029
- St. Mary's Guild, 11am, 4th Wednesday
of month
- St. Mary's Street Stall, 9-12 noon
outside Woodend Newsagency (2nd
Sat of the month)
- Woodend Landcare Group,
Jo 5427 1909 or Doug 5427 0666,
3rd Tues Meeting, 4th Sunday
Working Bee
- Woodend Angling Club, RSL Hall, 5427 2395
- Woodend Art Group, Railway Station,
5422 6172 or 5427 1659
- Woodend Business & Tourism
Association, Cori
5427 3434, 2nd Tues of month
(BATA)
- Woodend Lions Club, Meetings
2nd/4th Wednesday each month,
ph Robyn Roberts 5427 1342
- Woodend Model Railway Club, Buffalo
Stadium
- Woodend Pony Club, 5427 2793

**Sand | Soil | Mulch | Pots | Pavers | Plants
Water features | Fire wood | Wine barrels
Hire Equipment | Synthetic turf | Sleepers**

 42 Nursery Road Macedon 3440 Victoria
Email hello@nrgsupplies.com.au
Telephone 03 5426 2400 | Facsimile 03 5426 4972

NURSERY ROAD GARDEN SUPPLIES
General open hours Monday–Friday 7.30–5pm,
Saturday–Sunday 9–5pm. Arrangements outside
these hours can be made.

Woodend Red Cross

The next meeting of the Woodend Red Cross Unit will take place in the SES building at 1:30pm on Thursday, October 1st.

Members are requested to attend if possible as arrangements will be made for the luncheon to be held on Tuesday November 5th 2009 when we will welcome all our friends and supporters.

Submitted by P Wilson & J Podrazil.



WOODEND & DISTRICT PODIATRY

John F. Shapland
Resident Practitioner

Reg. Department Veteran's Affairs

5427 2064
Business and After Hours

1895 Mt. Macedon Rd., Woodend



- Grid connected domestic solar systems
- Stand-alone solar and wind generator power systems
- Farm and residential solar gate openers
- Solar bore, dam and tank pumps
- Garden and landscape lighting
- Telephone/data cabling

Contact: **Ray** Telephone: **5426 2574** Mobile: **0416 085 276**

TITAB T08698 – BCSE P2026

Kirsty Nuttall

MACEDON RANGES PICTURE FRAMING SERVICE

By appointment only
Phone/Fax: 5427 3511
Mobile: 0417 337 857

RSL News

The RSL has lost one of its stalwart members, George Dymond who passed away on the 11th of September. George will be remembered for his contribution in all areas of the Sub Branch, he was our RSM. on ANZAC Day for many years and was still an active member of the committee until his recent illness.

The death of George has reminded me that the committee has met the desire of the membership to renovate the clubrooms, and now it is the turn of those members who voted for renovation 15 months ago to join the committee in 2010 to keep and improve the level of service we are now providing.

In October, Welfare Officer Barry Meldrum will be back after a well deserved holiday and keen to assist those in need. Barry is at the club on Tuesdays 9am to 12 noon.

Private bookings of the club continue at an acceptable rate and are helping our bottom line. For bookings please contact Reg on 0427187836. The club is open on Monday,

Wednesday and Friday from 10am to 12 noon. Bar Hours are daily from 4pm to 6pm. Or as required. We will be holding a Remembrance Day Service on the 11th of November starting at 1030am at the RSL Hall with a reception in the hall afterwards. Everyone is welcome.

Submitted by Eric Read, Secretary

All news items, articles and community news columns must be received by 15th of each month.



Living Word Christian Church

**Meet
EVERY SUNDAY
10am**

**7 Mitchell Court Romsey
&
6PM**

Woodend Community Centre

**FOR MORE
INFORMATION
5429 6327**

livingword@iprimus.com.au

Eating Out, In & Around Woodend



the bentinck
Conferences • Events • Weddings

Its time to start thinking about your Christmas party!
Call now to secure your date!

T: 03 5427 2944 **E:** sales@bentinck.com.au
F: 03 5427 2232 **W:** www.bentinck.com.au



*UNDER NEW
MANAGEMENT*

Open 7 days per week
10-4pm Mon -Friday
9-5pm Sat. & Sun.
- 5427 3466 -
- 0401 548 617 -

Top of the Range
Mt Macedon
Tea Rooms & Gallery

Top of the Range Tearooms and
Gallery is under new
Management, with fresh new
decore and a light lunch menu

Gallery Now Open

Top of the Range
Mt Macedon
Tea Rooms & Gallery

Campaspe Country House

Restaurant Opening Hours
Breakfast - Saturday & Sunday 8am - 10am
Lunch - Saturday & Sunday 12pm - 2pm
Dinner - Thursday, Friday & Saturday 6.30pm - 8pm
Open for groups mid week by prior arrangement

A Sparkling Affair
Saturday 24th October @ 7pm
A night to remember ... dress to impress, then gather a group of
friends together, for an elegant evening of sparkling wine & canapés
@ \$130pp
Call our reservations team for more information or to make a booking

Goldies Lane Woodend Victoria
Telephone: 5427 2273 | Email: reservations@campaspehouse.com.au
Web: www.campaspehouse.com.au

What's hot at RedBeard?

Red Hot Music Feast - Saturday 10 October

Between the Middle - local indie/folk lads
\$10 show; \$40 dinner+show. Bookings: 5424 1002

Three courses; local organic ingredients.
Munch away while the music plays...
Drinks not included - RedBeard is fully licensed.


Follow us on Twitter @RedBeardBakery or visit
www.redbeardbakery.com.au

Where can you get our organic woodfired bread?

Retailers:
Nature's Garden, Woodend Woodend Bakery Cafe
Le Fruit 'n' Vege, Gisborne Kyneton Country Fresh
Slow Living, Kyneton Mt Macedon Trading Post
Viv's Organics (home delivery)

Monthly Farmers' Markets:
Daylesford (1st Saturday) Castlemaine (1st Sunday)
Kyneton (2nd Saturday) Trentham (3rd Saturday)
Lancefield (4th Saturday)

RedBeard Historic Bakery and Cafe:
Old Bakery Lane, Trentham Open Tuesday to Sunday
Winner 2008 Hepburn Tourism Award - Food and Hospitality



Frank & Rose Gorlitz
Open 7 Days
8am till late
breakfast, lunch & dinner

For Bookings
Ph/Fax 5427 4447
Mobile 0488 423 537
"Where Lovers of Food Eat"

Not Just Fudge
126 High Street, Woodend

Home-made Fudge,
Natural Ice Cream, Coffee, Tea, Herbal Tea, Milk &
Thick Shakes, Cakes, Sandwiches,
Freshly Squeezed Fruit & Vegetable Juices

Ph: 5427 2210
Fax: 5427 2880

Eating Out, In & Around Woodend

GISBORNE PEAK WINES



Short Road, Gisborne South

**Wonderful wines &
wood-fired pizzas**

Casual, fun & friendly. All weather venue

Tel 5428 2228

www.gisbornepeakwines.com.au



Noah's Inn Tylden
43 Trentham Road
Tylden 3444
Ph: 03 5424 8119

OPEN 7 DAYS

DINNER FRIDAY AND SATURDAY NIGHTS

Colenso

Cafe Colenso

Fabulous coffee

Breakfast-brunch-lunch

Freshly baked cakes and bread

Fully Licensed & BYO

Now open Wednesday to Sunday 8.30 – 4.30

In the garden behind Macedon Ranges Florist

42 Anslow St, Woodend Phone 5427 2007

Noah's Inn Tylden

Noah's Inn is an exciting new restaurant and wine bar, delightfully renovated in the Art Deco style located in Tylden. Open Thursday - Sunday from 11am to 4pm and Friday nights, 6pm til late for delicious meals made from local produce, cellar door featuring award-winning regional wines, great coffee and friendly country hospitality and charm. Noah's Inn Tylden is also available for private functions, conferences and wedding receptions. Sunday October 25th sees Athol Guy & Friends playing from 1-5pm. Booking are essential. Please call on 5424 8119 to make your booking.

Bistro

Open 7 days lunch & Dinner

Daily Blackboard Specials

Open Fires

Bar

Counter meals daily

Fridays Tradesmans Lunch-\$14 pot & parma

TAB & Sky Channel

Specials

***Tuesday Locals Day** menu \$17.50

with glass house wine, lunch & dinner.

***Pensioner & Seniors** card holder Lunch menu
from \$12.50 Monday to Thursday (Lunch only)

Drive Through Bottle Shop

Open 7 days

Music Sundays

From 2.30pm, ring for information

Bookings 5427 2721

67 High Street, Woodend

www.vicwoodend.com.au

info@vicwoodend.com.au



victoria
HOTEL

WOODEND

Eating Out, In & Around Woodend

* FAB FOOD
 * FUNCTIONS & CATERING
 BY ARRANGEMENT
 Bookings Essential
 BYO wine only
 Light Snacks Mondays
 Free entry for
 Macedon Ranges residents
Tel: 5427 0295
 Large range of Australian Gifts

**Hanging
 Rock
 Café &
 Country
 House**

MV MACEDON VIEWS
 RESTAURANT
built by locals for locals

**Seafood
 Buffet
 1st Thursday
 of Every
 Month**

Present this ad
 to receive one
FREE coffee!

652 Black Forest Drive, Macedon Ph 5426 4033



CHEF'S SELECTION

WEDNESDAY NIGHTS
 DURING OCTOBER

7TH SPANISH 14TH ASIAN
 21ST MOROCCAN 28TH INDIAN

CHOICE OF 2 COURSES

\$28.50

A La Carte also available



Fully Licensed
 Open for Dinner Tuesday-Saturday 6pm
 17 Templeton St
 (Opposite the Catholic Church)
 For Bookings Telephone 5427 4852

Cellar to Glass @ 101

101 Mollison St. Kyneton P: 5422 1355

Breakfast & Lunch: 7 days a week
Dinner: Tuesday and Thursday from 6p.m.

Tues: Locals Night- 2 Courses @ \$25 p.p.
 (includes glass of wine/beer)

Thurs: a la carte- seafood focus

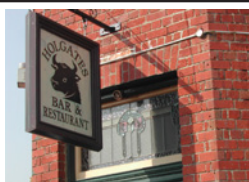
Hosts: Andrea Donaldson & George Murphy

HOLGATE'S BAR & RESTAURANT

Microbrewery Hotel with cosy
 open fires, stained glass windows
 and friendly atmosphere. Award
 winning local beer. Delicious
 meals including house-made bread, pasta and desserts.
 Function room and stylish accommodation now available.

Open for Lunch Tues-Sun. Open for Dinner 7 Days

79 High Street, Woodend
Ph 03 5427 2510



**MOUNT MACEDON
 WINERY**

*enjoy the warmth of the sun on our terrace decking
 with a glass or two of our beautiful estate grown wine*

open Saturday & Sunday 11am-5pm
 433 Bawden (Douglas) Road, Woodend / Mt Macedon
 www.mountmacedonwinery.com.au

5427 2735

Help welcome your future doctors

Please welcome to the community the doctors of the future when they commence in our new teaching program next year.

Brooke St. has always trained medical, nursing and allied health students, but from February 2010 we will provide medical training in ways we have never done before. Fourth year Monash University Medical Students will be with us all year round in order for us to provide quality medical training for our future doctors.

We run the risk of losing doctors

Across Australia, and particularly in rural areas, General Practitioner numbers are declining. The Monash model of intensively training medical students will help us demonstrate the benefits of rural General Practice to our future doctors.

How will the students work at Brooke St.?

Medical students will consult with patients under the supervision of a GP. Patients will first meet with the Medical Student who will take a history. The GP will then join the patient and the Medical Student to assess the problem and determine diagnosis and treatment.

Do I have to see the medical student?

Not at all. It is your choice entirely. When you book for an appointment and ask for the doctor of your choice, you could be offered an appointment with the Medical Student if your doctor is supervising at that particular day and time. Should you not wish to be seen by a student as well, you will be offered another appointment.

Travel



Brooke St. can help with **travel health advice and travel vaccines**. We are also an accredited Yellow Fever vaccination centre.

Reduce your risk and book a GP appointment at least 6-8 weeks before you travel.

Alison's changing role



Dr. Alison Killoh will cease seeing patients after 31 December 2009. She will continue to have a keen interest in the developments at Brooke St. and will participate in teaching medical students in 2010.

To Alison, our esteemed colleague □thank you for everything you□ve given to us over the years. It□s been our privilege to have you as our doctor and we look forward to your contributions to the education of the doctors of the future.

*Full story in our Winter newsletter □
drop in & pick up a copy.*

Brooke St. new building

Number 12 Brooke St. will soon be redeveloped to add to our facilities at Brooke St. Medical Centre. We are simply out of room and in order to accommodate our new students and provide them with consulting rooms and a state of the art study space, our building needs to grow.

Building plans have been approved and construction will commence next door in the very near future. Given that the new development is on a separate site we expect no disruption to patient services.

Whooping Cough

Babies are at high risk for this potentially fatal illness. Adults as well as children need to be immunised. Protect yourself and avoid passing it on □call for an appointment.

Brooke St. Medical Centre □tel. (03) 5427 1002 (after hours 1300 557 512)

This is a paid advertisement

CASTLEMAINE—GISBORNE

CLEANING SERVICE

CHRISTINE ADAMS, FRYERS ROAD, ELPHINSTONE 3448

Carpet Cleaning Specialists

Duct Cleaning, Window Cleaning, etc.

For all your cleaning requirements

- no job too big or too small -
- obligation-free quotes

Tel: 5473 3307 Fax: 5473 3310

Mobile: 0419 006 591

MACEDON RANGES SELF STORAGE

- * 7 day access
- * Individual units
- * Affordable prices
- * Insurance available
- * Now Fully Alarmed

Store your:
* Cars
* Boats
* Business documents
* Furniture etc.

Lot 3, Hoyle Court, Kyneton 5422 1898
(Off Beauchamp St) 5422 3488

Help us help you! Please EMAIL your ads and articles PRIOR to the 15th of the month to sales@collieroffice.com.au

Want all the benefits of Gas? Trust a local!



Elgas is a local business, run by local people offering LPG for:

Your Home

- Heating
- Hot Water
- Cooking
- Swap n Go

Your Business

- Forklift
- Commercial
- Industrial

Safe, reliable tanker deliveries also available!



Woodend Produce
31 Brooke Street
Woodend VIC 3442

5427 2753

131 161

ELGAS

Woodend Little Athletics Centre

The Track & Field season will commence Friday 9 October at the Racecourse Reserve in Forest Street, Woodend (next to Buffalo Stadium). Registration fee is \$75 and if registering for the first time proof of age must be shown. Registrations commence at 4.30 pm. The programme starts at 4.45pm and finishes at approx. 7 pm. The registration fee included the use of a Centre shirt for the season. Please remember to bring a hat and a water bottle. Please wear shoes suitable for running and jumping. The 9 October is also a "Come & Try Night" for those that want to find out what athletics is all about. Should you require further information please phone Colleen on 5427 3224.

submitted by Colleen Dwyer-Gray, Secretary, Woodend Little Athletics Centre



FAIRHURST CONVEYANCING

and Secretarial Services

For all your

Property Transfers

Ring Sue Fairhurst on

Licensee:

A. (Sue) Fairhurst

Licence No.:

000316L

5427 2382

27 Urquhart Street, Woodend

MVCA & AIC

All news items, articles and community news columns must be received by 15th of each month.

WOODEND COMPUTER SERVICE

Sales - Service - Training & Help

THE BANK - OFFICE 3 - 75 HIGH ST WOODEND
JASON JOHNSON - 0400528129

pcs@live.com.au



Magnetic Websites

Martin Beaumont

PHONE 03 5427 4478

MOBILE 0414 274 988

HTTP www.magneticwebsites.com.au

EMAIL martin@magneticwebsites.com.au

Developing websites for the Macedon Ranges and beyond, ask how we can help you get online

News From Woodend Landcare

There are a few important items to tell you about, the most immediate being the Planting Days for September and October. First up is the one on Sunday September 27. The next one is on Sunday October 11 which will be in conjunction with the Woodend Children's Park. Location for this is at the end of Pyke St, on the south bank of the Creek. The others are two weekday plantings with the students from Woodend Primary and St Ambrose Schools. They will be on October 21 and 28. A couple of extra volunteers to help the kids would be greatly appreciated. Both these are quite short, only a couple of hours time required. If you can help on any or all of these days, please call Jo Clancy on 5427 1909

Thanks to the Federal Government's special grants to local Councils, our Shire is now carrying out works to make the rough path through our October 2007 plantings into a walking track. The work includes putting culverts across several drains, allowing safe walking, as well as access for maintenance vehicles if necessary.

As Spring advances, it's getting near time for the wildflowers to put on their show. Keep an eye out if you're walking along Quarry Rd rail and rail reserve, or Plants Lane, or Bawden Rd. There will be many little beauties to be seen over the next few weeks, but you may miss them if you're not observant enough.

Of course we are all very much aware of fire risk. Among the matters everyone will be planning for and dealing with, don't forget that the brushy, woody weeds like gorse, broom and blackberry are among the worst fire hazards in our area, where there are many smaller blocks. Getting rid of these early on is a good start to your fire protection plan.

Don't forget our new name! We're WOODEND LANDCARE now, and we're part of the town and the community

Submitted by Jo Clancy

Trentham Spring Festival

In support of the CFA and Trentham Lions Club, Trentham Spring Festival features live music, wine tastings, regional produce, plants, displays from local artists, massage, local beers and fabulous food with fun for the kids including rides and face painting. Held on the grounds of beautiful Feldspa, the festival will be sure to delight you Mind, Body & Soul, so head to 11 Falls Rd Trentham, from 9.30 till 4pm. on Sunday 4th of October
Entrance is just \$10 with pensioners and children free

EpiGenetics

1300 737 146

Ultra-longevity & Success

- Quit Cigarettes (In 60 Min) & Addictions
- Lose Weight for Life – Manage Pain & Trauma
- Address Anxiety – Phobias – Behaviour Problems
- Achieve Wellness – Energy & Focus

CHILDREN ESPECIALLY WELCOME

Introduction Massage \$45

FM RURAL CONSULTING

- Accounts to trial balance
- BAS/IAS Preparation
- Payroll
- Debtor/Creditor management
- Cashflows
- Monthly Reporting
- Farm Gross Margins
- MYOB, Quickbooks, Banklink & more

Fran McLaughlin

0427 825 989

fmrural@bigpond.com

Rural and Regional business is OUR focus

Meta Massage

SPORTS/REMEDIAL MASSAGE, SHIATSU, REIKI

Raymond White

Telephone 0411 268 336

for an appointment

18 years experience • Chronic and acute conditions

Sports injuries • Rehab work

\$45 special for tradies, runners & bike riders

Woodend Auxiliary of Kyneton District Health Service.

Our September "Welcome to Spring" Champagne and Basket Luncheon was a great success, with lots of fun and prizes, and a total raised of more than \$450.00. Many thanks to those who supported this event!

At our Annual General Meeting the following week the elections for Office-bearers resulted in no new nominations so the executive was reelected. Marjorie Wilton, President, Aileen Barker Treasurer, and Jo Clancy Secretary have agreed to serve another term, but some new faces would be most welcome, as it comes near time for us to retire! Watch out for our Christmas Hamper Raffle in December. We'll be selling tickets at Coles on Thursdays and Fridays.

Our next meeting in November will be a Christmas lunch at Marjorie's.

Submitted by Jo Clancy



Kerri Hendriks

House cleaning

Looking for permanent work

Weekdays from 9am – 5pm

\$20 per hour

Minimum 3 hours cleaning

Please note no equipment or

cleaning products supplied

Call Kerri 0403 685 060



Woodend Fire Awareness Meetings

The CFA is about to commence its largest ever community bushfire awareness program, and the Woodend CFA will be organising a series of Fire Safety and Community Awareness displays and meetings over the forthcoming months as we build up to what is reported to be a fire season even more dangerous than last season.

Region 14 Manager Community Safety David Allen said the aim was to reach residents in the high-risk areas and ensure they had ample information from which to make an informed decision in the event of a bush or grassfire. "We want to get to as many people as possible in the bushfire prone areas. The aim of these meetings and community appearances is to inform people of the dangers of bushfires and what they need to do on a high fire risk day.

"I would encourage, at the very least, that residents attend a community meeting in their local area; these meetings are a great opportunity to obtain an overview of current and projected on-ground conditions along with key information on bushfire preparation and survival," he said.

If you have any questions or require information or advice please come and see us at the below sessions:

Woodend Market - Sunday September 20

Woodend Market - Sunday October 18

Teddy Bear Show - Sunday October 25

Woodend Market - Sunday November 15

Community Meeting at Woodend Fire Station - Sunday November 22

Community Meeting at Woodend Fire Station - Monday November 30

Woomba Community Festival - Saturday December 5

Community Meeting at Woodend Fire Station - Tuesday December 8

There is a great deal of valuable and new information that has been developed since the terrible fires earlier this year, and we will make sure that the key points are outlined in future issues of the Woodend Star as the official guidelines are issued to us.

Thank You So Much To Our Very Generous Community

In July we sent out a fund raising letter to the Woodend Community and the response has been outstanding. So far, you have donated in excess of \$20,000, which will be well used as outlined below.

There have been some very generous individual donations of several thousand dollars, however these are

just as significant as the several dollars donated from a youngster's pocket money.

We are also maintaining several other fund raising activities over the coming months – and in each case you have the chance to get something fantastic back in return.

Thank you so much to everyone who made a valuable contribution to the safety of our community with your donations, and for your ongoing support.

The Funds Will Be Well Used

The Woodend CFA operates a fleet of vehicles to service our community, but not all of them are fully-funded by the CFA. In fact, three of our vehicles are actually purchased using funds raised by the brigade itself.

Our next major project is the replacement of Tanker 2 in the near future. The current tanker has served us well, but the time has come for an upgrade to ensure we can maintain the best fleet possible. The cost of a replacement will be around \$300,000, and the brigade will have to raise the major contribution towards this total. Hence the importance of donations such as those above, and fund-raising activities such as the raffle below.

Don't miss your chance to win a holiday to beautiful New Caledonia – Entries Close October 31

Tickets are still available in our fund-raising raffle, with the prize being an \$8,000 holiday for two to New Caledonia and funds supporting all CFA brigades in the Mt Macedon region. All of these brigades are open every Sunday morning, so make sure you call in and buy a few tickets. Why not get a book of 25 tickets and sell some to your friends – remember all proceeds support your local CFA.

Entries close October 31, 2009 and tickets are selling fast ... so don't miss out. Tickets will be available at all of the above Community Meetings prior to the draw. Or you can find out how to get a ticket by visiting the Woodend CFA website: www.woodendcfa.org where you can send an email from the website to request a ticket or email: m.dornau@dornau.com.au to order tickets.

For further information contact Captain Mick Christie on 0419 870 601 or 1st Lieutenant Mike Dornau on 0409 093 935, call the Woodend CFA on 5427 2356, visit the station in Urquhart Street or our website: www.woodendcfa.org.

The Woodend CFA is a volunteer emergency service, committed to Creating a Safer Community.

Submitted by 1st Lieutenant Mike Dornau, Woodend CFA

BGE

Joinery Quality you deserve

• Kitchens • Shop fittings • Bars

BRAD ELSE

Mob: 0412 355 548 Ph: 5422 2571

Factory 2/27 Redesdale Rd., Kyneton

Visit our Showroom 166B Mollison St, Kyneton

11am – 5pm Fridays or by appointment



Accountants, Advisors & Planners

Office Locations:

111 High Street, Woodend Ph: 03 5427 8000

2/19 Bourke Street, Kilmore Ph: 03 5782 1273

email: admin@riverwoodgroup.com.au

website: www.riverwoodgroup.com.au

**RIVERWOOD
GROUP**

Riverwood Group can offer a *Total Financial Solutions* package for you and your family. Take a look at some of the services we provide:

Taxation

All your taxation requirements to suit individuals and small businesses.

Investments to Create & Protect your Wealth

Managed Funds, Indexed Funds, margin Lending and more

Planning for Retirement

Allocated Pensions, Centrelink Benefits and Payments

Stockbroking

Recommended lists, broking facility available, share updates

Superannuation & Rollovers

Advice, placements, Self-Managed Super Funds and Eligible Termination Payment Advice

Other Services

Home & Investment Loans, Business Loans and Leasing, Income Protection, Life Insurance, Professional Indemnity, Estate Planning and more.

Woodend Lions

Although the winter has been cold and damp the Woodend Lions have been busy. They have: -Provided lunch for the Scotch College Orchestra during the Woodend Winter Arts Festival, held a fund raising BBQ, organised firewood deliveries and garden maintenance for community members, catered for the Lions District Governors meeting collected and dispatched 850 pairs of glasses for the Lions Recycle for Sight appeal, given 30 trauma Teddy Bears to the Woodend and Gisborne branches of Ambulance Victoria, assisted with Daffodil day fundraising, provided funds to a variety of organizations including the bushfire appeal, the CFA and Scouts, welcomed three new members to the club and made 4 large knitted rugs to be given to people in fire affected areas.

Currently the club is: - liaising with local schools for the annual Lions International Peace Poster project, planning Woodend's annual FREE carols by Candlelight to be held on Sunday 13th December, Planning the annual Art Show, which will be held in March 2010

The Woodend Lions Village Market begins again in September. Market dates are Sept 20, Oct 18, Nov 15, Dec 20, Jan 17, Feb 21, Mar 21, Apr 18, May 16.

Market enquiries and bookings: Ailsa Howe 5427 2321
For all other enquiries, including membership details, please phone one of the following:

President: Liz Johnson 5427 1503 Secretary: Robyn Robbins 5427 1342 Treasurer: Terry Bowles 5427 0505 Or write to: Woodend Lions, P O Box 25, Woodend 3442.

You are invited to the 4th
**Woodend Teddy
Bear Show**
Sunday, October 25th

10am - 4pm



St Ambrose Hall
Templeton Street, Woodend

* Stalls * Refreshments * Raffles *

A beary family friendly event!

*Featuring a teddy bear making competition
for professionals and amateurs.*

· W · O · O · D · E · N · D ·

SIMPLY HEALTH

NEW ANIMAL PRODUCTS!
For Dogs, Cats & Horses

COUNTRY PARK - Herbs & Natural
Supplements

ORGANIX - Dog & Cat Food

P.A.W. - SLS Free Dog Products

MINROSA - Himalayan Salt Licks

NATURE'S GIFT - Natural Pet Treats

CHAKRA PARK - Natural Healing
Creams

BOOKS - Natural Health Care for
Animals

Shop 35A Anslow St, Woodend

PH: 03 5427 4237

**FOR ALL YOUR REAL
ESTATE NEEDS**

Denis O'Meara Dip.Ag.Sc
Sales Consultant

Raine & Horne Woodend
Shop 3a. 81 High Street
Woodend. Vic 3442
Telephone 03 5427 3200
Mobile 0428 554 102
Fax 03 5427 3022
Email rhwoodend@bigpond.com



Raine & Horne

rh.com.au
we'll look after you®

Woodend RSL Womens Auxiliary

The dinner and karaoke nights at our RSL are still proving to be very popular with the next night to be held on Friday 2nd October. So, if you are looking for a good night out with a great meal and lots of fun please get your bookings in early bring a friend and have a good time. Bookings can be made by phoning Betty 5427 2225 or Margaret 5427 1226.

Our visit from the Castlemaine Auxiliary for lunch last month was a lovely day. The Auxiliary were asked to visit Castlemaine for a return visit on 24th September. We went by bus and Reg once again was our driver.

We were all saddened to hear of the passing of long time RSL member George Dymond. He will be very much missed and our thoughts go out to his family.

Two of our own girls Barbara S and Barbara G are at present in hospital. Barbara S has had a very serious operation and Barbara G had a very bad fall at the Kyneton Daffodil Festival. Our Auxiliary has sent flowers and good wishes to them both. Get well soon girls, we miss you.

Milda has organised a Fashion Parade with a difference to be held on 10th October. "Historical and Hysterical" will feature local models and well known actors Alan Stone and Maggie Mottram and there will be plenty of other surprises as well. So, please don't miss this night it will be a hoot. Supper will be supplied by the Auxiliary after the show. Contact Milda for early tickets, you may remember the annual RSL revue that Milda also ran at the RSL, well this parade will be even funnier so come along and have a good laugh. Tickets \$15.

The RSL also has several birthday parties booked for September and October so if you are planning a party and looking for a venue please get in touch with the RSL our newly refurbished hall and kitchen and reasonable hall hire are available.

Submitted by Betty J Barned – Secretary Auxiliary.

The fencin' fella

- colorbond
- tubular
- timber
- steel picket
- pool

Mini Earthmoving Kanga Loaders

Attachments include:
rotary hoe, soil leveling bar,
4 in 1 bucket, trenchers,
post hole diggers, tipper

SHAUN BARRON

MOB: 0407 232 900 or 5422 3488 AH

ZUMSTEIN



**DESIGNER AND MAKER OF FINE
FURNITURE AND JOINERY**

"Third generation woodwork really shows"



Zumstein Pty Ltd
Factory 1/32 Brooke Street
WOODEND VIC 3442
Ph 03 5427 4579
Fax 03 5427 2284
Mobile 0412 138 364

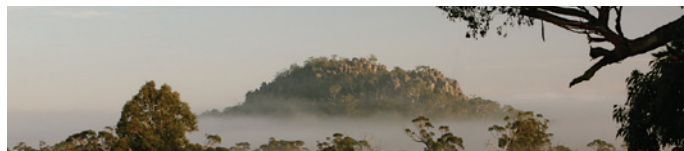
Woodend Senior Citizens

On the 2nd of October we are holding the Annual meeting at 1:30pm in the home of Seniors, Woodend Community Centre. There will not be cards on this afternoon, but carpet bowls will still be happening – all ages welcome, its great fun.

On any normal week on a Friday we have carpet bowls in the morning and cards in the afternoon starting at 1:30pm. On a Tuesday we hold Bingo at 1:30pm. All seniors are welcome to all our activities.

On Friday 16th October, we are holding a Fashion Parade as well as afternoon tea for all the ladies from 1:30pm.

Submitted by Norma Richardson



24sevenalarms.com.au

24 Seven Alarms Aust Pty Ltd

- Alarms installed, Serviced and Monitored
- Data cabling and phone line installation
- Medical Alert Systems
- Access Control Systems PSBL: 732-083-90s
- Digital Video Surveillance CCTV packages: domestic and commercial

1800 247 111/ 03 5427 4411
sales@24sevenalarms.com.au

TERRY'S GROUND CREW

0400 909 303

ENJOY YOUR PRECIOUS WEEKENDS

**MACEDON RANGES
VOUCHERS ACCEPTED**

**GET READY FOR
SPRING AND SUMMER**

**pensioner
discounts
available**

Building Environment

Architectural Design and Landscape

Stanley Ziolkowski

Registered Practitioner

0439 988 277



- house plans
- documentation
- aesthetic design
- building approvals
- landscape design
- town planning submissions
- building renovations & extensions

WOODEND

Proud to be Pokie-free

RHONDA HILL

Paediatric Speech Pathology Service

0419 323 095

and

FIONA LE NEPVEU

Paediatric Occupational Therapy

Service

0414 891 107

are moving to

81g High St Woodend

Office Space is available for
Allied Health/Educational
service providers.

Please call Rhonda Hill
For further information
on 5427 3309

ADVANCED EQUINE DENTISTRY

Winner 2009 Macedon Ranges Business
Excellence Awards for Young Business Person &
Professional Services categories

Dr Shannon Lee BVSc

0418 598 621

**we
come to
YOU!**

Mobile services for Macedon Ranges

www.advancedequinedentistry.com.au

St. Mary's 150th Anniversary Celebrations Fete

On Saturday 7th November from 10 am, the lovely grounds at St. Mary's in High Street Woodend (next to Woodend Primary School) will once again be buzzing with a multitude of stalls, music and food.

You can feast from a selection of barbecues, cakes and scones; buy preserves and handmade crafts and pre-loved goods; browse through second hand books, bid for a selection of locally donated auction goods and take part in a variety of games and activities.

Why not spend some time and relax after you've browsed and shopped for Christmas gifts by sipping on some wine, or enjoying a Devonshire tea and listen to music by our talented local musicians.

Don't forget to buy a ticket in our annual major raffle, the first prize being an overnight cruise on the Paddlesteamer 'Emmylou' in Echuca. They'll be on sale at the Guild's monthly stall out front of the Newsagent.

If you wish to set up a stall on the day, call or email Sylvia Mathews on 5427 1885, nma00780@bigpond.net.au

submitted by Sylvia Mathews

CHINKA STEEL CONVEYANCING (HEP Steel, Solicitor)

**FOR ALL YOUR
PROPERTY SALES AND PURCHASES**

RING CHINKA ON

03 5427 2477

74 HIGH STREET WOODEND 3442



Macedon Ranges Equine Vets

- **Full equine services including x-rays, ultrasound and endoscopy**
- **Foaling down**
- **Microchipping**
- **Dentistry**
- **Lameness**

0400 449 990 03 5428 1888

Cancer Support

The Cancer and Natural Therapy Foundation, established in 1993, is a non-profit, registered charity organisation. Its aim is to self empower people through active participation by assisting them in acquiring knowledge and understanding of a wide range of natural therapies so as to enable them to make 'informed choices.' The Foundation endorses an integrative approach to health where both natural therapies and conventional treatments are equally respected according to individuals' choices.

The Cancer and Natural Therapy Foundation provides the following services and resources: information and referral, resource library, professional counselling and support, guest speaker program, support groups, reiki healing, ifas treatment, quarterly newsletter, self help workshops and educational film program.

The foundation holds the following weekly support groups: Health Awareness Support Group on Tuesdays 7.30pm-9.30pm and Self Empowerment and Healing Support Group on Thursdays 10.00am – 11.30am.

Film Nights and Workshops

Film Discussion Night – 'What the Bleep do you know?'. Explores the links between quantum mechanics, neuro-biology, human consciousness and day to day reality. On Tuesday 27 Oct at 7.30pm. Cost \$12.

Workshops

– Reiki I Workshop, facilitated by Gary McKenzie. For those interested in learning the healing art of Reiki. On Sunday 8 November from 1pm to 6.30pm. Cost \$75 or \$65 for students and pensioners. (Includes handouts and refreshments)

All Support Groups, Courses and Seminars are conducted at the Neighbourhood and Community House, Elizabeth Drive, Sunbury.

Joan P Jane

PSYCHOLOGIST

0403 046 048

03 5426 4165

Anxiety • Depression • Stress • Low Self-Esteem
Relationship Difficulties • Career Confusion
Inconsistent Sport Performance

The Bank
75 High St.
Woodend 3442

Bulk Billing
(Medicare - DVA - GP Referral)
Provider Number 2827013A

WARNER'S JEWELLERS

EST. 1912 ~ 4th Generation Jewellers

97 High Street, Woodend 3442

Tel: 5427 1573

**Manufacturing Jewellers and
Diamond Ring Makers**

Stocking: Portmeirion, Whitehall,
Queens, Pimpernel, Royal Doulton,
Cherished Teddies, Royal Sengalor.

AGRICULTURAL CONTRACTOR



PHILIP BEATTIE PTY LTD

Located in the Macedon Ranges and servicing a wide surrounding area, Philip Beattie Pty Ltd can provide you with the latest equipment and operators for you to produce the best in

- CROPPING
- SPREADING/FERTILISING
- PASTURE RENOVATIONS
- ZERO TILL RENOVATIONS

Now with the added feature of an Outback GPS Guidance System to enable full and accurate mapping of your paddocks

At Philip Beattie Pty Ltd we can also provide you with all your hay making requirements supplying

- Mowing
- Raking
- Teddering
- Large Square Bales
- Round Bales
- Small Square Bales
- Silage Wrapping

Contact:

Philip Beattie Pty Ltd
45 Millers Lane
Newham Vic 3442

Ph/Fax (03) 5427 0702 Mobile 0419 573 226
psbeattie@bigpond.com

News From Newham

The first place to start is the Hall. It has certainly been slow as everyone knows and this has been due to some problems which are being sorted out at the time of writing. If you want to know what is happening contact Nick Massie at the Shire as he is the Project Manager on their behalf. I would point out to people that Ian Miller is not the builder, he goes down regularly to keep an eye on the works on behalf of the committee. Enquiries about bookings can be made to Fran Spain 5427 0661 or Val Sutton 5427 0387

Community Planning continues to be very busy. There has been a meeting with Shire personnel and the committee continues to work on the streetscape, roadside signage and the traffic island. Other projects are: information board for Wesley Park, a barbeque in Wesley Park, street trees and paths. If you want to be involved ring Hilary Roberts on 5427 0795

The school still needs people to buy a brick for \$40 with your message/name on it to help build a new music room. Forms are at the General Store or the School.

School Art Show is on 10th October and the Annual Market is on 14th November, bookings for stalls through the school on 54 270 235. There will be a Fire Awareness Meeting with sausage sizzle at the CFA in November, date to be announced

Birds of the Macedon Ranges are to the fore in October - Friday 16th Oct at Newham School at 7:30pm followed

**WOODEND
NURSERY &
GARDEN SUPPLIES
OPEN 7 DAYS**

"LOCAL KNOWLEDGE FOR LOCAL CONDITIONS"
36 URQUHART ST, WOODEND
Tel: 5427 1866 Mobile: 0428 271 866

Full range of garden & landscape needs
Rock, Soil, Sands, Sleepers
Bobcat hire

By supper - talk by Bruce Donaldson, Saturday 16th Bird Walk of the Rock contact Marie 5427 0258 - limited numbers.

Landcare always has a full agenda of things where you can meet and greet. Fran Spain will have conducted a natural basketry workshop and Landcare will be preparing their exhibit at the Lancefield Show on Sat 18th Oct.

On Oct 31st there will be a members planting at the Harris property 108 Wisemans Lane, Newham. Start is 9.30 am and finish will be lunch around 12.30 provided by your host Toni Harris BYO gloves and water bottle. RSVP to Toni for catering 5427 1242.

A Wildflower and Flora walk at Hanging Rock is on November 8th, meet at the cafe 10 am.

Are you interested in a Horse property specific whole farm planning course? Penny Roberts is calling for expressions of interest and can be contacted on 5427 0795 and if you are moving grapevine material there are regulations in place, contact DPI 136 186

The wonderful end-of-year Landcare BBQ complete with sack races, egg throwing and gumboot tossing will be at Wesley Park on Saturday 5th December from 5pm until dark. Everyone brings a plate for the shared table and their own drinks, more details later

The General Store is now open 4 days a week or by special arrangement as follows: Thursday & Friday 7.30am to 6.30pm Saturday 8 am to 4 pm Sunday 9 am to 4 pm

And last but not least. lock up your sheds and houses and be vigilant of your property and your neighbours as well. The burglars have arrived in Newham so take care.

Thankyou to Penny & Hilary Roberts who provide me with all the information for this little jotting.

Submitted by Sally Stabback



**FIREBIRD MOTOR REPAIRS
CAR WASH**

**31 URQUHART STREET
WOODEND 3442**

OPEN 7 DAYS
Phone:(03) 5427 2255

Pamela Kell

Remedial Massage Therapist, Level 1 Pilates Instructor
SSNT/AAMT, Workcover accredited
Relaxation, Sports, Remedial Massage
Manual and Lymphatic Drainage
By Appointment
22 Goode Street, Gisborne
5428 1000 0408 093 098

GARAGE DOORS

**ELECTRIC GATES • SOLAR GATES
SELF OPENING GLASS DOORS**

Ken Ross
0427 661 543 5422 7507

Central Highlands Doors & Gates
Serving Kyneton & Woodend

**All news items, articles and community
news columns must be received by 15th
of each month.**



T.J. SCOTT & SON
F u n e r a l D i r e c t o r s

- Serving the Macedon Ranges for almost 70 years
- Available 7 days a week, 24 hours a day
- Specializing in Pre-paid funerals

For further information, call the Scott family:
John, Kelly, Jack, Paul & Daniel.

5 Piper Street Kyneton 54226455	46 Aitken Street Gisborne 54284155
---------------------------------------	--

www.tjscottandson.com.au
info@tjscottandson.com.au

"Magnificent" Art MAD Gallery & Café

19 High Street, Lancefield
Tel: 5429 1432

Web: www.madgallery.com.au

Open everyday 10am – 5pm

We're proud of our coffee and promise you
the best coffee around, or your money back!

Sing Messiah this Christmas

Would you like to sing in a performance of every chorister's favourite work? The Gisborne Singers are about to embark on rehearsals for Handel's *Messiah* in preparation for a performance in December and would like to invite any local singers to join them. The Gisborne Singers is a local community choir, which was formed by Barry Firth in 1986. Earlier this month they performed Bruckner's *Te Deum*.

Handel's *Messiah* is probably the world's most performed and popular musical event. An oratorio with settings for soloists and chorus of biblical texts from the Old and the New Testaments, it was written in 1741 in Handel's house at 25 Brook Street London, and was completed, incredibly, in the space of about three weeks. The texts were selected by Charles Jennens, a literary scholar and an editor of the plays of Shakespeare. They constitute a summary of the essential elements of the Christian tradition, including prophecies of the coming of the Messiah through to the Nativity, the Crucifixion, the Resurrection and Ascension of Jesus.

The performance will be held at St Ambrose Catholic Church, Woodend, on 6th December 2009 at 3pm. The Soloists and Singers will be accompanied by a small orchestra of oboes, bassoon, trumpets, strings and organ. This is truly a masterpiece with wide appeal and I urge anyone who has ever cherished a wish to be involved in a production to join us. We again anticipate a 'full house' at St Ambrose similar to the ones we have attracted for every one of our presentations for over two years. At its previous performance of *Messiah* in 2007 the venue was filled to overflowing and many people stood for the whole performance.

Messiah has universally become one of the favourite works in the choral repertoire, beloved by both choirs and audiences. It is so well known that it has developed its own traditions, the most famous being that the entire audience stands for the Hallelujah Chorus, following the example of King George III nearly 250 years ago.

Performing with the Gisborne Singers gives choristers the opportunity to work with a professional orchestra and soloists. Singers of all ages and standards are welcome to join us and there are plenty of friendly, seasoned choristers ready to help newcomers. The choir rehearses every Tuesday evening at Holy Cross Primary School, New Gisborne. Any interested singers should contact the Musical Director, Stephen Brockman on 9380 1444, 0414 289 444 or email brockman444@iprimus.com.au.

Bradley's

Curtains + Blinds

New showroom now open
Mon to Fri 9 - 5.30 + Sat 10 - 1



t 5427 2361 fx 5427 1019 72 High Street, Woodend VIC 3442

www.bradleyscurtains.com

SOLAR DIRECT

- Solar Hot Water
- Grid Interactive Solar Systems
- Stand Alone Power Systems

Ph: 1300 55 77 98

Mobile: 0411 269 489

Lancefield

Woodend Visitor Information Centre

High Street Woodend

Ph 1800 244 711

Your Memories to DVD

- * 8 mm/16 mm Films
- * Mini DV
- * Compact VHS
- * VHS

Discount for Quantity



Top Hat Productions

Ph: 5422 3930

Free CPR Training

The Australian Training Corporation is offering free CPR Training.

Learn how to respond in a medical emergency and save a life. Feel confident to help your family and friends. Be prepared for the upcoming bushfire season. Get a nationally recognized qualification for work. Courses run on Wednesday 28th October between 6:30pm – 9:30pm and Thursday 29th of October 9:30am – 12:30am at Woodend Library. The course is free so please register by calling us on 1300 884 190 as this course is sure to fill fast. Supported by Macedon Ranges Shire Council



Trampolines

ORDER NOW FOR CHRISTMAS!

12FT = \$395
Well Below Retail
SAVE \$\$\$
14FT = \$445
*Prices subject to change without notice

New tougher padding
New 2010 MODEL!

Includes **SAFETY NET - PADS - LADDER**
Free Pickup from Woodend
\$20 Delivery on-site installation available
Macedon Ranges

For Inspection and Enquiries: Jason Johnson Ph: 0400528129
just trampolines@hotmail.com



Lachlan Fleming

CARPENTRY

REGISTERED BUILDING PRACTITIONER

0401 499 898

EXTENSIONS RENOVATIONS ALTERATIONS

All news items, articles and community news columns must be received by 15th of each month.

Peter Baker
& Associates
Barristers & Solicitors

Family Law
Criminal Law
Crimes Compensation

NOW TAKING APPOINTMENTS
IN WOODEND

Peter Baker
BSC & LLB (Monash)

Juliana Smith
BN GDLP & LLB (UNE)

Ph: 5441 7300
Fax: 5442 4232

27 Urquhart St. Woodend
Level 1, 21 View Pt. Bendigo
info@peterbakerlaw.com.au

FIRST INTERVIEW FREE

Tupperware for Life

The first weekend of March is the Victorian Cancer Councils Lancefield Relay for Life, a charity fundraising sporting event where approx 30 teams walk around the Lancefield sporting oval in support and recognition of those we have lost, who have survived or are currently fighting cancer. Whilst this event may be just one weekend of the year, teams throughout the year come up with ways to raise money. On Saturday October 24th from 10am at the Gisborne Sporting Club rooms (above the gym) a team is hosting a Tupperware party with all profit going to the Cancer Council with the option to also donate some of the profit to the Gisborne Cricket Club. If you would like to place an order and can't make it on the day please feel free to call Liz on 5428 8875 or Kylie on 5427 4031.

Submitted by Liz Fleming

Calling past students of Braemar College

Do you know any Braemar College past students? The College has a reunion program in place for its Old Collegians (past students) and encourages these students to update their contact details so they may be involved in these activities. This year, reunions are planned for the classes of 1989, 1999 and 2008 (past staff are also welcome to attend these functions). Class of 2008 1 Year Reunion Friday 16 October, Class of 1999 10 Year Reunion, Saturday 31 October, Class of 1989 20 Year Reunion Saturday 14 November To update your details contact the Community Relations Coordinator via email: paststudents@braemar.vic.edu.au or by telephone: 5427 2500. Information regarding the Braemar Old Collegians and the reunion program can also be obtained via the College's website: www.braemar.vic.edu.au

Submitted by Jennifer Baldwin



CONTINUING VETERINARY EXCELLENCE

Our commitment to you is to provide the highest quality veterinary services in medicine, surgery, health and wellbeing and preventative healthcare in a friendly, personalised & caring environment.

We care for all companion animals, equine, alpacas & livestock.

ANIMAL MANIPULATION
24 Hour Emergency Care
5427 4344
12 Anslow Street Woodend

Heritage Society News

This is not the first time I have written about Woodend's Avenue of Honour in this column, but given the likelihood of a large development in its vicinity, here is some information that needs to be generally known. To begin with, the Avenue of Honour is on the Victorian Heritage Register. To quote directly from the official record:

Extent of Registration:

- 1 All the oak trees planted in the Avenue of Honour, Woodend within the land marked L1 on Diagram 2066 held by the Executive Director.
- 2 All the land marked L1 on Diagram 2066 being part of the Macedon-Woodend Road road reserve (that section known as Avenue of Honour) extending approximately 2.5km between Clarkes Lane and North Street.
- 3 All the following objects: 75 name plaques held by the Woodend RSL.

“Statement of Significance: What is significant? The Avenue of Honour, Woodend is an extensive oak avenue of 224 trees comprising English oaks (*Quercus robur*), Algerian oaks (*Quercus canariensis*) and oak hybrids *Quercus canariensis* x *Q. robur* planted on both sides of the road along a stretch of High Street, 2.5 kilometres in length starting near Clarkes Lane and extending south to Woodend. All trees once had memorial plaques to those who served in World War I but they are now in storage in Woodend. The trees were planted by the local community with each tree planted representing an enlisted soldier from the Woodend area. The opening ceremony for the Avenue was held on 14 September 1918. How is it significant? The Avenue of Honour, Woodend is of historical, social and aesthetic significance to the State of Victoria.

Why is it significant? The Avenue of Honour, Woodend is of historical significance for exemplifying rural Victoria's reaction to World War I. It is representative of plantings that first appeared in Australia during World War I commemorating all those who enlisted for service in an egalitarian form where each individual, regardless of rank, was equally recognised for their service. It is one of only a small number of avenues in Victoria to use English Oaks. The Avenue of Honour, Woodend is of aesthetic significance as a distinctive commemorative planting and a living memorial in the town of Woodend. It is an impressive visual and cultural landmark at the northern entrance to the town and a key landscape feature of the district.

The Avenue of Honour, Woodend is of social significance for its relationship with the community as a memorial to those who served in World War I and for its continuing commemorative importance. The Avenue of Honour, Woodend remains as an indication of the involvement of Victoria's small communities in commemorating the sacrifices of their volunteers, along with the loss and sorrow experienced in small rural areas like Woodend.” n the past this community has lost some really important aspects of its Heritage and so when any new development is proposed, vigilance is always wise. Similarly, we do not have to look far to see three major buildings, which add so much to the character of the Woodend township, gradually falling into disrepair. Will neglect eventually make us believe that they are no longer important? Next month I will remind us of the sad demise of the “Wills House.” We must not let this happen again.

Submitted by Janet Hawkins

Welcome to the Woodend Star Kids Club

October Birthdays

1st	Casey Beverley.....	Turns 11
4th	Luke Muir.....	Turns 11
11th	Jordan Lee Dyer.....	Turns 10
13th	Charlotte Crook.....	Turns 7
15th	William Johnson.....	Turns 11
15th	Hayden L. Muir.....	Turns 12
16th	Tyson Lever.....	Turns 11
16th	William Scott.....	Turns 13
17th	Blaine Jackson.....	Turns 7
17th	Fletcher Coper.....	Turns 2
20th	Lachlan Leeds.....	Turns 13
20th	Luci Russell.....	Turns 11
21st	Hazel Meacham.....	Turns 10
21st	Aaron Robbins.....	Turns 10
21st	Tom Frantz.....	Turns 10
23rd	John Plant.....	Turns 10
25th	Maclaen Hargreaves.....	Turns 9
26th	Ryan Lamb.....	Turns 11
28th	Lauren Still.....	Turns 5
29th	Nellie Beatrice McKinnon.....	Turns 6

Happy Birthday Everyone!

JOIN THE WOODEND STAR KIDS CLUB

Fill in your details below and place in the drop-boxes. Age limit is restricted to 13 years old and under.

Full name: _____

Address: _____

Date of Birth: _____ Age: _____

Phone: _____

You can collect your birthday surprise by visiting Collier Office & Business Assist in the Woodend shopping centre



The official opening of the Woodend Avenue of Honour, September 1918.

TREE SERVICES

A&P Tree Services

- tree pruning / removal • stump removal
- tree planting / transplanting • rope & harness climbing
- confined space removal • fully insured

Professional commercial & residential tree maintenance
all work carried out by qualified arborist

Call Anthony 0417 059 969

WRITING SERVICES

a few good WORDS

Editorials, Publicity, Advertising, Proof-reading, Letters.

Nadine Hartnett
Freelance Writer

0439 399 838
nhartnet@bigpond.net.au

TRADE & SERVICE DIRECTORY

AIR CONDITIONING

SPLIT SYSTEMS INSTALLATION AND SALES

Efficient heating & cooling
For free quote, phone Dave
DW Air 0407 248 454

ANIMAL CARE



An alternative to
kennels & catteries
A reliable home care service for pets & farm animals,
servicing the Macedon Ranges since 2003
Phone Judy on 5427 1352

ANIMAL CARE



DIANNE'S PET SITTING SERVICE
Your pets lovingly cared for in their own home
Woodend and Macedon
Phone: 0419 326 281
E-mail: dianne@woodendpetsitting.com

BUILDER

Mark McCartney
Baiaime Nominees Pty Ltd

Period & Modern
Construction
Kitchens, Bathrooms,
Renovations, Decks, Pergolas,
Home Maintenance,
Complete Project Management

Phone: 0411 555 925
E-mail: baiame1@optusnet.com.au

COUNSELLING

 **Keryn Allan** COUNSELLOR
Dip. Prof. Couns.,
M.A.C.A.
Grief & Loss
Trauma
Stress, anxiety &
depression
Anger management
Workplace issues
Behavioural problems
Phone: 0417 011 300
Email: kezallan@ozemail.com.au

COMPOST

SIMPLY COMPOST

BRING YOUR GARDEN TO LIFE. SUPPLY NUTRIENTS,
HELP THE SOIL STRUCTURE, SAVE WATER
ORDER SOME COMPOST TODAY
ONLY \$8 PER 30 LITRE BAG

FOR MORE INFORMATION OR TO PLACE AN
ORDER PHONE ROSS: 03 5427 0867
EMAIL: SIMPLYCOMPOST@LIVE.COM.AU

DRESSMAKER

Beryl's Tailoring

DRESSMAKING, ALTERATIONS,
BRIDAL, EVENING & DAY WEAR,
LADIES AND MEN'S REPAIRS

Beryl Bachelor
QUALIFIED DRESSMAKER, NEWHAM

BY APPOINTMENT ONLY
MON TO FRI 9 - 5

5427 0568 0418 510 179

ELECTRICIAN

**Macedon Ranges
Electrics**
REC 17836
5422 2182
Dan McCarthy - Mob 0417 542 235
Fax 5422 1188
31 Redesdale Rd, Kyneton, VIC 3444
PO Box 1125
Email: sparky@macedonrangeselectrics.com.au

FIREWOOD

O'Callaghan Bros

REDGUM FIREWOOD SUPPLIERS

SPLIT RED GUM FIREWOOD

Excellent Quality Delivered Dirt Free
Ph 7 days

0407 036 800 0429 957 091

GATES, FENCING, PAVING

GATES, FENCING & PAVING

- Automated Gates
- Colorbond Sheet Fencing • Pool Fencing
- Timber & Steel Picket
- Gates Made to Order

FREE MEASURE & QUOTE
PHONE LAURIE 0419 005 185
5427 1192

HANDYMAN

Rowdy's Handyman Services

Home & Garden Maintenance
No Job Too Small!
Carpentry, Plastering, Tiling
Painting

P 5427 0072
M 0416 274 732

HOME MAINTENANCE

Home maintenance & landscaping

service including decking,
pergolas, carpentry & painting.

Stuart 0409 150 629

AH 5427 2465

METAL GATES

BVM Metalcraft
SPECIALIZING IN OLD WORLD AND
MODERN STYLE GATES
STEEL BALUSTRATING INCLUDING STAINLESS STEEL
ROPE AND WROUGHT IRON, PUNCHED RAIL FENCING
ALL MATERIALS USED ARE
GALVANIZED OR ZINC PLATED
FINISHED IN YOUR CHOICE OF POWDERCOAT
OUR DESIGN OR YOURS
METAL POLISHING - ALLOYS, BRASS, STAINLESS STEEL
CONTACT BEN 0422 288 768
FOR A FREE QUOTE

PSYCHOLOGIST

Sam Luxemburg

Registered Psychologist

- Personal Counselling in Woodend & Romsey (Medicare rebate available)
- Counselling Training
- Myers-Briggs personality testing

Phone: 0428 270 401
www.luxcollege.com.au

STONELAYING & PAVING

 **Stonemason & Paver**
specialising in

- Retaining Walls
- Drystone Walls
- Stone Houses
- Paving
- Over 20 years' experience

Cameron Dunn
Ph (03) 5427 4778 Mob 0429 162 589

Trade Page Ads are \$27 per month inc GST. Pay for 11 months in advance and receive 10% discount.

SPORTS NEWS

Macedon Teens Hip Hop Crew

5:30-6:30pm Monday Nights. Macedon Ranges Community Centre, Tony Clarke Reserve. High energy routines with involvement in competitions and festivals. \$78 for a 10-week term (term payments only). Call Buffalo Sports Stadium to secure your place in the crew 5427 3411.

Pilates Classes

6:30 Monday Nights Woodend Community Centre. Runs for 8 weeks. \$72. Intermediate Pilates 7:30 Monday Nights Woodend Community Centre. Please Call Buffalo Sports Stadium to book your place 5427 3411 for Pilates

Aerobics Classes

Feel a bit out of shape and need for more energy for Christmas activities, then you need to start now. Tuesday morning drop the kids at school and come down for an hour of aerobics 9.30am -10.30am Need more convincing? We have a great trainer Louise, heated and air/conditioned studio plus get rates. Casual \$8.50 health care card holder's \$6.50 casual 10 Pass Cards Available IT'S AN HOUR A WEEK Ok 1st Class FREE Call the Buffalo Stadium Woodend on 54 273411 for more convincing

Squash up in Romsey.

After a short introductory season, Romsey competition squash has grown to utilise two nights. Local players starved of the opportunity to play competition are coming out of the woodwork and the competition has gone from 5 teams of 4 to 8 teams of 4.

The best thing about the competition is it caters for all levels from juniors and beginners to those with established skills. The club is already taking names for the next competition which will start in early November.

Players who are interested are urged to contact Bill on 0488 348 898 to register their interest. Once registered a grading hit will be organised and you then have the opportunity to fill-in in the current competition. The competition is an in-house competition, played in Romsey on Tuesday and Thursday nights. It's a social competition with a light supper provided to encourage players to stay for a chat after the matches have been complete.

submitted by Bill Hutcheson

Macedon Ranges Futsal

Winter Season Grand Finals The Grand Finals for the winter season of Macedon Ranges Futsal were held on Friday 11th September at Woodend Stadium.

In an exciting first game for the 12 & Under age group, team Extreme came out winners, beating Blue Bolts 6 – 5. Lachlan Fletcher was awarded Man of the Match by the visiting referee from Football Federation Victoria.

The 16 & Under Grand Final was not so close, with Larry, who had not lost a game all season, beating Mean Machine 6 – 2. Man of the Match was Jake McIntyre for Larry.

Just a reminder to those who want to play in the Summer Season, the Registration Day is Wednesday the 7th October, from 5 – 7pm at Woodend Stadium.

For further information phone Dee 54271726.



12 and under winners
Team "Extreme"



16 and under Winners
Team "Larry"

Woodend Hasket Football Netball Club Annual General Meeting

The WHFNC AGM will be conducted on Wednesday, 14th October 20st at the Gilbert Gordon Social Rooms, Woodend 7:00 for a 7:30 start All welcome. Enquiries contact : Sue Cerminara 5427 2068 / 0414225862

WOODEND HEALTH & FITNESS

- Wide range of equipment
- Group fitness classes available
- Teen's Gym sessions available
- Personal training available

Start your fitness campaign today
30 Wood Street, Woodend
Phone Brian on 5427 1181 or 0488 016 709

FLYING START FITNESS
make it happen!

• PERSONAL TRAINING • GROUP FITNESS

Gordon Muir
Certificate III & IV in Fitness
0425 111 765