

THE NEW WOODEND STAR



Circulation of 3180 throughout
Woodend postal district, Newham, Hesket, Ashbourne,
North Woodend, Hanging Rock, Carlsruhe, Cobaw.

AN INITIATIVE OF THE ROTARY CLUB OF WOODEND

AUGUST 2009

A Monthly Community Periodical

First Publication 1997

Volume Thirteen No. 7

Support your local CFA and you could win a holiday for two in New Caledonia

Gabriel Gaté supports the Woodend CFA

Following the horrendous fires of last summer, a group of very generous clients of Woodend CFA 1st Lieutenant Mike Dornau offered a fantastic holiday to be used as a fund-raising prize. It was then decided to broaden our horizons and run the raffle to raise funds for all CFA Brigades in the Mt Macedon Group. So proceeds will be shared amongst the CFA Brigades in Woodend, Gisborne, Macedon, Mt Macedon, Newham, Hesket-Kerrie, Riddells Creek and Bullengarook.

A fantastic holiday worth up to \$8,000

The prize for two people has generously been donated by New Caledonia Tourism and their partners, and includes the following:

- Return economy airfares from Sydney or Brisbane to Noumea flying Aircalin (New Caledonia's international airline)
- Return economy airfares from your nearest capital city to either Sydney or Brisbane
- 5 nights 5 Star accommodation at luxurious Le Meridien Resorts (3 nights in Noumea and 2 nights on the beautiful Isle of Pines)
- Return economy airfares from Noumea to the Isle of Pines with Air Caledonie
- Return airport transfers in New Caledonia with Arc en Ciel Voyages
- Travel insurance thanks to Travelscene Insurance.

To top it all off former Woodend CFA secretary Andrew Wilson-Annan, who works with the ANZ Bank,

continued page 3



What's life like as a ...?

Wednesday 19 August, 7pm – 8.30 pm

Woodend Community Centre

The Rotary Clubs of Woodend and Kyneton together with the Careers teachers at Sacred Heart, Kyneton Secondary, Gisborne Secondary and Braemar Colleges, are inviting year 11 students from the Kyneton and Woodend districts to meet and interact with a group of interesting and experienced people representing a broad range of professions including Healthcare, Engineering, Law, Science, Arts & Entertainment, Architecture/Sustainable Living, Information & communication, and Business & Logistics.

How do you choose a career? – Often by accident or because you admire someone, or you are interested in science (for example). But how much do you really know?

We are offering a careers evening with a difference. Not how do you get into engineering or a health profession, but what sort of a life is it? What can you do with the basic qualification and where else can it take you?

Each school can send about 15 students who can nominate the four professional groups they would most like to learn about. Groups will be limited to 6 – 8 students who will have 20 minutes to check out a few lives for each of their four chosen professions.

We'll open the evening with an inspirational speaker. In another room, your parents can also ask questions of other professionals and each other, so they can help you make your decisions.

We believe that your basic qualification is just the start of a life that can be as interesting and varied or as predictable as you want to make it. We would love to take the opportunity to listen to your questions and to share some ideas about how you can make those choices. Your basic qualifications in engineering can take you into accountancy & business. Your basic health qualification can take you into travel and teaching. Law is a great grounding for business and farming. Everyone gets setbacks in their plans – and that is your greatest learning opportunity. People who learn to take manageable risks always grow more than people who take the safe option.

Go boldly and invent your future!

Submitted by the Rotary Club of Woodend

Help us help you! Please EMAIL your ads and articles PRIOR to the 15th of the month to sales@collierooffice.com.au

Bradley's Curtains + Blinds

New showroom now open
Mon to Fri 9 - 5.30 + Sat 10 - 1



t 5427 2361 fx 5427 1019 72 High Street, Woodend VIC 3442

www.bradleyscurtains.com

Woodend Scout Group

The Woodend Scouts are opening their doors once again on Sunday, August 16, 2009, supporting local businesses with an indoor market/fete. Shop in the atmospheric log cabin, in front of the fireplace enjoying great coffee, soup and delights or venture into the scout hall, enjoy the belly dancing, spiritual readings, and more shopping for spring and fathers day. Shake the winter blues and enjoy a day out with the family, face painting, games and door prizes galore. All profits will help send our scouts to Jamboree 2010.

Your Memories to DVD

- * 8 mm/16 mm Films
- * Mini DV
- * Compact VHS
- * VHS

Discount for Quantity



Top Hat Productions
Ph: 5422 3930

SUBSCRIBE TO THE NEW WOODEND STAR

Do you live outside the *New Woodend Star* distribution area? be sure to receive your copy every month by subscribing. A yearly subscription of 11 issues is just \$27.50. Post to *New Woodend Star, C/- The Bank, 75 High Street, Woodend 3442.*

Name: _____

Address: _____

Phone: _____

Enclosed: Cheque/Money Order for \$27.50

The New Woodend Star

An initiative of the Rotary Club of Woodend Inc.
The Bank, 75 High Street, Woodend, Vic. 3442
ABN 32 685 225 161 No. A0021518E

Layout & printing by **Woodend Copy Centre**

For people wishing to submit stories, articles, letters to the publication, simply place the information in the strategically placed drop-boxes. These are located at the Liquor Shop, Collier Office & Business Assist, The Bank @ 75 High Street and Woodend Newsagency.

EMAIL articles preferred: sales@collieroffice.com.au

Circulation: 3190 copies throughout Woodend and district

Disclaimer: The opinions and views expressed by the contributors are theirs alone, and do not necessarily reflect the views and opinions of the Committee of Management, or the Rotary Club of Woodend.

The Committee reserves the right to edit articles for length and clarity.

Committee: Barry Napthine, Ivor Johnson, Claudia Green, Irene O'Duffy, Alexia Downie, Joy Barker and Jane Watters.

Closing date for inclusion of articles or advertising for each issue is the 15th of the month prior to publication.

Advertising available

For all bookings and artwork submission please contact Alexia 5427 3092.

Artwork to sales@collieroffice.com.au

This newsletter is supported by



ADVERTISERS PLEASE NOTE:

Unless specific dates are given for inclusion - all advertisements will be placed and charged for until notified otherwise **IN WRITING.**

Advertising Rates for 2009

New advertising rates per month from 1/1/09

All rates include GST & are priced per month.

Business card (55mm x 90mm)	\$41 inc GST
Trade Page	\$27 inc GST
Quarter page (90mm x 134mm)	\$90 inc GST
Half page (90mm x 277mm)	\$160 inc GST
Full page (190mm x 277mm)	\$280 inc GST
Insert (of your printed brochure)	\$180 inc GST

Advertisers: Please note - it is in your interest to book and pay for a year in advance, as a 10% discount applies to any full year pre-paid booking.

Any existing pre-paid ads will revert to the new rate on completion of the pre-paid period.

Information for advertisers

Any accounts queries can be made to Joy on 5427 4089 during office hours.

Mail should be directed to: New Woodend Star, C/- The Bank, 75 High Street, Woodend 3442.

Drop boxes for articles are at: The Bank (75 High Street), Woodend Newsagent, Collier Office & Business Assist and Marks' Liquor Shop.

Copies of the publication will also be available.

Woodend Star Publication Dates for 2009

September	31st August
October	28th September
November	26th October
Dec / Jan	30th November

Advertisers and contributors are reminded to book in by the 15th of the month with artwork to follow immediately. Changes to advertisements, new advertisements or cancellations should all be made by email or in writing.

arranged for \$1000 spending money thanks to the ANZ Bank. That all adds up to one brilliant holiday ... and you're supporting your local CFA at the same time.

Beautiful New Caledonia

New Caledonia is a tropical island paradise located only 2 hours flight from Brisbane and less than 3 hours from Sydney. A unique blend of French and Melanesian cultures surrounded by the world's largest lagoon and 2nd largest coral reef – which are now on the World Heritage List. But it's not only beautiful it's also delicious. Gourmet Ambassador Gabriel Gaté has described New Caledonia as "one of the finest French gourmet experiences outside of France".

Tickets are only \$5 each

Tickets are now available from your local CFA – listed above. All of these brigades are open every Sunday morning, so make sure you call in and buy a few tickets. Why not get a book of 25 tickets and sell some to your friends – remember all proceeds support your local CFA.

We will also be attending local markets and events over the coming weeks where you can also buy tickets. Or you can find out how to get a ticket by visiting the Woodend CFA website: www.woodendcfa.org where you can send an email from the website to request a ticket or email: m.dornau@dornau.com.au to order tickets.

Entries close October 31, 2009 – so don't miss out.

Conditions apply – and they are all listed on the entry ticket or you can visit the website: www.woodendcfa.org for more information. The prize must be taken within 12 months of the date of draw.

Raffle Permit Number: VIC 11208/09

Woodend Rainfall Report 2008

Each month we add the rainfall details and the year to date total. Our rainfall report shows 2004, 2005, 2006 and 2007 comparisons. Please note that your own rainfall readings may not exactly match these. These readings are the official BOM readings and have been taken in the same location in Woodend for many decades. All measurements are in millimetres.

	2004	2005	2006	2007	2008	2009	
January	21.2	47.4	49.8	83.5	17.1	0.0	Jan
February	6.2	72.2	53.1	27.4	22.1	0.0	Feb
March	19.0	5.8	20.6	35.7	25.4	32.3	Mar
April	41.2	18.8	46.4	20.2	20.4	38.6	April
May	39.3	13.6	58.8	95.7	43.7	32.5	May
June	98.0	116.7	36.0	105.1	88.7	56.0	June
July	93.8	76.9	91.6	83.3	112.5		July
August	76.1	125.0	30.8	34.8	52.2		Aug
Sept	31.7	55.2	50.6	49.8	42.0*		Sept
Oct	38.9	49.8	5.2	12.1	13.0*		Oct
Nov	111.0	72.4	13.0	91.0	67.2		Nov
Dec	144.2	40.0	31.0	101.2	96.0*		Dec
YTD:	720.6	693.8	486.9	739.8	600.3	159.4	YTD

Reminder: We are now on Stage 3A water restrictions.

Figures for 2008 include information from a different location indicated by *. This has resulted in a slightly different total than the official BOM totals.

For the year to date 30/6/09 there was rainfall of

159.4 mm

1 inch = 25.4 mm therefore the total year to date is 6.27 inches

Why not become a CFA member?

The CFA welcomes the efforts of volunteers across a wide range of skills and jobs. There are opportunities to contribute beyond fighting fires and attending emergencies. We have a broad membership base across the ages, sexes and backgrounds. You'll be amazed at the number of different ways you can contribute ... to give something back to your community!

If you live or work near your brigade – we do need your help!

All CFA Brigades in the Mt Macedon Group (see list above) need more members for Daytime Response, especially on weekdays. While we have a growing membership list, many of our members now work out of their brigade area, which makes it difficult sometimes during weekdays to get enough members for a turnout. If you are around town during the week, and are interested in doing something really valuable for our community, please give us a call. We are ready to start your Minimum Skills training very soon, and you should be qualified in time for the summer fire period.

Submitted by 1st Lieutenant Mike Dornau, Woodend CFA

ADVERTISEMENT

Donna Petrovich MP
State Member of Parliament for Northern Victoria Region

Working for the Woodend Community

Your Country Voice



☎ 5782 2011
84 Sydney Street, Kilmore

Authorised by D Petrovich, 84 Sydney Street, Kilmore.


FAIRHURST CONVEYANCING
and Secretarial Services

For all your
Property Transfers
Ring Sue Fairhurst on
5427 2382
27 Urquhart Street, Woodend
MVCA & AIC

Licensee:
A. (Sue) Fairhurst
Licence No.:
000316L

Building Environment

Architectural Design and Landscape

Stanley Ziolkowski

Registered Practitioner

0439 988 277

- house plans
- documentation
- aesthetic design
- building approvals
- landscape design
- town planning submissions
- building renovations and extensions



Thank you

I would like to express my gratitude to the many people who have supported me since the passing of my beloved husband David on March 2.

David's association with the Woodend and wider Macedon Ranges community grew with the furniture business he started almost 20 years ago.

'My Style' handcrafted furniture found a home in every corner of the Macedon Ranges as well as places further afield.

We were delighted to build an appreciative and loyal clientele.

I am so proud that David has left such timeless legacies that will be a reminder of his tremendous passion and talent. And I am glad that his wonderful personality has left an impression on your hearts.

Sincerely,

Charmaine Varrese

WOODEND

Proud to be Pokie-free



24 Seven Alarms Aust Pty Ltd

- Alarms installed, Serviced and Monitored
- Data cabling and phone line installation
- Digital Video Surveillance
- Medical Alert Systems
- Access Control Systems PSBL: 732-083-90s

1800 247 111/ 03 5427 4411

sales@24sevenalarms.com.au

Now Based in Woodend

Working with you in
the Macedon Ranges

HON **FRAN BAILEY MP**
Federal Member for McEwen

For assistance on electorate matters

1300 131 186

www.franbaileymp.com

Authorised by Fran Bailey 237 Maroondah Highway Healesville 3777

Grant for Newham memorial

The World War One honour roll at Newham Primary School will be restored with a *Saluting Their Service* grant announced by member for McEwen Fran Bailey.

Fran said the school had been awarded a \$3729 grant to do the work.

"Restoration of the honour board will heighten awareness and understanding among today's students for the values of freedom and democracy cherished by those who attended Newham school almost a century ago," Fran said.

"Many of those students in the early years of the 20th century enlisted to serve at Gallipoli and in Egypt and France, some never returning home.

"The project will help today's students and the community continue to honour the service to Australian made by earlier students."

Fran said *Saluting Their Service* grants helped promote appreciation in our local communities for the service of Australian servicemen and women in wars, conflicts and peace operations.

CARPENTRY, MAINTENANCE & REPAIRS

DECKING PERGOLAS

FENCING

- WOVEN WIRE
- TUBULAR / POOL
- COLOURBOND



ROSS

0418 364 125

03 5427 2849

BGE

Joinery **Quality you deserve**

- Kitchens • Shop fittings • Bars

BRAD ELSE

Mob: 0412 355 548 Ph: 5422 2571

Factory 2/27 Redesdale Rd., Kyneton

Visit our Showroom 166B Mollison St, Kyneton
11am - 5pm Fridays or by appointment

SOLAR DIRECT

- Solar Hot Water
- Grid Interactive Solar Systems
- Stand Alone Power Systems

Ph: 1300 55 77 98

Mobile: 0411 269 489

Lancefield



**FIREBIRD MOTOR REPAIRS
CAR WASH**

31 URQUHART STREET
WOODEND 3442.

OPEN 7 DAYS
Phone:(03) 5427 2255

Disco Fever

Get down and boogie at St Ambrose Hall, Woodend on Saturday, August 8 when the school's PFA throws open its annual supper dance to platforms, flares, big hair and sequins.

The event, which has become a popular event on the town's social calendar, will revive the disco fever that swept the 1970s and 1980s ... for at least one night. Prepare yourself for some groovy moves as a DJ plays hits that ushered legends such as the Bee Gees, ABBA and Michael Jackson into the pop charts.

The fever will spread from 7.30pm until late, so book your babysitters now and secure one of the hottest tickets in town for \$25. Organise a table of up to 10 people or put your name down to join another party. BYO glasses, drinks and nibbles.

Bookings through the St Ambrose school office on 5427 1285. For more information call Pauline Neil on 5427 0870.



JULIE ANN WARD
Visiting Hair & Beauty

"Home service with a smile"

9 Ashbourne Road
Woodend Vic. 3442
P: 5427 1538
M: 0423 676 415

Paramoor Farm Fayre

Father's Day, Sunday Sept 6; 10 am to 4 pm

Paramoor Farm Fayre is on once again this coming Father's Day. Enjoy a day out with dad and be entertained with over 50 excellent food, wine, art, craft and produce stores and activities for children. You'll also see singers, musicians and poets, including a guest appearance and special workshop by Tonia Todman. Admission is \$5 for adults, with children free. No dogs. For more information www.paramoor.com.au

GARAGE DOORS

ELECTRIC GATES • SOLAR GATES

SELF OPENING GLASS DOORS

Ken Ross

0427 661 543 5422 7507

Central Highlands Doors & Gates

Serving Kyneton & Woodend



 **bodywise**
UNDERWEAR
comfort for women ... everyday

Bodywise bras for real women of all ages and stages ... everyday, maternity and sports bras.

Wire-free for comfort
Register online or phone us for a **free brochure & bonus voucher.**

Stocking Bodywise & Anita brands
Sizes 10-28 and cup sizes A-I, depending on style and brand
7-day exchange policy.

Shop 19, 130 High St, Woodend Vic 3442
www.bodywise.com.au
1300 66 17 66

CKF's Women's Clinic (Eliza's project)

Eliza is a year nine student at Sacred Heart College, Kyneton.

Eliza decided to raise money for the Cambodian Kids Foundation after being assigned a school project on gender equality and women empowerment. To date Eliza has raised \$315.

In response to Eliza's generous support the Cambodian Kids Foundation have created a women's clinic program, in which two women per month can be taken to a health clinic in Phnom Penh for services such as mammograms and pap tests.

The foundation's new program also supports women by supplying sanitary pads, things that normally, women would go without, due to lack of funds.

Young girls who attend school and university often take time off during their menstrual cycle to avoid the embarrassment that may come from not using pads etc.

The new program allows women and young teens to talk about women's health issues such as sexually transmitted diseases, breast cancer, menstrual periods etc. in a safe, clean and comforting environment amongst other women.

This project is only new but we already can see the huge difference it is making.

There are so many women in Cambodia who are silenced by culture, or by fear of embarrassment.

This project has already become one of our priorities. We hope to expand it soon as the need is very great.

Watch this space for much more news to come about the Women's Clinic.

Written By Sam Cooper

Music Lessons

Jacky Ogeil (B.Mus, B.Mus.Ed, M.Mus, PhD) is opening a music teaching studio in Woodend for all ages, beginners to University level.

Private lessons available in piano, harpsichord, theory, harmony, figured bass, accompanying, sight reading, aural training, exam/recital preparation, performance anxiety, music appreciation, music history and VCE.

Also available as an accompanist.

Taking bookings for 2010. Group theory and aural lessons available for special discount prices.

Contact: jackyogeil@ozemail.com.au

"Music is not an occasional social function - it's a basic necessity to have a civilised life and be a civilised person in a civilised world." Isaac Stern

WOODEND IMPORTS

Stock Clearance **SALE**

Wooden Handmade
Children's Furniture,
Handcrafts, Ceramics,
Handbags, Jewellery, &
Much more...

WHOLESALE PRICES

Saturday 5th &
Sunday 6th
September

9am – 5pm
40 Plants Lane
Woodend

For further information
0408 599 066

Joanne Duncan

STATE MEMBER FOR MACEDON

MP

Friends,

At the heart of good governance is honesty & accountability, as well as an understanding of the issues confronting the whole of society.

If you have any concerns you wish to raise, please do so.

Feel free to call me on:

5428 2138



NEWS FROM NEWHAM

We continue to be a hive of activity out at Newham – we may be small but we achieve heaps!

The Hall hastens slowly as can be seen, but there is much behind the scenes choosing of colours, landscaping advice, reviewing of plans and operational manuals and we are also taking bookings if you want to have your event/meeting in our great new Hall with terrific facilities. Once we move all the “stuff” from the Hall to our new storerooms there will be conservation work carried out on the Hall. We have sourced new ceiling roses and also had a life members board made up.

We know some people don't like the “different” look of the new building but this is a Heritage requirement and when it is landscaped and plants are growing it will look more integrated – just bear with us! Want to book the Hall? contact Fran Spain 5427 0661.

Grand & Official Opening is Friday December 4th @ 11.30 am – politicians will be in evidence.

THE PRIMARY SCHOOL has moved to its new buildings and the old portables are gone – thank goodness! Further funding for a Music room and renovation of the soccer pitch has been obtained.

Congratulations to Caroline Robb and her staff, The School Committee and everyone who helped out - this has been a huge task for them.

Have you thought about your kids going to Newham Primary?

THE MULTIPURPOSE COURT for community use now has a site and funding has been applied for. If you want to know what's happening/help out contact Kathryn @ 5427 0153.

With support from the Shire, STREETSCAPING has started with initial work being carried out on the footpath from the School to the CFA shed/road crossing.

Interested in beautification of the roundabout?? contact Hilary 5427 0795.

THE GENERAL STORE - Julia & Michael are now open 4 days per week:

Thursday & Friday 7:30 am to 5:30pm

Saturday & Sunday 7:30am - 4pm

SUSTAINABILITY DAY is being organised by Jim Sansom for Saturday 13th March 2010. Jim will need a hand with this big project, suggestions for speakers & participants as well as display ideas. An exciting opportunity to be to be

**WOODEND
NURSERY &
GARDEN SUPPLIES
OPEN 7 DAYS**

"LOCAL KNOWLEDGE FOR LOCAL CONDITIONS"
36 URQUHART ST, WOODEND
Tel: 5427 1866 Mobile: 0428 271 866

Full range of garden & landscape needs
Rock, Soil, Sands, Sleepers
Bobcat hire

TERRY'S GROUND CREW
0400 909 303

ENJOY YOUR PRECIOUS WEEKENDS

**MACEDON RANGES
VOUCHERS ACCEPTED**

**REMEMBER VOUCHERS
EXPIRE 30TH JUNE**

**pensioner
discounts
available**



We deliver to your home the

**freshest, best quality,
certified organic
fruit & vegetables available**
& guarantee this 100%

Pick from a range of pre-selected boxes or select your own order from our weekly availability list

Phone: **0409 386 875**
or **5429 1156**
email: vivien@netcon.net.au

www.vivsorganics.com.au



All news items, articles and community news columns must be received by 15th of each month.

involved with a very topical issue and to provide the wider community with information and ideas. This will be done in conjunction with Solar Grants obtained by the Hall. Contact Jim @ 5427 0408.

Interested in COMMUNITY PLANNING? contact Hilary @ 5427 0795 and come along to the meetings. It's your community and it's great to be involved.

LANDCARE AGM Friday 14th August @ 7.30pm. EVERYONE WELCOME. SPEAKER: Phillip Flannagan will be talking about "Why Migratory Birds like Sustainable Coffee". The AGM is very short and supper follows the speaker

WEBSITE: this is now operating at www.newham.vic.au - if your group wants to included or linked contact Stephen at info@newham.vic.au

Did I say we achieved heaps?
Submitted by Sally Stabback

Woodend Lions Club

Thanks to all in the community that have supported our recent fund raising activities and BBQs. During the cooler weather the 'market' is takes a holiday (June-August) and you will see it return with the 3rd Sunday in September. That's just in time to get the your spring plants for the garden and start your Christmas purchases.

Over the last few weeks we have been busy visiting other Lions Clubs and sharing in the good fellowship at their annual Change Over of Executives ceremonies. The Woodend Club change over is Wednesday 5th August. If you are interested in attending ring our Secretary, Robyn Robbins or incoming President Liz Johnstone.

This month we welcomed 3 new members from Woodend – Barry McDonald, Thierry Bertalmio and Dennie Sterley. These new members are a great asset to our growing club.

We welcome new members and friends to join us at the change over or any dinner meeting, which are held the 4th Wednesday monthly. For more information ring our friendly Secretary Robyn, 5427 1342.

MASSAGE THERAPY

Natalie Taranto
Reconnect and Restore the Flow Within

Remedial Massage Therapist

- Deep Tissue
- Relaxation
- Pregnancy
- Reiki



Now at McCubbin Cottage
58 Urquart St. Woodend
Call for an appointment

\$10 off initial visit

0402 534 983
mobile massage also available

Discover your

inner artist

ART & CRAFT MATERIALS

Join our Craft Workshops

• Beading • Card Making • Scrapbooking •

43 Anslow St. Woodend **5427 4455**

The Wondering Gardener

That's it. Wondering where to start.

Seven years ago we strode across the paddock marvelling at the view and the space. We placed a stake in the ground declaring to the wind, "Here we shall reside", and the view was so gorgeous that it never occurred to me to do anything other than look at it.

I think the problem is motivation ... (a) getting out of the chair (b) getting dirty (c) having the kids trash the house while I'm out of the chair getting dirty.

Last autumn sale I bought half a dozen trees which in my absence were deemed potbound and inferior and relegated to the nether regions, leaving both the garden and myself to wonder ... "where did they go?"

There's a feature rock roundabout standing sentinel in the driveway, vetting those who enter and quietly making it's own little statement. "Stop now before you hit the house".

There once was a tree with the roundabout's name on it, but am wondering now where it got planted, because it ain't in the roundabout. In fact, the roundabout's been there so long now without any signs of life (except the kids playing in the dirt), the neighbours asked if it was a swimming pool.

Unable to strike a tree decision, I stuck 90 red tulips in there so at least come spring, it'll look like someone lives here. Wondering wondering. Wondering where to start.

Oh well. Let's wait till we get a fence.

Submitted by Kathy Mexted

Peter Baker & Associates Barristers & Solicitors

Family Law
Criminal Law
Crimes Compensation

NOW TAKING APPOINTMENTS
IN WOODEND

Peter Baker
BSC & LLB (Monash)

Juliana Smith
BN & LLB GDLP (UNE)

Ph: 5441 7300
Fax: 5442 4232

Level 1, 21 View Pt Bendigo
info@peterbakerlaw.com.au

FIRST INTERVIEW FREE

New Clinics NOW OPEN Find out if Chiropractic can help.



Romsey

Romsey Medical Centre
99 Main Street, 3434
Ph: 5429 5254

Riddells Creek

5a Station Street, 3431
Ph: 5428 7100

Kyneton

Coliban Medical Centre
19 Jennings Street, 3444
Ph: 5422 1412

STRESS
SCIATICA
JOINT PAIN
HEADACHES
NECK PAIN
DISC PROBLEMS
BACK PAIN

NOW OPEN

Call to make an
appointment
today!



Macedon Ranges
Chiropractic

Upcoming Feature and Notice to Advertisers

The New Woodend Star will print a special October feature about Woodend and surrounds. If you're a local business with something special to promote this spring, we invite you to place an advertisement and/or editorial in this feature. For information, phone Alexia on 5427 3092.

The New Woodend Star would also like to remind advertisers and contributors that the 15th of each month is the deadline for submissions. Advertisers should be sure to get any modifications in prior to the 15th, or earlier if possible. This will ensure that your contribution or advertisement is included in the next edition. Email is always preferred: sales@collieroffice.com.au



ARCHITECT

COMMERCIAL
DOMESTIC
ALTERATIONS

ARKITURA
pty ltd

0429 844 800

IAN SCOTT
PO BOX 806 / 49 WATERWORKS RD / WOODEND VIC 3442

B.ARCH(HONS) EDIN. ARBV

Meta Massage

SPORTS/REMEDIAL MASSAGE, SHIATSU, REIKI
Raymond White

Telephone 0411 268 336

for an appointment

18 years experience • Chronic and acute conditions

Sports injuries • Rehab work

\$45 special for tradies, runners & bike riders

Woodend Fire Brigade Auxilliary Shopping Tour

Saturday October 3

Here's a great opportunity to get some Christmas and Gift shopping done early, and get some great deals into the bargain. You'll visit 10-12 outlets, including some new outlets: Toys, Cosmetics, Manchester, Homewares, Gifts, Nuts & Spices, and much more. Only \$55 including transport, morning and afternoon tea, and a hot two course restaurant lunch. \$20 deposit or full payment required when booking. For more information or bookings contact Alma Warnock on 5427 1644 or Linda Healy on 5424 8447 (AH) 5427 2225 (BH).

Cute as a Button Babe



New Button Babes pinafores are hand-made locally, available in sizes 6 months to 3 years and can be worn as a dress or a top. Designed for all seasons using gorgeous colourful fabrics. **What's New at Zappa-do?** Children's upholstered chairs, hand-worked plated silver and pearl earrings ... and lots more!

ZAP3404

ZAPPA-do *Baby and You!*

Shop 3, 87 High Street, Woodend. Ph: 5427 1270

All news items, articles and community news columns must be received by 15th of each month.

Cambodian Kids Foundation

Earlier this year, Drew McDowell, founder of the Aziza school, approached The Cambodian Kids Foundation with a small problem he was facing. Drew had two young boys, Power (4) and Pakway (3), in need of some day-time protection and education.

The orphaned boys, were in the 'care' of their grandmother, after their father had died, and their mother, a drug-addict had left them. The grandmother worked a 12 hour day leaving the boys from morning to evening with no food, no shelter and nothing to do. The boys found themselves wandering the streets at the building block, scrounging food from their neighbours.

Too young to attend Aziza classes, Drew didn't know what to do with the boys. CKF were contacted. We first looked into paying for the boys to attend an already established kindergarten or day-care centre. But nothing seemed to fit the needs of the boys entirely. We needed them to be fed, washed, taught, entertained and cared for, for a full day, 6 days a week.

We realised this was something we would have to do ourselves. Our decision was to open our own kindergarten, which we could build around the needs of our kids. Obviously, the costs involved to run a kindergarten, but care for only two kids, is neither practical nor fair. But, young children in need of care aren't exactly hard to come by in Cambodia.

Jett (2), lives in Dey Krahorm building block and his three siblings attend Aziza. Jett's father has recently suffered a serious stroke and heart attack and has been left in an unconscious state, in hospital. At the present time, Jett's parents are simply unable to look after him fully.

We only had three kids, but decided, rather than make these children and their families wait until we found the rest, we could open now and build on it. We intend to have in total, around 10 kids, after we have settled in.

The teacher we have employed, Tevin, is a university student, who's house was demolished in the recent land-grabbing of Dey Krahorm (check website for details). Her previous job, data entry, offered her little enjoyment and poor pay. She is very happy with what we have offered her, in terms of work. And even more so, that we have allowed her to live in the other room of the Kindergarten.

Tevin and CKF scouted for rooms to rent, furniture, equipment, everything we needed to create this kindergarten. In the space of about a week we had organised everything and we were ready to move in.

Starting at 6am, and ending much much later, it was a gruelling day of scrubbing, cleaning, sweeping, hanging, constructing, arranging, rearranging, and finally, finishing. We worked hard, but were able to commence classes, the following day.

The start up costs for the kindergarten were kindly paid for by Wayne and Anne Petersen and Pat Chivell. However, we are now seeking monthly sponsorship for this project. Sponsorship in any way would be greatly appreciated. Please contact us if you are interested.

Please check out our website for more details. And contact donna@cambodiankidsfoundation.com if you wish to help out in any way.

Submitted by Jack Cooper

The Karlsruhe Annexe of Woodend Primary School

The Karlsruhe Annexe of Woodend Primary School is a separate campus situated at the old Karlsruhe Primary School site approximately 7 kms north of Woodend. It is a beautifully treed half hectare property consisting of the original red brick classroom, a portable classroom, mud brick poultry pen, a large fenced vegetable garden, small orchard, a playing oval and two paddocks for farm animals.

The Grade 4 students at Woodend Primary School travel by bus to the Karlsruhe Annexe for four days per week where they continue studies of the core school curriculum as well as a specially designed integrated program. The integrated program highlights environmental activities that give students the opportunity to be responsible for the care of animals, gardens and the local environment.

The program is implemented through many hands on activities. Students care for the annexe farm animals and pets consisting of hens, ducks, lambs, rabbits and guinea pigs. They tend a large vegetable garden, maintain a worm farm, propagate and grow trees and manage a large compost heap. The students also research mini beasts, birds, wildlife and plants of the Karlsruhe area to find out what part they play in the eco-system.

Other components of the Karlsruhe program include the four modules of Sustainability – Waste, Water, Energy and Biodiversity; involvement with the local Landcare group; monitoring the quality of water in the Campaspe River; performing at the Beat Concert during the Kyneton Daffodil Festival and utilising vegetables and produce grown at Karlsruhe for cooking. During the second half of 2009 a sheltered outdoor eating area and pizza oven are being built at Karlsruhe to further enhance the annexe environment and allow for greater learning opportunities.

It is hoped that through this program students will have a wonderfully different learning experience and along with developing their academic skills and knowledge, are able to become more caring and responsible towards themselves, each other, animals, plants and the environment. Ideally, this caring and responsible attitude will prevail throughout each student's life.

Woodend Primary School is currently taking enrolments for 2010 for all year levels. Anyone wanting a tour of the school, or the Karlsruhe Annexe, needs only to ring the office on 5427 2455 to arrange a time.

Submitted by Andy Kozak, Principal



Students tending to some of the Karlsruhe animals.



Students busy weeding the vegetable garden at Karlsruhe.

The fencin' fella

- colorbond
- tubular
- timber
- steel picket
- pool

Mini Earthmoving Kanga Loaders

Attachments include:
rotary hoe, soil leveling bar,
4 in 1 bucket, trenchers,
post hole diggers, tipper

SHAUN BARRON

MOB: 0407 232 900 or 5422 3488 AH

CASTLEMAINE—GISBORNE CLEANING SERVICE

CHRISTINE ADAMS, FRYERS ROAD, ELPHINSTONE 3448

Carpet Cleaning Specialists

Duct Cleaning, Window Cleaning, etc.

For all your cleaning requirements

- no job too big or too small -

obligation-free quotes

Tel: 5473 3307 Fax: 5473 3310

Mobile: 0419 006 591

MACEDON RANGES SELF STORAGE

- * 7 day access
- * Individual units
- * Affordable prices
- * Insurance available
- * Now Fully Alarmed

Store your:
* Cars
* Boats
* Business documents
* Furniture etc.

Lot 3, Hoyle Court, Kyneton
(Off Beauchamp St)

5422 1898
5422 3488

Macedon Ranges Sustainability Group

As part of our Annual General Meeting and Guest Speaker series the **Macedon Ranges Sustainability Group** is very excited to present **Earth Garden magazine** editor Alan Gray speaking about two of his current projects, *Solar Lights in the Himalayas* & *Electric Cars on Australian Roads*.

Alan Gray will present a slide show and information about projects with the Himalayan Light Foundation of Nepal, involved with installing solar lighting plants in Nepali village health posts, schools and kindergartens. Alan will also show slides about his 4-door electric hatchback car which runs on solar panels backed by mains Green Power.

The strawbale, solar-powered office of Earth Garden magazine located just up the road in Trentham has been publishing information about sustainable living since 1972.

Don't miss this opportunity to hear one of the gurus of the Sustainability Movement talk about real ways of making a difference.

AGM 7.30 pm – 8.15 pm 5th August

Alan Gray's presentation: 8.30 pm

Macedon Ranges Sustainability Group

Function Room, Woodend Neighbourhood Centre, 47 Forest St, Woodend. www.woodendweb.org/mrsg

Hesket Primary Supper Dance

Featuring Darryl Cotton

It's on again, the 22nd Annual Supper Dance hosted by Hesket Primary School, featuring Darryl Cotton & Band at the Kyneton Town Hall on 29th, August. This is the major fundraiser for this small school with a big heart. For the past 22 years Hesket P.S has hosted this spectacular night of great music, dance and good old fashioned supper for the wider community to enjoy.

This year's theme will be Science Fiction/Fantasy. Come dressed as your favourite Science Fiction character for your chance to win the coveted prize of Best Dressed!

In addition to Darryl Cotton & Band playing great tunes, there will also be opportunities to bid on silent auction items, or enter into a raffle.

Tickets for this Annual event are \$30 per person, supper included. This evening is for big kids only, sorry no children allowed. BYO alcohol, doors open at 7.30pm.

All tickets are non refundable.

So if you need something to shake off the winter blues this is the perfect evening for you and your friends.

For enquiries contact Kerry at Hesket Primary School Tuesdays or Fridays on 5427 0330, for ticket sales contact Amanda or Sylvia on 0429 627 878 or heskettandson@gmail.com





Blue Orange Concepts
kitchen cook table home

15% off cutlery this August

Robert Welch

**Shop 2, 130 High Street
Woodend. Ph 5427 4500**

Pamela Kell

Remedial Massage Therapist, Level 1 Pilates Instructor
SSNT/AAMT, Workcover accredited
Relaxation, Sports, Remedial Massage
Manual and Lymphatic Drainage
By Appointment
22 Goode Street, Gisborne
5428 1000 0408 093 098

Regular business card advertisements (90mm x 55mm) are \$41 inc GST per month - book & pay 11 months and get 10% off.



T.J. SCOTT & SON

F u n e r a l D i r e c t o r s

- Serving the Macedon Ranges for almost 70 years
- Available 7 days a week, 24 hours a day
- Specializing in Pre-paid funerals

For further information, call the Scott family:
John, Kelly, Jack, Paul & Daniel.

5 Piper Street Kyneton 54226455	46 Aitken Street Gisborne 54284155
---------------------------------------	--

www.tjscottandson.com.au
info@tjscottandson.com.au

Eating Out, In & Around Woodend



the bentinck
Conferences • Events • Weddings

Call now for information on our new wedding packages!

T: 03 5427 2944
F: 03 5427 2232
E: sales@bentinck.com.au
W: www.bentinck.com.au


Changes at the Bentinck

Woodend local, Allison Hilton has recently been appointed General Manager at The Bentinck. This year The Bentinck celebrates its 70th year, having been constructed in 1939 as a convalescent home. The property now operates as a boutique conference and event centre.

Allison is thrilled to join the dedicated team of event professionals and is committed to revitalising the property and the business. She returns to Woodend after a long absence, boasting a diverse background in hospitality and event management at a national and international level. "Its a nice change of pace and a delightful place to come to work every day.

We have had a number of enquiries regarding our restaurant and I can confirm that while there is no immediate plan to re-open on a regular basis, we do welcome group bookings for our private function rooms. I hope that many more people from our community will take the opportunity to enjoy this wonderful venue".

Submitted by WPC group



Frank & Rose Gorlitz
Open 7 Days
8am till late
breakfast, lunch & dinner

For Bookings
Ph/Fax 5427 4447
Mobile 0488 423 537
"Where Lovers of Food Eat"

Campaspe Country House

Restaurant Opening Hours
Breakfast - Saturday & Sunday 8am - 10am
Lunch - Saturday & Sunday 12pm - 2pm
Dinner - Friday & Saturday 6.30pm - 8pm

Degustation Dinner with Balgownie Estate
Saturday 22nd August @ 7pm
A superb menu matched with a selection of excellent wines
5 courses @ \$130 pp

Call our reservations team for more information or to make a booking

Goldies Lane Woodend Victoria
Telephone: 5427 2273
Email: reservations@campaspehouse.com.au | Web: www.campaspehouse.com.au



NOAH'S INN TYLDEN

Noah's Inn Tylden
43 Trentham Road
Tylden 3444
Ph: 03 5424 8119

OPEN 7 DAYS **DINNER FRIDAY AND SATURDAY NIGHTS**



MOUNT MACEDON WINERY

winter at the winery
cosy cellar door
hot hearty soup/pizza
easy and relaxed

open Saturday & Sunday 11am-5pm
433 Bawden (Douglas) Road, Woodend / Mt Macedon
www.mountmacedonwinery.com.au
5427 2735

Not Just Fudge

126 High Street, Woodend

Home-made Fudge,
Natural Ice Cream, Coffee, Tea, Herbal Tea, Milk &
Thick Shakes, Cakes, Sandwiches,
Freshly Squeezed Fruit & Vegetable Juices

Ph: 5427 2210
Fax: 5427 2880



Cafe Colenso
Fabulous coffee
Breakfast-brunch-lunch
Freshly baked cakes and bread
Fully Licensed & BYO

Now open Wednesday to Sunday 8.30 - 4.30
In the garden behind Macedon Ranges Florist

42 Anslow St, Woodend Phone 5427 2007

HOLGATE'S BAR & RESTAURANT



Microbrewery Hotel with cosy open fires, stained glass windows and friendly atmosphere. Award winning local beer. Delicious meals including house-made bread, pasta and desserts. Function room and stylish accommodation now available.

Open for Lunch Tues-Sun. Open for Dinner 7 Days

79 High Street, Woodend
Ph 03 5427 2510

Eating Out, In & Around Woodend



Bistro

Open 7 days lunch & Dinner
Daily Blackboard Specials
Open Fires

Bar

Counter meals daily
Fridays Tradesmans Lunch-\$14 pot & parma
TAB & Sky Channel

Specials

***Tuesday Locals Day** menu \$17.50
with glass house wine, lunch & dinner.
***Pensioner & Seniors** card holder Lunch menu
from \$12.50 Monday to Thursday (Lunch only)

Drive Through Bottle Shop

Open 7 days

Music Sundays

From 2.30pm, ring for information

Bookings 5427 2721

67 High Street, Woodend

www.vicwoodend.com.au

info@vicwoodend.com.au

* FAB FOOD
* FUNCTIONS & CATERING
BY ARRANGEMENT
Bookings Essential
BYO wine only
Light Snacks Mondays
Free entry for
Macedon Ranges residents

Tel: 5427 0295

Large range of Australian Gifts

**Hanging
Rock
Café &
Country
House**

Cellar to Glass @ 101

101 Mollison St. Kyneton P: 5422 1355

Breakfast & Lunch: Mon-Sat from 8am
Dinner: Tuesday and Thursday from 6p.m.

Tues: Locals Night- 2 Courses @ \$25 p.p.
(includes glass of wine/beer)

Hosts: Andrea Donaldson & George Murphy

GISBORNE PEAK WINES



Short Road, Gisborne South

**Wonderful wines &
wood-fired pizzas**

Casual, fun & friendly. All weather venue

Tel 5428 2228
www.gisbornepeakwines.com.au



Kyneton Ridge Estate
MACEDON RANGES

Open Weekends
tastings • pizza • coffee

Winter Christmas Lunch
August 7th Bookings preferred
**Winery available for
day Seminars**

Phone: 5422 7377
Mobile: 0409 017 310
Kyneton Ridge Estate
517 Blackhill Road, Kyneton
enter via Halloran's Lane
www.kynetonridge.com.au

W.A.G. on Wheels

A small group of keen plein air painters from the Woodend Art Group (WAG) have called themselves WAG On Wheels, as plein air is all about driving to the various beauty spots and places of interest around the area to enjoy painting in the great outdoors. As we all know from living in the Macedon Ranges we have an abundance of beauty all around us, but the experience is heightened when you engage with the environment through artistic sensibilities. Pamela Simmons, Bobbie Ireland, Sue Lanchester, Chris Turner, John York and Marian Alexopoulos have been painting together en plein air for at least five years on a regular basis and have decided to celebrate their liaison by holding an exhibition, called "Painting Companions". This exhibition will be on show for the month of August at The Gallery, 684 Mt. Macedon Rd, Mt Macedon which is next to the Trading Post and opens from 10 till 4 each day except Wednesday and Thursday. You can meet the artists at the official opening which takes place on Saturday 1st August at 2pm.

RedBeard Historic Bakery

Cafe open 8 am to 5 pm
Tuesday to Sunday and public holidays

Visit www.redbeardbakery.com.au

for info about:

Next music feast night: Sat 8 Aug, Women of Note

Next baking workshops: 16 Aug, 6 Sept, see web for details

our products – organic, local and seasonal ingredients

our 120-year-old Scotch oven

retail outlets and farmers markets in Central Victoria

sourdough baking workshops



Winner 2008 Hepburn Tourism
Award – Food and Hospitality

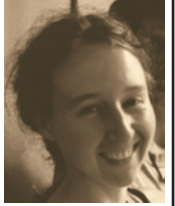
38A High St Trentham
Tel. 03 5424 1002

NORTH CENTRAL ACUPUNCTURE & CHINESE MEDICINE

仁
心
仁
術

Gina Pilven

BaHSc: Chinese Medicine
Acupuncturist
Chinese Herbalist
Health Rebates Apply*



Westpac Bank Building
11/75 High Street, Woodend

0405 467 418



**MACEDON VIEWS
RESTAURANT**
built by locals for locals

A la Carte Menu
Sunday Dinner to
Thursday Lunch

Gourmet Buffet
Thursday Dinner to
Sunday Lunch

Present this ad
to receive one
FREE coffee!

652 Black Forest Drive, Macedon Ph 5426 4033



All news items, articles and community
news columns must be received by 15th
of each month.

LIMESTONE SCULPTURE CLASSES

Taking bookings now.
Wednesday & Thursday

Contact Dawn

0411 025 445 or 54 272 121
muddyduckdesign@optusnet.com.au

Cuttings.

culinary & botanica

- regional gourmet produce and hampering
- eclectic furniture and homewares
- unique cookware and servery
- rustic garden art and organic seeds

120 Main Street, Romsey
Ph: 5429 3636
Open Tuesday - Sunday

This page is proudly sponsored by the 19th HOLE SHOPPING CENTRE

Upcoming Events & Meetings

August

- 9 Russell Morris band at Lawson Lodge
- 8 Climate Change Forum 12.45-5.30pm Ballarat
- 8 St Ambrose Disco Fever Dance 5427 1285
- 14 Newham Landcare AGM 7.30pm info@newham.vic.au
- 14 R.S.L Women's Auxiliary Dinner & Karaoke
- 16 Woodend Scout Group Indoor Market/Fete
- 19 Rotary Club Careers Night 7pm Woodend Community Centre
- 22 MRSC & Beyond Blue Evening for Men 8pm
- 22 Woodend Playgroup Trivia Night - Emma 5427 0591
- 29 Heskett PS Annual Supper Dance with Darryl Cotton & Band 5427 0330

September

- 2 R.S.L Quarterly General Meeting 7.30pm
- 3 Woodend Auxiliary KDHS Special Lunch
- 6 Paramoor Farm Fayre www.paparamoor.com.au
- 10 Woodend Auxiliary KDHS AGM
- 11-14 Buda-Fest, Castlemaine
- 3rd Sunday Woodend Lions Club Sunday Market

October

- 4 Daylight Savings starts 2am
- 14 National Ride to Work Day www.bv.com.au
- 25 Woodend Teddy Bear Show, St Ambrose Hall

December

- 4 Newham Hall Grand Opening 11.30am
- 5 WOOMBA festival

PLEASE SEND US YOUR FUTURE DATES

COMMUNITY GROUPS CONTACT DETAILS

Australian Breastfeeding Association, Heather 5427 2398
 Cobaw Thursday Walking Group 5427 3340
 Daylight Masonic Lodge, 5427 2480
 1st Woodend Scout Group, 5427 3788 Sarah
 Friends of Macedon Ranges Library, Chris/Bill 5427 2469
 Garden Club 5422 6062 / 5427 3340
 Living Word Christian Church 5429 6327
 Historical Society, Courthouse, 5427 2523
 Macedon Ranges & District Motor Club, 10 Webb Cres, New Gisborne 1st Wednesday each month 8pm
 Macedon Ranges Animal Aid, Buffalo Sports Stadium, 5427 1752
 Macedon Ranges Bridge Club, 5427 4440
 Macedon Ranges Families of Children with Disabilities Support Group, 5427 3365
 Macedon Ranges Residents Assc. 5427 1481 or 5427 2651
 Macedon Ranges Communicators (ITC), 5427 2669
 Macedon Ranges Photographic Society, 1st Tues of month, Ron Mathews 5427 3284
 Macedon Ranges Social Club (activities for singles over 35) phone 9740 5517 or 9744 2697
 Neurological Support Group "Contacts", Woodend Community Centre
 Parents & Carers of Children with Special Needs, Woodend Community Centre
 Probus, 5427 2003
 R.S.L., Anslow Street 5427 3122
 Red Cross, 5427 1260
 Rotary Club of Woodend, meetings weekly at Vic Hotel Thursdays 6.45pm, Kai 5427 1029
 St. Mary's Guild, 11am, 4th Wednesday of month
 St. Mary's Street Stall, 9-12 noon outside Woodend Newsagency (2nd Sat of the month)
 Woodend & Five Mile Creek Landcare Group, Jo 5427 1909 or Doug 5427 0666, 3rd Tues Meeting, 4th Sunday Working Bee
 Woodend Angling Club, RSL Hall, 5427 2395
 Woodend Art Group, Railway Station, 5422 6172 or 5427 1659
 Woodend Business & Tourism Association, Cori 5427 3434, 2nd Tues of month (BATA)
 Woodend Lions Club, Meetings 2nd/4th Wednesday each month, ph Maureen Dougherty 5427 4949
 Woodend Model Railway Club, Buffalo Stadium
 Woodend Pony Club, 5427 2793
 Woodend Senior Citizens Club, Comm. Centre
 Woodend SES Training Nights, Urquhart St
 Woodend Winter Arts Festival Inc., Jacky 5427 1560
CLUBS: PLEASE KEEP THESE DETAILS UP TO DATE



Ian Marks Liquor 5427 3961
Blue Orange Concepts: homeware 5427 4500
Woodend Pizza & Pasta 5427 3777
Coles Supermarket 5427 2377
Collier Office & Business Assist and Woodend Copy Centre 5427 3092
Pets Haven 5427 3603
Mitre-10 Woodend Hardware 5427 2314
BP Woodend 5427 2248
Target Country 5427 4366
Macedon Ranges Travel Services 5427 4777
Kosmac & Clemens: optometrists 5427 4577
Woodend Cycles 5427 2662
Salvation Army Family Store 5427 4421
Loose Change Bargains 5427 4466
Bodywise Underwear 1300 66 17 66
Australia Post 5427 2600
Inner Artist 5427 4455
The Spa Beauty Therapy Centre 5427 3322
HIGH STREET SHOPS
Color Me Cooper: clothing/gifts 5427 1454
Chelleon For Hair 5427 3246
Not Just Fudge 5427 2210
RT Edgar Real Estate 5427 1222
Woodend Bakery Cafe 5427 3434

WOODEND SADDLERY

PH. 5427 2399

Winter Rugs in Stock

Including Macs Cool Heat Rug

Opening hours Mon - Fri 9am to 4.30pm

61 Urquhart Street Woodend Vic 3442

Chiropractor – Mark Brown

- 20 years in Practice.
- Upstairs at Westpac Bank, 75 High Street
- Muscle realign and stretch techniques
- Gentle spinal adjustments
- Shoulder, elbow, wrist, knee, foot problems
- Headaches, migraines, athsma, neuralgia, digestive problems



Phone 5427 1456 or 0407 526 403

Total
Financial
Solutions
Australia



*Helping you save
for a
“Rainy Day”*

Bob Nixon

B.Com., Dip.Ed., Dip.A.I.I., Cert. IV Fin. Plng., F.A.F.A.

Authorised Representative,
Total Financial Solutions Australia Pty Ltd
ABN 58 003 636 968 AFSL No.246545.

Shop 10, 34a Hamilton Street. Gisborne Vic 3437

Ph: 03 5428 0123

Fax: 03 5420 7710

E: bobnixon@netcon.net.au

W: www.bobnixon.com.au

All news items, articles and community news columns must be received by 15th of each month.

AGRICULTURAL CONTRACTOR



PHILIP BEATTIE PTY LTD

Located in the Macedon Ranges and servicing a wide surrounding area, Philip Beattie Pty Ltd can provide you with the latest equipment and operators for you to produce the best in

- CROPPING
- SPREADING/FERTILISING
- PASTURE RENOVATIONS
- ZERO TILL RENOVATIONS

Now with the added feature of an Outback GPS Guidance System to enable full and accurate mapping of your paddocks

At Philip Beattie Pty Ltd we can also provide you with all your hay making requirements supplying

- Mowing
- Raking
- Teddering
- Large Square Bales
- Round Bales
- Small Square Bales
- Silage Wrapping

Contact:

Philip Beattie Pty Ltd
45 Millers Lane
Newham Vic 3442

Ph/Fax (03) 5427 0702 Mobile 0419 573 226
psbeattie@bigpond.com

Let's Break the Silence

Macedon Ranges Shire Council in association with beyondblue: the national depression initiative, One in Five and the Sunrise Foundation, are proud to announce the first “Let's Break the Silence” depression awareness evening aimed at men 16 – 45 at the Town Hall – Kyneton (129 Mollison Street, 5 minutes walk from Kyneton Station) on Saturday 22nd of August 2009 at 8pm.

Depression and Mental Illness touches more people than all of us often acknowledge. Our aim is to make the community more aware that one in five people suffer from depression or a mental illness and we as a community can make a difference by making it easier for people to get the help they need and supporting them along the way.

Let's Break the Silence will have several key speakers on the night including Nathan Thompson ex North Melbourne, live music from Tim Rogers from You am I, Damian Callinan with his comedy show Spaznuts, The Dead Salesmen, finger food and many more surprises will ensure everyone who attends has a great night. Plus heaps of fabulous give –a – ways. Tickets cost \$30 and the money raised will go towards the three sponsors. Patrons can purchase tickets through the Town Hall – Kyneton Box Office 1300 88 88 02 or over the counter at any Shire customer Service centres (Kyneton, Woodend, Romsey & Gisborne).

ADVANCED
**EQUINE
DENTISTRY**



Dr Shannon Lee BVSc

0418 598 621

we
come to
YOU!

Winner 2009 Macedon Ranges Business
Excellence Awards for Young Business Person &
Professional Services categories

Mobile services for Macedon Ranges

www.advancedequinedentistry.com.au

Saving Grace

Pre-loved Designer Fashion

50% SALE

27th – 30th AUGUST

OPEN 10am – 4pm

Thurs, Fri, Sat & Sun

In the Garden behind

42 Anslow St Woodend

(next to Café Colenso)



Macedon Ranges Rural Australians for Refugees (MRRAR)

Our Sausage Sizzle and Fund Raiser held on 20th June - World Refugees Day - was a great success, and for this we thank all the generous people of Woodend who bought a sausage, added food to their shopping list for donation to the Asylum Seeker Resource Centre, and donated money. The folk down at the Centre in Melbourne were overwhelmed by the generosity shown by Macedon Ranges. The ASRC Foodbank provides food (and hot lunches) to refugees who have been granted asylum but as yet are unable or not allowed to earn any money. The Food Collection by MRRAR is ongoing throughout the year, and various schools and other organisations make use of a regular drop-off and pick-up system throughout the year. Anyone is welcome to visit the ASRC in West Melbourne (located at 12 Batman Street), to have a tour, a chat, and even enjoy a good meal. Thank you again to all our generous donors.

Submitted by Ann Johns (5427 4332)



WOODEND & DISTRICT PODIATRY

John F. Shapland

Resident Practitioner

Reg. Department Veteran's Affairs

5427 2064

Business and After Hours

1895 Mt. Macedon Rd., Woodend

Woodend Neighbourhood Centre

We are now well into the winter term and there is lots happening here at the Woodend Neighbourhood Centre for you to become involved with.

- For all those creative people in the area we are offering
- silversmith jewellery workshops where you can make a silver or gold ring or pendant over 4 weeks
- coloured glass jewellery – make 3 professional pendants in one session
- mosaic workshops – design & create a mosaic platter
- Dram a classes for children and Acting for youth
- Wire & bead jewellery making
- Introduction to permaculture

If you are considering self improvement or career options then any of these might suit you

- Personal Centred Counselling
- Build your self confidence under the guidance of Joy Black
- It all starts with you – is a course designed to guide you to work through where you are and where you want to be, have a positive outlook on life and take responsibility for your future

Winter is a great time to get motivated and active with one of our many day or evening classes including walking, cycling, Pilates, Yoga, Tai Chi, Qigong or Belly Dancing.

It is tax time again and we have a volunteer trained by the Australian Tax Office who is willing to assist people on a low income with their tax returns. Call us to make an appointment.

We are open 5 days a week during school hours (and until 5pm on Wednesdays). We have Internet access, printing and photocopying services available so pop in and see us soon.

Sarah Campbell, WNC, 47 Forest St, Woodend
5427 1845 www.wnci.websyte.com.au



CONTINUING VETERINARY EXCELLENCE

Our commitment to you is to provide the highest quality veterinary services in medicine, surgery, health and wellbeing and preventative healthcare in a friendly, personalised & caring environment.

Tony's Practice wish to welcome
DR NATASHA PETTINGILL to the practice.

24 Hour Emergency Care

5427 4344

12 Anslow Street Woodend



Grantra

HOME IMPROVEMENTS

Specialising in Bathroom Renovations

PO Box 736, Woodend 3442

0418 175 877

www.grantrahomeimprovements.com.au





BUDA

Historic HOME & GARDEN

Friday 11th September 7pm Buda-Fest Opening
Sat/Sun Presentations & Workshops

Enquiries: 42 Hunter Street, Castlemaine
Ph: 5472 1032

admin@budacastlemaine.org
www.budacastlemaine.org

Buda-Fest

11-14 September

Rethinking Gardening

- as a personal response to climate change
- so more of the food we consume reduces carbon outputs instead of adding to them
- to enhance the energy efficiency of our domestic environments
- for health, wellbeing and enjoyment.

Come along to Buda-Fest for a huge array of guest speakers, presentations and workshops. A weekend of fun, learning how to make the most of your garden using sustainable practices.

Visit www.budacastlemaine.org for detailed information.

Friday 11th 7.00pm

BudaFest Opening

Saturday 12th & Sunday 13th

Presentations, workshops

**There's no substitute
for local knowledge.
And we've been
locals since, well,
forever.**

We first opened our doors in Woodend in 1927. Over the years we've come to understand the needs of locals, and have the experience and knowledge to help you with all your financial needs.

- Home loans and investment home loans
- Personal loans
- Credit cards
- Business loans and equipment finance
- Transaction and savings accounts
- Home insurance (including building, contents and personal valuables cover)
- Car insurance
- Superannuation, managed funds and wealth creation
- Life insurance and income protection

Simply call **03 5427 1777**. Or drop in and see us at 82 High Street. We're right here where we've always been.

commbank.com.au

Commonwealth Bank of Australia ABN 48 123 123 124 CBALA0000 00/00

Determined to be different

Lachlan Fleming



CARPENTRY

REGISTERED BUILDING PRACTITIONER

0401 499 898

EXTENSIONS RENOVATIONS
ALTERATIONS

Kirsty Nuttall

**MACEDON RANGES
PICTURE FRAMING SERVICE**

By appointment only
Phone/Fax: 5427 3511
Mobile: 0417 337 857

Rotary Guest Speaker

The Rotary Club of Woodend presents The Hon Alastair Nicholson AO RFD QC, Former Chief Justice of the Australian Family Law Court. Patron – "Operation Cleft", to talk about Operation Cleft.

The talk will be on August 6th, 6.30pm for 7.00pm at The Victoria Hotel, Woodend

Please RSVP to Secretary Charles Bender on 0409 439 046 or benderfam@bigpond.com

**CHINKA STEEL CONVEYANCING
(HEP Steel, Solicitor)**

**FOR ALL YOUR
PROPERTY SALES AND PURCHASES**

**RING CHINKA ON
03 5427 2477**

74 HIGH STREET WOODEND 3442



**Macedon Ranges
Equine Vets**

- **Full equine services including x-rays, ultrasound and endoscopy**
- **Foaling down**
- **Microchipping**
- **Dentistry**
- **Lameness**

0400 449 990 03 5428 1888

Sand | Soil | Mulch | Pots | Pavers | Plants
Water features | Fire wood | Wine barrels
Hire Equipment | Synthetic turf | Sleepers

42 Nursery Road Macedon 3440 Victoria
 Email hello@nrgsupplies.com.au
 Telephone 03 5426 2400 | Facsimile 03 5426 4972

NURSERY ROAD
 GARDEN SUPPLIES

General open hours Monday–Friday 7.30–5pm,
 Saturday–Sunday 9–5pm. Arrangements outside
 these hours can be made.



LEADING HAND CARPENTRY
 COMPLETE CARPENTRY SOLUTIONS

Call 0439 360 896 or email
shannon@lhcarpentry.com.au

REGISTERED Building Practitioner



\$27,500 for Living Well – Ageing Better

Macedon Ranges Shire Council, in partnership with five other leading health service agencies, have been working together to develop a multi-agency positive ageing strategy for the Macedon Ranges Shire.

At a special board presentation meeting held on 23 July in Gisborne, it was announced that the Department of Human Services will provide one-off funding of \$27,500 to assist with further development and implementation of the strategy.

Earlier this year, extensive community consultation sessions were held throughout the shire with more than 200 people attending to discuss the challenges and opportunities available to assist in the planning for, and development of, age friendly communities in the Macedon Ranges.


A range of ideas and emerging themes were identified during these sessions and were further explored at a series of forums, known as ‘World Café Forums’ held across the shire.

We all know someone who is growing older and wants to live and age well in their local community. Older people have strengths that can be developed that lead to better and healthier lifestyles and more than 350 people have registered their interest to be a part of this project that will provide such opportunities for older people in the shire.

Ageing well involves many factors including housing, transport, health services and the community you live in.

The five local health service agencies participating in the development of this strategy are Kyneton District Health Service, Macedon Ranges Health Service, Cobaw Community Health and the Central Highlands General Practise Network.

To register your interest or to find out more, contact Brent Allan, Manager Community Services, Macedon Ranges Shire Council on 5422 0261.



- Grid connected domestic solar systems
- Stand-alone solar and wind generator power systems
- Farm and residential solar gate openers
- Solar bore, dam and tank pumps
- Garden and landscape lighting
- Telephone/data cabling

Contact: **Ray** Telephone: **5426 2574** Mobile: **0416 085 276**

TITAB T08698 – BCSE P2026

Newham Primary School

The students are back from their holiday and are now in the new school building. The portables were removed from the site, during the first week back, causing great excitement as the students were allowed to watch from inside the new classrooms.

Our new music room, which was scheduled to commence building in August, has been postponed due to inclement weather and the need for additional funds. A Government grant to assist with the building was a very welcome addition, however we still need additional funds. To assist with the building we are currently selling “name bricks” - forms can be obtained directly from the school or by phoning Marnie on 5427 4668. Bricks will be sold at \$40 each and \$30 for each additional brick. Names are engraved into the brick to ensure a lasting tribute.

Our annual art exhibition and sale will again be held in October - we would like to extend this open invitation for artists to contact the school on 5427 0235 or Marnie on 5427 4668 to obtain an entry form. This year’s focus will be the student’s photography, with mixed media from local artists.



1300 737 146

Ultra-longevity & Success

- Quit Cigarettes (In 60 Min) & Addictions
- Lose Weight for Life – Manage Pain & Trauma
- Address Anxiety – Phobias – Behaviour Problems
- Achieve Wellness – Energy & Focus

CHILDREN ESPECIALLY WELCOME

Introduction Massage \$45

St Mary’s Guild

President and all the members of the St Mary’s guild wish to thank all who have come along to our knitting square luncheons also, our ladies who have sewn up the squares to make blankets for homeless. The project started in 2005 when the Salvation Army asked local people to knit for the homeless. St Mary’s guild took up the idea to hold a luncheon in our hall in the middle of winter in 2005. we had a great day with lovely music, a needle and a chat, to see who would knit the first square. Since we have started we have given the Salvation Army about 100 blankets, also we have given them jumpers, beanies and scarfs. Thankyou to all who have helped over the years, all members hope we can have the next square luncheon in our new hall.

Submitted by Norma Richardson

TRIPLE



DRIVER TRAINING

Accredited Certificate III and IV Instructor
Servicing Macedon Ranges and Surrounding Areas

Ph. Laurie

5427 1192
0419 005 185

Ashbourne Kills Gorse

A considerable amount of gorse has turned to dust in recent years after a succession of state government grants to the Ashbourne Landcare Group to assist landholders in the work. Funds are administered by the North Central Catchment Management Authority.

Ashbourne was divided into five target areas with a gorse task force from the DPI supervising landholders when necessary. The final report on stage five has just been completed but the group hopes that landholders will continue to tackle their gorse as it will reappear indefinitely.

Submitted by Jane Holth

All news items, articles and community news columns must be received by 15th of each month.

ZUMSTEIN



**DESIGNER AND MAKER OF FINE
FURNITURE AND JOINERY**

“Third generation woodwork really shows”



Zumstein Pty Ltd
Factory 1/32 Brooke Street
WOODEND VIC 3442
Ph 03 5427 4579
Fax 03 5427 2284
Mobile 0412 138 364

Congratulations Woodend Scout Group

Winter was on our doorstep and with it came the much awaited Woodend Winter Arts Festival (WWAF) known to invigorate our minds, stir our hearts with beautiful sights and sounds and fill our delightful town with many and varied guests.

We were impressed to see our 1st Woodend Scout Group (under the capable guidance of Leisa Macartney) take on the initiative to entice locals and guests alike to dine on homemade, nutritious and tasty fare at the Log Cabin Café. This was an excellent opportunity to promote the scouting movement and for all involved to raise some hard earned funds in an innovative manner.

The 1st Woodend Scout Group is to be congratulated for encouraging their youth to take on the responsibility of stepping outside of their comfort zone; to cook, clean, set-up, hand-out advertising flyers, serve customers, wait on tables, wash & dry dishes, bring in wood etc and in doing so to engage with all manner of guests and to be outstanding ambassadors for Woodend.

The Log Cabin Café raised funds in excess of \$2,000 (before expenses) and the proceeds of this venture will help assist three leaders, fourteen scouts and one venturer to participate in the January 2010 Sydney Jamboree.

This innovative fundraising initiative complimented the High Street Traders' efforts to welcome and manage the inundation of hungry tourists to Woodend over this now well-recognised and highly successful WWAF tourism & arts event, held each Queen's Birthday long weekend in June.

For those who did not venture into the inaugural Log Cabin Café, be sure to mark it in your diaries as a 'foodies event' for June 2010, as the food was hot and absolutely delicious, the atmosphere warm and inviting, with the added ambience of relaxing beside the slow combustion wood fire.

To the generous traders who donated goods and services and those who worked so hard over this three day event to enable Woodend to continue supporting local youth and community groups, congratulations!

Submitted by Impressed Woodend Residents

Woodend Visitor Information Centre

High Street Woodend

Ph 1800 244 711

**KYNETON
EQUIPMENT & PARTY
HIRE**

FOR ALL YOUR HIRING NEEDS

8-12 BEAUCHAMP ST PHONE (03) 5422 2311
KYNETON VIC 3444 FAX (03) 5422 2930

Email: kynhire@bigpond.net.au
website: www.kynetonhire.com.au

Callaway Constructions

Your Provincial Victorian Builder

***NEW HOMES *EXTENSIONS**

***RENOVATIONS**

JAMIE ZOCH ☐ PH: 0408 221 007



News From the R.S.L Women's Auxiliary

The Christmas in July dinner held on the 3rd of July was a great success. We would like to thank all who attended and enjoyed a lovely Christmas dinner. It was a fun night with the karaoke girls Sharon and Judy providing a night of traditional Christmas songs and plenty of dance music as well. Santa was in fine form with lots of Ho, Ho's ably supported by his little helper Stacey is our Cook's daughter and she did a wonderful job all night.

Marnie the photographer from *The Guardian* also worked the crowd and we hope to see the photos soon.

Our next dinner and karaoke night will be held on Friday 14th of August, so if you are looking for a good night out with lots of fun come along and support your R.S.L. The Bar can supply you with the cheapest drinks in town, our meals are excellent and you will be made most welcome. So why not give it a try. Bookings are required so, book early.

At present great doings are going on. Our kitchen is being renovated and the boys are doing a splendid job. Thanks to Reg, Barry, Eric, Gene, Ian (the tiler) our Ian, Dave and of course our Auxiliary members who helped clean out the kitchen so the boys could do the renovations. Natural gas is going to be connected also and Bill G (we can't forget our Bill) who does so much for the club in so many ways. Thankyou to a great team.

Our auxiliary is still looking for new members. Our attendance at meetings of late have been small as unfortunately a few of our ladies are on the sick list. Barbara, Margaret w, Stella, Marie, Lola and Diane (who broke her arm). We miss you all.

Our first Wood Raffle starting next week will hopefully go well. It's the weather for wood, so we hope to see it well patronised.

We have many more ideas for fundraising as soon as the kitchen is done, so watch the shops for posters and our newsletters.

Submitted by Betty Barned

Kyneton Physiotherapy

ROBERT ROUSE

B. App. Sc. (Physio) Member A. Physio. Assoc.

Move Well. Stay Well!

Registered for Comcare, TAC, W/Cover, Vet. Affairs
NO REFERRAL NECESSARY

74 High St., (Corner New St.,) Kyneton

20 years on High Street! 5422 2290

You are invited to the 4th Woodend Teddy Bear Show

Sunday, October 25th

10am - 4pm

Win a date
with
Cuddles!

**St Ambrose Hall
Templeton Street, Woodend**

*** Stalls * Refreshments * Raffles ***

A beary family friendly event!

**Featuring a teddy bear making competition
for professionals and amateurs.**

WOODEND SELF STORAGE



- Store your business documents, stocks or furniture
- 7 day access
- 33 individual sheds
- Affordable prices
- Insurance available

For any enquiries
please contact

**Leonie or Dennis Barker
on 5427 4175**

R.S.L Report

Work has continued apace on renovation to the R.S.L hall, Kitchen and providing tea and coffee making facilities in the Main Hall. The latter being a particular hobby horse of mine. A team of local tradies led by our Senior Vice President Bill Gilchrist are creating a state of the art food preparation facility where our chefs will further improve their cooking standards, if that is possible.

The application by Braemar College for a new campus off Montgomery Lane will improve the safety and education standards of the children of Macedon Ranges. However on the Woodend Avenue of Honour each Oak tree is dedicated to a 1st World War Service person from Woodend and Newham and it is a beautiful, moving and environmental tribute to those people which everyone can appreciate. We are taking action to ensure that all trees aren't harmed. The submission by Braemar College appears to support this aim. Welfare Officer Barry Meldrum continues to assist those with welfare issues and is at the clubrooms every Tuesday from 9am to 12pm. Please pop in and see him, for urgent matters ring 0428989077. Members please note in your diary that on Wednesday the 2nd of September at 7:30pm we will be holding our quarterly General Meeting at the Hall. The Club needs your input so we can better your needs.

Submitted by Eric Read

All news items, articles and community news columns must be received by 15th of each month.

Want all the benefits of Gas? Trust a local!



Elgas is a local business, run by local people offering LPG for:

Your Home

- Heating
- Hot Water
- Cooking
- Swap n Go

Your Business

- Forklift
- Commercial
- Industrial

Safe, reliable tanker deliveries also available!



Woodend Produce
31 Brooke Street
Woodend VIC 3442

5427 2753

131 161

ELGAS

BodyMinding
alexander technique: an education for living well.

Alexander Technique

Reduce, manage or eliminate **stress headaches, muscle and joint pain**. The Alexander Technique addresses the underlying problems and puts you back into control for yourself.

Margaret McGill has been teaching Alexander Technique for more than 20 years.

Contact **Margaret on 5428 6461** for further information.

Senior Citizens

There is a general meeting on the first Friday of the month on 7/08/09. On Friday afternoons cards will be played, cards start at 1:30pm also on the first Fridays we hold our fun afternoon 1:30pm we start, this is usually a fun afternoon, we do have fun and a lot of laughs. Tuesday is Bingo at 1:30pm all seniors are welcome to the cards and bingo come and enjoy the company and a cuppa. We also have lovely bus trips.

Submitted by Norma Richardson

Woodend Auxiliary Kyneton District Health Service

Our Auxiliary announces TWO events for September :

First: Thursday September 3rd, a special Champagne and Sandwich Lunch, which will include demonstrations and sales by several craftspeople.

It starts at 12.30 p.m, the entrance fee is \$10.00, and there will be several lucky seat prizes to be won.

Second: Our Annual General Meeting, to be held on Thursday September 10th. The CEO of the KDHS will tell us what's happening at the hospital, and what use the funds we raise are put to. Time. 1.30 p.m.

WARNER'S JEWELLERS
EST. 1912 ~ 4th Generation Jewellers

97 High Street, Woodend 3442

Tel: 5427 1573

Manufacturing Jewellers and Diamond Ring Makers

Stocking: Portmeirion, Whitehall, Queens, Pimpernel, Royal Doulton, Cherished Teddies, Royal Sengalor.

Paul Groves

Mobile 0414 928 491

Phone 5427 2171

Computer Sales, Repairs & Consulting

Home and Office Networking
Onsite Repairs and Maintenance
New Computer Systems

paul@pcweirdness.com

Local Youth Projects

Woodend Rotary Club can offer local youths many enriching experiences outlined below. Contact New Generations Director – John Green on 5427 3909.

Leadership Potential?

Woodend Rotary is calling for applications from local 18–25 YO's to attend the Rotary Youth Leadership Award (RYLA) camp at Wonga Park on Nov 28th – Dec 4th. Contact New Generations Director – John Green on 5427 3909.

Budding Scientists?

Woodend Rotary is calling for applications for budding local scientists to attend the 3 day National Siemens Science Forum in Melbourne Universities in November. No selection process – just apply through Woodend Rotary. Contact John Green on 5427 3909.

Budding Performing Artist?

Are you a 16–19 YO who has talent as a Dancer? Singer? Musician? Actor? Woodend Rotary can assist you in the national “Storm the Stage” initiative. Finals in December in WA. Contact John Green on 5427 3909.

Studying overseas?

Youth Exchange – interested in studying overseas for 12 months? Woodend Rotary Club can help put you in touch. Contact John Green on 5427 3909.

4 Week Gallipoli Student Exchange

“Gallipoli Student Exchange Program” – open to YR 11 students - interested in spending 4 weeks living with a Turkish Family, attending school and participating in ANZAC day commemorations? Contact John Green on 5427 3909.

Budding Sailors?

Interested in sailing as a crew on the Australia Day Regatta? The Skandia Geelong Week Rotary Youth Squad wants to hear from country youth. Contact John Green on 5427 3909.

Enhance your Life Skills

Calling 14 – 17 YO's for the Rotary Youth Program of Enrichment (RYPEN) Camp. Involves communication of ideas, problems, and social experiences. Fun learning, team building & life skill enhancing. Contact John Green, Woodend Rotary, on 5427 3909. Applications now open, but don't delay.

Model United Nations Assembly (MUNA)

Want to see what it is like being a representative of a country not of your choosing? Past local youths have had an absolute ball with this programme. Participate in “United Nations” debates. Contact John Green, Woodend Rotary, on 5427 3909.

Got a Troubled Youth?

Put them on the right track - the “Kokoda Track”. Rotary Kokoda Project. Contact Woodend President Eb Friedrich 0438 537 139.

Eyes Wide Open

An exciting Rotary programme facilitating opportunities for young adults to spend 2 – 4 weeks working on Rotary humanitarian programs in developing regions. Requires own funding. Contact Woodend President Eb Friedrich 0438 537 139.

Wollangarra

A Victorian based camp for teenagers. Ever thought what it would be like to live without electricity, mobile phones, and computer? Probably not, but you can survive & indeed thrive. To even get there you need to cross a river in a flying fox – no roads. Contact Woodend President Eb Friedrich 0438 537 139.

FOR ALL YOUR REAL ESTATE NEEDS

Denis O'Meara Dip.Ag.Sc
Sales Consultant

Raine & Horne Woodend

Shop 3a, 81 High Street
Woodend, Vic 3442

Telephone 03 5427 3200

Mobile 0428 554 102

Fax 03 5427 3022

Email rhwoodend@bigpond.com



Raine & Horne

rh.com.au
we'll look after you®

Woodend Red Cross

The Annual Red Cross unit was held on Thursday 9th July 2009.

Office bearers are:

President: Mrs Norma Proctor

Secretary: Mrs Victoria Marsh

Treasurer: Mrs Peg Wilson

Auditor: Mr Keith Garlick

As from the year 2010 the annual general meeting will be held in August. There will be NO meeting in August 2010.

We cordially welcome our new members and will warmly welcome any other people wishing to join us.

We wish to thank all the people of Woodend who continued to support Red Cross so regularly.

Submitted by J. Podrazil & Peg Wilson

Woodend Children's Park

Through extraordinary community and government support, 95% of funds have been raised. The project can now proceed and construction has commenced. The park is almost double the size originally envisaged. The design plans are extraordinary. This will be an inspiring park. Funds are tight and final donations are being sought to enhance the park with additional seating, sculptures, shelters, picnic tables, BBQ shelters, and extensive landscaping to complete the vision. There's also an awesome slide we would love to add but cannot fit into the current budget - can you help?

We are almost there. Woodend your park is coming!

Woodend Visitor Information Centre

Ph 1800 244 711

“Magnificent” Art MAD Gallery & Café

19 High Street, Lancefield

Tel: 5429 1432

Web: www.madgallery.com.au

Open everyday 10am – 5pm

We're proud of our coffee and promise you the best coffee around, or your money back!

Carlsruhe Community Corner

Carlsruhe Cemetery Trust

Many thanks go to the Drought Assistance Teams who carried out rabbit eradication work at the Carlsruhe Cemetery. Rabbits and the erosion associated with their burrowing have caused some of the graves to subside.

The teams also assisted with cutting and poisoning of weed species including gorse, early black wattle and briar roses. It is unfortunate that funding for these teams is no longer available.

Anyone interested in continuing this weed removal please contact the Cemetery Trust on 5422 2201.

Carlsruhe CFA

The brigade wishes to thank the Sidney Myer Foundation for the donation of a 9,000 litre water tank, pump and associated plumbing. We can now fill our tanker three times from this tank.

On Saturday 25th July, the brigade will be celebrating 50 years of service to the community by having a presentation dinner, where long service and other awards will be made – enquires to Captain Joe Fleming on 5422 2561.

Active and support volunteers are always required – contact Captain Joe Fleming for more information.

Carlsruhe Landcare Group

We are in the process of drafting a Strategic Plan and one of our aims - backup spraying of gorse in the Carlsruhe village - is already on the way to being achieved.

New members are always welcome – contact Secretary Sam Fisher on 5422 6663. Memberships are \$10 per year, per family.

Carlsruhe Upper Campaspe Development and Protection Task Force

Replacement planting of Snow Gums that have been lost during the hot summer has now almost been completed. Further planting (as part of the Carlsruhe Streetscape Project) will not proceed until sufficient rain has been received, to encourage their survival.

Weeding of the Campaspe River area on both sides of the bridge, including removal of wild Canola, is currently underway. Whilst Canola is not a noxious weed, its proliferation throughout and beyond the village area continues to be of concern, as it appears that some hybrid species are resistant to Round-Up, with plants dying off after spraying, only to re-shoot when conditions improve.

• W • O • O • D • E • N • D • SIMPLY HEALTH Sale!

SANTE NATURAL COSMETICS
up to 60% off Now \$10 each!

NATURAL INSTINCT
20% off everything

SURYA ORGANIC
HAND SANITIZER

- Certified Organic
 - Cruelty free formula with no harsh chemicals
 - Kills germs on hands, anyplace anytime
- 10% off everything
While stocks last

Shop 35A Anslow St, Woodend, 3442
Ph: (03) 5427 4237

Living Word Christian Church



Meet
EVERY SUNDAY
10am

7 Mitchell Court Romsey
6PM

Woodend Community Centre
FOR MORE INFORMATION

5429 6327

livingword@iprimus.com.au

WANT TO LISTEN TO SOME CHRISTIAN
CONTEMPORARY MUSIC AND HAVE A FEW LAUGHS?
THEN TUNE INTO 100.7 HIGHLANDS FM
EVERY MONDAY 1 @ 3PM
FOR

AT THE CROSSROADS
WITH
KATH & SNITCH

Woodend Trivia Night

Help support Woodend Playgroup by putting your thinking caps on for a fun night out.

Get some friends together and make up a table.

Loads of great prizes to be won as well as a silent auction. The night will be on the 22nd August at the Community Centre in Woodend.

Guest MC Scott Brennan Melbourne comedian from Skit house. \$15 ahead BYO food and drinks, 7 pm for a 7.30 start.

Get a group together and come and enjoy the fun for a great cause. For booking please call Emma Tel: 5427 0591.

Regular business card advertisements (90mm x 55mm) are \$41
inc GST per month - book & pay 11 months
and get 10% off.

WOODEND

COMPUTER SERVICE
 Sales - Service - Training & Help
 THE BANK - OFFICE 3 - 75 HIGH ST WOODEND
JASON JOHNSON - 0400528129
pcs@live.com.au

 **Magnetic Websites**
 Martin Beaumont
PHONE 03 5427 4478
MOBILE 0414 274 988
HTTP www.magneticwebsites.com.au
EMAIL martin@magneticwebsites.com.au
 Developing websites for the Macedon Ranges and beyond, ask how we can help you get online

 **Accountants, Advisors & Planners**
RIVERWOOD GROUP
 Office Locations:
 111 High Street, Woodend Ph: 03 5427 8000
 2/19 Bourke Street, Kilmore Ph: 03 5782 1273
 email: admin@riverwoodgroup.com.au
 website: www.riverwoodgroup.com.au

Riverwood Group can offer a *Total Financial Solutions* package for you and your family. Take a look at some of the services we provide:

Taxation
 All your taxation requirements to suit individuals and small businesses.

Investments to Create & Protect your Wealth
 Managed Funds, Indexed Funds, margin Lending and more

Planning for Retirement
 Allocated Pensions, Centrelink Benefits and Payments

Stockbroking
 Recommended lists, broking facility available, share updates

Superannuation & Rollovers
 Advice, placements, Self-Managed Super Funds and Eligible Termination Payment Advice

Other Services
 Home & Investment Loans, Business Loans and Leasing, Income Protection, Life Insurance, Professional Indemnity, Estate Planning and more.

All news items, articles and community news columns must be received by 15th of each month.

WOODEND TAXIS
 % **5427 2641**

- n Taxi Passengers
- n Verbal Message Delivery
- n Airport & Melbourne Service
- n Also Pickup & Delivery of Letters & Very Small Parcels

Betty Valli
 29 Urquhart Street, Woodend

Climate Change Forum
 If you would like to learn more about taking personal steps toward dealing with the impacts of Climate Change come along to a Climate Change Forum to be held in Ballarat this August.


Issues such as changing weather patterns, rising energy and living costs and reduced rainfall will be addressed by four eminent speakers who will provide expert knowledge and information from a scientific and social perspective. Information stands at the Forum will provide simple tools and ideas for making changes at home and for taking community action to deal with Climate Change impacts.

Saturday August 8th, 12.45 pm to 5.30 pm
 Cost: Adults \$15.00, students and concession: \$10.00
 Venue: Wendouree Centre for Performing Arts, Howitt Street, Ballarat. Tickets are available by calling 5338 0980.

For Sale
Moving to warmer climate!

Rank Arena fridge & freezer	\$100
Single bed wooden frame, complete with clean mattress and linen	\$100
Wardrobe pine. 3 doors plus drawers and mirror	\$120
Guitar. Nylon string acoustic	\$80
2 Fire extinguishers	\$60 ea
Divan bed double size, good con'd	\$150
Books from	\$2 ea
Garden table & 2 chairs, glass top	\$30
Garden table green with 3 chairs	\$45
6 plastic stacking chairs	\$6 ea
BBQ small portable (no cylinder)	\$30
BBQ Large wood frame (no cylinder)	\$50

Ring Dean on 0411 644 627
 Or
 Email: dean.pad64@bigpond.com



**UNDER NEW
MANAGEMENT**
Open 7 days per week
- 5427 3466 -
- 0401 548 617 -

Top of the Range
Mt Macedon

*Mention this advert to
receive our daily specials:*

Monday:	Bangers & Mash	\$10
Tuesday:	Fish & Chips	\$12
Wednesday:	Coffee & Muffin	\$5
Thursday:	Burger & Chips	\$10

Top of the Range
Mt Macedon

Heritage Society News

Have you discovered the Family Heritage Walk? I suspect that most readers of this column will know all about it but just in case you haven't got round to exploring it as yet, I'll repeat the details once again.

The walk was an initiative of the Woodend and District Heritage Society and begins at the back of the courthouse in Forest Street Woodend and winds its way down to the Five Mile Creek.

Begun in 2001 with the planting of a 'Federation Tree' there are already over fifty plaques, each with its individual black she-oak tree. On these plaques are recorded the stories of people who have made some form of contribution to the area. Some plaques record the contribution of early pioneers, others of people who are still living and working in the district today. Various organizations have also taken the opportunity to honor one of their members or to record the contribution of their group to the community. Every year new plaques and trees are dedicated and added to the walk during a special ceremony. In past years, this was held following the main Australia Day celebrations. Next year, as the Heritage Society is no longer organizing the Australia Day events, we will be holding the Family Heritage Walk dedications on Sunday 18th April.

If you would like more information about having a plaque and tree in the Family Heritage Walk please contact us as soon as possible. To obtain an information kit, please ring 5427 1893.

Welcome to the Woodend Star Kids Club August Birthdays

1st	Freya Barler.....	Turns 8
5th	Jasmine P. Carlos	Turns 13
7th	Gabriel Hebb	Turns 6
8th	Toby Campbell.....	Turns 5
9th	Tanya Bavington.....	Turns 8
11th	Kayla Hogbin	Turns 3
16th	Patrick Dwyer	Turns 13
17th	Connor P Barron.....	Turns 8
17th	Nicholas Bills.....	Turns 13
19th	Sarah Bavington	Turns 13
20th	Naomi Bavington	Turns 9
21st	Rupert Miranda.....	Turns 13
22th	Vicki Hare	Turns 12
24th	James Cations.....	Turns 11
24th	Emily Rose Lamb	Turns 11
27th	Ashlee Knight	Turns 11
27th	Alissa Knight	Turns 11
29th	Tania Adamcewicz.....	Turns 13
29th	Kate Vacirca	Turns 3

Happy Birthday Everyone!

JOIN THE WOODEND STAR KIDS CLUB

Fill in your details below and place in the drop-boxes. Age limit is restricted to 13 years old and under.

Full name: _____

Address: _____

Date of Birth: _____ Age: _____

Phone: _____

Parent/Guardian Signature: _____

**You can collect your birthday surprise
by visiting Collier Office & Business
Assist in the Woodend shopping centre
(PS: We need your jokes and pictures! Please drop them in.)**

Completed applications must be in our hands by the end of September.

Work is well underway on two new publications. Following are very successful gathering which focused on Ashbourne, we are collating still more anecdotes and records. If you have any reminiscences or photographs to add, please drop them in to the Woodend courthouse on a Wednesday or leave them in our secure posting box on the courthouse verandah. Our postal address is W&DHS, PO Box 124, Woodend 3442.

W&DHS members who receive "Heritage News" will be pleased to hear that we are planning to have "Shirley's Story" published in time for Christmas.

Submitted by Janet Hawkins.

TRADE & SERVICE DIRECTORY

ANIMAL CARE



Macedon Ranges Pet Care
An alternative to
conventional treatments

A reliable home care service for pets & farm animals,
servicing the Macedon Ranges since 2003
Ph: Judy on 5427 1352

ELECTRICIAN



**Macedon Ranges
Electrics**
REC 17836

☎ 5422 2182

Dan McCarthy - Mob 0417 542 235
Fax 5422 1188

31 Redesdale Rd, Kyneton, VIC 3444
PO Box 1125
Email sparky@macedonrangeselectrics.com.au

Compost

SIMPLY COMPOST
BRING LIFE TO YOUR SOIL AND
ORDER SOME COMPOST TODAY
ONLY \$8 PER 30 LITRE BAG
FOR MORE INFORMATION OR TO PLACE AN
ORDER
PHONE ROSS: 03 5427 0867
EMAIL: SIMPLYCOMPOST@LIVE.COM.AU

COUNSELLING



Keryn Allan COUNSELLOR
Dip. Prof. Couns.,
M.A.C.A.

Grief & Loss
Trauma
Stress, anxiety &
depression
Anger management
Workplace issues
Behavioural problems

Phone: 0417 011 300
Email: kezallan@ozemail.com.au

PSYCHOLOGIST

Sam Luxemburg
Registered Psychologist

- Personal Counselling in Woodend & Romsey (Medicare rebate available)
- Counselling Training
- Myers-Briggs personality testing

Phone: 0428 270 401
www.luxcollege.com.au

DRESSMAKER



Beryl's Tailoring
DRESSMAKING, ALTERATIONS,
BRIDAL, EVENING & DAY WEAR,
LADIES AND MEN'S REPAIRS

Beryl Bachelor
QUALIFIED DRESSMAKER, NEWHAM

BY APPOINTMENT ONLY
MON TO FRI 9 - 5

5427 0568 0418 510 179

TREE SERVICES



A&P Tree Services

- tree pruning / removal • stump removal
- tree planting / transplanting • rope & harness climbing
- confined space removal • fully insured

Professional commercial & residential tree maintenance
all work carried out by qualified arborist

Call Anthony 0417 059 969

TAROT READER

M.Ed. Admin., B.Ed.(Post Grad), B.A.



ETIENNE
Master Tarot Reader and Palmist

etiennetarot@live.com.au
appointments 03 5427 2118

TAROT GUILD OF AUSTRALIA
PROFESSIONAL MEMBER

ANIMAL CARE



DIANNE'S PET SITTING SERVICE
Your pets lovingly cared for in their own home

Woodend and Macedon
Phone: 0419 326 281
E-mail: dianne@hest.com.au

STONELAYING & PAVING



DUNN Stonemason & Paver
specialising in

- Retaining Walls
- Drystone Walls
- Stone Houses
- Paving
- Over 20 years' experience

Cameron Dunn
Ph (03) 5427 4778 Mob 0429 162 589

GATES, FENCING, PAVING

**GATES, FENCING
& PAVING**

- Automated Gates
- Colorbond Sheet Fencing • Pool Fencing
- Timber & Steel Picket
- Gates Made to Order

FREE MEASURE & QUOTE
PHONE LAURIE 0419 005 185
5427 1192

METAL GATES

BVM Metalcraft
SPECIALIZING IN OLD WORLD AND
MODERN STYLE GATES

STEEL BALUSTRATING INCLUDING STAINLESS STEEL
ROPE AND WROUGHT IRON, PUNCHED RAIL FENCING

ALL MATERIALS USED ARE
GALVANIZED OR ZINC PLATED

FINISHED IN YOUR CHOICE OF POWDERCOAT
OUR DESIGN OR YOURS

METAL POLISHING - ALLOYS, BRASS, STAINLESS STEEL

CONTACT BEN 0422 288 768
FOR A FREE QUOTE

WRITING SERVICES

a few good
WORDS

Editorials, Publicity, Advertising, Proof-reading, Letters.

Nadine Hartnett
Freelance Writer

0439 399 838
nhartnet@biopond.net.au

AIR CONDITIONING

**SPLIT SYSTEMS
INSTALLATION AND
SALES**

Efficient heating & cooling
For free quote, phone Dave
DW Air 0407 248 454

FIREWOOD

O'Callaghan Bros
REDGUM FIREWOOD SUPPLIERS
**SPLIT RED GUM
FIREWOOD**

Excellent Quality Delivered Dirt Free
Ph 7 days
0407 036 800 0429 957 091

Trade Page Ads are \$27 per month inc GST. Pay for 11 months in advance and receive 10% discount.

SPORTS NEWS

STRIDING OUT PERSONAL TRAINING



Julie Nicholson - Personal Trainer

14 Beves Lane Woodend. Vic. 3442

Phone: (03) 5427 3062 or 0416 002 760

Email: striding@bigpond.net.au

*Personal Training for all fitness levels.

*Fun, Motivating and Exciting way to get in and stay in shape.

*Personalised program for individual requirements.

Striding out for a better future!!

Redesdale Rumble 'N Rain

Saturday 11th July 2009 saw the first Redesdale Rumble hosted by Woodend Hanging Rock Petanque Club at the Redesdale Hotel.

"A great venue with all the potential in the world" said Ken Helmore WHRPC President as he reflected on the somewhat damp event.

"32 players, cold, wet and windy weather playing great recreational Petanque was a delight to experience".

"The revitalized Redesdale provides a range of social experiences and we are glad to have Petanque as the premier recreational opportunity".

Winners were:

1st Place: Romana Rawlings / Barbara McKimm / Gary Bradley

2nd Place: Marg Castle / Ken Whiltshire / Bob McKimm

3rd Place: Yvonne McGrath / Diana Kozicki / Jim Thompson

"We look forward to more fun events with friends of Petanque at a venue in our region. Our Echuca weekend is almost fully booked indicating the great social strength of our Club".

Next winter event is Ladye Place Thursday night 06 August 2009. Members and guests welcome.

Woodend Tennis Club wins Two Flags

Well done to the Midweek Section 4 ladies team for a decisive grand final win. The gridders are Leonie Barker, Cath Dawes, Briony Duff-Tytler, Shelly Giddings, Jane Cahill and Jean Randle. Also victorious was the Section 2 Night Team. Congratulations to Brett Geisler and the team, who are now lining up against the competition's top players.

New seasons for both competitions, played on Tuesday morning and Thursday night, started last month.

Good luck to the Saturday teams as they approach the finals. Players are sought for the next summer Open competition. The season starts in October, with no matches held over the Christmas break. Teams consist of three men and three women. Names are required by August 20.

New permanent players and emergencies are welcome in all competitions and anyone interested is asked to contact:

Paul (Thursday Night Open Competition) – 5427 2510 or beer@holgatebrewhouse.com

Kellie (Midweek Ladies) – 5427 1857 or dktduff@hotmail.com

Trudy (Saturday Open) – 5427 3524 or trudywarren24@netspace.net.au

Murray (Friday Night/Saturday Morning Juniors) – 5427 4487 or mfr60244@bigpond.net.au

Woodend Tennis Club is family friendly, with new facilities including lights, a barbecue and large portable shade tent. The clubhouse is available for hire at a casual fee of \$25 per hour. Enquiries: Nadine 54271571 or nhartnet@bigpond.net.au. Court hire can be arranged through the Woodend Information Centre.

Members, keep an eye out for the boxes of chocolates and nuts coming your way. They are part of a fundraising drive to further improve club facilities.

All news items, articles, advertising bookings and community news columns must be received by 15th of each month.

Registration day for Woodend Cricket Club

The registration day for both seniors and juniors will be held on Sunday 9th August 10.00am – 12.00 @ the Buffalo Stadium. Membership fees remain the same as last season Seniors \$155 Students \$105 juniors \$85.

WOODEND HEALTH & FITNESS

- Wide range of equipment
- Group fitness classes available
- Teen's Gym sessions available
- Personal training available

Start your fitness campaign today

30 Wood Street, Woodend

Phone Brian on 5427 1181 or 0488 016 709

Regular business card advertisements (90mm x 55mm) are \$41 inc GST per month - book & pay 11 months and get 10% off.



FLYING START FITNESS

make it happen!

• PERSONAL TRAINING • GROUP FITNESS

Gordon Muir

Certificate III & IV in Fitness

0425 111 765