

# THE NEW WOODEND STAR



Circulation of 3150 throughout  
Woodend postal district, Newham, Hesket, Ashbourne,  
North Woodend, Hanging Rock, Carlsruhe, Cobaw.

**AN INITIATIVE OF THE ROTARY CLUB OF WOODEND**

March 2009

A Monthly Community Periodical

First Publication 1997

Volume Thirteen No. 2

## Family Fun at Woodend Carnival *Saturday 28 March*

There are several reasons to look forward to autumn this year, cooler weather and hopefully rain, the beautiful colours of autumn, Easter and the Woodend Carnival!

The Carnival hosted by St Ambrose School and Parish has become one of Woodend's most popular family events and will once again be held in the St Ambrose School grounds and hall. The Carnival will open from 9.00am to 4.00pm with rides commencing from 9.30am and running till 3.30pm. The major theme for this year's carnival is Easter, so wear your Easter bonnets and take place in the hat parade and watch will pure enjoyment as the children revel in the thrill of an Easter Egg Hunt.

There will be some great rides this year. Teenagers will get a thrill from the new 'Hurricane' ride and 'Fantasy Island', a huge jumping castle. There will also be a giant slide and climbing wall. For the younger children there will be a carousel, trackless train, a smaller jumping castle, pony rides and a visit by the animals from Edgar's Mission.

There will be many stalls including the ever popular plants, fresh and homemade produce, trash & treasure, show bags, spinning wheel and cake stalls. Once you have found your bargains you can you rest and refresh yourself at our carnival café, which will be serving delicious homemade snacks, cakes, pies and devonshire teas. Or the smell of sausages sizzling, and thoughts of 'hamburgers with the lot' may tempt you at our mouth-watering BBQ. You can also try freshly cooked pofferjies, Dutch pancakes and an irresistible childhood favourite, fairy floss.

Entertainment will be provided by a wide rage of local musicians and entertainers and Woodend Idol will be held once again, showcasing the best local young talent. An additional interest this year will be the Emergency Services display including some new attractions from the Victorian Police.

So come and enjoy a fun-filled day at the Carnival!

All queries regarding the Carnival should be directed to St Ambrose School on 5427 1285 or Anne-Louise Lindner, Carnival Committee President on 5427 3056.

Submitted by Yvette Rowland, Publicity Coordinator  
St Ambrose School Carnival Committee



## Festival celebrates program launch

The Woodend Winter Arts Festival will celebrate the launch of the Festival program and brochure with a special guitar recital on Friday March 27th, 8pm at St Ambrose Church.

International competition winner Aleksandr Tsiboulski returns to Woodend to present a recital as part of the launch festivities. He has performed previously in Woodend at both the 2005 and 2006 Festivals, and is looking forward to once again performing at St Ambrose church.

Since his last visit to Woodend, Aleksandr has gone on to win First Prize in numerous international competitions, including the 2006 Tokyo International Guitar Competition and the 2007 Southwest Guitar Competition (San Antonio, Texas).

He will present a program of music by John Dowland, Joan Tower, Isaac Albeniz, Manuel Ponce and Leo Brouwer.

Purchase your tickets at the door from 7.30 pm, Friday 27th March (\$15/\$10 conc). For detailed information visit [www.woodendwinterartsfestival.org.au](http://www.woodendwinterartsfestival.org.au). Check the website in coming months for important reminders about tickets and accommodation for the June Festival.



*There will be lots of fun at the Woodend Carnival on Saturday 28th March*

## Breaking news

Macedon Ranges Shire tips are open to residents FREE OF CHARGE from today 26/2 to end May 2009 for GREEN WASTE!

Submitted by Janelle Robbins

Save your wardrobe.  
Save the world.



Thank you all for your kind thoughts & wishes whilst Fiona is in hospital.

Due to this circumstance, offers are invited to purchase ownership of Saving Grace. Offers above \$8,800 welcomed.

**Please contact Grace on 54271759.**

42 Anslow St Woodend

## The New Woodend Star

An initiative of the Rotary Club of Woodend Inc.  
The Bank, 75 High Street, Woodend, Vic. 3442  
ABN 32 685 225 161 No. A0021518E

Layout & printing by Woodend Copy Centre

For people wishing to submit stories, articles, letters to the publication, simply place the information in the strategically placed drop-boxes. These are located at the Liquor Shop, Collier Office & Business Assist, The Bank @ 75 High Street and Woodend Newsagency.

**Circulation: 3150 copies throughout Woodend and district**

**Disclaimer: The opinions and views expressed by the contributors are theirs alone, and do not necessarily reflect the views and opinions of the Committee of Management, or the Rotary Club of Woodend.**

**The Committee reserves the right to edit articles for length and clarity.**

**Committee: Barry Napthine, Ivor Johnson, Claudia Green, Irene O'Duffy, Joy Barker and Jane Watters.**

**Closing date for inclusion of articles for each issue is the 15th of the month prior to publication.**

### Advertising available

For all bookings and artwork submission please contact Irene 5427 3092.

network to [irene@woodendcopycentre.com.au](mailto:irene@woodendcopycentre.com.au)

This newsletter is supported by



### ADVERTISERS PLEASE NOTE:

**Unless specific dates are given for inclusion - all advertisements will be placed and charged for until notified otherwise IN WRITING.**

## Kyneton High School

Celebrations for the 60s. Get together for those people that were at Kyneton High School in the 1960s at Lake Weeroona, Napier Street, Bendigo. Join us on Easter Saturday the 11<sup>th</sup> April '09 at 12 noon. Birthday Celebrations for those turning 60! BYO.

Information call Jenny Lester Smith on T: 03 5392 2331

### SUBSCRIBE TO THE NEW WOODEND STAR

Do you live outside the *New Woodend Star* distribution area? be sure to receive your copy every month by subscribing. A yearly subscription of 11 issues is just \$27.50. Post to *New Woodend Star, C/- The Bank, 75 High Street, Woodend 3442.*

Name: \_\_\_\_\_

Address: \_\_\_\_\_

Phone: \_\_\_\_\_

Enclosed: Cheque/Money Order for \$27.50

## News from Woodend Lions Club

The club provided breakfast for those early arrivals at the Woodend Historical Society Australia Day Event. On the menu were sausages, bacon and egg sandwiches and the Woodend SES provided tea, coffee and cordial.

**TO BE CONFIRMED:** Woodend Lions 35th Annual Art Show will be held Labour Day weekend 7-9 March 2009, in St Ambrose Hall, Templeton Street.

Woodend Lions Club meets the 2nd Wednesday of each month at Templeton's Restaurant at 7pm. Visitors are always welcome. Phone Robyn Robbins 5427 1342.

## Advertising Rates for 2009

New advertising rates per month from 1/1/09

*All rates include GST & are priced per month.*

<b>Business card</b> (55mm x 90mm) .....	\$41 inc GST
<b>Trade Page</b> .....	\$27 inc GST
<b>Quarter page</b> (90mm x 134mm).....	\$90 inc GST
<b>Half page</b> (90mm x 277mm).....	\$160 inc GST
<b>Full page</b> (190mm x 277mm) .....	\$280 inc GST
<b>Insert</b> (of your printed brochure).....	\$180 inc GST

*Advertisers: Please note - it is in your interest to book and pay for a year in advance, as a 10% discount applies to any full year pre-paid booking.*

*This now includes to Trade Page & Eating Out sections.*

*Any existing pre-paid ads will revert to the new rate on completion of the pre-paid period.*

### Information for advertisers

Any accounts queries can be made to Joy on 5427 4089 during office hours.

**Mail should be directed to: New Woodend Star, C/- The Bank, 75 High Street, Woodend 3442.**

Drop boxes for articles are at: The Bank (75 High Street), Woodend Newsagent, Collier Office & Business Assist and Marks' Liquor Shop. Copies of the publication will also be available.

### Woodend Star Publication Dates for 2009

April	30th March
May	4th May
June	1st June
July	29th June
August	3rd August
September	31st August
October	28th September
November	26th October
Dec / Jan	30th November

*Advertisers and contributors are reminded to book in by the 15th of the month with artwork to follow immediately. Changes to advertisements, new advertisements or cancellations should all be made by email or in writing.*

## FREE Successful Grant Writing Workshop!

Macedon Ranges Shire Council's Community Development Unit will be launching its 2009 Governance Workshop Series with a Successful Grant Writing Workshop, presented by 'Our Community'.

The FREE workshop will provide an opportunity for community groups and associations to gain an understanding of the grant application process and become more confident in applying for funds.

The Successful Grant Writing Workshop will be held at the Woodend Community Centre on Monday 16 March 2009 at 7pm with light supper and refreshments provided.

Bookings are essential. To book your place at this informative workshop, please contact Council's Community Projects Team Leader, Gaynor Atkin on 5422 0247 or email Gaynor via [g.atkin@macedon-ranges.vic.gov.au](mailto:g.atkin@macedon-ranges.vic.gov.au).

The Macedon Ranges Shire Council's 2009 Governance Workshop Series will be delivering workshops throughout the year, addressing topics such as Recruiting & Retaining Volunteers, Risk Assessments & Management, Committees & Constitutions, and more. A leaflet detailing the series will be available soon. For more information, please contact Gaynor Atkin via the contact details above.



**Magnetic Websites**

**Martin Beaumont**

PHONE 03 5427 4478  
MOBILE 0414 274 988  
HTTP [www.magneticwebsites.com.au](http://www.magneticwebsites.com.au)  
EMAIL [martin@magneticwebsites.com.au](mailto:martin@magneticwebsites.com.au)

Developing websites for the Macedon Ranges and beyond, ask how we can help you get online



**ADVANCED EQUINE DENTISTRY**

Dr Shannon Lee BVSc

**0418 598 621**

we come to YOU!

Winner 2008 Macedon Ranges Business Excellence Awards for Customer Service

Mobile services for Macedon Ranges  
[www.advancedequinedentistry.com.au](http://www.advancedequinedentistry.com.au)



**New Members**  
**The Rotary Club of Woodend**

Put something back into this great community and be part of a worldwide organisation that helps build goodwill and peace allowing ordinary people to achieve extraordinary things and bring about exceptional change in the world.

**Contact Kai 5427 1029**

## Woodend Rainfall Report 2008

Each month we add the rainfall details and the year to date total. Our rainfall report shows 2004, 2005, 2006 and 2007 comparisons. Please note that your own rainfall readings may not exactly match these. These readings are the official BOM readings and have been taken in the same location in Woodend for many decades. All measurements are in millimetres.

	2004	2005	2006	2007	2008	
January	21.2	47.4	49.8	83.5	17.1	Jan
February	6.2	72.2	53.1	27.4	22.1	Feb
March	19.0	5.8	20.6	35.7	25.4	Mar
April	41.2	18.8	46.4	20.2	20.4	April
May	39.3	13.6	58.8	95.7	43.7	May
June	98.0	116.7	36.0	105.1	88.7	June
July	93.8	76.9	91.6	83.3	112.5	July
August	76.1	125.0	30.8	34.8	52.2	August
Sept	31.7	55.2	50.6	49.8	42.0*	Sept
Oct	38.9	49.8	5.2	12.1	13.0*	Oct
Nov	111.0	72.4	13.0	91.0	67.2	Nov
Dec	144.2	40.0	31.0	101.2	96.0*	Dec
<b>YTD:</b>	<b>720.6</b>	<b>693.8</b>	<b>486.9</b>	<b>739.8</b>	<b>600.3</b>	<b>YTD</b>

**Reminder: We are now on Stage 3A water restrictions.**

Figures for 2008 include information from a different location indicated by \*. This has resulted in a slightly different total than the official BOM totals.

**There was no rain in January 2009.**

## Trivia ... to be sure, to be sure

It doesn't matter how silly you look, Woodend Tennis Club is inviting everyone to show off their general knowledge and music smarts at a TRIVIA NIGHT on Saturday, March 14.

The fun will start at 7pm with host Sandy kicking off proceedings at 7.30pm.

There will be prizes and lots of laughs during the night, which will be held at the clubhouse behind the Woodend Community Hub and skateboard ramp.

With St Patrick's Day falling a few days later, organisers encourage participants to wear something green or a wee bit Irish.

Tickets are \$20 pre-paid. BYO supper, drinks and glasses. Tea/coffee provided.

Bookings are now being taken for individuals or groups of up to eight. For tickets contact Cath on 54273422; Trudy 54273524; or Jane 54272590.

Profits will be put towards new tennis court surfaces.

*Meta Massage*

SPORTS/REMEDIAL MASSAGE, SHIATSU, REIKI  
Raymond White

Telephone 0411 268 336  
for an appointment

18 years experience • Chronic and acute conditions  
Sports injuries • Rehab work  
\$45 special for tradies, runners & bike riders

**All news items, articles and community news columns must be received by 15th of each month.**

# WOODEND SELF STORAGE



- Store your business documents, stocks or furniture
- 7 day access
- 33 individual sheds
- Affordable prices
- Insurance available

For any enquiries  
please contact  
**Leonie or Dennis Barker**  
on 5427 4175

## RSL Report

After a lot of preparatory work by our volunteers, led by Bill and Reg on the Hall, our builder has completed the work required by the engineer and the hall meets current regulations. So, finally the Bride has arrived and we can and will provide full RSL services to all our members.

A heartfelt thankyou to all those involved in the restoration of the hall over the last 12 months. We will complete the painting of the outside of the hall in the next few weeks.

Welfare Officer, Barry Meldrum is at the Club every Tuesday morning from 9 – 12, he can also be contacted on 5427 1162. As previously advised, we will be open on Monday's and Friday's from 9am to 12md, please pop in.

All members are urged to be an active part of the Club by attending our Annual General Meeting at the RSL Hall on the 11<sup>th</sup> March 2009 at 7.30pm. Nomination forms are available at the clubrooms.

Eric Read, Treasurer

## WARNER'S JEWELLERS

EST. 1912 ~ 4th Generation Jewellers

97 High Street, Woodend 3442

Tel: 5427 1573

**Manufacturing Jewellers and  
Diamond Ring Makers**

Stocking: Portmeirion, Whitehall,  
Queens, Pimpernel, Royal Doulton,  
Cherished Teddies, Royal Sengalor.

## We will rise to the challenge

The confronting extent of devastation in our communities has dealt our people challenges never before faced by us as a region, a state and a nation.

The tragic loss of life in the Black Saturday fires ... has left no one person untouched – families, our friends, entire communities are grieving. To those who have lost loved ones, you have my sympathy.

The devastation of homes and businesses has brought us heartbreak straight from Hell. Yet the outpouring of comfort and support for survivors of the firestorm has provided the first rays of hope for new life in each of our affected communities.

The wonderful spirit that was brought to the fore last Saturday and has continued since from our fabulous volunteer firefighters and local residents determined the beat the menace of fire has transcended into the relief and recovery efforts.

Our communities and our nation have rallied like never before in providing clothing, food, where possible temporary accommodation and, most importantly, every ounce of assistance that has been within the means of organisations like Red Cross and the Salvation Army, our local councils and community groups and people across Australia who, until a few weeks ago, were to us total strangers. Today they are our friends.

The need for understanding and assistance will last long after the final flames have been doused and the smoke clears from our valleys.

In the coming months, and probably years, there is much to be done in rebuilding our communities.

The immediate priority remains providing help for our residents to regain some degree of normality in their lives - the basics of clothing and food and toiletries; finding more suitable accommodation beyond tents, cars or staying with family or friends; ensuring that assistance and insurance claims are promptly and compassionately assessed.

We must also be mindful of children who have experienced horrors totally unexpected for their young years as they return to schools, sometimes a new school.

And there will be the massive clean-up task that our communities must face, an important step towards rebuilding townships properly planned to maximise the safety of our people and with improved facilities and resources.

The utter devastation across our communities will require not only the spirit of the last week but considerable ongoing financial support from all levels of government as we rebuild entire towns.

Some announcements have already been made and I will continue to work with our communities as we move from this period of grief and shock to putting in action our dreams for the future of our towns.

Submitted by Fran Bailey

# WOODEND TAXIS

☎ 5427 2641

- Taxi Passengers
- Verbal Message Delivery
- Airport & Melbourne Service
- Also Pickup & Delivery of Letters & Very Small Parcels

**Betty Valli**

29 Urquhart Street, Woodend

## Dolls, Dolls, Dolls

Dolls, Dolls, Dolls will run at the Kyneton Museum until the end of April along with a range of events to coincide with the exhibition.

**Doll and Bear Valuation Day – Saturday 21st March  
11am – 4pm with talk at 2.00pm.**

We are delighted to have one of Australia's leading doll, bear and collectable auctioneers, Graeme Horne of Abbingdon Auctions come along and provide valuations throughout the day on that special treasured doll or bear you have in the cupboard. There will be a talk at 2pm on the day exploring doll and bear collecting.

\$5 per person with the chance to win a \$50 voucher to spend at the next Abbingdon Auction.

Kyneton Museum, 67 Piper Street, Kyneton 3444  
5422 1228

[museum@macedon-ranges.vic.gov.au](mailto:museum@macedon-ranges.vic.gov.au)

Open 11am – 4pm Friday to Sunday

Group tours and school groups by arrangement.

## Armstrong Collins & DeLacy SOLICITORS

*Established 1867*

## Commercial, Property, Estate and Family Lawyers

**Woodend Office:**  
81 High Street, Woodend  
Phone 5427 1472 Fax 5427 3073

**Kyneton Office:**  
143C Mollison Street, Kyneton  
Phone 5422 1677 Fax 5422 3357

Kirsty Nuttall

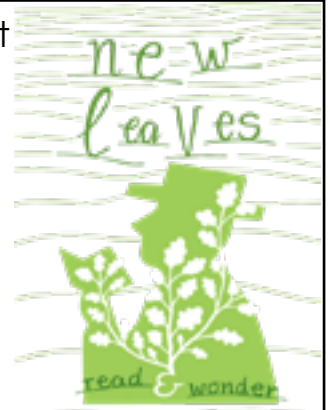
## MACEDON RANGES PICTURE FRAMING SERVICE

By appointment only  
Phone/Fax: 5427 3511  
Mobile: 0417 337 857

Woodend's newest  
bookstore

35c Anslow St,  
Woodend  
5427 3772

open  
Tuesday Sunday



## The Drama & Acting Workshop

The Drama and Acting Workshop is back. Term 1 started Tuesday 17th February at The Red Brick Hall, Kyneton. Because of a massive response we will now be offering New Classes on Thursdays evenings\*

Tuesday and Thursday Classes

4.00-4.30pm 4-7 years

4.30-6.00pm 8-15 years

6.30-8.30pm 16 and over

Please call for free trial class

A range of professional drama and acting classes for school children, teens, adults as well as pre-school classes that will explore storytelling, movement, voice/body, improvisation, role-play, character development and script work as well as specific stage craft and camera technique.

Classes run by Paul Canlan, industry professional with over 15 years experience as an Actor, Director and Teacher

Look out for Intensive Workshops throughout the year in Public speaking, Stage Combat, Film & Television and School Holiday Programs.

For Further information, phone: 5422 1557 or mobile: 0403 896 189

Email: [daworkshop@ymail.com](mailto:daworkshop@ymail.com)

## NORTH CENTRAL ACUPUNCTURE & CHINESE MEDICINE

仁

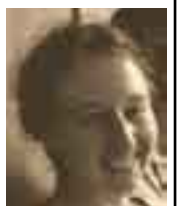
心

仁

術

### Gina Pilven

BaHSc: Chinese Medicine  
Acupuncturist  
Chinese Herbalist  
Health Rebates Apply\*



Westpac Bank Building  
11/75 High Street, Woodend

0405 467 418

# MASSAGE THERAPY

Natalie Taranto

Reconnect and Restore the Flow Within

## Remedial Massage Therapist

- Deep Tissue
- Relaxation
- Pregnancy
- Reiki

**\$10 off initial visit**

4/4 Collier St, Woodend  
Call for an appointment

**0402 534 983**

mobile massage also available



## Wild Ride: The Rise and Fall of Cobb & Co

Author: Sam Everingham

In 1853, a young American arrived in the new colony of Victoria hoping to make his fortune from the world's greatest gold rush. He soon realised that the real money was to be made from the miners' need to travel from the fields where they found their gold to the towns where they spent it, and established a coach company that would literally carry his name into every household in the land: Cobb & Co.

But Freeman Cobb himself was long gone by the time the company bearing his name became an Australian legend. Wild Ride is the story of the two extraordinary men, James Rutherford and Frank Whitney, who along with their business partners took Cobb's humble company and made it into the Qantas of its day. These were pioneers, carving a path through otherwise impassable terrain, settling unsettled land, enduring bushrangers and terrible accidents, and making their fortunes. The Rutherford and Whitney families became two of the most significant of their era, unrivalled in their influence and, finally, vicious in their falling out.

Thursday 5th March 2009

2.00—3.00pm Woodend Library

Cnr High and Forest Sts Bookings 5427 2074

**Macedon Ranges Electrics**  
VIC 17428  
5422 2182  
Mobile Dan 0417 542 235  
Fax 5422 1188  
31 Redesdale Rd, Kyneton, Vic 3444  
PO Box 1125  
email: spawky@macedonrangeselectrics.com.au

### CONTINUING VETERINARY EXCELLENCE

*Our commitment to you is to provide the highest quality veterinary services in medicine, surgery, health and wellbeing and preventative healthcare in a friendly, personalised & caring environment.*

*We care for all companion animals, equine, alpacas & livestock.*

### ANIMAL MANIPULATION

24 Hour Emergency Care

**5427 4344**

12 Anslow Street Woodend

## AGRICULTURAL CONTRACTOR



### PHILIP BEATTIE PTY LTD

Located in the Macedon Ranges and servicing a wide surrounding area, Philip Beattie Pty Ltd can provide you with the latest equipment and operators for you to produce the best in

- CROPPING
- SPREADING/FERTILISING
- PASTURE RENOVATIONS
- ZERO TILL RENOVATIONS

*Now with the added feature of an Outback GPS Guidance System to enable full and accurate mapping of your paddocks*

At Philip Beattie Pty Ltd we can also provide you with all your hay making requirements supplying

- Mowing
- Raking
- Teddering
- Large Square Bales
- Round Bales
- Small Square Bales
- Silage Wrapping

#### Contact:

Philip Beattie Pty Ltd

45 Millers Lane

Newham Vic 3442

Ph/Fax (03) 5427 0702 Mobile 0419 573 226

psbeattie@bigpond.com

## Rural Skills Cadetship Program

*Grants for tertiary students and host employers*

Are you a full-time tertiary student from the Macedon Ranges Shire? Are you studying away from home?

You may be eligible for a grant of up to \$2,500 to complete a paid cadetship in your home town during terms breaks.

Businesses located in the region, wishing to employ a cadet, are also eligible for funding of up to \$1,250 towards employment costs.

For more information please contact Lyn Newberry 54219616 or email [l.newberry@macedon-ranges.vic.gov.au](mailto:l.newberry@macedon-ranges.vic.gov.au) More information about the program is available from [www.rdv.vic.gov.au](http://www.rdv.vic.gov.au)

## GARAGE DOORS

**ELECTRIC GATES • SOLAR GATES  
SELF OPENING GLASS DOORS**

**Ken Ross**

**0427 661 543 5422 7507**

**Central Highlands Doors & Gates**

*Serving Kyneton & Woodend*

**WOODEND**

**Proud to be Pokie-free**

Pamela Kell

**Remedial Massage Therapist, Level 1 Pilates Instructor**

SSNT/AAMT, Workcover accredited

Relaxation, Sports, Remedial Massage

Manual and Lymphatic Drainage

By Appointment

**22 Goode Street, Gisborne**

**5428 1000 0408 093 098**

## A successful picnic day

The Macedon Ranges and District Motor Club held its 22nd Annual Picnic at Hanging Rock Reserve near Woodend (VIC) on Sunday 8th February.

Some 2080 Display vehicles, including cars, motorcycles and trucks were on display over the course of the day with a further 1200 general public vehicles attending. Many of the Display cars started queuing at the gates before the scheduled 7:30am start time and from 8am there was a steady stream of vehicles pouring into the Hanging Rock Reserve.

Whilst not a competitive day – there was significant interest in the awards presented by the event sponsors and once again a wide spectrum of vehicles were picked by the judges.

Several novelty awards, including oldest vehicle driven to the event (1927), oldest driver who drove to the event (80 years young) and vehicle travelling the greatest distance (Adelaide SA) were also awarded.

Several light rain showers during the day did little to dampen the enthusiasm of the crowds and the attractions provided for the children remained busy for the day.

Total numbers were down on the previous year – no doubt influenced by the circumstances of Saturday's extreme weather and fires, however the day was certainly another success and will ensure that the event will continue on into its 23<sup>rd</sup> year in February 2010. For more information please contact the Club's Hanging Rock Coordinator on 0419 393 023 or email graham.williams00@gmail.com and further information is available at the club's website <http://www.mradmc.com.au>.



### Victoria Hotel Woodend

*every Wednesday  
night*

**Registration from  
6.30pm**

**Game starts  
7.30pm**

**For information  
phone 5427 2721**

## CHINKA STEEL CONVEYANCING (HEP Steel, Solicitor)

**FOR ALL YOUR  
PROPERTY SALES AND PURCHASES**

**RING CHINKA ON  
03 5427 2477**

**74 HIGH STREET WOODEND 3442**

## Local Australia Day Celebrations

For the last eight years the Woodend & District Heritage Society has organized and co-ordinated the Australia Day ceremonies for our local community. We took up the organisation of the event, after it had lapsed for a few years, following council amalgamations.

Over the years we have added a number of innovations such as the Parade of flags. This colourful parade led by a Piper celebrates the countries of origin of the people who make up our community. In addition to the traditional BBQ breakfast and refreshments, and the formal flag raising ceremony, we have arranged for local folk groups to provide appropriate music for the day. This year we also established a great new venue, which, apart from being very attractive, provides wonderful shade in a lovely treed area.

After much thought, the Heritage Society has decided that it is time to hand over the organization of Australia Day ceremonies to another group. We have a real concern that those of us who play the major role in its organization are not getting any younger and we feel that new and younger blood is called for.

Without the great support of many other groups, we could never have managed to bring Australia Day ceremonies up to the present standard. We sincerely thank all the groups currently involved and hope they will continue to offer their help in the future – all that is required is for one group, or a new committee, to agree to take responsibility for the overall organization. We are confident that one will come forward and offer to do this. We thank everyone in the community who has supported this event over the last eight years, and hope that you will continue with your support in the years ahead.

We will continue to organize the Dedication ceremony for Plaques and Trees in the Family Heritage Walk, together with its accompanying photographic displays and hospitality to participants, family and friends. We will, however, do this at a different time, when the weather is kinder, and not on a Public Holiday. This should make it easier for families and friends travelling long distances. The date is not yet finalised, but it will probably be on a Sunday in March commencing next year. We look forward to your support and participation in this event.

Submitted by the Woodend & District Heritage Society.

ZUMSTEIN



Zumstein Pty Ltd

Factory 1/32 Brooke Street

WOODEND VIC 3442

Ph 03 5427 4579

Fax 03 5427 3559

Mobile 0412 138 364

## DESIGNER AND MAKER OF FINE FURNITURE AND JOINERY

solid and veneered furniture  
external and internal doors  
wardrobes, studies  
laundries  
bathroom furniture

"Third generation woodwork really shows"

## "Magnificent" Art MAD Gallery & Café

19 High Street, Lancefield

Tel: 5429 1432

Web: [www.madgallery.com.au](http://www.madgallery.com.au)

Open everyday 10am – 5pm

We're proud of our coffee and promise you  
the best coffee around, or your money back!

## Fungal treasures of our local forests

As the summer draws to a close, it's not only farmers praying for rain, but also avid mushroom hunters, who eagerly await the cool autumnal mornings and the first flush of fungi. There is something rather magical and evocative of a fairytale about mushroom foraging. It's a little like "treasure-hunting for adults" with mushrooms being one of autumn's long-awaited, but fleeting pleasures.

Due to the long hot summer, fungi may appear a little thin on the ground at the moment, but with the first rains, they will inevitably fruit in all their diversity for which the local forests are renowned. A stroll on a mild autumn afternoon atop Mt Macedon can reveal all manner of succulent mycological treasures. As well as simply enjoying the enormous beauty of the surrounds, the scent of damp earth and vegetation all add to the anticipation of a surprise discovery of edible mushrooms.

In parts of Europe, mushroom gathering is a madly competitive and secretive pastime with mushroom hunters fiercely guarding their productive troves. However, here in Australia, we're fortunate to have a far greater diversity of species, most of which, we know very little about, especially in regard to their edibility. The famed and highly valuable truffle is a good example for which there are a paltry couple hundred species in Europe compared with the couple of thousand believed to be in Australia. However, which species are edible and which are likely to land you an almighty stomach ache or far worse, is poorly known relative to the knowledge of our European neighbours.

Local ecologist and photographer, Alison Pouliot will be running a series of fungi ecology workshops this autumn to both inspire interest in these fascinating organisms, explore some of the rich mythology surrounding them and advise which are worthy of popping in your basket. In recent years she has been spending time in Europe researching mycology and the traditions of wild fungi gathering. The workshops offer participants an illustrated journey into the fascinating ecology of fungi and an exciting foray deep into our local forests. Many fungal specimens from the local area will be displayed and discussed during the workshop.

For further information visit [www.alisonpouliot.com](http://www.alisonpouliot.com) or email her at [alison@alisonpouliot.com](mailto:alison@alisonpouliot.com).

Workshop bookings can be made directly as follows:

Saturday 25<sup>th</sup> April, Woodend, Bookings: 5427 1845 or [wnci@netcon.net.au](mailto:wnci@netcon.net.au)

Sunday 26<sup>th</sup> April, Woodend, Bookings: 5427 1845 or [wnci@netcon.net.au](mailto:wnci@netcon.net.au)

# TRIPLE



**DRIVER TRAINING**

Accredited Certificate III and IV Instructor  
Servicing Macedon Ranges and Surrounding Areas

Ph. Laurie

5427 1192  
0419 005 185



## Macedon Ranges Equine Vets

- Full equine services including x-rays, ultrasound and endoscopy
- Foaling down
- Microchipping
- Dentistry
- Lameness

**0400 449 990 03 5428 1888**

*Alison Pouliot with a well-known parasitic  
Armillaria sp.*



**15% off all easter  
moulds, cutters,  
egg cups and  
candles**

Home  
Kitchen  
Giftware  
OPEN 7 DAYS

**Blue Orange Concepts**  
Shop 2, 130 High Street, Woodend. Ph 5427 4500

*Lachlan Fleming*



**CARPENTRY**

REGISTERED BUILDING PRACTITIONER

**0401 499 898**

EXTENSIONS RENOVATIONS  
ALTERATIONS

## RedBeard Historic Bakery

Cafe open 8 am to 5 pm  
Tuesday to Sunday and public holidays

Visit [www.redbeardbakery.com.au](http://www.redbeardbakery.com.au)

for info about:

Next music pizza night: Sat 21 March, Andrew McKenna  
Next baking workshop: Sun 8 March, see web for details  
our products – organic, local and seasonal ingredients  
our 120-year-old Scotch oven  
retail outlets and farmers markets in Central Victoria  
sourdough baking workshops



Winner 2008 Hepburn Tourism  
Award – Food and Hospitality

38A High St Trentham  
Tel. 03 5424 1002

## Movies that Matter

hosted by *Macedon Ranges Sustainability*  
5th March 2009 at *Woodend Neighbourhood House 8pm*  
*Fast Food Nation (2006) (Docu-drama)*

Starring: Greg Kinnear, Wilmer Valderrama, Avril Lavigne, Kris Kristofferson  
Based on the acclaimed book by Eric Schlosser, this film traces the birth of an everyday, ordinary hamburger through a chain of riveting, interlocking human stories—from perilous work in meat-packing plants to life behind the fast-food counters to the dirty secrets of fast-food corporations. What exactly are we biting into?

## SELL YOUR CAR TODAY

Prestige ~ Family ~ Sports ~ 4X4

car connect direct

**0418 183 360**

Cash ~ Bank Chq ~ Finance Paid Out  
Email: [ccdirect@bigpond.net.au](mailto:ccdirect@bigpond.net.au)

LMCT-10132W

Fiona Makin  
0402 209 505



IT and Geological Services

- Website design and development
- Content management systems
- Online shopping carts

[www.makinitezy.com.au](http://www.makinitezy.com.au)  
[fiona@makinitezy.com.au](mailto:fiona@makinitezy.com.au)

## SOLAR DIRECT

- Solar Hot Water
- Grid Interactive Solar Systems
- Stand Alone Power Systems

Ph: 1300 55 77 98

Mobile: 0411 269 489

Lancefield

## Appeal thank you

Kerri's Bundle of Bears, Woodend is thankful for the generosity shown by members of the St Ambrose Parish & School community and others towards our appeal to help families affected by fires in the Kilmore/Wandong area.

Two carloads of goods as well as cash were personally delivered to Kilmore Primary School. Your support to date is greatly appreciated. We will continue to deliver donations, particularly any specific items requested, and offer practical assistance as families start to recover from this tragedy and rebuild their properties.

Cash donations can be made at Kerri's Bundle of Bears. We will publicise any requests for specific assistance as they arise.

In appreciation, Kerri & Chris Botwood and Nadine Hartnett

## Chiropractor – Mark Brown

- 20 years in Practice.
- Upstairs at Westpac Bank, 75 High Street
- Muscle realign and stretch techniques
- Remedial massage
- Shoulder, elbow, wrist, knee, foot problems
- Headaches, migraines, athsma, neuralgia, digestive problems



Phone 5427 1456 or 0407 526 403

ADVERTISEMENT

Donna  
**Petrovich MP**

State Member of Parliament for Northern Victoria Region

*Working for the  
Woodend  
Community*

*Your Country Voice*

5782 2011  
84 Sydney Street, Kilmore

Authorised by D Petrovich, 84 Sydney Street, Kilmore.



# Eating Out, In & Around Woodend

## Schatzi's

Frank & Rose Gorlitz  
Open 7 Days  
8am till late  
breakfast, lunch & dinner

For Bookings  
Ph/Fax 5427 4447  
Mobile 0403 423 537  
"Where Lovers of Food Eat"



## MOUNT MACEDON WINERY

open Saturday & Sunday  
11am-5pm

**Book Christmas in July functions now**

433 Bawden (Douglas) Road, Woodend / Mt Macedon  
[www.mountmacedonwinery.com.au](http://www.mountmacedonwinery.com.au)

**5427 2735**



## victoria HOTEL

WOODEND

### Bistro

### New Summer Menu Functions

*The Place to Meet*

**Bookings 5427 2721**

67 High Street, Woodend  
[www.vicwoodend.com.au](http://www.vicwoodend.com.au)  
[info@vicwoodend.com.au](mailto:info@vicwoodend.com.au)

## GISBORNE PEAK WINES



Short Road, Gisborne South

### Wonderful wines & wood-fired pizzas

Casual, fun & friendly. All weather venue

Tel 5428 2228  
[www.gisbornepeakwines.com.au](http://www.gisbornepeakwines.com.au)

## Not Just Fudge

126 High Street, Woodend

Home-made Fudge,  
Natural Ice Cream, Coffee, Tea, Herbal Tea, Milk &  
Thick Shakes, Cakes, Sandwiches,  
Freshly Squeezed Fruit & Vegetable Juices

Ph: 5427 2210

Fax: 5427 2880

\* FAB FOOD  
\* FUNCTIONS & CATERING  
BY ARRANGEMENT  
Bookings Essential  
BYO wine only  
Light Snacks Mondays  
Free entry for  
Macedon Ranges residents

**Tel: 5427 0295**

*Large range of Australiana Gifts*

## Hanging Rock Café & Country House

## HOLGATE'S BAR & RESTAURANT

Microbrewery Hotel with cosy  
open fires, stained glass windows  
and friendly atmosphere. Award  
winning local beer. Delicious  
meals including house-made bread, pasta and desserts.  
Function room and stylish accommodation now available.

Open for Lunch Tues-Sun. Open for Dinner 7 Days

79 High Street, Woodend

Ph 03 5427 2510



## Marlins on High

*fish and chippery*

Freshly cooked seafood, burgers and salads

Shop 2/99 High St Woodend Vic 3442

Tues, Wed, Sun 11am to 7.30pm

Thurs, Fri, Sat 11am to 8.00pm

Phone orders welcome

**5427 1166**



## Woodend Art Group

*A rare opportunity*

We currently have some vacancies in our Tuesday or  
Thursday night Life Drawing sessions and Portrait  
sessions on Tuesday afternoons 2.45pm to 5 pm or every  
3rd Sunday 10am to 2.30pm. Novices and non members  
warmly welcomed. Use media of your choice.

Please contact Amanda 5423 5144 or [aj@darksky.net.au](mailto:aj@darksky.net.au).



**Rock View Homestead  
Receptions & Functions  
Ph: 5427 2076**

*Restaurant, Roasts & Local Wines*  
**Sunday lunches available pre-booking only**  
**On Mt Macedon Rd, between Braemar College  
& Straws Lane**

**5427 2076**

## Newham CFA receives substantial gift

As a consequence of the recent major fires, Newham CFA is the beneficiary of a very substantial gift from overseas that will be applied to buy much needed additional equipment.

Ben Luckock, the son of two members of the Newham brigade, lives and works in London as a crude oil trader, an occupation that depends on building a wide network of contacts in various parts of the world. With the recent fires receiving a great deal of reporting overseas, many of Ben's contacts asked him if his family were safe. In response, he sent an email explaining that Newham was in the path of a significant fire, and that one Newham tanker was supporting other areas whilst the second was held back to defend the local area if needed.

In the email, he also explained the volunteer structure on which the CFA depends, and the fund raising that supports the purchase of much of the equipment needed to fight fires



**Fully Licensed Restaurant**  
17 Templeton St. Woodend  
**Ph. 5427 4852**

CATERING FOR  
AN INTIMATE TABLE FOR TWO  
THROUGH TO GROUP BOOKINGS  
IN OUR FAMILY FRIENDLY RESTAURANT  
**TAKEAWAY NOW AVAILABLE.**



**OPEN TUES TO SAT**  
from 5.30 pm



**Visit one of Macedon Ranges  
hidden treasures with family  
and friends over the summer  
break. Open for wine tasting,  
coffee and lunch each weekend.**

**Kyneton Ridge Estate**

MACEDON RANGES

**Open Weekends**  
tastings • pizza • coffee

Wine crafted with pride.

Phone: 5422 7377

Mobile: 0409 017 310

**Kyneton Ridge Estate**

517 Blackhill Road, Kyneton

enter via Halloran's Lane

[www.kynetonridge.com.au](http://www.kynetonridge.com.au)



**THE BENTINCK**  
*of Woodend*

**CONFERENCE  
WEDDINGS  
FUNCTIONS**  
Ph: 5427 2944



**Enjoy a unique experience at  
The Bentinck of Woodend**

8 Carlisle Street WOODEND 3442  
[www.bentinck.com.au](http://www.bentinck.com.au)

effectively. He closed the email by suggesting that offers of money would be welcome, and that he personally would match amounts given by others, thus doubling their contribution.

He then approached the Charities Committee of his employer, Trafigura Ltd, asking for their support, and they agreed to match the combined amount given by Ben and others, thus multiplying the original contributions by four.

The response was quite extraordinary. A colleague in Greece gave a thousand US dollars, another in Canada gave a thousand Canadian dollars, a third in New York gave six hundred pounds, and many others gave substantial amounts in various currencies, each of which was multiplied by four. The end result came to around \$50,000, a huge contribution towards purchase of new equipment. The management team at Newham CFA is now evaluating the most useful equipment for their needs, probably a 4WD vehicle with tank and pump to act as a fast response vehicle to small fires, and a mobile command centre at larger fires. This donation will go a long way towards buying such a useful vehicle.

It is heart warming to hear of the generosity of others in far-flung parts of the world when disaster strikes, as it has done in Victoria recently. Newham CFA is the beneficiary in this case, and how fortunate we all are that others care so much.

Contact: Peter Hobbs, Captain, Newham CFA, 0427 529 296

## KYNETON BOWLING CLUB

**Jack High \$9 Lunch**

Complimentary house wine or beer

Tuesday - Fridays only

\* special conditions apply



Mollison St,  
Kyneton

Lunch: Tues - Sun 12pm - 2pm

Dinner: Mon-Thurs 6pm-8.30pm, Fri & Sat 6pm-9pm

**Phone: 5422 1902 - Bookings Essential**

## Artanica at Sefton

18-19 April

Artanica is an exciting annual exhibition of diverse garden sculpture, showcasing pieces from some of Victoria's best sculptors.

This is a fantastic opportunity to view and purchase spectacular sculptures in a variety of media including: hot glass, iron, stone, metal, wire and more.

Artanica provides visitors with a rare opportunity to view the spectacular private gardens of Sefton. Refreshments will be available throughout the weekend.

In addition to viewing the Artanica exhibition, enjoy an open garden visit on the same weekend. 'Durrol' at 800 Mt Macedon Road, Mt Macedon, dates from the late 19th century, and contains many excellent specimens of deciduous and evergreen trees.

A sunken garden exhibits Edna Walling's great design skills.

Entry into Sefton is \$8 per person, and \$5 per person into Durrol.

To book for groups of 12 or more and obtain a discount, call 0427 317 388. For information visit [www.mtmacedonhort.org.au/events/artanica](http://www.mtmacedonhort.org.au/events/artanica)



- \* Dining suites
- \* Sofas
- \* Buffets
- \* Beds
- \* Coffee tables
- \* Cushions
- \* Glassware

*Let Habitat help make your house a home*



102 High St  
Woodend  
Ph 5427 2100

65 Mair St East  
Ballarat  
Ph 5333 5525

*Furniture & Homewares  
Open 7 Days*

Regular business card advertisements (90mm x 55mm) are \$41 inc GST per month - book & pay 11 months and get 10% off.

All news items, articles and community news columns must be received by 15th of each month.



**bodywise**  
UNDERWEAR  
*comfort for women*

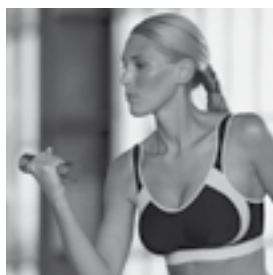
*It's time to get fit... exercise right*  
**ANITA**

**Sports Bra**  
**Extreme Control**  
for real women of all  
ages & stages.

Available in sizes **10 to 22 in cups B and C** and **10 to 20 in cups D, E, F & G.**

Suitable for **horse riding, gym, aerobics, team sports, cycling, jogging** etc ...

**Ring to discuss your special needs, or visit us at our Woodend showroom, free fittings by appointment.**



**1300 66 17 66**

[www.bodywise.com.au](http://www.bodywise.com.au)

register online or phone for a free brochure

**PO Box 804, Woodend Vic 3442**

**Shop 19, 130 High Street, Woodend**

*(we're right next door to the new Woodend Post Office)*

*Stocking Bodywise and Anita brands*



Historic HOME & GARDEN

**Open Wed-Sat 12noon to 5pm, Sundays 10am-5pm**  
*(open by appointment for groups).*

**Fairies & Elves Sunday 8th March, 2-4pm.**

42 Hunter Street, Castlemaine ~ Ph: 5472 1032

[admin@budacastlemaine.org](mailto:admin@budacastlemaine.org)

[www.budacastlemaine.org](http://www.budacastlemaine.org)



Fauna Conservation, Management and Research Consultants

Peter Myroniuk BSc (Hons), MSc

Zoologist

•Fauna Salvage & Relocation • Wildlife Management Planning •Fauna Surveys •Wildlife Reintroduction & Relocation Programs •Wildlife Population Modelling •Captive Population Management •Wildlife Lectures

Phone: 0431 25 24 77

Email: [peter@wildlifecsi.com.au](mailto:peter@wildlifecsi.com.au) [www.wildlifecsi.com.au](http://www.wildlifecsi.com.au)

**Joanne Duncan**  
STATE MEMBER FOR MACEDON **MP**

**Friends,**  
At the heart of good governance is honesty & accountability, as well as an understanding of the issues confronting the whole of society.  
If you have any concerns you wish to raise, please do so.  
Feel free to call me on:  
**5428 2138**



## Investing in our rail network

*Dear friends*

Much has been written about the State Government's Victorian Transport Plan. This Plan outlines the steps the Government will take to transform our public transport and roads system. The government will do this by delivering more trains and train tracks, and upgrade stations, and improve our roads so we can spend less time commuting and more time with family and friends.

I would like to highlight one of the Plan's key projects – the Regional Rail Link which will bring great benefits to the regional rail network. Passengers on regional trains often get caught behind metropolitan trains once they enter the metropolitan train system. This 'bottleneck' can cause time delays and frustration for many passengers.

The new Regional Rail Link will create a 44 kilometre twin track that will separate regional and metropolitan trains for the first time ever. This new track will remove the bottleneck, and go a long way to improving the reliability of Vline train services.

As part of the Regional Rail Link project, the Government will also add an additional 20 new carriages to the Vline network on top of the 54 carriages currently on order.

The Regional Rail Link project as part of the broader Transport Plan continues the State Government's investment in regional Victoria, and will ensure that we have the right infrastructure to be able to meet the growing needs of public transport and road users in the future.

*Warm regards*

*Joanne Duncan MP, State Member for Macedon*



**culinary & botanica**

- regional gourmet produce and hampering
- eclectic furniture and homewares
- unique cookware and servery
- rustic garden art and organic seeds

**120 Main Street, Romsey**  
**Ph: 5429 3636**  
**Open Tuesday - Sunday**

## 19TH HOLE SHOPPING CENTRE NOW AVAILABLE



### SHOP FOR LEASE PROMINENT POSITION

Size 90 Sq.Mtr.

**CONTACT IVOR JOHNSON**  
**B.H. 5427 4089**  
**OR 0407 273 961**

## Woodend RSL Women's Auxiliary

Recently the ladies of our Auxiliary organised the Wake for Mr Les Bryce, a long time member of the Woodend RSL. His widow Marie is also a long time and much valued member of our Auxiliary. The Wake was held in the Woodend Scout Hall and the Auxiliary would like to thank the Woodend Scouts for their generous use of their hall. Also thanks to the Auxiliary members who helped and prepared a splendid Morning Tea at such short notice.

Our first meeting for the year was held recently in the office of the RSL. Our girls have throughout the year managed to do several functions at the Woodend Golf Club, the Scout Hall and the Woodend Neighbourhood Centre. Our grateful thanks to everyone for their help and assistance during this most difficult time.

Discussion from our meeting to possibly hold our Saturday meetings on a different day arose. Some of our members find it hard to make the Saturday meetings due to work and family commitments. It was decided that Friday afternoon may suit and our AGM will now be held Friday 13<sup>th</sup> at 4pm. Members who were not able to attend our last Saturday meeting will be notified.

We are hoping that when we settle back into our own premises that more functions and money raising will be possible. We will be concentrating on an Easter Raffle and of course Anzac Day Badge sales and our Gunfire Breakfast and our own service.

We are still looking for new members, so ladies if you have an hour or two a month, please contact me on 5427 2225. You will be warmly welcomed, especially if you have any ideas for fundraising.

Betty Barned, Assistant Secretary

# CLEANER

**NEED SOME HELP AT HOME?**

**I can offer you an honest  
and reliable cleaning &  
ironing service at \$20 p/h**

**No job too small!!**

**Call Lisa on  
0407 305 726**



**Paul Groves**

Mobile 0414 928 491  
Phone 5427 2171

**Computer Sales, Repairs &  
Consulting**

Home and Office Networking  
Onsite Repairs and Maintenance  
New Computer Systems

paul@pcweirdness.com

## LIMESTONE SCULPTURE CLASSES

**Taking bookings now.  
Tuesday, Wednesday**

**Contact Dawn**

**0411 025 445 OR 54 272 121  
muddyduckdesign@optusnet.com.au**

Regular business card advertisements (90mm x 55mm) are \$41  
inc GST per month - book & pay 11 months  
and get 10% off.

## MACEDON RANGES SELF STORAGE

- \* 7 day access
- \* Individual units
- \* Affordable prices
- \* Insurance available
- \* **Now Fully Alarmed**

Store your:  
\* Cars  
\* Boats  
\* Business documents  
\* Furniture etc.

**Lot 3, Hoyle Court, Kyneton**  
(Off Beauchamp St)

**5422 1898**  
**5422 3488**

## Contemporary Blinds

"Quality Blinds at factory Direct Prices"

- Latest Styles/Fabrics/Colours
- Roller/Roman Blinds/Venetians
- Professional Installation Team
- Sunscreen/Blockout Blinds
- Automated Blinds
- Exterior Awnings

Ring Now for a **Free** In House Consultation/Quotation

Mark 0437 759013 Woodend Simon 0458 338995 Keilor East

*Where Style is Affordable*



## Wedding Announcement

Andrew William Brittain and Deborah Margaret Kirk of Quarry Road, Woodend, were married at St James Church, West Malvern, Worcestershire, England on January the 3rd, 2009. Andrew is the second eldest son of Mr and Mrs NW Brittain of Malvern and Deborah is the second eldest daughter of Mr and Mrs P Kirk of Malvern.

The bride, who was given away by her father was attended by the matron of honour, her twin sister Liz Pritchard, and bridesmaids Anna Kirk, her younger sister, and niece Emma Pritchard. The best man was Nick Brittain the grooms father. After a reception at Corse Lawn Hotel the couple honeymooned in the UK.

The couple now live in Woodend, Victoria where the groom is Operations Manager for the Melbourne based Dytecna Asia Pacific and the bride is a secondary school teacher at the North Keilor Catholic Regional College.

## Kathy's notebook

Our first summer here was 1996. On a hot windy day, the locals became agitated and nervous, and this was new to me. The most common comment was "I've lived through one bushfire, and I don't ever want to go through it again". I feel for those affected by what has happened this year, but also for locals forced to revisit their past. I'll not even attempt to write about it. Here's one about the washing that I wrote last Spring.

### The Raindance

The great water debate rages in any tank reliant house and The Big Dry suggests no relief to the "Get Out Of The Shower" debacle.

"There's a drought on ya know. We're nearly out of water. What are you DOING in there? You'll be sorry when the tank runs dry".

Where once the farmers came to town for essentials and a bit of socialising, "The Local Watering Hole" has taken on new meaning as the pub is eclipsed in the race for favour, with water now scarcer than beer and more expensive than petrol (at the servo).

While Woodend pubs remain Proud to be Pokie Free (so the stickers tell us), supporters of such entertainment should join the rest of us "Tank Reliants" at the Laundrette - a pokie alternative where you can still put your cash in a machine and enjoy the jingle of coins being returned.

As a kind of meditation, you can mindlessly watch your clothes go round and round for at least half an hour - no less entertaining than a poker machine - and the selling point is that you always get back what you put in .... Oh minus a sock or two.

Laundrette parking is at a premium, so try not to break your back on the three or four journeys carting wet washing

- Grid connected domestic solar systems
- Standalone solar & wind generator power systems
- Farm & residential solar gate openers
- Solar bore, dam & tank pumps
- Garden & landscape lighting
- Phone and data cabling



Contact Ray on 5426 2574 or 0416 085276

TITAB T08698 - BCSE P2026

## BGE

Joinery **Quality you deserve**

- Kitchens • Shop fittings • Bars

### BRAD ELSE

Mob: 0412 355 548 Ph: 5422 2571

Factory 2/27 Redesdale Rd., Kyneton

Visit our Showroom 166B Mollison St, Kyneton

11am - 5pm Fridays or by appointment

to the car, and when you've loaded everything in, banged your head and lost your keys, pause to look up and do a raindance (careful of your back). Then look down, where lying in the gutter you should find the keys, and hopefully that other sock.

While the Laundrette's humming machines are widely regarded for their soothing properties, useful to calm the nerves of a parched public, it seems a shame not to utilise redundant wall space. As we're all in the Laundrette now instead of the pub, I propose running a chook raffle to raise funds for a Big Screen for the duration of the drought.

What the hell! Put on a pizza night as well, and we can send the BLOKES to do the washing!

PS : Michael Bradley tells me it's "curtains" on the tele after the Great Coffee Machine Experiment went awry. Within 24 hours, someone had "regifted" it.

And happy birthday to the other 7 February's; Billy, John, Tim and Anne Louise's husband who had to cancel his party.

Submitted by Kathy Mexted

# Bradley's

## Curtains + Blinds

New showroom now open

Mon to Fri 9 - 5.30 + Sat 10 - 1



t 5427 2361 fx 5427 1019 72 High Street, Woodend VIC 3442

www.bradleyscurtains.com

## Building Environment

Architectural Design and Landscape

### Stanley Ziolkowski

Registered Practitioner

0439 988 277

- house plans
- documentation
- aesthetic design
- building approvals
- landscape design
- town planning submissions
- building renovations and extensions



## Woodend Visitor Information Centre

High Street Woodend

Ph 1800 244 711

## Stick to restriction times and save water to drink

Western Water is urging residents and businesses of Melbourne's north-west to come to adhere to water restrictions as summer is not over yet. "If people want to keep their gardens alive during a heatwave, there is absolutely no point pouring on water the morning a heatwave strikes," said Western Water Managing Director John Wilkinson.

"The art of good gardening in the sorts of extremes this region and most of Victoria has been living through for more than a decade lies in putting permanent watering alternatives in place."

Mr Wilkinson said the golden rules for gardens to survive drought were:

- Good and timely mulching so the earth is receptive to watering and can hold moisture rather than creating run-off that just cakes the soil surface and makes it harder for the water to be absorbed
- Rainwater and greywater recycling tanks and collection systems
- Underground soaker or drip irrigation systems hooked up to recycle greywater wherever possible
- Choosing wisely what to grow and where in your garden

He again urged town residents throughout the Western Water region to adhere to the Stage 3a water restrictions now in place and stick to the Target 155 campaign challenge of 155 litres per person per day. "As we have seen, targets are being exceeded during the most critical of extreme weather events," Mr Wilkinson said. "Garden watering is a major contributor to these blowouts. This is the longest drought on record and it is not over by a long stretch."



**FIREBIRD MOTOR REPAIRS  
CAR WASH**

31 URQUHART STREET  
WOODEND 3442

OPEN 7 DAYS  
Phone (03) 5427 2255



**FAIRHURST CONVEYANCING**  
and Secretarial Services

For all your  
**Property Transfers**

Ring Sue Fairhurst on  
**5427 2382**

27 Urquhart Street, Woodend  
MVCA & AIC

**OUTWARDS  
EXTENSIONS** 

DECKING      PERGOLAS  
FENCING

- WOVEN WIRE
- TUBULAR / POOL
- COLOURBOND




HOUSING  
GENERAL BUILDING  
CONSTRUCTION WORKS


ROSS  
**0418 364 125      03 5427 2849**



**MCKIBBIN  
CARPENTRY**



Total  
Financial  
Solutions  
Australia



*Helping you save  
for a  
"Rainy Day"*

**Bob Nixon**

B.Com., Dip.Ed., Dip.A.I.I., Cert. IV Fin. Plng., F.A.F.A.

Authorised Representative,  
Total Financial Solutions Australia Pty Ltd  
ABN 58 003 636 968 AFSL No.246545.

Shop 10, 34a Hamilton Street. Gisborne Vic 3437

**Ph: 03 5428 0123**  
**Fax: 03 5420 7710**

E: [bobnixon@netcon.net.au](mailto:bobnixon@netcon.net.au)  
W: [www.bobnixon.com.au](http://www.bobnixon.com.au)

*Amazing Grace*

Painting, plastering, tiling  
Kitchen & bathroom makeovers

**0415 901 277**

**Piano Teacher**

**RITA FERGUSON** Piano for Leisure  
AMEB Exam Preparation



Phone: (03) 5427 1663  
Email: ritaferg@bigpond.com

## The need exists ... the need persists

### SHELTERBOXES DEPLOYED IN FIRE DISASTER RELIEF

Delivery of at least 50 ShelterBoxes was made to the fire-ravaged Whittlesea area recently. At least Forty boxes are in Kinglake with 10 at the Whittlesea Recovery Centre. ShelterBox Australia General Manager, Jenni Heenan spent the day with ShelterBox Response Team [SRT] volunteers Eb Friedrich (Rotary Club of Woodend) and Mark Mallman (Rotary Club of Whittlesea), witnessing scenes she describes as, "unimaginable loss, destruction and suffering – it's like a war zone."

Jenni was moved by the sense of community, and especially the support of Rotarians in these areas. "When people saw what the green ShelterBoxes contain, they could not believe they were being given a tent, blankets, a cooker and other equipment ... and at no cost," Jenni said adding, "they are so grateful ... tearfully saying their need is now."

Each ShelterBox contains up to two 10-person dome tents, thermal blankets, water purification tablets, a multi-fuel stove, tools and other essential equipment. An initiative of Rotarian Tom Henderson, a former Royal Navy search and rescue diver, ShelterBox started in 2000 as a project of the Rotary Club of Helston-Lizard, Cornwall and is supported by Rotary clubs worldwide. ShelterBox, the largest Rotary Club project in the world has raised over \$45 million and sheltered over 600,000 people in 50 countries after some 75 natural and other disasters.

Donations can be sent to ShelterBox Australia, PO Box 790 Endeavour Hills Vic. 3802 or by accessing the donation section at [www.shelterboxaustralia.org.au](http://www.shelterboxaustralia.org.au)

For further information, please contact Jenni Heenan on 1300 881 913, or email [info@shelterboxaustralia.org.au](mailto:info@shelterboxaustralia.org.au)



**Macedon Ranges**  
**Real Estate Specialists**  
108 High Street, Woodend  
**Phone (03) 5427 2277**  
[www.connallys.com.au](http://www.connallys.com.au)  
[woodend@connallys.com.au](mailto:woodend@connallys.com.au)

rest assured it's  
**grobag**  
NOW AT ZAPPA-DO



The award-winning grobag baby sleeping bag is a wearable blanket that will keep your baby at a comfortable temperature all night long. A safe and sound night's sleep for your baby means peace of mind and more sleep for you. New range for babies up to 36 months.

**INCLUDES FREE ROOM THERMOMETER**  
**BUY ONE AND GET \$20 OFF 2<sup>ND</sup> ONE**

**ZAPPA-do** *Baby and You!*  
Shop 3, 87 High Street, Woodend. Ph: 5427 1270



**New!! 100% Organic**

- Zuii Organic Make-Up
- Little Innoscents Baby Products
- Nui Soaps -Palm oil free

**Weight loss & Wellness Challenge**  
*What do you have to lose?*



**FREE 12 week program**  
**-Support-Incentives-**  
**-Gifts-**  
**Register NOW**  
**5427 4237**

## Your Memories to DVD

- \* 8 mm/16 mm Films
- \* Compact VHS
- \* Mini DV
- \* VHS

Discount for Quantity



**Top Hat Productions**  
Ph: 5422 3930

### Sew Diverse: Embroidery Exhibition

As part of the Castlemaine Festival, The Castlemaine Branch of The Embroiders Guild is holding an exhibition of embroidery by its members. Although based in Castlemaine, many of the members live in the Macedon Ranges and form part of a very creative and talented group.

The embroidery on show is of a very high standard and beautifully executed and includes examples of cross stitch, surface stitchery, pulled thread work, ribbon embroidery, Hardanger, Blackwork, machine embroidery, felting and much, much more. Some of the items made for the Johnston Collection in Melbourne in 2007 are also on display.

The exhibition is being held at the Mt Alexander Golf Club rooms in Wimble Street Castlemaine, from Saturday March 28th to Wednesday 1st April. It is open between 10am and 5pm daily and admission is only \$5.

Whilst visiting the exhibition, patrons can also enjoy light refreshments in a very attractive setting, and perhaps purchase some of the quality handworked items which are on sale.

This is an excellent opportunity to view the work of a talented group of artists and take part in a wonderful festival.

Enquiries can be made on: 03 5472 2943.

Submitted by Jane Watters on behalf of  
the Committee of the Castlemaine Group

## CASTLEMAINE—GISBORNE CLEANING SERVICE

CHRISTINE ADAMS, FRYERS ROAD, ELPHINSTONE 3448

**Carpet Cleaning Specialists**  
**Duct Cleaning, Window Cleaning, etc.**

**For all your cleaning requirements**

- no job too big or too small -

*obligation-free quotes*

**Tel: 5473 3307 Fax: 5473 3310**

M.Ed. Admin., B.Ed.(Post Grad), B.A.



**Master Tarot Reader and Palmist**

Since 1966

etiennetarot@live.com.au  
Eteilla-Isis Pty Ltd

appointments 03 5427 2118



## TERRY'S GROUND CREW

# 0400 909 303

**ENJOY YOUR PRECIOUS WEEKENDS**

TERRY BARRETT

PO BOX 885 WOODEND 3442

**MACEDON RANGES  
VOUCHERS ACCEPTED**

**pensioner  
discounts  
available**



## WOODEND & DISTRICT PODIATRY

### John F. Shapland

Resident Practitioner

Reg. Department Veteran's Affairs

## 5427 2064

Business and After Hours

1895 Mt. Macedon Rd., Woodend

**All news items, articles and community  
news columns must be received by 15th  
of each month.**



**RIVERWOOD  
GROUP**

### Accountants, Advisors & Planners

Office Locations:

111 High Street, Woodend

Ph: 03 5427 8000

2/19 Bourke Street, Kilmore

Ph: 03 5782 1273

email: [admin@riverwoodgroup.com.au](mailto:admin@riverwoodgroup.com.au)

website: [www.riverwoodgroup.com.au](http://www.riverwoodgroup.com.au)

Riverwood Group can offer a *Total Financial Solutions* package for you and your family. Take a look at some of the services we provide:

#### Taxation

All your taxation requirements to suit individuals and small businesses.

#### Investments to Create & Protect your Wealth

Managed Funds, Indexed Funds, margin Lending and more

#### Planning for Retirement

Allocated Pensions, Centrelink Benefits and Payments

#### Stockbroking


Recommended lists, broking facility available, share updates

#### Superannuation & Rollovers

Advice, placements, Self-Managed Super Funds and Eligible Termination Payment Advice

#### Other Services

Home & Investment Loans, Business Loans and Leasing, Income Protection, Life Insurance, Professional Indemnity, Estate Planning and more.



**ARCHITECT**  
COMMERCIAL  
DOMESTIC  
ALTERATIONS

---

**ARKITURA** 0429 844 800  
pty ltd

**IAN SCOTT** B.ARCH(HONS) EDIN. ARBV  
PO BOX 806 / 49 WATERWORKS RD / WOODEND VIC 3442

## Woodend Landcare News

We get a lot of favourable comment from people about the work we do around Woodend. Most people seem to appreciate the gradual disappearance of weeds and the appearance of plantings of local native plants in their place.

Our main focus over recent years has been the public land along the creek from the Information Centre to Romsey Road, a distance of about 2 kilometres. There are also members working hard in the Quarry Road, Bawden Rd/Sullivans Rd and Ashbourne Road areas - again, these are all public land.

However, the 2 kilometre stretch along the Five Mile Creek is in dire need of a greater level of maintenance. We are doing our best at regular working bees and the council also plays a part with mowing and weed spraying, but it is not enough. This is a plea to those of you who enjoy walking or cycling along the track to consider putting something back by assisting us in the unglamorous job of controlling the weeds. You don't have to be a farmer or have lots of land to be in Landcare.

There are 3 points we would like you to think about:

### **PLANT GUARDS**

Many of our plantings on both sides of the creek have plastic plant guards. Some people have been removing them, probably because the plants have grown beyond the top of the plastic. We appreciate the gesture but would ask that the guards be left in place as they make spot spraying and whipper-snipping between the plants much safer for the plants as they protect the lower leaves. When the guards are clearly redundant, we will remove them.

### **COLES WINDOW**

We now have an exclusive window to advertise our group and we ask you to look at it now and then. We plan to also advertise regular working bees and other events in this window.

### **ADOPTING A SMALL AREA**

Some of our members have assumed responsibility for looking after small sections of about 200 metres of the track along the creek. This mainly involves periodic weed spraying and generally keeping an eye on emerging problems. The time taken to do this for each member is about 2 full days per year in bits and pieces. If weeds are getting out of hand, the member advises the group and either a working bee is scheduled at the site or the council is asked to help out.

Our aim is to recruit local residents or track users to also adopt a small section of their choice. To cover the full 2 kilometres we would need about ten people. We don't necessarily expect you to do lots of weed spraying. What we ask is for these helpers to regularly "keep an eye" on their patch and let the group know of any problems such as new weed infestations, fallen trees or damage to plantings that might require attention. They could also perhaps do some basic "cut and paint" weed control from time to time. This can actually be done as part of routine walks and involves no skin contact with herbicide and is completely clean and safe.



## T.J. SCOTT & SON

### F u n e r a l D i r e c t o r s

- Serving the Macedon Ranges for almost 70 years
- Available 7 days a week, 24 hours a day
- Specializing in Pre-paid funerals

For further information, call the Scott family:  
John, Kelly, Jack, Paul & Daniel.

5 Piper Street  
Kyneton  
54226455

46 Aitken Street  
Gisborne  
54284155

[www.tjscottandson.com.au](http://www.tjscottandson.com.au)  
[info@tjscottandson.com.au](mailto:info@tjscottandson.com.au)

For anyone prepared to make a commitment along these lines for a year, we would provide the following assistance all at no cost:

- A short one-on-one training session at an agreed time about weeds, native plants and the clean, simple techniques of "cut and paint".
- A high visibility Landcare safety vest
- Landcare insurance whilst working
- Landcare membership for one year
- Pair of secateurs
- Small applicator bottle full of Roundup Biactive and dye.
- Contact details for help if required

We believe that the job is currently beyond our resources and those of the council. So if we want the area to continue to look attractive and if we want the existing 12,000 plants to continue to thrive with all the benefits that will bring to the wider environment, we ask you to get in touch and arrange for your training session. You will really be making a difference, but at a time and place of your choosing.

Please contact Peter Yates 5427 3221 or Jo Clancy 5427 1909



**24sevenalarms.com.au**

**24 Seven Alarms Aust Pty Ltd**

- Alarms installed, Serviced and Monitored
- Data cabling and phone line installation
- Digital Video Surveillance
- Medical Alert Systems
- Access Control Systems PSBL: 732-083-90s

**1800 247 111/ 03 5427 4411**  
**sales@24sevenalarms.com.au**  
**Now Based in Woodend**

# This page is proudly sponsored by the 19th HOLE SHOPPING CENTRE



## Upcoming Events & Meetings

### March

- 4 Carlsruhe Community Planning Group 7.30 pm at Carlsruhe CFA
- 7 Home Produce Exchange 10 am Neighbourhood House
- 7-9 Lions Club Art Show St Ambrose Hall
- 9 Labour Day Public Holiday
- 11 RSL AGM 7.30 pm
- 13 World's Longest Lunch at Hanging Rock phone 5421 9638
- 23 BaBs Meeting
- 27 WWAF Launch concert Aleksandr Tsiboulski 8pm St Ambrose Church \$15/\$10
- 28 St Ambrose Carnival
- 28 Music event at MAD Gallery, Lancefield 7pm \$28
- 28 Sew Diversity exhibition opens
- 31 Woodend Heritage Society meeting

### April

- 4 GREAT Grand Tour
- 5 MAD ride www.mbtc.org.au
- 5 Daylight Savings ends 3am
- 6 Carlsruhe Landcare meet 7.30
- 8 Carlsruhe Community Planning Group 7.30 pm at Carlsruhe CFA
- 10 Good Friday
- 11 Kyneton High School 1960s reunion Bendigo
- 12 Easter Sunday
- 13 Easter Monday
- 18-19 Artanica @ Sefton & Durrol open garden, Mt Macedon
- 25 ANZAC Day

### May

- 4 Carlsruhe Landcare meet 7.30
- 6 Carlsruhe Community Planning Group 7.30 pm at Carlsruhe CFA

### June

- 1 Carlsruhe Landcare meet 7.30
- 3 Carlsruhe Community Planning Group 7.30 pm at Carlsruhe CFA
- 5-8 Woodend Winter Arts Festival, Queen's Birthday weekend
- 8 Queen's Birthday public holiday

### October

- 4 Daylight Savings starts 2am
- 14 National Ride to Work Day www.bv.com.au

PLEASE SEND US YOUR FUTURE DATES

### COMMUNITY GROUPS CONTACT DETAILS

Australian Breastfeeding Association, Heather 5427 2398  
 Cobaw Thursday Walking Group 5427 3340  
 Daylight Masonic Lodge, 5427 2480  
 1st Woodend Scout Group, 5427 3788 Sarah  
 Friends of Macedon Ranges Library, Chris/Bill 5427 2469  
 Garden Club 5422 6062 / 5427 3340  
 Living Word Christian Church 5429 6327  
 Historical Society, Courthouse, 5427 2523  
 Macedon Ranges & District Motor Club, 10 Webb Cres, New Gisborne 1st Wednesday each month 8pm  
 Macedon Ranges Animal Aid, Buffalo Sports Stadium, 5427 1752  
 Macedon Ranges Bridge Club, 5427 4440  
 Macedon Ranges Families of Children with Disabilities Support Group, 5427 3365  
 Macedon Ranges Residents Assc. 5427 1481 or 5427 2651  
 Macedon Ranges Communicators (ITC), 5427 2669  
 Macedon Ranges Photographic Society, 1st Tues of month, Ron Mathews 5427 3284  
 Macedon Ranges Social Club (activities for singles over 35) phone 9740 5517 or 9744 2697  
 Neurological Support Group "Contacts", Woodend Community Centre  
 Panic & Anxiety Group, 5427 8256  
 Parents & Carers of Children with Special Needs, Woodend Community Centre  
 Probus, 5427 2003  
 R.S.L., Anslow Street 5427 3122  
 Red Cross, 5427 1260  
 Rotary Club of Woodend, meetings weekly at Vic Hotel Thursdays 6.45pm, Kai 5427 1029  
 St. Mary's Guild, 11am, 4th Wednesday of month  
 St. Mary's Street Stall, 9-12 noon outside Woodend Newsagency (2nd Sat of the month)  
 Woodend & Five Mile Creek Landcare Group, Jo 5427 1909 or Doug 5427 0666, 3rd Tues Meeting, 4th Sunday Working Bee  
 Woodend Angling Club, RSL Hall, 5427 2395  
 Woodend Art Group, Railway Station, 5422 6172 or 5427 1659  
 Woodend Business & Tourism Association, Cori 5427 3434, 2nd Tues of month (BATA)  
 Woodend Lions Club, Meetings 2nd/4th Wednesday each month, ph Maureen Dougherty 5427 4949  
 Woodend Model Railway Club, Buffalo Stadium  
 Woodend Pony Club, 5427 2793  
 Woodend Senior Citizens Club, Comm. Centre  
 Woodend SES Training Nights, Urquhart St  
 Woodend Winter Arts Festival Inc., Jacky 5427 1560  
**CLUBS: PLEASE KEEP THESE DETAILS UP TO DATE**

- Ian Marks Liquor  
5427 3961
- Blue Orange Concepts: homeware  
5427 4500
- Kosmac & Clemens: optometrists  
5427 4577
- Woodend Pizza & Pasta  
5427 3777
- Coles Supermarket  
5427 2377
- Collier Office & Business Assist  
and Woodend Copy Centre  
5427 3092
- Pets Haven  
5427 3603
- Mitre-10 Woodend Hardware  
5427 2314
- BP Woodend  
5427 2248
- Target Country  
5427 4366
- Macedon Ranges Travel Services  
5427 4777
- 1 Shop AVAILABLE FOR LEASE**
- Woodend Cycles  
5427 2662
- Salvation Army Family Store  
5427 4421
- Loose Change Bargains  
5427 4466
- Bodywise Underwear  
1300 66 17 66
- Australia Post  
5427 2600
- Jasper Art & Handwork Supplies  
5427 4455
- The Spa Beauty Therapy Centre  
5427 3322
- HIGH STREET SHOPS**
- Color Me Cooper: clothing/gifts  
5427 1454
- Chelleon For Hair  
5427 3246
- Not Just Fudge  
5427 2210
- RT Edgar Real Estate  
5427 1222
- Woodend Bakery Cafe  
5427 3434



# Woodend Care for Kids We're back!

Supporting the community by providing  
the best care for your child.

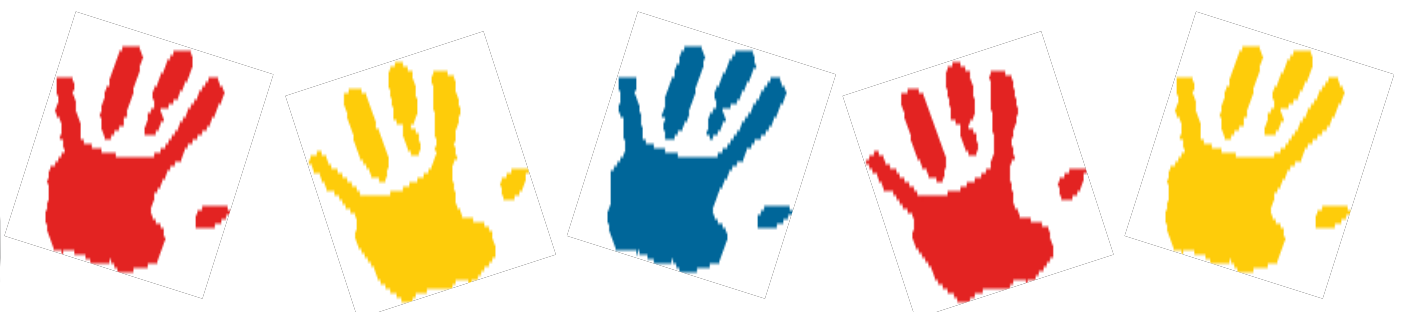
## Convenient, professional local care

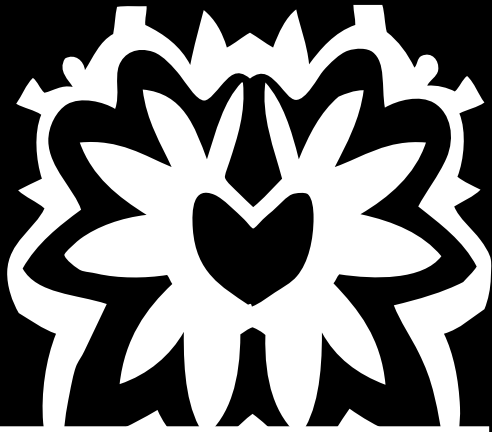
- Long Day Care
- Before/After school care
- Qualified and experienced staff
- New music & movement program
- Delicious, nutritionally balanced meals
- Occasional care
- Warm & nurturing environment
- Vacational care
- Fully Accredited
- CCB available
- Kinder & School drop off & pickup

**Ph: 5427 4309 or visit us any time**

**72 East St Woodend**

1 Week **FREE** Child Care when a  
permanent booking is secured



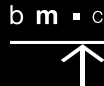


**ART AND DESIGN CONCEPT STORE  
FOCUSED ON LIFESTYLE TRAVEL  
AND MORE...**

**WE ARE NOW TRADING FIVE DAYS  
MON+THURS+FRI+SAT 10am-5pm  
AND SUN 11am-4pm**

**97A**

Phone 03 5427 1711  
High St, Woodend VIC 3442  
www.bmc97a.com.au



## News from Newham

The Newham Mechanics Institute send their condolences to those who have had losses in the bushfires this month.

We are grateful to our CFA blokes who keep their eye out for us and help others throughout this season and to the Newham Ladies Auxillary who support them too with food and so on when they man "The Shed" on total fire ban days and to those who donate on Race Days at Hanging Rock and so on – it takes a lot of effort to keep our CFA in good shape. CFA can always use new people and there a many different roles within it, you don't have to fight fires to be in the CFA – if you are interested then ring Kate Lee on 5427 0939.

Tenders for the Demolition and Building at the Hall are now closed and we are in the process of going through them, perhaps by the time you read this we will have demolished the toilets and side buildings – we wait [at time of writing].

Val Sutton, who has worked tirelessly for the Newham community, had a milestone birthday in February and we wish her very Happy Birthday and thank her for her contribution to our community over 30 odd years – need help with anything – ask Val, her energy levels are inexhaustable it would seem and she is always willing and happy to help out. For me she has been one of those really good people to have in your life – a friend.

Submitted by Sally Stabback

## The fencin' fella

- colorbond
- tubular
- timber
- steel picket
- pool

## Mini Earthmoving Kanga Loaders

Attachments include:  
rotary hoe, soil leveling bar,  
4 in 1 bucket, trenchers,  
post hole diggers, tipper

**SHAUN BARRON**

**MOB: 0407 232 900 or 5422 3488 AH**

## Woodend Neighbourhood Centre

### Bush Fire Education

- Do you know what to do in a bushfire?
- Do you have a detailed written bushfire plan?
- How can you give your house the best chance of survival?
- How do you decide when to leave and when it is too late to leave?

Run over two Saturdays this course will cover bushfire behaviour, how houses burn down, personal safety, how to prepare and how to develop a comprehensive and detailed plan.

Run by Kate Lawrence who is employed by the CFA as a community educator.

Part One: Saturday 7 March 9.30am - 12.30pm

Part Two: Saturday 21 March 9.30am - 12.30pm

No cost, held at Woodend Neighbourhood Centre, 47 Forest St, Bookings: 5427 1845

### Woodend Neighbourhood Centre

March is an interesting month every year and this year is no exception. Our Annual General Meeting is at 1pm on Monday 16 March and everyone is welcome. If you would like to become involved in your neighbourhood centre, then consider taking a position on our Committee of Management. New members are made very welcome.

We have many accredited courses running this month so if you need skills for work why not consider these courses being run by Bendigo TAFE

- Construction Induction – construction industry OHS
- Intro to Basic Coffee Preparation
- Responsible Service of Alcohol
- Food Hygiene

We are also running Level II workplace first aid, making a wood-fired pizza oven, mosaic workshops and glass fusing with Ettore, our popular beginner and continuing digital camera classes will also be running.

We try to offer many opportunities for people within our community and welcome new tutors and volunteers. Please call into see us at 47 Forest St between 9-4.30 Monday, Wednesday, Thursday, and 9-3 on Tuesdays and Fridays. Alternatively call 5427 1845 or visit [www.wnci.websyte.com.au](http://www.wnci.websyte.com.au)

### Bush Fire Appeal

The Woodend Neighbourhood Centre will coordinate specific request for goods and services required by bushfire affected communities.

As requests come to us we will advise the community what is needed.

Sarah Campbell, Coordinator

**Alexander Technique**  
Reduce, manage or eliminate **stress headaches, muscle and joint pain**. The Alexander Technique addresses the underlying problems and puts you back into control for yourself.

**Margaret McGill** has been teaching **Alexander Technique** for more than 20 years.

Contact **Margaret** on **5428 6461** for further information.



## Last-minute dash can be a deadly option

One of the great tragedies of the recent Black Saturday fires was the number of people who were killed in cars while trying to flee. Unfortunately, as has been shown so many times previously, such a late decision can prove to be fatal.

Every decision you make during a fire is critical. Leaving late, staying with an unprepared property or returning home at the wrong time can all have serious, life threatening consequences.

Remember, if your plan is to leave when a fire is burning in your area, do so before the fire threatens and road travel becomes dangerous. Late evacuation is a deadly option. Declaration of a Total Fire Ban, or other high fire risk days, should be your trigger to put your plan into action.

### ***Make sure you have a Bushfire Plan***

To get ready for a bushfire, people in areas of high fire risk are advised to prepare a Bushfire Survival Plan. This is a well thought out plan about how you will prepare and respond to a fire in your area.

Part of this Bushfire Survival Plan is deciding if you are going to leave early on a high fire risk day, before a fire threatens and road travel becomes hazardous, or stay and actively defend your property.

If you want to know more, or to find out how to prepare a bushfire survival plan, come and see us at the Woodend CFA, ring the Victorian Bushfire Information Line on 1800 240 667 or visit [www.cfa.vic.gov.au](http://www.cfa.vic.gov.au)

### ***Good preparation is not a last minute thing***

Many people decide to stay with their home and there are many examples of people who have successfully defended their home during a bushfire. However defending a home takes many hours of physical work under fairly strenuous conditions. You need to be physically and emotionally able to cope. And you will need to have done a lot of clearing work around your home.

Even if you decide to leave early you may be forced to stay if a fire threatens your home quickly. You need to know what to do if this happens.

During a bushfire stay alert. Listen to your local ABC radio. Keep in contact with your neighbours. And watch for smoke. You also need to listen about the condition of the fire – how big it is and how fast it is spreading. The tragedy is that spread of a huge fire can be so rapid.

Don't wait to see flames before deciding to leave your home.

"People sometimes adopt a wait and see attitude and stay too long to see what will happen," Woodend CFA Captain Mick Christie said.

"It is not possible for firefighters to knock on every door to give warnings, as they will be fully occupied monitoring conditions and fighting the main fire. Instead, people who live in high fire danger areas are advised to plan and be self sufficient," he added.

"Leaving your house at the last minute is fraught with dangers. Smoke will make visibility poor and it is easy to lose your way. It can be very difficult to work out which way the fire is going and you won't know about spot fires that may have started".

### ***Never attempt to flee as a fire approaches***

If you haven't prepared properly and find yourself in this circumstance, grab whatever you can such as mops and buckets to extinguish small fires.


Shelter from radiant heat inside your home while the main fire front passes. Stay alert and when it is safe to leave, after the fire front passes, move to unburnt ground. Your unprepared house may have caught fire.

Returning to a house during a bushfire to rescue pets or retrieve valuables is also very dangerous. People are advised to only return to their properties when emergency services say it is safe. It isn't smart to avoid road blocks to return to your property during a fire. They are in place for a reason. You are putting yourself and those who will attempt to rescue you in unnecessary danger.

If you are caught on the road, don't get out and run. Pull to the side, preferably in an area clear of tall trees and long grass. Put your hazard lights on, close the windows, cover up exposed skin with a woollen blanket and get down as low as possible. Only when the fire has passed do you get out and move to safety.

### ***Woodend CFA volunteers fight more big fires***

Just 2 weeks after Woodend and neighbouring brigade volunteers fought the fire that threatened Woodend, we were involved in Strike Teams that spent nearly a whole week in the Whittlesea/Wallan/Kinglake area. The strike teams involved vehicles from Woodend, Newham, Hesket-Kerrie, Gisborne, Macedon, Mt Macedon and Riddells Creek working 24/7 on a range of tasks. 27 individual volunteers from the Woodend



Traditional Tibetan Therapies  
for  
Health & Well Being

Ku Nje - Tibetan Massage  
Tibetan Mantra Healing  
Reiki  
Crystal Healing  
Dach Flower Remedies  
Meditation classes

*Karen Stone*

Westpac Building, 75 High Street,  
Woodend  
For appointments please phone:  
0400 688 599

Brigade alone gave up their time to work in dangerous conditions each on a 12 hour shift, with some members going two or three times. Well done team!

**Neighbours, everybody needs good neighbours!**

One of the valuable lessons we learn from difficult times is the importance of being aware of those who live in our neighbourhood, so that we can all work together. One of the great lessons to come out of the recent Black Saturday fires is the amazing sense of community that exists, but also the importance of developing a strong neighbourhood network. Now is the time you should work with your neighbours, BEFORE another fire threatens our area. Here are a few helpful ideas:

- *Get to know your own neighbours and share your Fire Plans*
- *See if there are any elderly or disabled people in your area so that you can help them*
- *Start a Phone Tree so that people know who is home and who has gone*
- *Start a Community Fireguard Group with the help of the CFA*

For further information contact Captain Mick Christie on 0419 870 601 or 1st Lieutenant Mike Dornau on 0409 093 935, call the Woodend CFA on 5427 2356, or visit the station in Urquhart Street or our website: [www.woodendcfa.org](http://www.woodendcfa.org).

The Woodend CFA is a volunteer emergency service, committed to Creating a Safer Community.

Submitted by 1st Lieutenant Mike Dornau, Woodend CFA



**10% off Summer Rugs for March only**

Variety of Rugs and Saddlery in Store

Opening hours Mon - Fri 9am to 4.30pm Sat 9am to 12pm

**61 Urquhart Street Woodend Vic 3442**



**Grantra**  
HOME IMPROVEMENTS  
Specialising in Bathroom Renovations

PO Box 736, Woodend 3442  
**0418 175 877**  
[www.grantrahomeimprovements.com.au](http://www.grantrahomeimprovements.com.au)

**KYNETON**  
**EQUIPMENT & PARTY**  
**HIRE**

**FOR ALL YOUR HIRING NEEDS**

8-12 BEAUCHAMP ST **PHONE (03) 5422 2311**  
KYNETON VIC 3444 **FAX (03) 5422 2930**

Email: [kynhire@bigpond.net.au](mailto:kynhire@bigpond.net.au)  
website: [www.kynetonhire.com.au](http://www.kynetonhire.com.au)

**Macedon Ranges BaBs**

Apparently school is back and its time to get back into some sort of routine! So pencil in BaBs for the 2nd & 4th Mondays of the month – during school terms and excluding public holidays, which doesn't leave us with that many sessions in the first half of the year.

As such we will be looking at some social gatherings on alternate Mondays and potentially a highly sought after guest speaker on a Tuesday. I'll be sure to keep you informed.

Here's the session information – please feel free to forward to anyone and everyone who may be interested – new faces are always welcome!

23 March: Art therapy for birth: a look at how art therapy can be used in healing birth trauma, visualising your ideal birth and connecting with baby during pregnancy. Local counsellor JESS MAUDE, who also has a graduate diploma in Art Therapy will conduct this very informative topic.

27 April: Conception and Contraception: guest speaker from WOOMB will discuss "The Billings Method: Using the body's natural signal of fertility to achieve or avoid pregnancy" which was developed in the 1960s by Melbourne based Dr Evelyn Billings and has been hailed as 'knowledge every woman ought to have'.

11 May: Conscious Parenting: a discussion about breaking negative patterns experienced in our own upbringings and being conscious, creative, collaborative, competent and compassionate in our parenting.

Macedon Ranges BaBs (birthing and babies support) an initiative of Maternity Coalition & supported by Macedon Ranges Shire Council [www.woodendweb.org/babs](http://www.woodendweb.org/babs)

★ ★ **Polaris**  
★ Financial Services Pty Ltd

**Financial Planners & Mortgage Brokers**

*Local and city appointments available.*

**Ph 5427 3347**

**Strategic Financial Advice**

**Retirement Planning**  
**Investment Advice**  
**Life, Income Protection & Personal Insurances**

Anneliese Willmott is an Authorised Representative (No. 268440) of Australian Finance Services Pty Ltd (AFSL 27239).

**Specialist Loan Service**

**Home Mortgages, Personal Loans and Credit Cards**  
**Accredited with 15 Major Lenders**

Peter Willmott Cert IV Finance, AML/CTF & MFAA Member

Polaris Financial Services Pty Ltd ABN 99 131 10 5514 is a corporate Authorised Representative (No. 327962) of Australian Finance Services Ltd (AFSL 297239).

# TRADE & SERVICE DIRECTORY

## ANIMAL CARE



*An alternative to kennels & catteries*  
A reliable home care service for pets & farm animals, servicing the Macedon Ranges since 2003  
Ph: Judy on 5427 1352

## YOUR ADVERT HERE

Your advert here  
for \$27  
per month

## STONELAYING & PAVING



Stonemason & Paver specialising in  

- Retaining Walls
- Drystone Walls
- Stone Houses
- Paving
- Over 20 years' experience

Cameron Dunn  
Ph (03) 5427 4778 Mob 0429 162 589

## PSYCHOLOGIST

**Sam Luxemburg**  
Registered Psychologist

- Personal Counselling in Woodend & Romsey (Medicare rebate available)
- Counselling Training
- Myers-Briggs personality testing

Phone: 0428 270 401  
www.luxcollege.com.au

## COUNSELLING

**Keryn Allan** COUNSELLOR  
Dip. Prof. Couns., M.A.C.A.

Grief & Loss  
Trauma  
Stress, anxiety & depression  
Anger management  
Workplace issues  
Behavioural problems

Phone: 0417 011 300  
Email: kezallan@ozemail.com.au

## DRESSMAKER

**Beryl's Tailoring**



DRESSMAKING, ALTERATIONS,  
BRIDAL, EVENING & DAY WEAR,  
LADIES AND MEN'S REPAIRS

Beryl Bachelor  
QUALIFIED DRESSMAKER, NEWHAM

BY APPOINTMENT ONLY  
MON TO FRI 9 - 5

5427 0568 0418 510 179

## TREE SERVICES



- tree pruning / removal • stump removal
- tree planting / transplanting • rope & harness climbing
- confined space removal • fully insured

Professional commercial & residential tree maintenance  
all work carried out by qualified arborist

Call Anthony 0417 059 969

## HOME MAINTENANCE

Home & garden maintenance &  
landscaping service including  
decking, pergolas, carpentry &  
painting.

Stuart 0409 150 629  
AH 5427 2465

## QUIT SMOKING

**QUIT CIGARETTES**

In Sixty Minutes

**GUARANTEED!**

Lose Weight For Life

Call Now

**1300 737 146**

## RUBBISH REMOVAL

**CALDER ENVIRONMENTAL SERVICES**

Your local supplier of rubbish removal skips  
from 2 to 15 cubic metres.

**We deliver • You fill • We remove**  
**WE BUY OLD CARS & SCRAP METAL**  
Scrap bins supplied

Conditions apply

Prompt reliable service  
**0428 509 525**

## GATES, FENCING, PAVING

**GATES, FENCING & PAVING**

- Automated Gates
- Colorbond Sheet Fencing • Pool Fencing
- Timber & Steel Picket
- Gates Made to Order

FREE MEASURE & QUOTE

PHONE LAURIE 0419 005 185  
5427 1192

## METAL GATES

**BVM Metalcraft**

SPECIALIZING IN OLD WORLD AND  
MODERN STYLE GATES

STEEL BALUSTRATING INCLUDING STAINLESS STEEL  
ROPE AND WROUGHT IRON, PUNCHED RAIL FENCING  
ALL MATERIALS USED ARE  
GALVANIZED OR ZINC PLATED

FINISHED IN YOUR CHOICE OF POWDERCOAT  
OUR DESIGN OR YOURS

METAL POLISHING - ALLOYS, BRASS, STAINLESS STEEL  
CONTACT BEN 0422 288 768  
FOR A FREE QUOTE

## FIREWOOD

**O'Callaghan Bros**  
REDGUM FIREWOOD SUPPLIERS  
**SPLIT RED GUM**  
**FIREWOOD**

Excellent Quality Delivered Dirt Free  
Ph 7 days

0407 036 800 0429 957 091

## YOUR ADVERT HERE

Your advert here  
for \$27  
per month

## PLUMBING SERVICES

**Need a plumber?**

For reliable, professional, local service

- Domestic
- Commercial
- Industrial

Maintenance  
**Work**



Call Mal: 0423 204 277 5427 3315

Trade Page Ads are \$27 per month inc GST. Pay for 11 months in advance and receive 10% discount.

# Heritage Society News

In 2000 we published a small booklet entitled "Hanging Rock Memories and other poems" by Denis Fitzgerald. Denis was born in Chanters Lane, Fern Hill in 1877, the son of Dennis Fitzgerald who had arrived in Australia in 1852.

In the introduction to the twelve poems which we included in this collection, we noted:

(Denis Fitzgerald was) "An extremely well read man with a great knowledge of history and geography, he was also a keen amateur musician, singing and playing his accordion at many local concerts." Without doubt, Denis would have often gone to the Ashbourne dances which he described in the following poem.

## **OLD TIME DANCES (Ashbourne)**

*When night comes down to veil the earth  
And twilight steals away  
And lights burst forth like shooting stars  
Along the dark highway  
And clouds glide on like homing birds  
That seek for sanctuary  
Before the kindly fire light glow  
I sit in reverie  
Of those short hours when joy was king  
In the heights that will come no more  
Of the bright parade of youth and maid  
Upon that old school floor  
Of the gaiety that rippled around  
When stirred by the subtle tune  
As we danced the fleeting hours away  
Until dawn came too soon  
Pictures arise and fade again within the fire's dull flame  
Of some who have joined the Heavenly Throng  
Of some who are only a name  
But memory will  
Like some sweet melody  
Those friends I prized when the heart was young  
And those nights of revelry.*

Denis Fitzgerald lived until 1954 and we were delighted to make contact with his son Des at the time of this publication. We also found that there were a number of our own volunteers at the Centre who could remember going to the dances at Ashbourne, as it was, after all, only about eight miles down the road from Woodend.

People in Ashbourne – or Campaspe as it was known before the beginning of the last century – have always had strong links with Woodend and in view of this, we have decided to focus on this area at our next meeting. This will be held on Tuesday March 31 at the Courthouse in Forest Street. It will begin at 3pm with a short business meeting and afternoon tea. Informal presentations from present or past Ashbourne residents will then be given with an opportunity for those attending to make their own contributions. The programme will finish at 5 pm.

**All news items, articles, advertising bookings and community news columns must be received by 15th of each month.**

Non members with an interest in this area are cordially invited to join us. We also hope that anyone with Ashbourne related photographs or other records will drop them in to the Court house, preferably on a Wednesday before the meeting for display on the afternoon. They can also be copied if they are not already in the collection. The Local & Family History Resource Centre is open every Wednesday and in addition, we have a secure posting box on the Court House verandah where items can be safely left. (Please include your name and contact details)..

If you would like a copy of Denis Fitzgerald's poetry, we still have a few copies left. We have been thinking about printing another run, and will do so if there is enough interest. The booklet costs just \$6.60 collected or \$10 posted. Orders to PO Box 124 Woodend, 3442.

Submitted Janet Hawkins.

## Kyneton Physiotherapy

ROBERT ROUSE

B. App. Sc. (Physio) Member A. Physio. Assoc.

**Move Well. Stay Well!**

Registered for Comcare, TAC, W/Cover, Vet. Affairs  
NO REFERRAL NECESSARY

74 High St., (Corner New St.,) Kyneton

**20 years on High Street! 5422 2290**

## Living Word Christian Church

Meet 

**EVERY SUNDAY**

**6PM**

**WOODEND COMMUNITY CENTRE**

**FOR MORE INFORMATION:**

**5429 6327**

**livingword@iprimus.com.au**

## UP AND COMING EVENTS

- BOUNDARIES COURSE: THIS TERM
- TRIVIA NIGHT: 1<sup>ST</sup> MARCH
- NO SERVICE ON THE 8<sup>TH</sup> MARCH
- CAFE NIGHT: AMERICAN STYLE BBQ 19<sup>TH</sup> April

**Living Word Christian Church**

## Council Activates Emergency Plans

After acknowledging at a recent planning committee meeting the immense loss to people across the state through the recent bushfires, Macedon Ranges Shire Council's Mayor, Cr John Letchford is encouraging residents to tune in to ABC Radio for news and information on days of high fire risk.

Following CFA advice of high fire danger for the weekend of 7/8 February, Macedon Ranges Shire Council set up the Municipal Emergency Coordination Centre (MECC) in Gisborne on Friday night, 6 February, and a control room at its depot with a roster of staff on standby to help clear any fallen trees in cooperation with the emergency services.

Since then, Macedon Ranges Shire Council has been working in partnership with neighbouring municipalities and local emergency services to respond to needs as they have arisen.

On Saturday 7 February, 15 members of Council's works crew were out from 8.30am until 3.30am on Sunday morning, then from 6am on Sunday until 4pm that day, clearing limbs and keeping roads clear. Upon news of the Redesdale fire, Council set up a Relief Centre at Kyneton Town Hall for those wanting to leave home early, which was attended by approximately 50 people.

Mayor, John Letchford said it is part of Council's Municipal Emergency Plan to establish a relief centre if a bushfire is a threatening local population centres.

"In this situation, a relief centre will be opened as a safe place to go for those people not intending to stay and actively defend their home.

"The location of the Relief Centre is likely to be in one of our major townships. The exact location will be determined on the day, and will depend upon the location of the fire and its predicted behaviour. This is when residents need to tune in to ABC radio," he said.

Since Sunday 8/2, Macedon Ranges Shire Council's works crew have continued to clear local roads and have assisted with clearing roads in the Mitchell Shire affected by the Redesdale fire, around Glenhope. It has also buried hundreds of sheep on a property at Sidonia.

On Monday night, Macedon Ranges Shire Council's Municipal Emergency Resource Officer (MERO), Barry Whelan spent the night in the Mitchell Shire Council's Municipal Emergency Coordination Centre (MECC) at Broadford to relieve the Mitchell Shire's MERO and Deputy MEROs.

Macedon Ranges Shire Council also worked with Mt Alexander Shire Council to establish a recovery centre at Metcalfe Town Hall for residents affected by fires around Redesdale, Baynton, Sidonia and Mt Alexander.

On Monday 9 February a community meeting was held at the recovery centre, where CFA and Victoria Police provided an update on the current fire situation and a range of agencies provided information on the support that is available to those affected.

### **Key points for residents to note:**

Relief Centre: will be established if a bushfire is threatening local population centres. A relief centre will be opened as a safe place to go for those people not intending to stay and actively defend their home. The Relief Centre will provide information and support for community members as well as first aid if required.

The location of the Relief Centre is likely to be in one of the shire's major townships; the exact location will be determined on the day, and will depend upon the location of the fire and its predicted behaviour.

Some people in the community remember the old "Fire Refuge" sites that were set up many years ago. They were often located at a local building or sports ground. We no longer use Fire Refuges as we cannot assume they will be safe.

## Welcome to the Woodend Star

# Kids Club

## March Birthdays

2nd	Joshua Peake .....	Turns 11
6th	Ruby Studley .....	Turns 8
5th	Jake Lever .....	Turns 13
7th	Lucy Marsh .....	Turns 13
17th	James B.D. Cachia .....	Turns 12
18th	Emily Jane Ridington .....	Turns 7
19th	Georgia Beddoes .....	Turns 13
20th	Liam Patrick Callaghan .....	Turns 2
21st	Charlotte McKinnon .....	Turns 11
21st	Ashleigh Izard .....	Turns 13
23rd	Oliver Rice .....	Turns 10
25th	Alyssa Muscat .....	Turns 10
28th	Tyler Drew .....	Turns 11
31st	Jay Allanson .....	Turns 13

## Happy Birthday Everyone!

### JOIN THE WOODEND STAR KIDS CLUB

Fill in your details below and place in the drop-boxes. Age limit is restricted to 13 years old and under.

Full name: \_\_\_\_\_

Address: \_\_\_\_\_

Date of Birth: \_\_\_\_\_ Age: \_\_\_\_\_

Phone: \_\_\_\_\_

Parent/Guardian Signature: \_\_\_\_\_

### **You can collect your birthday surprise by visiting Collier Office & Business Assist in the Woodend shopping centre – but you must come in yourself!**

(PS: We need your jokes and pictures! Please drop them in.)

They could be located in the path of the fire, and there will be no-one there to open up the facility or to provide accurate information. A Relief Centre is a much safer alternative.

Recovery Centre: usually established to provide information and assistance for those who have been affected by a bushfire. To find out where the Relief Centre is being established, and obtain further information about the bushfire situation by contacting:

- Victorian Bushfire Information Line on 1800 240 667 (free call). If you have a speech/communication impairment - contact the National Relay Service by dialing 1800 555 677 and request 1800 240 667.
- Stay tuned to your local ABC radio station (774AM radio in Melbourne or 91.1FM radio in Bendigo).
- Visit CFA's website at [www.cfa.vic.gov.au](http://www.cfa.vic.gov.au)

There is also a range of information available via Council's website: [www.macedon-ranges.vic.gov.au](http://www.macedon-ranges.vic.gov.au).

People who wish to offer their condolences to those affected by the devastating bushfires and show support for emergency service workers can go to one of Macedon Ranges Shire Council's service centres at Kyneton, Gisborne, Romsey or Woodend and write a message for inclusion in the official message book. These messages will subsequently be sent to the Victorian Premier's office for display in a prominent place.

## Aerobics in Woodend

Meals have been served, dishes are done, kids are settled, now it's your turn.

WEDNESDAY NIGHTS AEROBICS CLASS with AARON, MEN AND WOMEN INVITED

At the NEW TIME OF 7.30PM-8.30PM. We listen to our community and there needs.

**First class FREE**

Don't forget Tuesday morning Aerobics at 9.30-10.30am with Louise.

Drop the kids at School and make your way over.

Studio Heated and Air-conditioned, New Equipment

**First class FREE**

Buffalo Sports Stadium, Forest Street, Woodend, 5427 3411

**WOODEND  
NURSERY &  
GARDEN SUPPLIES  
OPEN 7 DAYS**

"LOCAL KNOWLEDGE FOR LOCAL CONDITIONS"  
**36 URQUHART ST, WOODEND**  
**Tel: 5427 1866 Mobile: 0428 271 866**

Full range of garden & landscape needs  
Rock, Soil, Sands, Sleepers  
Bobcat hire

## NATURAL SOIL SOLUTIONS

**Consultancy & Advisory Service**  
Healthy soils lead to healthy crops, healthy livestock and profitable farms.  
Call today for cost effective advice on natural methods to manage your most important asset – your soil.

Services available:

- \* soil testing
- \* Brix & EC readings
- \* fertiliser programs
- \* natural weed management
- \* equine and bovine hair analysis
- \* foliar feeding programs
- \* conversion to biological, organic or biodynamic systems

**New clients receive  
1st consultation FREE**

**NATURAL SOIL SOLUTIONS**  
**K. Marsh 0402 772 124**  
Woodend, Victoria  
woodend271@hotmail.com



**FLYING START FITNESS**  
*make it happen!*

• PERSONAL TRAINING • GROUP FITNESS

**Gordon Muir**  
Certificate III & IV in Fitness  
**0425 111 765**

## Tennis: New players welcome

A Junior grading day will be held at the club on Sunday, March 15 from 9am. New and existing players are encouraged to attend to help in placing players into appropriate sections for the upcoming Winter season starting after the Easter Holidays. Anybody with queries about the grading day or junior tennis can contact the club's junior co-ordinator, Murray Fraser, on 5427 4487.

The Open Winter competition involves teams of two men and two women playing three sets of doubles. Matches start at 1.30pm at courts across the Macedon Ranges. The club welcomes new, old and rusty players to contact Trudy Campbell-Jones on 5427 3524.

Team applications for the Winter season for Junior & Open close on March 18.

## WOODEND HEALTH & FITNESS

- Wide range of equipment
- Group fitness classes available
- Teen's Gym sessions available
- Personal training available

*Start your fitness campaign today*  
30 Wood Street, Woodend  
Phone Brian on 5427 1181 or 0488 016 709

## March – Final Month of Thursday Evening Petanque


Since daylight savings started from about 5.30pm each Thursday evening about 30 people or more have been enjoying their petanque at Hanging Rock.

Not only Petanque but BBQ and good fun have been had by all.

"Why not come and try over the next few weeks" invites Club President Ken Helmore.

Thursday 2nd April 2009 is our last evening at the Rock but members and friends will have a program of events over the coming months.

## STRIDING OUT PERSONAL TRAINING



**Julie Nicholson - Personal Trainer**  
14 Beves Lane Woodend. Vic. 3442  
Phone: (03) 5427 3062 or 0416 002 760  
Email: striding@bigpond.net.au

\*Personal Training for all fitness levels.  
**\*Fun, Motivating and Exciting way to get in and stay in shape.**

\*Personalised program for individual requirements.  
**Striding out for a better future!!**