

THE NEW WOODEND STAR



Circulation of 3050 throughout
Woodend postal district, Newham, Hesket, Ashbourne,
North Woodend, Hanging Rock, Carlsruhe, Cobaw.

AN INITIATIVE OF THE ROTARY CLUB OF WOODEND

June 08

A Monthly Community Periodical

First Publication 1997

Volume Twelve No. 5

Historic Opera comes to the Woodend Winter Arts Festival

Macedon Ranges residents are being given the unique opportunity to see an historic production of the 17th Century operatic masterpiece, *Dafne* at this year's Woodend Winter Arts Festival.

Three of Australia's leading singers, **Sara Macliver**, **Sally-Anne Russell** and **Paul McMahon** will be performing *Dafne* under the direction of renowned local keyboard artist, choral conductor and musicologist, **John O'Donnell**. Internationally celebrated author **Rodney Hall** is also an actor, playwright and musician but it is in his role as stage director that he comes to Woodend for this production of *Dafne*.

Opera was in its infancy when Florentine composer Marco da Gagliano entertained the Mantuan court with his masterpiece, *Dafne* in 1608. Based on Ovid's story of a maiden who turns herself into a laurel tree rather than fall prey to the advances of Apollo, *Dafne* is an outstanding example of the 'new' musical style that swept through Italy and eventually the whole of Europe during the 17th Century, a style we now call Baroque.

Celebrating the Quattro centennial of this tour de force, the spectacular production features a fire-breathing dragon, created by **Woodend artisan Steve Scott**. It will transport music lovers to another time with the combined talents of **Ensemble Gombert** and **Accademia Arcadia**.

Performing *Dafne* are three of Australia's leading singers, artists who bring to the production a wealth of international experience and talent that will take the audiences' breath away.

Sally-Anne Russell has performed with many opera companies including the Spoleto Festival in Italy and the Victoria State Opera. She has presented concerts and recitals in the Netherlands, Austria, England, Canada, Japan and New Zealand.

Sara Macliver is one of Australia's most popular and versatile artists. She has performed in the presence of Diana, Princess of Wales, at a recital concert in Japan and carried out a five-city tour of Italy with Ola Rudner and the Haydn Orchestra.

Paul McMahon has appeared as a soloist in the festivals of Sydney, Melbourne and Brisbane. He is highly regarded for
continued page 2



This weekend!

See page 9 for a full timetable and details of a ticket giveaway! Tickets from Box Office at St Ambrose School on the Festival weekend, at the event venues or by phone 0447 570 327

Paving a way to a park . . .

The eagerly awaited Paver Campaign for the Woodend Children's Park commences this month, much to everyone's delight. All those looking for a way to make a contribution to the new park are encouraged to buy a \$50 paver which will be engraved with the persons name, and will be permanently installed within the park's grounds. The pavers can be personalized by children with individual drawings and messages, or can be used as a unique record of anniversaries, birthdays, or a tribute to someone special, or even a business. **Order forms may be collected at May Five Gifts, High Street Woodend.**

Overall, it is a great way to contribute to the park, and kids big and small, will enjoy seeing their name forever inscribed in a park they have largely designed themselves. For any enquiries regarding the pavers, please email childrenspark@woodendweb.org or call 5427 3308.



A worthy recipient

Mr. Barry Naphthine of Woodend recently received a "Shine On" award from Rotary International (Southern Districts). The award recognizes the outstanding community service by a person with a disability who, by his or her actions, serves as a "Shining Example" to the community.

On May 4th 2008 Barry was the recipient of such an award at the Shine On awards held in Wangaratta. Rotary clubs within Districts D9780, D9790, D9800, D9810, and D9820 submitted 37 nominations for the awards, 25 nominees received a Certificate of Commendation with only 12 receiving the prestigious award.

Barry was nominated and sponsored by the Rotary Club of Woodend with support references from Mr. Ivor Johnson & Macedon Ranges Shire Council's Director of Community Well-Being, Anne McLennan.

At the age of 23, in 1964, Barry was diagnosed as "legally blind" at which stage he was also partly deaf in one ear. Barry learnt to
continued page 3



Newham Landcare presents:

Retro-Fitting Your House for Thermal Efficiency – find out how

Is your house cold in Winter and hot in Summer? Do you want to save money on heating/cooling bills?

Lyn and Maurice Beinat run Ecomaster, a Gisborne business dedicated to creating energy efficient buildings.

They will talk about energy ratings, available products and affordable solutions for home owners and renters.

Bring along your particular problems and queries about products or priorities. The session will be held at Newham Hall, Newham, on Saturday 21st June at 9.30 am. RSVP to Penny 5427 0795 by Friday 20th June for catering & seating purposes.

Woodend Rainfall Report 2008

Each month we add the rainfall details and the year to date total. Our rainfall report shows 2004, 2005, 2006 and 2007 comparisons. Please note that your own rainfall readings may not exactly match these. These readings are the official BOM readings and have been taken in the same location in Woodend for many decades. All measurements are in millimetres.

	2004	2005	2006	2007	2008	
January	21.2	47.4	49.8	83.5	17.1	Jan
February	6.2	72.2	53.1	27.4	22.1	Feb
March	19.0	5.8	20.6	35.7	25.4	Mar
April	41.2	18.8	46.4	20.2	20.4	April
YTD:	87.6	144.2	169.9	166.8	85.0	YTD

Reminder: We are now on Stage 3A water restrictions.

For the year to date 30/04/08 there was rainfall of

85.0 mm

1 inch = 25.4 mm therefore the total year to date is 3.35 inches

The New Woodend Star

An initiative of the Rotary Club of Woodend Inc.
The Bank, 75 High Street, Woodend, Vic. 3442
ABN 32 685 225 161 No. A0021518E

Layout & printing by Woodend Copy Centre

For people wishing to submit stories, articles, letters to the publication, simply place the information in the strategically placed drop-boxes. These are located at the Liquor Shop, Collier Office & Business Assist, The Bank @ 75 High Street and Woodend Newsagency.

Circulation: 3050 copies throughout Woodend and district

Disclaimer: The opinions and views expressed by the contributors are theirs alone, and do not necessarily reflect the views and opinions of the Committee of Management, or the Rotary Club of Woodend.

The Committee reserves the right to edit articles for length and clarity.

Committee: Barry Naphine, Ivor Johnson, Claudia Green, Irene Hatcher, Joy Barker and Jane Watters.

Closing date for inclusion of articles for each issue is the 15th of the month prior to publication.

Advertising available

For all bookings and artwork submission please contact Irene Hatcher 5427 3092.

Artwork to email nws@collieroffice.com.au

This newsletter is supported by



ADVERTISERS PLEASE NOTE:

Unless specific dates are given for inclusion – all advertisements will be placed and charged for until notified otherwise IN WRITING.

continued from page 1

his interpretation of Baroque repertoire and has performed widely from the operatic and concert repertoire of the 17th and 18th centuries.

Rodney Hall's latest book, *Love Without Hope*, has been short listed for the Miles Franklin. In 2005 Rodney read from the then unpublished manuscript at the Woodend Winter Arts Festival. It was a moving reading for all those present.

Regular patrons of the Woodend Winter Arts Festival will be well acquainted with the talents of Arcadia Accademia and Ensemble Gombert. Led by Woodend's own John O'Donnell and Jacqueline Ogeil, these two musicians bring their internationally celebrated talents to this exceptional performance.

Dafne is sponsored by the Italian Institute of Culture and Festivals Australia. It will be performed at St Ambrose Hall on Friday, June 6 at 8.00 pm, Saturday, June 7 at 5.30 pm and Sunday, June 8 at 8.00 pm. Tickets are \$50 and \$45 concession. Tickets can be booked through Ticketmaster on 136 100 or purchased at the door or box office on the festival weekend. The full program can be found at www.woodendwinterartsfestival.org

SUBSCRIBE TO THE NEW WOODEND STAR

Do you live outside the *New Woodend Star* distribution area? be sure to receive your copy every month by subscribing. A yearly subscription of 11 issues is just \$27.50. Post to *New Woodend Star, C/- The Bank, 75 High Street, Woodend 3442.*

Name: _____

Address: _____

Phone: _____

Enclosed: Cheque/Money Order for \$27.50

Advertising Rates for 2008

New advertising rates per month from 1/1/08

All rates include GST & are priced per month.

Business card size (per month)	\$38 inc GST
Eating Out (per month)	\$31 inc GST
Trade Page (per month)	\$25 inc GST
Quarter page (per month).....	\$85 inc GST
Half page (per month)	\$150 inc GST
Full page (per month).....	\$267 inc GST
Insert (of your printed brochure)	\$180 inc GST

Advertisers: Please note – it is in your interest to book and pay for a year in advance, as a 10% discount applies to any full year pre-paid booking.

This now includes to Trade Page & Eating Out sections.

Any existing pre-paid ads will revert to the new rate on completion of the pre-paid period.

Information for advertisers

Any accounts queries can be made to Joy on 5427 4089 during office hours.

Mail should be directed to: New Woodend Star, C/- The Bank, 75 High Street, Woodend 3442.

Drop boxes for articles are at: The Bank (75 High Street), Woodend Newsagent, Collier Office & Business Assist and Marks' Liquor Shop.

Copies of the publication will also be available.

Woodend Star Publication Dates for 2008

July	Delivery 30th June
August	Delivery 4th August
September	Delivery 1st September
October	Delivery 29th September
November	Delivery 27th October
Dec / Jan	Delivery 1st December

Advertisers and contributors are reminded to book in by the 15th of the month with artwork to follow immediately. Changes to advertisements, new advertisements or cancellations should all be made by email or in writing.

touch type and undertook further rehabilitation programs to enable him to overcome his disabilities. In 1965 Barry was employed by the RACV where he established an electronic traffic law library, using a computer screen reading program. He worked for the RACV for 27 years and during this time he was a member of the Consumer's Association of Victoria, serving several terms as President, was appointed by the State Government as a member of the Consumer Advisory Panel of the Market Court, joined the Consumer Federation of Australia remaining a member for 28 years and serving on a number of Standards Australia technical committees dealing with standards and safety in the automotive industry. During his membership of the Consumer Federation of Australia, he was successful in having 4 standards made compulsory under the Trade Practices Act. In 1977, Barry became totally deaf in his good ear.

Other community activities included membership of the Management Committee of the Kirinari Kayak Club, and appointment by the Minister to represent the interest of canoeists in producing a management plan for the recreational use of the Yarra River from Warrandyte to the Upper Yarra Dam, positions on the Management

Committees of the Woodend Probus Club and the Woodend and District Heritage Society and a Board member of the Rotary Club of Woodend.

Barry now has no central vision and has decreasing peripheral vision but still continues with community involvement today. He is a current, and charter, member of the local Disability Advisory Group, which is a Macedon Ranges Shire Council advisory committee whose role is to advise Councillors on issues affecting people with disabilities. Barry is a member of the Management Committee that publishes the *New Woodend Star* and has been so since inception, holding the position of Secretary for some years.

In his "spare time" Barry's hobbies and interests include woodturning with a lathe at home and restoring an old grey "Fergie" tractor. Barry was a motor mechanic before going blind and has carried out significant work on the Fergie including repairing the damaged bonnet (essentially panel beating) and freeing up the seized engine so that the engine now starts and runs.

Barry is a worthy recipient of this Rotary award.

Submitted by Grant Hocking

CHINKA STEEL CONVEYANCING
FOR ALL YOUR
PROPERTY SALES AND PURCHASES

RING CHINKA ON
03 5427 2477

74 HIGH STREET WOODEND 3442

Hospital Auxiliary News

The Woodend Auxiliary of Kyneton Hospital will hold its next meeting on June 12th, in the supper room of St Ambrose Hall, Templeton St. The meeting will start at 1.30 p.m. Due to the temporary closure of the RSL Hall, we are not holding any functions for the time being, but look out for us at the usual spots with a Father's Day Raffle in August!

Submitted by Jo Clancy

WOODEND
Proud to be Pokie-free



New Members
The Rotary Club of Woodend

Put something back into this great community and be part of a worldwide organisation that helps build goodwill and peace allowing ordinary people to achieve extraordinary things and bring about exceptional change in the world.

Contact Kai 5427 1029



Macedon Ranges
Real Estate Specialists
Open SEVEN Days
108 High Street, Woodend
Phone (03) 5427 2277
www.connallys.com.au

Children's concert popular in Woodend Winter Arts Festival

This year's inaugural Children's concert Peter and the Wolf has proved extremely popular. Organisers are thrilled with the response to this event and it is attracting family groups from all around the region. The concert is on Saturday 7th June at 2.30 pm.

The concert will give young people a real exposure to other young people who play musical instruments. And it's a concert the whole family can enjoy!

To see if there are any tickets available please ring 0447 570 327 – tickets must be pre-booked as they include bus transfers to Braemar from Woodend.

James Morrison – not to be missed!

If you haven't yet booked tickets for James Morrison's Jazz Indulgence concert – do so today!

James and his sextet will perform at Braemar's Heyward Hall on Saturday 7th June at 8.30 pm. Tickets are available through Ticketmaster on 136100 or purchase on Saturday from the Box Office at St Ambrose Primary School.

Hanging Rock Winery will have wine for sale. Buses are provided for transport – just be at the Woodend Visitor Info Centre or the Clocktower from 7.30 pm for pickup.

For information phone 0447 570 327.

WOODEND SELF STORAGE



- Store your business documents, stocks or furniture
- 7 day access
- 33 individual sheds
- Affordable prices
- Insurance available

For any enquiries
please contact
Leonie or Dennis Barker
on 5427 4175

Art in Clay presented by Macedon Ranges' Potters

As part of this year's Woodend Winter Arts Festival, the Macedon Ranges' Potters are pleased to present a FREE exhibition of their work. They have been exhibiting together for over 20 years, and produce a diverse range of high quality and functional work.

The exhibition will be open from Sat 7th June to Monday 9th June from 10am to 4.30 pm daily at the Cobaw Community Centre in Forest Street. All are welcome and entry is free.



GARAGE DOORS

ELECTRIC GATES • SOLAR GATES
SELF OPENING GLASS DOORS

Ken Ross

0427 661 543 5422 7507

Central Highlands Doors & Gates

Serving Kyneton & Woodend

Drumming up a storm

If drums and percussion are your thing, come and see Nick Parnell this weekend. Nick is Australia's most exciting young



concert percussionist. He breaks traditional boundaries exploring world music and performing works by Bach and Chopin on percussion. Winner of the 2001 International Melbourne Percussion Competition, his energy and precision on instruments including marimba, vibraphone, drums, gongs and cymbals have fascinated and

enchanted audiences throughout Australia, Asia and the UK.

Percussion Spectacular with Nick Parnell and Graeme Burgen on piano will be performed at St Ambrose Church, Woodend on Saturday 7th June at 1.30 and again Sunday 8th June at 4.00 pm. Tickets are \$35/\$30 and can be purchased from the Box Office prior to the concert commencement.



bodywise
UNDERWEAR
comfort for women



Underwear sizes 10A/B to size 22E/F

- bras • briefs • camisoles • swimwear • sleepwear
- including maternity bras & briefs

Phone 1300 66 17 66

Next to Woodend Post Office

Opening Hours 9.00 am to 4.30 pm

no-obligation, free fittings by appointment
Est skincare • Queen B candles • M.I.L.K. books & gifts

www.bodywise.com.au

NEW SPORTS BRAS for EXTREME and HIGH-IMPACT activities

ADVANCED
**EQUINE
DENTISTRY**
YOUR VETERINARY PROFESSIONAL

Dr Shannon Lee BVSc

0418 598 621

*we
come to
YOU!*

Mobile services for Macedon Ranges of Victoria

www.advancedequinedentistry.com.au

SELL YOUR CAR TODAY

Prestige ~ Family ~ Sports ~ 4X4

car connect direct ▶

0418 183 360

Cash ~ Bank Chq ~ Finance Paid Out

Email: ccdirect@bigpond.net.au

LMCT - 10132W

BANK LOCALLY

AND SAVE YOURSELF
TIME & MONEY

Westpac Woodend have specialist
Bankers available by appointment
for the following services

- Transaction Accounts ■ Business Accounts
- Savings Accounts ■ Merchant Facilities
- Home Loans / Investment Loans
- Credit Cards
- Financial Planning / Superannuation
- Personal Loans ■ Insurance Needs

*Feel free to call us
for an obligation free appointment on
5427 3426*

or visit our branch at 75 High Street Woodend

Westpac

75 High Street, Woodend
5427 3426

Opening Hours

Monday – Thursday
9.30am – 4.30pm
Friday 9.30am – 5.00pm

Breast awareness info session

Women of the Macedon Ranges and beyond are invited to attend a Breast Awareness afternoon presented by Judy Strates of Essentially Woman on Saturday the 5th July 2008, from 1–3pm in Woodend. The focus of this session is to provide current information regarding the importance of ongoing post-surgical breast care.

Judy, a Qualified Breast Care/Lingerie Fitter with long term experience and industry based knowledge, understands fully the need for sensitivity, confidentiality and privacy when working with women, and discussing the many issues encountered pre and post breast surgery.

If you or someone you know is scheduled for, or has had breast surgery either recently or in the distant past and would like up-to-date information regarding government assistance and funding for prosthetics, access to the latest breast forms, comfortable and attractive lingerie manufactured for prosthetics and the opportunity to connect with other women and associated health professionals, please call 1300 66 17 66 to register your interest or for further information.

Kyneton Physiotherapy

ROBERT ROUSE

B. App. Sc. (Physio) Member A. Physio. Assoc.

Move Well. Stay Well!

Registered for Comcare, TAC, W/Cover, Vet. Affairs
NO REFERRAL NECESSARY

74 High St., (Corner New St.,) Kyneton

20 years on High Street! 5422 2290

FOR LEASE

Upstairs Office Space for Rent
Approximately 60 square metres

Historic Piper Street
in Kyneton

\$165 per week

Phone: 5427 3892 for information

Woodend & Five Mile Creek Landcare

Our usual working bees continue, join us this month on Sunday June 22nd, near the Woodend Visitor Information Centre, where the creek banks are looking pretty scruffy, because nothing has been done west of High Street for about 3 years! As usual, there's a good morning tea, and a sausage sizzle for the workers. The Slatey Creek sub-group now has some funding for work around Slatey Creek Blackgum Reserves, so they're having a working bee also, on Sunday June 15th. Phone David Gossip on 5427 4117. Another of our sub-groups in Quarry Rd has just been given an Australia Post Grant to develop community help and action along Bawden Rd and the Railway Reserve. So wherever you live in Woodend, there's a good chance of helping out at a working bee! Hey, it's FUN – and it makes you feel all warm and fuzzy inside (and only a little weary on the outside.)

Phone Jo on 5427 1909

Save your wardrobe.
Save the world.

*Saving
grace*
recycled fashion

New arrivals daily!

Quilted vests, light jackets, long leather boots, designer jeans, leather loafers.

42 Anslow St Woodend

T 0414 524 423

Hours Thurs/Fri 10-5 Sat 10-2

In front of Cafe Colenso next to the Florist.

Kirsty Nuttall

**MACEDON RANGES
PICTURE FRAMING SERVICE**

By appointment only
Phone/Fax: 5427 3511
Mobile: 0417 337 857

News from the Woodend R.S.L. Womens Auxiliary

Although hard times have hit the Woodend R.S.L. with the temporary closure of our hall due to a fault in the roof, our Auxiliary have been very fortunate to have the support of the Bowling Club, The Scout Hall Committee, The Neighbour Centre, The Football Club, and The Woodend Golf Club who have all offered their premises to keep us functioning.

Our thanks also go to the schools, traders and Hanging Rock for selling ANZAC badges for us this year and we want it known that a record amount was collected. Thank you all.

ANZAC Day was a real challenge this year and the loss of our hall was keenly felt. Somehow with the help of our supporters we managed to overcome this difficulty. Thank you team for a job well done. Are we downhearted? Definitely not! We are OK.

On a lighter note our Tina has organised a bus trip to Woop Woop and Castlemaine. The cost is \$48 which includes lunch at a hotel in Castlemaine. The date is 16th June and the bus leaves the R.S.L. Hall at 9.30am. Reg has

Pamela Kell

Remedial Massage Therapist, Level 1 Pilates Instructor

SSNT/AAMT, Workcover accredited
Relaxation, Sports, Remedial Massage
Manual and Lymphatic Drainage

By Appointment

22 Goode Street, Gisborne

5428 1000 0408 093 098

Trentham/Woodend Vision Australia

A humble Spud Luncheon will be held at Norma Proctor's home on Friday 20th June at 12 noon, to raise funds for Vision Australia.

There will be entertainment, a stall of goods for sale along with a raffle.

Please ring Norma on 5427 1260 or Grace on 5427 2003 should you be attending for catering purposes.

Venue: 718 Tylden Road, Woodend. All are welcome.

Norma Proctor, President.

TERRY'S GROUND CREW MOWING & MAINTENANCE

0400 909 303

ENJOY YOUR PRECIOUS WEEKENDS

TERRY BARRETT

PO BOX 885 WOODEND VICTORIA 3442

offered to drive us and Tina is navigator. Don't miss this one. It's a hoot.

The planned trip to the Cuckoo Restaurant is 4th July, cost \$55. Bookings are being taken now for both trips. Phone 5427 1225.

A curry and pasta night is to be held at The Woodend Golf Club on Saturday 26th July. Cost is \$15 – all you can eat plus sweets. Further nights at The Golf Club are planned.

Our good wishes go to Pam and Margaret W. who are still on the sick list. Get well soon girls, we miss you.

The next Auxiliary meeting will again be held at The Woodend Neighbour Centre, 1.00pm 11th June. New members will be made most welcome so come along ladies, your support would be appreciated. New ideas for future fundraising also welcome.

Betty J Barned, Vice President, R.S.L. Womens Auxiliary

Nature's Garden
Quality 100% Organic Produce

DISCOVER THE HEALTHY BENEFITS OF AN ORGANIC LIFESTYLE

At Nature's Garden, our aim is to provide you with the highest quality 100% certified organic fresh fruits, vegetables, produce and groceries, combined with friendly service and advice, and competitive prices.

We also offer FREE HOME DELIVERY with every seasonal fruit/vegie box ordered to be delivered in Woodend or valued over \$50. For all orders under \$50 delivered outside Woodend, there is a \$5 delivery fee.

RED BEARD BREAD DELIVERED FRESH EVERY DAY FROM TUESDAY TO SATURDAY

Call in and see our extensive 100% organic range at Shop 4A Collier St, Woodend (cnr Anslow St) or call 5427 4406.

Naturally, better products



NGW2474



24 Seven Alarms Aust Pty Ltd

- Alarms installed, Serviced and Monitored
- SPECIAL - 2 Sensor Alarm packages from \$900 + G.S.T
- Digital Video Surveillance
- Medical Alert Systems
- Access Control Systems PSBL: 732-083-90s

1800 247 111/ 03 5427 4411
sales@24sevenalarms.com.au
Now Based in Woodend

News from Newham

Wonderful news for Newham Primary School with a large Grant from the State Government to improve their facilities. Congratulations to everyone who worked so hard to get it. Everyone looks forward to the work commencing as they are looking forward to the work on the Hall commencing. Next cab off the rank [we hope] will be a new larger CFA shed. The CFA have had to purchase a shipping container to house equipment in for health and safety reasons. This is only a temporary measure until the new shed is built we don't know when!!

Coral Crozier organised a wonderful Trivia Night along with Brendan Crozier and his friends who were enormously entertaining. The Hall was packed to the rafters and along with BYO a terrific supper was provided. Fran and Neil's table won the overall night and we raised \$2,017, a stunning effort! Thanks must go to Coral and Brendan for all their hard work and we also thank all the business people in Woodend for their donations of prizes, as well as all the folk who came and made it such a successful night both socially and financially.

The Trivia night was our first event on our new floor which is looking fabulous. Ian Miller kept it all on track and worked like a beaver to get it finished – thanks Mr. President! We also have 4 panel heaters in the Hall now, first heating in 105 years so no longer will we freeze to death in winter, and with our works we will be able to access the toilets from inside – what paradise!

Our fundraising thermometer is going up at a great rate – we have reached the great heights of \$22,700 in 5 months which is absolutely fantastic for such a very small community. So many people have contributed to this with a lot of work, enthusiasm and energy and creative ideas.

If you haven't responded to our request for a donation from you we would be very happy to hear from you, please contact Val Sutton on 5427 0387 or perhaps you could become a member of the Hall.

We are very pleased to announce our Architect who is Alan Morton from Morton Dunn in Ballarat. Alan has extensive heritage experience and we are really looking forward to his ideas and working with him.

The Garden Group together with Landcare will be planting up Wesley Park starting soon, this will be done with natives and in time we hope we will be able to integrate the Hall and Park to make a practical and beautiful community precinct.

Submitted by Sally Staback

Festival Broadcasts on ABC Classic FM

Extend your Woodend Winter Arts Festival experience by enjoying the broadcasts of the 2007 Festival concerts this June. A full listing of the concert broadcasts is available on www.woodendwinterartsfestival.org.au.

Broadcasts commence this week on Wednesday 4th June at 1.05 pm and run for four Wednesdays at that same time. Each year the ABC record the concerts from the Festival for future broadcast, giving you the opportunity to hear a concert that you might have missed!

Here are the full details of the concert broadcasts:

4th June, 1.05 pm: Schubert, *Piano Quintet in A* (The Trout) performed by John O'Donnell, Rochelle Bryson, Christian Read, Josephine Vains & Stuart Riley

4th June, 2.00 pm: Beethoven, *Piano Sonata No 27 in E minor* and Schumann, *Woman's Life and Love* performed by John O'Donnell, piano, and Helen Gagliano, soprano

11th June, 1.05 pm: Corelli, *Trio Sonatas*, Scarlatti *Sonatas* and Vivaldi *Trio Sonata*, performed by Accademia Arcadia directed by Jacqueline Ogeil

18th June, 1.05 pm: Mozart, Schubert, Chopin and Munro, performed by Ian Munro on piano

25th June, 1.05 pm: Carl Orff, *Carmina Burana*, arranged and performed by Gareth Koch on guitar


25th June, 2.00 pm: Brahms *Eight Songs* and German *Folksongs*, performed by Helen Gagliano, soprano, and John O'Donnell, piano.

C
O
M
M
U
N
I
T
Y
H
O
U
S
E

Café Nights includes a variety of nice meals & Coffee

Starts at 6pm Woodend Community Hall

Sunday June 29




Guest Artist

Howard Langmead is a Christian commentator for the media.

A Christian who shows respect and understanding for those with different opinions and celebrates living in a multi-faith culture.

He brings Christian insights into what is happening in society, and adds a unique comedic perspective.

He provides social and religious commentary with:

- warmth,
- intelligence and
- humour.




Living Word meet every Sunday Evening at 6 for a Contemporary Christian Church service

Suzannah Espie

in performance at
Macedon Views Function Centre
652 Black Forest Road, Woodend/Macedon
Saturday 21st June from 6.45 pm



Ticket price \$70 pp
Includes a sumptuous 2-course formal sit down dinner & show. Dinner served from 7:15pm, drinks available from the bar

Her voice is a real surprise. She sounds like a white soul singer. (Inpress magazine)
Ranging from gentle ballads to flat-out soul belters, she has got a voice and is not afraid to use it. (Cheap thrills magazine)

For bookings please call Kai 5427 1029 or
Eb 5427 1629. Book your seats ASAP, tables
of 8-10 available

Rotary present Suzannah Espie in concert

Suzannah is an outstanding singer and songwriter. Her performances are mesmerising; you are lulled by a softness in her voice and then punched in the nose with its sassy strength. Suzannah's songs have acquired both the grittiness of the inner city and the openness of country Australia.

For bookings please call Kai 5427 1029 or Eb 5427 1629. Book your seats ASAP, tables of 8-10 available.

Chiropractor – Mark Brown

- Mark has been practising for the last 6 years in at the Westpac Bank Building, 75 High Street.
- Mark's approach involves massage and stretching of muscles and ligaments before manipulation to provide best results.
- When appropriate, Mark can advise you on exercises to both stretch and strengthen muscles that support the spine.
- Mark has successfully treated problems including shoulder, elbow, wrist, knee and foot.
- Chiropractic can assist in a large range of problems including headaches/migraines, asthma, chronic digestive problems and certain types of neuralgia.

Phone 5427 1456 or 0407 526 403

Woodend Senior Citizens

The next general meeting of the Woodend Senior Citizens will be held at the Woodend Community Centre on Friday 6th June at 10.30am followed by a fun afternoon. Carpet bowls are played each Friday morning at 10am, cards in the afternoon at 1.30pm, Bingo on Tuesday afternoon at 1.30pm. All Seniors are invited to attend any of these events and will be made very welcome.

Submitted by Norma Richardson

Woodend Neighbourhood Centre

There are still several opportunities for you to enjoy training or social occasions here at the Woodend Neighbourhood Centre.

First Aid training is run on 14 & 21 June so if you want to refresh your CPR skills, do a level I or level II First Aid Certificate now is the time.

Our walking groups are growing in popularity so call in for our full list of groups and find one that suits you. Other regular groups include scrap booking, Tai Chi for seniors, cycling, photography club and jewellery making.

Our sewing, patchwork and embroidery classes are working very hard and make quilts to donate to hospitals, they will also make a patchwork quilt to order, so if you want a quilt but don't have the time to make one, we can arrange it at low cost.

We are currently planning term 3 programs and welcome suggestions from the public.

If you are new to the area please drop in to see what we offer, or what you could offer us – we are always looking for tutors and mentors to help local people.

Call into 47 Forest St, ring 5427 1845 or look for details on our website www.wnci.websyte.com.au

WANTED! BLUESTONE, TIMBER WINDOWS, BEAMS, FLOORBOARDS AND WALL LINING, GALVANISED ROOFING, PEDESTAL VANITIES, TAPS, ETC.

Local couple restoring and constructing heritage home in Woodend seeks vintage building materials. Here is your chance to clean up that garage, shed, remove dilapidated farm buildings, or even clear your block of bluestone. Definitely not for resale at profit. Fully insured for risk and we will pay cash on pickup. Interested? call

Peter on 0412 029 409 for a chat or

email peter@createnow.com.au with details of your stuff!

Note: "we only need so much, so first in, best dressed."

Found

Are you missing a watch? A local student has left a watch at Collier Office & Business Assist in recent weeks. Please call in and describe the watch to collect. 5427 3092.

Turn an old mobile phone into a tree!

Collier Office and Business Assist are celebrating World Environment Day On June 5th.

In conjunction with **Landcare** and **Mobile Muster**, your old mobile can be recycled and a new tree planted. But there are just a few days left for this project! **Bring your old mobile phone into Collier Office & Business Assist before Thursday June 5th** and they will be recycled into a whole range of new products, even jewellery!

Throughout the year, Colliers collect your used ink and toner cartridges which are collected by **Planet Ark**. No matter what sort of cartridge, the plastics and other components are all broken down and recycled into other products, thereby avoiding disposal in landfill.

Bradley's

Curtains + Blinds

New showroom now open
Mon to Fri 9 - 5.30 + Sat 10 - 1



t 5427 2361 fx 5427 1019 72 High Street, Woodend VIC 3442

www.bradleyscurtains.com

Win a work of art!

Margaret Castle has generously donated a painting (on display in Woodend Pharmacy until later this week). Purchase a raffle ticket for \$2 and you could be the lucky winner! Drawn on Monday 9th June during the Botanical Bounties exhibition. The Woodend Winter Arts Festival would like to thank Marg for her generous contribution to the festival. Tickets will be available at the Box Office and Botanical Bounties exhibition during the Festival weekend. In the week leading up to the Festival tickets can be purchased from Woodend Pharmacy and Woodend Copy Centre/Collier Office.

Win tickets to Woodend Winter Arts Festival

The Woodend Winter Arts Festival are offering 2 lucky readers two tickets each to a concert or event of their choice (unless sold out).

All you need to do is answer the following 3 questions on the back of an envelope, and either post to **PO Box 781, Woodend Vic 3442**, or drop into a box at **Woodend Copy Centre/Collier Office** BEFORE this **Thursday 5th June at 5pm**. Two lucky winners will be drawn out and phoned – and given their choice of event tickets.

Here are the three questions:

- Where will the box office be for this year's Festival?
- Who is the percussionist that will be performing this year?
- What is the name of the Baroque Opera being performed at this year's Festival?

The answers are all in this issue of the *New Woodend Star*. Good luck!

Woodend Winter Arts Festival Timetable

Cut out & take with you this weekend!

Friday 6th June

8.00 pm Baroque Opera St Ambrose Hall

Saturday 7th June

10.00 am Hazel Edwards/Family History workshop The Bentinck
10.00 am Botanical Bounties Old Schoolhouse Gallery
10.00 am Macedon Ranges' Potters Cobaw Community Centre
10.30 am Elizabeth Honey/Children's event Library
11.00 am Michael Kieran Harvey, piano St Ambrose Church
12 noon MacIver & Russell, Pergolesi Stabat Mater St Ambrose Hall
1.30 pm Nick Parnell & Graeme Burgen St Ambrose Church
2.30 pm Peter & the Wolf, Scotch College and Rod Quantock Braemar (buses in High Street from 1.30)
3.00 pm Riley Lee St Ambrose Hall
3.30 pm David Thomas & MK Harvey St Ambrose Hall
5.30 pm Baroque Opera Dafne St Ambrose Hall
8.30 pm James Morrison Sextet Braemar (buses in High Street from 7.30)

Sunday 8th June

9.30 am Flynn Silver lecture (pre-booking) The Bentinck
10.00 am Botanical Bounties Old Schoolhouse Gallery
10.00 am Macedon Ranges' Potters Cobaw Community Centre
10.30 am Sophie Cunningham The Bentinck
12 noon MacIver & Russell, Pergolesi Stabat Mater St Ambrose Hall
12.30 pm Michael Kieran Harvey St Ambrose Church
2.00 pm Literary Panel The Bentinck
4.00 pm Nick Parnell & Graeme Burgen St Ambrose Church
4.00 pm Riley Lee St Ambrose Hall
8.00 pm David Thomas & MK Harvey St Ambrose Church
8.00 pm Baroque Opera Dafne St Ambrose Hall

Monday 9th June

10.00 am Botanical Bounties Old Schoolhouse Gallery
10.00 am Macedon Ranges' Potters Cobaw Community Centre
9.30 am Robyn Rowland Cafe Colenso
11.00 am Dr Roger Sworder, pub philosopher Holgates
12.30 pm Australian String Quarter St Ambrose Church

Ticket info: 0447 570 327

Box Office: Call into **St Ambrose Primary School** from **late Friday afternoon 6th June** until **midday Monday 9th June**. Tickets can be purchased for all events from this location. If you are purchasing before a concert please allow enough time.

Prices: **James Morrison** \$80/\$70 concession.
Opera \$50/\$45 concession.
Peter & the Wolf (\$10 each - very limited tickets).
Other concerts \$35/\$30 concession
Family History session \$80/\$75 concession (please pre-book)
Other literary events \$15/\$13 concession
Art exhibitions FREE
Children's literary event FREE
Flynn Silver FREE (most likely booked out)
Festival Program \$5 from the box office or at the door.

Note: Please arrive at least **15 minutes** prior to the concert or event
No mobile phones or cameras during events
No food or drink during concerts
Concerts are being recorded by the ABC
Latecomers may only be admitted during a break in performance.



Macedon Ranges Equine Vets

- **Full equine services including x-rays, ultrasound and endoscopy**
- **Foaling down**
- **Stable and crush facilities**
- **Foal alarm rentals**
- **Foster mares available**

0400 449 990 03 5428 1888



- * Dining suites
- * Sofas
- * Buffets
- * Beds
- * Coffee tables
- * Cushions
- * Glassware

Let Habitat help make your house a home



102 High St
Woodend
Ph 5427 2100

65 Mair St East
Ballarat
Ph 5333 5525

**Furniture & Homewares
Open 7 Days**

Buteyko for breathing

The Cancer and Natural Therapy Foundation will be holding a Health Seminar addressing the benefits of Buteyko Breathing Technique for conditions such as Asthma, Bronchitis, Emphysema, Chronic Obstruction of Airway Disease and Sleep Apnoea. John Tait who will be giving the talk, will share his successful personal experience with this technique following his diagnosis with emphysema 9 years ago. John was so impressed with the results of Buteyko, that he undertook training in the use of the Buteyko Breathing Technique so that he could help others. John has successfully managed his emphysema all these years without any medication.

Buteyko Breathing Technique has a wide range of application that can be used to manage anxiety, panic attacks and facilitate healing generally. John trained in Brisbane and has attended conferences both in Holland and Brisbane to keep abreast of the latest studies and research in Buteyko. He is a member of the Buteyko Breathing Association in London. John is also a Hypnotherapist and Remedial Masseuse.

The seminar will be held on Saturday 21st June at the Sunbury Leisure Centre, 531 Elizabeth Dve from 1.30 to 3.30. For enquiries and bookings, contact the Centre on 9740 3977 (Mon/Wed.Fri) or Sandra on 0411 100 947. Cost: \$10 (includes afternoon tea).

**WOODEND
Proud to be Pokie-free**

Woodend Children's Park gains some friends

The Woodend Children's Park was fortunate to gain the attention of some local companies this month, wanting to put something back into their community. Bourkies Bakehouse in High Street Woodend, and Fulton Hogan's Tylden Quarry both donated \$10,000 each to the Children's Park project, which is a substantial start to the Park's donation drive. Tylden Quarry is an important basalt quarry resource in the region that has operated for over 80 years. The quarry supplies building and road construction materials to vast areas of the surrounding district. Jules Fulton from Fulton Hogan Tylden Quarries said that he saw a project such as the Woodend Children's Park bringing a whole town together, all generations, keeping the community spirit strong which is essential for country towns. Bourkies Bakehouse, home to the infamous champion vanilla slice see the Children's Park project as an ideal way to thank and acknowledge the townsfolk of Woodend and surrounding districts and to leave a legacy for the community to enjoy.

These generous donations will go toward the equipment in the park.

A collaboration of the Woodend Children's Park committee, local and State Government have been working together throughout the projects journey and representatives from each were welcomed at the Tylden Quarry for the Fulton Hogan's cheque handover; Donna Petrovich MP, Cr John Connor, MRSC CEO Peter Johnson, and Sustainability Director Dale Thornton, along with WCP Committee members Kellie Duff, Jane Walduck and Libby Abourizk-Lindsay (see photo below).

Since the successful Working Bee held last month at Nicholson Street, the public has had an opportunity to see first hand the incredible potential of the site, and the WCP committee are very grateful for the many offers of in-kind goods and services being offered.

There are many ways (big or small) that people can contribute to the park project, every contribution is greatly appreciated and it is a great way to leave your mark in your town. For further information please call Kelly Clune on 0412 420 146.





Glen Erindulgence

Wellness Centre

Gift vouchers and indulgence packages available

- Group Bookings with Lunch a Speciality
- Exclusive "Guinot" Hydradermie Facials
- Facials
- Pedicures
- Manicures
- Air Brush Tans
- Waxing
- Relaxation & Remedial Massages

Simply indulge and relax your body and mind

160 Glenfern Road, Romsey 3434 Telephone: (03) 5429 5187



10%

discount

on all wellness services on presentation of this coupon.

Glen Erindulgence
Wellness Centre

Woodend Prospecting update

Recent weather has not been good for going to panning sites. There is no water in the creeks and we have had to wait until rain comes to go out again. The weekend that we undertook our reconnaissance was a warm day and we visited the Loddon River, up stream near Lyonville, but we didn't find the site we were looking for. However further work studying maps indicates the prospect is in the area and we still have some work to do to identify the site.

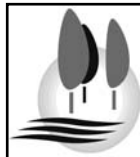
It gets a bit difficult to identify sites when the maps don't have good coordinates, but we will persist and maybe some good samples will be found. The conglomerate site on Macedon was also too difficult to find, but we'll keep trying on that site and we need another visit to Riddells Creek when it has some water in it.

It's been great to meet so many prospectors in Woodend. Unfortunately it may be some time between outings due to other commitments. "When is the next trip out?" – well, the next trip will be to find some fossils. All you need is a hammer or pick. Mums and dads are welcome to bring their children as a half day out is good fun. The weather will dictate when we go, and I'll do the ring around to confirm date and destination. If

you are interested in further information please call me directly.

Keep looking at all that glitters – seems to be a lot of gold around just not enough water.

Submitted by Rockhound Dave, 0414 893 446



RIVERWOOD GROUP

Accountants, Advisors & Planners

Office Locations:

111 High Street, Woodend

Ph: 03 5427 8000

2/19 Bourke Street, Kilmore

Ph: 03 5782 1273

email: admin@riverwoodgroup.com.au

website: www.riverwoodgroup.com.au

Riverwood Group can offer a *Total Financial Solutions* package for you and your family. Take a look at some of the services we provide:

Taxation

All your taxation requirements to suit individuals and small businesses.

Investments to Create & Protect your Wealth

Managed Funds, Indexed Funds, margin Lending and more

Planning for Retirement

Allocated Pensions, Centrelink Benefits and Payments

Stockbroking

Recommended lists, broking facility available, share updates

Superannuation & Rollovers

Advice, placements, Self-Managed Super Funds and Eligible Termination Payment Advice

Other Services

Home & Investment Loans, Business Loans and Leasing, Income Protection, Life Insurance, Professional Indemnity, Estate Planning and more.

Family History workshop

Hazel Edwards noticed that her 'Writing Non-Fiction' workshops were swamped with family historians, so she began to run specialized sessions. We are lucky to have one here in Woodend during this year's WWAFF. There are many reasons people embark on family history and most have never tackled a book length project before, let alone one other people will find interesting to read. There is personal satisfaction, after having assembled all the facts in achieving this. This workshop, which is based on and includes a copy of Hazel's book *How to write a non-boring family history* (Hale & Iremonger \$21.95) offers a practical approach to organising your historical research in a way that others will wish to read and recommend. Do join us at the Bentinck Conference Centre 10-4pm on Saturday 7 June \$80/75, also includes lunch. **Bookings essential ph 0447 570 327.**

WARNER'S JEWELLERS

EST. 1912 ~ 4th Generation Jewellers

97 High Street, Woodend 3442

Tel: 5427 1573

**Manufacturing Jewellers and
Diamond Ring Makers**

Stocking: Portmeirion, Whitehall,
Queens, Pimpernel, Royal Doulton,
Cherished Teddies, Royal Sengalor.

BodyMinding
alexander technique: an education for living well.

Alexander Technique

Reduce, manage or eliminate **stress headaches, muscle and joint pain.** The Alexander Technique addresses the underlying problems and puts you back into control for yourself.

**Margaret McGill has been teaching
Alexander Technique for more than 20 years.**

Contact Margaret on **5428 6461**
for further information.

Eating Out, In & Around Woodend

Talking Thread's Mid Winter Luncheon

It's that time of year again, with winter upon us the women of "Talking Threads" are preparing to host another of their very successful Mid Winter Ladies Luncheons. All the proceeds for 2008 will go directly to the Woodend Children's Park, to assist all the fabulous fund raising the Park Committee has been doing to see the dream of a Children's Park established in Woodend becomes a reality.

With hot soulful soups, sweets and a complimentary glass of champagne – there is no better way to share an afternoon of laughs and enjoy the wonderful community spirit of Woodend.

The Raffle this year is truly something special, with all Prizes being lovingly and creatively hand made by the wonderfully talented ladies of "Talking Threads" – from children's toys, cushions and quilts – there will be something for everyone.

We hope that you can join us from 12 noon till school pick up on Monday 14th July and support the fundraising for the Woodend Children's Park.

Tickets are \$25 and can be purchased from Monday June 16th at the Westpac Bank – Woodend or by contacting, Sharyn Frantz 5427 1692, Rhonda Hill 5427 2085 or Annie Rowland on 5427 1997; tickets are limited so get in quick! Can't wait to see you there.

Submitted by Annie Rowland



MOUNT MACEDON WINERY
your local winery

winter opening hours: Weekends & public holidays 11-5
433 Bawden (Douglas) Road, Woodend / Mt Macedon
www.mountmacedonwinery.com.au
5427 2735



Cafe Colenso
Fabulous coffee
Breakfast-brunch-lunch
Freshly baked cakes and bread
Fully Licensed & BYO

Now open Wednesday to Sunday 8.30 – 4.30

42 Anslow St, Woodend Phone 5427 2007

KYNETON BOWLING CLUB

Newly opened – our beautiful dining room lends itself to all celebrations. Our Chef prepares wonderful culinary delights using superb fresh produce.



Lunch: Tues - Sun 12pm - 2pm
Dinner: Mon-Thurs 6pm-8.30pm, Fri & Sat 6pm-9pm
Bookings essential
Phone: 5422 1902
Pot 'n Parma night every Tuesday for only \$12.50!
(or a glass of house wine)
Mollison St, Kyneton

Not Just Fudge

126 High Street, Woodend

Home-made Fudge,
Natural Ice Cream, Coffee,
Tea, Herbal Tea, Milk & Thick
Shakes, Cakes, Sandwiches,
Freshly Squeezed Fruit &
Vegetable Juices

Ph: 5427 2210
Fax: 5427 2880

* FAB FOOD
* FUNCTIONS & CATERING
BY ARRANGEMENT
Bookings Essential
BYO wine only
Light Snacks Mondays
Free entry for
Macedon Ranges residents

Tel: 5427 0295
Large range of Australiana Gifts

**Hanging
Rock
Café &
Country
House**

Schatzi's Frank & Rose
Gorlitz

Open 7 Days
8am till late
breakfast, lunch & dinner

For Bookings
Ph/Fax 5427 4447
Mobile 0403 423 537
"Where Lovers of Food Eat"



The Bentinck of Woodend

CONFERENCE – WEDDING – RESTAURANT

RESTAURANT NOW OPEN

Dinner

Thurs – Sat from 6.30pm

Sunday

Breakfast from 8 am
Lunch from 12 pm
Afternoon Indulgences from 3pm

The Bentinck
8 Carlisle Street WOODEND VIC
Ph: 5427 2944

**Book Now for a unique
dining experience**

GISBORNE PEAK WINES



Short Road, Gisborne South

**Wonderful wines &
wood-fired pizzas**

Casual, fun & friendly. All weather venue

Tel 5428 2228
www.gisbornepeakwines.com.au

victoria
HOTEL

WOODEND

Bistro

Open 7 days lunch & dinner
Daily blackboard specials
Macedon Region wines, open fires.

Bar

Counter meals daily
Fridays tradesman's lunch — \$10 pot & parma
Match your wit against "Barry"
Digital video jukebox on plasma screen

Function Room

Available 7 days
Private parties, meetings & celebrations
Seated dining for up to 80 guests
Private bar, open fire
Balcony views of Mt Macedon

Bookings 5427 2721

67 High Street, Woodend

www.vicwoodend.com.au



Rock View Homestead
Receptions & Functions
Ph: 5427 2076

Restaurant, Roasts & Local Wines
Sunday lunches available pre-booking only
On Mt Macedon Rd, between Braemar College
& Straws Lane

5427 2076



Kyneton Ridge Estate
MACEDON RANGES

Open Weekends
tastings • pizza • coffee

Wine crafted with pride.

Queen's Birthday: Sunday Lunch & Live background music, featuring the enchanting Christie Heart with Cliff and his Shadow

July: Warm in Winter: Each Sunday in July, "SSM" Sunday Soups Sweets and Music, enjoy hearty soup, dessert and live music

Phone: 5422 7377

Kyneton Ridge Estate
517 Blackhill Road, Kyneton
enter via Halloran's Lane
www.kynetonridge.com.au

"Magnificent" Art MAD Gallery & Café

19 High Street, Lancefield
Tel: 5429 1432

Web: www.madgallery.com.au

Open everyday 10am – 5pm

We're proud of our coffee and promise you the best coffee around, or your money back!

Till 19th June: Working Outside the Square II exhibition

HOLGATE'S BAR & RESTAURANT

Microbrewery Hotel with cosy open fires, stained glass windows and friendly atmosphere. Award winning local beer. Delicious meals including house-made bread, pasta and desserts. Function room and stylish accommodation now available.

Open for Lunch Tues-Sun. Open for Dinner 7 Days

79 High Street, Woodend

Ph 03 5427 2510



All news items, articles and community news columns must be received by 15th of each month.

WOODEND
Proud to be Pokie-free

CASTLEMAINE—GISBORNE

CLEANING SERVICE

CHRISTINE ADAMS, FRYERS ROAD, ELPHINSTONE 3448

Carpet Cleaning Specialists

Duct Cleaning, Window Cleaning, etc.

For all your cleaning requirements

- no job too big or too small -
obligation-free quotes

Tel: 5473 3307 Fax: 5473 3310

Mobile: 0419 006 591

To Breed or not to Breed?

Equine Breeding Information Evening

As part of their commitment to equine care in the Macedon Ranges, Tony's Practice will present an information evening for horse owners and breeders, or those contemplating breeding a horse this season. All are welcome to this event.

The evening will consist of three speakers, covering a range of topics relevant to the breeding of your broodmare and ample time for questions.

Dr Tony Hanegraaf and Dr Poss Thomson (Tony's Practice) will speak about breeding options, reproductive scanning and the general health of your broodmare.

Brooke Charteris (Kentucky Equine Research) will speak on principles of feeding your broodmare and foal.

For more information or to book a ticket contact Tony's Practice on 5427 4344 or call into 12 Anslow Street, Woodend. The evening will be held on Thursday 19th June at 7pm at the Woodend Community Centre, Main Hall, with a gold coin donation towards the Woodend Children's Park. Please make bookings by calling Tony's Practice on 5427 4344 before June 16th.



CARPENTRY

REGISTERED BUILDING PRACTITIONER

0401 499 898

EXTENSIONS RENOVATIONS
ALTERATIONS

History launched

Cattlemen of the High Country, second edition, was recently launched at Aesop's Attic, High Street, Kyneton.

Tor Holth died in 1994 but Jane has produced a new edition of their book which looks at the devastation of the cattlemen's leases on the Bogong High Plains. The family histories, yarns and poems of the first edition are all in this book which provides an enduring record of a breed of Australians who are folk heroes in their own right. These tough and resourceful cattlemen endured the snow and freezing conditions of winter and the threat of bushfires in summer. When mustering or checking their cattle, they sheltered in little huts which they built from the timber at hand. They trained their indispensable dogs and hardy stockhorses and were masters of bushcraft. Their courage and endurance was supported by an indomitable sense of humour.

For more information contact Jane Holth, 5427 1741

Joanne Duncan

STATE MEMBER FOR MACEDON

MP

Friends,

At the heart of good governance is honesty & accountability, as well as an understanding of the issues confronting the whole of society.

If you have any concerns you wish to raise, please do so.

Feel free to call me on:

5428 2138



Dear Friends

Last month I was pleased to announce improvements to health care services in the Macedon Ranges as part of the State Budget. Locally, the ambulance service in Woodend will receive funding for additional paramedics.

Two more paramedics will be added to the service to ensure that residents and visitors to our community receive a high level of care when they need it most.

Health care is an important issue for all of us, and these days we are always reminded of the health benefits of physical activity. We are very fortunate to have many clubs, associations and neighbourhood houses in our community who provide a variety of opportunities to take up a new hobby or sport, enrol in a course, or simply share a coffee with friends.

This month, I would like to congratulate the Macedon Ranges Tennis Association and the Woodend Tennis Association who were successful in receiving VicHealth Active Club Grant to provide more opportunities for residents to take up tennis.

I would also like to congratulate the Woodend Neighbourhood Centre who were also successful in applying for funds to install roof insulation to improve the comfort for students attending courses during winter.

Clubs, associations and neighbourhood centres contribute enormously to making this a great place to live, and I would like to acknowledge all these groups for their commitment and ongoing efforts.

Warm regards,

JOANNE DUNCAN MP

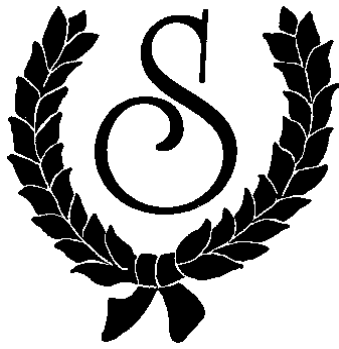
State Member for Macedon

a few good WORDS

Editorials, Publicity, Advertising, Proof-reading, Letters.

Nadine Hartnett Freelance Writer	0439 399 838 nhartnet@bigpond.net.au
-------------------------------------	---

WOODEND
Proud to be Pokie-free



T.J. SCOTT & SON

Funeral Directors

- Serving the Macedon Ranges for almost 70 years
- Available 7 days a week, 24 hours a day
- Specializing in Pre-paid funerals

For further information, call the Scott family:
John, Kelly, Jack, Paul & Daniel.

5 Piper Street
Kyneton
54226455

46 Aitken Street
Gisborne
54284155

www.tjscottandson.com.au
tjscott@kyneton.net.au

Woodend Red Cross

Woodend Red Cross is holding a Dutch Auction on Thursday June 5 at 2pm in SES building Urquhart Street Woodend. Well known local identity Helen Roberts will be the caller.

There will be a raffle, door prize and afternoon tea. Please come along and bring a friend to ensure this event is a success. Proceeds in aid of the **Red Cross Overseas Appeal**. RSVP for catering purposes, please phone 5427 4080. For members there will be a short meeting commencing at 1.30 before the Auction.

Margaret Gaal, Secretary.

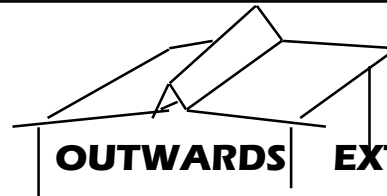
Regular business card advertisements
(90mm x 55mm) are \$38 inc GST per month
- book & pay 11 months and get 10% off.

Your Memories to DVD

- * 8 mm/16 mm Films
- * Compact VHS
- * Mini DV
- * VHS

Discount for Quantity

Top Hat Productions
Ph: 5422 3930



OUTWARDS EXTENSIONS

STEEL FRAMED STRUCTURES

- CARPORTS
- PERGOLAS
- VERANDAHS
- DECKINGS

FENCING

- WOVEN WIRE
- TUBULAR
- COLOURBOND

GARDEN/OUTBACK SHEDS

ULTRAPANEL CONSTRUCTIONS

ALL CUSTOM BUILT TO YOUR DESIGN, SIZE & REQUIREMENTS



McKIBBIN CARPENTRY
HOUSING
GENERAL BUILDING
CONSTRUCTION WORKS

ROSS

0418 364 125

03 5427 2849

Friends of Macedon Ranges Libraries (FOMRL)

We are delighted to welcome Maria Wolfe as the new manager for the Woodend library. Call in to say hello and collect some great books and videos. The new, extended opening hours make this easier. The library is now open on Tuesday and over lunch time. Check the opening times, the catalogue and reserve your books, all online at www.ncgrl.vic.gov.au

If you need to catch up with the news, daily papers and comfy chairs are available. There is also recently updated computer access. Once Maria has settled in we'll have a get together to hear her plans.

FOMRL will be sponsoring popular children's author Elizabeth Honey as part of the Woodend Winter Arts Festival www.woodendwinterartsfestival.org.au Elizabeth will be talking about her two latest books, both collaborations, in a session 'Two heads are better than one'. **This is FREE event for children of all ages** at the library on Saturday 7 June at 10.30am. No bookings necessary, just come along.



WOODEND & DISTRICT PODIATRY

John F. Shapland

Resident Practitioner

Reg. Department Veteran's Affairs

5427 2064

Business and After Hours

1895 Mt. Macedon Rd., Woodend



One plus one ... The Kids Craft Cafe in Gisborne is the latest meeting place for Mums, Dads, Kids and Grandparents.

Specializing in fine coffee and natural delights, whilst offering an interactive space for your children to be crafty and creative. No booking required!!

We offer a special craft package: 1 Craft, 1 Drawing and 1 drink for \$6.50.

Kids party plans are also available from \$11.50 per child, catering specifically for the birthday boy or girl. - Booking required

So come join us for.....

- * Plaster painting * Beading * Card making *
- * Poster painting * Sand Art *

**54 Aitken Street
Gisborne,
Tues – Fri 9.30 am – 4.30pm Saturday 9.00am – 2pm
Ph: 5420 7721**



Historic HOME & GARDEN

Contemporary Textiles Exhibition

A superb exhibition of beautifully handcrafted textiles including items from the Leviny family collection (late 19th and 20th Centuries). 7-15 June

Exhibition open 10am - 4pm daily. Admission \$5, school children free
42 Hunter Street, Castlemaine ~ Ph: 5472 1032
admin@budacastlemaine.org www.budacastlemaine.org

Contemporary Textiles

ENTRIES in the inaugural Contemporary Australian Textiles Award Exhibition have exceeded 100 in number promising a vibrant and exciting display for the public at Buda Historic Home and Garden commencing June 7th.

Event convenor, Tom Comerford, is delighted with the response received to the awards that are designed to commemorate the talent of the Leviny women who lived at Buda for over a century.

“A new concept can sometimes be hard to get started but in this instance we have received Australia-wide interest and even one entry from Canada,” Tom said.

He added that the event is modelled on the highly successful Australian Contemporary Silver Awards run every second year at Buda.

Entries will be displayed in Buda’s delightful Garden Room from June 7th to 15th. Open daily between 10am and 4.30pm, entry is \$5 with children of school age free.

Items from the Leviny collection including 19th and 20th Century handcrafted textiles will also be on display in the house. For further information please ring 5472 1032 during office hours or go to www.budacastlemaine.org

**Rock ‘n’ Roll at
Glen Erin**

*Grease your hair and put on your dancing shoes and swing into action for a fun night of Rockabilly with
The Black Hill Ramblers*

Saturday 28th June 2008

Entertainment Only

8.30pm

\$15.00 per person

Beverages Available at Bar Prices

Dinner & Entertainment

6.00pm

\$55.00 per person

Inclusive of a 3 course dinner and glass of wine

Beverages Available at Bar Prices

Strictly No B.Y.O.

Glen Erin Royal Tennis Ballroom

Glen Erin at Romsey

Accommodation Packages Available

Bookings 5429 5428

Coming Events

Christmas in July Dinner – Saturday 26th July

Christmas in July Luncheon – Sunday 27th July

Over 30’s Desperate & Dateless Ball - Saturday 20th September

Pre Spring Carnival Fashion Parade – Tuesday 7th October

BGE

Joinery *Quality you deserve*

- Kitchens • Shop fittings • Bars

BRAD ELSE

Mob: 0412 355 548 Ph: 5422 2517

Factory 2/27 Redesdale Rd., Kyneton

Visit our Showroom 166B Mollison St, Kyneton

11am – 5pm Fridays or by appointment

WOODEND

NURSERY &

GARDEN SUPPLIES

OPEN 7 DAYS

“LOCAL KNOWLEDGE FOR LOCAL CONDITIONS”

36 URQUHART ST, WOODEND

Tel: 5427 1866 Mobile: 0428 271 866

Full range of garden & landscape needs

Rock, Soil, Sands, Sleepers

Bobcat hire



**Total
Financial
Solutions
Australia**



*Helping you save
for a*

“Rainy Day”

Bob Nixon

B.Com., Dip.Ed., Dip.A.I.I., Cert. IV Fin. Plng., F.A.F.A.

**Authorised Representative,
Total Financial Solutions Australia Pty Ltd
ABN 58 003 636 968 AFSL No.246545.**

Shop 10, 34a Hamilton Street. Gisborne Vic 3437

Ph: 03 5428 0123

Fax: 03 5420 7710

E: bobnixon@netcon.net.au

W: www.bobnixon.com.au

**It's Stocktake
Sale time
again!**

**Spend \$50 or more
to enter the
draw for our
fabulous
giveaway**



**Home
Kitchen
Giftware
OPEN 7 DAYS**

Blue Orange Concepts
Shop 2, 130 High Street, Woodend. Ph 5427 4500

Photographs by Marnie
Naturally, beautiful portraits taken on location

- Babies & Children
- Victorian & Costume • Weddings •

**Marnie Tole
Photographer**

03 5427 4668

0405 326 324

Woodend

marnietole@yahoo.com.au

Woodend Art Group

The Woodend Art Group is looking forward to our Winter Art Show, to be held on the Queen's Birthday Weekend, 7, 8 and 9 June.

The Art Rooms at Woodend Railway Station will be open daily from 10 – 4pm with an exhibition and sale of contemporary and traditional paintings, as well as glass works by Ettore.

There will be demonstrations by artists in a variety of media and visitors will be invited to contribute to a mural to be painted over the weekend.

WAG looks forward to welcoming local residents and visitors to this exhibition. Entry is free, the rooms are warm, and coffee and tea will be available!

For more information, telephone Pamela Simmons 5427 1659.

Submitted by Pamela Simmons

A Masquerade Party!

This year a night of intrigue and mystery awaits you at the St Ambrose Annual Supper Dance. Our theme is *Masquerade – A Night of Disguise*.

There are still a few mysterious spots left so you'll need to be quick to secure a ticket for Saturday 21st June.

Find the masked St Ambrose Hall in Templeton St Woodend where live band, The Caam, once again promises to keep the dance floor the place to be.

Tickets are \$25 and include champagne/sherry on arrival, buffet dessert and... mysterious door prizes!

BYO drinks and nibbles.

Be daring...be wise...don't be a fool...come in disguise...

Please call St Ambrose School Office 5427 1285 to secure your ticket.

Submitted by Andrea Norden

NORTH CENTRAL ACUPUNCTURE & CHINESE MEDICINE

仁
心
仁
術

Gina Pilven

**BaHSc: Chinese Medicine
Acupuncturist
Chinese Herbalist
Health Rebates Apply***



**Westpac Bank Building
11/75 High Street, Woodend**

0405 467 418

'Special Events' is proudly sponsored by the 19th HOLE SHOPPING CENTRE

Upcoming Events and Meetings

June

- 5 '11th Hour' at Woodend Neighbourhood Centre 8pm
- 5 World Environment Day
- 5 Woodend Red Cross - Dutch Auction 2pm SES building
- 6 Woodend Senior Citizens meeting and fun afternoon
- 6-9 Woodend Winter Arts Festival, www.woodendwinterartsfestival.org.au
- 7 Buda textiles exhibition runs till 15th June
- 10 Macedon Ranges BaBs social at Roomba's Gisborne
- 11 Men's session on depression, anxiety & stress, Kyneton CFA
- 12 Woodend Auxilliary of Kyneton Hospital meeting 1.30 pm
- 15 Slate Creek Blackgum reserve working bee
- 16 Men's session on depression, anxiety & stress, Gisborne Football Club
- 16 RSL Women's Auxilliary bus trip to Castlemaine
- 19 Equine breeding information evening 5427 4344
- 20 Sportsmans' Night Fundraiser Football/Netball Club rooms 5427 1541
- 21 World Refugee Day BBQ outside Coles
- 21 Rotary present Suzannah Espie in performance at Macedon Views
- 21 Masquerade Party St Ambrose Supper Dance
- 21 Buteyko infomation seminar Sunbury 9740 3977
- 21 Newham Landcare seminar on thermal efficiency
- 22 Woodend & Five Mile Creek Landcare working bee near Info Centre

July

- 3 'The Corporation' at Woodend Neighbourhood Centre 8pm
- 5 Breast Awareness info session 1300 66 17 66
- 7 ABA Meeting at Victorian Hotel Woodend
- 7 Public Lecture at Buda Castlemaine, topic Textiles
- 14 Talking Threads mid-winter Ladies Luncheon 5427 1692
- 18 ABA Meeting Kyneton
- 19 Landcare AGM

Australian Breastfeeding Association,
Heather 5427 2398

Daylight Masonic Lodge, 5427 2480

Friends of Macedon Ranges Library,
Chris/Bill 5427 2469

Garden Club 5427 3834

Living Word Christian Church 5429 6327

Historical Society, Courthouse, 5427 2523

Macedon Ranges & District Motor Club, 10 Webb Cres,
New Gisborne 1st Wednesday each month 8pm

Macedon Ranges Animal Aid, Buffalo Sports Stadium,
5427 1752

Macedon Ranges Bridge Club, 5427 4440

Macedon Ranges Families of Children with Disabilities
Support Group, 5427 3365

Macedon Ranges Residents Assc. 5427 1481 or 5427
2651

Macedon Ranges Communicators (ITC), 5427 2669

Macedon Ranges Photographic Society, 1st Tues of
month, Ron Mathews 5427 3284

Macedon Ranges Social Club (activities for singles
over 35) phone 9740 5517 or 9744 2697

Neurological Support Group "Contacts", Woodend
Community Centre

Panic & Anxiety Group, 5427 8256

Parents & Carers of Children with Special Needs,
Woodend Community Centre

Probus, 5427 2003

R.S.L., Anslow Street 5427 3122

Red Cross, 5427 1260

Rotary Club of Woodend, meetings weekly at

Holgate's Leadlight Room, Kai 5427 1029

St. Mary's Guild, 11am, 4th Wednesday of month

St. Mary's Street Stall, 9-12 noon outside Woodend

Newsagency (2nd Sat of the month)

Woodend & Five Mile Creek Landcare Group,
Jo 5427 1909 or Doug 5427 0666, 3rd Tues Meeting,
4th Sunday Working Bee

Woodend Angling Club, RSL Hall, 5427 2395

Woodend Art Group, Railway Station, 5422 6172 or 5427
1659

Woodend Business & Tourism Association, Cori
5427 3434, 2nd Tues of month (BATA)

Woodend Lions Club, Meetings 2nd/4th Wednesday
each month, ph Maureen Dougherty 5427 4949

Woodend Model Railway Club, Buffalo Stadium

Woodend Pony Club, 5427 0487

Woodend Senior Citizens Club, Comm. Centre

Woodend SES Training Nights, Urquhart St

Woodend Winter Arts Festival Inc., Jacky 5427 1560

CLUBS: PLEASE KEEP THESE DETAILS UP TO DATE



Ian Marks Liquor
5427 3961

Blue Orange Concepts: homeware
5427 4500

Kosmac & Clemens: optometrists
5427 4577

Woodend Pizza & Pasta
5427 3777

Coles Supermarket
5427 2377

*Collier Office & Business Assist
and Woodend Copy Centre*
5427 3092

Pets Haven
5427 3603

Mitre-10 Woodend Hardware
5427 2314

BP Woodend
5427 2248

Target Country
5427 4366

Macedon Ranges Travel Services
5427 4777

TBA

TBA

Woodend Cycles
5427 2662

Salvation Army Family Store
5427 4421

Loose Change Bargains
5427 4466

Bodywise Underwear
1300 66 17 66

Australia Post
5427 2600

Jasper Art & Handwork Supplies
5427 4455

The Spa Beauty Therapy Centre
5427 3322

HIGH STREET SHOPS

Color Me Cooper: clothing/gifts
5427 1454

Chelleon For Hair
5427 3246

Not Just Fudge
5427 2210

RT Edgar Real Estate
5427 1222

Woodend Bakery Cafe
5427 3434

Meta Massage

REMEDIAL MASSAGE, SHIATSU, REIKI
Raymond White

Telephone 0411 268 336

or 5427 4237 for an appointment

18 years experience • Chronic and acute conditions
Sports injuries • Rehab work

News from Woodend Kindergarten

Woodend Kindergarten is going from strength to strength with another year packed full of fun and educational activities for our pre-schoolers. There are over 110 children enrolled at Woodend Kindergarten this year with 86 participating in the Kindergarten year and another 35 in pre-Kinder. They are all having a great time and needless to say, keeping staff on their toes. During May, the children celebrated Mother's Day by making wonderful gifts and cards and, where possible, bringing Mum into Kinder to be part of all the fun.

This family oriented activity built on the fantastic success of our Welcome BBQ Breakfast which was held on Saturday 19 April at the Kindergarten and was made possible by all the hard working committee members and their families who helped out on the day. It was a great morning out for all the families who attended and the children especially enjoyed showing off the Kindergarten to their parents, siblings and other family members. A special thank you must go to Bourkie's Bakery who donated all the bread and rolls for the BBQ Breakfast and to the Fisher family for donating water and juice for the event.

Woodend is blessed to have such a great Kindergarten facility with highly qualified and experienced staff. The children will definitely enjoy continuing their educational and social development in such a wonderful environment and the older Kindergarten groups will shortly also be attending special performances by the Lightning Creek Band and they are bound to really enjoy this fabulous group and the experience.

During the year, the Kindergarten Parents' Committee will again be conducting a series of fundraising activities and would very much appreciate any support from the community whenever possible. Keep an eye out for news of our Cake Stall later in the year where we will have a fantastic range of delicious goodies available for sale again.

Open Day for the Kindergarten took place in mid May. Anyone with queries about enrolling children at a Kindergarten in 2009 should contact the Enrolment Officer on 5422 0231.

Submitted by Nicole Cooper

E'Clips Hair & Beauty

Ph: (03)54 273 822
Shop 3/115 High Street
Woodend 3442



Relax ... we understand it's all about you!

Looking for info for your visitors?

Woodend Visitor Information Centre
High Street Woodend

Ph 1800 244 711

NEW GUMBOOT SOX ARE HERE



What a great idea!
Now your feet can be warm when you wear gumboots with these hand-made gumboot socks. Ideal for

gardeners, farmers and horse riders. Available in a range of colours and sizes for only \$22. We also have stocks of our colourful range of Designer Wellingtons.



ZAP2995

20% OFF ALL BAGS
Stocktake Clearance - Sale starts June 10

ZAPPA-do

Bed, Bath and You... and Baby too!

Shop 3, 87 High Street, Woodend. Ph: 5427 1270

FAIRHURST CONVEYANCING

For all your

Property Transfers

Ring Sue Fairhurst on

5427 2382

27 Urquhart Street, Woodend

MVCA & AIC

WOODEND

COMPUTER SERVICE
 Sales - Service - Training & Help
 THE BANK - OFFICE 3 - 75 HIGH ST WOODEND
JASON JOHNSON - 0400528129
pcs@live.com.au

World Refugee Day June 2008

In the current political climate people seeking asylum in Australia need our support more than ever.

Under the new federal government, 97.6% of all humanitarian cases have been rejected by our Minister for Immigration and Citizenship, Senator Chris Evans.

These rejections include: a young Ethiopian woman fleeing trafficking and rape; a young Chinese man facing terror and torture for his human rights beliefs; and an East Timorese grandmother facing destitution and homelessness away from her 3 Australian children and 6 Australian grandchildren.

Bridging Visa Es are still in place – meaning that people on these visas have no right to work, no access to Centrelink or healthcare benefits, and are totally dependant on our charity for basic needs such as food and shelter.

You can help these people by

- Supporting our World Refugee Day BBQ outside Coles Woodend on Saturday 21st June 2008 (9am – 1pm)
- Donating to our ongoing food collection on the day outside Coles, or regularly to drop off points at Collier Office and Business Assist, or all Woodend Churches.
- Joining our group – next meeting Tuesday July 8th 10.30am at Literary Latte Café or contact Pete Walsh 5427 3919 or 0418 393 261
- Attending a Vigil Service for World Refugee Day at St Mary's Woodend 7pm on Friday 20th June
- Writing a letter expressing your concerns to Senator Evans, Parliament House Canberra ACT 2600

Come and support us on 21st June at Coles. See you there.

Submitted by Rosie Baker,
 Macedon Ranges Rural Australians for Refugees

Regular business card advertisements (90mm x 55mm) are \$38 inc GST per month - book & pay 11 months and get 10% off.

TRIPLE



DRIVER TRAINING

Accredited Certificate III and IV Instructor
 Servicing Macedon Ranges and Surrounding Areas

Ph. Laurie

5427 1192
0419 005 185

Glen Erindulgence
 Wellness Centre

Nail Technician Station Rental

Flexible Days Available

Expressions of Interest **5429 5187**

sales@glenerin.com.au

Not having a whine: Tourism's vital for us

My complaint last month about the Macedon Ranges being left off a key winery district map was not just sour grapes – our wineries and tourism are vital to our local economy!

New figures out of Canberra show that our Macedon Ranges region attracts an average 126,000 domestic overnight visitors per year – and food and wine outlets are a huge drawcard.

And with the National Wine Centre of Australia having left us off its display of Australia's wine districts at its Adelaide centre, how many more are missing out on visiting us because they just don't know about our premier wineries and vineyards!

The Canberra tourism figures show that as well as the 126,000 domestic overnight visitors, we had a further 526,000 Australians who came into the Macedon Ranges Shire on day trips.

Of the 126,000 overnighters, 35,000 came from interstate – and if they've been to Adelaide they would not have known to come here because of our wines!

These latest tourism figures show that we need to capitalise on our tourist potential to benefit the local economy.

The overnight visitors spend around \$26 million per year in our Shire, while the day-trippers spent a further \$31 million.

The overnighters average 2.5 nights in the Shire – so that's a big boost to the bed-and-breakfast operations, the hotels and motels and the wineries which offer accommodation.

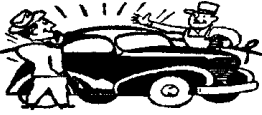
We're getting a good spread of age groups as part of our tourists – 47% are aged 15 to 44, 34% are aged 45 to 64 and 19% are older.

We're especially popular with young midlife singles and couples, and with parents with children, and the majority of the overnight visitors are travelling with family and/or friends and relatives.

Henry Bleeck. Your Local Macedon Ranges Shire Councillor.
 5422 7027

All news items, articles and community news columns must be received by 15th of each month.

Are you a community organisation looking to get your message out? We accept submissions from community groups for articles free of charge. For advertising rates see page 2 of this issue.



FIREBIRD MOTOR REPAIRS CAR WASH

31 URQUHART STREET
WOODEND 3442.

OPEN 7 DAYS
Phone:(03) 5427 2255

Special thanks for support

Thanks to all businesses listed below for donations to the very successful Newham Mechanics Institute Fundraising Trivia Night, which was held on May 10th.

- Bakery Woodend Café
- Bourkies Bakehouse
- Café Colenso
- CarasMatic
- Cleo's Fine Foods
- Collier Office & Business Assist
- Glens Country Meats
- Hanging Rock Winery
- Kerri's Bundle of Bears
- Literary Latte
- May Five Gifts
- Schatzzi's
- Switch Hairdressers
- The Key
- Woodend Pharmacy
- Woodend Fruit Market
- Family Donations
- Thank you to Colin Cook for loan of PA Equipment
- Also thanks to all Hall members for their contribution of gifts and cakes for supper.

Fran Spain, Secretary, Newham Mechanics Institute Inc

EpiGenetics

Healthy & Ageless Naturally!

Sukin

**organic and natural skin range
now available**

Shop 8/81 High St Woodend

Ph: 1300 737 146

KYNETON EQUIPMENT & PARTY HIRE

FOR ALL YOUR HIRING NEEDS

8-12 BEAUCHAMP ST PHONE (03) 5422 2311
KYNETON VIC 3444 FAX (03) 5422 2930

Email: kynhire@bigpond.net.au
website: www.kynetonhire.com.au

Australian Breastfeeding Association - Woodend and District

I thought I would give some general information about ABA for those who are interested. The idea of 'mothers supporting mothers' has been the foundation of the Australian Breastfeeding Association since it started in 1964. The first formal group meeting was held in late 1964 in Melbourne, and the first telephone Helpline was established in 1976, also in Melbourne. Since then the ABA helpline has expanded to all states and is available 7 days per week. The Helpline takes over 700 calls each week and is staffed by breastfeeding counsellors who have undergone a training course with ABA. All are volunteers and receive no payment for what they do. Breastfeeding counsellors offer empathy, and up-to-date information and suggestions, allowing each individual mother to make her own decisions to best suit her situation. The Victorian 24 hour Breastfeeding Helpline number is 9885 0653. ABA is now a registered training organisation, offering Certificate 4 qualifications in Breastfeeding Education (Counselling) or (Community). ABA is always looking for new breastfeeding counsellors and community educators, so ring me or check out the ABA website if you are interested in training. For those considering joining ABA there are lots of benefits, including a free book, discounted breast pump hire, and a bi-monthly magazine.

Now for local information. Our local ABA bulletin is out now. Anyone wanting a copy can email me on stapleya@hotmail.com or phone me on 5427 2398. Although group meetings are a service for ABA members, anyone from the local community is welcome to come along. All sorts of mothers have come to ABA groups, mothers who are breastfeeding, mothers who have finished, mothers who have fed for a short time, others a long-time. Most mothers come to meetings for a chat and a chance to meet other mothers! Our next three local meetings are: Wednesday 18th June from 10am at Bugalugs Play Centre in Kyneton, Monday evening 7th July from 7.30pm at Victorian Hotel Woodend and Friday 25th July from 10am at Heather's (13 Heron Street Woodend) with the topic "Surprising causes of low milk production and ideas to help".

Submitted by Heather Steele (5427 2398)

The fencin' fella

- colorbond
- tubular
- timber
- steel picket
- pool

Mini Earthmoving Kanga Loaders

Attachments include:
rotary hoe, soil leveling bar,
4 in 1 bucket, trenchers,
post hole diggers, tipper

SHAUN BARRON

MOB: 0407 232 900 or 5422 3488 AH

Woodend Green Corps May Update

By Marco Toscano, Woodend Green Corps Team Member
The Woodend Green Corps team have had another busy month at the Woodend Hub in Forrest Street working with Woodend Sustainable Living Community. They have continued to work hard and develop some useful landscaping and conservation knowledge and skills. On site, the paths and drainage are finished, the veggie garden and compost bins started, the chicken house has taken shape, and 500 mud bricks have been made.

The team were lucky to be able to work at the Kyneton Mens Shed to make all the trusses, posts and nest boxes needed for the chicken house. Thanks to Dan, John and Vince and the rest of the blokes at the shed for sharing their knowledge and skills in machinery use and woodwork.

The chicken house now has the footings, posts and beams standing. The real highlight of the month was seeing the trusses going up on top. Volunteer, Scott Boyle, has been an invaluable asset to the team guiding them through this construction phase. His contribution and enthusiasm in working with the team has been exceptional and of a huge help. Thanks Scott.

Russell Cadman designed a fantastic and attractive layout for the new permaculture garden incorporating circular 'keyhole' beds. His vision is now starting to come to fruition with the team laying out and digging the garden beds and paths. Four compost bins will be located next to the garden and chicken house and will form an integral part of the permaculture system.



Team member, Amanda Buckley sawing wood with John Quilan at the Kyneton Mens Shed

MACEDON RANGES SELF STORAGE

- * 7 day access
- * Individual units
- * Affordable prices
- * Insurance available
- * Now Fully Alarmed

Store your:

- * Cars
- * Boats
- * Business documents
- * Furniture etc.

Lot 3, Hoyle Court, Kyneton 5422 1898
(Off Beauchamp St) 5422 3488

SOLAR DIRECT

- Solar Hot Water
- Grid Interactive Solar Systems
- Stand Alone Power Systems

Ph: 1300 55 77 98

Mbl: 0411 269 489

Lancefield

The Green Corps team have also been working at Stanley Park with Richard Everard and Helen Kalajdzic from the Friends of Stanley Park Group. Lots of hand weeding and 'cut and paste' has made a big impact in helping to clear all the Cape Broom, Blackberry and Hawthorn which if left untreated will pose a threat to the natural habitat. The team will revegetate the cleared areas in the coming months.



Team Members working hard on the job.

Don't beat around the bush!

Talkin' about anxiety, depression and stress – a health forum for men. The session will cover topics including:

- Anxiety, depression and stress
- Loss and grief
- Retirement
- Isolation

Session options include:

Kyneton CFA, 48 Ebdon Street, Kyneton, Wednesday 11 June, 7pm to 9pm Or Gisborne Football Club, Social Rooms, Gardiner Reserve, Aitken Street, Gisborne, Monday 16 June, 7pm to 9pm

Mothers and fathers, sons and daughters, partners and friends are most welcome to attend.

RSVP: Gerard Feain, 5422 0247 or 0400 573 279 or email g.feain@macedon-ranges.vic.gov.au

Woodend Visitor Information Centre
High Street Woodend

Ph 1800 244 711

A big month for the CFA in May

The official Summer Fire Danger Period has now ended, but that does not mean that the danger of fire is over. While we attend most of our bush, grass and scrub fires over the warmer months, the CFA attends more structural fires (such as houses and sheds) and car accidents in the cooler, colder months. This is the time when people start using their fires, heaters and electric blankets again, and also ignore the warnings for black ice.

The CFA has prepared a special website for winter safety which can be seen at: www.checkyourhotspots.com

Election of Management Positions

The Woodend Fire Brigade recently held its bi-annual election for senior operative positions and the results were as follows:

Captain	Mick Christie
1st Lieutenant	Mike Dornau
2nd Lieutenant	Steve Ritchie
3rd Lieutenant	Geoff Wells
4th Lieutenant	Dave Muir
Communications Officer	Keith Mason
Secretary	Annette van Huffel
Treasurer	Steve Ritchie
Safety Officer	Nigel Parks
Fire Equipment Maintenance	Keith Beman
Member Support	Ray Colban
Association Representatives	Ray Colban & Dave Muir
Social Secretary	Annette van Huffel
Group Delegates	Brad Jepsen & Mick Christie
MFPC*	Phil Pringle & Mick Christie

* Municipal Fire Prevention Committee

Member of the Month – René 'Vroom' Vroomhout

Several issues ago we introduced you to Amber, our 'Dutch Treat', and now it is the turn of her husband René.

He was born in the Netherlands in a small village called Maasland, which is situated near the Greenhouse Area, where they grow a wide range of produce and flowers, including tomatoes and roses. Rene worked here for a few years growing roses and he can well attest to the fact that "proper roses do still have thorns!"

He moved to The Hague for studies and as a young student actually lived just around the corner from the famous (or infamous) Red Light district. This naturally sometimes led to meeting some interesting people and encountering some unusual situations – where vandalism, theft and even gunshots were quite common. However, it was also often very entertaining, such as having discussions about the Marquis De Sade's writings with a Columbian woman who 'worked' just around the corner.

He worked as a librarian in the Dutch Parliament, sometimes talking and joking with MP's ... "but I suppose when you get to be an MP you tend to lose your sense of humor". He also worked in dog kennels, picking up 'you know what' and being 'appreciated' by 40 dogs at once. On arrival in Australia he worked as an IT consultant in St Kilda.

René currently works as a customer service representative for Apollo Motorhomes in Keilor, where he rents out motorhomes, trying to solve issues and problems, and often has to say "Have a good holiday" up to 15 times a day.

He and Amber have lived in the Woodend area for

ZUMSTEIN



Zumstein Pty Ltd
Factory 1/32 Brooke Street
WOODEND VIC 3442
Ph 03 5427 4579
Fax 03 5427 3559
Mobile 0412 138 364

DESIGNER AND MAKER OF FINE FURNITURE AND JOINERY

solid and veneered furniture
external and internal doors
wardrobes, studies
laundries
bathroom furniture

"Third generation woodwork really shows"

almost two years now, having moved here in September 2006. Prior to that they lived in Westmeadows and then in Sunbury, just off the Gisborne South exit.

René has been a member of the Woodend CFA for nearly a year ... "although it feels like more, in a good way".

He has been to quite a few call outs in that short time, but the recent large fire in the Spring Hill area was his most important to date ... "it really showed me what I was training for. I also enjoy seeing members during training playing soccer with a BA strapped to their backs".

He joined the CFA to get to know people in the Woodend area "but more importantly because of last year's intensive smoke haze, newspaper reports of what can happen and feeling the need to put something back into the community".

continued next page

Paul Groves

Mobile 0414 928 491

Phone 5427 2171

Computer Sales, Repairs & Consulting

Home and Office Networking
Onsite Repairs and Maintenance
New Computer Systems

paul@pcweirdness.com

What does he enjoy most about the CFA? "A lot of people from different and yet similar backgrounds, joined together for one purpose".

What does he do in his spare time. "People tell me I'm pretty good at drawing cartoons and writing short stories. I'm doing some work in HTML, CSS and PHP. And lately, I have also purchased a 1969 Alfa Romeo that I'm trying to get to behave like I want to. My Alfa is something I bought as an answer to my childhood dreams ... one of the most beautiful automobiles ever!

"In my spare time, I listen to industrial ambient, black-and-death metal, and I watch Coen and Woo and late 1980s fantasy movies". Whatever that means, René!

If you live or work around Woodend – we need your help!

The Woodend CFA needs more members for Daytime Response, especially on week days. While we have a growing membership list, many of our members now work out of the region, which makes it difficult sometimes during weekdays to get enough members for a turnout. If you are around town during the week, and are interested in doing something really valuable for our community, please give us a call. We are ready to start your Minimum Skills training immediately, and you should be qualified in just a few months.

For further information contact Captain Mick Christie on 0419 870 601, call the Woodend CFA on 5427 2356, or visit the station in Urquhart Street. Or for the latest local information please visit our website: www.woodendcfa.org

The Woodend CFA is a volunteer emergency service, committed to Creating a Safer Community.

Submitted by Lieutenant Mike Dornau, Woodend CFA

**Armstrong Collins &
DeLacy
SOLICITORS**

Established 1867

**Commercial,
Property,
Estate and
Family Lawyers**

**Woodend Office:
81 High Street, Woodend
Phone 5427 1472 Fax 5427 3073**

**Kyneton Office:
143C Mollison Street, Kyneton
Phone 5422 1677 Fax 5422 3357**

BaBs welcomes pregnant women to a social night

The Macedon Ranges BaBs group is having another social evening from 7.30pm on Tuesday the 10th of June at Roomba's, 30 Aitken Street Gisborne, for 'soon to be mums' in the area.

Why? Because women like to talk! That and the fact that pregnancy is a time of radical changes and many women don't have a close family or support network nearby for reassurance during this journey.

The evening is to be purely a social gathering, in an informal, non judgmental environment –it doesn't matter if you're in the early days of your pregnancy or ready to birth; if you're going to be a young, older, single, married, professional or stay at home mum – this is a opportunity for women to share their experiences, fears and hopes. Come along and make a friend or two.

The social night was born from the Macedon Ranges Babies and Birthing (BaBs) Group, established last October. BaBs aim is information, education and support for pregnant women and mothers with young babies. The group recently moved its fortnightly "Peer Support" meetings from Woodend to Gisborne! Up and coming topics include "Sleep for Everyone" on the 28th of May; and "Playtime" on June the 23rd. Each meeting is facilitated by a local midwife, and when available, a guest speaker from the community will speak on the relevant topic. BaBs meet between 0930 and 1130 at the Gisborne Community Health Centre at 5 Neil Street, on the 2nd and 4th Monday of each month (during school terms only). For more info please contact Amanda - 0422 491 976 or Tanya – 0418 587 520,

WOODEND TAXIS

☎ 5427 2641

- Taxi Passengers
- Verbal Message Delivery
- Airport & Melbourne Service
- Also Pickup & Delivery of Letters & Very Small Parcels

Betty Valli
29 Urquhart Street, Woodend

Creative Palettes

More than 60 artists and local schools in the Macedon Ranges are taking part in Creative Palettes. Each artist is given a wooden palette and uses their imagination in any medium, any style, any theme. Last year's response was so terrific-palettes ranged from paintings, to ceramics, to textiles, even a five foot high wooden sculpture!

Hosted by The Gallery Mt Macedon all palettes will be on exhibition and sale during the Queens Birthday long weekend and continue for a month at the gallery 684 Mt Macedon Rd, Mt Macedon. We invite you to come along to the Cobaw Leisure Centre in Woodend during the festival and enjoy this unique event. Opening is Sat 11am.

Further information www.thegallerymtmacedon.com.au

Do you know anyone suffering:

- Headaches
- Back ache
- Constipation
- Irritable bowel
- Repeated colds
- Period pain or PMS
- Colic
- Bed wetting
- Fatigue
- Mood swings
- Asthma
- Food sensitivities

CHIROPRACTIC MAY BE THE ANSWER

Call for an appointment **Be In One Peace**
5422 6488 150 Mollison St
Dr Joanne Messenger B.App.Sc.(chiro) Kyneton 3444

The little one's shoes . . .

I can't put it off any longer. The cupboard is bare and we've been living on cereal and crackers for three days. I have to go to the supermarket. It's enough to strike fear into the heart of any mother with pre-schoolers.

There's the preamble which involves writing a list, and getting everybody dressed. I'm already tense. Shoes. They're never where you left them. At least the littlest one can go barefoot because she always insists on sitting in the trolley – usually on the bread.

Small town supermarkets are a real melting pot. Pleasantries are exchanged, friendships renewed and small continents exchange hands. With all the kids buttons being pushed, I feel like the cliché 'trying to keep an octopus in a string bag' intercepting four little arms grabbing for non essential but highly desirable items. *No* to the stickers, *No* to the lollies, *No* to the soft toys and *No* to all that mass marketed stuff that has found its way onto the shelves.

Near delirium makes the mind wander. If only we had a pub or a coffee shop at the supermarket. We could all just sit down together and do our catching up, instead of clogging the aisles with kids and trolleys and small talk.

A pub with a creche, and a virtual tour where you could point and click at a screen and do your shopping in comfort...and peace, and perhaps a knowledgeable man in a uniform to take the mystery out of buying batteries and light globes.

The elderly would no longer need to stave off the heart attack as that booming voice belts across the intercom "SERVICE ON REGISTER THREE PLEASE. SERVICE ON REGISTER THREEEEEEEE-YA". (Did someone call 'Bingo?') They'd be in the pub enjoying a cool lemonade, oblivious to it all. Soft music would play, and all would be well in the world.

Making my way past cash register three-ya to see what the hell was happening, the pub fantasy is abruptly shattered by the hysteria of my young ones, falling victim to the final and cruelest marketing ploy there is. Confectionary at the checkout.

Explaining that those lollies belong to the lady on the cash register and we're not allowed to have them, we get \$250 worth of groceries though only to find an empty wallet.

A search of the house reveals the missing credit cards, neatly aligned at the bottom of the toy box, next to the little one's shoes.

(One should always look there first!)

Submitted by Kathy Mexted



Supported by



THE SPORTSMAN'S NIGHT FUNDRAISER

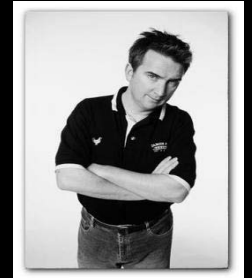
Tickets

\$15

**INCLUDES
FINGER FOOD**

Staring Damien Callinan

**Tickets available
from the
clubrooms
Thursday nights
or call
(03) 5427 1541**



**The real life story of a country football
club banned for a melee that got way out
of hand.**

FRIDAY 20th of JUNE 8pm

**AT WOODEND HESKET
FOOTBALL & NETBALL
CLUB ROOMS
FUNDRAISER**

@ GILBERT GORDON OVAL

The Sportsman's Night 20 June

Damian Callinan (*Skithouse*, *Before the Game*, 774 ABC, *The Wedge*) returns with what his mum thinks is his best show.

This Barry-nominated character comedian brings to life the colourful characters of a country footy club rallying to fight their ban from the competition after a melee. Bring a plate ... and your mum.

Nominated for the Barry Award and awarded Best Comedy in the Melbourne Fringe, Damian brings to life the colourful characters that make up "The Bodgy Creek Roosters." A struggling rural footy club banned from the competition for on and off field violence. Narrated through the eyes of a small local boy who balances his desire to be a documentary film-maker with the demands of a footy mad family.

"... one of Australia's premier comics ... one of the must see shows of the festival" *Impress*

"Callinan is clever, intelligent and terrifically talented ... Sportsman's Night is a huge success" *The Age*

"... one of the best shows on offer ... deserving of the wildest of applause" *Herald Sun*

"... Callinan's character work is superb" *The Age*

Book a ticket now. Limited numbers. Ph 5427 1541 or purchase from the clubrooms on Thursday nights.

**All news items, articles, advertising bookings
and community news columns must be
received by 15th of each month.**

TRADE & SERVICE DIRECTORY

ANIMAL CARE

**MACEDON RANGES
PET CARE**
15 years animal nursing.
Dog walking, feed household pets &
farm animals while on holidays.
Ph: Judy on 5427 1352

AGRICULTURAL CONTRACTOR

**PHILIP BEATTIE PTY LTD
AGRICULTURAL CONTRACTOR**
Hay & Silage Round Bales
Mowing Small Bales
Raking Large Bales
Spreading Ploughing Sowing
45 Millers Lane Ph (03) 5427 0702
Newham 3442 Fax (03) 5427 0702
beattie@netcon.net.au Mob 0419 573 226

STONELAYING & PAVING

DUNN Stonemason & Paver
specialising in

- Retaining Walls
- Drystone Walls
- Stone Houses
- Paving
- Over 20 years' experience

Cameron Dunn
Ph (03) 5427 4778 Mob 0429 162 589

PSYCHOLOGIST

Sam Luxemburg
Registered Psychologist

- Personal Counselling in Woodend & Romsey (Medicare rebate available)
- Counselling Training
- Myers-Briggs personality testing

Phone: 0428 270 401
www.luxcollege.com.au

COUNSELLING

Keryn Allan COUNSELLOR
Dip. Prof. Couns.,
M.A.C.A.

- Grief & Loss
- Trauma
- Stress, anxiety & depression
- Anger management
- Workplace issues
- Behavioural problems

Phone: 0417 011 300
Email: kezallan@ozemail.com.au

DRESSMAKER

Beryl's Tailoring
DRESSMAKING, ALTERATIONS,
BRIDAL, EVENING & DAY WEAR,
LADIES AND MEN'S REPAIRS
Beryl Bachelor
QUALIFIED DRESSMAKER, NEWHAM
BY APPOINTMENT ONLY
MON TO FRI 9 - 5
5427 0568 0418 510 179

TREE SERVICES

A&P Tree Services

- tree pruning / removal • stump removal
- tree planting / transplanting • rope & harness climbing
- confined space removal • fully insured

Professional commercial & residential tree maintenance
all work carried out by qualified arborist
Call Anthony **0417 059 969**

HOME MAINTENANCE

Home & garden maintenance &
landscaping service including
decking, pergolas, carpentry &
painting.
Stuart 0409 150 629
AH 5427 2465

QUIT SMOKING

QUIT CIGARETTES
In Sixty Minutes
GUARANTEED!
Lose Weight For Life
Call Now
1300 737 146

RUBBISH REMOVAL

**CALDER
ENVIRONMENTAL SERVICES**
Your local supplier of rubbish removal skips
from 2 to 15 cubic metres.
We deliver • You fill • We remove
WE BUY OLD CARS & SCRAP METAL
Scrap bins supplied
Conditions apply
Prompt reliable service
0428 509 525

GATES, FENCING, PAVING

GATES, FENCING & PAVING

- Automated Gates
- Colorbond Sheet Fencing • Pool Fencing
- Timber & Steel Picket
- Gates Made to Order

FREE MEASURE & QUOTE
PHONE LAURIE 0419 005 185
5427 1192

METAL GATES

BVM Metalcraft
SPECIALIZING IN OLD WORLD AND
MODERN STYLE GATES
STEEL BALUSTRATING INCLUDING STAINLESS STEEL
ROPE AND WROUGHT IRON, PUNCHED RAIL FENCING
ALL MATERIALS USED ARE
GALVANIZED OR ZINC PLATED
FINISHED IN YOUR CHOICE OF POWDERCOAT
OUR DESIGN OR YOURS
METAL POLISHING - ALLOYS, BRASS, STAINLESS STEEL
CONTACT BEN 0422 288 768
FOR A FREE QUOTE

ELECTRICAL SERVICES

RML Electrical REC 15642
Installation - Maintenance - Drafting
Robert (Rolly) Leslie
Mobile 0438 347 896
Tele/Fax (03) 5427 0197
9 Ingletons Road
Cherokee, 3434

EARTHMOVING

**BLACK FOREST
EARTHWORKS**
Bobcat & Tipper Hire
Driveways, crush rock deliveries
Rubbish removal
Contact: Dave 0412 840 051

PLUMBING SERVICES

Need a plumber?
For reliable, professional, local service

- Domestic
- Commercial
- Industrial

Maintenance Work
Call Mal: **0423 204 277 5427 3315**

Trade Page Ads are \$25 per month inc GST. Pay for 11 months in advance and receive 10% discount.

Heritage Society News

This is the last extract from the *Woodend Star* Saturday 14th September, 1918 which concludes the account of the opening of **Woodend's Avenue of Honour**.

The programme commenced with a procession from the town, marshalled by Sergeant Skehan, the district recruiting officer, assisted by Mr. S. Harris, and led by Senior-Cadet Haslett, of Newbam, bearing a Union Jack. Following came the Anzac Band of 15 performers, then several returned soldiers, a good muster of Senior Cadets, children of the State Convent and other schools, in large numbers; shire councillors and members of the avenue committee, members of the Loyal Woodend Lodge, M.U.I.O.O.F., A.N.A. and H.A.C.B.S., and civilians, the whole stretching out to a considerable length, and making a very pleasing turn-out, and giving added significance to a fine display of bunting made in the town arranged, mainly, by Messrs. H. J. Brown and S. Harris who also carried out similar work most effectively at the avenue, at the entrance to which a beautiful arch, covered with ferns, and embellished with wattle blossom and flags, had been erected by Mr. C. H. Overton, assisted by Messrs. J. Fisher and L. Overton. The arch was the suggestion of Mr. Overton himself, and, though its erection was not commenced until only a few hours before the time appointed for the opening of the avenue, all was in readiness in good time, and so a completeness that deserved and received general admiration was given to the whole of the day's decorative scheme. Here, too, it may be noted that a large marquee was erected, at a point about midway along the avenue by Messrs. Overton, Lee, Harris and Cr. J. H. Thorburn for the entertainment of the visitors and the convenience of the many ladies who undertook to provide and dispense refreshments at close of the ceremonial proceedings – an undertaking of considerable magnitude, but one, all the same, that was most excellently managed, and without regard to trouble, expense, or any consideration whatever other than the one united determination to do everything connected with it thoroughly and worthily – and that being achieved, in a way exceeding all expectations, the ladies were doubtless satisfied, while those catered for in such large numbers, and with so much attention and liberality, could not have been otherwise than appreciative.

At the avenue the proceedings were in the hands of the newly-elected president of the shire (Cr. Don), who performed the many duties devolving upon him in a capable and efficient manner, and at the outset, after the band, to which much of the success of the function was undoubtedly due, had played the National Anthem, appropriately explained the object of the gathering and very suitably introduced the visiting politicians – the Hons. Chanter, McLeod, and Mr. Cameron, afterwards calling upon the first-named to open the avenue. across which a band of red, white and blue ribbon 27 yards in length had been stretched. The avenue had been similarly "closed", pending the completion of the ceremony, at the other end, this idea being the outcome of a suggestion made by the secretary to the committee (Mr. A. F. Daniel), upon whom a great deal of work necessarily devolved, and by whom, it is but just to say, it was performed with painstaking efficiency, arising from a keen and most commendable interest in the movement from its inception. Souvenir pieces of ribbon were afterwards sold at sixpence each and from this source the substantial sum of twelve pounds two shillings and sixpence was realised.

Mr. Chanter spoke at some length in his opening address. He began by claiming an acquaintance with the district, having in his boyhood days lived at Tylden, where the remains of his departed and revered mother are still resting. He then went on to explain that he had much pleasure in coming to Woodend that day, as a substitute for Mr. Jowett, and to assist in doing honour to the brave young men who had gone forth from this district to fight for those principles for which Great Britain had entered into the war. The Australians had proved themselves equal to any other men on God's earth for love of country, and had shown themselves capable of glorious deeds in defence of the Empire to which they belonged, and

of the liberties they had enjoyed. True, many had fallen – some from this district, but their memories would not only be perpetuated by the trees planted here in their honour, but would also be enshrined in the hearts of the people for all time. It had been said that there was no need for Australia to have gone into the war, but there was every need for her doing so, not only as part of the grand old motherland, but for other reasons, amongst which was the fact that this fair land was looked upon as a first prize in the great war gamble initiated by the greatest monsters the world had ever seen. People did not realise what they had been spared from, for, if they did, the actions of at least some of them would certainly be very different from what they were at the present time. Under German rule Australia would have been no longer free, and it was only the protecting arm of the motherland that had held them safe. It was the duty of Australians to be true to their trust, and though present signs at the battle front were hopeful, there was yet much need for continued activity on the part of the people of this Commonwealth. The war would not be over for some years, even after the last gun had been fired, for new economic conditions would arise in which Australia must be prepared to play its part, and a noble part, if they would make it worthy of the great name which had been written in the blood of its heroic sons. Wherever freedom was spoken of Australia was almost a name to conjure with, and there must remain, after the fight, a great part for its people to perform. Mr. Chanter went on to say that the promise made to the "boys" who first left Australia's shores had not been fulfilled, and to urge that the pledge then given should be observed. Next he condemned in strong terms the proposals for peace by what was called negotiations, and without indemnities or annexations, and showed how foolish it would be to entertain such ideas, and, nearing the conclusion of his address, Mr. Chanter congratulated the residents upon what they had done, in the planting of the avenue to the honour of men for whom it would be impossible to do enough. He hoped the trees in the avenue would live for many years, and that, as necessity arose, they would be renewed by future generations to the memory of those who had done so much to deserve it. He then cut the ribbon and declared the avenue open for all time.

Welcome to the Woodend Star Kids Club June Birthdays

1st	Rachel Mundell.....	Turns 6
1st	Joshua Mundell.....	Turns 6
5th	Sarah Paterson.....	Turns 11
5th	Michael J Chew.....	Turns 12
5th	Mitchell M Johnson.....	Turns 6
9th	Genevieve Brand.....	Turns 9
11th	Ellen McVeigh.....	Turns 12
14th	Dylan Scerri-Johnstone.....	Turns 4
19th	Connor Davidson.....	Turns 10
26th	Sian Saddington.....	Turns 10
28th	Laura Crozier.....	Turns 7

Happy Birthday Everyone!

**You can collect your birthday surprise
by visiting Collier Office & Business
Assist in the Woodend shopping centre
– but you must come in yourself!**

(PS: We need your jokes and pictures! Please drop them in.)

Walk together for health

Are you unhappy? Is your week long and lonely? Have you been told to incorporate more activity into your life for health and wellbeing? Have you been given walking as part of a life script from your GP? Would you like company when you walk? Would you feel safer walking with others? Do you fancy having a cuppa at the end?

Join *Macedon Ranges Walk Together* – Each group has a volunteer trained group leader.

Discover walking

Up to 30 minutes. This walk is a circuit that means you walk till tired, sit, catch your breath, start again or chat with the other walkers.

Designed for people of any age:

- Low level fitness
- Use walking aids
- Recovering from illnesses
- People with disabilities
- Just want to go slow.

You are not pushed to walk, but left to walk in your own time and at your own pace with in a social environment.

There are 2 types of Discover Walking Groups:

Indoor Circuit: A spacious room with facilities near by. Sheltered from the weather, flat walking surface. This circuit would suit people wanting to start with in a more supportive environment.

Outdoor Circuit: In Woodend and Romsey these circuits are at ovals where the pace can be brisk or leisurely. There is still support but it's outside, and the surface is not as flat.

For *Discover walks in Woodend* contact: Monday 9.00 am, Leesa – 5420 7458, outdoor circuit. For Tuesday 10.00 am, Helen – 5427 1891, indoor circuit.

Puff'n'Sweat

30-45 minutes. You do not have to puff and you do not have to sweat but this is the group for you if you want to stride out and cover some distance and may be a few hills.

This is fantastic if you have a partner, friend, mum, dad, that is faster or slower than you but you still want to get out and walk together.

The Woodend 9.00am on a Monday can also be used this way as it is an outside circuit.

For *Puff'n'Sweat* Walks in Woodend contact: Monday 9.00 am, Leesa – 5420 7458, circuit. For Tuesday 10.00 am, Mike – 5427 1547 or Hubert – 5427 3208. For Wednesday 10.00 am, contact Deann – 5424 8143 or Rosalie – 5427 4585.

Pram Plus

This is a social group for mums, dads, carers, bubs and pram toddlers. The emphasis is on social interaction and fun. The walks are designed to be talk pace and may have a few hills. Contact for Pram Plus walks in Woodend: Wednesday 11.00 am walk, Deborah 5427 3539.

Submitted by Jeannie Hartney, Macedon Ranges Walk Together Coordinator, 5427 1845

WOODEND HEALTH & FITNESS

- Wide range of equipment
- Group fitness classes available
- Teen's Gym sessions available
- Personal training available

Start your fitness campaign today

30 Wood Street, Woodend

Phone Brian on 5427 1181 or 0400 263 230

Mixed Over 30's Basketball OR Mixed Netball

The competition will take place on Tuesday nights starting in Term 3 (mid-late July).

We are looking for both individuals that would like to be put onto a team, or people that may already have a team together and ready to play.

If you could please register your interest with the Riddells Creek Leisure Centre via, phone 5428 7155 or email rclc@macedon-ranges.vic.gov.au

If you are interested, contact the centre as soon as possible. But remember to mention which competition you would be looking to play!

All news items, articles and community news columns must be received by 15th of each month.

Buffalo Sports Stadium – Woodend

Enrol NOW for these term 3 programs. Bookings are essential, phone 5427 3411 or

email buffalo@macedon-ranges.vic.gov.au

Junior Programs

- o Junior Basketball 6 – 17 years TBA
- o Junior Indoor Soccer 6 – 16 years TBA
- o Junior Netball Comp 7 – 18 years TBA
- o Tiny Tappers 3 – 10 years \$8 p/w
- o Tiny Tackers 2 – 10 years \$8 p/w
- o Hip Hop Classes 6 – 12 years \$8 p/w
- o Kindergym 6 mths – 6 yrs \$7 p/w
- o Occasional Care 0 – 6 years \$5 p/h
- o Carmel Amelia Dance 3 yrs – Adult TBA

Senior Programs

- o Daytime Ladies Basketball TBA
- o Ladies Netball Comp \$42 team p/w \$90 rego
- o Mixed Volleyball Comp \$40 team p/w \$90 rego
- o Scottish Dancing TBA
- o Table Tennis Competition TBA
- o Senior Basketball TBA
- o Mamma's Can Tap 2 \$8.00 p/w
- o Pilates Classes \$8.50 p/w
- o Aerobics Classes \$8.00 (\$6.50 conc.)