

# THE NEW WOODEND STAR



Circulation of 3050 throughout  
Woodend postal district, Newham, Hesket, Ashbourne,  
North Woodend, Hanging Rock, Carlsruhe, Cobaw.

**AN INITIATIVE OF THE ROTARY CLUB OF WOODEND**

May 08

A Monthly Community Periodical

First Publication 1997

Volume Twelve No. 4

## Woodend Winter Arts Festival June 6-9

*Something new for locals! World class entertainment on your door step.*

This year the WWAF is bigger and better than ever. This festival is for young and old – with Jazz, Peter and the Wolf, Japanese flute, and the very beginnings of opera. Not only do we have the talents of James Morrison and Riley Lee, but also Australia's most acclaimed baroque opera singers Sara Macliver, Sally Anne Russell and Paul McMahon.

There are also percussion, clarinet and piano recitals, and of course the wonderful Australian String Quartet returns.

WWAF's Literary events feature acclaimed writers and poets and there is also Pottery and Botanical Art.

But you must book via **Ticketmaster!** Phone 136 100 or visit a Ticketmaster outlet. Tickets are selling fast and won't be available at the door for James Morrison or for the Peter and the Wolf.

[www.woodendwinterartsfestival.org.au](http://www.woodendwinterartsfestival.org.au)

## Calling all pianists: all ages and abilities!

Once again the Woodend Winter Arts Festival is offering a piano marathon with an opportunity for young people and the young at heart to perform. This year's event is Schumann's Album for the Young, consisting of 40 pieces of various ability. All are welcome to register for the event by visiting [www.woodendwinterartsfestival.org.au](http://www.woodendwinterartsfestival.org.au).

The event will be staged at the Degraives Mill at Carlsruhe, just north of Woodend (before Kyneton) on Monday June 9th from 9.30 am. This is a free event for performers, families and audience. Each performer will receive a certificate of participation on the day, so it is important that you register as soon as possible. It's a great opportunity to put your skills and talents into practice in a friendly setting.



## Rod Quantock to replace Max Gillies at Festival

The sudden unavailability of Max Gillies in recent days for the performance of Peter and the Wolf on June 7th was a blow for the Woodend Winter Arts Festival. However, the Festival committee is excited to announce that comedian Rod Quantock will take on the role of narrator, and will no doubt entertain children and adults alike. While no organisation ever wants there to be problems with event planning, occasionally things happen, and it's always fantastic when another performer can step in and take over.

Tickets for the children's concert Peter and the Wolf, featuring Rod with the Scotch College Orchestra are just \$10 per person (any age) and each ticket includes free bus transport from Woodend to Braemar and back (no parking at Braemar). Visit [www.woodendwinterartsfestival.org.au](http://www.woodendwinterartsfestival.org.au) for more information.

## Botanical Bounties

Visitors to Woodend during the Queen's Birthday holiday weekend in June will again have the opportunity to enjoy an extensive exhibition of botanical art by a group of artists closely associated with the beautiful Macedon Ranges. As part of the Woodend Winter Arts Festival's visual arts program, Botanical Bounties draws inspiration from the abundance of seeds, fruits, nuts and pods to be found in the plant world and portrays these bounties in recent paintings, drawings and photographs. The exhibition is open daily from Saturday 7th – Monday 9th June.

The exhibiting artists include Margaret Castle, Dene Douglas, Jan Duigan, Annabell Gordon, Angela Langley, Steph Goss, Mathew Gordon and guest exhibitor Arnolda Beynon. Margaret Castle who has curated the exhibition is a well-known botanical artist whose passion for her subject extends beyond the studio. Her botanical paintings and drawings have been seen in both solo and group exhibitions and can be found in many private collections both in Australia and overseas. Jan Duigan, Annabell Gordon and Angela Langley all live in the Macedon Ranges and have successfully exhibited both locally and at the Royal Botanical Gardens, Melbourne. The paintings of talented local artist Steph Goss will be familiar to many in the Macedon Ranges as well as wider afield and this will be an opportunity to see her most recent work. Botanical Bounties will have a special guest exhibitor in Arnolda Beynon. Arnolda has come to Australia from the UK where she painted and exhibited as a member of the Florilegium Society at the Sheffield Botanical Gardens. She is delighting in using her skills as a botanical artist to explore the native flora of the Australian bush. Mathew Gordon's sensitive photographs round out the exhibition.

The delightful Old School House Gallery at the corner of Honour Avenue and Clarkes Lane just north of Woodend provides a wonderful venue for this exhibition. Open from 10am to 4pm on each day of the holiday weekend. Admission is free.

## FOR LEASE

**Upstairs Office Space for Rent**  
Approximately 60 square metres  
**Historic Piper Street**  
**in Kyneton**  
**\$165 per week**  
**Phone: 5427 3892 for information**

## Woodend Rainfall Report 2008

Each month we add the rainfall details and the year to date total. Our rainfall report shows 2004, 2005, 2006 and 2007 comparisons. Please note that your own rainfall readings may not exactly match these. These readings are the official BOM readings and have been taken in the same location in Woodend for many decades. All measurements are in millimetres.

	2004	2005	2006	2007	2008	
January	21.2	47.4	49.8	83.5	17.1	Jan
February	6.2	72.2	53.1	27.4	22.1	Feb
March	19.0	5.8	20.6	35.7	25.4	Mar
<b>YTD:</b>	<b>46.4</b>	<b>125.4</b>	<b>123.5</b>	<b>146.6</b>	<b>64.6</b>	<b>YTD</b>

**Reminder: We are now on Stage 3A water restrictions.**

For the year to date 31/03/08 there was rainfall of

**64.6 mm**

1 inch = 25.4 mm therefore the total year to date is 2.54 inches

## WOODEND Proud to be Pokie-free

### The New Woodend Star

An initiative of the Rotary Club of Woodend Inc.  
The Bank, 75 High Street, Woodend, Vic. 3442  
ABN 32 685 225 161 No. A0021518E

Layout & printing by Woodend Copy Centre

For people wishing to submit stories, articles, letters to the publication, simply place the information in the strategically placed drop-boxes. These are located at the Liquor Shop, Collier Office & Business Assist, The Bank @ 75 High Street and Woodend Newsagency.

**Circulation: 3050 copies throughout Woodend and district**

**Disclaimer: The opinions and views expressed by the contributors are theirs alone, and do not necessarily reflect the views and opinions of the Committee of Management, or the Rotary Club of Woodend.**

The Committee reserves the right to edit articles for length and clarity.

**Committee: Barry Naphine, Ivor Johnson, Claudia Green, Irene Hatcher, Joy Barker and Jane Watters.**

**Closing date for inclusion of articles for each issue is the 15th of the month prior to publication.**

#### Advertising available

For all bookings and artwork submission please contact Irene Hatcher 5427 3092.

Artwork to email [nws@collieroffice.com.au](mailto:nws@collieroffice.com.au)

This newsletter is supported by



#### ADVERTISERS PLEASE NOTE:

**Unless specific dates are given for inclusion – all advertisements will be placed and charged for until notified otherwise IN WRITING.**



**MACEDON RANGES  
FLORIST**  
Bring in this advertisement to receive  
**25% off**  
**your Mother's Day Flowers**  
**42b Anslow St, Woodend**  
**5427 2037**

## Woodend Senior Citizens

On Friday mornings at 10am we play carpet bowls, we play cards as always on Friday afternoons and on Tuesday afternoons we play Bingo from 1.30pm. All Seniors are welcome.

On the 20<sup>th</sup> May at 2pm we are holding a Blumes Fashion afternoon at the Woodend Community Centre. After the fashion show afternoon tea will be served. Entry fee will be \$2 and 50c a ticket for the competition. Come and enjoy the afternoon together. All welcome.

Submitted by Norma Richardson

*Happy Mother's Day*

## Advertising Rates for 2008

New advertising rates per month from 1/1/08

*All rates include GST & are priced per month.*

Business card size (per month) .....	\$38 inc GST
Eating Out (per month) .....	\$31 inc GST
Trade Page (per month) .....	\$25 inc GST
Quarter page (per month).....	\$85 inc GST
Half page (per month) .....	\$150 inc GST
Full page (per month).....	\$267 inc GST
Insert (of your printed brochure) .....	\$180 inc GST

*Advertisers: Please note – it is in your interest to book and pay for a year in advance, as a 10% discount applies to any full year pre-paid booking.*

*This now includes to Trade Page & Eating Out sections.*

*Any existing pre-paid ads will revert to the new rate on completion of the pre-paid period.*

### Information for advertisers

Any accounts queries can be made to Joy on 5427 4089 during office hours.

**Mail should be directed to: New Woodend Star, C/- The Bank, 75 High Street, Woodend 3442.**

Drop boxes for articles are at: The Bank (75 High Street), Woodend Newsagent, Collier Office & Business Assist and Marks' Liquor Shop.

Copies of the publication will also be available.

### Woodend Star Publication Dates for 2008

June	Delivery 2nd June
July	Delivery 30th June
August	Delivery 4th August
September	Delivery 1st September
October	Delivery 29th September
November	Delivery 27th October
Dec / Jan	Delivery 1st December

*Advertisers and contributors are reminded to book in by the 15th of the month with artwork to follow immediately. Changes to advertisements, new advertisements or cancellations should all be made by email or in writing.*



## New Members The Rotary Club of Woodend

Put something back into this great community and be part of a worldwide organisation that helps build goodwill and peace allowing ordinary people to achieve extraordinary things and bring about exceptional change in the world.

Contact Kai 5427 1029

## Anzac Day @ Mt Macedon

It is estimated that more than 3000 people attended the Dawn Service held on Anzac Day. Thankfully, the rain held off and though the morning was cold, those who attended once again commented on the moving tribute to those who served our country in all wars.

Each year the crowd seems to swell, and the number of young people in attendance is always growing. Participation included student leaders from Braemar and Gisborne Secondary, members of the Defence Force and their families and young people who brought their own wreaths and tributes to the service.

### SUBSCRIBE TO THE NEW WOODEND STAR

Do you live outside the *New Woodend Star* distribution area? be sure to receive your copy every month by subscribing. A yearly subscription of 11 issues is just \$27.50. Post to *New Woodend Star, C/- The Bank, 75 High Street, Woodend 3442.*

Name: \_\_\_\_\_  
Address: \_\_\_\_\_  
Phone: \_\_\_\_\_ Enclosed: Cheque/Money Order for \$27.50

Save your wardrobe.  
Save the world.



### New arrivals daily!

Quilted vests, light jackets, long leather boots, designer jeans, leather loafers.

42 Anslow St Woodend  
T 0414 524 423  
Hours Thurs/Fri 10-5 Sat 10-2

In front of Cafe Colenso next to the Florist.

## Woodend RSL: Write Off or Opportunity?

'A half million dollars asset doesn't look much like a "write off" to me', says RSL President Frank Donovan, to one recent sensational headline. 'On the contrary, the Woodend RSL stands on the threshold of a bright new future.'

As the RSL's operational review, started just before ANZAC Day last year, draws to a conclusion Dr Donovan says that the sub-branch is poised to make a firm choice between two pathways for the future. Two recent but independent structural engineers' reports have condemned the main roof structure, resulting in the sudden closure of the main hall for public use since the eve of the Easter week-end. There's little doubt that this has prompted the Committee to fast-track its decision making about the building.

Dr Donovan says the two pathways are these:

One pathway is to replace the main roof structure (trusses, cladding, ceiling and associated components eg electrical wiring, ventilation ducting etc.), make other essential internal and external repairs, and then renovate and refit the premise to bring it into line with current standards for licensed club facilities.

The other pathway is to demolish the existing building and re-develop the site to provide more appropriately for the present and future needs of the RSL, its members, veterans, dependents and the Woodend community. Options under consideration include a new, purpose built but smaller RSL club room and facilities, or a solo or joint venture to provide independent living units for aged veterans and other eligible aged residents, with an RSL and consulting rooms building incorporated in the project.

Which ever direction the sub-branch adopts, there will be a need for significant capital funds. A combination of proceeds from a proposed sub-division and sale of surplus portions of the present site, government grants and local fund-raising would be needed to fund a roof replacement, repair, renovation and refit. Similar funds would be needed to demolish and re-develop the site, although a joint venture with an aged care provider would replace funds raised from a subdivision with funds invested by a partner.

A special sub-branch meeting has been called for Monday 26th May at 7.00pm in a venue to be advised by mail to all members. Members will be asked to adopt by consensus one or the other of the two pathways outlined above.

## Concert for Peace

The Medical Association for the Prevention of War Victorian Branch, presents a piano recital by Dr Robert Schmidli, at Macedon Spa, 652 Black Forest Drive, Macedon on Saturday 24th May, 2 for 2.30pm. Mayor Noel Harvey will launch Macedon Ranges Shire Council's joining of **Mayors for Peace**.

The recital includes: Hummel: *Rondo in E flat major Op 11*; Bach: *Partita in C minor BWV 826*; Beethoven: *Sonata Op 109 in E major*; Liszt: *Venezia e Napoli*.

Tickets are \$40 and \$20 concession, from Frog Hollow Bookshop, Gisborne 5428 2566, or Jenny Grounds, Riddell Country Practice 0407 287 684

## Woodend Bowling Club

### Annual General Meeting 2008

This years AGM will be held on Sunday 25<sup>th</sup> May 2008 commencing at 2pm. Prior to this meeting and Extraordinary Meeting will be held at 1.30pm to discuss the progress and development of the proposed synthetic green. After that members will be requested to vote on the financing and continuation of the project.

Allan Crockford, President

## CASTLEMAINE—GISBORNE CLEANING SERVICE

CHRISTINE ADAMS, FRYERS ROAD, ELPHINSTONE 3448

**Carpet Cleaning Specialists  
Duct Cleaning, Window Cleaning, etc.**

**For all your cleaning requirements**

- no job too big or too small -  
*obligation-free quotes*

Tel: 5473 3307 Fax: 5473 3310

**Mobile: 0419 006 591**

## NORTH CENTRAL ACUPUNCTURE & CHINESE MEDICINE

仁  
心  
仁  
術

### Gina Pilven

BaHSc: Chinese Medicine

Acupuncturist

Chinese Herbalist

Health Rebates Apply\*

Westpac Bank Building  
11/75 High Street, Woodend



**0405 467 418**



## Macedon Ranges Equine Vets

### Macedon Ranges Equine Vets

- Full equine services including x-rays, ultrasound and endoscopy
- Stable and crush facilities
- Foal alarm rentals
- Foster mares available

**0400 449 990 03 5428 1888**

Lachlan Fleming



**CARPENTRY**

REGISTERED BUILDING PRACTITIONER

**0401 499 898**

EXTENSIONS RENOVATIONS  
ALTERATIONS

## Joanne Duncan

STATE MEMBER FOR MACEDON

MP

Friends,

At the heart of good governance is honesty & accountability, as well as an understanding of the issues confronting the whole of society.

If you have any concerns you wish to raise, please do so.

Feel free to call me on:

**5428 2138**



## Concessions and Rebates to help you keep warm this winter

### Dear Friends

With the winter months fast approaching, I thought you may be interested in a few concessions and rebates available to help you keep warm this winter.

A Winter Energy Concession is available between May 1st and October 31st for Pension Card, Health Care Card and three different types of Veterans' Affairs cardholders (All conditions, War Widow and TPI cardholders).

All you have to do is present your valid card when paying your energy bills at any Australia Post outlet, or notify your energy company when paying your bill over the telephone or via the internet.

If you use LPG, non-mains electricity or an alternative fuel such as heating oil, you also may be eligible for a Non-Mains Winter Energy Concession.

Pension Card, Health Care Card or Department of Veterans' Affairs Gold card holders are eligible for a rebate if you spend at least \$82 on LPG, oil or non-mains electricity between May 1st and October 31st.

And if you are having trouble paying your energy bills, please notify your energy provider who can let you know of the payment options available to you.

There are also many rebates available from Sustainability Victoria which will help you save money and energy.

A Solar Hot Water Rebate will be available from 1 July 2008 to help cover the costs of shifting from gas or electric hot water systems to solar hot water systems.

Solar energy is highly efficient and cheap to run over time. A rebate of up to \$2500 will be available to rural and regional Victorians.

If you are planning to renovate, you may be interested in the Insulation Rebate program. Ceiling insulation reduces the amount of heat lost, and can result in large savings on your annual heating bills.

Rebates are available through participating suppliers and installers of insulation. Conditions do apply, and a list of suppliers and installers is available from Sustainability Victoria.

If you would like more information about concessions, please telephone the Concessions Information Line on 1800 658 521. For rebates information, please telephone Sustainability Victoria on 1300 366 195, or telephone my office on 5428 2138.

Warm regards,

**JOANNE DUNCAN MP**

*State Member for Macedon*

# WOODEND SELF STORAGE



- Store your business documents, stocks or furniture
- 7 day access
- 33 individual sheds
- Affordable prices
- Insurance available

For any enquiries  
please contact  
**Leonie or Dennis Barker**  
on 5427 4175

**Woodend Visitor Information Centre**  
High Street Woodend  
**Ph 1800 244 711**



**Macedon Ranges**  
**Real Estate Specialists**  
**Open SEVEN Days**  
108 High Street, Woodend  
**Phone (03) 5427 2277**  
[www.connallys.com.au](http://www.connallys.com.au)

**ADVANCED**  
**EQUINE**  
**DENTISTRY**  
YOUR VETERINARY PROFESSIONAL

Dr Shannon Lee BVSc  
**0418 598 621**  
we care for YOU!

Mobile services for Macedon Ranges of Victoria  
[www.advancedequinedentistry.com.au](http://www.advancedequinedentistry.com.au)

## Woodend Primary School

*Woodend Primary School goes online for its own 20/20 summit*

It might not be bringing 1000 specially selected people onto the school grounds, but Woodend Primary School is aiming to gather the views of as many parents, future parents, community members and students of the school as it can.

Via special on-line survey, the School is assessing opinion and perceptions about the school in order to facilitate forward planning – for students, parents and the way the School works with the community.

In a turnaround for students, grade 3-6 children will also be asked to assess their school in a specially developed on-line survey. They will be given time during school hours to complete the survey.

'It's important we get the widest possible views', said school Principal Andy Kozak. 'We're always aiming to do better, but we needed to gather some real information about what parents thought about our programs, procedures and policies – and how we can continue to improve in a changing educational climate.'

'When we started to talk about it at the School Council, we thought; why not go broader than that? We live in a diverse community and what the community thinks of us is important too,' he explained.

Parents with young children are also encouraged to take part in the survey.

'We want to know what they think, what they need and expect from a school and how we can provide relevant information to pre-primary parents,' said Mr Kozak. 'We see this as a way to start consulting with parents and helping them decide what's best for their children's education down the track.'

Every adult who completes the confidential survey online will have the option of submitting their details to be in the draw for one of six bottles of wine or two dinner vouchers to the value of \$40 each at Schatzis in Woodend.

'There are effectively three surveys online. But you go to the same address and select which survey best fits you – whether you are a parent with a child or children at the school now, a parent of young children, or an interested member of the community. We hope we get a lot of people involved – the more people who respond the better the data and the more ideas we can work with,' Mr Kozak concluded.

To complete the survey go online to: <http://tinyurl.com/688r4b>

Anyone interested in completing the survey but needs online access can contact the school on 5427 2455, where a computer with online access can be provided.

Andy Kozak, Principal, Woodend Primary School, T 5427 2455

## St Mary's Anglican Church

St Mary's Anglican Church will be holding a Car Boot Sale on Saturday 31<sup>st</sup> May starting at 9am, in the grounds of St Mary's Anglican Church, Buckland Street, Woodend. Refreshments will be available (a sausage sizzle). Come along and buy. Proceeds to go to our building fund. \$10 per car, bookings essential.

Norma Richardson 5427 2315 or Sylvia Dalton 5427 4075

# "Gee Mum, you smell nice!"

We have so many great Mother's Day gift ideas. Why not spoil her with a selection from our beautiful Sohum range? It's made in Melbourne and smells divine. Start with one or build a set, from \$11.95 to \$39.95. Plus we have jewellery and pyjamas and lots more.



ZAP2037

Come on in and browse – you'll be inspired.

## ZAPPA-do

*Bed, Bath and You... and Baby too!*

Shop 3, 87 High Street, Woodend. Ph: 5427 1270

## News from the Woodend R.S.L. Women's Auxiliary

Following our Auxiliary Meeting on Saturday 5th April, our ladies agreed unanimously to continue working as an Auxiliary. Due to our Hall closure we will, for the time being, make other arrangements as to meeting places. We have had many offers of assistance to overcome this problem and would like to thank these persons for their offers and concern.

Our Tina is planning another Mystery Tour to be held in May, date to be fixed. Reg has offered to be our driver, so who knows where we will end up this time. Our last trip was very much enjoyed. A booking has been made for the 4th of July for the Cuckoo Restaurant in the Dandenongs – more on this later.

Helen, our fundraiser, is doing a great job. She has some brilliant ideas for fundraising. More on these in my next letter.

Please be assured that The Women's Auxiliary is definitely not folding contrary to all the suppositions and rumours around the town. We all intend to be supporting our R.S.L. for many more years to come. If there are any ladies out there (definitely no age limit), who would like to join our progressive group, please contact me on 5427 2225 or Margaret on 5427 1226. You would be most welcome.

Our 'sickies', Margaret W., Stella, Milda and Pam are all making good progress and hopefully now on the mend. Cheers girls.

Betty J. Barned, Vice President, R.S.L. Women's Auxiliary

## Kyneton Physiotherapy

ROBERT ROUSE

B. App. Sc. (Physio) Member A. Physio. Assoc.

### Move Well. Stay Well!

Registered for Comcare, TAC, W/Cover, Vet. Affairs  
NO REFERRAL NECESSARY

74 High St., (Corner New St.,) Kyneton

**20 years on High Street! 5422 2290**

## Thursday night choir

Thursday night choir begins in May at Woodend Community Centre cnr Forest and High Streets from 7.30 – 9.30pm, cost \$12.

You are warmly invited to join a new, mixed voice choir based in Woodend. The choir will sing a blend of soul and spiritual's, global folk and contemporary songs. The emphasis is on harmonies, rhythm, dynamics and having fun!

Having recently moved from Melbourne, Polly Christie is a conductor and singing leader who is excited to start a new local choir. The choir is open to all lovers of singing, especially those who have some previous experience.

Please contact Polly with any queries, pollychristie@bigpond.com or phone 5423 2848 / 0417 059 434.



**24 Seven Alarms Aust Pty Ltd**

- Alarms installed, Serviced and Monitored
- SPECIAL - 2 Sensor Alarm packages from \$900 + G.S.T
- Digital Video Surveillance
- Medical Alert Systems
- Access Control Systems PSBL: 732-083-90s

**1800 247 111/ 03 5427 4411**

**sales@24sevenalarms.com.au**

**Now Based in Woodend**

## Festival Broadcasts on ABC Classic FM

Extend your Woodend Winter Arts Festival experience by enjoying the broadcasts of the 2007 Festival concerts this June. A full listing of the concert broadcasts is available on [www.woodendwinterartsfestival.org.au](http://www.woodendwinterartsfestival.org.au).

Broadcasts commence on **Wednesday 4th June at 1.05 pm** and run for four Wednesdays at that same time. The full listing will also be printed in the June issue of the *New Woodend Star*.

Each year the ABC record the concerts from the Festival for future broadcasting, giving you the opportunity to hear a concert that you might have missed out on!

**Woodend Visitor Information Centre**  
**High Street Woodend**

**Ph 1800 244 711**

Kirsty Nuttall

**MACEDON RANGES  
PICTURE FRAMING SERVICE**

By appointment only  
Phone/Fax: 5427 3511  
Mobile: 0417 337 857

## The Italian Connection

Local language teacher and Romsey resident, Barry Nunn, has created a more satisfying approach to visiting Italy, designed to get the most out of the few precious weeks most of us have to travel.

The one thing many visitors to Italy's Tuscany region regret is the need to move on after just a few days. The world-famous beauty of the region weaves its own spell and makes it hard to leave. Conscious of this, Toscana Mia Tours of Romsey offers small group tours of Tuscany at a leisurely pace which cater for your special interests.

Tours are based in an authentic Tuscan village, San Quirico D'Orcia, in the World Heritage-listed, Val D'Orcia, close to Siena in central Tuscany.

Barry offers his personal knowledge of the area and its people, which allows his guests the opportunity to really relax and immerse themselves in the daily life of the village, meeting some of the local people and feeling at home without being swamped by other tourists or hustled about from place to place. Day tours to nearby hilltop towns and picnic lunches in the surrounding countryside of the Val D'Orcia and the Crete Senese reveal the stunning beauty of this special part of Tuscany.

## SELL YOUR CAR TODAY

Prestige ~ Family ~ Sports ~ 4X4

car connect direct

**0418 183 360**

Cash ~ Bank Chq ~ Finance Paid Out  
Email: [ccdirect@bigpond.net.au](mailto:ccdirect@bigpond.net.au)

LMCT - 10132W

Pamela Kell

### Remedial Massage Therapist, Level 1 Pilates Instructor

SSNT/AAMT, Workcover accredited  
Relaxation, Sports, Remedial Massage  
Manual and Lymphatic Drainage

By Appointment

22 Goode Street, Gisborne

**5428 1000 0408 093 098**

## TERRY'S GROUND CREW MOWING & MAINTENANCE

**0400 909 303**

**ENJOY YOUR PRECIOUS WEEKENDS**

**TERRY BARRETT**

**PO BOX 885 WOODEND VICTORIA 3442**

Accommodation is in a delightfully restored 18th century inn and during their stay in San Quirico, Barry's guests are indulged in some of Tuscany's best provincial restaurants.

A unique feature of these tours is the opportunity they provide to pursue a personal interest or hobby: it could be walking, painting, photography, or a desire to know more about wine, olive oil, Tuscan cooking. Barry knows where to take you and the right people to meet.

Bookings are currently being taken for private tours and painting and photography tours in September and October this year.

Barry is also keen to form an Italian conversation group in the local area for Italian speakers of intermediate and advanced level. This would be a friendly, informal, no-fee group for those wishing to keep up their Italian.

You can reach Barry on 5429 3311, contact Toscana Mia Tours at [www.toscanamiatours.com](http://www.toscanamiatours.com), or write to P.O. Box 186, Romsey 3434 for information about the tours and/or the conversation group.

## Woodend Neighbourhood Centre

We recently had a get together on the occasion of Dorothy Shadforth's retirement from the Committee of Management after many years service. Dot has been a member, volunteer and committee member of the Woodend Neighbourhood Centre for approx 18 years and has seen many coordinators and homes for the Centre over that time. She is still very involved with the Centre as a volunteer and class participant and we hope Dot continues to enjoy her time here.

Many of our classes continue this term – please ensure you book in to avoid missing out, and to ensure we can offer as many classes as possible. Have you looked through our brochure and not found anything you are interested in? Please let us know – so we can plan new opportunities for the community.

Coming up this month we have the following classes starting: Intro to Permaculture; Counselling Skills; Communicating with confidence; Introduction to Hospitality – includes food safety & Responsible Service of Alcohol; Level I & II First Aid; Picture Framing; Glass fusing; QuickBooks & MYOB training; Healthy Aging Program – recognise your full potential; Mandala Art Workshop

We have Internet access that can be used during school hours as well as photocopy and laminating facilities. We hire rooms for community group use too.

For further information or bookings call in and see us at 47 Forest St, ring 5427 1845 or visit our website [www.wnci.websyte.com.au](http://www.wnci.websyte.com.au)

Submitted by Sarah Campbell, Coordinator

## Landcare News

### *Platypus seen near Woodend!*

Over the years there have been many sightings and reports of platypus in the Five Mile Creek. Very recently there has been yet another report by reliable witnesses. This is rather a thrill for us and for all Woodenders!

We can't say exactly where, because we don't want foolish or careless people to endanger it, and also because platypus can range over quite long distances.

Obviously our work on clearing and revegetating the Creek banks has begun to pay dividends, because there has also been an echidna visiting the planting site.

We're getting in touch with platypus experts to ask advice about habitat and suitable protection, and we are planning to conduct an information forum in conjunction with our Annual General meeting in July. Set aside the afternoon of Saturday July 19th for this event.

In the meantime – PLEASE! PLEASE! PLEASE! KEEP YOUR DOGS ON LEADS WHEN YOU ARE WALKING THEM ALONG THE CREEK TRACK. DO NOT LET THEM CHASE WILD ANIMALS OF ANY SORT!

Our regular working bees will continue on the fourth Sunday of each month, mainly involving weeding and caring for the previous plantings. We will also be looking for additional grants to help fund further work in revegetating.

Will we see you there on Sunday May 25th?

Submitted by Jo Clancy

## Rotary Ladies Luncheon A Success

The Rotary Club of Woodend held a successful Ladies Luncheon on Friday afternoon April 11. Thanks must go to everyone who helped by providing food, Leisa Macartney for the fantastic setting and the local community who turned out for the event. Many local people and businesses supported the event by donating gifts for the raffle including; Lifes Sweet, Blue Orange Concept, Maloa House, Color Me Cooper, Hair Blues, Christine McTaggart, Bundle of Bears, Arkitura, Sharon Frantz, Rhonda Hill and Macedon Pet Grooming. Woodend Rotary President Grant Hocking thanked all those who helped to make the day a great success.

Funds raised will allow for the purchase of the Boardmaker program and also a colour computer for the Woodend Library. Boardmaker is an incredibly flexible and powerful communication display maker and learning tool containing over 4,500 picture symbols to assist children with learning difficulties. This was a great community effort and the program will be available for all community members including day care staff, kindergartens and schools.

The bulk of the thanks should go to Melissa Hocking who arranged the event coordinating all the catering, ticket sales, raffles and venue. Everyone commented on what a great day they had and were very supportive of the cause.

For information on Rotary Projects or membership please contact Grant (54271578), Kai (54271029) or Miranda (0431 067 347) or go online to [www.myspace.com/woodendrotary](http://www.myspace.com/woodendrotary).

Pictured from left are Rhonda Hill, Leisa Macartney, Melissa Hocking and Kerry Bull.



# Contemporary Christian

*Cafe Nights*  
includes a variety  
of nice meals &  
Coffee

*Starts at 6pm*  
Woodend  
Community Hall

*Sunday May 25*



## Living Word

### Guest Artist

James A Peden is not quite the average solo artist, from the first beat and vocal line you will be captured by the high energy and emotion he brings to his music.

This Melbourne based, New Zealand born artist, brings you a mixture of Modern Acoustic, Electro Rock and Worship, with an intelligent blending of the sounds of the 80s, pop rock, funk and guitar/keyboard driven rock.

*Living Word meet every Sunday Evening at 6 for a Contemporary Christian Church service*

## Chiropractor – Mark Brown

- Mark has been practising for the last 6 years in at the Westpac Bank Building, 75 High Street.
- Mark's approach involves massage and stretching of muscles and ligaments before manipulation to provide best results.
- When appropriate, Mark can advise you on exercises to both stretch and strengthen muscles that support the spine.
- Mark has successfully treated problems including shoulder, elbow, wrist, knee and foot.
- Chiropractic can assist in a large range of problems including headaches/migraines, asthma, chronic digestive problems and certain types of neuralgia.

**Phone 5427 1456 or 0407 526 403**

# Woodend Rotary Shelter Box Response Team Training –

## *at the forefront of humanitarian aid*

The weekend of the 29th & 30th March saw members and friends of the Woodend Rotary Club attending the 2 day inaugural meeting of Rotary Shelter Box representatives from all over Australia in Melbourne.

Shelter boxes are an initiative from one man with a big idea which has gone worldwide and which has provided shelter & disaster relief to over 500,000 people world wide since 2001 – a truly awe inspiring achievement. But that's what Rotary does – awe inspiring achievements by ordinary men & women worldwide.

His name is Tom Henderson from the Rotary Club of Helston, Cornwall, who one night while watching television was appalled at the lack of dignity portrayed by visions of aid food being thrown to disaster victims from the back of a truck. Tom set out to do something about it and has achieved in just 7 short years what no other aid agency – government or NGO's could achieve. He developed a "shelter box". Each of which contains a purpose designed & manufactured tent, sleeping bags, cooking materials, a multi fuel stove, water purification aids and many other items necessary for survival in the immediate aftermath of a disaster for up to 10 people. Tom has also developed a box which contains enough school material to supply a village for a whole year. This was designed to bring "normalcy" to children affected by disaster.

Tom Henderson was present for the 2 day conference where Australian Rotary Shelter Box representatives explored ways of developing, marketing & fundraising for more shelter boxes. Each shelter box costs \$A1200 which is tax deductible. The destination of each shelter box is supplied to each box donor. Most Rotary clubs aim to fund at least one box per club per year, however & surprisingly, most boxes are funded by non Rotary individuals & corporations – a trend which is increasing. Just imagine - \$1200 buying the survival needs for 10 people when they have absolutely nothing. The Woodend Rotary Club has purchased 2 Shelter Boxes in 12 months as a result of raffles with prizes provided by the generous support of Woodend traders.

Another aspect of the shelter boxes is that trained volunteers are required to go with the boxes to ensure that they arrive and are distributed to those in need.. These volunteers are referred to as Shelter Box Response Team Members or SRT members for short. Mostly, SRT members are the first disaster aid provider on the ground – often within 1–2 days of a disaster.

Imagine arriving in a disaster area well before other aid agencies can be mobilized and mostly with all infrastructures completely gone and trying to distribute shelter boxes in the worst physical conditions and the worst humanitarian situations imaginable?

Picture arriving the day after the Boxing Day tsunamis? No clean water, no food, no shelter? But that is what an SRT Volunteer has to do. Each box weighs 51 Kgs.

The SRT volunteer has to negotiate not only the physical hazards but local politics, bureaucracy, transport logistics and competing interests.

Not everyone that applies to be a SRT Volunteers is selected. The selection process is onerous because so many people are totally reliant on your initiatives & resourcefulness – you cannot call for help – you are the person on the ground and you have to make the decisions. SRT volunteers after an initial assessment and training in Australia are then nominated to attend a 9 day training course in the UK. Only after passing this rigorous course do you get to wear the blue SRT shirt. It costs \$20,000 to train one SRT volunteer. These funds are provided totally separate to donors who sponsor boxes.

In Australia we currently have only 5 SRT volunteers and Shelter Box is looking to train 50 volunteers. You don't have to be in Rotary to be an SRT volunteer but you do need to be reasonably fit and have the appropriate "life skills".

Woodend Rotarians Eb Friedrich & Charles Bender and Friend of Rotary, Steve Muscat have applied to be SRT Volunteers and are beginning their assessments. They hope to make the grade as SRT volunteers and to head to the UK for further training. If successful, the Woodend Rotary Club will have the greatest representation of SRT members of any Rotary Club in Australia.

If you feel that you have what it takes to be an SRT member, or you just wish to be part of the 1.2 million Rotary family or you wish to donate towards a shelter box, contact Eb Friedrich on 0438 537 139.

### ***Postscript***

Eb Friedrich and Charles Bender attended an exhausting & challenging weekend training camp together with 6 other applicants from around Australia for selection as Shelter Box Response Team (SRT) Members. Whilst Charles decided to defer for a year or 2, Eb was selected with only 1 other, to attend the 9 day training course in Helston, Cornwall, UK in June. This is another "coup" for the Woodend Rotary Club which has been building itself up with new members and a very exciting & ambitious list of projects. To train an SRT volunteer costs \$20,000 which is funded from "UK gift recipient tax credits", which is similar to the tax deductions claimed here for charitable donations, but paid directly to the charity rather than the individual making the donation. 90 cents of every dollar that goes to a shelter box, goes to the supply of the box & its humanitarian survival contents. The other 10 cents in the dollar goes to the organisation & delivery costs of the boxes to disaster areas.

Disasters are so frequent, though often not "newsworthy" that there is invariably an SRT team deployed somewhere in the world at any one time. The shelterbox organisation plans also to run a "Shelter Box Challenge" in Australia, which has been successful in the UK. The idea is that sponsored teams have to take the box & its contents over a challenging course & obstacles, symbolising what SRT volunteers need to do to get boxes to disaster victims around the globe. We are hoping that the Woodend Rotary Club members & the community may consider supporting an inaugural event locally. The president of the ShelterBox Trust is the Duchess of Cornwall who was so inspired by the project, that she invited the UK Shelter Box Challengers to dinner at St James Palace.

Woodend Rotary is going places - new members are required to be inspired & come along for the ride. More information about shelterboxes is available from; [www.shelterbox.org.au](http://www.shelterbox.org.au)

Submitted by Eb Friedrich



## Change to Wildlife Emergency Phone Number

*Effective immediately*

As of Monday 21st April 2008, Wildlife Victoria's Emergency Phone Number has changed to 1300 094 535.

This is due to the closure of Telstra's 0500 service, which means that the old number has been completely shut down – there is no diversion facility or recorded message.

Wildlife Victoria's emergency number receives in excess of 20,000 calls per year for assistance with wildlife. The service is supported by volunteer telephone operators, and wildlife rescuers 24 hours a day 7 days a week.

So please put the new number in your phone and delete the old 0500 number:

1300 094 535 (13-000-WILDLIFE)

Submitted by Macedon Ranges Wildlife Network



*Let Habitat help make your house a home*



102 High St  
Woodend  
Ph 5427 2100

65 Main St East  
Ballarat  
Ph 5333 5525

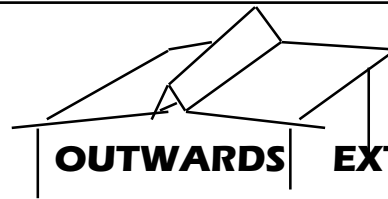
**Furniture & Homewares**  
**Open 7 Days**

“ a few good  
**WORDS** ”

Editorials, Publicity, Advertising, Proof-reading, Letters.

Nadine Hartnett  
Freelance Writer

0439 399 838  
nhartnet@bigpond.net.au



**OUTWARDS EXTENSIONS**

### STEEL FRAMED STRUCTURES

- CARPORTS
- PERGOLAS
- VERANDAHS
- DECKINGS

### FENCING

- WOVEN WIRE
- TUBULAR
- COLOURBOND

### GARDEN/OUTBACK SHEDS

### ULTRAPANEL CONSTRUCTIONS

### ALL CUSTOM BUILT TO YOUR DESIGN, SIZE & REQUIREMENTS



MCKIBBIN CARPENTRY  
HOUSING  
GENERAL BUILDING  
CONSTRUCTION WORKS

ROSS

0418 364 125

03 5427 2849

## 1st Woodend Scout Group

Over the Easter school holidays 13 cubs and 1 leader attended Cuboree, a statewide, 4-day, action packed camp for 7-11 year old Cubs. It was held at Gilwell Park, Gembrook and the cubs had an “awesome” time meeting other cubs, trying new activities, sleeping in tents and being entertained by a fantastic group of leaders.

The cubs tried activities such as a commando style course, water bombing their leaders, made balls on string, slaying a dragon with green water bombs, discovered what lives behind fridges, launched water rockets, balanced things, went over, under and through things, walked a lot and then walked some more. We sang lots, chattered more, slept a little, survived the storms and had such fun. We

came home tired and dirty but would love to go again – leaders need a rest first ...

Submitted by Sarah Campbell



*Woodend Cub Tess was one of the group who went to Cuboree in April.*

## Alexander Technique

Reduce, manage or eliminate **stress headaches, muscle and joint pain**. The Alexander Technique addresses the underlying problems and puts you back into control for yourself.

**Margaret McGill** has been teaching **Alexander Technique** for more than 20 years.

Contact **Margaret** on **5428 6461** for further information.

## Macedon Ranges Visitor Information Centres

### March 2008 – Local Learning Tour

Kyneton Country Cottage was our first stop on a Kyneton and Surrounds morning. This 'country cottage with style' in Maxwell Street can accommodate small groups to a maximum of six people. It has hydronic heating throughout and a pleasant back garden with room for games. It is near the shops and adjacent to the Botanic Gardens. Zola and Howard Maylor also own Tilwinda and the same attention to detail and quality fixtures and fittings are evident throughout this charming self contained B&B.

**Highbank at Lauriston** was a delightful surprise. Tonia Todman, the well known Television and Radio presenter, was "at Home at Highbank" to explain her range of home-arts courses: 'Cooking with regional produce', 'Interior decorating with style', 'Craft with passion', and 'Gardening with the seasons'. Highbank was first built in 1850 in bluestone, and then later extended in timber. It is currently under careful restoration. "There is nothing quite like this in Australia" says Tonia who will target small, special interest groups providing individual tuition, visiting experts and a historic homestead as a backdrop for her classes featuring a return to old fashioned values. A very impressive and inviting offering and a welcome addition to the services available in the Macedon Ranges.

**Macedon Ranges Interiors and Apartments 61A** – another unique retail outlet in the heart of Piper Street. Interior and exterior decoration consulting and advice is offered (furniture, antiques, fabrics, home wares etc) in this recently established shop in an original 1870s premises. Above the shop is a beautifully appointed self-contained two bedroom apartment available for short term and weekend accommodation.

**Wyoming B&B**; by the Botanic Gardens at 17 Mollison Street, is a charming in-house B&B featuring two queen sized en-suited bedrooms and a quiet and peaceful communal lounge area. Both bedrooms are private enough to be booked by separate couples or the entire house can be used by small groups of up to six people. (There is an additional adjoining bedroom to one of the suites which shares the bathroom to the main bedroom) Suzanne Odgen is to be congratulated on the 'old world charm' of this relaxing retreat The French doors of the private breakfast room that open out to an ancient Quince tree laden with fruit in the secluded garden are a delightful feature of this gracious establishment.

**Kyneton Bowling Club** generously hosted us to a luncheon in their newly opened main dining room. Work is nearing completion throughout the complex. Their restaurant "Junction on the Green" is open Lunch: Tuesday – Sunday 12

## CHINKA STEEL CONVEYANCING FOR ALL YOUR PROPERTY SALES AND PURCHASES

**RING CHINKA ON  
03 5427 2477**

**74 HIGH STREET WOODEND 3442**

## WARNER'S JEWELLERS

EST. 1912 ~ 4th Generation Jewellers

**97 High Street, Woodend 3442**

**Tel: 5427 1573**

**Manufacturing Jewellers and  
Diamond Ring Makers**

Stocking: Portmeirion, Whitehall,  
Queens, Pimpernel, Royal Doulton,  
Cherished Teddies, Royal Sengalor.

## The MORTGAGE GALLERY

### Access to over 30 Lenders!

Home Loans  
Car Loans  
Personal Loans  
Equipment Finance

**Matthew Roulston**  
**0403 955 907**

Ph: (03) 5422 1633 Fax: (03) 5422 1644  
mattroulston@themortgagegallery.com.au



Matthew is a professionally trained Finance Manager with over 10 years in the Finance Industry.

In this time Matthew has assisted hundreds of clients find the right financial solution for their needs.

With access to over 30 lenders including all the major banks, he is sure to find the right loan for you.

*The Real Advantage*

– 2pm and Dinner Monday – Thursday: 6pm – 8.30 pm and Friday/ Saturday 6pm – 9pm. The Club is to be congratulated on the quality of service it provides to the public and to groups.

Our thanks to Nigel Heyward for his report on the February Local Learning Tour

# Eating Out, In & Around Woodend

## Lancefield & Romsey Winemakers cellar doors open 24 & 25 May

Woodend is privileged to be in the centre of Australia's finest truly cool climate wine region. Those of us who live here know how really "cool" it can get. Stretching from Daylesford in the west to Mt William in the east, the Macedon Ranges wine region includes some of the country's coolest, and highest, vineyards and produces the finest, complex and most delicate wines. The highest concentration of these vineyards is in the east around Lancefield and Romsey – and that is where the action will be in the weekend of May 24 and 25.

On that weekend eight of them will relax a bit and let their hair down at the Winemakers of Lancefield and Romsey's 2008 Vintage Showcase. Come along, you're all invited (and you can go to the Lancefield Farmer's Market as well). There will be dinners featuring their wines at Soltan Pepper in Romsey during the week. Then at the weekend there will be hospitality to be had at the cellar doors, several of which are opening for this special occasion. If you are coming from Woodend, you can start at Midhill on the Romsey Road, or at Braewattie and Curly Flat at Rochford on the Lancefield Road. Then on to Lancefield to Farrawall and Morganfield and out to Mt William to visit Portree, Lane's End and Mt William Winery. You will find Gold Medal and Trophy winning wines at all of them, and yes, they did take off 8 of the 9 Trophies awarded at last year's Macedon Ranges Wine Exhibition.

They truly are a "Limited Edition".

### Not Just Fudge

126 High Street, Woodend

Home-made Fudge, Natural Ice Cream, Coffee, Tea, Herbal Tea, Milk & Thick Shakes, Cakes, Sandwiches, Freshly Squeezed Fruit & Vegetable Juices

Ph: 5427 2210  
Fax: 5427 2880

### KYNETON BOWLING CLUB

Newly opened – our beautiful dining room lends itself to all celebrations. Our Chef prepares wonderful culinary delights using superb fresh produce.



Lunch: Tues - Sun 12pm - 2pm  
Dinner: Mon-Thurs 6pm-8.30pm, Fri & Sat 6pm-9pm  
Bookings essential  
**Phone: 5422 1902**  
**Pot 'n Parma night every Tuesday for only \$12.50!**  
(or a glass of house wine)  
Mollison St, Kyneton



Frank & Rose Gorlitz

Open 7 Days  
8am till late  
breakfast, lunch & dinner

For Bookings  
Ph/Fax 5427 4447  
Mobile 0403 423 537  
"Where Lovers of Food Eat"

\* FAB FOOD  
\* FUNCTIONS & CATERING  
BY ARRANGEMENT  
Bookings Essential  
BYO wine only  
Light Snacks Mondays  
Free entry for Macedon Ranges residents

**Tel: 5427 0295**  
Large range of Australiana Gifts

### Hanging Rock Café & Country House



### Cafe Colenso

Fabulous coffee  
Breakfast-brunch-lunch  
Freshly baked cakes and bread  
Fully Licensed & BYO

**Now open Wednesday to Sunday 8.30 – 4.30**

**42 Anslow St, Woodend Phone 5427 2007**



## The Bentinck of Woodend

CONFERENCE – WEDDING – RESTAURANT

**RESTAURANT NOW OPEN**

**Dinner**  
Thurs – Sat from 6.30pm

**Sunday**  
Breakfast from 8 am  
Lunch from 12 pm  
Afternoon Indulgences from 3pm

**The Bentinck**  
8 Carlisle Street WOODEND VIC  
**Ph: 5427 2944**

**Book Now for a unique dining experience**



### MOUNT MACEDON WINERY

*happy mother's day*

winter opening hours: Wed-Fri 12-4, weekends 11-5  
433 Bawden (Douglas) Road, Woodend / Mt Macedon  
[www.mountmacedonwinery.com.au](http://www.mountmacedonwinery.com.au)  
**5427 2735**

## GISBORNE PEAK WINES



Short Road, Gisborne South

**Wonderful wines & wood-fired pizzas**

Casual, fun & friendly. All weather venue

**Tel 5428 2228**  
[www.gisbornepeakwines.com.au](http://www.gisbornepeakwines.com.au)



**WOODEND**

### **Bistro**

Open 7 days lunch & dinner  
Daily blackboard specials  
Macedon Region wines, open fires.

### **Bar**

Counter meals daily  
Fridays tradesman's lunch — \$10 pot & parma  
Match your wit against "Barry"  
Digital video jukebox on plasma screen

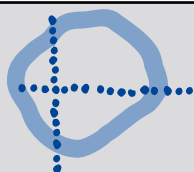
### **Function Room**

Available 7 days  
Private parties, meetings & celebrations  
Seated dining for up to 80 guests  
Private bar, open fire  
Balcony views of Mt Macedon

**Bookings 5427 2721**

67 High Street, Woodend

[www.vicwoodend.com.au](http://www.vicwoodend.com.au)



**Kyneton Ridge Estate**

MACEDON RANGES

**Open Weekends**  
tastings • pizza • coffee

Wine crafted with pride.

**Cellar Door**  
*Open Saturday, Sunday and  
Public Holidays 10 am to 6 pm*  
Wine tastings  
Delicious pizza  
& coffee

Phone: 5422 7377  
Kyneton Ridge Estate  
517 Blackhill Road, Kyneton  
*enter via Halloran's Lane*  
[www.kynetonridge.com.au](http://www.kynetonridge.com.au)

### **HOLGATE'S BAR & RESTAURANT**

Microbrewery Hotel with cosy  
open fires, stained glass windows  
and friendly atmosphere. Award  
winning local beer. Delicious  
meals including house-made bread, pasta and desserts.  
Function room and stylish accommodation now available.  
Open for Lunch Tues-Sun. Open for Dinner 7 Days  
**79 High Street, Woodend**  
**Ph 03 5427 2510**



### **"Magnificent" Art MAD Gallery & Café**

19 High Street, Lancefield

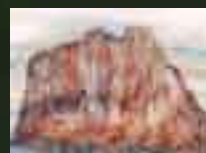
Tel: 5429 1432

Web: [www.madgallery.com.au](http://www.madgallery.com.au)

Open everyday 10am – 5pm

We're proud of our coffee and promise you  
the best coffee around, or your money back!

12 April: Frencham Smith live folk duo 7pm, \$20



*Rock View Homestead*  
**Receptions & Functions**  
**Ph: 5427 2076**

*Restaurant, Roasts & Local Wines*  
**Sunday lunches available pre-booking only**  
**On Mt Macedon Rd, between Braemar College  
& Straws Lane**

**5427 2076**

**All news items, articles and community  
news columns must be received by 15th  
of each month.**

**WOODEND**  
**Proud to be Pokie-free**

# Bradley's

## Curtains + Blinds

New showroom now open  
Mon to Fri 9 - 5.30 + Sat 10 - 1



t 5427 2361 fx 5427 1019 72 High Street, Woodend VIC 3442

www.bradleyscurtains.com

All news items, articles and community news columns must be received by 15th of each month.

## Your Memories to DVD

- \* 8 mm/16 mm Films
- \* Compact VHS
- \* Mini DV
- \* VHS

Discount for Quantity



Top Hat Productions  
Ph: 5422 3930



## WOODEND & DISTRICT PODIATRY

**John F. Shapland**  
Resident Practitioner

Reg. Department Veteran's Affairs

**5427 2064**  
Business and After Hours

1895 Mt. Macedon Rd., Woodend

## WOODEND

### NURSERY &

### GARDEN SUPPLIES

OPEN 7 DAYS

"LOCAL KNOWLEDGE FOR LOCAL CONDITIONS"

36 URQUHART ST, WOODEND

Tel: 5427 1866 Mobile: 0428 271 866

Full range of garden & landscape needs

Rock, Soil, Sands, Sleepers

Bobcat hire

## From your local councillor

### *Our local wineries are not in the picture*

The Macedon Ranges winery district has been left off a key map which shows the premier wine-growing areas of Australia – and we're not happy about it!

The National Wine Centre of Australia has a major display of the wine districts at its Adelaide centre, and the large table-sized map of Australia has left a blank where we should be.

I was recently part of a delegation with Portree Vineyard owner Ken Murchison showing a group of Chinese wine industry investors around some key wine areas.

Our study tour included wineries around Nagambie, the Yarra Valley, across to the Barossa and down to Tasmania to see wineries in the Tamar Valley District.

It was after visiting the Barossa that we called in to the National Wine Centre of Australia, which is now part of the University of Adelaide.

If the National Wine Centre puts itself forward as an organisation that promotes Australian wines and winegrowing, it's not acceptable that one of Victoria's premier wine-growing areas has been left off its map of wine districts of Australia.

I noted that it lists Sunbury, Daylesford and Seymour as among its 65 wine districts of Australia – but in my view the quality coming from these areas is not a patch on some of the award-winning vineyards and labels we have in the Macedon Ranges region, including Hanging Rock, Granite Hills, Portree, Curly Flat, Glen Erin, Kilchurn and such.

I've asked the Council to write on behalf of our community to the National Wine Centre, and get it to put Macedon Ranges on the map as a matter of utmost urgency.

It was an insult and embarrassment to us to show our study group this national map without the Macedon Ranges listed on it, when we all know that we are one of the premier districts turning out a wonderful range of fine wines and should be up near the top of the list of 65.

How many other people are visiting this centre and coming away without knowing that some of the finest wines of Australia are being produced right here in the Macedon Ranges?

### ***Push to expand local community radio***

Kyneton's very own community radio, 3CH Kyneton, could soon be picked up loud and clear out across the Eastern Ward.

The Australian Communications & Media Authority is proposing to extend the licence area of 3CH to service our communities and the whole Macedon Ranges Shire. It present it broadcasts to a very localised area.

The ACMA is proposing to move the transmitter to a new site at Mount Macedon and extend the licence area to encompass the entire Shire.

Henry Bleeck, Your Local Macedon Ranges Shire Councillor, 5422 7027

# BGE

## Joinery Quality you deserve

• Kitchens • Shop fittings • Bars

### BRAD ELSE

Mob: 0412 355 548 Ph: 5422 2517

Factory 2/27 Redesdale Rd., Kyneton

Visit our Showroom 166B Mollison St, Kyneton

11am - 5pm Fridays or by appointment

## Direct Seeding and Land Management Field Day

Interested in revegetation, but unsure which trees and shrubs to plant, how to control your weeds, and which revegetation techniques to use? This informative and interactive field day will address these questions and many more. Learn about native species selection, how to prepare your site and control weeds, where to get native seed and how to treat native seed for revegetation projects, hear about the advantages of direct seeding and see direct seeding machines and hand seeding techniques in action.

PLEASE REGISTER BY TUESDAY 20TH MAY TO SECURE YOUR PLACE

9.30am - 3.00pm Tuesday 27 May, 2008

411 Coliban Park Stud (Shearers quarters)

Coliban Park Road, Sutton Grange

Free - morning tea and lunch provided

To register or for further information:

Martin Hamilton (DPI) P: (03) 5430 4802 / 0429 946

149, martin.hamilton@dpi.vic.gov.au

or Nicole Bullen (Greening Australia) P: (03) 5430 4621

E: nbullen@gavic.org.au

## Woodend Winter Arts Festival brochure available

A 24-page full colour booklet is available, detailing all the activities, concerts and events for this year's Woodend Winter Arts Festival. You'll see the brochures in local cafes and shops, or they can be collected from the Visitor Information Centre.

For detailed and up-to-date information about the Festival, visit [www.woodendwinterartsfestival.org.au](http://www.woodendwinterartsfestival.org.au) and also check the Midland Express in coming weeks for greater information on many of the performers.

## It's All Happening at Gisborne Peak Winery

A whole year of fun things to do with wine is on the cards at Gisborne Peak Winery. Their new 2008 Calendar of Events is packed with interesting events. It all seems to revolve around food, wine & music, so there should be no complaints from their loyal customers.

Events include 'Hot Jazz, Cool Wines' and will be held in the new cellar door fireside room. Sunday afternoons of jazz in the cold month of July makes Gisborne Peak very 'warm in winter'.

The release of their first sparkling pinot noir means meals to match. This is to prove just how versatile a wine sparkling Pinot can be and how well it matches with certain foods. Check out the month of June on their 2008 event schedule.

But it's not all fun either. Education and explanation is all part of the learning curve at Gisborne Peak. Bob Nixon was once a teacher and will always love teaching. His passion for his vineyard is evident in any wine tasting that Bob conducts and you will be delighted with stories and anecdotes as Bob leads two vertical tasting sessions. One is planned for May (Pinot Noir) and one for August (Chardonnay). These tastings will start with the young vintages and venture back to the 1995 vintages. Bookings are required.

The upcoming 'Fireside Chats' feature people who are interesting. Simple as that. They might be an author, a poet, a chef or a balladeer. Sit back with a glass of estate grown wine and hear their tales. A cosy, informal and fun way to spend a Sunday afternoon. Check out the schedule of Fireside Chats on the website.

Every weekend wood-fired pizzas are served and the loyalty factor proves that they must be good! The menu at Gisborne Peak Winery is small, but delicious. The focus at Gisborne Peak is on the wine, with food playing a supporting role. No white tablecloths here, no silver service, or even table service! The end result is ideal - casual, friendly and relatively inexpensive.

The views? Overlooking the small lake, surrounded by vines, not much more to say.

Visit the winery, visit the website and have a look at the Calendar of Events 2008 for all the details. Location? Only 35 minutes out of Melbourne. Seems impossible. Try the impossible, you'll be amazed.

Gisborne South, off the Calder Highway, is just 35 minutes from Melbourne. Exit Gisborne South off the Calder Highway, follow the signs. Open 7 days a week, serving Taster's Platters daily and wood-fired pizzas on weekends and public holidays. Phone: 5428 2228, or visit [www.gisbornpeakwines.com.au](http://www.gisbornpeakwines.com.au)

## WOODEND TAXIS

### ☎ 5427 2641

- Taxi Passengers
- Verbal Message Delivery
- Airport & Melbourne Service
- Also Pickup & Delivery of Letters & Very Small Parcels

Betty Valli

29 Urquhart Street, Woodend

## WOODEND HEALTH & FITNESS

- Wide range of equipment
- Group fitness classes available
- Teen's Gym sessions available
- Personal training available

Start your fitness campaign today

30 Wood Street, Woodend

Phone Brian on 5427 1181 or 0400 263 230

## What is Playgroup?

Playgroup provides a regular meeting place for our communities babies to 5 year olds and their parents. Members meet in groups with children the same age at the playgroup located in Forest Street Woodend.

The Woodend Playgroup operates Monday to Friday and offers 3 sessions each day: 9am-11am, 11am-1pm, 1pm-3pm. For enquires about enrolling call 5427 2583.

Our AGM was held recently, with a new committee being elected for 2008

President: Josie McLeish

Secretary: Heather Steele

Treasurer: Karlana Williamson

Enrolments: Lisa Larter

We greatly appreciate the work of past committee and the continuing support of many local businesses.

We would also like to acknowledge and thank Kate McCormick Former Maternal Health Nurse at Woodend whose continued support of Playgroup and of many families in Woodend has been greatly appreciated. She will be missed by many families she has helped during her time at Woodend and we wish her well in the future.

**EpiGenetics**

*Healthy & Ageless Naturally!*

### Mother's Day Celebrations

### Gifts Galore!

### Gift Vouchers & Gift Baskets

### ½ Price MASSAGE Voucher with every Gift

Shop 8/81 High St Woodend

**Ph: 1300 737 146**

## Mothers' Day Eve Concert

Most mums have got enough slippers and coffee mugs, so this year, give mum a wonderful treat on the eve of Mothers' Day. The Gisborne Singers and the Ranges Players are presenting a delightful musical event which mums, dads and the whole family are sure to enjoy. The concert is on the Saturday evening before Mothers' Day.

The musicians will present a varied programme of choral and instrumental favourites ranging from folk songs to well known opera choruses and lots in between. The Gisborne Singers have a well earned reputation for presenting magnificent harmonies. They are delighted to be joined for the first time by the Ranges Players, a recent amalgamation of some of the region's most experienced classical musicians, including choir director William Howard.

It's cabaret seating at the concert so organise a table of your family and friends. Bring your own snacks and drinks to enjoy and have a great night out. Tea and coffee will be provided. The concert will be at Holy Cross Primary School, Hamilton Road, New Gisborne at 8.00 pm on Saturday 10 May. Please phone 5426 4649 for all enquiries or email the choir at [gisbornesingers@iprimus.com.au](mailto:gisbornesingers@iprimus.com.au). Adults are \$15, Concession holders \$10.

**Nature's Garden**  
*Quality 100% Organic Produce*

## DISCOVER THE HEALTHY BENEFITS OF AN ORGANIC LIFESTYLE

At Nature's Garden, our aim is to provide you with the highest quality 100% certified organic fresh fruits, vegetables, produce and groceries, combined with friendly service and advice, and competitive prices.

We also offer **FREE HOME DELIVERY** with every seasonal fruit/vegie box ordered to be delivered in Woodend or valued over \$50. For all orders under \$50 delivered outside Woodend, there is a \$5 delivery fee.

**RED BEARD BREAD DELIVERED FRESH EVERY DAY FROM TUESDAY TO SATURDAY**

Call in and see our extensive 100% organic range at Shop 4A Collier St, Woodend (cnr Anslow St) or call 5427 4406.

Naturally, better products

NGW2474



### Accountants, Advisors & Planners

#### Office Locations:

111 High Street, Woodend

Ph: 03 5427 8000

2/19 Bourke Street, Kilmore

Ph: 03 5782 1273

email: [admin@riverwoodgroup.com.au](mailto:admin@riverwoodgroup.com.au)

website: [www.riverwoodgroup.com.au](http://www.riverwoodgroup.com.au)

Riverwood Group can offer a *Total Financial Solutions* package for you and your family. Take a look at some of the services we provide:

#### Taxation

All your taxation requirements to suit individuals and small businesses.

#### Investments to Create & Protect your Wealth

Managed Funds, Indexed Funds, margin Lending and more

#### Planning for Retirement

Allocated Pensions, Centrelink Benefits and Payments

#### Stockbroking

Recommended lists, broking facility available, share updates

#### Superannuation & Rollovers

Advice, placements, Self-Managed Super Funds and Eligible Termination Payment Advice

#### Other Services

Home & Investment Loans, Business Loans and Leasing, Income Protection, Life Insurance, Professional Indemnity, Estate Planning and more.

# 'Special Events' is proudly sponsored by the 19th HOLE SHOPPING CENTRE

## Upcoming Events and Meetings

### May

- 5 Public Lecture at Buda Castlemaine 2pm
- 9 Ecumenical Service for Christian Unity, St Ambrose 7.30 pm. All welcome
- 10 Tylden Primary School Fair
- 10 Trivia Night at Newham Hall, ph 5427 0266
- 10 Gisborne Singers Mother's Day Concert
- 11 Mother's Day
- 18 Lions Market
- 20 Blumes Fashion afternoon at Woodend Community Centre
- 24-25 Winemakers cellar door weekend Lancefield & Romsey
- 25 Working Bee Landcare
- 25 AGM Woodend Bowling Club 2pm
- 26 RSL Sub-Branch meeting 7pm venue to be advised
- 27 Direct seeding and land management field day, 5430 4621
- 31 Car Boot Sale at St Mary's Church, 9am, 5427 2315

### June

- 5 '11th Hour' at Woodend Neighbourhood Centre 8pm
- 6-9 Woodend Winter Arts Festival, [www.woodendwinterartsfestival.org.au](http://www.woodendwinterartsfestival.org.au)

### July

- 3 'The Corporation' at Woodend Neighbourhood Centre 8pm
- 7 Public Lecture at Buda Castlemaine, topic Textiles
- 19 Landcare AGM



Ian Marks Liquor 5427 3961
Blue Orange Concepts: homeware 5427 4500
Kosmac & Clemens: optometrists 5427 4577
Woodend Pizza & Pasta 5427 3777
Coles Supermarket 5427 2377
Collier Office & Business Assist and Woodend Copy Centre 5427 3092
Pets Haven 5427 3603
Mitre-10 Woodend Hardware 5427 2314
BP Woodend 5427 2248
Target Country 5427 4366
Macedon Ranges Travel Services 5427 4777
TBA
TBA
Woodend Cycles 5427 2662
Salvation Army Family Store 5427 4421
Loose Change Bargains 5427 4466
Bodywise Underwear 1300 66 17 66
Australia Post 5427 2600
Jasper Art & Handwork Supplies 5427 4455
The Spa Beauty Therapy Centre 5427 3322
<b>HIGH STREET SHOPS</b>
Color Me Cooper: clothing/gifts 5427 1454
Chelleon For Hair 5427 3246
Not Just Fudge 5427 2210
RT Edgar Real Estate 5427 1222
Woodend Bakery Cafe 5427 3434

Australian Breastfeeding Association, Heather 5427 2398	Probus, 5427 2003
Daylight Masonic Lodge, 5427 2480	R.S.L., Anslow Street 5427 3122
Friends of Macedon Ranges Library, Chris/Bill 5427 2469	Red Cross, 5427 1260
Garden Club 5427 3834	Rotary Club of Woodend, meetings weekly at Holgate's Leadlight Room, Kai 5427 1029
Living Word Christian Church 5429 6327	St. Mary's Guild, 11am, 4th Wednesday of month
Historical Society, Courthouse, 5427 2523	St. Mary's Street Stall, 9-12 noon outside Woodend Newsagency (2nd Sat of the month)
Macedon Ranges & District Motor Club, 10 Webb Cres, New Gisborne 1st Wednesday each month 8pm	Woodend & Five Mile Creek Landcare Group, Jo 5427 1909 or Doug 5427 0666, 3rd Tues Meeting, 4th Sunday Working Bee
Macedon Ranges Animal Aid, Buffalo Sports Stadium, 5427 1752	Woodend Angling Club, RSL Hall, 5427 2395
Macedon Ranges Bridge Club, 5427 4440	Woodend Art Group, Railway Station, 5422 6172 or 5427 1659
Macedon Ranges Families of Children with Disabilities Support Group, 5427 3365	Woodend Bird Observers, 3rd Sat of month, Bruce Donaldson 5427 0536
Macedon Ranges Residents Assoc. 5427 1481 or 5427 2651	Woodend Business & Tourism Association, Cori 5427 3434, 2nd Tues of month (BATA)
Macedon Ranges Communicators (ITC), 5427 2669	Woodend Lions Club, Meetings 2nd/4th Wednesday each month, phone Janelle Robbins 5427 1704
Macedon Ranges Photographic Society, 1st Tues of month, Ron Mathews 5427 3284	Woodend Model Railway Club, Buffalo Stadium
Macedon Ranges Social Club (activities for singles over 35) phone 9740 5517 or 9744 2697	Woodend Pony Club, 5427 0487
Neurological Support Group "Contacts", Woodend Community Centre	Woodend Senior Citizens Club, Comm. Centre
Panic & Anxiety Group, 5427 8256	Woodend SES Training Nights, Urquhart St
Parents & Carers of Children with Special Needs, Woodend Community Centre	Woodend Winter Arts Festival Inc., Jacky 5427 1560
	<b>CLUBS: PLEASE KEEP THESE DETAILS UP TO DATE</b>



## T.J. SCOTT & SON

### Funeral Directors

- Serving the Macedon Ranges for almost 70 years
- Available 7 days a week, 24 hours a day
- Specializing in Pre-paid funerals

For further information, call the Scott family:  
John, Kelly, Jack, Paul & Daniel.

5 Piper Street  
Kyneton  
54226455

46 Aitken Street  
Gisborne  
54284155

[www.tjscottandson.com.au](http://www.tjscottandson.com.au)  
[tjscott@kyneton.net.au](mailto:tjscott@kyneton.net.au)

Regular business card advertisements (90mm x 55mm) are \$38 inc GST per month - book & pay 11 months and get 10% off.

## KYNETON EQUIPMENT & PARTY HIRE

**FOR ALL YOUR HIRING NEEDS**

8-12 BEAUCHAMP ST PHONE (03) 5422 2311  
KYNETON VIC 3444 FAX (03) 5422 2930

Email: [kynhire@bigpond.net.au](mailto:kynhire@bigpond.net.au)  
website: [www.kynetonhire.com.au](http://www.kynetonhire.com.au)

## FAIRHURST CONVEYANCING

For all your

### Property Transfers

Ring Sue Fairhurst on

**5427 2382**

27 Urquhart Street, Woodend  
MVCA & AIC

## Fire restrictions are now over – now how prepared are you this winter?

The CFA announced that the Fire Danger Period in the Macedon Ranges officially ended on Thursday 1 May 2008. This means that you are now able to burn off, but obviously please do so with extreme caution. Make sure the area around your fire is well cleared, and that you are also a safe distance from any buildings. Last summer we attended one unfortunate fire, where a burn-off was too close to a house and the fire quickly spread to destroy the entire building.

Speaking of house fires ... we are now entering the most dangerous part of the year.

### Answer these 20 questions:

- 1 Is there a smoke alarm in your home? Do you test it every month?
- 2 Do you replace the battery annually or when the low battery alarm activates?
- 3 Is your house number easy to see so emergency vehicles can find you?
- 4 Have you placed the emergency phone number 000 beside all your phones? And the Vic Bushfire Info Line 1800 240 667 (non emergency number)
- 5 Has your household made and practised a home fire escape plan?
- 6 Have you planned a safe meeting place outside?
- 7 Do you have a fire extinguisher in your home?
- 8 Is your home protected by an electrical safety switch?
- 9 Are the keys kept in or near exits with deadlocks?
- 10 Do you always have electrical repairs, alterations or renovations done by a qualified electrician?
- 11 Do you avoid overloading power points?
- 12 Are flammable liquids stored away from heaters, hot water service pilot lights and other naked flames?
- 13 Do you avoid pouring flammable liquids in high risk areas – such as refuelling a lawn mower near a hot water service?
- 14 Is your electric blanket switched off before you get into bed?
- 15 Do you always use a fire screen with an open fire?
- 16 Are heating appliances kept safely away from laundry, curtains and furniture?
- 17 Are matches and cigarette lighters kept out of the way of children?
- 18 Do you clean the lint filter of your clothes dryer after each load?
- 19 Does everyone know the cold water first aid treatment for burns?
- 20 Is there clear access for CFA trucks to get close to your house – at least 4 metres wide x 4 metres high?

## E'Clips Hair & Beauty

Ph: (03)54 273 822  
Shop 3/115 High Street  
Woodend 3442



*Relax ... we understand it's all about you!*

### ***How did you score? Every YES scores a point!***

Less than 10 – The potential for fire in your household is dangerously high. You need to be more than fire aware. 10 to 15 – Not bad. But there are still several things you can do to decrease the likelihood of a fire. 16 to 20 – Well done! You are giving yourself the best chance of protecting your life and property from house fire.

The CFA has prepared a special website for winter safety which can be seen at: [www.checkyourhotspots.com](http://www.checkyourhotspots.com)

### ***A Great 'Good Friday' Collection***

Once again, the Woodend and Newham CFA conducted the annual Good Friday collection for the Royal Children's Hospital Appeal throughout the roads, streets and tracks of the area. A very big thank you to all of the CFA members, family members and friends from both brigades, around 50 in total, who volunteered to doorknock and count, many giving up most of their day, and to the Ladies' Auxiliary for ensuring that all were well fed and watered. And a special thanks to everyone in the Woodend and Newham areas who donated so generously, raising a record of nearly \$8,500 - including \$6,500 for Woodend and nearly \$2,000 for Newham. A special mention to the McKinnon family who had four members collecting and between them they raised just under \$1,700. Unfortunately, we were not able to cover every home, and many people were away for the Easter break, so if you still wish to donate, please drop into the Woodend or Newham CFA stations any Sunday morning to 11am with your donation – up to the end of May.

### ***Congratulations to Woodend medal winners***

Woodend CFA was successfully represented at the recent Victorian Police & Emergency Service Games. Ben Muir won 3 Silver and 2 Bronze Medals in the 100 metre sprint, 200 metres, 1500 metres, long jump and high jump. His father Dave Muir (a former Victorian Champion) won a Silver medal in the 100 metre sprint, doing a hammy at the same time. Geoff Wells won a Silver Medal in the Scoped Rifle Prone Position. And Amber Smeenk (her profile was in last month's Woodend Star) won two Bronze Medals in the Equestrian Dressage. Well done to you all, a terrific effort!

### ***2008 Woodend CFA Annual Dinner Saturday May 17***

The Woodend Fire Brigade will be celebrating our 112th year at the annual dinner on Saturday May 17. If you are a former CFA member or are interested in attending please see contact details below. We will again be asking local business for some donations as raffle prizes, hopefully you will all be as generous as usual.

For further information contact Captain Mick Christie on 0419 870 601, call the Woodend CFA on 5427 2356, or visit the station in Urquhart Street. Remember, we're always looking for new members – especially people able to respond during the day.

The Woodend CFA is a volunteer emergency service, committed to Creating a Safer Community.

Submitted by Lieutenant Mike Dornau, Woodend CFA

**All news items, articles and community news columns must be received by 15th of each month.**

***Are you a community organisation looking to get your message out? We accept submissions from community groups for articles free of charge. For advertising rates see page 2 of this issue.***

## Photographs by Marnie

Naturally, beautiful portraits taken on location

- Babies & Children
- Victorian & Costume • Weddings •

Marnie Tole

Photographer

03 5427 4668

0405 326 324

Woodend

[marnietole@yahoo.com.au](mailto:marnietole@yahoo.com.au)

## **A little time and effort makes the world go round**

They make up 34% of the national population, together they cram about 700 million hours' (about 80,000 years') work, into every year – and they don't get paid!

"They are our volunteers – the backbone of every small community," Local Federal Member Fran Bailey said recently.

"More than 5.4 million adults do voluntary work each year and May 12 to 18 is National Volunteer Week – our opportunity to officially thank all those people who give their time, effort and resources to make our communities so much better.

"The theme of this year's event is 'Volunteer's Change Our World' and I am sure that everyone can think of at least one occasion, where one person's small act of kindness has made a big difference to them or their community."

Fran said that in rural and regional areas like ours, volunteers were the first to put their hand up to help and the 'last to leave the field' in times of crisis.

"All of our volunteers – from the parents who help out at Auskick on Saturday mornings and man the barbecue at the school fair, to our volunteer firefighters who put their lives on the line – are ensuring that our communities continue to be strong, united and most of all, a great place to live and raise a family," Fran said.

National Volunteer Week was first held in 1989 and volunteering continues to grow each year. In 1995, 24% of the population did volunteer work, that grew to 32% in 2000 and 35% in 2006.

"These figures show that not only are more people willing to give their time to help, but that we are also relying more heavily on our volunteers to 'get the job done'," Fran said.

"I'd like to ask everyone, next time you are at the local tennis club, primary school, Rotary barbecue or community Tai-Chi class, to look around at how many unpaid 'workers' there are around you and say 'thankyou', or even roll up your sleeves and lend a hand!

"I know from first hand experience in my office, that a little volunteering really does go a long way."

For more information about National Volunteer Week, visit [www.volunteeringaustralia.org](http://www.volunteeringaustralia.org).

Submitted by the office of Fran Bailey MP, Federal Member for McEwen

## SOLAR DIRECT

- Solar Hot Water
- Grid Interactive Solar Systems
- Stand Alone Power Systems

Ph: 1300 55 77 98

Mbl: 0411 269 489

Lancefield

## Kyneton District Health Service

### WOODEND AUXILIARY NEWS

On April 10 the Auxiliary held a very successful function, a sale of shoes, handbags and accessories by Kerry Kuhmley. The event was transferred from the RSL Hall to the Woodend Bowling Club, which was a very pleasant venue. A door prize and an excellent afternoon tea, plus a small raffle, added to the percentage of sales donated by Kerry

The total raised for the day was over \$750!

Thanks to all who supported this event, and special thanks to the members of the Woodend Bowling Club who let us have the venue for no charge, at very short notice.

Because of the problem the RSL are having with their Hall we won't have another function this year, but we will run a Fathers' Day Raffle in August, so watch out for us, please! We always get great support from our townsfolk for our activities.

We will have our regular meeting on Thursday June 12th – venue to be advised.

Submitted by Jo Clancy

## Woodend Visitor Information Centre

High Street Woodend

Ph 1800 244 711

## An Autumn Walk in the Buda Garden

Members of the public are invited to the first of Buda's Public Lectures for 2008 commencing at 2pm on Monday 5th May.

Buda's Garden Curator of over twenty years, Dianne Thomson, will discuss the challenges of maintaining a large heritage property and lead a walk through this remarkable garden that has stood the test of time and drought. Renowned author, Peter Cuffley, will add his comments from a historical perspective.

Encompassing 1.2 hectares, Buda is heralded as one of the most significant 19th Century Gardens surviving from the goldfields.

The lecture and walk will provide a great insight into the management of one of the greatest heritage assets in this region. Entry is by \$5 donation.

Bookings are not necessary; however, further information can be obtained by ringing 5472 1032.

A second Public Lecture with the topic of Textiles from the Buda Collection is scheduled on Monday 7th July.

## New Movies that Matter

The success of the "Movies that Matter" program in Woodend has prompted a new series of films to be shown.

Series two is an interesting and exciting mix of new releases and contemporary classics.

The first offering (May 1 & 4) *Darwin's Nightmare* was recently shown at the Melbourne Film Festival and uses the Tanzanian fishing industry as a metaphor for the unintended consequences of globalization.

In June the featured film is the Leonardo DiCaprio narrated *11th Hour* followed in July by *The Corporation*, completing a trifecta of recent releases.

In a change of pace, the August feature is *Koyaanisqatsi*, an independent film by Francis Ford Coppola with a film score by Philip Glass. *Koyaanisqatsi* is a visually stunning 1982 release depicting life out of balance.

WISE (Woodend Integrated Sustainable Energy) and the Woodend Sustainable Living Community (WSLC) host the "Movies that Matter" at the Woodend Neighbourhood House on the 1st Thursday of the month (with repeat screenings the following Sunday).

All movies are shown free of charge but a donation of \$12 (\$8 for members of WSLC) is requested to cover venue and supper costs. The "Movies that Matter" series is supported by the Red Beard Bakery in Trentham.

For further details about WISE please phone Peter Hansford on 0417 050 939.

The movies are held on the 1st Thursdays of each month 8.00-10.00 pm, and repeated the following Sunday 2.30-4.30 pm, at Woodend Neighbourhood Centre, 47 Forest St. Refreshments served, \$8 members, 12 non-members.

June 5 & 8	<i>11th Hour</i>
July 3 & 6	<i>The Corporation</i>
August 7 & 10	<i>Koyaanisqatsi</i>
September 4 & 7	<i>Power of the Community</i>

## An Inconvenient Truth updated

You've seen the movie, or at least heard of it, now see an update from an Al Gore trained presenter, Cr David Jones.

Cr. Jones, currently mayor of Bendigo, will present an updated version of Al Gore's *An Inconvenient Truth* at the Neighbourhood House at 47 Forrest St Woodend on 15th May starting at 7.30.

John Randles (President of WSLC) and Bruce Mildenhall (President of WISE) are thrilled to be hosting the event and extend a warm welcome to all members of the community.

Al Gore's movie *An Inconvenient Truth* has been an important tool in raising awareness of climate change. Whilst the presentation is increasingly designed around solutions and ideas there is a strong emphasis on the underlying science.

According to Cr Jones the latest version of the Al Gore material, updated just weeks ago, will be presented in Woodend.

Cr Jones is excited by the establishment of local environment groups. "Communities across the globe like WISE and WSLC are great avenues for local action and by joining people together they enhance the ability for people to get involved, develop their knowledge and join other groups in fighting the most important fight we face.

As Mayor of Bendigo I have watched with amazement as public debate and decision making around such fundamentally important issues such as water policy have been reduced to little better than farce due to resistance of acceptance of the realities of global warming and climate change."



**FIREBIRD MOTOR REPAIRS  
CAR WASH**

31 URQUHART STREET  
WOODEND 3442

OPEN 7 DAYS  
Phone (03) 5427 2255



**BUDA**  
Historic HOME & GARDEN

*Contemporary Textiles Award, June 08*  
\$250 prize in each category with an overall prize of \$750  
TEXTILES CATEGORIES (Theme is Gold). Embroidery of Original Design, Mixed Media, Working with Yarn, Pigment, painted, dyed fabric, Wearable Art, Modern Interpretation of Traditional Ethnic Style. \$10 per entry per work non-refundable. Students FREE. Entries close 2nd May 2008.  
Open Wednesday to Saturday 12pm—5pm & Sunday/Public Hols 10am—5pm  
42 Hunter Street, Castlemaine ~ Ph: 5472 1032  
admin@budacastlemaine.org www.budacastlemaine.org

## Woodend Art Group

A dozen members have just returned from a most enjoyable weekend of painting down at Lorne. We have traditionally planned such weekends away for a number of years, and it is a great chance to escape for some quality time together doing what we love. Our second term has begun with our usual classes in Drawing, Life Drawing, Oils and the children's Folio Club. We also have a full day workshop in Acrylics which is being tutored by Helen Cottle.

The Group is also getting organised for our special Queen's Birthday Weekend Show (at our rooms at the railway station) which will offer a display of Contemporary and Traditional art works, some demonstrations in various media, and a chance for the public to get involved in a 'peoples mural'. We hope that many of you will pay us a visit.

For any enquiries please call Pamela Simmons, 54271659

**MACEDON RANGES  
SELF STORAGE**

* 7 day access	Store your:
* Individual units	* Cars
* Affordable prices	* Boats
* Insurance available	* Business documents
* Now Fully Alarmed	* Furniture etc.

**Lot 3, Hoyle Court, Kyneton 5422 1898**  
**(Off Beauchamp St) 5422 3488**

## Trivia of the Century Newham Hall

All proceeds to go to the restoration of the Newham Hall. Come for a great night of fun, entertainment and the chance to win loads of prizes. Lucky door prize and mystery auction. Trivia Night on 10th May, at 8 pm, Newham Hall. Adult Tickets \$20 and Students \$5. Phone Coral 5427 0266. BYO drinks and nibbles, tea, coffee and cake provided.

## Armstrong Collins & DeLacy SOLICITORS

*Established 1867*

## Commercial, Property, Estate and Family Lawyers

**Woodend Office:**  
**81 High Street, Woodend**  
**Phone 5427 1472 Fax 5427 3073**

**Kyneton Office:**  
143C Mollison Street, Kyneton  
Phone 5422 1677 Fax 5422 3357



Zumstein Pty Ltd  
Factory 1/32 Brooke Street  
WOODEND VIC 3442  
Ph 03 5427 4579  
Fax 03 5427 3559  
Mobile 0412 138 364

## DESIGNER AND MAKER OF FINE FURNITURE AND JOINERY

solid and veneered furniture  
external and internal doors  
wardrobes, studies  
laundries  
bathroom furniture

"Third generation woodwork really shows"

## 2008 Woodend Autumn Carnival Wrap-up

God was certainly smiling on the St Ambrose School and Parish as the rain from Friday night was swept away to reveal a stunning day for this year's Carnival held on Saturday 12 April. And a stunning day it was with hundreds of people from the local community and further afield converging on the school grounds for the annual Carnival. The Carnival rides proved a huge hit with all the children and some parents too! Many made it to the top of the climbing wall, the pony's were kept busy all day and the Paratrooper probably had the longest queue.

Those who wanted to sit back and relax in the food court area were treated to some outstanding entertainment by local singers, musicians and dancers with the highlight again being the Woodend Idol competition. The Hall was also abuzz with the spinning wheel, loads of deals at the trash and treasure stall and performances on the stage from hip hoppers, callisthenics groups and the Sacred Heart College Band.

The event would not have been the huge success it was without the outstanding contributions from all the school and parish families who gave up their time to either be on the committee, co-ordinate a stall or activity or help out on the day.

At the time of writing this article the final profits were still being determined but it is estimated that \$17,800 was raised from the day – a tremendous effort!

St Ambrose would also like to take this opportunity to sincerely thank all of the local businesses that generously donated to the day through sponsorship and/or donations. We know that you are always being asked for donations from local groups for fundraisers and we truly are grateful for your support. Again without this support, the event would not have been the success that it was.

We would like to acknowledge and thank all of the businesses/organisations listed below for their support for the 2008 Carnival.

*Ambulance Service Victoria • Hair Blues • Petrucelli Family • Andrews Mountain Café • HEP Steel • Phil Connell • Ann Daley • Highlands FM • Plumrite • Armstrong Collins & DeLacy • Holgates Brewery • Polly McQuinn • Ben Hall • Ian Marks Liquor • Post Office Farm Nursery • Bertalmio Family • Ivor & Pauline Johnson • Primary School Wear • Blue Orange Concepts • James Family • Quick Snips Barber • Bourkies Bakery • Jason Johnson • Rieracsew • Bradleys Curtains & Blinds • Jaspers • Riverwood Group • Brumbys Bakery • Joe Tullio • Sacred Heart College • Café Colenso • Karen Wornes • Schatzis • Carmel Amelia's School of Dance • Keatings Real Estate • SES • CES Consulting-Workcover Consultants • Kerri's Bundle of Bears • Sign Obsession • Chases Bizarre • Kyneton Crane Hire • Sound Vault • Chelleon • Langley McKimmie • Sovereign Hill • Collier Office & Business Assist • Literary Latte • Sweet Ideas • Color Me Cooper • Lombards • Switch Too • Commonwealth Bank • Macedon Ranges Calisthenics • Takos Family • Connally Real Estate • Macedon Ranges Travel • Target Country • Cookies Crumbs • Macedon Ranges Waste • Tartan Tours • David Juriansz • Maloa House Gourmet Delights • The Key • Dennis Barker • Mark Duley • Tony's Practice • Discovery Centre (Bendigo Trust) • Mary Larnach-Jones • Turner Family • Donegans Transport • Match Trading • Uncle Festers • Doug Hilton & Kelly Chune • May 5 Gifts • Victoria Hotel • E'Clips Hair • Michels Patisserie • Warners Jewellers • Elephant Walk Café • Mignuoli Family • Women of Note • EpiGenetics • Mine Experience Bendigo • Woodend Bakery Café • Excessories • Miss Anita & her Hip Hop Gang •*



*Helping you save  
for a  
"Rainy Day"*

**Bob Nixon**

B.Com., Dip.Ed., Dip.A.I.I., Cert. IV Fin. Plng., FA.FA.

**Authorised Representative,**  
Total Financial Solutions Australia Pty Ltd  
ABN 58 003 636 968 AFSL No.246545.

Shop 10, 34a Hamilton Street. Gisborne Vic 3437

**Ph: 03 5428 0123**

**Fax: 03 5420 7710**

**E: bobnixon@netcon.net.au**

**W: www.bobnixon.com.au**

*Woodend BBQ Chicken • Fairhurst Conveyancing • Mitre 10 • Woodend CFA • Funfields Whittlesea • MR Projects • Woodend Dental Clinic • Galactic Circus @ Crown • MSAC • Woodend Fruit Market • Glens Country Meats • My Style Furniture • Woodend lions Club • Goseeshell Hairdressing • Neil Le Nepveu • Woodend Newsagency • Grinters Horse Supplies • Nick Hall • Woodend Pharmacy • Gumnutters • Not Just Fudge • Woodend Video • Habitat • O'Callaghan Family • Zappadoo*

The Carnival committee will be taking a well earned rest for the next few months and then will be back into planning for the 2009 event.

Once again to the whole Woodend community thank you for supporting the St Ambrose Parish School.

Anne-Louise Lindner, President, Carnival Committee



*WSLC President John Randles explains site surveying techniques to the team.*

**Paul Groves**

Mobile 0414 928 491

Phone 5427 2171

## Computer Sales, Repairs & Consulting

Home and Office Networking  
Onsite Repairs and Maintenance  
New Computer Systems

paul@pcweirdness.com

## Woodend Green Corps April 2008 Update

Reporter: Victoria Vincent, Woodend Green Corps Team Member

The Woodend Hub has been a hive of activity over the past month with the Green Corps team making some great progress on the permaculture garden for the Woodend Sustainable Living Community (WSLC). The site is starting to take shape with action happening in every corner. Paths and drainage systems have been constructed, footings for the chicken house dug and a solid 350 mud bricks made with the help from Rob Bakes from The Mudbrick Circus.

The work being done incorporates the principles of permaculture, including minimising energy use and using resources more efficiently. In using these principles the chicken house will be built from the mud bricks made from the different soils present on site. Chickens are necessary for the making of compost, as they break down the food scraps left over from the vegetable garden. The compost will then be used to replenish and nourish the surrounding garden beds. In doing this we are using materials in an economical and natural way and are minimising the impact on the environment.

President of the WSLC John Randles said "this is very much a community project and we are getting wonderful support from local traders and community members". The Woodend Lions Club has very generously donated \$3000 of funding towards the project. Mt Macedon Shire is providing \$700 for the purchase of plants as well as assisting with the delivery of necessary materials and the use of a tool trailer. Many other local traders including Mitre 10, Tylden Quarries, Black Forest Saw Mill, Prendergast Garden Supplies, and the Woodend Nursery have all helped contribute to the project and we are immensely appreciative of this.

The Green Corps team has not only been working on the site at the WSLC, but has helped with some tree planting with the Woodend Landcare group along the five mile creek. Landcare members, Jo Clancy and Peter Yates, taught the team many valuable skills in the tree planting process and 350 native trees and shrubs were planted including the Black Gum, which is only naturally present in Woodend.

For more information on the project, please contact Krista Patterson-Majoer, the Green Corps Team Leader, on 0407 686 289. (See photo to the left of this article)

*Are you confident you are getting  
the best deal  
from your bank?*

Westpac Woodend have specialist Bankers available by appointment for the following services

- Transaction Accounts • Business Accounts
- Savings Accounts • Merchant Facilities
  - Home Loans / Investment Loans
  - Credit Cards
- Financial Planning / Superannuation
- Personal Loans • Insurance Needs

We may be able to save you time & money!

Feel free to call us  
for an obligation free appointment on

**5427 3426**

or visit our branch at 75 High Street Woodend

**Westpac**

75 High Street, Woodend

**5427 3426**

**Opening Hours**

Monday – Thursday

9:30 am – 4:30 pm

Friday 9:30am – 5:00pm

## SHOP FOR LEASE



**19th Hole  
SHOPPING CENTRE  
WOODEND**

Prominent Position

Size 90 Sq.Mtr.

**CONTACT IVOR JOHNSON**

**B.H. 5427 4089 or 0407 273 961**

## News from Newham

We have started the first part of the restoration of our Hall by spending our Grant from Heritage Vic to replace the stumps and put down a new floor. As part of this we have put in sub-floor insulation. This is the first step in making the hall more user friendly and comfortable. Thanks to Ian Miller for the organization and a significant amount of the work. We are in the process of appointing an architect to take us up to planning permit stage as well as applying for our major grant for our project.

Our fund raising is going along brilliantly. Our Garage Sale raised almost \$5,000 and has taken our total up to \$17,500. Many people worked very hard to make our sale so successful and we thank them for all their help, Narelle, Val, Fran, Kathryn, Jenny, Bob and Glad, Alistair, Sue, Coral, Jill and Colleen, Ian, and Barrie Sutton for doing the auction, and Neville Crozier did a huge amount of carting for us. Donations of goods were just overwhelming! Thankyou to everyone who gave.

Our current fundraiser is "a trailer load of wood" raffle and we need to thank Stephen Smith of Mahoney's Rd for his generous donation of the wood. In May our fundraiser is a Trivia Night, there will be plenty of notices around, so please come along and enjoy the night. Contact Coral Crozier @ 5427 0266 for bookings.

A stalwart of the Newham CFA died in March. Bernie Yates, along with his wife Doris, worked for many years for the CFA before moving to Woodend. We send our condolences to Doris and her family.

Don't forget to use the letterbox at the Store for your mail. Postal items have fallen off and if we don't use it then we will lose it!

Bob and Gladys Adams celebrated their Diamond Wedding Anniversary on the 10th April - congratulations Bob & Glad, may you have another 60yrs of wedded bliss!!! Glad's advice for a long marriage?? 'communication and not wanting to be on the "top shelf" all the time'. Bob's father was the original caretaker of the Hall and Bob has continued that role, and they have both contributed enormously to life in Newham.

If you haven't donated to the Hall yet here is a gentle reminder. Every \$ helps even if it is only \$1 and we do need the community of Newham and surrounds to help us.

submitted by Sally Stabback

**TRIPLE** 

**DRIVER TRAINING**  
Accredited Certificate III and IV Instructor  
Servicing Macedon Ranges and Surrounding Areas

Ph. Laurie 5427 1192  
0419 005 185

**FOR SALE: Golden Acres Spray Unit, 400L. Brand new Honda GX 160 motor. Extras: 2 x100m hoses, boom spray, attached to own trailer, detached 50 m fire reel/hose. \$3500. Phone Margaret on 5427 2696**



## What a Winner!

Mort Tobias from Blue Orange Concepts store in Woodend was the Woodend Children's Park winner of a dinner for two at Castlemaine's Mexican restaurant Simpatico this month. Mort won the prize for being the first to fill the Children's Park donation tin located in her store. Children's Park member Shevaun Campbell (pictured left) has been thrilled with the success of this campaign which alone has raised over \$500 so far.

Mort is one of a growing number of local businesses who have supported the Children's Park by displaying the donation tins, providing goods and services and other fundraising efforts.

In addition, Woodend Pharmacy has raised about \$900 in the first month of its special offer which sees a percentage of sales from all generic and Pharmacy Choice products donated to the Children's Park. This offer to the park is ongoing.

These efforts are a very helpful contribution to the \$300,000 needed to build the park, and the Woodend Children's Park wishes to thank the generous support of local businesses and residents and urge our residents to shop locally.

We still have a long way to go, so please get behind this worthwhile project by supporting our fundraising initiatives. The park is launching it's paver campaign shortly, where the public can purchase a personalised brick that will go into the entrance of the park, so keep an eye out for those.

For anyone wishing to read further news of the park's updates and events, please log onto our website [www.woodendweb.org/childrenspark](http://www.woodendweb.org/childrenspark)

*Meta Massage*

REMEDIAL MASSAGE, SHIATSU, REIKI  
Raymond White

Telephone 0411 268 336  
or 5427 4237 for an appointment

18 years experience • Chronic and acute conditions  
Sports injuries • Rehab work

## The fencin' fella

- colorbond
- tubular
- timber
- steel picket
- pool

## Mini Earthmoving Kanga Loaders

Attachments include:  
rotary hoe, soil leveling bar,  
4 in 1 bucket, trenchers,  
post hole diggers, tipper

**SHAUN BARRON**

MOB: 0407 232 900 or 5422 3488 AH

## Macedon Ranges BaBs

The Macedon Ranges BaBs (Birthing and Babies Support) group recently moved its fortnightly "Peer Support" meetings from Woodend to Gisborne Community Health Centre.

BaBs was created in the Macedon Ranges by a group of local women, who felt there was a need in the community for women and families to get information and support that may help them through pregnancy, birth, newborn care and general parenting issues.

Every fortnight there is a new topic discussed. Up and coming topics include; *Returning to Work* on May 12th; and *Sleep for Everyone* on the 28th of May; and *Playtime* on June the 23rd. Each meeting is facilitated by a local midwife, and when available, a guest speaker from the community will speak on the relevant topic. Children are welcome but please BYO quiet toys and nibbles.

BaBs meet between 0930 and 1130 at the Gisborne Community Health Centre at 5 Neil Street, on the 2nd and 4th Monday of each month (during school terms only). For more info please contact Amanda – 0422 491 976 or Tanya – 0418 587 520, or check out their website at [www.woodendweb.org/babs](http://www.woodendweb.org/babs)



Home  
Kitchen  
Giftware  
OPEN 7 DAYS

**Moltencast iron  
from Kitchen Craft.  
Quality cast iron at  
affordable prices.**

**Blue Orange Concepts**  
Shop 2, 130 High Street, Woodend. Ph 5427 4500



**COMPUTER  
SERVICE**

Sales - Service - Training & Help

THE BANK - OFFICE 3 - 75 HIGH ST WOODEND  
JASON JOHNSON - 0400528129  
[pcs@live.com.au](mailto:pcs@live.com.au)

## Basic Counselling Skills at Woodend Neighbourhood House

Thursdays 9.30am to 12.30pm, from 22 May for 6 weeks, cost \$20, Tutor Sam Luxemburg

Sam has been a psychologist for over 20 years and has lived in the Woodend area for over 10 years. He is director of The Lux College which provides a two year Certificate course in counselling ([www.luxcollege.com.au](http://www.luxcollege.com.au)).

This basic skills course is about creating the counselling relationship. This relationship is trusting, supportive, safe, genuine and confidential. The counsellor needs to show empathy (not the same as sympathy), to have positive regard for the client, and to be congruent. We will practise with each other (real play rather than role play). A book of notes and exercises is provided as part of this course.

*I have been attending the Lux College for 1.5 years and have found the Lux College to be both an intimate environment and a personal growth experience. I still ask myself if I would like to be a counsellor at the end of the course and have realised that it's the journey that is important not the final result.* (Elisa)

*This course has enlightened me into the art of really listening and therefore I can hear. I see people who are angry, it may be directed at me but I know now that they own the angry feelings and I do not need to take them on board. . . I am now into the second semester enjoying the course and enjoying my life.* (Vicki)

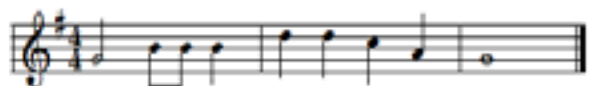
Both Elisa and Vicki have completed the Basic Skills and are now in the Certificate course.

This course could benefit you if you work with people, want to improve relationships in your life, or feel ready to take a step towards a new vocation.

To book a place, call Sarah Campbell 5427 1845. For other enquiries, call Sam 0428 270 401

[Compact Discs](#) [Piano Accompaniments](#) [Church Organ](#) [Multitracks](#)

## Mount Macedon Music Studio



### Music Tuition

Variety of instruments and voice. All ages.  
Lessons as singles or pairs; weekly, fortnightly or casual.  
Practice sessions available on Grand Piano or Drum kit.

### Group Music Workshops

Instrumentalists and Singers.  
Ensembles and Solo Performances,  
Theory and Aural Development,

### Music Performances

Special occasions.

Contact the Director,  
Mount Macedon Music Studio

Linda Ceff

M.Mus, B.Mus (Hons), APRA & VIT reg.

phone: 54261264 or 0437866030

email: [mountmacedonmusicstudio@bigpond.com](mailto:mountmacedonmusicstudio@bigpond.com)

[Tuition](#) [Correct Technique](#) [Fun](#) [Education](#) [Workshops](#) [Concerts](#)

Community Events  
Examinations  
Aural Training  
Music Theory  
Compositional Assistance  
Music Typesetting

Musical Expertise  
Ensembles  
Classical Music  
Jazz Music  
Popular Music  
Performances  
Print Publications

# TRADE & SERVICE DIRECTORY

## ANIMAL CARE

### MACEDON RANGES PET CARE

15 years animal nursing.  
Dog walking, feed household pets &  
farm animals while on holidays.  
**Ph: Judy on 5427 1352**

## AGRICULTURAL CONTRACTOR

### PHILIP BEATTIE PTY LTD AGRICULTURAL CONTRACTOR

Hay & Silage Round Bales  
Mowing Small Bales  
Raking Large Bales  
Spreading Ploughing Sowing  
45 Millers Lane Ph (03) 5427 0702  
Newham 3442 Fax (03) 5427 0702  
beattie@netcon.net.au Mob 0419 573 226

## STONELAYING & PAVING



Stonemason & Paver  
specialising in

- Retaining Walls
- Drystone Walls
- Stone Houses
- Paving
- Over 20 years' experience

**Cameron Dunn**  
Ph (03) 5427 4778 Mob 0429 162 589

## PSYCHOLOGIST

### Sam Luxemburg

Registered Psychologist

- Personal Counselling in Woodend & Romsey (Medicare rebate available)
- Counselling Training
- Myers-Briggs personality testing

**Phone: 0428 270 401**  
www.luxcollege.com.au

## COUNSELLING



**Keryn Allan** COUNSELLOR  
Dip. Prof. Couns.,  
M.A.C.A.

Phone: 0417 011 300  
Email: kezallan@ozemail.com.au

Grief & Loss  
Trauma  
Stress, anxiety &  
depression  
Anger management  
Workplace issues  
Behavioural problems

## DRESSMAKER

### Beryl's Tailoring

DRESSMAKING, ALTERATIONS,  
BRIDAL, EVENING & DAY WEAR,  
LADIES AND MEN'S REPAIRS



**Beryl Bachelor**  
QUALIFIED DRESSMAKER, NEWHAM

BY APPOINTMENT ONLY  
MON TO FRI 9 - 5

5427 0568 0418 510 179

## TREE SERVICES



### A&P Tree Services

- tree pruning / removal • stump removal
- tree planting / transplanting • rope & harness climbing
- confined space removal • fully insured

Professional commercial & residential tree maintenance  
all work carried out by qualified arborist

Call Anthony **0417 059 969**

## HOME MAINTENANCE

Home & garden maintenance &  
landscaping service including  
decking, pergolas, carpentry &  
painting.

Stuart 0409 150 629  
AH 5427 2465

## EXCAVATOR & BOBCAT

### Cheap 'n' Neat

- Bobcat Excavations
- Bobcat & Tipper Hire
- stump grinder
- & wood splitter

0418 556 634, contact Les

## RUBBISH REMOVAL

### CALDER ENVIRONMENTAL SERVICES

Your local supplier of rubbish removal skips  
from 2 to 15 cubic metres.

**We deliver • You fill • We remove**  
**WE BUY OLD CARS & SCRAP METAL**  
Scrap bins supplied

Conditions apply

**Prompt reliable service**  
**0428 509 525**

## GATES, FENCING, PAVING

### GATES, FENCING & PAVING

- Automated Gates
- Colorbond Sheet Fencing • Pool Fencing
- Timber & Steel Picket
- Gates Made to Order

FREE MEASURE & QUOTE  
PHONE LAURIE 0419 005 185  
5427 1192

## METAL GATES

### BVM Metalcraft

SPECIALIZING IN OLD WORLD AND  
MODERN STYLE GATES

STEEL BALUSTRATING INCLUDING STAINLESS STEEL  
ROPE AND WROUGHT IRON, PUNCHED RAIL FENCING  
ALL MATERIALS USED ARE  
GALVANIZED OR ZINC PLATED

FINISHED IN YOUR CHOICE OF POWDERCOAT  
OUR DESIGN OR YOURS

METAL POLISHING - ALLOYS, BRASS, STAINLESS STEEL  
**CONTACT BEN 0422 288 768**  
FOR A FREE QUOTE

## ELECTRICAL SERVICES

### RML Electrical

REC 15642

Installation - Maintenance - Drafting

**Robert (Rolly) Leslie**  
Mobile 0438 347 896

Tele/Fax (03) 5427 0197

9 Ingletons Road  
Cherokee, 3434



## EARTHMOVING

### BLACK FOREST EARTHWORKS

**Bobcat & Tipper Hire**  
Driveways, crush rock deliveries  
Rubbish removal

**Contact: Dave 0412 840 051**

## PLUMBING SERVICES

### Need a plumber?

For reliable, professional, local service

- Domestic
- Commercial
- Industrial

Maintenance  
**Work**



Call Mal: 0423 204 277 5427 3315

Trade Page Ads are \$25 per month inc GST. Pay for 11 months in advance and receive 10% discount.

# Heritage Society News

The account of the opening of Woodend's Avenue of Honour Continues. This is taken from *The Woodend Star* Saturday 14th September, 1918. A memorable day indeed!

*The whole of the 150 trees put in were planted before the opening day, that course being followed as the season had become well advanced, and nothing remained to be carried out on Wednesday last but the official dedicatory proceedings. These were on a very complete and successful level well worthy of the event, and earned the committee of management great credit, for it was due to their work, together with the invaluable assistance of the ladies (who had, with characteristic energy, thoroughness and generosity, previously fulfilled a very important part in connection with the whole movement, by catering for the several working "bees" held), and the co-operation of the community generally, that the opening celebration is entitled to be classed as the greatest and most impressive public event ever witnessed in the district. The widespread interest felt in the function was strikingly evidenced by the large attendance, which must have numbered fully twelve hundred persons, including some visitors, and was strongly representative of all sections of the community and all parts of the shire, and the gratifying manner in which the afternoon's programme was fulfilled must have afforded all the utmost satisfaction, and none more so than the members of the committee, who had not only been required to devote a lot of time and work to the preliminaries, but had also to put up with a considerable amount of annoying disappointment in the making of their preparatory arrangements, due to apparent disconcert on the part of those from whom they had not unreasonably expected to get the readiest of help, especially in view of the nature of the assistance needed.*

*In the first place, our Federal member (Mr. E. Jowett, M.H.R.), had given a definite promise that he would be present to assist at the opening of the avenue, and that he would endeavour to secure the attendance of the Acting Prime Minister (the Hon. W. A. Watt), or the Minister for Defence (Senator Pearce). After vexatious delay, Mr. Jowett sent along a letter he had received from Mr. Watt regretting his inability to visit Woodend on the date selected for the opening of the avenue, owing to "pressure of business." Then, at the last moment, Mr. Jowett wrote, stating that he himself could not attend as he had to address a recruiting meeting at Korong Vale (which must have been fixed after his agreeing to come to Woodend), on Wednesday evening. After a good deal of "search" on the telephone wires, Mr. Jowett was discovered somewhere in the neighbourhood of Daylesford, and was advised of the predicament in which the committee had been left, and was somewhat pointedly informed that he was expected, in the circumstances, to find a substitute, which he succeeded in doing, for Mr. J. M. Chanter, M.H. R. for the Riverina, and Chairman of Committees in the Federal Parliament, came along in his stead by the afternoon train from Melbourne, accompanied by our State members for the district, the Hon. D. McLeod and Mr. A. Cameron, M3L. A. Then within a minute or two of the arrival of these gentlemen at the avenue, accompanied by a sub-committee appointed to meet them at the railway station, and consisting of the president of the shire*

*(Cr. E. Don), the ex-president (Cr. W.H. McElhinney), Cr. J.H. Thorburn and Mr. R. Cornish, the Acting Prime Minister and a motorcar load of others appeared upon the scene, not to*

## QUIT SMOKING

### QUIT CIGARETTES

**In Sixty Minutes**

**GUARANTEED!**

**Lose Weight For Life**

**Call Now**

**1300 737 146**

Welcome to the Woodend Star

# Kids Club

## May Birthdays

6th	Jamie Staresina .....	Turns 9
6th	Sarah Meacham .....	Turns 11
7th	Nicola Fitzgerald .....	Turns 10
9th	Tyrone Hinsley Hargreaves .....	Turns 5
9th	Jessica Louise Thorne .....	Turns 6
10th	Jett Sanders .....	Turns 3
19th	Remy Sheppard .....	Turns 12
26th	Jamieson Simpson .....	Turns 3

Happy Birthday Everyone!

**You can collect your birthday surprise by visiting Collier Office & Business Assist in the Woodend shopping centre – but you must come in yourself!**

(PS: We need your jokes and pictures! Please drop them in.)

JOIN THE WOODEND STAR KIDS CLUB  
 Fill in your details below and place in the drop-boxes. Age limit is restricted to 13 years old and under.

Full name: \_\_\_\_\_  
 Address: \_\_\_\_\_  
 Date of Birth: \_\_\_\_\_ Age: \_\_\_\_\_  
 Phone: \_\_\_\_\_  
 Parent/Guardian Signature: \_\_\_\_\_

*Wondering what to do with your visitors over the Winter break?*

**Woodend Visitor Information Centre**

**High Street Woodend**

**Ph 1800 244 711**

**All news items, articles and community news columns must be received by 15th of each month.**

*remain for a few minutes to assist in the early afternoon ceremony, but on the way to Bendigo, under "pressure of business", to be attended to there by Mr. Watt some hours afterwards. The Acting Prime Minister's appearance at that particular moment caused much surprise to those who recognised him, and some wonderment as to whether the incident was due to design or a strange coincidence. If, at all events, there were any design about it, it failed to work out in accordance with those wishes of the committee which had previously been denied, owing to "pressure of business," for Mr. Watt, after considerably "slowing down," and gazing about him, sped on his way, unable to spare even a few minutes to a function such as ours – though of undoubted moment. But, withal, it was, as already stated, most successfully performed, and will probably live longer in the memories of this community than even Mr. Watt.*

To be continued.

## Woodend Tennis Club

The Woodend Tennis Club has six ladies teams entered in the Mountain District Ladies Tennis Association midweek competition. New permanent or emergency players are welcome. Contact Kellie Duff on 5427 1857.

Clubhouse hire is available to individuals and community groups. Contact Nadine on 5427 1571.

## Defending Champions' new uniforms

Seven short years since Chinka and Marilyn Steel, Clive and Louise Potter and Frank and Jill Webb conceived the formation of the Woodend Hanging Rock Petanque Club, about 60 members are on the books, of which at least half or more attend regular Club events.

As a non-threatening, passive sport, Petanque appeals to a very broad social group. It's main attribute is as an activity which suits players of all skills, ages and physical capabilities.

While sharing their love of the sport locally with demonstrations for several schools and community groups, enthusiastic members are always proud to promote their home ground at Hanging Rock, widely regarded as one of the best Petanque locations in Australia.

The Club is preparing to host their next big event which is The Country Challenge Cup. It is to be held on Sunday, 25th May with WHRPC defending champions against all eight country clubs.

Clive Potter has updated his original design for the club logo and it has been applied to crisp new uniforms thanks to \$2000 funding made available through the Volunteer Small Equipment Grants 2007, from the Office of the Minister for Families, Community Services and Indigenous Affairs.

Pictured in the new club uniforms at the 2008 National Championships at Beresfield over Easter are Marilyn and Chinka Steel, Marg and Ian Castle and Clive and Louise Potter.



## Woodend District Netball Club

### Winter Season

The Woodend District Netball Club Winter season commenced on Saturday 12<sup>th</sup> April 2008 from 9am at Woodend Indoor Sports Stadium (formerly Buffalo Stadium). Games will be played on Saturday mornings/early afternoons in terms 2 & 3. This year we will probably have three age groups playing Under 11, Under 15, Under 18. Our competition is open to girls and boys in these age groups and new players are most welcome! Instruction will be provided if required. Registrations will be taken on Saturday 12<sup>th</sup> April from 8.30am.

For information, please contact Rachel Crook (President) 5427 2908 or Wendy Lawrence (Secretary) 5427 1697.

## Kerri Hendriks Mobile Massage

Since 2004, I have operated a successful mobile massage service – bringing the massage to you – a service that shows a caring and positive attitude to the needs of each individual client.

As a graduate of the **Australian College of Massage and Natural Therapies**, I currently hold a **Level 4 Certificate in Remedial Massage**, which incorporates *Relaxation* and *Deep Tissue Massage*.

My clients have the opportunity to experience a soothing **Almond Oil** massage, incorporating a **250-year-old natural multi-mineral salt massage stone**, **lavender-scented face towels** and complimentary **body butter** applied to hands or feet on completion of the massage.

*Half hour session – \$40*

*One hour session – \$60*

*1½ hours session – \$80*

*For an appointment, call Kerri  
0403 685 060*

## Macedon Ranges Walk Together

### *The journey starts with one step!*

Would you like to walk easier? Is it hard to walk any distance? Do you have to park close to the shops you need? Do you limit your activities because of walking limits?

If you would like to start in a slow steady manner, in your time and at your own pace consider the **Discover Walks**, which is suitable for walking frames, sticks, disabled, and other low-level fitness.

These are circuit walks available for 30 minutes. You can walk for 5 minutes and then sit down and rest, or for the 30 minutes. The best part is that you are with other people and chat and laugh as you pass each other or walk together and chat. Finish with a chat and a cuppa

There are two **Discover Walking Groups** in Woodend. The leaders are ready and waiting.

1. Helen: phone 5427 1891  
Tuesday, 10.00-11.00am, Inside Circuit

2. Leesa: phone 5420 7458  
Monday, 9.00 am, Outside circuit.

Other groups with vacancies are:

### **Puff, N Sweat**

1. Deann and Rosalie  
Deann: 5424 8143 (6.30 pm), Rosalie: 5427 4585  
Wednesday, 10.00 am

2. Mike and Hubert  
Mike: 5427 1547, Hubert: 5427 3208  
Tuesday, 10.00 am

### **Pram Plus**

Deborah: 5427 3539  
Wednesday, 11.00am