

THE NEW WOODEND STAR



Circulation of 3050 throughout
Woodend postal district, Newham, Hesket, Ashbourne,
North Woodend, Hanging Rock, Carlsruhe, Cobaw.

AN INITIATIVE OF THE ROTARY CLUB OF WOODEND

April 08

A Monthly Community Periodical

First Publication 1997

Volume Twelve No. 3

Woodend RSL Shock:

Closed 'til Further Notice!

In a shock set-back to the Woodend RSL, just one day before the Easter break, they were told to close their doors until further notice – effective immediately.

President Dr Frank Donovan said that he and Treasurer Eric Read attended a meeting with Victorian RSL CEO Michael Annett and Chief Finance Officer Mark Sherwood Thursday 20th March, where the hot topic was a Structural Engineer's adverse report that recommended replacement of the main gable roof trusses of the RSL's Anslow Street premise. The report allowed twelve months for the work to be completed before the building must otherwise be 'locked and secure against any further use.'

Although the Engineer's report itself did not create the immediate crisis, the condition of the roof prompted a swift response from the RSL's insurers who ruled that any event of loss, damage or injury associated with the main roof would be exempted from the insurance cover until the roof is replaced, effective from the date of the report. The State Branch of the RSL would be in breach of its corporate duties if, as owners-in-trust, it allowed the Woodend premise to remain open for business without full insurance coverage for loss, damage and public liability. So the decision to close was inevitable.

'This crisis has really brought to a head the whole issue of our long term operational viability,' said Dr Donovan. Before this shock the Woodend RSL Committee already were well down the path of evaluating new options for deploying its assets (land and buildings) to secure a viable future for the Sub-branch. The temporary closure is expected to speed up plans for renewal – whether by refurbishment or replacement of the existing building.

Dr Donovan believes the decisions ahead present real challenges for the Woodend RSL, but cannot be put off any longer. 'We need to make sure that we honour and respect the hard work, dedication and commitment of all those who gave so much to the development of these facilities over 61 years since 1947,' said Dr Donovan, 'but we also need to put the RSL on the best footing to meet its aims, objectives and responsibilities into the future.'

'As I asked the Committee and members recently: "to those who follow us, do you want to leave behind a burden or a benefit?"'

On a brighter note, the last public function to be held at the Woodend RSL was one of its famous raffles. Drawn outside the front door by RSL Vice-President Reg Till and Ladies Auxiliary President Margaret Russell, under the vigilant eyes of Helen Wright (pictured), three Bendigo

... continued on page 2



Woodend Autumn Carnival

Hosted by St Ambrose School & Parish, Saturday, 12th April

There will be fun and thrills for all the family at this year's Woodend Autumn Carnival, held in the St Ambrose school grounds and hall in Templeton Street.

Experience a Bird's Eye View of town from a crane, go cruising on the back of a Harley and check out the talent in the Woodend Idol.

Scale a climbing wall, take the plunge down a giant slide, or clip clop around the oval on a pony.

Burn off more energy on the trampolines and try a round of mini golf. But don't miss the fabulous array of stalls! Popular attractions such as plants, books, cakes, craft, and trash-n-treasure will combine with crowd favourites including the spinning wheel.

A tasty range of food will be served, starting with bacon & egg jaffles in the morning. Delicious homemade cakes and savouries, Devonshire tea and Dutch pancakes are also on the menu. Of course all good carnivals need fairy floss, and there will be snow cones as well.

Adding to the fun of the day will be hair spraying and plaiting, and airbrush tattoos.

Classroom canvases will be up for grabs and a silent auction will tempt visitors with themed hampers.

Rides and attractions will be priced from \$2 to \$6. Wristbands can also be purchased before the Carnival for \$25 or for \$30 on the day – they will offer unlimited rides on a choice of six amusements, which would otherwise cost \$4 a turn. The wristbands are available from the school office.

A host of free entertainment will run throughout the day including callisthenics, dancing and music acts.

Younger kids might enjoy sand play and plaster moulding, a spin on the trackless train and cup n saucer ride, or a bounce on the inflatable castle.

There will also be a pet show, and Edgar's Mission is bringing some nursery animals for petting.

The CFA, Ambulance and SES will be in attendance and emergency vehicles and equipment will be available for viewing. So come on down to the biggest show in town on Saturday, 12th April!

ANZAC Community Commemoration at the Cross

Residents of the Macedon Ranges area are invited to the 2008 ANZAC dawn service at the Mt Macedon Memorial Cross.

Chairperson of the organizing committee, Dr Frank Donovan, said the service has the reputation of being among the most spectacular settings of the hundreds of community services around the state that day.

... continued on page 3

Central Highlands Broadcasting Inc, now in Woodend

Radio Highlands FM now has its office & studios based in the Woodend Community Centre, Forest Street.

Are you able to spare 4 hours one afternoon per week? 100.7 Highlands FM, Macedon ranges' own Community Radio station needs volunteers for reception, sales/marketing, copy writing and production.

If you can help please contact Charles Gaal, President on 5427 2040 or 0412 304 181.

Web: www.highlandsfm.org.au

Email: thedesk@highlandsfm.org.au

Regular business card advertisements (90mm x 55mm) are \$38 inc GST per month - book & pay 11 months and get 10% off.

Woodend Rainfall Report 2008

Each month we add the rainfall details and the year to date total. Our rainfall report shows 2004, 2005, 2006 and 2007 comparisons. Please note that your own rainfall readings may not exactly match these. These readings are the official BOM readings and have been taken in the same location in Woodend for many decades. All measurements are in millimetres.

	2004	2005	2006	2007	2008	
January	21.2	47.4	49.8	83.5	17.1	Jan
February	6.2	72.2	53.1	27.4	22.1	Feb

YTD: 27.4 119.6 102.9 110.9 39.2 YTD

Reminder: We are now on Stage 3A water restrictions.

For the year to date 29/02/08 there was rainfall of

39.2 mm

1 inch = 25.4 mm therefore the total year to date is 1.54 inches

The New Woodend Star

An initiative of the Rotary Club of Woodend Inc.
The Bank, 75 High Street, Woodend, Vic. 3442
ABN 32 685 225 161 No. A0021518E

Layout & printing by Woodend Copy Centre

For people wishing to submit stories, articles, letters to the publication, simply place the information in the strategically placed drop-boxes. These are located at the Liquor Shop, Collier Office & Business Assist, The Bank @ 75 High Street and Woodend Newsagency.

Circulation: 3050 copies throughout Woodend and district

Disclaimer: The opinions and views expressed by the contributors are theirs alone, and do not necessarily reflect the views and opinions of the Committee of Management, or the Rotary Club of Woodend.

The Committee reserves the right to edit articles for length and clarity.

Committee: Barry Naphine, Ivor Johnson, Claudia Green, Irene Hatcher, Joy Barker and Jane Watters.

Closing date for inclusion of articles for each issue is the 15th of the month prior to publication.

Advertising available

For all bookings and artwork submission please contact Irene Hatcher 5427 3092.

Artwork to email nws@collieroffice.com.au

This newsletter is supported by



ADVERTISERS PLEASE NOTE:

Unless specific dates are given for inclusion - all advertisements will be placed and charged for until notified otherwise IN WRITING.

continued from page 1 ...

residents were the winners: 1st a Mr or Ms McKenna, 2nd Barry Gruar, 3rd Shirley Hartson.

PLEASE NOTE: ANZAC Day commemorative services will proceed as usual, commencing with a street march at 11.15AM, from the corner of Brooke Street and High Street Woodend. See information on page 3 for further details of ANZAC Day services.

On behalf of the RSL Committee and members, I thank everyone for their continued support, as we continue to develop the Woodend RSL.



Advertising Rates for 2008

New advertising rates per month from 1/1/08

All rates include GST & are priced per month.

Business card size (per month)	\$38 inc GST
Eating Out (per month)	\$31 inc GST
Trade Page (per month)	\$25 inc GST
Quarter page (per month).....	\$85 inc GST
Half page (per month)	\$150 inc GST
Full page (per month).....	\$267 inc GST
Insert (of your printed brochure)	\$180 inc GST

Advertisers: Please note - it is in your interest to book and pay for a year in advance, as a 10% discount applies to any full year pre-paid booking.

This now includes to Trade Page & Eating Out sections.

Any existing pre-paid ads will revert to the new rate on completion of the pre-paid period.

Information for advertisers

Any accounts queries can be made to

Joy on 5427 4089 during office hours.

Mail should be directed to: New Woodend Star, C/- The Bank, 75 High Street, Woodend 3442.

Drop boxes for articles are at: The Bank (75 High Street), Woodend Newsagent, Collier Office & Business Assist and Marks' Liquor Shop.

Copies of the publication will also be available.

Woodend Star Publication Dates for 2008

May	Delivery 5th May
June	Delivery 2nd June
July	Delivery 30th June
August	Delivery 4th August
September	Delivery 1st September
October	Delivery 29th September
November	Delivery 27th October
Dec / Jan	Delivery 1st December

Advertisers and contributors are reminded to book in by the 15th of the month with artwork to follow immediately. Changes to advertisements, new advertisements or cancellations should all be made by email or in writing.

Change of function due to hall closure

RSL Hall closed – Woodend Hospital Auxiliary function on April 10th will be held at the Bowling Club.



New Members The Rotary Club of Woodend

Put something back into this great community and be part of a worldwide organisation that helps build goodwill and peace allowing ordinary people to achieve extraordinary things and bring about exceptional change in the world.

Contact Kai 5427 1029

ANZAC Day @ Mt Macedon

continued from page 1 ...

“I would specially invite those who have not previously joined us, to come along this year and experience the early rays of the sun rising over the Dandenongs and lighting up the Mt Macedon Cross”, he said. “Combined with the reflective contributions made by the participating young people of the area, and the moving traditional symbolism of the ceremony, it is a very special experience for those who get there.”

In recent years up to three thousand people have gathered at the Cross for the 45-minute ceremony, and for many it is an event not to be missed. But Dr Donovan said the organizing committee would love to see new faces from the many families moving into the area participate in the service as well.

Dr Donovan, who is also the recently re-elected President of the Woodend RSL, reminded those interested in attending to **rug up, bring a torch, and try to be in place at the Cross by 5.40am**. Those driving should car-pool where possible, park in one of the SES designated areas off Cameron Drive and catch one of the shuttle buses to the Cross – **no later than 5.40am**. Expect delays, respect our SES volunteers and **BE EARLY!**

A **free bus service** will again operate from the Woodend RSL – please look for the timetable to be published in the local newspapers two weeks from Anzac Day.

CASTLEMAINE—GISBORNE

CLEANING SERVICE

CHRISTINE ADAMS, FRYERS ROAD, ELPHINSTONE 3448

Carpet Cleaning Specialists

Duct Cleaning, Window Cleaning, etc.

For all your cleaning requirements

- no job too big or too small -
obligation-free quotes

Tel: 5473 3307 Fax: 5473 3310

Mobile: 0419 006 591

Hesket Primary School

Our plant sale is back on with our new major plant suppliers, Chris & Maree's (Hello, Hello). So no need to go to Melbourne or Bendigo – come around the corner to our lovely setting at Hesket Primary School, located half way between Woodend and Romsey on the Romsey Road, Hesket



Plant Sale

Sunday 4th May, 10 am till 4 pm

Get something for Mum! (Mother's Day, 11th May)

Autumn is the best time to establish plants in your garden, and we'd like to show off our small school and offer quality plants, devonshire teas, cakes, CFA BBQ, face painting, stalls and more

Stall holders wanted – please contact the school on 5427 0330 or Jacky on 5427 0576 / 04717 722 575

Hesket Primary School Plant Sale

Sunday 4th May 2008, 10am till 4pm

A reminder to all about the Hesket Primary School plant sale. New plant suppliers, Chris & Maree's (Hello, Hello!) means that there is no need to go to Melbourne or Bendigo – come and give support to our small local school where a hard working community pulls together to create a family atmosphere for the mutual benefit of students, teachers, families and the wider community. Hesket Primary School is located midway between Woodend and Romsey on the Romsey Road, Hesket.

Autumn is the best time to establish plants in your garden and where better to browse and shop than in the beautiful country setting of our school. On offer there will be quality plants, Devonshire teas, cakes, BBQ and face painting. While you are there visit our magical fairy garden, you never know you may even see a fairy or two!

Make the most of this event to purchase something for Mother's Day. Take the time to visit the school and see what a treasure we have in the local area.

Stall holders wanted – please contact Hesket Primary School on 5427 0330 or Jacky on 5427 0576 or 0417 722 575.

Hesket Primary School, Romsey Road, Hesket 3442

SUBSCRIBE TO THE NEW WOODEND STAR

Do you live outside the *New Woodend Star* distribution area? be sure to receive your copy every month by subscribing. A yearly subscription of 11 issues is just \$27.50. Post to *New Woodend Star, C/- The Bank, 75 High Street, Woodend 3442*.

Name: _____
Address: _____
Phone: _____ Enclosed: Cheque/Money Order for \$27.50

Kyneton Physiotherapy

ROBERT ROUSE

B. App. Sc. (Physio) Member A. Physio. Assoc.

Move Well. Stay Well!

Registered for Comcare, TAC, W/Cover, Vet. Affairs
NO REFERRAL NECESSARY

74 High St., (Corner New St.,) Kyneton

20 years on High Street! 5422 2290

Woodend Neighbourhood Centre

During March we had our AGM and celebrated all the Centre has achieved during 2007. We were able to offer many opportunities for members of our local community to participate in social, hobby, fitness and educational classes as well as provide quality childcare. We thanked our outgoing Committee of Management and welcomed the new Board.

This term we have many old and new classes for you. Please call if you did not receive a brochure with your local papers recently.

Have you thought about training to work in local schools and kinders as an aide? If so study locally – we offer Certificate in Integration Support, run over 3 terms, starting on 10 April – 1 day a week for 5 weeks. We regularly run food safety and first aid, but if you are after something more our Introduction to Hospitality may be just the course for you – it covers food safety, OHS and responsible serving of alcohol.

Like the outdoors? Want to become more environmentally friendly? Our 6 week Introduction to Permaculture could be just the thing. This is suitable for home and work uses and covers everything from soil science and remediation, water capture and storage, garden techniques such as companion planting and ecosystems, design techniques, propagation and more. Book now to avoid disappointment.

Have you thought about joining a book club but...? Now is the time. We hope to start a local club for local people – register your interest NOW. Not sure about reading, but want to write – we are offering a Creative Writing class this term. Come along and discover your creative side. Be guided through the writing process with our experienced facilitator Stuart Reedy.

Do you have a vase you love, but find difficult to arrange flowers or foliage in? Bring your vase to our class and go home with a stylish arrangement.

Children and teenagers have opportunities to express themselves through drama taught by actor Saskia Post. Teenage sewing classes are always popular too, so book now to avoid missing out.

We still offer a wide range of computer classes, from Internet & email, total beginners, office skills, computer accounting and New this term Advanced Excel.

If you are new to the area please drop in to see what we offer, or what you could offer us – we are always looking for tutors and mentors to help local people.

Call into 47 Forest St, ring 5427 1845 or look for details on our website www.wnci.websyte.com.au

Notice of WBATA meeting

The Woodend Business and Tourism Association (WBATA) will hold their next meeting on Thursday April 17th at Braemar College training restaurant, 6:30 arrival 7pm start. (This is a change from the usual Tuesday night meeting.)

As usual the meeting is held over dinner. Agenda includes a key note speaker, an update on work of the Woodend Winter Arts Festival, Council issues and this year's WOOMBA Festival in November, with plenty of time leftover for networking. Cost is \$20 for BATA members and for \$25 non members/guests. Of special note is that for this meeting only, numbers are limited so if you are considering attending please email Cori (President) on felvus@alphalink.com.au as soon as possible or call 0419 338 835 to reserve your place.

If you are interested in WBATA's efforts to promote Woodend generally and would like to know more about WBATA or consider joining please contact the Vice President Peter Lane on 0412 029 409 or email peter@createnow.com.au.

Woodend Visitor Information Centre High Street Woodend

Ph 1800 244 711

WOODEND SELF STORAGE



- Store your business documents, stocks or furniture
- 7 day access
- 33 individual sheds
- Affordable prices
- Insurance available

For any enquiries
please contact
Leonie or Dennis Barker
on **5427 4175**

Regular business card advertisements (90mm x 55mm) are \$38
inc GST per month - book & pay 11 months
and get 10% off.

Joanne Duncan

STATE MEMBER FOR MACEDON

MP

Friends,

At the heart of good governance is honesty & accountability, as well as an understanding of the issues confronting the whole of society.

If you have any concerns you wish to raise, please do so.

Feel free to call me on:

5428 2138



Dear Friends

Road safety remains an important issue in our community.

Last month, I wrote to you about the Victorian Government's *arrive alive!* program that is introducing new ways to further improve road safety and create a safer transport system, safer roads and roadsides, and protect road users.

As part of the *arrive alive!* and Safer Road Program, \$1.35 million will be spent to improve safety along Black Forest Drive, Woodend between Mt. Macedon Road and South Road.

The improvements will include the installation of a wire rope safety barrier, guard rail and reconfiguration of traffic lanes from 4 lanes to 3 lanes.

Many residents in the area have spoken to me about road safety. It is anticipated that these safety measures will go a long way to reduce the chances of serious injury or fatalities along this road.

If you are concerned about road safety in your area, or any other local issue, please feel free to drop in to my office at Shop 13, Aitken Street, Gisborne or give me a call on 5428 2138.

Warm regards,

JOANNE DUNCAN MP

State Member for Macedon

Chiropractor – Mark Brown

- Mark has been practising for the last 6 years in at the Westpac Bank Building, 75 High Street.
- Mark's approach involves massage and stretching of muscles and ligaments before manipulation to provide best results.
- When appropriate, Mark can advise you on exercises to both stretch and strengthen muscles that support the spine.
- Mark has successfully treated problems including shoulder, elbow, wrist, knee and foot.
- Chiropractic can assist in a large range of problems including headaches/migraines, asthma, chronic digestive problems and certain types of neuralgia.

Phone 5427 1456 or 0407 526 403

WARNER'S JEWELLERS

EST. 1912 ~ 4th Generation Jewellers

97 High Street, Woodend 3442

Tel: 5427 1573

**Manufacturing Jewellers and
Diamond Ring Makers**

Stocking: Portmeirion, Whitehall,
Queens, Pimpernel, Royal Doulton,
Cherished Teddies, Royal Sengalor.

TERRY'S GROUND CREW MOWING & MAINTENANCE

0400 909 303

ENJOY YOUR PRECIOUS WEEKENDS

TERRY BARRETT

PO BOX 885 WOODEND VICTORIA 3442

Ladies Luncheon to raise funds

The Rotary Club of Woodend presents a Ladies Luncheon on Friday April 11th from 12 –3 pm. The luncheon will be at 142 Washington Lane, Woodend.

Cost is \$20 per person, which includes light lunch & sparkling wine. To book, call Melissa to provide RSVP and payment, 5427 1578.

Funds raised will go towards a Boardmaker program for children with learning difficulties. Boardmaker is an incredibly flexible and powerful communication display maker, a communication and learning tool containing over 4,500 picture symbols.

It will be made available at the Woodend Library for families, day care, staff, kindergartens and schools.

WOODEND Proud to be Pokie-free



*Let Habitat help make your
house a home*



102 High St
Woodend
Ph 5427 2100

65 Mair St East
Ballarat
Ph 5333 5525

Furniture & Homewares

Open 7 Days

The fencin' fella

- colorbond
- tubular
- timber
- steel picket
- pool

Mini Earthmoving Kanga Loaders

Attachments include:
rotary hoe, soil leveling bar,
4 in 1 bucket, trenchers,
post hole diggers, tipper

SHAUN BARRON

MOB: 0407 232 900 or 5422 3488 AH

TRIPLE



DRIVER TRAINING

Accredited Certificate III and IV Instructor
Servicing Macedon Ranges and Surrounding Areas

Ph. Laurie

5427 1192
0419 005 185

Woodend Senior Citizens

Tuesdays Bingo at 1.30pm. Carpet Bowls at 10am Fridays.
As always Cards on Friday afternoons at 1.30pm. All new
members are made very welcome, come and meet us and
have a cuppa. PS. Seniors are wondering where the sign has
gone from the building?

Norma Richardson

Café Nights includes a
variety of nice meals
& Coffee

Starts at 6pm
Woodend Community
Hall

Sunday April 27th

Contact
Kath Helyar
54273605
Or
Church Office
54296327

Living Word



Trivia Night 2008

This month we will be
holding our annual Trivia
Night.

Come along and join a
table and enjoy the
fellowship of others and fun
associated with trivia. See
how much you know.

A night filled with fun,
surprises, great laughs and
good company and for the
whole family.

We look forward to seeing
you there.



*Living Word meet every
Sunday Evening
for a
Contemporary Christian
Church service*

Woodend Sustainable Living and Green Corps Project Launched

Woodend Sustainable Living Community

On Wednesday the 26th of March the Woodend Sustainable Living Community (WSLC) and CVGT Employment and Training Specialists were pleased to launch the Woodend Green Corps project.

Green Corps is a youth development program that offers young people an opportunity to gain valuable skills and accredited training, and to get paid while contributing to their local community and environment.

A team of ten motivated young people recruited from the local area will be constructing a permaculture and sculpture garden at the new Woodend Sustainability Centre, in Forest Street. The project includes building a mud brick chicken house and runs, compost system, vegetable garden, orchard area and an outdoor area for local artists to exhibit their works. The garden aims to promote sustainable living concepts within the local community. The team will also be involved in a variety of conservation projects in the local area with Newham and Woodend Landcare Groups, Greening Australia, and the Macedon Ranges Shire Council.

Officially launching the six-month project Mayor Noel Harvey said "it's a win-win situation – for the young adults and for the local community".

WSLC president, John Randles insisted that "we need to tread lightly on the planet. We should not exploit the abundant resources of the planet, but instead we should husband them. The Green Corps group will have the opportunity to develop their knowledge of sustainable living and to turn the vision of 'husbanding the earth' into reality". Mr Randles went on to wish the Green Corps team success in the projects and in their future.

The CVGT team leader, Krista Patterson-Majoor said; "we have a fantastic team who are all very enthusiastic about the project and the learning opportunities it provides. We thank the WSLC for providing this opportunity for young adults in the area."

Woodend Sustainable Living Community aims to strengthen the community networks and promote environmentally sustainability within the Macedon Ranges.

CVGT is a not-for-profit unlisted company, providing high quality employment and training services for people who are looking for employment in regional Victoria, Melbourne, Sydney and Tasmania.



"Gee Mum, you smell nice!"

We have so many great Mother's Day gift ideas. Why not spoil her with a selection from our beautiful Sohum range? It's made in Melbourne and smells divine. Start with one or build a set, from \$11.95 to \$39.95. Plus we have jewellery and pyjamas and lots more.



ZAPP2937

Come on in and browse – you'll be inspired.

ZAPPA-do

Bed, Bath and You... and Baby too!

Shop 3, 87 High Street, Woodend. Ph: 5427 1270

Save your wardrobe.
Save the world.



Autumn has arrived-

**Designer knits, skirts, pants & dresses
in store now.**

42 Anslow St Woodend
T 0414 524 423

Hours Thurs/Fri 10-5 Sat 10-2

In front of Cafe Colenso next to the Florist.

Pamela Kell

Remedial Massage Therapist, Level 1 Pilates Instructor

SSNT/AAMT, Workcover accredited

Relaxation, Sports, Remedial Massage

Manual and Lymphatic Drainage

By Appointment

22 Goode Street, Gisborne

5428 1000 0408 093 098

Another great success!

Woodend Lions are very pleased at the results of the 34th Art Show & Sale. Numbers of works have remained at over 400, and certainly attendance was extremely good.

One of those in the community most pleased with the show was Jasmine Green, who has for the second year in a row shared the 16 years and Under prize. Here we see her with three of her entries: *Humming Bird*, *Gorilla*, and the winner, *Stanley Park Falls*.



The other winner was 6-year-old Aarii Rintala, with his watercolour, *Two Possums*. He has also won twice before.

The judge this year was Dr Robert Wilson, Programme Coordinator of the NGV. Although this task is never easy, here are his final awards:

- Best Oil Painting – **Stephen Falzon**
- Best Oil Painting By Local Artist – **John Walsh**
- Best Watercolour Painting – **Julian Bruere**
- Best Miniature Pair – **Carolyn Marrone**
- Best Other Media – **Brian Lawrence**
- Best Sculpture Any Style – **Peter Butterworth**

As always, the opening night was a popular and well-attended night, with plenty of delicious refreshments, courtesy of the St Ambrose catering team, and the volunteers at the bar. We thank John Connor for opening the Exhibition, and John Keating for conducting the auction. Lions would also like to publicly acknowledge the 3 local artists who generously donated their work for this: Nicole Jackson, Stan Perkins and John Walsh.

Similarly, we are grateful to our major sponsors: Macedon Ranges Shire Council, the Johnson Family, Barker Trailers, Woodend Traders, Keating's Real Estate Pty Ltd, and Mrs A.M. Wiber.

But there are many, many other quietly supportive people who helped us out in various ways: far too many to mention individually. **Please know that you are genuinely appreciated.**

And to **the public** who came to see the works: you're essential!

All news items, articles and community news columns must be received by 15th of each month.

Macedon Ranges Visitor Information Centres Local Learning Tour

Black Forest Organic Farm: situated 671 – 703 Black Forest Drive (opposite Macedon Views). The owner, Michael Bikicki gave us a wonderful warm welcome to his Farm Shop. Michael and family, originally from Austria, have created a model organic farm, which produces top quality organic fruit, vegetables, preserves and pickles. We were astonished at his “vege patch” and were invited to sample the Farm’s produce – fresh strawberries, cherry tomatoes, jams and pickles as well as fresh baked cakes. No doubt there will be many return visitors to Black Forest Organic Farm.

Riddell’s Creek Village: A brief stopover and walk to see developments, such as the new bridge over the creek in the middle of town. The bridge is the same as the one recently put in place at the end of Woodend’s five Mile Creek Walk to facilitate walking/cycling to Hanging Rock.

Gillmay Art Gallery: This Romsey Gallery has been

open for just a year. It has a different exhibition each month featuring one or two artists. There is a permanent collection of locally made jewellery and craft for sale. The Gallery offers a wide range of Art Classes and Workshops to support local creative people. There is a magnificent Magnolia Grandiflora in the roadside garden which is 125 years old and is on the national tree register.

Soltan Pepper Restaurant: at 118 main Street, Romsey provided us with an excellent choice of \$11.50 lunch specials – all were delicious and of high quality. The restaurant offers special night deals; for example, Wednesday nights are Oyster Nights and St Patrick’s day features live music. Soltan Pepper is open Wednesday 5pm – late and Thursday to Saturday 11 am – late and on Sunday 9am – 4pm. Phone 5429 3190

Mirkwood Forest Cottages: at 1671 Mt Macedon Road, Woodend. There is a long drive way through the bush, providing a lovely walk, as well as privacy and seclusion for the visitors to the two beautifully appointed cottages. Both cottages are stunningly furnished in a contemporary style with reverse cycle air conditioning and a spa. The property covers 8 acres of beautiful European and native gardens. There is a swimming pool and tennis court and walking tracks up Mt Macedon’s northern slopes.

Thanks to Nigel Heyward for his report on the February Local Learning Tour

Bradley's

Curtains + Blinds

New showroom now open

Mon to Fri 9 - 5.30 + Sat 10 - 1



t 5427 2361 fx 5427 1019 72 High Street, Woodend VIC 3442

www.bradleyscurtains.com

BGE

Joinery Quality you deserve

• Kitchens • Shop fittings • Bars

BRAD ELSE

Mob: 0412 355 548 Ph: 5422 2517

Factory 2/27 Redesdale Rd., Kyneton

Visit our Showroom | 66B Mollison St, Kyneton
| 1am - 5pm Fridays or by appointment

Loddon Campaspe Community Legal Centre

From March the Loddon Campaspe Community Legal Centre and Victoria Legal Aid (Bendigo) will jointly provide a new Free and Confidential Legal Service in Kyneton for residents of Macedon Shire. Please help us to promote this service to readers of your publication.

Frances Gibson, Solicitor at the Loddon Campaspe Community Legal Centre notes:

“Research on legal needs in the Macedon Ranges area shows that there is a significant need for legal advice and assistance for people who can’t afford private lawyers.

It is often difficult for people to get legal advice on issues such as debt, family violence, discrimination, car accidents, Centrelink, employment, victims of crime, family and guardianship. This advice service will assist the most disadvantaged and vulnerable members of the community.”

A lawyer will be available every Monday afternoon at the Cobaw Community Health Centre, 47 High Street, Kyneton to assist people with legal issues. Specialist Family Law appointments will be available on the first Monday of each month. To see a solicitor, Macedon residents can phone Toll Free: 1800 254 500.

Macedon Ranges Choristers

The Macedon Ranges Choristers meet on Tuesday evenings at the Sunbury Leisure Centre. The choir sings a great repertoire, with a wide variety of music. Anyone who would like to enjoy singing is welcome to join. There are no auditions. Performing in community events is encouraged, but not mandatory. Various performances will be scheduled for later this year. Musical direction is from Jonathan Walker and Linda Ceff. For further information, phone Stephen Bowler on 0439 772 711.

Lachlan Fleming



CARPENTRY

REGISTERED BUILDING PRACTITIONER

0401 499 898

EXTENSIONS RENOVATIONS
ALTERATIONS

FOR LEASE

Upstairs Office Space for Rent

Approximately 60 square metres

Historic Piper Street

in Kyneton

\$165 per week

Phone: 5427 3892 for information

Jack's story

Our son Jack Simpson became seriously ill during Easter 1999, and in 2001, suffering Multiple Sclerosis, Hodgkins, lymphoma and seizures. He was a normal eight-year-old twin boy in Grade 2 at St Ambrose Parish School. As a result of his illnesses Jack suffered intellectually and physically and was confined to a wheel chair with several bouts of paralysis. He endured intense rounds of chemotherapy as well as weekly Interferon injections for the MS. It was a very difficult life and the prognosis for the future was bleak at best.

I am happy to say now, more than six years later, that Jack is well and has recovered to such an extent that he is able to write creative and imaginative stories, run, climb and do most of the things he used to do. Jack has astonished his doctors at the Royal Children's Hospital and they are delighted with his progress, so much so they are following

him with great interest. The story you are about to read is presented with much joy because Jack had lost both the ability to hold a pencil and his intellectual competency: these are now restored. Jack is now a student at Sacred Heart College in Kyneton and enjoying a wonderful life.

Submitted by Sharon Simpson

Jack's Story: The Prince Charming

"There was Prince Charming in food technology. His smile went from one side of his face to the other. His face looked like it was carved by angels. He defeats the ogres and trolls, and cardboard castles. "Faster Trottsie", said Prince Charming as he rode towards the mote of fire and he killed the bad people because they were teasing him.

"There, take that! You don't like me, I don't like you."

He found a fairy's fountain cake and dirty fairy floss. His mum cried at his dirty face and cleaned him with a rag.

Prince Charming was cutting the cake with a sharp knife. The knife slipped and Prince Charming yelled, "Oww!! Blood!". Blood spurted everywhere. The King comes to his aid and saves him.

Prince Charming burnt himself on hot stuff. Third degree burns, bad and awful. He wasn't wearing an apron. Hot water poured onto him while he was washing the dishes. His long, lovely hair got steam on it and the curls fell out.

His hair was long straggly and straight. He wasn't really that charming anymore. He tried to get friends but he felt that none of them were as pretty as he was, but really they thought that he was a show off and didn't really look as good as he thought he did. He wanted everyone to look at him but they threw cheese burgers at him. He started to cry because his beautiful face was dirty and Mum wasn't there to help him.

The Prince Charming is going to fight back at the ones who threw pies at him. They threw hot water at him. Prince Charming found a blow torch in his cape. He thinks that he is good but he cannot use it, he tries to scare them with it by pointing it at them, but they turn around and kicked him in the head and back and ran off laughing.

Prince Charming was defeated! Knocked out, fallen, he needs something else in his life.

Then! Jack Simpson came into Prince Charming's life and saved him. Jack Simpson puts him on the straight and narrow; put him on the right track. This Jack punches all the bad guys and they all ran away.

The King and Queen knighted Jack Simpson. Jack became 'Sir Jack Simpson' the great. He became the leader of the Black Knights of Australia, with Prince Charming as his assistant. Both of them had many great adventures saving the people of Woodend and having great big parties.

They lived happily ever after. THE END"

Compact Discs Piano Accompaniments Church Organ Multitracks

Community Events
Examinations
Aural Training
Music Theory
Compositional Assistance
Music Typesetting

Mount Macedon Music Studio



Music Performances

for weddings and other special events.

Music Tuition

Term Two Lessons commence 7th April,
for a range of instruments and voice.

Practice sessions available on Grand Piano or Drum kit.

Group Music Workshops

include Ensembles and Solo Performances,
Theory and Aural Development,
for Instrumentalists and Singers.

Contact the Director,
Mount Macedon Music Studio

Linda Ceff

M.Mus, B.Mus (Hons), APRA & VIT reg.

phone: 54261264 or 0437866030

email: mountmacedonmusicstudio@bigpond.com

Musical Expertise
Ensembles
Classical Music
Jazz Music
Popular Music
Performances
Print Publications

Tuition Correct Technique Fun Education Workshops Concerts

When tomorrow never comes

By Samantha Parker

It is with deep sadness and a tinge of irony that the last article I have chosen to write for the *New Woodend Star* is to honour the memory of a very close personal friend of mine, Victoria Croft – better known as “Vicky”.

Many worlds were turned upside down on Saturday 29th February, 2008 as we all waited for a tomorrow that never came. If one is to synchronise a friendship circle, my own personal account is a mere fragment of a number of places Victoria had on her list to visit, yet sadly never made it to. We had arranged to meet on Sunday 1st March, as Vicky offered to pick up my son’s books from school and make a visit to our new home in Werribee. It was so typical of Vicky, always thinking of other people as she offered to save me the drive.

Casually checking the time Sunday morning, I dialed her number wondering why she hadn’t called. I’d put off calling thinking that I would talk to her tomorrow. I’ll never forget hearing the haunting words of her son Andrew “I’m sorry Vicky passed away yesterday”, as he spoke of the tragic circumstances surrounding her death, with her 12-year-old son Dillon finding her body. Both boys acted with a maturity beyond their years as they mirrored the reflection of their sole source of strength – their mother.

Death is inevitable. It will happen to us all, yet when someone close to you dies suddenly, the reality of life and living in the moment is reawakened to extreme proportions. I remember crying unashamedly as I went through my daily rituals – all the while living a paradigm reality as her little Filipino face graced through a trail of memories in my mind’s eye.

The dressing gown that she gave me for my birthday stood all alone in my wardrobe. Its tie was missing and fluffy balls were gathering, but I now realised that it would probably hang there forever. Choking back tears I remembered how I had forgotten her last birthday. I searched in vain for a necklace that she had brought me which had broken and been misplaced in the move, as all of a sudden insignificant things became items that I couldn’t live without.

I lay awake that night thinking about her two children and how much she had loved them, working as hard as she had to give them a better life. Holding my own children extra close as we all drifted off to sleep, I felt a sense of how truly precious every single moment is and that life can be gone in the blink of an eye.



Vicky was a dedicated employee with the Department of Human Services for almost 16 years serving the community, a devoted mother and loving friend - now just like the sun fading into the twilight, she was gone. Instead, a sparkle illuminated itself leaving traces of magic everywhere she had been.

The most treasured moment I can recall is an excited phone call from the top of Mount Macedon. The familiar accent yelled through the phone as if a matter of life and death, “Samantha, Quick, come up to the Mountain, it is snowing”. “We won’t make it up there”, I remember saying, only to hear “Yes you will, just get in the car, come on – quick you will miss it – c’mon”. All the way up I was thinking to myself “Bloody Vicky, how on earth did she make it up the mountain” as the kids and I drove at about 5km an hour slipping and sliding, dodging emergency vehicles all the way, smiling together at our courageous adventure. There she was with Dillon laughing and smiling with her new toy, a video camera.

We wandered through the snow as the kids built ice castles and hurtled snow balls. I walked the long snowfields in a dreamland watching the endless footprints melt away as the snow started to fall. All the while, unbeknown to us Vicky was capturing our escapades on camera. Sadly, she forgot to change the tape and it ran out. She had a habit of doing that.

I sit here now typing away and have only these few paragraphs to sum up years of friendship. How can I describe to anyone the lonely moments I felt that were eased by her presence, the fact that she would never come over without a jug of orange juice, cake or biscuits. How the kids and I would laugh at the dinner table as Blake would tell us how Dillon would show him proudly how everything in his lunchbox was brought from Aldi. Nor could I fail to mention the fact that she made the best boiled Christmas fruitcake in the world, except it made all who ate it fart for days. She was truly one of a kind.

Neither could I forget her slipping me \$50 on more than one occasion to help out with groceries. Shared dreams of building a house and many crazy notions on how we could earn extra money to make life a little easier were common topics of conversation, as were our many wonderings about love and life spoken like adolescent teenagers. Our 15-year age gap never seemed to make a difference.

If I could sum up friendship, I would put Vicky at the top of my list as the most loyal, loving person who accepted others “just as they are”. She saw through my faults to see the rawness and the pain underneath, teaching me to reserve judgments on others through understanding my own actions.

Our last moments were spent together in Church praying for something more than the struggles that come with raising children alone. I saw a sense of peace in those wise eyes that I had never seen before, as she had finally found solace away from the economic pressures & the stress of everyday life. Instead of a life partner, she found a deep acceptance of who she was and an unconditional love of humanity reserved only for angels.

Vicky died on February 29, 2008 of a brain tumor. No one knew that she was terminally ill, neither did Vicky. My world was turned upside down, yet there was no

GARAGE DOORS

**ELECTRIC GATES • SOLAR GATES
SELF OPENING GLASS DOORS**

Ken Ross

0427 661 543 5422 7507

Central Highlands Doors & Gates

Serving Kyneton & Woodend

comparison as I sat at her funeral and watched her 19-year-old son Andrew and 12-year-old son Dillon bury their mother.

As Andrew so eloquently put it, Victoria may have only been small, yet she was taller than the mightiest of people as she passionately advocated for those who were disadvantaged. An unsung angel who will be missed more than she could have possibly known. Sometimes tomorrow can be too late.

So tell that someone that you love,

Just what you're thinking of...

If tomorrow never comes....

Andrew and Dillon have a long road ahead of them and wish to stay together with Andrew applying for Guardianship of his little brother. Both of them extend a sincere thankyou to the broader community for the overwhelming support, love & compassion that has been offered to them.

If you would like to help alleviate financial struggles for Andrew & Dillon, deposits can be made at the Commonwealth Bank in the account name of **Andrew Keithbeard**. These will go directly to assist with rental costs, groceries, utilities and general day to day living expenses.

NORTH CENTRAL ACUPUNCTURE & CHINESE MEDICINE

仁
心
仁
術

Gina Pilven

BaHSc: Chinese Medicine

Acupuncturist

Chinese Herbalist

Health Rebates Apply*

**Westpac Bank Building
11/75 High Street, Woodend**

0405 467 418



Kirsty Nuttall

**MACEDON RANGES
PICTURE FRAMING SERVICE**

By appointment only
Phone/Fax: 5427 3511
Mobile: 0417 337 857

A Country Fair with a difference

The Tylden Primary School Annual Fair and Vintage Tractor Pull is almost here again – and now in its 11th year it just gets bigger and better! This year the Fair will be held on May 10th. This Fair is unique because it combines the Vintage Tractor Pull with an all round fabulous day that has something for everyone. It is wonderful to see so many grand old tractors, trucks, cars and steam engines, put on show for all to see! All the tractors are pre 1955 which includes a robust “1959 Super Seventy Chamberlain” which often takes out the winning trophy for pulling a sledge the furthest in the Chamberlain Class with Ross Hanson at the wheel. Other tractors might include a “Farmall H”, “1945 LA Case” or “E27N Fordson” and a wonderful early century hay baler in full working order showing how it was done all those years ago! Come along and witness these amazing pieces of machinery in action whilst sampling some of the fine cooking and country tucker on offer.

The fair is a great example of what Tylden Primary is all about.....students, parents and teachers all working together to create a better school. Whilst the Tractor Pull is taking place there will also be all sorts of stalls like fresh produce and cakes and preserves plus plenty of children's activities and amusements including a 7metre rock climbing wall, a giant crane, chook lotto, a magician, and football clinic for kids! Most of the funds raised will go towards the ever growing costs of upgrading computers, sporting equipment etc. for the school whilst a percentage will also go towards the setting up of a fully equipped kitchen for the children where they will learn wonderful culinary skills in a hands on kitchen environment as part of their curriculum – a fantastic initiative to not only develop their skills but also to encourage healthy eating habits from the vegetable garden to the kitchen!

Many of the children enrolled at the school are from farming backgrounds and despite the townships small size, there is a wealth of community support and spirit.

The fair will take place on Saturday 10th May at the Tylden Primary School in Tylden commencing at 10.00 am and finishing at 3.00 pm. For further enquiries about the Vintage Tractor Pull please contact Ross on (0428) 176 996 or regarding the fair please call the school on 5424 8244.

All news items, articles and community news columns must be received by 15th of each month.



Macedon Ranges

**Real Estate Specialists
Open SEVEN Days**

108 High Street, Woodend

Phone (03) 5427 2277

www.connallys.com.au

Eating Out, In & Around Woodend

The Bentinck of Woodend

CONFERENCE - WEDDING - RESTAURANT

RESTAURANT NOW OPEN

Dinner

Thurs - Sat from 6.30pm

Sunday

Breakfast from 8 am

Lunch from 12 pm

Afternoon Indulgences from 3pm

The Bentinck

8 Carlisle Street WOODEND VIC

Ph: 5427 2944

Book Now for a unique
dining experience

Not Just Fudge

126 High Street,
Woodend

Home-made Fudge,
Natural Ice Cream, Coffee,
Tea, Herbal Tea, Milk & Thick
Shakes, Cakes, Sandwiches,
Freshly Squeezed Fruit &
Vegetable Juices

Ph: 5427 2210

Fax: 5427 2880

KYNETON BOWLING CLUB

Newly opened - our beautiful dining room lends itself to all celebrations. Our Chef prepares wonderful culinary delights using superb fresh produce.



Lunch: Tues - Sun 12pm - 2pm

Dinner: Mon-Thurs 6pm-8.30pm, Fri & Sat 6pm-9pm

Bookings essential

Phone: 5422 1902

Pot 'n Parma night every Tuesday for only \$12.50!

(or a glass of house wine)

Mollison St, Kyneton

Small Eating Out advertisements (65mm x 43mm) are \$31 per month - book & pay for 11 and get 10% off.

Schatzi's Frank & Rose
Gorlitz

Open 7 Days

8am till late

breakfast, lunch & dinner

For Bookings

Ph/Fax 5427 4447

Mobile 0403 423 537

"Where Lovers of Food Eat"

* FAB FOOD
* FUNCTIONS & CATERING
BY ARRANGEMENT

Bookings Essential

BYO wine only

Light Snacks Mondays

Free entry for

Macedon Ranges residents

Tel: 5427 0295

Large range of Australiana Gifts

Hanging
Rock
Café &
Country
House

Regular business card
advertisements (90mm x
55mm) are \$38 inc GST
per month - book & pay 11
months and get 10% off.

Holgate Big Red - Best Beer Brewed in Victoria

The team at local Woodend brewery, Holgate Brewhouse has been proud of the many medals their beers have won over the years at the Australian International Beer Awards (AIBA). But in 2008 they have gone one step further, with the Holgate "Big Red Lager" winning the Premiers Trophy for the highest scoring Victorian brewed beer. "This is no mean feat" said head brewer and founder Paul Holgate. "The AIBA is the 2nd largest professional beer judging event in the world with over 1000 entries from 44 different countries".

The Holgate Brewhouse "Big Red Lager" is a malty Octoberfest style lager available only on draught at Holgate Brewhouse at Keatings Hotel in Woodend. And for a limited time it can also be purchased in "clean skin" takeaway packs over the bar at Holgate Brewhouse.



HOLGATE'S BAR & RESTAURANT

Microbrewery Hotel with cosy open fires, stained glass windows and friendly atmosphere. Award winning local beer. Delicious meals including house-made bread, pasta and desserts. Function room and stylish accommodation now available.

Open for Lunch Tues-Sun. Open for Dinner 7 Days

79 High Street, Woodend

Ph 03 5427 2510



GISBORNE PEAK WINES



Short Road, Gisborne South

Wonderful wines &
wood-fired pizzas

Casual, fun & friendly. All weather venue

Tel 5428 2228

www.gisbornepeakwines.com.au



victoria
HOTEL

WOODEND

Bistro

Open 7 days lunch & dinner
Daily blackboard specials
Macedon Region wines, open fires.

Bar

Counter meals daily
Fridays tradesman's lunch — \$10 pot & parma
Match your wit against "Barry"
Digital video jukebox on plasma screen

Function Room

Available 7 days
Private parties, meetings & celebrations
Seated dining for up to 80 guests
Private bar, open fire
Balcony views of Mt Macedon

Bookings 5427 2721

67 High Street, Woodend

www.vicwoodend.com.au



MOUNT MACEDON
WINERY

a great place to be

5427 2735

433 Bawden (Douglas) Road, Woodend / Mt Macedon
Mon-Fri 12-4, Weekends 11-5
www.mountmacedonwinery.com.au



Kyneton Ridge Estate
MACEDON RANGES

Open Weekends
tastings • pizza • coffee

Wine crafted with pride.

Cellar Door

*Open Saturday, Sunday and
Public Holidays 10 am to 6 pm*
Wine tastings
Delicious pizza
& coffee

Phone: 5422 7377

Kyneton Ridge Estate
517 Blackhill Road, Kyneton
enter via Halloran's Lane
www.kynetonridge.com.au

"Magnificent" Art MAD Gallery & Café

19 High Street, Lancefield

Tel: 5429 1432

Web: www.madgallery.com.au

Open everyday 10am – 5pm

We're proud of our coffee and promise you
the best coffee around, or your money back!

12 April: Frencham Smith live folk duo 7pm, \$20



Rock View Homestead
Receptions & Functions
Ph: 5427 2076

Restaurant, Roasts & Local Wines
Sunday lunches available pre-booking only
*On Mt Macedon Rd, between Braemar College
& Straws Lane*

5427 2076

**All news items, articles and community
news columns must be received by 15th
of each month.**

WOODEND
Proud to be Pokie-free



LAW OF KARMA

It's functioning,
its effects,
its relevance today



An evening with Sunanda

SUNANDA is an acclaimed exponent of Vedanta, the ancient philosophy of India. Her list of prestigious audiences over the past twenty-five years includes Young Presidents Organisation, Harvard University, Indian Chamber of Commerce and International Rotary Conferences. As a mother and grandmother, Sunanda's clear and powerful presentation of ancient wisdom in contemporary thought appeals to a broad section of the community. Sunanda co-manages the Vedanta Academy (India) which offers three-year residential courses for students from countries the world over. All profit from the evening's discourse will be donated to the Academy.

Details

Friday 25 April (ANZAC Day) at \$50 per person
Wu Lin Retreat – 47 Sherwood Court, Lancefield
(4.5 kms north past Lancefield on the Tooborac Road, refer to www.jamessumarac.com for directions)

Evening schedule

6.00pm

Registration

6.30pm – 7.45pm

Lecture: 'Law of Karma'

8.00pm – 9.00pm

Vegetarian Dinner

Bookings/Enquiries

Kym & Andrew Oliver

Phone: 5429-2134

Mobile: 0413 744 860 / 0447 778 884

Email: info@caitanyayoga.com.au

Web: www.caitanyayoga.com.au

Philosophy in Lancefield

In April 2007, the internationally eminent philosopher Swami Parthasarathy visited Lancefield, delivering an evening lecture to capacity audience at Wu Lin Retreat. This year, Swami Parthasarathy's daughter/disciple – Sunanda, will deliver a one evening lecture on Anzac Day, Friday 25 April.

Sunanda was introduced to Vedanta, the ancient philosophy of India, at the tender age of three, spending the next 18 years in an ashram (monastery) setting with her father. Now in her early fifties Sunanda has been addressing diverse audiences across five continents for the past twenty years. As a mother and grandmother, Sunanda's clear and powerful presentation of ancient wisdom in contemporary thought appeals to a broad section of the community.

All profits from the evening will be donated to the Vedanta Academy – a learning institute in India, founded by Swami Parthasarathy and co-managed by Sunanda. The Academy educates young men & women throughout the

FAIRHURST CONVEYANCING

For all your

Property Transfers

Ring Sue Fairhurst on

5427 2382

27 Urquhart Street, Woodend

MVCA & AIC



**Total
Financial
Solutions
Australia**



*Helping you save
for a*

“Rainy Day”

Bob Nixon

B.Com., Dip.Ed., Dip.A.I.I., Cert. IV Fin. Plng., F.A.F.A.

**Authorised Representative,
Total Financial Solutions Australia Pty Ltd**
ABN 58 003 636 968 AFSL No.246545.

Shop 10, 34a Hamilton Street. Gisborne Vic 3437

Ph: 03 5428 0123

Fax: 03 5420 7710

E: bobnixon@netcon.net.au

W: www.bobnixon.com.au

world on the principles and practice of Vedanta philosophy.

Kym & Andrew Oliver spent over three years studying the knowledge of yoga at the Vedanta Academy and without doubt have benefited immensely from that study and experience. They hope to express their gratitude and share with others a brief glimpse of this profound knowledge on a technique of living.

The cost of the evening lecture is \$50 and includes a scrumptious vegetarian meal. If you are interested in attending the lecture on Anzac Day contact Andrew or Kym Oliver on: (ph) 5429-2134 (mob) 0413-744-860 (e) info@caitanyayoga.com.au. Seating is limited so be sure not to miss out.

**All news items, articles and community
news columns must be received by 15th
of each month.**

SOLAR DIRECT

- Solar Hot Water
- Grid Interactive Solar Systems
- Stand Alone Power Systems

Ph: 1300 55 77 98

Mbl: 0411 269 489

Lancefield

BodyMinding
alexander technique: an education for living well.

Alexander Technique

Reduce, manage or eliminate **stress headaches, muscle and joint pain**. The Alexander Technique addresses the underlying problems and puts you back into control for yourself.

Margaret McGill has been teaching **Alexander Technique** for more than 20 years.

Contact **Margaret** on **5428 6461** for further information.

An invitation

The Graduate Union of the University of Melbourne would like to establish a Chapter in the Macedon Ranges. The Graduate Union came into being in 1911 when a group of graduates wishing to maintain the friendships formed during student years began a graduates club. Today the Graduate Union comprises both a postgraduate residential college (Graduate House) and a private Club for graduates from all Universities (University Graduates Club).

Representatives from the Graduate Union Council, would like to meet with interested prospective members at Flavours Restaurant, Woodend on Monday 21st of April 2008 at 7:30pm for drinks and nibbles to discuss how the Graduate Union can best serve its members in the area.

If you are interested in joining the Graduate Union - Macedon Ranges Chapter - please register your interest with Mrs Glenda Fisher, a member of Graduate Council and a Macedon Ranges resident, either by telephone on 5427 1422 / 0418 563 692 or email gfisher@ceo.melb.catholic.edu.au or Mrs Lyn Weston at Graduate House on (03 9347 3428 or email sec@graduatehouse.com.au by April 12th, 2008.

Submitted by Glenda Fisher

CHINKA STEEL CONVEYANCING
FOR ALL YOUR
PROPERTY SALES AND PURCHASES

RING CHINKA ON
03 5427 2477

74 HIGH STREET WOODEND 3442

Friends of Macedon Ranges Libraries

Members of FOMRL joined other community members and colleagues to farewell Lesley Attard at the Woodend Library on 7 March. Lesley has been library manager at Woodend since 1990. She will be greatly missed by the Woodend community and in recognition of her work Bill Holmes, treasurer and vice president of FOMRL Inc, presented her with a Readings Books and Music gift voucher.

On 27 February youth literature advocate Agnes Nieuwenhuizen gave a most informative session at the Woodend library. Her 'Tips and Top Titles to encourage teenagers (young adults) to read' list can be collected from any of the Macedon Ranges libraries or sent by email from

Cancer Awareness Community Forum: Free Admission

Bowel and Prostate Cancer

Specialist speakers will present the latest information on bowel and prostate cancer.

Following the speakers, there will be an opportunity to ask questions of the panel in a relaxed environment with a light supper to follow.

Men and women, family and friends are all welcome to attend.

Wednesday 16 April 2008

Macedon Ranges Health Services

Gisborne Bowls Club

2 Kilmore Road, Gisborne

Seat bookings are essential.

For further information and bookings call: 131 120

Cancer Information Support Service

RSVP Friday 11 April


The MORTGAGE GALLERY

Access to over 30 Lenders!

Home Loans
Car Loans
Personal Loans
Equipment Finance

Matthew Roulston
0403 955 907

Ph: (03) 5422 1633 Fax: (03) 5422 1644
mattroulston@themortgagegallery.com.au



Matthew is a professionally trained Finance Manager with over 10 years in the Finance Industry.

In this time Matthew has assisted hundreds of clients find the right financial solution for their needs.

With access to over 30 lenders including all the major banks, he is sure to find the right loan for you.

The Real Advantage

sheilad@ozemail.com.au

Again we have been lucky to receive many new (pre-loved) books for our next stall at the Woodend market. Come along on Sunday 20 April and pick out some good reads whilst helping with our fundraising.

There are now extended hours at the Woodend library. No more closing for half days Tuesdays or lunch time. In total 41 hours per week to select and return your books.

Hours are: Monday, Tuesday, Thursday and Friday 9.30-5pm, Wednesday 9.30-6pm and Saturday 9.30-12.30pm. No excuses for not visiting and joining the newly refurbished library.

EpiGenetics

Healthy & Ageless Naturally!

- **Preview sale – up to 50% off** Fair Trade gifts and furniture
- Hand-carved, sustainable hardwood timber
- Come in and view our new room
- Animal bookcases and drawer sets were \$160, now \$120 each

Shop 8/81 High St Woodend

Ph: 1300 737 146

Woodend Prospecting Club


Again the weather was hot the bush cool and the Lederberg River empty. It was a great day for the Woodend Rockheads who held their first inaugural dig, and a resounding success it was. We met at the Community Centre for car pooling, some came from Melbourne, others were locals. It was a great day and started with some colour being seen in the pans.

After some effort and looking along the river we found some small gold nuggets and rubies – very exciting stuff. Stopped and had some lunch then into it again. Later in the afternoon people had to go home to get ready for work.

Maybe next time will be the big strike. All are welcome to attend, however we need some more local input with a reconnaissance to the next site.

Please call if you are able to help, 0414 893 446

Submitted by David from the Woodend Prospecting Club



**Home
Kitchen
Giftware
OPEN 7 DAYS**

**Cuisinart
Electrics
in store
this month**

Blue Orange Concepts
Shop 2, 130 High Street, Woodend. Ph 5427 4500

Volunteers needed

If you have a spare hour a week please consider offering your time to assist a local family with preschoolers. We have families in the area who are seeking volunteers that can visit them in their homes for a chat, to help them get out and about and to share local knowledge about what services and facilities are around for families. Some of the families are seeking to be matched up with parents who have preschoolers themselves, while some families are seeking just an adult friend or a surrogate grandparent figure as they have left their family and friend support systems behind when they have moved to the area. Volunteers are required to get a Police-Check, a Working With Children's Check and undertake a 2hr basic training session. Ongoing support and training is offered as required. Please call Henni at Cobaw on 5421 1631.

Macedon Ranges Bridge Club

The Macedon Ranges Bridge Club now offers three opportunities each week to play duplicate bridge; the most popular card game in the world. We meet on Monday afternoon at 12.30 (for 12.45 start) and Tuesday evening at 7.15 (for 7.30 start) in the Woodend Community Centre Hall on the corner of High and Forest Streets. We also offer a social gathering at the Woodend Tennis Club rooms on Thursday afternoon at 12.30 (for 12.45 start). All sessions run for about 3 hours and include a break for tea/coffee and biscuits, and all visitors are made to feel very welcome.

If you are interested in playing but need to brush up on your bidding and card-playing skills, or wish to start learning from scratch, we are also conducting lessons on Tuesday evening from 7.30 starting in April. You can contact the following if you would like any further information; Rex Fox (President) on 5424 1569, xrconsult@hotmail.com, or Peter Wells (Secretary) on 0407 302 308, peter.wells@sci.monash.edu.au, or visit our website at <http://www.mrbc.asn.au>



**RIVERWOOD
GROUP**

Accountants, Advisors & Planners

Office Locations:

111 High Street, Woodend

Ph: 03 5427 8000

2/19 Bourke Street, Kilmore

Ph: 03 5782 1273

email: admin@riverwoodgroup.com.au

website: www.riverwoodgroup.com.au

Riverwood Group can offer a *Total Financial Solutions* package for you and your family. Take a look at some of the services we provide:

Taxation

All your taxation requirements to suit individuals and small businesses.

Investments to Create & Protect your Wealth

Managed Funds, Indexed Funds, margin Lending and more

Planning for Retirement

Allocated Pensions, Centrelink Benefits and Payments

Stockbroking

Recommended lists, broking facility available, share updates

Superannuation & Rollovers

Advice, placements, Self-Managed Super Funds and Eligible Termination Payment Advice

Other Services

Home & Investment Loans, Business Loans and Leasing, Income Protection, Life Insurance, Professional Indemnity, Estate Planning and more.

Woodend Aerial Photos

Are you interested in seeing Woodend from a bird's eye view? In December, photos were taken from the crane at Woomba. They can be seen at the Woodend Neighbour Centre Website www.wnci.websyte.com.au (click on Woomba) for people who are interested and while you're visiting that site, have a look at the things that the Neighbourhood Centre has to offer.

'Special Events' is proudly sponsored by the 19th HOLE SHOPPING CENTRE

Upcoming Events and Meetings

April 2008

- 10 WOOMBA Meeting at Woodend Bakery Cafe, 6.30 pm
- 11 Ladies Luncheon - Rotary - phone 5427 1578
- 12 Woodend Autumn Carnival, hosted by St Ambrose
- 16 Lions Market
- 16 ABA Meeting
- 16 Cancer Awareness Forum, Gisborne see page 25 for info
- 17 BATA meeting at Braemar - phone Cori 0419 338 835 to book
- 19 Spotlight Walk at Hanging Rock
- 19-20 Artanica event at Duneira Mt Macedon
- 20 BMC 100km Classic mountain bike ride, ph 5427 2662
- 21 Graduate Union function at Flavours, 7.30 pm ph 5427 1422
- 25 Anzac Day, Dawn Service Mt Macedon, March & Service at Woodend in morning see pages 1 and 2 for info
- 25 An evening with Sunanda - Wu Lin Retreat, Lancefield page 14 for info

May

- 4 Heskett Primary School Plant Sale
- 10 Tylden Primary School Fair
- 11 Mother's Day
- 18 Lions Market

June

- 6-9 Woodend Winter Arts Festival, www.woodendwinterartsfestival.org.au



<i>Ian Marks Liquor</i> 5427 3961
<i>Blue Orange Concepts: homeware</i> 5427 4500
<i>Kosmac & Clemens: optometrists</i> 5427 4577
<i>Woodend Pizza & Pasta</i> 5427 3777
<i>Coles Supermarket</i> 5427 2377
<i>Collier Office & Business Assist and Woodend Copy Centre</i> 5427 3092
<i>Pets Haven</i> 5427 3603
<i>Mitre-10 Woodend Hardware</i> 5427 2314
<i>BP Woodend</i> 5427 2248
<i>Target Country</i> 5427 4366
<i>Macedon Ranges Travel Services</i> 5427 4777
TBA
TBA
<i>Woodend Cycles</i> 5427 2662
<i>Salvation Army Family Store</i> 5427 4421
<i>Loose Change Bargains</i> 5427 4466
<i>Bodywise Underwear</i> 1300 66 17 66
<i>Australia Post</i> 5427 2600
<i>Jasper Art & Handwork Supplies</i> 5427 4455
<i>The Spa Beauty Therapy Centre</i> 5427 3322
HIGH STREET SHOPS
<i>Color Me Cooper: clothing/gifts</i> 5427 1454
<i>Chelleon For Hair</i> 5427 3246
<i>Not Just Fudge</i> 5427 2210
<i>RT Edgar Real Estate</i> 5427 1222
<i>Woodend Bakery Cafe</i> 5427 3434

Australian Breastfeeding Association,
Heather 5427 2398
Daylight Masonic Lodge, 5427 2480
Friends of Macedon Ranges Library,
Chris/Bill 5427 2469
Garden Club 5427 3834
Living Word Christian Church 5429 6327
Historical Society, Courthouse, 5427 2523
Macedon Ranges & District Motor Club, 10 Webb Cres,
New Gisborne 1st Wednesday each month 8pm
Macedon Ranges Animal Aid, Buffalo Sports Stadium,
5427 1752
Macedon Ranges Bridge Club, 5427 4440
Macedon Ranges Families of Children with Disabilities
Support Group, 5427 3365
Macedon Ranges Residents Assoc. 5427 1481 or 5427
2651
Macedon Ranges Communicators (ITC), 5427 2669
Macedon Ranges Photographic Society, 1st Tues of
month, Ron Mathews 5427 3284
Macedon Ranges Social Club (activities for singles
over 35) phone 5427 1247 or 9744 2697
Neurological Support Group "Contacts", Woodend
Community Centre
Panic & Anxiety Group, 5427 8256
Parents & Carers of Children with Special Needs,
Woodend Community Centre

Probus, 5427 2003
R.S.L., Anslow Street 5427 3122
Red Cross, 5427 1260
Rotary Club of Woodend, meetings weekly at
Holgate's Leadlight Room, Kai 5427 1029
St. Mary's Guild, 11am, 4th Wednesday of month
St. Mary's Street Stall, 9-12 noon outside Woodend
Newsagency (2nd Sat of the month)
Woodend & Five Mile Creek Landcare Group,
Jo 5427 1909 or Doug 5427 0666, 3rd Tues
Meeting, 4th Sunday Working Bee
Woodend Angling Club, RSL Hall, 5427 2395
Woodend Art Group, Railway Station, 5422 6172 or
5427 1659
Woodend Bird Observers, 3rd Sat of month, Bruce
Donaldson 5427 0536
Woodend Business & Tourism Association, Cori
5427 3434, 2nd Tues of month (BATA)
Woodend Lions Club, Meetings 2nd/4th Wednesday
each month, phone Janelle Robbins 5427 1704
Woodend Model Railway Club, Buffalo Stadium
Woodend Pony Club, 5427 0487
Woodend Senior Citizens Club, Comm. Centre
Woodend SES Training Nights, Urquhart St
Woodend Winter Arts Festival Inc.,
Jacky 5427 1560

CLUBS: PLEASE KEEP THESE DETAILS UP TO DATE

Daylight Savings ends

– *it's smoke alarm time!*

Only a working smoke alarm saves lives.

When you change your clock you should also change your smoke alarm battery.

The CFA recommends that all Victorians should replace your smoke alarm batteries when you turn back your clocks for the end of daylight saving (which was Sunday April 6).

The message is quite simple: only working smoke alarms save lives. If there's no sound from your smoke alarm, there's no warning.

Remember, it is normally smoke, not flame or heat, that kills the majority of fire victims. When asleep, our sense of smell is largely diminished, and we're unlikely to smell smoke. The smoke may also put occupants into a deeper sleep, so a smoke alarm actually helps wake you. And, with all of the plastics, materials, electronics and chemicals around – house smoke can be extremely toxic.

Here are some interesting home fire facts:

- One in five Australians have experienced a fire in their homes
- Research has shown that the absence of a smoke alarm can increase the possibility of a fatality by 60%
- While 45% of properties visited had smoke alarms installed, 31% of those were not functioning with the batteries flat or even removed
- About 64% of house fires were unintentionally lit
- Around 56% of these started in the kitchen during cooking and a further 15% the result of electrical faults
- In more than 95% of metropolitan household fires someone was home at some stage during the fire
- From 2001-2006 there were 108 deaths in house fires in Victoria and the majority of incidents occurred when the deceased was resting or sleeping

Thank you to the Woodend Bowling Club.

The Woodend Bowling Club recently held a Social Day for the Woodend CFA attended by more than 50 members of both organisations. A very entertaining day was had by all, culminating in an excellent BBQ and a generous donation from the Club to the CFA.

Member of the Month: Amber is a Dutch Treat!

Amber Smeenk is one of the new members of the Brigade, joining with her husband Rene midway through last year. They have both completed their Minimum Skills training and were recently voted off the probationary list.

Amber was born in the Netherlands (Holland) in Den Haag (The Hague), and grew up in Zoetermeer before moving

Photographs by Marnie
Naturally, beautiful portraits taken on location

- Babies & Children
- Victorian & Costume • Weddings •

Marnie Tole

Photographer

03 5427 4668

0405 326 324

Woodend

marnietole@yahoo.com.au

to Amersfoort when she was 16, and it was during this time that she developed her love of horses. "I liked it much better there as it was a very nice city with a medieval city centre, and also surrounded by what Dutch people call forests – but for Australians it would probably be a small park".

She started work as a mortgage advisor for a large Dutch bank, before moving to England where she worked as an office manager for a building company. Amber was also a rider in international dressage competition. She is now a horse riding instructor, teaching people to ride, coaches competition riders and trains horses ... "and the less glamorous job of poo scooping is mine as well from time to time".

Her husband Rene is a librarian by trade, but currently works for a motor home rental company – we'll discover more about him in a future profile.

After moving to Australia, they lived on a large property between Sunbury and Riddells Creek, but they found that it was "too open and there were not enough trees". They moved to Woodend in September 2006 and have never looked back. "It's the most perfect place to live, and now I can walk to town to get a cup of coffee!".

Why did you join the CFA? "I had several reasons for joining. I wanted to get to know more people in the area and to do something for the community, especially after those big fires last summer. I also wanted to know more about how to be safer in a country where bushfires are so present. It is something that just does not happen in our old country".

What you enjoy about the CFA? "I really like being able to learn something new and most of all something completely unrelated to horses. Likewise, getting to know people who are not necessarily interested in horses".

Your most memorable moments in the CFA thus far? "We have only been members for a very short time, so that

a few good
WORDS

Editorials, Publicity, Advertising, Proof-reading, Letters.

Nadine Hartnett
Freelance Writer

0439 399 838
nhartnet@bigpond.net.au

SELL YOUR CAR TODAY

Prestige ~ Family ~ Sports ~ 4X4

car connect direct

0418 183 360

Cash ~ Bank Chq ~ Finance Paid Out
Email: ccdirect@bigpond.net.au

LMCT - 10132W

will be when we passed our exam wildfire fighter and got our turnout gear?.

Amber is appropriately named, when you see her hair colour. She loves reading, bush walking and, of course, horses and riding horses ... which obviously doesn't leave very much time nor money for anything else.

If you live or work around Woodend – we need your help!

The Woodend CFA needs more members for Daytime Response, especially on week days. While we have a growing membership list, many of our members now work out of the region, which makes it difficult sometimes during weekdays to get enough members for a turnout. If you are around town during the week, and are interested in doing something really valuable for our community, please give us a call. We are ready to start your Minimum Skills training immediately, and you should be qualified in just a few months.

For further information contact Captain Mick Christie on 0419 870 601, call the Woodend CFA on 5427 2356, or visit the station in Urquhart Street. Remember, we're always looking for new members – especially people able to respond during the day.

The Woodend CFA is a volunteer emergency service, committed to Creating a Safer Community.

Submitted by Lieutenant Mike Dornau, Woodend CFA

KYNETON EQUIPMENT & PARTY HIRE

FOR ALL YOUR HIRING NEEDS

8-12 BEAUCHAMP ST PHONE (03) 5422 2311
KYNETON VIC 3444 FAX (03) 5422 2930

Email: kynhire@bigpond.net.au
website: www.kynetonhire.com.au

All news items, articles and community news columns must be received by 15th of each month.

Are you a community organisation looking to get your message out? We accept submissions from community groups for articles free of charge. For advertising rates see page 2 of this issue.

E'Clips Hair & Beauty

Ph: (03)54 273 822
Shop 3/115 High Street
Woodend 3442



Relax ... we understand it's all about you!

Nature's Garden
Quality 100% Organic Produce

DISCOVER THE HEALTHY BENEFITS OF AN ORGANIC LIFESTYLE

At Nature's Garden, our aim is to provide you with the highest quality 100% certified organic fresh fruits, vegetables, produce and groceries, combined with friendly service and advice, and competitive prices.

We also offer FREE HOME DELIVERY with every seasonal fruit/vegie box ordered to be delivered in Woodend or valued over \$50. For all orders under \$50 delivered outside Woodend, there is a \$5 delivery fee.

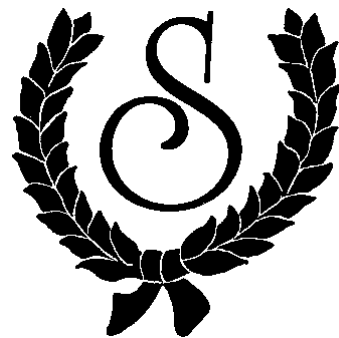
RED BEARD BREAD DELIVERED FRESH EVERY DAY FROM TUESDAY TO SATURDAY

Call in and see our extensive 100% organic range at Shop 4A Collier St, Woodend (cnr Anslow St) or call 5427 4406.

Naturally, better products



NGW2474



T.J. SCOTT & SON Funeral Directors

- Serving the Macedon Ranges for almost 70 years
- Available 7 days a week, 24 hours a day
- Specializing in Pre-paid funerals

For further information, call the Scott family:
John, Kelly, Jack, Paul & Daniel.

5 Piper Street
Kyneton
54226455

46 Aitken Street
Gisborne
54284155

www.tjscottandson.com.au
tjscott@kyneton.net.au

Braemar Year 12 Student selected for International Science Forum

Sophie Vitesnik from Braemar College has been selected to represent Australia at the Russian Science Study Tour hosted by the All-Russian Youth Aerospace Society to be held in Moscow in June this year.

In January, Sophie attended the National Youth Science Forum (NYSF), a twelve-day residential program held in Canberra, which brings together 288 students from around Australia and overseas. According to Sophie, 'the two weeks went by much too quickly and to attend the Forum and to share a passion of science with like minded students was simply remarkable'.

The Canberra Forum presented Sophie with opportunities to work with scientist in their laboratories using state of the art equipment and technology, to meet and talk with prominent scientists in their fields of study and research and go behind the scenes at places such as the Australian National Wildlife Collection (ANWC), an official Commonwealth collection, which classifies and documents all of Australia's mammals, birds and reptiles.

Dr Peter Brown, a renowned Plastic Surgeon, was just one guest speaker and his lecture was a highlight for Sophie, "he spoke with such passion about his humanitarian work in East Timor and other third world countries – it was truly inspirational".

The major Australian Universities were also present at the Forum to showcase their science and engineering facilities to prospective students and for the past two months have opened their doors and welcomed NYSF students in a series of specially designed University Seminars.

A most important aspect of the NYSF is the supportive network of friends that share the common interest of science and engineering and have similar aims, qualities, ability and interests. "There is no doubt that the National Youth Science Forum created strong bonds between students, student staff and Rotarians. Getting to know Rotarians, through the Home Hospitality day and the Rotary Dinner also built another great network. All the Rotarians were fantastic, interesting people, coming from all walks of life. It was a pleasure meeting them."

The Forum was not all hard work! The presentations and debates were full of energy; every bus trip engaging,



every briefing entertaining and the evening activities were a "blast"! The social activities included a 'Science Dinner' hosted by Rotary, a bush dance, boot camp 'mornings' and a rather extraordinary 'disco'.

Workshops were not just related to science and possible future careers in science but explored valuable life skills, which nurture confidence and social awareness.

At the Forum itself, Sophie demonstrated exceptional leadership, communication and motivational skills, leading her to become one of 26 invited to a training program to become staff members at the NYSF for January.

To have been selected for the Russian Science Study Tour is a credit to her school and her community. Sophie was nominated for the Forum and continues to be supported by the Rotary Club of Woodend and Rotary District 9800.

For further information about the National Youth Science Forum please visit the website: www.nysf.edu.au

ADVANCED EQUINE DENTISTRY
YOUR VETERINARY PROFESSIONAL

Dr Shannon Lee BVSc
0418 598 621
we come to YOU!

Mobile services for Macedon Ranges of Victoria
www.advancedequinedentistry.com.au

WOODEND NURSERY & GARDEN SUPPLIES
OPEN 7 DAYS
"LOCAL KNOWLEDGE FOR LOCAL CONDITIONS"
36 URQUHART ST, WOODEND
Tel: 5427 1866 Mobile: 0428 271 866
Full range of garden & landscape needs
Rock, Soil, Sands, Sleepers
Bobcat hire

WOODEND TAXIS

☎ 5427 2641

- Taxi Passengers
- Verbal Message Delivery
- Airport & Melbourne Service
- Also Pickup & Delivery of Letters & Very Small Parcels

Betty Valli

29 Urquhart Street, Woodend

Val Sutton & the Newham hall

Sipping his coffee, Barrie Sutton passes the phone to his wife with a matter of fact "it's about the hall". A recent Newham Community award attests that, among other things, it's now been about the hall for over 25 years.

Leaving a busy life in Melbourne, Val admits that moving to their Cobaw farm in 1982, the silence was absolutely deafening. With three young sons and quickly befriended by the neighbours, the Suttons involved themselves with the Newham School and CFA. After attending a public meeting regarding the future of the Newham Mechanics Institute however, saving the beautiful old hall quickly became a project close to Val's heart.

"In 1903, community volunteers funded and facilitated the purchase of the land and erection of the building. In the pre-television days it was very much the hub, and the focal point for a whole spectrum of events" says Val.

Visitors, upon stepping down into the original structure, note a wonderful sense of having 'arrived' as eyes are immediately drawn to the stately vaulted ceiling, which seamlessly joins with the baltic walls. Now free of paint and returned to their original state, they host early district photographs and the honour roll. There is a palpable feeling that 'there's been a lot of living done here ... and it's not over yet'.

Committee members, always mindful of the need to maintain such a local treasure, are quarter way to their \$30,000 fundraising target which will enable access to Shire and State Government funding for further refurbishment.

Ask Val why she has bothered volunteering all these years with keys, booking sheets, tradesmen and the like, and with a broad smile she will quickly tell you "Newham is a great place, and I love living here. Among other things, the hall provides a focal point and a way for residents to meet, socialise, be welcomed and be involved. For me it's

about contributing to a really worthwhile community asset".

With amazing dexterity, Val then retrieves a diary and a pen from her handbag as Barrie pointedly concludes "and she loves it" while again handing her the phone.

Submitted by Kathy Mexted



Your local shire news

Not taken for granted

The 2007/08 round of Council's community funding scheme, which provides grants for local clubs and organisations, is being launched this month.

The scheme has distributed more than \$1 million to worthy groups over the past 10 years, and I urge any of our hard-working volunteer groups to apply if they are seeking funding for a project.

The categories are for recreation and facilities grants; community wellbeing; and culture, festivals and events.

Last year more than \$118,000 was given to 73 projects and groups across the Shire, which provided a significant boost to our local clubs and groups and their projects.

Council is keen that the clubs and groups try to match Council funding or contribute towards their project in either cash or labor. This matching commitment will enable us to stretch out our dollars as far as possible.

Our Council officers this year will be particularly interested in targeting applications that are supported by Community Action Plans, and those that improve disability access.

Officers have written to all groups which applied last year to advise them of the new round of funding, and will be advertising in the local newspapers this month inviting applications. I would expect that the successful applicants will be notified in early August. I urge all groups within Newham and Woodend to consider an application. People wanting more information should ring Sarah Mayne at the Council on 5422 0345 or go to the website www.macedon-ranges.vic.gov.au for an application form.

Hanging Rock update

The Department of Sustainability & Environment has provided a \$50,000 grant to Hanging Rock to improve the walking track and barriers at the top of the Rock.

Funding will also help design two environmentally and aesthetically friendly viewing areas on top of the Rock to meet safety requirements. We should all welcome works to help improve this icon of our Shire.

Managing your block

The Council will this month mail out land management information to residents on properties of 2 hectares or more. This mailout will include information on how to access and use the Council's Voluntary Environmental Resource Inventory, and other supports.

More than 3000 copies of the *Caring For Country* resource will be sent to residents on properties of 5 hectares or more.

Henry Bleeck, Your Local Macedon Ranges Shire Councillor,
5422 7027

Your Memories to DVD

* 8 mm/16 mm Films

* Mini DV

* Compact VHS

* VHS

Discount for Quantity



Top Hat Productions

Ph: 5422 3930

Regular business card advertisements (90mm x 55mm) are \$38 inc GST per month - book & pay 11 months and get 10% off.



**WOODEND & DISTRICT
PODIATRY**

John F. Shapland
Resident Practitioner

Reg. Department Veteran's Affairs

5427 2064
Business and After Hours

1895 Mt. Macedon Rd., Woodend

Woodend Red Cross

The members of the Woodend Red Cross Unit wish to thank everyone who supported us so generously during "Red Cross Calling". To everyone of you we give a big, heart-felt thankyou; especially the volunteers from the Woodend Youth Group, who door-knocked and tin-rattled on Saturday March 1st. Well done.

Submitted by M.R. Gaal, Hon Sec

WOODEND COMPUTER SERVICE
Sales - Service - Training & Help
THE BANK - OFFICE 3 - 75 HIGH ST WOODEND
JASON JOHNSON - 0400528129
pcs@live.com.au

Artanica 2008

The Mt. Macedon Horticultural Society will host this year's 'ARTANICA' in the gardens of Duneira, 8 Officer Lane, Mt. Macedon.

This event will be held during the week-end of April 19-20 from 10am to 4pm daily, entrance cost is \$5 per person.

Visitors will have the chance to view the magnificent Mt. Macedon garden, Duneira, whilst enjoying the diverse garden sculpture from our local and visiting artists including Fiona Orr, Daniel Jenkins, Grant Donaldson, Charles Aquilina and much more. The sculptors will

showcase a wide range of media representation, including hot glass, iron, stone, metal, wire and wood.

This year will see the introduction of a two-hour limestone workshop with local artist Dawn Robinson (\$49 per person, including admission) participants will create their own unique sculptural piece to take home.

Workshop bookings are essential, phone 0427 317 388

Food and regional wine will be available.

For further information please phone Ann Tomlinson 03 5422 3621 or email yournextevent@bigpond.com



When: Saturday 19 - Sunday 20 April 2008

Where: 8 Officer Lane, Mt Macedon (*Melways Ref: 609 G10*)

Time: 10am - 4pm daily

Admission: \$5 per person

ARTANICA is an exciting annual exhibition of diverse garden sculpture set within the grounds of the Duneira, a magnificent Mt Macedon garden.

The event will showcase the works from some of Victoria's best sculptors, with the opportunity to purchase showcased pieces.

LIMESTONE WORKSHOP with Dawn Robinson (\$49 per person, includes admission)

Participate in a two hour workshop, creating your own sculptural piece to take home while learning about the various techniques, tools and equipment.

Workshop bookings essential ph. 0427 317 388 or **e.** yournextevent@bigpond.com

Refreshments will be available over the weekend

News from Newham

Exciting things are starting to happen at our Hall. Re-stumping and new flooring will start on Monday 7th April. Therefore, the main hall and kitchen will be closed until further notice [probably into May – depends what we find underneath] however, the side meeting room and toilets will still be available for use. These works are being carried out using our Heritage Victoria Grant and will be supervised by our heritage architect.

Nick Massie is helping us obtain quotes from four architects for the new works and we have sent out copies of our Business Plan to the major groups in Newham for them to review, comment, criticise or recommend any actions from their perspective – we look forward to getting their input.

The Business Plan and our concept drawings were on display at our mighty, major garage sale and Newham residents were sent a flyer inviting all to inspect and comment as well. This is all part of our community consultation which we hope all will participate in as we go along – there will be lots of opportunities to have your say, please don't leave it until the last minute to object about anything. Our Hall was built by our early community and we want input from our present community – again – it is your Hall.

Our Wine Raffle raised \$1100 – what an effort! Our thanks go to Geoff Neil for providing the money to buy the wine which was won by Max Evans from Romsey whose Grandad put him in. Grandad was very happy! Next raffle will be a load of wood which started on Garage Sale Day and will be drawn at the end of April. We deliver to our winners and it is amazing how many have never won anything in a raffle before!

The response to Newham Landcare Group's Bat workshop has been so great there are now two sessions and Jim & Jenny's "all about bees" was booked out. On May 10th we will be having a Trivia Night at the Hall. Coral Crozier is organising this for us, & Brendon Crozier will be running the night. Cost is \$20 per person, BYO, with great prizes. Keep your eye out for our flyers and posters and book with Coral on 5427 0266.

We have raised approx \$7500 now. The response to our direct request for donations from Newham residents to help with our goal of \$30,000 has been truly astonishing and we are extraordinarily grateful. We thank those people wholeheartedly – you are all truly saints and angels! Tax receipts will be sent out in due course. Some people don't have a roadside letterbox and didn't receive a request so if any readers would like to donate to the Newham Hall please fill out below and send. Next month we will give a running total.

NEWHAM MECHANICS INSTITUTE

To the Treasurer, Newham Mechanics Hall Inc.
108 Whitebridge Road, Newham 3442

Please find enclosed a donation to Newham Mechanics Hall Inc, for building restoration and extension works, for the sum of \$

(Optional) I request a Tax receipt as follows:

Name of Donor _____

Address _____

(All information provided will be held in confidence)

Paul Groves

Mobile 0414 928 491

Phone 5427 2171

Computer Sales, Repairs & Consulting

Home and Office Networking
Onsite Repairs and Maintenance
New Computer Systems

paul@pcweirdness.com

News from Paul's Computer Services

Paul Groves advises that he has relocated his business to Woodend Dental Group, 2/39 Anslow Street, Woodend.

Paul has been in the business for 6 years and has developed a good clientele, both business and personal. For your convenience he is now situated in town, providing outstanding service and still visiting you at home or work.

His specialities are servicing, repairs, installations and tutoring, with experience in home and office networking and offering professional advice when it comes to the running of your computer.

*Are you confident you are getting
the best deal
from your bank?*

Westpac Woodend have specialist
Bankers available by appointment
for the following services

- Transaction Accounts • Business Accounts
- Savings Accounts • Merchant Facilities
 - Home Loans / Investment Loans
 - Credit Cards
- Financial Planning / Superannuation
- Personal Loans • Insurance Needs

We may be able to save you time & money!

Feel free to call us
for an obligation free appointment on

5427 3426

or visit our branch at 75 High Street Woodend

Westpac

75 High Street, Woodend

5427 3426

Opening Hours

Monday – Thursday

9:30 am – 4:30 pm

Friday 9:30am – 5:00pm

WOOMBA 2008

Those wanting to be involved in the 2008 WOOMBA—Woodend Street Festival Committee, are invited to attend an upcoming meeting on **April 10th**, 6:30 pm at the Woodend Bakery Café, 122 High Street.

For more information please call Cori on 0419 338 835, or email felvus@alphalink.com.au

ZUMSTEIN



Zumstein Pty Ltd
Factory 1/32 Brooke Street
WOODEND VIC 3442
Ph 03 5427 4579
Fax 03 5427 3559
Mobile 0412 138 364

DESIGNER AND MAKER OF FINE FURNITURE AND JOINERY

solid and veneered furniture
external and internal doors
wardrobes, studies
laundries
bathroom furniture

“Third generation woodwork really shows”

James Morrison and Max Gillies: performers at this year's Woodend Winter Arts Festival

Jazz great **James Morrison** and his sextet will perform for almost 2 hours in a special concert at this year's Woodend Winter Arts Festival.

This opportunity to hear one of Australia's all-time jazz greats in Woodend should not be missed.

On Saturday 7th June at 8.30 pm, the James Morrison Sextet will perform a “Jazz Indugence” at Heywood Hall, Braemar College. This event is sponsored by Hanging Rock Winery and the concert will include interval with Hanging Rock wines available for tastings and purchase. All tickets include free bus transfers from Woodend to Braemar, as there is no public parking at the venue. Tickets are \$80/\$70.

Max Gillies and the Scotch College Orchestra will present a children's concert “Peter and the Wolf.”

Sergei Prokofiev's musical play is loved by generations of children the world over. For this performance Max Gillies (who has wanted to narrate the work all his life) is joined by the Scotch College Orchestra under John Ferguson. All tickets for this concert are just \$10 for any age. Tickets include FREE bus transfers, as there is no parking available at Braemar. Buses will leave from two prominent Woodend locations. The concert is on Saturday 7th June at 2.30 pm.

For all program and ticketing information, please visit www.woodendwinterartsfestival.org.au or collect a program from the Visitor Information Centre. Tickets will be available through Ticketmaster 136 100.

Kerri Hendriks Mobile Massage

Since 2004, I have operated a successful mobile massage service – bringing the massage to you – a service that shows a caring and positive attitude to the needs of each individual client.

As a graduate of the **Australian College of Massage and Natural Therapies**, I currently hold a **Level 4 Certificate in Remedial Massage**, which incorporates **Relaxation** and **Deep Tissue Massage**.

My clients have the opportunity to experience a soothing **Almond Oil** massage, incorporating a **250-year-old natural multi-mineral salt massage stone**, **lavender-scented face towels** and complimentary **brazil nut body butter** applied to hands and feet on completion of the massage.

Half hour /relaxation - \$30

Half hour /deep tissue - \$40

One hour /relaxation - \$55

One hour /deep tissue - \$65

1½ hours /relaxation - \$80

*For an appointment, call Kerri
0403 685 060*

R.S.L. Women's Auxiliary News

Well, March has been a very eventful month for our hard-working girls. Firstly with our A.G.M. held on Saturday 1st March when our new committee was elected, scrutineered by Reg Till, Vice President of Woodend R.S.L. Committee as follows:

President	Mrs Margaret Russell
Senior Vice President	Ms Tina Llewellyn
2nd Vice President	Mrs Betty Barned
Secretary	Mrs Pam Russell
Assistant to Secretary	Mrs Betty Barned
Acting Treasurer	Ms Tina Llewellyn
Fundraiser	Mrs Helen Wright

Wednesday 12th March we were pleased to welcome a bus load of 50 people from Bendigo R.S.L. Poppet Head Day Club for a delicious morning tea, catered for by our ladies. Thanks to Margaret, Betty H., Stella, Helen, Barbara, myself and our Reg who opened the bar and delighted everyone with his informative talk on the beauty spots of Woodend and District.

Saturday 15th was again a busy night as our ladies catered for a 21st birthday party. Once again thanks to Margaret, Betty B., myself, Colleen, Reg and Linda, who served all night on the bar. The party was for 70 people, the crowd was very well behaved, our thanks to Steve and Susan Wyatt, parents of Charles, the birthday boy, for their help in cleaning up the Hall.

Anzac Day is fast approaching and our ladies will be assisting the R.S.L., selling badges and supplying the Gunfire Breakfast at 7am after the Dawn Service. Also the

Macedon Ranges BaBs Group

The Macedon Ranges BaBs (birthing and babies support) Group is a unique community group passionate about giving women and families information that may help them through pregnancy, birth, newborn care and general parenting issues. This term the BaBs group will be meeting at Gisborne Community Health Centre – 5 Neal Street Gisborne on the 2nd and 4th Mondays of each month – 9.30am-11.30am. Upcoming topics include Routines, Coping at home and Returning to work. For more information go to www.woodendweb.org/babs or contact Amanda on 0422 491 976.



**FIREBIRD MOTOR REPAIRS
CAR WASH**

31 URQUHART STREET
WOODEND 3442.

OPEN 7 DAYS
Phone:(03) 5427 2255

Woodend Art Group

Term one has been short and sweet. WAG members have been busy working on and enjoying their Drawing, Life Drawing and Painting classes. Helen Cottle's Acrylic workshops have been popular and we are planning some more.

Our little group of landscape painters (known as WAG ON WHEELS) has been out and about in the local area, enjoying such delights as The Old Schoolhouse garden.

Planning is underway for our Queen's Birthday Weekend Show, which is a lively, informal and festive occasion for us.

If you wish to find out more about the group and its activities, please ring Pamela 5427 1659, or Marian 5426 1449.



BUDA
Historic HOME & GARDEN

Contemporary Textiles Award, June 08
\$250 prize in each category with an overall prize of \$750
TEXTILES CATEGORIES (Theme is Gold). Embroidery of Original Design, Mixed Media, Working with Yarn, Pigment, painted, dyed fabric, Wearable Art, Modern Interpretation of Traditional Ethnic Style. \$10 per entry per work non-refundable. Students FREE. Entries close 2nd May 2008.
Open Wednesday to Saturday 12pm–5pm & Sunday/Public Hols 10am–5pm
42 Hunter Street, Castlemaine ~ Ph: 5472 1032
admin@budacastlemaine.org www.budacastlemaine.org

morning tea after our own service. Busy, Busy.

If there are any ladies, age no option, who would like to join our Auxiliary, even if they can spare only an hour or two a month, you will be most welcome. Last month we welcomed Colleen, Helen, Joy and Ruth. Thank you girls. You are already doing a great job. We love you all.

Our Auxiliary meets the first Saturday of every month. Plans are being discussed for fundraisers, so if anyone has ideas please pass them on at the meetings.

Submitted by Betty J. Barsed, 2nd Vice President Auxiliary



bodywise
UNDERWEAR
comfort for women

*beautiful gifts
for Mothers*

Underwear sizes 10A/B to size 22E/F

- bras • briefs • camisoles
- swimwear • sleepwear

Gift Vouchers Available

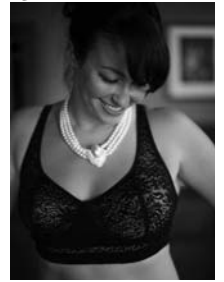
Phone 1300 66 17 66

Opening Hours 9.30 am to 4.30 pm

Fittings by appointment only 9.30 to 3.30

Est skincare • Queen B candles • M.I.L.K. books & gifts

www.bodywise.com.au



Armstrong Collins & DeLacy SOLICITORS

Established 1867

Commercial, Property, Estate and Family Lawyers

Woodend Office:

81 High Street, Woodend

Phone 5427 1472 Fax 5427 3073

Kyneton Office:

143C Mollison Street, Kyneton

Phone 5422 1677 Fax 5422 3357

MACEDON RANGES SELF STORAGE

- * 7 day access
- * Individual units
- * Affordable prices
- * Insurance available
- * Now Fully Alarmed

Store your:

- * Cars
- * Boats
- * Business documents
- * Furniture etc.

Lot 3, Hoyle Court, Kyneton
(Off Beauchamp St)

5422 1898

5422 3488

Woodend Visitor Information Centre
High Street Woodend

Ph 1800 244 711

TRADE & SERVICE DIRECTORY

ANIMAL CARE

MACEDON RANGES PET CARE

15 years animal nursing.
Dog walking, feed household pets &
farm animals while on holidays.
Ph: Judy on 5427 1352

AGRICULTURAL CONTRACTOR

PHILIP BEATTIE PTY LTD AGRICULTURAL CONTRACTOR

Hay & Silage Round Bales
Mowing Small Bales
Raking Large Bales
Spreading Ploughing Sowing
45 Millers Lane Ph (03) 5427 0702
Newham 3442 Fax (03) 5427 0702
beattie@netcon.net.au Mob 0419 573 226

STONELAYING & PAVING



Stonemason & Paver
specialising in

- Retaining Walls
- Drystone Walls
- Stone Houses
- Paving
- Over 20 years' experience

Cameron Dunn
Ph (03) 5427 4778 Mob 0429 162 589

PSYCHOLOGIST

Sam Luxemburg Registered Psychologist

- Personal Counselling in Woodend & Romsey (Medicare rebate available)
 - Counselling Training
 - Myers-Briggs personality testing
- Phone: 0428 270 401**
www.luxcollege.com.au

COUNSELLING



Keryn Allan
Dip. Prof. Couns.,
M. A. C. A.

COUNSELLOR

Grief & Loss
Trauma
Stress, anxiety &
depression
Anger management
Workplace issues
Behavioural problems

Phone: 0417 011 300
Email: kezallan@ozemail.com.au

DRESSMAKER

Beryl's Tailoring



DRESSMAKING, ALTERATIONS,
BRIDAL, EVENING & DAY WEAR,
LADIES AND MEN'S REPAIRS

Beryl Bachelor
QUALIFIED DRESSMAKER, NEWHAM

BY APPOINTMENT ONLY
MON TO FRI 9 - 5

5427 0568 0418 510 179

TREE SERVICES



- tree pruning / removal • stump removal
- tree planting / transplanting • rope & harness climbing
- confined space removal • fully insured

Professional commercial & residential tree maintenance
all work carried out by qualified arborist

Call Anthony **0417 059 969**

HOME MAINTENANCE

Home & garden maintenance &
landscaping service including
decking, pergolas, carpentry &
painting.

Stuart 0409 150 629
AH 5427 2465

EXCAVATOR & BOBCAT

Cheap 'n' Neat

- Bobcat Excavations
- Bobcat & Tipper Hire
- stump grinder
- & wood splitter

0418 556 634, contact Les

RUBBISH REMOVAL

CALDER ENVIRONMENTAL SERVICES

Your local supplier of rubbish removal skips
from 2 to 15 cubic metres.

We deliver • You fill • We remove
WE BUY OLD CARS & SCRAP METAL
Scrap bins supplied
Conditions apply

Prompt reliable service
0428 509 525

GATES, FENCING, PAVING

GATES, FENCING & PAVING

- Automated Gates
 - Colorbond Sheet Fencing • Pool Fencing
 - Timber & Steel Picket
 - Gates Made to Order
- FREE MEASURE & QUOTE
PHONE LAURIE 0419 005 185
5427 1192

METAL GATES

BVM Metalcraft

SPECIALIZING IN OLD WORLD AND
MODERN STYLE GATES
STEEL BALUSTRATING INCLUDING STAINLESS STEEL
ROPE AND WROUGHT IRON, PUNCHED RAIL FENCING
ALL MATERIALS USED ARE
GALVANIZED OR ZINC PLATED
FINISHED IN YOUR CHOICE OF POWDERCOAT
OUR DESIGN OR YOURS
METAL POLISHING - ALLOYS, BRASS, STAINLESS STEEL
CONTACT BEN 0422 288 768
FOR A FREE QUOTE

ELECTRICAL SERVICES

RML Electrical

REC 15642

Installation - Maintenance - Drafting

Robert (Rolly) Leslie
Mobile 0438 347 896
Tele/Fax (03) 5427 0197
9 Ingletons Road
Cherokee, 3434



EARTHMOVING

BLACK FOREST EARTHWORKS

Bobcat & Tipper Hire
Driveways, crush rock deliveries
Rubbish removal
Contact: Dave 0412 840 051

PLUMBING SERVICES

Need a plumber?

For reliable, professional, local service

- Domestic
- Commercial
- Industrial

Maintenance
Work

Call Mal: 0423 204 277 5427 3315

Trade Page Ads are \$25 per month inc GST. Pay for 11 months in advance and receive 10% discount.

Heritage Society News

In spite of the recent spate of hot weather, autumn has officially arrived and before long we will be enjoying the colours of our famed Avenue of Honour. The account of its official opening in was reported in *The Woodend Star*, Saturday 14th September 1918. From all accounts, apart from the solemnity of the occasion, it was quite a day. This photograph is the only one we have ever seen recording the event. Possibly it was the only one taken on the day. We are lucky to have it in our collection.

SHIRE AVENUE OF HONOUR GREAT OPENING CELEBRATION Mr Watt Under "Pressure Of Business"

"Wednesday last witnessed the successful consummation of the movement, initiated only about a couple of months ago, for the purpose of recognising, in a lasting form, the valued services rendered to the Empire by the representatives of the Shire of Nenham and Woodend at the Great War. On the afternoon of that day an avenue of 150 Portugal oaks planted along the Mt Alexander Road, in honour of the brave boys claimed as belonging to the district, either because of its being their birthplace or on account of their association with it as residents at some time or other, was officially opened by the carrying out of a programme which must serve to make the occasion a very memorable one indeed.



The avenue extends for over a mile from just beyond Gagiero's hill, along a nicely curved section of the road towards Woodend North. No better site for anything of the kind could be wished for, and, not only is the position a desirable one in every respect, but, by far the greater part of the length covered, the soil is of a red richness that should insure the prosperity of the trees. Where this essential condition was lacking, towards the town end of the avenue, soil was carted to make up for the deficiency. Though natural advantages of great value were present to begin with, the movement necessarily involved a vast amount of work, but this was voluntarily entered upon and carried out by a series of working "bees", and smaller parties, in a manner reflecting very great credit indeed on all concerned. The project called for a united effort, and that was put forth. At the same time, there were those who showed a particular enthusiasm in regard to the undertaking, that exceeded the pleasing general interest manifested in it, and while, in this connection it would perhaps be invidious to make any individual distinction, it may

not be amiss to say that the locality of Woodend North identified itself conspicuously with the movement throughout, and did much indeed to make possible all that was accomplished within the limited time of two months or so. The avenue, however,

QUIT SMOKING

QUIT CIGARETTES

In Sixty Minutes

GUARANTEED!

Lose Weight For Life

Call Now

1300 737 146

Welcome to the Woodend Star Kids Club April Birthdays

2nd	Pip Southey.....	Turns 7
7th	Matthew Cations	Turns 12
7th	Cooper Ormerod	Turns 7
11th	Scarlett Southey.....	Turns 9
11th	Simon Ross.....	Turns 10
11th	Alisha M Sturt.....	Turns 11
12th	Grace Elliot.....	Turns 12
13th	Thomas Dale.....	Turns 3
13th	Burry Smith	Turns 12
14th	Jack Hayward.....	Turns 9
14th	Chloe-Louise Cahill	Turns 13
18th	Emilee Tia Anderson	Turns 11
21th	Luelle Tanner.....	Turns 12
22th	Jordan Deleeuw	Turns 9
24th	Meghan Norman	Turns 6
27th	Kaleb P. Gabauer	Turns 11
29th	Brandon Lee Gabauer.....	Turns 9
29th	Jayne Plant	Turns 12

Happy Birthday Everyone!

**You can collect your birthday surprise
by visiting Collier Office & Business
Assist in the Woodend shopping centre
– but you must come in yourself!**

(PS: We need your jokes and pictures! Please drop them in.)

JOIN THE WOODEND STAR KIDS CLUB

Fill in your details below and place in the drop-boxes. Age limit is restricted to 13 years old and under.

Full name: _____

Address: _____

Date of Birth: _____ Age: _____

Phone: _____

Parent/Guardian Signature: _____

has not yet been completed. The number of trees planted does not quite "run out" the district's Honour roll, but represent a very substantial instalment of it. In fact, had it been possible to plant about a dozen more, the list would have been brought right up to date. That, however, could not be attempted without leaving work connected with the main portion of the avenue unfinished, but the additional trees required will be planted next season. All names were however, given an equal chance by the committee in the allotment of the trees planted, and for the twelve positions yet to be filled, that is, after selections had been made by relatives of deceased soldiers. With the exception of these selections the positions were balloted for, provision being made in the procedure followed, to allow, as far as possible, of those of the one family obtaining trees near each other."

To be continued next month

Meta Massage

REMEDIAL MASSAGE, SHIATSU, REIKI

Raymond White

Telephone 0411 268 336

or 5427 4237 for an appointment

18 years experience • Chronic and acute conditions
Sports injuries • Rehab work

Walkers Wanted

Group Leaders are now trained for the Macedon Ranges Walk Together Project.

Arthritis Awareness Week (6-12 April) will be supported by the project and the walks of that week will highlight for individuals of the Macedon Ranges who suffer with arthritis the message that walking can be good fun and also good for "muscles and joints"

For further information www.arthritisvic.org.au

Groups and Times

Woodend

Up to 30 Minutes – Discover Walking

Suitable for

- Well people with walking aids
- Post Illness, surgery
- Prior physical inactivity
- Disabilities
- Arthritis Sufferers
- Individuals wanting to walk at own pace, in their own time-can stop and rest.

Group Leaders

Helen – phone 5427 1891

Tuesday, 10.00-11.00am, inside circuit

Leesa – phone 5420 7458

Monday, 9.00 am, outside circuit.

Puff, N Sweat – 30-45 minutes

Suitable for individuals who want to stride out with some hills

Group Leaders

Deann (6.30 pm) – 5424 8143, Rosalie – 5427 4585

Wednesday, 10.00 am

Mike – 5427 1547, Hubert – 5427 3208

Tuesday, 10.00 am

For further enquiries re walks or ongoing leader training please phone Jeannie 5427 1845, 10.30 – 12.30 Thursday or leave a message.

WOODEND HEALTH & FITNESS

- Wide range of equipment
- Group fitness classes available
- Teen's Gym sessions available
- Personal training available

Start your fitness campaign today

30 Wood Street, Woodend

Phone Brian on 5427 1181 or 0400 263 230

Spotlight walk at the Rock

A very popular free event – come along and meet others for a night of observing and learning activities about our local fauna. We hope to see the greater glider as well as other possums, not to mention kangaroos and other friendly inhabitants within the reserve. Saturday 19th April.

Meet at 7:00pm Hanging Rock Café (bring torch)

RSVP by 16th April to Paul Marmara 5427 0258

Macedon Ranges Walk Together

Feel the results within weeks.

It's easy It's local It's free It's fun

Macedon Ranges Walk Together – the program that caters for individuals to walk and talk at their pace and in their own time with minimal cost and manageable effort.

For enquiries your local Neighbourhood House or

The Coordinator- Jeannie - Phone- 5427 1845

- Email- www.wnci@vic.chariot.net.au



Macedon Ranges Walk Together Project is facilitated by the Neighbourhood Houses, Lancefield, Romsey, Woodend and the Riddells Creek Community Living & Learning Centre in collaboration with The Macedon Ranges Shire Council, Cobaw Community Health, and The Central Victoria Health Alliance PCP. Funding provided by the Department of Planning and Community Development (DPCD)

What's on at Town Hall, Kyneton

The Macedon Ranges Arts Ball

Saturday May 24, 7.30pm

All tickets: \$25

Doors open at 6.30pm

Cabaret Seating, limited numbers

Annie Get Your Gun

Friday May 16, 11.30am

Tickets \$15, groups 10+ \$13.50

Morning Music Package of 4 shows \$13

Doors open 10.30am with complimentary scones and morning tea, flat seating

Possum Magic

Friday July 11, 6.00pm

Saturday July 12, 2.00pm

Doors open one hour before performance

Raked and balcony seating

Cosentino Threshold

Saturday July 26, 8.00pm

Ticket: Full \$25, Con \$20, Children under 15 \$10

Doors open at 7.00pm

Raked and Balcony Seating

For all tickets and enquiries,
phone 1300 88 88 02

All news items, articles and community news columns must be received by 15th of each month.