

THE NEW WOODEND STAR



Circulation of 3050 throughout
Woodend postal district, Newham, Hesket, Ashbourne,
North Woodend, Hanging Rock, Carlsruhe, Cobaw.

AN INITIATIVE OF THE ROTARY CLUB OF WOODEND

March 08

A Monthly Community Periodical

First Publication 1997

Volume Twelve No. 2

Lions Art Show upon us this long weekend

Lions members are busy with any number of tasks including painting boards, receiving art works and setting up the exhibition. The Macedon Ranges has again given \$500, as have a number of other people, (still to be acknowledged) for which we are very grateful.

John & his work 'Beth Shan'.

Pictured is a long-time supporter of the Exhibition, John Walsh, with his painting of 'Beth Shan', formerly owned by Stephanie Goss. Stephanie and the new owners Peter and Anne Lane are currently mapping out the future of this 1860 home, so it is an important part of our history. It is hoped to obtain approval for a gallery to feature quality local art, crafts and goods.

John can't recall how many works he has donated to the show, but estimates about 6 over the past decade. Similarly,



Stan Perkins has donated a painting for auction, as well as a new artist, Nicole Jackson. The bidding should be brisk on Opening Night, the only time you will have the

chance to acquire one of these works.

What does the Lions Club need from you, the public?

- Your presence; either at the Opening Night, or during the weekend. See our advert on page 3 for details.

What do you get in return?

- Enjoyment of a great variety of art
- The opportunity to buy something you'll always treasure
- The chance to win a raffle
- Participation in supporting your own community: the money comes back to you
- An educational experience for your children
- If you go to the Preview, a great night out with plenty of refreshments and the best opportunity to buy a work before others.

So make it a date this weekend; Lions are working hard for you; we'd like you to just come along and not work!



A Happy & Safe Easter to all

Ormond College Choir showcases local talents

A reminder that the Choir of Ormond College will perform at St Ambrose Church, Woodend, on **Friday 14th March** at 8.00 pm. This concert will celebrate the launch of the 2008 program for the Woodend Winter Arts Festival.

It will also be an opportunity to hear Kyneton twins Daniel and Matthew Thomson, who have been members of Ormond College and its choir over the past year. Both have also recently been admitted to the rarified ranks of the performance stream in the third year of their Bachelor of Music course at The University of Melbourne.

Entry for the concert is \$10 per person (all tickets are one price, no

concessions) and will be available at the door (cash only).

Further details about the March concert are available at www.woodendwinterartsfestival.org.au where Festival information will be updated after the launch.



Woodend Community and Rotary sponsor 2nd ShelterBox

Due to the generosity of the people of Woodend, the Woodend Rotary Club is pleased to announce that the funds from the two raffles held by the Club in '07 have resulted in the purchase of a second ShelterBox.

A ShelterBox delivers aid and relief on a worldwide basis in the form of material and equipment that provides shelter, warmth and comfort to people displaced by natural and other disasters. Each box contains a 10 person tent, 10 thermal blankets, a multi fuel cooker and ancillary equipment such as water purification tablets, a torch and batteries, spade, rope, plastic bags and so on.

Our first ShelterBox was sent to Nepal, this second box may have already been dispatched somewhere in the world. To find out go to www.shelterboxaustralia.com.au and look for Box Number AUS 2689.

The Rotary Club of Woodend would like to thank the Woodend traders for their generosity in donating goods and services and also the people of Woodend who supported ShelterBox through the purchase of tickets. We aim to fund raise for a third box and donations can be made at any time. Cheques can be sent to The Rotary Club of Woodend P.O. Box 333 Woodend 3442 for ShelterBox '09.

Submitted by Kai Saldaneri, Secretary.

Are you interested in writing?

The *New Woodend Star* is always on the lookout for interesting human interest stories about our local area. If you would like to contribute as an occasional or regular writer, we would love to hear from you. Your contribution can be as often as you wish. For more information, please contact Joy on 5427 4089 or email your details to irene@woodendcopycentre.com.au. We would love to hear from people of all ages who have an interest in many different topics.

Down to Earth Lecture Series

presented by Mt Macedon Horticultural Society

Michael McCoy: Borders – Bold, Beautiful & Sustainable, 12th March 2008

Phillip Vaughan: Modern Australian Plants, Natives for the 21st Century Garden, 9th April 2008

Dr Greg Moore: Trees – the Garden's Framework, 14th May 2008

All to be held at the Mt Macedon Horticultural Society rooms at Mt Macedon. For information, contact Ann Tomlinson on 5422 3621

BGE

Joinery Quality you deserve

• Kitchens • Shop fittings • Bars

BRAD ELSE

Mob: 0412 355 548 Ph: 5422 2517

Factory 2/27 Redesdale Rd., Kyneton

Visit our Showroom 166B Mollison St, Kyneton
11am – 5pm Fridays or by appointment

The New Woodend Star

An initiative of the Rotary Club of Woodend Inc.
The Bank, 75 High Street, Woodend, Vic. 3442
ABN 32 685 225 161 No. A0021518E

Layout & printing by Woodend Copy Centre

For people wishing to submit stories, articles, letters to the publication, simply place the information in the strategically placed drop-boxes. These are located at the Liquor Shop, Collier Office & Business Assist, The Bank @ 75 High Street and Woodend Newsagency.

Circulation: 3050 copies throughout Woodend and district

Disclaimer: The opinions and views expressed by the contributors are theirs alone, and do not necessarily reflect the views and opinions of the Committee of Management, or the Rotary Club of Woodend.

The Committee reserves the right to edit articles for length and clarity.

Committee: Barry Naphine, Ivor Johnson, Claudia Green, Irene Hatcher, Joy Barker and Jane Watters.

Closing date for inclusion of articles for each issue is the 15th of the month prior to publication.

Advertising available

For all bookings and artwork submission please contact Irene Hatcher 5427 3092.

Artwork to email nws@collieroffice.com.au

This newsletter is supported by



ADVERTISERS PLEASE NOTE:

Unless specific dates are given for inclusion – all advertisements will be placed and charged for until notified otherwise IN WRITING.

Woodend Red Cross

Until March 18th, the Woodend Red Cross Unit will be conducting their Annual Appeal Door Knock. Tin rattling and tickets for the Statewide Raffle will be in place during this time. We look forward to your generous support. The next meeting for the Woodend Unit will be held at the SES Building, Urquhart Street, Woodend on Thursday March 6th at 1.30pm. New members are always welcome, so come along and find out about what we do.

Submitted by M. R. Gaal (Hon. Sec)

Senior Citizens

A Committee meeting will be held on 7th March at 10.30am. A fun afternoon and Friday Cards will follow at 1.30pm. Now the big meeting room is free of books, Carpet Bowls will be at 10.30am on Fridays and Cards in the afternoon. Bingo is held at 1.30pm on Tuesdays. All Senior Citizens are most welcome, especially new members.

Submitted by Norma Richardson

Woodend Rainfall Report 2008

Each month we add the rainfall details and the year to date total. Our rainfall report shows 2004, 2005, 2006 and 2007 comparisons. Please note that your own rainfall readings may not exactly match these. These readings are the official BOM readings and have been taken in the same location in Woodend for many decades. All measurements are in millimetres.

	2004	2005	2006	2007	2008	
January	21.2	47.4	49.8	83.5	17.1	Jan
YTD:	21.2	47.4	49.8	83.5	17.1	YTD

Reminder: We are now on Stage 3A water restrictions.

For the year to date 31/1/08 there was rainfall of

17.1 mm

1 inch = 25.4 mm therefore the total year to date is 0.67 inches

Advertising Rates for 2008

New advertising rates per month from 1/1/08

All rates include GST & are priced per month.

Business card size (per month)	\$38 inc GST
Eating Out (per month)	\$31 inc GST
Trade Page (per month)	\$25 inc GST
Quarter page (per month).....	\$85 inc GST
Half page (per month)	\$150 inc GST
Full page (per month).....	\$267 inc GST
Insert (of your printed brochure)	\$180 inc GST

Advertisers: Please note – it is in your interest to book and pay for a year in advance, as a 10% discount applies to any full year pre-paid booking.

This now includes to Trade Page & Eating Out sections.

Any existing pre-paid ads will revert to the new rate on completion of the pre-paid period.

Information for advertisers

Any accounts queries can be made to

Joy on 5427 4089 during office hours.

Mail should be directed to: New Woodend Star, C/- The Bank, 75 High Street, Woodend 3442.

Drop boxes for articles are at: The Bank (75 High Street), Woodend Newsagent, Collier Office & Business Assist and Marks' Liquor Shop.

Copies of the publication will also be available.

Woodend Star Publication Dates for 2008

April	Delivery 7th April
May	Delivery 5th May
June	Delivery 2nd June
July	Delivery 30th June
August	Delivery 4th August
September	Delivery 1st September
October	Delivery 29th September
November	Delivery 27th October
Dec / Jan	Delivery 1st December

Advertisers and contributors are reminded to book in by the 15th of the month with artwork to follow immediately. Changes to advertisements, new advertisements or cancellations should all be made by email or in writing.

Kyneton Physiotherapy

ROBERT ROUSE

B. App. Sc. (Physio) Member A. Physio. Assoc.

Move Well. Stay Well!

Registered for Comcare, TAC, W/Cover, Vet. Affairs
NO REFERRAL NECESSARY

74 High St., (Corner New St.,) Kyneton

20 years on High Street! 5422 2290

Kerrie Hall available for functions

Tucked away in the picturesque Kerrie Valley on the sparsely populated eastern slopes of Mt Macedon, stands the Kerrie Hall, a community owned and run facility. The hall, which was built in 1934, overlooks the Kerrie Reservoir and stands in glorious isolation from other habitation. It is an ideal venue for special birthdays, anniversaries or group functions. It has a functional kitchen with chairs and tressles sufficient for up to 100 people, so a sit-down dinner is possible if required. There is also a stage for theatrical or musical presentations. You could not wish for a prettier, more rustic setting for that special event in your life. This little known gem of the Macedon Ranges can be rented for a very modest sum, proceeds going to the upkeep of the hall. Contact either Marlene Leckie on 5427 0202 or Bruce Donaldson on 5427 0364 for further details or to make a booking.

Woodend Lions Club

Art Show & Sale

7-10 March 2008

Preview Evening

Friday 7th March at 7pm
Raffle, Auction & Opening
Tickets \$20,
includes light supper & wines

Bookings Liz Johnson
5427 1503

300 - 400 Exhibits,
all mediums,
all styles

Art Show & Sale

Labour Day Long Weekend
8th & 9th March at 9 am to 5 pm
10th March at 9am to 4 pm
Entry \$2/\$1

St Ambrose Hall, Templeton St, Woodend

Preview Evening

Friday 7th March at 7pm

\$20 per person, wine and finger food included

Bookings essential, ph Liz Johnston 5427 1503, numbers limited, neat casual



Liz Johnston (03) 5427 1503
Garry Dudderidge (03) 5427 2255 BH



Council's New Service Centre

The Woodend Library has been refurbished to increase the library's floorspace and incorporate the Council's Customer Service Desk, which has relocated from the Council's office at 92 High Street.

From Monday 3 March, a Council Customer Service Officer will be permanently based at the Woodend Library, enabling the library to open for an extra 13 hours per week. The new opening hours of the combined library/council service facility are:

Monday 9.30-5pm

Tuesday 9.30-5pm

Wednesday 9.30-6pm

Thursday 9.30-5pm

Friday 9.30-5pm

Saturday 9.30am-12.30pm (Library only)

From Monday 3 March, the council units that have been based at the Council's Woodend office will operate from Council's Kyneton office. These include: Community Planning and Development; Social Planner; Children's Services; Aged and Disability Services; Youth Services (including a dedicated youth space); Housing Services; Organisational Development (Human Resources, Risk Management incorporating Occupational Health and Safety, Performance Improvement)

For further information: 5422 0333 or email mrcs@macedon-ranges.vic.gov.au

Save your wardrobe.
Save the world.



Autumn in store now.

42 Anslow St Woodend
T 0414 524 423

In front of Cafe Colenso next to the Florist.

Hours Thurs/Fri 10-5 Sat 10-2

Position Vacant — Nanny

A part-time Nanny is required for the month of March (starting asap) for Mondays, Tuesdays and Fridays to do morning and afternoon school runs for 3 of our 5 children, aged 6, 10 and 11. The remaining two, aged 3 and 4, will be in the care of the Nanny during the day. Meal preparation is required for the children. Previous nannying or childcare experience is expected. Driver's license is required. Car will be available for the Nanny to drive children. **Phone Anne-Marie on 0414 232 401.**

Joanne Duncan

STATE MEMBER FOR MACEDON **MP**

Friends,

At the heart of good governance is honesty & accountability, as well as an understanding of the issues confronting the whole of society.

If you have any concerns you wish to raise, please do so.

Feel free to call me on:

5428 2138



Dear Friends

In the hustle and bustle of everyday life as we drop the children at school, run errands and travel to work – it's very easy to get distracted while driving.

Every life we lose on our roads is one too many. Road trauma causes great pain and heartbreak not only to the friends and families of victims but to the whole community. It's often our local family and friends who volunteer with the SES and CFA who are the first to respond to car accidents.

The Victorian Government's ARRIVE ALIVE! program has substantially reduced the state's road toll and has prevented some 580 deaths. Prior to the introduction of ARRIVE ALIVE! the annual road toll was 444, compared to 332 in 2007, a reduction of 25 per cent.

Recently, the Government announced its new 10 year road safety strategy – ARRIVE ALIVE! 2008–2017 that introduces new ways to further improve road safety and create a safer transport system, safer roads and roadsides and protect road users. By 2017, the Government aims to have reduced the road toll by 30 per cent, saving an extra 100 lives a year and preventing over 2,000 serious injuries a year.

There are many ways we can keep the road toll down:

- Remember to slow down to 40kms near schools
- Obey speed limits
- Don't drive while tired, take a break
- Don't drink drive or take drugs and drive

We can all make our roads safer. By working together, we can reduce the amount of serious injury from road crashes and spare many local families the grief of suffering the loss or serious injury of a loved one on our roads.

If you would like more information about the arrive alive! program, please contact my office on 5427 2138.

JOANNE DUNCAN MP

State Member for Macedon

Woodend Produce

31 Brooke Street, Woodend

is your local

ELGAS distributor

Life's Easier with Elgas

5427 2753

Exchange cylinders, delivery, Swap N Go.

Cylinder Refills

SUBSCRIBE TO THE NEW WOODEND STAR

Do you live outside the *New Woodend Star* distribution area? be sure to receive your copy every month by subscribing. A yearly subscription of 11 issues is just \$27.50. Post to *New Woodend Star, C/- The Bank, 75 High Street, Woodend 3442.*

Name: _____

Address: _____

Phone: _____ Enclosed: Cheque/Money Order for \$27.50

Hand knitted. Pure wool. Woh baby!

What's new at Zappa-do!

We have a fantastic new range of baby clothes, including hand-knitted pure wool hats and booties, and an exciting new winter range from Marquise. New bags, new pyjamas and introducing 'alpaca' to Waverley's range of wool and mohair throws and blankets – now is a great time to order for winter.



ZAPPA-do

Bed, Bath and You... and Baby too!

Shop 3, 87 High Street, Woodend. Ph: 5427 1270

Compact Discs Piano Accompaniments Church Organ Multitracks

Performing at the Gisborne Festival on 2nd March!

Mount Macedon Music Studio



Easter School Holiday Music Workshops

*Ensembles and Solo Performances,
Theory and Aural Development,
for Instrumentalists and Singers.
from Wednesday 26th March*

Term Two Lessons commence 7th April

An increasing range of talented specialist staff now enables us to offer tuition for the following instruments:

*Piano; Voice; Bass Guitar; Drum Kit
Guitar - Classical/Acoustic, and Pop/Rock/Electric;
Studio Practice Sessions using Grand Piano or Drum Kit.*

Tuition packages are available that include practice sessions, so you do not need to own your own drum kit or piano to learn!

Contact the Director,

Mount Macedon Music Studio

Linda Ceff

M.Mus, B.Mus (Hons), APRA & VIT reg.

phone: 54261264 or 0437866030

email: mountmacedonmusicstudio@bigpond.com

Tuition Correct Technique Fun Education Workshops Concerts

Community Events Examinations Aural Training Music Theory Music Theory Assistance Compositional Assistance Music Typesetting

Musical Expertise Ensembles Classical Music Jazz Music Popular Music Performances Print Publications

Woodend BATA News

In February 22 local Woodend Business & Tourism Association members meet for monthly dinner meeting at Holgates where host Natasha and Paul Holgate had their inaugural "Dinner in the Brewery". Over the pungent aroma of hops, members were educated in fine art of beer making (and some drinking). Paul showed those in attendance through the brewery and explained the making of their Boutique beers.

The "nibbles" on the tables were three of the barleys used in the making of their beers. The recently-appointed Shire Tourist Development Team Leader, Andrew Carcelli attended the meeting introducing himself to the group along with explaining his role. A number of new local business owners also joined the meeting and all seemed to enjoy the night.

After dinner the executive continued on at the Woodend Bakery Café to proceed on a planning document that they are working through on WBATA. At the meeting many things were discussed: Reports back on WOOMBA, Late Night Shopping, Christmas Shop Window Competition (won by Carasmatic), along with the launching of the new WBATA logo – design by Anne Dornau's (of Zappa Do) husband Michael. The logo was launched as part of a WBATA welcome pack that all members in attendance received on the night – which included many things of interest but most interest seemed to be around the Woodend BATA Traders Scheme that was introduced on the night. Those BATA member traders wanting to participate display a sticker in their shop window notifying other members that a discount will be given at their shop. Member that did not attend on the night will have their packs delivered to them directly. The timing of this document could not be better with WBATA experiencing a spike of 10% in membership as more businesses move to Woodend and existing business come on board to the refocused organization. Any person considering joining are invited to email Vice President, Peter Lane on peter@createnow.com.au for a copy of the pack or to call 0412 029 409 to register interest.

It was also decided at the meeting that to add to the festivity of the monthly markets that traders were asked to hold their own sidewalk sales on the day. A number of traders did so on the date of the last market which for little effort did seem to add an extra flare to the town. One other important item that the executive is working on is a Bush Fire Contingency Plan for the business area of Woodend. Anyone wanting to help draft this plan, Please contact the President Cori on 0419 338 835.

The next meeting will be held on March 11th at Langley and McKimmie Accountants (85 High Street) and the topic will be "How an Accountancy Business Operates" and how your business can benefit from the services they offer. 6:30pm arrival for a 7pm start. Food and drinks will be provided. Cost is \$20 for BATA members and \$25 for non-members. Invites will be sent out by e-mail to all members. If you would like to attend and are not yet a member please fax your interest with contact details to 5427 3434.

And advance notice for April's meeting, which will be held at Braemar on Thursday 17th April, giving members an opportunity to see the hospitality students in action.

For the next month there is also a pro-rata membership of \$50 for the remainder of the financial year. Businesses of any size and industry are welcome to join.

Chiropractor – Mark Brown

- Mark has been practising for the last 6 years in at the Westpac Bank Building, 75 High Street.
- Mark's approach involves massage and stretching of muscles and ligaments before manipulation to provide best results.
- When appropriate, Mark can advise you on exercises to both stretch and strengthen muscles that support the spine.
- Mark has successfully treated problems including shoulder, elbow, wrist, knee and foot.
- Chiropractic can assist in a large range of problems including headaches/migraines, asthma, chronic digestive problems and certain types of neuralgia.

Phone 5427 1456 or 0407 526 403



*Let
Habitat
help make
your house
a home*



102 High St
Woodend
Ph 5427 2100

65 Mair St East
Ballarat
Ph 5333 5525

***Furniture & Homewares
Open 7 Days***

21st Picnic at Hanging Rock

On the day, over 4700 vehicles were at the Rock to celebrate the *21st Picnic at Hanging Rock Display Day*. The total number of vehicles exceeded everyone's expectations and was certainly the largest in the history of the event. The weather was perfect and the surroundings were in great condition after a brief shower the night before.

Cars started arriving at the gates at 7am and continued to pour in until late morning. Everywhere the eye could see was awash with vehicles of every shape, colour, manufacturer and model. This year around 450 motorcycles were also in attendance.

The event is designed for families and enthusiasts to simply enjoy the atmosphere, mingle with friends and partake of the great surroundings. It was pleasing again to note the significant numbers of families at the venue viewing the vehicles as well as the children's entertainment of an Animal Farm, train rides, rocker cover racing, pace painting and sack racing, as well as a wide range of food stalls and sponsors presentations.

Event organisers would like to express thanks to the Macedon Ranges Shire and the local emergency services organisations who assist with this event every year. The event is run by the members of the Macedon Ranges and District Motor Club Inc and occurs every year on the second Sunday in February. Planning for the 22nd Annual event will commence shortly.

Graham Williams, Coordinator, Hanging Rock, MRADMC

Bradley's

Curtains + Blinds

**New showroom now open
Mon to Fri 9 - 5.30 + Sat 10 - 1**



t 5427 2361 fx 5427 1019 72 High Street, Woodend VIC 3442

www.bradleyscurtains.com

TRIPLE



DRIVER TRAINING

Accredited Certificate III and IV Instructor
Servicing Macedon Ranges and Surrounding Areas

Ph. Laurie

**5427 1192
0419 005 185**

Pamela Kell

Remedial Massage Therapist, Level 1 Pilates Instructor

SSNT/AAMT, Workcover accredited

Relaxation, Sports, Remedial Massage

Manual and Lymphatic Drainage

By Appointment

22 Goode Street, Gisborne

5428 1000 0408 093 098

Early mail on the elections

We're now into an election year for local government, and the Macedon Ranges Shire will again be conducting its election by postal voting. This means that all eligible residents and ratepayers will receive their ballot papers in the mail, along with a leaflet detailing information on the candidates and what they are standing for.

You will no doubt also receive separate literature from individual candidates who are seeking your vote for the November 29 poll. It will be a big year for local government generally, as for the first time all 79 Victorian councils will be conducting their elections on the same day.

It's sometimes hard to realise that it will be coming up to three years since the residents and ratepayers voted for me to represent them in Council. A lot has happened since then, and we have together achieved a lot of outcomes of benefit to the residents, particularly of East Ward.

The 2005 election was the first to be conducted by postal votes in Macedon Ranges since council amalgamations in 1995, and seemed to be well received throughout the community. Of the 54 council elections in 2005, all but six were conducted by postal voting.

An analysis of postal voting shows an increased voter participation in postal voting, generally associated with the non-resident ratepayers. It's also more convenient for the

The fencin' fella

- colorbond
- tubular
- timber
- steel picket
- pool

Mini

**Earthmoving
Kanga Loaders**

Attachments include:
rotary hoe, soil leveling bar,
4 in 1 bucket, trenchers,
post hole diggers, tipper

SHAUN BARRON

MOB: 0407 232 900 or 5422 3488 AH

CASTLEMAINE—GISBORNE

CLEANING SERVICE

CHRISTINE ADAMS, FRYERS ROAD, ELPHINSTONE 3448

Carpet Cleaning Specialists

Duct Cleaning, Window Cleaning, etc.

For all your cleaning requirements

- no job too big or too small -

obligation-free quotes

Tel: 5473 3307 Fax: 5473 3310

Mobile: 0419 006 591



bodywise
UNDERWEAR

Now in Woodend - next to Australia Post

**Comfortable wire-free
underwear up to size 22 E/F.**

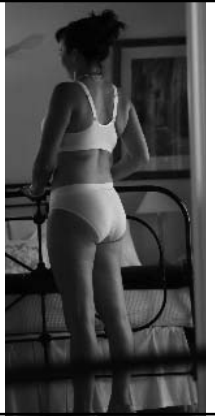
- bras • briefs • camisoles
- swimwear • sleepwear

Phone **1300 66 17 66**

Fittings by appointment only 9.30 to 2.30
Also stocking Est skincare • Queen B candles

• M.I.L.K. books & gifts

www.bodywise.com.au



over-70s voters, who also have a higher participation rate.

Postal voting is also somewhat cheaper to the public purse, and research shows a lower informal vote.

The word on the ward

While we're discussing things to do with elections, Council is also looking at renaming our wards.

Our current naming of East, West and South wards does nothing to reflect the history of our Macedon Ranges region, and I favor further consultation with the community to come up with some names more in keeping with our heritage.

As I said in a media release in April 2006, I favor something that acknowledges our history or natural features. But it's up to you, the residents.

Council will be preparing a process for considering new names, which will involve the community. Stay posted as we work towards the community consultation phase.

Out-of-town trouble

We hear about trouble and vandalism in our towns from time to time, and many people assume that our young locals are at the thick of it. Not so, according to local police.

I'm a Council representative on the Macedon Ranges Local Safety Committee, and the police representatives advise that many of the trouble-makers are from out of town - up from Melbourne and getting up to no good with fights, vandalism and other anti-social behaviour.

So if you see anyone acting suspiciously or aggressively around our towns, particularly if you don't recognise them, give the local police a call or ring Crime Stoppers on 1800 333 000.

If we can nip trouble in the bud, all the better for all of us.

Henry Bleack, Your Local Macedon Ranges Shire Councillor,
5422 7027

**TERRY'S GROUND CREW
MOWING & MAINTENANCE**

0400 909 303

ENJOY YOUR PRECIOUS WEEKENDS

TERRY BARRETT

PO BOX 885 WOODEND VICTORIA 3442

Music Workshops

Mount Macedon Music Studio Easter School Holiday Music Workshops begin 26th March. Ensemble playing, Theory and Aural development for all musicians. Fun, educational and sociable groups with informal performances. Contact Linda Ceff on 5426 1264 or 0437 866 030, or email mountmacedonmusicstudio@bigpond.com for further information.

Hesket Primary School Plant Sale

Sunday 4th May 2008, 10am till 4pm

Hesket Primary School plant sale is on again with our new major plant suppliers, Chris & Maree's (Hello, Hello!). So this Autumn there is no need to go to Melbourne or Bendigo - come and give support to our small local school where a hard working community pulls together to create a family atmosphere for the mutual benefit of students, teachers, families and the wider community. Hesket Primary School is located midway between Woodend and Romsey on the Romsey Road, Hesket.

Autumn is the best time to establish plants in your garden and where better to browse and shop than in the beautiful country setting of our school. On offer there will be quality plants, Devonshire teas, cakes, BBQ and face painting. While you are there visit our magical fairy garden, you never know you may even see a fairy or two!

Stall holders wanted - please contact Hesket Primary School on 5427 0330 or Jacky on 5427 0576 or 0417 722 575.

Hesket Primary School, Romsey Road, Hesket 3442



Lachlan Fleming

CARPENTRY

REGISTERED BUILDING PRACTITIONER

0401 499 898

EXTENSIONS RENOVATIONS
ALTERATIONS

**WOODEND SELF
STORAGE**



- Store your business documents, stocks or furniture
- 7 day access
- 33 individual sheds
- Affordable prices
- Insurance available

For any enquiries
please contact
Leonie or Dennis Barker
on **5427 4175**

Australian Breastfeeding Association—Woodend & District

I read a fascinating article in the latest ABA "In Essence" magazine about "Baby-Led Weaning" by Gill Rapley. Weaning is not defined as the cessation of breastfeeding, rather it is the beginning of the introduction of solid food (solids are not recommended before the age of 6 months). Many people believe that solid food must be introduced using soft pureed food and a spoon. This article presented an alternative to this view, allowing babies' "self-feeding" abilities to evolve from exclusive breastfeeding to the inclusion of solids. A baby is therefore provided opportunities for "self-feeding" by exploring, grabbing, and bringing food to their mouth. The article discussed safety and the issue of choking, concluding that for a baby to manage lumps safely, he has to be sitting upright and put them into his mouth himself. Nature has ensured that babies develop the ability to chew before they are able to take food to the back of the mouth for swallowing, thus providing a safety mechanism reducing the likelihood of choking for self-feeders. I suggest that anyone contemplating this method of introducing solids, to research the subject thoroughly. The author has her own DVD on the subject entitled "Baby-Led Weaning".

Our next two local meetings are: 19th of March at 13 Heron Street Woodend (look for the ABA banner) with a discussion on "helping you and your baby develop a secure attachment" (Ph. 5427 2398), and the 16th of April, a coffee morning at Piccadilly Café Woodend. Both groups start from 10am and have a qualified breastfeeding counsellor present. All sorts of mothers have come to ABA groups, mothers who are breastfeeding, mothers who have finished, mothers who have fed for a short time, others a long-time. Most mothers come to meetings for a chat and a chance to meet other mothers! For those considering joining ABA there are lots of benefits, including a free book, discounted breast pump hire, and a bi-monthly magazine. For breastfeeding counselling the 24 hours helpline is 9885 0653 or ring your local counsellors, Heather 5427 2398, Louise 5427 1831, or Leonie 5427 1840.

Submitted by Heather Steele

Kirsty Nuttall

MACEDON RANGES PICTURE FRAMING SERVICE

By appointment only
Phone/Fax: 5427 3511
Mobile: 0417 337 857

WARNER'S JEWELLERS

EST. 1912 ~ 4th Generation Jewellers

97 High Street, Woodend 3442
Tel: 5427 1573

**Manufacturing Jewellers and
Diamond Ring Makers**

Stocking: Portmeirion, Whitehall,
Queens, Pimpernel, Royal Doulton,
Cherished Teddies, Royal Sengalor.

GARAGE DOORS

ELECTRIC GATES • SOLAR GATES
SELF OPENING GLASS DOORS

Ken Ross

0427 661 543 5422 7507

Central Highlands Doors & Gates

Serving Kyneton & Woodend



Collier Office
and Business Assist

Computer Sales and Service

**Computer hotspot with
internet access now available!**

- Repairs & servicing to your computers
- Computers & laptops
- Software & hardware sales
- **We only use and recommend quality brands**
- General computer accessories
- Largest range of laser cartridges in the region
- Installation & data transfer included with all computer sales
- **Our \$69 'Spring Clean' will get your computer running at its peak performance**

**10% off your future printer
cartridges when you purchase
your new printer from us**



Shop 5, 130 High Street 5427 3092

**All news items, articles and community
news columns must be received by 15th
of each month.**



a few good
WORDS



Editorials, Publicity, Advertising, Proof-reading, Letters.

Nadine Hartnett
Freelance Writer

0439 399 838
nhartnet@bigpond.net.au



Dinner & Dance

MS

MACEDON SPA

Saturday, 5th April

Join us for a
three course
meal, drinks
at bar prices
and the sweet
sounds of:

**REBECCA JAMIESON
AND BAND**

Tickets are just
\$85pp.

Seating is very
limited so call
5426 4044
to make a
booking now!

www.macedonspa.com.au

Eating Out, In & Around Woodend

The Bentinck
of Woodend
CONFERENCE - WEDDING - RESTAURANT

RESTAURANT NOW OPEN

Dinner
Thurs - Sat from 6.30pm

Sunday
Breakfast from 8 am
Lunch from 12 pm
Afternoon Indulgences from 3pm

The Bentinck
8 Carlisle Street WOODEND VIC
Ph: 5427 2944

Book Now for a unique dining experience

Schatzi's Frank & Rose Gorlitz

Open 7 Days
8am till late
breakfast, lunch & dinner

For Bookings
Ph/Fax 5427 4447
Mobile 0403 423 537
"Where Lovers of Food Eat"

* FAB FOOD
* FUNCTIONS & CATERING
BY ARRANGEMENT

Bookings Essential
BYO wine only
Light Snacks Mondays
Free entry for
Macedon Ranges residents

Hanging Rock Café & Country House

Tel: 5427 0295
Large range of Australiana Gifts

MACEDON RANGES **MALOAHOUSE**
GOURMET DELIGHTS

Cafe Foodstore
Take home meals
Corporate catering

Stop off for urban essentials such as Phillippa's bread, Jasper coffee, Joseph Olive Oil, Woodside Edith Cheeses and you may come away with an antique dresser. Other provisions to impress are local including Holy Goat Cheeses, Macedon Ranges Grove Olives and Kyneton Oil.

DENISE GRANTHAM OWNER/MANAGER
93 High Street, Woodend VIC 3442
T: 5427 1608 F: 5427 3226 M: 0411 096 965
Email: malohouse@bigpond.com
Open: Tuesday-Friday 10am-6pm
Sat 9am-4pm Sun 10am-4pm

Not Just Fudge
126 High Street, Woodend

Home-made Fudge,
Natural Ice Cream, Coffee,
Tea, Herbal Tea, Milk & Thick Shakes, Cakes, Sandwiches,
Freshly Squeezed Fruit & Vegetable Juices

Ph: 5427 2210
Fax: 5427 2880

KYNETON BOWLING CLUB

Newly opened-out beautiful dining room lends itself to all celebrations. Our Chef prepares wonderful culinary delights using superb fresh produce.



Lunch: Tues - Sun 12pm - 2pm
Dinner: Mon-Thurs 6pm-8.30pm, Fri & Sat 6pm-9pm
Bookings essential
Phone: 5422 1902
Pot 'n Parma night every Tuesday for only \$12.50!
(or a glass of house wine)
Mollison St, Kyneton

Small Eating Out advertisements (65mm x 43mm) are \$31 per month - book & pay for 11 and get 10% off.

Colenso **Cafe Colenso**

Fabulous coffee
Breakfast-brunch-lunch
Freshly baked cakes and bread
Fully Licensed & BYO

Now open Wednesday to Sunday 8.30 - 4.30

42 Anslow St, Woodend Phone 5427 2007

Regular business card advertisements (90mm x 55mm) are \$38 inc GST per month - book & pay 11 months and get 10% off.

This Summer, start your day on top . . .

Top of the Range
Licensed Cafe & Gallery
is now open for breakfast
Sat & Sun
from 8am - 11.30am



Top of the Range
Licensed Cafe & Gallery
Mt Macedon

Come & enjoy an early morning walk, sit back and watch the glorious views or read the papers while enjoying bacon & eggs, hot pancakes or eggs Florentine.

We do fabulous coffees and offer a great variety of teas. Dogs on leads are welcome in the park and can be accommodated outside the cafe.

To make a booking please ring 5427 3466
400 Cameron Drive Mt Macedon VIC 3441
At the top of Mt Macedon adjacent to the Memorial cross.

Phone 03 5427 3466





victoria HOTEL

WOODEND

Bistro

Open 7 days lunch & dinner
Daily blackboard specials
Macedon Region wines, open fires.

Bar

Counter meals daily
Fridays tradesman's lunch — \$10 pot & parma
Match your wit against "Barry"
Digital video jukebox on plasma screen

Function Room

Available 7 days
Private parties, meetings & celebrations
Seated dining for up to 80 guests
Private bar, open fire
Balcony views of Mt Macedon

Bookings 5427 2721

67 High Street, Woodend

www.vicwoodend.com.au

GISBORNE PEAK WINES



Short Road, Gisborne South

*Wonderful wines &
wood-fired pizzas*

Casual, fun & friendly. All weather venue

Tel 5428 2228

www.gisbornepeakwines.com.au



*Rock View Homestead
Receptions & Functions
Ph: 5427 2076*

*Restaurant, Roasts & Local Wines
Sunday lunches available pre-booking only
On Mt Macedon Rd, between Braemar College
& Straws Lane*

5427 2076



Kyneton Ridge Estate

MACEDON RANGES

Open Weekends
tastings • pizza • coffee

Wine crafted with pride.

Cellar Door
*Open Saturday, Sunday and
Public Holidays 10 am to 6 pm
Wine tastings
Delicious pizza
& coffee*

Phone: 5422 7377

Kyneton Ridge Estate
517 Blackhill Road, Kyneton
enter via Halloran's Lane

www.kynetonridge.com.au

HOLGATE'S BAR & RESTAURANT

Microbrewery Hotel with cosy
open fires, stained glass windows
and friendly atmosphere. Award
winning local beer. Delicious
meals including house-made bread, pasta and desserts.
Function room and stylish accommodation now available.

Open for Lunch Tues-Sun. Open for Dinner 7 Days

79 High Street, Woodend

Ph 03 5427 2510



Small Eating Out advertisements (65mm x
43mm) are \$31 per month - book & pay for 11
and get 10% off.

WOODEND Proud to be Pokie-free

Fringe Benefits choir forms

Have you marvelled at the Choir of Hard Knocks? Do you wish you could be in it? Well now you can! We announce the formation of the Fringe Benefits Choir. This choir will be starting in Kyneton and is for anyone in the Macedon Ranges Shire who is feeling isolated, lonely, disadvantaged, or for any reason is cut off from the mainstream razzamatazz, and all the stuff that money can buy.

You do not have to be able to sing at all and you certainly will not be asked to audition. The choir is for anyone 15 years or older, whatever their class, colour, creed or religion, who is isolated or disadvantaged and wants to meet up with other kindred souls and have a great time, at the top of their voices.

If you are interested just come along to the first meeting and meet the choir leader Annie Coyne. You do not have to

All news items, articles and community news columns must be received by 15th of each month.



**Macedon Ranges
Real Estate Specialists
Open SEVEN Days**
108 High Street, Woodend
Phone (03) 5427 2277
www.connallys.com.au



**Total
Financial
Solutions
Australia**



*Helping you save
for a
"Rainy Day"*

Bob Nixon

B.Com., Dip.Ed., Dip.A.I.I., Cert. IV Fin. Plng., F.A.F.A.

**Authorised Representative,
Total Financial Solutions Australia Pty Ltd**
ABN 58 003 636 968 AFSL No.246545.

Shop 10, 34a Hamilton Street. Gisborne Vic 3437

Ph: 03 5428 0123

Fax: 03 5420 7710

E: bobnixon@netcon.net.au

W: www.bobnixon.com.au

enrol or tell us beforehand, just come along. There will be no cost. Tea, coffee and cordial will be provided.

For transport enquiries phone the Kyneton Community & Learning Centre on 5422 3433. The first meeting will be held on Thursday 6 March, 4.30pm to 6pm, Anglican Church Hall, 22 Yaldwyn Street West, Kyneton.

FAIRHURST CONVEYANCING

For all your

Property Transfers

Ring Sue Fairhurst on

5427 2382

27 Urquhart Street, Woodend

MVCA & AIC

EpiGenetics

Healthy & Ageless Naturally!

- **Preview sale – up to 50% off** Fair Trade gifts and furniture
- Hand-carved, sustainable hardwood timber
- Come in and view our new room
- Animal bookcases and drawer sets were \$160, now \$120 each

Shop 8/81 High St Woodend

Ph: 1300 737 146

Career Natural Health

Café Nights include a variety of nice meals & Coffee

Starts at 6pm
Woodend
Community Hall

**Sunday
March 30th**

Contact
Kath Helyar
5427 3605
or Church Office
5429 6327

Living Word



Guest Speaker
Michael Capon
MAF area Representative



MAF is a not-for-profit team of aviation professionals providing air transport in places of deepest human need – remote places where flying is not a luxury, but a lifeline. For almost 60 years, MAF has flown over jungles, mountains, swamps and deserts to bring thousands of men, women and children medical care, emergency relief, long-term development and Christian hope.



*Living Word meet every
Sunday Evening
for a
Contemporary Christian
Church service*

Hay To Help

The end of Winter 2007 saw most farmers in Victoria with empty haysheds and no reserves of stockfeed. In some areas the fodder growth has been so poor that there may not be sufficient hay to get through Winter 2008 and by then hay prices could be unaffordable.

In 2006 there was a magnificent response from the local community to an appeal by CBMA (Christian Businessmen Australia) Macedon Ranges Group for hay to assist bushfire victims in the Grampians. Some 60 tonne was sent to assist affected farmers who were highly appreciative.

Although Kyneton district this year has had a much better hay season than most areas, it is still unlikely that any such large amounts could be spared from local needs.

CBMA is compiling a hay bank register of small donations that could be used in a quick response to alleviate distress in the most severe individual disaster situations. Larger organizations can provide support but this may take time.

Knowing that someone cares helps to reduce depression and its serious consequences. The project has the support of the VFF and "Beyondblue" are being kept advised.

If you could donate even a few bales please contact Frank Jenner on 5422 1869 or Bob Evans on 5427 0784. Cash donations to assist with transport and other costs are also needed. Please contact Leo Ramsdale, Treasurer, on 5422 1913.



HORSEMANSHIP

Steve Brinkworth

25 years' experience

Phone 0417 864 062

*Calm, effective methods suitable
for all disciplines*

Australian distributor for



*'Barefootin
Naturally'*



T.J. SCOTT & SON

Funeral Directors

- Serving the Macedon Ranges for almost 70 years
- Available 7 days a week, 24 hours a day
- Specializing in Pre-paid funerals

For further information, call the Scott family:
John, Kelly, Jack, Paul & Daniel.

5 Piper Street
Kyneton
54226455

46 Aitken Street
Gisborne
54284155

www.tjscottandson.com.au
tjscott@kyneton.net.au

KYNETON EQUIPMENT & PARTY HIRE

FOR ALL YOUR HIRING NEEDS

8-12 BEAUCHAMP ST PHONE (03) 5422 2311
KYNETON VIC 3444 FAX (03) 5422 2930

Email: kynhire@bigpond.net.au
website: www.kynetonhire.com.au

Woodend Art Group

A number of members have been going out into the local landscape on Tuesday mornings to paint some of the many beautiful and interesting features of the area. We like to challenge ourselves with a wide variety of subjects and aim to cope with all weathers. Occasionally, we go out on full day excursions further afield. A little later down the track we will put examples of our work on display so look out for this. Also, we welcome any new members who might be up for some adventure.

Ring Pamela 5427 1659 or Marian 5426 1449 for any information regarding Woodend Art Group activities.



Home
Kitchen
Giftware
OPEN 7 DAYS

**Special prices on
remaining
Portmerion pieces**

Limited stock

Blue Orange Concepts

Shop 2, 130 High Street, Woodend. Ph 5427 4500

Woodend Prospecting Club

Our second meeting was well attended, with discussion on prospective digs. We had an opportunity to examine a gold nugget and some old bottles. It seems there is still more left in the ground for everyone to find. After pouring over the maps, we confirmed a site not far away. On March 16th for those who would like a full day, we will meet near the Woodend Information Centre and then head off to walk around the forest. Bring a hat, good walking boots, snacks and water bottle. If the weather looks too bad, we will adjourn instead to a coffee shop.

If would be helpful if those interested in attending could ring 0414 893 446 to confirm their attendance, as we need to coordinate the transport and the rations.

Submitted by David from the Woodend Prospecting Club

NORTH CENTRAL ACUPUNCTURE & CHINESE MEDICINE

仁
心
仁
術

Gina Pilven

BaHSc: Chinese Medicine

Acupuncturist

Chinese Herbalist

Health Rebates Apply*



Westpac Bank Building
11/75 High Street, Woodend

0405 467 418

'Special Events' is proudly sponsored by the 19th HOLE SHOPPING CENTRE

Upcoming Events and Meetings

March

- 6 Film, *Who Killed the Electric Car*, Woodend Neighbourhood Centre, 8 pm
- 6 Meeting for Choir of Hard Knocks, 4.30 pm, Anglican Church, Kyneton
- 6 Woodend Red Cross meeting at SES Building, 1.30pm
- 7 Service for World Day of Prayer at St Mary's Parish, 7.30 pm
- 7-10 Lions Club Art Show at St Ambrose Hall, Preview Evening 7th March
- 14 Ormond College Choir at St Ambrose Church 8pm, tickets \$10 at door
- 15 Bat Evening at Hanging Rock Reserve 5pm
- 16 Lions Market
- 16 Prospecting Club meeting
- 17 Woodend Neighbourhood Centre AGM 1pm
- 19 ABA Meeting
- 21 Good Friday
- 21 Ecumenical Stations of the Cross at St Ambrose Church, 10.30 am
- 23 Easter Sunday
- 24 Easter Monday
- 29 Giant Garage Sale at Newham Hall
- 30 Cafe Night at Living Word Church - Woodend Community Centre, 6.30 pm

April 2008

- 5 Bee Workshop at Newham Hall 5427 0408
- 5 Dinner & Dance at Macedon Spa with Rebecca Jamieson & Band \$85, 5426 4044
- 12 Woodend Autumn Carnival, hosted by St Ambrose
- 16 Lions Market
- 16 ABA Meeting
- 20 BMC 100km Classic mountain bike ride, ph 5427 2662
- 25 Anzac Day, Dawn Service Mt Macedon, March & Service at Woodend in morning

May

- 4 Heskett Primary School Plant Sale
- 18 Lions Market

June

- 6-9 Woodend Winter Arts Festival, www.woodendwinterartsfestival.org.au



<i>Ian Marks Liquor</i> 5427 3961
<i>Blue Orange Concepts: homeware</i> 5427 4500
<i>Kosmac & Clemens: optometrists</i> 5427 4577
<i>Woodend Pizza & Pasta</i> 5427 3777
<i>Coles Supermarket</i> 5427 2377
<i>Collier Office & Business Assist and Woodend Copy Centre</i> 5427 3092
<i>Pets Haven</i> 5427 3603
<i>Mitre-10 Woodend Hardware</i> 5427 2314
<i>BP Woodend</i> 5427 2248
<i>Target Country</i> 5427 4366
<i>Macedon Ranges Travel Services</i> 5427 4777
<i>Grand Lifestyle Estates</i> TBA
<i>Woodend Cycles</i> 5427 2662
<i>Salvation Army Family Store</i> 5427 4421
<i>Loose Change Bargains</i> 5427 4466
<i>Bodywise Underwear</i> 1300 66 17 66
<i>Australia Post</i> 5427 2600
<i>Jasper Art & Handwork Supplies</i> 5427 4455
<i>The Spa Beauty Therapy Centre</i> 5427 3322
HIGH STREET SHOPS
<i>Color Me Cooper: clothing/gifts</i> 5427 1454
<i>Chelleon For Hair</i> 5427 3246
<i>Not Just Fudge</i> 5427 2210
<i>RT Edgar (Macedon Ranges) Real Estate</i> 5427 1222
<i>Woodend Bakery Cafe</i> 5427 3434

Australian Breastfeeding Association, Heather 5427 2398	Probus, 5427 2003
Daylight Masonic Lodge, 5427 2480	R.S.L., Anslow Street 5427 3122
Friends of Macedon Ranges Library, Chris/Bill 5427 2469	Red Cross, 5427 1260
Garden Club 5427 3834	Rotary Club of Woodend, meetings weekly at Holgate's Leadlight Room, Kai 5427 1029
Living Word Christian Church 5429 6327	St. Mary's Guild, 11am, 4th Wednesday of month
Historical Society, Courthouse, 5427 2523	St. Mary's Street Stall, 9-12 noon outside Woodend Newsagency (2nd Sat of the month)
Macedon Ranges & District Motor Club, 10 Webb Cres, New Gisborne 1st Wednesday each month 8pm	Woodend & Five Mile Creek Landcare Group, Jo 5427 1909 or Doug 5427 0666, 3rd Tues Meeting, 4th Sunday Working Bee
Macedon Ranges Animal Aid, Buffalo Sports Stadium, 5427 1752	Woodend Angling Club, RSL Hall, 5427 2395
Macedon Ranges Bridge Club, 5427 4440	Woodend Art Group, Railway Station, 5422 6172 or 5427 1659
Macedon Ranges Families of Children with Disabilities Support Group, 5427 3365	Woodend Bird Observers, 3rd Sat of month, Bruce Donaldson 5427 0536
Macedon Ranges Residents Assoc. 5427 1481 or 5427 2651	Woodend Business & Tourism Association, Cori 5427 3434, 2nd Tues of month (BATA)
Macedon Ranges Communicators (ITC), 5427 2669	Woodend Lions Club, Meetings 2nd/4th Wednesday each month, phone Janelle Robbins 5427 1704
Macedon Ranges Photographic Society, 1st Tues of month, Ron Mathews 5427 3284	Woodend Model Railway Club, Buffalo Stadium
Macedon Ranges Social Club (activities for singles over 35) phone 5427 1247 or 9744 2697	Woodend Pony Club, 5427 0487
Neurological Support Group "Contacts", Woodend Community Centre	Woodend Senior Citizens Club, Comm. Centre
Panic & Anxiety Group, 5427 8256	Woodend SES Training Nights, Urquhart St
Parents & Carers of Children with Special Needs, Woodend Community Centre	Woodend Winter Arts Festival Inc., Jacky 5427 1560 or Irene 5427 3092
	CLUBS: PLEASE KEEP THESE DETAILS UP TO DATE



Contemporary Textiles Award, June 08

\$250 prize in each category with an overall prize of \$750
TEXTILES CATEGORIES (Theme is Gold). Embroidery of Original Design, Mixed Media, Working with Yarn, Pigment, painted, dyed fabric, Wearable Art, Modern Interpretation of Traditional Ethnic Style. \$10 per entry per work non-refundable. Students FREE. Entries close 2nd May 2008.
Open Wednesday to Saturday 12pm–5pm & Sunday/Public Hols 10am–5pm
42 Hunter Street, Castlemaine ~ Ph: 5472 1032
admin@budacastlemaine.org www.budacastlemaine.org

ZUMSTEIN



Zumstein Pty Ltd
Factory 1/32 Brooke Street
WOODEND VIC 3442
Ph 03 5427 4579
Fax 03 5427 3559
Mobile 0412 138 364

DESIGNER AND MAKER OF FINE FURNITURE AND JOINERY

solid and veneered furniture
external and internal doors
wardrobes, studies
laundries
bathroom furniture

“Third generation woodwork really shows”

Churches 'R' Us

Holy Week & Easter Services in Woodend

St Mary's 5427 2460

Thurs 20th 7.30 pm Holy Eucharist
Fri 21st 12 noon Good Friday Liturgy
Sat 22nd 8.00 pm Easter Vigil
Sun 23rd 10.30 am Holy Eucharist

St Ambrose 5427 2690

Wed 19th 7.30 pm Parish Penitential Service
Thurs 20th 7.30 pm Mass of the Lord's Supper
Fri 21st 10.30 am Ecumenical Stations of the Cross
Fri 21st 3.00 pm Celebration of the Lord's Passion
Sat 22nd 7.30 pm Easter Vigil Mass
Sun 23rd 10.00 am Mass

St Andrew's 5427 2761

At time of printing these were not available

Living Word 5429 6327

Fri 21st 6pm Passover Service / meal, Romsey
Sun 23rd 10am Morning Easter service, Romsey
Sun 23rd 6pm Easter Service Woodend Community Ctr

Ash Wednesday fires – 25 years & 2 weeks ago

When you live in a fire prone area one of the most important things you should do is prepare a Fire Safety Plan, and it is never too late to start putting one into place if you don't already have one.

Despite the fact that summer is officially over, now that we are into March, the high danger period is far from over and the Fire restriction Period is still in place. Just remember, 25 years ago the Ash Wednesday fires had started only a few weeks before this time.

The region also still has plenty of dangerous long grass this season, after a strong Spring growth period, and for the first time in many years this is close to 100% cured or dried. So there is still plenty of potential for major grassland or bushfires.

Every home is different, which is why every family needs to develop an individual fire plan. What is right for your neighbour may be wrong for you. You must be confident that you are making the best possible decision for the safety of yourself and your family, and the survival of your property. If you have planned ahead and followed through with good preparations, your risks will be lowered.

Once you have made your plan, you then need to prepare for it. The first and most important decision you must make is to decide whether or not you plan to stay with your home. You have a right to stay if you wish. The decision to evacuate is yours.

Homes occupied by able-bodied residents during a bush or grass fire are more likely to survive because small outbreaks on the structure can be extinguished quickly by the occupants. However, you must be properly equipped and mentally prepared to fight the fire.

When the time comes to put your plan into action, be decisive and stick to your plan.

Here are some important points to consider:

- Safety of children, elderly or handicapped members of the household, as well as pets and livestock.
- Your own physical and mental capability to cope with a fire.
- Whether or not your home can be safely defended. Is fuel reduction work properly maintained? Are water supplies sufficient? Is the structure sound, or are there many crevices where sparks can catch and ignite?
- Do you have basic fire-fighting equipment – buckets, hoses, etc.?

Member Profile – Our own 'Mr Magic'

Sydney Swans star Michael O'Loughlin is known as 'Mr Magic', which is also an apt description for the Woodend CFA's own Mick O'Loughlin.

He was born in Beechworth, where his father was the resident officer of Beechworth Fire Brigade and the family lived in the house that was attached to the Fire Station. So, he naturally grew up surrounded by all brigade activities. His mother was the brigade's communication officer and his brother also joined the brigade when he was old enough.

Mick joined the Beechworth Rural Brigade when he turned 16 ... "It was just part of our family's daily life that prompted me to join". That was 28 years ago.

He left Beechworth when he was 21, and worked as a chef at various hospitals. The growing O'Loughlin family moved to Woodend 18 years ago, having lived in Sunbury for a while (where was also a member of the CFA), and Mick joined the Woodend CFA brigade virtually immediately. He is now a Prison Industry Supervisor at the Loddon Regional Prison Castlemaine, while his wife Karen is an Intergration Aide at St. Ambrose Primary School.

Photographs by Marnie
Capturing treasured memories to last a lifetime

Marnie Tole
Photographer

03 5427 4668 0405 326 324
Woodend marnietole@yahoo.com.au

He has held various officer positions at Beechworth Urban, Sunbury and Woodend brigades, including Foreman, 2nd, 3rd and 4th Lieutenant, PFA/FEM Officer and Safety Officer.

What does he enjoy about the CFA? "I enjoy the camaraderie that exists both within the brigade and the association in general. It is really like one big family with members from all backgrounds joining together to give their bit back to the community".

What are your most memorable moments in the CFA thus far? "Being selected to take part in the inaugural CFA Chairman's Scholarship (now called Challenge) It was a two week outward bound course that was held at Fiskville and on location in East Gippsland. There were 16 senior participants selected from all over the state, and involved team building exercises including abseiling, white water rafting, caving and bushwalking. It was a great experience and the CFA continues to offer this chance to members to this date.

"Also attending many fires across the state. The Australia Day campaign fires in northeast Victoria 2003 hold special memories for me as I was assigned to the Beechworth /Stanely areas, the same area that I grew up in. It was strange to go back there years later to help defend the townships".

Your interests/hobbies? "Having six children there is not much time for my own hobbies, but going to their various sporting events fills in most weekends. If time and water levels permits, I enjoy freshwater fishing.

"Having been a member at Woodend for the past 18 years, I have witnessed a lot of members come and go. During the last couple of years we have had a lot of new members join and stay. The diverse group of people in the brigade today creates an enjoyable and easy-going atmosphere. I would encourage anyone interested in joining to come along and see what it is all about".

For further information contact Captain Mick Christie on 0419 870 601, call the Woodend CFA on 5427 2356, or visit the station in Urquhart Street. Or visit the CFA website: www.cfa.vic.gov.au

Submitted by Mike Dornau, Lieutenant Woodend CFA.

CHINKA STEEL CONVEYANCING
FOR ALL YOUR
PROPERTY SALES AND PURCHASES

RING CHINKA ON
03 5427 2477

74 HIGH STREET WOODEND 3442

Nature's Garden
Quality 100% Organic Produce

**DISCOVER THE
HEALTHY BENEFITS OF
AN ORGANIC LIFESTYLE**

At Nature's Garden, our aim is to provide you with the highest quality 100% certified organic fresh fruits, vegetables, produce and groceries, combined with friendly service and advice, and competitive prices.

We also offer FREE HOME DELIVERY with every seasonal fruit/vegie box ordered to be delivered in Woodend or valued over \$50. For all orders under \$50 delivered outside Woodend, there is a \$5 delivery fee.

RED BEARD BREAD DELIVERED FRESH EVERY DAY FROM TUESDAY TO SATURDAY

Call in and see our extensive 100% organic range at Shop 4A Collier St, Woodend (cnr Anslow St) or call 5427 4406.

Naturally, better products



NGW2474

Potential Threat to Bees

There is world wide concern about 'colony collapse disorder' (CCD) which has caused wide-spread loss of commercial bee hives in North America. There is debate about the exact cause, but it means that there may not be enough bees to pollinate millions of dollars worth of agricultural crops including almonds and fruits.

While many people have heard about CCD, fewer can explain how we get different flavours of honey, have extracted honey from the comb or have seen the inside of a beehive. Most know about the queen, but who else makes up the hive social structure – and is the Bee Movie accurate?

Jim Sansom of Black Hill Apiaries will cover all these aspects of bees and will also show the practical side of beekeeping, with local bee-keeper Graham Connell, in a full day Bee Workshop at Newham on Saturday April 5th.

The workshop will raise funds for the Newham Hall restoration. For information or an enrolment form ring Jim or Jenny 5427 0408.

E'Clips Hair & Beauty

Ph: (03)54 273 822
Shop 3/115 High Street
Woodend 3442



Relax ... we understand it's all about you!



**ADVANCED
EQUINE
DENTISTRY**
YOUR VETERINARY PROFESSIONAL

Dr Shannon Lee BVSc
0418 598 621
we come to
YOU!

Mobile services for Macedon Ranges of Victoria
www.advancedequinedentistry.com.au

BodyMinding
alexander technique: an education for living well.

Alexander Technique
Reduce, manage or eliminate **stress headaches, muscle and joint pain**. The Alexander Technique addresses the underlying problems and puts you back into control for yourself.

Margaret McGill has been teaching **Alexander Technique** for more than 20 years.

Contact **Margaret** on **5428 6461** for further information.

A grip on your fears

by Kathy Mexted

They're out. Not the cricketers, and not flared pants. It's the snakes. I've seen 3 and a half this week and my husband tells me I'm paranoid. I have to agree.

The reptophiles will espouse the virtues of the snake's important place in the food chain, about the need for tolerance in nature and the old "they're more scared of you than you are of them". Fine and beaut, but nothing could appease my palpatating heart when I thought I'd been bitten the other day while mowing the lawns, any more than you could convince Henry Lawson's Drover's Wife to get out of the kitchen and go t' bed.


We all know the tropics are good for a snake story, and heading to Cairns for three years, I tried to keep a lid on my fears.

Upon our arrival, there was a timely picture in the local paper of a young girl and her kitten. On the back step of their suburban rainforest home, she had found the kitten being devoured by a python. Screaming loudly as she did, the father arrived and extricated the kitten, reviving it with CPR. 'Where the hell has he brought me?' I thought. 'Only in Qld' I hear you say.

Then there was the group of golfers – and you know how they hate to be disrupted – who watched in horror as a massive python dropped from a tree, and landing on the golf course proceeded to devour a whole wallaby joey, with nary a thought nor care for the rules of golf.

But no tropical snake tale would be complete without the one that happened just prior to our departure. A man got up to go to the toilet at some unholy hour, and heard his girlfriend let out an unholy scream. What presented when he switched on the light was a large python firmly attached to her face. Top fangs on her eyebrow, bottom fangs on her cheek. One can only imagine the fiasco as he reefed it off, and then rang the ambulance, the snake catcher, and the newspaper. Snake escaped to the roof of the house, and girlfriend escaped with a black eye, and a huge and lasting fear of the dark no doubt. The popular theory was that the python was probably quite happily snuggled up there with them somehow, and the boyfriend disturbed it when he got up. To be fair, they also lived on the edge of the rainforest, which is why I lived in airconditioned, tightly screened suburbia. With no desire to be at one with nature, I was just doing my time – keeping a grip on my fears (and my babies).

(Keep an eye out for more of Kathy's stories in future New Woodend Star editions)



**Radiant
Conveyancing**

Buying – Selling – Quality Service
Kaye Anderson
Ph 5422 2401
6 Jennings Street, Kyneton

**"Magnificent" Art
MAD Gallery & Café**
19 High Street, Lancefield
Tel: 5429 1432
Web: www.madgallery.com.au
Open everyday 10am – 5pm
We're proud of our coffee and promise you the best coffee around, or your money back!

OPPORTUNITY NOW AVAILABLE FOR LEASE IN WOODEND



Factory in light industrial area
220 Sq Mt plus yard, 1-tonne Overhead Crane
Includes Office (infront)
Kitchenette, Toilet & Small Storeroom



Contact Ivor Johnson 5427 4089 Mobile 0407 273 961

Woodend Autumn Carnival

Hosted by St Ambrose School & Parish, Saturday April 12

Fancy a spin on a Paratrooper, conquering a climbing wall, eating delicious Dutch pancakes or winning a brand new Cubby House? These are just some of the new activities and attractions on offer at this year's Woodend Autumn Carnival. If you didn't get the opportunity last year, there's another chance to experience a view of Woodend from a crane, thanks to Kyneton Crane Hire.

There will also be trampolines, pony rides, two jumping castles, a giant slide and trackless train. One of the most popular attractions is the plant stall, while the pet competition is part of a fun line-up of entertainment on the school oval.

The Carnival, which will be held in the school grounds and parish hall from 9.30 am to 2.30 pm, is St Ambrose's major annual fundraiser each year. It raises money to pay off the \$220,000 loan that was taken out to build Stage 2 of the current school – this includes the library, a classroom and the furnishings. Money raised from previous Carnivals/

Fetes has contributed around \$100,000 of these payments in the last 10 years. This year's proceeds will go towards the last payment. Congratulations everyone!

A reminder to anyone with goods they wish to donate to the Trash-n-Treasure or other stalls to contact the school on 5427 1285. Small items such as crockery, kitchenware, toys and bric-a-brac are welcome.

Craft items are among the goods being sought. Anyone who can help is asked to ring Anna on 5427 3658 or Cath on 5427 3422. Electric hotplates are also needed for poffertjies (Dutch pancakes), and plaster moulds for the children's painting stall. Potting mix, plants, cuttings and pots are being gratefully accepted by the Plant Stall coordinator, Andrea. Contact 5427 1284 if you can help. Volunteers are available to do any digging and labour if necessary.

Budding singers and musicians are invited to audition on March 15 for the Woodend Idol. The competition is open to children aged 5–18. Auditions start at 10am at St Ambrose Hall. \$5 entrance fee. Registration forms and information available from Annie on 5427 1997.

For more details about the Carnival contact the Committee President, Anne-Louise Lindner on 5427 3056.

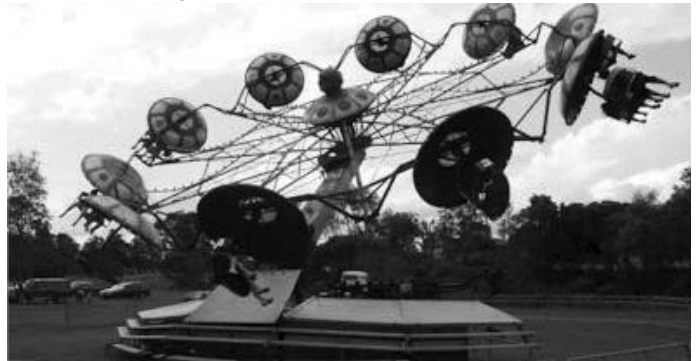
The committee would like to thank all our sponsors:


RAFFLE SPONSORS

- Dennis Barker • Mary Lanarch-Jones
- Macedon Ranges Travel • Warners Jewellers

SPONSORS

- Keatings Real Estate • Kyneton Crane Hire • MR Projects
- CES Consulting – Workcover Consultants • Ivor & Pauline Johnson
- Jason Johnson • Macedon Ranges Waste • Woodend CFA • SES
- Donegans Transport • Sign Obsession
- Galactic Circus @ Crown





WOODEND & DISTRICT PODIATRY

John F. Shapland

Resident Practitioner

Reg. Department Veteran's Affairs

5427 2064

Business and After Hours

1895 Mt. Macedon Rd., Woodend



The MORTGAGE GALLERY

Access to over 30 Lenders!

Home Loans

Car Loans

Personal Loans

Equipment Finance

Matthew Roulston

0403 955 907

Ph: (03) 5422 1633 Fax: (03) 5422 1644
mattroulston@themortgagegallery.com.au



Matthew is a professionally trained Finance Manager with over 10 years in the Finance Industry.

In this time Matthew has assisted hundreds of clients find the right financial solution for their needs.

With access to over 30 lenders including all the major banks, he is sure to find the right loan for you.

The Real Advantage



COMPUTER SERVICE

Sales - Service - Training & Help

THE BANK - OFFICE 3 - 75 HIGH ST WOODEND

JASON JOHNSON - 0400528129

pcs@live.com.au

"Single Parentness" in Macedon Ranges

As a single parent, it is hard sometimes to have your own personal life while looking after your kids. Especially in a small country town like Woodend. However, it is essential that you make the effort to take care of yourself and develop a life outside of your children. Don't think of this as "selfish," think of it as part of being a good parent and a whole person.

Life can be a big challenge – but take small steps every day and you'll make great progress. Join our group which is now forming, where you can talk about the good and the bad and socialize over a BBQ or a coffee and hear from others who know what you are going through. Call Davis Powell if you'd like to get involved in the formation of the Macedon Ranges Single Parents Association 5427 4432.

Heritage Society News

MURDER IN THE BLACK FOREST

by Marion Button

This is the final episode of this account of a grim event which took place in the early days of European settlement in our district.

“Judge Barry, in passing sentence, said the prisoner had been tried by a jury of his countrymen upon evidence which no twelve men could have doubted. He added that the duty of the jury had been to determine whether there were any circumstances in the case which would give it the complexion of homicide under mitigating circumstances, whether it was done in the heat of uncontrollable passion, or whether it was done in self-defence in a justifiable manner. The jury had negatived any such supposition, and had brought in a verdict of guilty of murder. If it were the case, as the prisoner now said it was, that he had committed the crime because he was drunk — the prisoner here remarked that the whole of the party had been drunk for three days previously to the occurrence — supposing such to be the case, the prisoner was only another of those who in a “paroxysm of phrensy”, had sent a fellow creature unsummoned and perhaps unprepared, into the presence of his Creator.

Two witnesses, however, had contradicted this statement, and declared that the prisoner was perfectly sober at the time. Judge Barry believed that it was impossible the prisoner could have been entirely free from the “excitement of intoxicating liquors”. The brief period of his history which had been disclosed to the jury, showed that “even when fare from any false excitement”, his temper was one of an ungovernable nature.

Judge Barry then passed upon John Riches the sentence of death, saying it would be his duty however to forward the recommendation for mercy to the Executive Council and would find no portion of his duty more gracious than that of exercising the prerogative of mercy.

The sentence of the Court was “that the prisoner be taken from the place where he now was to the place from where he came and then to such place as His Excellency the Lieutenant-Governor might appoint, there to be hanged by the neck till he be dead”. John Riches appeared quite unconcerned and was removed from the dock.

Recommendation to Mercy Denied:

In the “Argus” newspaper of 28th October 1852 a statement appeared saying that the recommendation to mercy by the jury was unheeded by the Executive Council and that the execution of John Riches for the murder of Henry Webb would take place at eight o’clock on Wednesday morning next. Mr Wintle, the Governor of the Gaol, had announced to the unfortunate man his fate which he received in an apparently unconcerned manner.

Over the next few days, John Riches was visited daily by the Bishop of Melbourne, Archdeacon Dayies and the Rev. Mr Drummond, whose endeavours for his spiritual welfare were unremitting. He remained in his former callous state.

Plea for Commutation:

On the morning of 2nd November, a memorial was forwarded to His Excellency the Lieutenant Governor, praying for a commutation of the prisoner’s sentence, on the plea that he was intoxicated at the time he committed the atrocious deed and that the ends of justice would not be served by the horrible exhibition of a public execution.

Since his condemnation, Riches manifested little concern for the fearful position in which he was placed, and even in one instance displayed rudeness to the Rev. Mr Drummond, the Church of England Chaplain to the Gaol, who had hoped to awaken him to some feelings of his approaching end. In his last hours however, John Riches underwent some improvement and became, to a certain extent, penitent for his crimes.

The Execution: At 8 o’clock on the morning of 3rd November 1852 John Riches paid the final penalty of the law in the north-western yard of the gaol. He was the fifteenth man to be hung at the Gaol, the first was ten years earlier.

News from Woodend RSL Women’s Auxiliary

Apologies for not being on time to have my usual contribution in the ‘Star’ last month. I belatedly send you all good wishes for the New Year, health and happiness. Our kitchen is once again functioning after the Christmas break and attendances on Friday nights have been very good. Our meals are very reasonably priced and enjoyed by all.

On Good Friday, our chef will be supplying a “Fisherman’s Basket”. A variety of other choices will be available if requested, and there will be an ‘in house Easter raffle’ baskets of Easter eggs.

Last meeting we welcomed two new members, Helen and Colleen; and Ruth who rejoined after a short absence from the district. Two of our members, Margaret and Barbara have been on the sick list and will be returning soon. We wish them a speedy recovery. Our Auxiliary still needs more ladies willing to volunteer their time to assist us, and would be made most welcome.

Our next meeting to be held on Saturday 1st March will be our A.G.M. So come along at 1 pm and vote in your new committee. Only financial members are eligible to vote. Annual fee is \$3.

Our Auxiliary have worked very hard last year and many improvements were made to the kitchen. Thanks to Eric and Reg for maintenance and painting, during the Christmas break. We have installed new equipment, a fridge and a freezer.

We have lots of plans for fundraising in the coming months, but our next big event will be Anzac Day when all hands will be on deck as usual.

Submitted by Betty J. Barned, 2nd Vice President, Womens Auxiliary

Kerri Hendriks Mobile Massage

Since 2004, I have operated a successful mobile massage service – bringing the massage to you – a service that shows a caring and positive attitude to the needs of each individual client.

As a graduate of the **Australian College of Massage and Natural Therapies**, I currently hold a **Level 4 Certificate in Remedial Massage**, which incorporates **Relaxation** and **Deep Tissue Massage**.

My clients have the opportunity to experience a soothing **Almond Oil** massage, incorporating a **250-year-old natural multi-mineral salt massage stone, lavender-scented face towels** and complimentary **brazil nut body butter** applied to hands and feet on completion of the massage.

Half hour /relaxation – \$30

Half hour /deep tissue – \$40

One hour /relaxation – \$55

One hour /deep tissue – \$65

1½ hours /relaxation – \$80

For an appointment, call Kerri
0403 685 060

Macedon Ranges Accommodation Assoc

The Macedon Ranges Accommodation Association (MRAA) is a group of accommodation operators that are working towards promoting the Macedon Ranges as an accommodation destination of choice. Our vision is to be the acknowledged voice of the accommodation industry and to represent an increased majority of accommodation operators in the Macedon Ranges.

The purpose of the association is to offer members a supportive network with access to common marketing, promotion, education resources and initiatives. Association members have Macedon Ranges Shires Council and Tourism Victoria support for all accommodation requirements in the Macedon Ranges. Joining the association offers members inclusion on the website www.macedonranges.org.au which has very effective search engine ranking such as front page on Google for most relevant searches. We are currently working towards giving the MRAA website a brand new look.

A great member resource is the knowledge that other members range from small bed and breakfasts to large hotel operators and have a variety of skills from IT and Accounting

to Hotel Management experience. Being an MRAA member gives you the opportunity to network and share relevant information with other local accommodation operators.

The association is currently developing an MRAA database that will become a primary source of regional accommodation statistics and information to be made available to members, the Macedon Ranges Shire Council and other interested users.

We are also increasingly representing members in advertising and promotional capacities in many of regional festival events within the Macedon Ranges such as the Harvest Picnic, Woodend Winter Arts Festival, Owing Our Lot and the Malmsbury Fare.

The MRAA welcomes new members and any enquiries should be directed to the Secretary, Chris Nicholson on 0419 002 694 or e-mail cnicholson@lawsonlodge.com.au

For all your accommodation needs in the Macedon Ranges, be it for visiting family members or friends wanting a weekend retreat in this beautiful region, go to www.macedonranges.org.au. With a huge range you are sure to find one that suits your requirements.

MACEDON RANGES SELF STORAGE

- * 7 day access
- * Individual units
- * Affordable prices
- * Insurance available
- * Now Fully Alarmed

Store your:

- * Cars
- * Boats
- * Business documents
- * Furniture etc.

Lot 3, Hoyle Court, Kyneton 5422 1898
(Off Beauchamp St) 5422 3488

Your Memories to DVD

- * 8 mm/16 mm Films
- * Compact VHS
- * Mini DV
- * VHS

Discount for Quantity



Top Hat Productions
Ph: 5422 3930



Accountants, Advisors & Planners

Office Locations:
111 High Street, Woodend Ph: 03 5427 8000
2/19 Bourke Street, Kilmore Ph: 03 5782 1273
email: admin@riverwoodgroup.com.au
website: www.riverwoodgroup.com.au

Riverwood Group can offer a *Total Financial Solutions* package for you and your family. Take a look at some of the services we provide:

Taxation

All your taxation requirements to suit individuals and small businesses.

Investments to Create & Protect your Wealth

Managed Funds, Indexed Funds, margin Lending and more

Planning for Retirement

Allocated Pensions, Centrelink Benefits and Payments

Stockbroking

Recommended lists, broking facility available, share updates

Superannuation & Rollovers

Advice, placements, Self-Managed Super Funds and Eligible Termination Payment Advice

Other Services

Home & Investment Loans, Business Loans and Leasing, Income Protection, Life Insurance, Professional Indemnity, Estate Planning and more.

Are you confident you are getting
the best deal
from your bank?

Westpac Woodend have specialist Bankers available by appointment for the following services

- Transaction Accounts • Business Accounts
- Savings Accounts • Merchant Facilities
- Home Loans / Investment Loans • Credit Cards
- Financial Planning / Superannuation
- Personal Loans • Insurance Needs

We may be able to save you time & money!

Feel free to call us
for an obligation free appointment on

5427 3426

or visit our branch at 75 High Street Woodend

Westpac

75 High Street, Woodend

5427 3426

Opening Hours

Monday – Thursday

9:30 am – 4:30 pm

Friday 9:30am – 5:00pm

A Batty Evening

Are you interested in bats? Come and find out more about these fascinating creatures and their importance to us all. Dr Lindy Lumsden presents an evening where you can find out more and also go bat-spotting! Lindy has been

Lady of the Evening

Silver Starlight Soul Spiritual Readings



Spiritualist answering questions in congruence with spiritual development whilst remaining applicable in everyday life. Readings may include getting in touch with loved ones. Answers given with the highest regard to World Peace, Love, Harmony.

For personal Soul Spiritual Reading please call
Epigenetics on
1300 737 146

Armstrong Collins & DeLacy SOLICITORS

Established 1867

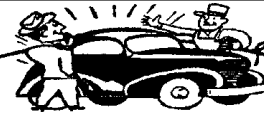
Commercial, Property, Estate and Family Lawyers

Woodend Office:
81 High Street, Woodend
Phone 5427 1472 Fax 5427 3073

Kyneton Office:
143C Mollison Street, Kyneton
Phone 5422 1677 Fax 5422 3357

conducting ecological research on bats for over 25 years. See them close up. Meet George, an Eastern Freetail Bat that has been coming to talks with her for 17 years!

The evening is on Saturday March 15th at the Hanging Rock Reserve. Register at 5pm for 5.15 start. Costs are \$5 per adult, children (under 16) free. The price includes exit from the reserve. BBQ meal and tea/coffee/cake, BYO chair [or rug] and torch. Numbers strictly limited – booking essential. RSVP by March 9th. To make a booking, contact Newham & District Landcare group, PO Box 314, Woodend 3442 or phone Penny Roberts 5427 0795.



FIREBIRD MOTOR REPAIRS CAR WASH

31 URQUHART STREET
WOODEND 3442.

OPEN 7 DAYS
Phone:(03) 5427 2255

WOODEND HEALTH & FITNESS

- Wide range of equipment
- Group fitness classes available
- Teen's Gym sessions available
- Personal training available

Start your fitness campaign today

30 Wood Street, Woodend
Phone Brian on 5427 1181 or 0400 263 230

SOLAR DIRECT

- Solar Hot Water
- Grid Interactive Solar Systems
- Stand Alone Power Systems

Ph: 1300 55 77 98

Mbl: 0411 269 489

Lancefield

CLUBS



Woodend R.S.L. Club

Meals * Bar * Pool Table * Darts
Drinks at cheap prices
Families welcome
Anslow Street, Woodend
Telephone: 5427 3122

PLUMBING SERVICES

Need a plumber?

For reliable, professional, local service

Domestic

Commercial

Industrial

Maintenance

WorX

Call Mal: 0423 204 277 5427 3315

QUIT SMOKING

QUIT CIGARETTES

In Sixty Minutes
GUARANTEED!
Lose Weight For Life

Call Now

1300 737 146

Trade Page Ads are \$25 per month inc GST. Pay for 11 months in advance and receive 10% discount.

TRADE & SERVICE DIRECTORY

ANIMAL CARE

**MACEDON RANGES
PET CARE**
15 years animal nursing.
Dog walking, feed household pets &
farm animals while on holidays.
Ph: Judy on 5427 1352

AGRICULTURAL CONTRACTOR

**PHILIP BEATTIE PTY LTD
AGRICULTURAL CONTRACTOR**
Hay & Silage Round Bales
Mowing Small Bales
Raking Large Bales
Spreading Ploughing Sowing
45 Millers Lane Ph (03) 5427 0702
Newham 3442 Fax (03) 5427 0702
beattie@netcon.net.au Mob 0419 573 226

RSL CANTEN BISTRO

WOODEND RSL WOMEN'S AUXILIARY
Great meals, Great bar, Great prices
Every Friday night at 6pm
Members and Non-Members welcome
Bring your family, bring your friends!
Bookings   Anslow St
5427 3112 Woodend

PSYCHOLOGIST

Sam Luxemburg
Registered Psychologist

- Personal Counselling in Woodend & Romsey (Medicare rebate available)
 - Counselling Training
 - Myers-Briggs personality testing
- Phone: 0428 270 401**
www.luxcollege.com.au

COUNSELLING

 **Keryn Allan** COUNSELLOR
Dip. Prof. Couns.,
M. A. C. A.
Grief & Loss
Trauma
Stress, anxiety &
depression
Anger management
Workplace issues
Behavioural problems
Phone: 0417 011 300
Email: kezallan@ozemail.com.au

STONELAYING & PAVING

 **Stonemason & Paver**
specialising in
• Retaining Walls
• Drystone Walls
• Stone Houses
• Paving
• Over 20 years' experience
Cameron Dunn
Ph (03) 5427 4778 Mob 0429 162 589

TREE SERVICES

 **A&P Tree Services**
• tree pruning / removal • stump removal
• tree planting / transplanting • rope & harness climbing
• confined space removal • fully insured
Professional commercial & residential tree maintenance
all work carried out by qualified arborist
Call Anthony **0417 059 969**

HOME MAINTENANCE

Home & garden maintenance &
landscaping service including
decking, pergolas, carpentry &
painting.
Stuart 0409 150 629
AH 5427 2465

DRESSMAKER

Beryl's Tailoring
DRESSMAKING, ALTERATIONS,
BRIDAL, EVENING & DAY WEAR,
LADIES AND MEN'S REPAIRS
Beryl Bachelor
QUALIFIED DRESSMAKER, NEWHAM
BY APPOINTMENT ONLY
MON TO FRI 9 - 5
5427 0568 0418 510 179

RUBBISH REMOVAL

**CALDER
ENVIRONMENTAL SERVICES**
Your local supplier of rubbish removal skips
from 2 to 15 cubic metres.
We deliver • You fill • We remove
WE BUY OLD CARS & SCRAP METAL
Scrap bins supplied
Conditions apply
Prompt reliable service
0428 509 525

GATES, FENCING, PAVING

**GATES, FENCING
& PAVING**
• Automated Gates
• Colorbond Sheet Fencing • Pool Fencing
• Timber & Steel Picket
• Gates Made to Order
FREE MEASURE & QUOTE
PHONE LAURIE 0419 005 185
5427 1192

EXCAVATOR & BOBCAT

Cheap 'n' Neat
• Bobcat Excavations
• Bobcat & Tipper Hire
• stump grinder
• & wood splitter
0418 556 634, contact Les

ELECTRICAL SERVICES

RML Electrical REC 15642
Installation - Maintenance - Drafting

Robert (Rolly) Leslie
Mobile 0438 347 896
Tele/Fax (03) 5427 0197
9 Ingletons Road
Cherokee, 3434

EARTHMOVING

**BLACK FOREST
EARTHWORKS**
Bobcat & Tipper Hire
Driveways, crush rock deliveries
Rubbish removal
Contact: Dave 0412 840 051

METAL GATES

BVM Metalcraft
SPECIALIZING IN OLD WORLD AND
MODERN STYLE GATES
STEEL BALUSTRATING INCLUDING STAINLESS STEEL
ROPE AND WROUGHT IRON, PUNCHED RAIL FENCING
ALL MATERIALS USED ARE
GALVANIZED OR ZINC PLATED
FINISHED IN YOUR CHOICE OF POWDERCOAT
OUR DESIGN OR YOURS
METAL POLISHING - ALLOYS, BRASS, STAINLESS STEEL
CONTACT BEN 0422 288 768
FOR A FREE QUOTE

Trade Page Ads are \$25 per month inc GST. Pay for 11 months in advance and receive 10% discount.



News from Newham

When writing about our Australia Day awards last month I forgot to mention Brigitte Kny. We presented Brigitte with her award for long service to our CFA and for her care of our injured wildlife and we thank her for this.

On the subject of the CFA the Hall Committee have been very thrilled to receive a \$1000 donation from the Newham CFA towards our Hall works. This has given our fundraising a terrific boost to take us up to just over the \$6,000 mark since October last year. Not bad for small community of 251 households! We still have a long way to go to \$30,000 and to this end we will be asking our community for donations at the end of February. Letters will go out to everyone, but if you don't receive one please ring Val Sutton on 5427 0387. Tax deductible receipts will be given. We hope everyone can see their way to give generously. The residents of Newham said they wanted to keep the Hall and to keep it in our community's hands so please support the Committee to do the work which needs to be done desperately!

The Works sub-committee has completed a business plan for the Hall, thanks to Roger Rugless and Steve Mahon, and we are about to embark down the path of appointing an architect and going down the Grant Application road which can be long and tortuous. We have had great support from Council, Small Town Development and Dept of Planning and Community Development and we continue to talk with Council about the toilets. Replacement of these old toilets is on the Council Capital Works list at present. Architect's drawings and our business plan will be available for everyone to look at at a later date when we plan to have an Open Day at the Hall.

We have fundraising events planned for coming months.

Giant Garage Sale is on again this year on 29th March at the Hall. There will be an Auction arranged by Marty Evans for a couple of hours in the morning [details later] and we need everyone in the entire district to clean out their sheds and cupboards and donate to us as we want to have a boomer sale this year. If you have things you want to get rid of now we can store it. Please ring Val Sutton 5427 0387, Sally Stabback 5427 0059 or Fran Spain 5427 0661.

"All About Bees" is on Sat 5th April at the Hall. Jim Sansom our local and very experienced Apirarist will be conducting this, ably assisted by Jenny Waugh. Places are limited and bookings only accepted on payment of \$30 pp. If you enjoyed the Fungi Workshop last year you will enjoy this. Lunch provided. Please note: if you have a bee allergy then this really not for you!

There will be other events further along the track including our Spring Plant Sale later in the year.

We hope everyone will come along to these events and support us.

Submitted by Sally Stabback

Welcome to the Woodend Star Kids Club March Birthdays

2nd	Joshua Peake.....	Turns 10
5th	Jake Lever.....	Turns 12
6th	Fraser Brian Jackson	Turns 13
7th	Lucy Marsh.....	Turns 12
17th	James B.D. Cachia.....	Turns 11
18th	Emily Jane Ridington.....	Turns 6
19th	Georgia Beddoes	Turns 12
21st	Charlotte McKinnon.....	Turns 10
21st	Ashleigh Izard.....	Turns 12
23rd	Oliver Rice.....	Turns 9
25th	Alyssa Muscat	Turns 9
28th	Tyler Drew	Turns 10
31st	Jay Allanson.....	Turns 12

Happy Birthday Everyone!

**You can collect your birthday surprise
by visiting Collier Office & Business
Assist in the Woodend shopping centre
– but you must come in yourself!**

(PS: We need your jokes and pictures! Please drop them in.)

JOIN THE WOODEND STAR KIDS CLUB

Fill in your details below and place in the drop-boxes. Age limit is restricted to 13 years old and under.

Full name: _____

Address: _____

Date of Birth: _____ Age: _____

Phone: _____

Parent/Guardian Signature: _____

St Mary's Festiva thank you

Thankyou to all the generous community and local business sponsors for the St. Mary's Parish annual church Festiva, which was held last November.

The following people were winners in the major raffle prizes: 1st prize – Julie Waight of Blackwood, 2nd prize – Christopher White of Melbourne, 3rd prize – Lois Ogden of Lyonville, 4th prize – Jean Moller of Woodend and 5th prize – Sue Gilles of Woodend.

Paul Groves

Mobile 0414 928 491

Phone 5427 2171

**Computer Sales, Repairs &
Consulting**

Home and Office Networking

Onsite Repairs and Maintenance

New Computer Systems

paul@pcweirdness.com

Macedon Ranges Walk Together

Feel the results within weeks.
 It's easy It's local It's free It's fun
Macedon Ranges Walk Together – the program that caters for individuals to walk and talk at their pace and in their own time with minimal cost and manageable effort.

For enquiries your local Neighbourhood House or The Coordinator- Jeannie - Phone- 5427 1845
 - Email- www.wnci@vic.chariot.net.au

Macedon Ranges Walk Together Project is facilitated by the Neighbourhood Houses, Lancefield, Romsey, Woodend and the Riddells Creek Community Living & Learning Centre in collaboration with The Macedon Ranges Shire Council, Cobaw Community Health, and The Central Victoria Health Alliance PCP. Funding provided by the Department of Planning and Community Development (DPCD)

Woodend Neighbourhood Centre Update

The term may be short, but we are offering many opportunities for learning and sharing of knowledge and skills.

Adults who are interested in playing chess now have the opportunity to do so on Wednesday evenings from 8pm.

Work related classes include an Integration Aide certificate starting on 10 April. This provides students with the skills to work in schools and kindergartens as a teachers aide for individual students.

Certificated Paediatric First Aid is running on the evenings of 4 & 5 March so if you want to be confident dealing with children's first aid emergencies book in now.

Food handler classes are offered regularly – the next session is on 8 March.

For the more creative people there are chances to try glass fusing, jewellery making, scrap booking, embroidery and quilting.

Our AGM will be held at 1pm on Monday 17 March. Everyone is welcome to attend and support the Centre's celebration of the past 12 months. We welcome nominations for all positions on the Committee of Management from people in the local community who have an interest in the services and philosophy of the Centre. Call in to see us for further information.

We have Internet access that can be used during school hours as well as photocopy and laminating facilities. We hire rooms for community group use too.

For further information or bookings call in and see us at 47 Forest St, ring 5427 1845 or visit our website www.wnci.websyte.com.au

Submitted by Sarah Campbell, Coordinator

WOODEND TAXIS

☎ 5427 2641

- Taxi Passengers
- Verbal Message Delivery
- Airport & Melbourne Service
- Also Pickup & Delivery of Letters & Very Small Parcels

Betty Valli
 29 Urquhart Street, Woodend

Meta Massage

REMEDIAL MASSAGE, SHIATSU, REIKI
 Raymond White

Telephone 0411 268 336
 or 5427 4237 for an appointment
 18 years experience • Chronic and acute conditions
 Sports injuries • Rehab work

New uniforms for players

Woodend Tennis Club is spruiking up its image with new uniforms the latest measure in a rejuvenation of facilities and membership drive. Junior members had the first opportunity to purchase club shirts and caps bearing a specially designed logo. The offer has since been open to senior players.

The uniforms have been subsidised through a \$1000 uniform grant allocated by the State Government. Pictured is Joanne Duncan MP with club members in their new uniforms.

A feature of the new white and navy shirt is the lime green logo depicting the Woodend clocktower. The design is an amalgam of ideas submitted as part of a competition run by the club.

The winners of the logo competition were the Homewood family, Alexandra Mackintosh and Jayne Buckle. Club enquiries: Nadine 5427 1571, Trudy 5427 3524 or Kellie 5427 1857.



WOODEND NURSERY & GARDEN SUPPLIES

OPEN 7 DAYS
 "LOCAL KNOWLEDGE FOR LOCAL CONDITIONS"
36 URQUHART ST, WOODEND
Tel: 5427 1866 Mobile: 0428 271 866

Full range of garden & landscape needs
 Rock, Soil, Sands, Sleepers
 Bobcat hire

SELL YOUR CAR TODAY

Prestige ~ Family ~ Sports ~ 4X4

car connect direct

0418 183 360

Cash ~ Bank Chq ~ Finance Paid Out
 Email: ccdirect@bigpond.net.au
LMCT - 10132W